

Thank you for your participation in this important survey!

Please write any comments you may have on this survey below.

NOTES: 1) Page num. sequenced so that prints correctly double-sided. 2) This is version 1 of 9 survey versions varying Q2-Q5 (see supp. statement part b). 3) Final flow lengths & forest acreages (pg. 8) may change based on natural science modeling updates.



OMB Control No. 2090-0028
Approval expires 6/30/2015

Survey:
Your Opinion Needed on an
Arizona River Issue

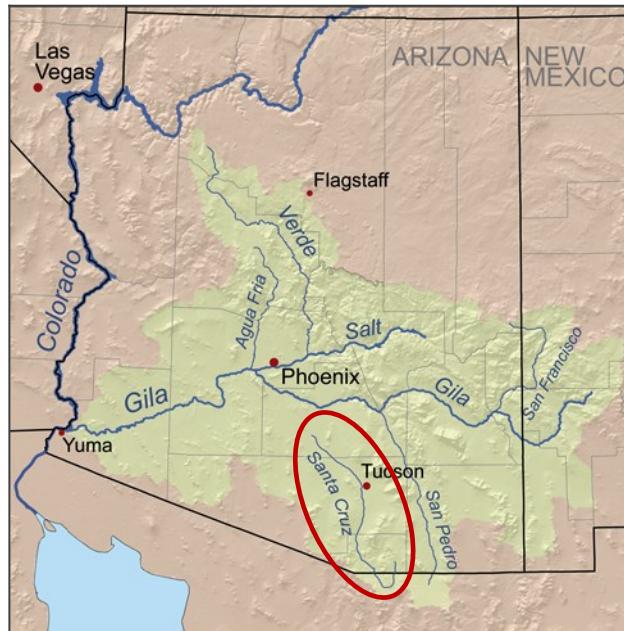


Photos showing the Santa Cruz River where there is flow, and where there is no flow. Open this survey to learn more and to submit your opinion on Santa Cruz River management.

THE SANTA CRUZ RIVER IN SOUTHERN ARIZONA

This survey asks for your opinion on how to manage the Santa Cruz River. It is important for managers to hear from all perspectives, so please take the time to read the background and answer the questions. This survey is designed to help managers select the best option.

The Santa Cruz River is in southern Arizona. It flows north through several communities such as Rio Rico, Tubac, Amado, Green Valley, Sahuarita, Tucson, and Marana. It also flows through Tumacácori National Park near the border with Mexico. The Santa Cruz joins the Gila River south of Phoenix which then joins the Colorado River at Yuma. People have lived in the Santa Cruz valley for thousands of years, and water was found in the Santa Cruz River in some places all-year. Pumping groundwater over the last 80 to 100 years lowered groundwater levels and dried up many of the wet areas along the river.



We need the following questions to ensure votes from all groups have been fairly represented in this survey.

Question 15: What year were you born? 19__ __

Question 16: Are you male or female? Male Female

Question 17: What is the highest level of education that you have completed?

- Less than high school
- High school or equivalent
- High school + technical school
- One or more years of college
- Bachelor's Degree
- Graduate Degree

Question 18: How many people live in your household? _____

Question 19: How many of those people are 18 or older? _____

Question 20: Are you and/or your spouse currently employed? Yes No

Question 21: How many years have you lived in Arizona? _____

Question 22: Does anyone in your household belong to an environmental organization (such as Sierra Club, or National Audubon Society)?

- Yes
- No

Question 23: From the following options, do you consider yourself to be:

- American Indian
- Asian
- African American
- Latino/Hispanic
- White
- Other _____

Question 24: What category comes closest to your total household income for 2012?

- Less than \$10,000
- \$10,000 to \$19,999
- \$20,000 to \$39,999
- \$40,000 to \$59,999
- \$60,000 to \$79,999
- \$80,000 to \$99,999
- \$100,000 to \$149,999
- \$150,000 to \$199,999
- \$200,000 to \$249,999
- \$250,000 or more

TREATED WASTEWATER IN THE SANTA CRUZ RIVER

Question 14: Rate the importance of different recreational activities for your household along the Santa Cruz River or along its riverbanks

| Santa Cruz River Activity | Not Important | Somewhat Important | Very Important | | |
|---|---------------|--------------------|----------------|---|---|
| Walking | 1 | 2 | 3 | 4 | 5 |
| Biking | 1 | 2 | 3 | 4 | 5 |
| Safe Partial Body Contact with Water (wading) | 1 | 2 | 3 | 4 | 5 |
| Safe Full Body Contact with Water (submersion) | 1 | 2 | 3 | 4 | 5 |
| Birdwatching | 1 | 2 | 3 | 4 | 5 |
| Horseback Riding | 1 | 2 | 3 | 4 | 5 |
| Off Road Vehicle Use | 1 | 2 | 3 | 4 | 5 |
| Going to the river to see a large flow or flood | 1 | 2 | 3 | 4 | 5 |
| Boating or Tubing | 1 | 2 | 3 | 4 | 5 |
| Picnicking | 1 | 2 | 3 | 4 | 5 |
| Other _____ | 1 | 2 | 3 | 4 | 5 |

Since the 1950's, treated wastewater has been released into the Santa Cruz River in two places, in the North near Tucson, and in the South near the border with Mexico. At first this was just a method of disposing of the treated wastewater. It was then found that the water is helping to provide wet river ecosystems, and associated plants and animals that are scarce in southern Arizona. The treatment is currently being upgraded to provide water of higher quality and to eliminate odor. Having wastewater of higher quality raises new questions about how to best manage the water.

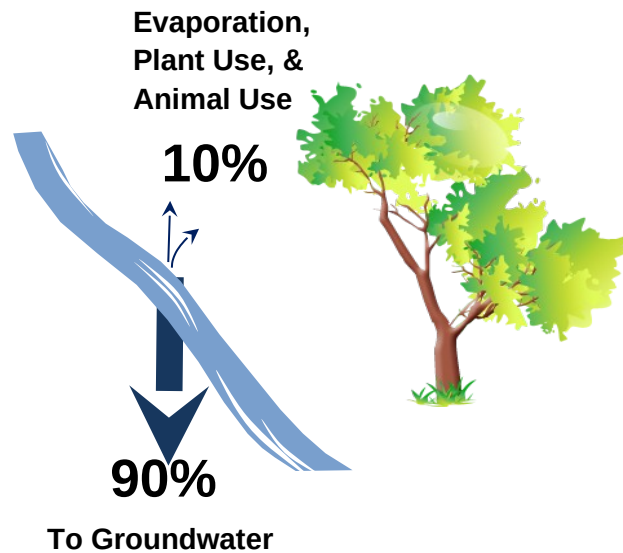


NORTH
Treated wastewater now supports about 20 miles of flow, and about 125 acres of forest along the river. The flow starts in NW Tucson near Prince Rd and I-10 and flows past Marana.

SOUTH
Treated wastewater now supports about 17 miles of flow, and about 460 acres of forest along the river. The flow starts in southern Rio Rico and flows past Tubac.

WHAT HAPPENS TO THE WATER?

- About 10% of the treated wastewater evaporates or is consumed by plants and animals. The remaining 90% is not lost to the watershed, but becomes groundwater.
- Of the 10% consumed, most of it is used by trees. An acre of forest along the river requires about as much water as 44 people per year. An acre is almost the same size as a football field without the endzones.



Question 13:

- In the last 12 months, what is the estimated total number of separate river-related recreational trips members of your household have taken? For example, a trip that combined picknicking and birdwatching activities would count as a single trip.

_____ total trips in the last 12 months.

- How many of those trips were within a 2 hour drive of your home?

_____ trips in the last 12 months.

- How many of those trips were within your city or community?

_____ trips in the last 12 months.

- How many of those trips involved any portion of the Santa Cruz River?

_____ trips in the last 12 months.

- If there were any trips to the Santa Cruz River, what was the main recreational activity? If this doesn't apply, just leave this blank.

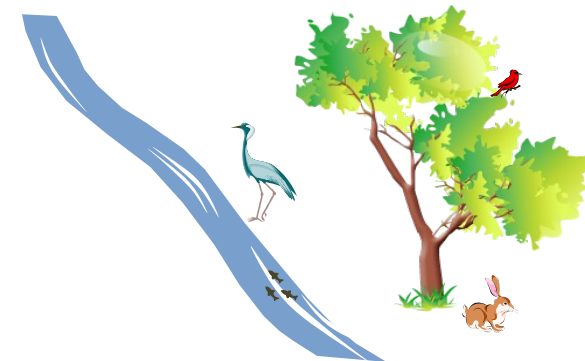
_____ was the main activity.

WHAT DOES THE WATER MEAN FOR THE ENVIRONMENT?

Question 12: In the last 12 months, how often have members of your household engaged in these recreation activities in any river, stream, canal, dry wash, or arroyo, or along its banks?

| River-Related Activity | Number of times in the last 12 months | | | | |
|---|---------------------------------------|------------------------------|-------------------------------|--------------------------------|---------------------------|
| Walking | <input type="radio"/> none | <input type="radio"/> 1 to 2 | <input type="radio"/> 3 to 10 | <input type="radio"/> 11 to 24 | <input type="radio"/> 25+ |
| Biking | <input type="radio"/> none | <input type="radio"/> 1 to 2 | <input type="radio"/> 3 to 10 | <input type="radio"/> 11 to 24 | <input type="radio"/> 25+ |
| Partial Body Contact with Water (wading) | <input type="radio"/> none | <input type="radio"/> 1 to 2 | <input type="radio"/> 3 to 10 | <input type="radio"/> 11 to 24 | <input type="radio"/> 25+ |
| Full Body Contact with Water (submersion) | <input type="radio"/> none | <input type="radio"/> 1 to 2 | <input type="radio"/> 3 to 10 | <input type="radio"/> 11 to 24 | <input type="radio"/> 25+ |
| Birdwatching | <input type="radio"/> none | <input type="radio"/> 1 to 2 | <input type="radio"/> 3 to 10 | <input type="radio"/> 11 to 24 | <input type="radio"/> 25+ |
| Horseback Riding | <input type="radio"/> none | <input type="radio"/> 1 to 2 | <input type="radio"/> 3 to 10 | <input type="radio"/> 11 to 24 | <input type="radio"/> 25+ |
| Off Road Vehicle Use | <input type="radio"/> none | <input type="radio"/> 1 to 2 | <input type="radio"/> 3 to 10 | <input type="radio"/> 11 to 24 | <input type="radio"/> 25+ |
| Going to a river to see a large flow or flood | <input type="radio"/> none | <input type="radio"/> 1 to 2 | <input type="radio"/> 3 to 10 | <input type="radio"/> 11 to 24 | <input type="radio"/> 25+ |
| Boating or Tubing | <input type="radio"/> none | <input type="radio"/> 1 to 2 | <input type="radio"/> 3 to 10 | <input type="radio"/> 11 to 24 | <input type="radio"/> 25+ |
| Picnicking | <input type="radio"/> none | <input type="radio"/> 1 to 2 | <input type="radio"/> 3 to 10 | <input type="radio"/> 11 to 24 | <input type="radio"/> 25+ |
| Other _____ | <input type="radio"/> none | <input type="radio"/> 1 to 2 | <input type="radio"/> 3 to 10 | <input type="radio"/> 11 to 24 | <input type="radio"/> 25+ |

- The constant release of treated wastewater supports a wet river ecosystem that used to be more common in southern Arizona.
- If a river does not have water year-round there is still an ecosystem, just not a wet river ecosystem.
- The wet river ecosystem along the Santa Cruz River includes cottonwood and willow trees, tall shade trees dependent on moist soil. This is one of the rarest forest types in southern Arizona.
- In the desert, wet river ecosystems contain a large concentration of plant and animal species. Along the wet areas of the Santa Cruz River, there is a variety of birds and small mammals, and minnow-sized fish have been found.
- The San Pedro River near Sierra Vista and the Gila River near Safford are examples of other wet river ecosystems in southern Arizona. The ecosystems in those locations rely on natural water flow rather than release of treated wastewater.



YOU WILL BE ASKED TO VOTE ON THE FOLLOWING OPTIONS

Within the next 10 years, Santa Cruz River flows are predicted to be cut back due to increasing demands for water resources in southern Arizona. This survey is designed to help managers know whether people would be willing to pay to maintain a water supply for the wet river ecosystem. Note that all options, including the no-cost option, maintain at least some wastewater in the river and include the recent wastewater treatment upgrades that increase water quality and eliminate odor. This survey is also designed to help managers know whether people would be willing to pay for additional water quality measures that would allow full body contact recreation in the treated wastewater.

- **EXPECTED FUTURE:** Within the next 10 years, the extent of river flow and the wet river ecosystem would be reduced from current condition to 10 flow miles and 45 forest acres in the North, and 9 miles and 230 forest acres in the South. There would still be trees, plants, birds, mammals, and minnow-sized fish in the North and South. This option does not require new taxpayer costs.
- **FLOW & FOREST:** People can vote to maintain more miles of river flow and cottonwood and willow forest acres in the North and the South. This is in contrast to the Expected Future which cuts back flows and forest acreage. As stated on pg.3, the current condition is 20 flow miles and 125 forest acres in the North, and 17 flow miles and 460 forest acres in the South. Choosing Flow & Forest more than the Expected Future would mean an increase in taxes as compensation for not selling the water for off-river purposes.
 - Note that in the South, treated wastewater results in 4 to 5 times more forest per mile of flow. This is because adding treated wastewater in the South allows tree roots to reach the groundwater which is relatively close to the surface there. Trees in the South also tend to grow larger overall.
 - Refer to the photos on the next page to compare typical scenes of the North and South. Photos are also shown downstream of where water flows currently end.

Question 9: If you voted for an option with more Flow & Forest than “Expected Future”, in Q2 to Q5, why?

CHOOSE ONE ANSWER THAT FITS BEST

- NEVER CHOSE more Flow & Forest than Expected Future.
- Prefer visible flow in the river
- Prefer more vegetation along the river
- Prefer both more flow and more vegetation along the river
- I was forced to choose Flow & Forest in order to get Full Body Contact
- Other reasons: _____

Question 10: If you voted for an option containing “Full Body Contact” in Q2 to Q5, why?

CHOOSE ONE ANSWER THAT FITS BEST

- NEVER CHOSE an option that included “Full Body Contact”
- My household is interested in recreational contact with the treated water
- I want other people to be able to recreationally contact the treated water
- I was forced to choose Full Body Contact in order to get more Flow & Forest
- Other reasons: _____

Question 11: Thinking about how you voted in Q2 to Q5, would you choose the same options in an actual public vote?

- Strongly Agree Agree Unsure Disagree Strongly Disagree

Question 6: Before reading this survey were you aware of the location of any part of the Santa Cruz River?

- Yes
- No

Question 7: Before reading this survey were you aware that the Santa Cruz River has water all-year in the two places shown on page 3?

CHOOSE ONE ANSWER THAT FITS BEST

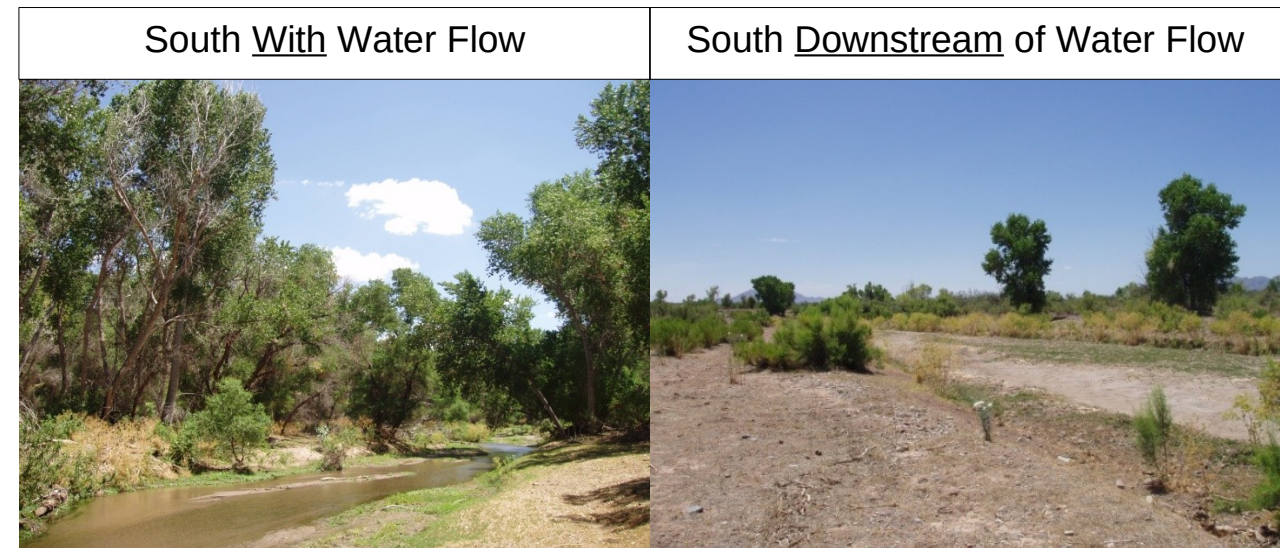
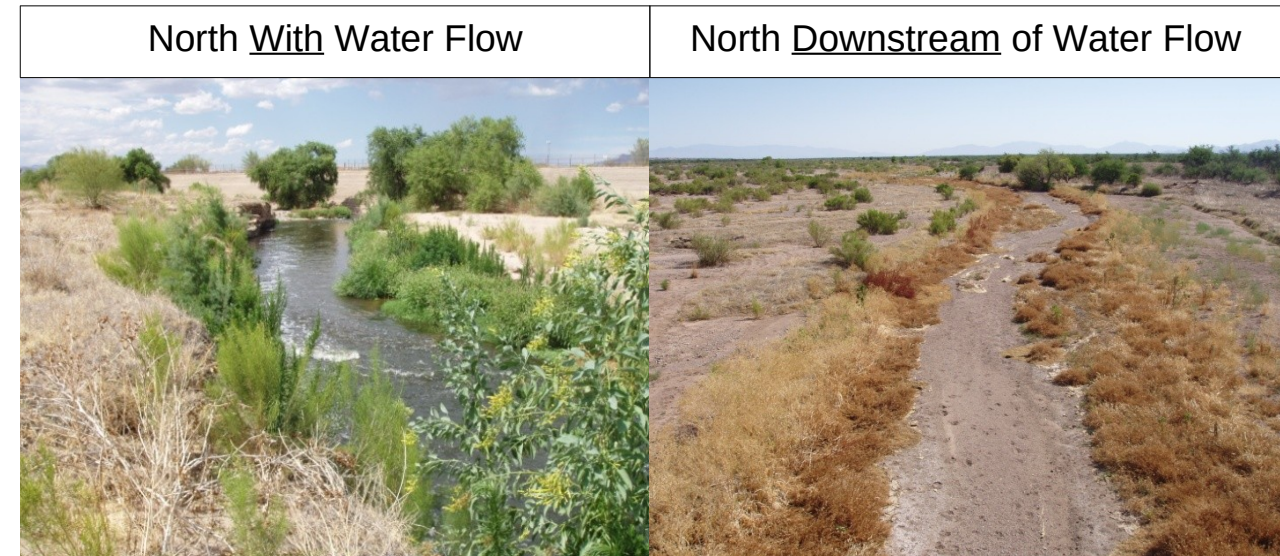
- Aware of the water in the North
- Aware of the water in the South
- Aware of the water in both the North and the South
- Not aware of the water in the North or the South

Question 8: If you ever voted for “Expected Future” in Q2 to Q5, why?

CHOOSE ONE ANSWER THAT FITS BEST

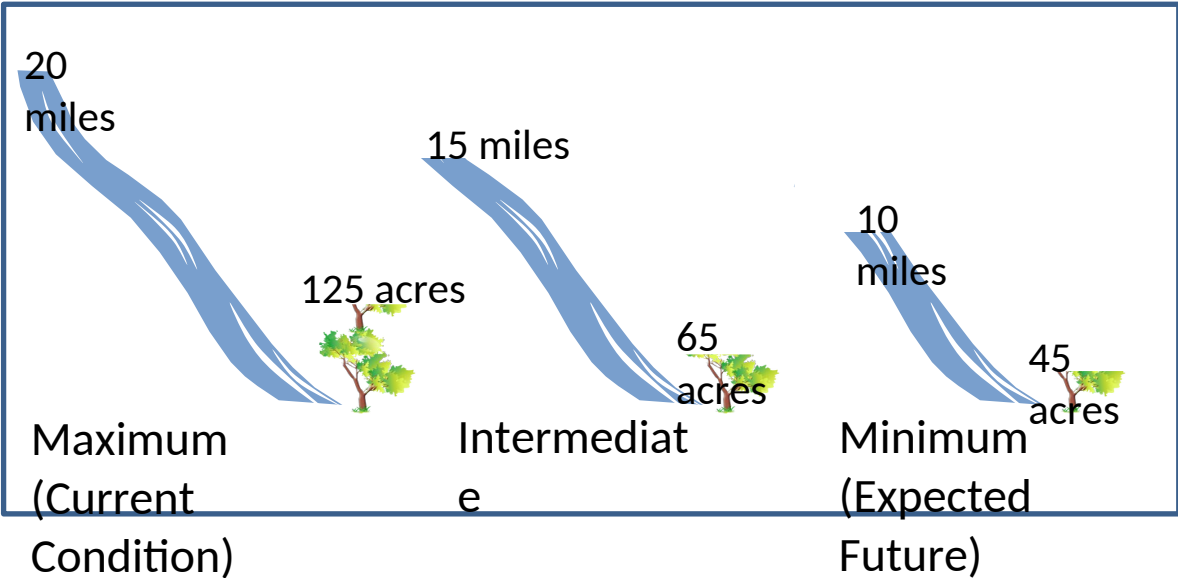
- NEVER CHOSE “Expected Future”
- No ability to pay
- Other options were not worth it to my household
- Prefer to make a donation than to increase taxes
- Don't think the other options are realistic
- Other _____

➤ Photos show the changes that could happen in the North and South if a part of the river no longer receives treated wastewater.

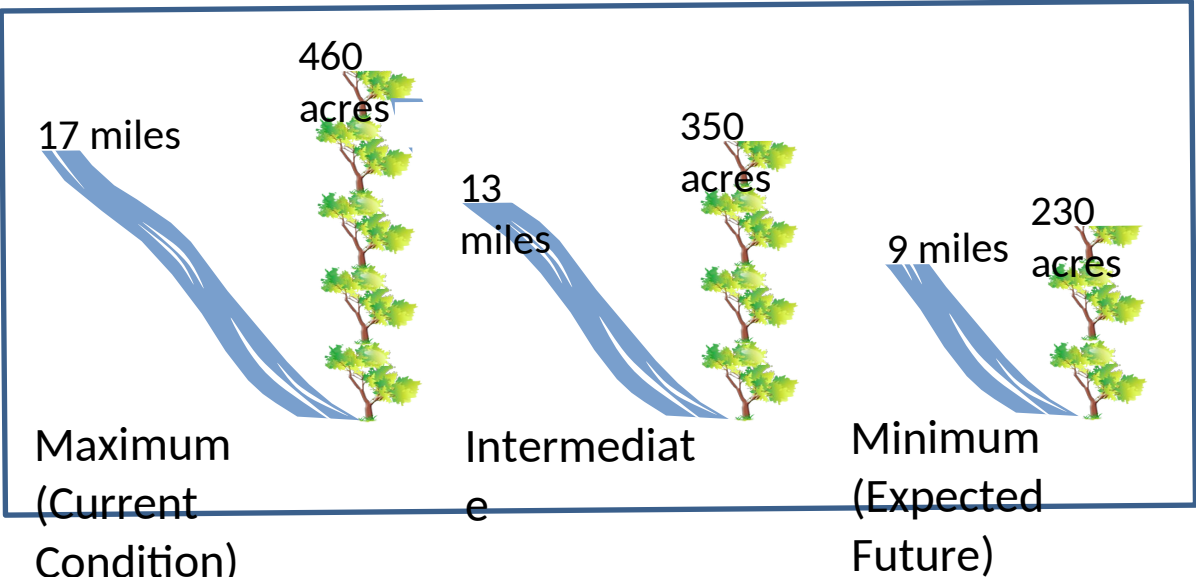


Question 5. Given a choice between **Option A**, **Option B**, or **Expected Future** for the Santa Cruz River, how would you vote?

Summary of North Flow and Forest Possibilities



Summary of South Flow and Forest Possibilities



| Location & Effect | Option A | Option B | Expected Future |
|--|--|--|---|
| North Flow & Forest | 20 flow miles 125 forest acres | 20 flow miles 125 forest acres | 10 flow miles 45 forest acres |
| North Full Body Contact | No | Yes | No |
| South Flow & Forest | 9 flow miles 230 forest acres | 17 flow miles 460 forest acres | 9 flow miles 230 forest acres |
| South Full Body Contact | No | Yes | No |
| \$ Cost to your Household per Year | \$30 Increase in Annual Taxes | \$60 Increase in Annual Taxes | \$0 Increase in Annual Taxes |
| HOW WOULD YOU VOTE? (CHOOSE ONE ONLY) | <input type="checkbox"/> I vote for Option A | <input type="checkbox"/> I vote for Option B | <input type="checkbox"/> I prefer Expected Future |

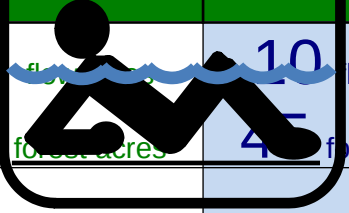
Question 4. Given a choice between **Option A**, **Option B**, or **Expected Future** for the Santa Cruz River, how would you vote?

| | | | |
|--|--|--|---|
| North Flow & Forest | 10 flow miles 45 forest acres | 15 flow miles 65 forest acres | 10 flow miles 45 forest acres |
| North Full Body Contact | No | Yes | No |
| South Flow & Forest | 17 flow miles 460 forest acres | 9 flow miles 230 forest acres | 9 flow miles 230 forest acres |
| South Full Body Contact | Yes | Yes | No |
| \$ | \$40 | \$50 | \$0 |
| HOW WOULD YOU VOTE? (CHOOSE ONE ONLY) | <input type="checkbox"/> I vote for Option A | <input type="checkbox"/> I vote for Option B | <input type="checkbox"/> I prefer Expected Future |

- FULL BODY CONTACT:** During stormflows, the water quality is not considered safe for any type of human contact. However, during low-flow times the water in the North and South is currently considered safe for wading. Water quality could be improved to be considered safe for full body contact such as submersion during low-flow times. This would require further measures to control bacteria, which would mean an increase in taxes to pay for these measures.

This concludes the description of the options. Different options for “Flow and Forest” and “Full Body Contact” are possible for the North and South. You will have an opportunity to vote on different options, including “Expected Future”.

| Location & Effect | Option A | Option B | Expected Future |
|--|-----------------------------------|----------------------------------|----------------------------------|
| North Flow & Forest | 15 flow miles 65 forest acres | 10 flow miles 45 forest acres | 10 flow miles 45 forest acres |
| North Full Body Contact | Yes | No | No |
| South Flow & Forest | 13 flow miles 350 forest acres | 9 flow miles 230 forest acres | 9 flow miles 230 forest acres |
| South Full Body Contact | Yes | Yes | No |
| \$ Cost to your Household per Year | \$40 Increase in Annual Taxes | \$20 Increase in Annual Taxes | \$0 Increase in Annual Taxes |
| (CHOOSE ONE ONLY) | Option A | Option B | Expected Future |



| Location & Effect | Option A | Option B | Expected Future |
|-----------------------------------|-----------------------------------|----------------------------------|----------------------------------|
| North Flow & Forest | 20 flow miles 125 forest acres | 10 flow miles 45 forest acres | 10 flow miles 45 forest acres |
| North Full Body Contact | Yes | No | No |

| | | | |
|--|--|--|---|
| South Flow & Forest | 17 flow miles 460 forest acres | 17 flow miles 460 forest acres | 9 flow miles 230 forest acres |
| South Full Body Contact | Yes | No | No |
| \$ Cost to your Household per Year | \$60 Increase in Annual Taxes | \$40 Increase in Annual Taxes | \$0 Increase in Annual Taxes |
| HOW WOULD YOU VOTE? (CHOOSE ONE) | <input checked="" type="checkbox"/> I vote for Option A | <input checked="" type="checkbox"/> I vote for Option B | <input checked="" type="checkbox"/> I prefer Expected Future |

EXAMPLE VOTE

questions will look like the sample below

Question 2. Given a choice between Option A, Option B, or Expected Future for the Santa Cruz River, how would you vote?

THIS SURVEY IS SIMILAR TO A PUBLIC VOTE

The questions starting on the next page ask you how you would vote for different options for the Santa Cruz River.

Effects of each Option will be described with the following information:

| Location & Effect | Option A | Option B | Expected Future |
|--|---|---|--|
| North Flow & Forest | 20 flow miles <small>Option A, check here</small> | 10 flow miles | 10 flow miles |
| | 125 forest acres | 45 forest acres | 45 forest acres |
| North Full Body Contact | Yes | No | No |
| South Flow & Forest | 17 flow miles | 17 flow miles | 9 flow miles |
| | 460 forest acres | 460 forest acres | 230 forest acres |
| South Full Body Contact | Yes | No | No |
| \$ Cost to your Household per Year | \$60 Increase in Annual Taxes | \$40 Increase in Annual Taxes | \$0 Increase in Annual Taxes |
| HOW WOULD YOU VOTE? (CHOOSE ONE ONLY) | <input type="checkbox"/> I vote for Option A | <input type="checkbox"/> I vote for Option B | <input type="checkbox"/> I prefer Expected Future |

| Location & Effect | Description |
|--|---|
| North Flow & Forest | Approximate <u>Miles</u> of year-round flow; & Approximate <u>Acres</u> of cottonwood/willow forest along the river, tall shade trees dependent on wet soils. |
| North Full Body Contact | <u>Yes</u> it is safe for full body contact at low-flow times, or <u>No</u> , it is only safe for wading at low-flow times. |
| South Flow & Forest | Approximate <u>Miles</u> of year-round flow; & Approximate <u>Acres</u> of cottonwood/willow forest along the river, tall shade trees dependent on wet soils. |
| South Full Body Contact | <u>Yes</u> it is safe for full body contact at low-flow times, or <u>No</u> , it is only safe for wading at low-flow times. |
| \$ Cost to your Household per Year | How much the option will cost your household in unavoidable taxes per year. These taxes would not increase or decrease over time. |

HOW WOULD YOU RATE THE IMPORTANCE OF THESE EFFECTS?

AS YOU VOTE, REMEMBER THESE IMPORTANT DETAILS

Question 1. Rate each of the following in terms of their importance to your household. For each, use “1” for the least important, and “5” for the most important.

| Location & Effect | Not Important | | Somewhat Important | | Very Important | |
|--|---------------|---|--------------------|---|----------------|--|
| North Flow & Forest | 1 | 2 | 3 | 4 | 5 | |
| North Full Body Contact | 1 | 2 | 3 | 4 | 5 | |
| South Flow & Forest | 1 | 2 | 3 | 4 | 5 | |
| South Full Body Contact | 1 | 2 | 3 | 4 | 5 | |
| \$ Cost to your Household per Year | 1 | 2 | 3 | 4 | 5 | |

- ✓ There are 4 voting questions, each on a different page.
- ✓ Each question describes alternative choices to help us better understand your household’s opinion.
- ✓ Review each question carefully. Your votes are important and voting questions are designed to help determine the best option for the Santa Cruz River.
- ✓ Costs to your household will range from \$0 to \$60 per year, depending on the option.
- ✓ The “Expected Future” option shows the expected future at no added cost. Choose this if other options are not worth it to your household.