

12 Years of Trainings:

National Public Health Performance Standards
Mobilizing for Action Through Planning and Partnerships
Agency and Systems Improvement
Public Health Improvement
National Public Health Improvement Initiative

In 12 years of training:

- 148 people have attended at least once as partners and/or faculty
 - AAIP: 3
 - APHA: 8
 - APHL: 4
 - ASTHO: 13
 - CDC: 49
 - NACCHO: 19
 - NALBOH: 7
 - NNPHI: 12
 - PHF: 9
 - PHAB: 4
 - Other: 17

There have been 1261 participants from 49 states and 429 health departments registered:

- 360 NPHPSP only
 - 74 MAPP only
 - 194 both MAPP and NPHPSP
 - 597 Agency and Systems Improvement / Public Health Improvement Training
-
- No information for 36 registrants
 - Partners / faculty are excluded
 - These counts include duplicates

Geographic distribution and repeat attendees

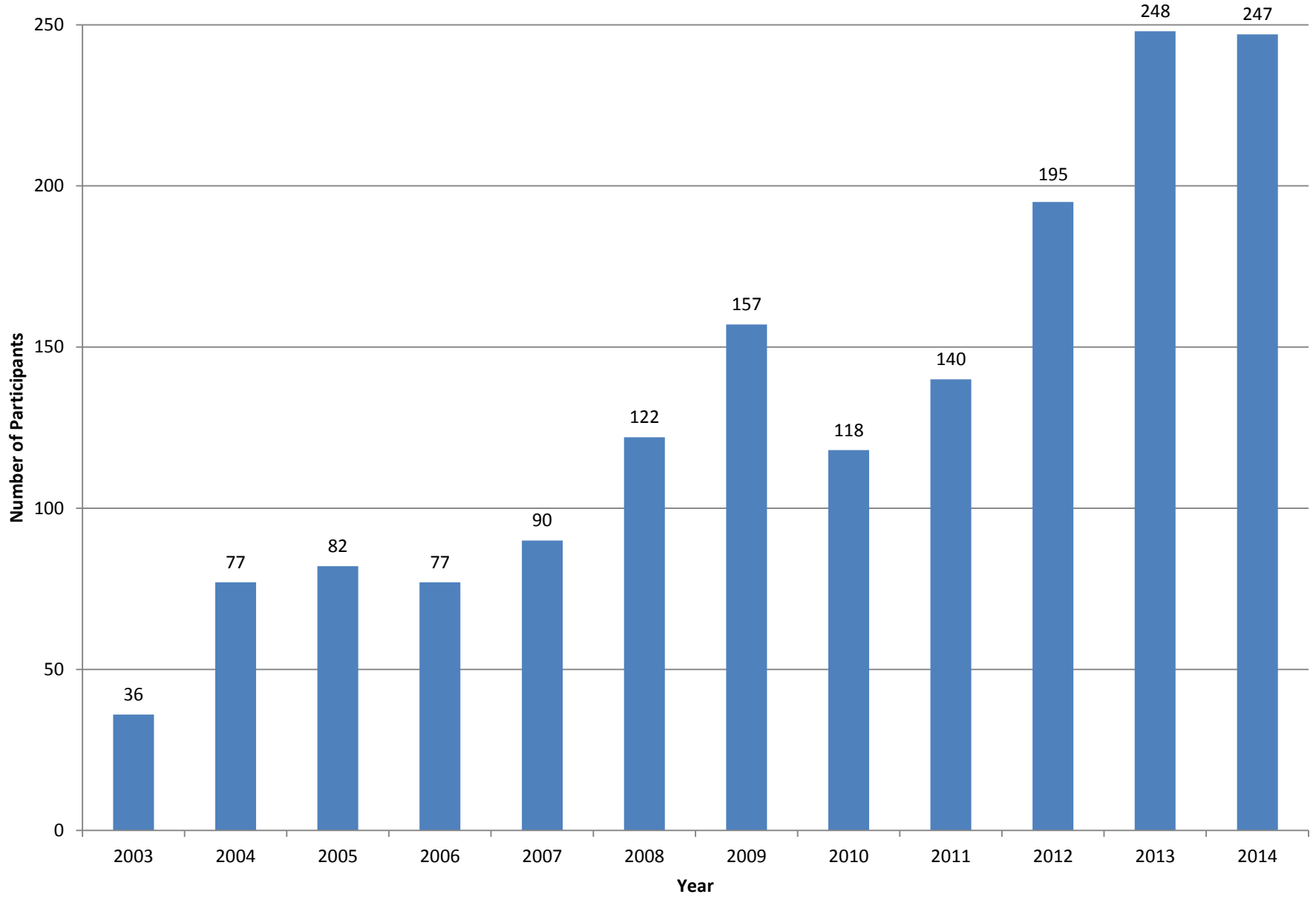
- 859 people have attended once
- 178 people have attended more than once, the majority twice (71%); six people have attended $\geq 5x$
- No one from SD has ever attended
- Trainings have been held in six states

1037 people* from 49 states and 429 health departments have participated in the training:

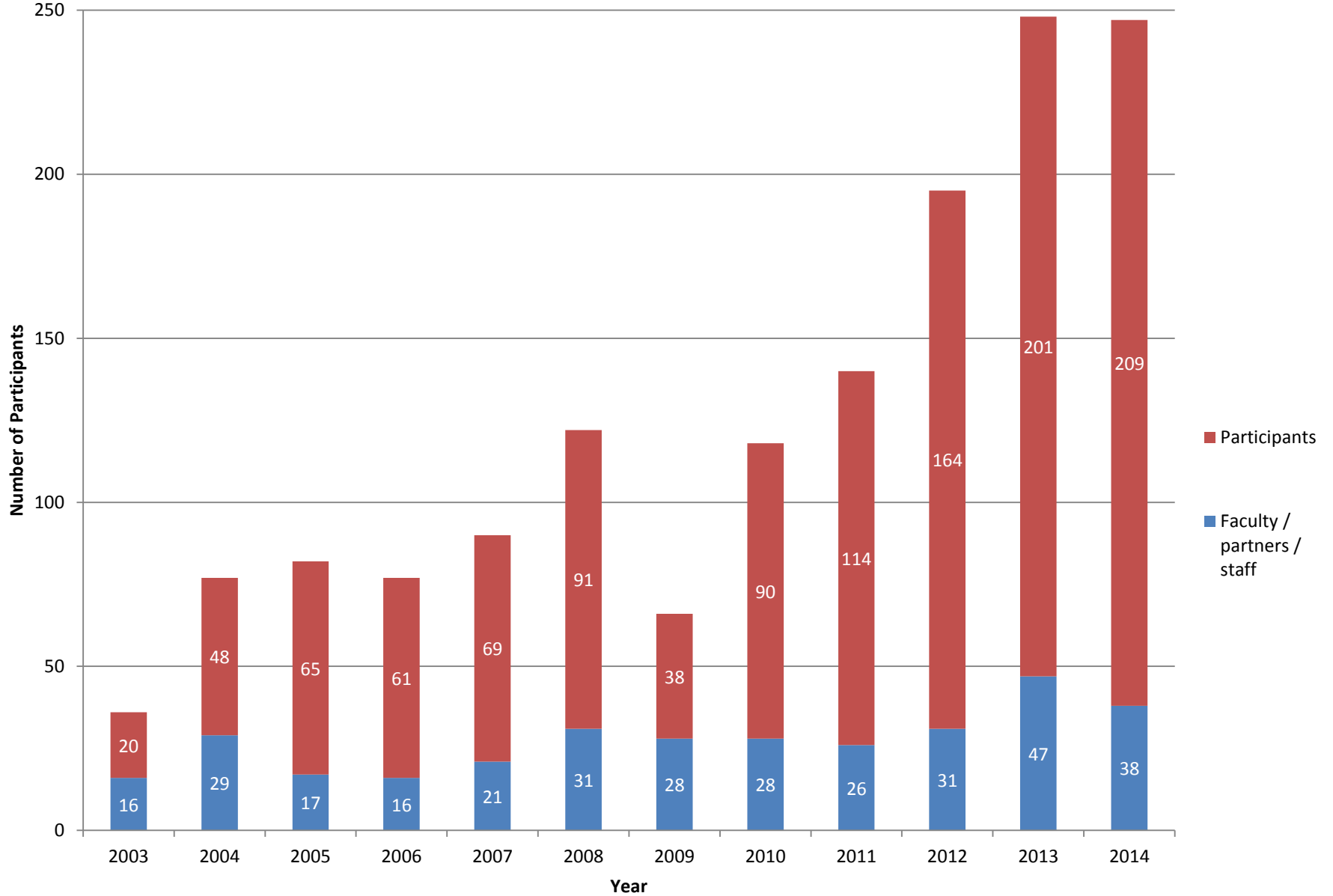
- 610 LHD participants from 37 states and Washington DC
- 335 participants from 48 SHDs
- 17 board members / BOH Association members from 12 states and Washington DC
- 45 participants from 19 institutes in 15 states
- 62 tribal participants from 14 locations
- 47 territorial participants from 7 locations
- 37 participants from the federal government, outside of CDC staff organizing or presenting at the training (includes military, Indian Health Service, other federal agencies, and non-presenting CDC staff)
- 68 participants from “other” locations (includes community-based organizations, hospitals, private industry, consultants, etc.)

* Duplicates removed from this count

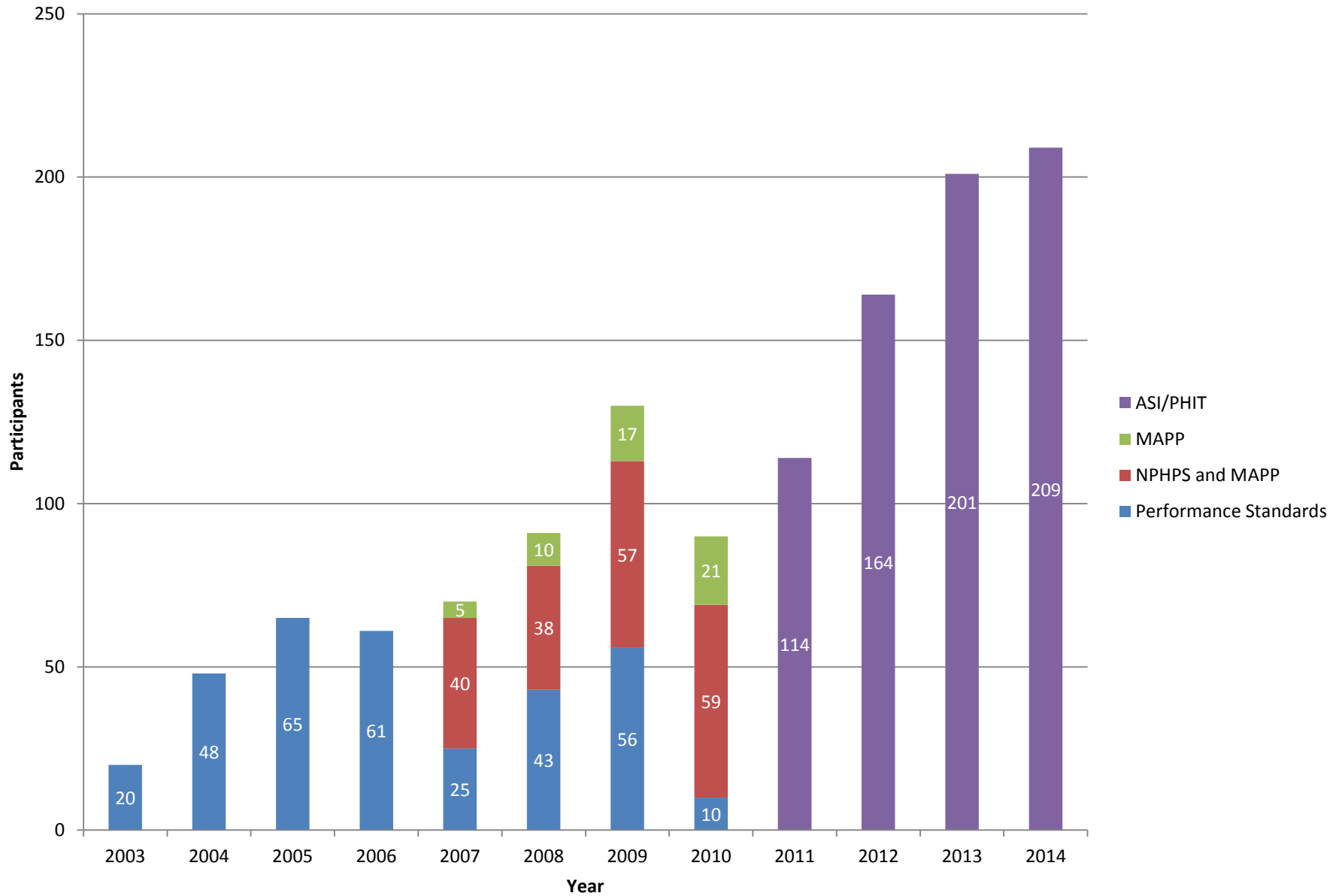
Total Number of Attendees, 2003-2014



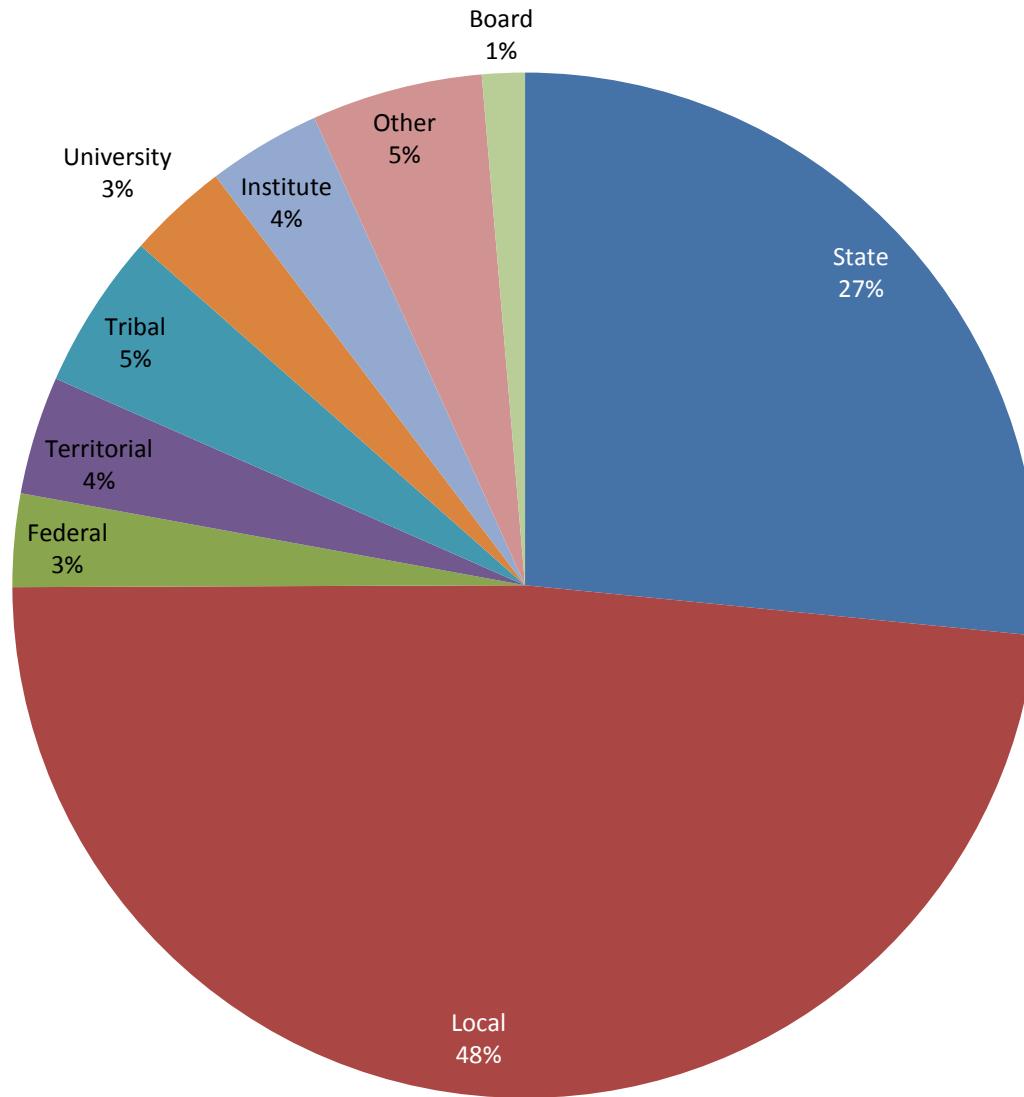
Number of Participants and Partner Attendees (Faculty) each year, 2003-2014



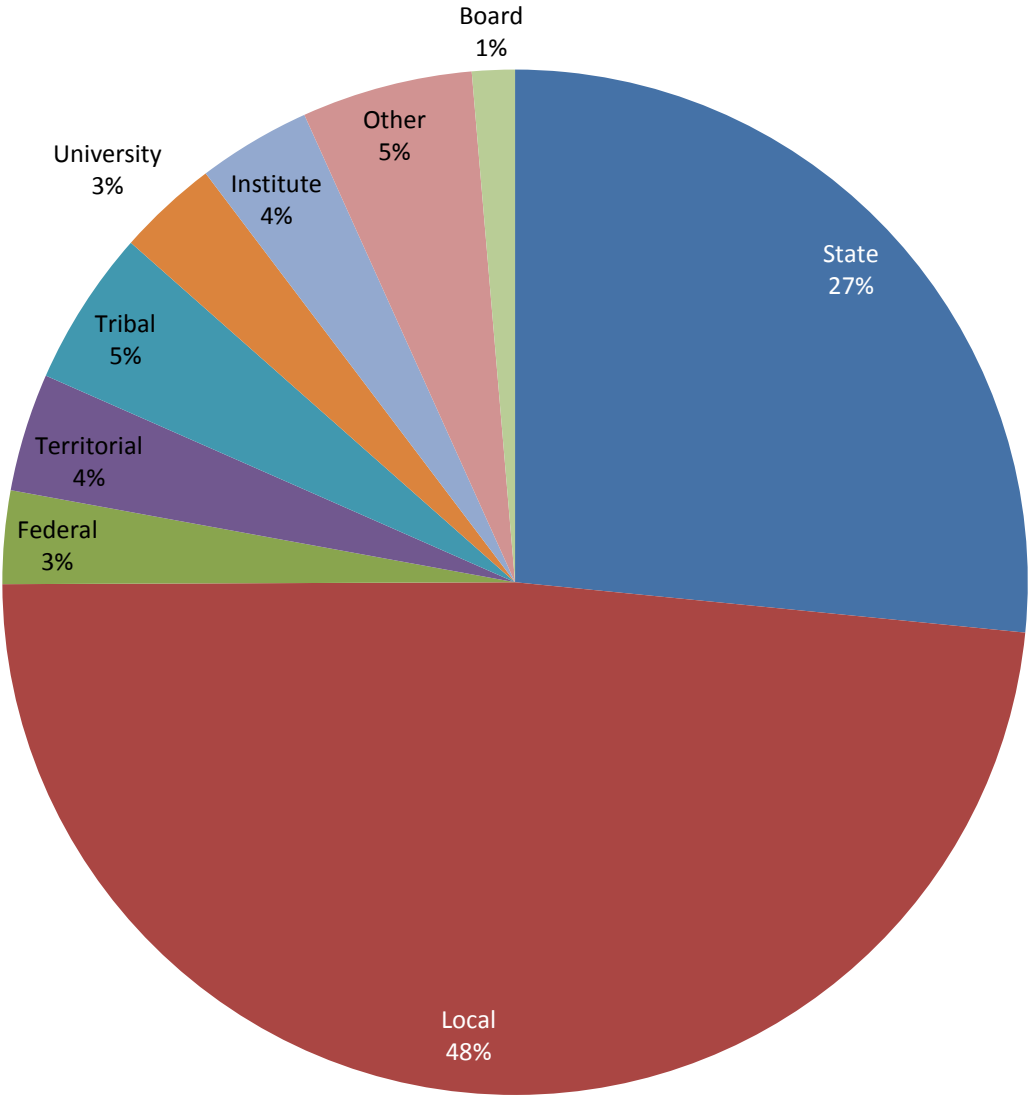
Number of participants in each type of training



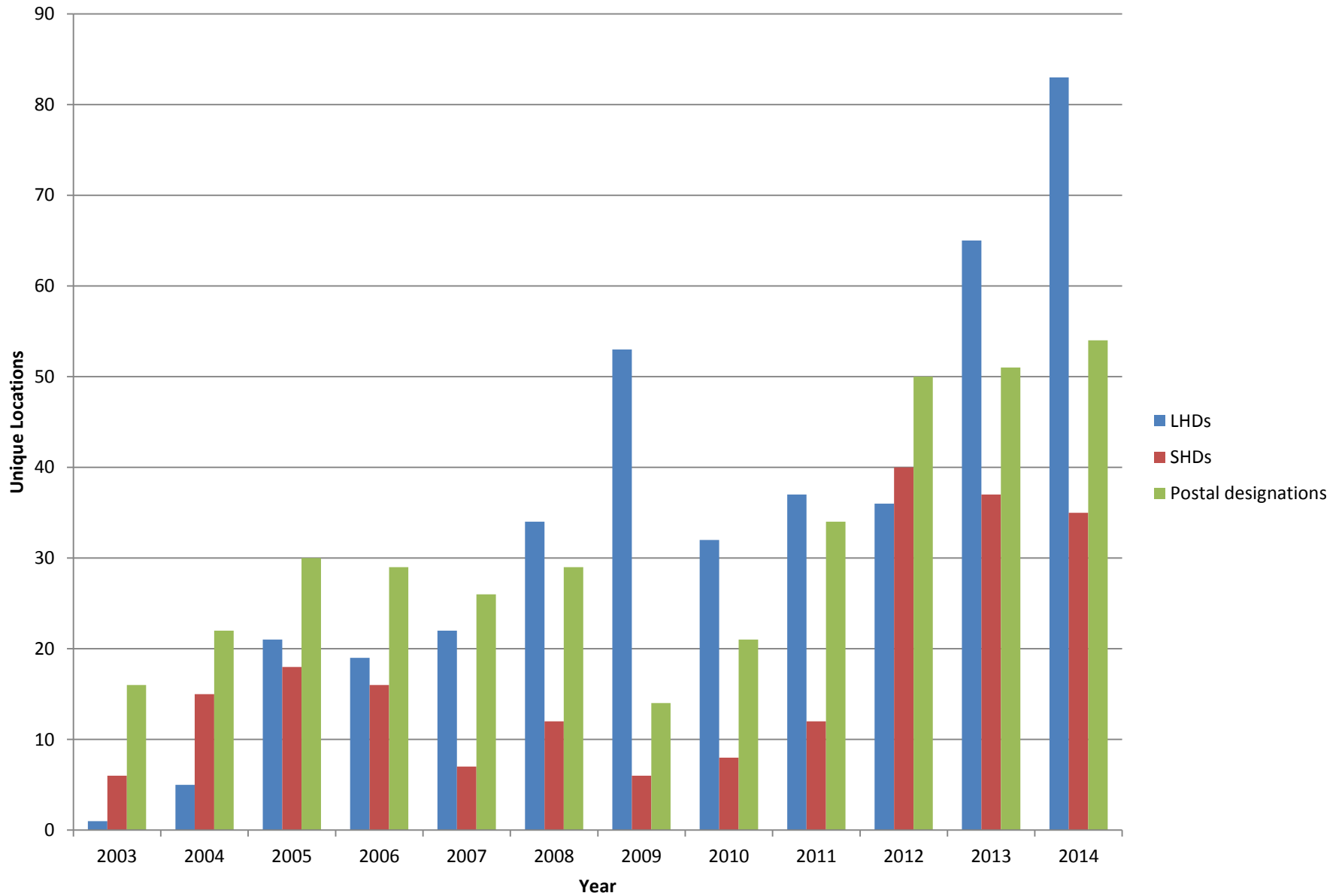
All years participation: types of institutions represented



All years participation: Where participants came from (faculty excluded)

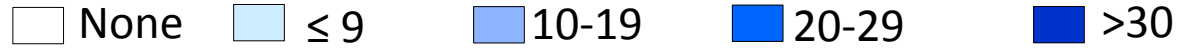


Number of LHDs, SHDs, and post codes represented each year



Who's attended? Total number of participants (excluding faculty) from each site, 2003-2014

▲ Training location

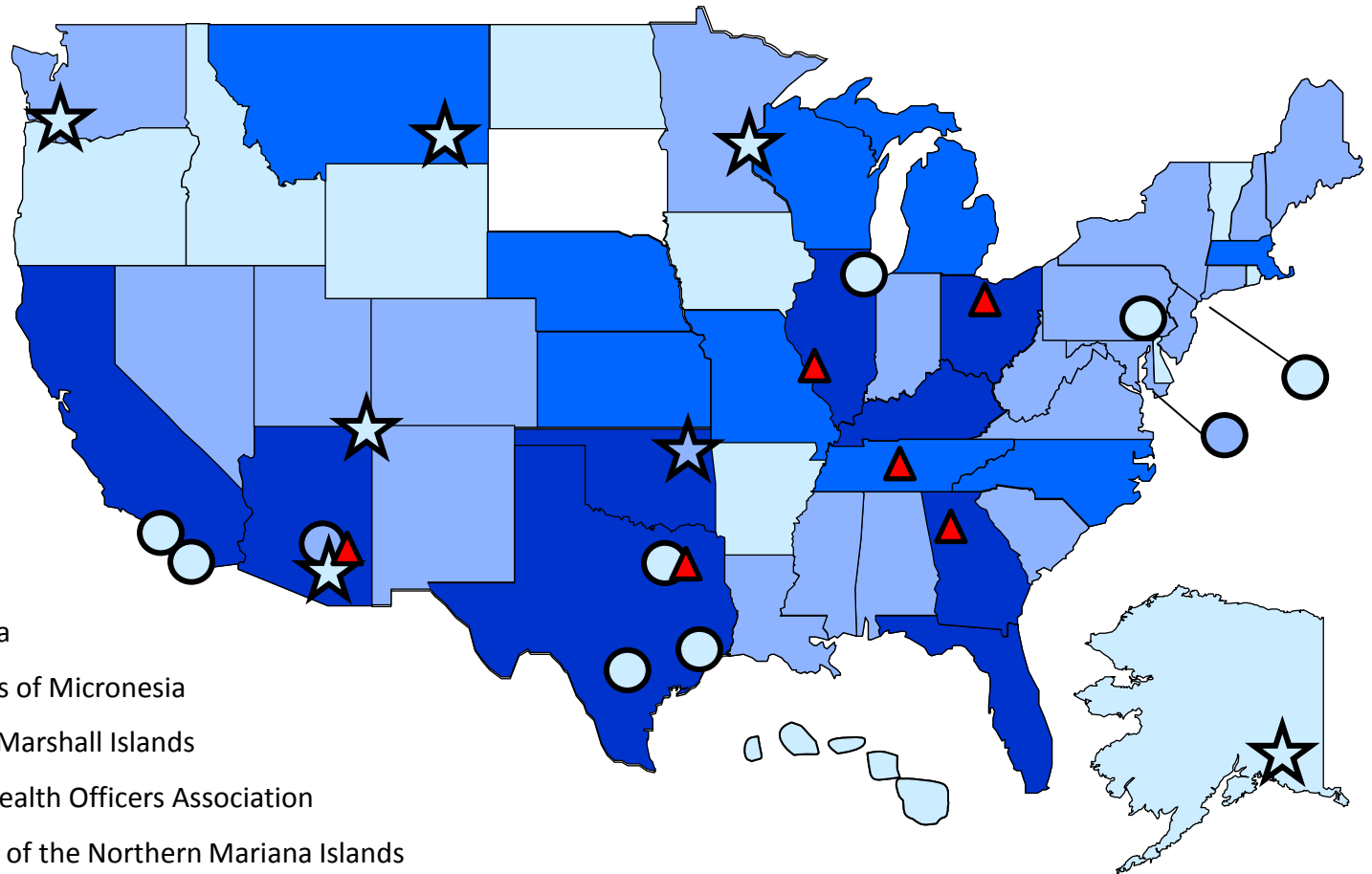


★ NPHII Tribal grantees

○ NPHII Local grantees

Territories

- Guam
- Palau
- Puerto Rico
- American Samoa
- Federated States of Micronesia
- Republic of the Marshall Islands
- Pacific Islands Health Officers Association
- Commonwealth of the Northern Mariana Islands



Who's attended? Number of participants per 1,000,000 population (excluding faculty) from each site, 2003-2014

▲ Training location

□ N/A

□ < 2

□ 2-5

□ 6-20

□ >20

★ NPHII Tribal grantees

○ NPHII Local grantees

Territories

■ Guam

■ Palau

□ Puerto Rico

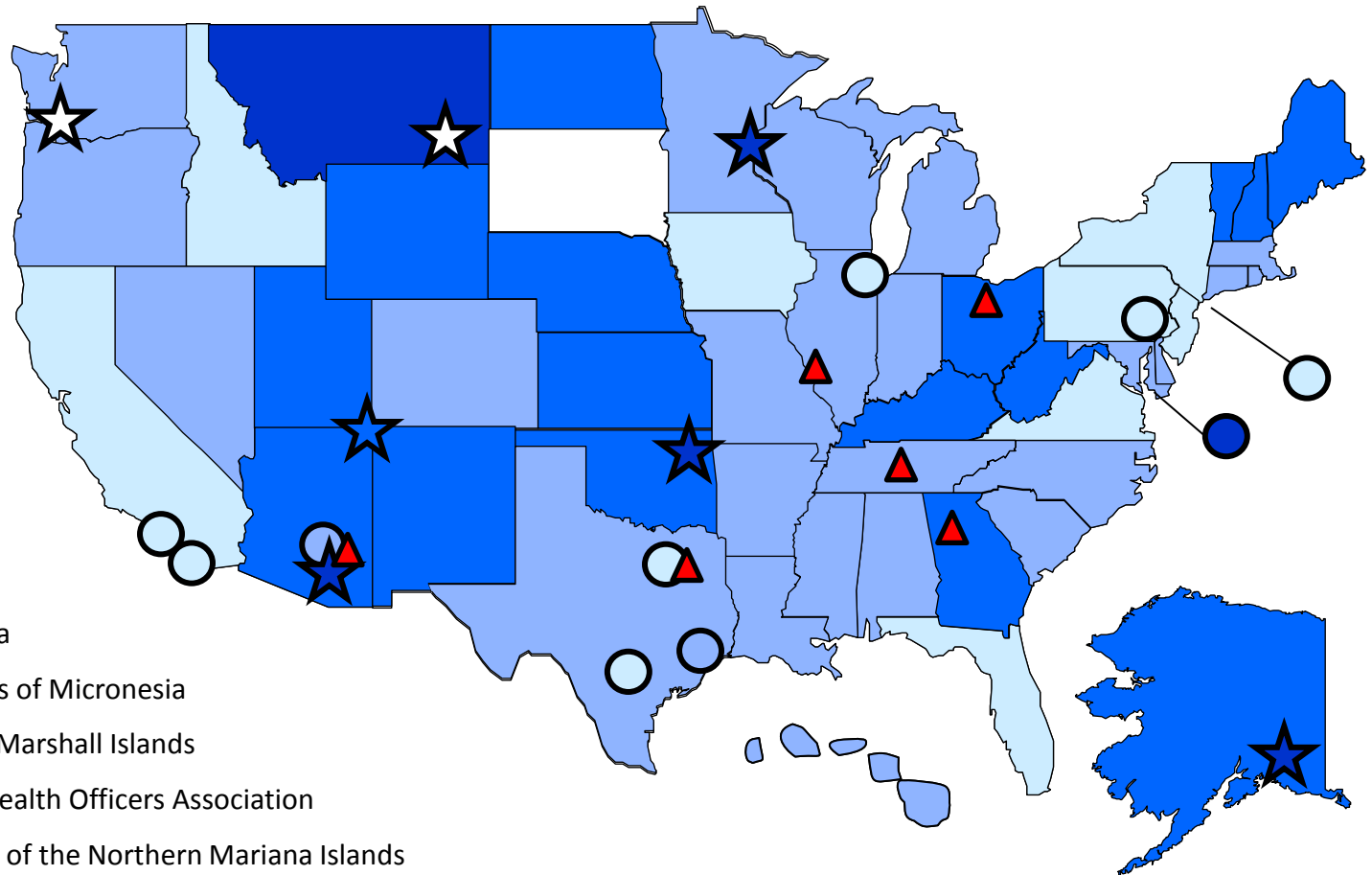
■ American Samoa

■ Federated States of Micronesia

■ Republic of the Marshall Islands

□ Pacific Islands Health Officers Association

■ Commonwealth of the Northern Mariana Islands



Who's attended? Number of participants (excluding faculty) from each site, 2014 only

▲ Training location

□ None □ 1 □ 2-3 □ 4-5 □ 6+

★ NPHII Tribal grantees

○ NPHII Local grantees

Territories

- Guam
- Palau
- Puerto Rico
- American Samoa
- Federated States of Micronesia
- Republic of the Marshall Islands
- Pacific Islands Health Officers Association
- Commonwealth of the Northern Mariana Islands

