

PSR Quick Start Guide

Quick Tips and Tools for Using the PSRs to Advance Evidence-Based Policy and Practice

- 2013 PSR Topics
- Excessive Alcohol Use
 - Food Safety
 - Healthcare-Associated Infections
 - Heart Disease and Stroke
 - HIV
 - Motor Vehicle Injuries
 - Nutrition, Physical Activity, and Obesity
 - Prescription Drug Overdose
 - Teen Pregnancy
 - Tobacco Use

2013 Prevention Status Reports

The Prevention Status Reports (PSRs) are designed to highlight—for all 50 states and the District of Columbia—the status of certain policies and practices designed to prevent or reduce 10 of the nation’s most important public health problems.

For each topic, there are 51 individualized reports (one for each state and the District of Columbia) that provide data and information to aid in public health planning and decision making.

PSR Framework

The information in each PSR is presented in a simple framework:



PROBLEM: What is the public health burden and impact of each health problem?

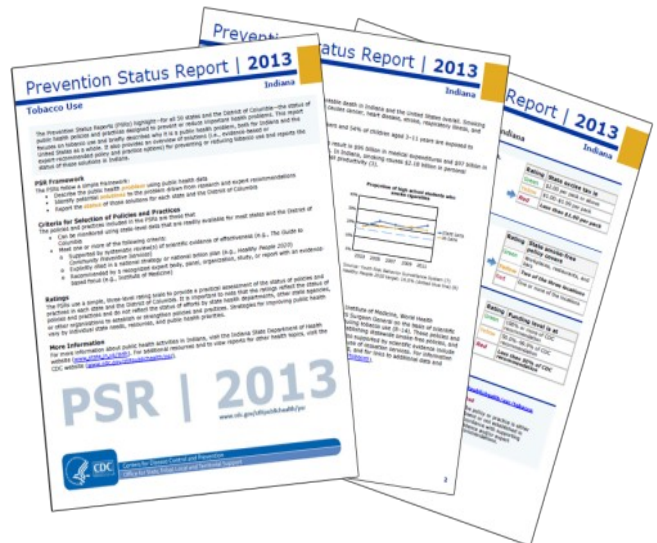
The PSRs use national and state data to provide a brief overview of the public health problems or concerns associated with each topic.

SOLUTIONS: What solutions are available to address these problems?

The PSRs identify evidence-based and/or expert-recommended policies and practices designed to prevent or reduce these health problems.

STATUS: To what extent are the solutions being implemented?

The PSRs use a simple, three-level rating scale—green, yellow, or red—to rate the extent to which selected policies or practices are being implemented in each state and the District of Columbia.



PSR Quick Start Guide

Using the PSRs to Advance Evidence-Based Policy and Practice

You can use the PSRs to support public health planning, priority setting, and communication in your state. Although the PSRs include data about public health problems, their *primary* focus is on policies and practices that can prevent or reduce health risk behaviors and lead to improved health outcomes. In other words, the PSRs focus on *solutions*. The status ratings for selected policies and practices are the most useful feature of the PSRs.

Below are some tips to help you start using the PSRs to increase the use of evidence-based public health practice and improve health outcomes in your state. The **PSR Quick Start Worksheet** on pages 3 and 4 can help you apply the PSR indicator ratings to this effort.

	Suggested Uses for the PSRs	Quick Start Questions
Planning and Priority Setting	1. Identify public health policy and practice priorities across a range of public health topics (or within a specific topic of interest)	<ul style="list-style-type: none"> Based on the PSR status ratings, which policies and practices provide the most opportunity for improvement?
	2. Inform existing state priorities, initiatives, programs, and strategies (e.g., state health improvement plans, coalition action plans, performance improvement plans, strategic plans)	<ul style="list-style-type: none"> What are the existing health priorities in your state? Can PSR data and information be used to inform decisions for addressing these priorities? Would adopting or strengthening the PSR policies and practices help advance these priorities? Which PSR indicators could be integrated into existing performance management or evaluation activities?
Communication	3. Highlight health problems and improvement opportunities	<ul style="list-style-type: none"> How can the PSRs (especially the <i>Problem</i> and <i>Status</i> sections) be used or adapted to educate stakeholders about the value and impact of prevention? <i>Think about use in legislative briefings, community meetings, grant writing, budget hearings, etc.</i>
	4. Promote use of evidence-based and expert-recommended public health policies and practices	<ul style="list-style-type: none"> How can data and information from the PSRs be used to educate stakeholders about evidence-based public health policies and practices? <i>Consider all rating levels: green (what's being done well) as well as any rating (green, yellow, or red) that could be improved. Which stakeholders should receive this information? Consider program staff, internal and/or external partners, decision-makers, local health departments, etc.</i>

Next Steps: Use the **PSR Quick Start Worksheet** to identify 1) factors that might challenge or support implementation and improvement of PSR policies and practices and 2) stakeholders who may be necessary to support and implement those improvements.

For more information about the PSRs, contact us at psrinfo@cdc.gov or visit the PSR website at www.cdc.gov/stltpublichealth/psr.

PSR Quick Start Guide

PSR Quick Start Worksheet

You can use this worksheet to identify areas of high performance, potential improvement areas, relevant contextual factors, and stakeholders. Refer to your state's PSRs (available at www.cdc.gov/stltpublichealth/psr) to complete the worksheet below.

First, identify potential improvement opportunities...				...then ask these questions about indicators with potential for improvement.		
PSR Policy/Practice Indicator	Identify your state's ratings for each indicator.			What factors challenge or support implementation of policies and practices in the PSRs?*	What stakeholders are necessary to support and implement these improvements?	
	Green	Yellow	Red	Challenging Factors	Supporting Factors	Important Stakeholders
Excessive Alcohol Use						
State beer tax						
State distilled spirits tax						
State wine tax						
Commercial host (dram shop) liability laws						
Local authority to regulate alcohol outlet density						
Food Safety						
Speed of pulsed-field gel electrophoresis (PFGE) testing of reported <i>E. coli</i> O157 cases						
Completeness of PFGE testing of reported <i>Salmonella</i> cases						
Healthcare-Associated Infections (HAIs)						
State health department participation in statewide HAI prevention efforts						
Heart Disease and Stroke						
Implementation of electronic health records						
Pharmacist collaborative drug therapy management policy						
HIV						
State Medicaid reimbursement for HIV screening						
State HIV testing laws						
Reporting of CD4 and HIV viral load data to state surveillance program						
Motor Vehicle Injury						
Seat belt law						
Child passenger restraint law						
Graduated driver licensing system						

PSR Quick Start Guide

First, identify potential improvement opportunities then, ask these questions about indicators with red or yellow ratings.		
PSR Policy/Practice Indicator	Identify your state's ratings for each indicator.			What factors challenge or support implementation of policies and practices in the PSRs?*	What stakeholders are necessary to support and implement these improvements?	
	Green	Yellow	Red	Challenging Factors	Supporting Factors	Important Stakeholders
Nutrition, Physical Activity, and Obesity						
Less nutritious foods and beverages not offered for sale in secondary schools						
State physical education time requirement for high school students						
State policy on nutrition standards for food and beverages sold or provided by government agencies						
Inclusion of nutrition and physical activity standards in state regulations of licensed child care facilities						
Average birth facility score for breastfeeding support						
Prescription Drug Overdose						
State pain clinic law						
Prescription drug monitoring programs following selected best practices						
Teen Pregnancy						
Expansion of state Medicaid family planning eligibility						
Tobacco Use						
State cigarette excise tax						
Comprehensive state smoke-free policy						
Funding for tobacco control						

*Examples of factors that might either challenge or support implementation of policies and practices include 1) whether the health issue is a priority for the state; 2) whether related state initiatives, programs, and strategies are already in place that could be built upon; and 3) whether the community supports change in this area.