

The 10 Essential Public Health Services

An Overview

Office for State, Tribal, Local and Territorial Support
Centers for Disease Control and Prevention
March 2014



Centers for Disease Control and Prevention
Office for State, Tribal, Local and Territorial Support

Objectives

- ❑ Describe the 10 Essential Public Health Services
- ❑ Review the history of the development of the 10 Essential Public Health Services
- ❑ Show the use of the 10 Essential Public Health Services as a framework for public health initiatives

Core Functions of Public Health Steering Committee: "Public Health in America"

□ Core Functions of Public Health

- Assessment
- Policy development
- Assurance

□ Purpose of Public Health

- Prevent epidemics and spread of disease
- Protect against environmental hazards
- Prevent injuries
- Promote and encourage healthy behaviors
- Respond to disasters and assist communities in recovery
- Assure the quality and accessibility of services

<http://iom.edu/Reports/1988/The-Future-of-Public-Health.aspx>

<http://www.health.gov/phfunctions/public.htm>



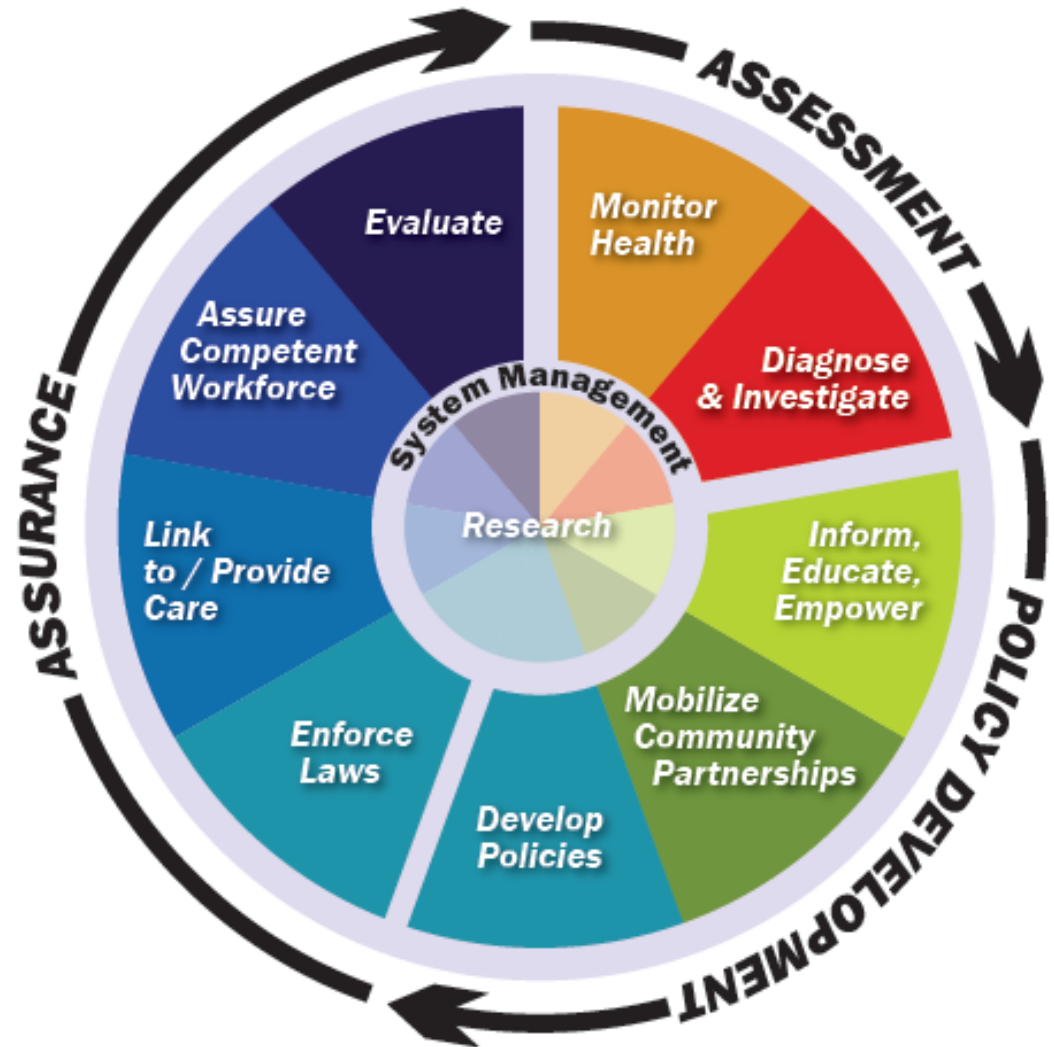
The 10 Essential Public Health Services

1. **Monitor health status** to identify and solve community health problems
2. **Diagnose and investigate** health problems and health hazards in the community
3. **Inform, educate, and empower** people about health issues
4. **Mobilize community partnerships** to identify and solve health problems
5. **Develop policies and plans** that support individual and community health efforts

The 10 Essential Public Health Services (cont'd.)

6. **Enforce laws and regulations** that protect health and ensure safety
7. **Link people to needed personal health services** and assure the provision of health care when otherwise unavailable
8. **Assure a competent public and personal healthcare workforce**
9. **Evaluate** effectiveness, accessibility, and quality of personal and population-based health services
10. **Research** for new insights and innovative solutions to health problems

Essential Public Health Services



The 10 Essential Services as a Framework

- ❑ Provide a foundation for any public health activity
- ❑ Describe public health at the state, tribal, local, and territorial levels
- ❑ Used as a foundation for the National Public Health Performance Standards (NPHPS)
 - NPHPS provides a description of the essential service at an optimal level that public health systems can use to assess their performance
- ❑ Provided structure for national voluntary public health accreditation

<http://www.cdc.gov/nphpsp/>

<http://www.phaboard.org/accreditation-overview/what-is-accreditation/>

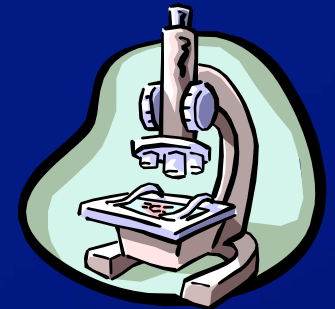
Essential Service (ES) 1 – Monitor Health to Identify and Solve Community Health Problems

- **Accurate, periodic assessment of the community's health status**
 - Identification of health risks
 - Attention to vital statistics and disparities
 - Identification of assets and resources
- **Use of methods and technology (e.g., mapping technology) to interpret and communicate data**
- **Maintenance of population health registries**



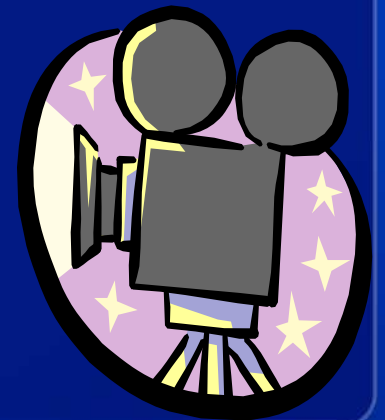
ES 2 – Diagnose and Investigate Health Problems and Hazards in the Community

- **Timely identification and investigation of health threats**
- **Availability of diagnostic services, including laboratory capacity**
- **Response plans to address major health threats**



ES 3 – Inform, Educate, and Empower People About Health Issues

- **Initiatives using health education and communication sciences to**
 - Build knowledge and shape attitudes
 - Inform decision-making choices
 - Develop skills and behaviors for healthy living
- **Health education and health promotion partnerships within the community to support healthy living**
- **Media advocacy and social marketing**



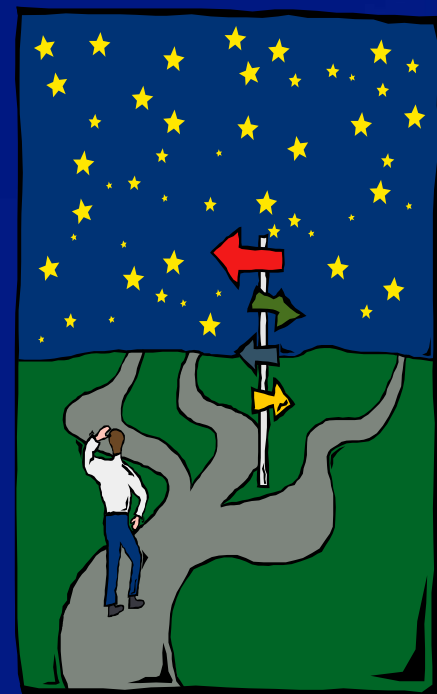


ES 4 – Mobilize Community Partnerships to Identify and Solve Health Problems

- **Constituency development**
- **Identification of system partners and stakeholders**
- **Coalition development**
- **Formal and informal partnerships to promote health improvement**

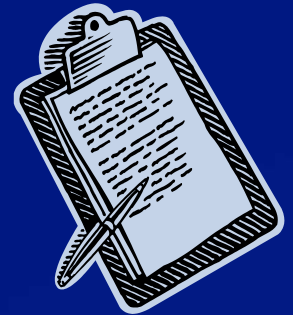
ES 5 – Develop Policies and Plans That Support Individual and Community Health Efforts

- Policy development to protect health and guide public health practice
- Community and state improvement planning
- Emergency response planning
- Alignment of resources to assure successful planning



ES 6 – Enforce Laws and Regulations That Protect Health and Ensure Safety

- Review, evaluation, and revision of legal authority, laws, and regulations
- Education about laws and regulations
- Advocating for regulations needed to protect and promote health
- Support of compliance efforts and enforcement as needed

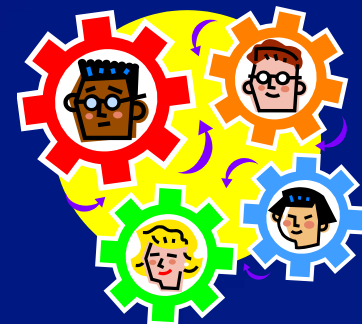


ES 7 – Link People to Needed Personal Health Services and Assure the Provision of Health Care When Otherwise Unavailable

- **Identification of populations with barriers to care**
- **Effective entry into a coordinated system of clinical care**
- **Ongoing care management**
- **Culturally appropriate and targeted health information for at risk population groups**
- **Transportation and other enabling services**

ES 8 – Assure a Competent Public and Personal Healthcare Workforce

- Assessing the public health and personal health workforce
- Maintaining public health workforce standards
 - Efficient processes for licensing /credentialing requirements
 - Use of public health competencies
- Continuing education and life-long learning
 - Leadership development
 - Cultural competence



ES 9 – Evaluate Effectiveness, Accessibility, and Quality of Personal and Population-Based Health Services

- **Evaluation must be ongoing and should examine:**
 - Personal health services
 - Population based services
 - The public health system
- **Quality Improvement**
- **Performance Management**



ES 10 – Research for New Insights and Innovative Solutions to Health Problems

- Identification and monitoring of innovative solutions and cutting-edge research to advance public health
- Linkages between public health practice and academic/research settings
- Epidemiological studies, health policy analyses and public health systems research



For More Information

- 10 Essential Public Health Services and the Public Health in America Statement
www.health.gov/phfunctions/public.htm
- Mobilizing for Action through Planning and Partnerships
www.naccho.org/topics/infrastructure/mapp/index.cfm
- National Public Health Performance Standards
www.cdc.gov/nphpsp
- Public Health Accreditation Board
www.phaboard.org

For more information, please contact CDC's Office for State, Tribal, Local and Territorial Support

4770 Buford Highway NE, Mailstop E-70, Atlanta, GA 30341

Telephone: 1-800-CDC-INFO (232-4636)/TTY: 1-888-232-6348

E-mail: OSTLTSfeedback@cdc.gov Web: <http://www.cdc.gov/stltpublichealth>

The findings and conclusions in this presentation are those of the authors and do not necessarily represent the official position of the Centers for Disease Control and Prevention.



Centers for Disease Control and Prevention

Office for State, Tribal, Local and Territorial Support