

Transmission of material in this release is embargoed until 8:30 a.m. (EST) Friday, January 10, 2014

USDL-14-0002

Technical information:

Household data: (202) 691-6378 • cpsinfo@bls.gov • www.bls.gov/cps
Establishment data: (202) 691-6555 • cesinfo@bls.gov • www.bls.gov/ces

Media contact: (202) 691-5902 • PressOffice@bls.gov

THE EMPLOYMENT SITUATION — DECEMBER 2013

The **unemployment rate** declined from 7.0 percent to 6.7 percent in December, while total **nonfarm payroll employment** edged up (+74,000), the U.S. Bureau of Labor Statistics reported today. Employment rose in retail trade and wholesale trade but was down in information.

Chart 1. Unemployment rate, seasonally adjusted, December 2011 – December 2013

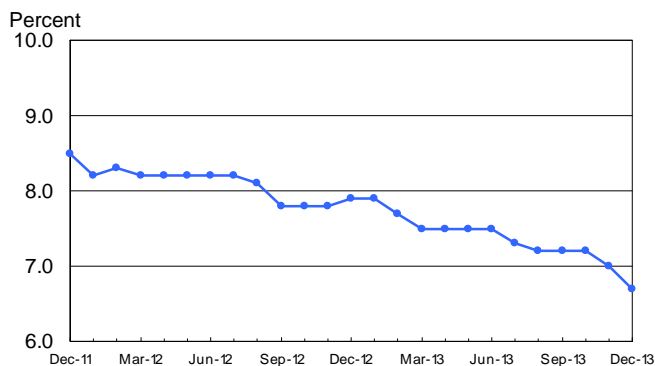
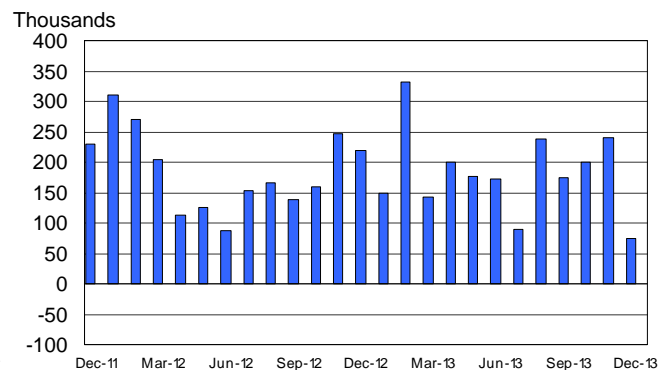


Chart 2. Nonfarm payroll employment over-the-month change, seasonally adjusted, December 2011 – December 2013



Revision of Seasonally Adjusted Household Survey Data

Seasonally adjusted household survey data have been revised using updated seasonal adjustment factors, a procedure done at the end of each calendar year. Seasonally adjusted estimates back to January 2009 were subject to revision. The unemployment rates for January 2013 through November 2013 (as originally published and as revised) appear in table A on page 5, along with additional information about the revisions.

Household Survey Data

The number of **unemployed persons** declined by 490,000 to 10.4 million in December, and the **unemployment rate** declined by 0.3 percentage point to 6.7 percent. Over the year, the number of unemployed persons and the unemployment rate were down by 1.9 million and 1.2 percentage points, respectively. (See table A-1.)

Among the **major worker groups**, the unemployment rates for adult men (6.3 percent) and whites (5.9 percent) declined in December. The rates for adult women (6.0 percent), teenagers (20.2 percent), blacks (11.9 percent), and Hispanics (8.3 percent) showed little change. The jobless rate for Asians was 4.1 percent (not seasonally adjusted), down by 2.5 percentage points over the year. (See tables A-1, A-2, and A-3.)

Among the unemployed, the number of **job losers and persons who completed temporary jobs** decreased by 365,000 in December to 5.4 million. The number of **long-term unemployed** (those jobless for 27 weeks or more), at 3.9 million, showed little change; these individuals accounted for 37.7 percent of the unemployed. The number of long-term unemployed has declined by 894,000 over the year. (See tables A-11 and A-12.)

The **civilian labor force participation rate** declined by 0.2 percentage point to 62.8 percent in December, offsetting a change of the same magnitude in November. In December, the **employment-population ratio** was unchanged at 58.6 percent. The labor force participation rate declined by 0.8 percentage point over the year, while the employment-population ratio was unchanged. (See table A-1.)

The number of persons employed **part time for economic reasons** (sometimes referred to as involuntary part-time workers) was essentially unchanged at 7.8 million in December. These individuals were working part time because their hours had been cut back or because they were unable to find full-time work. (See table A-8.)

In December, 2.4 million persons were **marginally attached to the labor force**, little changed from a year earlier. (The data are not seasonally adjusted.) These individuals were not in the labor force, wanted and were available for work, and had looked for a job sometime in the prior 12 months. They were not counted as unemployed because they had not searched for work in the 4 weeks preceding the survey. (See table A-16.)

Among the marginally attached, there were 917,000 **discouraged workers** in December, down by 151,000 from a year earlier. Discouraged workers are persons not currently looking for work because they believe no jobs are available for them. The remaining 1.5 million persons marginally attached to the labor force in December had not searched for work for reasons such as school attendance or family responsibilities. (See table A-16.)

Establishment Survey Data

Total **nonfarm payroll employment** edged up in December (+74,000). In 2013, job growth averaged 182,000 per month, about the same as in 2012 (+183,000 per month). In December, job gains occurred in retail trade and wholesale trade, while employment declined in information. (See table B-1.)

Employment in **retail trade** rose by 55,000 in December. Within the industry, job gains occurred in food and beverage stores (+12,000), clothing and accessories stores (+12,000), general merchandise

stores (+8,000), and motor vehicle and parts dealers (+7,000). Retail trade added an average of 32,000 jobs per month in 2013.

In December, **wholesale trade** added 15,000 jobs. Most of the job growth occurred in electronic markets and agents and brokers (+9,000). Wholesale trade added an average of 8,000 jobs per month in 2013.

Employment in **professional and business services** continued to trend up in December (+19,000). In 2013, job growth in professional and business services averaged 53,000 per month. Within the industry, temporary help services added 40,000 jobs in December, while employment in accounting and bookkeeping services declined by 25,000.

Manufacturing employment continued to trend up in December (+9,000). Employment rose in primary metals (+4,000) and petroleum and coal products (+2,000), while electronic instruments (-4,000) lost jobs. Manufacturing added 77,000 jobs in 2013, compared with an increase of 154,000 jobs in 2012.

Employment in **mining** edged up in December (+5,000). The industry added 29,000 jobs over the year.

Health care employment changed little in December (-6,000). Employment gains in the industry averaged 17,000 per month in 2013, compared with an average monthly gain of 27,000 in 2012.

Employment in **information** fell by 12,000 in December, driven by a decline in the motion picture and sound recording industry (-14,000). Employment in information was essentially unchanged over the year.

Construction employment edged down in December (-16,000). However, in 2013, the industry added an average of 10,000 jobs per month. Employment in nonresidential specialty trade contractors declined by 13,000 in December, possibly reflecting unusually cold weather in parts of the country.

Employment in other major industries, including **transportation and warehousing, financial activities, leisure and hospitality**, and **government**, changed little in December.

The **average workweek for all employees** on private nonfarm payrolls edged down by 0.1 hour to 34.4 hours in December. The manufacturing workweek was unchanged, at 41.0 hours, and factory overtime edged up by 0.1 hour to 3.5 hours. The average workweek for **production and nonsupervisory employees** on private nonfarm payrolls edged down by 0.1 hour to 33.6 hours. (See tables B-2 and B-7.)

In December, **average hourly earnings for all employees** on private nonfarm payrolls edged up by 2 cents to \$24.17. Over the year, average hourly earnings have risen by 42 cents, or 1.8 percent. In December, average hourly earnings of private-sector **production and nonsupervisory employees** increased by 3 cents to \$20.35. (See tables B-3 and B-8.)

The change in total nonfarm payroll employment for October remained at +200,000, and the change for November was revised from +203,000 to +241,000. With these revisions, employment gains in October and November were 38,000 higher than previously reported.

The Employment Situation for January is scheduled to be released on Friday, February 7, 2014, at 8:30 a.m. (EST).

Revisions in the Establishment Survey Data

Effective with the release of The Employment Situation for January 2014 on February 7, 2014, the Current Employment Statistics (CES) survey will introduce revisions to nonfarm payroll employment, hours, and earnings data to reflect the annual benchmark adjustment for March 2013 and updated seasonal adjustment factors. Not seasonally adjusted data beginning with April 2012 and seasonally adjusted data beginning with January 2009 are subject to revision.

Upcoming Changes to the Household Survey

Effective with the release of The Employment Situation for January 2014 on February 7, 2014, new population controls will be used in the Current Population Survey (CPS) estimation process. These new controls reflect the annual updating of intercensal population estimates by the U.S. Census Bureau. In accordance with usual practice, historical data will not be revised to incorporate the new controls; consequently, household survey data for January 2014 will not be directly comparable with data for December 2013 or earlier periods. A table showing the effects of the new controls on the major labor force series will be included in the January 2014 release.

Upcoming Change to the Household Survey Tables

Effective with the release of The Employment Situation for January 2014 on February 7, 2014, household survey table A-10 will include two new seasonally adjusted series for women age 55 and over—the number of unemployed persons and the unemployment rate. These will replace the series that are currently displayed for this group, which are not seasonally adjusted.

Revision of Seasonally Adjusted Household Survey Data

At the end of each calendar year, BLS routinely updates the seasonal adjustment factors for the labor force series derived from the Current Population Survey (CPS), or household survey. As a result of this process, seasonally adjusted data for January 2009 through November 2013 were subject to revision.

Table A shows the unemployment rates for January 2013 through November 2013, as first published and as revised. The rates changed by one-tenth of a percentage point in 6 of the 11 months and were unchanged in the remaining 5 months. Revised seasonally adjusted data for other major labor force series beginning in December 2012 appear in table B.

An article describing the seasonal adjustment methodology for the household survey data and revised data for January 2013 through November 2013 is available at www.bls.gov/cps/cpsrs2014.pdf.

Historical data for the household series contained in the A tables of this release can be accessed at www.bls.gov/cps/cpsatabs.htm. Revised historical seasonally adjusted data are available at www.bls.gov/cps/data.htm and <http://download.bls.gov/pub/time.series/ln>.

**Table A. Seasonally adjusted unemployment rates in 2013 and changes due to revision
January - November 2013**

Month	As first computed	As revised	Change
January	7.9	7.9	0.0
February	7.7	7.7	.0
March	7.6	7.5	-.1
April	7.5	7.5	.0
May	7.6	7.5	-.1
June	7.6	7.5	-.1
July	7.4	7.3	-.1
August	7.3	7.2	-.1
September	7.2	7.2	.0
October	7.3	7.2	-.1
November	7.0	7.0	.0

HOUSEHOLD DATA

Table B. Employment status of the civilian population by sex and age, seasonally adjusted

[Numbers in thousands]

Employment status, sex, and age	2012	2013											
	Dec.	Jan.	Feb.	Mar.	Apr.	May	June	July	Aug.	Sept.	Oct.	Nov.	Dec.
TOTAL													
Civilian noninstitutional population ¹	244,350	244,663	244,828	244,995	245,175	245,363	245,552	245,756	245,959	246,168	246,381	246,567	246,745
Civilian labor force	155,485	155,699	155,511	155,099	155,359	155,609	155,822	155,693	155,435	155,473	154,625	155,284	154,937
Participation rate	63.6	63.6	63.5	63.3	63.4	63.4	63.5	63.4	63.2	63.2	62.8	63.0	62.8
Employed	143,212	143,384	143,464	143,393	143,676	143,919	144,075	144,285	144,179	144,270	143,485	144,443	144,586
Employment-population ratio	58.6	58.6	58.6	58.5	58.6	58.7	58.7	58.7	58.6	58.6	58.2	58.6	58.6
Unemployed	12,273	12,315	12,047	11,706	11,683	11,690	11,747	11,408	11,256	11,203	11,140	10,841	10,351
Unemployment rate	7.9	7.9	7.7	7.5	7.5	7.5	7.5	7.3	7.2	7.2	7.2	7.0	6.7
Men, 20 years and over													
Civilian noninstitutional population ¹	109,308	109,448	109,541	109,635	109,736	109,839	109,943	110,054	110,172	110,292	110,414	110,515	110,613
Civilian labor force	79,681	79,984	79,897	79,731	79,868	79,867	79,855	79,871	79,610	79,757	79,267	79,700	79,464
Participation rate	72.9	73.1	72.9	72.7	72.8	72.7	72.6	72.6	72.3	72.3	71.8	72.1	71.8
Employed	73,924	74,084	74,183	74,190	74,161	74,137	74,265	74,301	74,015	74,151	73,808	74,373	74,467
Employment-population ratio	67.6	67.7	67.7	67.7	67.6	67.5	67.5	67.5	67.2	67.2	66.8	67.3	67.3
Unemployed	5,757	5,900	5,714	5,541	5,707	5,729	5,590	5,570	5,595	5,605	5,459	5,328	4,997
Unemployment rate	7.2	7.4	7.2	6.9	7.1	7.2	7.0	7.0	7.0	7.0	6.9	6.7	6.3
Women, 20 years and over													
Civilian noninstitutional population ¹	118,170	118,348	118,433	118,520	118,612	118,708	118,804	118,907	119,018	119,131	119,246	119,341	119,433
Civilian labor force	70,031	69,817	69,770	69,629	69,764	69,871	70,099	69,986	70,115	69,898	69,652	69,871	69,831
Participation rate	59.3	59.0	58.9	58.7	58.8	58.9	59.0	58.9	58.9	58.7	58.4	58.5	58.5
Employed	64,901	64,790	64,911	64,838	65,148	65,323	65,340	65,514	65,743	65,539	65,229	65,547	65,617
Employment-population ratio	54.9	54.7	54.8	54.7	54.9	55.0	55.0	55.1	55.2	55.0	54.7	54.9	54.9
Unemployed	5,131	5,027	4,859	4,791	4,616	4,548	4,760	4,473	4,372	4,359	4,423	4,323	4,214
Unemployment rate	7.3	7.2	7.0	6.9	6.6	6.5	6.8	6.4	6.2	6.2	6.4	6.2	6.0
Both sexes, 16 to 19 years													
Civilian noninstitutional population ¹	16,871	16,867	16,854	16,840	16,827	16,816	16,805	16,795	16,770	16,745	16,721	16,710	16,700
Civilian labor force	5,773	5,898	5,844	5,739	5,727	5,872	5,868	5,836	5,710	5,818	5,706	5,713	5,642
Participation rate	34.2	35.0	34.7	34.1	34.0	34.9	34.9	34.7	34.1	34.7	34.1	34.2	33.8
Employed	4,387	4,510	4,370	4,365	4,368	4,459	4,470	4,470	4,421	4,580	4,448	4,523	4,502
Employment-population ratio	26.0	26.7	25.9	25.9	26.0	26.5	26.6	26.6	26.4	27.4	26.6	27.1	27.0
Unemployed	1,385	1,388	1,474	1,374	1,360	1,413	1,398	1,365	1,289	1,239	1,258	1,190	1,140
Unemployment rate	24.0	23.5	25.2	23.9	23.7	24.1	23.8	23.4	22.6	21.3	22.0	20.8	20.2

¹ The population figures are not adjusted for seasonal variation.

NOTE: Seasonally adjusted data have been revised to reflect updated seasonal adjustment factors.

HOUSEHOLD DATA

Summary table A. Household data, seasonally adjusted

[Numbers in thousands]

Category	Dec. 2012	Oct. 2013	Nov. 2013	Dec. 2013	Change from: Nov. 2013- Dec. 2013
Employment status					
Civilian noninstitutional population.....	244,350	246,381	246,567	246,745	178
Civilian labor force.....	155,485	154,625	155,284	154,937	-347
Participation rate.....	63.6	62.8	63.0	62.8	-0.2
Employed.....	143,212	143,485	144,443	144,586	143
Employment-population ratio.....	58.6	58.2	58.6	58.6	0.0
Unemployed.....	12,273	11,140	10,841	10,351	-490
Unemployment rate.....	7.9	7.2	7.0	6.7	-0.3
Not in labor force.....	88,865	91,756	91,283	91,808	525
Unemployment rates					
Total, 16 years and over.....	7.9	7.2	7.0	6.7	-0.3
Adult men (20 years and over).....	7.2	6.9	6.7	6.3	-0.4
Adult women (20 years and over).....	7.3	6.4	6.2	6.0	-0.2
Teenagers (16 to 19 years).....	24.0	22.0	20.8	20.2	-0.6
White.....	6.9	6.3	6.1	5.9	-0.2
Black or African American.....	14.0	13.0	12.4	11.9	-0.5
Asian (not seasonally adjusted).....	6.6	5.2	5.3	4.1	-
Hispanic or Latino ethnicity.....	9.5	9.0	8.7	8.3	-0.4
Total, 25 years and over.....	6.5	6.0	5.8	5.6	-0.2
Less than a high school diploma.....	11.6	10.8	10.6	9.8	-0.8
High school graduates, no college.....	8.1	7.3	7.3	7.1	-0.2
Some college or associate degree.....	6.9	6.3	6.4	6.1	-0.3
Bachelor's degree and higher.....	4.0	3.8	3.4	3.3	-0.1
Reason for unemployment					
Job losers and persons who completed temporary jobs.....	6,475	6,162	5,731	5,366	-365
Job leavers.....	1,000	842	890	862	-28
Reentrants.....	3,615	3,104	3,065	3,036	-29
New entrants.....	1,296	1,217	1,169	1,201	32
Duration of unemployment					
Less than 5 weeks.....	2,688	2,794	2,439	2,255	-184
5 to 14 weeks.....	2,876	2,636	2,585	2,506	-79
15 to 26 weeks.....	1,862	1,777	1,742	1,651	-91
27 weeks and over.....	4,772	4,047	4,044	3,878	-166
Employed persons at work part time					
Part time for economic reasons.....	7,929	8,016	7,723	7,771	48
Slack work or business conditions.....	4,991	5,025	4,869	4,884	15
Could only find part-time work.....	2,604	2,585	2,499	2,592	93
Part time for noneconomic reasons.....	18,825	18,755	18,858	18,731	-127
Persons not in the labor force (not seasonally adjusted)					
Marginally attached to the labor force.....	2,614	2,283	2,096	2,427	-
Discouraged workers.....	1,068	815	762	917	-

- Over-the-month changes are not displayed for not seasonally adjusted data.

NOTE: Persons whose ethnicity is identified as Hispanic or Latino may be of any race. Detail for the seasonally adjusted data shown in this table will not necessarily add to totals because of the independent seasonal adjustment of the various series. Updated population controls are introduced annually with the release of January data.

ESTABLISHMENT DATA
Summary table B. Establishment data, seasonally adjusted

Category	Dec. 2012	Oct. 2013	Nov. 2013 ^p	Dec. 2013 ^p
EMPLOYMENT BY SELECTED INDUSTRY (Over-the-month change, in thousands)				
Total nonfarm.....	219	200	241	74
Total private.....	224	217	226	87
Goods-producing.....	58	30	51	-3
Mining and logging.....	7	5	1	4
Construction.....	38	8	19	-16
Manufacturing.....	13	17	31	9
Durable goods ¹	11	11	21	6
Motor vehicles and parts.....	1.4	3.3	5.6	1.0
Nondurable goods.....	2	6	10	3
Private service-providing ¹	166	187	175	90
Wholesale trade.....	6.5	-5.8	9.8	15.4
Retail trade.....	6.2	55.3	21.9	55.3
Transportation and warehousing.....	34.8	0.7	34.9	-0.6
Information.....	-9	2	1	-12
Financial activities.....	9	9	1	4
Professional and business services ¹	35	52	41	19
Temporary help services.....	12.3	13.0	12.8	40.4
Education and health services ¹	36	26	41	0
Health care and social assistance.....	42.9	21.9	35.4	-1.0
Leisure and hospitality.....	40	45	20	9
Other services.....	6	4	4	1
Government.....	-5	-17	15	-13
WOMEN AND PRODUCTION AND NONSUPERVISORY EMPLOYEES AS A PERCENT OF ALL EMPLOYEES ²				
Total nonfarm women employees.....	49.3	49.4	49.4	49.4
Total private women employees.....	47.9	47.9	47.9	48.0
Total private production and nonsupervisory employees.....	82.6	82.6	82.6	82.6
HOURS AND EARNINGS ALL EMPLOYEES				
Total private				
Average weekly hours.....	34.5	34.4	34.5	34.4
Average hourly earnings.....	\$23.75	\$24.11	\$24.15	\$24.17
Average weekly earnings.....	\$819.38	\$829.38	\$833.18	\$831.45
Index of aggregate weekly hours (2007=100) ³	97.5	98.8	99.3	99.1
Over-the-month percent change.....	0.5	0.1	0.5	-0.2
Index of aggregate weekly payrolls (2007=100) ⁴	110.4	113.7	114.4	114.2
Over-the-month percent change.....	0.8	0.4	0.6	-0.2
HOURS AND EARNINGS PRODUCTION AND NONSUPERVISORY EMPLOYEES				
Total private				
Average weekly hours.....	33.7	33.6	33.7	33.6
Average hourly earnings.....	\$19.93	\$20.27	\$20.32	\$20.35
Average weekly earnings.....	\$671.64	\$681.07	\$684.78	\$683.76
Index of aggregate weekly hours (2002=100) ³	104.9	106.2	106.8	106.5
Over-the-month percent change.....	0.2	-0.1	0.6	-0.3
Index of aggregate weekly payrolls (2002=100) ⁴	139.6	143.8	144.9	144.8
Over-the-month percent change.....	0.5	0.0	0.8	-0.1
DIFFUSION INDEX (Over 1-month span) ⁵				
Total private (266 industries).....	65.2	61.7	63.2	58.8
Manufacturing (81 industries).....	58.0	56.8	63.6	60.5

¹ Includes other industries, not shown separately.

² Data relate to production employees in mining and logging and manufacturing, construction employees in construction, and nonsupervisory employees in the service-providing industries.

³ The indexes of aggregate weekly hours are calculated by dividing the current month's estimates of aggregate hours by the corresponding annual average aggregate hours.

⁴ The indexes of aggregate weekly payrolls are calculated by dividing the current month's estimates of aggregate weekly payrolls by the corresponding annual average aggregate weekly payrolls.

⁵ Figures are the percent of industries with employment increasing plus one-half of the industries with unchanged employment, where 50 percent indicates an equal balance between industries with increasing and decreasing employment.

p Preliminary

Frequently Asked Questions about Employment and Unemployment Estimates

1. Why are there two monthly measures of employment?

The household survey and establishment survey both produce sample-based estimates of employment, and both have strengths and limitations. The establishment survey employment series has a smaller margin of error on the measurement of month-to-month change than the household survey because of its much larger sample size. An over-the-month employment change of about 100,000 is statistically significant in the establishment survey, while the threshold for a statistically significant change in the household survey is about 400,000. However, the household survey has a more expansive scope than the establishment survey because it includes self-employed workers whose businesses are unincorporated, unpaid family workers, agricultural workers, and private household workers, who are excluded by the establishment survey. The household survey also provides estimates of employment for demographic groups. For more information on the differences between the two surveys, please visit www.bls.gov/web/empsit/ces_cps_trends.pdf.

2. Are undocumented immigrants counted in the surveys?

It is likely that both surveys include at least some undocumented immigrants. However, neither the establishment nor the household survey is designed to identify the legal status of workers. Therefore, it is not possible to determine how many are counted in either survey. The establishment survey does not collect data on the legal status of workers. The household survey does include questions which identify the foreign and native born, but it does not include questions about the legal status of the foreign born. Data on the foreign and native born are published each month in table A-7 of The Employment Situation news release.

3. Why does the establishment survey have revisions?

The establishment survey revises published estimates to improve its data series by incorporating additional information that was not available at the time of the initial publication of the estimates. The establishment survey revises its initial monthly estimates twice, in the immediately succeeding 2 months, to incorporate additional sample receipts from respondents in the survey and recalculated seasonal adjustment factors. For more information on the monthly revisions, please visit www.bls.gov/ces/cesrevinfo.htm.

On an annual basis, the establishment survey incorporates a benchmark revision that re-anchors estimates to nearly complete employment counts available from unemployment insurance tax records. The benchmark helps to control for sampling and modeling errors in the estimates. For more information on the annual benchmark revision, please visit www.bls.gov/web/empsit/cesbmart.htm.

4. Does the establishment survey sample include small firms?

Yes; about 40 percent of the establishment survey sample is comprised of business establishments with fewer than 20 employees. The establishment survey sample is designed to maximize the reliability of the statewide total nonfarm employment estimate; firms from all states, size classes, and industries are appropriately sampled to achieve that goal.

5. Does the establishment survey account for employment from new businesses?

Yes; monthly establishment survey estimates include an adjustment to account for the net employment change generated by business births and deaths. The adjustment comes from an econometric model that forecasts the monthly net jobs impact of business births and deaths based on the actual past values of the net impact that can be observed with a lag from the Quarterly Census of Employment and Wages. The establishment survey uses modeling rather than sampling for this purpose because the survey is not immediately able to bring new businesses into the sample. There is an unavoidable lag between the birth of a new firm and its appearance on the sampling frame and availability for selection. BLS adds new businesses to the survey twice a year.

6. Is the count of unemployed persons limited to just those people receiving unemployment insurance benefits?

No; the estimate of unemployment is based on a monthly sample survey of households. All persons who are without jobs and are actively seeking and available to work are included among the unemployed. (People on temporary layoff are included even if they do not actively seek work.) There is no requirement or question relating to unemployment insurance benefits in the monthly survey.

7. Does the official unemployment rate exclude people who want a job but are not currently looking for work?

Yes; however, there are separate estimates of persons outside the labor force who want a job, including those who are not currently looking because they believe no jobs are available (discouraged workers). In addition, alternative measures of labor underutilization (some of which include discouraged workers and other groups not officially counted as unemployed) are published each month in table A-15 of The Employment Situation news release. For more information about these alternative measures, please visit www.bls.gov/cps/lfcharacteristics.htm#altmeasures.

8. How can unusually severe weather affect employment and hours estimates?

In the establishment survey, the reference period is the pay period that includes the 12th of the month. Unusually severe weather is more likely to have an impact on average weekly hours than on employment. Average weekly hours are estimated for paid time during the pay period, including pay for holidays, sick leave, or other time off. The impact of severe weather on hours estimates typically, but not always, results in a reduction in average weekly hours. For example, some employees may be off work for part of the pay period and not receive pay for the time missed, while some workers, such as those dealing with cleanup or repair, may work extra hours.

In order for severe weather conditions to reduce the estimate of payroll employment, employees have to be off work without pay for the entire pay period. Slightly more than 20 percent of all employees in the payroll survey sample have a weekly pay period. Employees who receive pay for any part of the pay period, even 1 hour, are counted in the payroll employment figures. It is not possible to quantify the effect of extreme weather on estimates of over-the-month change in employment.

In the household survey, the reference period is generally the calendar week that includes the 12th of the month. Persons who miss the entire week's work for weather-related events are counted as employed whether or not they are paid for the time off. The household survey collects data on the number of persons who had a job but were not at work due to bad weather. It also provides a measure of the number of persons who usually work full time but had reduced hours. Current and historical data are available on the household survey's most requested statistics page at <http://data.bls.gov/cgi-bin/surveymost?ln>.

Technical Note

This news release presents statistics from two major surveys, the Current Population Survey (CPS; household survey) and the Current Employment Statistics survey (CES; establishment survey). The household survey provides information on the labor force, employment, and unemployment that appears in the "A" tables, marked HOUSEHOLD DATA. It is a sample survey of about 60,000 eligible households conducted by the U.S. Census Bureau for the U.S. Bureau of Labor Statistics (BLS).

The establishment survey provides information on employment, hours, and earnings of employees on nonfarm payrolls; the data appear in the "B" tables, marked ESTABLISHMENT DATA. BLS collects these data each month from the payroll records of a sample of nonagricultural business establishments. Each month the CES program surveys about 145,000 businesses and government agencies, representing approximately 557,000 individual worksites, in order to provide detailed industry data on employment, hours, and earnings of workers on nonfarm payrolls. The active sample includes approximately one-third of all nonfarm payroll employees.

For both surveys, the data for a given month relate to a particular week or pay period. In the household survey, the reference period is generally the calendar week that contains the 12th day of the month. In the establishment survey, the reference period is the pay period including the 12th, which may or may not correspond directly to the calendar week.

Coverage, definitions, and differences between surveys

Household survey. The sample is selected to reflect the entire civilian noninstitutional population. Based on responses to a series of questions on work and job search activities, each person 16 years and over in a sample household is classified as employed, unemployed, or not in the labor force.

People are classified as *employed* if they did any work at all as paid employees during the reference week; worked in their own business, profession, or on their own farm; or worked without pay at least 15 hours in a family business or farm. People are also counted as employed if they were temporarily absent from their jobs because of illness, bad weather, vacation, labor-management disputes, or personal reasons.

People are classified as *unemployed* if they meet all of the following criteria: they had no employment during the reference week; they were available for work at that time; and they made specific efforts to find employment sometime during the 4-week period ending with the reference week. Persons laid off from a job and expecting recall need not be looking for work to be counted as unemployed. The unemployment data derived from the household survey in no way depend upon the eligibility for or receipt of unemployment insurance benefits.

The *civilian labor force* is the sum of employed and unemployed persons. Those persons not classified as

employed or unemployed are *not in the labor force*. The *unemployment rate* is the number unemployed as a percent of the labor force. The *labor force participation rate* is the labor force as a percent of the population, and the *employment-population ratio* is the employed as a percent of the population. Additional information about the household survey can be found at www.bls.gov/cps/documentation.htm.

Establishment survey. The sample establishments are drawn from private nonfarm businesses such as factories, offices, and stores, as well as from federal, state, and local government entities. *Employees on nonfarm payrolls* are those who received pay for any part of the reference pay period, including persons on paid leave. Persons are counted in each job they hold. *Hours and earnings* data are produced for the private sector for all employees and for production and nonsupervisory employees. *Production and nonsupervisory* employees are defined as production and related employees in manufacturing and mining and logging, construction workers in construction, and non-supervisory employees in private service-providing industries.

Industries are classified on the basis of an establishment's principal activity in accordance with the 2012 version of the North American Industry Classification System. Additional information about the establishment survey can be found at www.bls.gov/ces/.

Differences in employment estimates. The numerous conceptual and methodological differences between the household and establishment surveys result in important distinctions in the employment estimates derived from the surveys. Among these are:

- The household survey includes agricultural workers, self-employed workers whose businesses are unincorporated, unpaid family workers, and private household workers among the employed. These groups are excluded from the establishment survey.
- The household survey includes people on unpaid leave among the employed. The establishment survey does not.
- The household survey is limited to workers 16 years of age and older. The establishment survey is not limited by age.
- The household survey has no duplication of individuals, because individuals are counted only once, even if they hold more than one job. In the establishment survey, employees working at more than one job and thus appearing on more than one payroll are counted separately for each appearance.

Seasonal adjustment

Over the course of a year, the size of the nation's labor force and the levels of employment and unemployment undergo regularly occurring fluctuations. These events may result from seasonal changes in weather, major holidays, and the opening and closing of schools. The effect of such seasonal variation can be very large.

Because these seasonal events follow a more or less regular pattern each year, their influence on the level of a series can be tempered by adjusting for regular seasonal variation. These adjustments make nonseasonal developments, such as declines in employment or increases in the participation of women in the labor force, easier to spot. For example, in the household survey, the large number of youth entering the labor force each June is likely to obscure any other changes that have taken place relative to May, making it difficult to determine if the level of economic activity has risen or declined. Similarly, in the establishment survey, payroll employment in education declines by about 20 percent at the end of the spring term and later rises with the start of the fall term, obscuring the underlying employment trends in the industry. Because seasonal employment changes at the end and beginning of the school year can be estimated, the statistics can be adjusted to make underlying employment patterns more discernable. The seasonally adjusted figures provide a more useful tool with which to analyze changes in month-to-month economic activity.

Many seasonally adjusted series are independently adjusted in both the household and establishment surveys. However, the adjusted series for many major estimates, such as total payroll employment, employment in most major sectors, total employment, and unemployment are computed by aggregating independently adjusted component series. For example, total unemployment is derived by summing the adjusted series for four major age-sex components; this differs from the unemployment estimate that would be obtained by directly adjusting the total or by combining the duration, reasons, or more detailed age categories.

For both the household and establishment surveys, a concurrent seasonal adjustment methodology is used in which new seasonal factors are calculated each month using all relevant data, up to and including the data for the current month. In the household survey, new seasonal factors are used to adjust only the current month's data. In the establishment survey, however, new seasonal factors are used each month to adjust the three most recent monthly estimates. The prior 2 months are routinely revised to incorporate additional sample reports and recalculated seasonal adjustment factors. In both surveys, 5-year revisions to historical data are made once a year.

Reliability of the estimates

Statistics based on the household and establishment surveys are subject to both sampling and nonsampling

error. When a sample, rather than the entire population, is surveyed, there is a chance that the sample estimates may differ from the true population values they represent. The component of this difference that occurs because samples differ by chance is known as *sampling error*, and its variability is measured by the standard error of the estimate. There is about a 90-percent chance, or level of confidence, that an estimate based on a sample will differ by no more than 1.6 standard errors from the true population value because of sampling error. BLS analyses are generally conducted at the 90-percent level of confidence.

For example, the confidence interval for the monthly change in total nonfarm employment from the establishment survey is on the order of plus or minus 90,000. Suppose the estimate of nonfarm employment increases by 50,000 from one month to the next. The 90-percent confidence interval on the monthly change would range from -40,000 to +140,000 (50,000 +/- 90,000). These figures do not mean that the sample results are off by these magnitudes, but rather that there is about a 90-percent chance that the true over-the-month change lies within this interval. Since this range includes values of less than zero, we could not say with confidence that nonfarm employment had, in fact, increased that month. If, however, the reported nonfarm employment rise was 250,000, then all of the values within the 90-percent confidence interval would be greater than zero. In this case, it is likely (at least a 90-percent chance) that nonfarm employment had, in fact, risen that month. At an unemployment rate of around 6.0 percent, the 90-percent confidence interval for the monthly change in unemployment as measured by the household survey is about +/- 300,000, and for the monthly change in the unemployment rate it is about +/- 0.2 percentage point.

In general, estimates involving many individuals or establishments have lower standard errors (relative to the size of the estimate) than estimates which are based on a small number of observations. The precision of estimates also is improved when the data are cumulated over time, such as for quarterly and annual averages.

The household and establishment surveys are also affected by *nonsampling error*, which can occur for many reasons, including the failure to sample a segment of the population, inability to obtain information for all respondents in the sample, inability or unwillingness of respondents to provide correct information on a timely basis, mistakes made by respondents, and errors made in the collection or processing of the data.

For example, in the establishment survey, estimates for the most recent 2 months are based on incomplete returns; for this reason, these estimates are labeled preliminary in the tables. It is only after two successive revisions to a monthly estimate, when nearly all sample reports have been received, that the estimate is considered final.

Another major source of nonsampling error in the establishment survey is the inability to capture, on a timely basis, employment generated by new firms. To correct for this systematic underestimation of employment growth, an estimation procedure with two components is used to

account for business births. The first component excludes employment losses from business deaths from sample-based estimation in order to offset the missing employment gains from business births. This is incorporated into the sample-based estimation procedure by simply not reflecting sample units going out of business, but imputing to them the same employment trend as the other firms in the sample. This procedure accounts for most of the net birth/death employment.

The second component is an ARIMA time series model designed to estimate the residual net birth/death employment not accounted for by the imputation. The historical time series used to create and test the ARIMA model was derived from the unemployment insurance universe micro-level database, and reflects the actual residual net of births and deaths over the past 5 years.

The sample-based estimates from the establishment

survey are adjusted once a year (on a lagged basis) to universe counts of payroll employment obtained from administrative records of the unemployment insurance program. The difference between the March sample-based employment estimates and the March universe counts is known as a benchmark revision, and serves as a rough proxy for total survey error. The new benchmarks also incorporate changes in the classification of industries. Over the past decade, absolute benchmark revisions for total nonfarm employment have averaged 0.3 percent, with a range from -0.7 to 0.6 percent.

Other information

Information in this release will be made available to sensory impaired individuals upon request. Voice phone: (202) 691-5200; Federal Relay Service: (800) 877-8339.

HOUSEHOLD DATA

Table A-1. Employment status of the civilian population by sex and age

[Numbers in thousands]

Employment status, sex, and age	Not seasonally adjusted			Seasonally adjusted ¹					
	Dec. 2012	Nov. 2013	Dec. 2013	Dec. 2012	Aug. 2013	Sept. 2013	Oct. 2013	Nov. 2013	Dec. 2013
TOTAL									
Civilian noninstitutional population.....	244,350	246,567	246,745	244,350	245,959	246,168	246,381	246,567	246,745
Civilian labor force.....	154,904	155,046	154,408	155,485	155,435	155,473	154,625	155,284	154,937
Participation rate.....	63.4	62.9	62.6	63.6	63.2	63.2	62.8	63.0	62.8
Employed.....	143,060	144,775	144,423	143,212	144,179	144,270	143,485	144,443	144,586
Employment-population ratio.....	58.5	58.7	58.5	58.6	58.6	58.6	58.2	58.6	58.6
Unemployed.....	11,844	10,271	9,984	12,273	11,256	11,203	11,140	10,841	10,351
Unemployment rate.....	7.6	6.6	6.5	7.9	7.2	7.2	7.2	7.0	6.7
Not in labor force.....	89,445	91,521	92,338	88,865	90,524	90,695	91,756	91,283	91,808
Persons who currently want a job.....	6,532	5,437	5,932	6,725	6,241	6,118	6,100	5,779	6,111
Men, 16 years and over									
Civilian noninstitutional population.....	117,902	119,011	119,103	117,902	118,700	118,807	118,916	119,011	119,103
Civilian labor force.....	82,190	82,397	81,985	82,536	82,499	82,806	82,186	82,554	82,323
Participation rate.....	69.7	69.2	68.8	70.0	69.5	69.7	69.1	69.4	69.1
Employed.....	75,686	76,726	76,403	76,016	76,182	76,464	76,014	76,560	76,723
Employment-population ratio.....	64.2	64.5	64.1	64.5	64.2	64.4	63.9	64.3	64.4
Unemployed.....	6,503	5,671	5,583	6,520	6,317	6,342	6,171	5,993	5,599
Unemployment rate.....	7.9	6.9	6.8	7.9	7.7	7.7	7.5	7.3	6.8
Not in labor force.....	35,712	36,614	37,118	35,366	36,201	36,000	36,730	36,458	36,780
Men, 20 years and over									
Civilian noninstitutional population.....	109,308	110,515	110,613	109,308	110,172	110,292	110,414	110,515	110,613
Civilian labor force.....	79,552	79,743	79,335	79,681	79,610	79,757	79,267	79,700	79,464
Participation rate.....	72.8	72.2	71.7	72.9	72.3	72.3	71.8	72.1	71.8
Employed.....	73,716	74,686	74,275	73,924	74,015	74,151	73,808	74,373	74,467
Employment-population ratio.....	67.4	67.6	67.1	67.6	67.2	67.2	66.8	67.3	67.3
Unemployed.....	5,836	5,058	5,060	5,757	5,595	5,605	5,459	5,328	4,997
Unemployment rate.....	7.3	6.3	6.4	7.2	7.0	7.0	6.9	6.7	6.3
Not in labor force.....	29,756	30,772	31,278	29,627	30,562	30,536	31,147	30,815	31,149
Women, 16 years and over									
Civilian noninstitutional population.....	126,447	127,555	127,642	126,447	127,260	127,361	127,465	127,555	127,642
Civilian labor force.....	72,715	72,649	72,423	72,949	72,937	72,667	72,439	72,730	72,614
Participation rate.....	57.5	57.0	56.7	57.7	57.3	57.1	56.8	57.0	56.9
Employed.....	67,373	68,049	68,021	67,196	67,997	67,806	67,471	67,882	67,862
Employment-population ratio.....	53.3	53.3	53.3	53.1	53.4	53.2	52.9	53.2	53.2
Unemployed.....	5,341	4,600	4,402	5,753	4,939	4,862	4,969	4,848	4,752
Unemployment rate.....	7.3	6.3	6.1	7.9	6.8	6.7	6.9	6.7	6.5
Not in labor force.....	53,733	54,907	55,220	53,498	54,323	54,694	55,026	54,825	55,028
Women, 20 years and over									
Civilian noninstitutional population.....	118,170	119,341	119,433	118,170	119,018	119,131	119,246	119,341	119,433
Civilian labor force.....	69,980	69,912	69,809	70,031	70,115	69,898	69,652	69,871	69,831
Participation rate.....	59.2	58.6	58.5	59.3	58.9	58.7	58.4	58.5	58.5
Employed.....	65,152	65,775	65,849	64,901	65,743	65,539	65,229	65,547	65,617
Employment-population ratio.....	55.1	55.1	55.1	54.9	55.2	55.0	54.7	54.9	54.9
Unemployed.....	4,828	4,137	3,960	5,131	4,372	4,359	4,423	4,323	4,214
Unemployment rate.....	6.9	5.9	5.7	7.3	6.2	6.2	6.4	6.2	6.0
Not in labor force.....	48,190	49,429	49,624	48,138	48,903	49,232	49,593	49,470	49,602
Both sexes, 16 to 19 years									
Civilian noninstitutional population.....	16,871	16,710	16,700	16,871	16,770	16,745	16,721	16,710	16,700
Civilian labor force.....	5,372	5,390	5,264	5,773	5,710	5,818	5,706	5,713	5,642
Participation rate.....	31.8	32.3	31.5	34.2	34.1	34.7	34.1	34.2	33.8
Employed.....	4,192	4,315	4,300	4,387	4,421	4,580	4,448	4,523	4,502
Employment-population ratio.....	24.8	25.8	25.7	26.0	26.4	27.4	26.6	27.1	27.0
Unemployed.....	1,180	1,076	964	1,385	1,289	1,239	1,258	1,190	1,140
Unemployment rate.....	22.0	20.0	18.3	24.0	22.6	21.3	22.0	20.8	20.2
Not in labor force.....	11,499	11,320	11,436	11,099	11,059	10,927	11,015	10,997	11,058

¹ The population figures are not adjusted for seasonal variation; therefore, identical numbers appear in the unadjusted and seasonally adjusted columns.

NOTE: Updated population controls are introduced annually with the release of January data.

HOUSEHOLD DATA

Table A-2. Employment status of the civilian population by race, sex, and age

[Numbers in thousands]

Employment status, race, sex, and age	Not seasonally adjusted			Seasonally adjusted ¹					
	Dec. 2012	Nov. 2013	Dec. 2013	Dec. 2012	Aug. 2013	Sept. 2013	Oct. 2013	Nov. 2013	Dec. 2013
WHITE									
Civilian noninstitutional population.....	193,849	194,833	194,927	193,849	194,489	194,610	194,734	194,833	194,927
Civilian labor force.....	123,404	123,123	122,621	123,741	123,327	123,123	122,621	123,050	122,879
Participation rate.....	63.7	63.2	62.9	63.8	63.4	63.3	63.0	63.2	63.0
Employed.....	115,213	116,056	115,640	115,221	115,463	115,374	114,901	115,514	115,623
Employment-population ratio.....	59.4	59.6	59.3	59.4	59.4	59.3	59.0	59.3	59.3
Unemployed.....	8,191	7,067	6,982	8,520	7,864	7,748	7,719	7,536	7,256
Unemployment rate.....	6.6	5.7	5.7	6.9	6.4	6.3	6.3	6.1	5.9
Not in labor force.....	70,445	71,710	72,306	70,109	71,162	71,487	72,113	71,783	72,048
Men, 20 years and over									
Civilian labor force.....	64,562	64,475	64,190	64,608	64,410	64,307	64,000	64,287	64,221
Participation rate.....	73.2	72.6	72.3	73.3	72.7	72.5	72.1	72.4	72.3
Employed.....	60,415	60,871	60,538	60,546	60,417	60,414	60,107	60,480	60,637
Employment-population ratio.....	68.5	68.6	68.2	68.7	68.2	68.2	67.8	68.1	68.3
Unemployed.....	4,148	3,605	3,652	4,063	3,993	3,893	3,893	3,806	3,584
Unemployment rate.....	6.4	5.6	5.7	6.3	6.2	6.1	6.1	5.9	5.6
Women, 20 years and over									
Civilian labor force.....	54,494	54,298	54,249	54,454	54,456	54,237	54,044	54,181	54,173
Participation rate.....	58.5	58.0	57.9	58.5	58.3	58.0	57.8	57.9	57.8
Employed.....	51,303	51,596	51,589	51,019	51,489	51,258	51,100	51,307	51,308
Employment-population ratio.....	55.1	55.1	55.1	54.8	55.1	54.8	54.6	54.8	54.8
Unemployed.....	3,191	2,702	2,660	3,435	2,968	2,978	2,944	2,874	2,866
Unemployment rate.....	5.9	5.0	4.9	6.3	5.4	5.5	5.4	5.3	5.3
Both sexes, 16 to 19 years									
Civilian labor force.....	4,348	4,350	4,182	4,678	4,461	4,579	4,577	4,582	4,485
Participation rate.....	34.6	35.0	33.6	37.2	35.7	36.7	36.8	36.8	36.1
Employed.....	3,495	3,589	3,513	3,656	3,558	3,702	3,694	3,727	3,678
Employment-population ratio.....	27.8	28.8	28.2	29.1	28.5	29.7	29.7	30.0	29.6
Unemployed.....	853	760	669	1,022	903	877	883	855	806
Unemployment rate.....	19.6	17.5	16.0	21.8	20.3	19.1	19.3	18.7	18.0
BLACK OR AFRICAN AMERICAN									
Civilian noninstitutional population.....	30,093	30,535	30,569	30,093	30,426	30,462	30,500	30,535	30,569
Civilian labor force.....	18,350	18,460	18,315	18,435	18,468	18,675	18,541	18,482	18,401
Participation rate.....	61.0	60.5	59.9	61.3	60.7	61.3	60.8	60.5	60.2
Employed.....	15,832	16,262	16,194	15,848	16,084	16,248	16,133	16,188	16,215
Employment-population ratio.....	52.6	53.3	53.0	52.7	52.9	53.3	52.9	53.0	53.0
Unemployed.....	2,518	2,199	2,121	2,586	2,385	2,428	2,408	2,295	2,186
Unemployment rate.....	13.7	11.9	11.6	14.0	12.9	13.0	13.0	12.4	11.9
Not in labor force.....	11,743	12,075	12,254	11,658	11,957	11,787	11,959	12,053	12,168
Men, 20 years and over									
Civilian labor force.....	8,313	8,362	8,259	8,307	8,306	8,503	8,354	8,334	8,255
Participation rate.....	67.5	66.5	65.6	67.5	66.4	67.9	66.6	66.3	65.6
Employed.....	7,162	7,416	7,305	7,155	7,197	7,305	7,287	7,327	7,302
Employment-population ratio.....	58.2	59.0	58.0	58.1	57.6	58.3	58.1	58.3	58.0
Unemployed.....	1,150	945	954	1,152	1,109	1,199	1,067	1,007	953
Unemployment rate.....	13.8	11.3	11.6	13.9	13.4	14.1	12.8	12.1	11.5
Women, 20 years and over									
Civilian labor force.....	9,438	9,471	9,423	9,470	9,437	9,425	9,496	9,475	9,451
Participation rate.....	62.1	61.4	61.0	62.3	61.4	61.2	61.6	61.4	61.2
Employed.....	8,298	8,443	8,459	8,307	8,436	8,459	8,403	8,428	8,466
Employment-population ratio.....	54.6	54.7	54.7	54.7	54.9	55.0	54.5	54.6	54.8
Unemployed.....	1,140	1,028	964	1,163	1,001	966	1,093	1,047	986
Unemployment rate.....	12.1	10.9	10.2	12.3	10.6	10.2	11.5	11.1	10.4
Both sexes, 16 to 19 years									
Civilian labor force.....	600	628	633	658	726	748	691	673	694
Participation rate.....	23.1	24.8	25.0	25.3	28.4	29.3	27.2	26.5	27.4
Employed.....	371	402	429	386	451	484	442	433	448
Employment-population ratio.....	14.3	15.9	17.0	14.9	17.6	19.0	17.4	17.1	17.7
Unemployed.....	228	225	204	272	275	263	248	240	246
Unemployment rate.....	38.0	35.9	32.2	41.3	37.9	35.2	36.0	35.7	35.5
ASIAN									
Civilian noninstitutional population.....	12,935	13,484	13,493	-	-	-	-	-	-

See footnotes at end of table.

HOUSEHOLD DATA

Table A-2. Employment status of the civilian population by race, sex, and age — Continued

[Numbers in thousands]

Employment status, race, sex, and age	Not seasonally adjusted			Seasonally adjusted ¹					
	Dec. 2012	Nov. 2013	Dec. 2013	Dec. 2012	Aug. 2013	Sept. 2013	Oct. 2013	Nov. 2013	Dec. 2013
Civilian labor force.....	8,501	8,666	8,715	-	-	-	-	-	-
Participation rate.....	65.7	64.3	64.6	-	-	-	-	-	-
Employed.....	7,940	8,209	8,355	-	-	-	-	-	-
Employment-population ratio.....	61.4	60.9	61.9	-	-	-	-	-	-
Unemployed.....	561	457	360	-	-	-	-	-	-
Unemployment rate.....	6.6	5.3	4.1	-	-	-	-	-	-
Not in labor force.....	4,434	4,819	4,778	-	-	-	-	-	-

¹ The population figures are not adjusted for seasonal variation; therefore, identical numbers appear in the unadjusted and seasonally adjusted columns.

- Data not available.

NOTE: Estimates for the above race groups will not sum to totals shown in table A-1 because data are not presented for all races. Updated population controls are introduced annually with the release of January data.

HOUSEHOLD DATA

Table A-3. Employment status of the Hispanic or Latino population by sex and age

[Numbers in thousands]

Employment status, sex, and age	Not seasonally adjusted			Seasonally adjusted ¹					
	Dec. 2012	Nov. 2013	Dec. 2013	Dec. 2012	Aug. 2013	Sept. 2013	Oct. 2013	Nov. 2013	Dec. 2013
HISPANIC OR LATINO ETHNICITY									
Civilian noninstitutional population.....	37,231	37,876	37,955	37,231	37,630	37,713	37,796	37,876	37,955
Civilian labor force.....	24,487	25,060	24,807	24,534	24,918	24,821	24,783	25,124	24,863
Participation rate.....	65.8	66.2	65.4	65.9	66.2	65.8	65.6	66.3	65.5
Employed.....	22,137	22,905	22,741	22,197	22,603	22,601	22,543	22,949	22,805
Employment-population ratio.....	59.5	60.5	59.9	59.6	60.1	59.9	59.6	60.6	60.1
Unemployed.....	2,350	2,154	2,066	2,338	2,315	2,220	2,240	2,175	2,058
Unemployment rate.....	9.6	8.6	8.3	9.5	9.3	8.9	9.0	8.7	8.3
Not in labor force.....	12,744	12,817	13,148	12,697	12,712	12,892	13,013	12,753	13,092
Men, 20 years and over									
Civilian labor force.....	13,500	13,967	13,799	-	-	-	-	-	-
Participation rate.....	80.3	81.6	80.5	-	-	-	-	-	-
Employed.....	12,366	12,896	12,766	-	-	-	-	-	-
Employment-population ratio.....	73.6	75.4	74.4	-	-	-	-	-	-
Unemployed.....	1,134	1,071	1,032	-	-	-	-	-	-
Unemployment rate.....	8.4	7.7	7.5	-	-	-	-	-	-
Women, 20 years and over									
Civilian labor force.....	9,941	10,018	9,978	-	-	-	-	-	-
Participation rate.....	59.3	58.6	58.2	-	-	-	-	-	-
Employed.....	9,004	9,192	9,174	-	-	-	-	-	-
Employment-population ratio.....	53.7	53.7	53.5	-	-	-	-	-	-
Unemployed.....	938	826	804	-	-	-	-	-	-
Unemployment rate.....	9.4	8.2	8.1	-	-	-	-	-	-
Both sexes, 16 to 19 years									
Civilian labor force.....	1,046	1,075	1,030	-	-	-	-	-	-
Participation rate.....	28.6	29.4	28.2	-	-	-	-	-	-
Employed.....	767	817	800	-	-	-	-	-	-
Employment-population ratio.....	21.0	22.4	21.9	-	-	-	-	-	-
Unemployed.....	278	257	230	-	-	-	-	-	-
Unemployment rate.....	26.6	23.9	22.3	-	-	-	-	-	-

¹ The population figures are not adjusted for seasonal variation; therefore, identical numbers appear in the unadjusted and seasonally adjusted columns.

- Data not available.

NOTE: Persons whose ethnicity is identified as Hispanic or Latino may be of any race. Updated population controls are introduced annually with the release of January data.

HOUSEHOLD DATA

Table A-4. Employment status of the civilian population 25 years and over by educational attainment

[Numbers in thousands]

Educational attainment	Not seasonally adjusted			Seasonally adjusted					
	Dec. 2012	Nov. 2013	Dec. 2013	Dec. 2012	Aug. 2013	Sept. 2013	Oct. 2013	Nov. 2013	Dec. 2013
Less than a high school diploma									
Civilian labor force.....	11,156	10,937	10,754	11,127	10,945	10,867	10,721	10,898	10,748
Participation rate.....	45.2	44.6	43.7	45.1	45.4	44.5	44.6	44.5	43.7
Employed.....	9,785	9,784	9,641	9,837	9,712	9,739	9,563	9,741	9,699
Employment-population ratio.....	39.7	39.9	39.2	39.9	40.3	39.9	39.8	39.7	39.4
Unemployed.....	1,371	1,153	1,113	1,290	1,232	1,128	1,158	1,157	1,049
Unemployment rate.....	12.3	10.5	10.4	11.6	11.3	10.4	10.8	10.6	9.8
High school graduates, no college¹									
Civilian labor force.....	36,892	35,960	36,473	36,623	36,607	36,589	36,311	35,895	36,242
Participation rate.....	59.4	58.3	58.4	59.0	59.0	58.9	58.4	58.2	58.0
Employed.....	33,921	33,464	33,894	33,673	33,857	33,834	33,665	33,277	33,677
Employment-population ratio.....	54.6	54.2	54.3	54.2	54.6	54.5	54.2	53.9	53.9
Unemployed.....	2,971	2,496	2,580	2,949	2,750	2,756	2,646	2,618	2,565
Unemployment rate.....	8.1	6.9	7.1	8.1	7.5	7.5	7.3	7.3	7.1
Some college or associate degree									
Civilian labor force.....	37,341	37,406	36,926	37,419	37,409	37,277	37,201	37,244	37,021
Participation rate.....	68.6	67.8	67.4	68.8	67.0	67.1	66.8	67.5	67.6
Employed.....	34,857	35,121	34,730	34,851	35,114	35,007	34,852	34,872	34,750
Employment-population ratio.....	64.1	63.7	63.4	64.1	62.9	63.1	62.6	63.2	63.4
Unemployed.....	2,484	2,285	2,197	2,568	2,295	2,270	2,350	2,372	2,272
Unemployment rate.....	6.7	6.1	5.9	6.9	6.1	6.1	6.3	6.4	6.1
Bachelor's degree and higher²									
Civilian labor force.....	48,758	49,919	49,612	48,900	49,091	49,195	49,329	49,929	49,759
Participation rate.....	75.7	75.2	75.0	75.9	75.4	75.3	75.0	75.2	75.3
Employed.....	46,892	48,302	48,053	46,964	47,394	47,395	47,467	48,246	48,134
Employment-population ratio.....	72.8	72.8	72.7	72.9	72.8	72.6	72.2	72.7	72.8
Unemployed.....	1,866	1,616	1,559	1,936	1,696	1,800	1,863	1,683	1,625
Unemployment rate.....	3.8	3.2	3.1	4.0	3.5	3.7	3.8	3.4	3.3

¹ Includes persons with a high school diploma or equivalent.

² Includes persons with bachelor's, master's, professional, and doctoral degrees.

NOTE: Updated population controls are introduced annually with the release of January data.

HOUSEHOLD DATA

Table A-5. Employment status of the civilian population 18 years and over by veteran status, period of service, and sex, not seasonally adjusted

[Numbers in thousands]

Employment status, veteran status, and period of service	Total		Men		Women	
	Dec. 2012	Dec. 2013	Dec. 2012	Dec. 2013	Dec. 2012	Dec. 2013
VETERANS, 18 years and over						
Civilian noninstitutional population.....	21,062	21,250	19,235	19,015	1,827	2,235
Civilian labor force.....	10,806	10,785	9,699	9,341	1,107	1,443
Participation rate.....	51.3	50.8	50.4	49.1	60.6	64.6
Employed.....	10,050	10,196	9,043	8,793	1,007	1,403
Employment-population ratio.....	47.7	48.0	47.0	46.2	55.1	62.8
Unemployed.....	757	588	656	548	100	41
Unemployment rate.....	7.0	5.5	6.8	5.9	9.1	2.8
Not in labor force.....	10,256	10,465	9,536	9,674	720	792
Gulf War-era II veterans						
Civilian noninstitutional population.....	2,544	2,938	2,128	2,303	416	635
Civilian labor force.....	2,099	2,428	1,805	1,945	294	483
Participation rate.....	82.5	82.6	84.8	84.4	70.8	76.0
Employed.....	1,874	2,250	1,625	1,778	248	472
Employment-population ratio.....	73.7	76.6	76.4	77.2	59.7	74.3
Unemployed.....	226	178	180	166	46	11
Unemployment rate.....	10.8	7.3	9.9	8.6	15.7	2.3
Not in labor force.....	445	511	323	358	122	152
Gulf War-era I veterans						
Civilian noninstitutional population.....	3,044	3,130	2,529	2,562	515	568
Civilian labor force.....	2,534	2,654	2,154	2,245	380	409
Participation rate.....	83.2	84.8	85.2	87.6	73.7	72.0
Employed.....	2,395	2,528	2,043	2,131	352	396
Employment-population ratio.....	78.7	80.7	80.8	83.2	68.3	69.8
Unemployed.....	139	127	111	114	28	13
Unemployment rate.....	5.5	4.8	5.2	5.1	7.3	3.1
Not in labor force.....	510	476	375	317	135	159
World War II, Korean War, and Vietnam-era veterans						
Civilian noninstitutional population.....	9,726	9,656	9,403	9,298	322	358
Civilian labor force.....	2,960	2,691	2,868	2,599	93	92
Participation rate.....	30.4	27.9	30.5	28.0	28.7	25.7
Employed.....	2,776	2,542	2,685	2,455	91	87
Employment-population ratio.....	28.5	26.3	28.6	26.4	28.2	24.2
Unemployed.....	184	149	183	144	1	5
Unemployment rate.....	6.2	5.6	6.4	5.5	1.6	5.9
Not in labor force.....	6,765	6,965	6,535	6,699	230	266
Veterans of other service periods						
Civilian noninstitutional population.....	5,748	5,526	5,175	4,852	574	674
Civilian labor force.....	3,213	3,011	2,872	2,552	341	460
Participation rate.....	55.9	54.5	55.5	52.6	59.4	68.2
Employed.....	3,005	2,877	2,689	2,428	316	448
Employment-population ratio.....	52.3	52.1	52.0	50.1	55.0	66.5
Unemployed.....	208	135	183	123	25	11
Unemployment rate.....	6.5	4.5	6.4	4.8	7.3	2.5
Not in labor force.....	2,536	2,514	2,303	2,300	233	214
NONVETERANS, 18 years and over						
Civilian noninstitutional population.....	214,280	216,600	94,027	95,615	120,253	120,985
Civilian labor force.....	142,344	141,800	71,654	71,750	70,690	70,050
Participation rate.....	66.4	65.5	76.2	75.0	58.8	57.9
Employed.....	131,668	132,788	66,012	66,919	65,656	65,869
Employment-population ratio.....	61.4	61.3	70.2	70.0	54.6	54.4
Unemployed.....	10,676	9,012	5,642	4,831	5,034	4,181
Unemployment rate.....	7.5	6.4	7.9	6.7	7.1	6.0
Not in labor force.....	71,936	74,800	22,374	23,865	49,562	50,935

NOTE: Veterans served on active duty in the U.S. Armed Forces and were not on active duty at the time of the survey. Nonveterans never served on active duty in the U.S. Armed Forces. Veterans could have served anywhere in the world during these periods of service: Gulf War era II (September 2001-present), Gulf War era I (August 1990-August 2001), Vietnam era (August 1964-April 1975), Korean War (July 1950-January 1955), World War II (December 1941-December 1946), and other service periods (all other time periods). Veterans who served in more than one wartime period are classified only in the most recent one. Veterans who served during one of the selected wartime periods and another period are classified only in the wartime period. Beginning with data for January 2013, estimates for veterans incorporate population controls derived from the updated Department of Veterans Affairs' population model.

HOUSEHOLD DATA

Table A-6. Employment status of the civilian population by sex, age, and disability status, not seasonally adjusted

[Numbers in thousands]

Employment status, sex, and age	Persons with a disability		Persons with no disability	
	Dec. 2012	Dec. 2013	Dec. 2012	Dec. 2013
TOTAL, 16 years and over				
Civilian noninstitutional population.....	28,705	28,519	215,645	218,226
Civilian labor force.....	5,893	5,345	149,011	149,062
Participation rate.....	20.5	18.7	69.1	68.3
Employed.....	5,202	4,711	137,858	139,712
Employment-population ratio.....	18.1	16.5	63.9	64.0
Unemployed.....	691	634	11,154	9,350
Unemployment rate.....	11.7	11.9	7.5	6.3
Not in labor force.....	22,812	23,173	66,634	69,164
Men, 16 to 64 years				
Civilian labor force.....	2,683	2,276	75,081	75,198
Participation rate.....	34.2	30.6	82.3	81.7
Employed.....	2,308	1,960	69,228	70,170
Employment-population ratio.....	29.4	26.3	75.9	76.2
Unemployed.....	375	316	5,853	5,028
Unemployment rate.....	14.0	13.9	7.8	6.7
Not in labor force.....	5,164	5,166	16,135	16,898
Women, 16 to 64 years				
Civilian labor force.....	2,190	2,141	67,072	66,638
Participation rate.....	28.6	27.7	70.6	69.9
Employed.....	1,935	1,866	62,176	62,680
Employment-population ratio.....	25.3	24.1	65.5	65.8
Unemployed.....	254	275	4,896	3,958
Unemployment rate.....	11.6	12.9	7.3	5.9
Not in labor force.....	5,463	5,598	27,866	28,676
Both sexes, 65 years and over				
Civilian labor force.....	1,020	928	6,858	7,226
Participation rate.....	7.7	7.0	23.3	23.4
Employed.....	959	885	6,454	6,862
Employment-population ratio.....	7.3	6.6	21.9	22.3
Unemployed.....	61	43	404	364
Unemployment rate.....	6.0	4.7	5.9	5.0
Not in labor force.....	12,185	12,410	22,632	23,590

NOTE: A person with a disability has at least one of the following conditions: is deaf or has serious difficulty hearing; is blind or has serious difficulty seeing even when wearing glasses; has serious difficulty concentrating, remembering, or making decisions because of a physical, mental, or emotional condition; has serious difficulty walking or climbing stairs; has difficulty dressing or bathing; or has difficulty doing errands alone such as visiting a doctor's office or shopping because of a physical, mental, or emotional condition. Updated population controls are introduced annually with the release of January data.

HOUSEHOLD DATA

Table A-7. Employment status of the civilian population by nativity and sex, not seasonally adjusted

[Numbers in thousands]

Employment status and nativity	Total		Men		Women	
	Dec. 2012	Dec. 2013	Dec. 2012	Dec. 2013	Dec. 2012	Dec. 2013
Foreign born, 16 years and over						
Civilian noninstitutional population.....	37,999	38,481	18,386	18,559	19,613	19,922
Civilian labor force.....	25,248	25,429	14,468	14,669	10,780	10,761
Participation rate.....	66.4	66.1	78.7	79.0	55.0	54.0
Employed.....	23,216	23,787	13,386	13,790	9,830	9,997
Employment-population ratio.....	61.1	61.8	72.8	74.3	50.1	50.2
Unemployed.....	2,032	1,642	1,082	879	951	763
Unemployment rate.....	8.0	6.5	7.5	6.0	8.8	7.1
Not in labor force.....	12,751	13,052	3,918	3,891	8,833	9,161
Native born, 16 years and over						
Civilian noninstitutional population.....	206,351	208,264	99,516	100,544	106,835	107,720
Civilian labor force.....	129,656	128,979	67,722	67,317	61,934	61,662
Participation rate.....	62.8	61.9	68.1	67.0	58.0	57.2
Employed.....	119,844	120,636	62,300	62,613	57,544	58,023
Employment-population ratio.....	58.1	57.9	62.6	62.3	53.9	53.9
Unemployed.....	9,812	8,342	5,422	4,704	4,391	3,639
Unemployment rate.....	7.6	6.5	8.0	7.0	7.1	5.9
Not in labor force.....	76,695	79,286	31,795	33,227	44,900	46,058

NOTE: The foreign born are those residing in the United States who were not U.S. citizens at birth. That is, they were born outside the United States or one of its outlying areas such as Puerto Rico or Guam, to parents neither of whom was a U.S. citizen. The native born are persons who were born in the United States or one of its outlying areas such as Puerto Rico or Guam or who were born abroad of at least one parent who was a U.S. citizen. Updated population controls are introduced annually with the release of January data.

HOUSEHOLD DATA

Table A-8. Employed persons by class of worker and part-time status

[In thousands]

Category	Not seasonally adjusted			Seasonally adjusted					
	Dec. 2012	Nov. 2013	Dec. 2013	Dec. 2012	Aug. 2013	Sept. 2013	Oct. 2013	Nov. 2013	Dec. 2013
CLASS OF WORKER									
Agriculture and related industries.....	1,922	2,050	2,075	2,066	2,205	2,208	2,208	2,139	2,229
Wage and salary workers ¹	1,205	1,258	1,301	1,276	1,370	1,399	1,348	1,310	1,377
Self-employed workers, unincorporated.....	683	754	742	747	819	774	796	780	812
Unpaid family workers.....	33	38	32	-	-	-	-	-	-
Nonagricultural industries.....	141,138	142,725	142,348	141,121	141,918	142,058	141,449	142,317	142,337
Wage and salary workers ¹	132,234	134,074	133,911	132,160	133,247	133,323	132,859	133,694	133,858
Government.....	20,839	20,211	20,280	20,643	20,373	20,172	19,706	20,086	20,063
Private industries.....	111,395	113,863	113,631	111,559	112,926	113,138	113,184	113,610	113,818
Private households.....	732	849	837	-	-	-	-	-	-
Other industries.....	110,663	113,014	112,794	110,747	112,252	112,454	112,370	112,760	112,918
Self-employed workers, unincorporated.....	8,819	8,589	8,380	8,953	8,646	8,614	8,528	8,547	8,506
Unpaid family workers.....	85	62	57	-	-	-	-	-	-
PERSONS AT WORK PART TIME²									
 All industries									
Part time for economic reasons ³	8,166	7,563	7,990	7,929	7,898	7,914	8,016	7,723	7,771
Slack work or business conditions.....	5,154	4,793	5,022	4,991	4,788	4,955	5,025	4,869	4,884
Could only find part-time work.....	2,593	2,504	2,579	2,604	2,663	2,548	2,585	2,499	2,592
Part time for noneconomic reasons ⁴	19,308	19,628	19,194	18,825	19,305	18,919	18,755	18,858	18,731
 Nonagricultural industries									
Part time for economic reasons ³	8,038	7,478	7,848	7,823	7,765	7,850	7,921	7,619	7,650
Slack work or business conditions.....	5,087	4,738	4,927	4,936	4,734	4,895	4,967	4,807	4,801
Could only find part-time work.....	2,568	2,494	2,570	2,577	2,676	2,548	2,593	2,484	2,586
Part time for noneconomic reasons ⁴	18,993	19,320	18,836	18,541	18,817	18,627	18,438	18,593	18,436

¹ Includes self-employed workers whose businesses are incorporated.

² Refers to those who worked 1 to 34 hours during the survey reference week and excludes employed persons who were absent from their jobs for the entire week.

³ Refers to those who worked 1 to 34 hours during the reference week for an economic reason such as slack work or unfavorable business conditions, inability to find full-time work, or seasonal declines in demand.

⁴ Refers to persons who usually work part time for noneconomic reasons such as childcare problems, family or personal obligations, school or training, retirement or Social Security limits on earnings, and other reasons. This excludes persons who usually work full time but worked only 1 to 34 hours during the reference week for reasons such as vacations, holidays, illness, and bad weather.

- Data not available.

NOTE: Detail for the seasonally adjusted data shown in this table will not necessarily add to totals because of the independent seasonal adjustment of the various series. Updated population controls are introduced annually with the release of January data.

HOUSEHOLD DATA

Table A-9. Selected employment indicators

[Numbers in thousands]

Characteristic	Not seasonally adjusted			Seasonally adjusted					
	Dec. 2012	Nov. 2013	Dec. 2013	Dec. 2012	Aug. 2013	Sept. 2013	Oct. 2013	Nov. 2013	Dec. 2013
AGE AND SEX									
Total, 16 years and over.....	143,060	144,775	144,423	143,212	144,179	144,270	143,485	144,443	144,586
16 to 19 years.....	4,192	4,315	4,300	4,387	4,421	4,580	4,448	4,523	4,502
16 to 17 years.....	1,342	1,519	1,439	1,425	1,430	1,476	1,512	1,555	1,530
18 to 19 years.....	2,849	2,796	2,860	2,934	3,007	3,102	2,943	2,917	2,943
20 years and over.....	138,868	140,460	140,124	138,825	139,758	139,690	139,037	139,920	140,083
20 to 24 years.....	13,412	13,789	13,806	13,501	13,568	13,689	13,685	13,733	13,875
25 years and over.....	125,456	126,671	126,318	125,426	126,192	126,013	125,519	126,232	126,289
25 to 54 years.....	94,305	94,953	94,708	94,257	94,431	94,492	94,014	94,562	94,660
25 to 34 years.....	31,162	31,652	31,651	31,082	31,173	31,287	31,206	31,430	31,546
35 to 44 years.....	30,523	30,814	30,736	30,518	30,778	30,761	30,579	30,682	30,741
45 to 54 years.....	32,620	32,487	32,321	32,656	32,480	32,443	32,228	32,450	32,372
55 years and over.....	31,151	31,718	31,609	31,170	31,761	31,521	31,505	31,670	31,629
Men, 16 years and over.....	75,686	76,726	76,403	76,016	76,182	76,464	76,014	76,560	76,723
16 to 19 years.....	1,971	2,040	2,128	2,092	2,167	2,313	2,206	2,188	2,257
16 to 17 years.....	632	693	690	683	684	720	737	752	743
18 to 19 years.....	1,339	1,348	1,438	1,386	1,505	1,593	1,477	1,421	1,489
20 years and over.....	73,716	74,686	74,275	73,924	74,015	74,151	73,808	74,373	74,467
20 to 24 years.....	6,969	7,101	7,020	7,061	6,969	7,044	6,998	7,045	7,097
25 years and over.....	66,747	67,585	67,255	66,904	67,123	67,112	66,927	67,345	67,400
25 to 54 years.....	50,286	50,794	50,540	50,381	50,405	50,453	50,252	50,591	50,626
25 to 34 years.....	16,801	17,117	17,021	16,800	16,807	16,904	16,820	16,953	17,007
35 to 44 years.....	16,437	16,635	16,583	16,459	16,573	16,548	16,552	16,563	16,610
45 to 54 years.....	17,048	17,042	16,936	17,122	17,025	17,001	16,879	17,075	17,009
55 years and over.....	16,460	16,790	16,714	16,523	16,718	16,659	16,676	16,755	16,774
Women, 16 years and over.....	67,373	68,049	68,021	67,196	67,997	67,806	67,471	67,882	67,862
16 to 19 years.....	2,221	2,275	2,172	2,295	2,254	2,266	2,242	2,335	2,246
16 to 17 years.....	710	826	749	743	746	756	775	803	787
18 to 19 years.....	1,511	1,448	1,422	1,548	1,502	1,509	1,466	1,497	1,454
20 years and over.....	65,152	65,775	65,849	64,901	65,743	65,539	65,229	65,547	65,617
20 to 24 years.....	6,443	6,688	6,786	6,440	6,599	6,646	6,687	6,688	6,778
25 years and over.....	58,709	59,086	59,063	58,522	59,069	58,901	58,591	58,887	58,888
25 to 54 years.....	44,019	44,159	44,168	43,875	44,026	44,038	43,762	43,971	44,034
25 to 34 years.....	14,361	14,535	14,630	14,282	14,365	14,383	14,386	14,477	14,539
35 to 44 years.....	14,086	14,179	14,153	14,059	14,205	14,214	14,027	14,118	14,131
45 to 54 years.....	15,572	15,445	15,385	15,534	15,456	15,442	15,349	15,376	15,363
55 years and over.....	14,690	14,927	14,895	14,646	15,043	14,862	14,829	14,916	14,855
MARITAL STATUS									
Married men, spouse present.....	44,014	44,480	44,030	43,920	43,973	43,720	43,832	44,162	43,939
Married women, spouse present.....	34,942	34,695	34,807	34,550	34,701	34,523	34,333	34,366	34,404
Women who maintain families.....	9,125	9,184	9,230	-	-	-	-	-	-
FULL- OR PART-TIME STATUS									
Full-time workers ¹	115,079	116,875	116,661	115,735	116,301	116,883	116,306	116,951	117,278
Part-time workers ²	27,980	27,900	27,762	27,560	27,888	27,421	27,211	27,461	27,372
MULTIPLE JOBHOLDERS									
Total multiple jobholders.....	7,081	6,973	6,934	7,032	7,048	7,007	6,948	6,880	6,877
Percent of total employed.....	4.9	4.8	4.8	4.9	4.9	4.9	4.8	4.8	4.8
SELF-EMPLOYMENT									
Self-employed workers, incorporated.....	5,175	5,330	5,433	-	-	-	-	-	-
Self-employed workers, unincorporated.....	9,502	9,343	9,122	9,700	9,466	9,388	9,323	9,327	9,317

¹ Employed full-time workers are persons who usually work 35 hours or more per week.

² Employed part-time workers are persons who usually work less than 35 hours per week.

- Data not available.

NOTE: Detail for the seasonally adjusted data shown in this table will not necessarily add to totals because of the independent seasonal adjustment of the various series. Updated population controls are introduced annually with the release of January data.

HOUSEHOLD DATA

Table A-10. Selected unemployment indicators, seasonally adjusted

Characteristic	Number of unemployed persons (in thousands)			Unemployment rates					
	Dec. 2012	Nov. 2013	Dec. 2013	Dec. 2012	Aug. 2013	Sept. 2013	Oct. 2013	Nov. 2013	Dec. 2013
AGE AND SEX									
Total, 16 years and over.....	12,273	10,841	10,351	7.9	7.2	7.2	7.2	7.0	6.7
16 to 19 years.....	1,385	1,190	1,140	24.0	22.6	21.3	22.0	20.8	20.2
16 to 17 years.....	511	479	478	26.4	26.0	25.4	23.8	23.6	23.8
18 to 19 years.....	869	701	658	22.9	21.5	19.6	21.1	19.4	18.3
20 years and over.....	10,888	9,651	9,212	7.3	6.7	6.7	6.6	6.5	6.2
20 to 24 years.....	2,178	1,808	1,733	13.9	12.8	12.8	12.2	11.6	11.1
25 years and over.....	8,718	7,840	7,469	6.5	6.0	5.9	6.0	5.8	5.6
25 to 54 years.....	6,793	6,198	5,795	6.7	6.3	6.1	6.3	6.2	5.8
25 to 34 years.....	2,601	2,507	2,326	7.7	7.8	7.3	7.2	7.4	6.9
35 to 44 years.....	2,162	1,833	1,741	6.6	5.6	5.6	5.7	5.6	5.4
45 to 54 years.....	2,030	1,858	1,728	5.9	5.5	5.5	5.9	5.4	5.1
55 years and over.....	1,947	1,619	1,700	5.9	5.1	5.3	5.4	4.9	5.1
Men, 16 years and over.....	6,520	5,993	5,599	7.9	7.7	7.7	7.5	7.3	6.8
16 to 19 years.....	763	666	602	26.7	25.0	24.1	24.4	23.3	21.1
16 to 17 years.....	241	247	242	26.1	26.5	28.0	23.3	24.7	24.6
18 to 19 years.....	506	416	348	26.8	25.1	22.6	25.3	22.7	18.9
20 years and over.....	5,757	5,328	4,997	7.2	7.0	7.0	6.9	6.7	6.3
20 to 24 years.....	1,137	991	945	13.9	14.2	14.7	13.7	12.3	11.8
25 years and over.....	4,612	4,337	4,050	6.4	6.3	6.2	6.2	6.1	5.7
25 to 54 years.....	3,523	3,411	3,111	6.5	6.5	6.4	6.4	6.3	5.8
25 to 34 years.....	1,400	1,371	1,288	7.7	8.4	7.7	7.5	7.5	7.0
35 to 44 years.....	1,077	1,027	931	6.1	5.6	5.7	5.7	5.8	5.3
45 to 54 years.....	1,045	1,012	893	5.8	5.6	5.7	6.0	5.6	5.0
55 years and over.....	1,089	927	938	6.2	5.4	5.5	5.6	5.2	5.3
Women, 16 years and over.....	5,753	4,848	4,752	7.9	6.8	6.7	6.9	6.7	6.5
16 to 19 years.....	622	525	538	21.3	20.1	18.1	19.6	18.3	19.3
16 to 17 years.....	270	233	235	26.6	25.5	22.8	24.2	22.5	23.0
18 to 19 years.....	363	285	310	19.0	17.6	16.2	16.4	16.0	17.6
20 years and over.....	5,131	4,323	4,214	7.3	6.2	6.2	6.4	6.2	6.0
20 to 24 years.....	1,041	817	787	13.9	11.3	10.7	10.7	10.9	10.4
25 years and over.....	4,106	3,503	3,420	6.6	5.7	5.6	5.9	5.6	5.5
25 to 54 years.....	3,270	2,787	2,684	6.9	6.0	5.9	6.1	6.0	5.7
25 to 34 years.....	1,201	1,136	1,038	7.8	7.0	6.9	6.9	7.3	6.7
35 to 44 years.....	1,085	806	810	7.2	5.7	5.5	5.8	5.4	5.4
45 to 54 years.....	984	846	835	6.0	5.3	5.3	5.7	5.2	5.2
55 years and over ¹	794	661	709	5.1	5.2	5.1	5.1	4.2	4.5
MARITAL STATUS									
Married men, spouse present.....	2,139	1,916	1,744	4.6	4.3	4.3	4.5	4.2	3.8
Married women, spouse present.....	1,891	1,605	1,602	5.2	4.2	4.4	4.7	4.5	4.5
Women who maintain families ¹	1,166	982	884	11.3	11.0	8.8	9.5	9.7	8.7
FULL- OR PART-TIME STATUS									
Full-time workers ²	10,412	9,176	8,566	8.3	7.6	7.5	7.6	7.3	6.8
Part-time workers ³	1,794	1,631	1,722	6.1	5.7	5.8	5.5	5.6	5.9

¹ Not seasonally adjusted.

² Full-time workers are unemployed persons who have expressed a desire to work full time (35 hours or more per week) or are on layoff from full-time jobs.

³ Part-time workers are unemployed persons who have expressed a desire to work part time (less than 35 hours per week) or are on layoff from part-time jobs.

NOTE: Detail for the seasonally adjusted data shown in this table will not necessarily add to totals because of the independent seasonal adjustment of the various series. Updated population controls are introduced annually with the release of January data.

HOUSEHOLD DATA

Table A-11. Unemployed persons by reason for unemployment

[Numbers in thousands]

Reason	Not seasonally adjusted			Seasonally adjusted					
	Dec. 2012	Nov. 2013	Dec. 2013	Dec. 2012	Aug. 2013	Sept. 2013	Oct. 2013	Nov. 2013	Dec. 2013
NUMBER OF UNEMPLOYED									
Job losers and persons who completed temporary jobs.....	6,592	5,400	5,460	6,475	5,887	5,803	6,162	5,731	5,366
On temporary layoff.....	1,244	912	1,109	1,110	1,059	1,091	1,507	1,128	997
Not on temporary layoff.....	5,348	4,488	4,351	5,365	4,828	4,712	4,655	4,603	4,369
Permanent job losers.....	4,070	3,329	3,192	4,099	3,638	3,531	3,496	3,428	3,219
Persons who completed temporary jobs....	1,278	1,160	1,159	1,266	1,190	1,181	1,159	1,174	1,150
Job leavers.....	933	874	802	1,000	890	984	842	890	862
Reentrants.....	3,228	2,935	2,715	3,615	3,116	3,165	3,104	3,065	3,036
New entrants.....	1,092	1,062	1,007	1,296	1,295	1,211	1,217	1,169	1,201
PERCENT DISTRIBUTION									
Job losers and persons who completed temporary jobs.....	55.7	52.6	54.7	52.3	52.6	52.0	54.4	52.8	51.3
On temporary layoff.....	10.5	8.9	11.1	9.0	9.5	9.8	13.3	10.4	9.5
Not on temporary layoff.....	45.2	43.7	43.6	43.3	43.2	42.2	41.1	42.4	41.8
Job leavers.....	7.9	8.5	8.0	8.1	8.0	8.8	7.4	8.2	8.2
Reentrants.....	27.3	28.6	27.2	29.2	27.9	28.4	27.4	28.2	29.0
New entrants.....	9.2	10.3	10.1	10.5	11.6	10.9	10.7	10.8	11.5
UNEMPLOYED AS A PERCENT OF THE CIVILIAN LABOR FORCE									
Job losers and persons who completed temporary jobs.....	4.3	3.5	3.5	4.2	3.8	3.7	4.0	3.7	3.5
Job leavers.....	0.6	0.6	0.5	0.6	0.6	0.6	0.5	0.6	0.6
Reentrants.....	2.1	1.9	1.8	2.3	2.0	2.0	2.0	2.0	2.0
New entrants.....	0.7	0.7	0.7	0.8	0.8	0.8	0.8	0.8	0.8

NOTE: Updated population controls are introduced annually with the release of January data.

HOUSEHOLD DATA

Table A-12. Unemployed persons by duration of unemployment

[Numbers in thousands]

Duration	Not seasonally adjusted			Seasonally adjusted					
	Dec. 2012	Nov. 2013	Dec. 2013	Dec. 2012	Aug. 2013	Sept. 2013	Oct. 2013	Nov. 2013	Dec. 2013
NUMBER OF UNEMPLOYED									
Less than 5 weeks.....	2,678	2,155	2,236	2,688	2,527	2,571	2,794	2,439	2,255
5 to 14 weeks.....	2,732	2,449	2,376	2,876	2,738	2,685	2,636	2,585	2,506
15 weeks and over.....	6,435	5,666	5,372	6,634	5,973	5,927	5,824	5,786	5,530
15 to 26 weeks.....	1,817	1,677	1,619	1,862	1,704	1,802	1,777	1,742	1,651
27 weeks and over.....	4,618	3,989	3,753	4,772	4,269	4,125	4,047	4,044	3,878
Average (mean) duration, in weeks.....	37.0	37.9	36.2	38.0	37.0	36.8	36.0	37.1	37.1
Median duration, in weeks.....	18.1	18.0	17.5	17.8	16.5	16.4	16.5	17.0	17.1
PERCENT DISTRIBUTION									
Less than 5 weeks.....	22.6	21.0	22.4	22.0	22.5	23.0	24.8	22.6	21.9
5 to 14 weeks.....	23.1	23.8	23.8	23.6	24.4	24.0	23.4	23.9	24.4
15 weeks and over.....	54.3	55.2	53.8	54.4	53.2	53.0	51.7	53.5	53.7
15 to 26 weeks.....	15.3	16.3	16.2	15.3	15.2	16.1	15.8	16.1	16.0
27 weeks and over.....	39.0	38.8	37.6	39.1	38.0	36.9	36.0	37.4	37.7

NOTE: Updated population controls are introduced annually with the release of January data.

HOUSEHOLD DATA

Table A-13. Employed and unemployed persons by occupation, not seasonally adjusted

[Numbers in thousands]

Occupation	Employed		Unemployed		Unemployment rates	
	Dec. 2012	Dec. 2013	Dec. 2012	Dec. 2013	Dec. 2012	Dec. 2013
Total, 16 years and over ¹	143,060	144,423	11,844	9,984	7.6	6.5
Management, professional, and related occupations.....	54,635	54,880	2,221	1,637	3.9	2.9
Management, business, and financial operations occupations.....	22,757	22,754	963	729	4.1	3.1
Professional and related occupations.....	31,877	32,126	1,258	908	3.8	2.7
Service occupations.....	25,075	25,704	2,465	2,127	9.0	7.6
Sales and office occupations.....	33,497	33,631	2,515	2,279	7.0	6.3
Sales and related occupations.....	15,396	15,450	1,161	1,043	7.0	6.3
Office and administrative support occupations.....	18,101	18,181	1,354	1,237	7.0	6.4
Natural resources, construction, and maintenance occupations.....	12,811	12,988	1,722	1,369	11.8	9.5
Farming, fishing, and forestry occupations.....	863	868	194	135	18.3	13.4
Construction and extraction occupations.....	7,069	7,094	1,194	973	14.4	12.1
Installation, maintenance, and repair occupations.....	4,879	5,026	334	262	6.4	5.0
Production, transportation, and material moving occupations.....	17,042	17,220	1,788	1,512	9.5	8.1
Production occupations.....	8,357	8,471	846	707	9.2	7.7
Transportation and material moving occupations.....	8,685	8,749	943	804	9.8	8.4

¹ Persons with no previous work experience and persons whose last job was in the U.S. Armed Forces are included in the unemployed total.

NOTE: Updated population controls are introduced annually with the release of January data.

HOUSEHOLD DATA

Table A-14. Unemployed persons by industry and class of worker, not seasonally adjusted

Industry and class of worker	Number of unemployed persons (in thousands)		Unemployment rates	
	Dec. 2012	Dec. 2013	Dec. 2012	Dec. 2013
Total, 16 years and over ¹	11,844	9,984	7.6	6.5
Nonagricultural private wage and salary workers.....	9,104	7,662	7.6	6.3
Mining, quarrying, and oil and gas extraction.....	58	38	6.3	3.6
Construction.....	1,105	958	13.5	11.4
Manufacturing.....	1,145	854	7.5	5.5
Durable goods.....	706	571	7.3	5.8
Nondurable goods.....	439	283	7.7	5.0
Wholesale and retail trade.....	1,430	1,253	7.0	6.2
Transportation and utilities.....	369	379	6.1	6.2
Information.....	229	133	8.0	4.8
Financial activities.....	386	394	4.1	4.2
Professional and business services.....	1,307	1,139	8.7	7.3
Education and health services.....	1,177	897	5.2	4.0
Leisure and hospitality.....	1,426	1,194	10.8	9.0
Other services.....	472	423	7.1	6.6
Agriculture and related private wage and salary workers.....	209	170	15.1	12.0
Government workers.....	874	627	4.0	3.0
Self-employed workers, unincorporated, and unpaid family workers.....	566	518	5.6	5.3

¹ Persons with no previous work experience and persons whose last job was in the U.S. Armed Forces are included in the unemployed total.

NOTE: Updated population controls are introduced annually with the release of January data.

HOUSEHOLD DATA

Table A-15. Alternative measures of labor underutilization

[Percent]

Measure	Not seasonally adjusted			Seasonally adjusted					
	Dec. 2012	Nov. 2013	Dec. 2013	Dec. 2012	Aug. 2013	Sept. 2013	Oct. 2013	Nov. 2013	Dec. 2013
U-1 Persons unemployed 15 weeks or longer, as a percent of the civilian labor force.....	4.2	3.7	3.5	4.3	3.8	3.8	3.8	3.7	3.6
U-2 Job losers and persons who completed temporary jobs, as a percent of the civilian labor force.....	4.3	3.5	3.5	4.2	3.8	3.7	4.0	3.7	3.5
U-3 Total unemployed, as a percent of the civilian labor force (official unemployment rate).....	7.6	6.6	6.5	7.9	7.2	7.2	7.2	7.0	6.7
U-4 Total unemployed plus discouraged workers, as a percent of the civilian labor force plus discouraged workers.....	8.3	7.1	7.0	8.5	7.8	7.7	7.7	7.4	7.2
U-5 Total unemployed, plus discouraged workers, plus all other persons marginally attached to the labor force, as a percent of the civilian labor force plus all persons marginally attached to the labor force.....	9.2	7.9	7.9	9.4	8.6	8.6	8.6	8.2	8.1
U-6 Total unemployed, plus all persons marginally attached to the labor force, plus total employed part time for economic reasons, as a percent of the civilian labor force plus all persons marginally attached to the labor force.....	14.4	12.7	13.0	14.4	13.6	13.6	13.7	13.1	13.1

NOTE: Persons marginally attached to the labor force are those who currently are neither working nor looking for work but indicate that they want and are available for a job and have looked for work sometime in the past 12 months. Discouraged workers, a subset of the marginally attached, have given a job-market related reason for not currently looking for work. Persons employed part time for economic reasons are those who want and are available for full-time work but have had to settle for a part-time schedule. Updated population controls are introduced annually with the release of January data.

HOUSEHOLD DATA

Table A-16. Persons not in the labor force and multiple jobholders by sex, not seasonally adjusted

[Numbers in thousands]

Category	Total		Men		Women	
	Dec. 2012	Dec. 2013	Dec. 2012	Dec. 2013	Dec. 2012	Dec. 2013
NOT IN THE LABOR FORCE						
Total not in the labor force.....	89,445	92,338	35,712	37,118	53,733	55,220
Persons who currently want a job.....	6,532	5,932	3,064	2,781	3,467	3,151
Marginally attached to the labor force ¹	2,614	2,427	1,303	1,236	1,311	1,191
Discouraged workers ²	1,068	917	636	524	433	394
Other persons marginally attached to the labor force ³ ..	1,545	1,510	667	712	878	798
MULTIPLE JOBHOLDERS						
Total multiple jobholders ⁴	7,081	6,934	3,485	3,254	3,597	3,679
Percent of total employed.....	4.9	4.8	4.6	4.3	5.3	5.4
Primary job full time, secondary job part time.....	3,591	3,550	1,976	1,824	1,615	1,726
Primary and secondary jobs both part time.....	2,118	1,969	729	662	1,390	1,308
Primary and secondary jobs both full time.....	228	273	137	183	91	90
Hours vary on primary or secondary job.....	1,088	1,091	608	567	481	524

¹ Data refer to persons who want a job, have searched for work during the prior 12 months, and were available to take a job during the reference week, but had not looked for work in the past 4 weeks.

² Includes those who did not actively look for work in the prior 4 weeks for reasons such as thinks no work available, could not find work, lacks schooling or training, employer thinks too young or old, and other types of discrimination.

³ Includes those who did not actively look for work in the prior 4 weeks for such reasons as school or family responsibilities, ill health, and transportation problems, as well as a number for whom reason for nonparticipation was not determined.

⁴ Includes a small number of persons who work part time on their primary job and full time on their secondary job(s), not shown separately.

NOTE: Updated population controls are introduced annually with the release of January data.

ESTABLISHMENT DATA

Table B-1. Employees on nonfarm payrolls by industry sector and selected industry detail

[In thousands]

Industry	Not seasonally adjusted				Seasonally adjusted				Change from: Nov.2013 - Dec.2013 ^P
	Dec. 2012	Oct. 2013	Nov. 2013 ^P	Dec. 2013 ^P	Dec. 2012	Oct. 2013	Nov. 2013 ^P	Dec. 2013 ^P	
Total nonfarm.....	135,560	137,523	137,999	137,753	134,691	136,562	136,803	136,877	74
Total private.....	113,321	115,314	115,662	115,542	112,817	114,715	114,941	115,028	87
Goods-producing.....	18,416	18,971	18,871	18,659	18,522	18,704	18,755	18,752	-3
Mining and logging.....	855	895	886	886	860	886	887	891	4
Logging.....	50.8	54.3	55.5	52.7	50.6	51.9	53.9	52.3	-1.6
Mining.....	804.0	840.9	830.9	833.6	809.2	834.3	833.1	838.2	5.1
Oil and gas extraction.....	190.9	198.2	198.9	201.5	191.7	199.1	200.1	201.9	1.8
Mining, except oil and gas ¹	219.8	226.0	223.3	219.5	224.3	222.8	223.5	223.3	-0.2
Coal mining.....	83.4	85.6	84.9	85.6	83.8	86.0	85.9	85.9	0.0
Support activities for mining.....	393.3	416.7	408.7	412.6	393.2	412.4	409.5	413.0	3.5
Construction.....	5,622	6,052	5,961	5,745	5,711	5,830	5,849	5,833	-16
Construction of buildings.....	1,248.3	1,316.2	1,301.8	1,287.1	1,249.6	1,279.8	1,282.8	1,286.4	3.6
Residential building.....	575.5	611.3	605.3	603.1	574.4	594.9	596.4	601.2	4.8
Nonresidential building.....	672.8	704.9	696.5	684.0	675.2	684.9	686.4	685.2	-1.2
Heavy and civil engineering construction.....	847.2	960.8	926.7	849.4	884.6	894.0	893.9	885.1	-8.8
Specialty trade contractors.....	3,526.2	3,774.5	3,732.0	3,608.8	3,576.5	3,656.0	3,672.6	3,661.1	-11.5
Residential specialty trade contractors.....	1,472.4	1,615.5	1,597.6	1,543.5	1,502.6	1,562.3	1,574.2	1,575.6	1.4
Nonresidential specialty trade contractors.....	2,053.8	2,159.0	2,134.4	2,065.3	2,073.9	2,093.7	2,098.4	2,085.5	-12.9
Manufacturing.....	11,939	12,024	12,024	12,028	11,951	11,988	12,019	12,028	9
Durable goods.....	7,490	7,548	7,564	7,574	7,494	7,543	7,564	7,570	6
Wood products.....	342.0	354.8	353.6	352.9	343.9	353.0	353.1	353.0	-0.1
Nonmetallic mineral products.....	360.5	376.8	376.6	368.0	365.6	371.1	373.6	372.1	-1.5
Primary metals.....	397.3	392.2	393.4	397.1	398.3	392.4	394.8	398.3	3.5
Fabricated metal products.....	1,421.9	1,449.1	1,452.1	1,455.9	1,424.0	1,446.8	1,451.5	1,456.5	5.0
Machinery.....	1,103.0	1,104.0	1,104.4	1,109.2	1,100.9	1,105.4	1,106.6	1,106.9	0.3
Computer and electronic products ¹	1,088.3	1,078.3	1,077.1	1,078.8	1,086.7	1,079.3	1,080.1	1,077.7	-2.4
Computer and peripheral equipment.....	158.8	163.5	164.2	165.1	158.4	163.9	164.7	165.0	0.3
Communications equipment.....	108.8	104.5	103.9	104.3	108.3	104.8	104.1	104.0	-0.1
Semiconductors and electronic components.....	382.9	377.2	378.0	381.3	382.5	377.8	379.6	381.0	1.4
Electronic instruments.....	397.4	394.5	392.7	390.5	397.4	394.4	393.8	390.3	-3.5
Electrical equipment and appliances.....	369.5	364.5	364.7	366.3	368.3	364.7	365.1	365.3	0.2
Transportation equipment ¹	1,478.4	1,494.5	1,503.7	1,511.1	1,474.9	1,497.3	1,502.8	1,506.6	3.8
Motor vehicles and parts ²	788.6	819.6	826.1	827.8	786.0	819.2	824.8	825.8	1.0
Furniture and related products.....	348.3	356.1	356.6	355.2	350.8	356.0	358.3	357.1	-1.2
Miscellaneous durable goods manufacturing.....	581.1	578.1	581.7	579.2	580.1	577.0	577.6	576.9	-0.7
Nondurable goods.....	4,449	4,476	4,460	4,454	4,457	4,445	4,455	4,458	3
Food manufacturing.....	1,463.1	1,491.1	1,481.1	1,480.5	1,465.6	1,466.9	1,475.5	1,480.8	5.3
Textile mills.....	115.3	115.0	114.6	115.0	115.7	115.1	114.5	115.5	1.0
Textile product mills.....	117.8	113.9	114.3	112.9	117.5	113.4	113.4	112.4	-1.0
Apparel.....	147.3	140.7	140.9	140.0	148.1	140.5	140.3	139.9	-0.4
Paper and paper products.....	377.5	373.8	374.1	375.5	377.2	374.3	374.8	375.1	0.3
Printing and related support activities.....	458.2	445.1	445.2	442.5	457.3	443.9	443.3	441.1	-2.2
Petroleum and coal products.....	113.1	116.7	115.7	115.5	115.0	114.1	115.5	117.1	1.6
Chemicals.....	787.1	791.3	792.9	793.4	787.1	793.2	795.1	793.3	-1.8
Plastics and rubber products.....	648.6	655.5	656.5	658.1	649.6	656.6	658.3	659.9	1.6
Miscellaneous nondurable goods manufacturing.....	220.6	233.1	225.0	220.2	223.4	227.1	224.3	222.8	-1.5
Private service-providing.....	94,905	96,343	96,791	96,883	94,295	96,011	96,186	96,276	90
Trade, transportation, and utilities.....	26,425	26,187	26,728	26,992	25,769	26,150	26,217	26,286	69
Wholesale trade.....	5,723.6	5,795.8	5,804.0	5,821.1	5,715.3	5,785.1	5,794.9	5,810.3	15.4
Durable goods.....	2,849.3	2,881.3	2,881.7	2,888.9	2,847.7	2,879.1	2,882.1	2,886.0	3.9
Nondurable goods.....	1,994.7	2,014.6	2,019.5	2,018.1	1,990.4	2,006.9	2,010.5	2,012.8	2.3
Electronic markets and agents and brokers.....	879.6	899.9	902.8	914.1	877.2	899.1	902.3	911.5	9.2
Retail trade.....	15,538.3	15,303.3	15,768.7	15,945.2	15,004.1	15,307.7	15,329.6	15,384.9	55.3
Motor vehicle and parts dealers ¹	1,736.2	1,796.1	1,798.3	1,796.2	1,747.4	1,790.5	1,799.9	1,807.2	7.3
Automobile dealers.....	1,098.5	1,135.3	1,138.0	1,138.4	1,103.2	1,132.2	1,138.6	1,143.9	5.3

See footnotes at end of table.

ESTABLISHMENT DATA

Table B-1. Employees on nonfarm payrolls by industry sector and selected industry detail

— Continued

[In thousands]

Industry	Not seasonally adjusted				Seasonally adjusted				Change from: Nov.2013 - Dec.2013 ^P
	Dec. 2012	Oct. 2013	Nov. 2013 ^P	Dec. 2013 ^P	Dec. 2012	Oct. 2013	Nov. 2013 ^P	Dec. 2013 ^P	
Retail trade - Continued									
Furniture and home furnishings stores.	470.8	456.9	473.3	483.4	446.5	453.1	454.7	458.2	3.5
Electronics and appliance stores.	538.4	531.0	559.3	560.6	513.3	529.1	527.0	530.2	3.2
Building material and garden supply stores.	1,138.6	1,189.8	1,185.4	1,177.5	1,177.1	1,209.7	1,212.5	1,213.7	1.2
Food and beverage stores.	2,913.0	2,961.4	2,976.9	2,991.3	2,887.1	2,956.5	2,951.5	2,963.3	11.8
Health and personal care stores.	1,036.1	1,040.5	1,049.6	1,060.5	1,017.7	1,041.2	1,036.6	1,041.5	4.9
Gasoline stations.	844.8	869.5	869.5	863.1	846.3	867.9	866.3	865.1	-1.2
Clothing and clothing accessories stores.	1,620.1	1,427.7	1,562.9	1,614.5	1,454.1	1,433.7	1,434.1	1,445.7	11.6
Sporting goods, hobby, book, and music stores.	619.7	596.0	651.5	665.9	576.4	598.9	608.4	613.6	5.2
General merchandise stores ¹	3,314.8	3,147.6	3,338.6	3,419.9	3,088.5	3,166.3	3,180.8	3,188.4	7.6
Department stores.	1,638.8	1,479.8	1,614.4	1,674.9	1,475.4	1,499.9	1,505.7	1,508.8	3.1
Miscellaneous store retailers.	826.4	818.6	820.4	823.6	807.4	806.6	806.6	806.0	-0.6
Nonstore retailers.	479.4	468.2	483.0	488.7	442.3	454.2	451.2	452.0	0.8
Transportation and warehousing.	4,609.2	4,533.2	4,600.3	4,672.6	4,493.8	4,501.7	4,536.6	4,536.0	-0.6
Air transportation.	449.6	444.6	445.8	450.4	450.8	446.4	449.6	451.6	2.0
Rail transportation.	230.0	229.8	229.8	229.8	230.4	229.9	229.9	230.4	0.5
Water transportation.	62.1	63.2	62.8	62.9	62.7	62.6	63.4	63.4	0.0
Truck transportation.	1,368.4	1,403.5	1,405.8	1,394.4	1,370.8	1,387.2	1,395.5	1,395.6	0.1
Transit and ground passenger transportation.	478.6	490.4	494.5	496.2	462.1	472.5	477.0	478.3	1.3
Pipeline transportation.	44.4	45.4	45.4	45.5	44.2	45.4	45.6	45.4	-0.2
Scenic and sightseeing transportation.	22.8	26.0	22.2	21.4	27.2	25.4	25.1	25.7	0.6
Support activities for transportation.	592.8	593.6	593.5	597.1	589.1	591.0	591.6	592.4	0.8
Couriers and messengers.	648.7	526.7	579.4	651.8	560.3	540.9	554.4	548.0	-6.4
Warehousing and storage.	711.8	710.0	721.1	723.1	696.2	700.4	704.5	705.2	0.7
Utilities.	554.1	555.0	554.5	553.0	555.3	555.5	556.3	554.6	-1.7
Information.	2,685	2,672	2,697	2,673	2,676	2,683	2,684	2,672	-12
Publishing industries, except Internet.	733.9	727.6	729.1	730.6	729.9	725.8	726.7	727.0	0.3
Motion picture and sound recording industries.	377.3	355.4	378.5	347.6	379.3	368.1	370.4	356.7	-13.7
Broadcasting, except Internet.	287.1	288.8	288.8	287.7	285.8	287.9	287.2	286.0	-1.2
Telecommunications.	854.2	858.8	858.4	863.0	851.1	859.9	858.7	860.4	1.7
Data processing, hosting and related services.	252.9	254.3	254.7	256.4	251.6	254.7	254.5	255.0	0.5
Other information services.	179.8	187.5	187.1	187.6	178.5	186.9	186.8	186.4	-0.4
Financial activities.	7,846	7,912	7,908	7,925	7,831	7,910	7,911	7,915	4
Finance and insurance.	5,888.5	5,904.9	5,909.1	5,921.4	5,869.9	5,907.3	5,903.7	5,907.4	3.7
Monetary authorities - central bank.	17.4	16.9	17.3	16.9	17.3	16.7	17.0	16.7	-0.3
Credit intermediation and related activities ¹	2,610.5	2,591.4	2,587.4	2,589.4	2,601.9	2,595.1	2,587.1	2,584.9	-2.2
Depository credit intermediation ¹	1,742.6	1,718.0	1,716.3	1,715.2	1,739.1	1,721.5	1,718.4	1,713.7	-4.7
Commercial banking.	1,316.5	1,288.2	1,285.1	1,282.4	1,314.7	1,290.0	1,287.0	1,281.8	-5.2
Securities, commodity contracts, investments.	819.9	834.3	833.4	835.8	818.0	833.5	831.9	835.0	3.1
Insurance carriers and related activities.	2,353.3	2,375.6	2,384.2	2,391.8	2,346.1	2,375.2	2,381.0	2,384.1	3.1
Funds, trusts, and other financial vehicles.	87.4	86.7	86.8	87.5	86.6	86.8	86.7	86.7	0.0
Real estate and rental and leasing.	1,957.4	2,007.3	1,999.0	2,003.8	1,961.2	2,002.4	2,006.8	2,007.3	0.5
Real estate.	1,426.5	1,458.7	1,452.9	1,457.4	1,423.0	1,454.6	1,456.1	1,454.4	-1.7
Rental and leasing services.	506.9	526.1	523.5	523.6	514.6	525.3	528.3	530.5	2.2
Lessors of nonfinancial intangible assets.	24.0	22.5	22.6	22.8	23.6	22.5	22.4	22.4	0.0
Professional and business services.	18,237	18,898	18,902	18,858	18,152	18,729	18,770	18,789	19
Professional and technical services ¹	8,040.5	8,143.6	8,177.3	8,216.3	7,995.8	8,171.6	8,191.1	8,179.4	-11.7
Legal services.	1,131.9	1,131.2	1,129.8	1,130.6	1,128.0	1,129.3	1,127.8	1,127.0	-0.8
Accounting and bookkeeping services.	924.1	880.6	903.2	930.5	914.5	946.8	951.9	927.2	-24.7
Architectural and engineering services.	1,336.3	1,372.8	1,370.3	1,374.1	1,336.0	1,365.7	1,368.8	1,374.1	5.3
Computer systems design and related services.	1,664.1	1,713.0	1,719.4	1,717.1	1,658.5	1,706.8	1,711.4	1,712.8	1.4
Management and technical consulting services.	1,158.9	1,211.0	1,211.0	1,217.6	1,145.4	1,200.5	1,200.9	1,204.8	3.9

See footnotes at end of table.

ESTABLISHMENT DATA

Table B-1. Employees on nonfarm payrolls by industry sector and selected industry detail

— Continued

[In thousands]

Industry	Not seasonally adjusted				Seasonally adjusted				Change from: Nov.2013 - Dec.2013 ^P
	Dec. 2012	Oct. 2013	Nov. 2013 ^P	Dec. 2013 ^P	Dec. 2012	Oct. 2013	Nov. 2013 ^P	Dec. 2013 ^P	
Professional and business services - Continued									
Management of companies and enterprises. . .	2,028.9	2,055.8	2,059.9	2,063.1	2,020.9	2,055.3	2,057.6	2,058.3	0.7
Administrative and waste services.	8,167.5	8,698.3	8,664.4	8,578.8	8,135.2	8,502.5	8,520.8	8,551.1	30.3
Administrative and support services ¹	7,794.3	8,318.4	8,286.5	8,204.4	7,759.3	8,124.6	8,142.4	8,173.4	31.0
Employment services ¹	3,304.9	3,570.6	3,573.3	3,588.5	3,213.6	3,452.0	3,465.2	3,499.3	34.1
Temporary help services.	2,651.2	2,867.9	2,871.8	2,889.3	2,569.2	2,763.4	2,776.2	2,816.6	40.4
Business support services.	856.7	869.2	888.3	888.3	834.5	859.4	868.0	864.6	-3.4
Services to buildings and dwellings.	1,766.9	1,938.2	1,897.3	1,809.1	1,840.8	1,889.1	1,888.2	1,884.9	-3.3
Waste management and remediation services.	373.2	379.9	377.9	374.4	375.9	377.9	378.4	377.7	-0.7
Education and health services.	20,673	20,964	21,052	20,991	20,496	20,782	20,823	20,823	0
Educational services.	3,463.0	3,529.6	3,570.1	3,500.5	3,344.7	3,381.8	3,388.0	3,388.6	0.6
Health care and social assistance.	17,209.5	17,434.2	17,481.8	17,490.9	17,150.9	17,399.7	17,435.1	17,434.1	-1.0
Health care ³	14,492.7	14,657.9	14,697.9	14,699.7	14,453.7	14,636.7	14,667.3	14,661.3	-6.0
Ambulatory health care services ¹	6,441.9	6,597.2	6,621.4	6,620.0	6,419.3	6,578.3	6,603.5	6,599.4	-4.1
Offices of physicians.	2,433.0	2,463.7	2,470.3	2,476.9	2,417.9	2,454.4	2,462.0	2,460.8	-1.2
Outpatient care centers.	670.6	703.5	707.1	712.5	669.7	703.2	707.6	711.2	3.6
Home health care services.	1,244.4	1,304.3	1,315.1	1,309.5	1,239.5	1,301.0	1,310.8	1,307.1	-3.7
Hospitals.	4,831.0	4,834.5	4,843.4	4,841.6	4,823.4	4,833.7	4,835.6	4,833.2	-2.4
Nursing and residential care facilities ¹	3,219.8	3,226.2	3,233.1	3,238.1	3,211.0	3,224.7	3,228.2	3,228.7	0.5
Nursing care facilities.	1,669.9	1,658.6	1,657.4	1,654.1	1,665.5	1,657.3	1,654.4	1,650.5	-3.9
Social assistance ¹	2,716.8	2,776.3	2,783.9	2,791.2	2,697.2	2,763.0	2,767.8	2,772.8	5.0
Child day care services.	869.7	874.0	875.4	871.4	857.3	858.6	859.0	858.2	-0.8
Leisure and hospitality.	13,591	14,219	14,016	13,963	13,901	14,262	14,282	14,291	9
Arts, entertainment, and recreation.	1,825.6	2,002.7	1,892.4	1,875.8	1,982.0	2,042.2	2,043.1	2,037.7	-5.4
Performing arts and spectator sports.	396.9	435.3	415.1	395.6	414.0	429.9	428.0	416.4	-11.6
Museums, historical sites, and similar institutions.	130.1	138.5	135.3	133.0	137.4	138.7	140.4	139.7	-0.7
Amusements, gambling, and recreation.	1,298.6	1,428.9	1,342.0	1,347.2	1,430.6	1,473.6	1,474.7	1,481.6	6.9
Accommodation and food services.	11,765.8	12,216.2	12,123.9	12,087.4	11,919.2	12,219.3	12,238.6	12,253.0	14.4
Accommodation.	1,755.2	1,831.2	1,783.0	1,782.8	1,818.3	1,840.1	1,841.0	1,846.0	5.0
Food services and drinking places.	10,010.6	10,385.0	10,340.9	10,304.6	10,100.9	10,379.2	10,397.6	10,407.0	9.4
Other services.	5,448	5,491	5,488	5,481	5,470	5,495	5,499	5,500	1
Repair and maintenance.	1,191.3	1,201.1	1,195.4	1,197.4	1,199.7	1,199.7	1,200.2	1,204.5	4.3
Personal and laundry services.	1,328.2	1,347.7	1,347.0	1,346.3	1,328.3	1,349.6	1,346.5	1,345.9	-0.6
Membership associations and organizations.	2,928.7	2,942.6	2,945.9	2,937.3	2,941.5	2,945.3	2,951.9	2,949.8	-2.1
Government.	22,239	22,209	22,337	22,211	21,874	21,847	21,862	21,849	-13
Federal.	2,798.0	2,711.0	2,711.0	2,727.0	2,799.0	2,717.0	2,722.0	2,720.0	-2.0
Federal, except U.S. Postal Service.	2,189.9	2,120.6	2,120.9	2,123.9	2,194.8	2,128.9	2,129.5	2,125.3	-4.2
U.S. Postal Service.	608.3	590.2	590.3	603.3	603.7	587.8	592.3	594.5	2.2
State government.	5,150.0	5,205.0	5,238.0	5,160.0	5,040.0	5,048.0	5,053.0	5,051.0	-2.0
State government education.	2,502.1	2,556.7	2,590.6	2,518.5	2,381.3	2,391.2	2,397.2	2,398.0	0.8
State government, excluding education.	2,648.1	2,648.3	2,646.9	2,641.7	2,658.6	2,656.9	2,655.9	2,652.5	-3.4
Local government.	14,291.0	14,293.0	14,388.0	14,324.0	14,035.0	14,082.0	14,087.0	14,078.0	-9.0
Local government education.	8,097.0	8,040.8	8,145.9	8,101.9	7,763.2	7,791.5	7,793.6	7,778.7	-14.9
Local government, excluding education.	6,194.0	6,252.1	6,242.2	6,221.7	6,271.3	6,290.5	6,293.3	6,298.8	5.5

¹ Includes other industries, not shown separately.

² Includes motor vehicles, motor vehicle bodies and trailers, and motor vehicle parts.

³ Includes ambulatory health care services, hospitals, and nursing and residential care facilities.

^P Preliminary

ESTABLISHMENT DATA

Table B-2. Average weekly hours and overtime of all employees on private nonfarm payrolls by industry sector, seasonally adjusted

Industry	Dec. 2012	Oct. 2013	Nov. 2013 ^p	Dec. 2013 ^p
AVERAGE WEEKLY HOURS				
Total private.....	34.5	34.4	34.5	34.4
Goods-producing.....	40.4	40.4	40.6	40.5
Mining and logging.....	43.5	44.3	44.6	45.0
Construction.....	39.3	38.8	39.0	38.8
Manufacturing.....	40.8	40.9	41.0	41.0
Durable goods.....	41.0	41.3	41.5	41.3
Nondurable goods.....	40.4	40.1	40.2	40.3
Private service-providing.....	33.3	33.3	33.3	33.2
Trade, transportation, and utilities.....	34.5	34.5	34.4	34.5
Wholesale trade.....	38.6	38.8	38.8	38.7
Retail trade.....	31.4	31.3	31.2	31.3
Transportation and warehousing.....	38.4	38.8	38.8	38.8
Utilities.....	42.2	41.9	41.6	42.0
Information.....	36.5	36.7	36.6	36.7
Financial activities.....	37.2	37.1	37.2	37.1
Professional and business services.....	36.0	36.1	36.2	36.1
Education and health services.....	32.8	32.8	32.8	32.7
Leisure and hospitality.....	26.1	25.8	26.0	25.9
Other services.....	31.5	31.6	31.7	31.6
AVERAGE OVERTIME HOURS				
Manufacturing.....	3.3	3.4	3.4	3.5
Durable goods.....	3.2	3.4	3.5	3.5
Nondurable goods.....	3.4	3.3	3.3	3.5

p Preliminary

ESTABLISHMENT DATA

Table B-3. Average hourly and weekly earnings of all employees on private nonfarm payrolls by industry sector, seasonally adjusted

Industry	Average hourly earnings				Average weekly earnings			
	Dec. 2012	Oct. 2013	Nov. 2013 ^p	Dec. 2013 ^p	Dec. 2012	Oct. 2013	Nov. 2013 ^p	Dec. 2013 ^p
Total private.....	\$23.75	\$24.11	\$24.15	\$24.17	\$819.38	\$829.38	\$833.18	\$831.45
Goods-producing.....	24.89	25.34	25.39	25.45	1,005.56	1,023.74	1,030.83	1,030.73
Mining and logging.....	29.14	30.22	30.31	30.20	1,267.59	1,338.75	1,351.83	1,359.00
Construction.....	25.97	26.24	26.25	26.37	1,020.62	1,018.11	1,023.75	1,023.16
Manufacturing.....	24.07	24.54	24.60	24.64	982.06	1,003.69	1,008.60	1,010.24
Durable goods.....	25.44	25.93	25.98	26.03	1,043.04	1,070.91	1,078.17	1,075.04
Nondurable goods.....	21.72	22.12	22.18	22.23	877.49	887.01	891.64	895.87
Private service-providing.....	23.47	23.82	23.85	23.87	781.55	793.21	794.21	792.48
Trade, transportation, and utilities.....	20.73	21.07	21.10	21.09	715.19	726.92	725.84	727.61
Wholesale trade.....	27.36	27.84	27.94	28.01	1,056.10	1,080.19	1,084.07	1,083.99
Retail trade.....	16.48	16.67	16.67	16.62	517.47	521.77	520.10	520.21
Transportation and warehousing.....	21.92	22.55	22.57	22.59	841.73	874.94	875.72	876.49
Utilities.....	34.89	35.12	35.12	35.55	1,472.36	1,471.53	1,460.99	1,493.10
Information.....	32.18	33.15	33.35	33.29	1,174.57	1,216.61	1,220.61	1,221.74
Financial activities.....	29.80	30.38	30.48	30.42	1,108.56	1,127.10	1,133.86	1,128.58
Professional and business services.....	28.29	28.55	28.61	28.67	1,018.44	1,030.66	1,035.68	1,034.99
Education and health services.....	24.47	24.70	24.73	24.73	802.62	810.16	811.14	808.67
Leisure and hospitality.....	13.38	13.58	13.58	13.66	349.22	350.36	353.08	353.79
Other services.....	21.10	21.48	21.49	21.54	664.65	678.77	681.23	680.66

p Preliminary

ESTABLISHMENT DATA

Table B-4. Indexes of aggregate weekly hours and payrolls for all employees on private nonfarm payrolls by industry sector, seasonally adjusted

[2007=100]

Industry	Index of aggregate weekly hours ¹					Index of aggregate weekly payrolls ²				
	Dec. 2012	Oct. 2013	Nov. 2013 ^p	Dec. 2013 ^p	Percent change from: Nov. 2013 - Dec. 2013 ^p	Dec. 2012	Oct. 2013	Nov. 2013 ^p	Dec. 2013 ^p	Percent change from: Nov. 2013 - Dec. 2013 ^p
Total private.....	97.5	98.8	99.3	99.1	-0.2	110.4	113.7	114.4	114.2	-0.2
Goods-producing.....	85.3	86.1	86.8	86.5	-0.3	95.9	98.6	99.6	99.5	-0.1
Mining and logging.....	117.6	123.3	124.3	126.0	1.4	137.5	149.6	151.3	152.8	1.0
Construction.....	77.4	78.0	78.6	78.0	-0.8	87.3	88.9	89.7	89.4	-0.3
Manufacturing.....	87.7	88.2	88.7	88.7	0.0	98.2	100.7	101.4	101.7	0.3
Durable goods.....	86.5	87.7	88.4	88.0	-0.5	97.7	101.0	102.0	101.8	-0.2
Nondurable goods.....	89.9	89.0	89.4	89.7	0.3	99.0	99.8	100.6	101.1	0.5
Private service-providing.....	100.8	102.6	102.8	102.6	-0.2	114.6	118.4	118.8	118.6	-0.2
Trade, transportation, and utilities.....	96.7	98.1	98.1	98.6	0.5	107.9	111.3	111.4	112.0	0.5
Wholesale trade.....	96.3	97.9	98.1	98.1	0.0	109.9	113.8	114.4	114.7	0.3
Retail trade.....	95.7	97.3	97.2	97.8	0.6	104.3	107.3	107.1	107.5	0.4
Transportation and warehousing.....	98.8	100.0	100.7	100.7	0.0	109.9	114.4	115.4	115.5	0.1
Utilities.....	101.4	100.7	100.1	100.8	0.7	116.9	116.8	116.2	118.4	1.9
Information.....	89.2	89.9	89.7	89.6	-0.1	102.2	106.1	106.5	106.2	-0.3
Financial activities.....	95.4	96.1	96.4	96.2	-0.2	110.9	113.9	114.6	114.1	-0.4
Professional and business services.....	102.8	106.3	106.9	106.7	-0.2	117.8	123.0	123.9	123.9	0.0
Education and health services.....	109.4	111.0	111.2	110.9	-0.3	125.5	128.4	128.8	128.4	-0.3
Leisure and hospitality.....	103.5	105.0	106.0	105.6	-0.4	111.7	115.0	116.1	116.4	0.3
Other services.....	95.5	96.2	96.6	96.3	-0.3	114.3	117.3	117.8	117.7	-0.1

¹ The indexes of aggregate weekly hours are calculated by dividing the current month's estimates of aggregate hours by the corresponding 2007 annual average aggregate hours. Aggregate hours estimates are the product of estimates of average weekly hours and employment.

² The indexes of aggregate weekly payrolls are calculated by dividing the current month's estimates of aggregate weekly payrolls by the corresponding 2007 annual average aggregate weekly payrolls. Aggregate payrolls estimates are the product of estimates of average hourly earnings, average weekly hours, and employment.

p Preliminary

ESTABLISHMENT DATA

Table B-5. Employment of women on nonfarm payrolls by industry sector, seasonally adjusted

Industry	Women employees (in thousands)				Percent of all employees			
	Dec. 2012	Oct. 2013	Nov. 2013 ^p	Dec. 2013 ^p	Dec. 2012	Oct. 2013	Nov. 2013 ^p	Dec. 2013 ^p
Total nonfarm.....	66,466	67,486	67,606	67,681	49.3	49.4	49.4	49.4
Total private.....	53,993	54,994	55,104	55,185	47.9	47.9	47.9	48.0
Goods-producing.....	4,099	4,112	4,121	4,125	22.1	22.0	22.0	22.0
Mining and logging.....	115	118	117	118	13.4	13.3	13.2	13.2
Construction.....	730	742	743	742	12.8	12.7	12.7	12.7
Manufacturing.....	3,254	3,252	3,261	3,265	27.2	27.1	27.1	27.1
Durable goods.....	1,734	1,740	1,745	1,749	23.1	23.1	23.1	23.1
Nondurable goods.....	1,520	1,512	1,516	1,516	34.1	34.0	34.0	34.0
Private service-providing.....	49,894	50,882	50,983	51,060	52.9	53.0	53.0	53.0
Trade, transportation, and utilities.....	10,408	10,660	10,690	10,741	40.4	40.8	40.8	40.9
Wholesale trade.....	1,706.4	1,721.5	1,721.1	1,727.7	29.9	29.8	29.7	29.7
Retail trade.....	7,517.7	7,739.0	7,765.4	7,803.9	50.1	50.6	50.7	50.7
Transportation and warehousing.....	1,046.1	1,062.3	1,066.5	1,072.3	23.3	23.6	23.5	23.6
Utilities.....	138.0	137.0	137.4	136.9	24.9	24.7	24.7	24.7
Information.....	1,069	1,071	1,074	1,068	39.9	39.9	40.0	40.0
Financial activities.....	4,530	4,544	4,544	4,543	57.8	57.4	57.4	57.4
Professional and business services.....	8,037	8,368	8,388	8,403	44.3	44.7	44.7	44.7
Education and health services.....	15,723	15,925	15,963	15,964	76.7	76.6	76.7	76.7
Leisure and hospitality.....	7,249	7,424	7,432	7,450	52.1	52.1	52.0	52.1
Other services.....	2,878	2,890	2,892	2,891	52.6	52.6	52.6	52.6
Government.....	12,473	12,492	12,502	12,496	57.0	57.2	57.2	57.2

p Preliminary

ESTABLISHMENT DATA

Table B-6. Employment of production and nonsupervisory employees on private nonfarm payrolls by industry sector, seasonally adjusted¹

[In thousands]

Industry	Dec. 2012	Oct. 2013	Nov. 2013 ^p	Dec. 2013 ^p
Total private.....	93,237	94,735	94,920	94,998
Goods-producing.....	13,347	13,451	13,495	13,475
Mining and logging.....	639	654	655	656
Construction.....	4,300	4,407	4,429	4,408
Manufacturing.....	8,408	8,390	8,411	8,411
Durable goods.....	5,167	5,177	5,189	5,188
Nondurable goods.....	3,241	3,213	3,222	3,223
Private service-providing.....	79,890	81,284	81,425	81,523
Trade, transportation, and utilities.....	21,877	22,112	22,165	22,224
Wholesale trade.....	4,609.2	4,667.2	4,671.7	4,677.3
Retail trade.....	12,918.7	13,104.0	13,127.8	13,174.6
Transportation and warehousing.....	3,902.6	3,891.3	3,916.3	3,923.6
Utilities.....	446.0	449.2	449.5	448.3
Information.....	2,170	2,174	2,173	2,164
Financial activities.....	6,026	6,087	6,091	6,093
Professional and business services.....	15,009	15,518	15,553	15,584
Education and health services.....	17,965	18,215	18,252	18,259
Leisure and hospitality.....	12,273	12,601	12,611	12,620
Other services.....	4,570	4,577	4,580	4,579

¹ Data relate to production employees in mining and logging and manufacturing, construction employees in construction, and nonsupervisory employees in the service-providing industries. These groups account for approximately four-fifths of the total employment on private nonfarm payrolls.

p Preliminary

ESTABLISHMENT DATA

Table B-7. Average weekly hours and overtime of production and nonsupervisory employees on private nonfarm payrolls by industry sector, seasonally adjusted¹

Industry	Dec. 2012	Oct. 2013	Nov. 2013 ^p	Dec. 2013 ^p
AVERAGE WEEKLY HOURS				
Total private.....	33.7	33.6	33.7	33.6
Goods-producing.....	41.3	41.3	41.5	41.4
Mining and logging.....	45.8	45.3	45.8	46.2
Construction.....	39.7	39.4	39.8	39.3
Manufacturing.....	41.8	41.9	42.1	42.1
Durable goods.....	42.1	42.4	42.5	42.5
Nondurable goods.....	41.3	41.2	41.3	41.4
Private service-providing.....	32.5	32.4	32.4	32.4
Trade, transportation, and utilities.....	33.8	33.6	33.5	33.6
Wholesale trade.....	38.7	38.6	38.8	38.4
Retail trade.....	30.4	30.1	29.9	30.1
Transportation and warehousing.....	38.2	38.4	38.4	38.5
Utilities.....	41.1	41.3	41.1	41.7
Information.....	35.8	35.7	35.6	36.0
Financial activities.....	36.9	36.6	36.7	36.7
Professional and business services.....	35.3	35.3	35.5	35.2
Education and health services.....	32.3	32.1	32.2	32.1
Leisure and hospitality.....	25.0	25.0	25.0	25.0
Other services.....	30.6	30.5	30.7	30.6
AVERAGE OVERTIME HOURS				
Manufacturing.....	4.3	4.4	4.5	4.6
Durable goods.....	4.2	4.5	4.6	4.6
Nondurable goods.....	4.4	4.3	4.3	4.5

¹ Data relate to production employees in mining and logging and manufacturing, construction employees in construction, and nonsupervisory employees in the service-providing industries. These groups account for approximately four-fifths of the total employment on private nonfarm payrolls.

p Preliminary

ESTABLISHMENT DATA

Table B-8. Average hourly and weekly earnings of production and nonsupervisory employees on private nonfarm payrolls by industry sector, seasonally adjusted¹

Industry	Average hourly earnings				Average weekly earnings			
	Dec. 2012	Oct. 2013	Nov. 2013 ^p	Dec. 2013 ^p	Dec. 2012	Oct. 2013	Nov. 2013 ^p	Dec. 2013 ^p
Total private.....	\$19.93	\$20.27	\$20.32	\$20.35	\$671.64	\$681.07	\$684.78	\$683.76
Goods-producing.....	21.08	21.33	21.36	21.45	870.60	880.93	886.44	888.03
Mining and logging.....	26.21	27.11	27.16	27.18	1,200.42	1,228.08	1,243.93	1,255.72
Construction.....	24.15	24.28	24.25	24.44	958.76	956.63	965.15	960.49
Manufacturing.....	19.17	19.39	19.43	19.50	801.31	812.44	818.00	820.95
Durable goods.....	20.26	20.45	20.49	20.54	852.95	867.08	870.83	872.95
Nondurable goods.....	17.39	17.63	17.67	17.78	718.21	726.36	729.77	736.09
Private service-providing.....	19.68	20.05	20.09	20.12	639.60	649.62	650.92	651.89
Trade, transportation, and utilities.....	17.49	17.86	17.94	17.90	591.16	600.10	600.99	601.44
Wholesale trade.....	22.40	22.81	22.91	22.95	866.88	880.47	888.91	881.28
Retail trade.....	13.85	14.09	14.14	14.08	421.04	424.11	422.79	423.81
Transportation and warehousing.....	19.42	20.04	20.07	20.06	741.84	769.54	770.69	772.31
Utilities.....	31.80	32.54	32.45	32.77	1,306.98	1,343.90	1,333.70	1,366.51
Information.....	27.48	27.99	28.05	28.08	983.78	999.24	998.58	1,010.88
Financial activities.....	23.37	24.24	24.30	24.30	862.35	887.18	891.81	891.81
Professional and business services.....	23.48	23.75	23.77	23.84	828.84	838.38	843.84	839.17
Education and health services.....	21.25	21.59	21.62	21.68	686.38	693.04	696.16	695.93
Leisure and hospitality.....	11.67	11.86	11.83	11.93	291.75	296.50	295.75	298.25
Other services.....	17.77	18.11	18.14	18.20	543.76	552.36	556.90	556.92

¹ Data relate to production employees in mining and logging and manufacturing, construction employees in construction, and nonsupervisory employees in the service-providing industries. These groups account for approximately four-fifths of the total employment on private nonfarm payrolls.

p Preliminary

ESTABLISHMENT DATA

Table B-9. Indexes of aggregate weekly hours and payrolls for production and nonsupervisory employees on private nonfarm payrolls by industry sector, seasonally adjusted¹

[2002=100]

Industry	Index of aggregate weekly hours ²					Index of aggregate weekly payrolls ³				
	Dec. 2012	Oct. 2013	Nov. 2013 ^p	Dec. 2013 ^p	Percent change from: Nov. 2013 - Dec. 2013 ^p	Dec. 2012	Oct. 2013	Nov. 2013 ^p	Dec. 2013 ^p	Percent change from: Nov. 2013 - Dec. 2013 ^p
Total private.....	104.9	106.2	106.8	106.5	-0.3	139.6	143.8	144.9	144.8	-0.1
Goods-producing.....	84.2	84.9	85.6	85.2	-0.5	108.7	110.9	111.9	112.0	0.1
Mining and logging.....	155.5	157.4	159.4	161.1	1.1	237.1	248.2	251.8	254.6	1.1
Construction.....	85.5	86.9	88.3	86.7	-1.8	111.5	114.0	115.6	114.5	-1.0
Manufacturing.....	80.7	80.7	81.3	81.3	0.0	101.1	102.3	103.3	103.7	0.4
Durable goods.....	81.7	82.5	82.9	82.9	0.0	103.4	105.3	106.0	106.2	0.2
Nondurable goods.....	78.9	78.0	78.4	78.6	0.3	96.9	97.2	97.9	98.8	0.9
Private service-providing.....	110.8	112.4	112.6	112.7	0.1	149.4	154.4	155.0	155.4	0.3
Trade, transportation, and utilities.....	103.1	103.6	103.5	104.1	0.6	128.6	132.0	132.5	132.9	0.3
Wholesale trade.....	105.0	106.1	106.7	105.8	-0.8	138.6	142.6	144.1	143.0	-0.8
Retail trade.....	99.4	99.8	99.4	100.4	1.0	118.0	120.6	120.4	121.1	0.6
Transportation and warehousing.....	112.2	112.5	113.2	113.7	0.4	138.2	143.0	144.1	144.7	0.4
Utilities.....	93.7	94.9	94.5	95.6	1.2	124.4	128.9	128.0	130.8	2.2
Information.....	88.7	88.6	88.3	88.9	0.7	120.6	122.7	122.6	123.6	0.8
Financial activities.....	104.7	104.9	105.2	105.3	0.1	150.5	156.4	157.3	157.4	0.1
Professional and business services.....	118.7	122.8	123.7	122.9	-0.6	165.9	173.5	175.0	174.4	-0.3
Education and health services.....	125.2	126.1	126.8	126.4	-0.3	174.9	179.0	180.2	180.2	0.0
Leisure and hospitality.....	112.4	115.4	115.5	115.6	0.1	148.9	155.4	155.1	156.6	1.0
Other services.....	98.1	97.9	98.6	98.3	-0.3	127.0	129.2	130.3	130.3	0.0

¹ Data relate to production employees in mining and logging and manufacturing, construction employees in construction, and nonsupervisory employees in the service-providing industries. These groups account for approximately four-fifths of the total employment on private nonfarm payrolls.

² The indexes of aggregate weekly hours are calculated by dividing the current month's estimates of aggregate hours by the corresponding 2002 annual average aggregate hours. Aggregate hours estimates are the product of estimates of average weekly hours and employment.

³ The indexes of aggregate weekly payrolls are calculated by dividing the current month's estimates of aggregate weekly payrolls by the corresponding 2002 annual average aggregate weekly payrolls. Aggregate payrolls estimates are the product of estimates of average hourly earnings, average weekly hours, and employment.

p Preliminary