

Publications

The NCES publishes a wide variety of special reports on crime in schools, including the *Crime, Violence, Discipline, and Safety in U.S. Public Schools* and *Indicators of School Crime and Safety*. To learn more about these reports or the SCS, please visit <http://nces.ed.gov/programs/crime>.

Useful Information

- www.StopBullying.gov
- Suicide Prevention Lifeline
1-800-273-TALK (1-800-273-8255)
- Child Help USA National Child Abuse Hotline
1-800-4-A-CHILD (1-800-422-4453)
- www.victimsofcrime.org/help-for-crime-victims/

**National Center for Education Statistics
Institute of Education Sciences**

**550 12th Street SW
Washington, DC 20202**

**nces.ed.gov
202-403-5551**

www.ed.gov



ies.ed.gov

Tell Us About Your Experiences at School

The School Crime Supplement (SCS) to the National Crime Victimization Survey for Students in Grades 6 Through 12



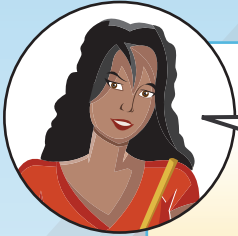
NCES 2016-134
U.S. DEPARTMENT OF EDUCATION

The School Crime Supplement (SCS) is a national survey that asks students in grades 6 through 12 about experiences they have in school.



Do I have to take the survey?

The survey is voluntary and there are no penalties for not participating, but we hope that you respond.



Why are my answers to the survey important?

The survey helps school administrators and others interested in school crime make decisions about how to keep schools safe.



What will the survey ask me?

We will ask you about fighting, bullying, cyber-bullying, weapons, and drugs and gangs at your school, among other things.



Why am I being asked to complete this survey?

Your household was one of more than 50,000 households selected to participate in the National Crime Victimization Survey. We're asking all students in grades 6 through 12 in those households to complete the SCS. We will collect data about crime in schools, and how it affects students.



Will anyone find out what my answers are?

Your answers will not be shared with your parents, teacher, or school. Your name will not appear in any report.

Stay tuned!

You will be contacted to complete the survey between January and June 2017.