



Animal and Plant
Health Inspection
Service

Veterinary Services

NAHMS Equine 2015

Tick Evaluation and Data Collection Record



National Animal Health
Monitoring System

2150 Centre Ave, Bldg B
Fort Collins, CO 80526

Form Approved
OMB Number 0579-0269
EXP. DATE: XX/20XX

Farm ID: (6 digits)	Kit #:	Collector name and phone number:	Date: (mm/dd/yy)

Tick Exam and Collection Instructions

Equids to sample: Sample up to 10 equids on the operation. Select equids that have the greatest chance of tick exposure—i.e., equids that have access to grass or foliage even if the grass/foliage is located only at the edge(s) of a dirt pen or paddock. Equids that are not turned out in a pasture or have access to other foliage have a low risk of tick exposure.

Kits: Each kit includes one glass tube prefilled with 70% ethanol and two tick collection tools: one Tick Key and one Pro tick.

1. Perform a full-body scratch inspection on the animal with your fingers to locate ticks. Record the location and number of ticks according to the diagram provided on the data collection form. For example, 20 ticks located by the left ear is entered as **A-left (20)** on the data collection form. Approximately 200 ticks on the right side of the tail is entered as **G-right (200)**.
2. Use one of the two tick removal tools (instructions are included with each tool) to remove the tick and place it in the glass tube (prefilled with 70% ethanol).
3. From each equid where ticks are observed, collect a representative sample of ticks from each location on that equid. All collected ticks for the operation should be placed in the same tube.
4. Ship the tube along with the yellow copy of the Data Collection Record to NVSL, using the enclosed FedEx shipping label.
5. Send the original white copy of the Data Collection Record to your NAHMS Coordinator within 3 business days.

State/op #: _____

Tick kit #: _____

Collection date: _____

Collector name: _____

Phone #: _____

Tick Location Diagram

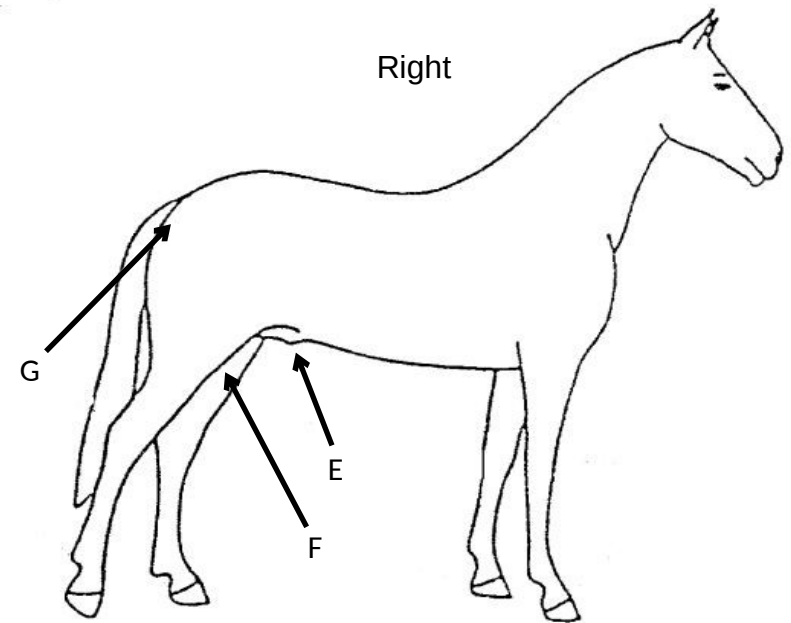
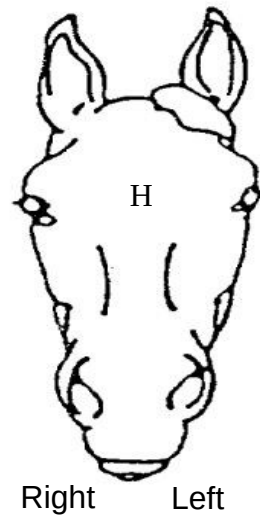
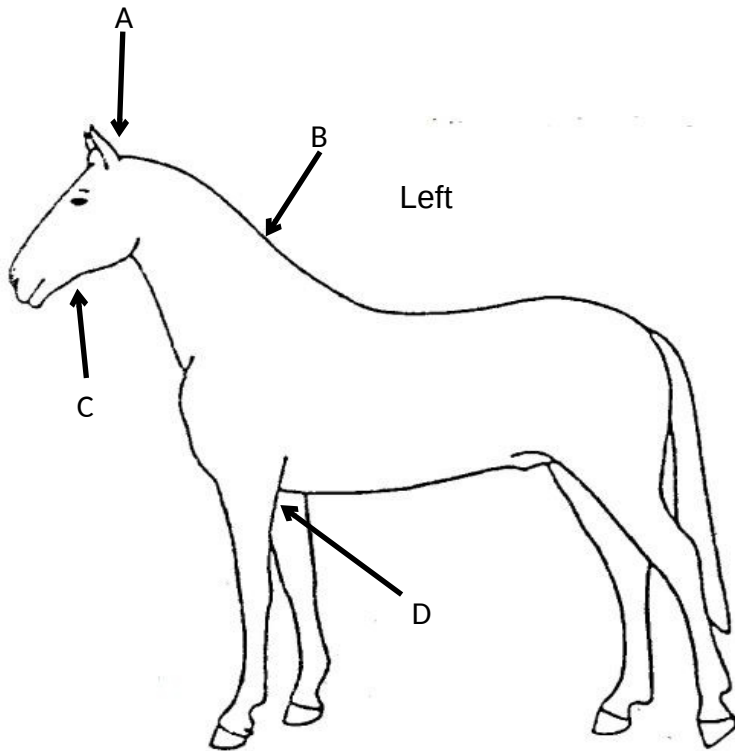
~~These are common locations of ticks on a horse or other equid. Please use the codes below to indicate on the Data Collection form where ticks are~~

According to the Paperwork Reduction Act of 1995, an agency may not conduct or sponsor, and a person is not required to respond to, a collection of information unless it displays a valid OMB control number. The valid OMB control number for this information collection is 0579-0269. The time required to complete this information collection is estimated to average 2 hours per response, including the time for reviewing instructions, searching existing data sources, gathering and maintaining the data needed, and completing and reviewing the collection of information.

NAHMS-337
JUN 2014

- B. Mane
- C. Intermandibular space
- D. Girth or axilla
- E. Sheath or udder

- G. Tail head or under tail
- H. Face
- I. Other (specify on Data Collection Record)



Reference Codes for Tick Collection

Gender codes		
1 = Intact male (stallion or colt)	3 = Nonpregnant female (mare or filly)	5 = Spayed female
2 = Castrated male (gelding)	4 = Pregnant female	
Primary use codes		
1 = Pleasure	3 = Breeding	5 = Farm or ranch work
2 = Show or competition (not betting)	4 = Racing	6 = Other (specify in column)
Equine type		
1 = Horse	3 = Donkey	5 = Miniature
2 = Mule	4 = Pony	6 = Other
Breed codes		
1 = Appaloosa	6 = Mustang	11 = Tennessee Walker
2 = Arabian	7 = Paint	12 = Thoroughbred
3 = Draft breed	8 = Quarter horse	13 = Warmblood breeds
4 = Miniature horse	9 = Saddlebred	14 = Other registered breed (specify on collection form)
5 = Morgan	10 = Standardbred	15 = Other nonregistered breed (specify on collection form)
Color (color of majority of body)		
1 = Red	4 = White	7 = Red roan
2 = Brown	5 = Black	8 = Blue roan
3 = Gray	6 = Tan/Buckskin /Palomino	9 = Other (specify)

Tick Prevention/Treatment Product List