

# Work@Health™ Hands-on, Online, and Blended Data Collection Flow Chart

Work@Health Begins  
December 2013

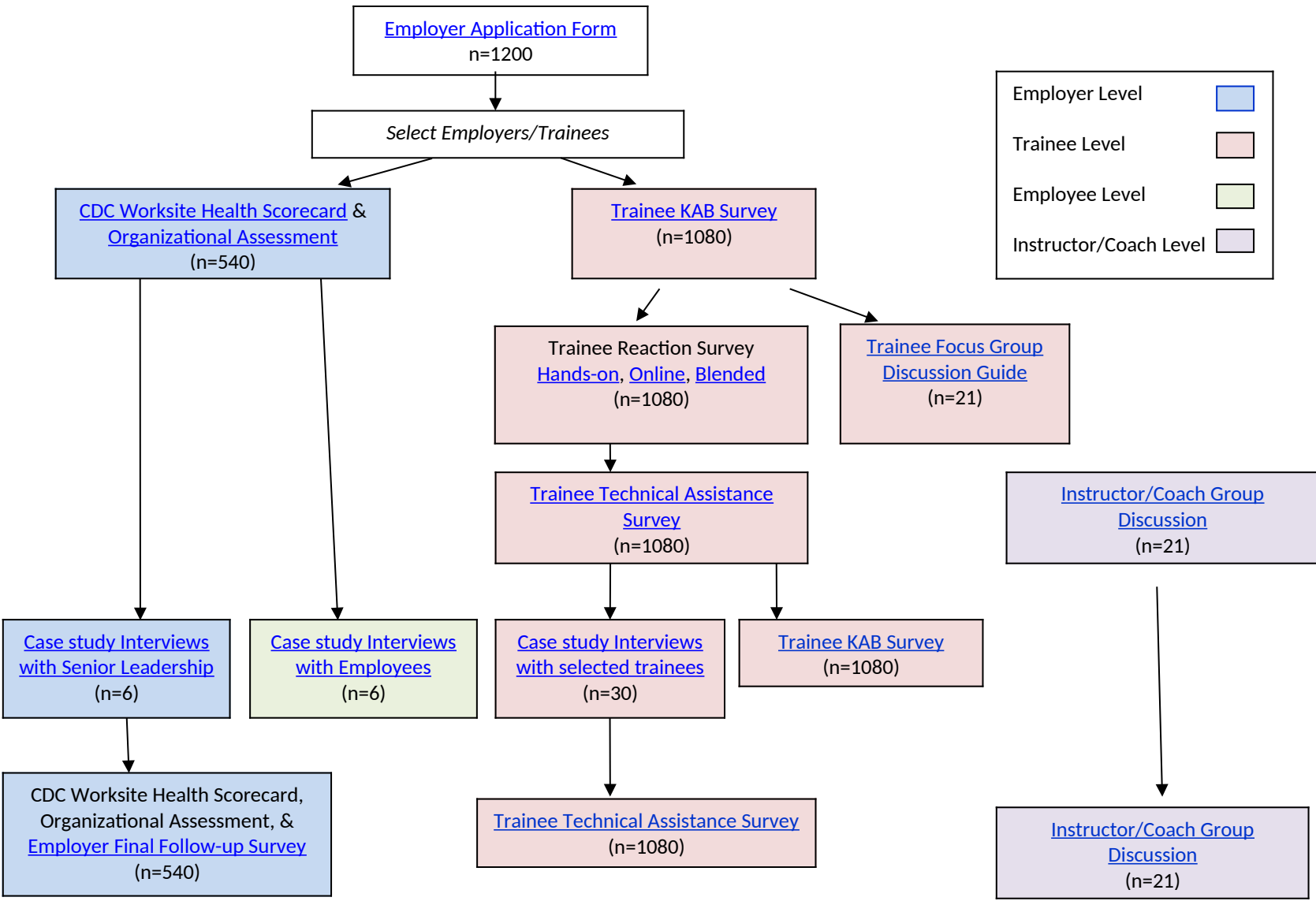
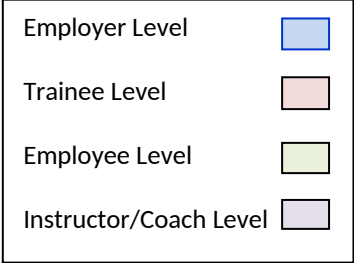
1 month prior to training  
March 2013

Training/At Immediate  
conclusion of training  
April 2013

Post training -  
August/November 2014  
(4-7 months after)

Post training  
March - June 2015

Post training/TA  
April/July 2015 (12-15  
months post training)



# Work@Health™ Train-the-Trainer Data Collection Flow Chart

Work@Health Begin  
December 2013

[Train-the-Trainer Application Form](#)  
(n=120)

Select Train-the-Trainer Participants

[Train-the-Trainer Participant Survey](#)  
(n=60)

1 month prior to training  
March 2013

[Trainee Reaction Survey](#)  
(n=60)

At Immediate conclusion of training  
April 2013

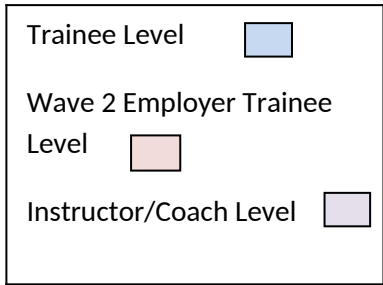
[Trainee Technical Assistance Survey](#)  
(n=60)

Post training  
August/November 2014  
(4-7 months after)

At Immediate conclusion of Wave 2 training (prior to Jan 2015)

trainees train 5 employers  
using hands-on model: wave 2

Wave 2 Trainee Reaction Survey  
(n=300)



[Instructor/Coach Group Discussion](#)  
(n=21)

Post training  
April/July 2015 (12-15 months after training)

[Train-the-Trainer Participation Survey](#)  
(n=60)

[Train-the-Trainer Trainee Technical Assistance Survey](#)  
(n=60)

[Instructor/Coach Group Discussion](#)  
(n=21)

