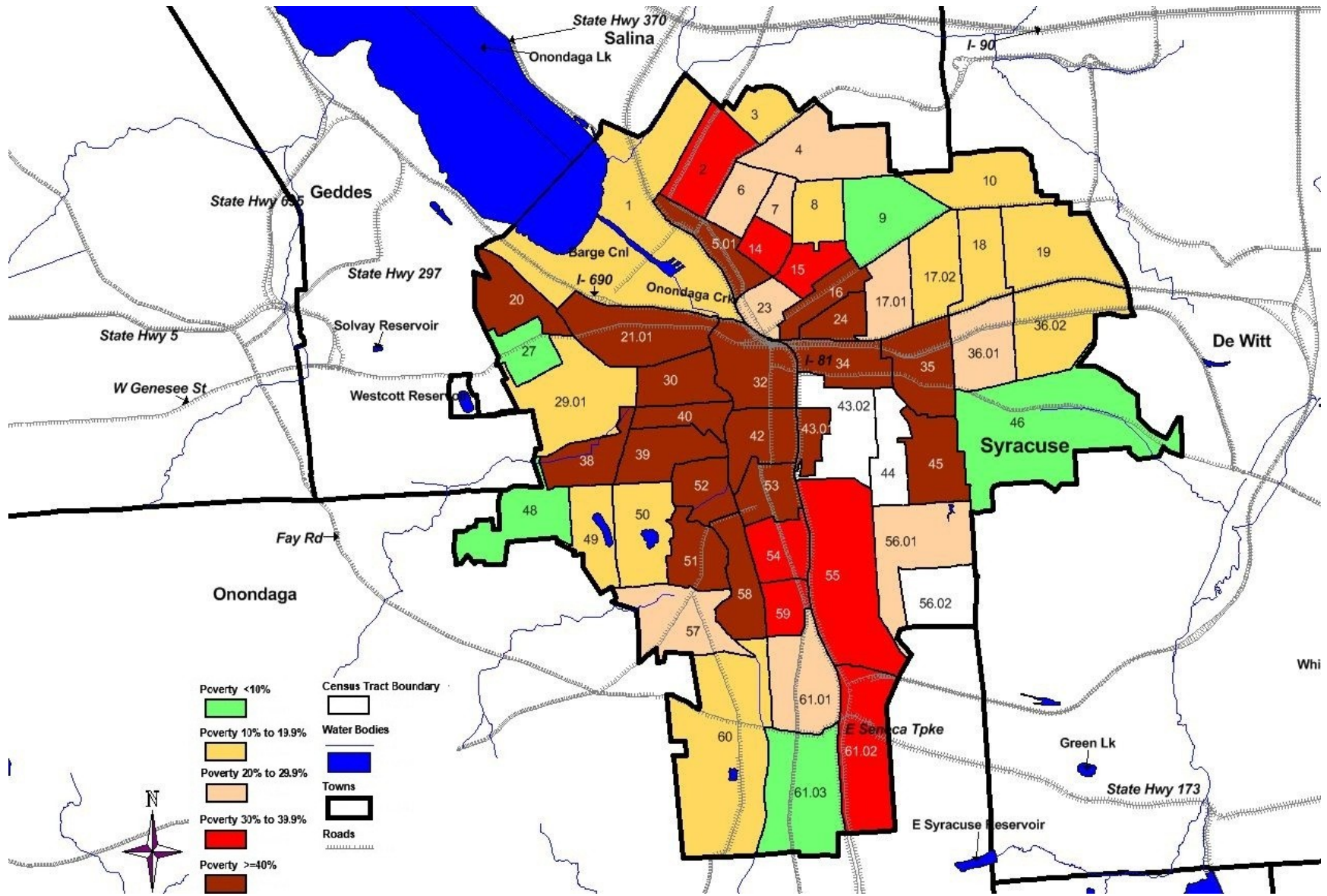


Attachment 6. Map showing Syracuse census tracts by poverty rate



Attachment 6 Table: Syracuse census tract demographics for low-income neighborhood tracts with a poverty rate of approximately 40% or higher

Demographics of tracts with a poverty rate near or higher than 40% in the Southwest neighborhood of Syracuse based on 2010 census and American Community Survey 2006-2010 data (for poverty rates).											
Tract	Total Population	% White	% African American	% Asian	% Hispanic	% Minority	% 20-64 years	% >64 years	% Female	% Male	% Below Poverty
58	2,510	9.9	83.3	0.3	4.8	91.2	51.2	7.6	54.9	45.1	40.2
53	1975	13.4	78.9	0.3	5.4	87.3	44.3	13.1	51.3	48.7	53.0
52	2127	10.5	76.3	0.1	11.4	91.9	51.4	8.2	53	47	41.4
51	2434	25.4	61.6	0.2	12.3	79.7	55.1	6.3	54.4	45.6	43.6
42	2065	10.7	78.7	0.2	11.5	92.3	52.2	6.1	58.9	41.1	73.9
40	1580	33.7	39.6	0.3	30.6	74.6	52.7	6.3	52.7	47.3	41.1
39	3602	32.9	44.1	0.3	30.4	77.3	55.3	6.3	51.7	48.3	51.1
38	2520	46.7	31.2	0.4	23.8	60.8	52.7	9	54.8	45.2	45.8
32	2146	51.1	30.9	13.9	5.3	51.5	86.9	5.1	30.9	69.1	46.4
30	2111	32.6	47.7	0.2	34.2	77.1	58.5	6.9	46.7	53.3	58.3
21.01	2791	61.8	22.8	0.5	14.1	43.9	59	7.4	51.6	48.4	43.1
20	2264	79.8	9.6	0.2	6.7	23.1	62.6	7.5	50.2	49.8	46.6
54	2761	8.7	83.3	0.4	8.9	94.1	49.5	9.1	54	46	39.5
59	1834	14.6	75.4	0.3	11.1	88.5	51.9	8.8	53.7	46.3	37.5