



Released December 19, 2014, by the National Agricultural Statistics Service (NASS), Agricultural Statistics Board, United States Department of Agriculture (USDA).

November Milk Production up 3.5 Percent

Milk production in the 23 major States during November totaled 15.5 billion pounds, up 3.5 percent from November 2013. October revised production, at 16.0 billion pounds, was up 3.7 percent from October 2013. The October revision represented a decrease of 35 million pounds or 0.2 percent from last month's preliminary production estimate.

Production per cow in the 23 major States averaged 1,806 pounds for November, 41 pounds above November 2013. This is the highest production per cow for the month of November since the 23 State series began in 2003.

The number of milk cows on farms in the 23 major States was 8.59 million head, 93,000 head more than November 2013, and 3,000 head more than October 2014.

November Milk Production in the United States up 3.4 Percent

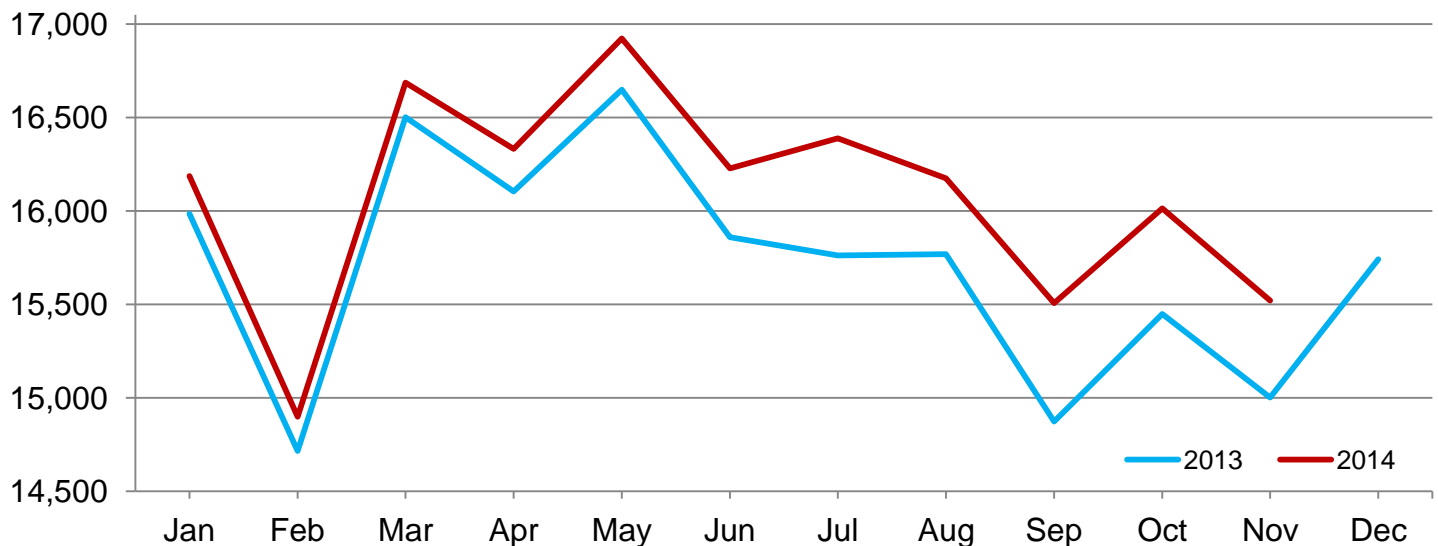
Milk production in the United States during November totaled 16.5 billion pounds, up 3.4 percent from November 2013.

Production per cow in the United States averaged 1,782 pounds for November, 42 pounds above November 2013.

The number of milk cows on farms in the United States was 9.28 million head, 82,000 head more than November 2013, and 4,000 head more than October 2014.

Monthly Milk Production – 23 Selected States

Million pounds



Milk Cows and Production by Quarter – United States: 2013-2014

[May not add due to rounding]

Quarter	Milk Cows ¹		Milk Per Cow ²		Milk Production ²		
	2013 ³	2014	2013 ³	2014	2013	2014	Change From 2013
	(1,000 Head)	(1,000 Head)	(Pounds)	(Pounds)	(Million Pounds)	(Million Pounds)	(Percent)
January-March		9,214		5,540	50,545	51,046	1.0
April-June		9,253		5,713	51,997	52,861	1.7
July-September	9,224	9,271	5,356	5,518	49,408	51,156	3.5
October-December	9,201		5,355		49,268		
Annual	9,221		21,822		201,218		

¹ Includes dry cows. Excludes heifers not yet fresh.

² Excludes milk sucked by calves.

³ Survey was not conducted in April and July, resulting in no milk cow and milk per cow data for March through June. 2013 annual totals include modeled data.

Milk Cows and Production By Month – 23 Selected States: 2013-2014

Month	Milk cows ¹		Milk per cow ²		Milk production ²		
	2013 ³	2014	2013 ³	2014	2013	2014	Change from 2013
	(1,000 head)	(1,000 head)	(pounds)	(pounds)	(million pounds)	(million pounds)	(percent)
January	8,497	8,512	1,881	1,902	15,985	16,186	1.3
February	8,498	8,513	1,732	1,750	14,715	14,899	1.3
March		8,521		1,958	16,501	16,687	1.1
April		8,542		1,912	16,105	16,332	1.4
May		8,559		1,977	16,648	16,922	1.6
June		8,572		1,893	15,860	16,227	2.3
July	8,522	8,583	1,850	1,909	15,762	16,388	4.0
August	8,522	8,582	1,850	1,885	15,768	16,174	2.6
September	8,508	8,590	1,748	1,805	14,874	15,507	4.3
October	8,504	8,589	1,817	1,864	15,449	16,013	3.7
November	8,499	8,592	1,765	1,806	15,002	15,520	3.5
December	8,504		1,851		15,741		
Annual	8,508		22,145		188,410		

¹ Includes dry cows. Excludes heifers not yet fresh.

² Excludes milk sucked by calves.

³ Survey was not conducted in April and July, resulting in no milk cow and milk per cow data for March through June.

Estimated Milk Cows and Production By Month – United States: 2013-2014

Month	Milk cows ¹		Milk per cow ²		Milk production ²		
	2013 ³	2014	2013 ³	2014	2013	2014	Change from 2013
	(1,000 head)	(1,000 head)	(pounds)	(pounds)	(million pounds)	(million pounds)	(percent)
January	9,222	9,210	1,855	1,878	17,109	17,293	1.1
February	9,223	9,212	1,709	1,728	15,759	15,920	1.0
March		9,221		1,934	17,677	17,833	0.9
April		9,238		1,891	17,249	17,468	1.3
May		9,254		1,954	17,813	18,080	1.5
June		9,267		1,868	16,935	17,313	2.2
July	9,235	9,271	1,818	1,882	16,788	17,448	3.9
August	9,229	9,265	1,819	1,858	16,789	17,214	2.5
September	9,208	9,276	1,719	1,778	15,831	16,494	4.2
October	9,203	9,276	1,790	1,839	16,475	17,060	3.6
November	9,198	9,280	1,740	1,782	16,003	16,540	3.4
December	9,202		1,825		16,790		
Annual	9,221		21,822		201,218		

¹ Includes dry cows. Excludes heifers not yet fresh.

² Excludes milk sucked by calves.

³ Survey was not conducted in April and July, resulting in no milk cow and milk per cow data for March through June.

Milk Cows and Production – 23 Selected States: November 2013 and 2014

[May not add due to rounding]

State	Milk cows ¹		Milk per cow ²		Milk production ²		Change from 2013
	2013	2014	2013	2014	2013	2014	
	(1,000 head)	(1,000 head)	(pounds)	(pounds)	(million pounds)	(million pounds)	(percent)
Arizona	190	193	1,860	1,930	353	372	5.4
California	1,780	1,780	1,840	1,880	3,275	3,346	2.2
Colorado	138	145	1,975	2,030	273	294	7.7
Florida	123	123	1,495	1,535	184	189	2.7
Idaho	567	579	1,885	1,920	1,069	1,112	4.0
Illinois	96	92	1,550	1,550	149	143	-4.0
Indiana	178	179	1,730	1,775	308	318	3.2
Iowa	206	207	1,775	1,840	366	381	4.1
Kansas	135	143	1,800	1,800	243	257	5.8
Michigan	380	399	1,930	1,965	733	784	7.0
Minnesota	461	460	1,565	1,615	721	743	3.1
New Mexico	322	323	1,990	1,975	641	638	-0.5
New York	611	615	1,750	1,805	1,069	1,110	3.8
Ohio	268	267	1,600	1,630	429	435	1.4
Oregon	123	124	1,625	1,615	200	200	-
Pennsylvania	530	530	1,585	1,640	840	869	3.5
South Dakota	95	97	1,735	1,810	165	176	6.7
Texas	440	470	1,770	1,785	779	839	7.7
Utah	93	96	1,775	1,855	165	178	7.9
Vermont	132	132	1,570	1,630	207	215	3.9
Virginia	94	92	1,490	1,535	140	141	0.7
Washington	266	276	1,885	1,905	501	526	5.0
Wisconsin	1,271	1,270	1,725	1,775	2,192	2,254	2.8
23-State Total	8,499	8,592	1,765	1,806	15,002	15,520	3.5

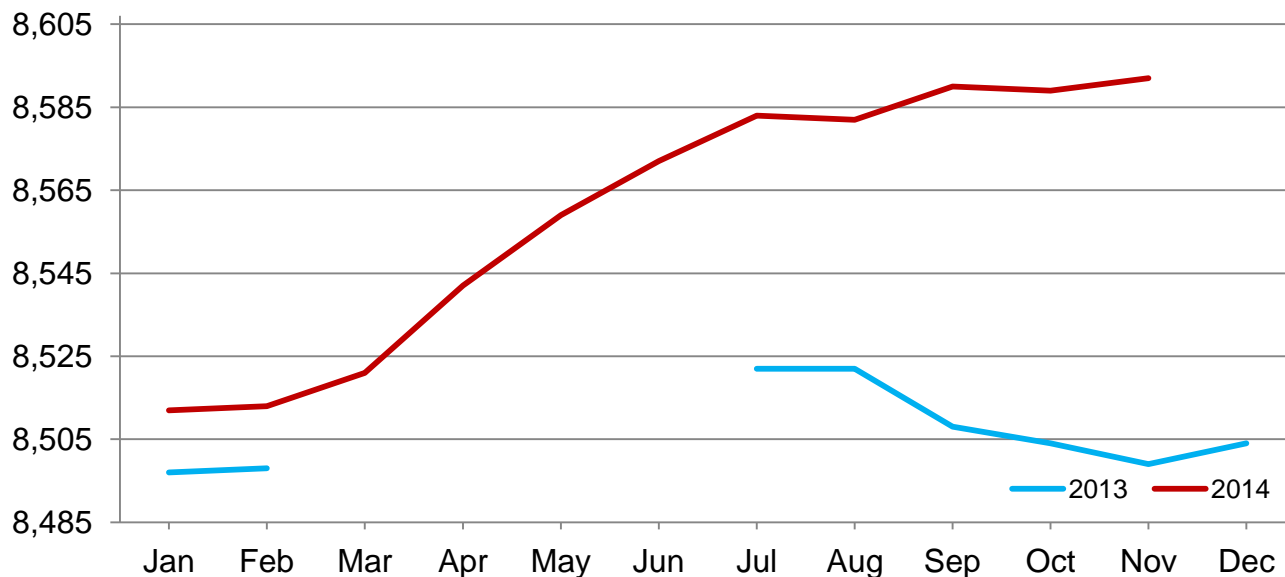
- Represents zero.

¹ Includes dry cows. Excludes heifers not yet fresh.

² Excludes milk sucked by calves.

Monthly Milk Cows – 23 Selected States

Thousand head



Milk Cows and Production – 23 Selected States: October 2013 and 2014

[May not add due to rounding]

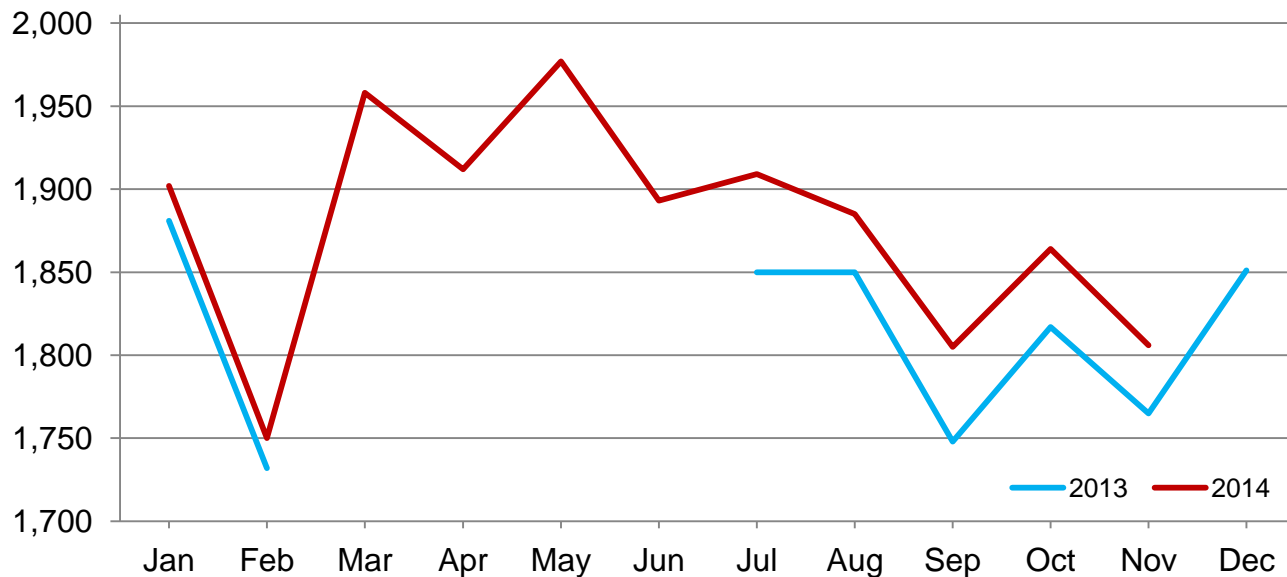
	Milk cows ¹		Milk per cow ²		Milk Production ²		Change from 2013
	2013	2014	2013	2014	2013	2014	
	(1,000 head)	(1,000 head)	(pounds)	(pounds)	(million pounds)	(million pounds)	(percent)
Arizona	190	193	1,880	1,915	357	370	3.6
California	1,780	1,779	1,875	1,930	3,338	3,433	2.8
Colorado	137	145	2,030	2,105	278	305	9.7
Florida	123	123	1,400	1,470	172	181	5.2
Idaho	569	579	1,950	2,010	1,110	1,164	4.9
Illinois	97	93	1,570	1,600	152	149	-2.0
Indiana	178	179	1,790	1,820	319	326	2.2
Iowa	206	207	1,820	1,885	375	390	4.0
Kansas	135	143	1,835	1,855	248	265	6.9
Michigan	380	397	2,000	2,050	760	814	7.1
Minnesota	463	460	1,610	1,655	745	761	2.1
New Mexico	322	323	2,025	2,050	652	662	1.5
New York	610	615	1,840	1,880	1,122	1,156	3.0
Ohio	269	267	1,650	1,710	444	457	2.9
Oregon	123	124	1,690	1,685	208	209	0.5
Pennsylvania	530	530	1,620	1,680	859	890	3.6
South Dakota	95	97	1,830	1,860	174	180	3.4
Texas	440	470	1,820	1,825	801	858	7.1
Utah	93	96	1,840	1,920	171	184	7.6
Vermont	132	132	1,620	1,680	214	222	3.7
Virginia	94	92	1,510	1,580	142	145	2.1
Washington	266	275	1,975	1,995	525	549	4.6
Wisconsin	1,272	1,270	1,795	1,845	2,283	2,343	2.6
23-State Total	8,504	8,589	1,817	1,864	15,449	16,013	3.7

¹ Includes dry cows. Excludes heifers not yet fresh.

² Excludes milk sucked by calves.

Monthly Milk per Cow – 23 Selected States

Pounds



Statistical Methodology

Survey Procedures: Primary data used to determine these estimates were obtained from a sample of producers. Individual States maintain a list of all known milk producers and information on the size of their herd. States use all known sources of producers to ensure that their lists are as complete as possible. Generally, all large producers and a sample of small producers are included in the survey. Questionnaires are mailed to producers near the end of the month to obtain data for the first day of the month. Additional reports are obtained by telephone, as needed, to supplement the mail response. Where feasible, States utilize state and federal administrative data to estimate milk production. This eliminates duplication of data gathering by different government agencies. Indications of milk cow inventory are also obtained in the January Cattle Surveys.

Estimation Procedures: State offices prepare these estimates by using a combination of survey indications, historic trends, and any available administrative data. Individual State estimates are reviewed by the Agricultural Statistics Board for reasonableness.

Revision Policy: Milk production, milk per cow, and number of milk cows are subject to revision the following month after initial publication for monthly States or the following quarter for the quarterly States. Normally, administrative data from Federal Market Orders, State Departments of Agriculture, or other sources are the main basis for revisions. However, administrative data for all States may not be available in time for these revisions. Estimates are again subject to revisions in February each year based on additional administrative data. In the event that additional changes are necessary, a third revision is possible in February the following year. Estimates are again reviewed after data from the five-year Census of Agriculture are available. No revisions are made after that date.

Reliability: Since all operations with dairy animals are not included in the sample, survey estimates are subject to sampling variability. Survey results are also subject to non-sampling errors such as omissions, duplications, and mistakes in reporting, recording, and processing the data. The effects of these errors cannot be measured directly. They are minimized through rigid quality controls in the data collection process and through a careful review of all reported data for consistency and reasonableness.

To assist users in evaluating the reliability of the estimates in this report, the "Root Mean Square Error" is shown for selected items in the table below. The "Root Mean Square Error" is a statistical measure based on past performance and is computed using the differences between first and final estimates. The "Root Mean Square Error" for the 23 State milk production estimates over the past 24 months is 0.2 percent. This means that chances are 2 out of 3 that the final estimate will not be above or below the current estimate of 15.5 billion pounds by more than 0.2 percent. Chances are 9 out of 10 that the difference will not exceed 0.3 percent.

Reliability of Monthly Milk Production Estimates

[Based on data for the past 24 months]

Item	Root mean square error	90 percent confidence level	Difference between first and latest estimate				
			Average	Smallest	Largest	Months	
						Below latest	Above latest
	(percent)	(percent)	(1,000)	(1,000)	(1,000)	(number)	(number)
Milk production	0.2	0.3	26	1	81	15	9
All Milk cows	0.1	0.1	4	0	11	10	12

Information Contacts

Listed below are the commodity specialists in the Livestock Branch of the National Agricultural Statistics Service to contact for additional information. E-mail inquiries may be sent to nass@nass.usda.gov.

Dan Kerestes, Chief, Livestock Branch	(202) 720-3570
Scott Hollis, Head, Livestock Section	(202) 690-2424
Travis Averill – Cattle, Cattle on Feed	(202) 720-3040
Sherry Bertramsen – Livestock Slaughter	(202) 720-3240
Doug Bounds – Hogs and Pigs	(202) 720-3106
Donnie Fike – Dairy Products	(202) 690-3236
Mike Miller – Milk Production and Milk Cows	(202) 720-3278
Evan Schulz – Sheep and Goats	(202) 720-6147

Access to NASS Reports

For your convenience, you may access NASS reports and products the following ways:

- All reports are available electronically, at no cost, on the NASS web site: <http://www.nass.usda.gov>
- Both national and state specific reports are available via a free e-mail subscription. To set-up this free subscription, visit <http://www.nass.usda.gov> and in the “Follow NASS” box under “Receive reports by Email,” click on “National” or “State” to select the reports you would like to receive.

For more information on NASS surveys and reports, call the NASS Agricultural Statistics Hotline at (800) 727-9540, 7:30 a.m. to 4:00 p.m. ET, or e-mail: nass@nass.usda.gov.

The U.S. Department of Agriculture (USDA) prohibits discrimination against its customers, employees, and applicants for employment on the basis of race, color, national origin, age, disability, sex, gender identity, religion, reprisal, and where applicable, political beliefs, marital status, familial or parental status, sexual orientation, or all or part of an individual's income is derived from any public assistance program, or protected genetic information in employment or in any program or activity conducted or funded by the Department. (Not all prohibited bases will apply to all programs and/or employment activities.)

If you wish to file a Civil Rights program complaint of discrimination, complete the [USDA Program Discrimination Complaint Form](#) (PDF), found online at http://www.ascr.usda.gov/complaint_filing_cust.html, or at any USDA office, or call (866) 632-9992 to request the form. You may also write a letter containing all of the information requested in the form. Send your completed complaint form or letter to us by mail at U.S. Department of Agriculture, Director, Office of Adjudication, 1400 Independence Avenue, S.W., Washington, D.C. 20250-9410, by fax (202) 690-7442 or email at program.intake@usda.gov.