



United States  
Department of  
Agriculture

National  
Agricultural  
Statistics  
Service



ISSN: 1948-2698

# Noncitrus Fruits and Nuts 2012 Preliminary Summary

## January 2013

# USDA





## Contents

Noncitrus Fruit Highlights .....	6
Noncitrus Fruits and Nuts Bearing Acreage, Yield, Production, Price, and Value by Crop - United States: 2010-2012.....	8
Fruits and Nuts Bearing Acreage by Type – United States: 2010-2012 .....	11
Noncitrus Fruits Utilized Production by Type of Utilization – United States: 2010-2012.....	11
Noncitrus Fruits Utilized Production – United States: 2012 Chart.....	12
Noncitrus Fruits Value of Utilized Production – United States: 2012 Chart.....	12
Commercial Apple Bearing Acreage, Yield, Production, Price, and Value – States and United States: 2010-2012 .....	14
Commercial Apple Fresh Market Utilization, Price, and Value – States and United States: 2010-2012 .....	17
Commercial Apple Processed Utilization, Price, and Value – States and United States: 2010-2012.....	19
Commercial Apple Processed Utilization and Price by Use – States and United States: 2010-2012.....	21
Unutilized Apple Production – States and United States: 2010-2012 .....	22
Commercial Apple Bearing Acreage – United States: 2003-2012 Chart.....	23
Commercial Apple Utilized Production – United States: 2003-2012 Chart .....	23
Other Fruit Bearing Acreage, Yield, Production, Utilization, Price, and Value by Crop – States and United States: 2010-2012.....	24
Other Unutilized Fruit Production by Crop – States and United States: 2010-2012 .....	30
Other Processed Fruit Utilization and Price by Crop and Use – States and United States: 2010-2012.....	30
Olive Production by Variety – California: 2010-2012.....	31
Dry Fruit Production and Price by Use – California: 2010-2012 .....	31
Fresh Basis Equivalents for Selected Dry Fruits – California: 2010-2012.....	31
Strawberry Area Planted, Harvested, Yield, Production, Price, and Value – States and United States: 2010-2012 .....	32
Strawberry Utilization, Price, and Value by Utilization – States and United States: 2010-2012 .....	33
Berry Area Harvested, Yield, Production, Utilization, Price, and Value by Crop – States and United States: 2010-2012.....	34
Unutilized Berry Production – States and United States: 2010-2012 .....	38
Blackberry Area Harvested, Yield, Production, Utilization, Price, and Value by Variety – Oregon: 2010-2012.....	39
Unutilized Cultivated Blackberry Production by Variety – States and United States: 2010-2012.....	39

Sweet Cherry Bearing Acreage, Yield, Production, Utilization, Price, and Value – States and United States: 2010-2012 .....	40
Tart Cherry Bearing Acreage, Yield, Production, Utilization, Price, and Value – States and United States: 2010-2012 .....	42
Sweet and Tart Cherry Processed Utilization and Price by Use – States and United States: 2010-2012 .....	44
Unutilized Cherry Production by Crop – States and United States: 2010-2012 .....	45
Sweet Cherry Bearing Acreage – United States: 2003-2012 Chart .....	46
Tart Cherry Bearing Acreage – United States: 2003-2012 Chart.....	46
Cranberry Area Harvested, Yield, Production, Utilization, Price and Value – States and United States: 2010-2012 .....	47
Grape Bearing Acreage, Yield, Production, Price, and Value – States and United States: 2010-2012 .....	48
Unutilized Grape Production – States and United States: 2010-2012.....	49
Grape Fresh and Processed Utilization, Price, and Value – States and United States: 2010-2012.....	50
Grape Processed Utilization and Price by Use – States and United States: 2010-2012.....	52
Grape Processed Utilization by Variety – States and United States: 2010-2012 .....	53
Concord Grapes for Processing Marketing Year Average Prices – New York and Pennsylvania: 2010-2012 .....	53
Peach Bearing Acreage, Yield, Production, Price, and Value – States and United States: 2010-2012.....	54
Peach Utilized Production, Price, and Value by Utilization – States and United States: 2010-2012 .....	56
Peach Processed Utilization and Price by Use – States and United States: 2010-2012 .....	58
Unutilized Peach Production – States and United States: 2010-2012.....	58
Peach Bearing Acreage – United States: 2003-2012 Chart.....	59
Peach Bearing Utilized Production – United States: 2003-2012 Chart.....	59
All Pear Bearing Acreage, Yield, Production, Utilization, Price, and Value – States and United States: 2010-2012 .....	60
Unutilized Pear Production – States and United States: 2010-2012 .....	61
Pear Bearing Acreage, Yield, Production, Utilization, Price, and Value by Type – States and United States: 2010-2012 .....	62
Tropical Fruit Acreage Harvested, Yield, Utilized Production, Utilization, Price, and Value by Crop – Hawaii: 2010-2012 .....	64
Apple for Fresh Use Monthly Average Prices Received – States and United States: July 2011-August 2012 .....	66

Apples for Fresh Use Monthly Average Prices Received – United States: July 2008 - December 2012 ..... 66

Grapes for Fresh Use Monthly Average Prices Received – United States: May 2008 - December 2012 ..... 67

Peaches for Fresh Use Monthly Average Prices Received – United States: May 2008 - September 2012 ..... 67

Pears for Fresh Use Monthly Average Prices Received – United States: July 2008 - December 2012..... 67

Tree Nut Bearing Acreage, Yield, Production, Price, and Value by Crop – States: 2010-2012..... 68

Tree Nut Utilization and Meat Production by Crop – States and United States: 2010-2012..... 69

California Almonds Utilized Production – United States: 2003-2012 Chart..... 70

California English Walnuts Utilized Production – United States: 2003-2012 Chart..... 70

Pecan Production, Price, and Value by Variety – States and United States: 2010-2012 ..... 71

Crop Comments ..... 72

Definition of Terms..... 74

Price and Value Definitions ..... 75

State MYA Price and Value Computations ..... 75

United States MYA Price and Value Computations ..... 75

Marketing Seasons for Noncitrus Fruits ..... 76

Marketing Seasons for Tree Nuts..... 77

Statistical Methodology ..... 78

Reliability of Selected Noncitrus Fruit Estimates..... 78

Information Contacts ..... 79

## Noncitrus Fruit Highlights

In 2012, the Nation's utilized production of the leading noncitrus fruit crops totaled 17.4 million tons, down 4 percent from the 2011 utilized production. Utilized production increased from 2011 for Oregon cultivated blackberries, cultivated blueberries, Maine wild blueberries, sweet cherries, cranberries, California olives, and strawberries. Utilized production decreased from 2011 for apples, apricots, boysenberries, red raspberries, all California raspberries, tart cherries, California dates, grapes, California kiwifruit, nectarines, peaches, pears, California plums, California prunes, and prunes and plums.

The value of utilized production for 2012 noncitrus fruit crops totaled 15.0 billion dollars, up 8 percent from 2011. The value of utilized production for apples increased 9 percent, Oregon cultivated blackberries increased 4 percent, Oregon black raspberries are up 3 percent, all California raspberries increased 7 percent, sweet cherries are up 1 percent, cranberries are up 12 percent, grapes increased by 14 percent, nectarines are up 11 percent, California Olives are up 149 percent, peaches increased 7 percent, California plums are up 24 percent, prunes and plums increased 37 percent, and strawberries are slightly above last year. However, the value of utilized production for apricots is slightly down, cultivated blueberries are down 3 percent, Maine wild blueberries are down 5 percent, boysenberries are down 23 percent, red raspberries decreased 12 percent, tart cherries decreased 27 percent, California dates are down 5 percent, and California prunes decreased 13 percent from the previous year.

**This page intentionally left blank.**

## Noncitrus Fruits and Nuts Bearing Acreage, Yield, Production, Price, and Value by Crop - United States: 2010-2012

[Blank cells indicate estimation period has not yet begun]

Crop	Bearing acreage			Yield per acre		
	2010	2011	2012	2010	2011	2012
	(acres)	(acres)	(acres)	(tons fresh equivalent)	(tons fresh equivalent)	(tons fresh equivalent)
<b>Noncitrus fruits</b>						
Apples .....	341,950	330,600	327,800	13.60	14.30	13.80
Apricots .....	12,150	12,150	12,150	5.46	5.49	5.00
Avocados <sup>1</sup> .....	59,930	59,950		2.91	4.39	
Bananas (Hawaii) <sup>1 2</sup> .....	1,100	1,000		8.10	8.70	
Blackberries, cultivated (Oregon) <sup>2</sup> .....	7,500	7,300	6,800	2.91	3.61	3.94
Blueberries						
Cultivated <sup>1</sup> .....	69,610	72,500	77,700	2.95	3.02	2.97
Wild (Maine) .....	(NA)	(NA)	(NA)	(NA)	(NA)	(NA)
Boysenberries <sup>1</sup> .....	500	500	400	2.10	2.60	2.44
Raspberries						
Black (Oregon) .....	1,300	1,100	900	0.67	1.02	1.20
Red .....	10,900	11,000	11,000	3.04	3.56	3.15
All (California) .....	5,400	5,400	5,400	7.50	10.00	9.00
Cherries, Sweet .....	85,030	85,820	86,790	3.68	3.90	4.89
Cherries, Tart .....	35,650	36,000	36,500	2.67	3.22	1.17
Cranberries .....	38,500	38,500	40,300	8.84	10.00	9.98
Dates (California) .....	7,700	8,400	8,400	3.77	3.96	3.70
Figs (California) .....	8,600	8,600	8,600	4.76	4.50	4.50
Grapes .....	951,900	960,100	962,100	7.85	7.76	7.63
Guavas (Hawaii) <sup>1 2</sup> .....	115	110		5.65	8.64	
Kiwifruit (California) .....	4,200	4,200	4,200	7.79	8.98	7.05
Nectarines .....	29,300	27,900	26,400	7.96	8.07	7.16
Olives (California) .....	36,000	41,500	44,000	5.72	1.72	3.64
Papayas (Hawaii) <sup>1 2</sup> .....	1,350	1,300		11.20	11.00	
Peaches .....	117,630	112,480	112,880	9.78	9.53	8.67
Pears .....	56,000	54,400	54,400	14.50	17.80	15.80
Plums (California) .....	26,200	25,500	25,000	5.39	6.27	4.60
Prunes (California) .....	61,000	58,000	55,000	2.13	2.36	2.27
Prunes and Plums <sup>3</sup> .....	3,060	2,810	2,780	3.95	4.73	4.76
Strawberries <sup>2</sup> .....	56,990	57,420	56,140	25.10	25.30	26.90
Total .....	2,029,565	2,024,540	1,965,640	(X)	(X)	(X)
				(tons in-shell equivalent)	(tons in-shell equivalent)	(tons in-shell equivalent)
<b>Tree nuts</b>						
Almonds (California) <sup>4</sup> .....	740,000	760,000	780,000	1.91	2.24	2.21
Hazelnuts (Oregon) .....	29,000	28,500	29,000	0.97	1.35	1.20
Macadamias (Hawaii) .....	15,000	15,000	15,000	1.34	1.64	1.47
Pecans .....	(NA)	(NA)	(NA)	(NA)	(NA)	(NA)
Pistachios (California) .....	137,000	153,000	178,000	1.91	1.45	1.55
Walnuts (California) .....	237,000	245,000	245,000	2.13	1.88	1.92
Total .....	1,158,000	1,201,500	1,247,000	(X)	(X)	(X)

See footnote(s) at end of table.

--continued



**Noncitrus Fruits and Nuts Bearing Acreage, Yield, Production, Price, and Value by Crop - United States: 2010-2012 (continued)**

[Blank cells indicate estimation period has not yet begun]

Crop	Total production			Utilized production		
	2010	2011	2012	2010	2011	2012
	(1,000 tons fresh equivalent)	(1,000 tons fresh equivalent)	(1,000 tons fresh equivalent)	(1,000 tons fresh equivalent)	(1,000 tons fresh equivalent)	(1,000 tons fresh equivalent)
<b>Noncitrus fruits</b>						
Apples .....	4,645.8	4,712.5	4,530.6	4,606.5	4,659.0	4,498.3
Apricots .....	66.4	66.7	60.8	66.4	66.6	60.8
Avocados <sup>1</sup> .....	174.3	263.0		174.3	263.0	
Bananas (Hawaii) <sup>1</sup> .....	(NA)	(NA)		8.9	8.7	
Blackberries, cultivated (Oregon) <sup>1</sup> .....	22.6	26.4	26.8	21.8	26.3	26.8
Blueberries						
Cultivated .....	208.3	221.6	236.7	205.4	218.5	230.9
Wild (Maine) .....	41.5	40.0	45.6	41.5	40.0	45.6
Boysenberries .....	1.1	1.3	1.0	1.1	1.3	1.0
Raspberries						
Black (Oregon) .....	0.9	1.1	1.1	0.9	1.1	1.1
Red .....	33.1	39.2	34.7	33.1	39.2	34.7
All (California) .....	40.5	54.0	48.6	40.5	54.0	48.6
Cherries, sweet .....	313.2	334.4	424.0	307.6	330.3	418.4
Cherries, tart .....	95.2	115.9	42.6	91.6	115.2	42.5
Cranberries <sup>5</sup> .....	340.4	385.7	402.3	340.4	385.7	402.3
Dates (California) .....	29.0	33.3	31.1	29.0	33.3	31.1
Figs (California) .....	40.9	38.7	38.7	40.9	38.7	38.7
Grapes .....	7,471.2	7,447.7	7,343.4	7,468.5	7,440.4	7,337.0
Guavas (Hawaii) <sup>1</sup> .....	(NA)	(NA)		0.7	1.0	
Kiwifruit (California) .....	32.7	37.7	29.6	32.5	36.7	27.1
Nectarines .....	233.2	225.2	188.9	233.2	225.2	188.9
Olives (California) .....	206.0	71.2	160.0	206.0	71.2	160.0
Papayas (Hawaii) <sup>1</sup> .....	(NA)	(NA)		15.1	14.3	
Peaches .....	1,150.3	1,071.8	978.3	1,130.6	1,043.0	965.4
Pears .....	813.6	965.7	858.2	813.4	965.1	858.1
Plums (California) .....	141.3	160.0	115.0	141.3	160.0	115.0
Prunes (California) .....	390.0	444.0	395.0	390.0	444.0	395.0
Prunes and Plums <sup>3</sup> .....	12.1	13.3	13.2	11.2	12.9	12.1
Strawberries .....	(NA)	(NA)	(NA)	1,426.6	1,452.0	1,507.5
Total .....	(NA)	(NA)	(NA)	17,879.0	18,146.7	17,446.9
	(1,000 tons in-shell equivalent)	(1,000 tons in-shell equivalent)	(1,000 tons in-shell equivalent)	(1,000 tons in-shell equivalent)	(1,000 tons in-shell equivalent)	(1,000 tons in-shell equivalent)
<b>Tree nuts</b>						
Almonds (California) .....	(NA)	(NA)	(NA)	1,413.8	1,703.0	1,730.1
Hazelnuts (Oregon) .....	(NA)	(NA)	(NA)	28.0	38.5	34.7
Macadamias (Hawaii) .....	(NA)	(NA)	(NA)	20.0	24.5	22.0
Pecans .....	(NA)	(NA)	(NA)	146.9	134.9	151.4
Pistachios (California) .....	(NA)	(NA)	(NA)	261.0	222.0	275.5
Walnuts (California) .....	(NA)	(NA)	(NA)	504.0	461.0	470.0
Total .....	(NA)	(NA)	(NA)	2,373.7	2,583.9	2,683.7

See footnote(s) at end of table.

--continued

**Noncitrus Fruits and Nuts Bearing Acreage, Yield, Production, Price, and Value by Crop - United States: 2010-2012 (continued)**

[Blank cells indicate estimation period has not yet begun]

Crop	Price			Value of utilized production		
	2010	2011	2012	2010	2011	2012
	(dollars)	(dollars)	(dollars)	(1,000 dollars)	(1,000 dollars)	(1,000 dollars)
<b>Noncitrus fruits</b>						
Apples ..... pounds	0.251	0.303	0.343	2,313,588	2,823,401	3,088,915
Apricots ..... tons	722.00	616.00	673.00	47,876	41,056	40,879
Avocados <sup>1</sup> ..... tons	2,750.00	1,540.00		479,068	406,047	
Bananas <sup>1</sup> (Hawaii) ..... pounds	0.600	0.650		10,680	11,310	
Blackberries, cultivated (Oregon) ..... pounds	0.763	0.812	0.832	33,291	42,783	44,520
Blueberries						
Cultivated ..... pounds	1.440	1.850	1.690	593,407	807,576	781,808
Wild (Maine) ..... pounds	0.610	0.910	0.758	50,600	72,690	69,075
Boysenberries ..... pounds	0.873	1.010	1.050	1,834	2,638	2,044
Raspberries						
Black (Oregon) ..... pounds	1.260	2.470	2.650	2,185	5,510	5,689
Red ..... pounds	0.853	0.648	0.642	56,426	50,736	44,515
All (California) ..... pounds	2.470	2.070	2.470	200,288	223,200	239,820
Cherries, sweet ..... tons	2,330.00	2,530.00	2,020.00	715,684	834,585	843,311
Cherries, tart ..... pounds	0.222	0.300	0.594	40,741	69,072	50,520
Cranberries ..... barrels	43.90	44.80	47.90	299,123	345,561	385,506
Dates (California) ..... tons	1,270.00	1,320.00	1,340.00	36,830	43,956	41,674
Figs (California) ..... tons	542.00	526.00		22,185	20,336	
Grapes ..... tons	487.00	577.00	669.00	3,634,915	4,293,607	4,911,335
Guavas <sup>1</sup> (Hawaii) ..... pounds	0.169	0.170		220	323	
Kiwifruit (California) ..... tons	768.00	775.00		24,961	28,439	
Nectarines ..... tons	553.00	582.00	767.00	129,075	130,973	144,906
Olives (California) ..... tons	664.00	733.00	813.00	136,796	52,168	130,038
Papayas <sup>1</sup> (Hawaii) ..... pounds	0.370	0.340		11,123	9,722	
Peaches ..... tons	547.00	564.00	654.00	618,566	588,330	631,223
Pears ..... tons	476.00	380.00	509.00	386,955	366,552	437,113
Plums (California) ..... tons	555.00	402.00	695.00	78,422	64,320	79,940
Prunes (California) <sup>6</sup> ..... tons	1,350.00	1,310.00	1,250.00	175,500	179,470	156,250
Prunes and Plums <sup>3</sup> ..... tons	439.00	370.00	540.00	4,915	4,767	6,552
Strawberries ..... cwt	79.30	82.50	79.80	2,262,353	2,394,724	2,405,478
Total <sup>7</sup> .....	(X)	(X)	(X)	12,367,607	13,913,852	15,009,852
<b>Tree nuts</b>						
Almonds, shelled (California) <sup>4</sup> ..... pounds	1.790	1.990	2.200	2,903,380	4,007,860	4,347,200
Hazelnuts (Oregon) ..... tons	2,410.00	2,330.00	1,830.00	67,480	89,705	63,420
Macadamias (Hawaii) ..... pounds	0.750	0.780	0.800	30,000	38,220	35,200
Pecans ..... pounds	2.300	2.430	1.570	674,828	655,889	476,781
Pistachios (California) ..... pounds	2.220	1.980	2.020	1,158,840	879,120	1,113,020
Walnuts (California) <sup>2</sup> ..... tons	2,040.00	2,900.00		1,028,160	1,336,900	
Total <sup>7</sup> .....	(X)	(X)	(X)	5,862,688	7,007,694	7,398,621

(NA) Not available.

(X) Not applicable.

<sup>1</sup> Estimates for 2012 will be published on July 17, 2013.

<sup>2</sup> Harvested acreage. Yield based on utilized production.

<sup>3</sup> Idaho, Michigan, Oregon, and Washington.

<sup>4</sup> Yield based on in-shell equivalent. Shelling ratios are: 2010 - 0.580; 2011 - 0.596; 2012 - 0.578.

<sup>5</sup> Production is rounded to the nearest 1,000 barrels prior to converting to tons fresh equivalent.

<sup>6</sup> Price is for dried basis.

<sup>7</sup> 2012 value of production was estimated for crops with missing values. The 2011 price was used to compute 2012 fig, kiwifruit, and walnut values. The 2011 values for avocados, bananas, guavas, and papayas are carried forward.

## Fruits and Nuts Bearing Acreage by Type – United States: 2010-2012

Year	Citrus fruits <sup>1</sup>	Major deciduous fruits <sup>2</sup>	Miscellaneous noncitrus <sup>3</sup>	Nuts <sup>4</sup>	Total
	(acres)	(acres)	(acres)	(acres)	(acres)
2010 .....	826,500	1,719,870	309,695	1,158,000	4,014,065
2011 .....	811,300	1,705,760	318,780	1,201,500	4,037,340
2012 .....	804,300	1,701,800	263,840	1,247,000	4,016,940

<sup>1</sup> Grapefruit, lemons, oranges, tangelos, and tangerines.

<sup>2</sup> Commercial apples, apricots, cherries, grapes, nectarines, peaches, pears, plums, and prunes.

<sup>3</sup> Avocados, bananas, berries, cranberries, dates, figs, guavas, kiwifruit, olives, papayas, and strawberries.

<sup>4</sup> Almonds, hazelnuts, macadamia nuts, pistachios, and walnuts.

## Noncitrus Fruits Utilized Production by Type of Utilization – United States: 2010-2012

[Blank cells indicate estimation period has not yet begun]

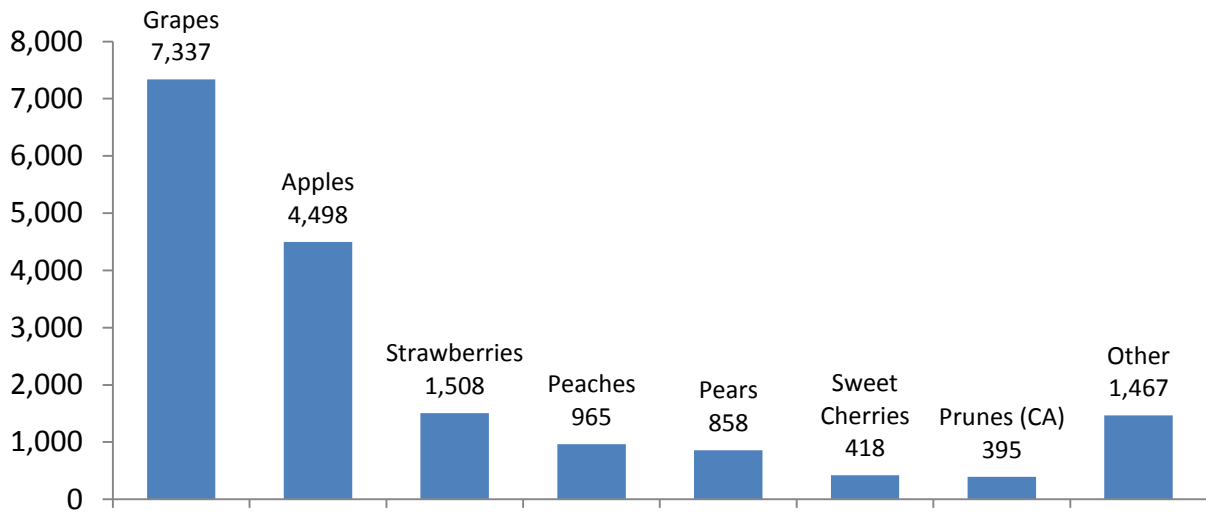
Year	Utilized production <sup>1</sup>	Fresh	Processed <sup>2</sup>					
			Canned	Dried	Juice	Frozen	Wine	Other
	(1,000 tons)	(1,000 tons)	(1,000 tons)	(1,000 tons)	(1,000 tons)	(1,000 tons)	(1,000 tons)	(1,000 tons)
2010 .....	17,879.0	7,458.3	1,386.0	2,317.8	1,103.1	705.9	4,269.8	297.7
2011 .....	18,146.7	7,701.9	1,300.5	2,398.6	1,153.2	736.6	4,154.3	315.9
2012 .....	17,446.9							

<sup>1</sup> Cranberry quantity included in total utilized production, excluded from fresh and processed breakdowns.

<sup>2</sup> Processed strawberries are included in frozen.

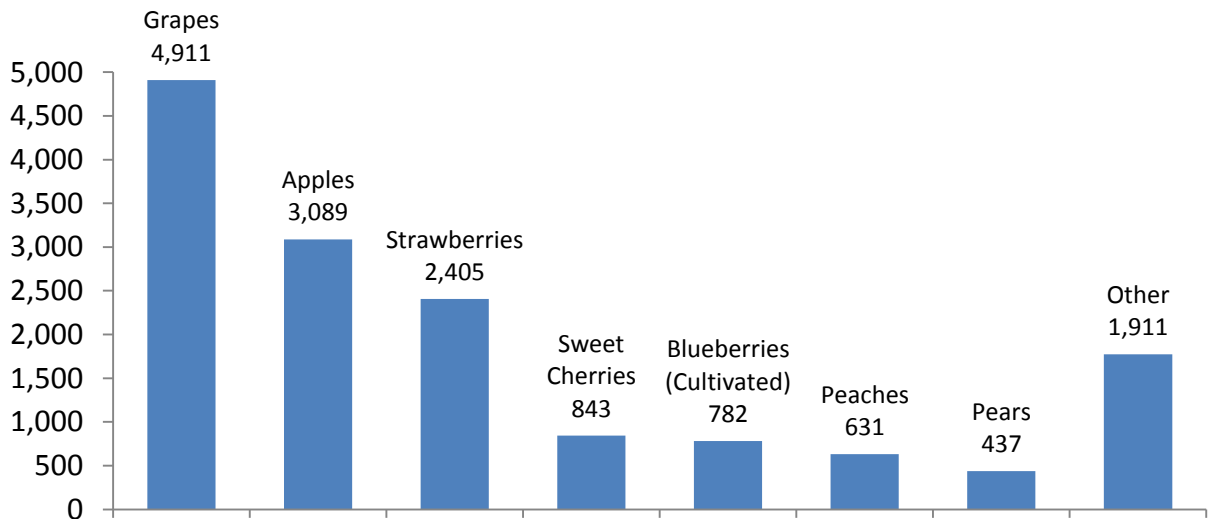
## Noncitrus Fruits Utilized Production by Major Fruit United States: 2012

(000) Tons fresh equivalent



## Noncitrus Fruits Value of Utilized Production by Major Fruit United States: 2012

Million dollars



**This page intentionally left blank.**

**Commercial Apple Bearing Acreage, Yield, Production, Price, and Value – States and United States: 2010-2012**

State	Bearing acreage			Yield per acre <sup>1</sup>		
	2010 (acres)	2011 (acres)	2012 (acres)	2010 (pounds)	2011 (pounds)	2012 (pounds)
Arizona .....	1,200	1,200	1,000	14,200	9,170	8,000
California .....	18,000	17,500	17,500	15,600	16,000	17,100
Colorado .....	1,400	1,300	1,200	10,000	6,920	14,200
Connecticut .....	2,100	2,100	2,100	11,000	10,500	7,860
Idaho .....	2,600	2,600	2,600	23,100	23,100	28,800
Illinois .....	2,200	2,200	2,100	23,600	18,200	15,200
Indiana .....	1,800	1,700	1,500	14,400	11,800	3,000
Iowa .....	1,000	1,000	1,000	3,800	4,000	700
Maine .....	3,100	3,100	3,100	10,000	9,350	9,680
Maryland .....	1,850	1,750	1,800	23,000	22,900	19,400
Massachusetts .....	4,000	4,000	4,000	9,250	9,630	7,000
Michigan .....	35,000	34,000	34,200	16,300	28,800	3,360
Minnesota .....	2,600	2,450	2,400	7,310	9,590	4,670
Missouri .....	1,800	1,800	1,600	18,300	8,330	21,900
New Hampshire .....	1,900	1,900	1,900	11,100	9,470	8,160
New Jersey .....	2,000	1,900	1,900	21,500	18,900	18,400
New York .....	42,000	42,000	42,000	30,500	29,000	17,100
North Carolina .....	6,800	6,900	6,700	20,000	20,300	5,000
Ohio .....	6,300	4,300	4,000	13,200	15,500	8,250
Oregon .....	4,200	4,100	4,000	28,600	22,600	32,500
Pennsylvania .....	21,000	21,000	21,000	23,400	21,800	23,500
Rhode Island .....	300	300	300	8,670	8,330	5,670
Tennessee .....	800	800	700	9,380	10,600	9,140
Utah .....	1,400	1,400	1,400	8,570	13,600	10,000
Vermont .....	2,800	2,800	2,800	12,500	12,000	9,110
Virginia .....	11,800	11,800	11,800	16,900	18,600	19,500
Washington .....	153,000	146,000	146,000	36,300	37,100	44,500
West Virginia .....	4,900	4,900	4,000	13,100	13,700	22,800
Wisconsin .....	4,100	3,800	3,200	9,020	13,500	7,380
United States .....	341,950	330,600	327,800	27,200	28,500	27,600

See footnote(s) at end of table.

--continued

**Commercial Apple Bearing Acreage, Yield, Production, Price, and Value – States and United States: 2010-2012 (continued)**

State	Total production			Utilized production		
	2010 (million pounds)	2011 (million pounds)	2012 (million pounds)	2010 (million pounds)	2011 (million pounds)	2012 (million pounds)
Arizona .....	17.0	11.0	8.0	17.0	11.0	8.0
California .....	280.0	280.0	300.0	280.0	270.0	300.0
Colorado .....	14.0	9.0	17.0	14.0	8.0	16.0
Connecticut .....	23.0	22.0	16.5	22.0	19.5	15.5
Idaho .....	60.0	60.0	75.0	60.0	60.0	75.0
Illinois .....	52.0	40.0	32.0	43.0	33.0	25.0
Indiana .....	26.0	20.0	4.5	24.0	18.0	4.5
Iowa .....	3.8	4.0	0.7	3.1	3.3	0.2
Maine .....	31.0	29.0	30.0	29.0	22.5	27.5
Maryland .....	42.5	40.0	35.0	42.0	39.0	34.7
Massachusetts .....	37.0	38.5	28.0	34.0	36.0	27.5
Michigan .....	570.0	980.0	115.0	570.0	975.0	115.0
Minnesota .....	19.0	23.5	11.2	15.8	19.4	9.4
Missouri .....	33.0	15.0	35.0	32.0	14.0	33.0
New Hampshire .....	21.0	18.0	15.5	19.5	17.0	13.5
New Jersey .....	43.0	36.0	35.0	42.0	35.0	34.0
New York .....	1,280.0	1,220.0	720.0	1,270.0	1,210.0	710.0
North Carolina .....	136.0	140.0	33.5	134.0	140.0	32.0
Ohio .....	83.2	66.6	33.0	71.7	59.4	26.0
Oregon .....	120.0	92.5	130.0	120.0	90.0	128.0
Pennsylvania .....	492.0	458.0	494.0	473.0	439.0	475.0
Rhode Island .....	2.6	2.5	1.7	2.5	2.2	1.6
Tennessee .....	7.5	8.5	6.4	6.8	8.2	6.0
Utah .....	12.0	19.0	14.0	11.7	18.3	13.8
Vermont .....	35.0	33.5	25.5	33.0	26.5	24.0
Virginia .....	200.0	220.0	230.0	200.0	220.0	230.0
Washington .....	5,550.0	5,420.0	6,500.0	5,550.0	5,420.0	6,500.0
West Virginia .....	64.0	67.0	91.0	61.0	65.0	90.0
Wisconsin .....	37.0	51.4	23.6	31.9	38.7	21.4
United States .....	9,291.6	9,425.0	9,061.1	9,213.0	9,318.0	8,996.6

See footnote(s) at end of table.

--continued

**Commercial Apple Bearing Acreage, Yield, Production, Price, and Value – States and United States: 2010-2012 (continued)**

State	Price per pound			Value of utilized production		
	2010 (dollars)	2011 (dollars)	2012 (dollars)	2010 (1,000 dollars)	2011 (1,000 dollars)	2012 (1,000 dollars)
Arizona .....	0.179	0.241	0.217	3,048	2,647	1,738
California .....	0.207	0.215	0.259	57,820	57,975	77,750
Colorado .....	0.216	0.293	0.304	3,020	2,340	4,860
Connecticut .....	0.539	0.539	0.654	11,853	10,507	10,130
Idaho .....	0.232	0.239	0.320	13,910	14,350	24,000
Illinois .....	0.617	0.575	0.557	26,548	18,989	13,928
Indiana .....	0.403	0.398	0.396	9,672	7,166	1,784
Iowa .....	0.719	0.663	0.675	2,228	2,187	135
Maine .....	0.461	0.474	0.560	13,371	10,676	15,388
Maryland .....	0.182	0.259	0.402	7,650	10,115	13,939
Massachusetts .....	0.570	0.603	0.623	19,366	21,690	17,123
Michigan .....	0.181	0.207	0.352	103,375	201,650	40,475
Minnesota .....	0.796	0.814	0.811	12,571	15,796	7,625
Missouri .....	0.301	0.313	0.471	9,635	4,379	15,554
New Hampshire .....	0.463	0.505	0.581	9,036	8,588	7,845
New Jersey .....	0.480	0.672	0.839	20,180	23,505	28,540
New York .....	0.175	0.202	0.352	221,620	244,000	249,790
North Carolina .....	0.185	0.192	0.313	24,793	26,863	10,016
Ohio .....	0.383	0.367	0.336	27,426	21,808	8,735
Oregon .....	0.224	0.221	0.250	26,855	19,861	32,018
Pennsylvania .....	0.158	0.182	0.281	74,896	79,739	133,595
Rhode Island .....	0.820	0.793	0.851	2,050	1,745	1,362
Tennessee .....	0.305	0.279	0.480	2,076	2,290	2,880
Utah .....	0.250	0.222	0.263	2,928	4,054	3,635
Vermont .....	0.309	0.304	0.434	10,210	8,044	10,405
Virginia .....	0.154	0.182	0.297	30,760	40,055	68,220
Washington .....	0.278	0.357	0.346	1,541,420	1,932,260	2,250,850
West Virginia .....	0.144	0.175	0.258	8,797	11,371	23,193
Wisconsin .....	0.516	0.485	0.626	16,474	18,751	13,402
United States .....	0.251	0.303	0.343	2,313,588	2,823,401	3,088,915

(D) Withheld to avoid disclosing data for individual operations.

<sup>1</sup> Yield is based on total production, which includes unharvested production and fruit harvested but not sold due to market conditions.



## Commercial Apple Fresh Market Utilization, Price, and Value – States and United States: 2010-2012

[Equivalent packinghouse door returns for California, Michigan, New York, and Washington; price at point of first sale for all other States. Blank cells indicate estimation period has not yet begun.]

State	Quantity			Price per pound		
	2010	2011	2012	2010	2011	2012
	(million pounds)	(million pounds)	(million pounds)	(dollars)	(dollars)	(dollars)
Arizona .....	2.0	1.0		0.849	0.780	
California .....	115.0	125.0		0.373	0.325	
Colorado .....	8.0	4.0		0.310	0.450	
Connecticut .....	18.5	17.5		0.620	0.590	
Idaho .....	40.0	35.0		0.315	0.335	
Illinois .....	(D)	(D)		(D)	(D)	
Indiana .....	19.0	13.0		0.484	0.507	
Iowa .....	(D)	(D)		(D)	(D)	
Maine .....	24.0	17.0		0.540	0.595	
Maryland .....	14.0	18.0		0.390	0.460	
Massachusetts .....	27.0	31.0		0.700	0.685	
Michigan .....	210.0	350.0		0.300	0.350	
Minnesota .....	(D)	(D)		(D)	(D)	
Missouri .....	22.0	9.0		0.405	0.406	
New Hampshire .....	14.5	13.0		0.600	0.630	
New Jersey .....	30.0	25.0		0.640	0.907	
New York .....	560.0	530.0		0.263	0.333	
North Carolina .....	56.0	59.0		0.276	0.308	
Ohio .....	56.2	43.4		0.460	0.460	
Oregon .....	85.0	75.0		0.290	0.244	
Pennsylvania .....	190.0	184.0		0.258	0.290	
Rhode Island .....	(D)	(D)		(D)	(D)	
Tennessee .....	(D)	(D)		(D)	(D)	
Utah .....	11.3	17.5		0.257	0.228	
Vermont .....	27.0	16.0		0.360	0.445	
Virginia .....	70.0	60.0		0.267	0.364	
Washington .....	4,550.0	4,550.0		0.321	0.402	
West Virginia .....	14.0	19.0		0.319	0.365	
Wisconsin .....	28.2	32.5		0.574	0.563	
Other States <sup>1</sup> .....	65.1	57.2		0.688	0.699	
United States .....	6,256.8	6,302.1		0.326	0.394	

See footnote(s) at end of table.

--continued

**Commercial Apple Fresh Market Utilization, Price, and Value – States and United States:  
2010-2012 (continued)**

[Equivalent packinghouse door returns for California, Michigan, New York, and Washington; price at point of first sale for all other States. Blank cells indicate estimation period has not yet begun.]

State	Value of production		
	2010	2011	2012
	(1,000 dollars)	(1,000 dollars)	(1,000 dollars)
Arizona .....	1,698	780	
California .....	42,895	40,625	
Colorado .....	2,480	1,800	
Connecticut .....	11,470	10,325	
Idaho .....	12,600	11,725	
Illinois .....	(D)	(D)	
Indiana .....	9,196	6,591	
Iowa .....	(D)	(D)	
Maine .....	12,960	10,115	
Maryland .....	5,460	8,280	
Massachusetts .....	18,900	21,235	
Michigan .....	63,000	122,500	
Minnesota .....	(D)	(D)	
Missouri .....	8,910	3,654	
New Hampshire .....	8,700	8,190	
New Jersey .....	19,200	22,675	
New York .....	147,280	176,490	
North Carolina .....	15,456	18,172	
Ohio .....	25,852	19,964	
Oregon .....	24,650	18,300	
Pennsylvania .....	49,020	53,360	
Rhode Island .....	(D)	(D)	
Tennessee .....	(D)	(D)	
Utah .....	2,904	3,990	
Vermont .....	9,720	7,120	
Virginia .....	18,690	21,840	
Washington .....	1,460,550	1,829,100	
West Virginia .....	4,466	6,935	
Wisconsin .....	16,187	18,298	
Other States <sup>1</sup> .....	44,803	39,967	
United States .....	2,037,047	2,482,031	

(D) Withheld to avoid disclosing data for individual operations.

<sup>1</sup> Includes data withheld above and/or data for States not listed in this table.

## Commercial Apple Processed Utilization, Price, and Value – States and United States: 2010-2012

[Blank cells indicate estimation period has not yet begun]

State	Quantity			Price per ton		
	2010	2011	2012	2010	2011	2012
	(million pounds)	(million pounds)	(million pounds)	(dollars)	(dollars)	(dollars)
Arizona .....	15.0	10.0		180.00	373.00	
California .....	165.0	145.0		181.00	239.00	
Colorado .....	6.0	4.0		180.00	270.00	
Connecticut .....	3.5	2.0		219.00	182.00	
Idaho .....	20.0	25.0		131.00	210.00	
Illinois .....	(D)	(D)		(D)	(D)	
Indiana .....	5.0	5.0		190.00	230.00	
Iowa .....	(D)	(D)		(D)	(D)	
Maine .....	5.0	5.5		164.00	204.00	
Maryland .....	28.0	21.0		156.00	175.00	
Massachusetts .....	7.0	5.0		133.00	182.00	
Michigan .....	360.0	625.0		224.00	253.00	
Minnesota .....	(D)	(D)		(D)	(D)	
Missouri .....	10.0	5.0		145.00	290.00	
New Hampshire .....	5.0	4.0		134.00	199.00	
New Jersey .....	12.0	10.0		163.00	166.00	
New York .....	710.0	680.0		209.00	199.00	
North Carolina .....	78.0	81.0		239.00	215.00	
Ohio .....	15.5	16.0		203.00	231.00	
Oregon .....	35.0	15.0		126.00	208.00	
Pennsylvania .....	283.0	255.0		183.00	207.00	
Rhode Island .....	(D)	(D)		(D)	(D)	
Tennessee .....	(D)	(D)		(D)	(D)	
Utah .....	0.4	0.8		120.00	160.00	
Vermont .....	6.0	10.5		163.00	176.00	
Virginia .....	130.0	160.0		186.00	228.00	
Washington .....	1,000.0	870.0		162.00	237.00	
West Virginia .....	47.0	46.0		184.00	193.00	
Wisconsin .....	3.7	6.2		155.00	146.00	
Other States <sup>1</sup> .....	6.1	8.9		220.00	234.00	
United States .....	2,956.2	3,015.9		187.00	226.00	

See footnote(s) at end of table.

--continued

**Commercial Apple Processed Utilization, Price, and Value – States and United States:  
2010-2012 (continued)**

[Blank cells indicate estimation period has not yet begun]

State	Value of production		
	2010	2011	2012
	(1,000 dollars)	(1,000 dollars)	(1,000 dollars)
Arizona .....	1,350	1,867	
California .....	14,925	17,350	
Colorado .....	540	540	
Connecticut .....	383	182	
Idaho .....	1,310	2,625	
Illinois .....	(D)	(D)	
Indiana .....	476	575	
Iowa .....	(D)	(D)	
Maine .....	411	561	
Maryland .....	2,190	1,835	
Massachusetts .....	466	455	
Michigan .....	40,375	79,150	
Minnesota .....	(D)	(D)	
Missouri .....	725	725	
New Hampshire .....	336	398	
New Jersey .....	980	830	
New York .....	74,340	67,510	
North Carolina .....	9,337	8,691	
Ohio .....	1,574	1,844	
Oregon .....	2,205	1,561	
Pennsylvania .....	25,876	26,379	
Rhode Island .....	(D)	(D)	
Tennessee .....	(D)	(D)	
Utah .....	24	64	
Vermont .....	490	924	
Virginia .....	12,070	18,215	
Washington .....	80,870	103,160	
West Virginia .....	4,331	4,436	
Wisconsin .....	287	453	
Other States <sup>1</sup> .....	670	1,040	
United States .....	276,541	341,370	

(D) Withheld to avoid disclosing data for individual operations.

<sup>1</sup> Includes data withheld above and/or data for States not listed in this table.

## Commercial Apple Processed Utilization and Price by Use – States and United States: 2010-2012

[Blank cells indicate estimation period has not yet begun]

Use and State	Quantity			Price per ton		
	2010	2011	2012	2010	2011	2012
	(million pounds)	(million pounds)	(million pounds)	(dollars)	(dollars)	(dollars)
<b>Canned</b>						
California .....	(D)	(D)		(D)	(D)	
Maryland .....	12.0	11.0		198.00	198.00	
Michigan .....	160.0	245.0		240.00	260.00	
New York .....	345.0	330.0		214.00	212.00	
North Carolina .....	50.7	54.3		250.00	220.00	
Pennsylvania .....	182.0	177.0		200.00	225.00	
Virginia .....	100.0	130.0		200.00	221.00	
Washington .....	180.0	130.0		169.00	241.00	
West Virginia .....	32.0	29.0		201.00	213.00	
Other States <sup>1</sup> .....	26.6	17.4		179.00	233.00	
United States .....	1,088.3	1,123.7		207.00	230.00	
<b>Juice and cider</b>						
California .....	(D)	(D)		(D)	(D)	
Maryland .....	15.0	9.0		129.00	157.00	
Michigan .....	80.0	135.0		180.00	190.00	
New York .....	260.0	270.0		168.00	170.00	
North Carolina .....	21.0	23.5		160.00	200.00	
Ohio .....	(D)	(D)		(D)	(D)	
Oregon .....	18.0	6.0		105.00	170.00	
Pennsylvania .....	92.0	68.0		151.00	160.00	
Virginia .....	30.0	(D)		138.00	(D)	
Washington .....	500.0	470.0		126.00	210.00	
West Virginia .....	13.0	16.0		143.00	161.00	
Other States <sup>1</sup> .....	236.9	210.9		171.00	229.00	
United States .....	1,265.9	1,208.4		149.00	198.00	
<b>Frozen</b>						
United States .....	206.0	190.5		198.00	246.00	
<b>Dried</b>						
United States .....	175.5	183.5		143.00	214.00	
<b>Fresh slices</b>						
United States .....	146.4	238.4		377.00	357.00	
<b>Other <sup>2</sup></b>						
Maryland .....	1.0	1.0		68.00	78.00	
Michigan .....	5.0	(D)		280.00	(D)	
New York .....	(D)	(D)		(D)	(D)	
Other States <sup>1</sup> .....	66.5	70.0		246.00	203.00	
United States .....	74.1	71.0		241.00	201.00	

(D) Withheld to avoid disclosing data for individual operations.

<sup>1</sup> Includes data withheld above and/or data for States not listed in this table.

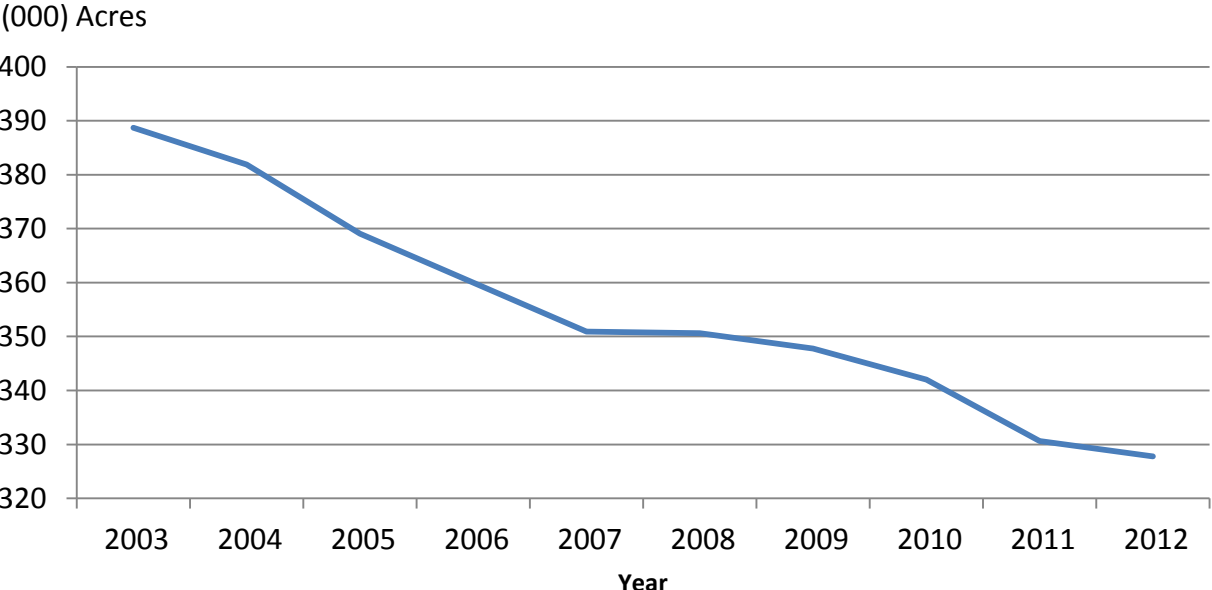
<sup>2</sup> Includes vinegar, wine, and slices for pie making.

## Unutilized Apple Production – States and United States: 2010-2012

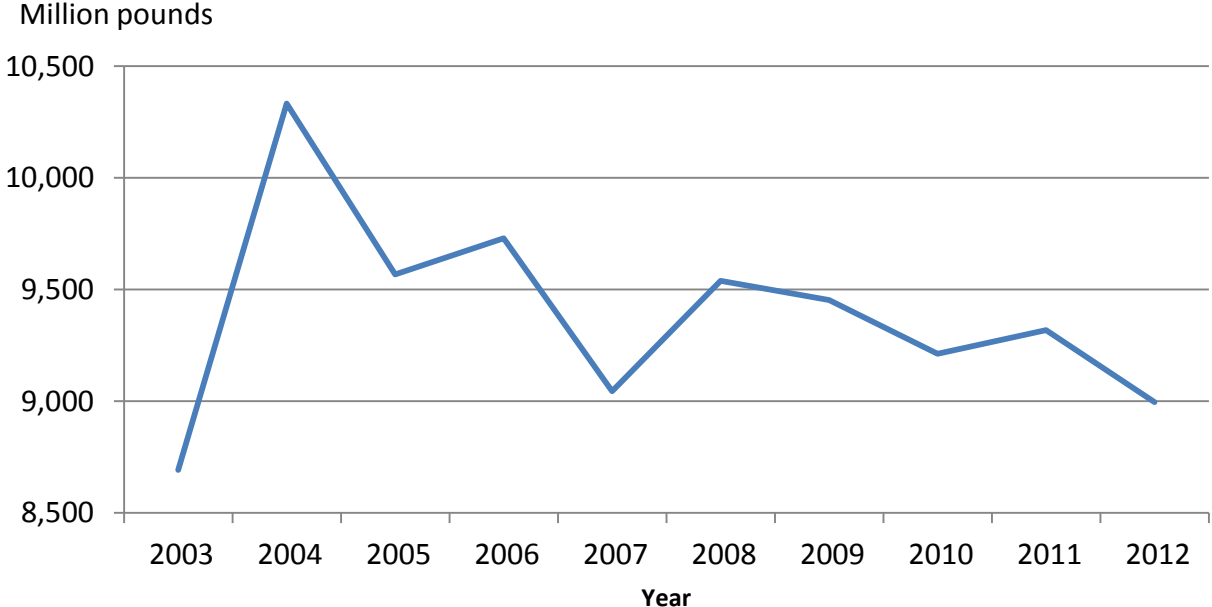
State	Unharvested production			Harvested not sold		
	2010	2011	2012	2010	2011	2012
	(million pounds)	(million pounds)	(million pounds)	(million pounds)	(million pounds)	(million pounds)
California .....	-	10.0	-	-	-	-
Colorado .....	-	1.0	1.0	-	-	-
Connecticut .....	1.0	2.0	1.0	-	0.5	-
Illinois .....	6.0	5.0	5.0	3.0	2.0	2.0
Indiana .....	1.0	1.0	-	1.0	1.0	-
Iowa .....	0.6	0.5	0.5	0.1	0.2	-
Maine .....	2.0	1.5	1.5	-	5.0	1.0
Maryland .....	0.3	0.3	-	0.2	0.7	0.3
Massachusetts .....	3.0	2.0	0.5	-	0.5	-
Michigan .....	-	5.0	-	-	-	-
Minnesota .....	2.7	3.1	1.3	0.5	1.0	0.5
Missouri .....	0.8	0.7	1.4	0.2	0.3	0.6
New Hampshire .....	1.5	1.0	2.0	-	-	-
New Jersey .....	1.0	1.0	1.0	-	-	-
New York .....	10.0	10.0	10.0	-	-	-
North Carolina .....	2.0	-	1.5	-	-	-
Ohio .....	9.2	3.1	0.4	2.3	4.1	6.6
Oregon .....	-	2.0	1.5	-	0.5	0.5
Pennsylvania .....	11.0	9.0	8.0	8.0	10.0	11.0
Rhode Island .....	0.1	0.3	0.1	-	-	-
Tennessee .....	0.5	0.3	0.2	0.2	-	0.2
Utah .....	0.3	0.4	0.1	-	0.3	0.1
Vermont .....	2.0	6.5	1.5	-	0.5	-
West Virginia .....	2.0	1.0	1.0	1.0	1.0	-
Wisconsin .....	3.0	10.4	1.7	2.1	2.3	0.5
United States .....	60.0	77.1	41.2	18.6	29.9	23.3

- Represents zero.

# Commercial Apple Bearing Acreage United States: 2003-2012



# Commercial Apple Utilized Production United States: 2003-2012



**Other Fruit Bearing Acreage, Yield, Production, Utilization, Price, and Value by Crop – States and United States: 2010-2012**

[Blank cells indicate estimation period has not yet begun]

Crop, State, and season	Bearing acreage	Yield per acre <sup>1</sup>	Production		Utilization	
			Total	Utilized	Fresh	Processed
	(acres)	(tons)	(tons)	(tons)	(tons)	(tons)
<b>Apricots</b>						
California						
2010 .....	10,800	5.57	60,200	60,200	18,500	41,700
2011 .....	10,800	5.79	62,550	62,550	20,500	42,050
2012 .....	10,800	4.98	53,800	53,800	17,000	36,800
Utah						
2010 .....	(D)	(D)	280	250	(D)	(D)
2011 .....	(D)	(D)	200	170	(D)	(D)
2012 .....	(D)	(D)	300	270	(D)	(D)
Washington						
2010 .....	(D)	(D)	5,900	5,900	(D)	(D)
2011 .....	(D)	(D)	3,900	3,900	(D)	(D)
2012 .....	(D)	(D)	6,700	6,700	(D)	(D)
United States						
2010 .....	12,150	5.46	66,380	66,350	23,510	42,840
2011 .....	12,150	5.49	66,650	66,620	23,990	42,630
2012 .....	12,150	5.00	60,800	60,770	23,130	37,640
<b>Avocados<sup>2</sup></b>						
California						
2010-2011 .....	52,200	2.90	151,500	151,500	151,500	(NA)
2011-2012 .....	52,200	4.43	231,500	231,500	231,500	(NA)
2012-2013 .....						
Florida						
2010-2011 .....	7,400	3.04	22,500	22,500	22,500	(NA)
2011-2012 .....	7,400	4.20	31,100	31,100	31,100	(NA)
2012-2013 .....						
Hawaii						
2010-2011 .....	330	1.00	330	330	330	(NA)
2011-2012 .....	350	1.00	350	350	350	(NA)
2012-2013 .....						
United States						
2010-2011 .....	59,930	2.91	174,330	174,330	174,330	(NA)
2011-2012 .....	59,950	4.39	262,950	262,950	262,950	(NA)
2012-2013 .....						
<b>Dates</b>						
California						
2010 .....	7,700	3.77	29,000	29,000	29,000	(NA)
2011 .....	8,400	3.96	33,300	33,300	33,300	(NA)
2012 .....	8,400	3.70	31,100	31,100	31,100	(NA)

See footnote(s) at end of table.

--continued



**Other Fruit Bearing Acreage, Yield, Production, Utilization, Price, and Value by Crop – States and United States: 2010-2012 (continued)**

[Blank cells indicate estimation period has not yet begun]

Crop, State, and season	Price per ton			Value of production		
	Fresh (dollars)	Processed (dollars)	All (dollars)	Fresh (1,000 dollars)	Processed (1,000 dollars)	Total (1,000 dollars)
<b>Apricots</b> <sup>3</sup>						
California						
2010 .....	1,350.00	381.00	679.00	24,975	15,885	40,860
2011 .....	875.00	375.00	539.00	17,938	15,767	33,705
2012 .....	1,050.00	392.00	600.00	17,850	14,410	32,260
Utah						
2010 .....	(D)	(D)	432.00	(D)	(D)	108
2011 .....	(D)	(D)	1,290.00	(D)	(D)	219
2012 .....	(D)	(D)	919.00	(D)	(D)	248
Washington						
2010 .....	(D)	(D)	1,170.00	(D)	(D)	6,908
2011 .....	(D)	(D)	1,830.00	(D)	(D)	7,132
2012 .....	(D)	(D)	1,250.00	(D)	(D)	8,371
United States						
2010 .....	1,350.00	376.00	722.00	31,789	16,087	47,876
2011 .....	1,050.00	372.00	616.00	25,198	15,858	41,056
2012 .....	1,140.00	387.00	673.00	26,319	14,560	40,879
<b>Avocados</b> <sup>2</sup>						
California						
2010-2011 .....	3,040.00	(X)	3,040.00	460,560	(X)	460,560
2011-2012 .....	1,650.00	(X)	1,650.00	381,975	(X)	381,975
2012-2013 .....						
Florida						
2010-2011 .....	800.00	(X)	800.00	18,000	(X)	18,000
2011-2012 .....	756.00	(X)	756.00	23,512	(X)	23,512
2012-2013 .....						
Hawaii						
2010-2011 .....	1,540.00	(X)	1,540.00	508	(X)	508
2011-2012 .....	1,600.00	(X)	1,600.00	560	(X)	560
2012-2013 .....						
United States						
2010-2011 .....	2,750.00	(X)	2,750.00	479,068	(X)	479,068
2011-2012 .....	1,540.00	(X)	1,540.00	406,047	(X)	406,047
2012-2013 .....						
<b>Dates</b>						
California						
2010 .....	1,270.00	(X)	1,270.00	36,830	(X)	36,830
2011 .....	1,320.00	(X)	1,320.00	43,956	(X)	43,956
2012 .....	1,340.00	(X)	1,340.00	41,674	(X)	41,674

See footnote(s) at end of table.

--continued

**Other Fruit Bearing Acreage, Yield, Production, Utilization, Price, and Value by Crop – States and United States: 2010-2012 (continued)**

Crop, State, and season	Bearing acreage	Yield per acre <sup>1</sup>	Production		Utilization	
			Total	Utilized	Fresh	Processed
	(acres)	(tons)	(tons)	(tons)	(tons)	(tons)
<b>Figs <sup>4</sup></b>						
California						
2010 .....	8,600	4.76	40,910	40,910	3,960	36,950
2011 .....	8,600	4.50	38,660	38,660	3,960	34,700
2012 .....	8,600	4.50	38,660	38,660	3,960	34,700
<b>Kiwifruit</b>						
California						
2010 .....	4,200	7.79	32,700	32,500	29,800	2,700
2011 .....	4,200	8.98	37,700	36,700	33,300	3,400
2012 .....	4,200	7.05	29,600	27,100	26,600	500
<b>Nectarines <sup>5</sup></b>						
California						
2010 .....	28,000	8.04	225,000	225,000	225,000	(NA)
2011 .....	26,500	8.15	216,000	216,000	216,000	(NA)
2012 .....	25,000	7.20	180,000	180,000	180,000	(NA)
Washington						
2010 .....	1,300	6.31	8,200	8,200	8,200	(NA)
2011 .....	1,400	6.57	9,200	9,200	9,200	(NA)
2012 .....	1,400	6.36	8,900	8,900	8,900	(NA)
United States						
2010 .....	29,300	7.96	233,200	233,200	233,200	(NA)
2011 .....	27,900	8.07	225,200	225,200	225,200	(NA)
2012 .....	26,400	7.16	188,900	188,900	188,900	(NA)
<b>Olives</b>						
California						
2010 .....	36,000	5.72	206,000	206,000	(NA)	206,000
2011 .....	41,500	1.72	71,200	71,200	(NA)	71,200
2012 .....	44,000	3.64	160,000	160,000	(NA)	160,000
<b>Plums</b>						
California						
2010 .....	26,200	5.39	141,300	141,300	(D)	(D)
2011 .....	25,500	6.27	160,000	160,000	(D)	(D)
2012 .....	25,000	4.60	115,000	115,000	(D)	(D)

See footnote(s) at end of table.

--continued

**Other Fruit Bearing Acreage, Yield, Production, Utilization, Price, and Value by Crop – States and United States: 2010-2012 (continued)**

[Blank cells indicate estimation period has not yet begun]

Crop, State, and season	Price per ton			Value of production		
	Fresh (dollars)	Processed (dollars)	All (dollars)	Fresh (1,000 dollars)	Processed (1,000 dollars)	Total (1,000 dollars)
<b>Figs</b>						
California						
2010 .....	(D)	(D)	542.00	(D)	(D)	22,185
2011 .....	(D)	(D)	526.00	(D)	(D)	20,336
2012 .....						
<b>Kiwifruit</b>						
California						
2010 .....	(D)	(D)	768.00	(D)	(D)	24,961
2011 .....	(D)	(D)	775.00	(D)	(D)	28,439
2012 .....						
<b>Nectarines <sup>5</sup></b>						
California						
2010 .....	560.00	(X)	560.00	126,000	(X)	126,000
2011 .....	590.00	(X)	590.00	127,440	(X)	127,440
2012 .....	777.00	(X)	777.00	139,860	(X)	139,860
Washington						
2010 .....	375.00	(X)	375.00	3,075	(X)	3,075
2011 .....	384.00	(X)	384.00	3,533	(X)	3,533
2012 .....	567.00	(X)	567.00	5,046	(X)	5,046
United States						
2010 .....	553.00	(X)	553.00	129,075	(X)	129,075
2011 .....	582.00	(X)	582.00	130,973	(X)	130,973
2012 .....	767.00	(X)	767.00	144,906	(X)	144,906
<b>Olives</b>						
California						
2010 .....	(X)	664.00	664.00	(X)	136,796	136,796
2011 .....	(X)	733.00	733.00	(X)	52,168	52,168
2012 .....	(X)	813.00	813.00	(X)	130,038	130,038
<b>Plums</b>						
California						
2010 .....	(D)	(D)	555.00	(D)	(D)	78,422
2011 .....	(D)	(D)	402.00	(D)	(D)	64,320
2012 .....	(D)	(D)	695.00	(D)	(D)	79,940

See footnote(s) at end of table.

--continued

**Other Fruit Bearing Acreage, Yield, Production, Utilization, Price, and Value by Crop – States and United States: 2010-2012 (continued)**

Crop, State, and season	Bearing acreage	Yield per acre <sup>1</sup>	Production		Utilization	
			Total	Utilized	Fresh	Processed
	(acres)	(tons)	(tons)	(tons)	(tons)	(tons)
<b>Prunes and plums</b>						
Idaho						
2010 .....	510	5.29	2,700	2,600	(D)	(D)
2011 .....	510	5.49	2,800	2,500	(D)	(D)
2012 .....	480	5.63	2,700	2,300	(D)	(D)
Michigan						
2010 .....	550	3.64	2,000	1,500	1,000	500
2011 .....	500	3.20	1,600	1,600	(D)	(D)
2012 .....	500	0.13	65	65	(D)	(D)
Oregon						
2010 .....	1,400	3.07	4,300	4,000	2,800	1,200
2011 .....	1,300	3.77	4,900	4,800	1,700	3,100
2012 .....	1,300	5.52	7,170	6,470	3,220	3,250
Washington						
2010 .....	600	5.17	3,100	3,100	(D)	(D)
2011 .....	500	8.00	4,000	4,000	(D)	(D)
2012 .....	500	6.60	3,300	3,300	(D)	(D)
4-State total						
2010 .....	3,060	3.95	12,100	11,200	7,700	3,500
2011 .....	2,810	4.73	13,300	12,900	7,030	5,870
2012 .....	2,780	4.76	13,235	12,135	7,330	4,805
<b>Prunes (dried basis)</b>						
California						
2010 .....	61,000	2.13	130,000	130,000	-	130,000
2011 .....	58,000	2.36	137,000	137,000	-	137,000
2012 .....	55,000	2.27	125,000	125,000	-	125,000

See footnote(s) at end of table.

--continued

**Other Fruit Bearing Acreage, Yield, Production, Utilization, Price, and Value by Crop – States and United States: 2010-2012 (continued)**

Crop, State, and season	Price per ton			Value of production		
	Fresh (dollars)	Processed (dollars)	All (dollars)	Fresh (1,000 dollars)	Processed (1,000 dollars)	Total (1,000 dollars)
<b>Prunes and plums</b>						
Idaho						
2010 .....	(D)	(D)	378.00	(D)	(D)	983
2011 .....	(D)	(D)	354.00	(D)	(D)	886
2012 .....	(D)	(D)	700.00	(D)	(D)	1,609
Michigan						
2010 .....	870.00	180.00	640.00	870	90	960
2011 .....	(D)	(D)	700.00	(D)	(D)	1,120
2012 .....	(D)	(D)	585.00	(D)	(D)	38
Oregon						
2010 .....	498.00	266.00	428.00	1,394	319	1,713
2011 .....	441.00	310.00	356.00	750	960	1,710
2012 .....	813.00	265.00	538.00	2,618	860	3,478
Washington						
2010 .....	(D)	(D)	406.00	(D)	(D)	1,259
2011 .....	(D)	(D)	263.00	(D)	(D)	1,051
2012 .....	(D)	(D)	432.00	(D)	(D)	1,427
4-State total						
2010 .....	551.00	193.00	439.00	4,240	675	4,915
2011 .....	482.00	235.00	370.00	3,389	1,378	4,767
2012 .....	745.00	228.00	540.00	5,458	1,094	6,552
<b>Prunes (dried basis)</b>						
California						
2010 .....	(X)	1,350.00	1,350.00	(X)	175,500	175,500
2011 .....	(X)	1,310.00	1,310.00	(X)	179,470	179,470
2012 .....	(X)	1,250.00	1,250.00	(X)	156,250	156,250

(D) Withheld to avoid disclosing data for individual operations.

(X) Not applicable.

<sup>1</sup> Yield is based on total production.

<sup>2</sup> Estimates for 2012-2013 will be published on July 17, 2013.

<sup>3</sup> Apricot processed price excludes dried. Processing value includes dried.

<sup>4</sup> Small quantities of canned figs are included in fresh to avoid disclosure of individual operations.

<sup>5</sup> Small quantities of processed nectarines are included in fresh to avoid disclosure of individual operations.

## Other Unutilized Fruit Production by Crop – States and United States: 2010-2012

Crop and State	Unharvested production			Harvested not sold		
	2010	2011	2012	2010	2011	2012
<b>Apricots</b>						
Utah .....	10	20	10	20	10	20
<b>Kiwifruit</b>						
California .....	-	-	-	200	1,000	2,500
<b>Prunes and plums</b>						
Idaho .....	-	300	400	100	-	-
Michigan .....	470	-	-	30	-	-
Oregon .....	150	100	700	150	-	-
United States .....	620	400	1,100	280	-	-

- Represents zero.

## Other Processed Fruit Utilization and Price by Crop and Use – States and United States: 2010-2012

[Blank cells indicate estimation period has not yet begun]

Crop, use, and State	Quantity			Price per ton		
	2010	2011	2012	2010	2011	2012
	(tons)	(tons)	(tons)	(dollars)	(dollars)	(dollars)
<b>Apricots (California)</b>						
Canned .....	20,100	17,150	16,500	390.00	330.00	419.00
Dried, fresh basis .....	10,000	12,000	9,500	400.00	410.00	315.00
<b>Figs (California)</b>						
Dried, fresh basis .....	36,950	34,700	34,700	406.00	411.00	
<b>Olives (California)</b>						
Canned .....	125,000	26,500	78,500	862.00	1,060.00	1,110.00
Crushed for Oil .....	36,000	42,000	74,000	532.00	556.00	550.00
Limited .....	37,000	2,200	6,400	270.00	333.00	346.00
Undersized .....	8,000	500	1,100	-12.00	-13.00	-10.00
<b>Prunes and plums<sup>1</sup></b>						
Canned .....	1,395	1,460	755	209.00	203.00	234.00
Frozen .....	455	560	550	251.00	280.00	265.00
Dried and Other .....	1,650	3,850	3,500	163.00	240.00	220.00

<sup>1</sup> Idaho, Michigan, Oregon, and Washington.

## Olive Production by Variety – California: 2010-2012

Variety	2010	2011	2012
	(tons)	(tons)	(tons)
Manzanillo .....	148,000	23,000	71,200
Sevillano .....	27,000	7,500	22,900
All other <sup>1</sup> .....	31,000	40,700	65,900
Total .....	206,000	71,200	160,000

<sup>1</sup> Includes production for varieties that were or will be used for canned, oil, and other specialty products.

## Dry Fruit Production and Price by Use – California: 2010-2012

[Blank cells indicate estimation period has not yet begun]

Crop	Quantity			Price per ton		
	2010	2011	2012	2010	2011	2012
	(tons)	(tons)	(tons)	(dollars)	(dollars)	(dollars)
<b>Fresh basis</b>						
Apricots .....	10,000	12,000	9,500	400.00	410.00	315.00
Figs .....	36,950	34,700	34,700	406.00	411.00	
Grapes						
Raisin .....	1,719,000	1,761,000	1,508,000	336.00	353.00	413.00
Table .....	58,000	46,000	56,000	289.00	306.00	358.00
Peaches						
Freestone .....	12,700	4,600	9,800	44.00	42.00	41.00
Prunes .....	390,000	444,000	395,000	450.00	404.00	396.00
<b>Dried basis</b>						
Apricots .....	1,400	1,810	1,210	2,860.00	2,720.00	2,470.00
Figs .....	12,320	11,560	11,560	1,220.00	1,230.00	
Standard .....	10,900	10,140	10,140	1,370.00	1,400.00	
Substandard .....	1,420	1,420	1,420	60.00	60.00	
Grapes						
Raisin <sup>1</sup> .....	382,000	374,600	320,900	1,510.00	1,660.00	1,940.00
Table .....	12,800	9,700	11,800	1,310.00	1,450.00	1,700.00
Peaches						
Freestone .....	2,010	470	1,230	278.00	411.00	327.00
Prunes .....	130,000	137,000	125,000	1,350.00	1,310.00	1,250.00

<sup>1</sup> Includes substandard raisins diverted to other uses.

## Fresh Basis Equivalents for Selected Dry Fruits – California: 2010-2012

[Based on 1 ton dry basis equivalent]

Crop	2010	2011	2012
	(tons)	(tons)	(tons)
<b>Apricots</b> .....	7.14	6.63	7.85
<b>Figs</b> .....	3.00	3.00	3.00
<b>Grapes</b>			
Raisin .....	4.50	4.70	4.70
Table .....	4.53	4.74	4.75
<b>Peaches</b>			
Freestone .....	6.32	9.79	7.97
<b>Prunes</b> .....	3.00	3.24	3.16

**Strawberry Area Planted, Harvested, Yield, Production, Price, and Value – States and United States: 2010-2012**

State	Area planted			Area harvested		
	2010	2011	2012	2010	2011	2012
	(acres)	(acres)	(acres)	(acres)	(acres)	(acres)
California .....	38,600	38,000	38,500	38,600	38,000	38,500
Florida .....	8,800	9,900	8,900	8,800	9,900	8,700
Michigan .....	950	850	750	750	700	650
New York .....	1,600	1,600	1,600	1,400	1,400	1,400
North Carolina .....	1,600	1,600	1,600	1,500	1,500	1,500
Ohio .....	1,100	1,100	740	730	730	660
Oregon .....	2,100	2,200	2,200	1,900	2,000	2,000
Pennsylvania .....	1,100	990	920	1,100	990	820
Washington .....	1,500	1,500	1,500	1,500	1,500	1,300
Wisconsin .....	820	820	720	710	700	610
United States .....	58,170	58,560	57,430	56,990	57,420	56,140

State	Yield per acre			Production		
	2010	2011	2012	2010	2011	2012
	(cwt)	(cwt)	(cwt)	(1,000 cwt)	(1,000 cwt)	(1,000 cwt)
California .....	670	680	720	25,859	25,846	27,637
Florida .....	220	250	210	1,936	2,475	1,827
Michigan .....	39	44	51	29	31	33
New York .....	25	26	23	35	36	32
North Carolina .....	120	130	135	180	195	203
Ohio .....	48	36	42	35	26	28
Oregon .....	125	115	105	236	226	213
Pennsylvania .....	51	40	51	56	40	42
Washington .....	83	83	79	125	125	103
Wisconsin .....	58	57	51	41	40	31
United States .....	501	506	537	28,532	29,040	30,149

State	Price per cwt			Value of production		
	2010	2011	2012	2010	2011	2012
	(dollars)	(dollars)	(dollars)	(1,000 dollars)	(1,000 dollars)	(1,000 dollars)
California .....	70.10	75.20	76.80	1,813,557	1,943,757	2,121,574
Florida .....	187.00	148.00	110.00	362,032	366,300	200,970
Michigan .....	141.00	146.00	146.00	4,089	4,522	4,826
New York .....	197.00	235.00	215.00	6,895	8,460	6,880
North Carolina .....	135.00	140.00	145.00	24,300	27,300	29,435
Ohio .....	272.00	210.00	168.00	9,520	5,460	4,704
Oregon .....	69.00	66.50	71.30	16,291	15,034	15,189
Pennsylvania .....	207.00	212.00	164.00	11,592	8,480	6,888
Washington .....	61.10	71.80	100.00	7,640	8,971	10,331
Wisconsin .....	157.00	161.00	151.00	6,437	6,440	4,681
United States .....	79.30	82.50	79.80	2,262,353	2,394,724	2,405,478



## Strawberry Utilization, Price, and Value by Utilization – States and United States: 2010-2012

Utilization and State	Production					
	2010	2011	2012			
	(1,000 cwt)	(1,000 cwt)	(1,000 cwt)			
<b>Fresh market</b>						
California .....	20,851	20,462	21,936			
Florida .....	1,936	2,475	1,827			
Michigan .....	27	29	32			
New York .....	35	36	32			
North Carolina .....	180	195	203			
Ohio .....	35	26	28			
Oregon .....	37	28	35			
Pennsylvania .....	56	40	42			
Washington .....	10	17	24			
Wisconsin .....	41	40	31			
United States .....	23,208	23,348	24,190			
<b>Processing</b>						
California .....	5,008	5,384	5,701			
Michigan .....	2	2	1			
Oregon .....	199	198	178			
Washington .....	115	108	79			
United States .....	5,324	5,692	5,959			
Utilization and State	Price per unit			Value of production		
	2010	2011	2012	2010	2011	2012
	(dollars per cwt)	(dollars per cwt)	(dollars per cwt)	(1,000 dollars)	(1,000 dollars)	(1,000 dollars)
<b>Fresh market</b>						
California .....	80.30	86.10	88.40	1,674,335	1,761,778	1,939,142
Florida .....	187.00	148.00	110.00	362,032	366,300	200,970
Michigan .....	147.00	152.00	149.00	3,969	4,408	4,768
New York .....	197.00	235.00	215.00	6,895	8,460	6,880
North Carolina .....	135.00	140.00	145.00	24,300	27,300	29,435
Ohio .....	272.00	210.00	168.00	9,520	5,460	4,704
Oregon .....	166.00	148.00	139.00	6,142	4,144	4,865
Pennsylvania .....	207.00	212.00	164.00	11,592	8,480	6,888
Washington .....	189.00	231.00	177.00	1,890	3,927	4,248
Wisconsin .....	157.00	161.00	151.00	6,437	6,440	4,681
United States .....	90.80	94.10	91.20	2,107,112	2,196,697	2,206,581
<b>Processing</b>						
California .....	27.80	33.80	32.00	139,222	181,979	182,432
Michigan .....	60.00	57.00	58.00	120	114	58
Oregon .....	51.00	55.00	58.00	10,149	10,890	10,324
Washington .....	50.00	46.70	77.00	5,750	5,044	6,083
United States .....	29.20	34.80	33.40	155,241	198,027	198,897

**Berry Area Harvested, Yield, Production, Utilization, Price, and Value by Crop – States and United States: 2010-2012**

Crop, State, and year	Area harvested (acres)	Yield per acre <sup>1</sup> (pounds)	Production		Utilization		
			Total (1,000 pounds)	Utilized (1,000 pounds)	Fresh (1,000 pounds)	Processed (1,000 pounds)	
<b>Cultivated blueberries</b>							
<b>Alabama <sup>2</sup></b>							
2010 .....	340	1,260	550	430	430	-	
2011 .....	400	1,250	700	500	500	-	
2012 .....	450	1,560	850	700	700	-	
<b>Arkansas <sup>2</sup></b>							
2010 .....	300	2,170	740	650	650	-	
2011 .....	250	1,600	500	400	400	-	
2012 .....	250	1,600	500	400	400	-	
<b>California <sup>2</sup></b>							
2010 .....	3,900	7,180	28,000	28,000	28,000	-	
2011 .....	4,300	9,790	42,100	42,100	42,100	-	
2012 .....	4,700	8,700	40,900	40,900	40,900	-	
<b>Florida <sup>2</sup></b>							
2010 .....	3,500	4,690	17,670	16,400	16,400	-	
2011 .....	3,800	5,630	23,400	21,400	21,400	-	
2012 .....	4,500	3,800	18,100	17,100	17,100	-	
<b>Georgia</b>							
2010 .....	13,000	4,460	62,000	58,000	36,000	22,000	
2011 .....	12,000	5,170	65,000	62,000	39,000	23,000	
2012 .....	15,000	4,670	77,000	70,000	37,000	33,000	
<b>Indiana</b>							
2010 .....	670	5,370	3,600	3,600	2,000	1,600	
2011 .....	650	2,460	1,600	1,600	1,300	300	
2012 .....	400	3,750	1,500	1,500	1,000	500	
<b>Michigan</b>							
2010 .....	18,600	5,860	109,000	109,000	49,000	60,000	
2011 .....	19,200	3,750	72,000	72,000	34,000	38,000	
2012 .....	19,700	4,420	87,000	87,000	33,000	54,000	
<b>Mississippi</b>							
2010 .....	2,700	2,960	8,000	8,000	3,000	5,000	
2011 .....	2,700	3,890	10,500	10,500	4,000	6,500	
2012 .....	2,700	3,330	9,000	9,000	3,500	5,500	
<b>New Jersey</b>							
2010 .....	7,500	6,530	49,000	49,000	42,000	7,000	
2011 .....	7,700	8,050	62,000	62,000	47,000	15,000	
2012 .....	7,500	6,870	54,000	51,500	43,000	8,500	
<b>New York <sup>2</sup></b>							
2010 .....	900	2,330	2,300	2,100	2,100	-	
2011 .....	900	2,000	1,900	1,800	1,800	-	
2012 .....	900	1,890	2,000	1,700	1,700	-	
<b>North Carolina</b>							
2010 .....	5,500	7,100	39,050	39,050	27,350	11,700	
2011 .....	5,800	6,240	37,000	36,200	28,600	7,600	
2012 .....	5,700	7,020	40,500	40,000	30,000	10,000	
<b>Oregon</b>							
2010 .....	7,500	7,280	54,600	54,600	27,300	27,300	
2011 .....	7,800	8,400	65,500	65,500	36,700	28,800	
2012 .....	7,900	9,110	72,000	72,000	37,500	34,500	
<b>Washington</b>							
2010 .....	5,200	8,080	42,000	42,000	12,200	29,800	
2011 .....	7,000	8,710	61,000	61,000	30,500	30,500	
2012 .....	8,000	8,750	70,000	70,000	35,000	35,000	
<b>United States</b>							
2010 .....	69,610	5,900	416,510	410,830	246,430	164,400	
2011 .....	72,500	6,030	443,200	437,000	287,300	149,700	
2012 .....	77,700	5,940	473,350	461,800	280,800	181,000	

See footnote(s) at end of table.

--continued

**Berry Area Harvested, Yield, Production, Utilization, Price, and Value by Crop – States and United States: 2010-2012 (continued)**

Crop, State, and year	Price per pound			Value of production		
	Fresh (dollars)	Processed (dollars)	All (dollars)	Fresh (1,000 dollars)	Processed (1,000 dollars)	Total (1,000 dollars)
<b>Cultivated blueberries</b>						
Alabama <sup>2</sup>						
2010 .....	1.760	(X)	1.760	757	(X)	757
2011 .....	1.700	(X)	1.700	850	(X)	850
2012 .....	2.120	(X)	2.120	1,484	(X)	1,484
Arkansas <sup>2</sup>						
2010 .....	1.780	(X)	1.780	1,157	(X)	1,157
2011 .....	1.730	(X)	1.730	692	(X)	692
2012 .....	1.650	(X)	1.650	660	(X)	660
California <sup>2</sup>						
2010 .....	2.710	(X)	2.710	75,980	(X)	75,980
2011 .....	2.410	(X)	2.410	101,461	(X)	101,461
2012 .....	3.270	(X)	3.270	133,743	(X)	133,743
Florida <sup>2</sup>						
2010 .....	2.880	(X)	2.880	47,272	(X)	47,272
2011 .....	3.230	(X)	3.230	69,122	(X)	69,122
2012 .....	3.630	(X)	3.630	62,073	(X)	62,073
Georgia						
2010 .....	1.710	0.720	1.330	61,560	15,840	77,400
2011 .....	1.850	0.920	1.510	72,150	21,160	93,310
2012 .....	2.000	0.610	1.340	74,000	20,130	94,130
Indiana						
2010 .....	1.640	0.620	1.190	3,280	992	4,272
2011 .....	1.950	1.150	1.800	2,535	345	2,880
2012 .....	2.320	1.000	1.880	2,320	500	2,820
Michigan						
2010 .....	1.700	0.850	1.230	83,300	51,000	134,300
2011 .....	2.150	1.200	1.650	73,100	45,600	118,700
2012 .....	2.000	1.050	1.410	66,000	56,700	122,700
Mississippi						
2010 .....	1.600	0.800	1.100	4,800	4,000	8,800
2011 .....	2.000	1.350	1.600	8,000	8,775	16,775
2012 .....	2.400	1.300	1.730	8,400	7,150	15,550
New Jersey						
2010 .....	1.340	0.890	1.280	56,280	6,230	62,510
2011 .....	1.600	1.300	1.530	75,200	19,500	94,700
2012 .....	1.640	1.210	1.570	70,520	10,285	80,805
New York <sup>2</sup>						
2010 .....	2.150	(X)	2.150	4,521	(X)	4,521
2011 .....	2.200	(X)	2.200	3,957	(X)	3,957
2012 .....	2.290	(X)	2.290	3,893	(X)	3,893
North Carolina						
2010 .....	1.870	0.600	1.490	51,145	7,020	58,165
2011 .....	2.000	1.200	1.830	57,200	9,120	66,320
2012 .....	2.100	0.800	1.780	63,000	8,000	71,000
Oregon						
2010 .....	1.460	0.870	1.170	39,858	23,751	63,609
2011 .....	1.990	1.520	1.780	73,033	43,776	116,809
2012 .....	2.040	0.900	1.490	76,500	31,050	107,550
Washington						
2010 .....	2.380	0.860	1.300	29,036	25,628	54,664
2011 .....	2.560	1.440	2.000	78,080	43,920	122,000
2012 .....	1.490	0.950	1.220	52,150	33,250	85,400
United States						
2010 .....	1.860	0.818	1.440	458,946	134,461	593,407
2011 .....	2.140	1.280	1.850	615,380	192,196	807,576
2012 .....	2.190	0.923	1.690	614,743	167,065	781,808

See footnote(s) at end of table.

--continued

**Berry Area Harvested, Yield, Production, Utilization, Price, and Value by Crop – States and United States: 2010-2012 (continued)**

Crop, State, and year	Area harvested	Yield per acre <sup>1</sup>	Production		Utilization	
			Total	Utilized	Fresh	Processed
	(acres)	(pounds)	(1,000 pounds)	(1,000 pounds)	(1,000 pounds)	(1,000 pounds)
<b>Wild blueberries</b>						
Maine						
2010 .....	(X)	(X)	83,000	83,000	500	82,500
2011 .....	(X)	(X)	79,900	79,900	600	79,300
2012 .....	(X)	(X)	91,100	91,100	500	90,600
<b>Boysenberries</b>						
Oregon						
2010 .....	500	4,200	2,100	2,100	200	1,900
2011 .....	500	5,200	2,625	2,600	100	2,500
2012 .....	400	4,880	1,950	1,950	50	1,900
<b>Black raspberries</b>						
Oregon						
2010 .....	1,300	1,340	1,750	1,740	140	1,600
2011 .....	1,100	2,030	2,230	2,230	30	2,200
2012 .....	900	2,390	2,150	2,150	50	2,100
<b>Red raspberries</b>						
Oregon						
2010 .....	1,300	3,940	5,120	5,120	1,020	4,100
2011 .....	1,200	5,000	6,000	6,000	1,000	5,000
2012 .....	1,200	5,500	6,600	6,600	800	5,800
Washington						
2010 .....	9,600	6,360	61,010	61,010	610	60,400
2011 .....	9,800	7,380	72,300	72,300	400	71,900
2012 .....	9,800	6,400	62,700	62,700	450	62,250
United States						
2010 .....	10,900	6,070	66,130	66,130	1,630	64,500
2011 .....	11,000	7,120	78,300	78,300	1,400	76,900
2012 .....	11,000	6,300	69,300	69,300	1,250	68,050
<b>All raspberries</b>						
California						
2010 .....	5,400	15,000	81,000	81,000	(D)	(D)
2011 .....	5,400	20,000	108,000	108,000	(D)	(D)
2012 .....	5,400	18,000	97,200	97,200	(D)	(D)

See footnote(s) at end of table.

--continued

**Berry Area Harvested, Yield, Production, Utilization, Price, and Value by Crop – States and United States: 2010-2012 (continued)**

Crop, State, and year	Price per pound			Value of production		
	Fresh (dollars)	Processed (dollars)	All (dollars)	Fresh (1,000 dollars)	Processed (1,000 dollars)	Total (1,000 dollars)
<b>Wild blueberries</b>						
Maine						
2010 .....	2.200	0.600	0.610	1,100	49,500	50,600
2011 .....	2.200	0.900	0.910	1,320	71,370	72,690
2012 .....	2.250	0.750	0.758	1,125	67,950	69,075
<b>Boysenberries</b>						
Oregon						
2010 .....	1.000	0.860	0.873	200	1,634	1,834
2011 .....	1.880	0.980	1.010	188	2,450	2,638
2012 .....	1.730	1.030	1.050	87	1,957	2,044
<b>Black raspberries</b>						
Oregon						
2010 .....	1.320	1.250	1.260	185	2,000	2,185
2011 .....	2.540	2.470	2.470	76	5,434	5,510
2012 .....	2.480	2.650	2.650	124	5,565	5,689
<b>Red raspberries</b>						
Oregon						
2010 .....	1.830	1.050	1.210	1,867	4,305	6,172
2011 .....	1.800	0.920	1.070	1,800	4,600	6,400
2012 .....	1.780	0.900	1.010	1,424	5,220	6,644
Washington						
2010 .....	1.190	0.820	0.824	726	49,528	50,254
2011 .....	2.990	0.600	0.613	1,196	43,140	44,336
2012 .....	2.540	0.590	0.604	1,143	36,728	37,871
United States						
2010 .....	1.590	0.835	0.853	2,593	53,833	56,426
2011 .....	2.140	0.621	0.648	2,996	47,740	50,736
2012 .....	2.050	0.616	0.642	2,567	41,948	44,515
<b>All raspberries</b>						
California						
2010 .....	(D)	(D)	2.470	(D)	(D)	200,288
2011 .....	(D)	(D)	2.070	(D)	(D)	223,200
2012 .....	(D)	(D)	2.470	(D)	(D)	239,820

(D) Withheld to avoid disclosing data for individual operations.

(X) Not applicable.

<sup>1</sup> Yield is based on utilized production.

<sup>2</sup> Small quantities of processed blueberries are included in fresh to avoid disclosure of individual operations.

## Unutilized Berry Production – States and United States: 2010-2012

Crop and State	Unharvested production			Harvested not sold		
	2010 (1,000 pounds)	2011 (1,000 pounds)	2012 (1,000 pounds)	2010 (1,000 pounds)	2011 (1,000 pounds)	2012 (1,000 pounds)
<b>Black raspberries</b>						
Oregon .....	10	-	-	-	-	-
<b>Cultivated blueberries</b>						
Alabama .....	110	180	120	10	20	30
Arkansas .....	90	10	10	-	90	90
Florida .....	970	1,200	500	300	800	500
Georgia .....	4,000	3,000	6,000	-	-	1,000
New Jersey .....	-	-	2,500	-	-	-
New York .....	100	100	300	100	-	-
North Carolina .....	-	800	500	-	-	-
United States .....	5,270	5,290	9,930	410	910	1,620
<b>Boysenberries</b>						
Oregon .....	-	25	-	-	-	-

- Represents zero.

## Blackberry Area Harvested, Yield, Production, Utilization, Price, and Value by Variety – Oregon: 2010-2012

Variety and year	Area harvested	Yield per acre <sup>1</sup>	Production		Utilization	
			Total	Utilized	Fresh	Processed
	(acres)	(pounds)	(1,000 pounds)	(1,000 pounds)	(1,000 pounds)	(1,000 pounds)
<b>Cultivated blackberries</b>						
Marion						
2010 .....	3,900	4,790	19,700	18,700	600	18,100
2011 .....	4,000	6,730	27,100	26,900	900	26,000
2012 .....	3,500	7,270	25,460	25,460	260	25,200
Evergreen						
2010 .....	500	8,920	4,460	4,460	60	4,400
2011 .....	400	7,200	2,880	2,880	30	2,850
2012 .....	500	8,240	4,120	4,120	20	4,100
Other						
2010 .....	3,100	6,610	21,010	20,500	3,500	17,000
2011 .....	2,900	7,900	22,900	22,900	3,100	19,800
2012 .....	2,800	8,550	23,940	23,940	2,640	21,300
All						
2010 .....	7,500	5,820	45,170	43,660	4,160	39,500
2011 .....	7,300	7,220	52,880	52,680	4,030	48,650
2012 .....	6,800	7,870	53,520	53,520	2,920	50,600
Variety and year	Price per pound			Value of production		
	Fresh	Processed	All	Fresh	Processed	Total
	(dollars)	(dollars)	(dollars)	(1,000 dollars)	(1,000 dollars)	(1,000 dollars)
<b>Cultivated blackberries</b>						
Marion						
2010 .....	1.270	0.690	0.709	762	12,489	13,251
2011 .....	1.210	0.780	0.794	1,089	20,280	21,369
2012 .....	1.130	0.800	0.803	294	20,160	20,454
Evergreen						
2010 .....	1.400	0.640	0.650	84	2,816	2,900
2011 .....	1.500	0.690	0.699	45	1,967	2,012
2012 .....	1.300	0.700	0.703	26	2,870	2,896
Other						
2010 .....	1.740	0.650	0.836	6,090	11,050	17,140
2011 .....	1.660	0.720	0.847	5,146	14,256	19,402
2012 .....	2.210	0.720	0.884	5,834	15,336	21,170
All						
2010 .....	1.670	0.667	0.763	6,936	26,355	33,291
2011 .....	1.560	0.750	0.812	6,280	36,503	42,783
2012 .....	2.110	0.758	0.832	6,154	38,366	44,520

<sup>1</sup> Yield is based on utilized production.

## Unutilized Cultivated Blackberry Production by Variety – States and United States: 2010-2012

Variety	Unharvested production			Harvested not sold		
	2010	2011	2012	2010	2011	2012
	(1,000 pounds)	(1,000 pounds)	(1,000 pounds)	(1,000 pounds)	(1,000 pounds)	(1,000 pounds)
<b>Cultivated blackberries</b> .....	1,510	200	-	-	-	-
Marion .....	1,000	200	-	-	-	-
Other .....	510	-	-	-	-	-

- Represents zero.

## Sweet Cherry Bearing Acreage, Yield, Production, Utilization, Price, and Value – States and United States: 2010-2012

[Blank cells indicate estimation period has not yet begun]

State and year	Bearing acreage	Yield per acre <sup>1</sup>	Production		Utilization	
			Total	Utilized	Fresh	Processed
	(acres)	(tons)	(tons)	(tons)	(tons)	(tons)
<b>California</b>						
2010 .....	29,000	3.34	97,000	94,000	83,000	11,000
2011 .....	30,000	2.27	68,000	66,000	57,000	9,000
2012 .....	31,000	2.98	92,300	89,300	78,000	11,300
<b>Idaho</b>						
2010 .....	900	2.11	1,900	1,800	(D)	(D)
2011 .....	900	3.11	2,800	2,800	(D)	(D)
2012 .....	900	4.00	3,600	3,300	(D)	(D)
<b>Michigan</b>						
2010 .....	6,700	2.25	15,100	14,400	1,100	13,300
2011 .....	6,500	2.86	18,600	18,600	2,200	16,400
2012 .....	6,500	0.65	4,250	4,250	120	4,130
<b>Montana</b>						
2010 .....	730	3.38	2,470	2,050	(D)	(D)
2011 .....	720	2.80	2,015	1,650	(D)	(D)
2012 .....	690	3.26	2,250	1,395	(D)	(D)
<b>New York</b>						
2010 .....	700	1.43	1,000	800	(D)	(D)
2011 .....	700	1.00	700	670	(D)	(D)
2012 .....	700	0.43	300	290	(D)	(D)
<b>Oregon</b>						
2010 .....	12,500	3.09	38,650	37,500	25,500	12,000
2011 .....	12,500	3.64	45,500	43,800	29,600	14,200
2012 .....	12,500	4.48	56,000	54,600	39,500	15,100
<b>Utah</b>						
2010 .....	500	2.20	1,100	1,080	650	430
2011 .....	500	1.60	800	770	330	440
2012 .....	500	2.60	1,300	1,280	700	580
<b>Washington</b>						
2010 .....	34,000	4.59	156,000	156,000	130,000	26,000
2011 .....	34,000	5.76	196,000	196,000	165,000	31,000
2012 .....	34,000	7.76	264,000	264,000	210,000	54,000
<b>Other States</b>						
2010 .....	(X)	(X)	(X)	(X)	4,090	560
2011 .....	(X)	(X)	(X)	(X)	4,790	330
2012 .....	(X)	(X)	(X)	(X)	4,235	750
<b>United States</b>						
2010 .....	85,030	3.68	313,220	307,630	244,340	63,290
2011 .....	85,820	3.90	334,415	330,290	258,920	71,370
2012 .....	86,790	4.89	424,000	418,415	332,555	85,860

See footnote(s) at end of table.

--continued



**Sweet Cherry Bearing Acreage, Yield, Production, Utilization, Price, and Value – States and United States: 2010-2012 (continued)**

[Blank cells indicate estimation period has not yet begun]

State and year	Price per ton			Value of production		
	Fresh (dollars)	Processed (dollars)	All (dollars)	Fresh (1,000 dollars)	Processed (1,000 dollars)	All (1,000 dollars)
<b>California</b>						
2010 .....	3,090.00	204.00	2,750.00	256,470	2,245	258,715
2011 .....	3,430.00	193.00	2,990.00	195,510	1,740	197,250
2012 .....	3,270.00	240.00	2,890.00	255,060	2,712	257,772
<b>Idaho</b>						
2010 .....	(D)	(D)	2,230.00	(D)	(D)	4,011
2011 .....	(D)	(D)	2,620.00	(D)	(D)	7,337
2012 .....	(D)	(D)	2,640.00	(D)	(D)	8,706
<b>Michigan</b>						
2010 .....	2,290.00	545.00	678.00	2,519	7,246	9,765
2011 .....	2,410.00	777.00	970.00	5,302	12,740	18,042
2012 .....	4,280.00	1,360.00	1,440.00	514	5,619	6,133
<b>Montana</b>						
2010 .....	(D)	(D)	1,960.00	(D)	(D)	4,026
2011 .....	(D)	(D)	2,470.00	(D)	(D)	4,068
2012 .....	(D)	(D)	1,450.00	(D)	(D)	2,019
<b>New York</b>						
2010 .....	(D)	(D)	2,820.00	(D)	(D)	2,255
2011 .....	(D)	(D)	3,140.00	(D)	(D)	2,106
2012 .....	(D)	(D)	3,700.00	(D)	(D)	1,073
<b>Oregon</b>						
2010 .....	2,392.00	899.00	1,910.00	60,996	10,790	71,786
2011 .....	2,240.00	800.00	1,770.00	66,304	11,360	77,664
2012 .....	1,517.00	972.00	1,370.00	59,922	14,684	74,606
<b>Utah</b>						
2010 .....	1,860.00	521.00	1,330.00	1,209	224	1,433
2011 .....	2,760.00	502.00	1,470.00	911	221	1,132
2012 .....	2,300.00	421.00	1,450.00	1,610	244	1,854
<b>Washington</b>						
2010 .....	2,720.00	388.00	2,330.00	353,600	10,093	363,693
2011 .....	3,120.00	393.00	2,690.00	514,800	12,186	526,986
2012 .....	2,140.00	773.00	1,860.00	449,400	41,748	491,148
<b>Other States</b>						
2010 .....	2,480.00	241.00	(X)	10,157	135	(X)
2011 .....	2,790.00	412.00	(X)	13,375	136	(X)
2012 .....	2,710.00	429.00	(X)	11,476	322	(X)
<b>United States</b>						
2010 .....	2,800.00	486.00	2,330.00	684,951	30,733	715,684
2011 .....	3,080.00	538.00	2,530.00	796,202	38,383	834,585
2012 .....	2,340.00	761.00	2,020.00	777,982	65,329	843,311

(D) Withheld to avoid disclosing data for individual operations.

(X) Not applicable.

<sup>1</sup> Yield is based on total production.

**Tart Cherry Bearing Acreage, Yield, Production, Utilization, Price, and Value – States and United States: 2010-2012**

State and year	Bearing acreage	Yield per acre <sup>1</sup>	Production		Utilization	
			Total	Utilized	Fresh	Processed
	(acres)	(pounds)	(million pounds)	(million pounds)	(million pounds)	(million pounds)
<b>Michigan</b>						
2010 .....	26,200	5,150	135.0	128.7	0.2	128.5
2011 .....	26,700	5,900	157.5	156.7	0.2	156.5
2012 .....	27,300	425	11.6	11.6	0.1	11.5
<b>New York</b>						
2010 .....	1,500	5,200	7.8	7.8	(D)	(D)
2011 .....	1,500	3,930	5.9	5.9	(D)	(D)
2012 .....	1,500	1,800	2.7	2.7	(D)	(D)
<b>Oregon</b>						
2010 .....	650	1,850	1.2	1.2	(D)	(D)
2011 .....	650	3,850	2.5	2.5	(D)	(D)
2012 .....	650	1,540	1.0	1.0	(D)	(D)
<b>Pennsylvania</b>						
2010 .....	600	3,830	2.3	2.1	(D)	(D)
2011 .....	550	5,820	3.2	3.1	(D)	(D)
2012 .....	550	6,000	3.3	3.2	(D)	(D)
<b>Utah</b>						
2010 .....	3,300	6,970	23.0	22.5	-	22.5
2011 .....	3,300	10,600	35.0	34.5	-	34.5
2012 .....	3,300	12,100	40.0	40.0	-	40.0
<b>Washington</b>						
2010 .....	1,600	9,630	15.4	15.4	(D)	(D)
2011 .....	1,600	13,100	20.9	20.9	(D)	(D)
2012 .....	1,600	15,500	24.8	24.8	(D)	(D)
<b>Wisconsin</b>						
2010 .....	1,800	3,170	5.7	5.5	0.2	5.3
2011 .....	1,700	3,940	6.7	6.7	0.1	6.6
2012 .....	1,600	1,060	1.7	1.7	0.1	1.6
<b>Other States</b>						
2010 .....	(X)	(X)	(X)	(X)	0.4	26.1
2011 .....	(X)	(X)	(X)	(X)	0.2	32.2
2012 .....	(X)	(X)	(X)	(X)	0.2	31.5
<b>United States</b>						
2010 .....	35,650	5,340	190.4	183.2	0.8	182.4
2011 .....	36,000	6,440	231.7	230.3	0.5	229.8
2012 .....	36,500	2,330	85.1	85.0	0.4	84.6

See footnote(s) at end of table.

--continued

**Tart Cherry Bearing Acreage, Yield, Production, Utilization, Price, and Value – States and United States: 2010-2012 (continued)**

State and year	Price per pound			Value of production		
	Fresh (dollars)	Processed (dollars)	All (dollars)	Fresh (1,000 dollars)	Processed (1,000 dollars)	All (1,000 dollars)
Michigan						
2010 .....	1.100	0.210	0.212	220	27,040	27,260
2011 .....	1.250	0.300	0.301	250	46,960	47,210
2012 .....	2.400	1.100	1.110	240	12,640	12,880
New York						
2010 .....	(D)	(D)	0.174	(D)	(D)	1,360
2011 .....	(D)	(D)	0.242	(D)	(D)	1,426
2012 .....	(D)	(D)	1.050	(D)	(D)	2,844
Oregon						
2010 .....	(D)	(D)	0.317	(D)	(D)	380
2011 .....	(D)	(D)	0.340	(D)	(D)	850
2012 .....	(D)	(D)	0.951	(D)	(D)	951
Pennsylvania						
2010 .....	(D)	(D)	0.257	(D)	(D)	540
2011 .....	(D)	(D)	0.371	(D)	(D)	1,150
2012 .....	(D)	(D)	1.110	(D)	(D)	3,560
Utah						
2010 .....	(X)	0.270	0.270	(X)	6,075	6,075
2011 .....	(X)	0.290	0.290	(X)	10,005	10,005
2012 .....	(X)	0.510	0.510	(X)	20,400	20,400
Washington						
2010 .....	(D)	(D)	0.228	(D)	(D)	3,515
2011 .....	(D)	(D)	0.312	(D)	(D)	6,521
2012 .....	(D)	(D)	0.323	(D)	(D)	8,000
Wisconsin						
2010 .....	0.634	0.280	0.293	127	1,484	1,611
2011 .....	0.646	0.280	0.285	65	1,845	1,910
2012 .....	1.250	1.100	1.110	125	1,760	1,885
Other States						
2010 .....	1.760	0.195	(X)	703	5,092	(X)
2011 .....	1.370	0.300	(X)	273	9,674	(X)
2012 .....	1.970	0.475	(X)	394	14,961	(X)
United States						
2010 .....	1.310	0.218	0.222	1,050	39,691	40,741
2011 .....	1.180	0.298	0.300	588	68,484	69,072
2012 .....	1.900	0.588	0.594	759	49,761	50,520

- Represents zero.

(D) Withheld to avoid disclosing data for individual operations.

(X) Not applicable.

<sup>1</sup> Yield is based on total production.

**Sweet and Tart Cherry Processed Utilization and Price by Use – States and United States: 2010-2012**

Crop, utilization, and State	Quantity			Price per unit		
	2010	2011	2012	2010	2011	2012
	(tons)	(tons)	(tons)	(dollars per ton)	(dollars per ton)	(dollars per ton)
<b>Sweet cherries</b>						
<b>Canned</b>						
Michigan .....	450	1,800	(D)	660.00	1,000.00	(D)
Oregon .....	700	1,450	(D)	995.00	1,100.00	(D)
Washington .....	2,000	3,000	3,000	1,100.00	968.00	1,100.00
United States .....	3,150	6,250	5,900	1,014.00	1,010.00	1,150.00
<b>Brined</b>						
Michigan .....	8,500	9,150	1,350	490.00	600.00	1,050.00
Oregon .....	10,200	10,500	9,600	910.00	750.00	950.00
Utah .....	430	440	580	521.00	502.00	420.00
Washington .....	11,500	14,000	29,000	470.00	480.00	750.00
Other States <sup>1</sup> .....	7,604	5,535	6,535	245.00	241.00	244.00
United States .....	38,234	39,625	47,065	548.00	546.00	725.00
<b>Other <sup>2</sup></b>						
Michigan .....	4,350	5,450	2,780	640.00	1,000.00	1,510.00
Oregon .....	1,100	2,250	5,500	737.00	840.00	1,010.00
Washington .....	12,500	14,000	22,000	199.00	183.00	759.00
Other States <sup>1</sup> .....	3,955	3,795	2,615	132.00	138.00	264.00
United States .....	21,905	25,495	32,895	302.00	409.00	780.00
	(million pounds)	(million pounds)	(million pounds)	(dollars per pound)	(dollars per pound)	(dollars per pound)
<b>Tart cherries</b>						
<b>Canned</b>						
Michigan .....	29.0	34.0	3.0	0.210	0.340	1.160
Other States <sup>1</sup> .....	6.3	4.4	3.5	0.153	0.308	1.080
United States .....	35.3	38.4	6.5	0.200	0.336	1.120
<b>Frozen</b>						
Michigan .....	87.0	101.0	8.0	0.215	0.295	1.080
Utah .....	22.5	34.5	40.0	0.270	0.290	0.510
Other States <sup>1</sup> .....	16.4	18.6	11.8	0.210	0.260	0.533
United States .....	125.9	154.1	59.8	0.224	0.290	0.591
<b>Other <sup>3</sup></b>						
Michigan .....	12.5	21.5	0.5	0.180	0.261	1.040
Other States <sup>1</sup> .....	8.7	15.8	17.8	0.248	0.337	0.373
United States .....	21.2	37.3	18.3	0.208	0.293	0.392

(D) Withheld to avoid disclosing data for individual operations.

<sup>1</sup> Includes data withheld above and/or data for States not listed in this table.

<sup>2</sup> Includes California canned utilization and other processed utilizations (frozen, juice, etc.) from all States.

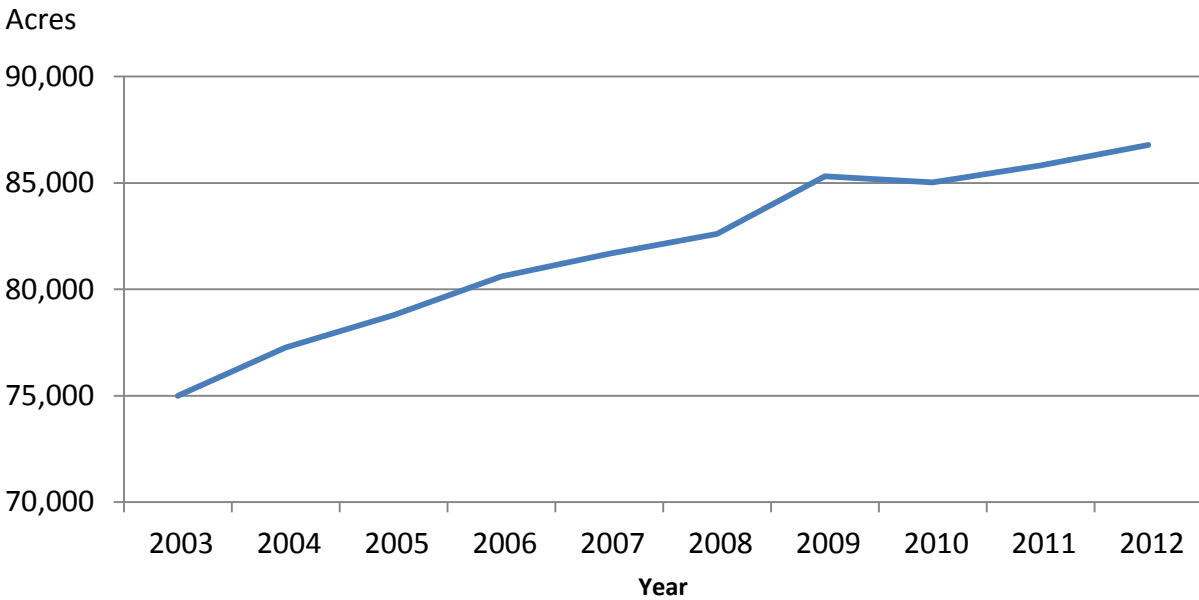
<sup>3</sup> Juice, wine, brined, and dried.

## Unutilized Cherry Production by Crop – States and United States: 2010-2012

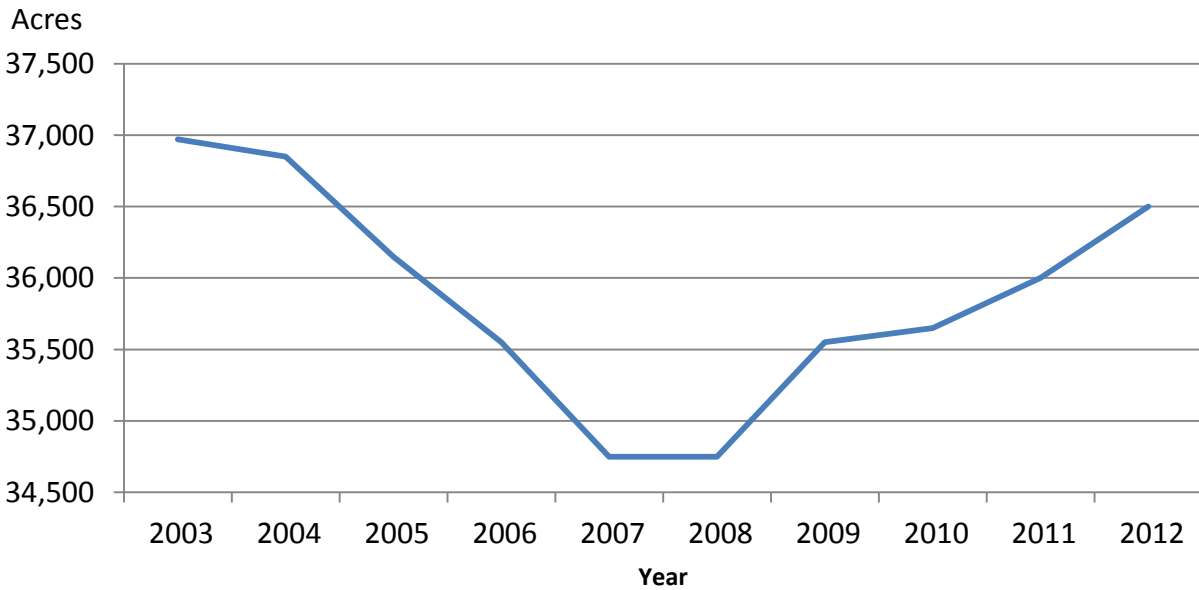
Crop and State	Unharvested production			Harvested not sold		
	2010 (tons)	2011 (tons)	2012 (tons)	2010 (tons)	2011 (tons)	2012 (tons)
<b>Sweet Cherries</b>						
California .....	-	-	-	3,000	2,000	3,000
Idaho .....	-	-	300	100	-	-
Michigan .....	300	-	-	400	-	-
Montana .....	130	200	650	290	165	205
New York .....	150	20	10	50	10	-
Oregon .....	1,000	1,500	800	150	200	600
Utah .....	20	10	10	-	20	10
Washington .....	-	-	-	-	-	-
United States .....	1,600	1,730	1,770	3,990	2,395	3,815
	(million pounds)	(million pounds)	(million pounds)	(million pounds)	(million pounds)	(million pounds)
<b>Tart cherries</b>						
Michigan .....	3.0	0.4	-	3.3	0.4	-
New York .....	-	-	-	-	-	-
Pennsylvania .....	-	-	-	0.2	0.1	0.1
Utah .....	0.5	-	-	-	0.5	-
Washington .....	-	-	-	-	-	-
Wisconsin .....	0.2	-	-	-	-	-
United States .....	3.7	0.4	-	3.5	1.0	0.1

- Represents zero.

## Sweet Cherry Bearing Acreage United States: 2003-2012



## Tart Cherry Bearing Acreage United States: 2003-2012



## Cranberry Area Harvested, Yield, Production, Utilization, Price and Value – States and United States: 2010-2012

[A barrel weighs 100 pounds]

Year and State	Area harvested	Yield per acre	Production		Utilization	
			Total	Utilized	Fresh	Processed
	(acres)	(barrels)	(barrels)	(barrels)	(barrels)	(barrels)
<b>Massachusetts</b>						
2010 .....	13,000	145.5	1,891,000	1,891,000	112,000	1,779,000
2011 .....	13,000	178.2	2,317,000	2,317,000	110,000	2,207,000
2012 .....	13,000	163.3	2,123,000	2,123,000	83,000	2,040,000
<b>New Jersey<sup>1</sup></b>						
2010 .....	3,100	181.3	562,000	562,000	-	562,000
2011 .....	3,000	170.0	510,000	510,000	-	510,000
2012 .....	3,000	183.3	550,000	550,000	-	550,000
<b>Oregon<sup>1</sup></b>						
2010 .....	2,700	106.3	287,000	287,000	-	287,000
2011 .....	2,800	128.9	361,000	361,000	-	361,000
2012 .....	2,900	139.7	405,000	405,000	-	405,000
<b>Washington</b>						
2010 .....	1,700	63.6	108,200	108,200	27,200	81,000
2011 .....	1,700	68.1	115,700	115,700	20,500	95,200
2012 .....	1,700	80.6	137,000	137,000	41,000	96,000
<b>Wisconsin</b>						
2010 .....	18,000	220.0	3,960,000	3,960,000	80,000	3,880,000
2011 .....	18,000	245.0	4,410,000	4,410,000	110,000	4,300,000
2012 .....	19,700	245.2	4,830,000	4,830,000	130,000	4,700,000
<b>United States</b>						
2010 .....	38,500	176.8	6,808,200	6,808,200	219,200	6,589,000
2011 .....	38,500	200.4	7,713,700	7,713,700	240,500	7,473,200
2012 .....	40,300	199.6	8,045,000	8,045,000	254,000	7,791,000
Year and State	Price per barrel <sup>2</sup>			Value of utilized production		
	Fresh	Processed	All	Fresh	Processed	All
	(dollars)	(dollars)	(dollars)	(1,000 dollars)	(1,000 dollars)	(1,000 dollars)
<b>Massachusetts</b>						
2010 .....	69.50	40.40	42.10	7,784	71,872	79,656
2011 .....	64.80	43.70	44.70	7,128	96,446	103,574
2012 .....	69.90	46.10	47.00	5,802	94,044	99,846
<b>New Jersey<sup>1</sup></b>						
2010 .....	(X)	53.70	53.70	(X)	30,179	30,179
2011 .....	(X)	51.00	51.00	(X)	26,010	26,010
2012 .....	(X)	54.40	54.40	(X)	29,920	29,920
<b>Oregon<sup>1</sup></b>						
2010 .....	(X)	34.50	34.50	(X)	9,902	9,902
2011 .....	(X)	39.50	39.50	(X)	14,260	14,260
2012 .....	(X)	40.40	40.40	(X)	16,362	16,362
<b>Washington</b>						
2010 .....	75.70	54.70	60.00	2,059	4,431	6,490
2011 .....	71.60	51.40	55.00	1,468	4,893	6,361
2012 .....	82.40	55.50	63.50	3,378	5,328	8,706
<b>Wisconsin</b>						
2010 .....	75.70	43.00	43.70	6,056	166,840	172,896
2011 .....	71.60	43.60	44.30	7,876	187,480	195,356
2012 .....	82.40	46.80	47.80	10,712	219,960	230,672
<b>United States</b>						
2010 .....	72.50	43.00	43.90	15,899	283,224	299,123
2011 .....	68.50	44.00	44.80	16,472	329,089	345,561
2012 .....	78.30	46.90	47.90	19,892	365,614	385,506

- Represents zero.

(X) Not applicable.

<sup>1</sup> Small quantities of fresh cranberries are included in processed to avoid disclosure of individual operations.

<sup>2</sup> Weighted average of co-op and independent sales. Co-op prices represent pool proceeds less returns for processing non-cranberry products, capital stock dividends, capital stock retains, and other retains.

**Grape Bearing Acreage, Yield, Production, Price, and Value – States and United States: 2010-2012**

State and type	Bearing acreage			Yield per acre <sup>1</sup>		
	2010	2011	2012	2010	2011	2012
	(acres)	(acres)	(acres)	(tons)	(tons)	(tons)
Arkansas .....	600	600	600	3.50	2.00	2.17
California .....	792,000	796,000	796,000	8.55	8.39	8.39
Wine .....	497,000	506,000	506,000	7.30	6.69	7.39
Table .....	85,000	85,000	85,000	11.90	12.10	11.60
Raisin .....	210,000	205,000	205,000	10.20	11.00	9.52
Georgia .....	1,300	1,500	1,800	3.54	2.33	2.61
Michigan .....	14,400	14,500	14,700	2.50	6.51	2.60
Missouri .....	1,700	1,700	1,700	3.00	3.06	2.71
New York .....	37,000	37,000	37,000	4.76	5.08	3.11
North Carolina .....	1,800	1,800	1,800	2.89	2.89	2.75
Ohio .....	1,900	1,900	1,900	1.83	3.94	2.81
Oregon .....	16,900	17,500	18,000	1.85	2.37	2.56
Pennsylvania .....	13,600	13,600	13,600	6.10	6.69	4.49
Texas .....	3,000	4,400	3,400	2.97	1.21	2.18
Virginia .....	2,700	2,600	2,600	2.44	2.65	2.65
Washington .....	65,000	67,000	69,000	5.17	4.72	5.36
Wine .....	39,000	41,000	43,000	4.10	3.46	4.30
Juice .....	26,000	26,000	26,000	6.77	6.69	7.12
United States .....	951,900	960,100	962,100	7.85	7.76	7.63
State and type	Total production			Utilized production		
	2010	2011	2012	2010	2011	2012
	(tons)	(tons)	(tons)	(tons)	(tons)	(tons)
Arkansas .....	2,100	1,200	1,300	1,990	1,100	1,100
California .....	6,773,000	6,682,000	6,678,000	6,773,000	6,682,000	6,678,000
Wine .....	3,629,000	3,387,000	3,740,000	3,629,000	3,387,000	3,740,000
Table <sup>2</sup> .....	1,011,000	1,032,000	987,000	1,011,000	1,032,000	987,000
Raisin <sup>2</sup> .....	2,133,000	2,263,000	1,951,000	2,133,000	2,263,000	1,951,000
Georgia .....	4,600	3,500	4,700	4,300	3,300	4,000
Michigan .....	36,000	94,400	38,200	36,000	93,400	38,200
Missouri .....	5,100	5,200	4,600	5,100	5,200	4,600
New York .....	176,000	188,000	115,000	176,000	188,000	112,000
North Carolina .....	5,200	5,200	4,950	4,950	4,980	4,800
Ohio .....	3,470	7,480	5,335	3,050	7,330	5,293
Oregon .....	31,200	41,500	46,000	31,200	41,500	46,000
Pennsylvania .....	83,000	91,000	61,000	82,000	87,000	59,000
Texas .....	8,900	5,330	7,420	8,500	4,610	7,300
Virginia .....	6,600	6,900	6,900	6,450	6,020	6,700
Washington .....	336,000	316,000	370,000	336,000	316,000	370,000
Wine .....	160,000	142,000	185,000	160,000	142,000	185,000
Juice .....	176,000	174,000	185,000	176,000	174,000	185,000
United States .....	7,471,170	7,447,710	7,343,405	7,468,540	7,440,440	7,336,993

See footnote(s) at end of table.

--continued



**Grape Bearing Acreage, Yield, Production, Price, and Value – States and United States: 2010-2012 (continued)**

State and type	Price per ton			Value of utilized production		
	2010 (dollars)	2011 (dollars)	2012 (dollars)	2010 (1,000 dollars)	2011 (1,000 dollars)	2012 (1,000 dollars)
Arkansas .....	811.00	982.00	1,160.00	1,613	1,080	1,281
California .....	474.00	578.00	666.00	3,209,040	3,859,202	4,450,626
Wine .....	576.00	638.00	(D)	2,090,886	2,160,519	(D)
Table <sup>2</sup> .....	382.00	809.00	1,200.00	386,524	834,967	1,180,430
Raisin <sup>2</sup> .....	343.00	382.00	(D)	731,630	863,716	(D)
Georgia .....	1,270.00	1,280.00	1,410.00	5,440	4,230	5,624
Michigan .....	430.00	364.00	468.00	15,497	33,957	17,892
Missouri .....	885.00	831.00	725.00	4,513	4,323	3,334
New York .....	387.00	373.00	467.00	68,068	70,056	52,252
North Carolina .....	918.00	1,030.00	931.00	4,545	5,105	4,469
Ohio .....	711.00	398.00	688.00	2,169	2,916	3,642
Oregon .....	2,030.00	1,950.00	2,050.00	63,336	80,925	94,300
Pennsylvania .....	307.00	305.00	348.00	25,152	26,507	20,555
Texas .....	1,250.00	1,520.00	1,450.00	10,657	6,987	10,564
Virginia .....	1,700.00	1,540.00	1,630.00	10,965	9,271	10,921
Washington .....	637.00	598.00	638.00	213,920	189,048	235,875
Wine .....	1,040.00	987.00	990.00	166,400	140,154	183,150
Juice .....	270.00	281.00	285.00	47,520	48,894	52,725
United States .....	487.00	577.00	669.00	3,634,915	4,293,607	4,911,335

(D) Withheld to avoid disclosing data for individual operations.

<sup>1</sup> Yield is based on total production.

<sup>2</sup> Fresh equivalent of dried and not dried.

**Unutilized Grape Production – States and United States: 2010-2012**

State	Unharvested production			Harvested not sold		
	2010 (tons)	2011 (tons)	2012 (tons)	2010 (tons)	2011 (tons)	2012 (tons)
Arkansas .....	100	90	190	10	10	10
Georgia .....	300	200	700	-	-	-
Michigan .....	-	1,000	-	-	-	-
New York .....	-	-	3,000	-	-	-
North Carolina .....	250	170	150	-	50	-
Ohio .....	420	150	42	-	-	-
Pennsylvania .....	1,000	4,000	2,000	-	-	-
Texas .....	380	640	100	20	80	20
Virginia .....	150	880	200	-	-	-
United States .....	2,600	7,130	6,382	30	140	30

- Represents zero.

**Grape Fresh and Processed Utilization, Price, and Value – States and United States: 2010-2012**

Utilization, State, and type	Quantity			Price per ton		
	2010 (tons)	2011 (tons)	2012 (tons)	2010 (dollars)	2011 (dollars)	2012 (dollars)
<b>Fresh</b>						
California .....	984,000	975,000	994,000	474.00	974.00	1,330.00
Wine .....	40,000	40,000	40,000	770.00	712.00	(D)
Table .....	829,000	831,000	831,000	420.00	947.00	1,370.00
Raisin .....	115,000	104,000	123,000	760.00	1,290.00	(D)
Michigan .....	1,100	1,100	450	2,400.00	2,400.00	2,450.00
Missouri .....	60	60	50	1,300.00	950.00	1,150.00
New York .....	4,000	5,000	3,000	1,480.00	1,800.00	1,690.00
North Carolina .....	450	380	380	3,100.00	2,540.00	2,455.00
Ohio .....	40	80	53	1,280.00	738.00	1,773.00
Pennsylvania .....	300	400	300	1,300.00	1,500.00	1,500.00
Texas .....	400	810	100	1,330.00	1,870.00	1,240.00
Other States <sup>1</sup> .....	2,760	1,850	2,050	1,600.00	1,940.00	2,040.00
United States .....	993,110	984,680	1,000,383	485.00	983.00	1,340.00
<b>Processed</b>						
California .....	5,789,000	5,707,000	5,684,000	474.00	510.00	550.00
Wine .....	3,589,000	3,347,000	3,700,000	574.00	637.00	637.00
Table .....	182,000	201,000	156,000	211.00	239.00	269.00
Raisin .....	2,018,000	2,159,000	1,828,000	319.00	338.00	397.00
Michigan .....	34,900	92,300	37,750	368.00	339.00	445.00
Missouri .....	5,040	5,140	4,550	880.00	830.00	720.00
New York .....	172,000	183,000	109,000	361.00	334.00	433.00
North Carolina .....	4,500	4,600	4,420	700.00	900.00	800.00
Ohio .....	3,010	7,250	5,240	704.00	394.00	677.00
Oregon <sup>2</sup> .....	31,200	41,500	46,000	2,030.00	1,950.00	2,050.00
Pennsylvania .....	81,700	86,600	58,700	303.00	299.00	343.00
Texas .....	8,100	3,800	7,200	1,250.00	1,440.00	1,450.00
Virginia .....	6,450	6,020	6,700	1,700.00	1,540.00	1,630.00
Washington .....	336,000	316,000	370,000	637.00	598.00	638.00
Wine .....	160,000	142,000	185,000	1,040.00	987.00	990.00
Juice .....	176,000	174,000	185,000	270.00	281.00	285.00
Other States <sup>1</sup> .....	3,530	2,550	3,050	746.00	675.00	895.00
United States .....	6,475,430	6,455,760	6,336,610	487.00	515.00	564.00

See footnote(s) at end of table.

--continued

**Grape Fresh and Processed Utilization, Price, and Value – States and United States:  
2010-2012 (continued)**

Utilization, State, and type	Value of utilized production		
	2010 (1,000 dollars)	2011 (1,000 dollars)	2012 (1,000 dollars)
<b>Fresh</b>			
California .....	466,380	949,597	1,326,720
Wine .....	30,800	28,480	(D)
Table .....	348,180	786,957	1,138,470
Raisin .....	87,400	134,160	(D)
Michigan .....	2,640	2,640	1,103
Missouri .....	78	57	58
New York .....	5,920	9,000	5,070
North Carolina .....	1,395	965	933
Ohio .....	51	59	94
Pennsylvania .....	390	600	450
Texas .....	532	1,515	124
Other States <sup>1</sup> .....	4,421	3,590	4,175
United States .....	481,807	968,023	1,338,727
<b>Processed</b>			
California .....	2,742,660	2,909,605	3,123,906
Wine .....	2,060,086	2,132,039	2,356,900
Table .....	38,344	48,010	41,960
Raisin .....	644,230	729,556	725,046
Michigan .....	12,857	31,317	16,789
Missouri .....	4,435	4,266	3,276
New York .....	62,148	61,056	47,182
North Carolina .....	3,150	4,140	3,536
Ohio .....	2,118	2,857	3,548
Oregon <sup>2</sup> .....	63,336	80,925	94,300
Pennsylvania .....	24,762	25,907	20,105
Texas .....	10,125	5,472	10,440
Virginia .....	10,965	9,271	10,921
Washington .....	213,920	189,048	235,875
Wine .....	166,400	140,154	183,150
Juice .....	47,520	48,894	52,725
Other States <sup>1</sup> .....	2,632	1,720	2,730
United States .....	3,153,108	3,325,584	3,572,608

(D) Withheld to avoid disclosing data for individual operations.

<sup>1</sup> Includes data withheld above and/or data for States not listed in this table.

<sup>2</sup> Includes small quantities sold fresh.

## Grape Processed Utilization and Price by Use – States and United States: 2010-2012

Utilization, State, and type	Quantity			Price per ton		
	2010 (tons)	2011 (tons)	2012 (tons)	2010 (dollars)	2011 (dollars)	2012 (dollars)
<b>Canned</b>						
California						
Raisin .....	25,000	25,000	20,000	340.00	355.00	400.00
<b>Juice</b> <sup>1 2</sup>						
Michigan .....	31,100	85,500	30,800	279.00	278.00	289.00
New York .....	124,000	130,000	69,000	291.00	265.00	318.00
Ohio .....	1,400	5,800	2,190	340.00	280.00	319.00
Pennsylvania .....	71,400	74,800	52,500	278.00	270.00	305.00
Washington .....	176,000	174,000	185,000	270.00	281.00	285.00
United States .....	403,900	470,100	339,490	279.00	274.00	295.00
<b>Wine</b>						
California .....	3,987,000	3,875,000	4,100,000	537.00	584.00	603.00
Wine .....	3,589,000	3,347,000	3,700,000	574.00	637.00	637.00
Table .....	124,000	155,000	100,000	174.00	219.00	219.00
Raisin .....	274,000	373,000	300,000	215.00	265.00	315.00
Michigan .....	3,800	6,800	6,950	1,100.00	1,110.00	1,135.00
Missouri .....	5,040	5,140	4,550	880.00	830.00	720.00
New York .....	48,000	53,000	40,000	543.00	502.00	631.00
North Carolina .....	4,500	4,600	4,420	700.00	900.00	800.00
Ohio .....	1,610	1,450	3,050	1,020.00	850.00	934.00
Oregon <sup>2</sup> .....	31,200	41,500	46,000	2,030.00	1,950.00	2,050.00
Pennsylvania .....	10,300	11,800	6,200	477.00	484.00	660.00
Texas .....	8,100	3,800	7,200	1,250.00	1,440.00	1,450.00
Virginia .....	6,450	6,020	6,700	1,700.00	1,540.00	1,630.00
Washington .....	160,000	142,000	185,000	1,040.00	987.00	990.00
Other States <sup>3 4</sup> .....	3,530	2,550	3,050	746.00	675.00	895.00
United States .....	4,269,530	4,153,660	4,413,120	571.00	614.00	639.00
<b>Dried (fresh basis)</b>						
California .....	1,777,000	1,807,000	1,564,000	334.00	352.00	411.00
Table .....	58,000	46,000	56,000	289.00	306.00	358.00
Raisin .....	1,719,000	1,761,000	1,508,000	336.00	353.00	413.00

<sup>1</sup> Includes small quantities of other processed utilizations (jam, jelly, etc.).

<sup>2</sup> Includes small quantities for other uses.

<sup>3</sup> Includes data withheld above and/or data for States not listed in this table.

<sup>4</sup> Some grapes processed for juice are included in Other States wine to avoid disclosure of individual operations.

## Grape Processed Utilization by Variety – States and United States: 2010-2012

Variety and State	2010	2011	2012
	(tons)	(tons)	(tons)
<b>Concord</b>			
Michigan .....	18,100	55,100	21,000
New York .....	117,300	124,700	64,600
Ohio .....	2,900	6,210	4,430
Pennsylvania .....	71,900	74,500	45,500
Washington .....	162,000	156,000	167,000
Other States <sup>1</sup> .....	790	490	580
United States .....	372,990	417,000	303,110
<b>Niagara</b>			
Michigan .....	13,000	31,000	10,800
New York .....	21,600	20,300	11,400
Ohio .....	290	630	450
Pennsylvania .....	6,300	6,800	9,500
Washington .....	14,000	18,000	18,000
United States .....	55,190	76,730	50,150

<sup>1</sup> Includes data withheld above and/or data for States not listed in this table.

## Concord Grapes for Processing Marketing Year Average Prices – New York and Pennsylvania: 2010-2012

State	2010	2011	2012
	(dollars per ton)	(dollars per ton)	(dollars per ton)
New York .....	287.00	262.00	316.00
Pennsylvania .....	274.00	268.00	301.00

**Peach Bearing Acreage, Yield, Production, Price, and Value – States and United States: 2010-2012**

State	Bearing acreage			Yield per acre <sup>1</sup>		
	2010 (acres)	2011 (acres)	2012 (acres)	2010 (tons)	2011 (tons)	2012 (tons)
Alabama .....	1,900	2,200	2,400	3.16	2.59	2.29
Arkansas .....	1,200	1,200	1,200	2.50	1.50	2.50
California .....	50,000	47,500	47,000	16.30	16.30	15.20
Freestone .....	27,000	25,000	24,000	14.30	15.20	14.30
Clingstone .....	23,000	22,500	23,000	18.80	17.50	16.00
Colorado .....	2,400	2,400	2,500	5.83	5.00	6.80
Connecticut .....	400	400	400	3.00	3.00	3.38
Georgia .....	10,800	10,200	9,900	3.70	3.53	3.36
Idaho .....	1,300	1,300	1,300	5.69	5.85	5.85
Illinois .....	1,600	1,600	1,600	5.69	5.80	4.61
Maryland .....	850	800	800	4.71	4.86	5.43
Massachusetts .....	430	430	430	4.07	4.07	3.60
Michigan .....	4,000	3,700	3,600	3.50	4.50	0.55
Missouri .....	1,700	1,500	1,500	2.47	3.40	2.40
New Jersey .....	6,100	5,500	5,300	5.90	5.82	5.66
New York .....	1,600	1,600	1,600	3.69	4.25	1.63
North Carolina .....	1,100	1,100	1,100	5.00	4.82	4.82
Ohio .....	1,200	1,200	1,400	5.20	5.03	3.54
Pennsylvania .....	4,400	4,400	4,400	4.82	4.02	4.73
South Carolina .....	15,500	15,500	17,000	7.10	6.13	4.41
Texas .....	5,400	4,300	4,000	2.59	1.23	2.75
Utah .....	1,500	1,500	1,500	2.87	2.87	3.53
Virginia .....	1,000	1,000	1,000	6.21	6.50	6.50
Washington .....	2,300	2,200	2,200	6.09	6.00	5.91
West Virginia .....	950	950	750	5.58	6.00	5.60
United States .....	117,630	112,480	112,880	9.78	9.53	8.67
State	Total production			Utilized production		
	2010 (tons)	2011 (tons)	2012 (tons)	2010 (tons)	2011 (tons)	2012 (tons)
Alabama .....	6,000	5,700	5,500	4,500	5,300	4,000
Arkansas .....	3,000	1,800	3,000	2,830	1,760	2,790
California .....	817,000	773,000	713,000	817,000	773,000	713,000
Freestone .....	385,000	380,000	344,000	385,000	380,000	344,000
Clingstone .....	432,000	393,000	369,000	432,000	393,000	369,000
Colorado .....	14,000	12,000	17,000	12,000	11,200	16,000
Connecticut .....	1,200	1,200	1,350	1,200	1,100	1,300
Georgia .....	40,000	36,000	33,300	38,500	33,600	31,100
Idaho .....	7,400	7,600	7,600	6,500	6,700	6,800
Illinois .....	9,100	9,280	7,380	7,580	7,890	6,970
Maryland .....	4,000	3,890	4,340	3,990	3,880	4,260
Massachusetts .....	1,750	1,750	1,550	1,750	1,750	1,500
Michigan .....	14,000	16,650	1,980	13,830	16,400	1,980
Missouri .....	4,200	5,100	3,600	4,200	5,100	3,600
New Jersey .....	36,000	32,000	30,000	34,000	30,000	30,000
New York .....	5,900	6,800	2,600	5,850	6,750	2,550
North Carolina .....	5,500	5,300	5,300	5,470	5,150	5,100
Ohio .....	6,240	6,030	4,960	5,980	5,840	4,940
Pennsylvania .....	21,200	17,690	20,800	20,800	17,290	20,350
South Carolina .....	110,000	95,000	75,000	102,800	77,600	70,250
Texas .....	14,000	5,300	11,000	13,000	4,650	10,200
Utah .....	4,300	4,300	5,300	4,240	4,100	5,200
Virginia .....	6,210	6,500	6,500	5,570	5,220	6,430
Washington .....	14,000	13,200	13,000	14,000	13,200	13,000
West Virginia .....	5,300	5,700	4,200	5,000	5,500	4,100
United States .....	1,150,300	1,071,790	978,260	1,130,590	1,042,980	965,420

See footnote(s) at end of table.

--continued

**Peach Bearing Acreage, Yield, Production, Price, and Value – States and United States:  
2010-2012 (continued)**

State	Price per ton			Value of utilized production		
	2010 (dollars)	2011 (dollars)	2012 (dollars)	2010 (1,000 dollars)	2011 (1,000 dollars)	2012 (1,000 dollars)
Alabama .....	1,030.00	1,050.00	1,240.00	4,632	5,565	4,960
Arkansas .....	1,350.00	1,550.00	1,650.00	3,821	2,728	4,604
California .....	354.00	374.00	464.00	289,096	289,197	330,694
Freestone .....	386.00	447.00	588.00	148,728	170,019	202,297
Clingstone .....	325.00	303.00	348.00	140,368	119,178	128,397
Colorado .....	1,870.00	2,000.00	1,580.00	22,440	22,400	25,280
Connecticut .....	2,100.00	2,100.00	2,300.00	2,520	2,310	2,990
Georgia .....	817.00	930.00	961.00	31,460	31,260	29,892
Idaho .....	908.00	1,160.00	1,340.00	5,900	7,800	9,098
Illinois .....	1,060.00	1,260.00	1,390.00	8,065	9,918	9,672
Maryland .....	1,140.00	1,220.00	1,190.00	4,559	4,735	5,078
Massachusetts .....	2,760.00	3,140.00	3,200.00	4,825	5,495	4,800
Michigan .....	921.00	731.00	1,330.00	12,731	11,995	2,624
Missouri .....	1,300.00	1,200.00	1,200.00	5,460	6,120	4,320
New Jersey .....	920.00	1,220.00	1,320.00	31,280	36,600	39,600
New York .....	1,200.00	1,240.00	1,580.00	7,023	8,352	4,022
North Carolina .....	1,090.00	1,000.00	1,220.00	5,962	5,150	6,222
Ohio .....	1,580.00	1,640.00	1,560.00	9,448	9,578	7,706
Pennsylvania .....	1,150.00	1,360.00	1,060.00	23,881	23,462	21,653
South Carolina .....	955.00	970.00	1,050.00	98,130	75,247	74,023
Texas .....	2,100.00	2,000.00	1,850.00	27,300	9,300	18,870
Utah .....	691.00	1,010.00	1,080.00	2,929	4,144	5,633
Virginia .....	683.00	858.00	933.00	3,804	4,479	5,999
Washington .....	620.00	592.00	627.00	8,675	7,809	8,153
West Virginia .....	925.00	852.00	1,300.00	4,625	4,686	5,330
United States .....	547.00	564.00	654.00	618,566	588,330	631,223

<sup>1</sup> Yield is based on total production.

**Peach Utilized Production, Price, and Value by Utilization – States and United States: 2010-2012**

Use and State	Quantity			Price per unit		
	2010 (tons)	2011 (tons)	2012 (tons)	2010 (dollars per ton)	2011 (dollars per ton)	2012 (dollars per ton)
<b>Fresh</b>						
California, Freestone .....	272,000	282,000	250,000	454.00	525.00	726.00
Connecticut .....	1,200	1,100	1,300	2,100.00	2,100.00	2,300.00
Georgia .....	37,000	(D)	(D)	830.00	(D)	(D)
Massachusetts .....	(D)	(D)	1,500	(D)	(D)	3,200.00
Missouri .....	4,200	5,100	3,600	1,300.00	1,200.00	1,200.00
Ohio .....	5,980	5,840	4,940	1,580.00	1,640.00	1,560.00
South Carolina .....	99,800	74,900	69,700	971.00	980.00	1,060.00
Texas .....	13,000	4,650	10,200	2,100.00	2,000.00	1,850.00
Virginia .....	5,570	5,220	6,430	683.00	858.00	933.00
West Virginia .....	5,000	5,500	4,100	925.00	852.00	1,300.00
Other States <sup>1</sup> .....	123,470	147,380	138,550	1,160.00	1,230.00	1,250.00
United States .....	567,220	531,690	490,320	788.00	826.00	975.00
<b>Processed</b>						
California						
Clingstone .....	432,000	393,000	369,000	325.00	303.00	348.00
Freestone <sup>2</sup> .....	113,000	98,000	94,000	246.00	233.00	242.00
Georgia .....	1,500	(D)	(D)	500.00	(D)	(D)
South Carolina .....	3,000	2,700	550	408.00	683.00	256.00
Other States <sup>1</sup> .....	13,870	17,590	11,550	274.00	346.00	341.00
United States <sup>3</sup> .....	563,370	511,290	475,100	304.00	292.00	323.00

See footnote(s) at end of table.

--continued



**Peach Utilized Production, Price, and Value by Utilization – States and United States:  
2010-2012 (continued)**

Use and State	Value of utilized production		
	2010 (1,000 dollars)	2011 (1,000 dollars)	2012 (1,000 dollars)
<b>Fresh</b>			
California, Freestone .....	123,488	148,050	181,500
Connecticut .....	2,520	2,310	2,990
Georgia .....	30,710	(D)	(D)
Massachusetts .....	(D)	(D)	4,800
Missouri .....	5,460	6,120	4,320
Ohio .....	9,448	9,578	7,706
South Carolina .....	96,906	73,402	73,882
Texas .....	27,300	9,300	18,870
Virginia .....	3,804	4,479	5,999
West Virginia .....	4,625	4,686	5,330
Other States <sup>1</sup> .....	142,929	181,332	172,551
United States .....	447,190	439,257	477,948
<b>Processed</b>			
California			
Clingstone .....	140,368	119,178	128,397
Freestone <sup>2</sup> .....	25,240	21,969	20,797
Georgia .....	750	(D)	(D)
South Carolina .....	1,224	1,845	141
Other States <sup>1</sup> .....	3,794	6,081	3,940
United States <sup>3</sup> .....	171,376	149,073	153,275

(D) Withheld to avoid disclosing data for individual operations.

<sup>1</sup> Includes data withheld above and/or data for States not listed in this table.

<sup>2</sup> California Freestone quantity and value include dried, price excludes dried.

<sup>3</sup> United States quantity, price, and value include dried.

## Peach Processed Utilization and Price by Use – States and United States: 2010-2012

Use and State	Quantity			Price per ton		
	2010	2011	2012	2010	2011	2012
	(tons)	(tons)	(tons)	(dollars)	(dollars)	(dollars)
<b>Canned</b>						
California						
Clingstone .....	414,000	377,000	352,000	327.00	307.00	347.00
Other States <sup>1</sup> .....	14,470	10,190	12,640	349.00	401.00	275.00
United States .....	428,470	387,190	364,640	328.00	310.00	345.00
<b>Frozen</b>						
California						
Freestone .....	87,600	84,600	75,200	252.00	240.00	245.00
Other States <sup>1</sup> .....	16,800	16,000	15,010	342.00	402.00	408.00
United States .....	104,400	100,600	90,210	266.00	266.00	272.00
<b>Dried</b>						
California						
Freestone .....	12,700	4,600	9,800	44.00	42.00	41.00
United States .....	12,700	4,600	9,800	44.00	42.00	41.00
<b>Other <sup>2</sup></b>						
United States .....	17,800	18,900	10,450	144.00	124.00	263.00

<sup>1</sup> Includes data withheld above and/or data for States not listed in this table.

<sup>2</sup> Pickled, wine, brandy, juice, and baby food.

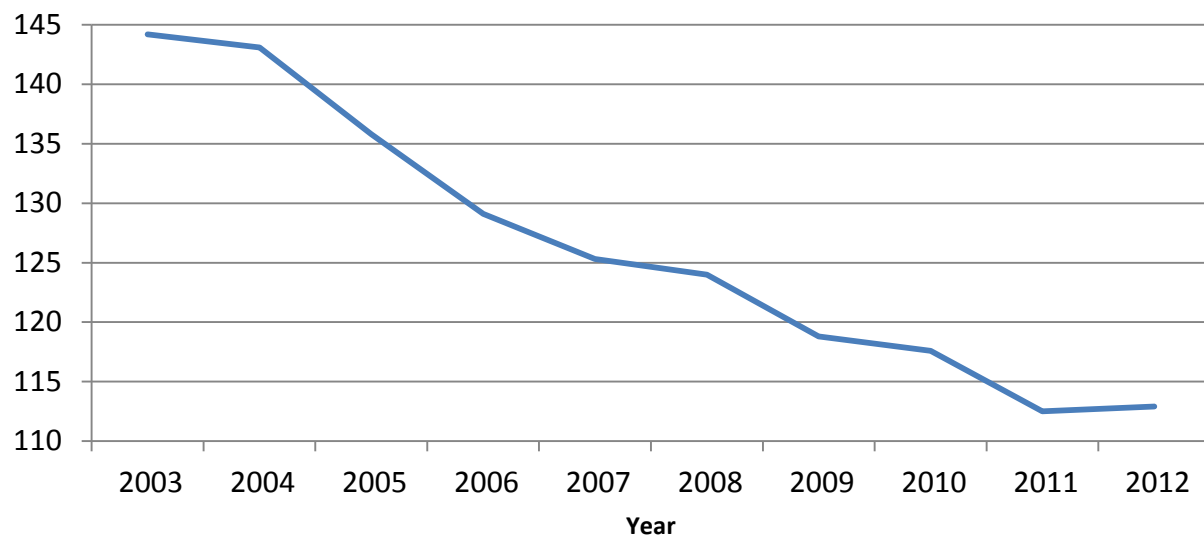
## Unutilized Peach Production – States and United States: 2010-2012

Crop and State	Unharvested production			Harvested not sold		
	2010	2011	2012	2010	2011	2012
	(tons)	(tons)	(tons)	(tons)	(tons)	(tons)
Alabama .....	1,200	300	1,450	300	100	50
Arkansas .....	150	20	130	20	20	80
Colorado .....	1,500	-	1,000	500	800	-
Connecticut .....	-	100	50	-	-	-
Georgia .....	300	300	200	1,200	2,100	2,000
Idaho .....	-	-	-	900	900	800
Illinois .....	560	330	190	960	1,060	220
Maryland .....	-	-	30	10	10	50
Massachusetts .....	-	-	50	-	-	-
Michigan .....	170	250	-	-	-	-
New Jersey .....	2,000	2,000	-	-	-	-
New York .....	-	-	-	50	50	50
North Carolina .....	30	50	150	-	100	50
Ohio .....	130	130	10	130	60	10
Pennsylvania .....	100	400	210	300	-	240
South Carolina .....	1,100	4,400	3,700	6,100	13,000	1,050
Texas .....	600	370	360	400	280	440
Utah .....	30	160	60	30	40	40
Virginia .....	-	500	70	640	780	-
West Virginia .....	150	150	10	150	50	90
United States .....	8,020	9,460	7,670	11,690	19,350	5,170

- Represents zero.

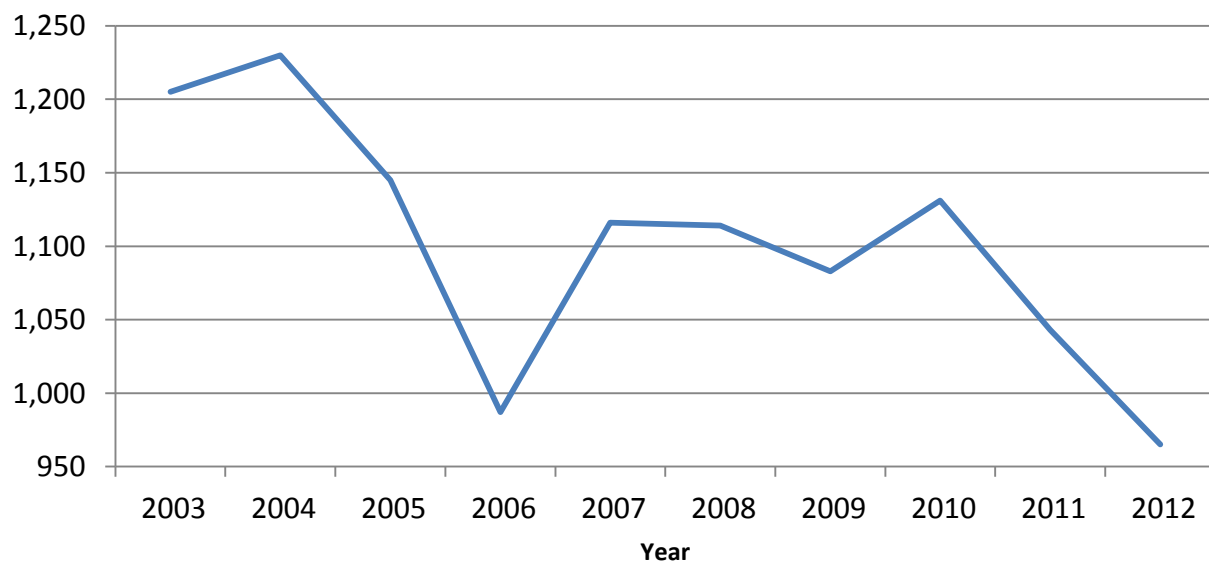
## Peach Bearing Acreage United States: 2003-2012

(000) Acres



## Peach Utilized Production United States: 2003-2012

(000) Tons



**All Pear Bearing Acreage, Yield, Production, Utilization, Price, and Value – States and United States: 2010-2012**

State and year	Bearing acreage	Yield per acre <sup>1</sup>	Production		Utilization	
			Total	Utilized	Fresh	Processed
	(acres)	(tons)	(tons)	(tons)	(tons)	(tons)
California						
2010 .....	14,000	15.70	220,000	220,000	(D)	(D)
2011 .....	14,000	18.00	252,000	252,000	(D)	(D)
2012 .....	14,000	15.40	215,000	215,000	(D)	(D)
Michigan						
2010 .....	800	1.13	900	900	(D)	(D)
2011 .....	700	6.29	4,400	4,400	(D)	(D)
2012 .....	700	0.06	40	40	(D)	(D)
New York						
2010 .....	1,200	6.92	8,300	8,200	(D)	(D)
2011 .....	1,200	10.10	12,100	11,600	(D)	(D)
2012 .....	1,200	2.58	3,100	3,100	(D)	(D)
Oregon						
2010 .....	16,200	11.90	192,000	192,000	(D)	(D)
2011 .....	16,200	14.00	227,000	227,000	(D)	(D)
2012 .....	16,200	15.30	248,000	248,000	(D)	(D)
Pennsylvania						
2010 .....	800	3.00	2,400	2,300	(D)	(D)
2011 .....	800	2.78	2,220	2,110	(D)	(D)
2012 .....	800	1.38	1,100	990	(D)	(D)
Washington						
2010 .....	23,000	17.00	390,000	390,000	(D)	(D)
2011 .....	21,500	21.80	468,000	468,000	(D)	(D)
2012 .....	21,500	18.20	391,000	391,000	(D)	(D)
United States <sup>2</sup>						
2010 .....	56,000	14.50	813,600	813,400	531,430	281,970
2011 .....	54,400	17.80	965,720	965,110	643,710	321,400
2012 .....	54,400	15.80	858,240	858,130	558,320	299,810

See footnote(s) at end of table.

--continued

**All Pear Bearing Acreage, Yield, Production, Utilization, Price, and Value – States and United States: 2010-2012 (continued)**

State and year	Price per ton			Value of production		
	Fresh	Processed excludes dried	All	Fresh	Processed includes dried	All
	(dollars)	(dollars)	(dollars)	(1,000 dollars)	(1,000 dollars)	(1,000 dollars)
California						
2010 .....	(D)	(D)	435.00	(D)	(D)	95,690
2011 .....	(D)	(D)	388.00	(D)	(D)	97,805
2012 .....	(D)	(D)	437.00	(D)	(D)	93,977
Michigan						
2010 .....	(D)	(D)	348.00	(D)	(D)	313
2011 .....	(D)	(D)	275.00	(D)	(D)	1,209
2012 .....	(D)	(D)	625.00	(D)	(D)	25
New York						
2010 .....	(D)	(D)	601.00	(D)	(D)	4,932
2011 .....	(D)	(D)	600.00	(D)	(D)	6,956
2012 .....	(D)	(D)	758.00	(D)	(D)	2,350
Oregon						
2010 .....	(D)	(D)	499.00	(D)	(D)	95,896
2011 .....	(D)	(D)	341.00	(D)	(D)	77,406
2012 .....	(D)	(D)	541.00	(D)	(D)	134,241
Pennsylvania						
2010 .....	(D)	(D)	1,100.00	(D)	(D)	2,533
2011 .....	(D)	(D)	995.00	(D)	(D)	2,100
2012 .....	(D)	(D)	794.00	(D)	(D)	786
Washington						
2010 .....	(D)	(D)	481.00	(D)	(D)	187,591
2011 .....	(D)	(D)	387.00	(D)	(D)	181,076
2012 .....	(D)	(D)	526.00	(D)	(D)	205,734
United States <sup>2</sup>						
2010 .....	599.00	243.00	476.00	318,528	68,427	386,955
2011 .....	451.00	237.00	380.00	290,233	76,319	366,552
2012 .....	656.00	237.00	509.00	366,006	71,107	437,113

(D) Withheld to avoid disclosing data for individual operations.

<sup>1</sup> Yield is based on total production.

<sup>2</sup> Processed mostly canned, but includes small quantities dried and other uses not published separately to avoid disclosure of individual operations.

**Unutilized Pear Production – States and United States: 2010-2012**

State	Unharvested production			Harvested not sold		
	2010	2011	2012	2010	2011	2012
	(tons)	(tons)	(tons)	(tons)	(tons)	(tons)
New York .....	100	500	-	-	-	-
Pennsylvania .....	-	10	20	100	100	90
United States .....	100	510	20	100	100	90

- Represents zero.

**Pear Bearing Acreage, Yield, Production, Utilization, Price, and Value by Type – States and United States: 2010-2012**

Type, State and year	Bearing acreage	Yield per acre <sup>1</sup>	Production		Utilization	
			Total	Utilized	Fresh	Processed
	(acres)	(tons)	(tons)	(tons)	(tons)	(tons)
<b>Bartlett</b> <sup>2</sup>						
California						
2010 .....	10,000	17.00	170,000	170,000	55,000	115,000
2011 .....	10,000	19.50	195,000	195,000	64,000	131,000
2012 .....	10,000	16.50	165,000	165,000	55,000	110,000
Oregon						
2010 .....	4,200	11.20	47,000	47,000	31,000	16,000
2011 .....	4,200	11.20	47,000	47,000	29,000	18,000
2012 .....	4,200	14.50	61,000	61,000	30,000	31,000
Washington						
2010 .....	10,000	16.80	168,000	168,000	63,000	105,000
2011 .....	9,500	19.80	188,000	188,000	68,000	120,000
2012 .....	9,500	19.10	181,000	181,000	76,000	105,000
United States						
2010 .....	24,200	15.90	385,000	385,000	149,000	236,000
2011 .....	23,700	18.10	430,000	430,000	161,000	269,000
2012 .....	23,700	17.20	407,000	407,000	161,000	246,000
<b>Other</b> <sup>3</sup>						
California						
2010 .....	4,000	12.50	50,000	50,000	(D)	(D)
2011 .....	4,000	14.30	57,000	57,000	(D)	(D)
2012 .....	4,000	12.50	50,000	50,000	(D)	(D)
Oregon						
2010 .....	12,000	12.10	145,000	145,000	(D)	(D)
2011 .....	12,000	15.00	180,000	180,000	(D)	(D)
2012 .....	12,000	15.60	187,000	187,000	(D)	(D)
Washington						
2010 .....	13,000	17.10	222,000	222,000	(D)	(D)
2011 .....	12,000	23.30	280,000	280,000	(D)	(D)
2012 .....	12,000	17.50	210,000	210,000	(D)	(D)
United States						
2010 .....	29,000	14.40	417,000	417,000	373,000	44,000
2011 .....	28,000	18.50	517,000	517,000	469,000	48,000
2012 .....	28,000	16.00	447,000	447,000	393,500	53,500

See footnote(s) at end of table.

--continued

**Pear Bearing Acreage, Yield, Production, Utilization, Price, and Value by Type – States and United States: 2010-2012 (continued)**

Type, State and year	Price per ton			Value of production		
	Fresh	Processed excludes dried	All	Fresh	Processed includes dried	All
	(dollars)	(dollars)	(dollars)	(1,000 dollars)	(1,000 dollars)	(1,000 dollars)
<b>Bartlett</b> <sup>2</sup>						
California						
2010 .....	501.00	321.00	379.00	27,555	36,825	64,380
2011 .....	340.00	298.00	311.00	21,760	38,949	60,709
2012 .....	470.00	322.00	371.00	25,850	35,332	61,182
Oregon						
2010 .....	575.00	248.00	464.00	17,825	3,971	21,796
2011 .....	495.00	248.00	400.00	14,355	4,461	18,816
2012 .....	671.00	245.00	455.00	20,130	7,606	27,736
Washington						
2010 .....	583.00	239.00	368.00	36,729	25,054	61,783
2011 .....	544.00	242.00	351.00	36,992	29,082	66,074
2012 .....	656.00	235.00	412.00	49,856	24,668	74,524
United States						
2010 .....	551.00	279.00	384.00	82,109	65,850	147,959
2011 .....	454.00	270.00	339.00	73,107	72,492	145,599
2012 .....	595.00	275.00	402.00	95,836	67,606	163,442
<b>Other</b> <sup>3</sup>						
California						
2010 .....	(D)	(D)	626.00	(D)	(D)	31,310
2011 .....	(D)	(D)	651.00	(D)	(D)	37,096
2012 .....	(D)	(D)	656.00	(D)	(D)	32,795
Oregon						
2010 .....	(D)	(D)	511.00	(D)	(D)	74,100
2011 .....	(D)	(D)	326.00	(D)	(D)	58,590
2012 .....	(D)	(D)	570.00	(D)	(D)	106,505
Washington						
2010 .....	(D)	(D)	567.00	(D)	(D)	125,808
2011 .....	(D)	(D)	411.00	(D)	(D)	115,002
2012 .....	(D)	(D)	625.00	(D)	(D)	131,210
United States						
2010 .....	614.00	46.40	554.00	229,176	2,042	231,218
2011 .....	444.00	52.60	408.00	208,165	2,523	210,688
2012 .....	679.00	63.60	605.00	267,105	3,405	270,510

(D) Withheld to avoid disclosing data for individual operations.

<sup>1</sup> Yield is based on total production.

<sup>2</sup> Processed mostly canned, but includes small quantities dried and other uses not published separately to avoid disclosure of individual operations.

<sup>3</sup> Processed mostly juice, but includes small quantities canned and other uses not published separately to avoid disclosure of individual operations.

## Tropical Fruit Acreage Harvested, Yield, Utilized Production, Utilization, Price, and Value by Crop – Hawaii: 2010-2012

[Blank cells indicate estimation period has not yet begun]

Crop and year	Acreage harvested	Yield per acre	Utilized production	Utilization		
				Fresh	Processed	
	(acres)	(1,000 pounds)	(1,000 pounds)	(1,000 pounds)	(1,000 pounds)	
<b>Bananas</b>						
2010 .....	1,100	16.2	17,800	17,800	(NA)	
2011 .....	1,000	17.4	17,400	17,400	(NA)	
2012 .....						
<b>Guavas</b>						
2010 .....	115	11.3	1,300	(NA)	1,300	
2011 .....	110	17.3	1,900	(NA)	1,900	
2012 .....						
<b>Papayas</b>						
2010 .....	1,350	22.3	30,100	29,200	900	
2011 .....	1,300	22.0	28,600	27,700	900	
2012 .....						
Crop and year	Price			Value of production		
	Fresh	Processed	All	Fresh	Processed	Total
	(dollars per pound)	(dollars per pound)	(dollars per pound)	(1,000 dollars)	(1,000 dollars)	(1,000 dollars)
<b>Bananas</b>						
2010 .....	0.600	(X)	0.600	10,680	(X)	10,680
2011 .....	0.650	(X)	0.650	11,310	(X)	11,310
2012 .....						
<b>Guavas</b>						
2010 .....	(X)	0.169	0.169	(X)	220	220
2011 .....	(X)	0.170	0.170	(X)	323	323
2012 .....						
<b>Papayas</b>						
2010 .....	0.380	0.030	0.370	11,096	27	11,123
2011 .....	0.350	0.030	0.340	9,695	27	9,722
2012 .....						

(NA) Not available.  
(X) Not applicable.



**This page intentionally left blank.**

## Apple for Fresh Use Monthly Average Prices Received – States and United States: July 2011-August 2012

[Equivalent packinghouse-door returns for California, Michigan, New York, and Washington; price at point of first sale for other States. Prices for July and August 2012 are preliminary for all States and the United States except Washington. These two months represent the start of the 2012 crop marketing season in most States, but in Washington they are the final months of the 2011 crop marketing season]

State	2011						2012
	July	August	September	October	November	December	January
	(dollars per pound)	(dollars per pound)	(dollars per pound)	(dollars per pound)	(dollars per pound)	(dollars per pound)	(dollars per pound)
California .....	(NA)	0.634	(S)	0.481	(NA)	(NA)	(NA)
Michigan .....	(NA)	(NA)	0.420	0.385	0.350	0.350	0.320
New York .....	(NA)	(NA)	0.393	0.376	0.363	0.359	0.314
Ohio .....	0.640	0.510	0.490	0.490	0.430	0.420	0.450
Pennsylvania .....	(NA)	(S)	(S)	(S)	0.306	0.285	(S)
Virginia .....	(NA)	(NA)	0.430	0.400	0.400	0.330	0.320
Washington .....	0.330	0.422	0.524	0.444	0.433	0.380	0.373
United States .....	0.358	0.458	0.421	0.431	0.344	0.302	0.320

State	2012						
	February	March	April	May	June	July	August
	(dollars per pound)	(dollars per pound)	(dollars per pound)	(dollars per pound)	(dollars per pound)	(dollars per pound)	(dollars per pound)
California .....	(NA)	(NA)	(NA)	(NA)	(NA)	(NA)	0.756
Michigan .....	0.320	0.320	0.300	0.300	(NA)	(NA)	(NA)
New York .....	0.300	0.298	0.285	0.285	0.323	(NA)	(NA)
Ohio .....	0.400	0.470	0.520	0.520	0.670	0.590	0.590
Pennsylvania .....	0.288	0.402	(NA)	(NA)	(NA)	(NA)	0.526
Virginia .....	0.350	0.350	(NA)	(NA)	(NA)	(NA)	(NA)
Washington .....	0.355	0.338	0.329	0.351	0.390	0.419	0.490
United States .....	0.306	0.332	0.300	0.300	0.384	0.419	0.529

(NA) Not available.

(S) Insufficient number of reports to establish an estimate.

## Apples for Fresh Use Monthly Average Prices Received – United States: July 2008 - December 2012

[Equivalent packinghouse door returns for California, Michigan, New York, and Washington]

Year	Jul	Aug	Sep	Oct	Nov	Dec	Jan <sup>1</sup>	Feb	Mar	Apr	May	Jun
	(\$/lb)	(\$/lb)	(\$/lb)	(\$/lb)	(\$/lb)	(\$/lb)	(\$/lb)	(\$/lb)	(\$/lb)	(\$/lb)	(\$/lb)	(\$/lb)
2008 .....	0.446	0.537	0.506	0.425	0.360	0.293	0.272	0.237	0.215	0.204	0.187	0.181
2009 .....	0.172	0.237	0.337	0.274	0.256	0.227	0.218	0.243	0.220	0.209	0.229	0.208
2010 .....	0.299	0.291	0.324	0.332	0.303	0.268	0.251	0.238	0.268	0.269	0.277	0.278
2011 .....	0.358	0.458	0.421	0.431	0.344	0.302	0.320	0.306	0.332	0.300	0.300	0.384
2012 .....	0.419	0.529	0.616	0.535	0.479	0.474						

<sup>1</sup> January of the following year.

## Grapes for Fresh Use Monthly Average Prices Received – United States: May 2008 - December 2012

[Equivalent packinghouse door returns]

Year	May	June	July	August	September	October	November	December
	(dollars per ton)	(dollars per ton)	(dollars per ton)	(dollars per ton)	(dollars per ton)	(dollars per ton)	(dollars per ton)	(dollars per ton)
2008 .....	420	590	660	530	480	370	360	300
2009 .....	1,380	1,120	610	310	470	630	630	1,220
2010 .....	(S)	650	460	430	420	430	500	750
2011 .....	(S)	1,460	1,480	960	820	790	980	1,040
2012 .....	(S)	1,730	1,030	980	1,130	1,540	1,770	1,780

(S) Insufficient number of reports to establish an estimate.

## Peaches for Fresh Use Monthly Average Prices Received – United States: May 2008 - September 2012

[Equivalent packinghouse door returns for California and Washington; price at point of first sale for other States]

State	May	June	July	August	September
	(dollars per ton)	(dollars per ton)	(dollars per ton)	(dollars per ton)	(dollars per ton)
2008 .....	960	537	485	510	468
2009 .....	846	794	644	676	655
2010 .....	1,080	587	573	568	506
2011 .....	1,290	661	662	711	564
2012 .....	1,100	836	790	737	689

## Pears for Fresh Use Monthly Average Prices Received – United States: July 2008 - December 2012

[Equivalent packinghouse-door returns for California, New York, and Washington; price at point of first sale for other States]

Year	Jul	Aug	Sep	Oct	Nov	Dec	Jan <sup>1</sup>	Feb	Mar	Apr	May	Jun
	(\$/ton)	(\$/ton)	(\$/ton)	(\$/ton)	(\$/ton)	(\$/ton)	(\$/ton)	(\$/ton)	(\$/ton)	(\$/ton)	(\$/ton)	(\$/ton)
2008 .....	638	546	543	628	582	574	539	473	452	462	518	642
2009 .....	537	424	383	481	449	398	381	368	350	426	533	640
2010 .....	719	555	550	622	548	587	639	636	625	599	571	565
2011 .....	561	576	483	511	494	453	428	386	301	286	353	594
2012 .....	673	583	601	692	686	713						

<sup>1</sup> January of the following year.

## Tree Nut Bearing Acreage, Yield, Production, Price, and Value by Crop – States: 2010-2012

[Blank cells indicate estimation period has not yet begun]

Crop, State, and year	Bearing acreage	Yield per acre <sup>1</sup>	Utilized production	Price per unit	Value of utilized production
	(acres)	(tons)	(tons)	(dollars per ton)	(1,000 dollars)
<b>English walnuts, in-shell</b>					
California					
2010 .....	237,000	2.13	504,000	2,040	1,028,160
2011 .....	245,000	1.88	461,000	2,900	1,336,900
2012 .....	245,000	1.92	470,000		
<b>Hazelnuts, in-shell</b>					
Oregon					
2010 .....	29,000	0.97	28,000	2,410	67,480
2011 .....	28,500	1.35	38,500	2,330	89,705
2012 .....	29,000	1.20	34,700	1,830	63,420
	(acres)	(pounds)	(1,000 pounds)	(dollars per pound)	(1,000 dollars)
<b>Almonds, shelled <sup>2 3</sup></b>					
California					
2010 .....	740,000	2,220	1,640,000	1.790	2,903,380
2011 .....	760,000	2,670	2,030,000	1.990	4,007,860
2012 .....	780,000	2,560	2,000,000	2.200	4,347,200
<b>Macadamia nuts, in-shell</b>					
Hawaii					
2010 .....	15,000	2,670	40,000	0.750	30,000
2011 .....	15,000	3,270	49,000	0.780	38,220
2012 .....	15,000	2,930	44,000	0.800	35,200
<b>Pistachios, in-shell</b>					
California					
2010 .....	137,000	3,810	522,000	2.220	1,158,840
2011 .....	153,000	2,900	444,000	1.980	879,120
2012 .....	178,000	3,100	551,000	2.020	1,113,020

<sup>1</sup> Yield is based on utilized production.

<sup>2</sup> Price and value are based on the edible portion of the crop only. Production includes inedible quantities of no value as follows: 2010 - 18.0 million pounds; 2011 - 16.0 million pounds; 2012 - 24.0 million pounds.

<sup>3</sup> Shelling ratios are: 2010 - 0.580; 2011 - 0.596; 2012 - 0.578.

## Tree Nut Utilization and Meat Production by Crop – States and United States: 2010-2012

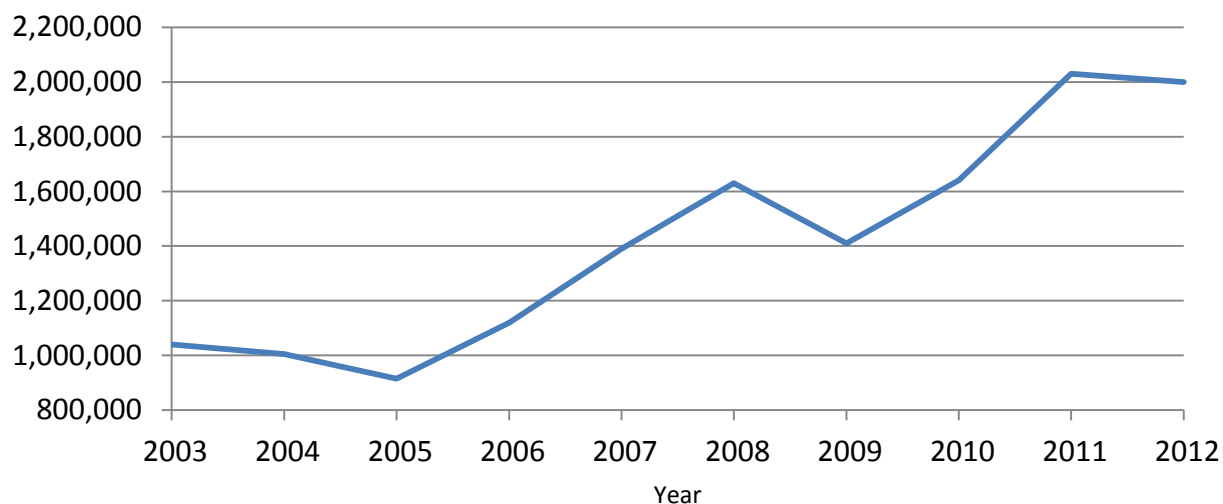
[Blank cells indicate estimation period has not yet begun. Estimates for 2012 will be published on July 17, 2013.]

Crop, State, and year	Utilized production		Meat production of nuts sold shelled
	Sold in-shell	Sold shelled <sup>1</sup>	
	(tons)	(tons)	(tons)
<b>English walnuts</b>			
California			
2010 .....	141,000	363,000	159,000
2011 .....	125,000	336,000	146,000
2012 .....			
<b>Hazelnuts</b>			
Oregon			
2010 .....	20,050	7,950	3,100
2011 .....	29,300	9,200	3,730
2012 .....			
	(1,000 pounds)	(1,000 pounds)	(1,000 pounds)
<b>Pecans</b>			
United States			
2010 .....	89,884	203,856	97,443
2011 .....	49,355	220,345	101,799
2012 .....			
<b>Pistachios</b>			
California			
2010 .....	378,000	144,000	69,000
2011 .....	341,000	103,000	51,500
2012 .....	464,000	87,000	43,500

<sup>1</sup> In-shell basis.

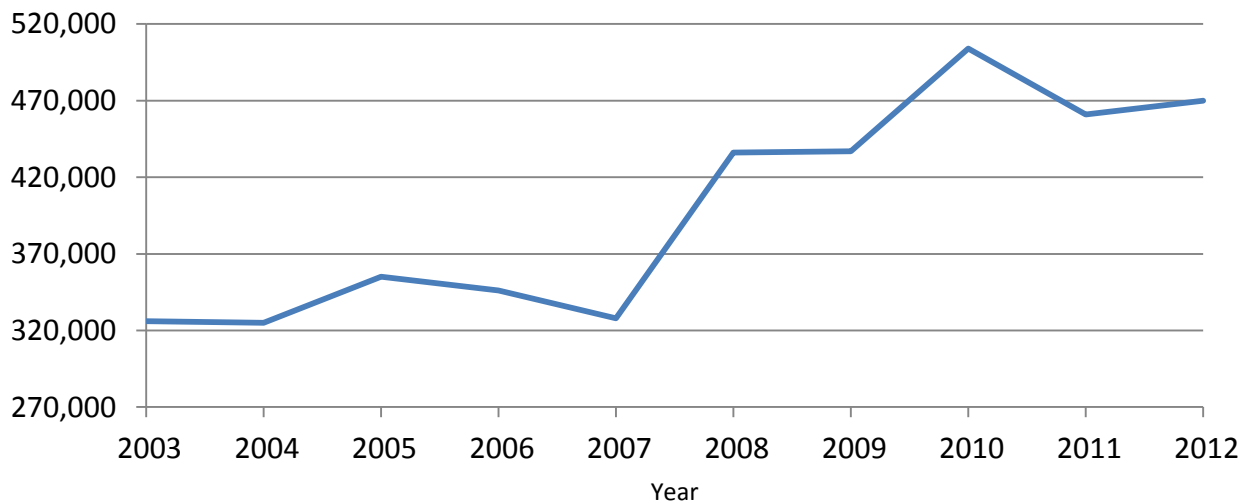
## California Almonds Utilized Production United States: 2003-2012

(000) Pounds  
Shelled basis



## California English Walnuts Utilized Production United States: 2003-2012

Tons  
In-shell basis



## Pecan Production, Price, and Value by Variety – States and United States: 2010-2012

Variety and State	Utilized production (In-shell basis)			Price per pound			Value of utilized production		
	2010 (1,000 pounds)	2011 (1,000 pounds)	2012 (1,000 pounds)	2010 (dollars)	2011 (dollars)	2012 (dollars)	2010 (1,000 dollars)	2011 (1,000 dollars)	2012 (1,000 dollars)
<b>Improved varieties <sup>1</sup></b>									
Alabama .....	4,500	13,000	3,400	1.750	1.830	1.400	7,875	23,790	4,760
Arizona .....	22,000	18,500	20,000	2.800	2.800	1.600	61,600	51,800	32,000
Arkansas .....	780	1,300	1,600	2.000	1.980	1.540	1,560	2,574	2,464
California .....	5,700	3,700	4,800	2.540	2.670	1.580	14,478	9,879	7,584
Florida .....	1,200	1,400	1,100	1.900	1.850	1.100	2,280	2,590	1,210
Georgia .....	70,000	92,000	96,000	2.200	2.650	1.940	154,000	243,800	186,240
Louisiana .....	3,500	2,500	5,000	2.000	2.200	1.300	7,000	5,500	6,500
Mississippi .....	1,400	3,400	2,000	1.600	1.800	1.250	2,240	6,120	2,500
Missouri .....	180	190	200	2.200	1.900	1.450	396	361	290
New Mexico .....	66,000	61,000	65,000	2.830	2.670	1.700	186,780	162,870	110,500
Oklahoma .....	6,000	2,000	5,000	2.100	2.400	1.550	12,600	4,800	7,750
South Carolina .....	1,300	2,040	1,500	1.800	2.000	1.750	2,340	4,080	2,625
Texas .....	50,000	26,000	42,000	2.500	2.650	1.520	125,000	68,900	63,840
United States .....	232,560	227,030	247,600	2.490	2.590	1.730	578,149	587,064	428,263
<b>Native and seedling</b>									
Alabama .....	500	6,000	600	1.180	1.310	0.830	590	7,860	498
Arkansas .....	320	1,200	600	1.620	1.580	0.850	518	1,896	510
Florida .....	300	2,600	900	1.100	1.400	0.750	330	3,640	675
Georgia .....	5,000	10,000	4,000	1.700	2.080	1.220	8,500	20,800	4,880
Kansas .....	3,000	1,500	3,000	1.750	1.800	1.350	5,250	2,700	4,050
Louisiana .....	16,500	7,500	10,000	1.350	1.400	0.700	22,275	10,500	7,000
Mississippi .....	700	1,600	500	1.100	1.400	0.850	770	2,240	425
Missouri .....	660	1,310	2,300	1.600	1.750	0.950	1,056	2,293	2,185
Oklahoma .....	14,000	4,000	20,000	1.650	1.650	0.850	23,100	6,600	17,000
South Carolina .....	200	960	300	1.450	1.350	1.250	290	1,296	375
Texas .....	20,000	6,000	13,000	1.700	1.500	0.840	34,000	9,000	10,920
United States .....	61,180	42,670	55,200	1.580	1.610	0.879	96,679	68,825	48,518
<b>All pecans</b>									
Alabama .....	5,000	19,000	4,000	1.690	1.670	1.310	8,465	31,650	5,258
Arizona .....	22,000	18,500	20,000	2.800	2.800	1.600	61,600	51,800	32,000
Arkansas .....	1,100	2,500	2,200	1.890	1.790	1.350	2,078	4,470	2,974
California .....	5,700	3,700	4,800	2.540	2.670	1.580	14,478	9,879	7,584
Florida .....	1,500	4,000	2,000	1.740	1.560	0.943	2,610	6,230	1,885
Georgia .....	75,000	102,000	100,000	2.170	2.590	1.910	162,500	264,600	191,120
Kansas .....	3,000	1,500	3,000	1.750	1.800	1.350	5,250	2,700	4,050
Louisiana .....	20,000	10,000	15,000	1.460	1.600	0.900	29,275	16,000	13,500
Mississippi .....	2,100	5,000	2,500	1.430	1.670	1.170	3,010	8,360	2,925
Missouri .....	840	1,500	2,500	1.730	1.770	0.990	1,452	2,654	2,475
New Mexico .....	66,000	61,000	65,000	2.830	2.670	1.700	186,780	162,870	110,500
Oklahoma .....	20,000	6,000	25,000	1.790	1.900	0.990	35,700	11,400	24,750
South Carolina .....	1,500	3,000	1,800	1.750	1.790	1.670	2,630	5,376	3,000
Texas .....	70,000	32,000	55,000	2.270	2.430	1.360	159,000	77,900	74,760
United States .....	293,740	269,700	302,800	2.300	2.430	1.570	674,828	655,889	476,781

<sup>1</sup> Budded, grafted, or topworked varieties.

## Crop Comments

**Apples:** Utilized apple production for 2012 is estimated at 8.99 billion pounds, down 3 percent from 2011. New York's apple growers reported that their crop was negatively impacted by early warm weather in March which prompted budding, followed by freezing in April and drought conditions in June and July. The Michigan apple crop potential was drastically diminished from a series of severe frosts in April. This followed abnormally high temperatures in March that had pushed budding far ahead of normal. As of mid-December, the harvest was two to three weeks ahead of normal due to the hot summer and small crop. Washington apple growers reported good growing conditions, without losses from freezes or frost, which allowed for more picking days and more fruit being harvested this year.

**Grapes:** Utilized grape production for 2012 is estimated at 7.34 million tons, down 1 percent from 2011. The California crop, which accounts for 91 percent of the 2012 United States utilized grape production, is down slightly from the previous year. The most notable decreases in utilized production were in Michigan, New York, and Pennsylvania where the crop experienced unusually warm temperatures in March followed by a devastating freeze in April. In New York, the utilized production was the lowest since 1977.

The grape crop in California developed well in 2012 due to the warm and dry weather. Yields for wine grapes were higher than last year's frost damaged crop in most of the growing region.

**Peaches:** Utilized peach production for 2012 is estimated at 965,420 tons, down 7 percent from the previous year. The California crop, accounting for 74 percent of the United States utilized peach production, is down 8 percent from 2011.

In California, there were some reports of hail damage during the spring, which resulted in significant crop loss. An adequate number of chilling hours benefited the Freestone crop. There were some reports of hail damage during the spring, which resulted in significant crop loss.

Higher labor costs and a lack of workers to thin the California Clingstone crop were a big concern for growers as the crop required a great deal of thinning. This year's crop deliveries represented the third smallest crop in fifty years. The largest yield decrease occurred in the early varieties, as yields improved as the harvest progressed. Sizes were reported to be small, resulting in lower production.

In Georgia, drought conditions during most of the growing season lowered peach production from a year ago. Many producers reported a lack of chill hours and hail storms negatively impacted this season's crop.

In South Carolina, harvest started about two weeks early. A mild winter produced inadequate chill hours and subsequent lower yields from 2011. Scattered hail storms were also reported during the season which did some damage, especially for "Upstate" producers. Fruit was of good quality, but slightly undersized.

In New Jersey, growing conditions were ideal throughout the spring. Tree bloom and fruit sets were earlier than usual. As a result, producers began harvesting early and mid-season varieties in June. Peach sizes and quality rated good to excellent. In Michigan, hot weather in March caused peaches to blossom early. In April, several frosts killed most blossoms across the state, resulting in about 60 percent of peach growers without a crop.

**Pears:** Utilized pear production for 2012 is estimated at 858,130 tons, down 11 percent from the revised 2011 estimate. Five of the six estimating States (California, Michigan, New York, Pennsylvania, and Washington) showed decreased production from last season.

Washington producers experienced mild spring weather conditions with no losses from frost. Several producers noted reduced production of D'Anjou and Bosc varieties due to poor weather during pollination. Reports of hail and wind damage from June and July storms were common. Production further declined due to fire blight.

In California rain and cool weather during the pollination period affected yields in some areas. Harvest began in July and continued into October. The quality of the crop was reported to be good.



Nearly all of Michigan's crop was destroyed by April freezes. Only 15 percent of growers reported having a crop. In New York, frost was a major issue, which negatively impacted this year's crop. March was unusually warm, causing early budding, and was followed by several frosts in April. Many producers reported complete or near complete losses due to these weather conditions. In Pennsylvania, the crop was significantly impacted by frost and pests. Adverse weather impacting the pear crop was widespread with few orchards not suffering.

In Oregon, grower comments varied from a down year to fantastic one. Growers reported good pollination weather, decent bloom weather, and very good growing conditions. Fire blight issues and some frost damage were reported.

**Tree nuts:** Utilized tree nut production for crop year 2012 is 2.68 million tons (in-shell basis), 4 percent above the previous year. Almond utilized crop production, at 1.73 million tons is down 2 percent from 2011. Walnut utilized production in 2012, at 470,000 tons, is up 2 percent from the previous year. Pistachio utilized production, at 275,500 tons is 24 percent more than 2011. Pecan utilized production in 2012 is estimated at 151,400 tons, a 12 percent increase from 2011. The hazelnut crop, at 34,700 tons, is 1 percent below the previous year. Macadamia nut production is 22,000 tons, down 10 percent from 2011.

Value of United States utilized nut production in 2012 is 7.40 billion dollars, up 6 percent from the 2011 value. The 2012 utilized almond crop is valued at 4.35 billion dollars, 8 percent more than the previous year. Pistachio utilized crop value for 2012, at 1.11 billion dollars, is up 27 percent from previous year. The value of the 2012 utilized pecan crop decreased 27 percent to 477 million dollars. Hazelnut utilized crop value, at 63.4 million dollars, is 29 percent below last year. The 2012 utilized macadamia nut crop is valued at 35.2 million dollars, down 8 percent from 2011.

## Definition of Terms

**Bearing acreage:** An orchard, grove, or vineyard is considered to be of bearing age when it can normally be expected to produce a commercially significant quantity of the crop. Bearing age is a function of many factors including variety, rootstock, year planted, etc.

**Apple crop:** Apple production estimates are published only for commercial orchards, according to the laws governing crop production reports (7 U.S.C 411b). Commercial orchards, under these laws, are defined as orchards of 100 or more bearing trees.

**Harvested not sold:** Fruit of marketable quality that was picked but not sold for various reasons up to 2 percent of total production is considered normal seasonal loss and is excluded from total production. Reported values are above and beyond these normal seasonal losses.

**Total production:** The quantity of a crop actually harvested plus quantities which would have been acceptable for fresh market or processing but were not harvested because of economic or natural reasons are included in production estimates.

**Unutilized production:** The difference between total and utilized production, which is marketable fruit not harvested for economic or natural reasons and harvested fruit not sold or utilized, is unutilized production.

**Unharvested production:** Marketable fruit produced, but not harvested for various reasons, is unharvested production. Unharvested amounts up to 2 percent of total production are considered normal seasonal losses and are excluded from total production. Published estimates of unharvested production represent quantities above and beyond these normal seasonal losses.

**Utilization:** These estimates refer to the first utilization, not necessarily the final utilization of a crop. For example, frozen fruit includes some fruit that may be later used for making preserves. Grade-outs for fresh market fruit which are processed are included in the processing quantity. Fruit graded-out from canning or freezing and utilized for juice is included with juice.

**Utilized production:** The amount of a crop sold plus the quantities used at home or held in storage represents utilized production.

**Yield per acre:** Unless otherwise stated, yield per acre is based on total production.

## Price and Value Definitions

**Price:** Except where specified as monthly, prices in this report represent the Market Year Average (MYA) price. For a crop sold for both fresh market and processing, the total crop MYA is a weighted average of the fresh and processing prices.

Prices for fresh fruit represent the average price producers receive at the point of first sale. This is commonly referred to as the average price as sold. The exception is fresh fruit sales in California, Michigan (apples only), New York (apples only), and Washington which are equivalent returns at packinghouse door.

Prices for fruit sold for processing are equivalent returns for fruit delivered to the processing plant door except for cranberries, California olives, and freestone peaches, which are priced at the first delivery point.

**Value:** Crop value estimates in this report cover the marketing season or crop year and should not be confused with cash receipts which are based on a calendar year.

## State MYA Price and Value Computations

### Fresh Market Value

Fresh Market MYA \* Fresh Market Utilization

### Processed Value

Processed MYA \* Processed Utilization

### "All" Value

Fresh Market Value + Processed Value

### "All" MYA

"All" Value / "All" Utilization

For commodities with components not identified by market channel, substitute breakdown name for fresh market/processed and use the same procedure.

## United States MYA Price and Value Computations

### Fresh Market MYA

$$\frac{\sum(\text{Fresh Market Value For All States})}{\sum(\text{Fresh Market Utilization For All States})}$$

### Processed MYA

$$\frac{\sum(\text{Processed Value For All States})}{\sum(\text{Processed Utilization For All States})}$$

### "All" MYA

$$\frac{\sum(\text{Value For All States})}{\sum(\text{Utilization For All States})}$$

## **Marketing Seasons for Noncitrus Fruits**

**Apples:** August to June for Eastern States, excluding Georgia, New Jersey, and South Carolina; July to May for Central States, excluding Iowa, Kentucky, Minnesota, Missouri, Tennessee, and Wisconsin; August to June for Western States, excluding Arizona; August to December for all other states.

**Apricots:** May 15 to July 5 for California; June 10 to August 15 for Utah; June 20 to August 1 for Washington.

**Avocados:** November 1 to October for California; June 20 to March 1 for Florida; January 1 to December 31 for Hawaii.

**Bananas:** January 1 to December 31

**Cherries, sweet:** April 25 to June 15 for California; July 20 to August 20 for Montana; June to July for all other States.

**Cherries, tart:** June 25 to August 15

**Cranberries:** September 15 to January 1

**Dates:** August 15 to March 15

**Figs:** June 5 to October 30

**Grapes:** May 25 to July for Table (California); June 5 to July 31 for Raisin (California); August 15 to December 15 for Wine (California and Washington); September 15 to November 1 for Juice (Washington); July to October for all other States.

**Guavas:** January 1 to December 31

**Kiwifruit:** October 1 to May 31

**Nectarines:** April 30 to October 15

**Olives:** August 1 to July 31 for Fresh, Canned, and other processing; December 1 to November 30 for Crushed for Oil

**Papayas:** January 1 to December 31

**Peaches:** July 10 to September 15 for Clingstone (California); April 20 to October 10 for Freestone (California); May to August for Georgia and South Carolina; July to September for all other States.

**Pears:** July to December for Bartlett (California, Oregon, and Washington); July to June for other (California, Oregon, and Washington); August to November for all other States.

**Plums:** May 15 to October 20 for California

**Prunes, dried:** August 20 to April 15 for California

**Prunes and plums:** August 15 to October 15 for Fresh and Canning (Idaho, Michigan, Oregon, and Washington)

## **Marketing Seasons for Tree Nuts**

**Almonds:** August 5 to November 15

**Hazelnuts:** October 1 to November 30

**Macadamia nuts:** July 1 to June 30

**Pecans:** October 1 to March 31

**Pistachios:** September 30 to January 30

**Walnuts:** September 15 to November 10

For detail by States, see Agricultural Handbook No. 729, *Fruits and Tree Nuts: Blooming, Harvesting, and Marketing Dates*, December 2006.

## Statistical Methodology

**Survey Procedures:** Non-probability monthly grower surveys are used to collect crop condition, yield, acreage, and production data. These fruit inquiries are generally mailed surveys during the growing season. Telephone follow-up of mail survey non-respondents is used to ensure adequate coverage. Special grower disposition surveys are conducted at the end of each season to provide additional details about the crop. They provide indications of the quantity used on farms, the quantity sold directly to consumers, unharvested production, and production not sold or utilized. All fruit and nut processors or shellers are also surveyed annually to determine quantity handle, utilization, and the origin of the commodity.

**Estimating Procedures:** Information obtained from the non-citrus fruits and nuts grower surveys along with federal administrative data is used to establish estimates of bearing acres, yield, total production, utilized production, price, and value. These estimates are reviewed for errors, reasonableness, and consistency with historical estimates.

**Revision Policy:** Final survey indications and check data for most non-citrus fruits and nuts are available prior to submitting utilization estimates. As a result revisions are allowed for a few crops in the spring. End-of-season estimates of production are made following harvest and are subject to revision the following year based on a thorough review of all available data.

**Reliability:** To assist users in evaluating the reliability of the January noncitrus fruit total production estimates, the "Root Mean Square Error," a statistical measure based on past performance, is computed. The deviation between the first January total production estimate and the final estimate is expressed as a percentage of the final estimate. The average of squared percentage deviations for the latest 20-year period is computed. The square root of the average becomes statistically the "Root Mean Square Error." Probability statements can be made concerning expected differences in the current estimate relative to the final end-of-season estimate, assuming that factors affecting this year's estimate are not different from those influencing recent years. For example, the "Root Mean Square Error" for the January apple total production estimate is 2.8 percent. This means that chances are 2 out of 3 that the current production estimate will not be above or below the final estimate by more than 2.8 percent. Chances are 9 out of 10 (90 percent confidence level) that the difference will not exceed 4.8 percent.

The following table is included with a 20-year record for selected crops of the differences between the first January total production estimate and the final estimate. Using apples again as an example, changes between the first January estimate and the final estimate during the last 20 years have averaged 108.9 thousand tons, ranging from 2.5 thousand tons to 351.4 thousand tons. The first January estimate has been below the final estimate 6 times and above 14 times. This does not imply that the January estimate this year is likely to understate or overstate the final production.

### Reliability of Selected Noncitrus Fruit Estimates

Crop	Root mean square error		20-year record of differences between initial estimate and final estimate				
	Percent	90 percent confidence interval	Quantity			Years	
			Average	Smallest	Largest	Below final	Above final
			(1,000)	(1,000)	(1,000)	(number)	(number)
Apples ..... tons	2.8	4.8	108.9	2.5	351.4	6	14
Grapes ..... tons	3.9	6.7	197.8	8.6	838.8	17	3
Peaches ..... tons	1.3	2.2	12.0	(Z)	29.9	9	9
Pears ..... tons	3.2	5.5	22.9	1.0	63.9	15	5

(Z) Less than half of the unit shown.

## Information Contacts

Listed below are the commodity statisticians in the Crops Branch of the National Agricultural Statistics Service to contact for additional information. E-mail inquiries may be sent to [nass@nass.usda.gov](mailto:nass@nass.usda.gov)

Lance Honig, Chief, Crops Branch.....	(202) 720-2127
Jorge Garcia-Pratts, Head, Fruits, Vegetables and Special Crops Section.....	(202) 720-2127
Debbie Flippin – Fresh and Processing Vegetables, Onions, Strawberries .....	(202) 720-2157
Fred Granja – Apples, Apricots, Cherries, Plums, Prunes, Tobacco .....	(202) 720-4288
Chris Hawthorn – Citrus, Coffee, Grapes, Sugar Crops, Tropical Fruits .....	(202) 720-5412
Dave Losh – Hops.....	(360) 709-2400
Dan Norris – Austrian Winter Peas, Dry Edible Peas, Lentils, Mint, Mushrooms, Peaches, Pears, Wrinkled Seed Peas, Dry Beans .....	(202) 720-3250
Daphne Schauber – Berries, Cranberries, Potatoes, Sweet Potatoes .....	(202) 720-4285
Erika White – Floriculture, Maple Syrup, Nursery, Tree Nuts .....	(202) 720-4215

## Access to NASS Reports

For your convenience, you may access NASS reports and products the following ways:

- All reports are available electronically, at no cost, on the NASS web site: <http://www.nass.usda.gov>
- Both national and state specific reports are available via a free e-mail subscription. To set-up this free subscription, visit <http://www.nass.usda.gov> and in the “Follow NASS” box under “Receive reports by Email,” click on “National” or “State” to select the reports you would like to receive.

For more information on NASS surveys and reports, call the NASS Agricultural Statistics Hotline at (800) 727-9540, 7:30 a.m. to 4:00 p.m. ET, or e-mail: [nass@nass.usda.gov](mailto:nass@nass.usda.gov).

The United States Department of Agriculture (USDA) prohibits discrimination in all its programs and activities on the basis of race, color, national origin, age, disability, and where applicable, sex, marital status, familial status, parental status, religion, sexual orientation, political beliefs, genetic information, reprisal, or because all or a part of an individual's income is derived from any public assistance program. (Not all prohibited bases apply to all programs.) Persons with disabilities who require alternative means for communication of program information (Braille, large print, audiotape, etc.) should contact USDA's TARGET Center at (202) 720-2600 (voice and TDD).

To file a complaint of discrimination, write to USDA, Assistant Secretary for Civil Rights, Office of the Assistant Secretary for Civil Rights, 1400 Independence Avenue, S.W., Stop 9410, Washington, DC 20250-9410, or call toll-free at (866) 632-9992 (English) or (800) 877-8339 (TDD) or (866) 377-8642 (English Federal-relay) or (800) 845-6136 (Spanish Federal-relay). USDA is an equal opportunity provider and employer.