



United States
Department of
Agriculture

National
Agricultural
Statistics
Service



ISSN: 1948-2698

Noncitrus Fruits and Nuts 2012 Preliminary Summary

January 2013

USDA



Contents

Noncitrus Fruit Highlights	6
Noncitrus Fruits and Nuts Bearing Acreage, Yield, Production, Price, and Value by Crop - United States: 2010-2012.....	8
Fruits and Nuts Bearing Acreage by Type – United States: 2010-2012	11
Noncitrus Fruits Utilized Production by Type of Utilization – United States: 2010-2012.....	11
Noncitrus Fruits Utilized Production – United States: 2012 Chart.....	12
Noncitrus Fruits Value of Utilized Production – United States: 2012 Chart.....	12
Commercial Apple Bearing Acreage, Yield, Production, Price, and Value – States and United States: 2010-2012	14
Commercial Apple Fresh Market Utilization, Price, and Value – States and United States: 2010-2012	17
Commercial Apple Processed Utilization, Price, and Value – States and United States: 2010-2012.....	19
Commercial Apple Processed Utilization and Price by Use – States and United States: 2010-2012.....	21
Unutilized Apple Production – States and United States: 2010-2012	22
Commercial Apple Bearing Acreage – United States: 2003-2012 Chart.....	23
Commercial Apple Utilized Production – United States: 2003-2012 Chart	23
Other Fruit Bearing Acreage, Yield, Production, Utilization, Price, and Value by Crop – States and United States: 2010-2012.....	24
Other Unutilized Fruit Production by Crop – States and United States: 2010-2012	30
Other Processed Fruit Utilization and Price by Crop and Use – States and United States: 2010-2012.....	30
Olive Production by Variety – California: 2010-2012.....	31
Dry Fruit Production and Price by Use – California: 2010-2012	31
Fresh Basis Equivalents for Selected Dry Fruits – California: 2010-2012.....	31
Strawberry Area Planted, Harvested, Yield, Production, Price, and Value – States and United States: 2010-2012	32
Strawberry Utilization, Price, and Value by Utilization – States and United States: 2010-2012	33
Berry Area Harvested, Yield, Production, Utilization, Price, and Value by Crop – States and United States: 2010-2012.....	34
Unutilized Berry Production – States and United States: 2010-2012	38
Blackberry Area Harvested, Yield, Production, Utilization, Price, and Value by Variety – Oregon: 2010-2012.....	39
Unutilized Cultivated Blackberry Production by Variety – States and United States: 2010-2012.....	39

Sweet Cherry Bearing Acreage, Yield, Production, Utilization, Price, and Value – States and United States: 2010-2012	40
Tart Cherry Bearing Acreage, Yield, Production, Utilization, Price, and Value – States and United States: 2010-2012	42
Sweet and Tart Cherry Processed Utilization and Price by Use – States and United States: 2010-2012	44
Unutilized Cherry Production by Crop – States and United States: 2010-2012	45
Sweet Cherry Bearing Acreage – United States: 2003-2012 Chart	46
Tart Cherry Bearing Acreage – United States: 2003-2012 Chart.....	46
Cranberry Area Harvested, Yield, Production, Utilization, Price and Value – States and United States: 2010-2012	47
Grape Bearing Acreage, Yield, Production, Price, and Value – States and United States: 2010-2012	48
Unutilized Grape Production – States and United States: 2010-2012.....	49
Grape Fresh and Processed Utilization, Price, and Value – States and United States: 2010-2012.....	50
Grape Processed Utilization and Price by Use – States and United States: 2010-2012.....	52
Grape Processed Utilization by Variety – States and United States: 2010-2012	53
Concord Grapes for Processing Marketing Year Average Prices – New York and Pennsylvania: 2010-2012	53
Peach Bearing Acreage, Yield, Production, Price, and Value – States and United States: 2010-2012.....	54
Peach Utilized Production, Price, and Value by Utilization – States and United States: 2010-2012	56
Peach Processed Utilization and Price by Use – States and United States: 2010-2012	58
Unutilized Peach Production – States and United States: 2010-2012.....	58
Peach Bearing Acreage – United States: 2003-2012 Chart.....	59
Peach Bearing Utilized Production – United States: 2003-2012 Chart.....	59
All Pear Bearing Acreage, Yield, Production, Utilization, Price, and Value – States and United States: 2010-2012	60
Unutilized Pear Production – States and United States: 2010-2012	61
Pear Bearing Acreage, Yield, Production, Utilization, Price, and Value by Type – States and United States: 2010-2012	62
Tropical Fruit Acreage Harvested, Yield, Utilized Production, Utilization, Price, and Value by Crop – Hawaii: 2010-2012	64
Apple for Fresh Use Monthly Average Prices Received – States and United States: July 2011-August 2012	66

Apples for Fresh Use Monthly Average Prices Received – United States: July 2008 - December 2012	66
Grapes for Fresh Use Monthly Average Prices Received – United States: May 2008 - December 2012	67
Peaches for Fresh Use Monthly Average Prices Received – United States: May 2008 - September 2012	67
Pears for Fresh Use Monthly Average Prices Received – United States: July 2008 - December 2012.....	67
Tree Nut Bearing Acreage, Yield, Production, Price, and Value by Crop – States: 2010-2012.....	68
Tree Nut Utilization and Meat Production by Crop – States and United States: 2010-2012.....	69
California Almonds Utilized Production – United States: 2003-2012 Chart.....	70
California English Walnuts Utilized Production – United States: 2003-2012 Chart.....	70
Pecan Production, Price, and Value by Variety – States and United States: 2010-2012	71
Crop Comments	72
Definition of Terms.....	74
Price and Value Definitions	75
State MYA Price and Value Computations	75
United States MYA Price and Value Computations	75
Marketing Seasons for Noncitrus Fruits	76
Marketing Seasons for Tree Nuts.....	77
Statistical Methodology	78
Reliability of Selected Noncitrus Fruit Estimates.....	78
Information Contacts	79

Noncitrus Fruit Highlights

In 2012, the Nation's utilized production of the leading noncitrus fruit crops totaled 17.4 million tons, down 4 percent from the 2011 utilized production. Utilized production increased from 2011 for Oregon cultivated blackberries, cultivated blueberries, Maine wild blueberries, sweet cherries, cranberries, California olives, and strawberries. Utilized production decreased from 2011 for apples, apricots, boysenberries, red raspberries, all California raspberries, tart cherries, California dates, grapes, California kiwifruit, nectarines, peaches, pears, California plums, California prunes, and prunes and plums.

The value of utilized production for 2012 noncitrus fruit crops totaled 15.0 billion dollars, up 8 percent from 2011. The value of utilized production for apples increased 9 percent, Oregon cultivated blackberries increased 4 percent, Oregon black raspberries are up 3 percent, all California raspberries increased 7 percent, sweet cherries are up 1 percent, cranberries are up 12 percent, grapes increased by 14 percent, nectarines are up 11 percent, California Olives are up 149 percent, peaches increased 7 percent, California plums are up 24 percent, prunes and plums increased 37 percent, and strawberries are slightly above last year. However, the value of utilized production for apricots is slightly down, cultivated blueberries are down 3 percent, Maine wild blueberries are down 5 percent, boysenberries are down 23 percent, red raspberries decreased 12 percent, tart cherries decreased 27 percent, California dates are down 5 percent, and California prunes decreased 13 percent from the previous year.

This page intentionally left blank.

Noncitrus Fruits and Nuts Bearing Acreage, Yield, Production, Price, and Value by Crop - United States: 2010-2012

[Blank cells indicate estimation period has not yet begun]

Crop	Bearing acreage			Yield per acre		
	2010 (acres)	2011 (acres)	2012 (acres)	2010 (tons fresh equivalent)	2011 (tons fresh equivalent)	2012 (tons fresh equivalent)
Noncitrus fruits						
Apples	341,950	330,600	327,800	13.60	14.30	13.80
Apricots	12,150	12,150	12,150	5.46	5.49	5.00
Avocados ¹	59,930	59,950		2.91	4.39	
Bananas (Hawaii) ^{1 2}	1,100	1,000		8.10	8.70	
Blackberries, cultivated (Oregon) ²	7,500	7,300	6,800	2.91	3.61	3.94
Blueberries						
Cultivated ¹	69,610	72,500	77,700	2.95	3.02	2.97
Wild (Maine)	(NA)	(NA)	(NA)	(NA)	(NA)	(NA)
Boysenberries ¹	500	500	400	2.10	2.60	2.44
Raspberries						
Black (Oregon)	1,300	1,100	900	0.67	1.02	1.20
Red	10,900	11,000	11,000	3.04	3.56	3.15
All (California)	5,400	5,400	5,400	7.50	10.00	9.00
Cherries, Sweet	85,030	85,820	86,790	3.68	3.90	4.89
Cherries, Tart	35,650	36,000	36,500	2.67	3.22	1.17
Cranberries	38,500	38,500	40,300	8.84	10.00	9.98
Dates (California)	7,700	8,400	8,400	3.77	3.96	3.70
Figs (California)	8,600	8,600	8,600	4.76	4.50	4.50
Grapes	951,900	960,100	962,100	7.85	7.76	7.63
Guavas (Hawaii) ^{1 2}	115	110		5.65	8.64	
Kiwifruit (California)	4,200	4,200	4,200	7.79	8.98	7.05
Nectarines	29,300	27,900	26,400	7.96	8.07	7.16
Olives (California)	36,000	41,500	44,000	5.72	1.72	3.64
Papayas (Hawaii) ^{1 2}	1,350	1,300		11.20	11.00	
Peaches	117,630	112,480	112,880	9.78	9.53	8.67
Pears	56,000	54,400	54,400	14.50	17.80	15.80
Plums (California)	26,200	25,500	25,000	5.39	6.27	4.60
Prunes (California)	61,000	58,000	55,000	2.13	2.36	2.27
Prunes and Plums ³	3,060	2,810	2,780	3.95	4.73	4.76
Strawberries ²	56,990	57,420	56,140	25.10	25.30	26.90
Total	2,029,565	2,024,540	1,965,640	(X)	(X)	(X)
				(tons in-shell equivalent)	(tons in-shell equivalent)	(tons in-shell equivalent)
Tree nuts						
Almonds (California) ⁴	740,000	760,000	780,000	1.91	2.24	2.21
Hazelnuts (Oregon)	29,000	28,500	29,000	0.97	1.35	1.20
Macadamias (Hawaii)	15,000	15,000	15,000	1.34	1.64	1.47
Pecans	(NA)	(NA)	(NA)	(NA)	(NA)	(NA)
Pistachios (California)	137,000	153,000	178,000	1.91	1.45	1.55
Walnuts (California)	237,000	245,000	245,000	2.13	1.88	1.92
Total	1,158,000	1,201,500	1,247,000	(X)	(X)	(X)

See footnote(s) at end of table.

--continued

Noncitrus Fruits and Nuts Bearing Acreage, Yield, Production, Price, and Value by Crop - United States: 2010-2012 (continued)

[Blank cells indicate estimation period has not yet begun]

Crop	Total production			Utilized production		
	2010	2011	2012	2010	2011	2012
	(1,000 tons fresh equivalent)	(1,000 tons fresh equivalent)	(1,000 tons fresh equivalent)	(1,000 tons fresh equivalent)	(1,000 tons fresh equivalent)	(1,000 tons fresh equivalent)
Noncitrus fruits						
Apples	4,645.8	4,712.5	4,530.6	4,606.5	4,659.0	4,498.3
Apricots	66.4	66.7	60.8	66.4	66.6	60.8
Avocados ¹	174.3	263.0		174.3	263.0	
Bananas (Hawaii) ¹	(NA)	(NA)		8.9	8.7	
Blackberries, cultivated (Oregon) ¹	22.6	26.4	26.8	21.8	26.3	26.8
Blueberries						
Cultivated	208.3	221.6	236.7	205.4	218.5	230.9
Wild (Maine)	41.5	40.0	45.6	41.5	40.0	45.6
Boysenberries	1.1	1.3	1.0	1.1	1.3	1.0
Raspberries						
Black (Oregon)	0.9	1.1	1.1	0.9	1.1	1.1
Red	33.1	39.2	34.7	33.1	39.2	34.7
All (California)	40.5	54.0	48.6	40.5	54.0	48.6
Cherries, sweet	313.2	334.4	424.0	307.6	330.3	418.4
Cherries, tart	95.2	115.9	42.6	91.6	115.2	42.5
Cranberries ⁵	340.4	385.7	402.3	340.4	385.7	402.3
Dates (California)	29.0	33.3	31.1	29.0	33.3	31.1
Figs (California)	40.9	38.7	38.7	40.9	38.7	38.7
Grapes	7,471.2	7,447.7	7,343.4	7,468.5	7,440.4	7,337.0
Guavas (Hawaii) ¹	(NA)	(NA)		0.7	1.0	
Kiwifruit (California)	32.7	37.7	29.6	32.5	36.7	27.1
Nectarines	233.2	225.2	188.9	233.2	225.2	188.9
Olives (California)	206.0	71.2	160.0	206.0	71.2	160.0
Papayas (Hawaii) ¹	(NA)	(NA)		15.1	14.3	
Peaches	1,150.3	1,071.8	978.3	1,130.6	1,043.0	965.4
Pears	813.6	965.7	858.2	813.4	965.1	858.1
Plums (California)	141.3	160.0	115.0	141.3	160.0	115.0
Prunes (California)	390.0	444.0	395.0	390.0	444.0	395.0
Prunes and Plums ³	12.1	13.3	13.2	11.2	12.9	12.1
Strawberries	(NA)	(NA)	(NA)	1,426.6	1,452.0	1,507.5
Total	(NA)	(NA)	(NA)	17,879.0	18,146.7	17,446.9
	(1,000 tons in-shell equivalent)	(1,000 tons in-shell equivalent)	(1,000 tons in-shell equivalent)	(1,000 tons in-shell equivalent)	(1,000 tons in-shell equivalent)	(1,000 tons in-shell equivalent)
Tree nuts						
Almonds (California)	(NA)	(NA)	(NA)	1,413.8	1,703.0	1,730.1
Hazelnuts (Oregon)	(NA)	(NA)	(NA)	28.0	38.5	34.7
Macadamias (Hawaii)	(NA)	(NA)	(NA)	20.0	24.5	22.0
Pecans	(NA)	(NA)	(NA)	146.9	134.9	151.4
Pistachios (California)	(NA)	(NA)	(NA)	261.0	222.0	275.5
Walnuts (California)	(NA)	(NA)	(NA)	504.0	461.0	470.0
Total	(NA)	(NA)	(NA)	2,373.7	2,583.9	2,683.7

See footnote(s) at end of table.

--continued

Noncitrus Fruits and Nuts Bearing Acreage, Yield, Production, Price, and Value by Crop - United States: 2010-2012 (continued)

[Blank cells indicate estimation period has not yet begun]

Crop	Price			Value of utilized production		
	2010	2011	2012	2010	2011	2012
	(dollars)	(dollars)	(dollars)	(1,000 dollars)	(1,000 dollars)	(1,000 dollars)
Noncitrus fruits						
Apples pounds	0.251	0.303	0.343	2,313,588	2,823,401	3,088,915
Apricots tons	722.00	616.00	673.00	47,876	41,056	40,879
Avocados ¹ tons	2,750.00	1,540.00		479,068	406,047	
Bananas ¹ (Hawaii) pounds	0.600	0.650		10,680	11,310	
Blackberries, cultivated (Oregon) pounds	0.763	0.812	0.832	33,291	42,783	44,520
Blueberries						
Cultivated pounds	1.440	1.850	1.690	593,407	807,576	781,808
Wild (Maine) pounds	0.610	0.910	0.758	50,600	72,690	69,075
Boysenberries pounds	0.873	1.010	1.050	1,834	2,638	2,044
Raspberries						
Black (Oregon) pounds	1.260	2.470	2.650	2,185	5,510	5,689
Red pounds	0.853	0.648	0.642	56,426	50,736	44,515
All (California) pounds	2.470	2.070	2.470	200,288	223,200	239,820
Cherries, sweet tons	2,330.00	2,530.00	2,020.00	715,684	834,585	843,311
Cherries, tart pounds	0.222	0.300	0.594	40,741	69,072	50,520
Cranberries barrels	43.90	44.80	47.90	299,123	345,561	385,506
Dates (California) tons	1,270.00	1,320.00	1,340.00	36,830	43,956	41,674
Figs (California) tons	542.00	526.00		22,185	20,336	
Grapes tons	487.00	577.00	669.00	3,634,915	4,293,607	4,911,335
Guavas ¹ (Hawaii) pounds	0.169	0.170		220	323	
Kiwifruit (California) tons	768.00	775.00		24,961	28,439	
Nectarines tons	553.00	582.00	767.00	129,075	130,973	144,906
Olives (California) tons	664.00	733.00	813.00	136,796	52,168	130,038
Papayas ¹ (Hawaii) pounds	0.370	0.340		11,123	9,722	
Peaches tons	547.00	564.00	654.00	618,566	588,330	631,223
Pears tons	476.00	380.00	509.00	386,955	366,552	437,113
Plums (California) tons	555.00	402.00	695.00	78,422	64,320	79,940
Prunes (California) ⁶ tons	1,350.00	1,310.00	1,250.00	175,500	179,470	156,250
Prunes and Plums ³ tons	439.00	370.00	540.00	4,915	4,767	6,552
Strawberries cwt	79.30	82.50	79.80	2,262,353	2,394,724	2,405,478
Total ⁷ (X)	(X)	(X)	(X)	12,367,607	13,913,852	15,009,852
Tree nuts						
Almonds, shelled (California) ⁴ pounds	1.790	1.990	2.200	2,903,380	4,007,860	4,347,200
Hazelnuts (Oregon) tons	2,410.00	2,330.00	1,830.00	67,480	89,705	63,420
Macadamias (Hawaii) pounds	0.750	0.780	0.800	30,000	38,220	35,200
Pecans pounds	2.300	2.430	1.570	674,828	655,889	476,781
Pistachios (California) pounds	2.220	1.980	2.020	1,158,840	879,120	1,113,020
Walnuts (California) ² tons	2,040.00	2,900.00		1,028,160	1,336,900	
Total ⁷ (X)	(X)	(X)	(X)	5,862,688	7,007,694	7,398,621

(NA) Not available.

(X) Not applicable.

¹ Estimates for 2012 will be published on July 17, 2013.

² Harvested acreage. Yield based on utilized production.

³ Idaho, Michigan, Oregon, and Washington.

⁴ Yield based on in-shell equivalent. Shelling ratios are: 2010 - 0.580; 2011 - 0.596; 2012 - 0.578.

⁵ Production is rounded to the nearest 1,000 barrels prior to converting to tons fresh equivalent.

⁶ Price is for dried basis.

⁷ 2012 value of production was estimated for crops with missing values. The 2011 price was used to compute 2012 fig, kiwifruit, and walnut values. The 2011 values for avocados, bananas, guavas, and papayas are carried forward.

Fruits and Nuts Bearing Acreage by Type – United States: 2010-2012

Year	Citrus fruits ¹	Major deciduous fruits ²	Miscellaneous noncitrus ³	Nuts ⁴	Total
	(acres)	(acres)	(acres)	(acres)	(acres)
2010	826,500	1,719,870	309,695	1,158,000	4,014,065
2011	811,300	1,705,760	318,780	1,201,500	4,037,340
2012	804,300	1,701,800	263,840	1,247,000	4,016,940

¹ Grapefruit, lemons, oranges, tangelos, and tangerines.

² Commercial apples, apricots, cherries, grapes, nectarines, peaches, pears, plums, and prunes.

³ Avocados, bananas, berries, cranberries, dates, figs, guavas, kiwifruit, olives, papayas, and strawberries.

⁴ Almonds, hazelnuts, macadamia nuts, pistachios, and walnuts.

Noncitrus Fruits Utilized Production by Type of Utilization – United States: 2010-2012

[Blank cells indicate estimation period has not yet begun]

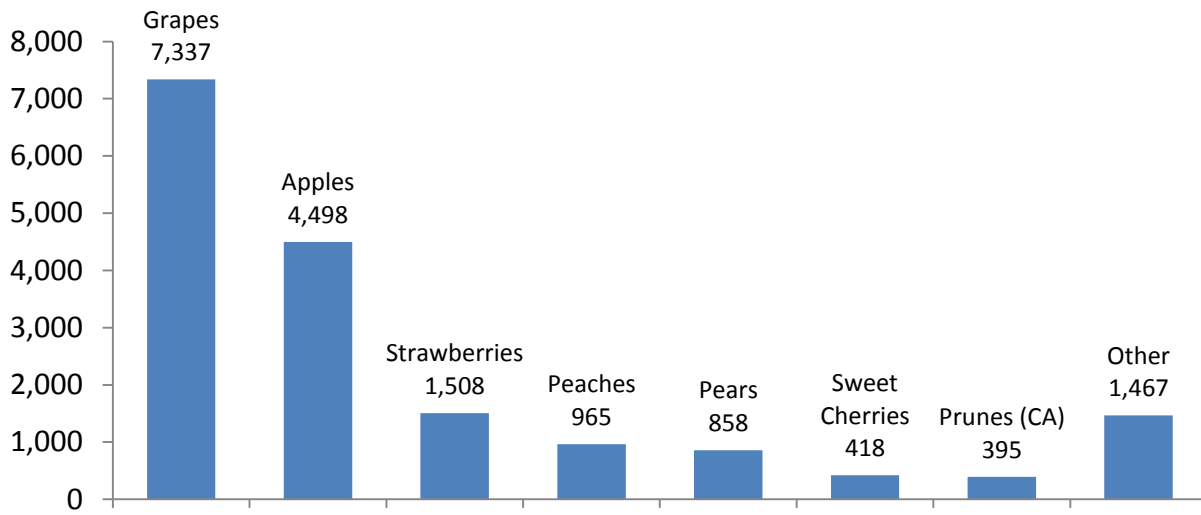
Year	Utilized production ¹	Fresh	Processed ²					
			Canned	Dried	Juice	Frozen	Wine	Other
	(1,000 tons)	(1,000 tons)	(1,000 tons)	(1,000 tons)	(1,000 tons)	(1,000 tons)	(1,000 tons)	(1,000 tons)
2010	17,879.0	7,458.3	1,386.0	2,317.8	1,103.1	705.9	4,269.8	297.7
2011	18,146.7	7,701.9	1,300.5	2,398.6	1,153.2	736.6	4,154.3	315.9
2012	17,446.9							

¹ Cranberry quantity included in total utilized production, excluded from fresh and processed breakdowns.

² Processed strawberries are included in frozen.

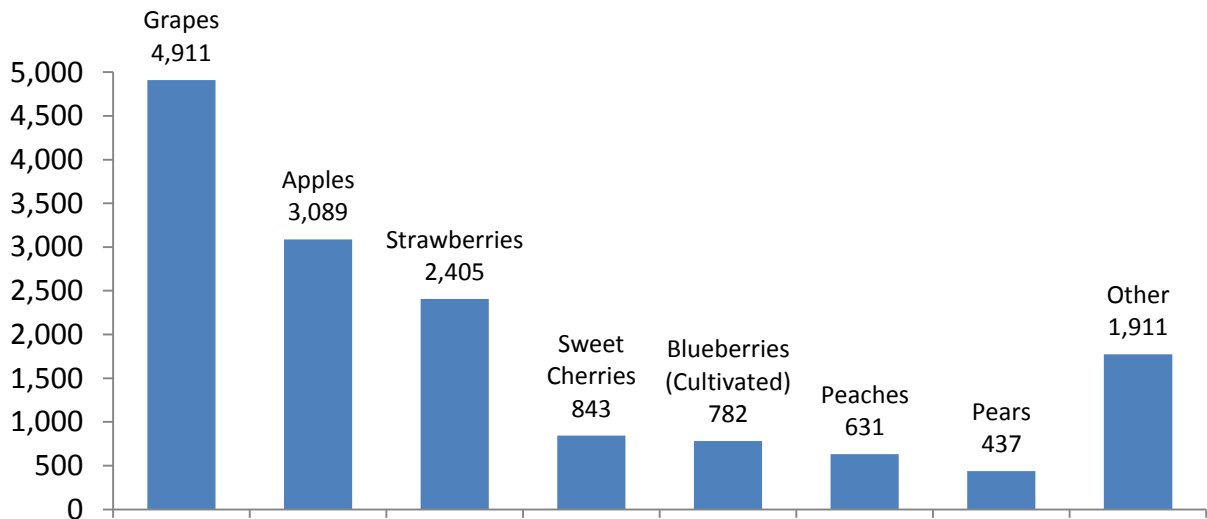
Noncitrus Fruits Utilized Production by Major Fruit United States: 2012

(000) Tons fresh equivalent



Noncitrus Fruits Value of Utilized Production by Major Fruit United States: 2012

Million dollars



This page intentionally left blank.

Commercial Apple Bearing Acreage, Yield, Production, Price, and Value – States and United States: 2010-2012

State	Bearing acreage			Yield per acre ¹		
	2010 (acres)	2011 (acres)	2012 (acres)	2010 (pounds)	2011 (pounds)	2012 (pounds)
Arizona	1,200	1,200	1,000	14,200	9,170	8,000
California	18,000	17,500	17,500	15,600	16,000	17,100
Colorado	1,400	1,300	1,200	10,000	6,920	14,200
Connecticut	2,100	2,100	2,100	11,000	10,500	7,860
Idaho	2,600	2,600	2,600	23,100	23,100	28,800
Illinois	2,200	2,200	2,100	23,600	18,200	15,200
Indiana	1,800	1,700	1,500	14,400	11,800	3,000
Iowa	1,000	1,000	1,000	3,800	4,000	700
Maine	3,100	3,100	3,100	10,000	9,350	9,680
Maryland	1,850	1,750	1,800	23,000	22,900	19,400
Massachusetts	4,000	4,000	4,000	9,250	9,630	7,000
Michigan	35,000	34,000	34,200	16,300	28,800	3,360
Minnesota	2,600	2,450	2,400	7,310	9,590	4,670
Missouri	1,800	1,800	1,600	18,300	8,330	21,900
New Hampshire	1,900	1,900	1,900	11,100	9,470	8,160
New Jersey	2,000	1,900	1,900	21,500	18,900	18,400
New York	42,000	42,000	42,000	30,500	29,000	17,100
North Carolina	6,800	6,900	6,700	20,000	20,300	5,000
Ohio	6,300	4,300	4,000	13,200	15,500	8,250
Oregon	4,200	4,100	4,000	28,600	22,600	32,500
Pennsylvania	21,000	21,000	21,000	23,400	21,800	23,500
Rhode Island	300	300	300	8,670	8,330	5,670
Tennessee	800	800	700	9,380	10,600	9,140
Utah	1,400	1,400	1,400	8,570	13,600	10,000
Vermont	2,800	2,800	2,800	12,500	12,000	9,110
Virginia	11,800	11,800	11,800	16,900	18,600	19,500
Washington	153,000	146,000	146,000	36,300	37,100	44,500
West Virginia	4,900	4,900	4,000	13,100	13,700	22,800
Wisconsin	4,100	3,800	3,200	9,020	13,500	7,380
United States	341,950	330,600	327,800	27,200	28,500	27,600

See footnote(s) at end of table.

--continued

Commercial Apple Bearing Acreage, Yield, Production, Price, and Value – States and United States: 2010-2012 (continued)

State	Total production			Utilized production		
	2010	2011	2012	2010	2011	2012
	(million pounds)	(million pounds)	(million pounds)	(million pounds)	(million pounds)	(million pounds)
Arizona	17.0	11.0	8.0	17.0	11.0	8.0
California	280.0	280.0	300.0	280.0	270.0	300.0
Colorado	14.0	9.0	17.0	14.0	8.0	16.0
Connecticut	23.0	22.0	16.5	22.0	19.5	15.5
Idaho	60.0	60.0	75.0	60.0	60.0	75.0
Illinois	52.0	40.0	32.0	43.0	33.0	25.0
Indiana	26.0	20.0	4.5	24.0	18.0	4.5
Iowa	3.8	4.0	0.7	3.1	3.3	0.2
Maine	31.0	29.0	30.0	29.0	22.5	27.5
Maryland	42.5	40.0	35.0	42.0	39.0	34.7
Massachusetts	37.0	38.5	28.0	34.0	36.0	27.5
Michigan	570.0	980.0	115.0	570.0	975.0	115.0
Minnesota	19.0	23.5	11.2	15.8	19.4	9.4
Missouri	33.0	15.0	35.0	32.0	14.0	33.0
New Hampshire	21.0	18.0	15.5	19.5	17.0	13.5
New Jersey	43.0	36.0	35.0	42.0	35.0	34.0
New York	1,280.0	1,220.0	720.0	1,270.0	1,210.0	710.0
North Carolina	136.0	140.0	33.5	134.0	140.0	32.0
Ohio	83.2	66.6	33.0	71.7	59.4	26.0
Oregon	120.0	92.5	130.0	120.0	90.0	128.0
Pennsylvania	492.0	458.0	494.0	473.0	439.0	475.0
Rhode Island	2.6	2.5	1.7	2.5	2.2	1.6
Tennessee	7.5	8.5	6.4	6.8	8.2	6.0
Utah	12.0	19.0	14.0	11.7	18.3	13.8
Vermont	35.0	33.5	25.5	33.0	26.5	24.0
Virginia	200.0	220.0	230.0	200.0	220.0	230.0
Washington	5,550.0	5,420.0	6,500.0	5,550.0	5,420.0	6,500.0
West Virginia	64.0	67.0	91.0	61.0	65.0	90.0
Wisconsin	37.0	51.4	23.6	31.9	38.7	21.4
United States	9,291.6	9,425.0	9,061.1	9,213.0	9,318.0	8,996.6

See footnote(s) at end of table.

--continued

**Commercial Apple Bearing Acreage, Yield, Production, Price, and Value – States and United States:
2010-2012 (continued)**

State	Price per pound			Value of utilized production		
	2010 (dollars)	2011 (dollars)	2012 (dollars)	2010 (1,000 dollars)	2011 (1,000 dollars)	2012 (1,000 dollars)
Arizona	0.179	0.241	0.217	3,048	2,647	1,738
California	0.207	0.215	0.259	57,820	57,975	77,750
Colorado	0.216	0.293	0.304	3,020	2,340	4,860
Connecticut	0.539	0.539	0.654	11,853	10,507	10,130
Idaho	0.232	0.239	0.320	13,910	14,350	24,000
Illinois	0.617	0.575	0.557	26,548	18,989	13,928
Indiana	0.403	0.398	0.396	9,672	7,166	1,784
Iowa	0.719	0.663	0.675	2,228	2,187	135
Maine	0.461	0.474	0.560	13,371	10,676	15,388
Maryland	0.182	0.259	0.402	7,650	10,115	13,939
Massachusetts	0.570	0.603	0.623	19,366	21,690	17,123
Michigan	0.181	0.207	0.352	103,375	201,650	40,475
Minnesota	0.796	0.814	0.811	12,571	15,796	7,625
Missouri	0.301	0.313	0.471	9,635	4,379	15,554
New Hampshire	0.463	0.505	0.581	9,036	8,588	7,845
New Jersey	0.480	0.672	0.839	20,180	23,505	28,540
New York	0.175	0.202	0.352	221,620	244,000	249,790
North Carolina	0.185	0.192	0.313	24,793	26,863	10,016
Ohio	0.383	0.367	0.336	27,426	21,808	8,735
Oregon	0.224	0.221	0.250	26,855	19,861	32,018
Pennsylvania	0.158	0.182	0.281	74,896	79,739	133,595
Rhode Island	0.820	0.793	0.851	2,050	1,745	1,362
Tennessee	0.305	0.279	0.480	2,076	2,290	2,880
Utah	0.250	0.222	0.263	2,928	4,054	3,635
Vermont	0.309	0.304	0.434	10,210	8,044	10,405
Virginia	0.154	0.182	0.297	30,760	40,055	68,220
Washington	0.278	0.357	0.346	1,541,420	1,932,260	2,250,850
West Virginia	0.144	0.175	0.258	8,797	11,371	23,193
Wisconsin	0.516	0.485	0.626	16,474	18,751	13,402
United States	0.251	0.303	0.343	2,313,588	2,823,401	3,088,915

(D) Withheld to avoid disclosing data for individual operations.

¹ Yield is based on total production, which includes unharvested production and fruit harvested but not sold due to market conditions.

Commercial Apple Fresh Market Utilization, Price, and Value – States and United States: 2010-2012

[Equivalent packinghouse door returns for California, Michigan, New York, and Washington; price at point of first sale for all other States. Blank cells indicate estimation period has not yet begun.]

State	Quantity			Price per pound		
	2010	2011	2012	2010	2011	2012
	(million pounds)	(million pounds)	(million pounds)	(dollars)	(dollars)	(dollars)
Arizona	2.0	1.0		0.849	0.780	
California	115.0	125.0		0.373	0.325	
Colorado	8.0	4.0		0.310	0.450	
Connecticut	18.5	17.5		0.620	0.590	
Idaho	40.0	35.0		0.315	0.335	
Illinois	(D)	(D)		(D)	(D)	
Indiana	19.0	13.0		0.484	0.507	
Iowa	(D)	(D)		(D)	(D)	
Maine	24.0	17.0		0.540	0.595	
Maryland	14.0	18.0		0.390	0.460	
Massachusetts	27.0	31.0		0.700	0.685	
Michigan	210.0	350.0		0.300	0.350	
Minnesota	(D)	(D)		(D)	(D)	
Missouri	22.0	9.0		0.405	0.406	
New Hampshire	14.5	13.0		0.600	0.630	
New Jersey	30.0	25.0		0.640	0.907	
New York	560.0	530.0		0.263	0.333	
North Carolina	56.0	59.0		0.276	0.308	
Ohio	56.2	43.4		0.460	0.460	
Oregon	85.0	75.0		0.290	0.244	
Pennsylvania	190.0	184.0		0.258	0.290	
Rhode Island	(D)	(D)		(D)	(D)	
Tennessee	(D)	(D)		(D)	(D)	
Utah	11.3	17.5		0.257	0.228	
Vermont	27.0	16.0		0.360	0.445	
Virginia	70.0	60.0		0.267	0.364	
Washington	4,550.0	4,550.0		0.321	0.402	
West Virginia	14.0	19.0		0.319	0.365	
Wisconsin	28.2	32.5		0.574	0.563	
Other States ¹	65.1	57.2		0.688	0.699	
United States	6,256.8	6,302.1		0.326	0.394	

See footnote(s) at end of table.

--continued

**Commercial Apple Fresh Market Utilization, Price, and Value – States and United States:
2010-2012 (continued)**

[Equivalent packinghouse door returns for California, Michigan, New York, and Washington; price at point of first sale for all other States. Blank cells indicate estimation period has not yet begun.]

State	Value of production		
	2010	2011	2012
	(1,000 dollars)	(1,000 dollars)	(1,000 dollars)
Arizona	1,698	780	
California	42,895	40,625	
Colorado	2,480	1,800	
Connecticut	11,470	10,325	
Idaho	12,600	11,725	
Illinois	(D)	(D)	
Indiana	9,196	6,591	
Iowa	(D)	(D)	
Maine	12,960	10,115	
Maryland	5,460	8,280	
Massachusetts	18,900	21,235	
Michigan	63,000	122,500	
Minnesota	(D)	(D)	
Missouri	8,910	3,654	
New Hampshire	8,700	8,190	
New Jersey	19,200	22,675	
New York	147,280	176,490	
North Carolina	15,456	18,172	
Ohio	25,852	19,964	
Oregon	24,650	18,300	
Pennsylvania	49,020	53,360	
Rhode Island	(D)	(D)	
Tennessee	(D)	(D)	
Utah	2,904	3,990	
Vermont	9,720	7,120	
Virginia	18,690	21,840	
Washington	1,460,550	1,829,100	
West Virginia	4,466	6,935	
Wisconsin	16,187	18,298	
Other States ¹	44,803	39,967	
United States	2,037,047	2,482,031	

(D) Withheld to avoid disclosing data for individual operations.

¹ Includes data withheld above and/or data for States not listed in this table.

Commercial Apple Processed Utilization, Price, and Value – States and United States: 2010-2012

[Blank cells indicate estimation period has not yet begun]

State	Quantity			Price per ton		
	2010	2011	2012	2010	2011	2012
	(million pounds)	(million pounds)	(million pounds)	(dollars)	(dollars)	(dollars)
Arizona	15.0	10.0		180.00	373.00	
California	165.0	145.0		181.00	239.00	
Colorado	6.0	4.0		180.00	270.00	
Connecticut	3.5	2.0		219.00	182.00	
Idaho	20.0	25.0		131.00	210.00	
Illinois	(D)	(D)		(D)	(D)	
Indiana	5.0	5.0		190.00	230.00	
Iowa	(D)	(D)		(D)	(D)	
Maine	5.0	5.5		164.00	204.00	
Maryland	28.0	21.0		156.00	175.00	
Massachusetts	7.0	5.0		133.00	182.00	
Michigan	360.0	625.0		224.00	253.00	
Minnesota	(D)	(D)		(D)	(D)	
Missouri	10.0	5.0		145.00	290.00	
New Hampshire	5.0	4.0		134.00	199.00	
New Jersey	12.0	10.0		163.00	166.00	
New York	710.0	680.0		209.00	199.00	
North Carolina	78.0	81.0		239.00	215.00	
Ohio	15.5	16.0		203.00	231.00	
Oregon	35.0	15.0		126.00	208.00	
Pennsylvania	283.0	255.0		183.00	207.00	
Rhode Island	(D)	(D)		(D)	(D)	
Tennessee	(D)	(D)		(D)	(D)	
Utah	0.4	0.8		120.00	160.00	
Vermont	6.0	10.5		163.00	176.00	
Virginia	130.0	160.0		186.00	228.00	
Washington	1,000.0	870.0		162.00	237.00	
West Virginia	47.0	46.0		184.00	193.00	
Wisconsin	3.7	6.2		155.00	146.00	
Other States ¹	6.1	8.9		220.00	234.00	
United States	2,956.2	3,015.9		187.00	226.00	

See footnote(s) at end of table.

--continued

**Commercial Apple Processed Utilization, Price, and Value – States and United States:
2010-2012 (continued)**

[Blank cells indicate estimation period has not yet begun]

State	Value of production		
	2010	2011	2012
	(1,000 dollars)	(1,000 dollars)	(1,000 dollars)
Arizona	1,350	1,867	
California	14,925	17,350	
Colorado	540	540	
Connecticut	383	182	
Idaho	1,310	2,625	
Illinois	(D)	(D)	
Indiana	476	575	
Iowa	(D)	(D)	
Maine	411	561	
Maryland	2,190	1,835	
Massachusetts	466	455	
Michigan	40,375	79,150	
Minnesota	(D)	(D)	
Missouri	725	725	
New Hampshire	336	398	
New Jersey	980	830	
New York	74,340	67,510	
North Carolina	9,337	8,691	
Ohio	1,574	1,844	
Oregon	2,205	1,561	
Pennsylvania	25,876	26,379	
Rhode Island	(D)	(D)	
Tennessee	(D)	(D)	
Utah	24	64	
Vermont	490	924	
Virginia	12,070	18,215	
Washington	80,870	103,160	
West Virginia	4,331	4,436	
Wisconsin	287	453	
Other States ¹	670	1,040	
United States	276,541	341,370	

(D) Withheld to avoid disclosing data for individual operations.

¹ Includes data withheld above and/or data for States not listed in this table.

Commercial Apple Processed Utilization and Price by Use – States and United States: 2010-2012

[Blank cells indicate estimation period has not yet begun]

Use and State	Quantity			Price per ton		
	2010	2011	2012	2010	2011	2012
	(million pounds)	(million pounds)	(million pounds)	(dollars)	(dollars)	(dollars)
Canned						
California	(D)	(D)		(D)	(D)	
Maryland	12.0	11.0		198.00	198.00	
Michigan	160.0	245.0		240.00	260.00	
New York	345.0	330.0		214.00	212.00	
North Carolina	50.7	54.3		250.00	220.00	
Pennsylvania	182.0	177.0		200.00	225.00	
Virginia	100.0	130.0		200.00	221.00	
Washington	180.0	130.0		169.00	241.00	
West Virginia	32.0	29.0		201.00	213.00	
Other States ¹	26.6	17.4		179.00	233.00	
United States	1,088.3	1,123.7		207.00	230.00	
Juice and cider						
California	(D)	(D)		(D)	(D)	
Maryland	15.0	9.0		129.00	157.00	
Michigan	80.0	135.0		180.00	190.00	
New York	260.0	270.0		168.00	170.00	
North Carolina	21.0	23.5		160.00	200.00	
Ohio	(D)	(D)		(D)	(D)	
Oregon	18.0	6.0		105.00	170.00	
Pennsylvania	92.0	68.0		151.00	160.00	
Virginia	30.0	(D)		138.00	(D)	
Washington	500.0	470.0		126.00	210.00	
West Virginia	13.0	16.0		143.00	161.00	
Other States ¹	236.9	210.9		171.00	229.00	
United States	1,265.9	1,208.4		149.00	198.00	
Frozen						
United States	206.0	190.5		198.00	246.00	
Dried						
United States	175.5	183.5		143.00	214.00	
Fresh slices						
United States	146.4	238.4		377.00	357.00	
Other ²						
Maryland	1.0	1.0		68.00	78.00	
Michigan	5.0	(D)		280.00	(D)	
New York	(D)	(D)		(D)	(D)	
Other States ¹	66.5	70.0		246.00	203.00	
United States	74.1	71.0		241.00	201.00	

(D) Withheld to avoid disclosing data for individual operations.

¹ Includes data withheld above and/or data for States not listed in this table.

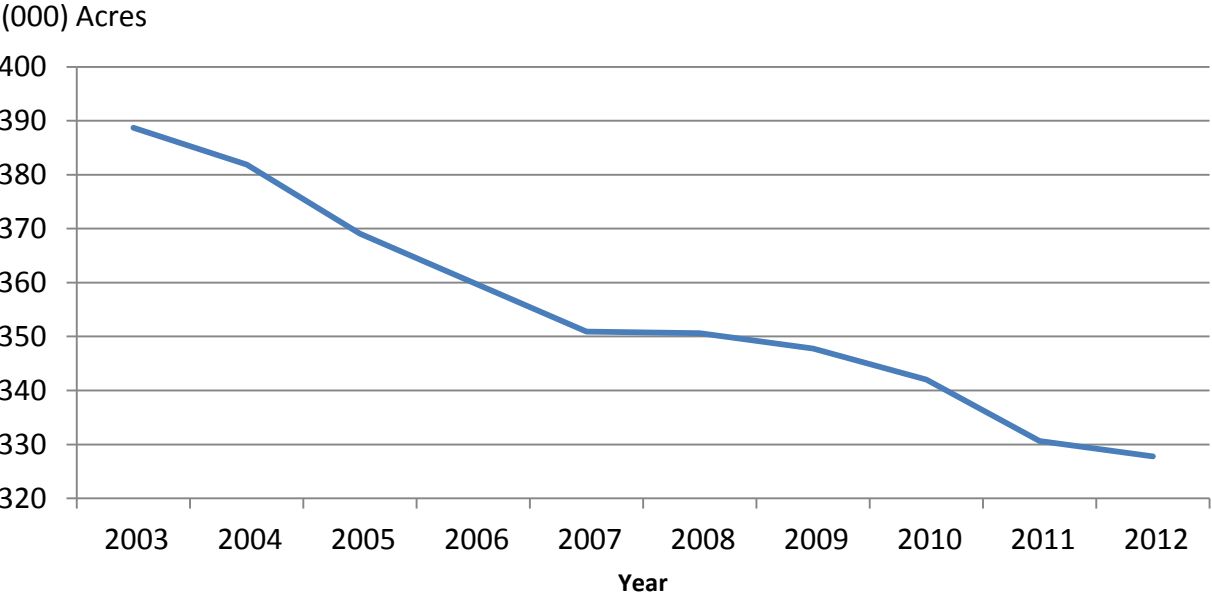
² Includes vinegar, wine, and slices for pie making.

Unutilized Apple Production – States and United States: 2010-2012

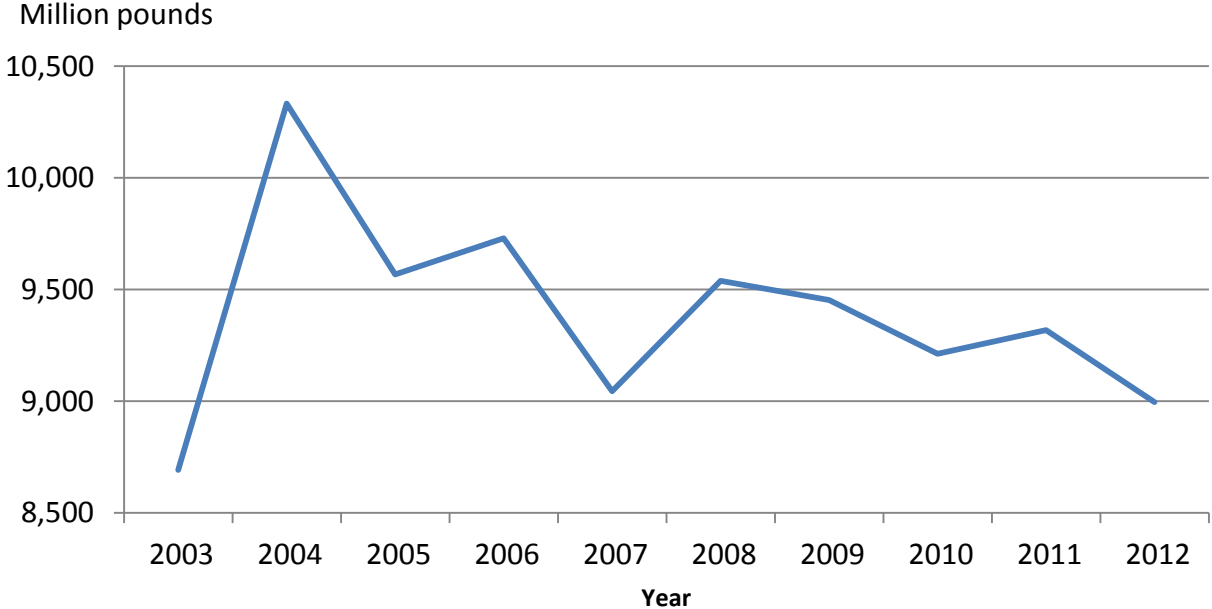
State	Unharvested production			Harvested not sold		
	2010	2011	2012	2010	2011	2012
	(million pounds)	(million pounds)	(million pounds)	(million pounds)	(million pounds)	(million pounds)
California	-	10.0	-	-	-	-
Colorado	-	1.0	1.0	-	-	-
Connecticut	1.0	2.0	1.0	-	0.5	-
Illinois	6.0	5.0	5.0	3.0	2.0	2.0
Indiana	1.0	1.0	-	1.0	1.0	-
Iowa	0.6	0.5	0.5	0.1	0.2	-
Maine	2.0	1.5	1.5	-	5.0	1.0
Maryland	0.3	0.3	-	0.2	0.7	0.3
Massachusetts	3.0	2.0	0.5	-	0.5	-
Michigan	-	5.0	-	-	-	-
Minnesota	2.7	3.1	1.3	0.5	1.0	0.5
Missouri	0.8	0.7	1.4	0.2	0.3	0.6
New Hampshire	1.5	1.0	2.0	-	-	-
New Jersey	1.0	1.0	1.0	-	-	-
New York	10.0	10.0	10.0	-	-	-
North Carolina	2.0	-	1.5	-	-	-
Ohio	9.2	3.1	0.4	2.3	4.1	6.6
Oregon	-	2.0	1.5	-	0.5	0.5
Pennsylvania	11.0	9.0	8.0	8.0	10.0	11.0
Rhode Island	0.1	0.3	0.1	-	-	-
Tennessee	0.5	0.3	0.2	0.2	-	0.2
Utah	0.3	0.4	0.1	-	0.3	0.1
Vermont	2.0	6.5	1.5	-	0.5	-
West Virginia	2.0	1.0	1.0	1.0	1.0	-
Wisconsin	3.0	10.4	1.7	2.1	2.3	0.5
United States	60.0	77.1	41.2	18.6	29.9	23.3

- Represents zero.

Commercial Apple Bearing Acreage United States: 2003-2012



Commercial Apple Utilized Production United States: 2003-2012



Other Fruit Bearing Acreage, Yield, Production, Utilization, Price, and Value by Crop – States and United States: 2010-2012

[Blank cells indicate estimation period has not yet begun]

Crop, State, and season	Bearing acreage	Yield per acre ¹	Production		Utilization	
			Total	Utilized	Fresh	Processed
	(acres)	(tons)	(tons)	(tons)	(tons)	(tons)
Apricots						
California						
2010	10,800	5.57	60,200	60,200	18,500	41,700
2011	10,800	5.79	62,550	62,550	20,500	42,050
2012	10,800	4.98	53,800	53,800	17,000	36,800
Utah						
2010	(D)	(D)	280	250	(D)	(D)
2011	(D)	(D)	200	170	(D)	(D)
2012	(D)	(D)	300	270	(D)	(D)
Washington						
2010	(D)	(D)	5,900	5,900	(D)	(D)
2011	(D)	(D)	3,900	3,900	(D)	(D)
2012	(D)	(D)	6,700	6,700	(D)	(D)
United States						
2010	12,150	5.46	66,380	66,350	23,510	42,840
2011	12,150	5.49	66,650	66,620	23,990	42,630
2012	12,150	5.00	60,800	60,770	23,130	37,640
Avocados²						
California						
2010-2011	52,200	2.90	151,500	151,500	151,500	(NA)
2011-2012	52,200	4.43	231,500	231,500	231,500	(NA)
2012-2013						
Florida						
2010-2011	7,400	3.04	22,500	22,500	22,500	(NA)
2011-2012	7,400	4.20	31,100	31,100	31,100	(NA)
2012-2013						
Hawaii						
2010-2011	330	1.00	330	330	330	(NA)
2011-2012	350	1.00	350	350	350	(NA)
2012-2013						
United States						
2010-2011	59,930	2.91	174,330	174,330	174,330	(NA)
2011-2012	59,950	4.39	262,950	262,950	262,950	(NA)
2012-2013						
Dates						
California						
2010	7,700	3.77	29,000	29,000	29,000	(NA)
2011	8,400	3.96	33,300	33,300	33,300	(NA)
2012	8,400	3.70	31,100	31,100	31,100	(NA)

See footnote(s) at end of table.

--continued

Other Fruit Bearing Acreage, Yield, Production, Utilization, Price, and Value by Crop – States and United States: 2010-2012 (continued)

[Blank cells indicate estimation period has not yet begun]

Crop, State, and season	Price per ton			Value of production		
	Fresh (dollars)	Processed (dollars)	All (dollars)	Fresh (1,000 dollars)	Processed (1,000 dollars)	Total (1,000 dollars)
Apricots ³						
California						
2010	1,350.00	381.00	679.00	24,975	15,885	40,860
2011	875.00	375.00	539.00	17,938	15,767	33,705
2012	1,050.00	392.00	600.00	17,850	14,410	32,260
Utah						
2010	(D)	(D)	432.00	(D)	(D)	108
2011	(D)	(D)	1,290.00	(D)	(D)	219
2012	(D)	(D)	919.00	(D)	(D)	248
Washington						
2010	(D)	(D)	1,170.00	(D)	(D)	6,908
2011	(D)	(D)	1,830.00	(D)	(D)	7,132
2012	(D)	(D)	1,250.00	(D)	(D)	8,371
United States						
2010	1,350.00	376.00	722.00	31,789	16,087	47,876
2011	1,050.00	372.00	616.00	25,198	15,858	41,056
2012	1,140.00	387.00	673.00	26,319	14,560	40,879
Avocados ²						
California						
2010-2011	3,040.00	(X)	3,040.00	460,560	(X)	460,560
2011-2012	1,650.00	(X)	1,650.00	381,975	(X)	381,975
2012-2013						
Florida						
2010-2011	800.00	(X)	800.00	18,000	(X)	18,000
2011-2012	756.00	(X)	756.00	23,512	(X)	23,512
2012-2013						
Hawaii						
2010-2011	1,540.00	(X)	1,540.00	508	(X)	508
2011-2012	1,600.00	(X)	1,600.00	560	(X)	560
2012-2013						
United States						
2010-2011	2,750.00	(X)	2,750.00	479,068	(X)	479,068
2011-2012	1,540.00	(X)	1,540.00	406,047	(X)	406,047
2012-2013						
Dates						
California						
2010	1,270.00	(X)	1,270.00	36,830	(X)	36,830
2011	1,320.00	(X)	1,320.00	43,956	(X)	43,956
2012	1,340.00	(X)	1,340.00	41,674	(X)	41,674

See footnote(s) at end of table.

--continued

Other Fruit Bearing Acreage, Yield, Production, Utilization, Price, and Value by Crop – States and United States: 2010-2012 (continued)

Crop, State, and season	Bearing acreage	Yield per acre ¹	Production		Utilization	
			Total	Utilized	Fresh	Processed
	(acres)	(tons)	(tons)	(tons)	(tons)	(tons)
Figs ⁴						
California						
2010	8,600	4.76	40,910	40,910	3,960	36,950
2011	8,600	4.50	38,660	38,660	3,960	34,700
2012	8,600	4.50	38,660	38,660	3,960	34,700
Kiwifruit						
California						
2010	4,200	7.79	32,700	32,500	29,800	2,700
2011	4,200	8.98	37,700	36,700	33,300	3,400
2012	4,200	7.05	29,600	27,100	26,600	500
Nectarines ⁵						
California						
2010	28,000	8.04	225,000	225,000	225,000	(NA)
2011	26,500	8.15	216,000	216,000	216,000	(NA)
2012	25,000	7.20	180,000	180,000	180,000	(NA)
Washington						
2010	1,300	6.31	8,200	8,200	8,200	(NA)
2011	1,400	6.57	9,200	9,200	9,200	(NA)
2012	1,400	6.36	8,900	8,900	8,900	(NA)
United States						
2010	29,300	7.96	233,200	233,200	233,200	(NA)
2011	27,900	8.07	225,200	225,200	225,200	(NA)
2012	26,400	7.16	188,900	188,900	188,900	(NA)
Olives						
California						
2010	36,000	5.72	206,000	206,000	(NA)	206,000
2011	41,500	1.72	71,200	71,200	(NA)	71,200
2012	44,000	3.64	160,000	160,000	(NA)	160,000
Plums						
California						
2010	26,200	5.39	141,300	141,300	(D)	(D)
2011	25,500	6.27	160,000	160,000	(D)	(D)
2012	25,000	4.60	115,000	115,000	(D)	(D)

See footnote(s) at end of table.

--continued

Other Fruit Bearing Acreage, Yield, Production, Utilization, Price, and Value by Crop – States and United States: 2010-2012 (continued)

[Blank cells indicate estimation period has not yet begun]

Crop, State, and season	Price per ton			Value of production		
	Fresh (dollars)	Processed (dollars)	All (dollars)	Fresh (1,000 dollars)	Processed (1,000 dollars)	Total (1,000 dollars)
Figs						
California						
2010	(D)	(D)	542.00	(D)	(D)	22,185
2011	(D)	(D)	526.00	(D)	(D)	20,336
2012						
Kiwifruit						
California						
2010	(D)	(D)	768.00	(D)	(D)	24,961
2011	(D)	(D)	775.00	(D)	(D)	28,439
2012						
Nectarines ⁵						
California						
2010	560.00	(X)	560.00	126,000	(X)	126,000
2011	590.00	(X)	590.00	127,440	(X)	127,440
2012	777.00	(X)	777.00	139,860	(X)	139,860
Washington						
2010	375.00	(X)	375.00	3,075	(X)	3,075
2011	384.00	(X)	384.00	3,533	(X)	3,533
2012	567.00	(X)	567.00	5,046	(X)	5,046
United States						
2010	553.00	(X)	553.00	129,075	(X)	129,075
2011	582.00	(X)	582.00	130,973	(X)	130,973
2012	767.00	(X)	767.00	144,906	(X)	144,906
Olives						
California						
2010	(X)	664.00	664.00	(X)	136,796	136,796
2011	(X)	733.00	733.00	(X)	52,168	52,168
2012	(X)	813.00	813.00	(X)	130,038	130,038
Plums						
California						
2010	(D)	(D)	555.00	(D)	(D)	78,422
2011	(D)	(D)	402.00	(D)	(D)	64,320
2012	(D)	(D)	695.00	(D)	(D)	79,940

See footnote(s) at end of table.

--continued

Other Fruit Bearing Acreage, Yield, Production, Utilization, Price, and Value by Crop – States and United States: 2010-2012 (continued)

Crop, State, and season	Bearing acreage	Yield per acre ¹	Production		Utilization	
			Total	Utilized	Fresh	Processed
	(acres)	(tons)	(tons)	(tons)	(tons)	(tons)
Prunes and plums						
Idaho						
2010	510	5.29	2,700	2,600	(D)	(D)
2011	510	5.49	2,800	2,500	(D)	(D)
2012	480	5.63	2,700	2,300	(D)	(D)
Michigan						
2010	550	3.64	2,000	1,500	1,000	500
2011	500	3.20	1,600	1,600	(D)	(D)
2012	500	0.13	65	65	(D)	(D)
Oregon						
2010	1,400	3.07	4,300	4,000	2,800	1,200
2011	1,300	3.77	4,900	4,800	1,700	3,100
2012	1,300	5.52	7,170	6,470	3,220	3,250
Washington						
2010	600	5.17	3,100	3,100	(D)	(D)
2011	500	8.00	4,000	4,000	(D)	(D)
2012	500	6.60	3,300	3,300	(D)	(D)
4-State total						
2010	3,060	3.95	12,100	11,200	7,700	3,500
2011	2,810	4.73	13,300	12,900	7,030	5,870
2012	2,780	4.76	13,235	12,135	7,330	4,805
Prunes (dried basis)						
California						
2010	61,000	2.13	130,000	130,000	-	130,000
2011	58,000	2.36	137,000	137,000	-	137,000
2012	55,000	2.27	125,000	125,000	-	125,000

See footnote(s) at end of table.

--continued

Other Fruit Bearing Acreage, Yield, Production, Utilization, Price, and Value by Crop – States and United States: 2010-2012 (continued)

Crop, State, and season	Price per ton			Value of production		
	Fresh (dollars)	Processed (dollars)	All (dollars)	Fresh (1,000 dollars)	Processed (1,000 dollars)	Total (1,000 dollars)
Prunes and plums						
Idaho						
2010	(D)	(D)	378.00	(D)	(D)	983
2011	(D)	(D)	354.00	(D)	(D)	886
2012	(D)	(D)	700.00	(D)	(D)	1,609
Michigan						
2010	870.00	180.00	640.00	870	90	960
2011	(D)	(D)	700.00	(D)	(D)	1,120
2012	(D)	(D)	585.00	(D)	(D)	38
Oregon						
2010	498.00	266.00	428.00	1,394	319	1,713
2011	441.00	310.00	356.00	750	960	1,710
2012	813.00	265.00	538.00	2,618	860	3,478
Washington						
2010	(D)	(D)	406.00	(D)	(D)	1,259
2011	(D)	(D)	263.00	(D)	(D)	1,051
2012	(D)	(D)	432.00	(D)	(D)	1,427
4-State total						
2010	551.00	193.00	439.00	4,240	675	4,915
2011	482.00	235.00	370.00	3,389	1,378	4,767
2012	745.00	228.00	540.00	5,458	1,094	6,552
Prunes (dried basis)						
California						
2010	(X)	1,350.00	1,350.00	(X)	175,500	175,500
2011	(X)	1,310.00	1,310.00	(X)	179,470	179,470
2012	(X)	1,250.00	1,250.00	(X)	156,250	156,250

(D) Withheld to avoid disclosing data for individual operations.

(X) Not applicable.

¹ Yield is based on total production.

² Estimates for 2012-2013 will be published on July 17, 2013.

³ Apricot processed price excludes dried. Processing value includes dried.

⁴ Small quantities of canned figs are included in fresh to avoid disclosure of individual operations.

⁵ Small quantities of processed nectarines are included in fresh to avoid disclosure of individual operations.

Other Unutilized Fruit Production by Crop – States and United States: 2010-2012

Crop and State	Unharvested production			Harvested not sold		
	2010	2011	2012	2010	2011	2012
Apricots						
Utah	10	20	10	20	10	20
Kiwifruit						
California	-	-	-	200	1,000	2,500
Prunes and plums						
Idaho	-	300	400	100	-	-
Michigan	470	-	-	30	-	-
Oregon	150	100	700	150	-	-
United States	620	400	1,100	280	-	-

- Represents zero.

Other Processed Fruit Utilization and Price by Crop and Use – States and United States: 2010-2012

[Blank cells indicate estimation period has not yet begun]

Crop, use, and State	Quantity			Price per ton		
	2010	2011	2012	2010	2011	2012
	(tons)	(tons)	(tons)	(dollars)	(dollars)	(dollars)
Apricots (California)						
Canned	20,100	17,150	16,500	390.00	330.00	419.00
Dried, fresh basis	10,000	12,000	9,500	400.00	410.00	315.00
Figs (California)						
Dried, fresh basis	36,950	34,700	34,700	406.00	411.00	
Olives (California)						
Canned	125,000	26,500	78,500	862.00	1,060.00	1,110.00
Crushed for Oil	36,000	42,000	74,000	532.00	556.00	550.00
Limited	37,000	2,200	6,400	270.00	333.00	346.00
Undersized	8,000	500	1,100	-12.00	-13.00	-10.00
Prunes and plums¹						
Canned	1,395	1,460	755	209.00	203.00	234.00
Frozen	455	560	550	251.00	280.00	265.00
Dried and Other	1,650	3,850	3,500	163.00	240.00	220.00

¹ Idaho, Michigan, Oregon, and Washington.

Olive Production by Variety – California: 2010-2012

Variety	2010	2011	2012
	(tons)	(tons)	(tons)
Manzanillo	148,000	23,000	71,200
Sevillano	27,000	7,500	22,900
All other ¹	31,000	40,700	65,900
Total	206,000	71,200	160,000

¹ Includes production for varieties that were or will be used for canned, oil, and other specialty products.

Dry Fruit Production and Price by Use – California: 2010-2012

[Blank cells indicate estimation period has not yet begun]

Crop	Quantity			Price per ton		
	2010	2011	2012	2010	2011	2012
	(tons)	(tons)	(tons)	(dollars)	(dollars)	(dollars)
Fresh basis						
Apricots	10,000	12,000	9,500	400.00	410.00	315.00
Figs	36,950	34,700	34,700	406.00	411.00	
Grapes						
Raisin	1,719,000	1,761,000	1,508,000	336.00	353.00	413.00
Table	58,000	46,000	56,000	289.00	306.00	358.00
Peaches						
Freestone	12,700	4,600	9,800	44.00	42.00	41.00
Prunes	390,000	444,000	395,000	450.00	404.00	396.00
Dried basis						
Apricots	1,400	1,810	1,210	2,860.00	2,720.00	2,470.00
Figs	12,320	11,560	11,560	1,220.00	1,230.00	
Standard	10,900	10,140	10,140	1,370.00	1,400.00	
Substandard	1,420	1,420	1,420	60.00	60.00	
Grapes						
Raisin ¹	382,000	374,600	320,900	1,510.00	1,660.00	1,940.00
Table	12,800	9,700	11,800	1,310.00	1,450.00	1,700.00
Peaches						
Freestone	2,010	470	1,230	278.00	411.00	327.00
Prunes	130,000	137,000	125,000	1,350.00	1,310.00	1,250.00

¹ Includes substandard raisins diverted to other uses.

Fresh Basis Equivalents for Selected Dry Fruits – California: 2010-2012

[Based on 1 ton dry basis equivalent]

Crop	2010	2011	2012
	(tons)	(tons)	(tons)
Apricots	7.14	6.63	7.85
Figs	3.00	3.00	3.00
Grapes			
Raisin	4.50	4.70	4.70
Table	4.53	4.74	4.75
Peaches			
Freestone	6.32	9.79	7.97
Prunes	3.00	3.24	3.16

Strawberry Area Planted, Harvested, Yield, Production, Price, and Value – States and United States: 2010-2012

State	Area planted			Area harvested		
	2010	2011	2012	2010	2011	2012
	(acres)	(acres)	(acres)	(acres)	(acres)	(acres)
California	38,600	38,000	38,500	38,600	38,000	38,500
Florida	8,800	9,900	8,900	8,800	9,900	8,700
Michigan	950	850	750	750	700	650
New York	1,600	1,600	1,600	1,400	1,400	1,400
North Carolina	1,600	1,600	1,600	1,500	1,500	1,500
Ohio	1,100	1,100	740	730	730	660
Oregon	2,100	2,200	2,200	1,900	2,000	2,000
Pennsylvania	1,100	990	920	1,100	990	820
Washington	1,500	1,500	1,500	1,500	1,500	1,300
Wisconsin	820	820	720	710	700	610
United States	58,170	58,560	57,430	56,990	57,420	56,140

State	Yield per acre			Production		
	2010	2011	2012	2010	2011	2012
	(cwt)	(cwt)	(cwt)	(1,000 cwt)	(1,000 cwt)	(1,000 cwt)
California	670	680	720	25,859	25,846	27,637
Florida	220	250	210	1,936	2,475	1,827
Michigan	39	44	51	29	31	33
New York	25	26	23	35	36	32
North Carolina	120	130	135	180	195	203
Ohio	48	36	42	35	26	28
Oregon	125	115	105	236	226	213
Pennsylvania	51	40	51	56	40	42
Washington	83	83	79	125	125	103
Wisconsin	58	57	51	41	40	31
United States	501	506	537	28,532	29,040	30,149

State	Price per cwt			Value of production		
	2010	2011	2012	2010	2011	2012
	(dollars)	(dollars)	(dollars)	(1,000 dollars)	(1,000 dollars)	(1,000 dollars)
California	70.10	75.20	76.80	1,813,557	1,943,757	2,121,574
Florida	187.00	148.00	110.00	362,032	366,300	200,970
Michigan	141.00	146.00	146.00	4,089	4,522	4,826
New York	197.00	235.00	215.00	6,895	8,460	6,880
North Carolina	135.00	140.00	145.00	24,300	27,300	29,435
Ohio	272.00	210.00	168.00	9,520	5,460	4,704
Oregon	69.00	66.50	71.30	16,291	15,034	15,189
Pennsylvania	207.00	212.00	164.00	11,592	8,480	6,888
Washington	61.10	71.80	100.00	7,640	8,971	10,331
Wisconsin	157.00	161.00	151.00	6,437	6,440	4,681
United States	79.30	82.50	79.80	2,262,353	2,394,724	2,405,478

Strawberry Utilization, Price, and Value by Utilization – States and United States: 2010-2012

Utilization and State	Production					
	2010	2011	2012			
	(1,000 cwt)	(1,000 cwt)	(1,000 cwt)			
Fresh market						
California	20,851	20,462	21,936			
Florida	1,936	2,475	1,827			
Michigan	27	29	32			
New York	35	36	32			
North Carolina	180	195	203			
Ohio	35	26	28			
Oregon	37	28	35			
Pennsylvania	56	40	42			
Washington	10	17	24			
Wisconsin	41	40	31			
United States	23,208	23,348	24,190			
Processing						
California	5,008	5,384	5,701			
Michigan	2	2	1			
Oregon	199	198	178			
Washington	115	108	79			
United States	5,324	5,692	5,959			
Utilization and State	Price per unit			Value of production		
	2010	2011	2012	2010	2011	2012
	(dollars per cwt)	(dollars per cwt)	(dollars per cwt)	(1,000 dollars)	(1,000 dollars)	(1,000 dollars)
Fresh market						
California	80.30	86.10	88.40	1,674,335	1,761,778	1,939,142
Florida	187.00	148.00	110.00	362,032	366,300	200,970
Michigan	147.00	152.00	149.00	3,969	4,408	4,768
New York	197.00	235.00	215.00	6,895	8,460	6,880
North Carolina	135.00	140.00	145.00	24,300	27,300	29,435
Ohio	272.00	210.00	168.00	9,520	5,460	4,704
Oregon	166.00	148.00	139.00	6,142	4,144	4,865
Pennsylvania	207.00	212.00	164.00	11,592	8,480	6,888
Washington	189.00	231.00	177.00	1,890	3,927	4,248
Wisconsin	157.00	161.00	151.00	6,437	6,440	4,681
United States	90.80	94.10	91.20	2,107,112	2,196,697	2,206,581
Processing						
California	27.80	33.80	32.00	139,222	181,979	182,432
Michigan	60.00	57.00	58.00	120	114	58
Oregon	51.00	55.00	58.00	10,149	10,890	10,324
Washington	50.00	46.70	77.00	5,750	5,044	6,083
United States	29.20	34.80	33.40	155,241	198,027	198,897

Berry Area Harvested, Yield, Production, Utilization, Price, and Value by Crop – States and United States: 2010-2012

Crop, State, and year	Area harvested (acres)	Yield per acre ¹ (pounds)	Production		Utilization		
			Total (1,000 pounds)	Utilized (1,000 pounds)	Fresh (1,000 pounds)	Processed (1,000 pounds)	
Cultivated blueberries							
Alabama ²							
2010	340	1,260	550	430	430	-	
2011	400	1,250	700	500	500	-	
2012	450	1,560	850	700	700	-	
Arkansas ²							
2010	300	2,170	740	650	650	-	
2011	250	1,600	500	400	400	-	
2012	250	1,600	500	400	400	-	
California ²							
2010	3,900	7,180	28,000	28,000	28,000	-	
2011	4,300	9,790	42,100	42,100	42,100	-	
2012	4,700	8,700	40,900	40,900	40,900	-	
Florida ²							
2010	3,500	4,690	17,670	16,400	16,400	-	
2011	3,800	5,630	23,400	21,400	21,400	-	
2012	4,500	3,800	18,100	17,100	17,100	-	
Georgia							
2010	13,000	4,460	62,000	58,000	36,000	22,000	
2011	12,000	5,170	65,000	62,000	39,000	23,000	
2012	15,000	4,670	77,000	70,000	37,000	33,000	
Indiana							
2010	670	5,370	3,600	3,600	2,000	1,600	
2011	650	2,460	1,600	1,600	1,300	300	
2012	400	3,750	1,500	1,500	1,000	500	
Michigan							
2010	18,600	5,860	109,000	109,000	49,000	60,000	
2011	19,200	3,750	72,000	72,000	34,000	38,000	
2012	19,700	4,420	87,000	87,000	33,000	54,000	
Mississippi							
2010	2,700	2,960	8,000	8,000	3,000	5,000	
2011	2,700	3,890	10,500	10,500	4,000	6,500	
2012	2,700	3,330	9,000	9,000	3,500	5,500	
New Jersey							
2010	7,500	6,530	49,000	49,000	42,000	7,000	
2011	7,700	8,050	62,000	62,000	47,000	15,000	
2012	7,500	6,870	54,000	51,500	43,000	8,500	
New York ²							
2010	900	2,330	2,300	2,100	2,100	-	
2011	900	2,000	1,900	1,800	1,800	-	
2012	900	1,890	2,000	1,700	1,700	-	
North Carolina							
2010	5,500	7,100	39,050	39,050	27,350	11,700	
2011	5,800	6,240	37,000	36,200	28,600	7,600	
2012	5,700	7,020	40,500	40,000	30,000	10,000	
Oregon							
2010	7,500	7,280	54,600	54,600	27,300	27,300	
2011	7,800	8,400	65,500	65,500	36,700	28,800	
2012	7,900	9,110	72,000	72,000	37,500	34,500	
Washington							
2010	5,200	8,080	42,000	42,000	12,200	29,800	
2011	7,000	8,710	61,000	61,000	30,500	30,500	
2012	8,000	8,750	70,000	70,000	35,000	35,000	
United States							
2010	69,610	5,900	416,510	410,830	246,430	164,400	
2011	72,500	6,030	443,200	437,000	287,300	149,700	
2012	77,700	5,940	473,350	461,800	280,800	181,000	

See footnote(s) at end of table.

--continued

Berry Area Harvested, Yield, Production, Utilization, Price, and Value by Crop – States and United States: 2010-2012 (continued)

Crop, State, and year	Price per pound			Value of production		
	Fresh (dollars)	Processed (dollars)	All (dollars)	Fresh (1,000 dollars)	Processed (1,000 dollars)	Total (1,000 dollars)
Cultivated blueberries						
Alabama ²						
2010	1.760	(X)	1.760	757	(X)	757
2011	1.700	(X)	1.700	850	(X)	850
2012	2.120	(X)	2.120	1,484	(X)	1,484
Arkansas ²						
2010	1.780	(X)	1.780	1,157	(X)	1,157
2011	1.730	(X)	1.730	692	(X)	692
2012	1.650	(X)	1.650	660	(X)	660
California ²						
2010	2.710	(X)	2.710	75,980	(X)	75,980
2011	2.410	(X)	2.410	101,461	(X)	101,461
2012	3.270	(X)	3.270	133,743	(X)	133,743
Florida ²						
2010	2.880	(X)	2.880	47,272	(X)	47,272
2011	3.230	(X)	3.230	69,122	(X)	69,122
2012	3.630	(X)	3.630	62,073	(X)	62,073
Georgia						
2010	1.710	0.720	1.330	61,560	15,840	77,400
2011	1.850	0.920	1.510	72,150	21,160	93,310
2012	2.000	0.610	1.340	74,000	20,130	94,130
Indiana						
2010	1.640	0.620	1.190	3,280	992	4,272
2011	1.950	1.150	1.800	2,535	345	2,880
2012	2.320	1.000	1.880	2,320	500	2,820
Michigan						
2010	1.700	0.850	1.230	83,300	51,000	134,300
2011	2.150	1.200	1.650	73,100	45,600	118,700
2012	2.000	1.050	1.410	66,000	56,700	122,700
Mississippi						
2010	1.600	0.800	1.100	4,800	4,000	8,800
2011	2.000	1.350	1.600	8,000	8,775	16,775
2012	2.400	1.300	1.730	8,400	7,150	15,550
New Jersey						
2010	1.340	0.890	1.280	56,280	6,230	62,510
2011	1.600	1.300	1.530	75,200	19,500	94,700
2012	1.640	1.210	1.570	70,520	10,285	80,805
New York ²						
2010	2.150	(X)	2.150	4,521	(X)	4,521
2011	2.200	(X)	2.200	3,957	(X)	3,957
2012	2.290	(X)	2.290	3,893	(X)	3,893
North Carolina						
2010	1.870	0.600	1.490	51,145	7,020	58,165
2011	2.000	1.200	1.830	57,200	9,120	66,320
2012	2.100	0.800	1.780	63,000	8,000	71,000
Oregon						
2010	1.460	0.870	1.170	39,858	23,751	63,609
2011	1.990	1.520	1.780	73,033	43,776	116,809
2012	2.040	0.900	1.490	76,500	31,050	107,550
Washington						
2010	2.380	0.860	1.300	29,036	25,628	54,664
2011	2.560	1.440	2.000	78,080	43,920	122,000
2012	1.490	0.950	1.220	52,150	33,250	85,400
United States						
2010	1.860	0.818	1.440	458,946	134,461	593,407
2011	2.140	1.280	1.850	615,380	192,196	807,576
2012	2.190	0.923	1.690	614,743	167,065	781,808

See footnote(s) at end of table.

--continued

Berry Area Harvested, Yield, Production, Utilization, Price, and Value by Crop – States and United States: 2010-2012 (continued)

Crop, State, and year	Area harvested	Yield per acre ¹	Production		Utilization	
			Total	Utilized	Fresh	Processed
	(acres)	(pounds)	(1,000 pounds)	(1,000 pounds)	(1,000 pounds)	(1,000 pounds)
Wild blueberries						
Maine						
2010	(X)	(X)	83,000	83,000	500	82,500
2011	(X)	(X)	79,900	79,900	600	79,300
2012	(X)	(X)	91,100	91,100	500	90,600
Boysenberries						
Oregon						
2010	500	4,200	2,100	2,100	200	1,900
2011	500	5,200	2,625	2,600	100	2,500
2012	400	4,880	1,950	1,950	50	1,900
Black raspberries						
Oregon						
2010	1,300	1,340	1,750	1,740	140	1,600
2011	1,100	2,030	2,230	2,230	30	2,200
2012	900	2,390	2,150	2,150	50	2,100
Red raspberries						
Oregon						
2010	1,300	3,940	5,120	5,120	1,020	4,100
2011	1,200	5,000	6,000	6,000	1,000	5,000
2012	1,200	5,500	6,600	6,600	800	5,800
Washington						
2010	9,600	6,360	61,010	61,010	610	60,400
2011	9,800	7,380	72,300	72,300	400	71,900
2012	9,800	6,400	62,700	62,700	450	62,250
United States						
2010	10,900	6,070	66,130	66,130	1,630	64,500
2011	11,000	7,120	78,300	78,300	1,400	76,900
2012	11,000	6,300	69,300	69,300	1,250	68,050
All raspberries						
California						
2010	5,400	15,000	81,000	81,000	(D)	(D)
2011	5,400	20,000	108,000	108,000	(D)	(D)
2012	5,400	18,000	97,200	97,200	(D)	(D)

See footnote(s) at end of table.

--continued

Berry Area Harvested, Yield, Production, Utilization, Price, and Value by Crop – States and United States: 2010-2012 (continued)

Crop, State, and year	Price per pound			Value of production		
	Fresh (dollars)	Processed (dollars)	All (dollars)	Fresh (1,000 dollars)	Processed (1,000 dollars)	Total (1,000 dollars)
Wild blueberries						
Maine						
2010	2.200	0.600	0.610	1,100	49,500	50,600
2011	2.200	0.900	0.910	1,320	71,370	72,690
2012	2.250	0.750	0.758	1,125	67,950	69,075
Boysenberries						
Oregon						
2010	1.000	0.860	0.873	200	1,634	1,834
2011	1.880	0.980	1.010	188	2,450	2,638
2012	1.730	1.030	1.050	87	1,957	2,044
Black raspberries						
Oregon						
2010	1.320	1.250	1.260	185	2,000	2,185
2011	2.540	2.470	2.470	76	5,434	5,510
2012	2.480	2.650	2.650	124	5,565	5,689
Red raspberries						
Oregon						
2010	1.830	1.050	1.210	1,867	4,305	6,172
2011	1.800	0.920	1.070	1,800	4,600	6,400
2012	1.780	0.900	1.010	1,424	5,220	6,644
Washington						
2010	1.190	0.820	0.824	726	49,528	50,254
2011	2.990	0.600	0.613	1,196	43,140	44,336
2012	2.540	0.590	0.604	1,143	36,728	37,871
United States						
2010	1.590	0.835	0.853	2,593	53,833	56,426
2011	2.140	0.621	0.648	2,996	47,740	50,736
2012	2.050	0.616	0.642	2,567	41,948	44,515
All raspberries						
California						
2010	(D)	(D)	2.470	(D)	(D)	200,288
2011	(D)	(D)	2.070	(D)	(D)	223,200
2012	(D)	(D)	2.470	(D)	(D)	239,820

(D) Withheld to avoid disclosing data for individual operations.

(X) Not applicable.

¹ Yield is based on utilized production.

² Small quantities of processed blueberries are included in fresh to avoid disclosure of individual operations.

Unutilized Berry Production – States and United States: 2010-2012

Crop and State	Unharvested production			Harvested not sold		
	2010 (1,000 pounds)	2011 (1,000 pounds)	2012 (1,000 pounds)	2010 (1,000 pounds)	2011 (1,000 pounds)	2012 (1,000 pounds)
Black raspberries						
Oregon	10	-	-	-	-	-
Cultivated blueberries						
Alabama	110	180	120	10	20	30
Arkansas	90	10	10	-	90	90
Florida	970	1,200	500	300	800	500
Georgia	4,000	3,000	6,000	-	-	1,000
New Jersey	-	-	2,500	-	-	-
New York	100	100	300	100	-	-
North Carolina	-	800	500	-	-	-
United States	5,270	5,290	9,930	410	910	1,620
Boysenberries						
Oregon	-	25	-	-	-	-

- Represents zero.

Blackberry Area Harvested, Yield, Production, Utilization, Price, and Value by Variety – Oregon: 2010-2012

Variety and year	Area harvested	Yield per acre ¹	Production		Utilization	
			Total	Utilized	Fresh	Processed
	(acres)	(pounds)	(1,000 pounds)	(1,000 pounds)	(1,000 pounds)	(1,000 pounds)
Cultivated blackberries						
Marion						
2010	3,900	4,790	19,700	18,700	600	18,100
2011	4,000	6,730	27,100	26,900	900	26,000
2012	3,500	7,270	25,460	25,460	260	25,200
Evergreen						
2010	500	8,920	4,460	4,460	60	4,400
2011	400	7,200	2,880	2,880	30	2,850
2012	500	8,240	4,120	4,120	20	4,100
Other						
2010	3,100	6,610	21,010	20,500	3,500	17,000
2011	2,900	7,900	22,900	22,900	3,100	19,800
2012	2,800	8,550	23,940	23,940	2,640	21,300
All						
2010	7,500	5,820	45,170	43,660	4,160	39,500
2011	7,300	7,220	52,880	52,680	4,030	48,650
2012	6,800	7,870	53,520	53,520	2,920	50,600
Variety and year	Price per pound			Value of production		
	Fresh	Processed	All	Fresh	Processed	Total
	(dollars)	(dollars)	(dollars)	(1,000 dollars)	(1,000 dollars)	(1,000 dollars)
Cultivated blackberries						
Marion						
2010	1.270	0.690	0.709	762	12,489	13,251
2011	1.210	0.780	0.794	1,089	20,280	21,369
2012	1.130	0.800	0.803	294	20,160	20,454
Evergreen						
2010	1.400	0.640	0.650	84	2,816	2,900
2011	1.500	0.690	0.699	45	1,967	2,012
2012	1.300	0.700	0.703	26	2,870	2,896
Other						
2010	1.740	0.650	0.836	6,090	11,050	17,140
2011	1.660	0.720	0.847	5,146	14,256	19,402
2012	2.210	0.720	0.884	5,834	15,336	21,170
All						
2010	1.670	0.667	0.763	6,936	26,355	33,291
2011	1.560	0.750	0.812	6,280	36,503	42,783
2012	2.110	0.758	0.832	6,154	38,366	44,520

¹ Yield is based on utilized production.

Unutilized Cultivated Blackberry Production by Variety – States and United States: 2010-2012

Variety	Unharvested production			Harvested not sold		
	2010	2011	2012	2010	2011	2012
	(1,000 pounds)	(1,000 pounds)	(1,000 pounds)	(1,000 pounds)	(1,000 pounds)	(1,000 pounds)
Cultivated blackberries	1,510	200	-	-	-	-
Marion	1,000	200	-	-	-	-
Other	510	-	-	-	-	-

- Represents zero.

Sweet Cherry Bearing Acreage, Yield, Production, Utilization, Price, and Value – States and United States: 2010-2012

[Blank cells indicate estimation period has not yet begun]

State and year	Bearing acreage	Yield per acre ¹	Production		Utilization	
			Total	Utilized	Fresh	Processed
	(acres)	(tons)	(tons)	(tons)	(tons)	(tons)
California						
2010	29,000	3.34	97,000	94,000	83,000	11,000
2011	30,000	2.27	68,000	66,000	57,000	9,000
2012	31,000	2.98	92,300	89,300	78,000	11,300
Idaho						
2010	900	2.11	1,900	1,800	(D)	(D)
2011	900	3.11	2,800	2,800	(D)	(D)
2012	900	4.00	3,600	3,300	(D)	(D)
Michigan						
2010	6,700	2.25	15,100	14,400	1,100	13,300
2011	6,500	2.86	18,600	18,600	2,200	16,400
2012	6,500	0.65	4,250	4,250	120	4,130
Montana						
2010	730	3.38	2,470	2,050	(D)	(D)
2011	720	2.80	2,015	1,650	(D)	(D)
2012	690	3.26	2,250	1,395	(D)	(D)
New York						
2010	700	1.43	1,000	800	(D)	(D)
2011	700	1.00	700	670	(D)	(D)
2012	700	0.43	300	290	(D)	(D)
Oregon						
2010	12,500	3.09	38,650	37,500	25,500	12,000
2011	12,500	3.64	45,500	43,800	29,600	14,200
2012	12,500	4.48	56,000	54,600	39,500	15,100
Utah						
2010	500	2.20	1,100	1,080	650	430
2011	500	1.60	800	770	330	440
2012	500	2.60	1,300	1,280	700	580
Washington						
2010	34,000	4.59	156,000	156,000	130,000	26,000
2011	34,000	5.76	196,000	196,000	165,000	31,000
2012	34,000	7.76	264,000	264,000	210,000	54,000
Other States						
2010	(X)	(X)	(X)	(X)	4,090	560
2011	(X)	(X)	(X)	(X)	4,790	330
2012	(X)	(X)	(X)	(X)	4,235	750
United States						
2010	85,030	3.68	313,220	307,630	244,340	63,290
2011	85,820	3.90	334,415	330,290	258,920	71,370
2012	86,790	4.89	424,000	418,415	332,555	85,860

See footnote(s) at end of table.

--continued

Sweet Cherry Bearing Acreage, Yield, Production, Utilization, Price, and Value – States and United States: 2010-2012 (continued)

[Blank cells indicate estimation period has not yet begun]

State and year	Price per ton			Value of production		
	Fresh (dollars)	Processed (dollars)	All (dollars)	Fresh (1,000 dollars)	Processed (1,000 dollars)	All (1,000 dollars)
California						
2010	3,090.00	204.00	2,750.00	256,470	2,245	258,715
2011	3,430.00	193.00	2,990.00	195,510	1,740	197,250
2012	3,270.00	240.00	2,890.00	255,060	2,712	257,772
Idaho						
2010	(D)	(D)	2,230.00	(D)	(D)	4,011
2011	(D)	(D)	2,620.00	(D)	(D)	7,337
2012	(D)	(D)	2,640.00	(D)	(D)	8,706
Michigan						
2010	2,290.00	545.00	678.00	2,519	7,246	9,765
2011	2,410.00	777.00	970.00	5,302	12,740	18,042
2012	4,280.00	1,360.00	1,440.00	514	5,619	6,133
Montana						
2010	(D)	(D)	1,960.00	(D)	(D)	4,026
2011	(D)	(D)	2,470.00	(D)	(D)	4,068
2012	(D)	(D)	1,450.00	(D)	(D)	2,019
New York						
2010	(D)	(D)	2,820.00	(D)	(D)	2,255
2011	(D)	(D)	3,140.00	(D)	(D)	2,106
2012	(D)	(D)	3,700.00	(D)	(D)	1,073
Oregon						
2010	2,392.00	899.00	1,910.00	60,996	10,790	71,786
2011	2,240.00	800.00	1,770.00	66,304	11,360	77,664
2012	1,517.00	972.00	1,370.00	59,922	14,684	74,606
Utah						
2010	1,860.00	521.00	1,330.00	1,209	224	1,433
2011	2,760.00	502.00	1,470.00	911	221	1,132
2012	2,300.00	421.00	1,450.00	1,610	244	1,854
Washington						
2010	2,720.00	388.00	2,330.00	353,600	10,093	363,693
2011	3,120.00	393.00	2,690.00	514,800	12,186	526,986
2012	2,140.00	773.00	1,860.00	449,400	41,748	491,148
Other States						
2010	2,480.00	241.00	(X)	10,157	135	(X)
2011	2,790.00	412.00	(X)	13,375	136	(X)
2012	2,710.00	429.00	(X)	11,476	322	(X)
United States						
2010	2,800.00	486.00	2,330.00	684,951	30,733	715,684
2011	3,080.00	538.00	2,530.00	796,202	38,383	834,585
2012	2,340.00	761.00	2,020.00	777,982	65,329	843,311

(D) Withheld to avoid disclosing data for individual operations.

(X) Not applicable.

¹ Yield is based on total production.

Tart Cherry Bearing Acreage, Yield, Production, Utilization, Price, and Value – States and United States: 2010-2012

State and year	Bearing acreage	Yield per acre ¹	Production		Utilization	
			Total	Utilized	Fresh	Processed
	(acres)	(pounds)	(million pounds)	(million pounds)	(million pounds)	(million pounds)
Michigan						
2010	26,200	5,150	135.0	128.7	0.2	128.5
2011	26,700	5,900	157.5	156.7	0.2	156.5
2012	27,300	425	11.6	11.6	0.1	11.5
New York						
2010	1,500	5,200	7.8	7.8	(D)	(D)
2011	1,500	3,930	5.9	5.9	(D)	(D)
2012	1,500	1,800	2.7	2.7	(D)	(D)
Oregon						
2010	650	1,850	1.2	1.2	(D)	(D)
2011	650	3,850	2.5	2.5	(D)	(D)
2012	650	1,540	1.0	1.0	(D)	(D)
Pennsylvania						
2010	600	3,830	2.3	2.1	(D)	(D)
2011	550	5,820	3.2	3.1	(D)	(D)
2012	550	6,000	3.3	3.2	(D)	(D)
Utah						
2010	3,300	6,970	23.0	22.5	-	22.5
2011	3,300	10,600	35.0	34.5	-	34.5
2012	3,300	12,100	40.0	40.0	-	40.0
Washington						
2010	1,600	9,630	15.4	15.4	(D)	(D)
2011	1,600	13,100	20.9	20.9	(D)	(D)
2012	1,600	15,500	24.8	24.8	(D)	(D)
Wisconsin						
2010	1,800	3,170	5.7	5.5	0.2	5.3
2011	1,700	3,940	6.7	6.7	0.1	6.6
2012	1,600	1,060	1.7	1.7	0.1	1.6
Other States						
2010	(X)	(X)	(X)	(X)	0.4	26.1
2011	(X)	(X)	(X)	(X)	0.2	32.2
2012	(X)	(X)	(X)	(X)	0.2	31.5
United States						
2010	35,650	5,340	190.4	183.2	0.8	182.4
2011	36,000	6,440	231.7	230.3	0.5	229.8
2012	36,500	2,330	85.1	85.0	0.4	84.6

See footnote(s) at end of table.

--continued

Tart Cherry Bearing Acreage, Yield, Production, Utilization, Price, and Value – States and United States: 2010-2012 (continued)

State and year	Price per pound			Value of production		
	Fresh (dollars)	Processed (dollars)	All (dollars)	Fresh (1,000 dollars)	Processed (1,000 dollars)	All (1,000 dollars)
Michigan						
2010	1.100	0.210	0.212	220	27,040	27,260
2011	1.250	0.300	0.301	250	46,960	47,210
2012	2.400	1.100	1.110	240	12,640	12,880
New York						
2010	(D)	(D)	0.174	(D)	(D)	1,360
2011	(D)	(D)	0.242	(D)	(D)	1,426
2012	(D)	(D)	1.050	(D)	(D)	2,844
Oregon						
2010	(D)	(D)	0.317	(D)	(D)	380
2011	(D)	(D)	0.340	(D)	(D)	850
2012	(D)	(D)	0.951	(D)	(D)	951
Pennsylvania						
2010	(D)	(D)	0.257	(D)	(D)	540
2011	(D)	(D)	0.371	(D)	(D)	1,150
2012	(D)	(D)	1.110	(D)	(D)	3,560
Utah						
2010	(X)	0.270	0.270	(X)	6,075	6,075
2011	(X)	0.290	0.290	(X)	10,005	10,005
2012	(X)	0.510	0.510	(X)	20,400	20,400
Washington						
2010	(D)	(D)	0.228	(D)	(D)	3,515
2011	(D)	(D)	0.312	(D)	(D)	6,521
2012	(D)	(D)	0.323	(D)	(D)	8,000
Wisconsin						
2010	0.634	0.280	0.293	127	1,484	1,611
2011	0.646	0.280	0.285	65	1,845	1,910
2012	1.250	1.100	1.110	125	1,760	1,885
Other States						
2010	1.760	0.195	(X)	703	5,092	(X)
2011	1.370	0.300	(X)	273	9,674	(X)
2012	1.970	0.475	(X)	394	14,961	(X)
United States						
2010	1.310	0.218	0.222	1,050	39,691	40,741
2011	1.180	0.298	0.300	588	68,484	69,072
2012	1.900	0.588	0.594	759	49,761	50,520

- Represents zero.

(D) Withheld to avoid disclosing data for individual operations.

(X) Not applicable.

¹ Yield is based on total production.

Sweet and Tart Cherry Processed Utilization and Price by Use – States and United States: 2010-2012

Crop, utilization, and State	Quantity			Price per unit		
	2010	2011	2012	2010	2011	2012
	(tons)	(tons)	(tons)	(dollars per ton)	(dollars per ton)	(dollars per ton)
Sweet cherries						
Canned						
Michigan	450	1,800	(D)	660.00	1,000.00	(D)
Oregon	700	1,450	(D)	995.00	1,100.00	(D)
Washington	2,000	3,000	3,000	1,100.00	968.00	1,100.00
United States	3,150	6,250	5,900	1,014.00	1,010.00	1,150.00
Brined						
Michigan	8,500	9,150	1,350	490.00	600.00	1,050.00
Oregon	10,200	10,500	9,600	910.00	750.00	950.00
Utah	430	440	580	521.00	502.00	420.00
Washington	11,500	14,000	29,000	470.00	480.00	750.00
Other States ¹	7,604	5,535	6,535	245.00	241.00	244.00
United States	38,234	39,625	47,065	548.00	546.00	725.00
Other ²						
Michigan	4,350	5,450	2,780	640.00	1,000.00	1,510.00
Oregon	1,100	2,250	5,500	737.00	840.00	1,010.00
Washington	12,500	14,000	22,000	199.00	183.00	759.00
Other States ¹	3,955	3,795	2,615	132.00	138.00	264.00
United States	21,905	25,495	32,895	302.00	409.00	780.00
	(million pounds)	(million pounds)	(million pounds)	(dollars per pound)	(dollars per pound)	(dollars per pound)
Tart cherries						
Canned						
Michigan	29.0	34.0	3.0	0.210	0.340	1.160
Other States ¹	6.3	4.4	3.5	0.153	0.308	1.080
United States	35.3	38.4	6.5	0.200	0.336	1.120
Frozen						
Michigan	87.0	101.0	8.0	0.215	0.295	1.080
Utah	22.5	34.5	40.0	0.270	0.290	0.510
Other States ¹	16.4	18.6	11.8	0.210	0.260	0.533
United States	125.9	154.1	59.8	0.224	0.290	0.591
Other ³						
Michigan	12.5	21.5	0.5	0.180	0.261	1.040
Other States ¹	8.7	15.8	17.8	0.248	0.337	0.373
United States	21.2	37.3	18.3	0.208	0.293	0.392

(D) Withheld to avoid disclosing data for individual operations.

¹ Includes data withheld above and/or data for States not listed in this table.

² Includes California canned utilization and other processed utilizations (frozen, juice, etc.) from all States.

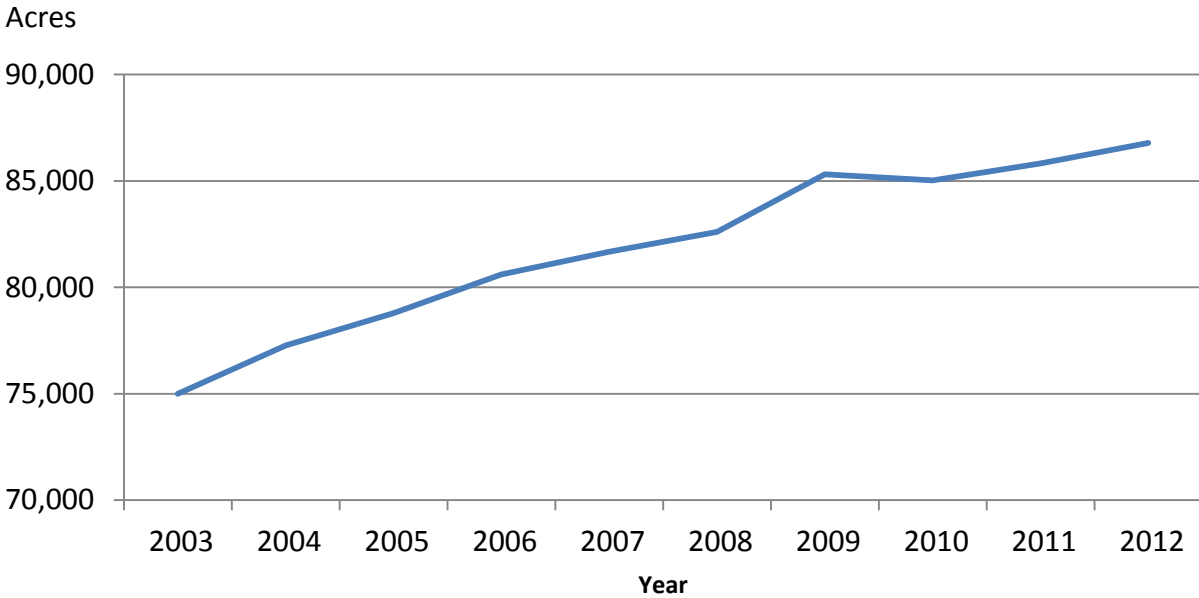
³ Juice, wine, brined, and dried.

Unutilized Cherry Production by Crop – States and United States: 2010-2012

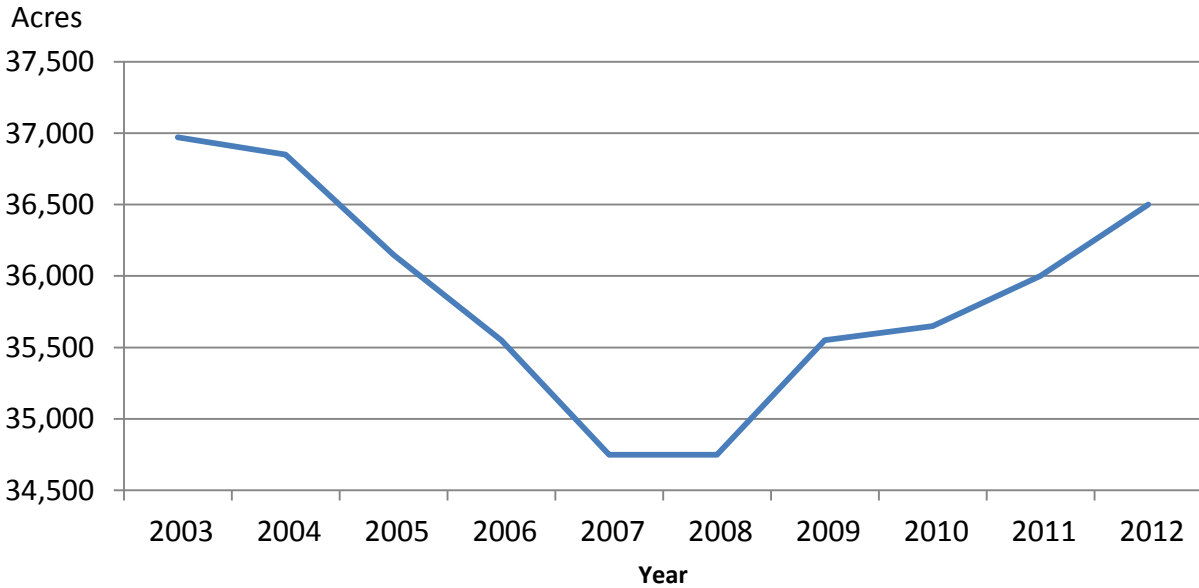
Crop and State	Unharvested production			Harvested not sold		
	2010 (tons)	2011 (tons)	2012 (tons)	2010 (tons)	2011 (tons)	2012 (tons)
Sweet Cherries						
California	-	-	-	3,000	2,000	3,000
Idaho	-	-	300	100	-	-
Michigan	300	-	-	400	-	-
Montana	130	200	650	290	165	205
New York	150	20	10	50	10	-
Oregon	1,000	1,500	800	150	200	600
Utah	20	10	10	-	20	10
Washington	-	-	-	-	-	-
United States	1,600	1,730	1,770	3,990	2,395	3,815
	(million pounds)	(million pounds)	(million pounds)	(million pounds)	(million pounds)	(million pounds)
Tart cherries						
Michigan	3.0	0.4	-	3.3	0.4	-
New York	-	-	-	-	-	-
Pennsylvania	-	-	-	0.2	0.1	0.1
Utah	0.5	-	-	-	0.5	-
Washington	-	-	-	-	-	-
Wisconsin	0.2	-	-	-	-	-
United States	3.7	0.4	-	3.5	1.0	0.1

- Represents zero.

Sweet Cherry Bearing Acreage United States: 2003-2012



Tart Cherry Bearing Acreage United States: 2003-2012



Cranberry Area Harvested, Yield, Production, Utilization, Price and Value – States and United States: 2010-2012

[A barrel weighs 100 pounds]

Year and State	Area harvested	Yield per acre	Production		Utilization	
			Total	Utilized	Fresh	Processed
	(acres)	(barrels)	(barrels)	(barrels)	(barrels)	(barrels)
Massachusetts						
2010	13,000	145.5	1,891,000	1,891,000	112,000	1,779,000
2011	13,000	178.2	2,317,000	2,317,000	110,000	2,207,000
2012	13,000	163.3	2,123,000	2,123,000	83,000	2,040,000
New Jersey ¹						
2010	3,100	181.3	562,000	562,000	-	562,000
2011	3,000	170.0	510,000	510,000	-	510,000
2012	3,000	183.3	550,000	550,000	-	550,000
Oregon ¹						
2010	2,700	106.3	287,000	287,000	-	287,000
2011	2,800	128.9	361,000	361,000	-	361,000
2012	2,900	139.7	405,000	405,000	-	405,000
Washington						
2010	1,700	63.6	108,200	108,200	27,200	81,000
2011	1,700	68.1	115,700	115,700	20,500	95,200
2012	1,700	80.6	137,000	137,000	41,000	96,000
Wisconsin						
2010	18,000	220.0	3,960,000	3,960,000	80,000	3,880,000
2011	18,000	245.0	4,410,000	4,410,000	110,000	4,300,000
2012	19,700	245.2	4,830,000	4,830,000	130,000	4,700,000
United States						
2010	38,500	176.8	6,808,200	6,808,200	219,200	6,589,000
2011	38,500	200.4	7,713,700	7,713,700	240,500	7,473,200
2012	40,300	199.6	8,045,000	8,045,000	254,000	7,791,000
Year and State	Price per barrel ²			Value of utilized production		
	Fresh	Processed	All	Fresh	Processed	All
	(dollars)	(dollars)	(dollars)	(1,000 dollars)	(1,000 dollars)	(1,000 dollars)
Massachusetts						
2010	69.50	40.40	42.10	7,784	71,872	79,656
2011	64.80	43.70	44.70	7,128	96,446	103,574
2012	69.90	46.10	47.00	5,802	94,044	99,846
New Jersey ¹						
2010	(X)	53.70	53.70	(X)	30,179	30,179
2011	(X)	51.00	51.00	(X)	26,010	26,010
2012	(X)	54.40	54.40	(X)	29,920	29,920
Oregon ¹						
2010	(X)	34.50	34.50	(X)	9,902	9,902
2011	(X)	39.50	39.50	(X)	14,260	14,260
2012	(X)	40.40	40.40	(X)	16,362	16,362
Washington						
2010	75.70	54.70	60.00	2,059	4,431	6,490
2011	71.60	51.40	55.00	1,468	4,893	6,361
2012	82.40	55.50	63.50	3,378	5,328	8,706
Wisconsin						
2010	75.70	43.00	43.70	6,056	166,840	172,896
2011	71.60	43.60	44.30	7,876	187,480	195,356
2012	82.40	46.80	47.80	10,712	219,960	230,672
United States						
2010	72.50	43.00	43.90	15,899	283,224	299,123
2011	68.50	44.00	44.80	16,472	329,089	345,561
2012	78.30	46.90	47.90	19,892	365,614	385,506

- Represents zero.

(X) Not applicable.

¹ Small quantities of fresh cranberries are included in processed to avoid disclosure of individual operations.

² Weighted average of co-op and independent sales. Co-op prices represent pool proceeds less returns for processing non-cranberry products, capital stock dividends, capital stock retains, and other retains.

Grape Bearing Acreage, Yield, Production, Price, and Value – States and United States: 2010-2012

State and type	Bearing acreage			Yield per acre ¹		
	2010	2011	2012	2010	2011	2012
	(acres)	(acres)	(acres)	(tons)	(tons)	(tons)
Arkansas	600	600	600	3.50	2.00	2.17
California	792,000	796,000	796,000	8.55	8.39	8.39
Wine	497,000	506,000	506,000	7.30	6.69	7.39
Table	85,000	85,000	85,000	11.90	12.10	11.60
Raisin	210,000	205,000	205,000	10.20	11.00	9.52
Georgia	1,300	1,500	1,800	3.54	2.33	2.61
Michigan	14,400	14,500	14,700	2.50	6.51	2.60
Missouri	1,700	1,700	1,700	3.00	3.06	2.71
New York	37,000	37,000	37,000	4.76	5.08	3.11
North Carolina	1,800	1,800	1,800	2.89	2.89	2.75
Ohio	1,900	1,900	1,900	1.83	3.94	2.81
Oregon	16,900	17,500	18,000	1.85	2.37	2.56
Pennsylvania	13,600	13,600	13,600	6.10	6.69	4.49
Texas	3,000	4,400	3,400	2.97	1.21	2.18
Virginia	2,700	2,600	2,600	2.44	2.65	2.65
Washington	65,000	67,000	69,000	5.17	4.72	5.36
Wine	39,000	41,000	43,000	4.10	3.46	4.30
Juice	26,000	26,000	26,000	6.77	6.69	7.12
United States	951,900	960,100	962,100	7.85	7.76	7.63
State and type	Total production			Utilized production		
	2010	2011	2012	2010	2011	2012
	(tons)	(tons)	(tons)	(tons)	(tons)	(tons)
Arkansas	2,100	1,200	1,300	1,990	1,100	1,100
California	6,773,000	6,682,000	6,678,000	6,773,000	6,682,000	6,678,000
Wine	3,629,000	3,387,000	3,740,000	3,629,000	3,387,000	3,740,000
Table ²	1,011,000	1,032,000	987,000	1,011,000	1,032,000	987,000
Raisin ²	2,133,000	2,263,000	1,951,000	2,133,000	2,263,000	1,951,000
Georgia	4,600	3,500	4,700	4,300	3,300	4,000
Michigan	36,000	94,400	38,200	36,000	93,400	38,200
Missouri	5,100	5,200	4,600	5,100	5,200	4,600
New York	176,000	188,000	115,000	176,000	188,000	112,000
North Carolina	5,200	5,200	4,950	4,950	4,980	4,800
Ohio	3,470	7,480	5,335	3,050	7,330	5,293
Oregon	31,200	41,500	46,000	31,200	41,500	46,000
Pennsylvania	83,000	91,000	61,000	82,000	87,000	59,000
Texas	8,900	5,330	7,420	8,500	4,610	7,300
Virginia	6,600	6,900	6,900	6,450	6,020	6,700
Washington	336,000	316,000	370,000	336,000	316,000	370,000
Wine	160,000	142,000	185,000	160,000	142,000	185,000
Juice	176,000	174,000	185,000	176,000	174,000	185,000
United States	7,471,170	7,447,710	7,343,405	7,468,540	7,440,440	7,336,993

See footnote(s) at end of table.

--continued

Grape Bearing Acreage, Yield, Production, Price, and Value – States and United States: 2010-2012 (continued)

State and type	Price per ton			Value of utilized production		
	2010	2011	2012	2010	2011	2012
	(dollars)	(dollars)	(dollars)	(1,000 dollars)	(1,000 dollars)	(1,000 dollars)
Arkansas	811.00	982.00	1,160.00	1,613	1,080	1,281
California	474.00	578.00	666.00	3,209,040	3,859,202	4,450,626
Wine	576.00	638.00	(D)	2,090,886	2,160,519	(D)
Table ²	382.00	809.00	1,200.00	386,524	834,967	1,180,430
Raisin ²	343.00	382.00	(D)	731,630	863,716	(D)
Georgia	1,270.00	1,280.00	1,410.00	5,440	4,230	5,624
Michigan	430.00	364.00	468.00	15,497	33,957	17,892
Missouri	885.00	831.00	725.00	4,513	4,323	3,334
New York	387.00	373.00	467.00	68,068	70,056	52,252
North Carolina	918.00	1,030.00	931.00	4,545	5,105	4,469
Ohio	711.00	398.00	688.00	2,169	2,916	3,642
Oregon	2,030.00	1,950.00	2,050.00	63,336	80,925	94,300
Pennsylvania	307.00	305.00	348.00	25,152	26,507	20,555
Texas	1,250.00	1,520.00	1,450.00	10,657	6,987	10,564
Virginia	1,700.00	1,540.00	1,630.00	10,965	9,271	10,921
Washington	637.00	598.00	638.00	213,920	189,048	235,875
Wine	1,040.00	987.00	990.00	166,400	140,154	183,150
Juice	270.00	281.00	285.00	47,520	48,894	52,725
United States	487.00	577.00	669.00	3,634,915	4,293,607	4,911,335

(D) Withheld to avoid disclosing data for individual operations.

¹ Yield is based on total production.

² Fresh equivalent of dried and not dried.

Unutilized Grape Production – States and United States: 2010-2012

State	Unharvested production			Harvested not sold		
	2010	2011	2012	2010	2011	2012
	(tons)	(tons)	(tons)	(tons)	(tons)	(tons)
Arkansas	100	90	190	10	10	10
Georgia	300	200	700	-	-	-
Michigan	-	1,000	-	-	-	-
New York	-	-	3,000	-	-	-
North Carolina	250	170	150	-	50	-
Ohio	420	150	42	-	-	-
Pennsylvania	1,000	4,000	2,000	-	-	-
Texas	380	640	100	20	80	20
Virginia	150	880	200	-	-	-
United States	2,600	7,130	6,382	30	140	30

- Represents zero.

Grape Fresh and Processed Utilization, Price, and Value – States and United States: 2010-2012

Utilization, State, and type	Quantity			Price per ton		
	2010 (tons)	2011 (tons)	2012 (tons)	2010 (dollars)	2011 (dollars)	2012 (dollars)
Fresh						
California	984,000	975,000	994,000	474.00	974.00	1,330.00
Wine	40,000	40,000	40,000	770.00	712.00	(D)
Table	829,000	831,000	831,000	420.00	947.00	1,370.00
Raisin	115,000	104,000	123,000	760.00	1,290.00	(D)
Michigan	1,100	1,100	450	2,400.00	2,400.00	2,450.00
Missouri	60	60	50	1,300.00	950.00	1,150.00
New York	4,000	5,000	3,000	1,480.00	1,800.00	1,690.00
North Carolina	450	380	380	3,100.00	2,540.00	2,455.00
Ohio	40	80	53	1,280.00	738.00	1,773.00
Pennsylvania	300	400	300	1,300.00	1,500.00	1,500.00
Texas	400	810	100	1,330.00	1,870.00	1,240.00
Other States ¹	2,760	1,850	2,050	1,600.00	1,940.00	2,040.00
United States	993,110	984,680	1,000,383	485.00	983.00	1,340.00
Processed						
California	5,789,000	5,707,000	5,684,000	474.00	510.00	550.00
Wine	3,589,000	3,347,000	3,700,000	574.00	637.00	637.00
Table	182,000	201,000	156,000	211.00	239.00	269.00
Raisin	2,018,000	2,159,000	1,828,000	319.00	338.00	397.00
Michigan	34,900	92,300	37,750	368.00	339.00	445.00
Missouri	5,040	5,140	4,550	880.00	830.00	720.00
New York	172,000	183,000	109,000	361.00	334.00	433.00
North Carolina	4,500	4,600	4,420	700.00	900.00	800.00
Ohio	3,010	7,250	5,240	704.00	394.00	677.00
Oregon ²	31,200	41,500	46,000	2,030.00	1,950.00	2,050.00
Pennsylvania	81,700	86,600	58,700	303.00	299.00	343.00
Texas	8,100	3,800	7,200	1,250.00	1,440.00	1,450.00
Virginia	6,450	6,020	6,700	1,700.00	1,540.00	1,630.00
Washington	336,000	316,000	370,000	637.00	598.00	638.00
Wine	160,000	142,000	185,000	1,040.00	987.00	990.00
Juice	176,000	174,000	185,000	270.00	281.00	285.00
Other States ¹	3,530	2,550	3,050	746.00	675.00	895.00
United States	6,475,430	6,455,760	6,336,610	487.00	515.00	564.00

See footnote(s) at end of table.

--continued

**Grape Fresh and Processed Utilization, Price, and Value – States and United States:
2010-2012 (continued)**

Utilization, State, and type	Value of utilized production		
	2010 (1,000 dollars)	2011 (1,000 dollars)	2012 (1,000 dollars)
Fresh			
California	466,380	949,597	1,326,720
Wine	30,800	28,480	(D)
Table	348,180	786,957	1,138,470
Raisin	87,400	134,160	(D)
Michigan	2,640	2,640	1,103
Missouri	78	57	58
New York	5,920	9,000	5,070
North Carolina	1,395	965	933
Ohio	51	59	94
Pennsylvania	390	600	450
Texas	532	1,515	124
Other States ¹	4,421	3,590	4,175
United States	481,807	968,023	1,338,727
Processed			
California	2,742,660	2,909,605	3,123,906
Wine	2,060,086	2,132,039	2,356,900
Table	38,344	48,010	41,960
Raisin	644,230	729,556	725,046
Michigan	12,857	31,317	16,789
Missouri	4,435	4,266	3,276
New York	62,148	61,056	47,182
North Carolina	3,150	4,140	3,536
Ohio	2,118	2,857	3,548
Oregon ²	63,336	80,925	94,300
Pennsylvania	24,762	25,907	20,105
Texas	10,125	5,472	10,440
Virginia	10,965	9,271	10,921
Washington	213,920	189,048	235,875
Wine	166,400	140,154	183,150
Juice	47,520	48,894	52,725
Other States ¹	2,632	1,720	2,730
United States	3,153,108	3,325,584	3,572,608

(D) Withheld to avoid disclosing data for individual operations.

¹ Includes data withheld above and/or data for States not listed in this table.

² Includes small quantities sold fresh.

Grape Processed Utilization and Price by Use – States and United States: 2010-2012

Utilization, State, and type	Quantity			Price per ton		
	2010 (tons)	2011 (tons)	2012 (tons)	2010 (dollars)	2011 (dollars)	2012 (dollars)
Canned						
California						
Raisin	25,000	25,000	20,000	340.00	355.00	400.00
Juice ^{1 2}						
Michigan	31,100	85,500	30,800	279.00	278.00	289.00
New York	124,000	130,000	69,000	291.00	265.00	318.00
Ohio	1,400	5,800	2,190	340.00	280.00	319.00
Pennsylvania	71,400	74,800	52,500	278.00	270.00	305.00
Washington	176,000	174,000	185,000	270.00	281.00	285.00
United States	403,900	470,100	339,490	279.00	274.00	295.00
Wine						
California	3,987,000	3,875,000	4,100,000	537.00	584.00	603.00
Wine	3,589,000	3,347,000	3,700,000	574.00	637.00	637.00
Table	124,000	155,000	100,000	174.00	219.00	219.00
Raisin	274,000	373,000	300,000	215.00	265.00	315.00
Michigan	3,800	6,800	6,950	1,100.00	1,110.00	1,135.00
Missouri	5,040	5,140	4,550	880.00	830.00	720.00
New York	48,000	53,000	40,000	543.00	502.00	631.00
North Carolina	4,500	4,600	4,420	700.00	900.00	800.00
Ohio	1,610	1,450	3,050	1,020.00	850.00	934.00
Oregon ²	31,200	41,500	46,000	2,030.00	1,950.00	2,050.00
Pennsylvania	10,300	11,800	6,200	477.00	484.00	660.00
Texas	8,100	3,800	7,200	1,250.00	1,440.00	1,450.00
Virginia	6,450	6,020	6,700	1,700.00	1,540.00	1,630.00
Washington	160,000	142,000	185,000	1,040.00	987.00	990.00
Other States ^{3 4}	3,530	2,550	3,050	746.00	675.00	895.00
United States	4,269,530	4,153,660	4,413,120	571.00	614.00	639.00
Dried (fresh basis)						
California	1,777,000	1,807,000	1,564,000	334.00	352.00	411.00
Table	58,000	46,000	56,000	289.00	306.00	358.00
Raisin	1,719,000	1,761,000	1,508,000	336.00	353.00	413.00

¹ Includes small quantities of other processed utilizations (jam, jelly, etc.).

² Includes small quantities for other uses.

³ Includes data withheld above and/or data for States not listed in this table.

⁴ Some grapes processed for juice are included in Other States wine to avoid disclosure of individual operations.

Grape Processed Utilization by Variety – States and United States: 2010-2012

Variety and State	2010	2011	2012
	(tons)	(tons)	(tons)
Concord			
Michigan	18,100	55,100	21,000
New York	117,300	124,700	64,600
Ohio	2,900	6,210	4,430
Pennsylvania	71,900	74,500	45,500
Washington	162,000	156,000	167,000
Other States ¹	790	490	580
United States	372,990	417,000	303,110
Niagara			
Michigan	13,000	31,000	10,800
New York	21,600	20,300	11,400
Ohio	290	630	450
Pennsylvania	6,300	6,800	9,500
Washington	14,000	18,000	18,000
United States	55,190	76,730	50,150

¹ Includes data withheld above and/or data for States not listed in this table.

Concord Grapes for Processing Marketing Year Average Prices – New York and Pennsylvania: 2010-2012

State	2010	2011	2012
	(dollars per ton)	(dollars per ton)	(dollars per ton)
New York	287.00	262.00	316.00
Pennsylvania	274.00	268.00	301.00

Peach Bearing Acreage, Yield, Production, Price, and Value – States and United States: 2010-2012

State	Bearing acreage			Yield per acre ¹		
	2010 (acres)	2011 (acres)	2012 (acres)	2010 (tons)	2011 (tons)	2012 (tons)
Alabama	1,900	2,200	2,400	3.16	2.59	2.29
Arkansas	1,200	1,200	1,200	2.50	1.50	2.50
California	50,000	47,500	47,000	16.30	16.30	15.20
Freestone	27,000	25,000	24,000	14.30	15.20	14.30
Clingstone	23,000	22,500	23,000	18.80	17.50	16.00
Colorado	2,400	2,400	2,500	5.83	5.00	6.80
Connecticut	400	400	400	3.00	3.00	3.38
Georgia	10,800	10,200	9,900	3.70	3.53	3.36
Idaho	1,300	1,300	1,300	5.69	5.85	5.85
Illinois	1,600	1,600	1,600	5.69	5.80	4.61
Maryland	850	800	800	4.71	4.86	5.43
Massachusetts	430	430	430	4.07	4.07	3.60
Michigan	4,000	3,700	3,600	3.50	4.50	0.55
Missouri	1,700	1,500	1,500	2.47	3.40	2.40
New Jersey	6,100	5,500	5,300	5.90	5.82	5.66
New York	1,600	1,600	1,600	3.69	4.25	1.63
North Carolina	1,100	1,100	1,100	5.00	4.82	4.82
Ohio	1,200	1,200	1,400	5.20	5.03	3.54
Pennsylvania	4,400	4,400	4,400	4.82	4.02	4.73
South Carolina	15,500	15,500	17,000	7.10	6.13	4.41
Texas	5,400	4,300	4,000	2.59	1.23	2.75
Utah	1,500	1,500	1,500	2.87	2.87	3.53
Virginia	1,000	1,000	1,000	6.21	6.50	6.50
Washington	2,300	2,200	2,200	6.09	6.00	5.91
West Virginia	950	950	750	5.58	6.00	5.60
United States	117,630	112,480	112,880	9.78	9.53	8.67
State	Total production			Utilized production		
	2010 (tons)	2011 (tons)	2012 (tons)	2010 (tons)	2011 (tons)	2012 (tons)
Alabama	6,000	5,700	5,500	4,500	5,300	4,000
Arkansas	3,000	1,800	3,000	2,830	1,760	2,790
California	817,000	773,000	713,000	817,000	773,000	713,000
Freestone	385,000	380,000	344,000	385,000	380,000	344,000
Clingstone	432,000	393,000	369,000	432,000	393,000	369,000
Colorado	14,000	12,000	17,000	12,000	11,200	16,000
Connecticut	1,200	1,200	1,350	1,200	1,100	1,300
Georgia	40,000	36,000	33,300	38,500	33,600	31,100
Idaho	7,400	7,600	7,600	6,500	6,700	6,800
Illinois	9,100	9,280	7,380	7,580	7,890	6,970
Maryland	4,000	3,890	4,340	3,990	3,880	4,260
Massachusetts	1,750	1,750	1,550	1,750	1,750	1,500
Michigan	14,000	16,650	1,980	13,830	16,400	1,980
Missouri	4,200	5,100	3,600	4,200	5,100	3,600
New Jersey	36,000	32,000	30,000	34,000	30,000	30,000
New York	5,900	6,800	2,600	5,850	6,750	2,550
North Carolina	5,500	5,300	5,300	5,470	5,150	5,100
Ohio	6,240	6,030	4,960	5,980	5,840	4,940
Pennsylvania	21,200	17,690	20,800	20,800	17,290	20,350
South Carolina	110,000	95,000	75,000	102,800	77,600	70,250
Texas	14,000	5,300	11,000	13,000	4,650	10,200
Utah	4,300	4,300	5,300	4,240	4,100	5,200
Virginia	6,210	6,500	6,500	5,570	5,220	6,430
Washington	14,000	13,200	13,000	14,000	13,200	13,000
West Virginia	5,300	5,700	4,200	5,000	5,500	4,100
United States	1,150,300	1,071,790	978,260	1,130,590	1,042,980	965,420

See footnote(s) at end of table.

--continued

**Peach Bearing Acreage, Yield, Production, Price, and Value – States and United States:
2010-2012 (continued)**

State	Price per ton			Value of utilized production		
	2010 (dollars)	2011 (dollars)	2012 (dollars)	2010 (1,000 dollars)	2011 (1,000 dollars)	2012 (1,000 dollars)
Alabama	1,030.00	1,050.00	1,240.00	4,632	5,565	4,960
Arkansas	1,350.00	1,550.00	1,650.00	3,821	2,728	4,604
California	354.00	374.00	464.00	289,096	289,197	330,694
Freestone	386.00	447.00	588.00	148,728	170,019	202,297
Clingstone	325.00	303.00	348.00	140,368	119,178	128,397
Colorado	1,870.00	2,000.00	1,580.00	22,440	22,400	25,280
Connecticut	2,100.00	2,100.00	2,300.00	2,520	2,310	2,990
Georgia	817.00	930.00	961.00	31,460	31,260	29,892
Idaho	908.00	1,160.00	1,340.00	5,900	7,800	9,098
Illinois	1,060.00	1,260.00	1,390.00	8,065	9,918	9,672
Maryland	1,140.00	1,220.00	1,190.00	4,559	4,735	5,078
Massachusetts	2,760.00	3,140.00	3,200.00	4,825	5,495	4,800
Michigan	921.00	731.00	1,330.00	12,731	11,995	2,624
Missouri	1,300.00	1,200.00	1,200.00	5,460	6,120	4,320
New Jersey	920.00	1,220.00	1,320.00	31,280	36,600	39,600
New York	1,200.00	1,240.00	1,580.00	7,023	8,352	4,022
North Carolina	1,090.00	1,000.00	1,220.00	5,962	5,150	6,222
Ohio	1,580.00	1,640.00	1,560.00	9,448	9,578	7,706
Pennsylvania	1,150.00	1,360.00	1,060.00	23,881	23,462	21,653
South Carolina	955.00	970.00	1,050.00	98,130	75,247	74,023
Texas	2,100.00	2,000.00	1,850.00	27,300	9,300	18,870
Utah	691.00	1,010.00	1,080.00	2,929	4,144	5,633
Virginia	683.00	858.00	933.00	3,804	4,479	5,999
Washington	620.00	592.00	627.00	8,675	7,809	8,153
West Virginia	925.00	852.00	1,300.00	4,625	4,686	5,330
United States	547.00	564.00	654.00	618,566	588,330	631,223

¹ Yield is based on total production.

Peach Utilized Production, Price, and Value by Utilization – States and United States: 2010-2012

Use and State	Quantity			Price per unit		
	2010 (tons)	2011 (tons)	2012 (tons)	2010 (dollars per ton)	2011 (dollars per ton)	2012 (dollars per ton)
Fresh						
California, Freestone	272,000	282,000	250,000	454.00	525.00	726.00
Connecticut	1,200	1,100	1,300	2,100.00	2,100.00	2,300.00
Georgia	37,000	(D)	(D)	830.00	(D)	(D)
Massachusetts	(D)	(D)	1,500	(D)	(D)	3,200.00
Missouri	4,200	5,100	3,600	1,300.00	1,200.00	1,200.00
Ohio	5,980	5,840	4,940	1,580.00	1,640.00	1,560.00
South Carolina	99,800	74,900	69,700	971.00	980.00	1,060.00
Texas	13,000	4,650	10,200	2,100.00	2,000.00	1,850.00
Virginia	5,570	5,220	6,430	683.00	858.00	933.00
West Virginia	5,000	5,500	4,100	925.00	852.00	1,300.00
Other States ¹	123,470	147,380	138,550	1,160.00	1,230.00	1,250.00
United States	567,220	531,690	490,320	788.00	826.00	975.00
Processed						
California						
Clingstone	432,000	393,000	369,000	325.00	303.00	348.00
Freestone ²	113,000	98,000	94,000	246.00	233.00	242.00
Georgia	1,500	(D)	(D)	500.00	(D)	(D)
South Carolina	3,000	2,700	550	408.00	683.00	256.00
Other States ¹	13,870	17,590	11,550	274.00	346.00	341.00
United States ³	563,370	511,290	475,100	304.00	292.00	323.00

See footnote(s) at end of table.

--continued

**Peach Utilized Production, Price, and Value by Utilization – States and United States:
2010-2012 (continued)**

Use and State	Value of utilized production		
	2010 (1,000 dollars)	2011 (1,000 dollars)	2012 (1,000 dollars)
Fresh			
California, Freestone	123,488	148,050	181,500
Connecticut	2,520	2,310	2,990
Georgia	30,710	(D)	(D)
Massachusetts	(D)	(D)	4,800
Missouri	5,460	6,120	4,320
Ohio	9,448	9,578	7,706
South Carolina	96,906	73,402	73,882
Texas	27,300	9,300	18,870
Virginia	3,804	4,479	5,999
West Virginia	4,625	4,686	5,330
Other States ¹	142,929	181,332	172,551
United States	447,190	439,257	477,948
Processed			
California			
Clingstone	140,368	119,178	128,397
Freestone ²	25,240	21,969	20,797
Georgia	750	(D)	(D)
South Carolina	1,224	1,845	141
Other States ¹	3,794	6,081	3,940
United States ³	171,376	149,073	153,275

(D) Withheld to avoid disclosing data for individual operations.

¹ Includes data withheld above and/or data for States not listed in this table.

² California Freestone quantity and value include dried, price excludes dried.

³ United States quantity, price, and value include dried.

Peach Processed Utilization and Price by Use – States and United States: 2010-2012

Use and State	Quantity			Price per ton		
	2010	2011	2012	2010	2011	2012
	(tons)	(tons)	(tons)	(dollars)	(dollars)	(dollars)
Canned						
California						
Clingstone	414,000	377,000	352,000	327.00	307.00	347.00
Other States ¹	14,470	10,190	12,640	349.00	401.00	275.00
United States	428,470	387,190	364,640	328.00	310.00	345.00
Frozen						
California						
Freestone	87,600	84,600	75,200	252.00	240.00	245.00
Other States ¹	16,800	16,000	15,010	342.00	402.00	408.00
United States	104,400	100,600	90,210	266.00	266.00	272.00
Dried						
California						
Freestone	12,700	4,600	9,800	44.00	42.00	41.00
United States	12,700	4,600	9,800	44.00	42.00	41.00
Other ²						
United States	17,800	18,900	10,450	144.00	124.00	263.00

¹ Includes data withheld above and/or data for States not listed in this table.

² Pickled, wine, brandy, juice, and baby food.

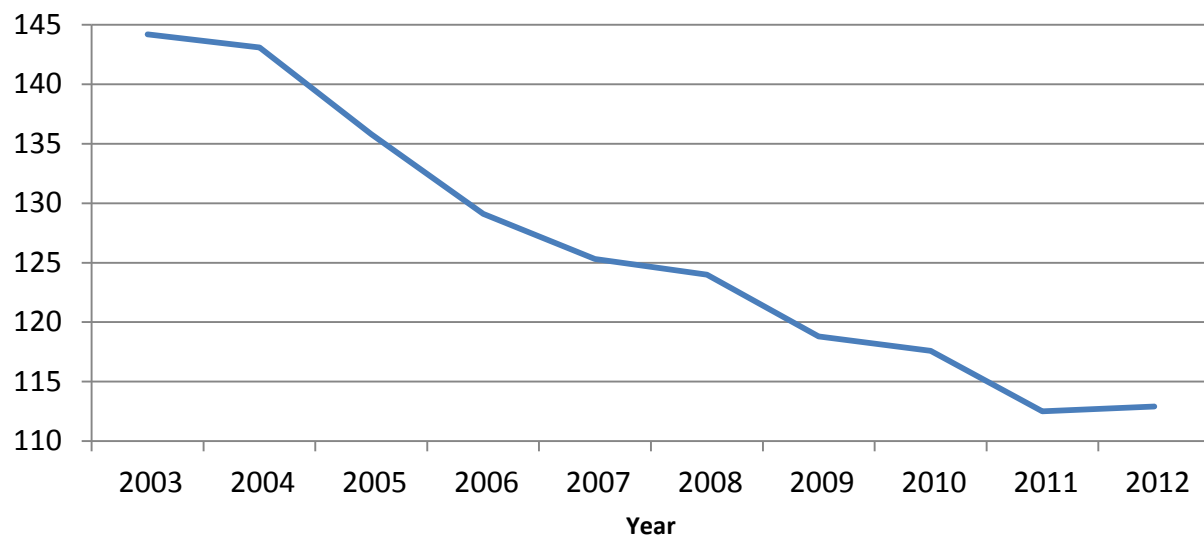
Unutilized Peach Production – States and United States: 2010-2012

Crop and State	Unharvested production			Harvested not sold		
	2010	2011	2012	2010	2011	2012
	(tons)	(tons)	(tons)	(tons)	(tons)	(tons)
Alabama	1,200	300	1,450	300	100	50
Arkansas	150	20	130	20	20	80
Colorado	1,500	-	1,000	500	800	-
Connecticut	-	100	50	-	-	-
Georgia	300	300	200	1,200	2,100	2,000
Idaho	-	-	-	900	900	800
Illinois	560	330	190	960	1,060	220
Maryland	-	-	30	10	10	50
Massachusetts	-	-	50	-	-	-
Michigan	170	250	-	-	-	-
New Jersey	2,000	2,000	-	-	-	-
New York	-	-	-	50	50	50
North Carolina	30	50	150	-	100	50
Ohio	130	130	10	130	60	10
Pennsylvania	100	400	210	300	-	240
South Carolina	1,100	4,400	3,700	6,100	13,000	1,050
Texas	600	370	360	400	280	440
Utah	30	160	60	30	40	40
Virginia	-	500	70	640	780	-
West Virginia	150	150	10	150	50	90
United States	8,020	9,460	7,670	11,690	19,350	5,170

- Represents zero.

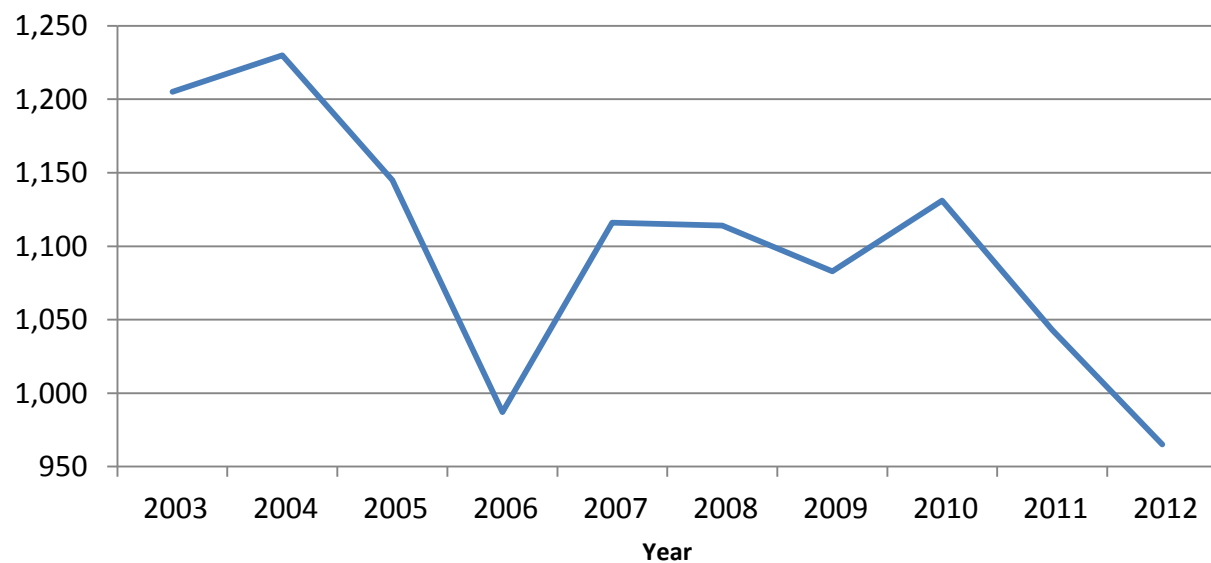
Peach Bearing Acreage United States: 2003-2012

(000) Acres



Peach Utilized Production United States: 2003-2012

(000) Tons



All Pear Bearing Acreage, Yield, Production, Utilization, Price, and Value – States and United States: 2010-2012

State and year	Bearing acreage	Yield per acre ¹	Production		Utilization	
			Total	Utilized	Fresh	Processed
	(acres)	(tons)	(tons)	(tons)	(tons)	(tons)
California						
2010	14,000	15.70	220,000	220,000	(D)	(D)
2011	14,000	18.00	252,000	252,000	(D)	(D)
2012	14,000	15.40	215,000	215,000	(D)	(D)
Michigan						
2010	800	1.13	900	900	(D)	(D)
2011	700	6.29	4,400	4,400	(D)	(D)
2012	700	0.06	40	40	(D)	(D)
New York						
2010	1,200	6.92	8,300	8,200	(D)	(D)
2011	1,200	10.10	12,100	11,600	(D)	(D)
2012	1,200	2.58	3,100	3,100	(D)	(D)
Oregon						
2010	16,200	11.90	192,000	192,000	(D)	(D)
2011	16,200	14.00	227,000	227,000	(D)	(D)
2012	16,200	15.30	248,000	248,000	(D)	(D)
Pennsylvania						
2010	800	3.00	2,400	2,300	(D)	(D)
2011	800	2.78	2,220	2,110	(D)	(D)
2012	800	1.38	1,100	990	(D)	(D)
Washington						
2010	23,000	17.00	390,000	390,000	(D)	(D)
2011	21,500	21.80	468,000	468,000	(D)	(D)
2012	21,500	18.20	391,000	391,000	(D)	(D)
United States ²						
2010	56,000	14.50	813,600	813,400	531,430	281,970
2011	54,400	17.80	965,720	965,110	643,710	321,400
2012	54,400	15.80	858,240	858,130	558,320	299,810

See footnote(s) at end of table.

--continued

All Pear Bearing Acreage, Yield, Production, Utilization, Price, and Value – States and United States: 2010-2012 (continued)

State and year	Price per ton			Value of production		
	Fresh	Processed excludes dried	All	Fresh	Processed includes dried	All
	(dollars)	(dollars)	(dollars)	(1,000 dollars)	(1,000 dollars)	(1,000 dollars)
California						
2010	(D)	(D)	435.00	(D)	(D)	95,690
2011	(D)	(D)	388.00	(D)	(D)	97,805
2012	(D)	(D)	437.00	(D)	(D)	93,977
Michigan						
2010	(D)	(D)	348.00	(D)	(D)	313
2011	(D)	(D)	275.00	(D)	(D)	1,209
2012	(D)	(D)	625.00	(D)	(D)	25
New York						
2010	(D)	(D)	601.00	(D)	(D)	4,932
2011	(D)	(D)	600.00	(D)	(D)	6,956
2012	(D)	(D)	758.00	(D)	(D)	2,350
Oregon						
2010	(D)	(D)	499.00	(D)	(D)	95,896
2011	(D)	(D)	341.00	(D)	(D)	77,406
2012	(D)	(D)	541.00	(D)	(D)	134,241
Pennsylvania						
2010	(D)	(D)	1,100.00	(D)	(D)	2,533
2011	(D)	(D)	995.00	(D)	(D)	2,100
2012	(D)	(D)	794.00	(D)	(D)	786
Washington						
2010	(D)	(D)	481.00	(D)	(D)	187,591
2011	(D)	(D)	387.00	(D)	(D)	181,076
2012	(D)	(D)	526.00	(D)	(D)	205,734
United States ²						
2010	599.00	243.00	476.00	318,528	68,427	386,955
2011	451.00	237.00	380.00	290,233	76,319	366,552
2012	656.00	237.00	509.00	366,006	71,107	437,113

(D) Withheld to avoid disclosing data for individual operations.

¹ Yield is based on total production.

² Processed mostly canned, but includes small quantities dried and other uses not published separately to avoid disclosure of individual operations.

Unutilized Pear Production – States and United States: 2010-2012

State	Unharvested production			Harvested not sold		
	2010	2011	2012	2010	2011	2012
	(tons)	(tons)	(tons)	(tons)	(tons)	(tons)
New York	100	500	-	-	-	-
Pennsylvania	-	10	20	100	100	90
United States	100	510	20	100	100	90

- Represents zero.

Pear Bearing Acreage, Yield, Production, Utilization, Price, and Value by Type – States and United States: 2010-2012

Type, State and year	Bearing acreage	Yield per acre ¹	Production		Utilization	
			Total	Utilized	Fresh	Processed
	(acres)	(tons)	(tons)	(tons)	(tons)	(tons)
Bartlett ²						
California						
2010	10,000	17.00	170,000	170,000	55,000	115,000
2011	10,000	19.50	195,000	195,000	64,000	131,000
2012	10,000	16.50	165,000	165,000	55,000	110,000
Oregon						
2010	4,200	11.20	47,000	47,000	31,000	16,000
2011	4,200	11.20	47,000	47,000	29,000	18,000
2012	4,200	14.50	61,000	61,000	30,000	31,000
Washington						
2010	10,000	16.80	168,000	168,000	63,000	105,000
2011	9,500	19.80	188,000	188,000	68,000	120,000
2012	9,500	19.10	181,000	181,000	76,000	105,000
United States						
2010	24,200	15.90	385,000	385,000	149,000	236,000
2011	23,700	18.10	430,000	430,000	161,000	269,000
2012	23,700	17.20	407,000	407,000	161,000	246,000
Other ³						
California						
2010	4,000	12.50	50,000	50,000	(D)	(D)
2011	4,000	14.30	57,000	57,000	(D)	(D)
2012	4,000	12.50	50,000	50,000	(D)	(D)
Oregon						
2010	12,000	12.10	145,000	145,000	(D)	(D)
2011	12,000	15.00	180,000	180,000	(D)	(D)
2012	12,000	15.60	187,000	187,000	(D)	(D)
Washington						
2010	13,000	17.10	222,000	222,000	(D)	(D)
2011	12,000	23.30	280,000	280,000	(D)	(D)
2012	12,000	17.50	210,000	210,000	(D)	(D)
United States						
2010	29,000	14.40	417,000	417,000	373,000	44,000
2011	28,000	18.50	517,000	517,000	469,000	48,000
2012	28,000	16.00	447,000	447,000	393,500	53,500

See footnote(s) at end of table.

--continued

Pear Bearing Acreage, Yield, Production, Utilization, Price, and Value by Type – States and United States: 2010-2012 (continued)

Type, State and year	Price per ton			Value of production		
	Fresh	Processed excludes dried	All	Fresh	Processed includes dried	All
	(dollars)	(dollars)	(dollars)	(1,000 dollars)	(1,000 dollars)	(1,000 dollars)
Bartlett ²						
California						
2010	501.00	321.00	379.00	27,555	36,825	64,380
2011	340.00	298.00	311.00	21,760	38,949	60,709
2012	470.00	322.00	371.00	25,850	35,332	61,182
Oregon						
2010	575.00	248.00	464.00	17,825	3,971	21,796
2011	495.00	248.00	400.00	14,355	4,461	18,816
2012	671.00	245.00	455.00	20,130	7,606	27,736
Washington						
2010	583.00	239.00	368.00	36,729	25,054	61,783
2011	544.00	242.00	351.00	36,992	29,082	66,074
2012	656.00	235.00	412.00	49,856	24,668	74,524
United States						
2010	551.00	279.00	384.00	82,109	65,850	147,959
2011	454.00	270.00	339.00	73,107	72,492	145,599
2012	595.00	275.00	402.00	95,836	67,606	163,442
Other ³						
California						
2010	(D)	(D)	626.00	(D)	(D)	31,310
2011	(D)	(D)	651.00	(D)	(D)	37,096
2012	(D)	(D)	656.00	(D)	(D)	32,795
Oregon						
2010	(D)	(D)	511.00	(D)	(D)	74,100
2011	(D)	(D)	326.00	(D)	(D)	58,590
2012	(D)	(D)	570.00	(D)	(D)	106,505
Washington						
2010	(D)	(D)	567.00	(D)	(D)	125,808
2011	(D)	(D)	411.00	(D)	(D)	115,002
2012	(D)	(D)	625.00	(D)	(D)	131,210
United States						
2010	614.00	46.40	554.00	229,176	2,042	231,218
2011	444.00	52.60	408.00	208,165	2,523	210,688
2012	679.00	63.60	605.00	267,105	3,405	270,510

(D) Withheld to avoid disclosing data for individual operations.

¹ Yield is based on total production.

² Processed mostly canned, but includes small quantities dried and other uses not published separately to avoid disclosure of individual operations.

³ Processed mostly juice, but includes small quantities canned and other uses not published separately to avoid disclosure of individual operations.

Tropical Fruit Acreage Harvested, Yield, Utilized Production, Utilization, Price, and Value by Crop – Hawaii: 2010-2012

[Blank cells indicate estimation period has not yet begun]

Crop and year	Acreage harvested	Yield per acre	Utilized production	Utilization		
				Fresh	Processed	
	(acres)	(1,000 pounds)	(1,000 pounds)	(1,000 pounds)	(1,000 pounds)	
Bananas						
2010	1,100	16.2	17,800	17,800	(NA)	
2011	1,000	17.4	17,400	17,400	(NA)	
2012						
Guavas						
2010	115	11.3	1,300	(NA)	1,300	
2011	110	17.3	1,900	(NA)	1,900	
2012						
Papayas						
2010	1,350	22.3	30,100	29,200	900	
2011	1,300	22.0	28,600	27,700	900	
2012						
Crop and year	Price			Value of production		
	Fresh	Processed	All	Fresh	Processed	Total
	(dollars per pound)	(dollars per pound)	(dollars per pound)	(1,000 dollars)	(1,000 dollars)	(1,000 dollars)
Bananas						
2010	0.600	(X)	0.600	10,680	(X)	10,680
2011	0.650	(X)	0.650	11,310	(X)	11,310
2012						
Guavas						
2010	(X)	0.169	0.169	(X)	220	220
2011	(X)	0.170	0.170	(X)	323	323
2012						
Papayas						
2010	0.380	0.030	0.370	11,096	27	11,123
2011	0.350	0.030	0.340	9,695	27	9,722
2012						

(NA) Not available.
(X) Not applicable.

This page intentionally left blank.

Apple for Fresh Use Monthly Average Prices Received – States and United States: July 2011-August 2012

[Equivalent packinghouse-door returns for California, Michigan, New York, and Washington; price at point of first sale for other States. Prices for July and August 2012 are preliminary for all States and the United States except Washington. These two months represent the start of the 2012 crop marketing season in most States, but in Washington they are the final months of the 2011 crop marketing season]

State	2011						2012
	July	August	September	October	November	December	January
	(dollars per pound)	(dollars per pound)	(dollars per pound)	(dollars per pound)	(dollars per pound)	(dollars per pound)	(dollars per pound)
California	(NA)	0.634	(S)	0.481	(NA)	(NA)	(NA)
Michigan	(NA)	(NA)	0.420	0.385	0.350	0.350	0.320
New York	(NA)	(NA)	0.393	0.376	0.363	0.359	0.314
Ohio	0.640	0.510	0.490	0.490	0.430	0.420	0.450
Pennsylvania	(NA)	(S)	(S)	(S)	0.306	0.285	(S)
Virginia	(NA)	(NA)	0.430	0.400	0.400	0.330	0.320
Washington	0.330	0.422	0.524	0.444	0.433	0.380	0.373
United States	0.358	0.458	0.421	0.431	0.344	0.302	0.320

State	2012						
	February	March	April	May	June	July	August
	(dollars per pound)	(dollars per pound)	(dollars per pound)	(dollars per pound)	(dollars per pound)	(dollars per pound)	(dollars per pound)
California	(NA)	(NA)	(NA)	(NA)	(NA)	(NA)	0.756
Michigan	0.320	0.320	0.300	0.300	(NA)	(NA)	(NA)
New York	0.300	0.298	0.285	0.285	0.323	(NA)	(NA)
Ohio	0.400	0.470	0.520	0.520	0.670	0.590	0.590
Pennsylvania	0.288	0.402	(NA)	(NA)	(NA)	(NA)	0.526
Virginia	0.350	0.350	(NA)	(NA)	(NA)	(NA)	(NA)
Washington	0.355	0.338	0.329	0.351	0.390	0.419	0.490
United States	0.306	0.332	0.300	0.300	0.384	0.419	0.529

(NA) Not available.

(S) Insufficient number of reports to establish an estimate.

Apples for Fresh Use Monthly Average Prices Received – United States: July 2008 - December 2012

[Equivalent packinghouse door returns for California, Michigan, New York, and Washington]

Year	Jul	Aug	Sep	Oct	Nov	Dec	Jan ¹	Feb	Mar	Apr	May	Jun
	(\$/lb)	(\$/lb)	(\$/lb)	(\$/lb)	(\$/lb)	(\$/lb)	(\$/lb)	(\$/lb)	(\$/lb)	(\$/lb)	(\$/lb)	(\$/lb)
2008	0.446	0.537	0.506	0.425	0.360	0.293	0.272	0.237	0.215	0.204	0.187	0.181
2009	0.172	0.237	0.337	0.274	0.256	0.227	0.218	0.243	0.220	0.209	0.229	0.208
2010	0.299	0.291	0.324	0.332	0.303	0.268	0.251	0.238	0.268	0.269	0.277	0.278
2011	0.358	0.458	0.421	0.431	0.344	0.302	0.320	0.306	0.332	0.300	0.300	0.384
2012	0.419	0.529	0.616	0.535	0.479	0.474						

¹ January of the following year.

Grapes for Fresh Use Monthly Average Prices Received – United States: May 2008 - December 2012

[Equivalent packinghouse door returns]

Year	May	June	July	August	September	October	November	December
	(dollars per ton)	(dollars per ton)	(dollars per ton)	(dollars per ton)	(dollars per ton)	(dollars per ton)	(dollars per ton)	(dollars per ton)
2008	420	590	660	530	480	370	360	300
2009	1,380	1,120	610	310	470	630	630	1,220
2010	(S)	650	460	430	420	430	500	750
2011	(S)	1,460	1,480	960	820	790	980	1,040
2012	(S)	1,730	1,030	980	1,130	1,540	1,770	1,780

(S) Insufficient number of reports to establish an estimate.

Peaches for Fresh Use Monthly Average Prices Received – United States: May 2008 - September 2012

[Equivalent packinghouse door returns for California and Washington; price at point of first sale for other States]

State	May	June	July	August	September
	(dollars per ton)	(dollars per ton)	(dollars per ton)	(dollars per ton)	(dollars per ton)
2008	960	537	485	510	468
2009	846	794	644	676	655
2010	1,080	587	573	568	506
2011	1,290	661	662	711	564
2012	1,100	836	790	737	689

Pears for Fresh Use Monthly Average Prices Received – United States: July 2008 - December 2012

[Equivalent packinghouse-door returns for California, New York, and Washington; price at point of first sale for other States]

Year	Jul	Aug	Sep	Oct	Nov	Dec	Jan ¹	Feb	Mar	Apr	May	Jun
	(\$/ton)	(\$/ton)	(\$/ton)	(\$/ton)	(\$/ton)	(\$/ton)	(\$/ton)	(\$/ton)	(\$/ton)	(\$/ton)	(\$/ton)	(\$/ton)
2008	638	546	543	628	582	574	539	473	452	462	518	642
2009	537	424	383	481	449	398	381	368	350	426	533	640
2010	719	555	550	622	548	587	639	636	625	599	571	565
2011	561	576	483	511	494	453	428	386	301	286	353	594
2012	673	583	601	692	686	713						

¹ January of the following year.

Tree Nut Bearing Acreage, Yield, Production, Price, and Value by Crop – States: 2010-2012

[Blank cells indicate estimation period has not yet begun]

Crop, State, and year	Bearing acreage	Yield per acre ¹	Utilized production	Price per unit	Value of utilized production
	(acres)	(tons)	(tons)	(dollars per ton)	(1,000 dollars)
English walnuts, in-shell					
California					
2010	237,000	2.13	504,000	2,040	1,028,160
2011	245,000	1.88	461,000	2,900	1,336,900
2012	245,000	1.92	470,000		
Hazelnuts, in-shell					
Oregon					
2010	29,000	0.97	28,000	2,410	67,480
2011	28,500	1.35	38,500	2,330	89,705
2012	29,000	1.20	34,700	1,830	63,420
	(acres)	(pounds)	(1,000 pounds)	(dollars per pound)	(1,000 dollars)
Almonds, shelled ^{2 3}					
California					
2010	740,000	2,220	1,640,000	1.790	2,903,380
2011	760,000	2,670	2,030,000	1.990	4,007,860
2012	780,000	2,560	2,000,000	2.200	4,347,200
Macadamia nuts, in-shell					
Hawaii					
2010	15,000	2,670	40,000	0.750	30,000
2011	15,000	3,270	49,000	0.780	38,220
2012	15,000	2,930	44,000	0.800	35,200
Pistachios, in-shell					
California					
2010	137,000	3,810	522,000	2.220	1,158,840
2011	153,000	2,900	444,000	1.980	879,120
2012	178,000	3,100	551,000	2.020	1,113,020

¹ Yield is based on utilized production.

² Price and value are based on the edible portion of the crop only. Production includes inedible quantities of no value as follows: 2010 - 18.0 million pounds; 2011 - 16.0 million pounds; 2012 - 24.0 million pounds.

³ Shelling ratios are: 2010 - 0.580; 2011 - 0.596; 2012 - 0.578.

Tree Nut Utilization and Meat Production by Crop – States and United States: 2010-2012

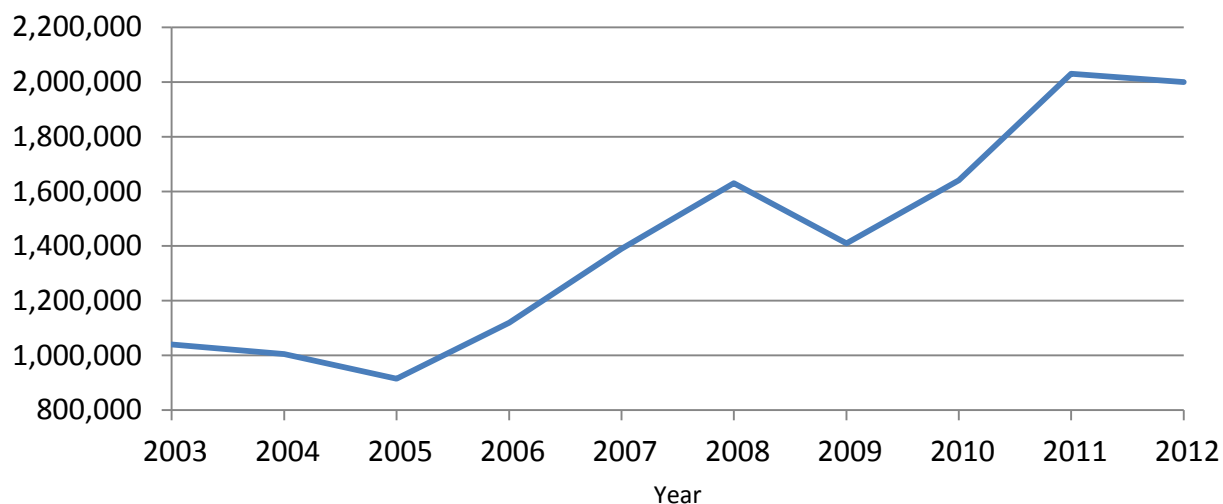
[Blank cells indicate estimation period has not yet begun. Estimates for 2012 will be published on July 17, 2013.]

Crop, State, and year	Utilized production		Meat production of nuts sold shelled (tons)
	Sold in-shell (tons)	Sold shelled ¹ (tons)	
English walnuts			
California			
2010	141,000	363,000	159,000
2011	125,000	336,000	146,000
2012			
Hazelnuts			
Oregon			
2010	20,050	7,950	3,100
2011	29,300	9,200	3,730
2012			
	(1,000 pounds)	(1,000 pounds)	(1,000 pounds)
Pecans			
United States			
2010	89,884	203,856	97,443
2011	49,355	220,345	101,799
2012			
Pistachios			
California			
2010	378,000	144,000	69,000
2011	341,000	103,000	51,500
2012	464,000	87,000	43,500

¹ In-shell basis.

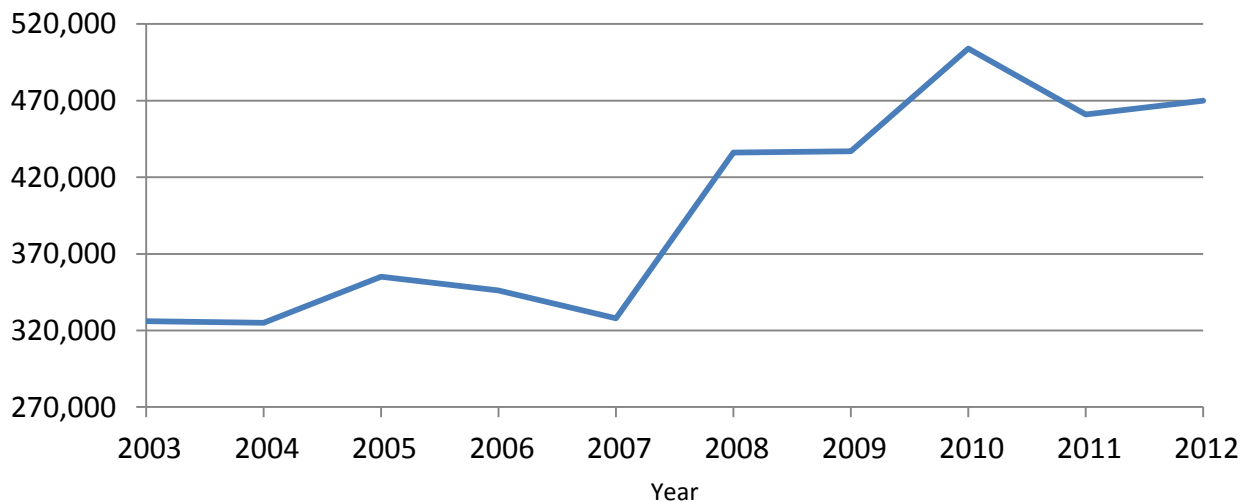
California Almonds Utilized Production United States: 2003-2012

(000) Pounds
Shelled basis



California English Walnuts Utilized Production United States: 2003-2012

Tons
In-shell basis



Pecan Production, Price, and Value by Variety – States and United States: 2010-2012

Variety and State	Utilized production (In-shell basis)			Price per pound			Value of utilized production		
	2010 (1,000 pounds)	2011 (1,000 pounds)	2012 (1,000 pounds)	2010 (dollars)	2011 (dollars)	2012 (dollars)	2010 (1,000 dollars)	2011 (1,000 dollars)	2012 (1,000 dollars)
Improved varieties ¹									
Alabama	4,500	13,000	3,400	1.750	1.830	1.400	7,875	23,790	4,760
Arizona	22,000	18,500	20,000	2.800	2.800	1.600	61,600	51,800	32,000
Arkansas	780	1,300	1,600	2.000	1.980	1.540	1,560	2,574	2,464
California	5,700	3,700	4,800	2.540	2.670	1.580	14,478	9,879	7,584
Florida	1,200	1,400	1,100	1.900	1.850	1.100	2,280	2,590	1,210
Georgia	70,000	92,000	96,000	2.200	2.650	1.940	154,000	243,800	186,240
Louisiana	3,500	2,500	5,000	2.000	2.200	1.300	7,000	5,500	6,500
Mississippi	1,400	3,400	2,000	1.600	1.800	1.250	2,240	6,120	2,500
Missouri	180	190	200	2.200	1.900	1.450	396	361	290
New Mexico	66,000	61,000	65,000	2.830	2.670	1.700	186,780	162,870	110,500
Oklahoma	6,000	2,000	5,000	2.100	2.400	1.550	12,600	4,800	7,750
South Carolina	1,300	2,040	1,500	1.800	2.000	1.750	2,340	4,080	2,625
Texas	50,000	26,000	42,000	2.500	2.650	1.520	125,000	68,900	63,840
United States	232,560	227,030	247,600	2.490	2.590	1.730	578,149	587,064	428,263
Native and seedling									
Alabama	500	6,000	600	1.180	1.310	0.830	590	7,860	498
Arkansas	320	1,200	600	1.620	1.580	0.850	518	1,896	510
Florida	300	2,600	900	1.100	1.400	0.750	330	3,640	675
Georgia	5,000	10,000	4,000	1.700	2.080	1.220	8,500	20,800	4,880
Kansas	3,000	1,500	3,000	1.750	1.800	1.350	5,250	2,700	4,050
Louisiana	16,500	7,500	10,000	1.350	1.400	0.700	22,275	10,500	7,000
Mississippi	700	1,600	500	1.100	1.400	0.850	770	2,240	425
Missouri	660	1,310	2,300	1.600	1.750	0.950	1,056	2,293	2,185
Oklahoma	14,000	4,000	20,000	1.650	1.650	0.850	23,100	6,600	17,000
South Carolina	200	960	300	1.450	1.350	1.250	290	1,296	375
Texas	20,000	6,000	13,000	1.700	1.500	0.840	34,000	9,000	10,920
United States	61,180	42,670	55,200	1.580	1.610	0.879	96,679	68,825	48,518
All pecans									
Alabama	5,000	19,000	4,000	1.690	1.670	1.310	8,465	31,650	5,258
Arizona	22,000	18,500	20,000	2.800	2.800	1.600	61,600	51,800	32,000
Arkansas	1,100	2,500	2,200	1.890	1.790	1.350	2,078	4,470	2,974
California	5,700	3,700	4,800	2.540	2.670	1.580	14,478	9,879	7,584
Florida	1,500	4,000	2,000	1.740	1.560	0.943	2,610	6,230	1,885
Georgia	75,000	102,000	100,000	2.170	2.590	1.910	162,500	264,600	191,120
Kansas	3,000	1,500	3,000	1.750	1.800	1.350	5,250	2,700	4,050
Louisiana	20,000	10,000	15,000	1.460	1.600	0.900	29,275	16,000	13,500
Mississippi	2,100	5,000	2,500	1.430	1.670	1.170	3,010	8,360	2,925
Missouri	840	1,500	2,500	1.730	1.770	0.990	1,452	2,654	2,475
New Mexico	66,000	61,000	65,000	2.830	2.670	1.700	186,780	162,870	110,500
Oklahoma	20,000	6,000	25,000	1.790	1.900	0.990	35,700	11,400	24,750
South Carolina	1,500	3,000	1,800	1.750	1.790	1.670	2,630	5,376	3,000
Texas	70,000	32,000	55,000	2.270	2.430	1.360	159,000	77,900	74,760
United States	293,740	269,700	302,800	2.300	2.430	1.570	674,828	655,889	476,781

¹ Budded, grafted, or topworked varieties.

Crop Comments

Apples: Utilized apple production for 2012 is estimated at 8.99 billion pounds, down 3 percent from 2011. New York's apple growers reported that their crop was negatively impacted by early warm weather in March which prompted budding, followed by freezing in April and drought conditions in June and July. The Michigan apple crop potential was drastically diminished from a series of severe frosts in April. This followed abnormally high temperatures in March that had pushed budding far ahead of normal. As of mid-December, the harvest was two to three weeks ahead of normal due to the hot summer and small crop. Washington apple growers reported good growing conditions, without losses from freezes or frost, which allowed for more picking days and more fruit being harvested this year.

Grapes: Utilized grape production for 2012 is estimated at 7.34 million tons, down 1 percent from 2011. The California crop, which accounts for 91 percent of the 2012 United States utilized grape production, is down slightly from the previous year. The most notable decreases in utilized production were in Michigan, New York, and Pennsylvania where the crop experienced unusually warm temperatures in March followed by a devastating freeze in April. In New York, the utilized production was the lowest since 1977.

The grape crop in California developed well in 2012 due to the warm and dry weather. Yields for wine grapes were higher than last year's frost damaged crop in most of the growing region.

Peaches: Utilized peach production for 2012 is estimated at 965,420 tons, down 7 percent from the previous year. The California crop, accounting for 74 percent of the United States utilized peach production, is down 8 percent from 2011.

In California, there were some reports of hail damage during the spring, which resulted in significant crop loss. An adequate number of chilling hours benefited the Freestone crop. There were some reports of hail damage during the spring, which resulted in significant crop loss.

Higher labor costs and a lack of workers to thin the California Clingstone crop were a big concern for growers as the crop required a great deal of thinning. This year's crop deliveries represented the third smallest crop in fifty years. The largest yield decrease occurred in the early varieties, as yields improved as the harvest progressed. Sizes were reported to be small, resulting in lower production.

In Georgia, drought conditions during most of the growing season lowered peach production from a year ago. Many producers reported a lack of chill hours and hail storms negatively impacted this season's crop.

In South Carolina, harvest started about two weeks early. A mild winter produced inadequate chill hours and subsequent lower yields from 2011. Scattered hail storms were also reported during the season which did some damage, especially for "Upstate" producers. Fruit was of good quality, but slightly undersized.

In New Jersey, growing conditions were ideal throughout the spring. Tree bloom and fruit sets were earlier than usual. As a result, producers began harvesting early and mid-season varieties in June. Peach sizes and quality rated good to excellent. In Michigan, hot weather in March caused peaches to blossom early. In April, several frosts killed most blossoms across the state, resulting in about 60 percent of peach growers without a crop.

Pears: Utilized pear production for 2012 is estimated at 858,130 tons, down 11 percent from the revised 2011 estimate. Five of the six estimating States (California, Michigan, New York, Pennsylvania, and Washington) showed decreased production from last season.

Washington producers experienced mild spring weather conditions with no losses from frost. Several producers noted reduced production of D'Anjou and Bosc varieties due to poor weather during pollination. Reports of hail and wind damage from June and July storms were common. Production further declined due to fire blight.

In California rain and cool weather during the pollination period affected yields in some areas. Harvest began in July and continued into October. The quality of the crop was reported to be good.

Nearly all of Michigan's crop was destroyed by April freezes. Only 15 percent of growers reported having a crop. In New York, frost was a major issue, which negatively impacted this year's crop. March was unusually warm, causing early budding, and was followed by several frosts in April. Many producers reported complete or near complete losses due to these weather conditions. In Pennsylvania, the crop was significantly impacted by frost and pests. Adverse weather impacting the pear crop was widespread with few orchards not suffering.

In Oregon, grower comments varied from a down year to fantastic one. Growers reported good pollination weather, decent bloom weather, and very good growing conditions. Fire blight issues and some frost damage were reported.

Tree nuts: Utilized tree nut production for crop year 2012 is 2.68 million tons (in-shell basis), 4 percent above the previous year. Almond utilized crop production, at 1.73 million tons is down 2 percent from 2011. Walnut utilized production in 2012, at 470,000 tons, is up 2 percent from the previous year. Pistachio utilized production, at 275,500 tons is 24 percent more than 2011. Pecan utilized production in 2012 is estimated at 151,400 tons, a 12 percent increase from 2011. The hazelnut crop, at 34,700 tons, is 1 percent below the previous year. Macadamia nut production is 22,000 tons, down 10 percent from 2011.

Value of United States utilized nut production in 2012 is 7.40 billion dollars, up 6 percent from the 2011 value. The 2012 utilized almond crop is valued at 4.35 billion dollars, 8 percent more than the previous year. Pistachio utilized crop value for 2012, at 1.11 billion dollars, is up 27 percent from previous year. The value of the 2012 utilized pecan crop decreased 27 percent to 477 million dollars. Hazelnut utilized crop value, at 63.4 million dollars, is 29 percent below last year. The 2012 utilized macadamia nut crop is valued at 35.2 million dollars, down 8 percent from 2011.

Definition of Terms

Bearing acreage: An orchard, grove, or vineyard is considered to be of bearing age when it can normally be expected to produce a commercially significant quantity of the crop. Bearing age is a function of many factors including variety, rootstock, year planted, etc.

Apple crop: Apple production estimates are published only for commercial orchards, according to the laws governing crop production reports (7 U.S.C 411b). Commercial orchards, under these laws, are defined as orchards of 100 or more bearing trees.

Harvested not sold: Fruit of marketable quality that was picked but not sold for various reasons up to 2 percent of total production is considered normal seasonal loss and is excluded from total production. Reported values are above and beyond these normal seasonal losses.

Total production: The quantity of a crop actually harvested plus quantities which would have been acceptable for fresh market or processing but were not harvested because of economic or natural reasons are included in production estimates.

Unutilized production: The difference between total and utilized production, which is marketable fruit not harvested for economic or natural reasons and harvested fruit not sold or utilized, is unutilized production.

Unharvested production: Marketable fruit produced, but not harvested for various reasons, is unharvested production. Unharvested amounts up to 2 percent of total production are considered normal seasonal losses and are excluded from total production. Published estimates of unharvested production represent quantities above and beyond these normal seasonal losses.

Utilization: These estimates refer to the first utilization, not necessarily the final utilization of a crop. For example, frozen fruit includes some fruit that may be later used for making preserves. Grade-outs for fresh market fruit which are processed are included in the processing quantity. Fruit graded-out from canning or freezing and utilized for juice is included with juice.

Utilized production: The amount of a crop sold plus the quantities used at home or held in storage represents utilized production.

Yield per acre: Unless otherwise stated, yield per acre is based on total production.

Price and Value Definitions

Price: Except where specified as monthly, prices in this report represent the Market Year Average (MYA) price. For a crop sold for both fresh market and processing, the total crop MYA is a weighted average of the fresh and processing prices.

Prices for fresh fruit represent the average price producers receive at the point of first sale. This is commonly referred to as the average price as sold. The exception is fresh fruit sales in California, Michigan (apples only), New York (apples only), and Washington which are equivalent returns at packinghouse door.

Prices for fruit sold for processing are equivalent returns for fruit delivered to the processing plant door except for cranberries, California olives, and freestone peaches, which are priced at the first delivery point.

Value: Crop value estimates in this report cover the marketing season or crop year and should not be confused with cash receipts which are based on a calendar year.

State MYA Price and Value Computations

Fresh Market Value

Fresh Market MYA * Fresh Market Utilization

Processed Value

Processed MYA * Processed Utilization

"All" Value

Fresh Market Value + Processed Value

"All" MYA

"All" Value / "All" Utilization

For commodities with components not identified by market channel, substitute breakdown name for fresh market/processed and use the same procedure.

United States MYA Price and Value Computations

Fresh Market MYA

$$\frac{\sum(\text{Fresh Market Value For All States})}{\sum(\text{Fresh Market Utilization For All States})}$$

Processed MYA

$$\frac{\sum(\text{Processed Value For All States})}{\sum(\text{Processed Utilization For All States})}$$

"All" MYA

$$\frac{\sum(\text{Value For All States})}{\sum(\text{Utilization For All States})}$$

Marketing Seasons for Noncitrus Fruits

Apples: August to June for Eastern States, excluding Georgia, New Jersey, and South Carolina; July to May for Central States, excluding Iowa, Kentucky, Minnesota, Missouri, Tennessee, and Wisconsin; August to June for Western States, excluding Arizona; August to December for all other states.

Apricots: May 15 to July 5 for California; June 10 to August 15 for Utah; June 20 to August 1 for Washington.

Avocados: November 1 to October for California; June 20 to March 1 for Florida; January 1 to December 31 for Hawaii.

Bananas: January 1 to December 31

Cherries, sweet: April 25 to June 15 for California; July 20 to August 20 for Montana; June to July for all other States.

Cherries, tart: June 25 to August 15

Cranberries: September 15 to January 1

Dates: August 15 to March 15

Figs: June 5 to October 30

Grapes: May 25 to July for Table (California); June 5 to July 31 for Raisin (California); August 15 to December 15 for Wine (California and Washington); September 15 to November 1 for Juice (Washington); July to October for all other States.

Guavas: January 1 to December 31

Kiwifruit: October 1 to May 31

Nectarines: April 30 to October 15

Olives: August 1 to July 31 for Fresh, Canned, and other processing; December 1 to November 30 for Crushed for Oil

Papayas: January 1 to December 31

Peaches: July 10 to September 15 for Clingstone (California); April 20 to October 10 for Freestone (California); May to August for Georgia and South Carolina; July to September for all other States.

Pears: July to December for Bartlett (California, Oregon, and Washington); July to June for other (California, Oregon, and Washington); August to November for all other States.

Plums: May 15 to October 20 for California

Prunes, dried: August 20 to April 15 for California

Prunes and plums: August 15 to October 15 for Fresh and Canning (Idaho, Michigan, Oregon, and Washington)

Marketing Seasons for Tree Nuts

Almonds: August 5 to November 15

Hazelnuts: October 1 to November 30

Macadamia nuts: July 1 to June 30

Pecans: October 1 to March 31

Pistachios: September 30 to January 30

Walnuts: September 15 to November 10

For detail by States, see Agricultural Handbook No. 729, *Fruits and Tree Nuts: Blooming, Harvesting, and Marketing Dates*, December 2006.

Statistical Methodology

Survey Procedures: Non-probability monthly grower surveys are used to collect crop condition, yield, acreage, and production data. These fruit inquiries are generally mailed surveys during the growing season. Telephone follow-up of mail survey non-respondents is used to ensure adequate coverage. Special grower disposition surveys are conducted at the end of each season to provide additional details about the crop. They provide indications of the quantity used on farms, the quantity sold directly to consumers, unharvested production, and production not sold or utilized. All fruit and nut processors or shellers are also surveyed annually to determine quantity handle, utilization, and the origin of the commodity.

Estimating Procedures: Information obtained from the non-citrus fruits and nuts grower surveys along with federal administrative data is used to establish estimates of bearing acres, yield, total production, utilized production, price, and value. These estimates are reviewed for errors, reasonableness, and consistency with historical estimates.

Revision Policy: Final survey indications and check data for most non-citrus fruits and nuts are available prior to submitting utilization estimates. As a result revisions are allowed for a few crops in the spring. End-of-season estimates of production are made following harvest and are subject to revision the following year based on a thorough review of all available data.

Reliability: To assist users in evaluating the reliability of the January noncitrus fruit total production estimates, the "Root Mean Square Error," a statistical measure based on past performance, is computed. The deviation between the first January total production estimate and the final estimate is expressed as a percentage of the final estimate. The average of squared percentage deviations for the latest 20-year period is computed. The square root of the average becomes statistically the "Root Mean Square Error." Probability statements can be made concerning expected differences in the current estimate relative to the final end-of-season estimate, assuming that factors affecting this year's estimate are not different from those influencing recent years. For example, the "Root Mean Square Error" for the January apple total production estimate is 2.8 percent. This means that chances are 2 out of 3 that the current production estimate will not be above or below the final estimate by more than 2.8 percent. Chances are 9 out of 10 (90 percent confidence level) that the difference will not exceed 4.8 percent.

The following table is included with a 20-year record for selected crops of the differences between the first January total production estimate and the final estimate. Using apples again as an example, changes between the first January estimate and the final estimate during the last 20 years have averaged 108.9 thousand tons, ranging from 2.5 thousand tons to 351.4 thousand tons. The first January estimate has been below the final estimate 6 times and above 14 times. This does not imply that the January estimate this year is likely to understate or overstate the final production.

Reliability of Selected Noncitrus Fruit Estimates

Crop	Root mean square error		20-year record of differences between initial estimate and final estimate				
	Percent	90 percent confidence interval	Quantity			Years	
			Average	Smallest	Largest	Below final	Above final
			(1,000)	(1,000)	(1,000)	(number)	(number)
Apples tons	2.8	4.8	108.9	2.5	351.4	6	14
Grapes tons	3.9	6.7	197.8	8.6	838.8	17	3
Peaches tons	1.3	2.2	12.0	(Z)	29.9	9	9
Pears tons	3.2	5.5	22.9	1.0	63.9	15	5

(Z) Less than half of the unit shown.

Information Contacts

Listed below are the commodity statisticians in the Crops Branch of the National Agricultural Statistics Service to contact for additional information. E-mail inquiries may be sent to nass@nass.usda.gov

Lance Honig, Chief, Crops Branch.....	(202) 720-2127
Jorge Garcia-Pratts, Head, Fruits, Vegetables and Special Crops Section.....	(202) 720-2127
Debbie Flippin – Fresh and Processing Vegetables, Onions, Strawberries	(202) 720-2157
Fred Granja – Apples, Apricots, Cherries, Plums, Prunes, Tobacco	(202) 720-4288
Chris Hawthorn – Citrus, Coffee, Grapes, Sugar Crops, Tropical Fruits	(202) 720-5412
Dave Losh – Hops.....	(360) 709-2400
Dan Norris – Austrian Winter Peas, Dry Edible Peas, Lentils, Mint, Mushrooms, Peaches, Pears, Wrinkled Seed Peas, Dry Beans	(202) 720-3250
Daphne Schauber – Berries, Cranberries, Potatoes, Sweet Potatoes	(202) 720-4285
Erika White – Floriculture, Maple Syrup, Nursery, Tree Nuts	(202) 720-4215

Access to NASS Reports

For your convenience, you may access NASS reports and products the following ways:

- All reports are available electronically, at no cost, on the NASS web site: <http://www.nass.usda.gov>
- Both national and state specific reports are available via a free e-mail subscription. To set-up this free subscription, visit <http://www.nass.usda.gov> and in the “Follow NASS” box under “Receive reports by Email,” click on “National” or “State” to select the reports you would like to receive.

For more information on NASS surveys and reports, call the NASS Agricultural Statistics Hotline at (800) 727-9540, 7:30 a.m. to 4:00 p.m. ET, or e-mail: nass@nass.usda.gov.

The United States Department of Agriculture (USDA) prohibits discrimination in all its programs and activities on the basis of race, color, national origin, age, disability, and where applicable, sex, marital status, familial status, parental status, religion, sexual orientation, political beliefs, genetic information, reprisal, or because all or a part of an individual's income is derived from any public assistance program. (Not all prohibited bases apply to all programs.) Persons with disabilities who require alternative means for communication of program information (Braille, large print, audiotape, etc.) should contact USDA's TARGET Center at (202) 720-2600 (voice and TDD).

To file a complaint of discrimination, write to USDA, Assistant Secretary for Civil Rights, Office of the Assistant Secretary for Civil Rights, 1400 Independence Avenue, S.W., Stop 9410, Washington, DC 20250-9410, or call toll-free at (866) 632-9992 (English) or (800) 877-8339 (TDD) or (866) 377-8642 (English Federal-relay) or (800) 845-6136 (Spanish Federal-relay). USDA is an equal opportunity provider and employer.