



# Sheep and Goats

ISSN: 1949-1611

---

Released February 1, 2013, by the National Agricultural Statistics Service (NASS), Agricultural Statistics Board, United States Department of Agriculture (USDA).

## Total Sheep and Lamb Inventory Down 1 Percent

**All sheep and lamb inventory** in the United States on January 1, 2013, totaled 5.34 million head, down 1 percent from 2012. Breeding sheep inventory decreased to 3.98 million head on January 1, 2013, down 1 percent from 4.0 million head on January 1, 2012. Ewes one year old and older, at 3.14 million head, were 1 percent below last year. Market sheep and lambs on January 1, 2013, totaled 1.36 million head, down 1 percent from January 1, 2012. Market lambs comprised 94 percent of the total market inventory. Twenty-three percent were lambs under 65 pounds, 12 percent were 65 - 84 pounds, 22 percent were 85 - 105 pounds, and 37 percent were over 105 pounds. Market sheep comprised the remaining 6 percent of total market inventory.

**The 2012 lamb crop** of 3.46 million head, was down 2 percent from 2011. The 2012 lambing rate was 109 lambs per 100 ewes one year old and older on January 1, 2012, unchanged from 2011.

**Shorn wool production** in the United States during 2012 was 28.5 million pounds, down 3 percent from 2011. Sheep and lambs shorn totaled 3.93 million head, also down 2 percent from 2011. The average price paid for wool sold in 2012 was \$1.53 per pound for a total value of 43.6 million dollars, down 11 percent from 48.9 million dollars in 2011.

**Sheep death loss** during 2012 totaled 229 thousand head, a decrease of 5 percent from 2011. Lamb death loss decreased 4 percent from 380 thousand head in 2011 to 365 thousand head in 2012.

## Total Goat and Kid Inventory Down 2 Percent

**All goat inventory** in the United States on January 1, 2013, totaled 2.81 million head, down 2 percent from 2012. Breeding goat inventory totaled 2.32 million head, down 2 percent from 2012. Does one year old and older, at 1.73 million head, were 2 percent below last year's number. Market goats and kids totaled 490 thousand head, up one percent from a year ago.

**Kid crop** for 2012 totaled 1.79 million head for all goats, down 5 percent from 2011.

**Meat and all other goats** totaled 2.32 million head on January 1, 2013, down 2 percent from 2012. Milk goat inventory was 360 thousand head, unchanged from January 1, 2012, while Angora goats were down 7 percent, totaling 136 thousand head.

**Mohair production** in the United States during 2012 was 770 thousand pounds. Goats and kids clipped totaled 136 thousand head. Average weight per clip was 5.7 pounds. Mohair price was \$3.89 per pound with a value of 2.99 million dollars.

**This page intentionally left blank.**

## Contents

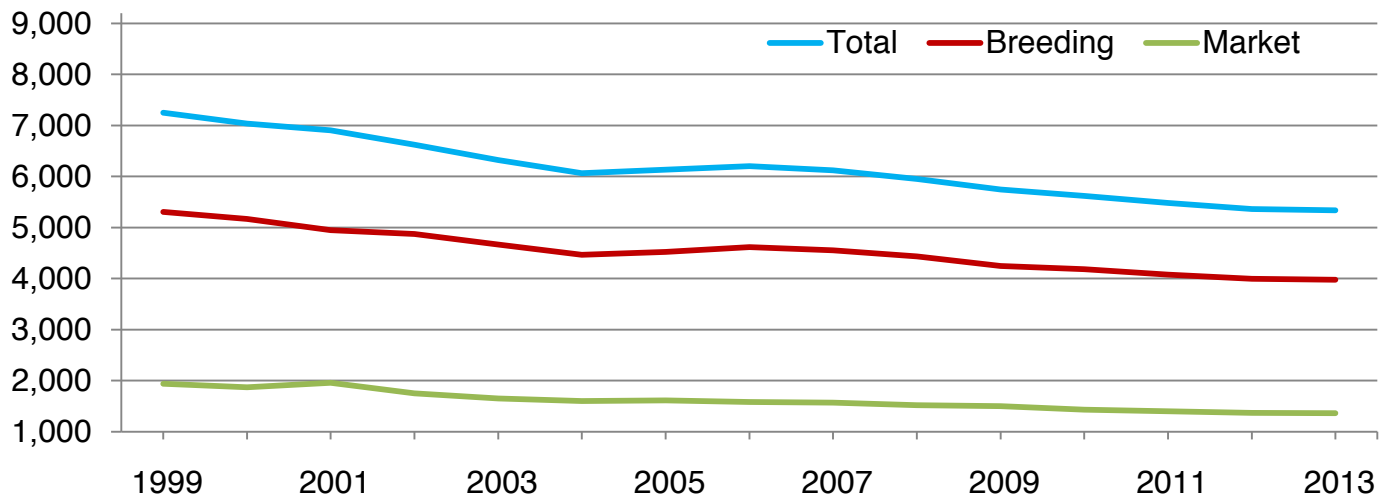
Sheep and Lamb Inventory by Class – United States: January 1, 2012 and 2013 .....	4
Sheep and Lamb Inventory – United States: January 1 .....	4
Wool Production, Price, and Value – United States: 2011 and 2012.....	4
Sheep and Lamb Inventory by Class – States and United States: January 1, 2012 and 2013.....	5
Breeding Sheep and Lamb Inventory by Class – States and United States: January 1, 2012 and 2013 .....	6
Lamb Crop – States and United States: 2011 and 2012.....	7
Market Sheep and Lamb Inventory by Weight Group – States and United States: January 1, 2012.....	8
Market Sheep and Lamb Inventory by Weight Group – States and United States: January 1, 2013.....	9
Sheep and Lamb Farm Slaughter and Death Loss – States and United States: 2011 and 2012.....	10
Wool Production – States and United States: 2011 and 2012.....	11
Wool Price and Value – States and United States: 2011 and 2012.....	12
Goat Inventory by Class – United States: January 1, 2012 and 2013 .....	13
Goat Inventory – United States: January 1 .....	13
Angora Goat Inventory by Class – United States: January 1, 2012 and 2013 .....	14
Milk Goat Inventory by Class – United States: January 1, 2012 and 2013 .....	14
Meat and Other Goat Inventory by Class – United States: January 1, 2012 and 2013 .....	14
Angora Goat Inventory – States and United States: January 1, 2012 and 2013.....	15
Mohair Production, Price, and Value – States and United States: 2011 and 2012 .....	15
Milk Goat Inventory – States and United States: January 1, 2012 and 2013.....	16
Meat and Other Goat Inventory – States and United States: January 1, 2012 and 2013 .....	17
Statistical Methodology .....	18
Reliability of January 1 Sheep and Lamb Estimates.....	19
Information Contacts .....	19

## Sheep and Lamb Inventory by Class – United States: January 1, 2012 and 2013

Class	2012	2013	2013 as percent of 2012
	(1,000 head)	(1,000 head)	(percent)
All sheep and lambs .....	5,365.0	5,335.0	99
Breeding sheep and lambs .....	3,995.0	3,975.0	99
Replacement lambs under one year old .....	660.0	660.0	100
Ewes - one year old and older .....	3,165.0	3,140.0	99
Rams - one year old and older .....	170.0	175.0	103
Market .....	1,370.0	1,360.0	99

## Sheep and Lamb Inventory – United States: January 1

Thousand head



## Wool Production, Price, and Value – United States: 2011 and 2012

Year	Sheep shorn <sup>1</sup>	Weight per fleece	Shorn wool production	Price per pound	Value
	(1,000 head)	(pounds)	(1,000 pounds)	(dollars)	(1,000 dollars)
2011 .....	4,030	7.3	29,290	1.67	48,925
2012 .....	3,930	7.3	28,500	1.53	43,626

<sup>1</sup> Includes shearing at commercial feeding yards.

## Sheep and Lamb Inventory by Class – States and United States: January 1, 2012 and 2013

State	All sheep and lambs			Total breeding		Total market	
	2012	2013	2013 as percent of 2012	2012	2013	2012	2013
	(1,000 head)	(1,000 head)	(percent)	(1,000 head)	(1,000 head)	(1,000 head)	(1,000 head)
Arizona .....	140.0	140.0	100	97.0	105.0	43.0	35.0
California .....	570.0	570.0	100	320.0	320.0	250.0	250.0
Colorado .....	460.0	435.0	95	190.0	195.0	270.0	240.0
Idaho .....	240.0	235.0	98	199.0	185.0	41.0	50.0
Illinois .....	57.0	53.0	93	48.0	45.0	9.0	8.0
Indiana .....	55.0	55.0	100	48.0	48.0	7.0	7.0
Iowa .....	195.0	175.0	90	143.0	128.0	52.0	47.0
Kansas .....	70.0	65.0	93	44.0	42.0	26.0	23.0
Kentucky .....	40.0	43.0	108	34.0	35.0	6.0	8.0
Michigan .....	79.0	82.0	104	58.0	59.0	21.0	23.0
Minnesota .....	150.0	135.0	90	106.0	99.0	44.0	36.0
Missouri .....	83.0	75.0	90	73.0	66.0	10.0	9.0
Montana .....	225.0	235.0	104	210.0	210.0	15.0	25.0
Nebraska .....	77.0	80.0	104	62.0	66.0	15.0	14.0
Nevada .....	70.0	73.0	104	63.0	63.0	7.0	10.0
New England <sup>1</sup> .....	45.0	44.0	98	38.0	37.0	7.0	7.0
New Mexico .....	100.0	100.0	100	89.0	86.0	11.0	14.0
New York .....	62.0	70.0	113	51.0	57.0	11.0	13.0
North Carolina .....	26.0	26.0	100	21.0	21.0	5.0	5.0
North Dakota .....	73.0	74.0	101	57.0	55.0	16.0	19.0
Ohio .....	126.0	121.0	96	102.0	99.0	24.0	22.0
Oklahoma .....	70.0	75.0	107	56.0	59.0	14.0	16.0
Oregon .....	200.0	210.0	105	140.0	140.0	60.0	70.0
Pennsylvania .....	89.0	86.0	97	75.0	74.0	14.0	12.0
South Dakota .....	285.0	275.0	96	225.0	220.0	60.0	55.0
Tennessee .....	35.0	33.0	94	28.0	28.0	7.0	5.0
Texas .....	670.0	700.0	104	540.0	560.0	130.0	140.0
Utah .....	305.0	295.0	97	280.0	275.0	25.0	20.0
Virginia .....	84.0	87.0	104	74.0	70.0	10.0	17.0
Washington .....	52.0	54.0	104	42.0	43.0	10.0	11.0
West Virginia .....	33.0	30.0	91	28.0	27.0	5.0	3.0
Wisconsin .....	84.0	84.0	100	69.0	68.0	15.0	16.0
Wyoming .....	370.0	375.0	101	270.0	275.0	100.0	100.0
Other States <sup>2</sup> .....	145.0	145.0	100	115.0	115.0	30.0	30.0
United States .....	5,365.0	5,335.0	99	3,995.0	3,975.0	1,370.0	1,360.0

<sup>1</sup> New England includes Connecticut, Maine, Massachusetts, New Hampshire, Rhode Island, and Vermont.

<sup>2</sup> Unpublished states.

**Breeding Sheep and Lamb Inventory by Class – States and United States: January 1, 2012 and 2013**

State	Breeding sheep				Replacement lambs		Total breeding sheep and lambs	
	Ewes		Rams		2012	2013	2012	2013
	2012	2013	2012	2013				
	(1,000 head)	(1,000 head)	(1,000 head)	(1,000 head)	(1,000 head)	(1,000 head)	(1,000 head)	(1,000 head)
Arizona .....	71.0	75.0	6.0	8.0	20.0	22.0	97.0	105.0
California .....	265.0	265.0	10.0	10.0	45.0	45.0	320.0	320.0
Colorado .....	154.0	162.0	5.0	6.0	31.0	27.0	190.0	195.0
Idaho .....	166.0	150.0	5.0	5.0	28.0	30.0	199.0	185.0
Illinois .....	37.0	35.0	3.0	2.0	8.0	8.0	48.0	45.0
Indiana .....	37.0	37.0	3.0	3.0	8.0	8.0	48.0	48.0
Iowa .....	115.0	100.0	5.0	5.0	23.0	23.0	143.0	128.0
Kansas .....	34.0	33.0	2.0	2.0	8.0	7.0	44.0	42.0
Kentucky .....	27.0	27.0	2.0	2.0	5.0	6.0	34.0	35.0
Michigan .....	43.0	43.0	3.0	3.0	12.0	13.0	58.0	59.0
Minnesota .....	83.0	79.0	4.0	4.0	19.0	16.0	106.0	99.0
Missouri .....	58.0	53.0	3.0	3.0	12.0	10.0	73.0	66.0
Montana .....	165.0	155.0	6.0	6.0	39.0	49.0	210.0	210.0
Nebraska .....	51.0	53.0	3.0	3.0	8.0	10.0	62.0	66.0
Nevada .....	49.0	50.0	2.0	2.0	12.0	11.0	63.0	63.0
New England <sup>1</sup> .....	29.0	29.0	2.0	2.0	7.0	6.0	38.0	37.0
New Mexico .....	72.0	66.0	4.0	4.0	13.0	16.0	89.0	86.0
New York .....	38.0	42.0	3.0	3.0	10.0	12.0	51.0	57.0
North Carolina .....	15.0	15.0	2.0	2.0	4.0	4.0	21.0	21.0
North Dakota .....	46.0	44.0	2.0	2.0	9.0	9.0	57.0	55.0
Ohio .....	78.0	77.0	6.0	6.0	18.0	16.0	102.0	99.0
Oklahoma .....	42.0	44.0	4.0	4.0	10.0	11.0	56.0	59.0
Oregon .....	109.0	110.0	6.0	6.0	25.0	24.0	140.0	140.0
Pennsylvania .....	56.0	58.0	6.0	6.0	13.0	10.0	75.0	74.0
South Dakota .....	185.0	180.0	7.0	7.0	33.0	33.0	225.0	220.0
Tennessee .....	21.0	21.0	2.0	2.0	5.0	5.0	28.0	28.0
Texas .....	425.0	440.0	30.0	30.0	85.0	90.0	540.0	560.0
Utah .....	230.0	225.0	9.0	9.0	41.0	41.0	280.0	275.0
Virginia .....	57.0	56.0	3.0	3.0	14.0	11.0	74.0	70.0
Washington .....	33.0	33.0	2.0	3.0	7.0	7.0	42.0	43.0
West Virginia .....	23.0	22.0	1.0	1.0	4.0	4.0	28.0	27.0
Wisconsin .....	54.0	53.0	3.0	3.0	12.0	12.0	69.0	68.0
Wyoming .....	215.0	225.0	7.0	8.0	48.0	42.0	270.0	275.0
Other States <sup>2</sup> .....	82.0	83.0	9.0	10.0	24.0	22.0	115.0	115.0
United States .....	3,165.0	3,140.0	170.0	175.0	660.0	660.0	3,995.0	3,975.0

<sup>1</sup> New England includes Connecticut, Maine, Massachusetts, New Hampshire, Rhode Island, and Vermont.

<sup>2</sup> Unpublished states.

## Lamb Crop – States and United States: 2011 and 2012

State	Ewes 1 year and older January 1		Lambs per 100 ewes January 1		Lamb crop <sup>1</sup>		
	2011	2012	2011	2012	2011	2012	2012 as percent of 2011
	(1,000 head)	(1,000 head)	(number)	(number)	(1,000 head)	(1,000 head)	(percent)
Arizona .....	75.0	71.0	64	63	48.0	45.0	94
California .....	273.0	265.0	92	91	250.0	240.0	96
Colorado .....	142.0	154.0	134	114	190.0	175.0	92
Idaho .....	151.0	166.0	139	123	210.0	205.0	98
Illinois .....	36.0	37.0	136	127	49.0	47.0	96
Indiana .....	34.0	37.0	138	127	47.0	47.0	100
Iowa .....	104.0	115.0	149	130	155.0	150.0	97
Kansas .....	33.0	34.0	142	126	47.0	43.0	91
Kentucky .....	22.0	27.0	136	119	30.0	32.0	107
Michigan .....	44.0	43.0	145	151	64.0	65.0	102
Minnesota .....	77.0	83.0	175	163	135.0	135.0	100
Missouri .....	57.0	58.0	126	117	72.0	68.0	94
Montana .....	170.0	165.0	121	127	205.0	210.0	102
Nebraska .....	46.0	51.0	152	143	70.0	73.0	104
Nevada .....	46.0	49.0	102	98	47.0	48.0	102
New England <sup>2</sup> .....	32.0	29.0	106	110	34.0	32.0	94
New Mexico .....	75.0	72.0	67	69	50.0	50.0	100
New York .....	43.0	38.0	100	118	43.0	45.0	105
North Carolina .....	16.0	15.0	106	100	17.0	15.0	88
North Dakota .....	50.0	46.0	126	130	63.0	60.0	95
Ohio .....	81.0	78.0	123	124	100.0	97.0	97
Oklahoma .....	45.0	42.0	102	117	46.0	49.0	107
Oregon .....	118.0	109.0	114	128	135.0	140.0	104
Pennsylvania .....	62.0	56.0	103	113	64.0	63.0	98
South Dakota .....	173.0	185.0	136	124	235.0	230.0	98
Tennessee .....	22.0	21.0	118	114	26.0	24.0	92
Texas .....	515.0	425.0	66	73	340.0	310.0	91
Utah .....	210.0	230.0	112	102	235.0	235.0	100
Virginia .....	55.0	57.0	109	107	60.0	61.0	102
Washington .....	36.0	33.0	131	124	47.0	41.0	87
West Virginia .....	24.0	23.0	129	126	31.0	29.0	94
Wisconsin .....	59.0	54.0	119	131	70.0	71.0	101
Wyoming .....	220.0	215.0	100	112	220.0	240.0	109
Other States <sup>3</sup> .....	79.0	82.0	95	98	75.0	80.0	107
United States .....	3,225.0	3,165.0	109	109	3,510.0	3,455.0	98

<sup>1</sup> Lamb crop is defined as lambs born in the Eastern States and lambs docked or branded in the Western States.

<sup>2</sup> New England includes Connecticut, Maine, Massachusetts, New Hampshire, Rhode Island, and Vermont.

<sup>3</sup> Unpublished states.

## Market Sheep and Lamb Inventory by Weight Group – States and United States: January 1, 2012

State	Market lambs					Market sheep	Total market sheep and lambs
	Under 65 pounds	65 - 84 pounds	85 - 105 pounds	Over 105 pounds	Total		
	(1,000 head)	(1,000 head)	(1,000 head)	(1,000 head)	(1,000 head)	(1,000 head)	(1,000 head)
Arizona .....	10.0	3.0	9.0	17.0	39.0	4.0	43.0
California .....	105.0	20.0	15.0	105.0	245.0	5.0	250.0
Colorado .....	3.0	14.0	85.0	167.0	269.0	1.0	270.0
Idaho .....	2.0	2.0	8.0	27.0	39.0	2.0	41.0
Illinois .....	3.5	1.9	1.2	1.4	8.0	1.0	9.0
Indiana .....	4.0	0.6	1.0	0.4	6.0	1.0	7.0
Iowa .....	9.0	8.0	17.0	17.0	51.0	1.0	52.0
Kansas .....	11.0	3.0	2.0	6.0	22.0	4.0	26.0
Kentucky .....	2.0	1.0	1.5	0.5	5.0	1.0	6.0
Michigan .....	2.0	2.0	6.0	9.0	19.0	2.0	21.0
Minnesota .....	9.0	10.0	10.0	14.0	43.0	1.0	44.0
Missouri .....	3.0	2.5	2.0	1.5	9.0	1.0	10.0
Montana .....	2.0	3.0	7.0	2.0	14.0	1.0	15.0
Nebraska .....	2.0	2.0	5.0	5.0	14.0	1.0	15.0
Nevada .....	1.0	1.0	2.0	2.0	6.0	1.0	7.0
New England <sup>1</sup> .....	2.0	1.4	1.0	0.6	5.0	2.0	7.0
New Mexico .....	3.0	3.0	2.0	1.0	9.0	2.0	11.0
New York .....	6.0	2.0	1.0	1.0	10.0	1.0	11.0
North Carolina .....	2.5	1.0	0.4	0.1	4.0	1.0	5.0
North Dakota .....	1.0	3.0	7.0	4.0	15.0	1.0	16.0
Ohio .....	6.0	6.0	6.0	5.0	23.0	1.0	24.0
Oklahoma .....	7.0	2.0	2.0	1.0	12.0	2.0	14.0
Oregon .....	7.0	8.0	17.0	25.0	57.0	3.0	60.0
Pennsylvania .....	5.0	3.0	2.0	1.0	11.0	3.0	14.0
South Dakota .....	3.0	10.0	20.0	26.0	59.0	1.0	60.0
Tennessee .....	3.0	1.6	0.9	1.0	6.5	0.5	7.0
Texas .....	55.0	20.0	10.0	25.0	110.0	20.0	130.0
Utah .....	2.0	2.0	6.0	11.0	21.0	4.0	25.0
Virginia .....	5.0	2.0	1.0	1.0	9.0	1.0	10.0
Washington .....	2.0	2.0	2.5	1.0	7.5	2.5	10.0
West Virginia .....	2.5	1.0	1.0	0.5	5.0	-	5.0
Wisconsin .....	3.0	2.0	5.0	3.0	13.0	2.0	15.0
Wyoming .....	1.0	10.0	51.0	34.0	96.0	4.0	100.0
Other States <sup>2</sup> .....	12.5	5.0	4.5	2.0	24.0	6.0	30.0
United States .....	297.0	159.0	312.0	518.0	1,286.0	84.0	1,370.0

- Represents zero.

<sup>1</sup> New England includes Connecticut, Maine, Massachusetts, New Hampshire, Rhode Island, and Vermont.

<sup>2</sup> Unpublished states.



## Market Sheep and Lamb Inventory by Weight Group – States and United States: January 1, 2013

State	Market lambs					Market sheep	Total market sheep and lambs
	Under 65 pounds	65 - 84 pounds	85 - 105 pounds	Over 105 pounds	Total		
	(1,000 head)	(1,000 head)	(1,000 head)	(1,000 head)	(1,000 head)	(1,000 head)	(1,000 head)
Arizona .....	7.0	2.0	12.0	10.0	31.0	4.0	35.0
California .....	110.0	20.0	60.0	55.0	245.0	5.0	250.0
Colorado .....	2.0	11.0	24.0	198.0	235.0	5.0	240.0
Idaho .....	2.0	2.0	11.0	32.0	47.0	3.0	50.0
Illinois .....	3.4	1.8	0.8	1.0	7.0	1.0	8.0
Indiana .....	3.0	1.0	1.0	1.0	6.0	1.0	7.0
Iowa .....	4.0	5.0	17.0	18.0	44.0	3.0	47.0
Kansas .....	10.0	2.5	1.5	5.0	19.0	4.0	23.0
Kentucky .....	3.0	2.0	1.5	0.5	7.0	1.0	8.0
Michigan .....	2.0	4.0	7.0	8.0	21.0	2.0	23.0
Minnesota .....	7.0	7.0	8.0	13.0	35.0	1.0	36.0
Missouri .....	3.1	2.0	1.7	1.2	8.0	1.0	9.0
Montana .....	2.0	6.0	11.0	5.0	24.0	1.0	25.0
Nebraska .....	1.8	2.0	4.2	5.0	13.0	1.0	14.0
Nevada .....	-	1.0	4.0	4.0	9.0	1.0	10.0
New England <sup>1</sup> .....	2.0	1.4	1.1	0.5	5.0	2.0	7.0
New Mexico .....	2.0	3.0	4.0	3.0	12.0	2.0	14.0
New York .....	7.0	2.0	1.0	1.0	11.0	2.0	13.0
North Carolina .....	2.5	1.0	0.4	0.1	4.0	1.0	5.0
North Dakota .....	2.0	4.0	7.0	5.0	18.0	1.0	19.0
Ohio .....	5.5	5.5	5.5	4.5	21.0	1.0	22.0
Oklahoma .....	9.0	2.0	2.0	2.0	15.0	1.0	16.0
Oregon .....	10.0	7.0	20.0	30.0	67.0	3.0	70.0
Pennsylvania .....	5.5	2.3	1.5	0.7	10.0	2.0	12.0
South Dakota .....	4.0	8.0	20.0	22.0	54.0	1.0	55.0
Tennessee .....	2.7	0.5	0.5	0.8	4.5	0.5	5.0
Texas .....	80.0	25.0	10.0	15.0	130.0	10.0	140.0
Utah .....	1.0	2.0	5.0	10.0	18.0	2.0	20.0
Virginia .....	6.0	4.0	4.0	2.0	16.0	1.0	17.0
Washington .....	3.0	3.0	2.4	1.1	9.5	1.5	11.0
West Virginia .....	1.0	1.0	0.5	0.5	3.0	-	3.0
Wisconsin .....	3.0	2.0	6.0	3.0	14.0	2.0	16.0
Wyoming .....	1.0	12.0	45.0	40.0	98.0	2.0	100.0
Other States <sup>2</sup> .....	12.5	5.0	4.4	2.1	24.0	6.0	30.0
United States .....	320.0	160.0	305.0	500.0	1,285.0	75.0	1,360.0

- Represents zero.

<sup>1</sup> New England includes Connecticut, Maine, Massachusetts, New Hampshire, Rhode Island, and Vermont.

<sup>2</sup> Unpublished states.

## Sheep and Lamb Farm Slaughter and Death Loss – States and United States: 2011 and 2012

State	Farm slaughter <sup>1</sup>		Deaths			
			Sheep		Lambs	
	2011	2012	2011	2012	2011	2012
	(1,000 head)	(1,000 head)	(1,000 head)	(1,000 head)	(1,000 head)	(1,000 head)
Arizona .....	12.5	12.3	6.0	7.0	6.0	4.0
California .....	4.5	4.5	15.0	15.0	9.0	7.0
Colorado .....	2.5	2.5	16.0	14.0	20.0	20.0
Idaho .....	2.5	2.5	8.0	9.0	13.0	12.0
Illinois .....	2.0	2.0	3.0	2.0	6.0	5.5
Indiana .....	3.3	3.3	3.0	3.0	6.0	6.5
Iowa .....	1.4	1.4	9.0	8.0	20.0	18.0
Kansas .....	2.5	2.5	3.0	3.0	6.0	5.0
Kentucky .....	0.5	0.5	2.0	3.0	4.0	5.0
Michigan .....	2.0	2.0	4.0	3.0	7.0	6.0
Minnesota .....	4.0	4.0	10.0	8.0	18.0	16.0
Missouri .....	1.0	1.0	3.0	3.0	9.0	8.0
Montana .....	1.5	1.5	12.0	12.0	16.0	16.0
Nebraska .....	0.4	0.4	3.4	4.0	8.0	9.0
Nevada .....	1.0	1.0	5.0	5.0	10.0	10.0
New England <sup>2</sup> .....	2.2	2.2	1.5	1.5	2.7	3.0
New Mexico .....	5.5	5.3	8.0	7.0	4.0	4.0
New York .....	2.5	2.5	2.0	2.0	5.0	5.0
North Carolina .....	0.2	0.2	1.6	1.0	2.3	2.0
North Dakota .....	0.5	0.5	3.0	3.0	7.0	8.0
Ohio .....	3.0	3.0	7.0	7.0	12.0	12.0
Oklahoma .....	1.3	1.3	4.0	4.0	7.0	7.0
Oregon .....	4.0	4.0	7.0	8.0	7.0	7.0
Pennsylvania .....	2.0	2.0	4.0	3.0	9.0	8.0
South Dakota .....	1.5	1.5	10.0	10.0	29.0	26.0
Tennessee .....	1.3	1.3	2.0	2.0	3.5	3.5
Texas .....	2.0	2.0	40.0	36.0	64.0	58.0
Utah .....	6.0	6.0	12.0	13.0	15.0	18.0
Virginia .....	3.0	3.0	5.0	4.0	8.5	9.5
Washington .....	6.0	6.0	3.0	2.5	2.0	2.0
West Virginia .....	0.1	0.1	2.5	1.5	5.5	4.0
Wisconsin .....	1.5	1.5	4.0	4.0	9.0	8.0
Wyoming .....	2.0	2.0	11.0	10.0	13.0	14.0
Other States <sup>3</sup> .....	7.0	6.8	10.0	10.5	16.5	18.0
United States .....	93.2	92.5	240.0	229.0	380.0	365.0

<sup>1</sup> Excludes custom slaughter for farmers at commercial establishments.

<sup>2</sup> New England includes Connecticut, Maine, Massachusetts, New Hampshire, Rhode Island, and Vermont.

<sup>3</sup> Unpublished states.

## Wool Production – States and United States: 2011 and 2012

State	Sheep shorn		Weight per fleece		Production	
	2011 (1,000 head)	2012 (1,000 head)	2011 (pounds)	2012 (pounds)	2011 (1,000 pounds)	2012 (1,000 pounds)
Arizona .....	110.0	100.0	6.3	5.5	690	550
California .....	470.0	460.0	6.2	6.1	2,900	2,800
Colorado .....	370.0	350.0	7.0	7.1	2,600	2,500
Idaho .....	215.0	210.0	9.3	9.0	2,000	1,900
Illinois .....	45.0	46.0	6.8	6.7	305	310
Indiana .....	40.0	41.0	6.0	6.1	240	250
Iowa .....	190.0	175.0	5.3	5.1	1,000	900
Kansas .....	44.0	42.0	6.5	6.1	285	255
Kentucky .....	13.0	14.0	6.5	6.8	85	95
Michigan .....	66.0	70.0	6.2	5.6	410	390
Minnesota .....	140.0	130.0	6.2	6.2	870	800
Missouri .....	50.0	45.0	6.0	6.0	300	270
Montana .....	200.0	210.0	9.3	9.2	1,850	1,930
Nebraska .....	57.0	60.0	7.2	7.0	410	420
Nevada .....	54.0	56.0	9.9	10.2	535	570
New England <sup>1</sup> .....	34.0	34.0	6.9	6.8	235	230
New Mexico .....	90.0	85.0	7.8	7.6	700	650
New York .....	33.0	35.0	6.4	6.3	210	220
North Carolina .....	6.0	7.0	5.7	5.0	34	35
North Dakota .....	66.0	65.0	8.2	8.0	540	520
Ohio .....	97.0	93.0	6.0	6.0	585	560
Oklahoma .....	27.0	30.0	5.2	5.0	140	150
Oregon .....	166.0	166.0	6.6	6.6	1,100	1,100
Pennsylvania .....	52.0	55.0	6.8	6.7	355	370
South Dakota .....	260.0	255.0	7.6	7.4	1,970	1,890
Tennessee .....	18.0	17.0	5.8	5.9	105	100
Texas .....	360.0	315.0	7.2	7.3	2,600	2,300
Utah .....	275.0	280.0	8.7	8.9	2,400	2,500
Virginia .....	35.0	34.0	5.7	5.9	200	200
Washington .....	45.0	40.0	7.7	6.8	345	270
West Virginia .....	21.0	19.0	6.0	6.1	126	115
Wisconsin .....	61.0	63.0	7.0	7.1	425	450
Wyoming .....	275.0	280.0	8.9	9.3	2,450	2,600
Other States <sup>2</sup> .....	45.0	48.0	6.4	6.3	290	300
United States .....	4,030.0	3,930.0	7.3	7.3	29,290	28,500

<sup>1</sup> New England includes Connecticut, Maine, Massachusetts, New Hampshire, Rhode Island, and Vermont.

<sup>2</sup> Unpublished states.

## Wool Price and Value – States and United States: 2011 and 2012

[United States value may not add due to rounding]

State	Price per pound		Value <sup>1</sup>	
	2011 (dollars)	2012 (dollars)	2011 (1,000 dollars)	2012 (1,000 dollars)
Arizona .....	0.50	0.75	345	413
California .....	1.70	1.60	4,930	4,480
Colorado .....	2.15	2.00	5,590	5,000
Idaho .....	1.70	1.70	3,400	3,230
Illinois .....	0.46	0.72	140	223
Indiana .....	0.41	0.67	98	168
Iowa .....	0.58	0.70	580	630
Kansas .....	0.70	0.78	200	179
Kentucky .....	0.55	0.55	47	52
Michigan .....	0.60	0.68	246	265
Minnesota .....	0.62	0.73	539	584
Missouri .....	0.71	0.60	213	162
Montana .....	2.40	2.10	4,440	4,053
Nebraska .....	0.80	0.68	328	286
Nevada .....	1.90	1.90	1,017	1,083
New England <sup>2</sup> .....	0.70	0.80	165	184
New Mexico .....	1.85	2.00	1,295	1,300
New York .....	0.60	0.70	126	154
North Carolina .....	1.00	1.50	34	53
North Dakota .....	1.40	1.45	756	754
Ohio .....	0.56	0.60	328	336
Oklahoma .....	0.70	0.70	98	105
Oregon .....	1.70	1.56	1,870	1,716
Pennsylvania .....	0.44	0.44	156	163
South Dakota .....	1.84	1.67	3,625	3,156
Tennessee .....	0.72	1.01	76	101
Texas .....	2.21	1.67	5,746	3,841
Utah .....	1.90	1.60	4,560	4,000
Virginia .....	0.65	0.90	130	180
Washington .....	1.65	1.55	569	419
West Virginia .....	0.82	0.94	103	108
Wisconsin .....	0.70	0.75	298	338
Wyoming .....	2.57	2.10	6,297	5,460
Other States <sup>3</sup> .....	2.00	1.50	580	450
United States .....	1.67	1.53	48,925	43,626

<sup>1</sup> Production multiplied by marketing year average price. United States value is the summation of State values.

<sup>2</sup> New England includes Connecticut, Maine, Massachusetts, New Hampshire, Rhode Island, and Vermont.

<sup>3</sup> Unpublished states.

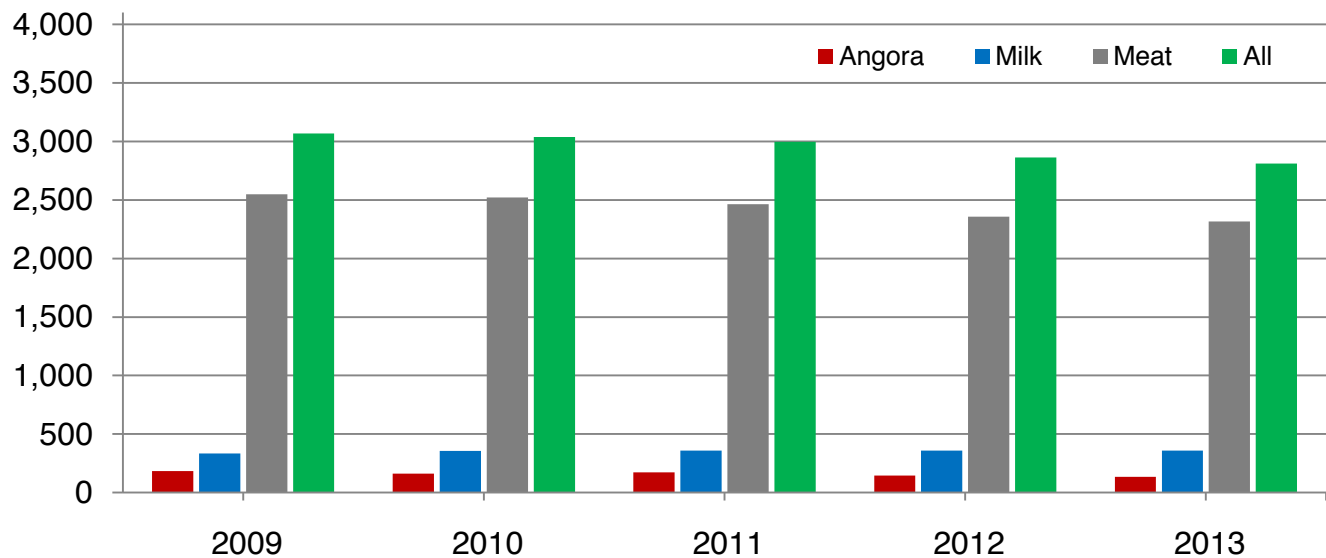
## Goat Inventory by Class – United States: January 1, 2012 and 2013

Class	2012	2013	2013 as percent of 2012
	(head)	(head)	(percent)
All goats and kids .....	2,862,000	2,811,000	98
All, breeding goats .....	2,375,000	2,321,000	98
Replacement kids - under one year .....	421,000	412,000	98
Does - one year old and older .....	1,775,000	1,734,000	98
Bucks - one year old and older .....	179,000	175,000	98
All, market goats and kids .....	487,000	490,000	101
Kid crop <sup>1</sup> .....	1,879,000	1,787,000	95

<sup>1</sup> Kid crop refers to kids born the previous year.

## Goat Inventory – United States: January 1

Thousand head



### Angora Goat Inventory by Class – United States: January 1, 2012 and 2013

Class	2012	2013	2013 as percent of 2012
	(head)	(head)	(percent)
Angora goats and kids .....	146,000	136,000	93
Angora, breeding goats .....	130,000	121,000	93
Replacement kids - under one year .....	20,000	18,000	90
Does - one year old and older .....	102,000	96,000	94
Bucks - one year old and older .....	8,000	7,000	88
Angora, market goats and kids .....	16,000	15,000	94
Kid crop <sup>1</sup> .....	81,000	70,000	86

<sup>1</sup> Kid crop refers to kids born the previous year.

### Milk Goat Inventory by Class – United States: January 1, 2012 and 2013

Class	2012	2013	2013 as percent of 2012
	(head)	(head)	(percent)
Milk goats and kids .....	360,000	360,000	100
Milk, breeding goats .....	324,000	325,000	100
Replacement kids - under one year .....	68,000	68,000	100
Does - one year old and older .....	233,000	234,000	100
Bucks - one year old and older .....	23,000	23,000	100
Milk, market goats and kids .....	36,000	35,000	97
Kid crop <sup>1</sup> .....	267,000	267,000	100

<sup>1</sup> Kid crop refers to kids born the previous year.

### Meat and Other Goat Inventory by Class – United States: January 1, 2012 and 2013

Class	2012	2013	2013 as percent of 2012
	(head)	(head)	(percent)
Meat and other goats and kids .....	2,356,000	2,315,000	98
Meat and other, breeding goats .....	1,921,000	1,875,000	98
Replacement kids - under one year .....	333,000	326,000	98
Does - one year old and older .....	1,440,000	1,404,000	98
Bucks - one year old and older .....	148,000	145,000	98
Meat and other, market goats and kids .....	435,000	440,000	101
Kid crop <sup>1</sup> .....	1,531,000	1,450,000	95

<sup>1</sup> Kid crop refers to kids born the previous year.

## Angora Goat Inventory – States and United States: January 1, 2012 and 2013

State	2012	2013	2013 as percent of 2012
	(head)	(head)	(percent)
Arizona .....	23,000	27,000	117
California .....	3,500	3,500	100
Colorado .....	1,000	(D)	(D)
Minnesota .....	1,000	1,000	100
Missouri .....	1,500	2,700	180
New England <sup>1</sup> .....	1,100	1,100	100
New Mexico .....	11,500	12,000	104
Oregon .....	2,400	2,200	92
Texas .....	85,000	72,000	85
Washington .....	(D)	1,000	(D)
Wisconsin .....	(D)	1,000	(D)
Other States <sup>2</sup> .....	16,000	12,500	(X)
United States .....	146,000	136,000	93

(D) Withheld to avoid disclosing data for individual operations.

(X) Not applicable.

<sup>1</sup> New England includes Connecticut, Maine, Massachusetts, New Hampshire, Rhode Island, and Vermont.

<sup>2</sup> Unpublished states.

## Mohair Production, Price, and Value – States and United States: 2011 and 2012

State	Goats clipped		Average clip per goat		Production		Price per pound		Value <sup>1</sup>	
	2011	2012	2011	2012	2011	2012	2011	2012	2011	2012
	(head)	(head)	(pounds)	(pounds)	(1,000 pounds)	(1,000 pounds)	(dollars)	(dollars)	(1,000 dollars)	(1,000 dollars)
Arizona .....	23,000	25,000	4.8	4.0	110	100	2.00	1.95	220	195
California .....	3,000	3,000	6.7	6.7	20	20	6.00	6.00	120	120
New Mexico .....	10,000	10,500	5.0	4.3	50	45	2.60	2.60	130	117
Texas .....	90,000	75,000	5.9	6.3	530	470	5.10	4.80	2,703	2,256
Other States <sup>2</sup> ..	21,500	22,500	6.0	6.0	130	135	2.49	2.25	324	304
United States ...	147,500	136,000	5.7	5.7	840	770	4.16	3.89	3,497	2,992

<sup>1</sup> Production multiplied by marketing year average price. United States value is summation of State values.

<sup>2</sup> Unpublished states.

## Milk Goat Inventory – States and United States: January 1, 2012 and 2013

State	2012	2013	2013 as percent of 2012
	(head)	(head)	(percent)
Alabama .....	3,300	3,500	106
Arizona .....	3,000	3,000	100
Arkansas .....	4,700	3,800	81
California .....	41,000	40,500	99
Colorado .....	11,000	12,200	111
Florida .....	6,000	6,100	102
Georgia .....	2,900	3,500	121
Idaho .....	4,000	4,600	115
Illinois .....	3,900	4,200	108
Indiana .....	11,500	12,700	110
Iowa .....	32,500	29,000	89
Kansas .....	5,300	4,900	92
Kentucky .....	7,000	6,000	86
Louisiana .....	1,300	1,300	100
Maryland .....	2,300	2,000	87
Michigan .....	10,000	9,600	96
Minnesota .....	11,500	13,500	117
Mississippi .....	3,100	3,300	106
Missouri .....	9,000	10,000	111
Montana .....	2,500	2,400	96
Nebraska .....	3,100	2,800	90
New England <sup>1</sup> .....	11,100	12,300	111
New Jersey .....	2,000	2,100	105
New Mexico .....	2,800	2,700	96
New York .....	12,800	10,900	85
North Carolina .....	6,300	6,300	100
North Dakota .....	(D)	1,000	
Ohio .....	10,000	9,500	95
Oklahoma .....	7,000	6,100	87
Oregon .....	10,700	12,300	115
Pennsylvania .....	15,000	13,000	87
South Carolina .....	3,000	3,100	103
South Dakota .....	2,100	2,100	100
Tennessee .....	9,000	8,600	96
Texas .....	20,000	18,000	90
Utah .....	1,800	2,200	122
Virginia .....	5,200	5,100	98
Washington .....	6,700	8,500	127
West Virginia .....	2,500	2,300	92
Wisconsin .....	44,000	46,000	105
Wyoming .....	1,100	1,300	118
Other States <sup>2</sup> .....	8,000	7,700	(X)
United States .....	360,000	360,000	100

(D) Withheld to avoid disclosing data for individual operations.

(X) Not applicable.

<sup>1</sup> New England includes Connecticut, Maine, Massachusetts, New Hampshire, Rhode Island, and Vermont.

<sup>2</sup> Unpublished states.



## Meat and Other Goat Inventory – States and United States: January 1, 2012 and 2013

State	2012	2013	2013 as percent of 2012
	(head)	(head)	(percent)
Alabama .....	53,500	42,000	79
Arizona .....	29,000	25,000	86
Arkansas .....	48,000	42,000	88
California .....	96,500	98,500	102
Colorado .....	39,000	32,000	82
Florida .....	56,000	54,000	96
Georgia .....	65,100	64,200	99
Hawaii .....	7,700	12,000	156
Idaho .....	12,300	13,500	110
Illinois .....	24,000	21,000	88
Indiana .....	30,000	29,000	97
Iowa .....	27,000	23,500	87
Kansas .....	43,000	34,000	79
Kentucky .....	68,000	69,000	101
Louisiana .....	20,000	23,000	115
Maryland .....	10,600	11,000	104
Michigan .....	18,000	18,500	103
Minnesota .....	23,500	24,600	105
Mississippi .....	27,000	28,000	104
Missouri .....	83,500	82,000	98
Montana .....	6,900	6,700	97
Nebraska .....	20,000	17,000	85
Nevada .....	5,000	5,000	100
New England <sup>1</sup> .....	12,400	13,700	110
New Jersey .....	7,200	7,500	104
New Mexico .....	13,000	15,000	115
New York .....	27,000	28,000	104
North Carolina .....	72,000	70,000	97
North Dakota .....	2,800	2,500	89
Ohio .....	65,500	62,000	95
Oklahoma .....	91,000	106,000	116
Oregon .....	25,000	26,600	106
Pennsylvania .....	45,500	43,000	95
South Carolina .....	43,500	43,000	99
South Dakota .....	7,800	7,100	91
Tennessee .....	121,000	114,000	94
Texas .....	855,000	850,000	99
Utah .....	12,000	12,000	100
Virginia .....	65,000	67,000	103
Washington .....	25,000	25,000	100
West Virginia .....	23,000	22,500	98
Wisconsin .....	21,000	17,000	81
Wyoming .....	4,700	4,500	96
Other States <sup>2</sup> .....	3,000	3,100	103
United States .....	2,356,000	2,315,000	98

<sup>1</sup> New England includes Connecticut, Maine, Massachusetts, New Hampshire, Rhode Island, and Vermont.

<sup>2</sup> Unpublished states.

## Statistical Methodology

**Survey Procedures:** A random sample of United States producers was surveyed to provide data for these estimates. Survey procedures ensured that all sheep and goat producers, regardless of size, had a chance to be included in the survey. Large producers were sampled more heavily than small operations. About 23,000 operators were contacted during the first half of January by mail, telephone and face-to-face personal interview and 75 percent of the reports were usable. Regardless of when operators responded, they were asked to report inventories as of January 1.

**Estimating Procedures:** These sheep and goat estimates were prepared by the Agricultural Statistics Board. National and State survey data were reviewed for reasonableness and with estimates from past years. A projected balance sheet for calendar year 2012 was also used. The balance sheet begins with the previous inventory estimate, adds estimates of births and imports, and subtracts estimates of slaughter, exports and deaths. This indicated ending inventory level is compared with the Agricultural Statistics Board estimate for reasonableness.

**Revision Policy:** Revisions to previous estimates are made to improve the current estimate. Previous year estimates are subject to revision when current estimates are made. Estimates will also be reviewed after data from the Department of Agriculture's five-year Census of Agriculture are available. No revisions will be made after that date.

**Reliability:** Since all operations raising sheep and goats are not included in the sample, survey estimates are subject to sampling variability. Survey results are also subject to non-sampling errors, such as omissions, duplications, and mistakes in reporting, recording, and processing the data. The effects of these errors cannot be measured directly. They are minimized through rigid quality controls in the data collection process and through a careful review of all reported data for consistency and reasonableness.

To assist users in evaluating reliability of the estimates in this report, the "**Root Mean Square Error**" is shown for selected sheep items in the following table. The "Root Mean Square Error" is a statistical measure based on past performance and is computed using the differences between the first and latest estimates.

The "Root Mean Square Error" for sheep and lamb inventory estimates over the past 10 years is 0.8 percent. This means that chances are 2 out of 3 that the final estimate will not be above or below the current estimate of 5.34 million head by more than 0.8 percent. Chances are 9 out of 10 that the difference will not exceed 1.4 percent.

The "Root Mean Square Error" for sheep shorn over the past 10 years is 1.0 percent. This means that chances are 2 out of 3 that the final estimate will not be above or below the current estimate of 3.93 million head by more than 1.0 percent. Chances are 9 out of 10 that the difference will not exceed 1.8 percent.

Also shown in the table is a 10-year record showing the range between the first inventory estimate and the latest estimate. Using estimates for All Sheep and Lambs as an example, changes between the first inventory estimate and the latest estimate during the past 10 years have averaged 34,000 head, ranging from 0 to 105,000 head. The initial inventory estimate of All Sheep and Lambs has been below the latest estimate 1 time and above the latest estimate 7 times in the last 10 years.

For Sheep and Lambs Shorn, changes between the first inventory estimate and the latest estimate during the past 10 years have averaged 24,000 head, ranging from 0 to 110,000 head. The initial inventory estimate of Sheep and Lambs Shorn has been below the latest estimate 3 times and above 6 times in the last 10 years.

## Reliability of January 1 Sheep and Lamb Estimates

[Based on data for the past ten years]

Item	Root mean square error	90 percent confidence level	Difference between first and latest estimate				
			Average	Smallest	Largest	Years	
						Below latest	Above latest
	(percent)	(percent)	(1,000 head)	(1,000 head)	(1,000 head)	(number)	(number)
All sheep and lambs .....	0.8	1.4	34	0	105	1	7
Breeding sheep .....	0.8	1.5	27	0	74	1	8
Lamb crop .....	2.2	4	70	0	155	2	6
Sheep shorn .....	1.0	1.8	24	0	110	3	6
	(percent)	(percent)	(1,000 pounds)	(1,000 pounds)	(1,000 pounds)	(number)	(number)
Wool production .....	1.0	1.9	160	0	890	2	7

## Information Contacts

Listed below are the commodity specialists in the Livestock Branch of the National Agricultural Statistics Service to contact for additional information. E-mail inquiries may be sent to [nass@nass.usda.gov](mailto:nass@nass.usda.gov)

Dan Kerestes, Chief, Livestock Branch .....	(202) 720-3570
Scott Hollis, Head, Livestock Section .....	(202) 690-2424
Travis Averill – Cattle, Cattle on Feed .....	(202) 720-3040
Sherry Bertramsen – Livestock Slaughter .....	(515) 284-4340
Doug Bounds – Hogs and Pigs .....	(202) 720-3106
Donnie Fike – Dairy Products .....	(202) 690-3236
Mike Miller – Milk Production and Milk Cows .....	(202) 720-3278
Alissa Cowell-Mytar – Sheep and Goats .....	(202) 720-4751

## Access to NASS Reports

For your convenience, you may access NASS reports and products the following ways:

- All reports are available electronically, at no cost, on the NASS web site: <http://www.nass.usda.gov>
- Both national and state specific reports are available via a free e-mail subscription. To set-up this free subscription, visit <http://www.nass.usda.gov> and in the “Follow NASS” box under “Receive reports by Email,” click on “National” or “State” to select the reports you would like to receive.

For more information on NASS surveys and reports, call the NASS Agricultural Statistics Hotline at (800) 727-9540, 7:30 a.m. to 4:00 p.m. ET, or e-mail: [nass@nass.usda.gov](mailto:nass@nass.usda.gov).

The United States Department of Agriculture (USDA) prohibits discrimination in all its programs and activities on the basis of race, color, national origin, age, disability, and where applicable, sex, marital status, familial status, parental status, religion, sexual orientation, political beliefs, genetic information, reprisal, or because all or a part of an individual's income is derived from any public assistance program. (Not all prohibited bases apply to all programs.) Persons with disabilities who require alternative means for communication of program information (Braille, large print, audiotape, etc.) should contact USDA's TARGET Center at (202) 720-2600 (voice and TDD).

To file a complaint of discrimination, write to USDA, Assistant Secretary for Civil Rights, Office of the Assistant Secretary for Civil Rights, 1400 Independence Avenue, S.W., Stop 9410, Washington, DC 20250-9410, or call toll-free at (866) 632-9992 (English) or (800) 877-8339 (TDD) or (866) 377-8642 (English Federal-relay) or (800) 845-6136 (Spanish Federal-relay). USDA is an equal opportunity provider and employer.



# Managing Risk 21<sup>st</sup> *in the* CENTURY

February 21-22, 2013  
Crystal Gateway Marriott Hotel  
Arlington, Virginia

**[www.usda.gov/oce/forum](http://www.usda.gov/oce/forum)**



USDA is an equal opportunity provider and employer.

