



# Cattle on Feed

ISSN: 1948-9080

---

Released November 22, 2013, by the National Agricultural Statistics Service (NASS), Agricultural Statistics Board, United States Department of Agriculture (USDA).

## United States Cattle on Feed Down 6 Percent

**Cattle and calves on feed** for slaughter market in the United States for feedlots with capacity of 1,000 or more head totaled 10.6 million head on November 1, 2013. The inventory was 6 percent below November 1, 2012.

**Placements** in feedlots during October totaled 2.39 million, 10 percent above 2012. Net placements were 2.32 million head. During October, placements of cattle and calves weighing less than 600 pounds were 720,000, 600-699 pounds were 584,000, 700-799 pounds were 510,000, and 800 pounds and greater were 580,000.

**Marketings** of fed cattle during October totaled 1.86 million, 1 percent above 2012.

**Other disappearance** totaled 75,000 during October, 4 percent below 2012.

**Number of Cattle on Feed, Placements, Marketings, and Other Disappearance on 1,000+ Capacity Feedlots – United States: November 1, 2012 and 2013**

Item	Number		Percent of previous year
	2012	2013	
	(1,000 head)	(1,000 head)	(percent)
On feed October 1 .....	10,989	10,144	92
Placed on feed during October .....	2,180	2,394	110
Fed cattle marketed during October .....	1,837	1,856	101
Other disappearance during October .....	78	75	96
On feed November 1 .....	11,254	10,607	94

**Number of Cattle on Feed, Placements, Marketings, and Other Disappearance on 1,000+ Capacity Feedlots – United States: October 1, 2012 and 2013**

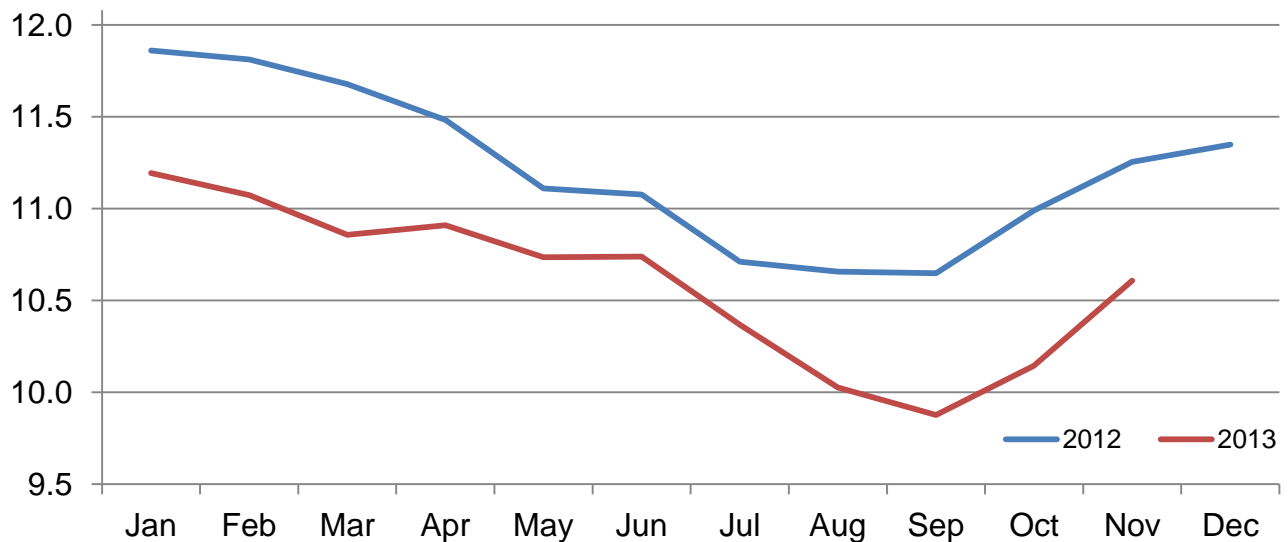
Item	Number		Percent of previous year
	2012	2013	
	(1,000 head)	(1,000 head)	(percent)
On feed September 1 .....	10,647	9,876	93
Placed on feed during September .....	2,004	2,025	101
Fed cattle marketed during September .....	1,598	1,695	106
Other disappearance during September .....	64	62	97
On feed October 1 .....	10,989	10,144	92

**Number of Cattle on Feed on 1,000+ Capacity Feedlots by Month – States and United States: 2012 and 2013**

State	November 1, 2012	October 1, 2013	November 1, 2013		
			Number	Percent of previous year	Percent of previous month
	(1,000 head)	(1,000 head)	(1,000 head)	(percent)	(percent)
Arizona .....	265	268	270	102	101
California .....	480	500	505	105	101
Colorado .....	1,030	870	950	92	109
Idaho .....	240	210	220	92	105
Iowa .....	590	560	590	100	105
Kansas .....	2,220	2,000	2,050	92	103
Nebraska .....	2,480	2,210	2,370	96	107
Oklahoma .....	345	285	270	78	95
South Dakota .....	220	180	200	91	111
Texas .....	2,670	2,460	2,530	95	103
Washington .....	248	184	203	82	110
Other States .....	466	417	449	96	108
United States .....	11,254	10,144	10,607	94	105

**Cattle on Feed Inventory on 1,000+ Capacity Feedlots – United States**

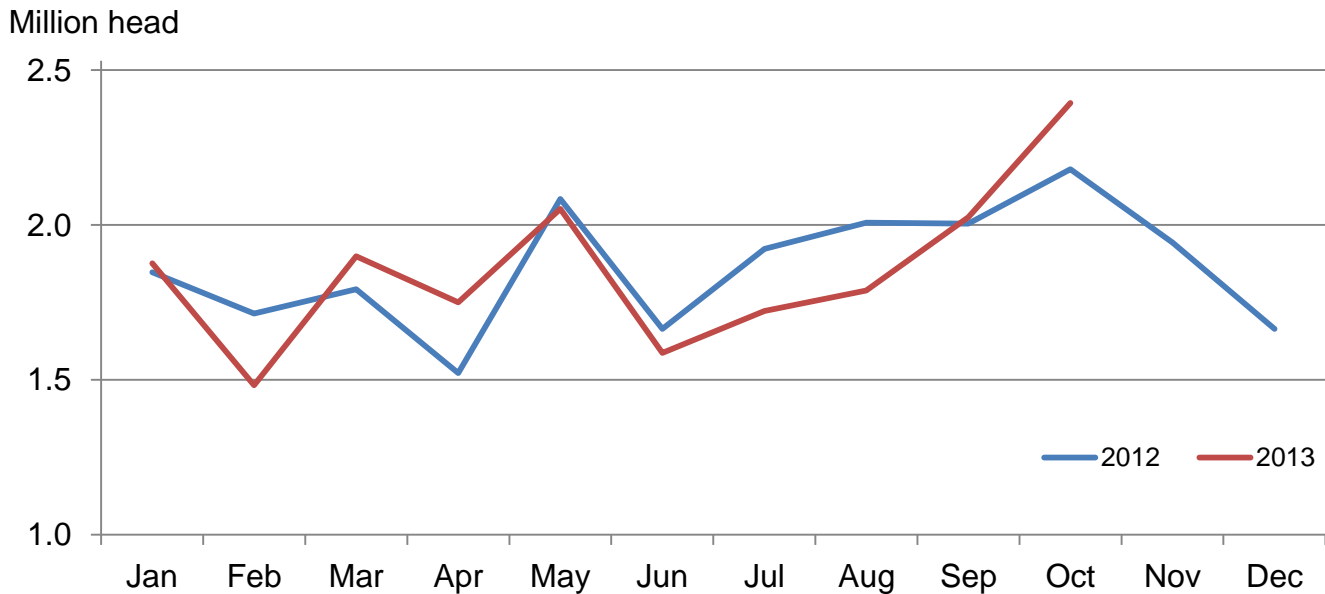
Million head



**Number of Cattle Placed on Feed on 1,000+ Capacity Feedlots by Month – States and United States: 2012 and 2013**

State	During October 2012	During September 2013	During October 2013		
			Number	Percent of previous year	Percent of previous month
	(1,000 head)	(1,000 head)	(1,000 head)	(percent)	(percent)
Arizona .....	19	23	28	147	122
California .....	62	50	61	98	122
Colorado .....	195	190	230	118	121
Idaho .....	55	62	56	102	90
Iowa .....	146	101	128	88	127
Kansas .....	380	390	470	124	121
Nebraska .....	590	520	630	107	121
Oklahoma .....	65	67	65	100	97
South Dakota .....	71	43	59	83	137
Texas .....	450	480	530	118	110
Washington .....	74	37	59	80	159
Other States .....	73	62	78	107	126
United States .....	2,180	2,025	2,394	110	118

**Number of Cattle Placed on 1,000+ Capacity Feedlots – United States**



**Number of Cattle Placed on Feed by Weight Group on 1,000+ Capacity Feedlots by Month – States and United States: 2012 and 2013**

State	During October									
	Under 600 lbs		600-699 lbs		700-799 lbs		800+ lbs		Total	
	2012	2013	2012	2013	2012	2013	2012	2013	2012	2013
	(1,000 head)	(1,000 head)	(1,000 head)	(1,000 head)	(1,000 head)	(1,000 head)	(1,000 head)	(1,000 head)	(1,000 head)	(1,000 head)
Colorado .....	65	80	45	50	35	45	50	55	195	230
Kansas .....	80	90	95	120	120	140	85	120	380	470
Nebraska .....	190	170	130	170	80	90	190	200	590	630
Texas .....	165	190	125	125	100	150	60	65	450	530
Other States .....	180	190	110	119	100	85	175	140	565	534
United States .....	680	720	505	584	435	510	560	580	2,180	2,394

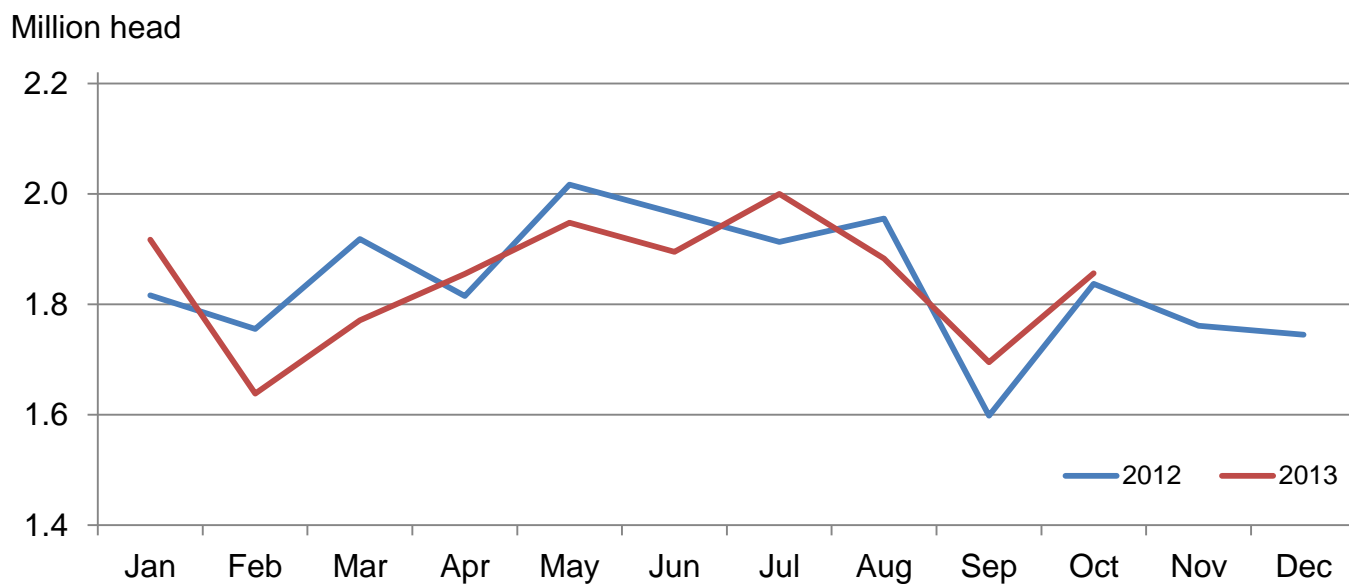
  

State	During September									
	Under 600 lbs		600-699 lbs		700-799 lbs		800+ lbs		Total	
	2012	2013	2012	2013	2012	2013	2012	2013	2012	2013
	(1,000 head)	(1,000 head)	(1,000 head)	(1,000 head)	(1,000 head)	(1,000 head)	(1,000 head)	(1,000 head)	(1,000 head)	(1,000 head)
Colorado .....	40	35	20	20	55	50	110	85	225	190
Kansas .....	80	70	85	85	105	120	105	115	375	390
Nebraska .....	90	75	60	70	100	105	220	270	470	520
Texas .....	185	185	130	110	100	115	65	70	480	480
Other States .....	120	110	60	50	84	90	190	195	454	445
United States .....	515	475	355	335	444	480	690	735	2,004	2,025

**Number of Cattle Marketed on 1,000+ Capacity Feedlots by Month – States and United States: 2012 and 2013**

State	During October 2012	During September 2013	During October 2013		
			Number	Percent of previous year	Percent of previous month
	(1,000 head)	(1,000 head)	(1,000 head)	(percent)	(percent)
Arizona .....	25	20	25	100	125
California .....	54	53	52	96	98
Colorado .....	160	145	145	91	100
Idaho .....	44	41	45	102	110
Iowa .....	143	89	96	67	108
Kansas .....	365	355	400	110	113
Nebraska .....	425	390	455	107	117
Oklahoma .....	54	60	78	144	130
South Dakota .....	45	32	38	84	119
Texas .....	440	430	440	100	102
Washington .....	38	36	39	103	108
Other States .....	44	44	43	98	98
United States .....	1,837	1,695	1,856	101	109

## Number of Cattle Marketed on 1,000+ Capacity Feedlots – United States



### Other Disappearance on 1,000+ Capacity Feedlots by Month – States and United States: 2012 and 2013

State	During October 2012 (1,000 head)	During September 2013 (1,000 head)	During October 2013		
			Number (1,000 head)	Percent of previous year (percent)	Percent of previous month (percent)
Arizona .....	1	1	1	100	100
California .....	3	2	4	133	200
Colorado .....	5	5	5	100	100
Idaho .....	1	1	1	100	100
Iowa .....	3	2	2	67	100
Kansas .....	25	15	20	80	133
Nebraska .....	15	10	15	100	150
Oklahoma .....	1	2	2	200	100
South Dakota .....	1	1	1	100	100
Texas .....	20	20	20	100	100
Washington .....	1	1	1	100	100
Other States .....	2	2	3	150	150
United States .....	78	62	75	96	121

## Terms and Definitions of Cattle on Feed Estimates

**Cattle on feed** are animals being fed a ration of grain, silage, hay and/or protein supplement for slaughter market that are expected to produce a carcass that will grade select or better. It excludes cattle being "backgrounded only" for later sale as feeders or later placement in another feedlot.

**Placements** are cattle put into a feedlot, fed a ration which will produce a carcass that will grade select or better, and are intended for the slaughter market.

**Marketings** are cattle shipped out of feedlots to a slaughter market.

**Other disappearance** includes death loss, movement from feedlots to pasture, and shipments to other feedlots for further feeding.

## Reliability of Cattle on Feed Estimates

**Survey Procedures:** During January and July all known feedlots in the United States with capacity of 1,000 or more head are surveyed to provide data for cattle on feed estimates. During the other months, all known feedlots from 16 States are surveyed. The 16 States account for approximately 98 percent of the cattle on feed in feedlots with capacity of 1,000 or more head. Individual State estimates are published monthly for 11 of the 16 States. Data collected from the remaining 5 States are used to establish the "Other States" estimates. These 5 States include Illinois, Minnesota, New Mexico, Oregon, and Wyoming. The "Other States" category represents all cattle on feed with a capacity of 1,000 or more head for the rest of the United States.

**Estimating Procedures:** These cattle on feed estimates were prepared by the Agricultural Statistics Board after reviewing recommendations and analysis submitted by each State office. Regional and State survey data were reviewed for reasonableness with each other and with estimates from the previous month when establishing the current estimates.

**Revision Policy:** Revisions to previous estimates are made to improve month to month relationships. Estimates for the previous month are subject to revision in all States each month when current estimates are made. In February, all monthly estimates for the previous year, and the number of feedlots and annual marketings from two years ago are reviewed and subject to revisions. The reviews are primarily based on slaughter data, state check-off or brand data, and any other data that may have been received after the original estimate was made. Estimates will also be reviewed after data from the Census of Agriculture are available. No revisions will be made after that date and estimates become final.

**Reliability:** Since all 1,000+ capacity cattle on feed operators in every State are not included in the monthly survey, survey estimates are subject to sampling variability. Survey results are also subject to non-sampling errors such as omissions, duplications, and mistakes in reporting, recording, and processing the data. The effects of these errors cannot be measured directly. They are minimized through rigid quality controls in the data collection process and through a careful review of all reported data for consistency and reasonableness.

To assist users in evaluating the reliability of estimates in this report, the "**Root Mean Square Error**" is shown for selected items in the table on the following page. The "Root Mean Square Error" is a statistical measure based on past performance and is computed using the differences between first and latest estimates. The "Root Mean Square Error" for cattle on feed inventory estimates over the past 24 months is 0.1 percent. This means that chances are 2 out of 3 that the final estimate will not be above or below the current estimate of 10.6 million head by more than 0.1 percent. Chances are 9 out of 10 that the difference will not exceed 0.2 percent.

The table on the following page shows a 24 month record of the range of differences between first and latest estimates for selected items. Using estimates of number on feed as an example, changes between the first estimate and the latest estimate during the past 24 months have averaged 4,000 head, ranging from 0 to 35,000 head. During this period the initial estimate has been above the latest estimate 3 times and has been below the latest estimate 3 times. This does not imply that the initial estimate is likely to understate or overstate final inventory.

## Reliability of Monthly Cattle on Feed Estimates

[Based on data for the past 24 months]

Item	Root mean square error	90 percent confidence level	Difference between first and latest estimate				
			Average	Smallest	Largest	Months	
						Below latest	Above latest
	(percent)	(percent)	(1,000)	(1,000)	(1,000)	(number)	(number)
Number on feed .....	0.1	0.2	4	0	35	3	3
Placements .....	0.3	0.4	2	0	20	4	3
Marketings .....	0.2	0.4	1	0	20	3	2

## Information Contacts

Listed below are the commodity specialists in the Livestock Branch of the National Agricultural Statistics Service to contact for additional information. E-mail inquiries may be sent to [nass@nass.usda.gov](mailto:nass@nass.usda.gov)

Dan Kerestes, Chief, Livestock Branch .....	(202) 720-3570
Scott Hollis, Head, Livestock Section .....	(202) 690-2424
Travis Averill – Cattle, Cattle on Feed .....	(202) 720-3040
Doug Bounds – Hogs and Pigs .....	(202) 720-3106
Alissa Cowell-Mytar – Sheep and Goats .....	(202) 720-4751
Donnie Fike – Dairy Products .....	(202) 690-3236
Tiffany Hora – Livestock Slaughter .....	(515) 284-4340
Mike Miller – Milk Production and Milk Cows .....	(202) 720-3278



## Access to NASS Reports

For your convenience, you may access NASS reports and products the following ways:

- All reports are available electronically, at no cost, on the NASS web site: <http://www.nass.usda.gov>
- Both national and state specific reports are available via a free e-mail subscription. To set-up this free subscription, visit <http://www.nass.usda.gov> and in the “Follow NASS” box under “Receive reports by Email,” click on “National” or “State” to select the reports you would like to receive.

For more information on NASS surveys and reports, call the NASS Agricultural Statistics Hotline at (800) 727-9540, 7:30 a.m. to 4:00 p.m. ET, or e-mail: [nass@nass.usda.gov](mailto:nass@nass.usda.gov).

The U.S. Department of Agriculture (USDA) prohibits discrimination against its customers, employees, and applicants for employment on the bases of race, color, national origin, age, disability, sex, gender identity, religion, reprisal, and where applicable, political beliefs, marital status, familial or parental status, sexual orientation, or all or part of an individual's income is derived from any public assistance program, or protected genetic information in employment or in any program or activity conducted or funded by the Department. (Not all prohibited bases will apply to all programs and/or employment activities.)

If you wish to file a Civil Rights program complaint of discrimination, complete the [USDA Program Discrimination Complaint Form](#) (PDF), found online at [http://www.ascr.usda.gov/complaint\\_filing\\_cust.html](http://www.ascr.usda.gov/complaint_filing_cust.html), or at any USDA office, or call (866) 632-9992 to request the form. You may also write a letter containing all of the information requested in the form. Send your completed complaint form or letter to us by mail at U.S. Department of Agriculture, Director, Office of Adjudication, 1400 Independence Avenue, S.W., Washington, D.C. 20250-9410, by fax (202) 690-7442 or email at [program.intake@usda.gov](mailto:program.intake@usda.gov).