

Bandit Software: Batch submission of Bird Banding Data Collection

Bandit Software

OMB Control #_1028-0082
Approval expires:1/31/2016

Read me before upgrading to 4.0!

Bandit 4.0 Software PC (For Windows XP and higher. File size 34 mb)

Bandit 4.0 Software Mac (for OS X 10.5.7 and higher. File size 58 mb)

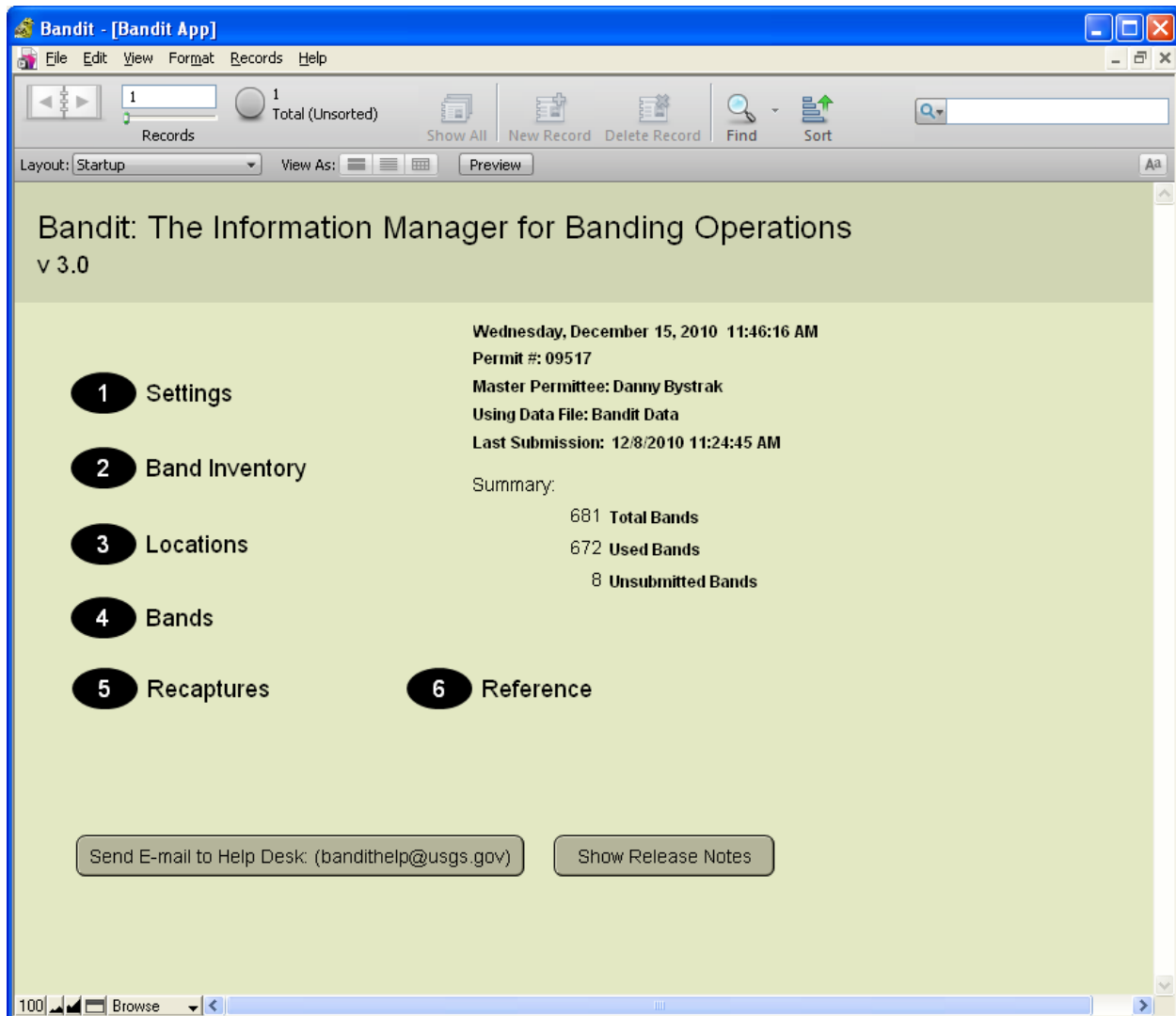
Before installing 4.0 - If you are currently using Bandit, it is advisable to first work through your existing bandings and recaptures, and submit all records to BBL before upgrading. Then save a final separate backup file to preserve all data, locations and settings in case they are needed later.

PAPERWORK REDUCTION ACT STATEMENT: In accordance with the Paperwork Reduction Act (44 U.S.C. 3501), please note the following. This information collection is authorized by The Migratory Bird Treaty Act, 16 U.S.C. 703-712. Reporting of banding information is required using the BANDIT software. We estimate that it will take approximately 4.5 hours to enter data files into BANDIT. An agency may not conduct or sponsor and a person is not required to respond to a collection of information unless it displays a currently valid Office of Management and Budget control number. OMB has reviewed and approved this information collection and assigned OMB Control Number 1028-0082. You may submit comments on any aspect of this information collection, including the accuracy of the estimated burden hours and suggestions to reduce this burden. Send your comments to: Information Collection Clearance Officer, U.S. Geological Survey, 12201 Sunrise Valley Drive, MS 807, Reston, VA 20192.

This PRA statement will be updated to read: **Reporting of banding information is voluntary but batch submissions must use the BANDIT software.**

This PRA statement is being updated on the software through Change Control Management. The top level menu appears on the next page. There are many data entry forms to customize the settings for the application. All of those pages are visible in the manual that is part of the collection. The main data collection form looks like a spreadsheet and is shown on page 3.

Top Level Menu



Bandit main data entry form

The screenshot shows the Bandit App interface. At the top, there is a menu bar (1) and a toolbar (2) with buttons for Show All, New Record, Delete Record, Find, and Sort. Below the toolbar is a navigation bar with tabs for Inventory, Locations, Bands, Reference, Recaptures, and Settings (3). The main area contains a table (4) with columns: Band Number, Disposition, Species, Age, How Aged, Sex, How Sexed, Banding Date, Bird Status, Bander ID, and Location. The first row of data shows: 1111-10000, 1, BHCO, HY, 1, 7, 2, 10/05/2010, 200, RH, 1111. Other rows are partially visible with 'Undefi' in the Location column. To the right of the table is a report section (5) with a 'Report Name' field containing 'Banding Data Modified after submission' and a 'Show/Print Report' button. At the bottom, there is a filter section (6) with 'Showing: All Records', 'Filter By' fields for Prefix and Suffix Range, and checkboxes for Used, Submitted, and various data fields. A 'Filter' button and a 'Show All' button are also present.

All of the data entry forms follow this same layout for the purpose of uploading a batch of data to Bandit.