



# Agricultural Prices

ISSN: 1937-4216

Released September 29, 2015, by the National Agricultural Statistics Service (NASS), Agricultural Statistics Board, United States Department of Agriculture (USDA).

## August Farm Prices Received Index Up 3.0 percent

The August Prices Received Index (Agricultural Production), at 102, increased 3.0 percent from July. At 88, the Crop Production Index increased 2.3 percent. At 117, the Livestock Production Index increased 1.7 percent. Producers received higher prices for market eggs, lettuce, strawberries, and apples but lower prices for broilers, wheat, onions, and hay. In addition to prices, the indexes are influenced by the monthly mix of commodities producers market. Increased monthly movement of cattle, grapes, calves, and hogs offset the decreased marketing of wheat, soybeans, corn, and hay.

The Prices Received Index is down 6.4 percent from the previous year. The Food Commodities Index, at 110, increased 3.8 percent from the previous month but is down 9.1 percent from August 2014.

## August Prices Paid Index Down 0.9 percent

The August Index of Prices Paid for Commodities and Services, Interest, Taxes, and Farm Wage Rates (PPITW), at 108, is down 0.9 percent from July and down 3.6 percent from August 2014. Lower prices in August for feeder cattle, hay & forages, nitrogen, and diesel more than offset higher prices for complete feeds, supplements, herbicides, and insecticides.

## Prices Received, Prices Paid, and Ratio of Prices Received to Prices Paid Indexes 2011 Base – United States: August 2015 with Comparisons

Index Group	August 2014	July 2015	August 2015
Prices received by farmers .....	109	99	102
Prices paid by farmers .....	112	109	108
Ratio of prices received to prices paid .....	97	91	94

## Contents

Prices Received by Farmers .....	4
Prices Received Indexes, 2011 Base – United States: August 2015 with Comparisons .....	5
Prices Received Indexes, 1910-1914 Base – United States: August 2015 with Comparisons.....	5
Prices Received Indexes, 2011 Base by Month for Selected Groups – United States: 2014 and 2015 .....	5
Prices Paid Indexes, 2011 Base by Month for Selected Groups – United States: 2014 and 2015 .....	6
Received and Paid Indexes, Annual Average – United States: 2011=100 Chart.....	6
Crop Farm Received and Paid Indexes, All Items by Quarter – United States: 2011=100 Chart.....	7
Livestock Farm Received and Paid Indexes All Items by Quarter – United States: 2011=100 Chart.....	7
Received Indexes by Month, Livestock Product, All Product, and All Crop – United States: 2011=100 Chart .....	8
Received Indexes by Month, Food Grain, Feed Grain, and Oilseed – United States: 2011=100 Chart .....	8
Received Indexes by Month, Fruit & Tree Nut and Commercial Vegetable – United States: 2011=100 Chart.....	9
Received Indexes by Month, Meat Animal, Dairy Product, and Poultry & Egg – United States: 2011=100 Chart.....	9
Prices Received for Field Crops and Fruits – United States: August 2015 with Comparisons.....	10
Prices Received for Vegetables and Livestock – United States: August 2015 with Comparisons .....	11
Prices Received for Corn by Month – United States Chart.....	12
Prices Received for Wheat by Month – United States Chart .....	12
Prices Received for Upland Cotton by Month – United States Chart .....	13
Prices Received for Soybeans by Month – United States Chart .....	13
Prices Received for Cattle by Month – United States Chart .....	14
Prices Received for Milk by Month – United States Chart.....	14
Prices Received for Hogs by Month – United States Chart .....	15
Prices Received for Poultry by Month – United States Chart.....	15
Prices Received for All Wheat, Corn, and Soybeans by Month – United States: 2015 with Comparisons .....	16
Prices Received for Beef Cattle and All Hogs by Month – United States: 2015 with Comparisons .....	16
Prices Received for All Wheat – States and United States: August 2015 with Comparisons.....	17
Prices Received for Winter Wheat – States and United States: August 2015 with Comparisons.....	17
Prices Received for Durum Wheat – States and United States: August 2015 with Comparisons.....	18
Prices Received for Spring Wheat – States and United States: August 2015 with Comparisons .....	18
Prices Received for Oats – States and United States: August 2015 with Comparisons.....	18
Prices Received for All Barley – States and United States: August 2015 with Comparisons .....	19
Prices Received for Malting Barley – States: August 2015 with Comparisons .....	19
Prices Received for Feed Barley – States: August 2015 with Comparisons .....	19
Prices Received for Sorghum Grain – States and United States: August 2015 with Comparisons.....	19
Prices Received for Corn – States and United States: August 2015 with Comparisons .....	20
Prices Received for Soybeans – States and United States: August 2015 with Comparisons.....	20
Prices Received for Dry Beans – States and United States: August 2015 with Comparisons .....	21
Prices Received for Peanuts (in shell) – States and United States: August 2015 with Comparisons.....	21
Prices Received for Sunflower – States and United States: August 2015 with Comparisons.....	21
Prices Received for Canola – States and United States: August 2015 with Comparisons.....	21
Prices Received for Flaxseed – States and United States: August 2015 with Comparisons .....	22
Prices Received for Upland Cotton and Cottonseed – States and United States: August 2015 with Comparisons .....	22
Prices Received and Farm Marketings for Upland Cotton and Rice – United States: August 2015 with Comparisons .....	22
Prices Received for Hay by Type – States and United States: August 2015 with Comparisons .....	23
Prices Received for Apples – States and United States: August 2015 with Comparisons.....	23
Prices Received for Citrus Fruits by Utilization – States and United States: August 2014 .....	24
Prices Received for Citrus Fruits by Utilization – States and United States: July 2015 .....	25
Prices Received for Citrus Fruits by Utilization – States and United States: August 2015 .....	26
Prices Received for Potatoes – States and United States: August 2015 with Comparisons.....	27
Prices Received for All Milk – States and United States: August 2015 with Comparisons .....	28
Prices Received for Milk Cows – States and United States: July 2015 with Comparisons .....	28
Parity Price Overview .....	29

Commodity Parity Prices and Price as Percent of Parity Price – United States: August 2015 with Comparisons .....	30
Commodity Parity Prices – United States: August 2015 with Comparisons .....	31
Marketing Year for Specified Commodities .....	33
Austrian Winter Peas Market Year Average Prices Received – States and United States: Marketing Years 2012 through 2014.....	34
Dry Edible Peas Market Year Average Prices Received – States and United States: Marketing Years 2012 through 2014.....	34
Lentils Market Year Average Prices Received – States and United States: Marketing Years 2012 through 2014 .....	34
Sorghum Grain Market Year Average Prices Received – States and United States: Marketing Years 2012 through 2014.....	34
Soybean Market Year Average Prices Received – States and United States: Marketing Years 2012 through 2014 .....	35
Austrian Winter Peas Prices Received and Farm Marketings by Month – United States: Marketing Years 2012-2013 through 2014-2015 .....	36
Dry Edible Peas Prices Received and Farm Marketings by Month – United States: Marketing Years 2012-2013 through 2014-2015 .....	36
Lentils Prices Received and Farm Marketings by Month – United States: Marketing Years 2012-2013 through 2014-2015 .....	37
Corn Prices Received and Farm Marketings by Month – United States: Marketing Years 2012-2013 through 2014-2015 .....	37
Sorghum Grain Prices Received by Month – States and United States: Marketing Years 2013-2014 and 2014-2015 .....	38
Soybean Prices Received by Month – States and United States: Marketing Year 2013-2014 .....	39
Soybean Prices Received by Month – States and United States: Marketing Year 2014-2015 .....	40
Sorghum Grain Farm Marketing Percent by Month – States and United States: Marketing Years 2013-2014 and 2014-2015 .....	41
Soybean Farm Marketing Percent by Month – States and United States: Marketing Years 2013-2014 and 2014-2015 .....	42
Reliability of Prices Received Estimates .....	43
Prices Paid by Farmers.....	44
Prices Paid Indexes and Related Parity Ratios – United States: August 2015 with Comparisons.....	45
Prices Paid Indexes and Annual Weights for Input Components and Sub-components – United States: August 2015 with Comparisons .....	46
Paid Indexes by Month, All Items and Production Items – United States: 2011=100 Chart.....	47
Paid Indexes, Annual Averages, Production Items, Interest, Taxes, and Wages – United States: 2011=100 Chart .....	47
Paid Indexes by Farm Type, All Items – United States: 2011=100 Chart .....	48
Paid Indexes by Origin, All Production Items – United States: 2011=100 Chart.....	48
Paid Indexes by Non-Farm Sector, Supplies & Repairs, Fertilizer, Machinery, and Fuel – United States: 2011=100 Chart.....	49
Paid Indexes by Month, Feed and Replacement Livestock – United States: 2011=100 Chart.....	49
Feed Price Ratios – United States: August 2015 with Comparisons .....	50
Prices Received Used to Calculate Feed Price Ratios – United States: August 2015 with Comparisons .....	50
Prices Paid for Feeder Livestock – United States: August 2015 with Comparisons .....	50
Reliability of Prices Paid Estimates .....	51
Information Contacts .....	52

## August Prices Received by Farmers

The August Prices Received Index for agricultural production is 102 percent of its 2011 base, up 3.0 percent from the July index but 6.4 percent below the August 2014 index.

**Crop Production:** The August index, at 88, increased 2.3 percent from July but is 3.3 percent below August 2014. Index increase for fruit & tree nut production more than offset the index decrease for oilseeds & grains.

**Feed grain:** The August index, at 65, is up 1.6 percent from last month and 3.2 percent above a year ago. The corn price, at \$3.68 per bushel, is down 12 cents from last month but is 5 cents higher than August 2014. At \$7.90 per cwt, sorghum grain is up 22 cents from July and 77 cents above August a year earlier.

**Food grain:** At 67, the index for August is 5.6 percent lower than the previous month and 19 percent below a year earlier. The August price for all wheat, at \$4.85 per bushel, is down 38 cents from July and \$1.12 below August 2014.

**Oilseed:** At 78, the index for August is down 2.5 percent from July and 20 percent lower than August 2014. The soybean price, at \$9.71 per bushel, decreased 24 cents from July and is \$2.69 below August a year earlier.

**Fruit and tree nut:** The August index, at 128, is up 4.9 percent from July but is 3.0 percent lower than a year earlier. Price increases during August for strawberries and apples more than offset price decreases for lemons and grapefruit.

**Vegetable and melon:** At 106, the index for August is down 0.9 percent from the previous month but is 7.1 percent above August 2014. Price declines during August for onions and sweet corn more than offset price increases for lettuce and broccoli.

**Other crop:** The August index, at 85, is down 5.6 percent from the previous month and 13 percent below August 2014. The all hay price, at \$145 per ton, is down \$11.00 from July and \$36.00 lower than August 2014. At 58.0 cents per pound, the price for upland cotton is down 8.1 cents from July and 12.5 cents below August 2014.

**Livestock Production:** The index for August, at 117, is 1.7 percent above the previous month but is down 10 percent from August a year earlier. Compared with a year ago, prices are up for market eggs, turkeys, and calves but lower for milk, hogs, broilers, and cattle.

**Meat animal:** At 123, the August index is up 0.8 percent from the previous month but is 10 percent lower than a year earlier. At \$59.00 per cwt, the August hog price is up 30 cents from July but is \$24.20 lower than a year earlier. The August beef cattle price of \$148 per cwt is down \$1.00 from the previous month and \$10.00 lower than August 2014.

**Dairy:** The index for August, at 83, is unchanged from the previous month but is 31 percent lower than August a year earlier. The August all milk price of \$16.70 per cwt is up 10 cents from July but is down \$7.50 from August 2014.

**Poultry and egg:** At 136, the August index is up 3.8 percent from July and 9.7 percent higher than 2014. The August market egg price, at \$2.38 per dozen, increased 57.0 cents from July and is \$1.52 above August 2014. The August broiler price, at 47.0 cents per pound, is down 4.0 cents from July and 13.0 cents below a year earlier. At 89.7 cents per pound, the August turkey price is up 4.9 cents from the previous month and up 14.1 cents from 2014.

## Prices Received Indexes, 2011 Base – United States: August 2015 with Comparisons

[Revised historical price indexes for months not shown are available at [www.nass.usda.gov](http://www.nass.usda.gov)]

Index Group	2011 Base		
	August 2014	July 2015	August 2015
	(percent)	(percent)	(percent)
Agricultural Production .....	109	99	102
Crop Production .....	91	86	88
Grain and oilseed .....	76	70	69
Feed grain .....	63	64	65
Food grain .....	83	71	67
Oilseed .....	97	80	78
Fruit and tree nut .....	132	122	128
Vegetable and melon .....	99	107	106
Other crop .....	98	90	85
Livestock Production .....	130	115	117
Meat animal .....	137	122	123
Cattle .....	141	133	133
Hog .....	125	88	89
Dairy .....	120	83	83
Poultry and egg .....	124	131	136
Food Commodity .....	121	106	110

## Prices Received Indexes, 1910-1914 Base – United States: August 2015 with Comparisons

[Revised historical price indexes for months not shown are available at [www.nass.usda.gov](http://www.nass.usda.gov)]

Index Group	1910 - 1914 Base		
	August 2014	July 2015	August 2015
	(percent)	(percent)	(percent)
Agricultural Production .....	1128	1023	1055
Crop Production .....	796	748	767
Livestock Production .....	1515	1337	1359

## Prices Received Indexes, 2011 Base by Month for Selected Groups – United States: 2014 and 2015

[Revised historical price indexes for months not shown are available at [www.nass.usda.gov](http://www.nass.usda.gov). Blank data cells indicate estimation period has not yet begun]

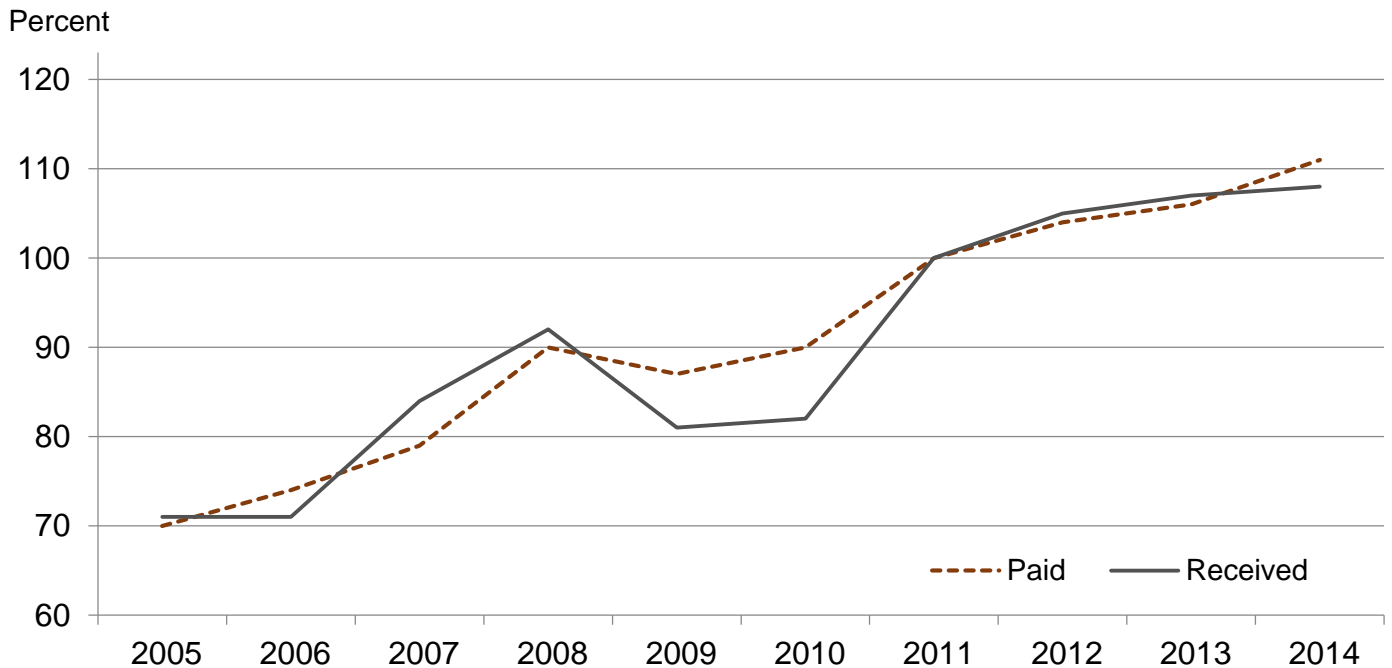
Month	2011 Base							
	Agricultural Production		Crop Production		Livestock Production		Food Commodities	
	2014	2015	2014	2015	2014	2015	2014	2015
	(percent)	(percent)	(percent)	(percent)	(percent)	(percent)	(percent)	(percent)
January .....	99	97	91	82	116	120	111	108
February .....	107	99	94	84	121	114	117	107
March .....	112	102	96	85	128	117	123	110
April .....	115	103	100	89	131	116	126	111
May .....	115	107	100	90	130	122	125	115
June .....	113	105	99	88	128	121	123	113
July .....	110	99	93	86	133	115	121	106
August .....	109	102	91	88	130	117	121	110
September .....	107		87		132		119	
October .....	100		81		135		112	
November .....	102		82		134		120	
December .....	101		83		127		115	

## Prices Paid Indexes, 2011 Base by Month for Selected Groups – United States: 2014 and 2015

[Revised historical price indexes for months not shown are available at [www.nass.usda.gov](http://www.nass.usda.gov). Blank data cells indicate estimation period has not yet begun]

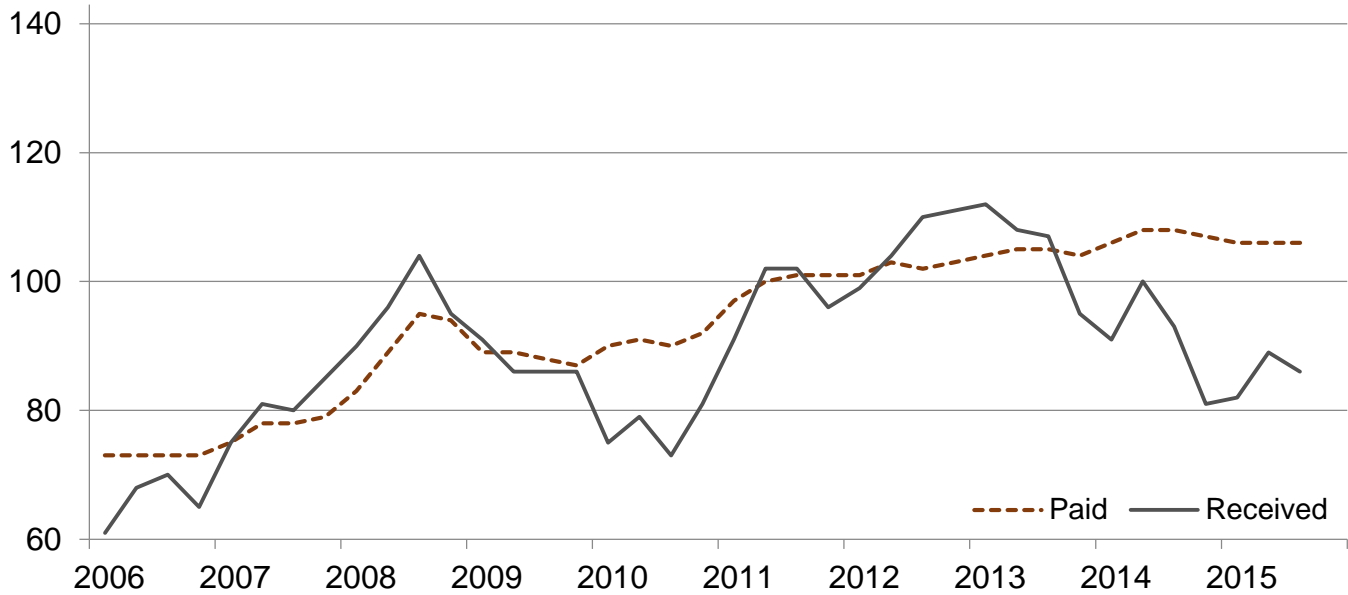
Month	2011 Base							
	All Items (PPITW)		Production		Crop Sector		Livestock Sector	
	2014	2015	2014	2015	2014	2015	2014	2015
	(percent)	(percent)	(percent)	(percent)	(percent)	(percent)	(percent)	(percent)
January .....	108	110	110	111	106	106	111	114
February .....	109	110	110	111	107	106	112	113
March .....	110	110	112	111	107	106	113	114
April .....	112	110	114	111	108	106	116	114
May .....	112	110	115	111	108	106	117	113
June .....	113	109	116	110	108	106	118	113
July .....	113	109	115	110	108	106	118	112
August .....	112	108	114	109	107	105	116	111
September .....	112		115		107		118	
October .....	112		114		107		117	
November .....	112		114		107		117	
December .....	111		114		106		117	

## Received and Paid Indexes, Annual Average – United States: 2011=100



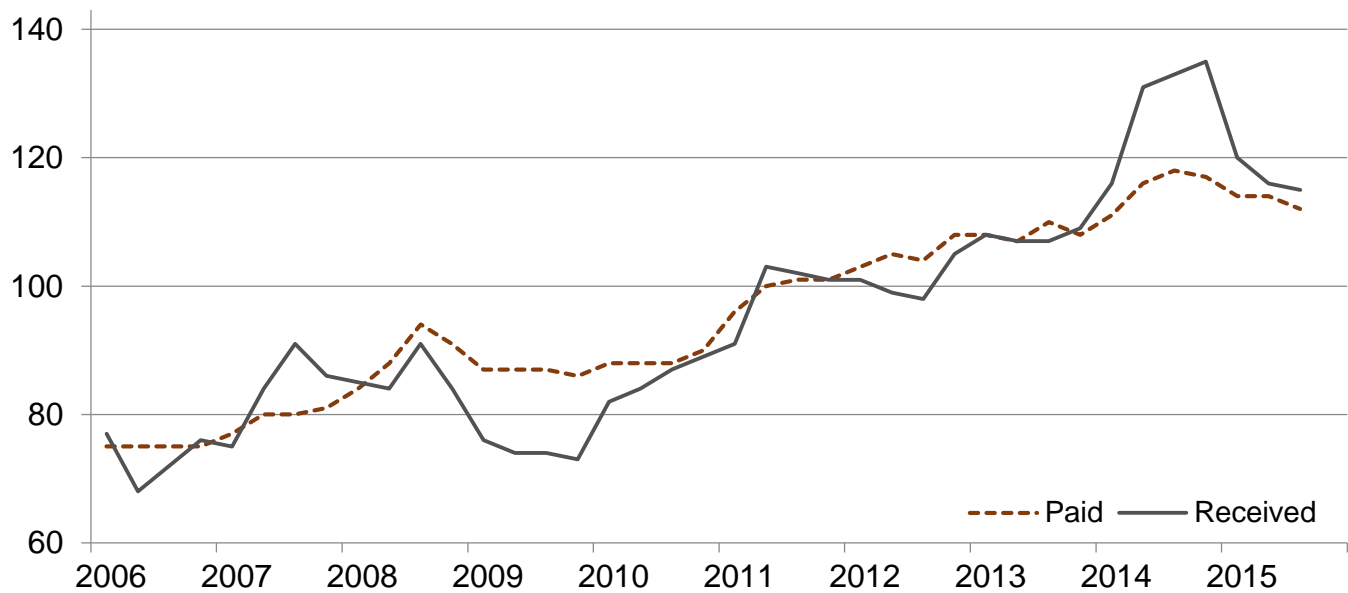
## Crop Farm Received and Paid Indexes, All Items by Quarter – United States: 2011=100

Percent

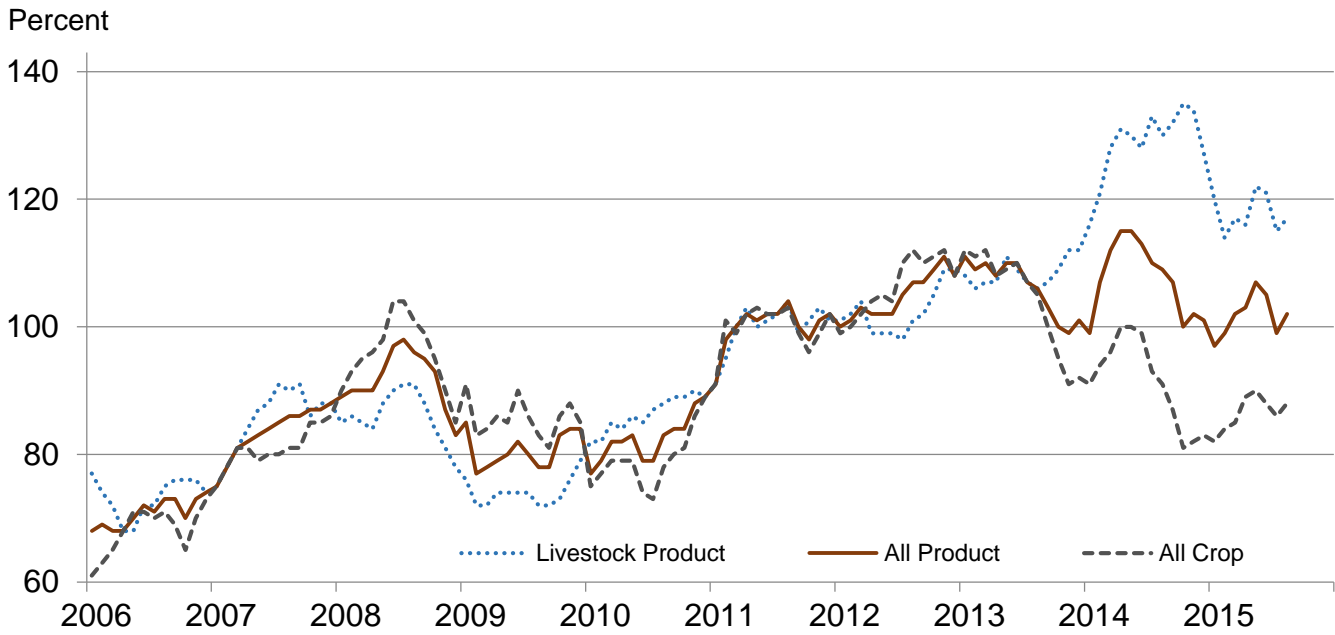


## Livestock Farm Received and Paid Indexes, All Items by Quarter – United States: 2011=100

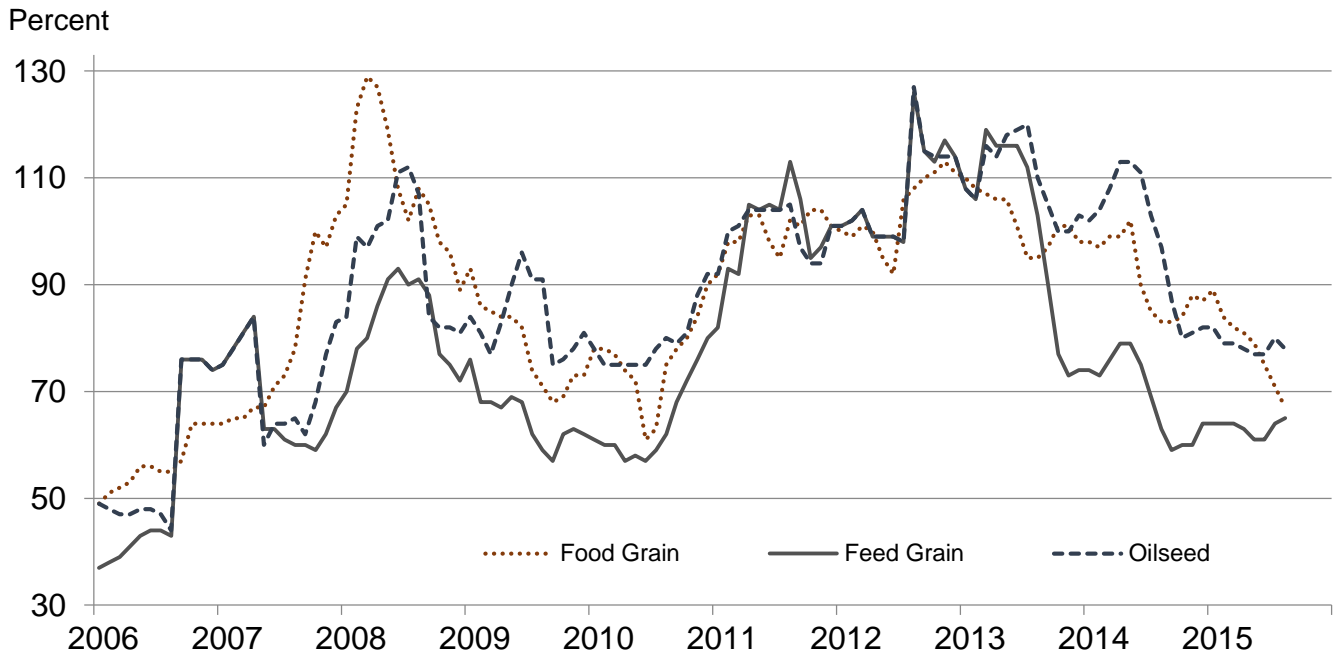
Percent



**Received Indexes by Month,  
Livestock Product, All Product, and All Crop –  
United States: 2011=100**

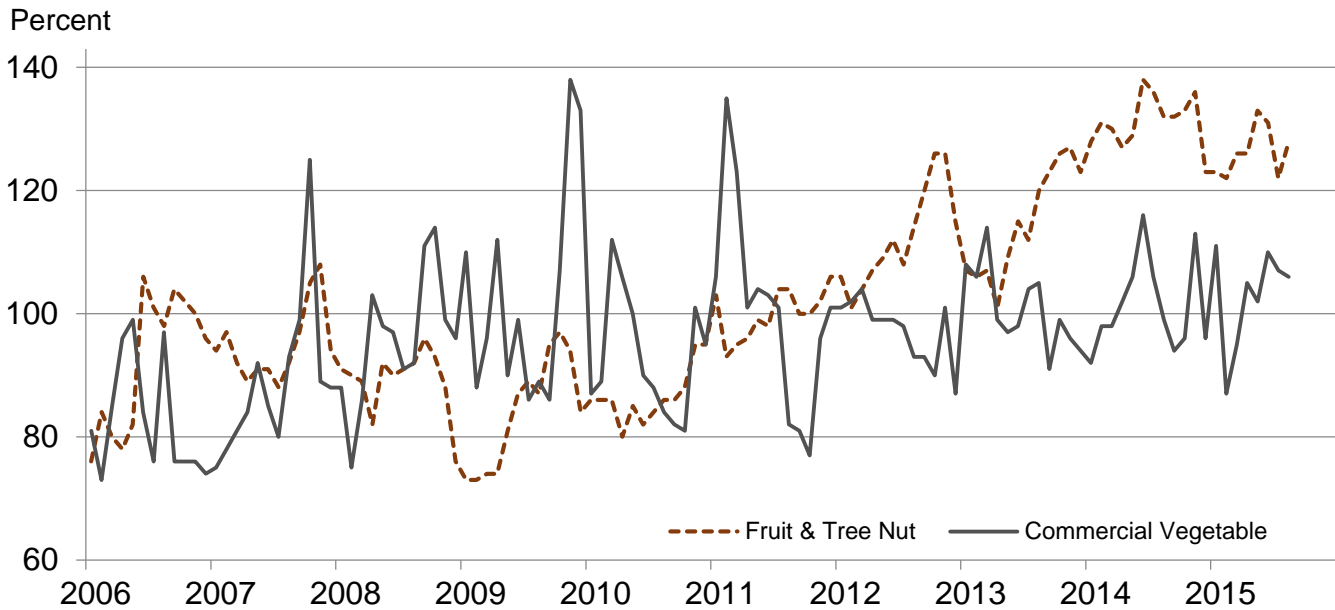


**Received Indexes by Month,  
Food Grain, Feed Grain, and Oilseed –  
United States: 2011=100**

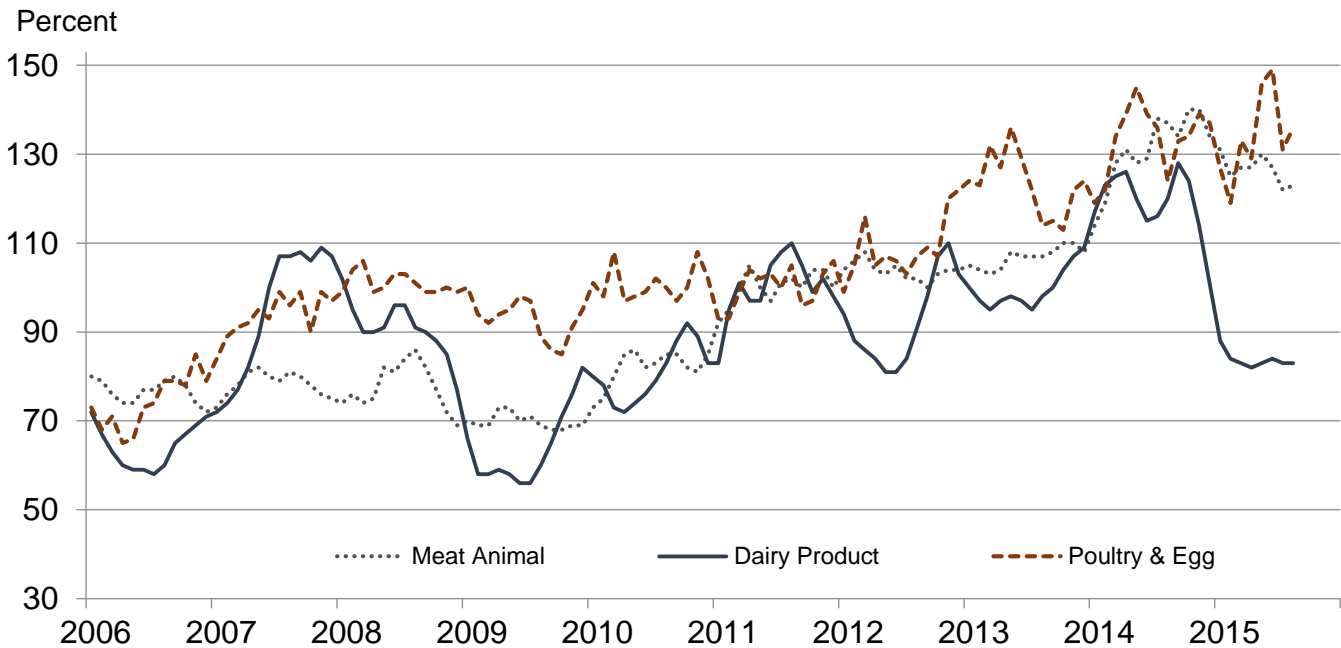




**Received Indexes by Month,  
Fruit & Tree Nut and Commercial Vegetable –  
United States: 2011=100**



**Received Indexes by Month,  
Meat Animal, Dairy Product, and Poultry & Egg –  
United States: 2011=100**



**Prices Received for Field Crops and Fruits – United States: August 2015 with Comparisons**

Commodity	2011 Base Price	August 2014	July 2015	August 2015	
<b>Field crops</b>					
Austrian winter peas .....	dollars/cwt	19.50	23.10	(D)	(D)
Barley, all .....	dollars/bushel	4.79	5.60	5.19	5.59
Feed .....	dollars/bushel	4.59	3.31	2.98	3.00
Malting .....	dollars/bushel	4.83	6.11	5.72	5.90
Beans, dry edible .....	dollars/cwt	34.60	35.90	27.50	29.00
Canola .....	dollars/cwt	23.10	17.80	18.10	15.60
Chickpeas, all .....	dollars/cwt	35.70	32.70	29.90	28.60
Large .....	dollars/cwt	39.20	33.30	30.60	29.30
Small .....	dollars/cwt	23.40	(D)	22.00	20.70
Corn .....	dollars/bushel	6.02	3.63	3.80	3.68
Cotton, Upland .....	dollars/pound	0.880	0.705	0.661	0.580
Cottonseed .....	dollars/ton	131.00	182.00	(NA)	192.00
Flaxseed .....	dollars/bushel	14.20	13.30	11.50	10.00
Hay, all, baled .....	dollars/ton	159.00	181.00	156.00	145.00
Alfalfa .....	dollars/ton	176.00	207.00	169.00	159.00
Other .....	dollars/ton	119.00	132.00	129.00	115.00
Lentils .....	dollars/cwt	27.50	20.00	30.10	25.80
Oats .....	dollars/bushel	3.42	3.24	2.33	2.08
Peanuts, in-shell .....	dollars/pound	0.252	0.221	0.230	0.219
Peas, dry edible .....	dollars/cwt	13.60	11.00	11.30	10.60
Potatoes .....	dollars/cwt	9.78	8.88	9.04	8.54
Rice, all .....	dollars/cwt	13.70	15.60	11.20	11.50
Long .....	dollars/cwt	12.30	14.30	9.96	10.40
Medium and short .....	dollars/cwt	18.40	20.30	16.60	17.20
Sorghum grain .....	dollars/cwt	10.70	7.13	7.68	7.90
Soybeans .....	dollars/bushel	12.50	12.40	9.95	9.71
Sunflowers, all .....	dollars/cwt	29.00	22.40	26.40	24.10
Wheat, all .....	dollars/bushel	7.44	5.97	5.23	4.85
Winter .....	dollars/bushel	6.93	5.90	5.15	4.82
Durum .....	dollars/bushel	9.22	8.03	8.74	7.30
Other spring .....	dollars/bushel	8.33	5.93	5.15	4.72
Hard red winter .....	dollars/bushel	7.07	6.03	5.21	4.57
Soft red winter .....	dollars/bushel	6.77	5.13	4.69	4.54
Hard red spring .....	dollars/bushel	8.38	5.89	5.13	4.69
White .....	dollars/bushel	6.58	6.40	6.34	6.00
<b>Fruits</b>					
Citrus, equivalent on-tree					
Grapefruit .....	dollars/box	7.47	8.05	9.33	5.71
Lemons .....	dollars/box	12.30	33.68	37.34	34.95
Oranges .....	dollars/box	8.16	14.78	10.79	12.24
Tangelos .....	dollars/box	3.50	(S)	(S)	(S)
Tangerines and mandarins .....	dollars/box	15.30	(S)	(S)	(S)
Noncitrus, fresh					
Apples <sup>1</sup> .....	dollars/pound	0.325	0.388	0.184	0.307
Grapes <sup>1</sup> .....	dollars/ton	628.00	1,360.00	1,340.00	1,470.00
Peaches <sup>1</sup> .....	dollars/ton	507.00	1,070.00	933.00	1,010.00
Pears <sup>1</sup> .....	dollars/ton	559.00	531.00	706.00	700.00
Strawberries .....	dollars/cwt	104.00	92.70	60.20	86.70

(D) Withheld to avoid disclosing data for individual operations.

(NA) Not available.

(S) Insufficient number of reports to establish an estimate.

<sup>1</sup> Equivalent packinghouse-door returns for California, Michigan, New York (apples only), and Washington (apples, peaches, and pears). Prices as sold for other states.

# Prices Received for Vegetables and Livestock – United States: August 2015 with Comparisons

[Price data source for livestock and poultry commodities is United States Department of Agriculture's Agricultural Marketing Service]

Commodity	2011 Base Price	August 2014	July 2015	August 2015
<b>Vegetables, fresh <sup>1</sup></b>				
Asparagus ..... dollars/cwt	37.50	(NA)	(S)	(NA)
Beans, snap <sup>2</sup> ..... dollars/cwt	69.00	77.20	(D)	(D)
Broccoli ..... dollars/cwt	41.60	47.10	38.20	49.90
Cantaloupes <sup>2</sup> ..... dollars/cwt	16.50	21.70	26.20	25.70
Carrots ..... dollars/cwt	30.80	23.00	29.90	30.20
Cauliflower ..... dollars/cwt	47.00	31.80	31.10	42.80
Celery ..... dollars/cwt	22.50	18.70	17.10	23.50
Corn, sweet ..... dollars/cwt	30.70	29.00	33.70	29.50
Cucumbers <sup>2</sup> ..... dollars/cwt	18.70	29.90	25.30	28.90
Lettuce ..... dollars/cwt	24.30	29.60	18.80	35.70
Onions <sup>3</sup> ..... dollars/cwt	11.90	14.50	31.90	15.60
Tomatoes ..... dollars/cwt	51.20	33.20	41.30	36.30
<b>Livestock</b>				
Calves ..... dollars/cwt	142.00	271.00	275.00	273.00
Cattle, all beef ..... dollars/cwt	115.00	158.00	149.00	148.00
Cows <sup>4</sup> ..... dollars/cwt	71.60	121.00	113.00	110.00
Steers and heifers ..... dollars/cwt	117.00	159.00	150.00	149.00
Milk cows <sup>5 6</sup> ..... dollars/head	1420.00	1970.00	1970.00	2030.00
Hogs, all ..... dollars/cwt	66.50	83.20	58.70	59.00
Barrows and gilts ..... dollars/cwt	66.80	82.90	59.50	59.30
Sows ..... dollars/cwt	57.90	91.60	40.00	50.70
<b>Dairy and poultry</b>				
Milk, all <sup>7</sup> ..... dollars/cwt	20.10	24.20	16.60	16.70
Fat test ..... percent	3.71	3.64	3.60	3.63
Broilers, live <sup>8</sup> ..... dollars/pound	0.459	0.600	0.510	0.470
Eggs, all <sup>9</sup> ..... dollars/dozen	0.969	1.08	1.90	2.39
Market <sup>9 10</sup> ..... dollars/dozen	0.796	0.861	1.81	2.38
Turkeys, live <sup>11</sup> ..... dollars/pound	0.680	0.756	0.848	0.897
<b>Adjusted for seasonal variation</b>				
Eggs, all ..... dollars/dozen	0.979	1.07	1.97	2.39
Seasonal factor ..... percent	101	101	97	100
Milk, all <sup>7</sup> ..... dollars/cwt	20.20	24.40	17.40	16.90
Seasonal factor ..... percent	100	99	96	99

(D) Withheld to avoid disclosing data for individual operations.

(NA) Not available.

(S) Insufficient number of reports to establish an estimate.

<sup>1</sup> Beginning January 2006, point of first sale. FOB shipping point for prior years.

<sup>2</sup> Monthly estimates began January 1995.

<sup>3</sup> Includes some processing.

<sup>4</sup> Beef cows and cull dairy cows sold for slaughter.

<sup>5</sup> Animals sold for dairy herd replacement only. Prices available for January, April, July, and October.

<sup>6</sup> Milk cow prices are for July 2014, April 2015, and July 2015.

<sup>7</sup> Before deductions for hauling. Includes quality, quantity, and other premiums. Excludes hauling subsidies.

<sup>8</sup> Live weight equivalent price.

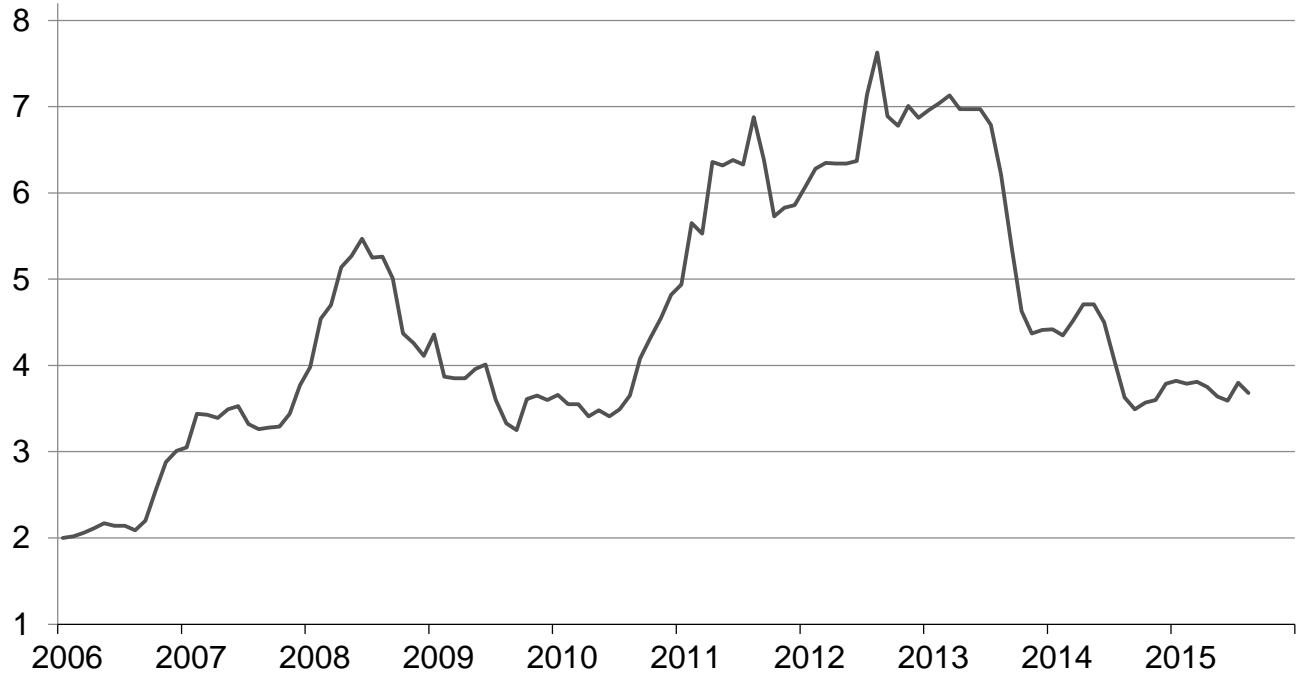
<sup>9</sup> Mid-month price.

<sup>10</sup> Also referred to as table eggs.

<sup>11</sup> Live weight equivalent price is used when actual live weight price is not available. Beginning January 2011, price reflects FOB shipping point basis. Prior year price reflects delivered basis.

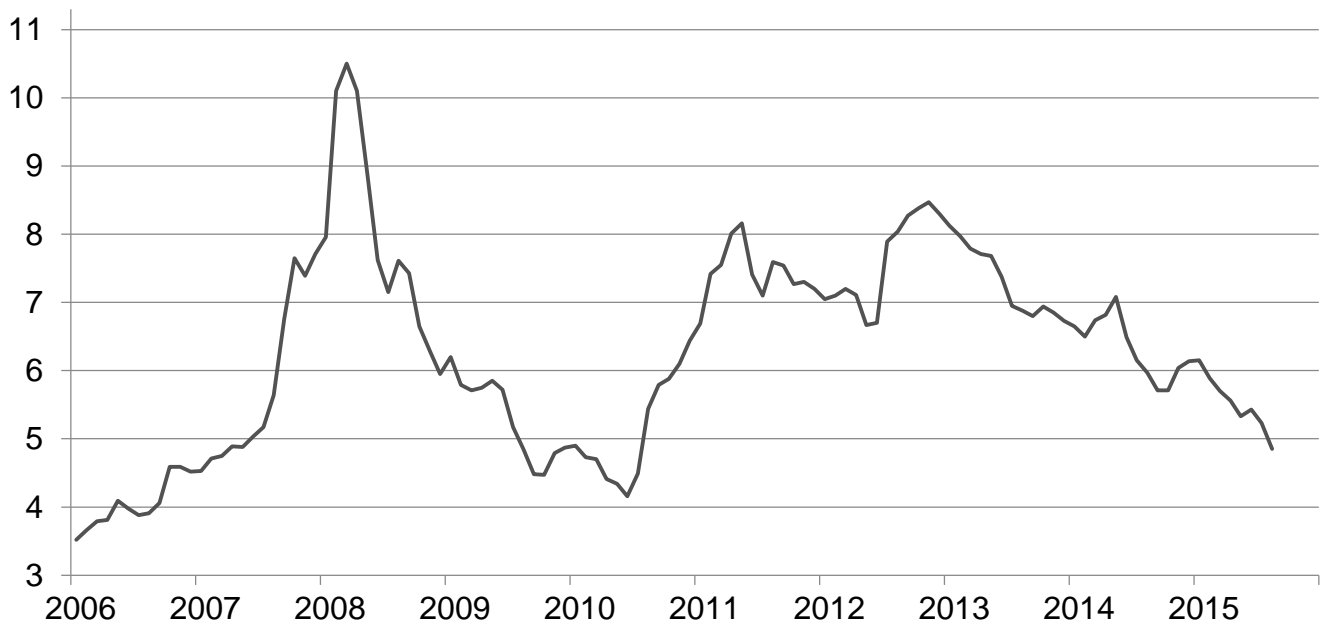
## Prices Received for Corn by Month – United States

Dollars per bushel



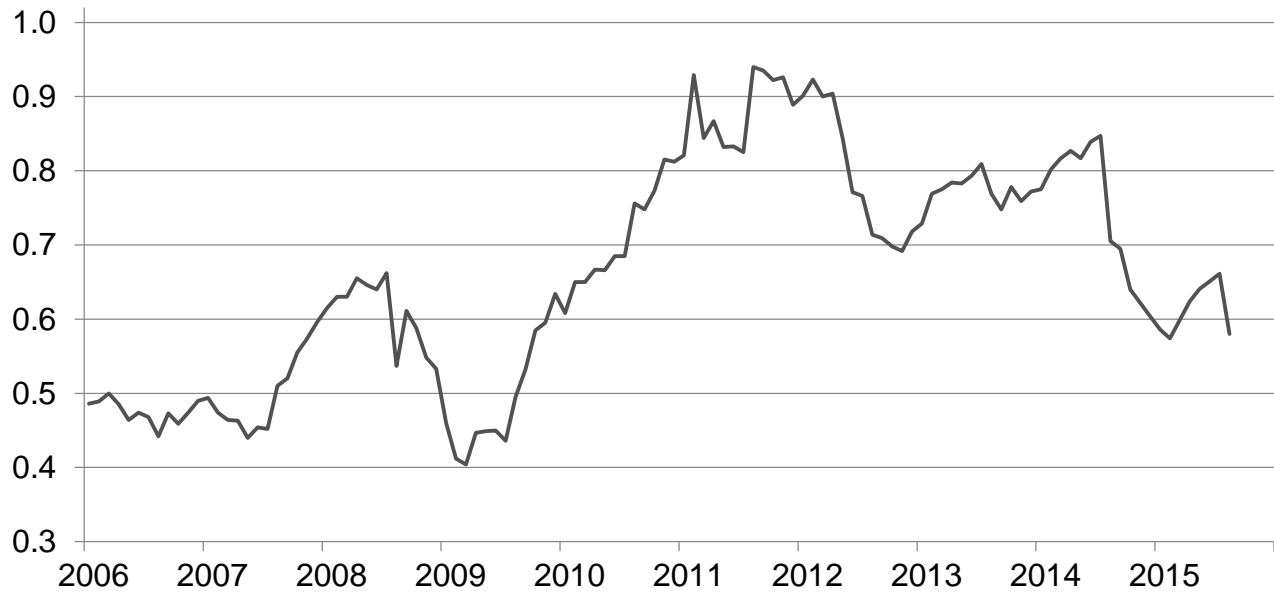
## Prices Received for Wheat by Month – United States

Dollars per bushel



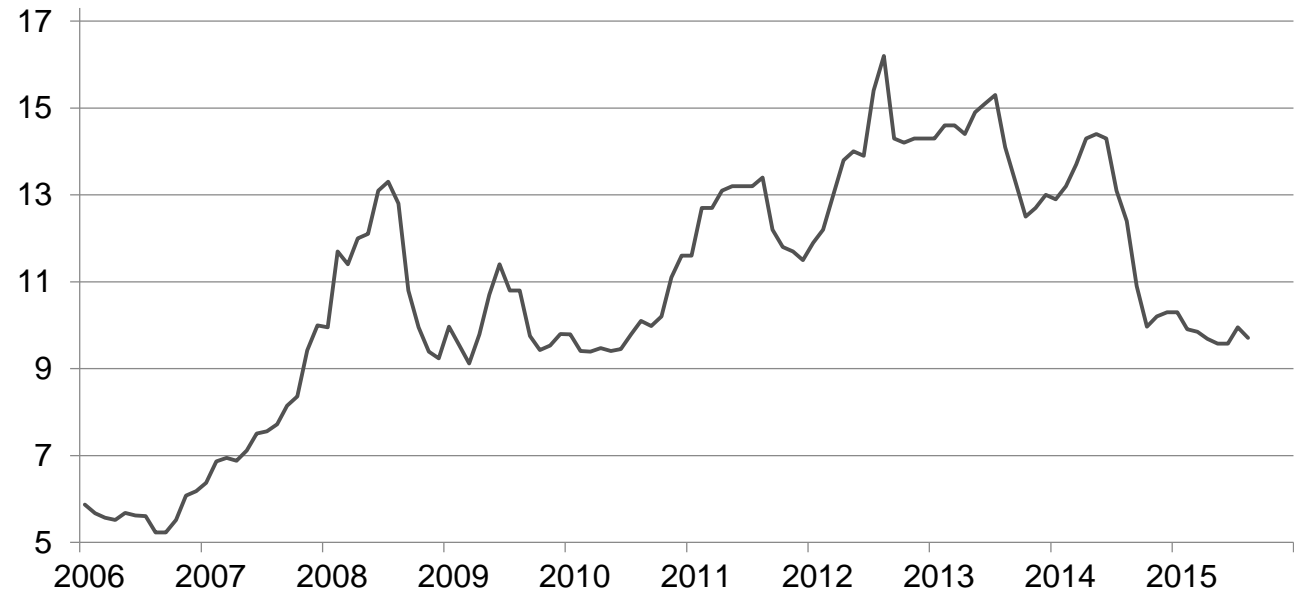
## Prices Received for Upland Cotton by Month – United States

Dollars per pound



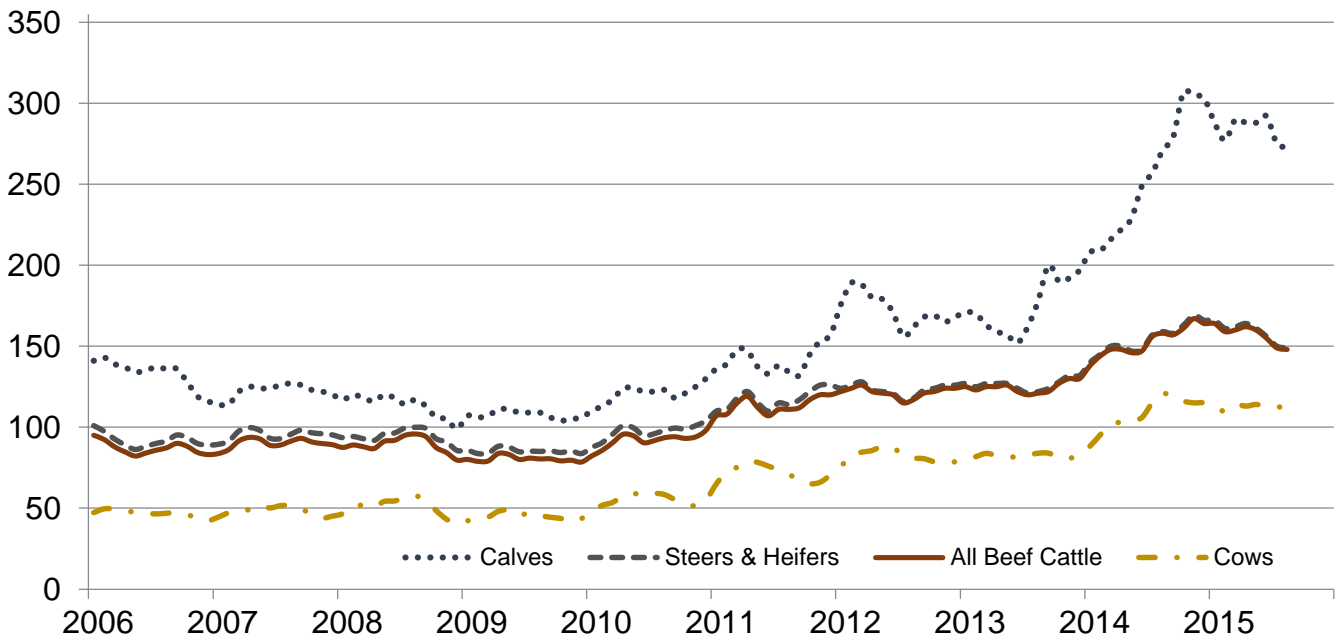
## Prices Received for Soybeans by Month – United States

Dollars per bushel



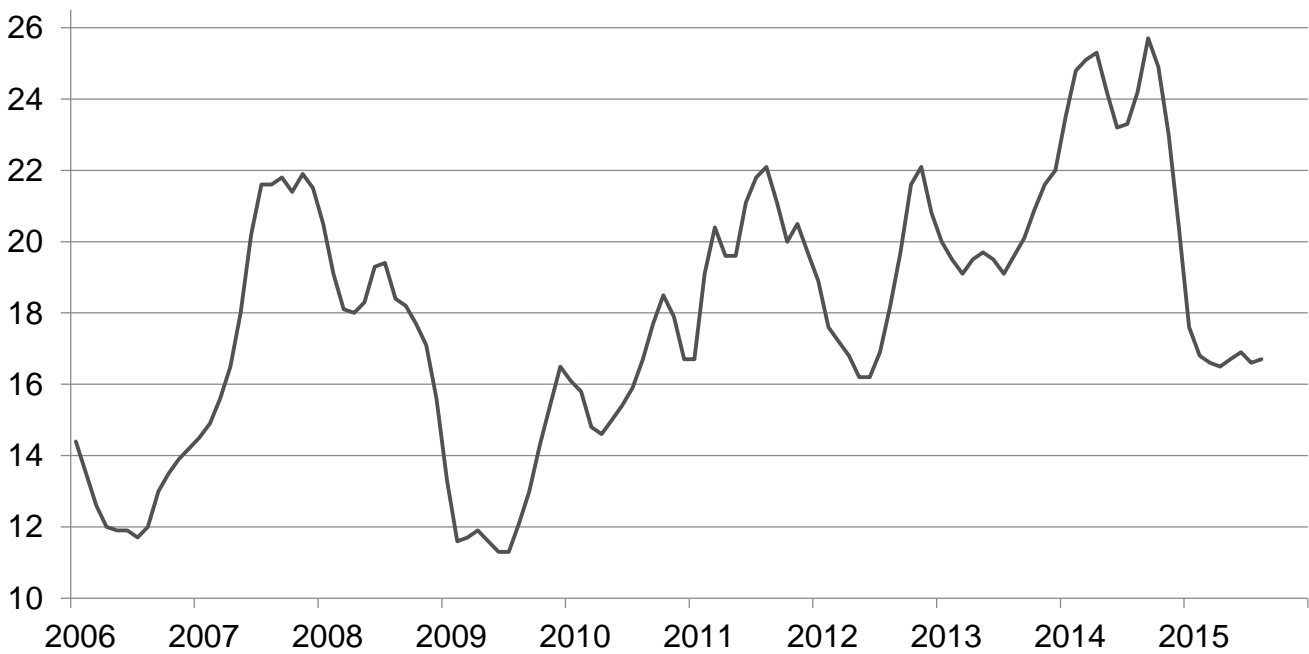
## Prices Received for Cattle by Month – United States

Dollars per cwt



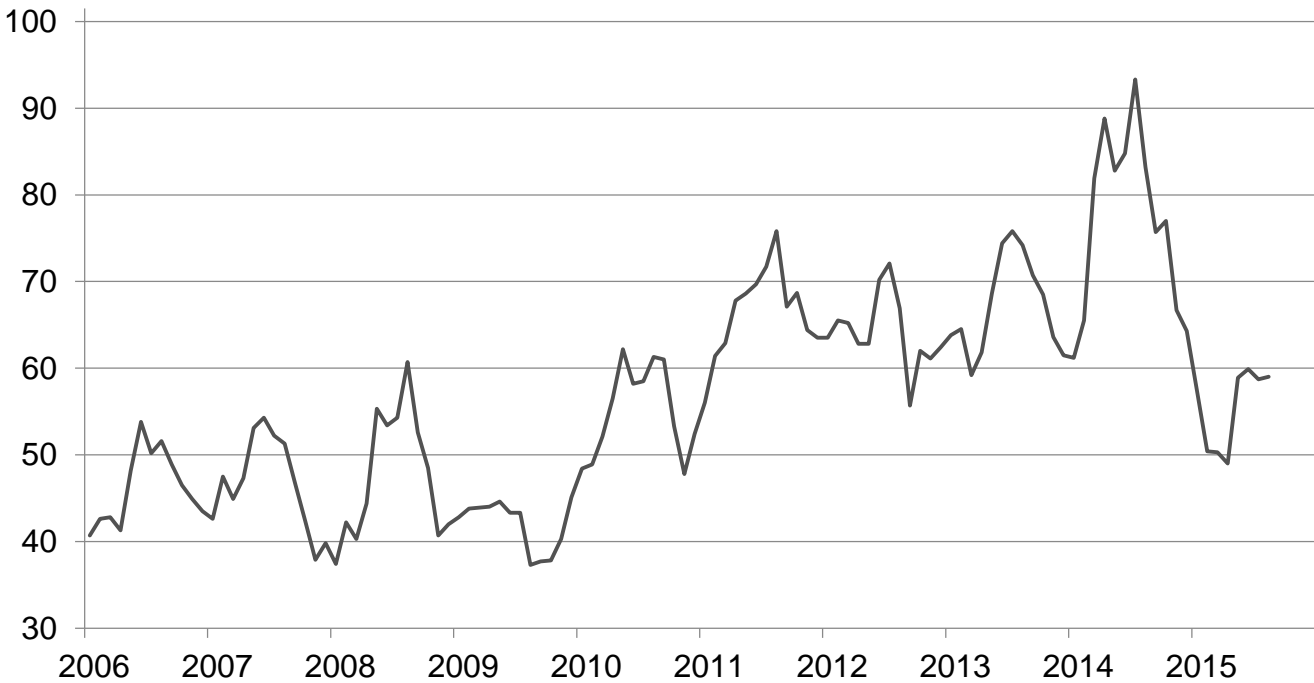
## Prices Received for Milk by Month – United States

Dollars per cwt



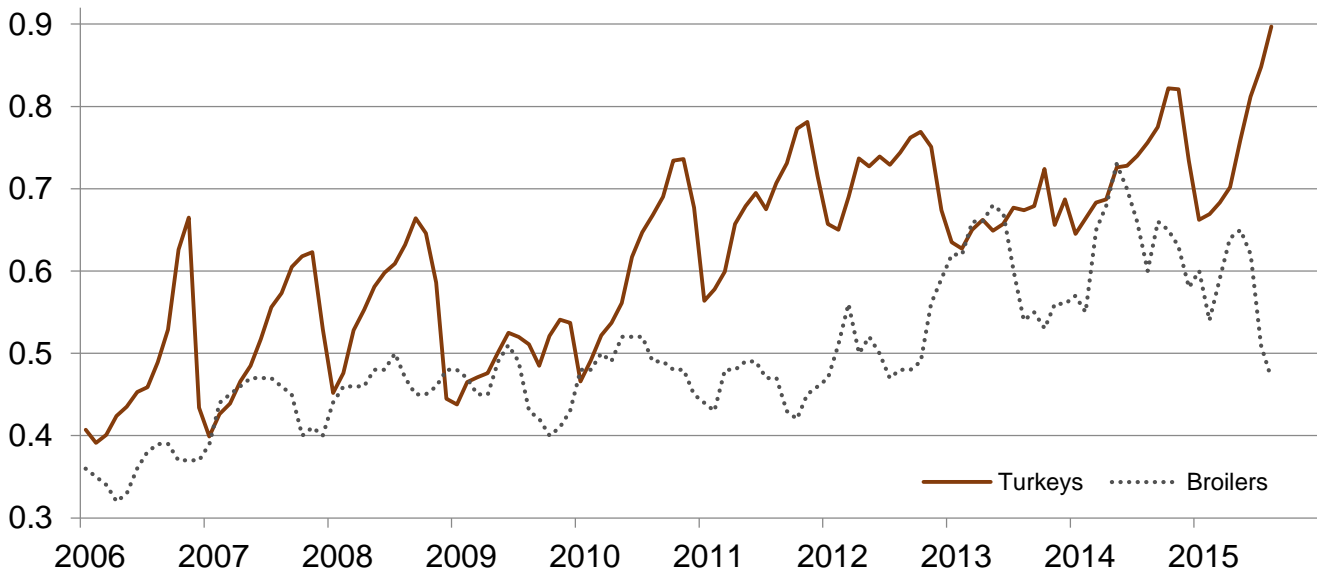
## Prices Received for Hogs by Month – United States

Dollars per cwt



## Prices Received for Poultry by Month – United States

Dollars per pound



## Prices Received for All Wheat, Corn, and Soybeans by Month – United States: 2015 with Comparisons

[Blank data cells indicate estimation period has not yet begun]

Month	All wheat			Corn			Soybeans		
	2013	2014	2015	2013	2014	2015	2013	2014	2015
	(dollars per bushel)	(dollars per bushel)	(dollars per bushel)	(dollars per bushel)	(dollars per bushel)	(dollars per bushel)	(dollars per bushel)	(dollars per bushel)	(dollars per bushel)
January .....	8.12	6.65	6.15	6.96	4.42	3.82	14.30	12.90	10.30
February .....	7.97	6.50	5.89	7.04	4.35	3.79	14.60	13.20	9.91
March .....	7.79	6.74	5.70	7.13	4.52	3.81	14.60	13.70	9.85
April .....	7.71	6.82	5.56	6.97	4.71	3.75	14.40	14.30	9.69
May .....	7.68	7.08	5.33	6.97	4.71	3.64	14.90	14.40	9.58
June .....	7.37	6.49	5.43	6.97	4.50	3.59	15.10	14.30	9.58
July .....	6.95	6.15	5.23	6.79	4.06	3.80	15.30	13.10	9.95
August .....	6.88	5.97	4.85	6.21	3.63	3.68	14.10	12.40	9.71
September .....	6.80	5.71		5.40	3.49		13.30	10.90	
October .....	6.94	5.71		4.63	3.57		12.50	9.97	
November .....	6.85	6.04		4.37	3.60		12.70	10.20	
December .....	6.73	6.14		4.41	3.79		13.00	10.30	

## Prices Received for Beef Cattle and All Hogs by Month – United States: 2015 with Comparisons

[Blank data cells indicate estimation period has not yet begun]

Month	Beef cattle <sup>1</sup>			All hogs <sup>2</sup>		
	2013	2014	2015	2013	2014	2015
	(dollars per cwt)	(dollars per cwt)	(dollars per cwt)	(dollars per cwt)	(dollars per cwt)	(dollars per cwt)
January .....	125.00	138.00	164.00	63.80	61.20	57.40
February .....	123.00	144.00	159.00	64.50	65.50	50.40
March .....	125.00	148.00	160.00	59.20	81.90	50.30
April .....	125.00	148.00	162.00	61.80	88.80	49.00
May .....	126.00	146.00	160.00	68.60	82.80	58.90
June .....	122.00	147.00	155.00	74.40	84.80	59.90
July .....	120.00	156.00	149.00	75.80	93.30	58.70
August .....	121.00	158.00	148.00	74.20	83.20	59.00
September .....	122.00	157.00		70.70	75.70	
October .....	127.00	161.00		68.50	77.00	
November .....	130.00	167.00		63.60	66.70	
December .....	130.00	164.00		61.50	64.30	

<sup>1</sup> Cows and steers & heifers.

<sup>2</sup> Barrows & gilts and sows.



### Prices Received for All Wheat – States and United States: August 2015 with Comparisons

State	August 2014	July 2015	August 2015
	(dollars per bushel)	(dollars per bushel)	(dollars per bushel)
Arizona .....	(D)	(D)	(D)
Arkansas .....	4.97	5.13	4.67
California .....	(D)	(D)	(D)
Colorado .....	6.05	5.16	4.34
Idaho .....	6.28	5.70	(D)
Illinois .....	4.70	3.71	3.18
Indiana .....	4.88	4.91	4.61
Kansas .....	6.07	5.26	4.55
Michigan .....	5.71	5.72	5.67
Minnesota .....	5.84	5.21	4.73
Missouri .....	5.30	4.34	4.21
Montana .....	6.22	5.31	4.91
Nebraska .....	5.82	5.17	4.40
North Carolina .....	4.84	5.19	4.85
North Dakota .....	6.03	5.12	4.71
Ohio .....	5.52	4.80	4.47
Oklahoma .....	6.36	5.30	4.67
Oregon .....	6.93	6.20	5.63
South Dakota .....	5.65	5.12	4.72
Texas .....	6.11	5.01	4.35
Washington .....	6.64	6.25	6.00
United States .....	5.97	5.23	4.85

(D) Withheld to avoid disclosing data for individual operations.

### Prices Received for Winter Wheat – States and United States: August 2015 with Comparisons

State	August 2014	July 2015	August 2015
	(dollars per bushel)	(dollars per bushel)	(dollars per bushel)
Arkansas .....	4.97	5.13	4.67
California .....	(D)	(D)	(D)
Colorado .....	6.06	5.16	4.34
Idaho .....	6.25	5.67	5.69
Illinois .....	4.70	3.71	3.18
Indiana .....	4.88	4.91	4.61
Kansas .....	6.07	5.26	4.55
Michigan .....	5.71	5.72	5.67
Minnesota .....	5.05	4.50	4.12
Missouri .....	5.30	4.34	4.21
Montana .....	6.18	5.21	4.80
Nebraska .....	5.82	5.17	4.40
North Carolina .....	4.84	5.19	4.85
North Dakota .....	5.04	3.85	3.69
Ohio .....	5.52	4.80	4.47
Oklahoma .....	6.36	5.30	4.67
Oregon .....	6.90	6.03	5.62
South Dakota .....	5.63	4.80	4.64
Texas .....	6.11	5.01	4.35
Washington .....	6.54	6.21	6.00
United States .....	5.90	5.15	4.82

(D) Withheld to avoid disclosing data for individual operations.

### Prices Received for Durum Wheat – States and United States: August 2015 with Comparisons

State	August 2014	July 2015	August 2015
	(dollars per bushel)	(dollars per bushel)	(dollars per bushel)
Arizona .....	(D)	(D)	(D)
California .....	(S)	(D)	(S)
Idaho .....	(S)	(S)	(D)
Montana .....	7.74	(D)	(D)
North Dakota .....	7.91	7.78	7.00
United States .....	8.03	8.74	7.30

(D) Withheld to avoid disclosing data for individual operations.

(S) Insufficient number of reports to establish an estimate.

### Prices Received for Spring Wheat – States and United States: August 2015 with Comparisons

State	August 2014	July 2015	August 2015
	(dollars per bushel)	(dollars per bushel)	(dollars per bushel)
Colorado .....	(D)	(D)	(D)
Idaho .....	6.35	5.88	(D)
Minnesota .....	5.85	5.22	4.75
Montana .....	6.06	5.22	4.69
North Dakota .....	5.68	4.97	4.55
Oregon .....	7.10	6.90	5.69
South Dakota .....	5.66	5.39	4.75
Washington .....	7.12	6.53	6.01
United States .....	5.93	5.15	4.72

(D) Withheld to avoid disclosing data for individual operations.

### Prices Received for Oats – States and United States: August 2015 with Comparisons

State	August 2014	July 2015	August 2015
	(dollars per bushel)	(dollars per bushel)	(dollars per bushel)
Illinois .....	(D)	(D)	2.31
Iowa .....	3.47	2.55	2.50
Michigan .....	3.55	2.66	1.91
Minnesota .....	3.33	2.21	2.01
Montana .....	(S)	(S)	(S)
Nebraska .....	3.00	1.99	2.45
New York .....	(D)	(D)	2.41
North Dakota .....	2.33	2.07	1.87
Oregon .....	(D)	(S)	(S)
Pennsylvania .....	3.68	(D)	3.56
South Dakota .....	2.98	2.34	2.20
Texas .....	(S)	(S)	(S)
Wisconsin .....	3.47	2.22	1.79
United States .....	3.24	2.33	2.08

(D) Withheld to avoid disclosing data for individual operations.

(S) Insufficient number of reports to establish an estimate.

### Prices Received for All Barley – States and United States: August 2015 with Comparisons

State	August 2014	July 2015	August 2015
	(dollars per bushel)	(dollars per bushel)	(dollars per bushel)
California .....	6.86	(D)	(D)
Colorado .....	4.73	(D)	5.98
Idaho .....	5.48	5.33	5.99
Minnesota .....	5.71	5.37	5.57
Montana .....	6.02	5.31	5.78
North Dakota .....	5.32	4.85	4.79
Oregon .....	(D)	(D)	3.34
Utah .....	3.55	2.84	(D)
Washington .....	3.55	3.61	3.65
Wyoming .....	(D)	(D)	6.03
United States .....	5.60	5.19	5.59

(D) Withheld to avoid disclosing data for individual operations.

### Prices Received for Malting Barley – States: August 2015 with Comparisons

State	August 2014	July 2015	August 2015
	(dollars per bushel)	(dollars per bushel)	(dollars per bushel)
Idaho .....	6.09	6.02	6.20
Minnesota .....	(D)	5.31	5.56
Montana .....	6.17	6.10	6.14
North Dakota .....	5.95	5.14	5.05
Wyoming .....	(D)	(D)	6.13
United States .....	6.11	5.72	5.90

(D) Withheld to avoid disclosing data for individual operations.

### Prices Received for Feed Barley – States: August 2015 with Comparisons

State	August 2014	July 2015	August 2015
	(dollars per bushel)	(dollars per bushel)	(dollars per bushel)
Idaho .....	3.62	2.97	2.92
Minnesota .....	4.81	(D)	(D)
Montana .....	2.60	2.62	2.76
North Dakota .....	3.08	3.16	2.46
Wyoming .....	(D)	(D)	(D)
United States .....	3.31	2.98	3.00

(D) Withheld to avoid disclosing data for individual operations.

### Prices Received for Sorghum Grain – States and United States: August 2015 with Comparisons

State	August 2014	July 2015	August 2015
	(dollars per cwt)	(dollars per cwt)	(dollars per cwt)
Arkansas .....	7.22	(D)	7.93
Illinois .....	(D)	(D)	(S)
Kansas .....	5.71	7.78	6.84
Louisiana .....	7.92	(D)	8.02
Missouri .....	7.16	(D)	6.97
Nebraska .....	6.11	7.23	6.91
Oklahoma .....	5.95	7.65	6.38
Texas .....	7.13	7.67	7.96
United States .....	7.13	7.68	7.90

(D) Withheld to avoid disclosing data for individual operations.

(S) Insufficient number of reports to establish an estimate.

**Prices Received for Corn – States and United States: August 2015 with Comparisons**

State	August 2014	July 2015	August 2015
	(dollars per bushel)	(dollars per bushel)	(dollars per bushel)
Colorado .....	4.33	4.07	3.82
Illinois .....	3.74	3.85	3.63
Indiana .....	3.88	4.03	3.90
Iowa .....	3.61	3.78	3.67
Kansas .....	3.63	4.04	3.80
Kentucky .....	4.10	4.12	4.06
Michigan .....	3.55	3.88	3.69
Minnesota .....	3.46	3.65	3.46
Missouri .....	3.75	3.84	3.70
Nebraska .....	3.68	3.82	3.72
North Carolina .....	4.54	4.68	4.31
North Dakota .....	3.35	3.40	3.29
Ohio .....	3.62	4.02	3.94
Pennsylvania .....	3.97	4.01	4.08
South Dakota .....	3.13	3.53	3.38
Tennessee .....	3.96	4.03	3.94
Texas .....	3.67	4.48	4.26
Wisconsin .....	3.80	3.78	3.67
United States .....	3.63	3.80	3.68

**Prices Received for Soybeans – States and United States: August 2015 with Comparisons**

State	August 2014	July 2015	August 2015
	(dollars per bushel)	(dollars per bushel)	(dollars per bushel)
Arkansas .....	12.40	10.00	9.80
Illinois .....	12.50	10.20	9.77
Indiana .....	12.90	10.30	10.00
Iowa .....	12.40	10.00	9.49
Kansas .....	13.10	9.79	9.29
Kentucky .....	12.70	10.20	9.95
Louisiana .....	11.90	10.40	9.96
Michigan .....	12.40	10.20	10.40
Minnesota .....	12.60	9.74	9.65
Mississippi .....	11.90	(D)	10.10
Missouri .....	12.50	10.10	9.80
Nebraska .....	12.00	9.62	9.37
North Carolina .....	13.10	10.10	9.39
North Dakota .....	10.70	9.02	8.93
Ohio .....	13.10	10.30	10.20
South Dakota .....	11.80	9.32	9.12
Tennessee .....	11.90	10.20	9.84
Wisconsin .....	12.50	9.79	9.57
United States .....	12.40	9.95	9.71

(D) Withheld to avoid disclosing data for individual operations.

### Prices Received for Dry Beans – States and United States: August 2015 with Comparisons

State	August 2014	July 2015	August 2015
	(dollars per cwt)	(dollars per cwt)	(dollars per cwt)
California .....	(D)	68.90	59.00
Colorado .....	33.10	27.30	22.30
Idaho .....	33.20	(D)	28.70
Michigan .....	(D)	(D)	(D)
Minnesota .....	(S)	26.10	23.60
Nebraska .....	30.70	(D)	20.60
North Dakota .....	25.80	22.00	23.00
United States .....	35.90	27.50	29.00

(D) Withheld to avoid disclosing data for individual operations.

(S) Insufficient number of reports to establish an estimate.

### Prices Received for Peanuts (in shell) – States and United States: August 2015 with Comparisons

State	August 2014	July 2015	August 2015
	(dollars per pound)	(dollars per pound)	(dollars per pound)
Alabama .....	0.224	0.211	0.212
Florida .....	0.235	(D)	0.176
Georgia .....	0.204	0.215	0.207
Mississippi .....	0.195	(D)	(S)
New Mexico .....	(S)	(D)	(S)
North Carolina .....	(S)	0.265	(D)
Oklahoma .....	(S)	(D)	0.264
South Carolina .....	0.226	0.250	0.235
Texas .....	0.290	0.288	0.200
Virginia .....	(S)	(D)	(S)
United States .....	0.221	0.230	0.219

(D) Withheld to avoid disclosing data for individual operations.

(S) Insufficient number of reports to establish an estimate.

### Prices Received for Sunflower – States and United States: August 2015 with Comparisons

State	August 2014	July 2015	August 2015
	(dollars per cwt)	(dollars per cwt)	(dollars per cwt)
Colorado .....	(D)	(S)	(S)
Kansas .....	(D)	(D)	(D)
Minnesota .....	(D)	26.30	25.10
North Dakota .....	24.40	28.40	26.90
South Dakota .....	16.80	19.40	(D)
United States .....	22.40	26.40	24.10

(D) Withheld to avoid disclosing data for individual operations.

(S) Insufficient number of reports to establish an estimate.

### Prices Received for Canola – States and United States: August 2015 with Comparisons

State	August 2014	July 2015	August 2015
	(dollars per cwt)	(dollars per cwt)	(dollars per cwt)
Minnesota .....	(D)	(D)	(D)
North Dakota .....	17.80	18.10	15.60
United States .....	17.80	18.10	15.60

(D) Withheld to avoid disclosing data for individual operations.

## Prices Received for Flaxseed – States and United States: August 2015 with Comparisons

State	August 2014	July 2015	August 2015
	(dollars per bushel)	(dollars per bushel)	(dollars per bushel)
North Dakota .....	13.30	11.50	10.00
United States .....	13.30	11.50	10.00

## Prices Received for Upland Cotton and Cottonseed – States and United States: August 2015 with Comparisons

[Cottonseed marketing year August - February]

State	Cotton, Upland			Cottonseed		
	August 2014	July 2015	August 2015	August 2014	July 2015	August 2015
	(dollars per pound)	(dollars per pound)	(dollars per pound)	(dollars per ton)	(dollars per ton)	(dollars per ton)
Alabama .....	(S)	(D)	(D)	(NA)	(NA)	(NA)
Arizona .....	(S)	(D)	(S)	(NA)	(NA)	(NA)
Arkansas .....	(S)	(D)	(S)	(NA)	(NA)	(NA)
California .....	(S)	(D)	(D)	(NA)	(NA)	(NA)
Georgia .....	(S)	0.673	(D)	(NA)	(NA)	(NA)
Louisiana .....	(S)	(D)	(S)	(NA)	(NA)	(NA)
Mississippi .....	(S)	(D)	(S)	(NA)	(NA)	(NA)
North Carolina .....	(S)	(D)	(D)	(NA)	(NA)	(NA)
Tennessee .....	(S)	0.654	(D)	(NA)	(NA)	(NA)
Texas .....	0.705	0.597	(D)	182.00	(NA)	192.00
United States .....	0.705	0.661	0.580	182.00	(NA)	192.00

(D) Withheld to avoid disclosing data for individual operations.

(NA) Not available.

(S) Insufficient number of reports to establish an estimate.

## Prices Received and Farm Marketings for Upland Cotton and Rice – United States: August 2015 with Comparisons

Item	August 2014	July 2015	August 2015
Cotton, Upland			
Average price ..... dollars/pound	0.705	0.661	0.580
Marketings <sup>1</sup> ..... 1,000 bales	80	205	571
Rice, all			
Average price ..... dollars/cwt	15.60	11.20	11.50
Marketings <sup>2</sup> ..... 1,000 cwt	9,679	16,537	10,448
Rice, long			
Average price ..... dollars/cwt	14.30	9.96	10.40
Marketings <sup>2</sup> ..... 1,000 cwt	7,615	13,485	8,645
Rice, medium and short			
California			
Average price ..... dollars/cwt	21.10	21.00	20.40
Other States <sup>3</sup>			
Average price ..... dollars/cwt	15.60	12.90	12.90
United States			
Average price ..... dollars/cwt	20.30	16.60	17.20
Marketings <sup>2</sup> ..... 1,000 cwt	2,064	3,052	1,803

<sup>1</sup> Marketings based on a survey of cotton buyers in the major producing States - Alabama, Arizona, Arkansas, California, Georgia, Louisiana, Mississippi, North Carolina, Tennessee, and Texas.

<sup>2</sup> Purchases by private firms and rice (rough equivalent) shipped by cooperatives.

<sup>3</sup> Other States include Arkansas, Louisiana, Mississippi, Missouri, and Texas.

## Prices Received for Hay by Type – States and United States: August 2015 with Comparisons

State	All hay			Alfalfa hay			Other hay		
	August 2014	July 2015	August 2015	August 2014	July 2015	August 2015	August 2014	July 2015	August 2015
	(dollars per ton)	(dollars per ton)	(dollars per ton)	(dollars per ton)	(dollars per ton)	(dollars per ton)	(dollars per ton)	(dollars per ton)	(dollars per ton)
Arizona .....	236.00	150.00	140.00	240.00	150.00	140.00	205.00	165.00	180.00
California .....	231.00	179.00	157.00	245.00	185.00	165.00	190.00	160.00	135.00
Colorado .....	209.00	190.00	191.00	210.00	190.00	190.00	200.00	195.00	195.00
Idaho .....	199.00	184.00	164.00	200.00	185.00	165.00	180.00	170.00	150.00
Illinois .....	147.00	130.00	141.00	175.00	150.00	160.00	100.00	100.00	105.00
Iowa .....	141.00	104.00	109.00	148.00	115.00	115.00	100.00	85.00	85.00
Kansas .....	166.00	114.00	109.00	191.00	122.00	122.00	99.00	94.00	78.00
Kentucky .....	125.00	132.00	139.00	190.00	210.00	210.00	90.00	105.00	105.00
Michigan .....	141.00	146.00	149.00	160.00	150.00	170.00	115.00	140.00	120.00
Minnesota .....	109.00	83.00	67.00	125.00	96.00	76.00	88.00	69.00	57.00
Missouri .....	82.00	91.00	90.00	170.00	165.00	165.00	70.00	80.00	80.00
Montana .....	128.00	129.00	133.00	130.00	130.00	135.00	120.00	125.00	125.00
Nebraska .....	104.00	90.00	89.00	112.00	92.00	92.00	87.00	86.00	84.00
Nevada .....	258.00	185.00	163.00	260.00	180.00	160.00	225.00	250.00	215.00
New Mexico .....	259.00	206.00	206.00	270.00	215.00	215.00	190.00	160.00	160.00
New York .....	178.00	167.00	158.00	205.00	190.00	166.00	174.00	160.00	156.00
North Dakota .....	86.00	84.00	83.00	92.00	89.00	87.00	60.00	63.00	60.00
Ohio .....	141.00	149.00	145.00	175.00	190.00	190.00	115.00	125.00	105.00
Oklahoma .....	100.00	112.00	101.00	217.00	160.00	153.00	83.00	78.00	67.00
Oregon .....	228.00	210.00	190.00	230.00	220.00	200.00	225.00	200.00	180.00
Pennsylvania .....	177.00	233.00	195.00	187.00	240.00	205.00	174.00	231.00	192.00
South Dakota .....	115.00	101.00	101.00	121.00	103.00	106.00	89.00	88.00	85.00
Texas .....	113.00	109.00	98.00	246.00	210.00	205.00	77.00	65.00	59.00
Utah .....	204.00	165.00	160.00	205.00	165.00	160.00	165.00	135.00	130.00
Washington .....	227.00	188.00	183.00	220.00	185.00	180.00	240.00	195.00	190.00
Wisconsin .....	133.00	84.00	91.00	140.00	88.00	104.00	100.00	74.00	54.00
Wyoming .....	155.00	116.00	116.00	160.00	120.00	120.00	140.00	105.00	105.00
United States ...	181.00	156.00	145.00	207.00	169.00	159.00	132.00	129.00	115.00

## Prices Received for Apples – States and United States: August 2015 with Comparisons

[Equivalent packinghouse-door returns for California, Michigan, New York, Pennsylvania, and Washington. Prices at point of first sale for other States]

State	Apples, fresh use		
	August 2014	July 2015	August 2015
	(dollars per pound)	(dollars per pound)	(dollars per pound)
California .....	0.537	0.536	0.495
Michigan .....	(S)	(S)	(S)
New York .....	(S)	0.280	(S)
Pennsylvania .....	(S)	(S)	0.300
Virginia .....	0.320	(S)	0.300
Washington .....	0.367	0.178	0.288
United States .....	0.388	0.184	0.307

(S) Insufficient number of reports to establish an estimate.

## Prices Received for Citrus Fruits by Utilization – States and United States: August 2014

[Net pounds per box: grapefruit in California-80, Florida-85, Texas-80; lemons-80; oranges in California-80, Florida-90, Texas-85; tangelos-90; tangerines and mandarins in Arizona and California-80, Florida-95]

Commodity, State, and type	FOB packed fresh	Equivalent returns					
		Packinghouse door			On-tree		
		All	Fresh	Process	All	Fresh	Process
	(dollars per box)	(dollars per box)	(dollars per box)	(dollars per box)	(dollars per box)	(dollars per box)	(dollars per box)
<b>Grapefruit</b>							
California <sup>1</sup> .....	(D)	9.75	(D)	(D)	8.05	(D)	(D)
Florida, all .....	(S)	(S)	(S)	(S)	(S)	(S)	(S)
White .....	(S)	(S)	(S)	(S)	(S)	(S)	(S)
Colored .....	(S)	(S)	(S)	(S)	(S)	(S)	(S)
Texas .....	(S)	(S)	(S)	(S)	(S)	(S)	(S)
United States .....	(D)	9.75	(D)	(D)	8.05	(D)	(D)
<b>Lemons</b>							
Arizona .....	(S)	(S)	(S)	(S)	(S)	(S)	(S)
California .....	59.40	39.54	49.95	(D)	33.68	43.81	(D)
United States .....	59.40	39.54	49.95	(D)	33.68	43.81	(D)
<b>Oranges</b>							
California, all .....	29.40	17.37	20.23	(D)	14.78	17.67	(D)
Navel and miscellaneous .....	(S)	(S)	(S)	(S)	(S)	(S)	(S)
Valencia .....	29.40	17.37	20.23	(D)	14.78	17.67	(D)
Florida, all .....	(S)	(S)	(S)	(S)	(S)	(S)	(S)
Early and mids .....	(S)	(S)	(S)	(S)	(S)	(S)	(S)
Valencia .....	(S)	(S)	(S)	(S)	(S)	(S)	(S)
United States .....	29.40	17.37	20.23	(D)	14.78	17.67	(D)
<b>Tangelos</b>							
Florida .....	(S)	(S)	(S)	(S)	(S)	(S)	(S)
United States .....	(S)	(S)	(S)	(S)	(S)	(S)	(S)
<b>Tangerines and mandarins</b>							
Arizona .....	(S)	(S)	(S)	(S)	(S)	(S)	(S)
California .....	(S)	(S)	(S)	(S)	(S)	(S)	(S)
Florida .....	(S)	(S)	(S)	(S)	(S)	(S)	(S)
United States .....	(S)	(S)	(S)	(S)	(S)	(S)	(S)

(D) Withheld to avoid disclosing data for individual operations.

(S) Insufficient number of reports to establish an estimate.

<sup>1</sup> Some processed sales included in fresh sales.



## Prices Received for Citrus Fruits by Utilization – States and United States: July 2015

[Net pounds per box: grapefruit in California-80, Florida-85, Texas-80; lemons-80; oranges in California-80, Florida-90, Texas-85; tangelos-90; tangerines and mandarins in Arizona and California-80, Florida-95]

Commodity, State, and type	FOB packed fresh	Equivalent returns					
		Packinghouse door			On-tree		
		All	Fresh	Process	All	Fresh	Process
	(dollars per box)	(dollars per box)	(dollars per box)	(dollars per box)	(dollars per box)	(dollars per box)	(dollars per box)
<b>Grapefruit</b>							
California <sup>1</sup> .....	(D)	11.82	(D)	(D)	9.33	(D)	(D)
Florida, all .....	(S)	(S)	(S)	(S)	(S)	(S)	(S)
White .....	(S)	(S)	(S)	(S)	(S)	(S)	(S)
Colored .....	(S)	(S)	(S)	(S)	(S)	(S)	(S)
Texas .....	(S)	(S)	(S)	(S)	(S)	(S)	(S)
United States .....	(D)	11.82	(D)	(D)	9.33	(D)	(D)
<b>Lemons</b>							
Arizona .....	(S)	(S)	(S)	(S)	(S)	(S)	(S)
California .....	60.50	43.28	51.05	(D)	37.34	44.91	(D)
United States .....	60.50	43.28	51.05	(D)	37.34	44.91	(D)
<b>Oranges</b>							
California, all .....	26.20	13.14	16.81	(D)	10.48	14.20	(D)
Navel and miscellaneous .....	(S)	(S)	(S)	(S)	(S)	(S)	(S)
Valencia .....	26.20	13.16	16.85	(D)	10.49	14.24	(D)
Florida, all .....	(S)	(S)	(S)	(S)	(S)	(S)	(S)
Early and mids .....	(S)	(S)	(S)	(S)	(S)	(S)	(S)
Valencia .....	(S)	(S)	(S)	(S)	(S)	(S)	(S)
United States .....	26.30	13.48	16.61	(D)	10.79	13.98	(D)
<b>Tangelos</b>							
Florida .....	(S)	(S)	(S)	(S)	(S)	(S)	(S)
United States .....	(S)	(S)	(S)	(S)	(S)	(S)	(S)
<b>Tangerines and mandarins</b>							
Arizona .....	(S)	(S)	(S)	(S)	(S)	(S)	(S)
California .....	(S)	(S)	(S)	(S)	(S)	(S)	(S)
Florida .....	(S)	(S)	(S)	(S)	(S)	(S)	(S)
United States .....	(S)	(S)	(S)	(S)	(S)	(S)	(S)

(D) Withheld to avoid disclosing data for individual operations.

(S) Insufficient number of reports to establish an estimate.

<sup>1</sup> Some processed sales included in fresh sales.

## Prices Received for Citrus Fruits by Utilization – States and United States: August 2015

[Net pounds per box: grapefruit in California-80, Florida-85, Texas-80; lemons-80; oranges in California-80, Florida-90, Texas-85; tangelos-90; tangerines and mandarins in Arizona and California-80, Florida-95]

Commodity, State, and type	FOB packed fresh	Equivalent returns					
		Packinghouse door			On-tree		
		All	Fresh	Process	All	Fresh	Process
	(dollars per box)	(dollars per box)	(dollars per box)	(dollars per box)	(dollars per box)	(dollars per box)	(dollars per box)
<b>Grapefruit</b>							
California <sup>1</sup> .....	(D)	8.56	(D)	(D)	5.71	(D)	(D)
Florida, all .....	(S)	(S)	(S)	(S)	(S)	(S)	(S)
White .....	(S)	(S)	(S)	(S)	(S)	(S)	(S)
Colored .....	(S)	(S)	(S)	(S)	(S)	(S)	(S)
Texas .....	(S)	(S)	(S)	(S)	(S)	(S)	(S)
United States .....	(D)	8.56	(D)	(D)	5.71	(D)	(D)
<b>Lemons</b>							
Arizona .....	(S)	(S)	(S)	(S)	(S)	(S)	(S)
California .....	55.30	41.07	45.66	(D)	34.95	39.40	(D)
United States .....	55.30	41.07	45.66	(D)	34.95	39.40	(D)
<b>Oranges</b>							
California, all .....	28.30	14.90	18.95	(D)	12.24	16.34	(D)
Navel and miscellaneous .....	(S)	(S)	(S)	(S)	(S)	(S)	(S)
Valencia .....	28.30	14.90	18.95	(D)	12.24	16.34	(D)
Florida, all .....	(S)	(S)	(S)	(S)	(S)	(S)	(S)
Early and mids .....	(S)	(S)	(S)	(S)	(S)	(S)	(S)
Valencia .....	(S)	(S)	(S)	(S)	(S)	(S)	(S)
United States .....	28.30	14.90	18.95	(D)	12.24	16.34	(D)
<b>Tangelos</b>							
Florida .....	(S)	(S)	(S)	(S)	(S)	(S)	(S)
United States .....	(S)	(S)	(S)	(S)	(S)	(S)	(S)
<b>Tangerines and mandarins</b>							
Arizona .....	(S)	(S)	(S)	(S)	(S)	(S)	(S)
California .....	(S)	(S)	(S)	(S)	(S)	(S)	(S)
Florida .....	(S)	(S)	(S)	(S)	(S)	(S)	(S)
United States .....	(S)	(S)	(S)	(S)	(S)	(S)	(S)

(D) Withheld to avoid disclosing data for individual operations.

(S) Insufficient number of reports to establish an estimate.

<sup>1</sup> Some processed sales included in fresh sales.

## Prices Received for Potatoes – States and United States: August 2015 with Comparisons

State	August 2014	July 2015	August 2015
	(dollars per cwt)	(dollars per cwt)	(dollars per cwt)
California, all <sup>1</sup> .....	13.00	16.90	14.30
Spring .....	13.00	16.90	14.30
Fall .....	(S)	(S)	(S)
Colorado, all <sup>1</sup> .....	8.50	4.75	4.65
Fresh <sup>2</sup> .....	10.50	5.40	6.30
Florida .....	(S)	12.50	(S)
Idaho, all <sup>1</sup> .....	6.60	7.00	6.70
Fresh <sup>2</sup> .....	(D)	4.70	5.70
Processing .....	(D)	8.50	7.70
Maine .....	(D)	(D)	(D)
Michigan .....	(D)	(S)	(D)
Minnesota .....	10.90	(S)	10.70
New York .....	(D)	(S)	(D)
North Carolina .....	(S)	10.00	(S)
North Dakota, all <sup>1</sup> .....	(S)	(D)	(D)
Fresh <sup>2</sup> .....	(D)	(D)	(S)
Processing .....	(D)	(D)	(D)
Oregon .....	7.60	8.15	6.90
Texas .....	(D)	(D)	(D)
Virginia .....	(D)	13.60	12.70
Washington, all <sup>1</sup> .....	7.40	8.10	7.50
Processing .....	(D)	8.10	7.05
Wisconsin, all <sup>1</sup> .....	10.50	(S)	10.40
Fresh <sup>2</sup> .....	11.00	(S)	11.00
Processing .....	10.00	(S)	9.90
United States, all <sup>1</sup> .....	8.88	9.04	8.54
Fresh <sup>2</sup> .....	11.47	9.79	11.12
Processing .....	8.08	8.83	7.65

(D) Withheld to avoid disclosing data for individual operations.

(S) Insufficient number of reports to establish an estimate.

<sup>1</sup> Average price of potatoes sold for all uses, including table stock, processing, seed, and livestock feed.

<sup>2</sup> Fresh market prices only. Includes table stock prices.

## Prices Received for All Milk – States and United States: August 2015 with Comparisons

[Before deduction for hauling. Includes quality, quantity, and other premiums. Excludes hauling subsidies]

State	August 2014		July 2015		August 2015	
	Price	Fat test	Price	Fat test	Price	Fat test
	(dollars per cwt)	(percent)	(dollars per cwt)	(percent)	(dollars per cwt)	(percent)
Arizona .....	24.00	3.43	15.60	3.37	15.60	3.39
California .....	22.60	3.61	15.12	3.59	15.23	3.63
Colorado .....	24.10	3.44	17.20	3.44	17.30	3.46
Florida .....	29.20	3.58	21.40	3.60	21.00	3.61
Idaho .....	23.20	3.64	16.30	3.62	16.50	3.71
Illinois .....	24.80	3.65	17.40	3.60	17.40	3.61
Indiana .....	24.70	3.60	16.40	3.57	16.30	3.60
Iowa .....	24.70	3.60	17.00	3.64	17.30	3.65
Kansas .....	23.60	3.47	16.00	3.51	16.30	3.51
Michigan .....	24.40	3.61	15.90	3.52	16.00	3.54
Minnesota .....	24.60	3.77	17.40	3.72	17.60	3.76
New Mexico .....	21.90	3.44	15.90	3.43	15.40	3.40
New York .....	26.20	3.67	17.40	3.65	17.40	3.64
Ohio .....	24.90	3.67	17.10	3.60	17.10	3.61
Oregon .....	25.70	3.81	18.00	3.74	18.20	3.77
Pennsylvania .....	26.50	3.64	17.60	3.58	17.60	3.59
South Dakota .....	24.70	3.84	18.10	3.85	18.20	3.88
Texas .....	24.30	3.72	17.20	3.71	16.90	3.72
Utah .....	23.80	3.59	16.70	3.54	16.70	3.63
Vermont .....	26.20	3.71	17.60	3.72	17.60	3.71
Virginia .....	27.90	3.57	19.10	3.54	19.30	3.56
Washington .....	25.30	3.81	16.10	3.74	16.00	3.77
Wisconsin .....	24.30	3.68	17.50	3.61	17.50	3.64
United States .....	24.20	3.64	16.60	3.60	16.70	3.63

## Prices Received for Milk Cows – States and United States: July 2015 with Comparisons

[Animals sold for dairy herd replacement only. Quarterly United States milk cow prices are based on revised milk cow inventory]

State	July 2014	April 2015	July 2015
	(dollars per head)	(dollars per head)	(dollars per head)
Arizona .....	2,100.00	2,000.00	2,100.00
California .....	2,000.00	2,000.00	2,200.00
Colorado .....	2,200.00	2,100.00	2,100.00
Florida .....	1,900.00	2,100.00	2,100.00
Idaho .....	2,000.00	1,900.00	2,000.00
Illinois .....	1,860.00	2,000.00	2,000.00
Indiana .....	1,850.00	1,900.00	1,950.00
Iowa .....	1,990.00	1,950.00	2,050.00
Kansas .....	2,050.00	1,950.00	2,000.00
Michigan .....	1,950.00	2,100.00	2,100.00
Minnesota .....	1,950.00	1,860.00	1,880.00
New Mexico .....	1,950.00	2,000.00	2,000.00
New York .....	1,800.00	1,820.00	1,890.00
Ohio .....	1,800.00	1,850.00	1,850.00
Oregon .....	1,900.00	2,000.00	2,000.00
Pennsylvania .....	1,880.00	1,890.00	1,890.00
South Dakota .....	1,950.00	1,840.00	1,900.00
Texas .....	2,000.00	2,000.00	2,000.00
Utah .....	1,850.00	1,900.00	2,000.00
Vermont .....	1,880.00	1,880.00	1,940.00
Virginia .....	1,890.00	1,930.00	1,950.00
Washington .....	1,950.00	1,850.00	1,950.00
Wisconsin .....	2,100.00	2,080.00	2,090.00
United States .....	1,970.00	1,970.00	2,030.00

## Parity Price Overview

Parity prices, based on data from January 2015, and adjusted base price data from which parity prices are computed are presented in the tables on the following pages. Parity prices are computed under the provisions of Title III, Subtitle A, Section 301(a) of the Agricultural Adjustment Act of 1938 as amended by the Agricultural Acts of 1948, 1949, 1954, and 1956.

The parity prices shown in this report are based on the provisions of the amended Act. Briefly, the actual method of computation is as follows:

- a. The average of prices received by farmers for individual commodities for the 10 preceding years is calculated (for 2015, the 10-average includes the years 2005-2014). An allowance for unredeemed loans and other supplemental payments resulting from price support programs, such as the deficiency payments for grains and cotton, is included for those commodities for which applicable.
- b. This 10-year average is divided by the average of the Index of Prices Received by Farmers for the same 10 preceding calendar years, adjusted to include an allowance for unredeemed loans and other supplemental price support operations, to give an "adjusted base price".
- c. Parity prices are computed by multiplying the "adjusted base prices" by the current Parity Index (the Index of Prices Paid by Farmers, including Interest, Taxes, and Wage Rates, 1910-1914=100).

Parity prices are calculated in terms of prices received by farmers in the local markets in which they ordinarily sell. This means that the parity prices apply to the average of all classes and grades of the commodity as sold by all farmers in the United States, except as otherwise specified. Fruits and vegetables for fresh use and for processing are usually considered separate commodities and separate parity prices are calculated. The Agricultural Marketing Agreement Act of 1937 provided for parity prices for certain commodities covered by a marketing agreement or order program. Under present legislation, United States parity prices, with appropriate adjustments where needed, may be used for the purpose of this Act.

## Commodity Parity Prices and Price as Percent of Parity Price – United States: August 2015 with Comparisons

[Parity prices are computed under the provisions of Title III, Subtitle a, Section 301 (a) of the Agricultural Adjustment Act of 1938 as amended by the Agricultural Acts of 1948, 1949, and 1956. See January *Agricultural Prices* for details on adjusted base price and parity price computations. Parity data not available for blank cells. Primary source of data for livestock and milk prices is United States Department of Agriculture's Agricultural Marketing Service]

Commodity and unit	Adjusted base price	Parity price			Price as percent of parity		
		August 2014	July 2015	August 2015	August 2014	July 2015	August 2015
	(dollars)	(dollars)	(dollars)	(dollars)	(percent)	(percent)	(percent)
<b>Basic commodities</b>							
All wheat .....bushel	0.624	18.50	18.40	18.30	32	28	27
Rice .....cwt	1.34	39.70	39.50	39.30	39	28	29
Corn .....bushel	0.444	13.30	13.10	13.00	27	29	28
<b>Cotton</b>							
Upland .....pound	0.066	1.98	1.95	1.93	36	34	30
American Pima .....pound	0.136	4.12	4.01	3.98	42	39	39
Peanuts .....pound	0.024	0.721	0.708	0.703	31	32	31
Small chickpeas <sup>1</sup> .....cwt	2.200	(NA)	64.90	64.50	(NA)	34	32
Large chickpeas <sup>1</sup> .....cwt	3.330	(NA)	98.30	97.60	(NA)	31	30
Lentils <sup>1</sup> .....cwt	2.280	(NA)	67.30	66.80	(NA)	45	39
<b>Designated nonbasic</b>							
All milk, to plants <sup>2</sup> .....cwt	1.83	54.40	54.00	53.60	45	32	32
Honey, extracted <sup>3</sup> .....pound	0.150	4.42	4.43	4.40	48	48	48
<b>Wool and mohair</b>							
Wool .....pound	0.117	3.43	3.45	3.43	42	42	43
Mohair .....pound	0.378	10.80	11.20	11.10	39	43	44
<b>Other nonbasic</b>							
Apples, fresh <sup>4</sup> .....pound	0.033	1.020	0.974	0.967	38	19	32
Barley .....bushel	0.467	13.60	13.80	13.70	41	38	41
Canola .....cwt	1.880	56.20	55.50	55.10	32	33	28
Cottonseed .....ton	19.20	574.00	567.00	563.00	32	35	34
Dry edible beans .....cwt	3.25	96.20	95.90	95.20	37	29	30
Flaxseed .....bushel	1.170	34.60	34.50	34.30	38	33	29
Oats .....bushel	0.295	8.53	8.71	8.64	38	27	24
Potatoes .....cwt	0.846	25.10	25.00	24.80	35	36	34
Sorghum grain .....cwt	0.757	22.50	22.30	22.20	32	34	36
Soybeans .....bushel	1.080	31.90	31.90	31.60	39	31	31
Sunflower, all .....cwt	2.13	63.70	62.90	62.40	35	42	39
<b>Citrus (equivalent on-tree)</b>							
Grapefruit .....box	0.777	21.80	22.90	22.80	37	41	41
Lemons .....box	1.49	40.90	44.00	43.70	82	88	80
Oranges .....box	0.806	23.10	23.80	23.60	64	45	46
Tangerines .....box	1.75	48.40	51.60	51.30	146	48	48
<b>Livestock and poultry</b>							
Beef cattle .....cwt	10.80	313.00	319.00	316.00	50	47	47
Calves .....cwt	15.30	430.00	452.00	448.00	63	61	61
Hogs .....cwt	5.81	173.00	171.00	170.00	48	34	35
Eggs <sup>1</sup> .....dozen	0.094	2.76	2.77	2.75	39	71	87
Turkeys, live .....pound	0.061	1.800	1.800	1.790	42	47	50

(NA) Not available.

<sup>1</sup> Parity prices began January 2015.

<sup>2</sup> Seasonally adjusted price as percentage of parity price.

<sup>3</sup> Wholesale extracted. Adjusted base price derived from state annual averages prices weighted by production. For 1982 through 1985 the national averages are the support prices.

<sup>4</sup> Equivalent packinghouse-door returns for California, New York, Oregon, and Washington. Price at point of first sale for other states.

## Commodity Parity Prices – United States: August 2015 with Comparisons

[Parity prices are computed under the provisions of Title III, Subtitle a, Section 301 (a) of the Agricultural Adjustment Act of 1938 as amended by the Agricultural Acts of 1948, 1949, and 1956. See January *Agricultural Prices* for details on adjusted base price and parity price computations]

Commodity and unit	Adjusted base price	Parity price			
		August 2014	July 2015	August 2015	
	(dollars)	(dollars)	(dollars)	(dollars)	
<b>Field crops and miscellaneous</b>					
Hops .....	pound	0.325	9.56	9.59	9.52
Mustard seed .....	cwt	3.07	89.80	90.60	90.00
Rapeseed .....	cwt	2.43	68.80	71.70	71.20
Rye .....	bushel	0.614	17.50	18.10	18.00
Safflower .....	cwt	2.16	62.80	63.70	63.30
Spearmint oil .....	pound	1.64	48.10	48.40	48.10
Sweet potatoes .....	cwt	2.08	62.80	61.40	60.90
<b>Tobacco</b>					
Flue-cured, 11-14 .....	pound	0.181	5.56	5.34	5.30
Fire-cured, 21-23 .....	pound	0.259	7.99	7.64	7.59
Burley, 31 .....	pound	0.181	5.62	5.34	5.30
Maryland, 32 .....	pound	0.171	5.08	5.05	5.01
Dark air-cured, 35-37 .....	pound	0.234	7.21	6.91	6.86
Pennsylvania seedleaf, 41 .....	pound	0.181	5.47	5.34	5.30
Cigar binder, 51 .....	pound	0.632	19.10	18.70	18.50
<b>Noncitrus fruit</b>					
Apples, processing <sup>1 2</sup> .....	ton	18.10	544.00	534.00	530.00
Apricots					
Fresh <sup>3</sup> .....	ton	119.00	3,490.00	3,510.00	3,490.00
Dried (California) .....	ton	257.00	7,870.00	7,580.00	7,530.00
Avocados <sup>2 3</sup> .....	ton	183.00	5,560.00	5,400.00	5,360.00
Cherries					
Sweet .....	ton	215.00	6,490.00	6,340.00	6,300.00
Tart <sup>2</sup> .....	pound	0.033	0.992	0.974	0.967
Cranberry <sup>2 4</sup> .....	barrel	4.44	139.00	131.00	130.00
Dates (California) <sup>3</sup> .....	ton	152.00	4,870.00	4,490.00	4,450.00
Grapes (California)					
Raisin variety <sup>5</sup> .....	ton	144.00	4,270.00	4,250.00	4,220.00
Wine, processing .....	ton	66.60	(NA)	1,970.00	1,950.00
Kiwifruit <sup>2</sup> .....	ton	90.00	2,690.00	2,660.00	2,640.00
Nectarines, fresh (California) <sup>3</sup> .....	ton	60.90	1,730.00	1,800.00	1,780.00
Olives, canning (California) <sup>4</sup> .....	ton	95.60	2,820.00	2,820.00	2,800.00

See footnote(s) at end of table.

--continued

## Commodity Parity Prices – United States: August 2015 with Comparisons (continued)

[Parity prices are computed under the provisions of Title III, Subtitle a, Section 301 (a) of the Agricultural Adjustment Act of 1938 as amended by the Agricultural Acts of 1948, 1949, and 1956. See January *Agricultural Prices* for details on adjusted base price and parity price computations]

Commodity and unit	Adjusted base price	Parity price		
		August 2014	July 2015	August 2015
	(dollars)	(dollars)	(dollars)	(dollars)
Noncitrus fruit - continued				
Papayas (Hawaii) .....pound	0.041	1.26	1.21	1.20
Peaches				
Fresh <sup>4 6</sup> ..... ton	87.00	2,510.00	2,570.00	2,550.00
Dried (California) <sup>1 5</sup> ..... ton	46.50	1,440.00	1,370.00	1,360.00
Processing, excludes dried				
Clingstone (California) <sup>4</sup> ..... ton	33.50	992.00	989.00	982.00
Pears, Fresh <sup>6</sup> ..... ton	57.70	1,710.00	1,700.00	1,690.00
Plums (California) equivalent on-tree				
Fresh <sup>7</sup> ..... ton	62.30	1,810.00	1,840.00	1,830.00
Prunes, dried (California) <sup>1 2 5</sup> ..... ton	157.00	4,570.00	4,630.00	4,600.00
Prunes and plums				
Fresh, excludes California <sup>7</sup> ..... ton	62.90	1,890.00	1,860.00	1,840.00
Processing, excludes dried <sup>1</sup> ..... ton	23.90	736.00	705.00	700.00
Strawberries				
Fresh <sup>10</sup> .....pound	9.040	264.00	267.00	265.00
Processing .....pound	3.38	98.60	99.70	99.00
Sugar crops				
Sugarbeets <sup>2 8</sup> ..... ton	5.34	163.00	158.00	156.00
Sugarcane <sup>2 8</sup> ..... ton	3.55	106.00	105.00	104.00
Tree nuts <sup>9</sup>				
Almonds .....pound	0.236	6.82	6.96	6.91
Hazelnuts ..... ton	222.00	6,250.00	6,550.00	6,500.00
Pistachios .....pound	0.227	6.25	6.70	6.65
Walnuts ..... ton	223.00	6,100.00	6,580.00	6,530.00
Vegetables, fresh <sup>10</sup>				
Carrots <sup>11</sup> ..... cwt	2.63	79.90	77.60	77.10
Cauliflower <sup>11</sup> ..... cwt	4.17	124.00	123.00	122.00
Celery <sup>11</sup> ..... cwt	1.99	61.60	58.70	58.30
Honeydew melons ..... cwt	1.98	59.20	58.40	58.00
Lettuce ..... cwt	2.17	64.90	64.00	63.60
Onions <sup>11</sup> ..... cwt	1.41	40.30	41.60	41.30
Tomatoes ..... cwt	4.21	130.00	124.00	123.00

(NA) Not available.

<sup>1</sup> Equivalent returns at processing plant door.

<sup>2</sup> Adjusted base price is carried forward from the previous year since current marketing year average price is not yet available.

<sup>3</sup> Equivalent returns at packinghouse door.

<sup>4</sup> Equivalent returns for bulk fruit at first delivery point.

<sup>5</sup> Dried basis.

<sup>6</sup> Equivalent packinghouse-door returns for California, New York (apples only), Oregon (except peaches), and Washington. Price at point of first sale for other states.

<sup>7</sup> Based on "as sold" prices for fresh fruit in all states.

<sup>8</sup> Relates to prices including average conditional payments per ton made under the sugar acts of 1937 and 1948. Crop deficiency and abandonment payments not included.

<sup>9</sup> Prices In-Shell basis except almonds which are shelled basis.

<sup>10</sup> FOB shipping point price.

<sup>11</sup> Includes some processing.



## Marketing Year for Specified Commodities

**Austrian Winter Peas:** July 1 to June 30 for United States, Idaho, Montana, and Oregon.

**Dry Edible Peas:** July 1 to June 30 for United States, Idaho, Montana, North Dakota, Oregon, and Washington.

**Lentils:** July 1 to June 30 for United States, Idaho, Montana, North Dakota, and Washington.

**Corn for grain:** September 1 to August 31 for United States, Arizona, California, Delaware, Illinois, Indiana, Iowa, Kansas, Kentucky, Maryland, Missouri, Nebraska, New Mexico, Ohio, Pennsylvania, South Dakota, Virginia, and West Virginia; July 1 to June 30 for Texas; August 1 to July 31 for Alabama, Arkansas, Florida, Georgia, Louisiana, Mississippi, North Carolina, Oklahoma, South Carolina, and Tennessee; October 1 to September 30 for Colorado, Connecticut, Idaho, Maine, Massachusetts, Michigan, Minnesota, Montana, Nevada, New Hampshire, New Jersey, New York, North Dakota, Oregon, Rhode Island, Utah, Vermont, Washington, Wisconsin, and Wyoming.

**Sorghum for grain:** September 1 to August 31 for United States, Arizona, Colorado, Illinois, Kansas, Missouri, Nebraska, New Mexico, and South Dakota; June 1 to May 31 for Texas; August 1 to July 31 for Arkansas, Georgia, Louisiana, Mississippi, and Oklahoma.

**Soybeans:** September 1 to August 31 for United States and all States except Louisiana, Mississippi, and Texas; July 1 to June 30 for Texas; August 1 to July 31 for Louisiana and Mississippi.

**Austrian Winter Peas Market Year Average Prices Received – States and United States: Marketing Years 2012 through 2014**

State	2012	2013	2014
	(dollars)	(dollars)	(dollars)
Idaho .....	19.90	24.60	22.10
Montana .....	21.90	19.50	(D)
Oregon .....	20.40	27.70	28.80
United States .....	20.70	23.50	22.70

(D) Withheld to avoid disclosing data for individual operations.

**Dry Edible Peas Market Year Average Prices Received – States and United States: Marketing Years 2012 through 2014**

[Excludes both wrinkled seed peas and Austrian winter peas]

State	2012	2013	2014
	(dollars)	(dollars)	(dollars)
Idaho .....	17.50	17.40	14.50
Montana .....	14.60	13.50	11.00
North Dakota .....	15.90	14.80	12.20
Oregon .....	17.00	16.90	15.50
Washington .....	17.30	16.60	15.40
United States .....	15.70	14.60	12.00

**Lentils Market Year Average Prices Received – States and United States: Marketing Years 2012 through 2014**

State	2012	2013	2014
	(dollars)	(dollars)	(dollars)
Idaho .....	27.80	24.40	31.00
Montana .....	19.50	18.30	22.80
North Dakota .....	18.70	17.90	23.50
Washington .....	27.20	25.30	32.00
United States .....	20.70	19.80	24.40

**Sorghum Grain Market Year Average Prices Received – States and United States: Marketing Years 2012 through 2014**

State	2012	2013	2014
	(dollars per cwt)	(dollars per cwt)	(dollars per cwt)
Arizona .....	12.80	10.10	9.34
Arkansas .....	11.10	8.85	7.07
Colorado .....	12.50	7.66	6.92
Georgia .....	12.70	9.52	8.52
Illinois .....	12.00	7.42	5.97
Kansas .....	12.00	7.46	7.10
Louisiana .....	11.50	8.70	7.76
Mississippi .....	10.90	8.62	7.05
Missouri .....	12.30	8.05	6.35
Nebraska .....	12.10	7.38	7.17
New Mexico .....	13.30	5.76	6.64
Oklahoma .....	12.00	7.49	6.94
South Dakota .....	11.90	6.57	5.95
Texas .....	11.20	8.33	7.23
United States .....	11.30	7.64	7.20

**Soybean Market Year Average Prices Received – States and United States: Marketing Years 2012 through 2014**

State	2012	2013	2014
	(dollars per bushel)	(dollars per bushel)	(dollars per bushel)
Alabama .....	14.60	12.90	10.00
Arkansas .....	14.30	13.10	10.60
Delaware .....	14.40	12.40	9.60
Florida .....	14.00	11.80	8.90
Georgia .....	14.60	13.30	10.50
Illinois .....	14.60	13.20	10.20
Indiana .....	14.70	13.20	10.20
Iowa .....	14.40	13.10	9.96
Kansas .....	14.30	12.80	9.63
Kentucky .....	14.50	13.10	10.50
Louisiana .....	14.70	13.40	10.90
Maryland .....	14.20	12.40	9.82
Michigan .....	14.00	12.90	10.10
Minnesota .....	14.30	12.90	9.96
Mississippi .....	14.50	13.20	11.00
Missouri .....	14.50	13.10	9.99
Nebraska .....	14.10	12.70	9.73
New Jersey .....	13.90	12.40	9.85
New York .....	13.60	12.80	9.69
North Carolina .....	14.00	13.10	10.20
North Dakota .....	14.00	12.40	9.49
Ohio .....	14.60	13.00	10.30
Oklahoma .....	14.40	12.90	9.90
Pennsylvania .....	14.20	13.00	9.80
South Carolina .....	14.50	13.30	10.30
South Dakota .....	14.20	12.50	9.37
Tennessee .....	14.60	13.00	10.60
Texas .....	14.60	12.60	9.55
Virginia .....	14.00	13.00	9.90
West Virginia .....	14.30	12.90	10.00
Wisconsin .....	14.00	12.80	10.00
United States .....	14.40	13.00	10.10

## Austrian Winter Peas Prices Received and Farm Marketings by Month – United States: Marketing Years 2012-2013 through 2014-2015

[Marketing year average (MYA) prices are weighted average prices for the United States marketing year of July - June. Monthly farm marketings, based on a sample survey, as percent of total used for calculating MYA prices]

Month	Prices received			Farm marketing percentages		
	2012-2013	2013-2014	2014-2015	2012-2013	2013-2014	2014-2015
	(dollars per cwt)	(dollars per cwt)	(dollars per cwt)	(percent)	(percent)	(percent)
July .....	(S)	(D)	(S)	(S)	(D)	(S)
August .....	20.50	(D)	23.10	8.8	(D)	37.4
September .....	20.90	(D)	22.50	31.8	(D)	27.4
October .....	20.90	22.60	(D)	12.2	17.1	(D)
November .....	(D)	22.80	27.80	(D)	18.7	4.6
December .....	20.60	(D)	(D)	7.9	(D)	(D)
January <sup>1</sup> .....	21.00	(S)	(D)	13.5	(S)	(D)
February .....	21.30	(S)	(S)	15.0	(S)	(S)
March .....	(S)	(S)	26.00	(S)	(S)	7.7
April .....	(S)	(S)	(D)	(S)	(S)	(D)
May .....	(S)	(S)	(S)	(S)	(S)	(S)
June .....	17.80	(S)	(D)	7.0	(S)	(D)
MYA .....	20.70	23.50	22.70	100.0	100.0	100.0

(D) Withheld to avoid disclosing data for individual operations.

(S) Insufficient number of reports to establish an estimate.

<sup>1</sup> Second year.

## Dry Edible Peas Prices Received and Farm Marketings by Month – United States: Marketing Years 2012-2013 through 2014-2015

[Marketing year average (MYA) prices are weighted average prices for the United States marketing year of July - June. Monthly farm marketings, based on a sample survey, as percent of total used for calculating MYA prices]

Month	Prices received			Farm marketing percentages		
	2012-2013	2013-2014	2014-2015	2012-2013	2013-2014	2014-2015
	(dollars per cwt)	(dollars per cwt)	(dollars per cwt)	(percent)	(percent)	(percent)
July .....	14.80	16.50	12.80	5.4	2.7	3.5
August .....	14.30	14.50	11.00	20.3	18.3	21.4
September .....	14.50	14.30	11.40	17.0	18.7	13.1
October .....	15.30	15.50	11.00	10.5	11.3	9.3
November .....	16.50	15.90	12.00	7.5	6.2	5.2
December .....	16.60	14.60	11.60	7.4	9.2	6.0
January <sup>1</sup> .....	16.30	15.40	12.30	10.0	9.4	7.9
February .....	16.60	15.10	12.30	8.5	4.0	6.6
March .....	17.80	13.40	12.30	6.8	5.5	5.7
April .....	18.70	13.40	13.70	2.9	4.5	7.1
May .....	18.60	13.10	13.70	1.9	3.8	6.1
June .....	19.40	13.30	13.30	1.8	6.4	8.1
MYA .....	15.70	14.60	12.00	100.0	100.0	100.0

<sup>1</sup> Second year.

## Lentils Prices Received and Farm Marketings by Month – United States: Marketing Years 2012-2013 through 2014-2015

[Marketing year average (MYA) prices are weighted average prices for the United States marketing year of July - June. Monthly farm marketings, based on a sample survey, as percent of total used for calculating MYA prices]

Month	Prices received			Farm marketing percentages		
	2012-2013	2013-2014	2014-2015	2012-2013	2013-2014	2014-2015
	(dollars per cwt)	(dollars per cwt)	(dollars per cwt)	(percent)	(percent)	(percent)
July .....	18.50	20.30	18.90	5.1	7.9	12.4
August .....	18.20	19.00	20.00	9.6	9.7	13.5
September .....	21.20	23.70	22.80	10.3	7.4	11.1
October .....	22.30	23.00	23.70	10.2	9.3	12.3
November .....	21.30	19.50	25.20	6.5	5.8	5.9
December .....	18.90	19.90	29.90	8.5	7.2	7.6
January <sup>1</sup> .....	21.00	18.50	25.40	6.4	8.5	11.4
February .....	22.60	19.40	29.70	12.7	7.3	4.4
March .....	20.20	18.90	27.90	12.7	11.1	6.9
April .....	21.00	18.50	27.20	7.1	7.7	7.9
May .....	20.40	18.50	29.90	5.5	6.6	3.3
June .....	22.00	19.10	27.20	5.4	11.5	3.3
MYA .....	20.70	19.80	24.40	100.0	100.0	100.0

<sup>1</sup> Second year.

## Corn Prices Received and Farm Marketings by Month – United States: Marketing Years 2012-2013 through 2014-2015

[Marketing year average (MYA) prices are weighted average prices for the United States marketing year of September - August. Monthly farm marketings, based on a sample survey, as percent of total used for calculating MYA prices]

Month	Prices received			Farm marketing percentages		
	2012-2013	2013-2014	2014-2015	2012-2013	2013-2014	2014-2015
	(dollars per bushel)	(dollars per bushel)	(dollars per bushel)	(percent)	(percent)	(percent)
September .....	6.89	5.40	3.49	11.1	5.1	6.0
October .....	6.78	4.63	3.57	15.8	11.6	10.7
November .....	7.01	4.37	3.60	9.4	12.3	13.1
December .....	6.87	4.41	3.79	7.5	8.8	10.2
January <sup>1</sup> .....	6.96	4.42	3.82	14.0	14.2	12.8
February .....	7.04	4.35	3.79	6.2	9.4	6.6
March .....	7.13	4.52	3.81	8.7	9.1	7.4
April .....	6.97	4.71	3.75	4.9	7.3	5.2
May .....	6.97	4.71	3.64	5.2	4.8	4.8
June .....	6.97	4.50	3.59	5.8	5.7	9.4
July .....	6.79	4.06	3.80	6.0	5.9	8.4
August .....	6.21	3.63	3.68	5.4	5.8	5.4
MYA .....	6.89	4.46	3.70	100.0	100.0	100.0

<sup>1</sup> Second year.

## Sorghum Grain Prices Received by Month – States and United States: Marketing Years 2013-2014 and 2014-2015

[Marketing year: September - August for United States; June - May for Texas; August - July for Arkansas, Louisiana, and Oklahoma; September - August for Illinois, Kansas, and Missouri; October - September for Nebraska]

State	2013-2014							
	June	July	August	September	October	November	December	January <sup>1</sup>
	(dollars per cwt)	(dollars per cwt)	(dollars per cwt)	(dollars per cwt)	(dollars per cwt)	(dollars per cwt)	(dollars per cwt)	(dollars per cwt)
Arkansas .....	(D)	(S)	(D)	(D)	8.82	9.05	(D)	(D)
Illinois .....	11.90	(D)	(D)	(D)	6.92	7.43	7.49	7.15
Kansas .....	11.80	10.60	9.88	8.70	7.40	7.23	7.31	7.34
Louisiana .....	(D)	(D)	8.85	8.84	8.77	(D)	(D)	(S)
Missouri .....	(D)	12.50	11.90	8.08	8.12	7.40	8.14	8.12
Nebraska .....	12.40	11.50	10.20	8.45	7.38	7.16	7.18	7.06
Oklahoma .....	11.40	10.80	8.81	7.77	7.50	7.33	7.27	7.25
Texas .....	(D)	9.48	8.68	7.88	7.87	7.63	7.75	7.90
United States .....	11.10	9.63	8.82	8.17	7.73	7.38	7.49	7.52
State	2014-2015							
	February	March	April	May	June	July	August	January <sup>1</sup>
	(dollars per cwt)	(dollars per cwt)	(dollars per cwt)	(dollars per cwt)	(dollars per cwt)	(dollars per cwt)	(dollars per cwt)	(dollars per cwt)
Arkansas .....	(D)	(D)	(D)	(D)	(D)	(S)	7.22	(D)
Illinois .....	(D)	8.23	9.22	9.00	(S)	(S)	(D)	7.15
Kansas .....	7.61	8.01	8.19	8.18	7.59	6.36	5.71	7.34
Louisiana .....	7.56	(D)	(D)	(D)	(S)	(D)	7.92	(S)
Missouri .....	7.96	8.40	8.93	9.00	(D)	7.30	7.16	8.12
Nebraska .....	7.50	7.82	8.14	8.15	7.51	6.71	6.11	7.06
Oklahoma .....	7.58	8.23	8.43	8.04	7.13	6.39	5.95	7.25
Texas .....	7.74	8.96	9.65	8.21	7.51	7.53	7.13	7.90
United States .....	7.65	8.24	8.55	8.22	7.53	7.40	7.13	7.52
State	2014-2015							
	June	July	August	September	October	November	December	January <sup>1</sup>
	(dollars per cwt)	(dollars per cwt)	(dollars per cwt)	(dollars per cwt)	(dollars per cwt)	(dollars per cwt)	(dollars per cwt)	(dollars per cwt)
Arkansas .....	(D)	(S)	7.22	7.04	6.97	7.34	7.25	7.01
Illinois .....	(S)	(S)	(D)	(D)	6.23	5.71	(D)	6.50
Kansas .....	7.59	6.36	5.71	5.41	6.03	6.54	7.30	7.45
Louisiana .....	(S)	(D)	7.92	(D)	(D)	7.86	(D)	(D)
Missouri .....	(D)	7.30	7.16	5.70	5.24	6.10	6.96	6.69
Nebraska .....	7.51	6.71	6.11	5.82	6.07	6.68	7.48	7.47
Oklahoma .....	7.13	6.39	5.95	5.87	6.28	6.83	7.87	7.95
Texas .....	7.51	7.53	7.13	6.66	6.36	6.84	7.24	7.26
United States .....	7.53	7.40	7.13	6.53	6.26	6.58	7.33	7.40
State	2014-2015							
	February	March	April	May	June	July	August	January <sup>1</sup>
	(dollars per cwt)	(dollars per cwt)	(dollars per cwt)	(dollars per cwt)	(dollars per cwt)	(dollars per cwt)	(dollars per cwt)	(dollars per cwt)
Arkansas .....	7.66	(D)	7.37	7.65	(D)	(D)	7.93	(D)
Illinois .....	(D)	(D)	7.10	(D)	(D)	(D)	(S)	7.15
Kansas .....	7.87	8.04	7.96	7.52	7.13	7.78	6.84	7.34
Louisiana .....	7.57	(D)	(D)	(D)	(S)	(D)	8.02	(S)
Missouri .....	7.53	7.62	7.21	7.00	6.69	(D)	6.97	8.12
Nebraska .....	8.05	8.14	7.68	8.69	6.61	7.23	6.91	7.06
Oklahoma .....	8.11	7.89	7.90	7.42	7.59	7.65	6.38	7.25
Texas .....	7.69	7.76	7.55	7.26	8.48	7.67	7.96	7.90
United States .....	7.86	8.00	7.90	7.57	7.83	7.68	7.90	7.52

(D) Withheld to avoid disclosing data for individual operations.

(S) Insufficient number of reports to establish an estimate.

<sup>1</sup> Second year.

## Soybean Prices Received by Month – States and United States: Marketing Year 2013-2014

[Marketing year: September-August for United States; August-July for Louisiana and Mississippi; September-August for all other monthly marketing estimating States]

State	2013-2014						
	August	September	October	November	December	January <sup>1</sup>	February
	(dollars per bushel)	(dollars per bushel)	(dollars per bushel)	(dollars per bushel)	(dollars per bushel)	(dollars per bushel)	(dollars per bushel)
Arkansas .....	(D)	13.30	13.00	13.00	13.20	13.30	13.50
Illinois .....	14.20	13.50	12.80	12.80	13.20	13.10	13.40
Indiana .....	14.90	13.40	12.60	12.70	13.10	13.20	13.40
Iowa .....	14.20	13.90	12.50	12.70	13.00	12.80	13.10
Kansas .....	13.90	13.10	12.40	12.50	12.80	12.60	13.20
Kentucky .....	13.60	13.30	12.60	13.00	13.20	13.20	13.50
Louisiana .....	(D)	13.40	13.20	13.20	(D)	(D)	13.80
Michigan .....	14.40	13.00	12.40	12.50	13.00	12.80	13.30
Minnesota .....	14.30	13.30	12.50	12.60	12.70	12.60	12.90
Mississippi .....	12.70	13.20	13.10	13.00	13.20	13.00	13.60
Missouri .....	13.70	13.50	12.60	12.80	13.10	13.10	13.50
Nebraska .....	13.50	13.00	12.40	12.50	12.80	12.70	13.00
North Carolina .....	14.20	13.20	12.80	12.90	12.90	12.90	13.40
North Dakota .....	13.10	12.60	12.30	12.20	12.60	12.40	12.50
Ohio .....	14.60	13.00	12.30	12.70	13.10	13.10	13.40
South Dakota .....	13.80	12.70	12.20	12.20	12.70	12.50	12.70
Tennessee .....	13.20	13.00	12.70	12.80	13.20	13.10	13.50
Wisconsin .....	14.40	12.90	12.20	12.70	13.10	12.80	13.20
United States .....	14.10	13.30	12.50	12.70	13.00	12.90	13.20
State	March	April	May	June	July	August	
	(dollars per bushel)	(dollars per bushel)	(dollars per bushel)	(dollars per bushel)	(dollars per bushel)	(dollars per bushel)	
Arkansas .....	14.00	14.60	14.30	15.00	13.10	12.40	
Illinois .....	13.80	14.20	14.30	14.60	13.30	12.50	
Indiana .....	13.90	14.60	14.80	14.70	13.70	12.90	
Iowa .....	13.70	14.30	14.70	14.40	13.00	12.40	
Kansas .....	13.50	14.40	14.50	14.40	13.00	13.10	
Kentucky .....	13.80	14.40	14.80	14.60	13.30	12.70	
Louisiana .....	13.70	14.80	13.00	(D)	13.40	11.90	
Michigan .....	13.80	14.50	14.90	14.40	13.00	12.40	
Minnesota .....	13.30	14.40	14.00	14.20	13.00	12.60	
Mississippi .....	14.00	15.50	14.60	(D)	(D)	11.90	
Missouri .....	14.00	14.60	14.80	14.50	13.00	12.50	
Nebraska .....	13.70	14.20	14.50	14.20	13.00	12.00	
North Carolina .....	14.10	14.70	15.00	14.50	13.30	13.10	
North Dakota .....	12.70	13.10	13.20	12.70	11.70	10.70	
Ohio .....	14.10	14.50	15.00	14.80	13.30	13.10	
South Dakota .....	13.10	13.70	14.00	13.90	12.70	11.80	
Tennessee .....	13.90	14.50	14.40	14.50	12.80	11.90	
Wisconsin .....	13.40	14.00	14.70	14.40	13.40	12.50	
United States .....	13.70	14.30	14.40	14.30	13.10	12.40	

(D) Withheld to avoid disclosing data for individual operations.

<sup>1</sup> Second year.

## Soybean Prices Received by Month – States and United States: Marketing Year 2014-2015

[Marketing year: September-August for United States; August-July for Louisiana and Mississippi; September-August for all other monthly marketing estimating States]

State	2014-2015						
	August	September	October	November	December	January <sup>1</sup>	February
	(dollars per bushel)	(dollars per bushel)	(dollars per bushel)	(dollars per bushel)	(dollars per bushel)	(dollars per bushel)	(dollars per bushel)
Arkansas .....	12.40	10.70	10.60	10.80	10.70	10.70	10.50
Illinois .....	12.50	10.20	10.20	10.30	10.50	10.50	10.10
Indiana .....	12.90	11.00	10.00	10.20	10.50	10.50	10.20
Iowa .....	12.40	11.00	10.00	10.20	10.00	10.20	9.84
Kansas .....	13.10	10.50	9.50	9.73	9.75	9.78	9.61
Kentucky .....	12.70	10.50	10.40	10.50	10.70	10.60	10.20
Louisiana .....	11.90	11.10	10.70	10.90	10.90	10.80	11.40
Michigan .....	12.40	11.20	10.10	10.10	10.10	10.40	9.88
Minnesota .....	12.60	11.60	10.00	9.95	10.10	10.20	9.74
Mississippi .....	11.90	11.20	11.00	11.10	11.10	10.50	10.50
Missouri .....	12.50	11.50	9.69	9.99	10.30	10.10	9.91
Nebraska .....	12.00	11.00	9.54	9.93	9.88	9.98	9.60
North Carolina .....	13.10	11.10	10.60	10.20	10.10	10.20	10.00
North Dakota .....	10.70	10.10	9.58	9.74	9.82	9.50	9.10
Ohio .....	13.10	11.10	10.10	10.40	10.60	10.70	10.30
South Dakota .....	11.80	10.00	9.22	9.59	9.85	9.79	9.30
Tennessee .....	11.90	10.80	10.30	10.70	10.70	10.80	10.40
Wisconsin .....	12.50	11.20	10.10	10.10	10.00	10.20	10.00
United States .....	12.40	10.90	9.97	10.20	10.30	10.30	9.91
State	March	April	May	June	July	August	
	(dollars per bushel)	(dollars per bushel)	(dollars per bushel)	(dollars per bushel)	(dollars per bushel)	(dollars per bushel)	
Arkansas .....	10.30	10.10	9.88	9.90	10.00	9.80	
Illinois .....	10.10	9.90	9.69	9.77	10.20	9.77	
Indiana .....	10.10	9.94	9.91	9.91	10.30	10.00	
Iowa .....	9.76	9.58	9.50	9.50	10.00	9.49	
Kansas .....	9.39	9.29	9.35	9.38	9.79	9.29	
Kentucky .....	10.30	10.20	10.10	9.95	10.20	9.95	
Louisiana .....	10.70	10.50	10.20	10.10	10.40	9.96	
Michigan .....	9.91	10.00	9.61	9.68	10.20	10.40	
Minnesota .....	9.52	9.73	9.51	9.40	9.74	9.65	
Mississippi .....	10.30	10.10	9.95	9.81	(D)	10.10	
Missouri .....	9.97	9.77	9.67	9.67	10.10	9.80	
Nebraska .....	9.53	9.35	9.34	9.26	9.62	9.37	
North Carolina .....	10.10	10.00	9.77	9.93	10.10	9.39	
North Dakota .....	9.06	8.85	8.78	8.66	9.02	8.93	
Ohio .....	10.10	9.83	9.71	10.10	10.30	10.20	
South Dakota .....	9.22	9.08	9.13	9.12	9.32	9.12	
Tennessee .....	11.10	10.00	9.88	10.00	10.20	9.84	
Wisconsin .....	9.72	9.63	9.40	9.44	9.79	9.57	
United States .....	9.85	9.69	9.58	9.58	9.95	9.71	

(D) Withheld to avoid disclosing data for individual operations.

<sup>1</sup> Second year.



## Sorghum Grain Farm Marketing Percent by Month – States and United States: Marketing Years 2013-2014 and 2014-2015

[Monthly farm marketings, based on a sample survey, as a percent of total used for calculating marketing year average prices. Blank cells indicate month is outside State's designated marketing year]

State and Marketing Year	Jun	Jul	Aug	Sep	Oct	Nov	Dec	Jan	Feb	Mar	Apr	May	Jun	Jul	Aug
	(%)	(%)	(%)	(%)	(%)	(%)	(%)	(%)	(%)	(%)	(%)	(%)	(%)	(%)	(%)
<b>Arkansas</b>															
2013-2014 .....			2	39	30	9	8	6	3	1	1	1	-	-	
2014-2015 .....			4	45	32	8	2	5	3	-	-	-	1	-	
<b>Illinois</b>															
2013-2014 .....				1	29	49	5	5	-	5	4	2	-	-	-
2014-2015 .....				-	9	73	7	6	-	1	1	3	-	-	-
<b>Kansas</b>															
2013-2014 .....				1	8	19	19	22	10	8	6	3	2	1	1
2014-2015 .....				2	8	28	24	15	9	6	3	2	2	1	-
<b>Louisiana</b>															
2013-2014 .....			62	8	15	2	3	-	7	2	1	-	-	-	
2014-2015 .....			49	25	10	2	2	8	-	1	-	-	-	3	
<b>Missouri</b>															
2013-2014 .....				2	11	18	16	20	13	10	4	4	-	1	1
2014-2015 .....				15	14	24	16	15	5	4	3	1	1	1	1
<b>Nebraska</b>															
2013-2014 .....				1	16	18	13	14	14	10	5	2	4	2	1
2014-2015 .....				1	15	24	26	14	9	5	2	2	1	1	-
<b>Oklahoma</b>															
2013-2014 .....			1	11	19	14	19	18	6	4	4	2	1	1	
2014-2015 .....			4	16	23	17	19	10	5	2	1	2	1	-	
<b>Texas</b>															
2013-2014 .....	4	12	13	11	5	12	16	14	5	3	3	2			
2014-2015 .....	11	19	11	8	6	5	16	18	4	2	-	-			
<b>United States</b>															
2013-2014 .....				6.1	8.5	15.4	16.8	17.3	7.7	5.8	4.7	2.4	4.0	5.9	5.4
2014-2015 .....				6.4	10.3	21.2	21.2	15.7	7.7	4.5	2.2	1.9	3.1	5.8	-

- Represents zero.

## Soybean Farm Marketing Percent by Month – States and United States: Marketing Years 2013-2014 and 2014-2015

[Monthly farm marketings, based on a sample survey, as a percent of total used for calculating marketing year average prices. Blank cells indicate month is outside State's designated marketing year]

State and Marketing Year	Aug	Sep	Oct	Nov	Dec	Jan	Feb	Mar	Apr	May	Jun	Jul	Aug
	(%)	(%)	(%)	(%)	(%)	(%)	(%)	(%)	(%)	(%)	(%)	(%)	(%)
<b>Arkansas</b>													
2013-2014 .....		9	36	30	12	8	2	1	-	-	-	1	1
2014-2015 .....		13	30	21	16	10	2	2	2	1	1	1	1
<b>Illinois</b>													
2013-2014 .....		3	21	10	9	27	10	7	5	3	2	2	1
2014-2015 .....		3	21	13	11	20	10	4	3	3	6	3	3
<b>Indiana</b>													
2013-2014 .....		8	23	10	9	19	10	6	4	2	3	3	3
2014-2015 .....		5	23	14	9	12	9	10	4	3	5	3	3
<b>Iowa</b>													
2013-2014 .....		5	27	10	8	12	11	7	6	3	4	4	3
2014-2015 .....		3	32	9	6	12	9	5	4	4	6	6	4
<b>Kansas</b>													
2013-2014 .....		4	31	20	11	13	10	4	3	1	1	1	1
2014-2015 .....		3	27	22	12	10	8	5	4	3	3	2	1
<b>Kentucky</b>													
2013-2014 .....		1	14	23	17	29	7	4	1	1	1	1	1
2014-2015 .....		2	13	20	18	28	7	4	3	1	2	1	1
<b>Louisiana</b>													
2013-2014 .....	3	27	44	8	10	5	2	-	-	-	1	-	
2014-2015 .....	4	36	28	6	12	12	1	-	-	-	-	1	
<b>Michigan</b>													
2013-2014 .....		3	32	20	8	12	8	4	4	3	3	1	2
2014-2015 .....		1	26	20	12	10	6	6	4	3	5	4	3
<b>Minnesota</b>													
2013-2014 .....		5	27	11	12	12	9	8	4	3	4	3	2
2014-2015 .....		4	32	8	10	12	8	6	4	3	6	5	2
<b>Mississippi</b>													
2013-2014 .....	1	15	22	12	40	6	2	1	-	-	-	1	
2014-2015 .....	1	21	26	11	25	6	4	2	1	-	1	2	
<b>Missouri</b>													
2013-2014 .....		2	19	25	14	15	8	6	4	2	2	2	1
2014-2015 .....		2	16	24	14	15	8	5	4	3	4	3	2
<b>Nebraska</b>													
2013-2014 .....		5	34	11	10	20	9	4	2	1	1	2	1
2014-2015 .....		4	31	12	12	13	9	4	3	2	5	3	2
<b>North Carolina</b>													
2013-2014 .....		1	11	39	13	18	7	4	3	1	1	1	1
2014-2015 .....		1	13	27	18	16	6	5	4	3	3	3	1
<b>North Dakota</b>													
2013-2014 .....		3	22	18	15	16	9	5	3	3	2	3	1
2014-2015 .....		2	37	15	12	10	7	5	2	1	4	4	1
<b>Ohio</b>													
2013-2014 .....		12	32	11	6	12	9	6	5	2	1	2	2
2014-2015 .....		8	26	13	8	12	8	7	4	3	5	4	2
<b>South Dakota</b>													
2013-2014 .....		5	32	11	9	17	10	5	3	2	2	2	2
2014-2015 .....		3	41	8	6	11	9	4	3	2	6	4	3
<b>Tennessee</b>													
2013-2014 .....		3	26	30	10	21	3	2	1	1	1	1	1
2014-2015 .....		7	17	38	11	17	3	2	1	1	1	1	1
<b>Wisconsin</b>													
2013-2014 .....		2	27	30	10	12	8	3	2	2	2	1	1
2014-2015 .....		1	32	19	8	16	7	5	3	2	4	2	1
<b>United States</b>													
2013-2014 .....		5.7	26.8	14.2	11.0	16.3	8.5	5.3	3.7	2.2	2.2	2.2	1.9
2014-2015 .....		5.3	27.3	13.8	10.7	13.4	7.8	5.1	3.4	2.5	4.7	3.6	2.4

- Represents zero.

## Reliability of Prices Received Estimates

**Definition:** Prices received represent sales from producers to first buyers. They include all grades and qualities. The average commodity price from the survey multiplied by the total quantity marketed theoretically should give the total cash receipts for the commodity.

**Survey procedures:** Primary sales data used to determine grain prices were obtained from probability samples of about 1,900 mills and elevators. These procedures ensure that virtually all grain moving into commercial channels has a chance of being included in the survey. Generally, States surveyed account for 90 percent or more of total United States production. Livestock prices are obtained from packers, stockyards, auctions, dealers, and market check data from AMS-USDA, private marketing organizations, and state commodity groups and agencies. Inter-farm sales of grain and livestock are not included since they represent very small percentages of the total sales. Grain marketed for seed is also excluded. Fruit and vegetable prices are obtained from sample surveys and market check data from AMS-USDA, private marketing organizations, state agencies, and universities.

**Summary and estimation procedures:** Survey quantities sold are expanded by strata to state levels and used to weight average strata prices to a state average. State prices are then weighted to a United States price based on expanded sales. Recommendations are prepared by the Regional Field Offices and reviewed by the Agricultural Statistics Board in Washington, D.C. State recommendations are reviewed for reasonableness with survey data, other States, and recent historic estimates.

**Revisions:** In general, revisions are made during annual commodity market year estimation time, following five-year Census revisions, or when later information is received. Revisions are published in monthly issues of *Agricultural Prices*.

**Reliability:** United States price estimates based on probability surveys generally have a sampling error of less than one percent for the major commodities such as corn, wheat, soybeans, cotton, and rice. Current methods of summarization for non-probability commodities are not designed directly to calculate sampling errors. However, analytical measures approximate the United States relative sampling errors at around five percent. Any non-sampling errors are attributed to such things as the inability to obtain correct information, differences in interpreting questions or definitions, mistakes in coding or processing the data, etc. Efforts are made at each step in the survey process to minimize these non-sampling errors.

**Program Changes:** After the Council on Food, Agricultural and Resource Economics (C-FARE) 2009 program review which included changes in farm production practices, plans were implemented to make necessary program improvements in the agricultural price program. The index group structure for prices received was modified to maintain a more universal structure and consistency with the required 1910-1914 series.

Modifications implemented January 2014 include the following: update the current 1990-1992 base reference period to 2011, link the 1910-1914 series to the updated base reference period, 2011, create index groups used universally by researchers, data users, and policymakers, re-classify agricultural commodities into the index groups, expand the commodity coverage for vegetable, melon, non-citrus, and tree nuts, update monthly market weights, and adjust (normalization) current five year moving average cash receipts and farm input cost weights.

Modifications implemented January 2015 discontinued preliminary prices and replaced the annual average index with an annual index.

See Price Program Quick Stats Links at end of this report for program change details.

## August Prices Paid by Farmers

The August Index of Prices Paid for Commodities and Services, Interest, Taxes, and Farm Wage Rates (PPITW), at 108, is down 0.9 percent from July 2015 and 3.6 percent below August 2014.

**Production index:** The August index, at 109, is down 0.9 percent from last month and 4.4 percent lower than last year. Lower prices in August for feeder cattle, hay & forages, nitrogen, and diesel more than offset higher prices for complete feeds, supplements, herbicides, and insecticides.

**Feed:** The August index, at 105, decreased 0.9 percent from July and is down 7.1 percent from last August. Since July, lower prices for hay & forages, feed grains, and concentrates more than offset higher prices for complete feeds and supplements.

**Livestock and poultry:** The August index, at 147, decreased 3.3 percent from last month and is down 7.5 percent from last year. Since July, prices are lower for feeder cattle and feeder pigs. The August feeder cattle price, at \$219 per cwt, is down \$8.00 per cwt from the July price. August feeder pigs averaged \$88.00 per cwt, down \$7.00 per cwt from July.

**Fertilizer:** The August index, at 86, is down 2.3 percent from July and 7.5 percent below August a year ago. Since July, lower prices for nitrogen more than offset higher prices for mixed fertilizer and potash & phosphate.

**Chemicals:** The August index, at 107, is up 0.9 percent from July but is down 1.8 percent from last August. Compared with last month, prices are higher for herbicides and insecticides.

**Fuels:** The August index, at 61, is down 7.6 percent from a month earlier and 38 percent below August 2014. Compared with last month, prices are lower for diesel, gasoline, and LP gas.

**Machinery:** The August index, at 115, was unchanged from July but is 1.8 percent above last August.

**Consumer price index:** The August 2015 Consumer Price Index, as issued by the Bureau of Labor Statistics, for all urban consumers (CPI-U) decreased slightly before seasonal adjustment to a level of 238.316 (1982-1984=100). The July index is 238.654. For the 12 month period ending in August, the overall index increased slightly.

## Prices Paid Indexes and Related Parity Ratios – United States: August 2015 with Comparisons

[Revised historical price indexes for months not shown are available at [www.nass.usda.gov](http://www.nass.usda.gov)]

Index Group and Ratios	1910-1914 Base			2011 Base		
	August 2014	July 2015	August 2015	August 2014	July 2015	August 2015
	(percent)	(percent)	(percent)	(percent)	(percent)	(percent)
Prices paid by farmers for commodities, services, interest, taxes, and wage rates (PPITW) .....	3023	2951	2930	112	109	108
Production .....	2374	2289	2268	114	110	109
Feed .....	1249	1165	1162	113	106	105
Livestock and poultry .....	3146	3003	2908	159	152	147
Seeds .....	3746	3755	3755	114	114	114
Fertilizer .....	1114	1060	1040	93	88	86
Chemicals .....	980	953	957	109	106	107
Fuels .....	2775	1835	1711	99	66	61
Supplies and repairs .....	1252	1243	1243	106	105	105
Autos and trucks .....	3204	3245	3235	104	106	105
Machinery .....	6882	7044	7044	113	115	115
Building materials .....	2495	2501	2491	107	108	107
Services and rent .....	2322	2370	2369	(NA)	(NA)	(NA)
Services .....	(NA)	(NA)	(NA)	110	113	113
Rent .....	(NA)	(NA)	(NA)	108	110	110
Interest <sup>1</sup> .....	3504	3539	3539	96	97	97
Taxes <sup>2</sup> .....	6233	6376	6376	105	107	107
Wage rates .....	7654	7865	7865	107	110	110
Production, interest, taxes, and wage rates (PITW) .....	3177	3088	3064	113	110	109
Family living-CPI <sup>3</sup> .....	2259	2267	2264	106	106	106
Ratio (received/paid) .....	(NA)	(NA)	(NA)	97	91	94
Parity ratio <sup>4</sup> .....	37	35	36	(NA)	(NA)	(NA)
Parity ratio adjusted <sup>5</sup> .....	38	36	37	(NA)	(NA)	(NA)
PPITW adjusted for productivity <sup>6</sup> .....	1417	1409	1405	(NA)	(NA)	(NA)
Crop sector (PPITW) .....	(NA)	(NA)	(NA)	107	106	105
Livestock sector (PPITW) .....	(NA)	(NA)	(NA)	116	112	111
Farm sector (production) .....	(NA)	(NA)	(NA)	127	121	119
Non-farm sector (production) .....	(NA)	(NA)	(NA)	106	103	103

(NA) Not available.

<sup>1</sup> Interest per acre on farm real estate debt and interest rate on farm non-real estate debt.

<sup>2</sup> Farm real estate taxes payable per acre.

<sup>3</sup> Bureau of Labor Statistics, Consumer Price Index for all urban consumers (CPI-U), for the previous month converted by the USDA.

<sup>4</sup> Ratio of index of prices received to PPITW (1910-1914=100).

<sup>5</sup> Based on estimated cash receipts, from marketings and government payments, the preliminary adjustment factor is 1.026 for 2015 and the revised factor is 1.026 for 2014.

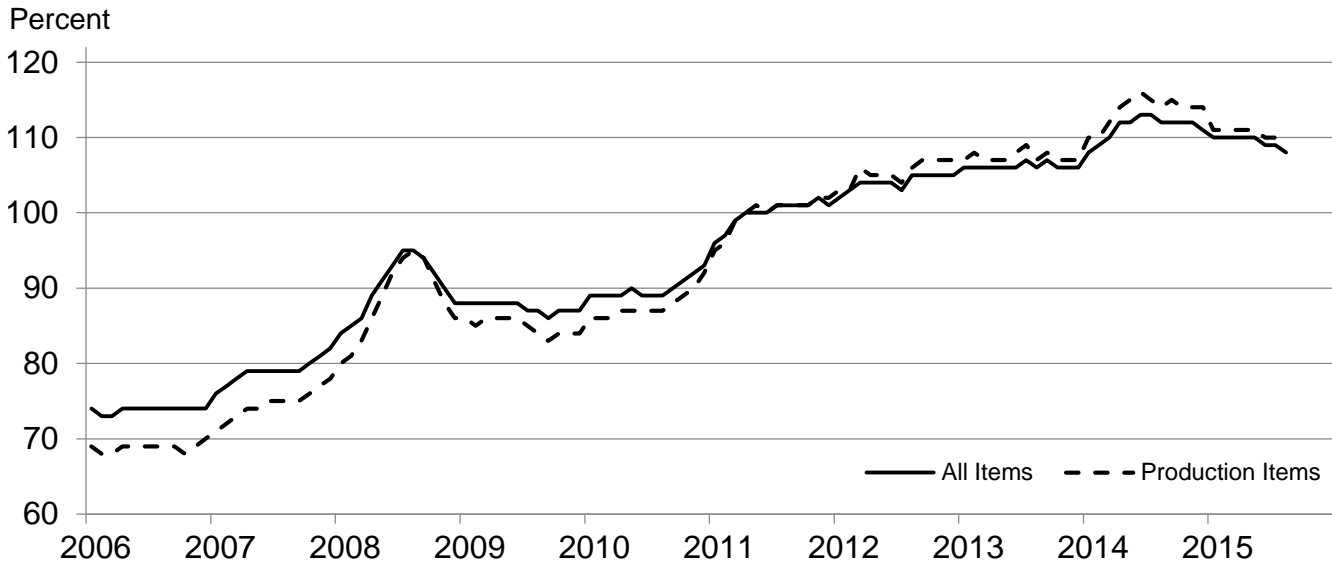
<sup>6</sup> PPITW is adjusted based on productivity trend for the prior 15 years.

## Prices Paid Indexes and Annual Weights for Input Components and Sub-components – United States: August 2015 with Comparisons

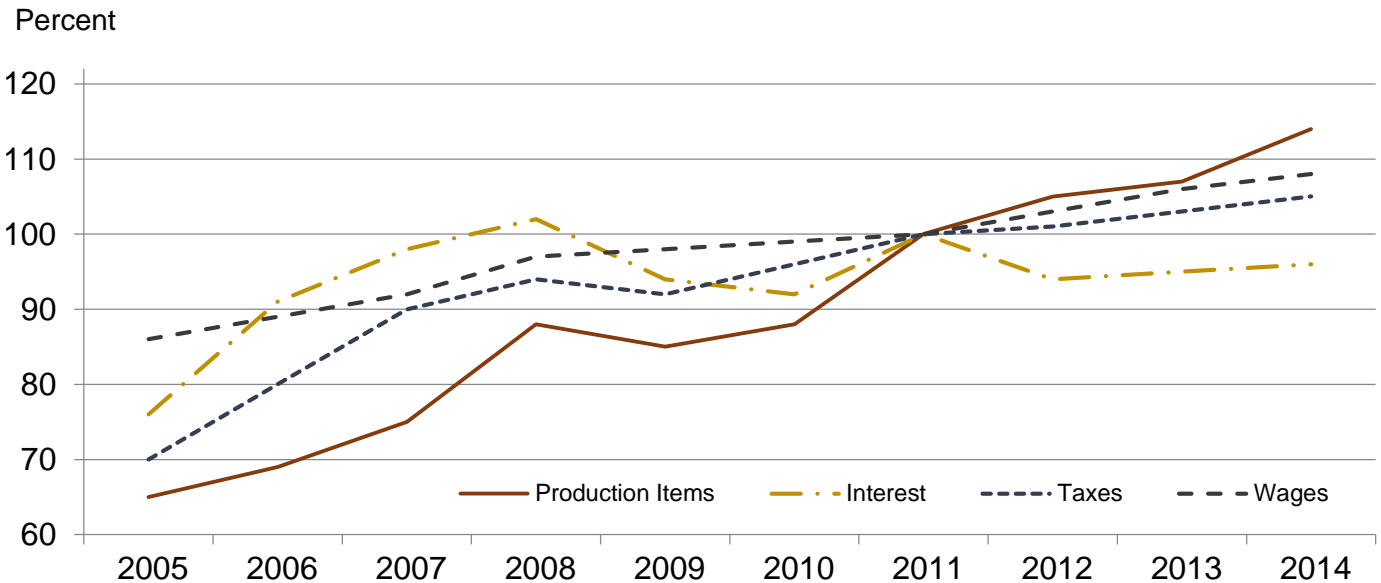
[Revised historical price indexes for months not shown are available at [www.nass.usda.gov](http://www.nass.usda.gov). Relative weights are a five year moving average]

Index Group	Relative weights		Indexes (2011=100)		
	2014	2015	August 2014	July 2015	August 2015
	(percent)	(percent)	(percent)	(percent)	(percent)
Production items .....	74.1	74.6	114	110	109
Feed .....	15.5	15.5	113	106	105
Feed grains .....	2.2	2.2	64	66	64
Complete feeds .....	7.6	7.6	120	112	114
Hay and forages .....	1.9	1.9	115	101	93
Concentrates .....	2.5	2.5	138	122	121
Supplements .....	1.3	1.3	107	112	117
Livestock and poultry .....	8.5	8.3	159	152	147
Feeder cattle .....	6.6	6.4	165	166	160
Feeder pigs .....	0.7	0.7	164	68	63
Milk cow replacements .....	0.7	0.7	139	143	143
Poultry .....	0.5	0.5	102	102	102
Seeds .....	4.9	5.0	114	114	114
Field crops .....	4.4	4.5	113	114	114
Grasses and legumes .....	0.5	0.5	123	120	120
Fertilizer .....	6.2	6.4	93	88	86
Mixed fertilizer .....	2.7	2.8	85	86	86
Nitrogen .....	2.6	2.7	100	92	88
Potash and phosphate .....	0.9	0.9	93	83	83
Chemicals .....	3.1	3.2	109	106	107
Herbicides .....	1.9	2.0	109	107	107
Insecticides .....	0.7	0.7	111	107	107
Fungicides and other .....	0.4	0.5	104	103	104
Fuels .....	4.1	4.0	99	66	61
Diesel .....	2.6	2.5	91	63	59
Gasoline .....	0.9	0.8	107	77	73
LP gas .....	0.7	0.7	118	61	56
Supplies and repairs .....	4.3	4.3	106	105	105
Supplies .....	1.4	1.4	106	106	106
Repairs .....	2.8	2.9	106	105	105
Autos and trucks .....	1.1	1.1	104	106	105
Autos .....	0.1	0.1	101	102	101
Trucks .....	1.0	1.0	105	106	106
Machinery .....	4.9	5.2	113	115	115
Tractors .....	1.1	1.1	108	110	110
Self-propelled .....	2.0	2.1	116	119	119
Other machinery .....	1.9	2.0	112	115	115
Building materials .....	3.7	3.7	107	108	107
Services .....	10.8	10.8	110	113	113
Custom rates .....	1.1	1.1	109	112	112
Other services .....	9.7	9.7	110	113	113
Rent .....	6.9	7.1	108	110	110
Cash .....	3.7	3.8	109	110	110
Share .....	3.2	3.3	108	110	110
Interest .....	2.6	2.3	96	97	97
Taxes .....	2.9	2.8	105	107	107
Wage rates .....	6.4	6.4	107	110	110
Family living-CPI .....	14.0	13.9	106	106	106

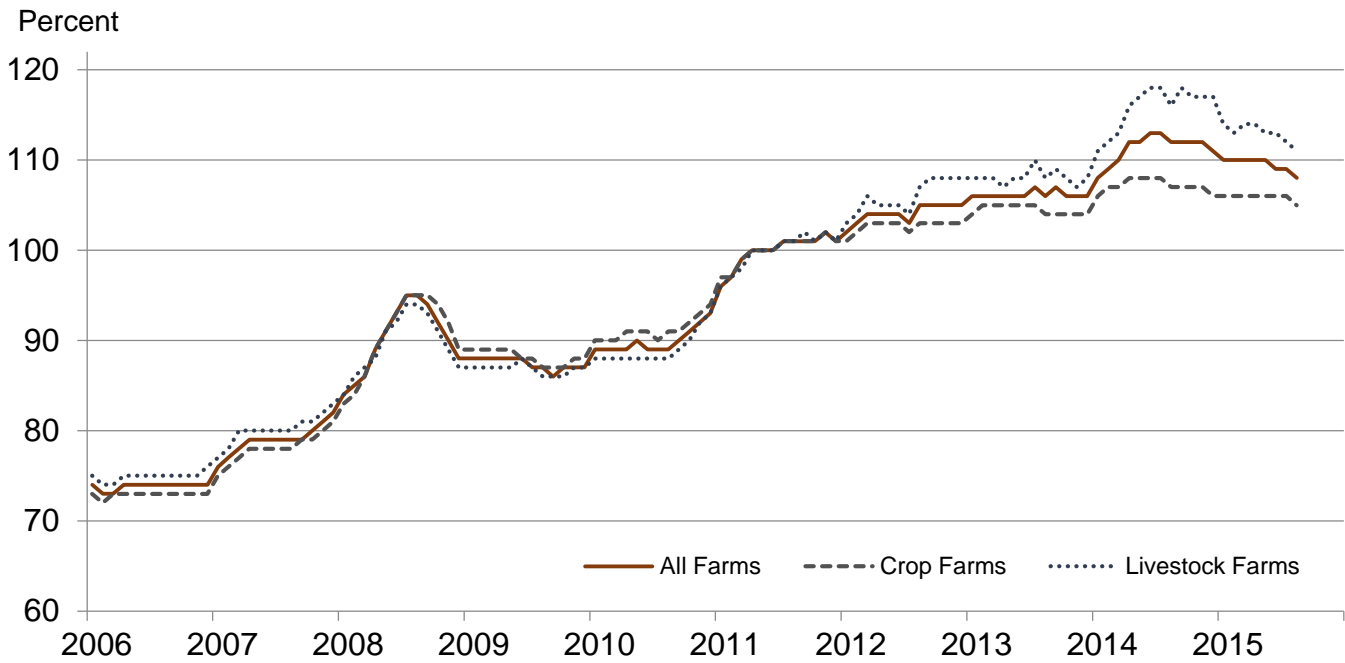
## Paid Indexes by Month, All Items and Production Items – United States: 2011=100



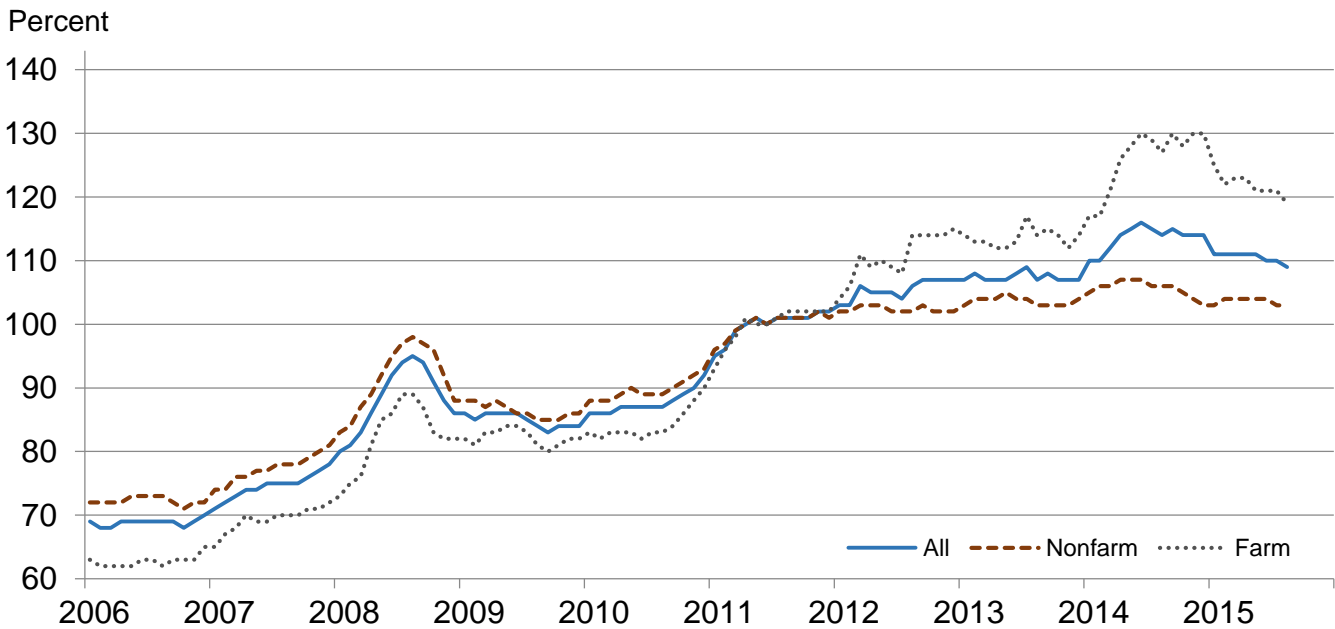
## Paid Indexes, Annual Averages, Production Items, Interest, Taxes, and Wages – United States: 2011=100



## Paid Indexes by Farm Type and Month, All Items – United States: 2011=100

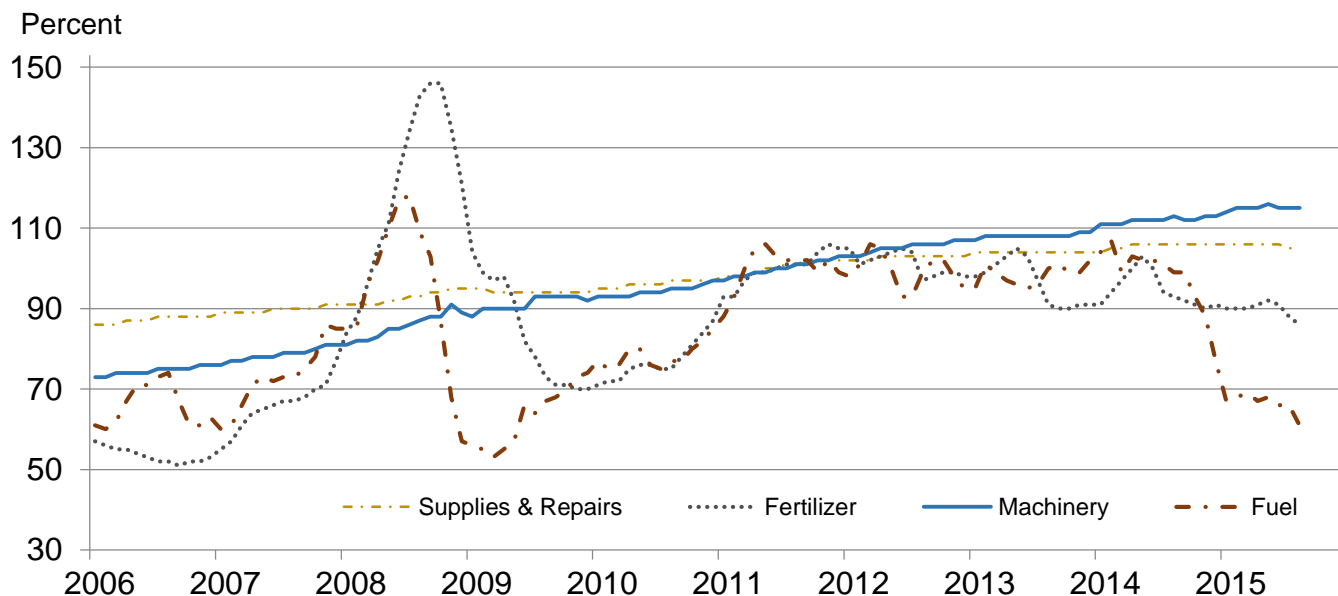


## Paid Indexes by Origin and Month, All Production Items – United States: 2011=100

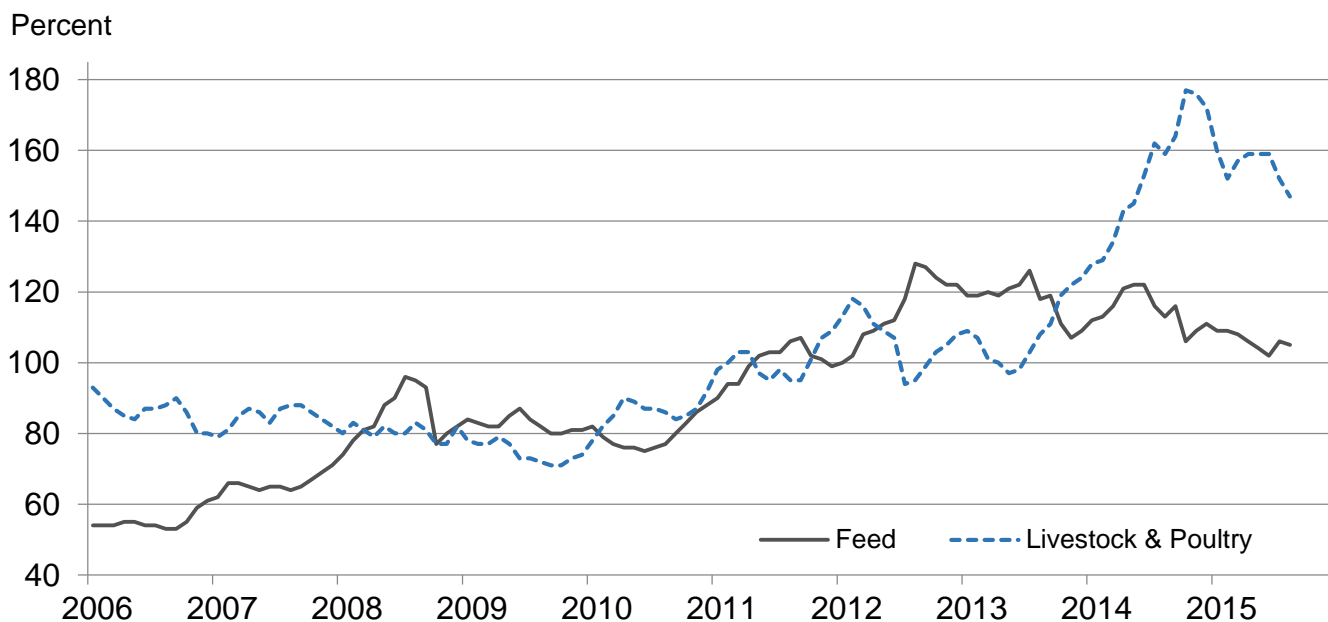




## Paid Indexes by Non-Farm Sector and Month, Supplies & Repairs, Fertilizer, Machinery, and Fuel – United States: 2011=100



## Paid Indexes by Month, Feed and Livestock & Poultry – United States: 2011=100



## Feed Price Ratios – United States: August 2015 with Comparisons

Feed price ratio <sup>1</sup>	August 2014	July 2015	August 2015
Broiler-feed: pounds of broiler grower feed equal in value to 1 pound of broiler, live weight <sup>2</sup> .....	4.8	4.7	4.4
Market egg feed: pounds of laying feed equal in value to 1 dozen eggs <sup>3</sup> .....	8.6	19.6	26.5
Hog-corn: bushels of corn equal in value to 100 pounds of hog, live weight .....	22.9	15.4	16.0
Milk-feed: pounds of 16% mixed dairy feed equal in value to 1 pound of whole milk <sup>4</sup> .....	2.63	2.01	2.11
Steer & heifer-corn: bushels of corn equal in value to 100 pounds of steer & heifers, live weight .....	43.8	39.5	40.5
Turkey-feed: pounds of turkey grower equal in value to 1 pound of turkey, live weight <sup>5</sup> .....	6.8	8.5	9.4

<sup>1</sup> Effective January 1995, prices of commercial prepared feeds are based on current United States prices received for corn, soybeans, alfalfa hay, and all wheat.

<sup>2</sup> The price of commercial prepared broiler feed is based on current United States prices received for corn and soybeans. The modeled feed uses 58 percent corn and 42 percent soybeans.

<sup>3</sup> The price of commercial prepared layer feed is based on current United States prices received for corn and soybeans. The modeled feed uses 75 percent corn and 25 percent soybeans.

<sup>4</sup> The price of commercial prepared dairy feed is based on current United States prices received for corn, soybeans, and alfalfa. The modeled feed uses 51 percent corn, 8 percent soybeans, and 41 percent alfalfa.

<sup>5</sup> The price of commercial prepared turkey feed is based on current United States prices received for corn, soybeans, and wheat. The modeled feed uses 51 percent corn, 28 percent soybeans, and 21 percent wheat.

## Prices Received Used to Calculate Feed Price Ratios – United States: August 2015 with Comparisons

[Price data source for livestock and poultry commodities is United States Department of Agriculture's Agriculture Marketing Service]

Item	August 2014	July 2015	August 2015
	(dollars)	(dollars)	(dollars)
Broilers, live ..... pound	0.600	0.510	0.470
Eggs, market ..... dozen	0.861	1.81	2.38
Hogs, all .....cwt	83.20	58.70	59.00
Milk, all .....cwt	24.20	16.60	16.70
Steers and heifers .....cwt	159.00	150.00	149.00
Turkeys, live ..... pound	0.756	0.848	0.897
Corn ..... bushel	3.63	3.80	3.68
Hay, alfalfa ..... ton	207.00	169.00	159.00
Soybeans ..... bushel	12.40	9.95	9.71
Wheat, all ..... bushel	5.97	5.23	4.85

## Prices Paid for Feeder Livestock – United States: August 2015 with Comparisons

[Price data source is United States Department of Agriculture's Agriculture Marketing Service]

Item	August 2014	July 2015	August 2015
	(dollars)	(dollars)	(dollars)
Feeder cattle & calves .....cwt	227.00	227.00	219.00
Feeder pigs .....cwt	230.00	95.00	88.00

## Reliability of Prices Paid Estimates

**Definition:** Prices paid by farmers represent the average costs of inputs purchased by farmers and ranchers to produce agricultural commodities. Conceptually, the average price when multiplied by quantity purchased should equal total producer expenditures for the item.

**Survey procedures:** The prices paid data are obtained from establishments that sell goods and services to farmers and ranchers. Annually, about 8,500 firms are randomly selected from lists by type of item sold with an average response rate in the range of 75-80 percent. Firms are asked to report the price for the specified item "most commonly bought by farmers" or that was the "volume seller". Approximately 135 items are surveyed each March to represent all production input items purchased. The survey reference period for most items is the five business days centered at the 15th of the month. Separate prices paid surveys are conducted for agricultural chemicals, fuels, feed, fertilizer, machinery, and seed.

**Summary and estimation procedures:** The annual March Prices Paid Survey is summarized as a non-probability survey. Average prices reported are aggregated to the region and United States level using weights available from expenditure data and other administrative sources. Price recommendations are prepared by the Regional Field Offices and Headquarters for review by the Agricultural Statistics Board in Washington, D.C. Also, the change in price level for individual items surveyed are combined to the regional and United States levels, and are published as prices paid indexes referenced to a specific base period. Prices paid indexes for new autos and trucks, building materials, farm supplies, motor supplies, and marketing containers are updated based on price changes measured in selected Bureau of Labor Statistics (BLS) indexes.

**Revisions:** Any revisions are published in the monthly and in annual issues of Agricultural Prices. The basis for revision must be supported by additional data that directly affect the level of the estimate. More revisions are likely for March when separate prices paid surveys are conducted, in lieu of BLS indexes, by the USDA to measure price change.

**Reliability:** Current methods of summarization for the March data are not designed directly to calculate sampling errors. However, analytical measures approximate the United States relative sampling errors for major items around 10 percent. Any non-sampling errors are attributed to such things as the inability to obtain correct information, differences in interpreting questions or definitions, mistakes in coding or processing the data, etc. Efforts are made at each step in the survey process to minimize these non-sampling errors.

**Program change:** Effective January 2014, the National Agricultural Statistics Service modified the five-year moving weights and updated the base reference period. In January 2015, publication of preliminary prices was suspended, and the annual average index was replaced by an annual index.

As of January 2014, the 1990-1992 base reference period was updated to 2011. Five-year moving average weights are adjusted (normalized) to minimize the effects of price changes. The 1910-1914=100 price indexes, required by statute for computing parity prices, were linked forward based on the changes in the new 2011=100 indexes. The new indexes were constructed by multiplying the ratios of the current prices to the base period prices by the moving average weights.

## Information Contacts

### General

Troy Joshua, Chief, Environmental, Economics and Demographics Branch ..... (202) 720-6146

### Crop Prices Received

Lance Honig, Chief, Crops Branch ..... (202) 720-2127

Anthony Prillaman, Head, Field Crops Section ..... (202) 720-2127

Angie Considine – Cotton, Cotton Ginnings, Sorghum ..... (202) 720-5944

Tony Dahlman – Soybeans, Barley, Crop Weather ..... (202) 720-7621

Chris Hawthorn – Corn, Flaxseed, Proso Millet ..... (202) 720-9526

James Johanson – County Estimates, Hay ..... (202) 690-8533

Jean Porter – Oats, Rye, Wheat ..... (202) 720-8068

Bianca Pruneda – Peanuts, Rice ..... (202) 720-7688

Travis Thorson – Sunflower, Other Oilseeds ..... (202) 720-7369

Jorge Garcia-Pratts, Head, Fruits, Vegetables and Special Crops Section ..... (202) 720-2127

Vincent Davis – Fresh and Processing Vegetables, Onions, Strawberries ..... (202) 720-2157

Fleming Gibson – Citrus, Coffee, Grapes, Sugar Crops, Tropical Fruits ..... (202) 720-5412

Greg Lemmons – Berries, Cranberries, Potatoes, Sweet Potatoes ..... (202) 720-4285

Dave Losh – Hops ..... (360) 709-2400

Dan Norris – Austrian Winter Peas, Dry Edible Peas, Lentils, Mint, Mushrooms, Peaches, Pears,

Wrinkled Seed Peas, Dry Beans ..... (202) 720-3250

Daphne Schauber – Floriculture, Maple Syrup, Nursery, Tree Nuts ..... (202) 720-4215

Chris Singh – Apples, Apricots, Cherries, Plums, Prunes, Tobacco ..... (202) 720-4288

### Livestock Prices Received

Dan Kerestes, Chief, Livestock Branch ..... (202) 720-3570

Scott Hollis, Head, Livestock Section ..... (202) 720-3570

Doug Bounds – Hogs and Pigs ..... (202) 720-3106

Scott Hollis – Sheep and Goats ..... (202) 720-3570

Michael Klamm – Cattle and Cattle on Feed ..... (202) 720-3040

Mike Miller – Milk, Milk Cows ..... (202) 720-3278

Bruce Boess, Head, Poultry and Specialty Commodities Section ..... (202) 720-3570

Heidi Gleich – Broilers ..... (202) 720-0585

Kim Linonis – Eggs ..... (202) 690-8632

Sammy Neal – Turkeys ..... (202) 720-3244

Josh O’Rear – Honey ..... (202) 690-3676

### Indexes, Prices Paid, and Parity Prices

Troy Joshua, Chief, Environmental, Economics and  
Demographics Branch ..... (202) 720-6146

Tony Dorn, Head, Economics Section ..... (202) 690-3223

Daryl Brinkman – Prices Received Indexes, Parity Prices ..... (202) 720-8844

Greg Gholson – Prices Received Indexes, Parity Prices, Prices Paid Indexes, Prices Paid for Feed,  
Fertilizer, Chemicals, Seeds, Fuels, Farm Supplies and Repairs, Farm Machinery, Feeder Livestock,

Poultry Chicks, Feed Price Ratios ..... (202) 690-1348

Joe Hagedorn – Cash Rents, Grazing Fees ..... (202) 690-3231

## Access to NASS Reports

For your convenience, you may access NASS reports and products the following ways:

- All reports are available electronically, at no cost, on the NASS web site: <http://www.nass.usda.gov>
- Both national and state specific reports are available via a free e-mail subscription. To set-up this free subscription, visit <http://www.nass.usda.gov> and in the “Follow NASS” box under “Receive reports by Email,” click on “National” or “State” to select the reports you would like to receive.

For more information on NASS surveys and reports, call the NASS Agricultural Statistics Hotline at (800) 727-9540, 7:30 a.m. to 4:00 p.m. ET, or e-mail: [nass@nass.usda.gov](mailto:nass@nass.usda.gov).

The U.S. Department of Agriculture (USDA) prohibits discrimination against its customers, employees, and applicants for employment on the basis of race, color, national origin, age, disability, sex, gender identity, religion, reprisal, and where applicable, political beliefs, marital status, familial or parental status, sexual orientation, or all or part of an individual's income is derived from any public assistance program, or protected genetic information in employment or in any program or activity conducted or funded by the Department. (Not all prohibited bases will apply to all programs and/or employment activities.)

If you wish to file a Civil Rights program complaint of discrimination, complete the [USDA Program Discrimination Complaint Form](#) (PDF), found online at [http://www.ascr.usda.gov/complaint\\_filing\\_cust.html](http://www.ascr.usda.gov/complaint_filing_cust.html), or at any USDA office, or call (866) 632-9992 to request the form. You may also write a letter containing all of the information requested in the form. Send your completed complaint form or letter to us by mail at U.S. Department of Agriculture, Director, Office of Adjudication, 1400 Independence Avenue, S.W., Washington, D.C. 20250-9410, by fax (202) 690-7442 or email at [program.intake@usda.gov](mailto:program.intake@usda.gov).

## Price Program Quick Stats Links

Economics and Prices

[http://www.nass.usda.gov/Statistics\\_by\\_Subject/Economics\\_and\\_Prices/index.asp](http://www.nass.usda.gov/Statistics_by_Subject/Economics_and_Prices/index.asp)

January 2014 Price Program Update

[http://www.nass.usda.gov/Surveys/Guide\\_to\\_NASS\\_Surveys/Prices/updates.pdf](http://www.nass.usda.gov/Surveys/Guide_to_NASS_Surveys/Prices/updates.pdf)

January 2015 Price Program Update

[http://www.nass.usda.gov/Surveys/Guide\\_to\\_NASS\\_Surveys/Prices/update2015.pdf](http://www.nass.usda.gov/Surveys/Guide_to_NASS_Surveys/Prices/update2015.pdf)

April 2015 Price Program Update

[http://www.nass.usda.gov/Surveys/Guide\\_to\\_NASS\\_Surveys/Prices/updateApr2015.pdf](http://www.nass.usda.gov/Surveys/Guide_to_NASS_Surveys/Prices/updateApr2015.pdf)