



Released January 12, 2015, by the National Agricultural Statistics Service (NASS), Agricultural Statistics Board, United States Department of Agriculture (USDA).

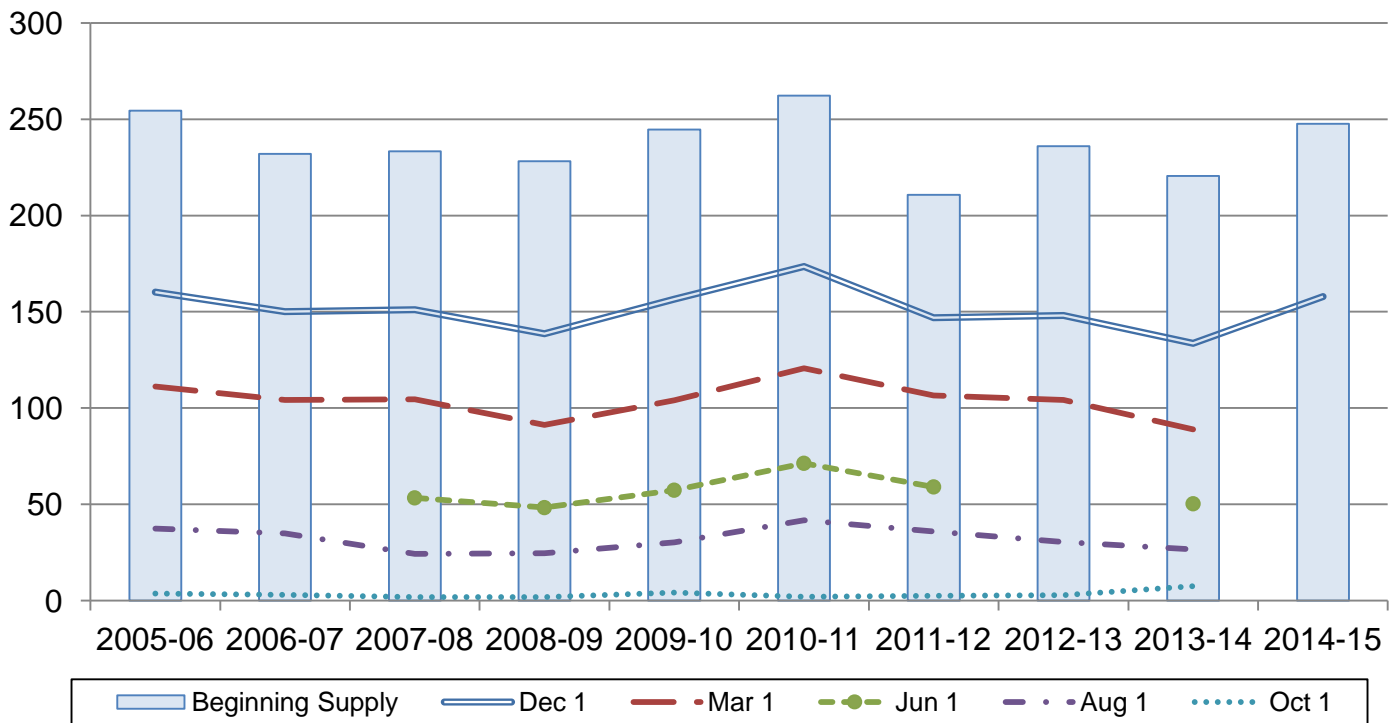
Rough Rice Stocks Up 18 Percent from December 2013

Rough rice stocks in all positions on December 1, 2014, totaled 158 million hundredweight (cwt), up 18 percent from the total on December 1, 2013. Stocks held on farms totaled 47.9 million cwt, and off-farm stocks totaled 110 million cwt. Long grain varieties accounted for 67 percent of the total rough rice, medium grain accounted for 31 percent, and short grain varieties accounted for 2 percent.

Milled rice stocks in all positions totaled 5.65 million cwt, down 15 percent from a year ago. Milled rice stocks were comprised of 4.05 million cwt of whole kernel rice and 1.59 million cwt of second heads, screenings, and brewers rice.

Rough Rice Stocks – United States

Million cwt



Rice Stocks by Position and Month – United States: 2013 and 2014 (Domestic Units)

Date	2013			2014		
	On farms	Off farms ¹	Total all positions	On farms	Off farms ¹	Total all positions
	(1,000 cwt)	(1,000 cwt)	(1,000 cwt)	(1,000 cwt)	(1,000 cwt)	(1,000 cwt)
Rough rice						
March 1	18,430	85,839	104,269	14,995	73,959	88,954
June 1 ²	(NA)	(NA)	(NA)	4,830	45,521	50,351
August 1	640	29,880	30,520	305	26,299	26,604
October 1 ³	20	2,906	2,926	15	7,523	7,538
December 1	36,935	96,636	133,571	47,865	110,061	157,926
Milled rice						
March 1	(X)	6,665	6,665	(X)	5,844	5,844
June 1 ²	(X)	(NA)	(NA)	(X)	5,870	5,870
August 1	(X)	4,132	4,132	(X)	3,711	3,711
October 1 ³	(X)	1,210	1,210	(X)	1,113	1,113
December 1	(X)	6,605	6,605	(X)	5,646	5,646

(NA) Not available.

(X) Not applicable.

¹ Includes stocks at mills, elevators, warehouses, ports, and in transit.

² Estimates discontinued in 2013.

³ California only.

Rice Stocks by Position and Month – United States: 2013 and 2014 (Metric Units)

[Data may not add to totals due to rounding]

Date	2013			2014		
	On farms	Off farms ¹	Total all positions	On farms	Off farms ¹	Total all positions
	(metric tons)	(metric tons)	(metric tons)	(metric tons)	(metric tons)	(metric tons)
Rough rice						
March 1	835,970	3,893,590	4,729,560	680,160	3,354,720	4,034,890
June 1 ²	(NA)	(NA)	(NA)	219,090	2,064,800	2,283,880
August 1	29,030	1,355,330	1,384,360	13,830	1,192,900	1,206,740
October 1 ³	910	131,810	132,720	680	341,240	341,920
December 1	1,675,340	4,383,340	6,058,680	2,171,120	4,992,280	7,163,400
Milled rice						
March 1	(X)	302,320	302,320	(X)	265,080	265,080
June 1 ²	(X)	(NA)	(NA)	(X)	266,260	266,260
August 1	(X)	187,420	187,420	(X)	168,330	168,330
October 1 ³	(X)	54,880	54,880	(X)	50,480	50,480
December 1	(X)	299,600	299,600	(X)	256,100	256,100

(NA) Not available.

(X) Not applicable.

¹ Includes stocks at mills, elevators, warehouses, ports, and in transit.

² Estimates discontinued in 2013.

³ California only.

Rice Stocks by Position – States and United States: December 1, 2013 and 2014

State	2013			2014		
	On farms	Off farms ¹	Total all positions	On farms	Off farms ¹	Total all positions
	(1,000 cwt)	(1,000 cwt)	(1,000 cwt)	(1,000 cwt)	(1,000 cwt)	(1,000 cwt)
Rough rice						
Arkansas	18,000	38,805	56,805	22,500	51,622	74,122
California	3,120	38,294	41,414	3,415	36,001	39,416
Louisiana	8,150	7,281	15,431	11,100	9,578	20,678
Mississippi	(D)	(D)	3,486	4,000	2,100	6,100
Missouri	(D)	(D)	7,893	(D)	(D)	8,842
Texas	1,650	6,892	8,542	(D)	(D)	8,768
Unallocated ²	6,015	5,364	-	6,850	10,760	-
United States	36,935	96,636	133,571	47,865	110,061	157,926
Milled rice						
Arkansas	(X)	(D)	(D)	(X)	1,714	1,714
California	(X)	2,337	2,337	(X)	2,490	2,490
Louisiana	(X)	(D)	(D)	(X)	(D)	(D)
Mississippi	(X)	(D)	(D)	(X)	(D)	(D)
Missouri	(X)	(D)	(D)	(X)	(D)	(D)
Texas	(X)	687	687	(X)	547	547
Unallocated ²	(X)	3,581	3,581	(X)	895	895
United States	(X)	6,605	6,605	(X)	5,646	5,646

- Represents zero.

(D) Withheld to avoid disclosing data for individual operations.

(X) Not applicable.

¹ Includes stocks at mills, elevators, warehouses, ports, and in transit.

² Unallocated includes State data withheld to avoid disclosure of individual operations.

**Rough Rice Stocks by Length of Grain in All Positions – States and United States:
December 1, 2013 and 2014**

State	Long		Medium		Short		Total	
	2013	2014	2013	2014	2013	2014	2013	2014
	(1,000 cwt)	(1,000 cwt)	(1,000 cwt)	(1,000 cwt)	(1,000 cwt)	(1,000 cwt)	(1,000 cwt)	(1,000 cwt)
California	(D)	(D)	37,632	36,358	(D)	(D)	41,414	39,416
Other States ¹	(D)	(D)	7,454	12,125	(D)	(D)	92,157	118,510
United States	85,149	106,786	45,086	48,483	3,336	2,657	133,571	157,926

(D) Withheld to avoid disclosing data for individual operations.

¹ Other States include Arkansas, Louisiana, Mississippi, Missouri, and Texas.

**Milled Rice Stocks by Length of Grain in All Positions – States and United States:
December 1, 2013 and 2014**

State	Whole kernels (head rice)							
	Long		Medium		Short		Total	
	2013	2014	2013	2014	2013	2014	2013	2014
	(1,000 cwt)	(1,000 cwt)	(1,000 cwt)	(1,000 cwt)	(1,000 cwt)	(1,000 cwt)	(1,000 cwt)	(1,000 cwt)
California	(D)	(D)	1,110	1,487	(D)	(D)	1,169	1,540
Other States ¹	(D)	(D)	175	207	(D)	(D)	3,522	2,513
United States	3,348	2,308	1,285	1,694	58	51	4,691	4,053
State	Broken kernels							
	Second heads		Screenings ²		Brewers		Total	
	2013	2014	2013	2014	2013	2014	2013	2014
	(1,000 cwt)	(1,000 cwt)	(1,000 cwt)	(1,000 cwt)	(1,000 cwt)	(1,000 cwt)	(1,000 cwt)	(1,000 cwt)
California	(D)	(D)	-	-	(D)	(D)	1,168	950
Other States ¹	(D)	(D)	96	118	(D)	(D)	746	643
United States	1,243	727	96	118	575	748	1,914	1,593

- Represents zero.

(D) Withheld to avoid disclosing data for individual operations.

¹ Other States include Arkansas, Louisiana, Mississippi, Missouri, and Texas.

² Screenings included with second heads in California.

Rough Rice Stocks by Length of Grain in All Positions – California: October 1, 2013 and 2014

State	Long		Medium		Short		Total	
	2013	2014	2013	2014	2013	2014	2013	2014
	(1,000 cwt)	(1,000 cwt)	(1,000 cwt)	(1,000 cwt)	(1,000 cwt)	(1,000 cwt)	(1,000 cwt)	(1,000 cwt)
California	(D)	(D)	2,029	6,691	(D)	(D)	2,926	7,538

(D) Withheld to avoid disclosing data for individual operations.

Milled Rice Stocks by Length of Grain in All Positions – California: October 1, 2013 and 2014

State	Whole kernels (head rice)							
	Long		Medium		Short		Total	
	2013	2014	2013	2014	2013	2014	2013	2014
	(1,000 cwt)	(1,000 cwt)	(1,000 cwt)	(1,000 cwt)	(1,000 cwt)	(1,000 cwt)	(1,000 cwt)	(1,000 cwt)
California	(D)	(D)	(D)	603	28	(D)	470	651
State	Broken kernels							
	Second heads		Screenings ¹		Brewers		Total	
	2013	2014	2013	2014	2013	2014	2013	2014
	(1,000 cwt)	(1,000 cwt)	(1,000 cwt)	(1,000 cwt)	(1,000 cwt)	(1,000 cwt)	(1,000 cwt)	(1,000 cwt)
California	(D)	(D)	-	-	(D)	(D)	740	462

- Represents zero.

(D) Withheld to avoid disclosing data for individual operations.

¹ Screenings included with second heads.

Rice Stocks by Position – States and United States: August 1, 2014

State	August 1, 2014		
	On farms	Off farms ¹	Total all positions
	(1,000 cwt)	(1,000 cwt)	(1,000 cwt)
Rough rice			
Arkansas	80	10,397	10,477
California	100	10,897	10,997
Louisiana	60	1,120	1,180
Mississippi	(D)	(D)	683
Missouri	(D)	(D)	806
Texas	(D)	(D)	2,461
Unallocated ²	65	3,885	-
United States	305	26,299	26,604
Milled rice			
Arkansas	(X)	1,379	1,379
California	(X)	1,420	1,420
Louisiana	(X)	(D)	(D)
Mississippi	(X)	(D)	(D)
Missouri	(X)	(D)	(D)
Texas	(X)	505	505
Unallocated ²	(X)	407	407
United States	(X)	3,711	3,711

- Represents zero.

(D) Withheld to avoid disclosing data for individual operations.

(X) Not applicable.

¹ Includes stocks at mills, elevators, warehouses, ports, and in transit.

² Unallocated includes State data withheld to avoid disclosure of individual operations.

Rice Stocks by Position – States and United States: June 1, 2014 and March 1, 2014

State	June 1, 2014			March 1, 2014		
	On farms	Off farms ¹	Total all positions	On farms	Off farms ¹	Total all positions
	(1,000 cwt)	(1,000 cwt)	(1,000 cwt)	(1,000 cwt)	(1,000 cwt)	(1,000 cwt)
Rough rice						
Arkansas	2,850	21,115	23,965	9,100	33,006	42,106
California	690	15,309	15,999	1,815	26,002	27,817
Louisiana	550	2,891	3,441	1,600	5,642	7,242
Mississippi	200	1,034	1,234	(D)	(D)	2,242
Missouri	200	1,613	1,813	(D)	(D)	3,338
Texas	340	3,559	3,899	820	5,389	6,209
Unallocated ²	-	-	-	1,660	3,920	-
United States	4,830	45,521	50,351	14,995	73,959	88,954
Milled rice						
Arkansas	(X)	1,481	1,481	(X)	1,430	1,430
California	(X)	2,666	2,666	(X)	2,716	2,716
Louisiana	(X)	547	547	(X)	(D)	(D)
Mississippi	(X)	234	234	(X)	(D)	(D)
Missouri	(X)	412	412	(X)	(D)	(D)
Texas	(X)	530	530	(X)	702	702
Unallocated ²	(X)	-	-	(X)	996	996
United States	(X)	5,870	5,870	(X)	5,844	5,844

- Represents zero.

(D) Withheld to avoid disclosing data for individual operations.

(X) Not applicable.

¹ Includes stocks at mills, elevators, warehouses, ports, and in transit.

² Unallocated includes State data withheld to avoid disclosure of individual operations.

Rough Rice Stocks in All Positions by Length of Grain and Month – States and United States: 2014

Date and State	Long (1,000 cwt)	Medium (1,000 cwt)	Short (1,000 cwt)	Total (1,000 cwt)
August 1				
California	(D)	9,833	(D)	10,997
Other States ¹	(D)	1,798	(D)	15,607
United States	14,010	11,631	963	26,604
June 1				
California	(D)	14,309	(D)	15,999
Other States ¹	(D)	2,985	(D)	34,352
United States	31,622	17,294	1,435	50,351
March 1				
California	(D)	25,113	(D)	27,817
Other States ¹	(D)	5,368	(D)	61,137
United States	56,125	30,481	2,348	88,954

(D) Withheld to avoid disclosing data for individual operations.

¹ Other States include Arkansas, Louisiana, Mississippi, Missouri, and Texas.

Milled Rice Stocks by Length of Grain in All Positions – States and United States: August 1, 2014

State	Whole kernels (head rice)			
	Long (1,000 cwt)	Medium (1,000 cwt)	Short (1,000 cwt)	Total (1,000 cwt)
California	(D)	(D)	(D)	436
Other States ¹	(D)	(D)	(D)	1,639
United States	1,556	472	47	2,075
State	Broken kernels			
	Second heads (1,000 cwt)	Screenings ² (1,000 cwt)	Brewers (1,000 cwt)	Total (1,000 cwt)
California	(D)	(D)	(D)	984
Other States ¹	(D)	(D)	(D)	652
United States	797	92	747	1,636

(D) Withheld to avoid disclosing data for individual operations.

¹ Other States include Arkansas, Louisiana, Mississippi, Missouri, and Texas.

² Screenings included with second heads in California.

Milled Rice Stocks by Length of Grain in All Positions – States and United States: June 1, 2014

State	Whole kernels (head rice)			
	Long (1,000 cwt)	Medium (1,000 cwt)	Short (1,000 cwt)	Total (1,000 cwt)
California	(D)	1,462	(D)	1,534
Other States ¹	(D)	139	(D)	2,516
United States	(D)	1,601	(D)	4,050
State	Broken kernels			
	Second heads (1,000 cwt)	Screenings ² (1,000 cwt)	Brewers (1,000 cwt)	Total (1,000 cwt)
California	(D)	(D)	(D)	1,132
Other States ¹	(D)	(D)	(D)	688
United States	1,159	72	589	1,820

(D) Withheld to avoid disclosing data for individual operations.

¹ Other States include Arkansas, Louisiana, Mississippi, Missouri, and Texas.

² Screenings included with second heads in California.

Milled Rice Stocks by Length of Grain in All Positions – States and United States: March 1, 2014

State	Whole kernels (head rice)			
	Long (1,000 cwt)	Medium (1,000 cwt)	Short (1,000 cwt)	Total (1,000 cwt)
California	(D)	1,490	(D)	1,541
Other States ¹	(D)	94	(D)	2,470
United States	2,379	1,584	48	4,011
State	Broken kernels			
	Second heads (1,000 cwt)	Screenings ² (1,000 cwt)	Brewers (1,000 cwt)	Total (1,000 cwt)
California	(D)	-	(D)	1,175
Other States ¹	(D)	118	(D)	658
United States	1,064	118	651	1,833

- Represents zero.

(D) Withheld to avoid disclosing data for individual operations.

¹ Other States include Arkansas, Louisiana, Mississippi, Missouri, and Texas.

² Screenings included with second heads in California.

Statistical Methodology

Survey Procedures: The rice stocks estimates in this report are based on surveys conducted during the first two weeks of December. Separate surveys were conducted to obtain the on-farm and off-farm estimates. The on-farm stocks survey is a probability survey based on a sampling procedure that ensures all operations storing rice in the United States have a chance to be selected. These producers were asked to provide the total quantities of grain stored on their operations as of December 1, 2014 regardless of ownership. Off-farm stocks are a census of all known rice storage facilities. An effort is made to obtain reports from all off-farm facilities. Estimates are made for missing facilities to assure complete coverage.

Estimating Procedures: On-farm and off-farm survey data are reviewed at the State and national levels for reasonableness, consistency with historical estimates, and current crop size. After estimates are made for on-farm and off-farm rice stocks, the total of these two are combined and evaluated using the balance sheet approach. This method utilizes other sources of data to check the reasonableness of the stocks estimates. Estimates of production, exports, and millings are reviewed to make sure beginning stocks, production, utilization, and ending stocks are within reasonable balance and present the best possible estimate of stocks.

Revision Policy: On-farm and off-farm stocks are subject to revision in the quarter following initial publication and again in the following December 1 *Rice Stocks* report published in January each year. Revisions can be made when late reports are received, errors are detected in reporting and calculating, and when production estimates are revised. Estimates will also be reviewed after data from the 5-year Census of Agriculture are available. No revisions to these years will be made after that date.

Reliability: Reliability of the on-farm and off-farm stocks must be treated separately because the survey designs for the two surveys are drastically different. The on-farm stocks estimates are subject to sampling variability because all operations holding on-farm stocks are not included in the sample.

Survey indications are also subject to non-sampling errors such as omission, duplication, imputation for missing data, and mistakes in reporting, recording, and processing the data. Off-farm, as well as on-farm stocks, are subject to these types of errors. These errors cannot be measured directly, but they are minimized through rigid quality controls in the data collection process and a careful review of all reported data for consistency and reasonableness.

Information Contacts

Listed below are the commodity statisticians in the Crops Branch of the National Agricultural Statistics Service to contact for additional information. E-mail inquiries may be sent to nass@nass.usda.gov

Lance Honig, Chief, Crops Branch	(202) 720-2127
Anthony Prillaman, Head, Field Crops Section	(202) 720-2127
Brent Chittenden – Oats, Rye, Wheat	(202) 720-8068
Angie Considine – Cotton, Cotton Ginnings, Sorghum	(202) 720-5944
Tony Dahlman – Crop Weather, Barley	(202) 720-7621
Chris Hawthorn – Corn, Flaxseed, Proso Millet	(202) 720-9526
James Johanson – County Estimates, Hay	(202) 690-8533
Anthony Prillaman – Peanuts, Rice	(202) 720-2127
Travis Thorson – Soybeans, Sunflower, Other Oilseeds	(202) 720-7369

Access to NASS Reports

For your convenience, you may access NASS reports and products the following ways:

- All reports are available electronically, at no cost, on the NASS web site: <http://www.nass.usda.gov>
- Both national and state specific reports are available via a free e-mail subscription. To set-up this free subscription, visit <http://www.nass.usda.gov> and in the “Follow NASS” box under “Receive reports by Email,” click on “National” or “State” to select the reports you would like to receive.

For more information on NASS surveys and reports, call the NASS Agricultural Statistics Hotline at (800) 727-9540, 7:30 a.m. to 4:00 p.m. ET, or e-mail: nass@nass.usda.gov.

The U.S. Department of Agriculture (USDA) prohibits discrimination against its customers, employees, and applicants for employment on the basis of race, color, national origin, age, disability, sex, gender identity, religion, reprisal, and where applicable, political beliefs, marital status, familial or parental status, sexual orientation, or all or part of an individual's income is derived from any public assistance program, or protected genetic information in employment or in any program or activity conducted or funded by the Department. (Not all prohibited bases will apply to all programs and/or employment activities.)

If you wish to file a Civil Rights program complaint of discrimination, complete the [USDA Program Discrimination Complaint Form](#) (PDF), found online at http://www.ascr.usda.gov/complaint_filing_cust.html, or at any USDA office, or call (866) 632-9992 to request the form. You may also write a letter containing all of the information requested in the form. Send your completed complaint form or letter to us by mail at U.S. Department of Agriculture, Director, Office of Adjudication, 1400 Independence Avenue, S.W., Washington, D.C. 20250-9410, by fax (202) 690-7442 or email at program.intake@usda.gov.



USDA 2015 Agricultural Outlook Forum

Smart Agriculture in the 21st Century

Crystal Gateway Marriott Hotel

Arlington, VA

Feb. 19-20, 2015

SAVE the Date!

The USDA Outlook Forum, first held in 1923, brings together renowned speakers including farmers, ranchers, economists, academics, statisticians, consultants, industry leaders, and government policymakers. The Secretary of Agriculture will present the keynote address, followed by a distinguished guest speaker. The economic outlook for the coming year will be presented by the USDA Chief Economist. In addition, a plenary panel of industry leaders will discuss an important topic relevant to agriculture.

- **February 19** includes a morning plenary, a networking luncheon, five concurrent afternoon sessions, and a dinner speaker.
- **February 20** includes a day of 5 concurrent sessions and luncheon speakers.

Session Topics are expected to include:

- Perspectives on Global & U.S. Trade
- Tomorrow's Opportunities
- Big Data
- Commodity Situation and Outlook
- Food Price & Farm Income Outlook
- Conservation & Regulation
- Water Issues
- Weather, Drought & Big Data
- Climate Change
- Moving Feed, Food & Fuel to Market
- 100-Year Anniversary of USDA Market News
- Nutrition & New Opportunities for Producers
- Regional Approaches to Rural Growth
- Bio-Economy
- Antimicrobial Resistance
- Agriculture & Bees
- Local Foods
- Food Waste

Register in November at: www.usda.gov/oc/forum