



Released January 12, 2015, by the National Agricultural Statistics Service (NASS), Agricultural Statistics Board, United States Department of Agriculture (USDA).

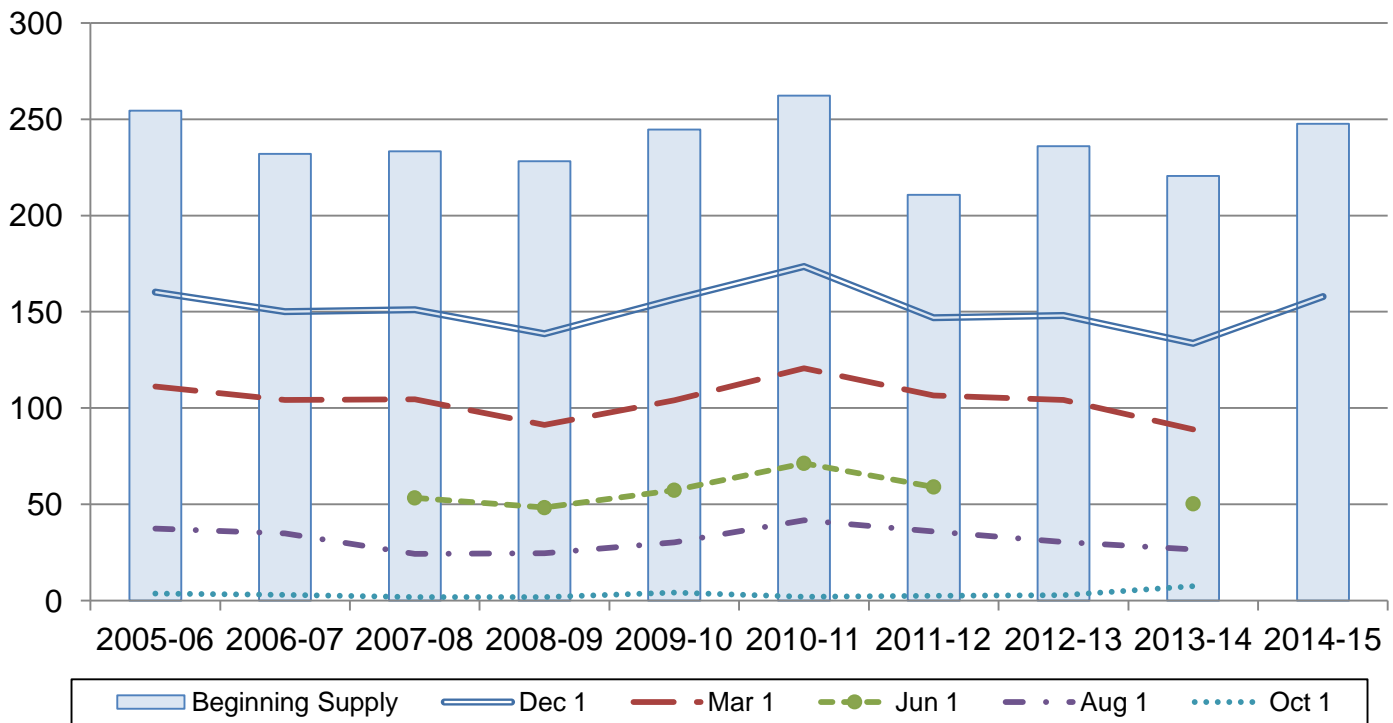
Rough Rice Stocks Up 18 Percent from December 2013

Rough rice stocks in all positions on December 1, 2014, totaled 158 million hundredweight (cwt), up 18 percent from the total on December 1, 2013. Stocks held on farms totaled 47.9 million cwt, and off-farm stocks totaled 110 million cwt. Long grain varieties accounted for 67 percent of the total rough rice, medium grain accounted for 31 percent, and short grain varieties accounted for 2 percent.

Milled rice stocks in all positions totaled 5.65 million cwt, down 15 percent from a year ago. Milled rice stocks were comprised of 4.05 million cwt of whole kernel rice and 1.59 million cwt of second heads, screenings, and brewers rice.

Rough Rice Stocks – United States

Million cwt



Rice Stocks by Position and Month – United States: 2013 and 2014 (Domestic Units)

| Date | 2013 | | | 2014 | | |
|------------------------------|-------------|------------------------|---------------------|-------------|------------------------|---------------------|
| | On farms | Off farms ¹ | Total all positions | On farms | Off farms ¹ | Total all positions |
| | (1,000 cwt) | (1,000 cwt) | (1,000 cwt) | (1,000 cwt) | (1,000 cwt) | (1,000 cwt) |
| Rough rice | | | | | | |
| March 1 | 18,430 | 85,839 | 104,269 | 14,995 | 73,959 | 88,954 |
| June 1 ² | (NA) | (NA) | (NA) | 4,830 | 45,521 | 50,351 |
| August 1 | 640 | 29,880 | 30,520 | 305 | 26,299 | 26,604 |
| October 1 ³ | 20 | 2,906 | 2,926 | 15 | 7,523 | 7,538 |
| December 1 | 36,935 | 96,636 | 133,571 | 47,865 | 110,061 | 157,926 |
| Milled rice | | | | | | |
| March 1 | (X) | 6,665 | 6,665 | (X) | 5,844 | 5,844 |
| June 1 ² | (X) | (NA) | (NA) | (X) | 5,870 | 5,870 |
| August 1 | (X) | 4,132 | 4,132 | (X) | 3,711 | 3,711 |
| October 1 ³ | (X) | 1,210 | 1,210 | (X) | 1,113 | 1,113 |
| December 1 | (X) | 6,605 | 6,605 | (X) | 5,646 | 5,646 |

(NA) Not available.

(X) Not applicable.

¹ Includes stocks at mills, elevators, warehouses, ports, and in transit.

² Estimates discontinued in 2013.

³ California only.

Rice Stocks by Position and Month – United States: 2013 and 2014 (Metric Units)

[Data may not add to totals due to rounding]

| Date | 2013 | | | 2014 | | |
|------------------------------|---------------|------------------------|---------------------|---------------|------------------------|---------------------|
| | On farms | Off farms ¹ | Total all positions | On farms | Off farms ¹ | Total all positions |
| | (metric tons) | (metric tons) | (metric tons) | (metric tons) | (metric tons) | (metric tons) |
| Rough rice | | | | | | |
| March 1 | 835,970 | 3,893,590 | 4,729,560 | 680,160 | 3,354,720 | 4,034,890 |
| June 1 ² | (NA) | (NA) | (NA) | 219,090 | 2,064,800 | 2,283,880 |
| August 1 | 29,030 | 1,355,330 | 1,384,360 | 13,830 | 1,192,900 | 1,206,740 |
| October 1 ³ | 910 | 131,810 | 132,720 | 680 | 341,240 | 341,920 |
| December 1 | 1,675,340 | 4,383,340 | 6,058,680 | 2,171,120 | 4,992,280 | 7,163,400 |
| Milled rice | | | | | | |
| March 1 | (X) | 302,320 | 302,320 | (X) | 265,080 | 265,080 |
| June 1 ² | (X) | (NA) | (NA) | (X) | 266,260 | 266,260 |
| August 1 | (X) | 187,420 | 187,420 | (X) | 168,330 | 168,330 |
| October 1 ³ | (X) | 54,880 | 54,880 | (X) | 50,480 | 50,480 |
| December 1 | (X) | 299,600 | 299,600 | (X) | 256,100 | 256,100 |

(NA) Not available.

(X) Not applicable.

¹ Includes stocks at mills, elevators, warehouses, ports, and in transit.

² Estimates discontinued in 2013.

³ California only.

Rice Stocks by Position – States and United States: December 1, 2013 and 2014

| State | 2013 | | | 2014 | | |
|--------------------------------|-------------|------------------------|---------------------|-------------|------------------------|---------------------|
| | On farms | Off farms ¹ | Total all positions | On farms | Off farms ¹ | Total all positions |
| | (1,000 cwt) | (1,000 cwt) | (1,000 cwt) | (1,000 cwt) | (1,000 cwt) | (1,000 cwt) |
| Rough rice | | | | | | |
| Arkansas | 18,000 | 38,805 | 56,805 | 22,500 | 51,622 | 74,122 |
| California | 3,120 | 38,294 | 41,414 | 3,415 | 36,001 | 39,416 |
| Louisiana | 8,150 | 7,281 | 15,431 | 11,100 | 9,578 | 20,678 |
| Mississippi | (D) | (D) | 3,486 | 4,000 | 2,100 | 6,100 |
| Missouri | (D) | (D) | 7,893 | (D) | (D) | 8,842 |
| Texas | 1,650 | 6,892 | 8,542 | (D) | (D) | 8,768 |
| Unallocated ² | 6,015 | 5,364 | - | 6,850 | 10,760 | - |
| United States | 36,935 | 96,636 | 133,571 | 47,865 | 110,061 | 157,926 |
| Milled rice | | | | | | |
| Arkansas | (X) | (D) | (D) | (X) | 1,714 | 1,714 |
| California | (X) | 2,337 | 2,337 | (X) | 2,490 | 2,490 |
| Louisiana | (X) | (D) | (D) | (X) | (D) | (D) |
| Mississippi | (X) | (D) | (D) | (X) | (D) | (D) |
| Missouri | (X) | (D) | (D) | (X) | (D) | (D) |
| Texas | (X) | 687 | 687 | (X) | 547 | 547 |
| Unallocated ² | (X) | 3,581 | 3,581 | (X) | 895 | 895 |
| United States | (X) | 6,605 | 6,605 | (X) | 5,646 | 5,646 |

- Represents zero.

(D) Withheld to avoid disclosing data for individual operations.

(X) Not applicable.

¹ Includes stocks at mills, elevators, warehouses, ports, and in transit.

² Unallocated includes State data withheld to avoid disclosure of individual operations.

**Rough Rice Stocks by Length of Grain in All Positions – States and United States:
December 1, 2013 and 2014**

| State | Long | | Medium | | Short | | Total | |
|---------------------------------|-------------|-------------|-------------|-------------|-------------|-------------|-------------|-------------|
| | 2013 | 2014 | 2013 | 2014 | 2013 | 2014 | 2013 | 2014 |
| | (1,000 cwt) | (1,000 cwt) | (1,000 cwt) | (1,000 cwt) | (1,000 cwt) | (1,000 cwt) | (1,000 cwt) | (1,000 cwt) |
| California | (D) | (D) | 37,632 | 36,358 | (D) | (D) | 41,414 | 39,416 |
| Other States ¹ | (D) | (D) | 7,454 | 12,125 | (D) | (D) | 92,157 | 118,510 |
| United States | 85,149 | 106,786 | 45,086 | 48,483 | 3,336 | 2,657 | 133,571 | 157,926 |

(D) Withheld to avoid disclosing data for individual operations.

¹ Other States include Arkansas, Louisiana, Mississippi, Missouri, and Texas.

**Milled Rice Stocks by Length of Grain in All Positions – States and United States:
December 1, 2013 and 2014**

| State | Whole kernels (head rice) | | | | | | | |
|---------------------------------|---------------------------|-------------|-------------------------|-------------|-------------|-------------|-------------|-------------|
| | Long | | Medium | | Short | | Total | |
| | 2013 | 2014 | 2013 | 2014 | 2013 | 2014 | 2013 | 2014 |
| | (1,000 cwt) | (1,000 cwt) | (1,000 cwt) | (1,000 cwt) | (1,000 cwt) | (1,000 cwt) | (1,000 cwt) | (1,000 cwt) |
| California | (D) | (D) | 1,110 | 1,487 | (D) | (D) | 1,169 | 1,540 |
| Other States ¹ | (D) | (D) | 175 | 207 | (D) | (D) | 3,522 | 2,513 |
| United States | 3,348 | 2,308 | 1,285 | 1,694 | 58 | 51 | 4,691 | 4,053 |
| State | Broken kernels | | | | | | | |
| | Second heads | | Screenings ² | | Brewers | | Total | |
| | 2013 | 2014 | 2013 | 2014 | 2013 | 2014 | 2013 | 2014 |
| | (1,000 cwt) | (1,000 cwt) | (1,000 cwt) | (1,000 cwt) | (1,000 cwt) | (1,000 cwt) | (1,000 cwt) | (1,000 cwt) |
| California | (D) | (D) | - | - | (D) | (D) | 1,168 | 950 |
| Other States ¹ | (D) | (D) | 96 | 118 | (D) | (D) | 746 | 643 |
| United States | 1,243 | 727 | 96 | 118 | 575 | 748 | 1,914 | 1,593 |

- Represents zero.

(D) Withheld to avoid disclosing data for individual operations.

¹ Other States include Arkansas, Louisiana, Mississippi, Missouri, and Texas.

² Screenings included with second heads in California.

Rough Rice Stocks by Length of Grain in All Positions – California: October 1, 2013 and 2014

| State | Long | | Medium | | Short | | Total | |
|------------------|-------------|-------------|-------------|-------------|-------------|-------------|-------------|-------------|
| | 2013 | 2014 | 2013 | 2014 | 2013 | 2014 | 2013 | 2014 |
| | (1,000 cwt) | (1,000 cwt) | (1,000 cwt) | (1,000 cwt) | (1,000 cwt) | (1,000 cwt) | (1,000 cwt) | (1,000 cwt) |
| California | (D) | (D) | 2,029 | 6,691 | (D) | (D) | 2,926 | 7,538 |

(D) Withheld to avoid disclosing data for individual operations.

Milled Rice Stocks by Length of Grain in All Positions – California: October 1, 2013 and 2014

| State | Whole kernels (head rice) | | | | | | | |
|------------------|---------------------------|-------------|-------------------------|-------------|-------------|-------------|-------------|-------------|
| | Long | | Medium | | Short | | Total | |
| | 2013 | 2014 | 2013 | 2014 | 2013 | 2014 | 2013 | 2014 |
| | (1,000 cwt) | (1,000 cwt) | (1,000 cwt) | (1,000 cwt) | (1,000 cwt) | (1,000 cwt) | (1,000 cwt) | (1,000 cwt) |
| California | (D) | (D) | (D) | 603 | 28 | (D) | 470 | 651 |
| State | Broken kernels | | | | | | | |
| | Second heads | | Screenings ¹ | | Brewers | | Total | |
| | 2013 | 2014 | 2013 | 2014 | 2013 | 2014 | 2013 | 2014 |
| | (1,000 cwt) | (1,000 cwt) | (1,000 cwt) | (1,000 cwt) | (1,000 cwt) | (1,000 cwt) | (1,000 cwt) | (1,000 cwt) |
| California | (D) | (D) | - | - | (D) | (D) | 740 | 462 |

- Represents zero.

(D) Withheld to avoid disclosing data for individual operations.

¹ Screenings included with second heads.

Rice Stocks by Position – States and United States: August 1, 2014

| State | August 1, 2014 | | |
|--------------------------------|----------------|------------------------|---------------------|
| | On farms | Off farms ¹ | Total all positions |
| | (1,000 cwt) | (1,000 cwt) | (1,000 cwt) |
| Rough rice | | | |
| Arkansas | 80 | 10,397 | 10,477 |
| California | 100 | 10,897 | 10,997 |
| Louisiana | 60 | 1,120 | 1,180 |
| Mississippi | (D) | (D) | 683 |
| Missouri | (D) | (D) | 806 |
| Texas | (D) | (D) | 2,461 |
| Unallocated ² | 65 | 3,885 | - |
| United States | 305 | 26,299 | 26,604 |
| Milled rice | | | |
| Arkansas | (X) | 1,379 | 1,379 |
| California | (X) | 1,420 | 1,420 |
| Louisiana | (X) | (D) | (D) |
| Mississippi | (X) | (D) | (D) |
| Missouri | (X) | (D) | (D) |
| Texas | (X) | 505 | 505 |
| Unallocated ² | (X) | 407 | 407 |
| United States | (X) | 3,711 | 3,711 |

- Represents zero.

(D) Withheld to avoid disclosing data for individual operations.

(X) Not applicable.

¹ Includes stocks at mills, elevators, warehouses, ports, and in transit.

² Unallocated includes State data withheld to avoid disclosure of individual operations.

Rice Stocks by Position – States and United States: June 1, 2014 and March 1, 2014

| State | June 1, 2014 | | | March 1, 2014 | | |
|--------------------------------|--------------|------------------------|---------------------|---------------|------------------------|---------------------|
| | On farms | Off farms ¹ | Total all positions | On farms | Off farms ¹ | Total all positions |
| | (1,000 cwt) | (1,000 cwt) | (1,000 cwt) | (1,000 cwt) | (1,000 cwt) | (1,000 cwt) |
| Rough rice | | | | | | |
| Arkansas | 2,850 | 21,115 | 23,965 | 9,100 | 33,006 | 42,106 |
| California | 690 | 15,309 | 15,999 | 1,815 | 26,002 | 27,817 |
| Louisiana | 550 | 2,891 | 3,441 | 1,600 | 5,642 | 7,242 |
| Mississippi | 200 | 1,034 | 1,234 | (D) | (D) | 2,242 |
| Missouri | 200 | 1,613 | 1,813 | (D) | (D) | 3,338 |
| Texas | 340 | 3,559 | 3,899 | 820 | 5,389 | 6,209 |
| Unallocated ² | - | - | - | 1,660 | 3,920 | - |
| United States | 4,830 | 45,521 | 50,351 | 14,995 | 73,959 | 88,954 |
| Milled rice | | | | | | |
| Arkansas | (X) | 1,481 | 1,481 | (X) | 1,430 | 1,430 |
| California | (X) | 2,666 | 2,666 | (X) | 2,716 | 2,716 |
| Louisiana | (X) | 547 | 547 | (X) | (D) | (D) |
| Mississippi | (X) | 234 | 234 | (X) | (D) | (D) |
| Missouri | (X) | 412 | 412 | (X) | (D) | (D) |
| Texas | (X) | 530 | 530 | (X) | 702 | 702 |
| Unallocated ² | (X) | - | - | (X) | 996 | 996 |
| United States | (X) | 5,870 | 5,870 | (X) | 5,844 | 5,844 |

- Represents zero.

(D) Withheld to avoid disclosing data for individual operations.

(X) Not applicable.

¹ Includes stocks at mills, elevators, warehouses, ports, and in transit.

² Unallocated includes State data withheld to avoid disclosure of individual operations.

Rough Rice Stocks in All Positions by Length of Grain and Month – States and United States: 2014

| Date and State | Long (1,000 cwt) | Medium (1,000 cwt) | Short (1,000 cwt) | Total (1,000 cwt) |
|---------------------------------|---------------------|-----------------------|----------------------|----------------------|
| August 1 | | | | |
| California | (D) | 9,833 | (D) | 10,997 |
| Other States ¹ | (D) | 1,798 | (D) | 15,607 |
| United States | 14,010 | 11,631 | 963 | 26,604 |
| June 1 | | | | |
| California | (D) | 14,309 | (D) | 15,999 |
| Other States ¹ | (D) | 2,985 | (D) | 34,352 |
| United States | 31,622 | 17,294 | 1,435 | 50,351 |
| March 1 | | | | |
| California | (D) | 25,113 | (D) | 27,817 |
| Other States ¹ | (D) | 5,368 | (D) | 61,137 |
| United States | 56,125 | 30,481 | 2,348 | 88,954 |

(D) Withheld to avoid disclosing data for individual operations.

¹ Other States include Arkansas, Louisiana, Mississippi, Missouri, and Texas.

Milled Rice Stocks by Length of Grain in All Positions – States and United States: August 1, 2014

| State | Whole kernels (head rice) | | | |
|---------------------------------|-----------------------------|--|------------------------|----------------------|
| | Long (1,000 cwt) | Medium (1,000 cwt) | Short (1,000 cwt) | Total (1,000 cwt) |
| California | (D) | (D) | (D) | 436 |
| Other States ¹ | (D) | (D) | (D) | 1,639 |
| United States | 1,556 | 472 | 47 | 2,075 |
| State | Broken kernels | | | |
| | Second heads (1,000 cwt) | Screenings ² (1,000 cwt) | Brewers (1,000 cwt) | Total (1,000 cwt) |
| California | (D) | (D) | (D) | 984 |
| Other States ¹ | (D) | (D) | (D) | 652 |
| United States | 797 | 92 | 747 | 1,636 |

(D) Withheld to avoid disclosing data for individual operations.

¹ Other States include Arkansas, Louisiana, Mississippi, Missouri, and Texas.

² Screenings included with second heads in California.

Milled Rice Stocks by Length of Grain in All Positions – States and United States: June 1, 2014

| State | Whole kernels (head rice) | | | |
|---------------------------------|-----------------------------|--|------------------------|----------------------|
| | Long (1,000 cwt) | Medium (1,000 cwt) | Short (1,000 cwt) | Total (1,000 cwt) |
| California | (D) | 1,462 | (D) | 1,534 |
| Other States ¹ | (D) | 139 | (D) | 2,516 |
| United States | (D) | 1,601 | (D) | 4,050 |
| State | Broken kernels | | | |
| | Second heads (1,000 cwt) | Screenings ² (1,000 cwt) | Brewers (1,000 cwt) | Total (1,000 cwt) |
| California | (D) | (D) | (D) | 1,132 |
| Other States ¹ | (D) | (D) | (D) | 688 |
| United States | 1,159 | 72 | 589 | 1,820 |

(D) Withheld to avoid disclosing data for individual operations.

¹ Other States include Arkansas, Louisiana, Mississippi, Missouri, and Texas.

² Screenings included with second heads in California.

Milled Rice Stocks by Length of Grain in All Positions – States and United States: March 1, 2014

| State | Whole kernels (head rice) | | | |
|---------------------------------|-----------------------------|--|------------------------|----------------------|
| | Long (1,000 cwt) | Medium (1,000 cwt) | Short (1,000 cwt) | Total (1,000 cwt) |
| California | (D) | 1,490 | (D) | 1,541 |
| Other States ¹ | (D) | 94 | (D) | 2,470 |
| United States | 2,379 | 1,584 | 48 | 4,011 |
| State | Broken kernels | | | |
| | Second heads (1,000 cwt) | Screenings ² (1,000 cwt) | Brewers (1,000 cwt) | Total (1,000 cwt) |
| California | (D) | - | (D) | 1,175 |
| Other States ¹ | (D) | 118 | (D) | 658 |
| United States | 1,064 | 118 | 651 | 1,833 |

- Represents zero.

(D) Withheld to avoid disclosing data for individual operations.

¹ Other States include Arkansas, Louisiana, Mississippi, Missouri, and Texas.

² Screenings included with second heads in California.

Statistical Methodology

Survey Procedures: The rice stocks estimates in this report are based on surveys conducted during the first two weeks of December. Separate surveys were conducted to obtain the on-farm and off-farm estimates. The on-farm stocks survey is a probability survey based on a sampling procedure that ensures all operations storing rice in the United States have a chance to be selected. These producers were asked to provide the total quantities of grain stored on their operations as of December 1, 2014 regardless of ownership. Off-farm stocks are a census of all known rice storage facilities. An effort is made to obtain reports from all off-farm facilities. Estimates are made for missing facilities to assure complete coverage.

Estimating Procedures: On-farm and off-farm survey data are reviewed at the State and national levels for reasonableness, consistency with historical estimates, and current crop size. After estimates are made for on-farm and off-farm rice stocks, the total of these two are combined and evaluated using the balance sheet approach. This method utilizes other sources of data to check the reasonableness of the stocks estimates. Estimates of production, exports, and millings are reviewed to make sure beginning stocks, production, utilization, and ending stocks are within reasonable balance and present the best possible estimate of stocks.

Revision Policy: On-farm and off-farm stocks are subject to revision in the quarter following initial publication and again in the following December 1 *Rice Stocks* report published in January each year. Revisions can be made when late reports are received, errors are detected in reporting and calculating, and when production estimates are revised. Estimates will also be reviewed after data from the 5-year Census of Agriculture are available. No revisions to these years will be made after that date.

Reliability: Reliability of the on-farm and off-farm stocks must be treated separately because the survey designs for the two surveys are drastically different. The on-farm stocks estimates are subject to sampling variability because all operations holding on-farm stocks are not included in the sample.

Survey indications are also subject to non-sampling errors such as omission, duplication, imputation for missing data, and mistakes in reporting, recording, and processing the data. Off-farm, as well as on-farm stocks, are subject to these types of errors. These errors cannot be measured directly, but they are minimized through rigid quality controls in the data collection process and a careful review of all reported data for consistency and reasonableness.

Information Contacts

Listed below are the commodity statisticians in the Crops Branch of the National Agricultural Statistics Service to contact for additional information. E-mail inquiries may be sent to nass@nass.usda.gov

| | |
|--|----------------|
| Lance Honig, Chief, Crops Branch | (202) 720-2127 |
| Anthony Prillaman, Head, Field Crops Section | (202) 720-2127 |
| Brent Chittenden – Oats, Rye, Wheat | (202) 720-8068 |
| Angie Considine – Cotton, Cotton Ginnings, Sorghum | (202) 720-5944 |
| Tony Dahlman – Crop Weather, Barley | (202) 720-7621 |
| Chris Hawthorn – Corn, Flaxseed, Proso Millet | (202) 720-9526 |
| James Johanson – County Estimates, Hay | (202) 690-8533 |
| Anthony Prillaman – Peanuts, Rice | (202) 720-2127 |
| Travis Thorson – Soybeans, Sunflower, Other Oilseeds | (202) 720-7369 |

Access to NASS Reports

For your convenience, you may access NASS reports and products the following ways:

- All reports are available electronically, at no cost, on the NASS web site: <http://www.nass.usda.gov>
- Both national and state specific reports are available via a free e-mail subscription. To set-up this free subscription, visit <http://www.nass.usda.gov> and in the “Follow NASS” box under “Receive reports by Email,” click on “National” or “State” to select the reports you would like to receive.

For more information on NASS surveys and reports, call the NASS Agricultural Statistics Hotline at (800) 727-9540, 7:30 a.m. to 4:00 p.m. ET, or e-mail: nass@nass.usda.gov.

The U.S. Department of Agriculture (USDA) prohibits discrimination against its customers, employees, and applicants for employment on the basis of race, color, national origin, age, disability, sex, gender identity, religion, reprisal, and where applicable, political beliefs, marital status, familial or parental status, sexual orientation, or all or part of an individual's income is derived from any public assistance program, or protected genetic information in employment or in any program or activity conducted or funded by the Department. (Not all prohibited bases will apply to all programs and/or employment activities.)

If you wish to file a Civil Rights program complaint of discrimination, complete the [USDA Program Discrimination Complaint Form](#) (PDF), found online at http://www.ascr.usda.gov/complaint_filing_cust.html, or at any USDA office, or call (866) 632-9992 to request the form. You may also write a letter containing all of the information requested in the form. Send your completed complaint form or letter to us by mail at U.S. Department of Agriculture, Director, Office of Adjudication, 1400 Independence Avenue, S.W., Washington, D.C. 20250-9410, by fax (202) 690-7442 or email at program.intake@usda.gov.



USDA 2015 Agricultural Outlook Forum

Smart Agriculture in the 21st Century

Crystal Gateway Marriott Hotel

Arlington, VA

Feb. 19-20, 2015

SAVE the Date!

The USDA Outlook Forum, first held in 1923, brings together renowned speakers including farmers, ranchers, economists, academics, statisticians, consultants, industry leaders, and government policymakers. The Secretary of Agriculture will present the keynote address, followed by a distinguished guest speaker. The economic outlook for the coming year will be presented by the USDA Chief Economist. In addition, a plenary panel of industry leaders will discuss an important topic relevant to agriculture.

- **February 19** includes a morning plenary, a networking luncheon, five concurrent afternoon sessions, and a dinner speaker.
- **February 20** includes a day of 5 concurrent sessions and luncheon speakers.

Session Topics are expected to include:

- Perspectives on Global & U.S. Trade
- Tomorrow's Opportunities
- Big Data
- Commodity Situation and Outlook
- Food Price & Farm Income Outlook
- Conservation & Regulation
- Water Issues
- Weather, Drought & Big Data
- Climate Change
- Moving Feed, Food & Fuel to Market
- 100-Year Anniversary of USDA Market News
- Nutrition & New Opportunities for Producers
- Regional Approaches to Rural Growth
- Bio-Economy
- Antimicrobial Resistance
- Agriculture & Bees
- Local Foods
- Food Waste

Register in November at: www.usda.gov/oc/forum