



Agricultural Prices

ISSN: 1937-4216

Released March 29, 2012, by the National Agricultural Statistics Service (NASS), Agricultural Statistics Board, United States Department of Agriculture (USDA).

March Farm Prices Received Index Up 5 Points

The preliminary All Farm Products Index of Prices Received by Farmers in March, at 186 percent, based on 1990-1992=100, increased 5 points (2.8 percent) from February. The Crop Index is up 8 points (3.9 percent) and the Livestock Index increased 3 points (1.9 percent). Producers received higher prices for soybeans, corn, broilers, and cattle and lower prices for milk, strawberries, snap beans, and lettuce. In addition to prices, the overall index is affected by the seasonal change based on a 3-year average mix of commodities producers sell. Increased monthly movement of soybeans, strawberries, broilers, and milk offset decreased marketings of corn, cattle, cotton, and wheat.

The preliminary All Farm Products Index is up 13 points (7.5 percent) from March 2011. The Food Commodities Index, at 173, increased 5 points (3.0 percent) from last month and March 2011.

Prices Paid Index up 1 Point

The March Index of Prices Paid for Commodities and Services, Interest, Taxes, and Farm Wage Rates (PPITW) is 210 percent of the 1990-1992 average. The index is up 1 point (0.5 percent) from February and 9 points (4.5 percent) above March 2011. Compared with February, higher prices in March for diesel, gasoline, feed grains, and concentrates offset lower prices for nitrogen, potash & phosphate, feeder cattle, and supplements.

Prices Received, Prices Paid, and Ratio of Prices Received to Prices Paid Indexes 1990-1992 Base – United States: March 2012 with Comparisons

Index	March 2011	February 2012	March 2012
Prices received by farmers	173	181	186
Prices paid by farmers	201	209	210
Ratio of prices received to prices paid	86	87	89

Contents

Prices Received by Farmers	4
Prices Received Indexes – United States: March 2012 with Comparisons	5
Prices Received and Prices Paid Indexes by Month for Selected Groups – United States: 2011 and 2012, 1990-1992 Base	5
Received Indexes by Month, Livestock Products, All Products, and All Crops – United States: 1990-1992=100 Chart.....	6
Received Indexes by Month, Food Grains, Feed Grains & Hay, and Oilseeds – United States: 1990-1992=100 Chart.....	6
Received Indexes by Month, Fruit & Nut and Commercial Vegetables – United States: 1990-1992=100 Chart.....	7
Received Indexes by Month, Meat Animal, Dairy Products, and Poultry & Eggs – United States: 1990-1992=100 Chart.....	7
Prices Received for Field Crops and Fruits – United States: March 2012 with Comparisons.....	8
Prices Received for Vegetables and Livestock – United States: March 2012 with Comparisons	9
Prices Received for Corn by Month – United States Chart.....	10
Prices Received for Wheat by Month – United States Chart	10
Prices Received for Upland Cotton by Month – United States Chart	11
Prices Received for Soybeans by Month – United States Chart	11
Prices Received for Cattle by Month – United States Chart	12
Prices Received for Milk by Month – United States Chart.....	12
Prices Received for Hogs by Month – United States Chart	13
Prices Received for Poultry by Month – United States Chart.....	13
Prices Received for All Wheat, Corn, and Soybeans by Month – United States: 2012 with Comparisons.....	14
Prices Received for Beef Cattle and All Hogs by Month – United States: 2012 with Comparisons	14
Prices Received for All Wheat – States and United States: March 2012 with Comparisons.....	15
Prices Received for Winter Wheat – States and United States: March 2012 with Comparisons.....	15
Prices Received for Durum Wheat – States and United States: March 2012 with Comparisons.....	16
Prices Received for Spring Wheat – States and United States: March 2012 with Comparisons	16
Prices Received for All Barley – States and United States: March 2012 with Comparisons.....	17
Prices Received for Malting Barley – States: March 2012 with Comparisons	17
Prices Received for Feed Barley – States: March 2012 with Comparisons	17
Prices Received for Corn – States and United States: March 2012 with Comparisons	18
Prices Received for Soybeans – States and United States: March 2012 with Comparisons	18
Prices Received for Oats – States and United States: March 2012 with Comparisons	19
Prices Received for Sorghum Grain – States and United States: March 2012 with Comparisons.....	19
Prices Received for Dry Beans – States and United States: March 2012 with Comparisons	20
Prices Received for Peanuts (In-Shell) – States and United States: March 2012 with Comparisons	20
Prices Received for Sunflower – States and United States: March 2012 with Comparisons.....	21
Prices Received for Canola – States and United States: March 2012 with Comparisons.....	21
Prices Received for Flaxseed – States and United States: March 2012 with Comparisons	21
Prices Received for Upland Cotton and Cottonseed – States and United States: March 2012 with Comparisons.....	22
Prices Received and Farm Marketings for Upland Cotton and Rice – United States: March 2012 with Comparisons	22
Prices Received for Hay by Type – States and United States: March 2012 with Comparisons	23
Prices Received for Apples – States and United States: March 2012 with Comparisons	23
Prices Received for Citrus Fruits by Utilization – States and United States: March 2011	24
Prices Received for Citrus Fruits by Utilization – States and United States: February 2012	25
Prices Received for Citrus Fruits by Utilization – States and United States: March 2012	26
Prices Received for Potatoes – States and United States: March 2012 with Comparisons.....	27
Prices Received for All Milk – States and United States: March 2012 with Comparisons.....	28
Prices Received for Milk Cows – States and United States: January 2012 with Comparisons.....	29
Commodity Parity Prices and Price as Percent of Parity Price – United States: March 2012 with Comparisons	30

Commodity Parity Prices – United States: March 2012 with Comparisons	31
Reliability of Prices Received Estimates	33
Prices Paid by Farmers.....	34
Prices Paid Indexes and Related Parity Ratios – United States: March 2012 with Comparisons.....	35
Prices Paid Indexes and Annual Weights for Input Components and Sub-Components – United States: March 2012 with Comparisons.....	36
Paid Indexes by Month, All Items and Production Items – United States: 1990-1992=100 Chart	37
Paid Indexes, Annual Averages, Production Items, Interest, Taxes, and Wages – United States: 1990-1992=100 Chart	37
Paid Indexes by Farm Type, All Items – United States: 1990-1991=100 Chart.....	38
Paid Indexes by Origin, All Production Items – United States: 1990-1992=100 Chart	38
Paid Indexes by Non-Farm Sector, Supplies & Repairs, Fertilizer, Machinery, and Fuel – United States: 1990-1992=100 Chart	39
Paid Indexes by Month, Feed and Replacement Livestock – United States: 1990-1992=100 Chart.....	39
Feed Price Ratios – United States: March 2012 with Comparisons	40
Prices Received Used to Calculate Feed Price Ratios – United States: March 2012 with Comparisons.....	40
Prices Paid for Feeder Livestock – United States: March 2012 with Comparisons.....	40
Reliability of Prices Paid Estimates	41
Information Contacts	42

Prices Received by Farmers

The March All Farm Products Index is 186 percent of its 1990-1992 base, up 2.8 percent from the February index and 7.5 percent above the March 2011 index.

All crops: The March index, at 213, increased 3.9 percent from February and is 7.6 percent above March 2011. The index groups with the largest contributions to the increase were feed grains & hay, oilseeds, commercial vegetables, and fruits & nuts.

Food grains: The March index, at 230, is 1.8 percent above the previous month but 1.3 percent below a year ago. The price of March all wheat, at \$7.24 per bushel, is up 14 cents from February but 31 cents below March 2011.

Feed grains & hay: The March index, at 276, increased 3.0 percent from last month and is 20 percent above a year ago. The corn price, at \$6.48 per bushel, is up 20 cents from last month and 95 cents above March 2011. The all hay price, at \$181 per ton, is \$5.00 higher than February and \$55.00 higher than March 2011. Sorghum grain, at \$11.30 per cwt, increased 50 cents from February and 70 cents from March last year.

Cotton, Upland: The March index, at 154, is up 1.3 percent from February and 11 percent above last year. The March price, at 93.6 cents per pound, is up 1.2 cents from the previous month and 9.2 cents above last March.

Oilseeds: The March index, at 235, increased 6.8 percent from February and is 3.1 percent higher than March 2011. The soybean price, at \$13.10 per bushel, increased 90 cents from February and is 40 cents higher than March 2011.

Fruits & nuts: The March index, at 163, is 5.2 percent higher than February and 13 percent above a year ago. The price increases for oranges and apples more than offset price decreases for strawberries and pears.

Commercial vegetables: The March index, at 129, increased 15 percent from last month but is 39 percent below March 2011. Price increases during March for tomatoes and broccoli more than offset price declines for snap beans and lettuce.

Potatoes & dry beans: The March index, at 180, is up 3.4 percent from last month but 0.6 percent below March 2011. The all potato price, at \$9.74 per cwt, is up 43 cents from February but down \$1.00 from last March. The all dry bean price, at \$49.00 per cwt, is up \$2.30 from the previous month and \$19.10 above March 2011.

Livestock and products: The March index, at 161, is 1.9 percent above last month and 5.9 percent higher than March 2011. Compared with a year ago, prices are higher for cattle, broilers, eggs, calves, hogs, and turkeys. The price for milk is down from last year.

Meat animals: The March index, at 169, is up 1.8 percent from last month and 12 percent higher than last year. The March hog price, at \$65.70 per cwt, is up 20 cents from February and \$2.80 higher than a year ago. The March beef cattle price of \$130 per cwt is up \$3.00 from last month and \$15.00 higher than March 2011.

Dairy products: The March index, at 133, is down 2.2 percent from a month ago and 15 percent lower than March last year. The March all milk price of \$17.40 per cwt is 30 cents lower than last month and down \$3.00 from March 2011.

Poultry & eggs: The March index, at 174, is up 8.1 percent from February and 16 percent above a year ago. The March market egg price, at 79.1 cents per dozen, increased 12.2 cents from February and is 13.9 cents above March 2011. The March broiler price, at 57.0 cents per pound, is up 4.0 cents from February and 8.0 cents above a year ago. The March turkey price, at 68.5 cents per pound, is up 3.5 cents from the previous month and 8.6 cents from a year earlier.

Prices Received Indexes – United States: March 2012 with Comparisons

[Revised historical price indexes for months not shown are available at www.nass.usda.gov]

Index	1910-1914 Base				1990-1992 Base		
	1990-1992 Average	March 2011	February 2012	March 2012	March 2011	February 2012	March 2012
	(percent)	(percent)	(percent)	(percent)	(percent)	(percent)	(percent)
All products	639	1100	1148	1179	173	181	186
All crops	500	979	1018	1054	198	205	213
Food grains	325	739	715	730	233	226	230
Feed grains & hay	363	820	955	984	230	268	276
Cotton, Upland	517	714	782	792	139	152	154
Tobacco	1263	1491	1566	1566	99	104	104
Oilseeds	554	1250	1208	1288	228	220	235
Fruits & nuts	716	1007	1079	1138	144	155	163
Commercial vegetables	698	1523	803	922	213	112	129
Potatoes & dry beans	540	915	881	914	181	174	180
Other crops	493	643	645	645	131	131	131
Livestock and products	768	1166	1208	1234	152	158	161
Meat animals	1021	1538	1694	1717	151	166	169
Dairy products	799	1255	1089	1071	156	136	133
Poultry & eggs	282	421	452	489	150	161	174
Food commodities	(NA)	(NA)	(NA)	(NA)	168	168	173

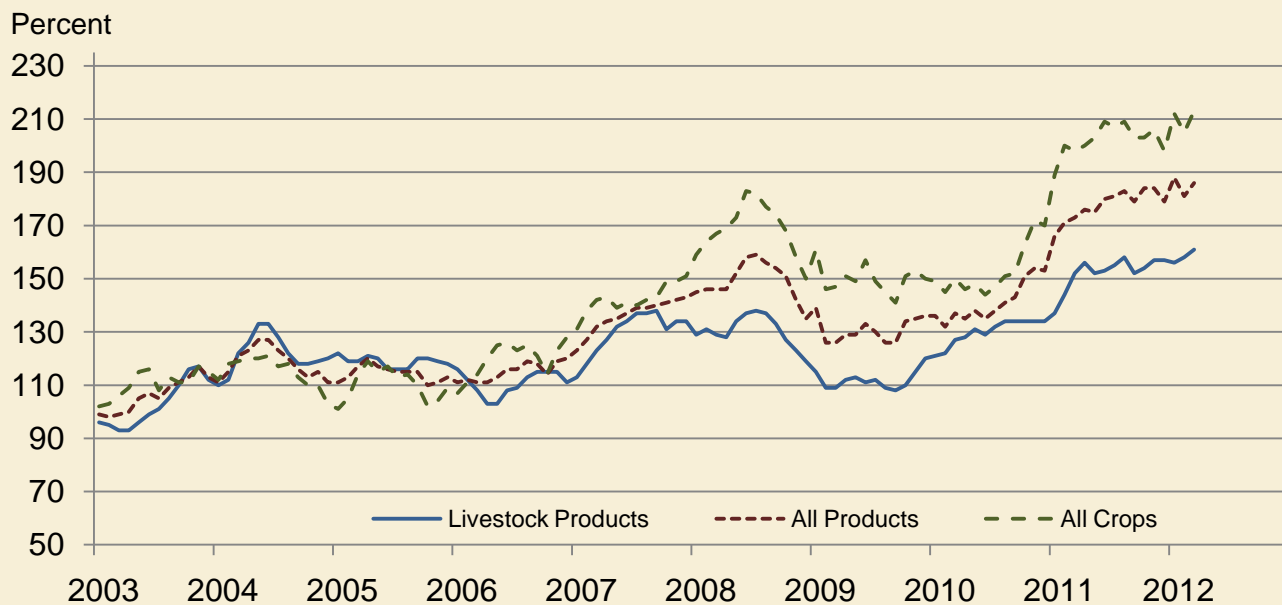
(NA) Not available.

Prices Received and Prices Paid Indexes by Month for Selected Groups – United States: 2011 and 2012, 1990-1992 Base

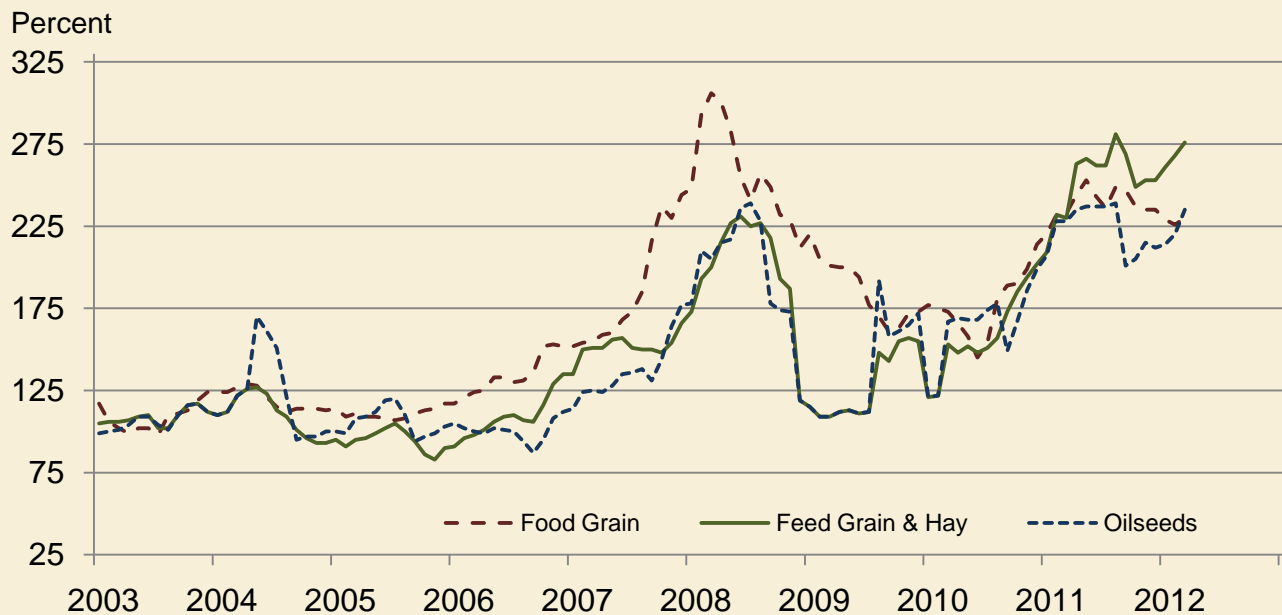
[Revised historical price indexes for months not shown are available at www.nass.usda.gov. Blank data cells indicate estimation period has not yet begun]

Month	Index of prices received						Index of prices paid			
	All farm products		All crops		Livestock and products		All items		Production items	
	2011	2012	2011	2012	2011	2012	2011	2012	2011	2012
	(percent)	(percent)	(percent)	(percent)	(percent)	(percent)	(percent)	(percent)	(percent)	(percent)
January	166	188	189	212	137	156	195	208	204	221
February	171	181	200	205	144	158	197	209	207	222
March	173	186	198	213	152	161	201	210	211	222
April	176		200		156		203		215	
May	175		203		152		203		215	
June	180		209		153		203		215	
July	181		207		155		204		216	
August	183		209		158		204		216	
September	179		203		152		204		217	
October	184		203		154		204		216	
November	184		206		157		205		218	
December	179		198		157		205		217	

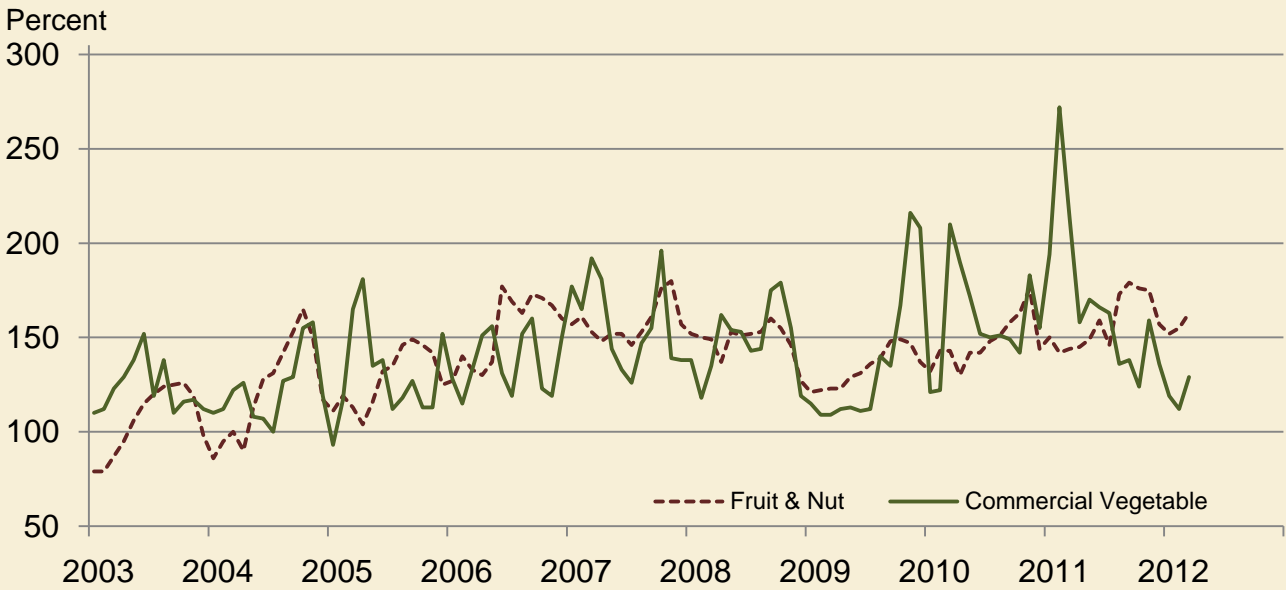
Received Indexes by Month, Livestock Products, All Products, and All Crops – United States: 1990-1992=100



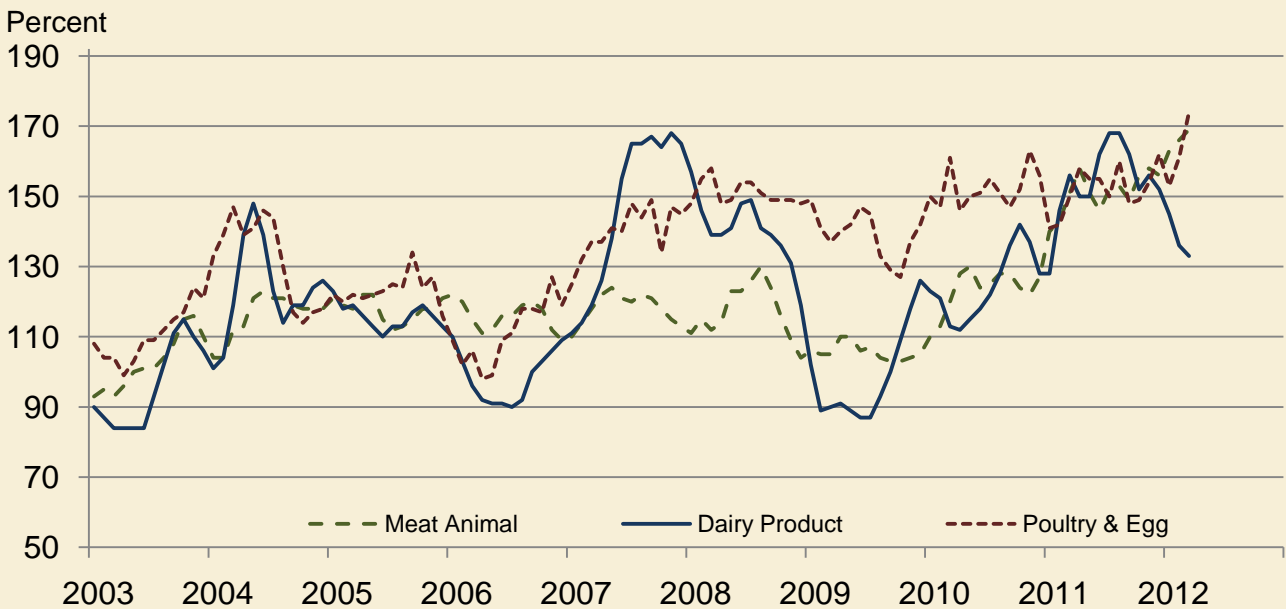
Received Indexes by Month, Food Grains, Feed Grains & Hay, and Oilseeds – United States: 1990-1992=100



Received Indexes by Month, Fruit & Nut and Commercial Vegetables – United States: 1990-1992=100



Received Indexes by Month, Meat Animal, Dairy Product, and Poultry & Egg – United States: 1990-1992=100



Prices Received for Field Crops and Fruits – United States: March 2012 with Comparisons

Commodity	Average 1990-1992=100	March 2011	February 2012	Preliminary March 2012
Field crops				
Austrian winter peas	dollars/cwt (NA)	(S)	(D)	(S)
Barley, all	dollars/bushel 2.12	4.29	5.39	5.37
Feed	dollars/bushel 1.90	4.26	4.75	4.62
Malting	dollars/bushel 2.43	4.29	5.47	5.50
Beans, dry edible	dollars/cwt 19.10	29.90	46.70	49.00
Canola	dollars/cwt (NA)	23.40	24.80	26.00
Chickpeas, all	dollars/cwt (NA)	32.40	41.30	(D)
Large	dollars/cwt (NA)	35.40	44.80	(D)
Small	dollars/cwt (NA)	21.60	(D)	(S)
Corn	dollars/bushel 2.30	5.53	6.28	6.48
Cotton, Upland	dollars/pound 0.606	0.844	0.924	0.936
Cottonseed ¹	dollars/ton 96.00	(NA)	275.00	(NA)
Flaxseed	dollars/bushel 4.27	13.70	13.30	13.70
Hay, all, baled	dollars/ton 76.30	126.00	176.00	181.00
Alfalfa	dollars/ton 77.20	142.00	198.00	201.00
Other	dollars/ton 60.00	99.50	130.00	139.00
Lentils	dollars/cwt (NA)	29.70	23.70	25.40
Oats	dollars/bushel 1.22	3.28	3.46	3.58
Peanuts, in-shell	dollars/pound 0.304	0.234	0.329	0.342
Peas, dry edible	dollars/cwt (NA)	10.90	15.10	15.80
Potatoes	dollars/cwt 5.82	10.74	9.31	9.74
Rice, all	dollars/cwt 7.07	13.00	13.80	14.10
Long	dollars/cwt (NA)	11.60	13.20	13.20
Medium and short	dollars/cwt (NA)	18.50	15.30	16.00
Sorghum grain	dollars/cwt 3.75	10.60	10.80	11.30
Soybeans	dollars/bushel 5.61	12.70	12.20	13.10
Sunflowers, all	dollars/cwt 9.50	28.30	29.60	28.20
Wheat, all	dollars/bushel 2.96	7.55	7.10	7.24
Winter	dollars/bushel 2.93	7.02	6.67	6.65
Durum	dollars/bushel 2.86	8.09	8.95	9.21
Other spring	dollars/bushel 3.11	8.07	8.01	8.14
Hard red winter ²	dollars/bushel (NA)	7.10	6.73	(NA)
Soft red winter ²	dollars/bushel (NA)	6.70	7.13	(NA)
Hard red spring ²	dollars/bushel (NA)	8.12	8.21	(NA)
White ²	dollars/bushel 3.24	6.65	6.43	(NA)
Fruits				
Citrus, equivalent on-tree				
Grapefruit	dollars/box 5.77	5.69	5.96	6.28
Lemons	dollars/box 10.10	5.70	11.54	13.00
Oranges	dollars/box 5.79	6.77	7.64	8.12
Tangelos	dollars/box 5.82	(NA)	14.33	(NA)
Tangerines and mandarins	dollars/box 15.11	13.23	18.50	23.52
Noncitrus, fresh				
Apples ³	dollars/pound 0.212	0.282	0.354	0.364
Grapes ³	dollars/ton 506.00	(S)	(S)	(NA)
Peaches ³	dollars/ton 432.00	(S)	(S)	(S)
Pears ³	dollars/ton 370.00	625.00	472.00	379.00
Strawberries	dollars/cwt 56.00	99.20	113.00	105.00

(D) Withheld to avoid disclosing data for individual operations.

(NA) Not available.

(S) Insufficient number of reports to establish an estimate.

¹ Marketing year August - February.

² Preliminary estimates not set for this item.

³ Equivalent packinghouse-door returns for California, Michigan, New York (apples only), and Washington (apples, peaches, and pears). Prices as sold for other states.

Prices Received for Vegetables and Livestock – United States: March 2012 with Comparisons

[Price data source for livestock and poultry commodities is United States Department of Agriculture's Agricultural Marketing Service]

Commodity	Average 1990-1992=100	March 2011	February 2012	Preliminary March 2012
Vegetables, fresh ¹				
Asparagusdollars/cwt	79.80	132.00	(S)	(S)
Beans, snap ²dollars/cwt	(NA)	48.80	77.20	57.70
Broccolidollars/cwt	22.50	40.80	22.50	33.90
Cantaloupes ²dollars/cwt	(NA)	(S)	(S)	(S)
Carrotsdollars/cwt	13.20	44.60	26.30	26.70
Cauliflowerdollars/cwt	26.80	51.30	31.80	48.60
Celerydollars/cwt	11.60	29.50	12.60	12.00
Corn, sweetdollars/cwt	15.70	42.40	31.00	35.60
Cucumbers ²dollars/cwt	(NA)	(S)	(S)	(S)
Lettucedollars/cwt	11.90	35.20	12.60	11.90
Onions ³dollars/cwt	12.80	8.04	5.97	7.35
Tomatoesdollars/cwt	32.30	98.70	30.60	50.50
Livestock				
Calvesdollars/cwt	94.30	148.00	184.00	185.00
Cattle, all beefdollars/cwt	72.90	115.00	127.00	130.00
Cows ⁴dollars/cwt	49.60	75.20	82.00	84.50
Steers and heifersdollars/cwt	77.10	118.00	131.00	134.00
Milk cows ⁵dollars/head	1130.00	(NA)	(NA)	(NA)
Hogs, alldollars/cwt	47.70	62.90	65.50	65.70
Barrows and giltsdollars/cwt	48.40	63.10	65.80	65.80
Sowsdollars/cwt	39.50	58.00	58.30	60.40
Dairy and poultry				
Milk, all ⁶dollars/cwt	13.06	20.40	17.70	17.40
Fat test percent	3.66	3.74	3.75	3.70
Broilers, live ⁷dollars/pound	0.317	0.490	0.530	0.570
Eggs, all ⁸dollars/dozen	0.643	0.849	0.885	0.995
Market ^{8 9}dollars/dozen	0.546	0.652	0.669	0.791
Turkeys, live ^{8 10 11}dollars/pound	0.380	0.599	0.650	0.685
Adjusted for seasonal variation				
Eggs, alldollars/dozen	0.545	0.759	0.842	0.890
Seasonal factor percent	100	112	105	112
Milk, all ⁶dollars/cwt	9.71	21.80	18.00	18.60
Seasonal factor percent	100	94	99	94

(NA) Not available.

(S) Insufficient number of reports to establish an estimate.

¹ Beginning January 2006, point of first sale. FOB shipping point for prior years.

² Monthly estimates began January 1995.

³ Includes some processing.

⁴ Beef cows and cull dairy cows sold for slaughter.

⁵ Animals sold for dairy herd replacement only. Prices available for January, April, July, and October.

⁶ Before deductions for hauling. Includes quality, quantity, and other premiums. Excludes hauling subsidies.

⁷ Live weight equivalent price.

⁸ Mid-month price.

⁹ Also referred to as table eggs.

¹⁰ Live weight equivalent price is used when actual live weight price is not available.

¹¹ Beginning January 2011, price reflects FOB shipping point basis. Prior year price reflects delivered basis.

Prices Received for Corn by Month – United States

Dollars per bushel



Prices Received for Wheat by Month – United States

Dollars per bushel



Prices Received for Upland Cotton by Month – United States

Dollars per pound



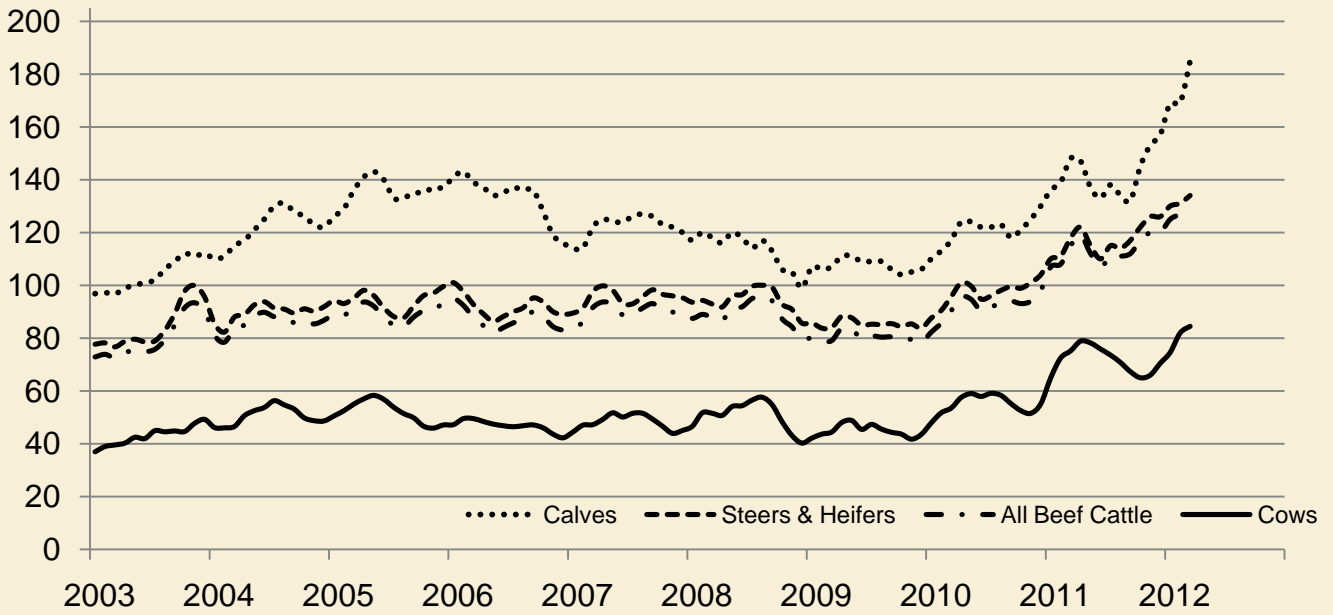
Prices Received for Soybeans by Month – United States

Dollars per bushel



Prices Received for Cattle by Month – United States

Dollars per cwt



Prices Received for Milk by Month – United States

Dollars per cwt



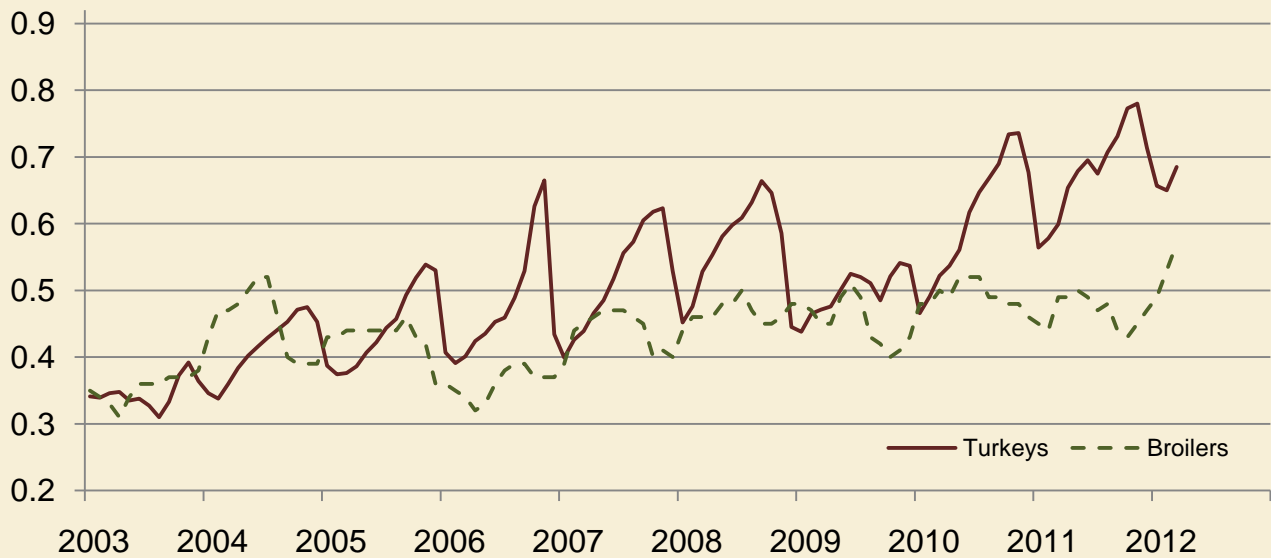
Prices Received for Hogs by Month – United States

Dollars per cwt



Prices Received for Poultry by Month – United States

Dollars per pound



Prices Received for All Wheat, Corn, and Soybeans by Month – United States: 2012 with Comparisons

[Current month prices are mid-month; prices for previous months and years are for the entire month. Blank data cells indicate estimation period has not yet begun]

Month	All wheat			Corn			Soybeans		
	2010	2011	Preliminary 2012	2010	2011	Preliminary 2012	2010	2011	Preliminary 2012
	(dollars per bushel)	(dollars per bushel)	(dollars per bushel)	(dollars per bushel)	(dollars per bushel)	(dollars per bushel)	(dollars per bushel)	(dollars per bushel)	(dollars per bushel)
January	4.90	6.69	7.04	3.66	4.94	6.07	9.79	11.60	11.90
February	4.73	7.42	7.10	3.55	5.65	6.28	9.41	12.70	12.20
March	4.70	7.55	7.24	3.55	5.53	6.48	9.39	12.70	13.10
April	4.41	8.01		3.41	6.36		9.47	13.10	
May	4.34	8.16		3.48	6.32		9.41	13.20	
June	4.16	7.41		3.41	6.38		9.45	13.20	
July	4.49	7.10		3.49	6.33		9.79	13.20	
August	5.44	7.61		3.65	6.88		10.10	13.40	
September ...	5.79	7.55		4.08	6.37		9.98	12.20	
October	5.88	7.29		4.32	5.71		10.20	11.70	
November	6.10	7.26		4.55	5.84		11.10	11.70	
December	6.44	7.19		4.82	5.86		11.60	11.50	

Prices Received for Beef Cattle and All Hogs by Month – United States: 2012 with Comparisons

[Current month prices are mid-month; prices for previous months and years are for the entire month. Blank data cells indicate estimation period has not yet begun]

Month	Beef cattle ¹			All hogs ²		
	2010	2011	Preliminary 2012	2010	2011	Preliminary 2012
	(dollars per cwt)	(dollars per cwt)	(dollars per cwt)	(dollars per cwt)	(dollars per cwt)	(dollars per cwt)
January	82.30	107.00	125.00	48.40	56.00	63.50
February	85.70	108.00	127.00	48.90	61.40	65.50
March	90.40	115.00	130.00	52.10	62.90	65.70
April	95.60	119.00		56.50	67.80	
May	94.70	112.00		62.20	68.60	
June	90.40	107.00		58.20	69.70	
July	91.70	111.00		58.50	71.70	
August	93.50	111.00		61.30	75.80	
September	94.10	112.00		61.00	67.10	
October	93.10	117.00		53.30	68.70	
November	94.00	120.00		47.80	64.40	
December	98.10	120.00		52.40	63.50	

¹ Cows and steers & heifers.

² Barrows & gilts and sows.

Prices Received for All Wheat – States and United States: March 2012 with Comparisons

State	March 2011	February 2012	Preliminary March 2012
	(dollars per bushel)	(dollars per bushel)	(dollars per bushel)
Arizona	(S)	(D)	(S)
Arkansas	(D)	(D)	6.70
California	6.48	(D)	(D)
Colorado	6.91	6.44	6.30
Idaho	6.94	6.99	7.29
Illinois	7.01	6.79	6.70
Indiana	7.58	7.19	6.40
Kansas	7.84	6.82	6.65
Michigan	6.81	6.78	6.70
Minnesota	6.83	8.09	8.18
Missouri	6.36	6.50	6.50
Montana	7.22	7.37	7.67
Nebraska	6.38	6.43	6.30
North Carolina	7.83	8.00	7.00
North Dakota	8.35	7.94	8.15
Ohio	6.51	6.88	6.87
Oklahoma	7.25	6.88	6.71
Oregon	7.21	6.47	6.85
South Dakota	8.70	7.25	7.18
Texas	7.99	7.58	6.67
Washington	7.31	6.65	6.85
United States	7.55	7.10	7.24

(D) Withheld to avoid disclosing data for individual operations.

(S) Insufficient number of reports to establish an estimate.

Prices Received for Winter Wheat – States and United States: March 2012 with Comparisons

State	March 2011	February 2012	Preliminary March 2012
	(dollars per bushel)	(dollars per bushel)	(dollars per bushel)
Arkansas	(D)	(D)	6.70
California	6.48	(D)	(D)
Colorado	6.91	6.44	6.30
Idaho	6.56	6.60	6.90
Illinois	7.01	6.79	6.70
Indiana	7.58	7.19	6.40
Kansas	7.84	6.82	6.65
Michigan	6.81	6.78	6.70
Minnesota	6.36	(D)	6.40
Missouri	6.36	6.50	6.50
Montana	6.69	6.48	6.80
Nebraska	6.38	6.43	6.30
North Carolina	7.83	8.00	7.00
North Dakota	6.35	5.92	6.10
Ohio	6.51	6.88	6.87
Oklahoma	7.25	6.88	6.71
Oregon	7.07	6.42	6.80
South Dakota	7.23	6.69	6.70
Texas	7.99	7.58	6.67
Washington	6.64	6.42	6.60
United States	7.02	6.67	6.65

(D) Withheld to avoid disclosing data for individual operations.

Prices Received for Durum Wheat – States and United States: March 2012 with Comparisons

State	March 2011	February 2012	Preliminary March 2012
	(dollars per bushel)	(dollars per bushel)	(dollars per bushel)
Arizona	(S)	(D)	(S)
California	(D)	(S)	(S)
Idaho	(D)	(D)	(D)
Montana	7.67	10.20	10.20
North Dakota	8.14	8.31	8.80
United States	8.09	8.95	9.21

(D) Withheld to avoid disclosing data for individual operations.

(S) Insufficient number of reports to establish an estimate.

Prices Received for Spring Wheat – States and United States: March 2012 with Comparisons

State	March 2011	February 2012	Preliminary March 2012
	(dollars per bushel)	(dollars per bushel)	(dollars per bushel)
Colorado	(D)	(D)	(S)
Idaho	7.51	7.64	7.70
Minnesota	6.84	8.10	8.20
Montana	7.71	8.17	8.46
North Dakota	8.48	8.12	8.15
Oregon	8.22	6.82	7.10
South Dakota	9.26	8.21	8.00
Washington	9.23	7.68	7.79
United States	8.07	8.01	8.14

(D) Withheld to avoid disclosing data for individual operations.

(S) Insufficient number of reports to establish an estimate.

Prices Received for All Barley – States and United States: March 2012 with Comparisons

State	March 2011	February 2012	Preliminary March 2012
	(dollars per bushel)	(dollars per bushel)	(dollars per bushel)
California	(D)	(S)	(S)
Colorado	2.93	5.27	(D)
Idaho	4.16	5.82	5.81
Minnesota	(D)	(D)	(D)
Montana	4.28	5.00	4.81
North Dakota	4.35	5.56	5.81
Oregon	4.29	4.29	4.50
Utah	5.00	5.19	(D)
Washington	4.51	4.23	4.53
Wyoming	(D)	(D)	(D)
United States	4.29	5.39	5.37

(D) Withheld to avoid disclosing data for individual operations.

(S) Insufficient number of reports to establish an estimate.

Prices Received for Malting Barley – States: March 2012 with Comparisons

State	March 2011	February 2012	Preliminary March 2012
	(dollars per bushel)	(dollars per bushel)	(dollars per bushel)
Idaho	4.08	5.90	(D)
Minnesota	(D)	(D)	(D)
Montana	4.29	5.02	(D)
North Dakota	4.37	5.63	5.90
Wyoming	(D)	(D)	(D)

(D) Withheld to avoid disclosing data for individual operations.

Prices Received for Feed Barley – States: March 2012 with Comparisons

State	March 2011	February 2012	Preliminary March 2012
	(dollars per bushel)	(dollars per bushel)	(dollars per bushel)
Idaho	4.64	4.89	4.85
Minnesota	4.20	4.93	4.90
Montana	4.20	4.69	(D)
North Dakota	4.19	4.85	5.00
Wyoming	(S)	(S)	(S)

(D) Withheld to avoid disclosing data for individual operations.

(S) Insufficient number of reports to establish an estimate.

Prices Received for Corn – States and United States: March 2012 with Comparisons

State	March 2011	February 2012	Preliminary March 2012
	(dollars per bushel)	(dollars per bushel)	(dollars per bushel)
Colorado	5.21	6.30	6.47
Illinois	5.73	6.37	6.60
Indiana	5.80	6.45	6.73
Iowa	5.32	6.21	6.40
Kansas	6.08	6.35	6.55
Kentucky	5.76	6.51	6.70
Michigan	5.84	6.14	6.35
Minnesota	5.25	6.05	6.30
Missouri	5.60	6.46	6.70
Nebraska	5.30	6.22	6.40
North Carolina	6.65	7.07	7.15
North Dakota	5.51	5.92	6.20
Ohio	5.95	6.43	6.65
Pennsylvania	6.88	7.07	7.10
South Dakota	5.44	6.06	6.29
Tennessee	6.08	6.75	7.00
Texas	5.45	7.03	7.24
Wisconsin	5.60	6.08	6.23
United States	5.53	6.28	6.48

Prices Received for Soybeans – States and United States: March 2012 with Comparisons

State	March 2011	February 2012	Preliminary March 2012
	(dollars per bushel)	(dollars per bushel)	(dollars per bushel)
Arkansas	12.50	12.40	13.40
Illinois	13.10	12.40	13.40
Indiana	12.80	12.50	13.30
Iowa	12.40	12.10	13.10
Kansas	12.90	12.00	12.80
Kentucky	13.00	12.50	13.40
Louisiana	13.30	12.60	(D)
Michigan	12.20	12.10	13.10
Minnesota	12.50	12.00	13.00
Mississippi	13.20	12.30	13.30
Missouri	12.60	12.40	13.20
Nebraska	12.60	11.90	12.70
North Carolina	13.20	12.40	13.20
North Dakota	12.50	11.70	12.70
Ohio	12.90	12.60	13.50
South Dakota	12.50	12.00	12.90
Tennessee	12.80	12.40	13.10
Wisconsin	12.00	12.20	12.90
United States	12.70	12.20	13.10

(D) Withheld to avoid disclosing data for individual operations.

Prices Received for Oats – States and United States: March 2012 with Comparisons

State	March 2011	February 2012	Preliminary March 2012
	(dollars per bushel)	(dollars per bushel)	(dollars per bushel)
Illinois	(S)	(D)	(S)
Iowa	3.17	3.61	3.70
Michigan	3.34	(D)	(D)
Minnesota	3.09	3.40	3.40
Montana	2.52	(D)	(S)
Nebraska	3.72	3.99	4.05
New York	3.63	(D)	(D)
North Dakota	3.19	3.15	(D)
Oregon	(S)	(S)	(S)
Pennsylvania	3.98	4.01	4.03
South Dakota	3.36	3.65	3.72
Texas	(S)	(S)	(S)
Wisconsin	3.19	3.60	3.40
United States	3.28	3.46	3.58

(D) Withheld to avoid disclosing data for individual operations.

(S) Insufficient number of reports to establish an estimate.

Prices Received for Sorghum Grain – States and United States: March 2012 with Comparisons

State	March 2011	February 2012	Preliminary March 2012
	(dollars per cwt)	(dollars per cwt)	(dollars per cwt)
Arkansas	(S)	(D)	(D)
Illinois	10.50	(D)	(S)
Kansas	10.80	10.80	11.20
Louisiana	(S)	(D)	(S)
Missouri	(D)	10.70	11.20
Nebraska	10.30	10.60	10.70
Oklahoma	10.90	10.90	11.40
Texas	9.75	11.20	12.10
United States	10.60	10.80	11.30

(D) Withheld to avoid disclosing data for individual operations.

(S) Insufficient number of reports to establish an estimate.

Prices Received for Dry Beans – States and United States: March 2012 with Comparisons

State	March 2011	February 2012	Preliminary March 2012
	(dollars per cwt)	(dollars per cwt)	(dollars per cwt)
California	46.90	50.30	(D)
Colorado	29.40	50.30	52.00
Idaho	27.50	45.10	48.00
Michigan	36.70	53.40	(D)
Minnesota	34.70	46.40	46.40
Nebraska	31.90	46.90	47.30
North Dakota	26.10	45.50	45.00
United States	29.90	46.70	49.00

(D) Withheld to avoid disclosing data for individual operations.

Prices Received for Peanuts (In-Shell) – States and United States: March 2012 with Comparisons

State	March 2011	February 2012	Preliminary March 2012
	(dollars per pound)	(dollars per pound)	(dollars per pound)
Alabama	0.218	0.309	0.359
Florida	0.218	0.326	0.359
Georgia	0.223	0.326	0.343
Mississippi	0.221	0.384	0.461
New Mexico	(D)	(S)	(S)
North Carolina	0.256	0.331	0.309
Oklahoma	0.242	(D)	0.327
South Carolina	0.254	0.306	0.336
Texas	0.272	0.421	0.382
Virginia	0.255	0.336	0.321
United States	0.234	0.329	0.342

(D) Withheld to avoid disclosing data for individual operations.

(S) Insufficient number of reports to establish an estimate.

Prices Received for Sunflower – States and United States: March 2012 with Comparisons

State	March 2011	February 2012	Preliminary March 2012
	(dollars per cwt)	(dollars per cwt)	(dollars per cwt)
Colorado	(D)	28.10	(D)
Kansas	(D)	31.00	29.70
Minnesota	28.20	34.80	(D)
North Dakota	28.60	32.30	28.60
South Dakota	26.90	26.60	26.10
United States	28.30	29.60	28.20

(D) Withheld to avoid disclosing data for individual operations.

Prices Received for Canola – States and United States: March 2012 with Comparisons

State	March 2011	February 2012	Preliminary March 2012
	(dollars per cwt)	(dollars per cwt)	(dollars per cwt)
Minnesota	25.20	25.90	(S)
North Dakota	23.30	24.80	26.00
United States	23.40	24.80	26.00

(S) Insufficient number of reports to establish an estimate.

Prices Received for Flaxseed – States and United States: March 2012 with Comparisons

State	March 2011	February 2012	Preliminary March 2012
	(dollars per bushel)	(dollars per bushel)	(dollars per bushel)
North Dakota	13.70	13.30	13.70
United States	13.70	13.30	13.70

Prices Received for Upland Cotton and Cottonseed – States and United States: March 2012 with Comparisons

[Cottonseed marketing year August - February]

State	Cotton, Upland			Cottonseed		
	March 2011	February 2012	Preliminary March 2012	March 2011	February 2012	Preliminary March 2012
	(dollars per pound)	(dollars per pound)	(dollars per pound)	(dollars per ton)	(dollars per ton)	(dollars per ton)
Alabama	(D)	0.944	0.995	(NA)	208.00	(NA)
Arizona	(D)	0.894	(D)	(NA)	299.00	(NA)
Arkansas	(D)	0.985	0.930	(NA)	(S)	(NA)
California	1.850	(D)	(D)	(NA)	(D)	(NA)
Georgia	0.835	0.927	0.986	(NA)	208.00	(NA)
Louisiana	(D)	0.992	(D)	(NA)	(S)	(NA)
Mississippi	(D)	0.985	0.981	(NA)	(S)	(NA)
North Carolina	0.809	0.906	0.996	(NA)	(S)	(NA)
Tennessee	0.851	0.964	(D)	(NA)	(S)	(NA)
Texas	0.849	0.833	0.824	(NA)	311.00	(NA)
United States	0.844	0.924	0.936	(NA)	275.00	(NA)

(D) Withheld to avoid disclosing data for individual operations.

(NA) Not available.

(S) Insufficient number of reports to establish an estimate.

Prices Received and Farm Marketings for Upland Cotton and Rice – United States: March 2012 with Comparisons

Item	March 2011	February 2012	Preliminary March 2012
Cotton, Upland			
Average price dollars/pound	0.844	0.924	0.936
Marketings ¹ 1,000 bales	416	858	(NA)
Rice, all			
Average price dollars/cwt	13.00	13.80	14.10
Marketings ² 1,000 cwt	15,844	13,187	(NA)
Rice, long			
Average price dollars/cwt	11.60	13.20	13.20
Marketings ² 1,000 cwt	12,537	9,917	(NA)
Rice, medium and short			
Average price dollars/cwt	18.50	15.30	16.00
Marketings ² 1,000 cwt	3,307	3,270	(NA)

(NA) Not available.

¹ Marketings based on a survey of cotton buyers in the major producing States - Alabama, Arizona, Arkansas, California, Georgia, Louisiana, Mississippi, North Carolina, Tennessee, and Texas.

² Purchases by private firms and rice (rough equivalent) shipped by cooperatives.

Prices Received for Hay by Type – States and United States: March 2012 with Comparisons

State	All hay			Alfalfa hay			Other hay		
	March 2011	February 2012	Preliminary March 2012	March 2011	February 2012	Preliminary March 2012	March 2011	February 2012	Preliminary March 2012
	(dollars per ton)	(dollars per ton)	(dollars per ton)	(dollars per ton)	(dollars per ton)	(dollars per ton)	(dollars per ton)	(dollars per ton)	(dollars per ton)
Arizona	176.00	252.00	255.00	180.00	255.00	260.00	125.00	185.00	195.00
California	212.00	244.00	242.00	240.00	250.00	245.00	116.00	215.00	226.00
Colorado	136.00	235.00	247.00	140.00	245.00	255.00	115.00	165.00	170.00
Idaho	155.00	206.00	207.00	157.00	210.00	210.00	120.00	145.00	145.00
Illinois	138.00	140.00	172.00	145.00	150.00	180.00	90.00	110.00	140.00
Iowa	110.00	139.00	140.00	118.00	152.00	149.00	79.00	95.00	94.00
Kansas	98.00	195.00	184.00	115.00	225.00	220.00	75.00	105.00	100.00
Kentucky	94.00	113.00	114.00	140.00	190.00	185.00	75.00	90.00	85.00
Michigan	97.00	106.00	100.00	105.00	115.00	110.00	80.00	85.00	80.00
Minnesota	106.00	117.00	126.00	110.00	135.00	145.00	80.00	90.00	90.00
Missouri	76.00	93.00	124.00	135.00	250.00	250.00	60.00	75.00	100.00
Montana	76.00	105.00	104.00	77.00	107.00	105.00	74.00	93.00	97.00
Nebraska	76.00	128.00	129.00	80.00	139.00	140.00	65.00	95.00	99.00
Nevada	150.00	230.00	223.00	151.00	233.00	226.00	129.00	165.00	175.00
New Mexico	174.00	294.00	294.00	180.00	301.00	301.00	147.00	224.00	224.00
New York	112.00	102.00	108.00	140.00	134.00	160.00	110.00	100.00	105.00
North Dakota	63.00	73.00	68.00	66.00	79.00	78.00	47.00	57.00	56.00
Ohio	116.00	148.00	143.00	162.00	209.00	192.00	78.00	94.00	111.00
Oklahoma	84.00	190.00	193.00	136.00	241.00	249.00	77.00	135.00	143.00
Oregon	169.00	220.00	230.00	168.00	237.00	246.00	170.00	196.00	208.00
Pennsylvania	126.00	191.00	191.00	159.00	224.00	228.00	118.00	170.00	174.00
South Dakota	80.00	123.00	122.00	83.00	132.00	129.00	70.00	89.00	85.00
Texas	123.00	175.00	181.00	190.00	277.00	276.00	112.00	155.00	162.00
Utah	120.00	191.00	171.00	120.00	193.00	175.00	106.00	155.00	142.00
Washington	149.00	238.00	236.00	140.00	250.00	245.00	170.00	210.00	215.00
Wisconsin	101.00	113.00	113.00	105.00	125.00	125.00	75.00	90.00	90.00
Wyoming	97.00	144.00	151.00	98.00	150.00	155.00	90.00	125.00	130.00
United States	126.00	176.00	181.00	142.00	198.00	201.00	99.50	130.00	139.00

Prices Received for Apples – States and United States: March 2012 with Comparisons

[Equivalent packinghouse-door returns for California, Michigan, New York, and Washington. Prices at point of first sale for other States]

State	Apples, fresh use		
	March 2011	February 2012	Preliminary March 2012
	(dollars per pound)	(dollars per pound)	(dollars per pound)
California	(NA)	(NA)	(NA)
Michigan	0.300	0.325	0.325
New York	0.257	0.301	0.302
Ohio	0.530	0.430	0.490
Pennsylvania	(NA)	(NA)	0.471
Virginia	0.260	0.390	0.390
Washington	0.284	0.356	0.341
United States	0.282	0.354	0.364

(NA) Not available.

Prices Received for Citrus Fruits by Utilization – States and United States: March 2011

[Net pounds per box: grapefruit in California-80, Florida-85, Texas-80; lemons-80; oranges in California-80, Florida-90, Texas-85; tangelos-90; tangerines and mandarins in Arizona and California-80, Florida-95]

Commodity, State, and type	FOB packed fresh	Equivalent returns					
		Packinghouse-door			On-tree		
		All	Fresh	Process	All	Fresh	Process
	(dollars per box)	(dollars per box)	(dollars per box)	(dollars per box)	(dollars per box)	(dollars per box)	(dollars per box)
Grapefruit							
California ¹	17.00	10.60	10.60	(D)	8.50	8.50	(D)
Florida	21.70	8.17	11.87	6.38	5.61	9.68	3.64
White	23.50	7.48	13.60	5.75	5.02	11.45	3.20
Colored	21.20	8.50	11.40	6.75	5.90	9.20	3.90
Texas	24.00	7.38	13.70	1.60	5.91	12.15	0.20
United States	21.40	8.23	11.78	6.38	5.69	9.60	3.64
Lemons							
Arizona	(D)	(D)	(D)	(D)	(D)	(D)	(D)
California	29.70	11.94	18.80	(D)	6.07	12.93	(D)
United States	29.60	11.57	18.74	(D)	5.70	12.87	(D)
Oranges							
California	19.90	8.79	11.28	(D)	6.34	8.87	(D)
Navel and miscellaneous ..	19.40	8.21	10.76	(D)	5.76	8.35	(D)
Valencia	(D)	(D)	(D)	(D)	(D)	(D)	(D)
Florida	23.20	9.68	13.19	9.52	7.09	10.48	6.94
Early and mids	21.00	9.78	11.00	9.70	7.27	8.25	7.20
Valencia	23.70	9.67	13.70	9.50	7.06	11.00	6.90
United States	20.10	9.30	11.41	8.13	6.77	8.98	5.55
Tangerines and mandarins							
Arizona	(S)	(S)	(S)	(S)	(S)	(S)	(S)
California	(D)	(D)	(D)	(D)	(D)	(D)	(D)
Florida	28.20	13.53	15.95	8.80	10.03	12.45	5.30
United States	27.60	16.18	18.72	3.76	13.23	15.95	-0.05

(D) Withheld to avoid disclosing data for individual operations.

(S) Insufficient number of reports to establish an estimate.

¹ Some processed sales included in fresh sales.

Prices Received for Citrus Fruits by Utilization – States and United States: February 2012

[Net pounds per box: grapefruit in California-80, Florida-85, Texas-80; lemons-80; oranges in California-80, Florida-90, Texas-85; tangelos-90; tangerines and mandarins in Arizona and California-80, Florida-95]

Commodity, State, and type	FOB packed fresh	Equivalent returns					
		Packinghouse-door			On-tree		
		All	Fresh	Process	All	Fresh	Process
	(dollars per box)	(dollars per box)	(dollars per box)	(dollars per box)	(dollars per box)	(dollars per box)	(dollars per box)
Grapefruit							
California ¹	17.20	10.67	10.67	(D)	8.53	8.53	(D)
Florida	18.60	8.40	8.94	8.10	5.86	6.70	5.39
White	18.40	7.71	8.70	7.45	5.20	6.50	4.85
Colored	18.60	8.74	9.00	8.55	6.18	6.75	5.75
Texas	23.80	7.66	13.50	1.60	6.19	11.95	0.20
United States	19.60	8.33	9.96	7.27	5.96	7.87	4.72
Lemons							
Arizona	(D)	(D)	(D)	(D)	(D)	(D)	(D)
California	35.60	17.60	24.48	(D)	11.61	18.49	(D)
United States	35.50	17.53	24.40	(D)	11.54	18.41	(D)
Oranges							
California							
Navel and miscellaneous ..	21.60	10.27	12.79	(D)	7.77	10.33	(D)
Florida							
Early and mids	24.10	10.19	13.85	10.10	7.58	11.05	7.50
United States	21.80	10.21	12.85	9.25	7.64	10.37	6.65
Tangelos							
Florida	35.30	17.45	24.20	10.70	14.33	21.05	7.60
Tangerines and mandarins							
Arizona	(D)	(D)	(D)	(D)	(D)	(D)	(D)
California	(D)	(D)	(D)	(D)	(D)	(D)	(D)
Florida	28.30	13.62	16.00	10.40	9.75	12.30	6.30
United States	33.50	21.59	24.40	8.00	18.50	21.52	3.89

(D) Withheld to avoid disclosing data for individual operations.

¹ Some processed sales included in fresh sales.

Prices Received for Citrus Fruits by Utilization – States and United States: March 2012

[Net pounds per box: grapefruit in California-80, Florida-85, Texas-80; lemons-80; oranges in California-80, Florida-90, Texas-85; tangelos-90; tangerines and mandarins in Arizona and California-80, Florida-95]

Commodity, State, and type	FOB packed fresh	Equivalent returns					
		Packinghouse-door			On-tree		
		All	Fresh	Process	All	Fresh	Process
	(dollars per box)	(dollars per box)	(dollars per box)	(dollars per box)	(dollars per box)	(dollars per box)	(dollars per box)
Grapefruit							
California ¹	20.30	13.77	13.77	(D)	11.63	11.63	(D)
Florida	20.00	8.66	10.36	8.03	6.06	8.12	5.30
White	19.80	7.91	10.10	7.65	5.36	7.90	5.05
Colored	20.00	8.98	10.40	8.25	6.37	8.15	5.45
Texas	24.20	8.25	13.90	1.60	6.77	12.35	0.20
United States	21.10	8.70	11.47	7.35	6.28	9.41	4.77
Lemons							
California	35.00	18.99	23.88	(D)	13.00	17.89	(D)
United States	35.00	18.99	23.88	(D)	13.00	17.89	(D)
Oranges							
California	21.30	10.62	12.52	(D)	8.13	10.06	(D)
Navel and miscellaneous ..	21.40	10.85	12.59	(D)	8.36	10.13	(D)
Valencia	(D)	(D)	(D)	(D)	(D)	(D)	(D)
Florida	26.00	10.82	15.75	10.70	8.12	12.90	8.00
Early and mids	(S)	(S)	(S)	(S)	(S)	(S)	(S)
Valencia	26.00	10.82	15.75	10.70	8.12	12.90	8.00
United States	21.70	10.77	12.78	10.18	8.12	10.28	7.48
Tangerines and mandarins							
California	(D)	(D)	(D)	(D)	(D)	(D)	(D)
Florida	33.20	16.68	20.90	9.65	12.83	17.20	5.55
United States	38.30	26.51	29.36	6.90	23.52	26.54	2.77

(D) Withheld to avoid disclosing data for individual operations.

(S) Insufficient number of reports to establish an estimate.

¹ Some processed sales included in fresh sales.

Prices Received for Potatoes – States and United States: March 2012 with Comparisons

State	March 2011	February 2012	Preliminary March 2012
	(dollars per cwt)	(dollars per cwt)	(dollars per cwt)
California			
Spring	(S)	(S)	(S)
Fall	10.60	8.50	8.60
All ¹	10.60	8.50	8.60
Colorado			
Fresh ¹	14.50	12.30	(D)
All ¹	13.00	10.80	12.90
Florida	36.90	(D)	(D)
Idaho			
Fresh ²	10.20	7.70	(D)
Processing	7.70	8.30	(D)
All ¹	9.35	8.15	8.80
Maine	11.40	11.00	11.30
Michigan	12.40	12.70	13.20
Minnesota	7.00	6.95	(D)
New York	14.80	15.00	15.20
North Carolina	(S)	(S)	(S)
North Dakota			
Fresh ²	13.00	13.40	(D)
Processing	8.50	7.80	(D)
All ¹	9.90	9.85	(D)
Oregon	10.50	9.10	10.10
Texas	(S)	(S)	(S)
Virginia	(S)	(S)	(S)
Washington			
Processing	7.55	7.85	(D)
All ¹	9.45	8.60	8.75
Wisconsin			
Fresh ²	12.80	11.50	(D)
Processing	12.30	9.00	(D)
All ¹	12.50	10.10	10.00
United States			
Fresh ²	14.50	11.05	(D)
Processing	8.26	8.27	(D)
All ¹	10.74	9.31	9.74

(D) Withheld to avoid disclosing data for individual operations.

(S) Insufficient number of reports to establish an estimate.

¹ Average price of potatoes sold for all uses, including table stock, processing, seed, and livestock feed.

² Fresh market prices only. Includes table stock prices.

Prices Received for All Milk – States and United States: March 2012 with Comparisons

[Before deduction for hauling. Includes quality, quantity, and other premiums. Excludes hauling subsidies]

State	March 2011		February 2012		Preliminary March 2012	
	Price (dollars per cwt)	Fat test (percent)	Price (dollars per cwt)	Fat test (percent)	Price (dollars per cwt)	Fat test (percent)
Arizona	19.90	3.54	17.10	3.53	16.50	3.50
California	18.62	3.72	15.90	3.75	16.00	3.69
Colorado	20.30	3.60	18.10	3.59	17.50	3.56
Florida	23.30	3.66	21.70	3.64	21.00	3.59
Idaho	18.70	3.73	16.90	3.68	16.70	3.62
Illinois	21.00	3.78	18.10	3.78	17.40	3.74
Indiana	21.10	3.72	18.30	3.71	17.60	3.65
Iowa	20.70	3.73	18.30	3.80	17.60	3.75
Kansas	21.70	3.83	18.30	3.85	17.80	3.80
Michigan	21.10	3.70	18.50	3.71	17.90	3.68
Minnesota	20.90	3.77	18.60	3.86	18.40	3.83
Missouri	20.30	3.74	18.40	3.75	17.80	3.70
New Mexico	20.30	3.63	16.30	3.58	16.20	3.50
New York	21.30	3.79	19.00	3.79	18.10	3.76
Ohio	22.10	3.82	19.10	3.78	18.30	3.73
Oregon	22.20	3.83	18.70	3.84	18.20	3.82
Pennsylvania	22.00	3.80	19.60	3.78	18.70	3.75
Texas	21.60	3.82	17.80	3.81	17.50	3.71
Utah	20.10	3.75	16.80	3.75	16.20	3.70
Vermont	21.60	3.83	19.20	3.85	18.50	3.83
Virginia	22.60	3.76	20.10	3.80	19.30	3.69
Washington	21.10	3.83	18.00	3.84	17.50	3.82
Wisconsin	21.00	3.74	18.30	3.76	17.90	3.74
United States	20.40	3.74	17.70	3.75	17.40	3.70

Prices Received for Milk Cows – States and United States: January 2012 with Comparisons

[Animals sold for dairy herd replacement only. Prices estimated in January, April, July, and October]

State	January 2011 (dollars per head)	October 2011 (dollars per head)	January 2012 (dollars per head)
Arizona	1,380	1,550	1,500
California	1,200	1,400	1,400
Colorado	1,330	1,550	1,500
Florida	1,360	1,620	1,490
Idaho	1,200	1,450	1,450
Illinois	1,330	1,460	1,500
Indiana	1,350	1,550	1,450
Iowa	1,250	1,450	1,400
Kansas	1,200	1,400	1,400
Michigan	1,450	1,600	1,600
Minnesota	1,310	1,440	1,430
Missouri	1,130	1,270	1,200
New Mexico	1,320	1,480	1,380
New York	1,300	1,450	1,450
Ohio	1,360	1,510	1,500
Oregon	1,290	1,430	1,440
Pennsylvania	1,400	1,550	1,500
Texas	1,200	1,400	1,400
Utah	1,140	1,380	1,340
Vermont	1,450	1,650	1,550
Virginia	1,360	1,490	1,520
Washington	1,300	1,450	1,400
Wisconsin	1,430	1,560	1,550
United States	1,300	1,480	1,460

Commodity Parity Prices and Price as Percent of Parity Price – United States: March 2012 with Comparisons

[Parity prices are computed under the provisions of Title III, Subtitle a, Section 301 (a) of the Agricultural Adjustment Act of 1938 as amended by the Agricultural Acts of 1948, 1949, and 1956. See January *Agricultural Prices* for details on adjusted base price and parity price computations. Parity data not available for blank cells. Primary source of data for livestock and milk prices is United States Department of Agriculture's Agricultural Marketing Service]

Commodity and unit	Adjusted base price	Parity price			Price as percent of parity		
		March 2011	February 2012	March 2012	March 2011	February 2012	March 2012
	(dollars)	(dollars)	(dollars)	(dollars)	(percent)	(percent)	(percent)
Basic commodities							
All wheatbushel	0.634	16.10	17.70	17.70	47	40	41
Ricecwt	1.46	43.20	40.70	40.80	30	34	35
Cornbushel	0.414	10.20	11.50	11.60	54	55	56
Cotton							
Upland pound	0.072	1.88	2.01	2.01	45	46	47
American Pima pound	0.141	3.42	3.93	3.94	52	42	42
Peanuts pound	0.026	0.715	0.725	0.726	33	45	47
Designated nonbasic							
All milk, to plants ¹cwt	1.80	48.20	50.20	50.30	45	36	37
Honey, extracted ² pound	0.139	3.55	3.88	3.88	45	41	41
Wool and mohair							
Wool pound	0.104	2.44	2.90	2.90	47	58	58
Mohair pound	0.333	8.58	9.29	9.30	41	44	44
Other nonbasic							
Apples, fresh ³ pound	0.033	0.874	0.920	0.922	32	38	39
Barleybushel	0.436	11.30	12.20	12.20	38	44	44
Canolacwt	1.820	46.10	50.80	50.80	51	49	51
Cottonseed ton	17.40	408.00	485.00	486.00	42	57	57
Dry edible beanscwt	3.01	77.30	83.90	84.10	39	56	58
Flaxseedbushel	1.100	27.00	30.70	30.70	51	43	45
Oatsbushel	0.263	6.62	7.34	7.35	50	47	49
Potatoescwt	0.855	22.10	23.80	23.90	49	39	41
Sorghum graincwt	0.729	17.90	20.30	20.40	59	53	55
Soybeansbushel	1.000	25.10	27.90	27.90	51	44	47
Sunflower, allcwt	2.06	50.60	57.50	57.50	56	51	49
Citrus (equivalent on-tree)							
Grapefruitbox	0.690	17.60	19.20	19.30	32	31	33
Lemonsbox	1.37	36.00	38.20	38.30	16	30	34
Orangesbox	0.698	18.20	19.50	19.50	37	39	42
Tangerinesbox	1.49	37.90	41.60	41.60	35	44	57
Livestock and poultry							
Beef cattlecwt	10.10	267.00	282.00	282.00	43	45	46
Calvescwt	13.90	373.00	388.00	388.00	40	47	48
Hogscwt	5.53	146.00	154.00	154.00	43	43	43
Eggs ¹dozen	0.091	2.41	2.54	2.54	31	33	35
Turkeys, live pound	0.057	1.480	1.590	1.590	40	41	43

¹ Seasonally adjusted price as percentage of parity price.

² Wholesale extracted. Adjusted base price derived from state annual averages prices weighted by production. For 1982 through 1985 the national averages are the support prices.

³ Equivalent packinghouse-door returns for California, New York (apples only), Oregon (except peaches), and Washington. Price at point of first sale for other states.

Commodity Parity Prices – United States: March 2012 with Comparisons

[Parity prices are computed under the provisions of Title III, Subtitle a, Section 301 (a) of the Agricultural Adjustment Act of 1938 as amended by the Agricultural Acts of 1948, 1949, and 1956. See January *Agricultural Prices* for details on adjusted base price and parity price computations]

Commodity and unit	Adjusted base price	Parity price			
		March 2011	February 2012	March 2012	
	(dollars)	(dollars)	(dollars)	(dollars)	
Field crops and miscellaneous					
Hops	pound	0.306	8.13	8.53	8.55
Mustard seed	cwt	2.82	70.40	78.60	78.80
Rapeseed	cwt	2.23	56.70	62.20	62.30
Rye	bushel	0.525	13.00	14.60	14.70
Safflower	cwt	2.02	51.40	56.30	56.40
Spearmint oil	pound	1.50	38.10	41.80	41.90
Sweet potatoes	cwt	2.20	60.10	61.40	61.40
Tobacco					
Flue-cured, 11-14	pound	0.196	5.51	5.47	5.47
Fire-cured, 21-23	pound	0.283	7.76	7.89	7.90
Burley, 31	pound	0.202	5.67	5.63	5.64
Maryland, 32	pound	0.174	4.85	4.85	4.86
Dark air-cured, 35-37	pound	0.256	6.91	7.14	7.15
Pennsylvania seedleaf, 41	pound	0.182	5.06	5.08	5.08
Cigar binder, 51	pound	0.640	17.90	17.80	17.90
Noncitrus fruit					
Apples, processing ^{1 9}	ton	16.10	426.00	449.00	450.00
Apricots					
Fresh ^{2 9}	ton	114.00	3,020.00	3,180.00	3,180.00
Dried (California) ⁹	ton	262.00	6,940.00	7,310.00	7,320.00
Avocados ^{2 9}	ton	198.00	5,240.00	5,520.00	5,530.00
Cherries					
Sweet ⁹	ton	210.00	5,560.00	5,860.00	5,870.00
Tart ⁹	pound	0.034	0.900	0.948	0.950
Cranberry ^{3 9}	barrel	4.89	129.00	136.00	137.00
Dates (California) ^{2 9}	ton	183.00	4,850.00	5,100.00	5,110.00
Grapes					
Raisin variety ⁹	ton	117.00	3,100.00	3,260.00	3,270.00
Other dried ⁹	ton	65.40	1,730.00	1,820.00	1,830.00
Kiwifruit ⁹	ton	94.40	2,500.00	2,630.00	2,640.00
Nectarines, fresh (California) ^{2 9}	ton	55.30	1,460.00	1,540.00	1,540.00
Olives, canning (California) ^{3 9}	ton	87.40	2,310.00	2,440.00	2,440.00

See footnote(s) at end of table.

--continued

Commodity Parity Prices – United States: March 2012 with Comparisons (continued)

[Parity prices are computed under the provisions of Title III, Subtitle a, Section 301 (a) of the Agricultural Adjustment Act of 1938 as amended by the Agricultural Acts of 1948, 1949, and 1956. See January *Agricultural Prices* for details on adjusted base price and parity price computations]

Commodity and unit	Adjusted base price	Parity price			
		March 2011	February 2012	March 2012	
	(dollars)	(dollars)	(dollars)	(dollars)	
Noncitrus fruit - continued					
Papayas (Hawaii) ⁹	pound	0.046	1.22	1.28	1.28
Peaches					
Fresh ^{4 9}	ton	83.00	2,200.00	2,310.00	2,320.00
Dried (California) ⁹	ton	57.30	1,520.00	1,600.00	1,600.00
Processing, excludes dried					
Clingstone (California) ^{3 9}	ton	33.70	892.00	940.00	941.00
Pears					
Fresh ^{4 9}	ton	55.60	1,470.00	1,550.00	1,550.00
Dried (California) ^{1 9}	ton	178.00	4,710.00	4,960.00	4,970.00
Plums (California)					
Fresh, equivalent on-tree ⁹	ton	60.20	1,590.00	1,680.00	1,680.00
Prunes, dried (California) ^{1 9}	ton	147.00	3,890.00	4,100.00	4,110.00
Prunes and plums					
Fresh, excludes California ^{5 9}	ton	63.80	1,690.00	1,780.00	1,780.00
Processing, excludes dried ^{1 9}	ton	25.70	681.00	717.00	718.00
Tree nuts ^{6 9}					
Almonds	pound	0.209	5.53	5.83	5.84
Hazelnuts	ton	183.00	4,850.00	5,100.00	5,110.00
Pistachios	pound	0.194	5.14	5.41	5.42
Walnuts	ton	177.00	4,690.00	4,940.00	4,940.00
Vegetables, fresh ⁷					
Carrots ⁸	cwt	2.69	69.10	75.00	75.10
Cauliflower ⁸	cwt	4.31	113.00	120.00	120.00
Celery ⁸	cwt	2.01	54.30	56.10	56.10
Honeydew melons	cwt	2.09	57.50	58.30	58.40
Lettuce	cwt	2.29	62.20	63.90	64.00
Onions ⁸	cwt	1.49	41.60	41.60	41.60
Tomatoes	cwt	4.68	126.00	131.00	131.00

¹ Equivalent returns at processing plant door.

² Equivalent returns at packinghouse door.

³ Equivalent returns for bulk fruit at first delivery point.

⁴ Equivalent packinghouse-door returns for California, New York (apples only), Oregon (except peaches), and Washington. Price at point of first sale for other states.

⁵ Based on "as sold" prices for fresh fruit in all states.

⁶ Prices In-Shell basis except almonds which are shelled basis.

⁷ FOB shipping point prices.

⁸ Includes some processing.

⁹ Non-citrus fruit and tree nut estimates discontinued October 2011. The program was later reinstated with a publication date of March 15, 2012. Parity prices will be published in the July 2012 *Agricultural Prices* report to include these prices.

Reliability of Prices Received Estimates

Definition: Prices received represent sales from producers to first buyers. They include all grades and qualities. The average commodity price from the survey multiplied by the total quantity marketed theoretically should give the total cash receipts for the commodity.

Survey procedures: Primary sales data used to determine grain prices were obtained from probability samples of about 1900 mills and elevators. These procedures ensure that virtually all grain moving into commercial channels has a chance of being included in the survey. Generally, States surveyed account for 90 percent or more of total United States production. Livestock prices are obtained from packers, stockyards, auctions, dealers, and market check data from AMS-USDA, private marketing organizations, and state commodity groups and agencies. Inter-farm sales of grain and livestock are not included since they represent very small percentages of the total marketings. Grain marketed for seed is also excluded. Fruit and vegetable prices are obtained from sample surveys and market check data from AMS-USDA, private marketing organizations, state agencies, and universities.

Summary and estimation procedures: Survey quantities sold are expanded by strata to state levels and used to weight average strata prices to a state average. State prices are then weighted to a United States price based on expanded marketings. Recommendations are prepared by the State Field Offices and reviewed by the Agricultural Statistics Board in Washington, D.C. State recommendations are reviewed for reasonableness with survey data, other States, and recent historic estimates.

Revisions: For most items, the current month's preliminary price represents a 3-5 day period around the 15th of the month. Previous month's prices represent actual dollars received for quantities sold during the entire month. Revisions are published in monthly issues of Agricultural Prices.

Reliability: United States price estimates based on probability surveys generally have a sampling error of less than one percent for the major commodities such as corn, wheat, soybeans, cotton, and rice. Current methods of summarization for non-probability commodities are not designed directly to calculate sampling errors. However, analytical measures approximate the United States relative sampling errors at around five percent. Any nonsampling errors are attributed to such things as the inability to obtain correct information, differences in interpreting questions or definitions, mistakes in coding or processing the data, etc. Efforts are made at each step in the survey process to minimize these nonsampling errors.

Prices Paid by Farmers

The March Index of Prices Paid for Commodities and Services, Interest, Taxes, and Farm Wage Rates (PPITW) at 210 (1990-1992=100) is up 0.5 percent from February 2012 and 4.5 percent above March 2011.

Production index: The March index, at 222, is unchanged from last month but increased 5.2 percent from last year. Compared to February, higher prices in March for diesel, gasoline, feed grains, and concentrates offset lower prices for nitrogen, potash & phosphate, feeder cattle, and supplements.

Feed: The March index, at 226, increased 0.9 percent from February and 6.6 percent from last March. Since February, higher prices for feed grains, hay & forages, and concentrates offset lower prices for supplements and complete feeds.

Livestock and poultry: The March index, at 184, decreased 0.5 percent from last month but increased 16 percent from last year. Since February, prices for feeder cattle and feeder pigs are lower. The March feeder cattle price, at \$159.60 per cwt, is down \$1.00 per cwt from the February price. March feeder pigs averaged \$203.00 per cwt, down \$2.00 per cwt from February.

Fertilizer: The March index, at 322, is down 3.6 percent from February but 1.3 percent above March a year ago. Since February, lower prices for nitrogen and potash & phosphate more than offset higher prices for mixed fertilizer.

Chemicals: The March index, at 157, increased 2.6 percent from February and 8.3 percent from last March. Compared with last month, prices for herbicides, insecticides, and fungicides/other are higher.

Fuels: The March index, at 377, is up 4.7 percent from a month earlier and 3.9 percent above March 2011. Compared with last month, prices for diesel, gasoline, and LP gas are higher.

Machinery: The March index, at 244, decreased 0.4 percent from February but increased 2.1 percent from last March. Compared with last month, prices for other machinery and self-propelled machinery are lower.

Consumer price index: The February 2012 Consumer Price Index, as issued by the Bureau of Labor Statistics, for all urban consumers (CPI-U) increased 0.4 percent before seasonal adjustment to a level of 227.663 (1982-1984=100). The January index is 226.665. For the 12 month period ending in February, the overall index increased 2.9 percent.

Prices Paid Indexes and Related Parity Ratios – United States: March 2012 with Comparisons

[Revised historical price indexes for months not shown are available at www.nass.usda.gov]

Indexes and ratios	1910-1914 Base			1990-1992 Base		
	March 2011	February 2012	March 2012	March 2011	February 2012	March 2012
	(percent)	(percent)	(percent)	(percent)	(percent)	(percent)
Prices paid by farmers for commodities, services, interest, taxes, and wage rates (PPITW)	2674	2785	2793	201	209	210
Production	2052	2150	2156	211	222	222
Feed	1037	1092	1106	212	224	226
Livestock and poultry	2027	2367	2353	159	185	184
Seeds	3327	3327	3327	336	336	336
Fertilizer	1165	1224	1179	318	334	322
Chemicals	894	948	973	145	153	157
Fuels	2801	2782	2910	363	360	377
Supplies and repairs	1155	1199	1199	163	169	169
Autos and trucks	3067	3133	3158	115	118	119
Machinery	6002	6135	6129	239	245	244
Building materials	2305	2370	2393	170	174	176
Services and rent	2119	2181	2183	(NA)	(NA)	(NA)
Services	(NA)	(NA)	(NA)	164	167	167
Rent	(NA)	(NA)	(NA)	205	212	212
Interest ¹	3381	3635	3635	135	145	145
Taxes ²	5935	6225	6225	222	232	232
Wage rates	7301	7205	7205	195	193	193
Production, interest, taxes, and wage rates (PITW)	2784	2908	2916	207	216	217
Family living-CPI ³	2122	2162	2172	166	169	170
Ratio (received/paid)	(NA)	(NA)	(NA)	86	87	89
Parity ratio ⁴	41	41	42	(NA)	(NA)	(NA)
Parity ratio adjusted ⁵	42	42	43	(NA)	(NA)	(NA)
PPITW adjusted for productivity ⁶	1464	1473	1475	(NA)	(NA)	(NA)
Crop sector (PPITW)	(NA)	(NA)	(NA)	211	218	218
Livestock sector (PPITW)	(NA)	(NA)	(NA)	190	200	201
Farm sector (production)	(NA)	(NA)	(NA)	214	230	231
Non-farm sector (production)	(NA)	(NA)	(NA)	210	217	217

(NA) Not available.

¹ Interest per acre on farm real estate debt and interest rate on farm non-real estate debt.

² Farm real estate taxes payable per acre.

³ Bureau of Labor Statistics, Consumer Price Index for all urban consumers (CPI-U), for the previous month converted by the USDA.

⁴ Ratio of index of prices received to PPITW (1910-1914=100).

⁵ Based on estimated cash receipts, from marketings and government payments, the preliminary adjustment factor is 1.044 for 2012 and the revised factor is 1.041 for 2011.

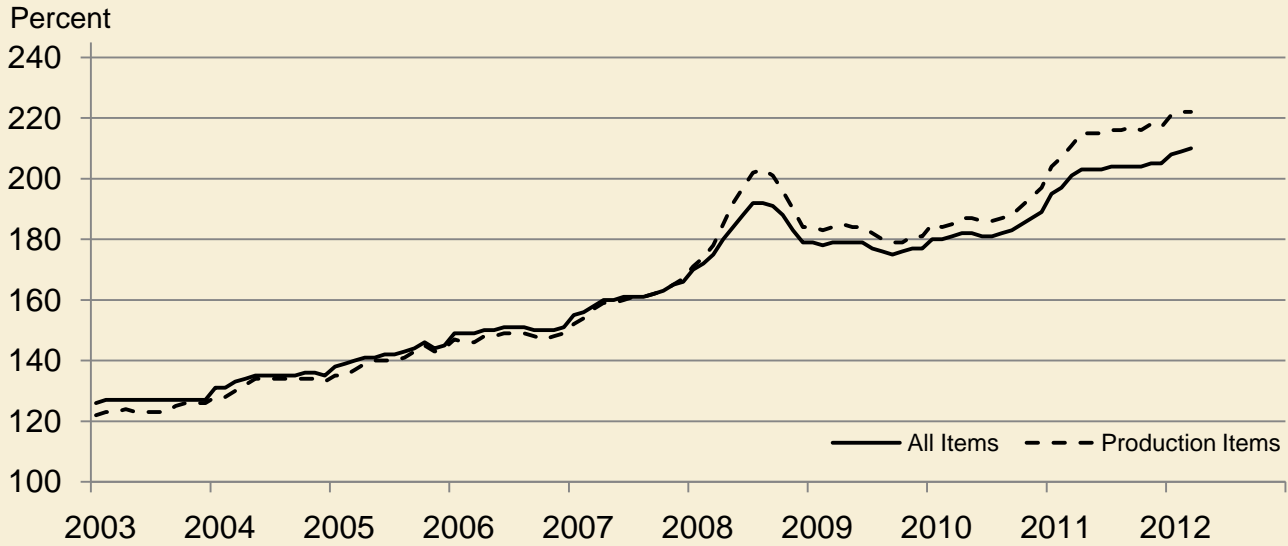
⁶ PPITW is adjusted based on productivity trend for the prior 15 years.

Prices Paid Indexes and Annual Weights for Input Components and Sub-Components – United States: March 2012 with Comparisons

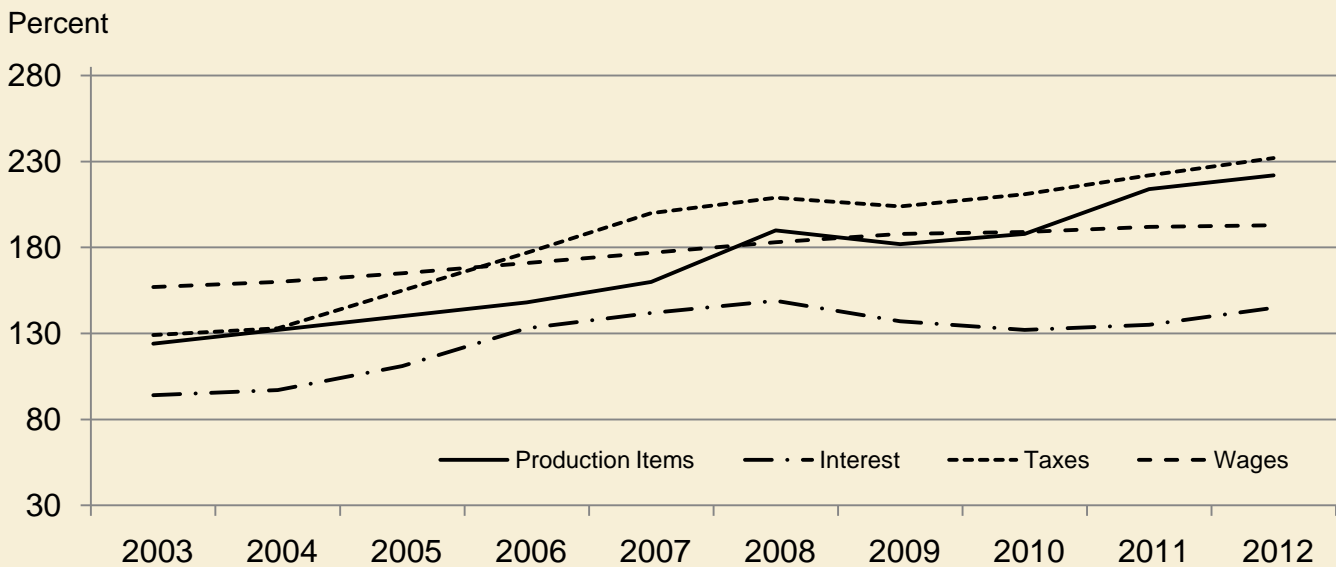
[Revised historical price indexes for months not shown are available at www.nass.usda.gov. Relative weights are a five year moving average]

	Relative weights		Indexes (1990-1992=100)		
	2011	2012	March 2011	February 2012	March 2012
	(percent)	(percent)	(percent)	(percent)	(percent)
Production items	70.6	71.1	211	222	222
Feed	12.2	12.7	212	224	226
Feed grains	1.7	1.8	240	269	277
Complete feeds	6.0	6.2	217	220	219
Hay and forages	1.5	1.6	166	227	234
Concentrates	1.9	2.0	204	194	200
Supplements	1.0	1.1	225	223	220
Livestock and poultry	8.5	8.3	159	185	184
Feeder cattle	6.6	6.5	157	190	189
Feeder pigs	0.7	0.7	221	223	221
Milk cow replacements	0.7	0.7	115	129	129
Poultry	0.5	0.5	151	151	151
Seeds	4.1	4.3	336	336	336
Field crops	3.7	3.9	356	356	356
Grasses and legumes	0.4	0.4	145	145	145
Fertilizer	5.5	5.7	318	334	322
Mixed fertilizer	2.4	2.5	310	330	333
Nitrogen	2.3	2.4	311	331	305
Potash and phosphate	0.8	0.8	361	357	335
Chemicals	3.3	3.2	145	153	157
Herbicides	2.1	2.0	130	138	141
Insecticides	0.7	0.7	167	177	182
Fungicides and other	0.5	0.5	174	185	189
Fuels	4.0	4.0	363	360	377
Diesel	2.5	2.5	403	408	425
Gasoline	0.8	0.8	308	310	331
LP gas	0.7	0.7	284	248	257
Supplies and repairs	4.6	4.6	163	169	169
Supplies	1.5	1.5	158	164	164
Repairs	3.0	3.0	165	171	171
Autos and trucks	1.4	1.2	115	118	119
Autos	0.2	0.2	112	116	116
Trucks	1.2	1.1	116	118	119
Machinery	4.3	4.3	239	245	244
Tractors	0.9	0.9	203	206	206
Self-propelled	1.7	1.7	250	254	254
Other machinery	1.6	1.6	249	257	256
Building materials	4.4	4.2	170	174	176
Services	12.1	12.0	164	167	167
Custom rates	1.2	1.2	148	148	148
Other services	10.9	10.7	165	169	169
Rent	6.3	6.6	205	212	212
Cash	3.4	3.5	262	270	270
Share	2.9	3.0	139	145	145
Interest	3.5	3.4	135	145	145
Taxes	3.1	3.1	222	232	232
Wage rates	7.4	7.2	195	193	193
Family living-CPI	15.4	15.3	166	169	170

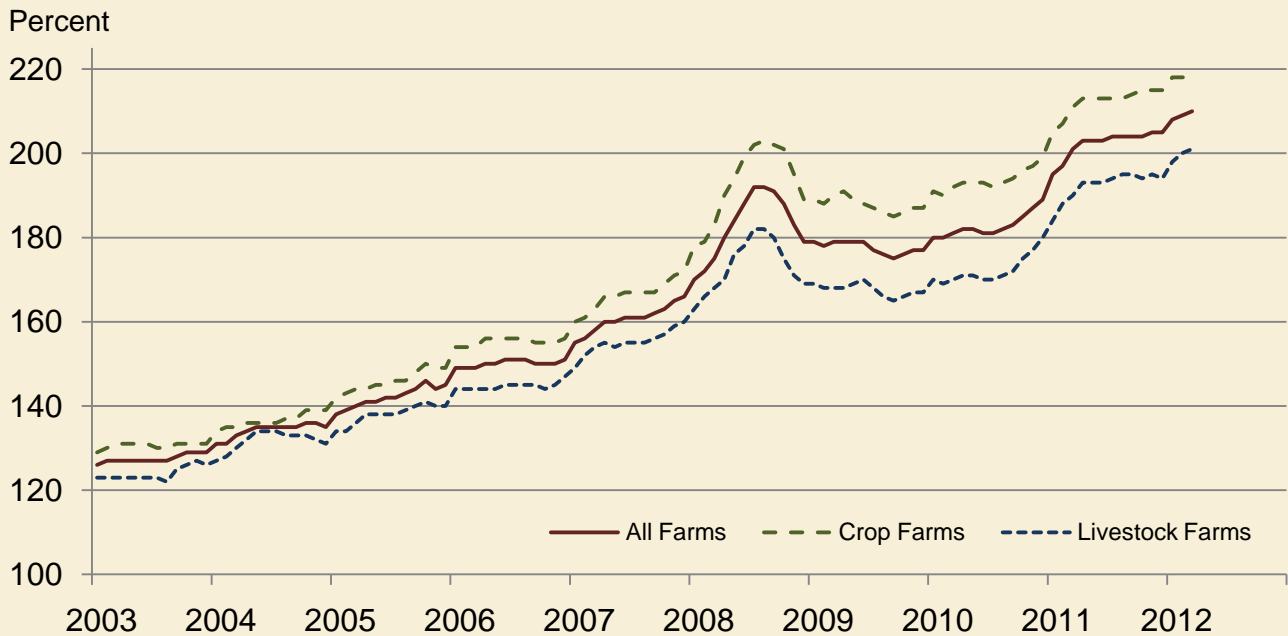
Paid Indexes by Month, All Items and Production Items – United States: 1990-1992=100



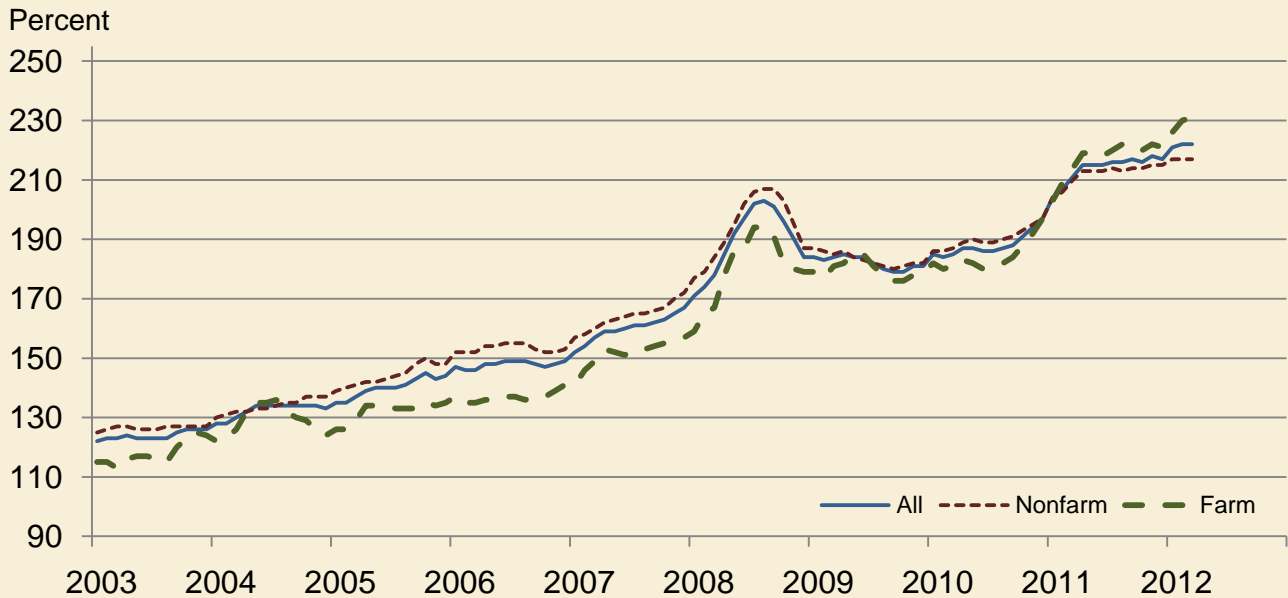
Paid Indexes, Annual Averages, Production Items, Interest, Taxes, and Wages – United States: 1990-1992=100



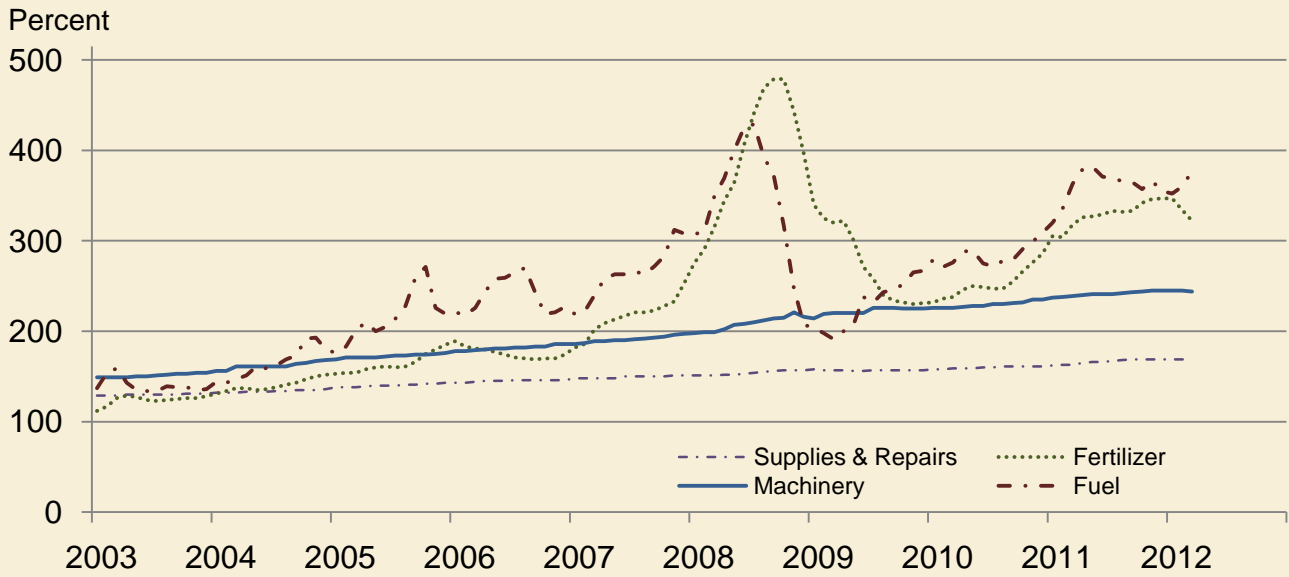
Paid Indexes by Farm Type and Month, All Items – United States: 1990-1992=100



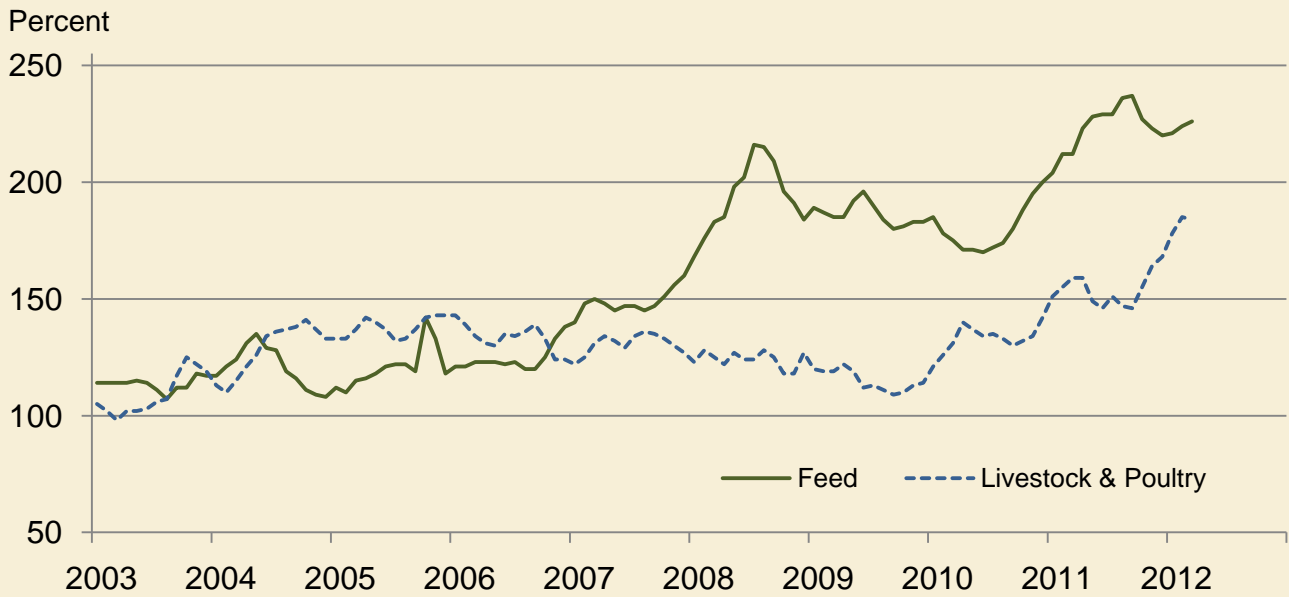
Paid Indexes by Origin and Month, All Production Items – United States: 1990-1992=100



Paid Indexes by Non-Farm Sector and Month, Supplies & Repairs, Fertilizer, Machinery, and Fuel – United States: 1990-1992=100



Paid Indexes by Month, Feed and Livestock & Poultry – United States: 1990-1992=100



Feed Price Ratios – United States: March 2012 with Comparisons

Feed price ratio ¹	March 2011	February 2012	Preliminary March 2012
Broiler-feed: pounds of broiler grower feed equal in value to 1 pound of broiler, live weight ²	3.4	3.5	3.6
Market egg feed: pounds of laying feed equal in value to 1 dozen eggs ³	5.1	5.0	5.6
Hog-corn: bushels of corn equal in value to 100 pounds of hog, live weight	11.4	10.4	10.1
Milk-feed: pounds of 16% mixed dairy feed equal in value to 1 pound of whole milk ⁴	2.12	1.55	1.48
Steer and heifer-corn: bushels of corn equal in value to 100 pounds of steer & heifers, live weight	21.3	20.9	20.7
Turkey-feed: pounds of turkey grower equal in value to 1 pound of turkey, live weight ⁵	4.4	4.7	4.7

¹ Effective January 1995, prices of commercial prepared feeds are based on current United States prices received for corn, soybeans, alfalfa hay, and all wheat.

² The price of commercial prepared broiler feed is based on current United States prices received for corn and soybeans. The modeled feed uses 58 percent corn and 42 percent soybeans.

³ The price of commercial prepared layer feed is based on current United States prices received for corn and soybeans. The modeled feed uses 75 percent corn and 25 percent soybeans.

⁴ The price of commercial prepared dairy feed is based on current United States prices received for corn, soybeans, and alfalfa hay. The modeled feed uses 51 percent corn, 41 percent alfalfa hay, and 8 percent soybeans.

⁵ The price of commercial prepared turkey feed is based on current United States prices received for corn, soybeans, and wheat. The modeled feed uses 51 percent corn, 28 percent soybeans, and 21 percent wheat.

Prices Received Used to Calculate Feed Price Ratios – United States: March 2012 with Comparisons

[Price data source for livestock and poultry commodities is United States Department of Agriculture's Agricultural Marketing Service]

Item	March 2011	February 2012	Preliminary March 2012
	(dollars)	(dollars)	(dollars)
Broilers, livepound	0.490	0.530	0.570
Eggs, marketdozen	0.652	0.669	0.791
Hogs, allcwt	62.90	65.50	65.70
Milk, allcwt	20.40	17.70	17.40
Steers and heiferscwt	118.00	131.00	134.00
Turkeys, livepound	0.599	0.650	0.685
Cornbushel	5.53	6.28	6.48
Hay, alfalfaton	142.00	198.00	201.00
Soybeansbushel	12.70	12.20	13.10
Wheat, allbushel	7.55	7.10	7.24

Prices Paid for Feeder Livestock – United States: March 2012 with Comparisons

[Price data source is United States Department of Agriculture's Agricultural Marketing Service]

Item	March 2011	February 2012	Preliminary March 2012
	(dollars)	(dollars)	(dollars)
Feeder cattle and calvescwt	133.20	160.60	159.60
Feeder pigscwt	203.00	205.00	203.00

Reliability of Prices Paid Estimates

Definition: Prices paid by farmers represent the average costs of inputs purchased by farmers and ranchers to produce agricultural commodities. Conceptually, the average price when multiplied by quantity purchased should equal total producer expenditures for the item.

Survey procedures: The prices paid data are obtained from establishments that sell goods and services to farmers and ranchers. Annually, about 8,500 firms are randomly selected from lists by type of item sold with an average response rate in the range of 75-80 percent. Firms are asked to report the price for the specified item "most commonly bought by farmers" or that was the "volume seller". Approximately 135 items are surveyed each March to represent all production input items purchased. The survey reference period for most items is the five business days centered around the 15th of the month. Separate prices paid surveys are conducted for agricultural chemicals, fuels, feed, fertilizer, machinery, and seed.

Summary and estimation procedures: The annual March Prices Paid Survey is summarized as a nonprobability survey. Average prices reported are aggregated to the region and United States level using weights available from expenditure data and other administrative sources. Price recommendations are prepared by the State Field Offices and Headquarters for review by the Agricultural Statistics Board in Washington, D.C. Also, the change in price level for individual items surveyed are combined to the regional and United States levels, and are published as prices paid indexes referenced to a specific base period. Prices paid indexes for new autos and trucks, building materials, farm supplies, motor supplies, and marketing containers are updated based on price changes measured in selected Bureau of Labor Statistics (BLS) indexes.

Revisions: Any revisions are published in the monthly and in annual issues of Agricultural Prices. The basis for revision must be supported by additional data that directly affect the level of the estimate. More revisions are likely for March when separate prices paid surveys are conducted, in lieu of BLS indexes, by the USDA to measure price change.

Reliability: Current methods of summarization for the March data are not designed directly to calculate sampling errors. However, analytical measures approximate the United States relative sampling errors for major items around 10 percent. Any nonsampling errors are attributed to such things as the inability to obtain correct information, differences in interpreting questions or definitions, mistakes in coding or processing the data, etc. Efforts are made at each step in the survey process to minimize these nonsampling errors.

Program change: Effective January 1, 1995, the National Agricultural Statistics Service updated the weights and changed the construction of its prices paid and received by farmers indexes. A Federal Register Notice dated October 28, 1994 discussed these program modifications.

A 1990-1992 reference and base period replaced the 1977 reference and 1971-1973 base weight period. Five-year moving average weights replaced the current fixed 1971-1973 base period weights. The 1910-1914=100 price indexes, required by statute for computing parity prices, were linked forward based on the changes in the new 1990-1992=100 indexes. The new indexes were constructed by multiplying the ratios of the current prices to the base period prices by the moving average weights (adjusted for seasonal marketing patterns for the prices received indexes).

Information Contacts

Direct general questions to Dale Hawks, Acting Chief, Environmental, Economics and Demographics Branch at (202) 720-6146. Below are the commodity specialists to contact for additional information.

Crop Prices Received

Lance Honig, Chief, Crops Branch	(202) 720-2127
Jacqueline Moore, Head, Field Crops Section	(202) 720-2127
Suzanne Avilla – Peanuts, Rice.....	(202) 720-7688
Bryan Durham – Oats, Rye, Wheat.....	(202) 720-8068
Steve Maliszewski – Cotton, Cotton Ginnings, Sorghum.....	(202) 720-5944
Anthony Prillaman – Corn, Proso Millet, Flaxseed	(202) 720-9526
Julie Schmidt – Crop Weather, Barley, Hay	(202) 720-7621
Travis Thorson – Soybeans, Sunflower, Other Oilseeds.....	(202) 720-7369
Jorge Garcia-Pratts, Head, Fruits, Vegetables and Special Crops Section.....	(202) 720-2127
Debbie Flippin – Fresh and Processing Vegetables, Onions, Strawberries.....	(202) 720-2157
Fred Granja – Apples, Apricots, Cherries, Plums, Prunes, Tobacco	(202) 720-4288
Erika White – Floriculture, Maple Syrup, Nursery, Tree Nuts	(202) 720-4215
Chris Hawthorn – Citrus, Coffee, Sugar Crops, Grapes, Tropical Fruits.....	(202) 720-5412
Daphne Schauber – Berries, Cranberries, Potatoes, Sweet Potatoes	(202) 720-4285
Dan Norris – Austrian Winter Peas, Dry Edible Peas, Lentils, Mints, Mushrooms, Peaches, Pears, Wrinkled Seed Peas, Dry Beans	(202) 720-3250

Livestock Prices Received

Dan Kerestes, Chief, Livestock Branch	(202) 720-3570
Scott Hollis, Head, Livestock Section.....	(202) 720-3570
Travis Averill – Cattle.....	(202) 720-3040
Mike Miller – Milk, Milk Cows	(202) 720-3278
Doug Bounds – Hogs	(202) 720-3106
Bruce Boess, Head, Poultry and Specialty Commodities Section.....	(202) 720-3570
Cody Brokmeyer – Turkeys.....	(202) 690-3237
LaKeya Jones – Honey	(202) 720-0585
Kim Linonis – Eggs.....	(202) 690-8632
Miste Salmon – Broilers.....	(202) 720-3244

Indexes, Prices Paid, and Parity Prices

Dale Hawks, Acting Chief, Environmental, Economics and Demographics Branch.....	(202) 720-6146
Scott Shimmin, Acting Head, Economics Section	(202) 690-3231
Daryl Brinkman – Prices Received Indexes, Parity Prices	(202) 720-8844
Scott Shimmin – Grazing Fees.....	(202) 690-3231
Vincent Davis – Prices Paid Indexes, Prices Paid for Feed, Fertilizer, Agricultural Chemicals, Seeds, Farm Supplies and Repairs, Farm Machinery, Fuels, Feeder Livestock, Poultry Chicks, Feed Price Ratios, Autos & Trucks.....	(202) 690-3229

Access to NASS Reports

For your convenience, you may access NASS reports and products the following ways:

- All reports are available electronically, at no cost, on the NASS web site: <http://www.nass.usda.gov>
- Both national and state specific reports are available via a free e-mail subscription. To set-up this free subscription, visit <http://www.nass.usda.gov> and in the “Follow NASS” box under “Receive reports by Email,” click on “National” or “State” to select the reports you would like to receive.
- Printed reports may be purchased from the National Technical Information Service (NTIS) by calling toll-free (800) 999-6779, or (703) 605-6220 if calling from outside the United States or Canada. Accepted methods of payment are Visa, MasterCard, check, or money order.

For more information on NASS surveys and reports, call the NASS Agricultural Statistics Hotline at (800) 727-9540, 7:30 a.m. to 4:00 p.m. ET, or e-mail: nass@nass.usda.gov.

The United States Department of Agriculture (USDA) prohibits discrimination in all its programs and activities on the basis of race, color, national origin, age, disability, and where applicable, sex, marital status, familial status, parental status, religion, sexual orientation, political beliefs, genetic information, reprisal, or because all or a part of an individual's income is derived from any public assistance program. (Not all prohibited bases apply to all programs.) Persons with disabilities who require alternative means for communication of program information (Braille, large print, audiotape, etc.) should contact USDA's TARGET Center at (202) 720-2600 (voice and TDD).

To file a complaint of discrimination, write to USDA, Assistant Secretary for Civil Rights, Office of the Assistant Secretary for Civil Rights, 1400 Independence Avenue, S.W., Stop 9410, Washington, DC 20250-9410, or call toll-free at (866) 632-9992 (English) or (800) 877-8339 (TDD) or (866) 377-8642 (English Federal-relay) or (800) 845-6136 (Spanish Federal-relay). USDA is an equal opportunity provider and employer.