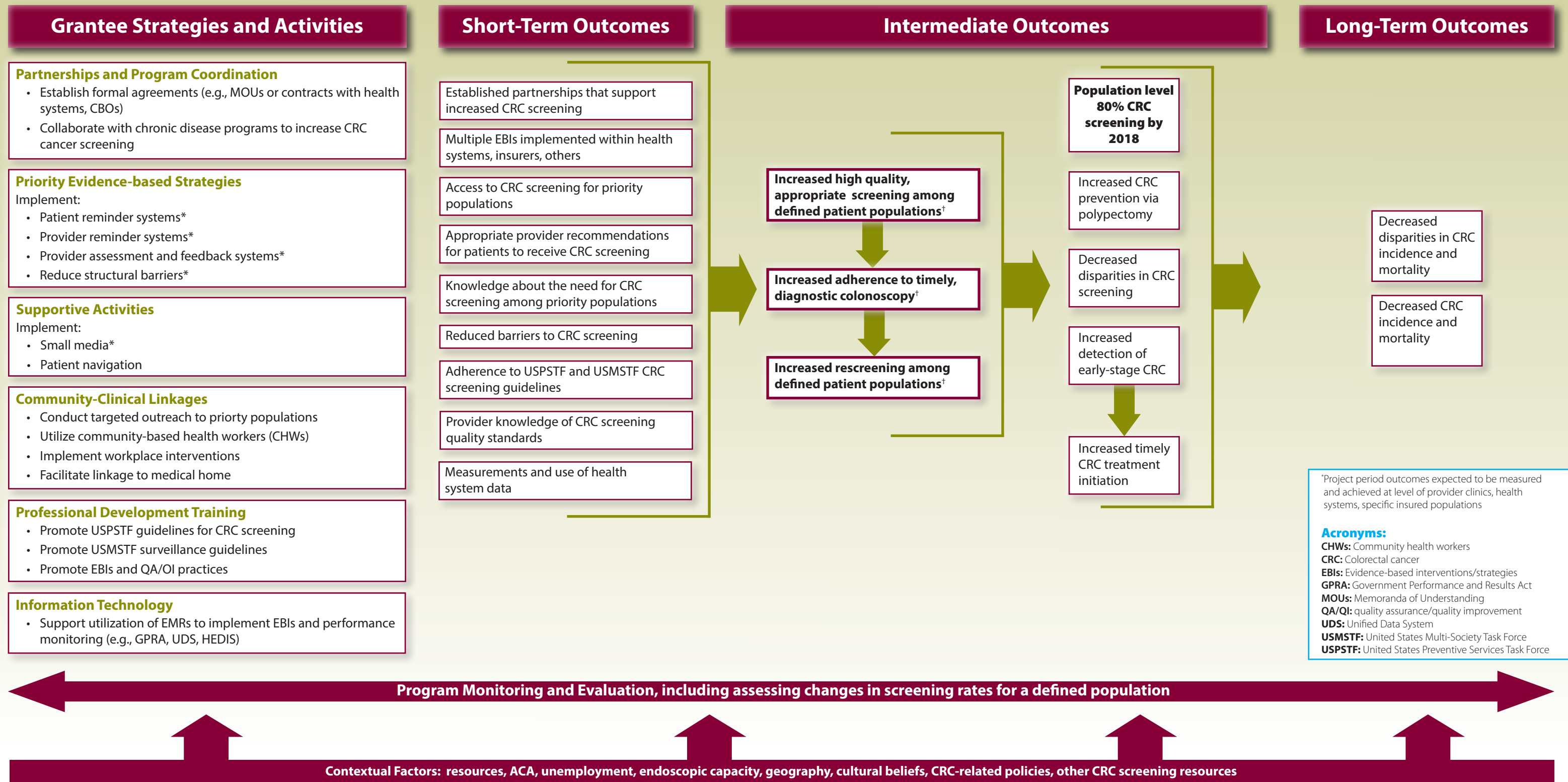


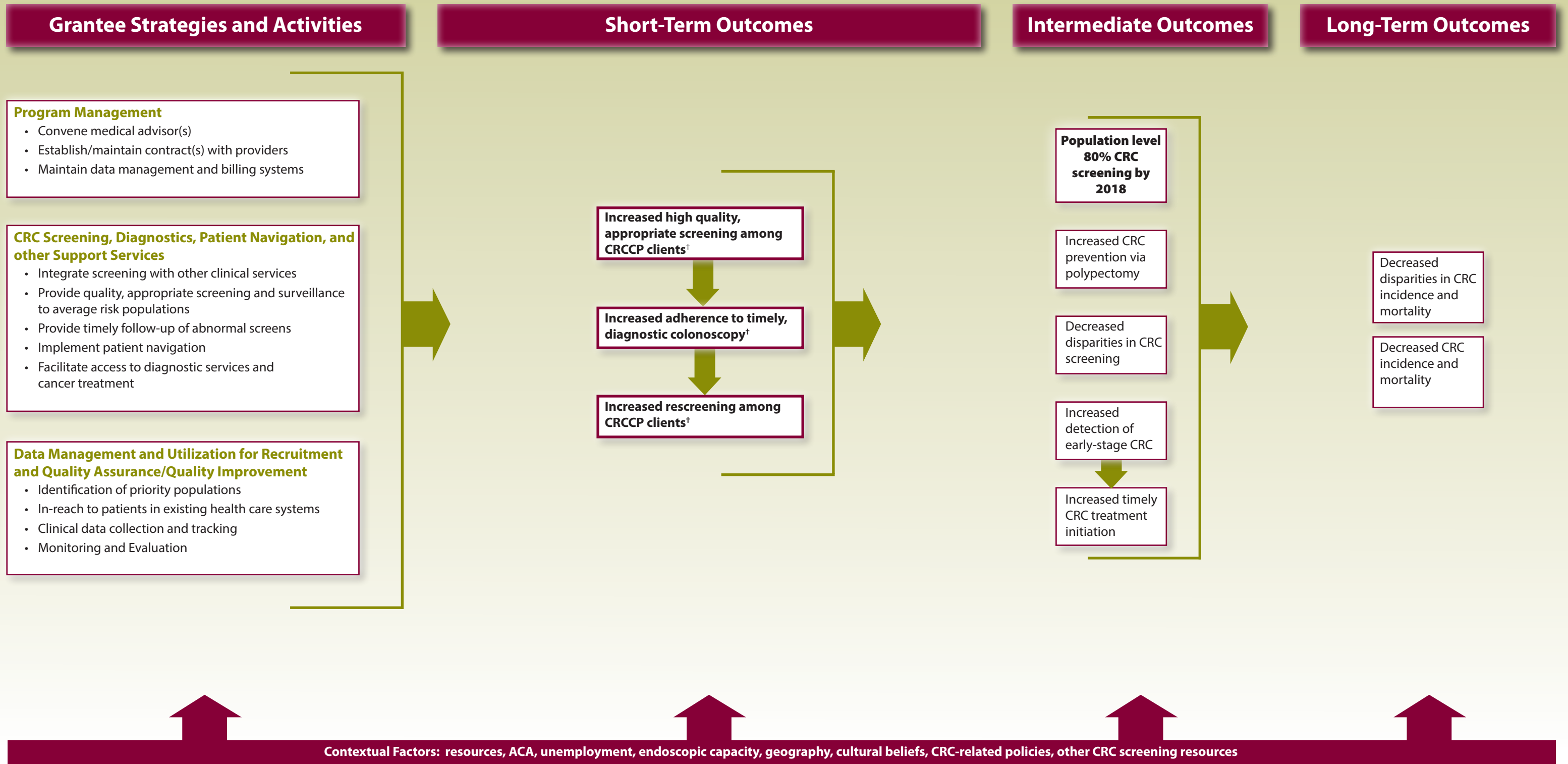
CDC-RFA DP15-1502 Logic Model – Component 1



*Strategies recommended by *Guide to Community Preventive Services* for increasing colorectal cancer screening by FOBT (<http://www.thecommunityguide.org/cancer/index.html>)



CDC-RFA DP15-1502 Logic Model – Component 2



[†]Project period outcomes expected to be measured and achieved among CRCCP clients

Acronyms:
CRC: Colorectal cancer
CRCCP: Colorectal Cancer Control Program



Centers for Disease Control and Prevention
 National Center for Chronic Disease Prevention and Health Promotion