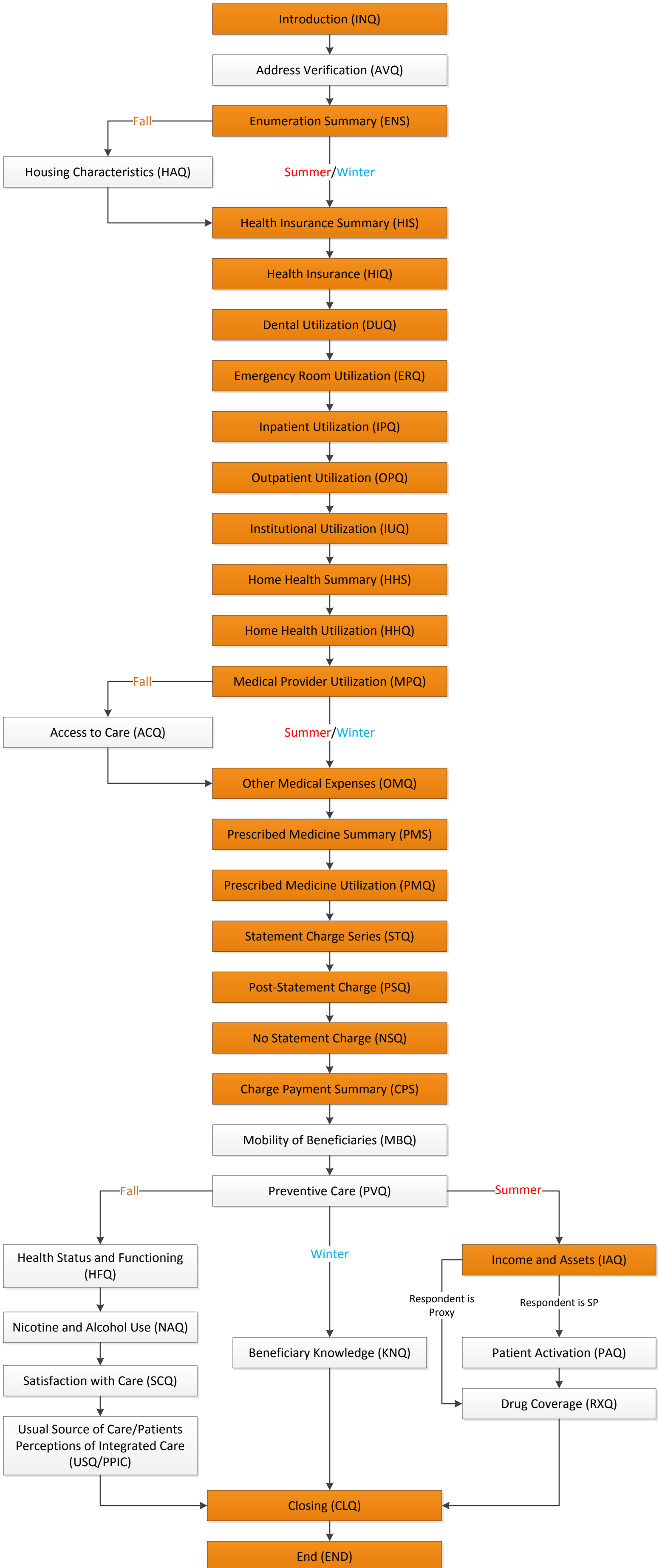


## Respondent Type Information

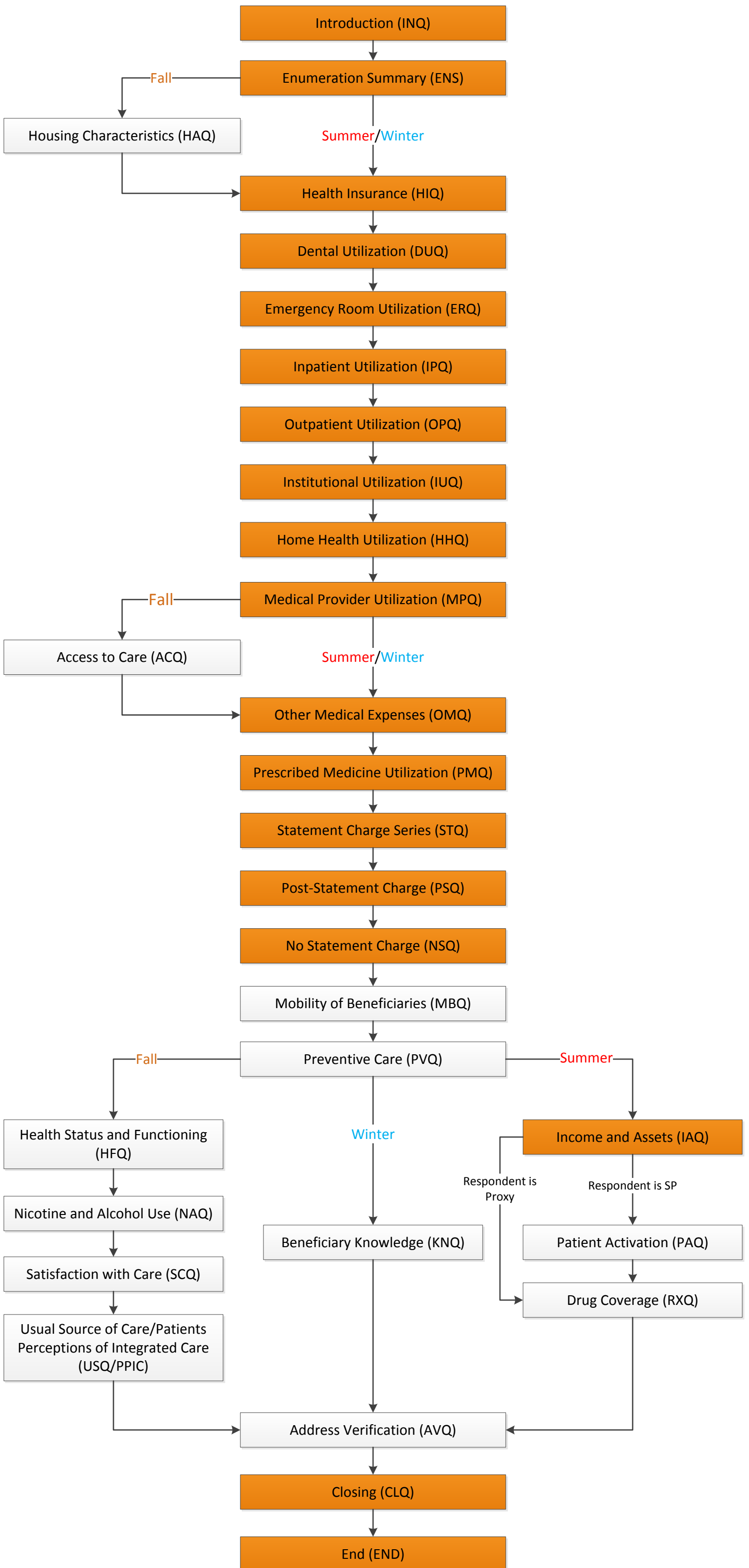
INTTYPE	Name	Description	Valid in round(s)
C001	StandardHadPrev	Standard Continuing SP. SP's last interview was in the Community.	ALL
C002	NewFromFacility	SP's last interview was in a facility. SP has not had a community interview.	ALL
C003	NewFromSupplement	SP is in the Supplemental Sample (their 1st round in the study).	FALL ONLY
C004	StandardSkippedPrev	Standard Continuing SP. SP skipped the previous round.	ALL
C005	LastRndFacSum	SP's last interview was in a facility. SP's last community interview was 2 rounds ago.	ALL
C006	LastRndFacBase	SP's last interview was in a facility. SP's last community interview was 3 or more rounds ago.	ALL
C007	SupSmp1stTimeUtil	SP's 2nd interview. Utilization and cost data is collected for the 1st time.	WINTER ONLY
C008	ExitInterviewHadPrev	SP's last interview. SP is in the Exit Sample. SP's last community interview was in the previous round.	SUMMER ONLY
C009	ExitInterviewSkippedPrev	SP's last interview. SP is in the Exit Sample. SP's last community interview was 2 rounds ago.	SUMMER ONLY
C010	SupSmp1stTimeUtilSkipped	SP's 2nd interview. SP skipped previous round. Utilization and cost data is collected for the 1st time.	SUMMER ONLY

Please note, proxy interviews for deceased respondents only get the sections highlighted in orange. Sections in white are not administered for deceased SPs unless noted (INTTYPE C008, C009 is the single exception).

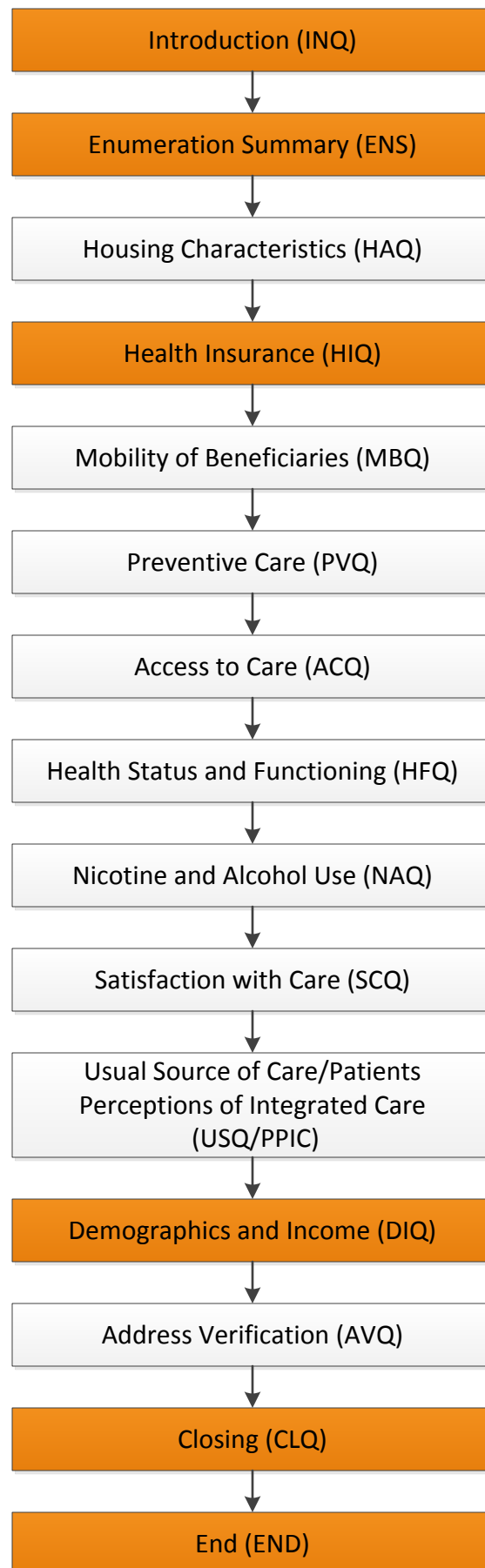
Standard Continuing Respondent, Interviews 3-11  
(INTTYPE = C001, C004)



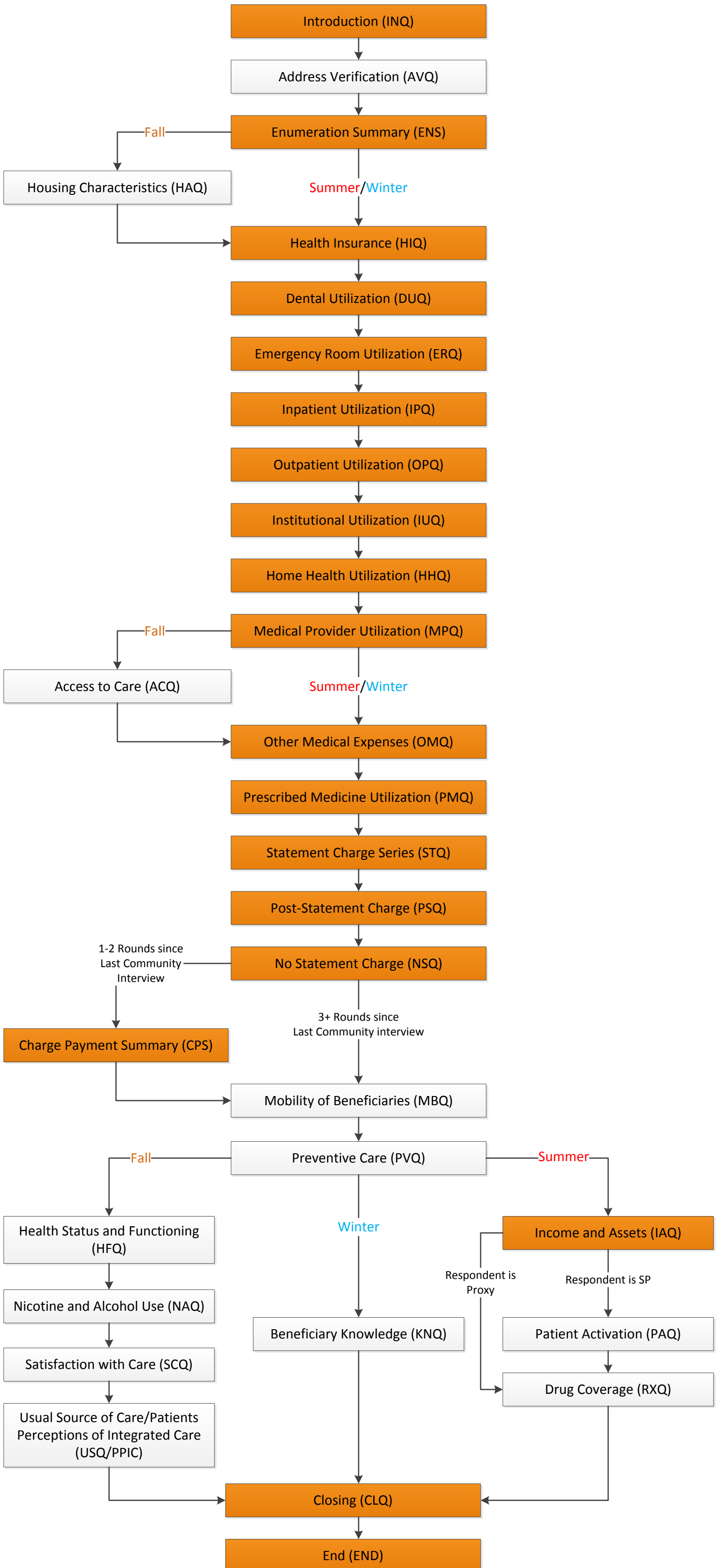
New from Facility Respondent, Interviews 2-11  
(INTTYPE = C002)



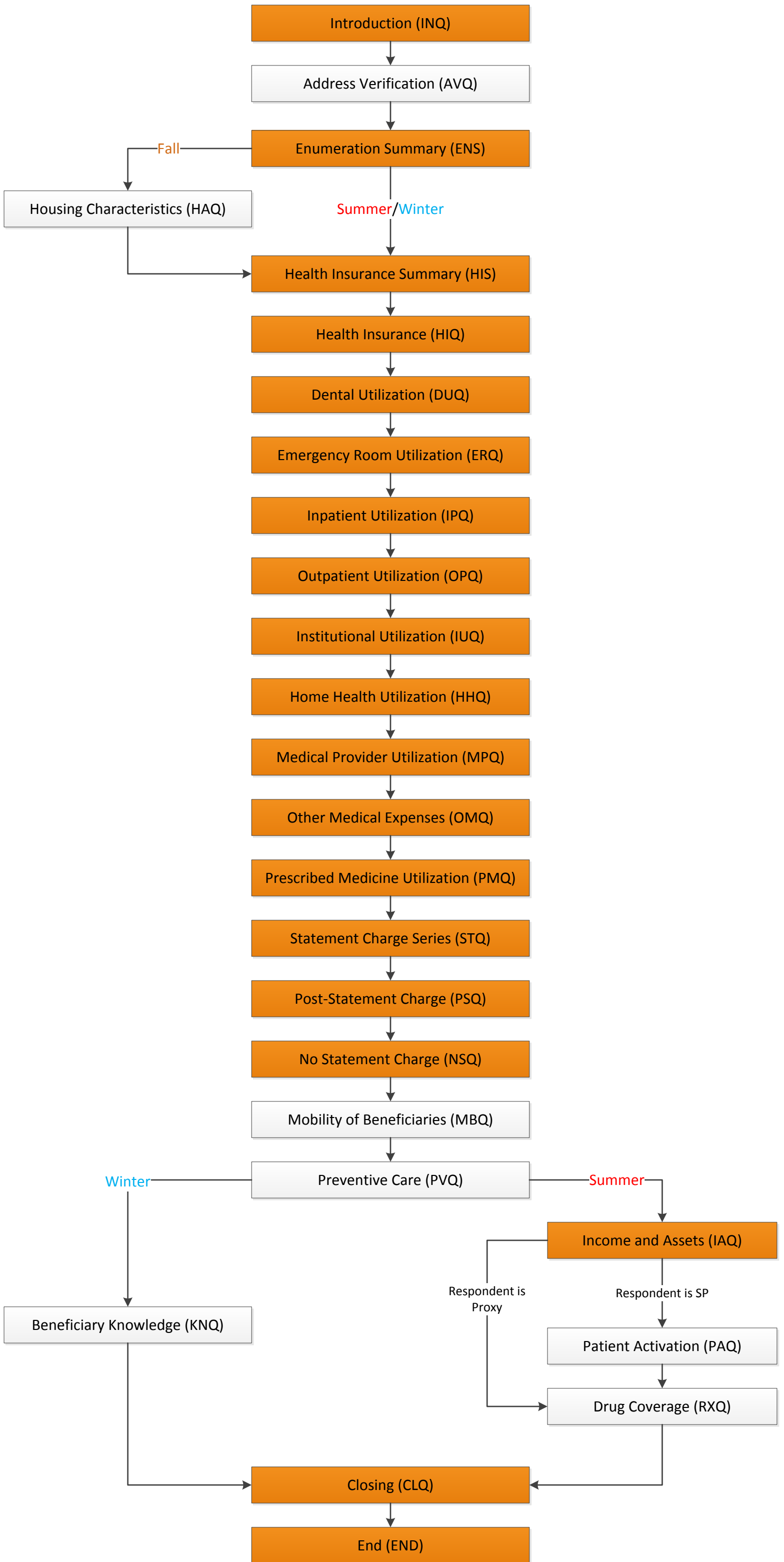
## New Sampled Respondent, Interview 1 (INTTYPE = C003)



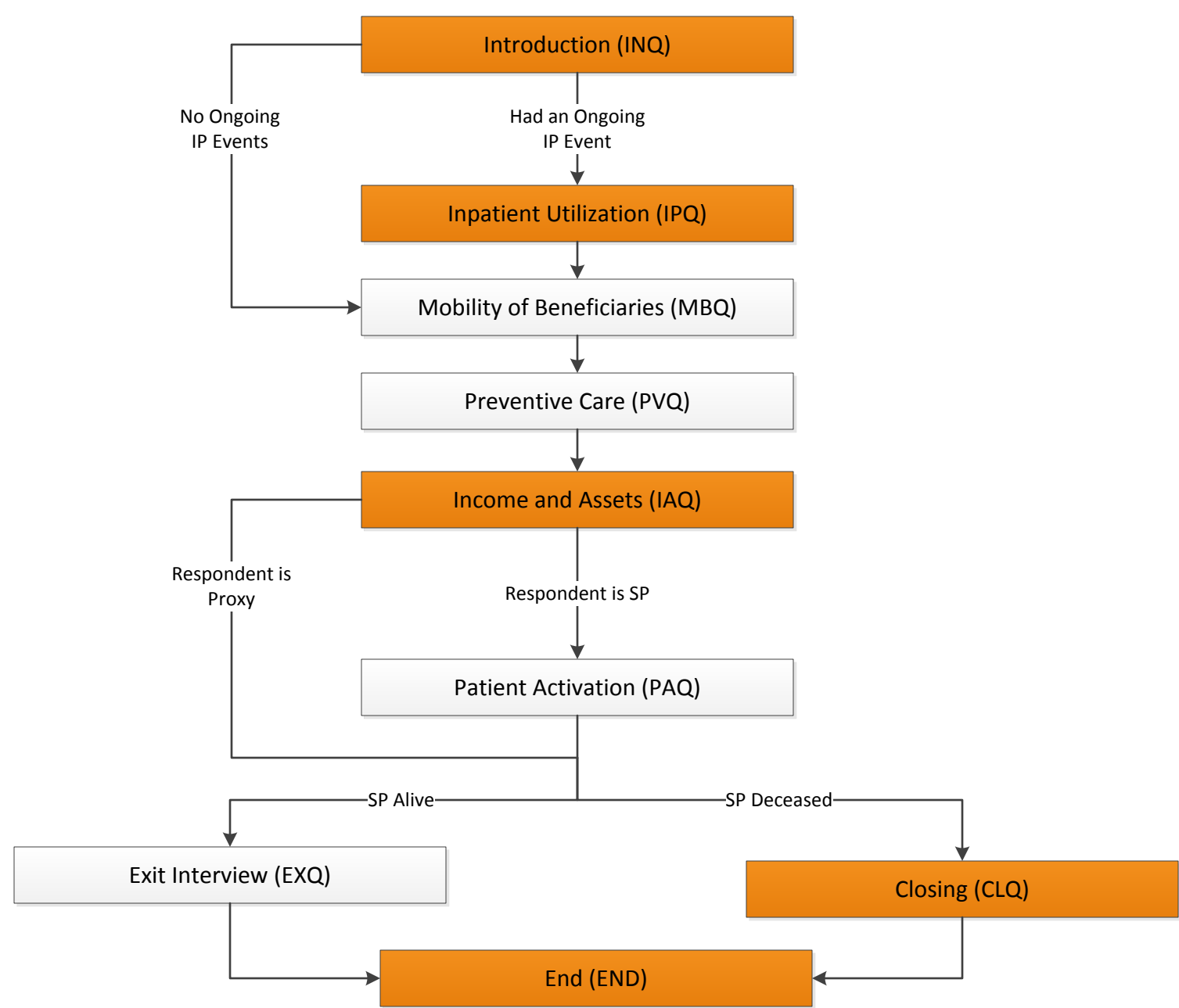
Old from Facility, Interviews 3-11  
(INTTYPE = C005, C006)



First time Utilization, Interview 2 or 3  
(INTTYPE = C007, C010)



Exit Interview, Interview 12  
(INTTYPE = C008)



Exit Interview, Interview 12  
(INTTYPE = C009)

