

OS Objectives, Hypotheses, and Biomarkers

**SECTION 1-A5
PROTOCOL APPENDIX 5**

**WOMEN'S HEALTH INITIATIVE OBSERVATIONAL STUDY
OVERVIEW OF OBJECTIVES AND HYPOTHESES**

1-A5.1 Objectives

The objective of the Observational Study (OS) is to provide information complementary to that obtained from the Clinical Trial (CT). Measurement of baseline characteristics, remeasurement after three years, storage of frozen blood specimens, and ascertainment of clinical events in a large cohort of postmenopausal women allow the following specific objectives to be formulated:

- 1) Prediction of risk of outcome on the basis of:
 - Questionnaires and interview data
 - Physical exam findings
 - Laboratory data
- 2) Extension of results in the CT to related exposures and regimens
- 3) Assessment of temporal relationships between risk factors and disease occurrence
- 4) Documentation of variation in the incidence of cardiovascular disease, cancer, osteoporosis and fracture in postmenopausal women on the basis of geographic region and other demographic characteristics, and an evaluation of the extent to which differences among demographic subgroups in the prevalence of identified risk factors account for such variation. *Table 2-A5.1 - Cumulative Number of Events For 100,000 Women Age 50-79 Years At Baseline* presents estimates of the number of events of various types at 3, 6, and 9 years of follow-up.

1-A5.2 Hypotheses

These hypotheses include those of high priority that have been stated to date. This is not an exhaustive listing and future hypotheses will be added as they are developed. *Table 1-A5.2 - Summary of Exposure/Disease Hypotheses* summarizes the general exposure/disease hypotheses of interest initially.

Disease-Related Hypotheses Classified by Predictive Factors

- 1) **Diet**
 - a) Antioxidant intake (vitamins C and E, carotenoids, selenium, zinc) predicts decreased risk of cancer, coronary heart disease (CHD), and stroke.
 - b) Fiber intake is associated with lower risk of colorectal cancer, breast cancer, and other cancers, as well as CHD and stroke.
 - c) Alcohol intake predicts decreased risk of cardiovascular disease, and increased risk of breast and colorectal cancer.
 - d) Alcohol intake during adolescence increases risk of breast cancer during adulthood.
 - e) Intake of vitamins B6, B12, and folate is associated with decreased risk of CHD and stroke. Folate intake predicts reduced risk of colorectal cancer.
 - f) Coffee and caffeine are related to increased risk of CHD and stroke, as well as fracture.

- g) Coffee and caffeine predict reduced risk of breast and ovarian cancer and increased risk of colorectal cancer.
- h) Salt, alcohol, and calcium intake are predictors of hypertension.
- i) Intake of vitamin D and calcium predicts lower risk of CHD and stroke, as well as cancer.
- j) Dietary fat and fatty acid intake is related to breast, endometrial and other cancers. Different types of dietary fat may have different effects on the risk of breast and other cancers. Dietary fat may also have an effect on breast cancer survival.
- k) Dietary fat and subtypes are related to risk of cardiovascular disease. Trans fatty acids increase risk of CHD and stroke; oleic acid may decrease these risks. Fish and omega-3 FA's predict reduced risks. Dietary fat and subtypes also predict total mortality.
- l) Excessive intake of alcohol is associated with decreased bone density and increased risk of fractures.
- m) Other dietary factors such as intake of excessive carbonated beverages may reduce bone density and increase fracture incidence, possibly secondary to high phosphoric acid content. Similarly, high levels of phosphate in the diet may predispose to bone loss, possibly as a result of increased parathyroid hormone levels.
- n) High protein intake may increase bone loss and fracture due to associated increased calcium excretion.
- o) Increased dietary fiber, magnesium, potassium, calcium, and antioxidant vitamins, as well as reduced dietary fat, decrease the occurrence of non-insulin-dependent diabetes mellitus (NIDDM).
- p) Frequency of eating alters the risk of colorectal cancer.

2) **Physical Activity**

- a) Physical activity independent of adiposity predicts lower risk of CHD and stroke.
- b) Physical activity predicts increased bone mineral density and decreased risk of fracture.
- c) Regular physical activity reduces the incidence of NIDDM.
- d) Physical activity decreases the risk of breast and colorectal cancer.
- e) Physical activity decreases total mortality.

3) **Body Habitus**

- a) Weight, adipose distribution, weight cycling are predictors of CHD, stroke, and cancer.
- b) Height is a predictor of cardiovascular disease and cancer.
- c) Weight gain since early adulthood (age 18) is related to breast, endometrial and colorectal cancer, as well as CHD and stroke.
- d) Body weight is related to breast cancer survival.
- e) Lower weight is related to decreased bone density and osteoporosis-related fractures.
- f) Body fat distribution and weight change predict risk of NIDDM.
- g) Predictors of weight gain in adulthood include decreased physical activity, increased percentage of energy from fat, weight cycling, and obesity in late adolescence.
- h) Blood pressure is associated with waist-hip ratio (WHR) and weight gain.
- i) Some determinants of the variance in waist-hip ratio are modifiable (physical activity, dietary fat, smoking, alcohol, hormone therapy). These and other variables can also be assessed as predictors of change in WHI at the three-year visit.

- j) Higher birth weight is associated with breast cancer.
- 4) **Reproductive factors**
- a) Reproductive factors including increased age at first birth, lower parity, early age at menarche, late menopause, oligomenorrhea, and infertility may be associated with breast, endometrial, ovarian and colorectal cancer.
 - b) Reproductive factors including age at menopause and parity predict risk of CHD and stroke.
 - c) Several reproductive variables including parity and lactation are predictors of bone density and osteoporosis-related fractures.
 - d) Lactation is associated with decreased risk of breast and other cancers. Having been breast fed as an infant may also predict a reduced risk of breast cancer.
 - e) Tubal ligation and hysterectomy reduce risk of ovarian cancer.
- 5) **Medications**
- a) Non-steroidal anti-inflammatory drugs (NSAIDs) may prevent CHD and stroke events, colorectal cancer, and may decrease dementia in arthritis patients.
 - b) Antioxidant drugs may prevent tissue damage when an acute coronary or cerebrovascular occlusion occurs.
 - c) Multivitamin and mineral supplement use may decrease risk of cancer, CHD, stroke, and osteoporotic fractures.
 - d) Past oral contraceptive use:
 - 1) may be associated with increased risk of breast cancer and decreased risk of ovarian and endometrial cancer (variables of interest would include duration, age at first use, use before first full-term pregnancy).
 - 2) is not associated with increased risk of CHD and stroke.
 - 3) is a predictor of bone density and osteoporosis-related fractures.
 - e) Past use of diethylstilbestrol (DES) is associated with increased risk of breast cancer.
 - f) Hormone replacement therapy (HRT) predicts CHD, stroke, cancer, and fracture risk. Dosage, type, duration, and regimen used can be examined.
 - g) Higher endogenous estrogen levels is related to benefit from HRT with regard to fracture risk.
 - h) Medications such as thiazide diuretics are predictors of osteoporosis-related fractures. Also of interest are glucocorticoids, lasix, dilantin and tamoxifen. Further, thyroxine replacement therapy, particularly when associated with suppression of thyroid stimulating hormone, may be a determinant of bone density and fracture risk.
 - i) Antacids with high levels of calcium are related to fracture risk.
 - j) Class of antihypertensive medication may modify the risk of CHD and stroke.
 - k) Cimetidine increases breast cancer risk (via effects on estrogen metabolism).
- 6) **Smoking**
- a) Cigarette smoking is a predictor of reduced bone density and osteoporosis-related fractures.
 - b) Smoking increases risk of CHD, stroke, diabetes, cataracts, colorectal cancer, disability, and total mortality.
 - c) Smoking is a risk factor for asthma in postmenopausal women.
 - d) Exposure to passive smoking is a risk factor for CHD, stroke, cancer and fractures.

- 7) Pathology
- a) Mammographic patterns of dysplasia, as well as benign breast disease histologic subtypes are predictors of breast cancer.
- 8) **Medical History**
- a) History of high cholesterol is related to CHD and stroke events.
 - b) History of high blood pressure is related to CHD and stroke.
 - c) History of benign breast disease alters breast cancer risk (depending on histologic subtype).
 - d) History of polyps is associated with risk of colorectal cancer.
 - e) History of atrial fibrillation is associated with CHD and cerebrovascular events.
 - f) Breast implants increase risk of breast cancer.
 - g) Breast implants increase risk of collagen vascular disorders.
- 9) **Family History**
- a) The magnitude of the increase in risk of cancer, CHD, stroke, and fractures is associated with a positive family history. Also any modifying effect of age at diagnosis in family members can be examined.
- 10) **Behavioral/Psychosocial/Functional**
- a) Participants with greater social support, less depression, or fewer life events, will have fewer chronic diseases, fewer hospitalizations, and lower mortality.
 - b) Moderators of stress predict recurrence of disease.
 - c) Physical function measures assessed at baseline (hand grip, chair stands, timed gait) predict risk of osteoporosis/fractures, CHD, stroke, disability, and total mortality.
- 11) **Environmental/Occupational Exposures**
- a) Sun exposure (assessed by residential history) is associated with CHD, stroke, cancer and fracture risk.
 - b) Organochlorine residues from pesticides increase risk of breast cancer.
 - c) Talc use predicts ovarian cancer.
 - d) Electric blankets/waterbed use predicts increased risk of breast and other cancers.
 - e) Work as a cosmetologist increases risk of breast cancer.
- 12) **Special Populations**
- a) Black women have similar fracture rates to other women, after adjusting for leanness.
 - b) CHD, stroke, cancer and fracture risks are not geographically-related when adjusted for other risk factors.
 - c) CHD, stroke, cancer and fracture risks are not ethnically-related when adjusted for other risk factors.

13) Biological Markers

"Nested" case-control or case-cohort analyses can be performed to assess prediagnostic blood measurements as predictors of subsequent disease. These hypotheses are summarized in *Table 1-A5.3 - Biomarker Hypotheses and Plasma/Serum Volume Required*.

- a) Endogenous sex hormones (estradiol, estrone, prolactin, progesterone, androgens) are predictors of cardiovascular disease, cancer, and osteoporosis.
 - 1) Serum total estradiol, percent free estradiol, percent bioavailable estradiol, estrone, and estrone sulfate are associated with increased risk of breast cancer and decreased risk of CHD/stroke/fractures.
 - 2) Serum progesterone is associated with increased risk of breast cancer.
 - 3) Androgens such as androstenedione, testosterone, dehydroepiandrosterone (DHEA), and dehydroepiandrosterone sulfate (DHEA-S) are associated with increased risk of breast cancer and CHD/stroke and decreased risk of fractures.
 - 4) Peptides such as prolactin are associated with increased risk of breast cancer.
- b) Plasma lipids (total cholesterol and subfractions, apo B, Lp(a), plasma omega-3 fatty acids, and trans fatty acids) are predictors of cardiovascular disease in postmenopausal women. Lp(a) may predict acute MI, sudden death and stroke. The role of plasma lipids as predictors of cancer and total mortality can also be examined.
- c) Insulin has powerful growth-promoting properties and may increase bone density and reduce risk of fracture. Growth hormone secretion, and its consequent metabolic functions, decrease with age and replacement hormone has been used in elders to promote muscle mass and physical function. In addition, the declining production of adrenal steroids dehydroepiandrosterone (DHEA) and 11 β -hydroxyandosterone has been related to lower bone density and offers promise as predictors of bone loss and fracture.
- d) Fasting hyperinsulinemia is a predictor of future occurrence of NIDDM in nondiabetic women and of increased risk of CHD/stroke in both nondiabetic women and diabetic women without prior hypoglycemic therapy. Potentially modifiable determinants of fasting hyperinsulinemia, including physical activity level, body mass index, diet composition, postmenopausal hormone therapy, smoking, and other variables, could also be explored. Further, the role of glycemic control (as measured by serum fructosamine) could be examined as a predictor of CHD/stroke events in both nondiabetic and diabetic women.
- e) Endogenous estrogen levels are associated with dietary fat intake.
- f) Plasma antioxidants (vitamin C, vitamin E, carotenoids, ubiquinol, zinc, selenium) are associated with risk of breast cancer, ovarian cancer, endometrial cancer, colorectal cancer, CHD, and stroke. Levels of antioxidants will be affected by smoking.
- g) Plasma retinol and cholecalciferol are associated with reduced risk of breast and other cancers.
- h) Blood levels of organochlorine residues are associated with increased breast cancer risk.
- i) Hemostatic factors (TPA, PAI, fibrinogen, Factor II) are predictors of CHD and stroke and venous thromboembolic disease. Factor VII levels are associated with levels of Lp(a).
- j) Serum levels of 25-hydroxyvitamin D₃ are associated with higher levels of HDL.
- k) Other markers such as homocysteine, folate, iron/ferritin, vitamins B6 and B12, calcium, magnesium, anti-cardiolipin antibodies, sialic acid, ceruloplasmin level may be related to CHD and stroke.

14) Genetic markers

White blood cell DNA can be used to explore genetic markers for the prediction of cancer, CHD, stroke, diabetes, and osteoporosis.

Examples:

- a) Estrogen-receptor gene
- b) Vitamin D receptor gene
- c) Colorectal cancer genes
- d) P53
- e) Glycogen synthase gene

Quality of Life Hypotheses

- a) The influence of several baseline variables, including physical activity level, diet, body habitus, smoking and co-morbid conditions, can be examined in relation to quality of life in the cohort.
- b) Use of hormone replacement therapy can be assessed in relation to quality of life.
- c) Participants with greater social support who develop chronic diseases can be assessed in relation to quality of life.

Outcome Research Hypotheses**Functional Outcomes of Chronic Illness**

This would require baseline and periodic testing for physical and cognitive functions; simple self-report and performance testing protocols are available. Social variables would include impact on women's employment, insurance availability, social networks and support, care-giving activities, family structure, and personal and family assets. This may be valuable for community-based health and social planning.

Risk Factors for Functional Severity and Impact of Chronic Conditions

The goal here is to determine whether "standard" vascular risk factors (e.g., diabetes, hypertension, smoking habits) and other social and hygienic behaviors predict whether illnesses are fatal vs. non-fatal, and among survivors, predict disease severity in terms of functional impact and use of medical services. This could be done for incident diabetes mellitus, myocardial infarction, stroke, hip and spine fracture and also for various common neoplasms and neurologic illnesses.

Table 1-A5.1
Cumulative Number of Events For 100,000 Women Age 50-79 Years At Baseline

Average Years of Follow-Up	3	6	9
Total Deaths	5,000	11,100	18,200
CHD	1,900	4,200	6,700
CVD	4,000	8,500	13,800
Breast Cancer	1,000	2,000	3,100
Colorectal Cancer	500	1,100	1,900
Composite Fracture	3,300	7,000	11,200
Diabetes	1,500	3,330	5,460

Table 1-A5.2
Summary of Exposure/Disease Hypotheses

	CHD	Stroke	Breast Cancer	Colorectal Cancer	Fractures	Diabetes
Diet	X	X	X	X	X	X
Physical Activity	X	X	X	X	X	X
Body Habitus	X	X	X	X	X	X
Reproductive	X	X	X	X	X	
Medications	X	X	X	X	X	
Smoking	X	X		X	X	X
Pathology	X		X			
Medical History	X	X	X	X		
Family History	X	X	X	X	X	
Behavioral/ Psychosocial	X	X	X	X	X	X
Environmental	X	X	X	X	X	
Special Populations	X	X	X	X	X	X
Biological Markers	X	X	X	X	X	X

**Table 1-A5.3
Biomarker Hypotheses and Plasma/Serum Volume Required**

Biomarkers	End points					Volume of Plasma/Serum Required
	Breast Cancer*	Colorectal Cancer	CHD/Stroke	Fractures	Diabetes	
Endogenous estrogen levels (total estradiol, % bioavailable estradiol, estrone, estrone-sulfate)	↑		↓	↓		2.5 ml
Endogenous androgens (androstenedione, testosterone, free testos, DHT, DHEA, DHEA-S)	↑		↑	↓		1.0 ml
Prolactin	↑					0.25 ml
Progesterone	↑		↑	↓		0.5 ml
Sex-hormone binding globulin	↓		↓			0.125 ml
Antioxidant vitamins (beta-carotene, other carotenoids, retinol, tocopherols, vitamin C)	↓	↓	↓	↓	↓	1.0 ml
Cholecalciferol	↓	↓	↓	↓		1.0 ml
Organochlorine residues	↑					1.0 ml
Genetic markers	↑ or ↓	↑ or ↓	↑ or ↓	↑ or ↓	↑ or ↓	
Lipids and lipoproteins (cholesterol, LDL, subtypes, HDL-2, HDL-3, VLDL, apolipoproteins)	↑ or ↓		↑ or ↓			0.5 ml
Fatty acids (poly-unsaturated and mono-unsaturated FA's)	↓	↓	↓			0.5 ml
Trans fatty acids			↑			0.5 ml
Marine oils (omega-3 FA's [EPA & DHA])	↓	↓	↓			0.5 ml
Lp(a) and isoforms			↑			0.5 ml
Oxidized LDL			↑			0.5 ml
Saturated FA's	↑	↑	↑		↑	0.5 ml
Homocysteine			↑			0.5 ml
Folate, vitamin B6, vitamin B12	↓	↓	↓			0.5 ml
Selenium, zinc, ubiquinol	↓	↓	↓	↓	↓	1.0 ml
Ferritin	↑	↑	↑		↑	0.5 ml
Calcium, magnesium	↓	↓	↓	↓	↓	0.5 ml
Fasting insulin level	↑	↑	↑	↓	↑	0.5 ml
C-peptide/pro-insulin			↑		↑	1.0 ml
Fibrinogen			↑			0.5 ml

Table 1-A5.3 (Continued)

Biomarkers	End points (continued)					Volume of Plasma/Serum Required
	Breast Cancer*	Colorectal Cancer	CHD/Stroke	Fractures	Diabetes	
Tissue plasminogen activator (TPA) and PAI-1			↑			0.5 ml
Factors II and VII			↑			0.5 ml
Anticardiolipin antibodies			↑			0.5 ml
Serum fructosamine			↑		↑	0.5 ml
Ceruloplasmin			↑			0.5 ml
C-reactive protein			↑			0.5 ml
Sialic acid			↑			0.5 ml
Chlamydia antibody titer			↑			0.5 ml
Herpes Simplex Virus Types 1 and 2 antibody			↑			0.5 ml
Cytomegalovirus antibody titer			↑			0.5 ml
Thyroid stimulating hormone (TSH)			↑ or ↓	↑		0.5 ml
Parathyroid hormone (PTH)				↑		0.2 ml
Bone-specific alkaline phosphatase (BsAP)				↑		0.2 ml
Osteocalcin				↑		0.2 ml
IGF - 1 IGF - BP3, and IGF II				↓		0.25 ml

The above hypotheses can also be tested for endometrial and ovarian cancer.

7.3 Data Analysis

Analyses of longer term intervention effects will employ the weighted (2-sided) log rank statistic as originally described (The Women’s Health Initiative Study Group, 1998). Such a statistic can be written

$$T = \sum w_i (O_i - E_i)$$

where w_i is the value of the weight function evaluated at the i^{th} largest time from randomization to clinical outcome event among women in both groups, O_i is one or zero depending on whether the outcome occurred in a woman in the treated group or not, and E_i is the conditional expected value of O_i . If V_i represents the conditional variance of O_i , then it follows that the variance (σ^2) of T is estimated by $\sigma^2 = \sum w_i^2 V_i$ and the test for differences between groups is then made by referring T^2/σ^2 to the 95th percentile of a chi-square distribution on one degree of freedom.

The weighting was intended to enhance test power under the expectation that intervention versus control disease incidence ratios increase in absolute value approximately linearly as a function of time since randomization. The weights w_i were chosen to equal time from randomization up to a disease-specific maximum (three years for cardiovascular disease and fracture occurrence, 10 years for cancer occurrence and total mortality) and to be constant thereafter. Because this assumption was supported in some instances in the hormone trials and not in others, both weighted and unweighted statistics will be used, with unweighted statistics as the default test statistics unless a prior evidence had suggested otherwise (e.g., for effects on cancer incidence).

To examine post-intervention effects, weighted and unweighted time to event analyses will be conducted, typically using date of the close-out visit (or date of official notification of study closure for the HT trials) as the “time zero” for these analyses. Weights for post-intervention analyses will be defined to account for changing exposure to the interventions, lag-time and carry-over effects.

Analyses of intervention effects will typically be stratified on baseline age (50-54, 55-59, 60-69, 70-79), and self-reported prevalent disease (if applicable) for that outcome, and the categories of the other interventions. The primary HT comparisons will be examined separately based on baseline WHI hysterectomy status.

To assess potential selection bias among Extension Study participants relative to the initial trial cohort, comparisons of demographics, health history, adherence to intervention and key outcome event rates will be made between Extension Study enrollees and non-enrollees using data from the initial WHI database. Methods to account for non-representative enrollment using probability weighted tests may be employed if there is evidence of noteworthy selection in Extension Study enrollment.

All analyses of clinical trial results will be reported as two sided tests with acknowledgement of multiple testing issues, either by appropriate adjustment of p-values and confidence intervals or by an acknowledgement of the number of tests performed.

More detailed explanatory analyses will include tests for group differences with concomitant adjustment for covariates, as well as explanatory analyses that examine the extent to which an intervention benefit can be explained by changes in intermediate variables and outcomes (e.g., nutritional and biochemical measurements). These analyses will be conducted using relative risk regression methods, with appropriate account of measurement error in the intermediate variable measurements, using data obtained in a reliability substudy. Nested case-control and case-cohort sampling procedures (see next subsection) will be used in most such analyses since stored materials used to determine intermediate variable values will not be routinely analyzed for the entire CT cohort.

Simple graphical displays and standard statistical methods will be used to present biochemical, bone density, and nutritional results by treatment group, clinic, and time since randomization during the course of the CT. Similar displays will describe the frequency and severity of adverse effects.

Observational Study

The ability to estimate relative risks reliably for the outcomes of interest in the OS as a function of baseline characteristics (exposures, behaviors or biologic measurements), or as a function of changes in such characteristics between baseline and three years is dependent on the accurate measurement of the characteristics (and outcomes) under study, and the accurate ascertainment and proper accommodation of all pertinent confounding factors. Even measurement error that is nondifferential in the sense that it is unrelated to disease risk given the 'true' characteristic values, can severely attenuate or otherwise distort relative risk estimates. Since many of the characteristics to be ascertained in the OS (e.g., nutrient intakes, blood cholesterol) are subject to noteworthy measurement error, a stratified 1% random subsample of the OS women had repeat baseline information and specimens obtained at between one and three months following their OS enrollment, and again at between one and three months following their three year clinic visit. This reliability subsample provides information of the reproducibility of the measurements taken (Langer et al, 2003), and can be used, under classical measurement error assumptions, to correct relative risk estimates for non-differential error in predictor and confounding variables. The 1% reliability sample was stratified on age, racial/ethnic group, and socioeconomic group. The size of the OS cohort, and the comprehensive set of measurements obtained allow a particularly thorough accommodation of confounding, by means of individual matching, stratification or regression modeling.

Relative risk regression methods (e.g., Cox, 1972) will also provide the primary data analytic tool for the OS. These methods, which can be thought of as an extension of classical person-year methods that avoids the assumption of constant disease risk for a study subject across the follow-up period, allow flexible modeling of the risks associated with the characteristics under study, as well as flexible accommodation of potential confounding factors, by means of stratification, matching, or regression modeling. Though less well developed they can also accommodate the types of reliability sample alluded to above (e.g., Pepe et al, 1989; Espeland et al, 1989; Lin et al, 1992), in order to produce 'deattenuated' relative risk estimates. Finally,

relative risk regression methods are also readily adapted to accommodate nested case-control (Liddell et al, 1977; Prentice and Breslow, 1978) and case-cohort (Prentice, 1986) sampling schemes.

Nested case-control sampling proceeds by selecting for each 'case' of a study outcome one or more 'control' women who have not developed the disease in question by the follow-up time at which the corresponding case was ascertained. Additional matching criteria in the OS will typically include baseline age, clinic, and date of enrollment, and depending on the analysis may also include racial/ethnic or socioeconomic group, or other factors. Nested case-control or case-cohort sampling provides the only practical approach to reducing the number of OS women whose blood specimens need be analyzed and processed, if the measurements of interest cannot be assumed to be stable over time. For example, certain of the antioxidant concentrations to be measured in blood specimens are known to substantially degrade over the course of a few months or years of storage, in which case the follow-up-time-matched aspect of the nested case-control approach is essential to valid relative risk estimation. For measurements that are stable over time, however, case-cohort sampling could provide an alternative that has some decided advantages. Case-cohort sampling involves the selection of a random, or a stratified random, sample of the cohort to serve as a comparison (control) group for the cases of all the outcomes under study.

Analyses that relate change in risk factors to disease risk have particular potential for gaining insight into disease mechanisms. For example, the OS provides a valuable forum for addressing the issue of whether or not the association between low blood cholesterol (e.g., <160 mg/dl) and excess non-cardiovascular mortality derives primarily from persons who have experienced major reductions in blood cholesterol over the preceding three years. In fact the OS is large enough that such analysis could be restricted to women with relatively low baseline blood cholesterol (e.g., lowest two quintiles) in order to avoid a complicated interpretation if the effect of interest happened to 'interact' with baseline cholesterol measurement.

Furthermore the OS, by virtue of ascertaining a range on non-specific markers of debility or disease (e.g., serum albumin, hemoglobin; cancer biomarkers; baseline and follow-up disease prevalence by questionnaire and physical exam) may be able to examine whether the excess mortality associated with reduced blood cholesterol can be explained by the presence of recognized or latent disease. The careful accommodation of measurement error in predictor and confounding variables is particularly important in such risk-factor-change analyses.

Appendix 3 of the original WHI protocol provides power calculations for OS analyses as a function of disease rate, exposure frequency, relative risk, follow-up duration and, importantly, as a function of subsample sizes corresponding to racial/ethnic, age, and other important OS subgroups.

Clinical Trial and Observational Study

Separate analyses in both the CT and OS will be conducted according to self-reported baseline prevalence of the clinical outcome being analyzed. In fact, whenever applicable, relative risk analyses based on randomized CT comparisons will be accompanied by corresponding OS relative risk analyses. The comparability of these analyses is enhanced by the common aspects of baseline data collection procedures and outcome determination procedures in the CT and OS. Estimated relative risk functions from the two sources will take suitable account of prior

"exposure" histories and of measurement error in exposure assessment. Under circumstances in which careful analyses of this type lead to substantial agreement between CT and OS results, analyses will be conducted to extrapolate the relative risk results beyond those examined in the CT, using the OS. For many observational analyses, joint analyses of the CT/OS cohorts with stratification on cohort will also be a useful strategy for examining possible explanations for differences between relative risks in the CT and OS.

Outcome Ascertainment Process

Section 8

Outcomes

Introduction

The Women's Health Initiative (WHI) Extension Study (ES) outcomes are diverse and complex. The aim of the WHI Extension Study is to continue to assess the relationship of particular interventions on a broad range of health and illness conditions in women. Primary, subsidiary, and intermediate outcomes have been identified as important for the study. To ensure that the identified outcomes represent true disease states, detailed outcomes ascertainment procedures and diagnostic criteria for adjudication have been developed by study investigators. The standardized outcome procedures detailed below help ensure that the outcomes are ascertained in an unbiased manner.

The WHI Extension Study outcomes ascertainment and adjudication procedures are by and large the same as those used for the main WHI program. Outcomes ascertainment procedures performed by Field Center (FC) staff include the identification, investigation, and documentation of potential outcomes, and adjudication procedures include the review of assembled case packets by Physician Adjudicators.

All WHI Clinical Trial (CT) participants were unblinded to their treatment assignment before the close of the main WHI study (October 1, 2004 – March 31, 2005). While this information is located in the FC chart documentation and is readily accessible, the treatment assignment information should **not** be made available to the Physician Adjudicator who is adjudicating the possible WHI Extension Study outcomes. This is to maintain continued objectivity and uniformity in the adjudication process and ensure unbiased adjudication of events.

8.1 Overview of Outcomes Process

The types of events collected in the WHI main program have been streamlined in the WHI Extension Study and outcomes ascertained through self-report alone has been expanded. Major outcomes of interest require full ascertainment and documentation supporting the event or procedure. See the list of outcomes requiring adjudication in *Table 8.1 – WHI Extension Study Outcomes*. Note that outcomes collected for HT (PE, DVT, and hysterectomy) will only be collected through 2007. Those outcomes identified by self-report alone (i.e., do **not** require investigation, documentation, or adjudication) are also included in the table under "Self-reported outcomes requiring adjudication for a hospitalization of 2 nights or more."

The entire process of ascertainment of an outcome plus the adjudication of a final diagnosis by the Physician Adjudicator should be completed within 3 months of initial identification of a possible outcome. The three-month interval begins with the completion of *Form 33 – Medical History Update* and ends with the adjudication of the event by completion of the appropriate outcomes form. See *Figure 8.1 – Outcomes Ascertainment and Adjudication Process* for a flow diagram of the entire process. Given the delays often inherent in obtaining records, it may at times not be possible to meet this 3-month deadline. However, all efforts should be made to obtain and process all documents as quickly as possible.

These sections of the WHI Extension Study Manual contain instructions and resources for FC physicians and staff to follow for each step of the outcomes and adjudication process.

- *Section 8.2 – Identification of Outcomes*, *Section 8.3 – Investigation of Outcomes*, and *Section 8.4 – Documentation of Outcomes* describe how to process the initial identification of an outcome, investigate and obtain the required documents for each outcome, assemble the documentation into an adjudication case packet, and forward the case packet with appropriate outcomes forms to the CCC for central adjudication. Note that other outcomes ascertained only by self-report are identified in *Table 8.1 – WHI Extension Study Outcomes*.
- *Section 8.5 – Fatal Events – Special Considerations* describes additional procedures and guidelines for follow-up of participant deaths, including contacts with participant families.
- *Section 8.6 – Physician Adjudication* describes the procedures Physician Adjudicators must follow in reviewing documents related to a possible WHI Extension Study outcome and assigning a WHI Extension Study-defined diagnosis.

- *Sections 8.6 to 8.11 – Fatal Events, Cardiovascular, Other, Fracture, and Cancer Adjudication* describe in detail how to complete the specific outcomes forms which assign specific diagnoses.
- *Appendix A – Field Center and Participant Forms:* Includes *Forms 33, 33D, 120, 125, and 134* as well as other forms completed by participants and FC staff.
- *Appendix B – Coding Reference, ICD 9-CM and ICD-10*
- *Appendix C – Explanation of Medical Terms:* medical terms used in outcomes documents.
- *Appendix D – Medications Used for Treatment of Cardiovascular Disease*
- *Appendix E – Model HIPAA Medical Release of Information*

8.1.1 Definitions Used for WHI Extension Study Outcomes

Definitions specific to WHI Extension Study outcomes and outcomes investigations are included below.

Adjudication: The assignment of the final decision/diagnosis by a Physician Adjudicator or Clinical Coordinating Center (CCC) Cancer Coder after reviewing the outcome documents contained in an adjudication case packet and recording the decision/diagnosis and details supporting the diagnosis on the outcomes forms.

Adjudication case packet: Materials relevant to a specific outcome case. Each case packet includes an *Investigation Documentation Summary (WHIX0988)*, *Members Outcomes Status Report (WHIX1215)*, relevant outcomes forms, and required medical record documents pertaining to the type of outcome(s) being adjudicated.

Ascertainment: The initial identification of a possible WHI Extension Study outcome, investigation of sources of supporting medical records, and documentation for an adjudication case.

Closed outcome case: A WHIX database function in which further ascertainment and/or adjudication procedures are stopped or concluded, either because a final diagnosis has been assigned or it has been determined that no WHI Extension Study outcome occurred. A closed outcome is recorded in the database via assignment of a “close date” in the WHIX Outcomes Management Subsystem.

Discovery: Review of medical records indicates a possible WHI Extension Study outcome or provider visit not self-reported by the participant on her *Form 33 – Medical History Update* or *Form 33D – Medical History Update (Detail)*. Investigation of the unreported outcome or provider visit is appropriate as they were located in medical records the Outcomes Coordinator (OC) is authorized to review. Also includes identification of a death through the Social Security Death Index or National Death Index (SSDI or NDI) and obituaries.

Documentation: The assembly of required supporting medical records (obtained through investigation of a possible outcome) into an adjudication case packet. Documentation also includes tracking these documents and packets through the WHIX database and/or manual tracking systems until the adjudication case is closed.

Emergency Room (ER) or Emergency Department (ED) visit: Visit or admission to a hospital ER/ED. This may or may not lead to a hospital admission. Several events (i.e., newly diagnosed hip fractures, cancers, PTCAs, strokes, and HT deep vein thrombosis [DVT], pulmonary embolism [PE] or hysterectomy) occurring or diagnosed solely at an ER visit (without subsequent hospitalization) will be investigated, documented, and adjudicated as possible outcomes. Also includes ER/ED documentation in all adjudication case packets when the ER visit results in a WHI ES defined outcome.

Five major cancers: The five primary WHI cancer outcomes sites: breast, colon, rectum, endometrium, and ovary.

Hospitalization: An overnight stay in an acute care hospital, for any reason. In the WHI Extension Study, there is no minimum length of stay required for specified outcomes of interest. Other selected outcomes are investigated only if the hospitalization is for 2 nights or more. (See *Table 8.1 – WHI Extension Study Outcomes* for the complete list of outcomes to investigate based on the hospitalization length of stay.) Short stays, observation stays, and day surgeries may be referred to in medical records as outpatient visits, but for the WHI ES these stays are considered hospitalizations if they result in overnight stays at an acute-care facility due to a complication or need for close observation. (Note that an overnight stay in a rehabilitation facility is **not** considered an overnight hospitalization.) Psychiatric admissions are also not investigated or

adjudicated in the WHI ES. Transfers from one hospital to another, on the same day, are considered one “case” for WHI ES purposes, and medical records are obtained from both facilities.

Identification: The routine procedures through which the FC learns of a possible outcome, which is typically through participant completion of an annual *Form 33 – Medical History Update* and subsequent *Form 33D – Medical History Update (Detail)* or in the event of a participant’s death, through some other interim report to FC staff by the participant’s proxy (family, friend or health care provider). The initial notification of a participant’s death may also come from other sources (e.g., CCC returned mail, newspaper obituaries, National Death Index reports).

Investigation: The process of locating provider (e.g., hospitals, clinics, physicians) information about a possible outcome, requesting medical records that may support its diagnosis, and filing such documents in a participant’s outcomes file.

Medical History Update Forms: *Form 33 – Medical History Update* is a self-administered form (routinely mailed by the CCC to the participant) annually. *Form 33* collects information on those outcomes that do not require further ascertainment procedures, as well as screens for those participants who have had a major clinical event. *Form 33D – Medical History Update (Detail)* is required from those participants who indicate on *Form 33* that they have had a major clinical event that may require adjudication. *Form 33D*, collected by FC staff by phone or mail, is used to obtain more detailed information to assist the OC with outcomes ascertainment.

Outcomes file: A participant’s file of outcomes-related documents. This file may include medical records documents that are not currently required for a pending adjudication case packet, as well as copies of pending and closed adjudication case packets. There is no required organization for the WHI ES chart. Instead the CCC recommends the following be included in the charts: *Form 33 – Medical History Update*, *Form 33D – Medical History Update (Detail)*, *Form 85 – Mammogram* with accompanying documentation attached, Personal Information Updates (PIU), Consents, and Release of Information (ROI). The Personal Information Updates (PIUs) from the WHI chart may be included in the outcomes chart. It may also be helpful to keep the *Form 85s* and chart/progress notes from WHI with the chart. The original WHI outcomes charts need to be accessible during the WHI Extension Study, but it is not necessary for immediate or frequent retrieval.

Outcomes forms: *Forms 120-132*, are completed by the FC Outcome Coordinator (OC), Physician Adjudicator, or CCC resource. Forms completed by FC staff and participants are located in *Appendix A* and outcomes forms are located in *Sections 8.6 – 8.11*.

Outpatient visits: Any short stay, observation stay, clinic visit, or day surgery that does not involve an overnight stay. Only certain events (e.g., newly diagnosed stroke, hip fractures, cancers, cardiac revascularization procedures, and in the HT, DVT and hysterectomy) occurring at an outpatient visit alone without hospitalization will be investigated, documented, and adjudicated as possible outcomes. If the selected outpatient visit results in an overnight hospital stay, collect and include the outpatient documentation in the adjudication case packet. See *Table 8.1 – WHI Extension Study Outcomes* for a complete list of outpatient visits requiring investigation.

WHIX: The WHI Extension Study database that assists with the collection and tracking of outcome cases through the ascertainment and adjudication process. The review of the participant’s outcomes chart should not be replaced by the sole use of the WHIX tracking system.

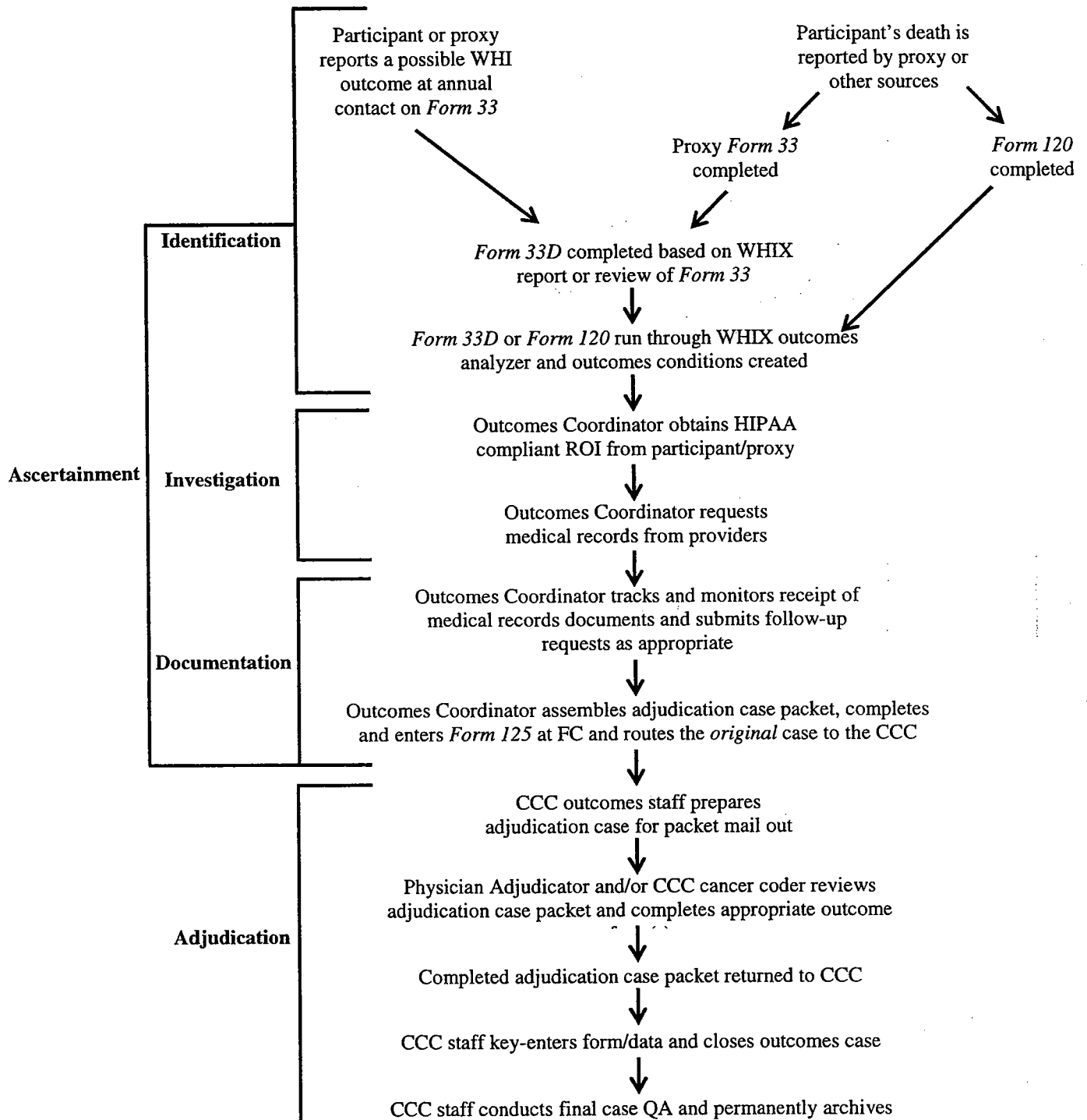
Table 8.1
WHI Extension Study Outcomes

As identified on *Form 33*, *Form 33D*, and *Form 120*

Outcomes Requiring Adjudication	Investigation and Adjudication NOT Required
<ul style="list-style-type: none"> • Coronary heart disease & other cardiovascular disease* <i>Form 121</i> <u>Hospitalized one or more nights:</u> Acute myocardial infarction (MI) Coronary artery bypass graft (CABG) Peripheral arterial disease, symptomatic and/or requiring a procedure Carotid artery disease requiring a procedure or surgery <u>Hospitalization not required:</u> Coronary death Coronary revascularization (PTCA, coronary stent, laser) • Stroke* (hospitalization not required) <i>Form 132</i> • Venous thromboembolic disease* – <i>Form 126</i> (HT only) <u>Hospitalized one or more nights:</u> Pulmonary embolism (PE) <u>Hospitalization not required:</u> Deep venous thrombosis (DVT) • Five major cancers* – <i>Form 130</i> <u>Hospitalization not required:</u> Breast Colon Endometrium Rectal Ovary Other Cancers* (excludes non-melanoma skin cancer) • Hip and Upper Leg Fractures* – <i>Form 123</i> <u>Hospitalization not required</u> • All deaths* – <i>Form 120, 124</i> Out of hospital death: Adjudicate death with last relevant hospitalization (if available). • Hysterectomy* – <i>Form 131</i> (HT only) <u>Hospitalization not required:</u> • Any hospital stay of 2 nights or more except those solely for certain procedures – <i>Form 125</i> 	<ul style="list-style-type: none"> • Selected hospitalized procedures requiring no follow-up (no required outcomes forms): Appendectomy Bunionectomy Carpal tunnel repair/release Cholecystectomy Club foot release COPD exacerbation Corneal transplant Cosmetic/plastic surgery, other than breast Extracapsular cataract extraction (EEC) Fractures, other than hip and upper leg Glaucoma Hemorrhoidectomy Inguinal herniorrhaphy Knee arthroscopy Laceration repair Laminectomy (see spinal disorders below) Ligation and stripping, vascular (varicose vein strip) Out of country overnight hospitalization for gastrointestinal (GI) symptoms related to travel. (Requires PI signature.) Overnight hospitalization < 2 nights (excludes extension outcomes of interest) Overnight hospitalization for: - Any research study (that does not involve a WHI outcome) - Sleep studies (not related to a research study) Pelvic floor surgeries (for stress urinary incontinence, vaginal, uterine or rectal prolapse) Psychiatric admission Rhinoplasty / septoplasty / septorhinoplasty Rehabilitation facility admissions Rotator cuff repair Scleral buckle Skin disorders and procedures (includes non-melanoma and excludes melanoma) Spinal disorders/procedures: For example, spinal stenosis, spondylolisthesis, degenerative disc disease, spinal fusion, facetectomy Stapedectomy Synovectomy of wrist Tonsillectomy & adenoidectomy (T & A) Total joint replacement (knee, hip or shoulder) Turbinectomy Tympanostomy tube Upper gastrointestinal (GI) endoscopy Vitrectomy • Recurrence of selected outcomes (associated hospitalizations must still be adjudicated; see <i>Table 8.3 – Subsequent Conditions</i>)
<p><u>Self-reported outcomes requiring adjudication for a hospitalization of 2 nights or more.</u> <i>Form 125</i></p>	
<ul style="list-style-type: none"> • Self-report events on <i>Form 33</i> Diabetes mellitus requiring therapy Other age-related outcomes: inflammatory arthritis macular degeneration moderate or severe memory problems (dementia, Alzheimer's) Benign breast disease Colorectal polyps Venous thromboembolic disease (non HT) Congestive heart failure Angina pectoris (chest pain) TIA Parkinson's disease Systemic lupus erythematosus (lupus) 	

* Complete *Form 125* if hospitalized one or more nights.

Figure 8.1
Outcomes Ascertainment and Adjudication Process



8.1.2 Field Center Outcomes Staff

Each FC will identify an Outcomes Coordinator. This person is responsible for overseeing the activities of the outcomes team and the process of outcomes ascertainment, including:

- Identifying medical events and having working knowledge of outcomes procedures.
- Collecting *Form 33D* from participant.
- Requesting medical records documentation from providers.
- Ongoing tracking of documents.
- Final assembling into adjudication case packets.
- Forwarding the case packets to the CCC.

The Outcomes Coordinator (OC) is the key FC person involved in outcomes ascertainment, but other WHI Extension Study staff may assist in this effort. The OC contacts participants by phone or mail to obtain detailed self-report information about potential WHI Extension Study outcomes and thereby initiates the ascertainment process with the identification of potential outcomes. Investigation commences when the OC requests medical records documentation from the healthcare provider and prepares the documentation for the Physician Adjudicator. The OC is responsible for performing data entry, generating reports, conducting interviews to elaborate self-report data, requesting documents, and preparing and tracking case packets for adjudication.

To ensure unbiased ascertainment of outcomes, it is **recommended** that FC staff involved in outcomes ascertainment **not** be exposed to information through participant contacts or reports that is effectively or definitively unblinding (i.e., information that, respectively, allows “educated guesses” or provides “proof” of treatment arm.). However, each FC will determine, based on local resources and operations, the extent to which these recommendations can be followed.

8.1.3 Physician Adjudicator

The Physician Adjudicator is responsible for review of assembled adjudication case packets and assigning the appropriate outcome diagnosis based on WHI Extension Study defined criteria. It is **strongly recommended** that WHI Extension Study Physician Adjudicators **not** be exposed to information through participant contacts or reports that is effectively or definitively unblinding (i.e., information that, respectively, allows educated guesses or provides “proof” of treatment arm). Thus, Physician Adjudicators should not have contact with participants or participant files (except appropriate adjudication case packets) to ensure unbiased adjudication. See *Section 8.6 – Physician Adjudication* for more information on the Physician Adjudicator’s roles and responsibilities.

An outcome case is assigned to committees based on outcome type following a single-adjudicator review model. The four adjudication Committees include:

- **Cardiovascular Disease (CVD)/Death:** The CVD Committee is responsible for adjudicating myocardial infarction, CABG, coronary revascularization, peripheral arterial disease, carotid artery disease, and venous thromboembolic disease (HT only through 2007). The Committee will also adjudicate all deaths, selected hospitalization stays of two nights or more, and hysterectomies (HT only through 2007). They complete *Form 121 – Report of Cardiovascular Outcome*, *Form 124 – Final Report of Death*, and *Form 126 – Report of Hysterectomy (HT)* as needed, and review *Form 125 – Summary of Hospitalization Diagnosis* as requested by CCC outcomes staff. See *Sections 8.7 – 8.9* for details of completing the forms.
- **Stroke:** A group of neurologists who adjudicate all strokes, completing *Form 132 – Report of Stroke Outcome* (see *Section 8.8 – Cardiovascular Outcomes*).
- **Fracture:** Staff at University of California, San Francisco (UCSF), adjudicate all hip fractures, completing *Form 123 – Report of Fracture Outcome* (see *Section 8.10 – Fracture Outcomes*).
- **Cancer:** The CCC cancer coders adjudicate the five primary sites (breast, ovary, endometrium, colon, and rectum), completing *Form 130 – Report of Cancer Outcome* (see *Section 8.11 – Cancer Outcomes*) using SEER (Surveillance, Epidemiology, and End Results) guidelines. Cancer cases for which the CCC

staff cannot assign a final diagnosis will be forwarded to the CCC consulting pathologist for coding and adjudication. The CCC cancer coders also adjudicate all “other cancers” by completing a subset of the questions of *Form 130*.

Adjudication case packets are typically distributed to one of four central adjudication committees based on the participant’s self-report. In the event that a case has more than one outcome included (or discovered) in the documentation, the case may be routed to more than one committee.

Physician Adjudicators will primarily adjudicate by mail, with cases being routed from and returned to the CCC. The exception is cancer coding, which is conducted at the CCC.

8.1.4 Outcomes Adjudication Committee (OAC)

The Outcomes Adjudication Committee (OAC), formerly called the Morbidity and Mortality Committee (M&M) in WHI, is an Advisory Committee whose role is to review protocol, policy, and procedures as they relate to outcomes and adjudication, and make recommendation to the Extension Study Executive Committee (ESEC). The OAC is comprised of Physician Adjudicators from FCs, other WHI Extension Study investigators, an OC FC representative, and appropriate CCC staff. Adjudicators and staff are assigned to central adjudication subcommittees based on their professional expertise.

8.2 Identification of Outcomes

Field Centers (FCs) may become aware of potential outcomes through different mechanisms:

- Routine annual *Form 33 – Medical History Update* and/or *Form 33D – Medical History Update (Detail)*.
- Death reported by proxy (e.g., family, friend, health care provider) or other source (e.g., newspaper obituary, returned mail to the CCC, National Death Index report).

Note that even if a participant reports a primary outcome, she will continue to be followed for the duration of the study for other WHI Extension Study outcomes.

8.2.1 Outcomes to be Identified

8.2.1.1 Outcomes Requiring Full Adjudication

Outcomes to be identified and forwarded for adjudication are listed in *Table 8.1 – WHI Extension Study Outcomes*, under “Outcomes Requiring Adjudication”. In general, only the first occurrence of a particular outcome is adjudicated. There are however some outcomes that require ongoing investigation and adjudication. See *Section 8.3.2 – First vs. Recurrent Events* for more detailed information.

8.2.1.2 Outcomes Identified Only by Self-Report on *Form 33/33D – Medical History Update (Detail)*

Specific outcomes are identified by the participant’s self-report alone on *Form 33 – Medical History Update* or *Form 33D – Medical History Update (Detail)*. See the list of outcomes under the heading “Self-Reported outcomes requiring adjudication for a hospitalization of 2 nights or more” in *Table 8.1 – WHI Extension Study Outcomes*. These self-reported outcomes do not require investigation, documentation, or adjudication unless the outcome is associated with a hospital stay of 2 nights or more.

8.2.1.3 Hospitalizations Due Solely to Selected Conditions or Elective Procedures

Selected outcome diagnoses and elective procedures do not require investigation, documentation, or adjudication. See the list in *Table 8.1 – WHI Extension Study Outcomes* in the column labeled “Investigation and Adjudication NOT Required.” Do not complete *Form 125 – Summary of Hospitalization Diagnosis* if the participant reports these events or procedures as the only reason/event during the hospitalization, even if the hospital stay is 2 nights or more. In the WHIX outcomes subsystem adjudication screen, enter Closure Code 10 – *Extension case, not adjudicated, not forwarded to the Clinical Coordinating Center (CCC)*. (See *Section 8.4.3 – WHIX Outcomes Closure Codes* for more details.)

8.2.2 Routine Administration of *Form 33 – Medical History Update*

Potential outcomes will primarily be identified through the routine administration of *Form 33 – Medical History Update* and, if needed, *Form 33D – Medical History Update (Detail)*. *Form 33* collects information on those outcomes that do not require further ascertainment procedures (outcomes by self-report alone), as well as screens for those participants who have had a medical problem, event, or procedure that may require adjudication.

CCC mailing of Form 33: Participants typically complete *Form 33* as a self-administered form, although FCs may choose to administer it as an interview if the participant is unable or unwilling to complete and mail in the form, or if the participant has difficulty understanding or completing forms. At each annual contact date, the CCC will mail a *Form 33* to the participant to be completed and returned to the CCC for scanning. The CCC is responsible for mailing the *Form 33*s to all WHI Extension Study participants as part of their annual contact (see *Section 7 – Follow-Up Contacts*).

CCC repeat mailings: Following the CCC mailing, if the *Form 33* is not returned within three months of the first mailing, the CCC will send it again. If the form is not returned within two months of the second mailing, the CCC will send it a third time. If the form is still not returned, the FC becomes responsible for collecting the missing *Form 33*.

FC Follow-up: The FC is also responsible for collecting any additional information from the participant to resolve questions or missing data identified when the CCC scans the returned *Form 33* (see *Section 8.2.8 - Forms Processing Reports* for more details). For incapacitated or deceased participants, a participant's proxy (e.g., family, friend, or health care provider) may complete a *Form 33* (see *Section 8.5 – Fatal Events – Special Considerations*).

8.2.3 Routine Administration of *Form 33D - Medical History Update (Detail)*

When a participant reports an outcome of interest or a hospital stay of 2 nights or more on *Form 33*, FCs follow-up by asking her to complete *Form 33D*, which collects more specific information about the potential outcomes. *Form 33D* asks participants to provide names and addresses of hospitals, outpatient clinics, and physician offices where possible outcomes were diagnosed or treated. *Form 33D* also asks participants to provide more detailed information regarding cardiovascular and stroke diagnoses, incident cancer, causes of hip fractures, venous thromboembolic disease (PE, DVT) and hysterectomy operations (HT only through 2007), and revascularization procedures.

Identify participants needing a *Form 33D*: Following the scanning of *Form 33 – Medical History Update*, the FC can run *WHIX0622 – Members with Potential Outcomes Report* to identify those participants who need to complete *Form 33D – Medical History Update (Detail)*. Based on WHI experience, an estimated 10% of the completed *Form 33s* will need a *Form 33D*. As the study population ages, the number of participants needing a *Form 33D* will likely increase. Refer to the *Form 33* form instructions (in *Appendix A*) for the algorithm that indicates, based on the participant's form responses, who needs to complete a *Form 33D*.

Administer *Form 33D*: FCs will probably find that administration of *Form 33D* by interview gathers more complete data for proceeding with a timely outcomes investigation. However, depending on the FC staffing levels it may be more time efficient to mail *Form 33Ds* to participants and follow up with information errors as they arise. FCs are advised to obtain new, signed medical release forms when *Form 33D* is collected.

Additional hospitalizations: If the participant indicates more hospitalizations/provider visits than are allotted on the *Form 33D*, the participant is instructed to write the details for the additional hospitalizations on the last page of the form. The OC then manually creates and links the additional visits indicated on the form and investigates the possible outcomes as appropriate (see *Section 10 – Data Management* documentation for instructions on manually creating and linking conditions).

Statistical Power/Data Analysis

-A3.2 Observational Study

There are a number of factors to be considered in describing the power of the OS to elucidate relationships between baseline measurements and subsequent disease risk, as well as relationships between changes in measurements from baseline and three years and subsequent disease risk. These include:

(i) Incidence rates for diseases of interest - as described in *Section 1* of the Protocol and in the earlier part of this Appendix, incidence rates are quite variable for the diseases of interest in the Women's Health Initiative (WHI). For example, the annual incidence rates for some key outcome categories, assuming that 10%, 20%, 45% and 25% of OS enrollees are in the age categories 50-54, 55-59, 60-69 and 70-79, respectively, are approximately 5.0 for CHD, 3.0 for breast cancer, 1.8 for colorectal cancer, and 4.0 for hip fractures, per 1,000 enrollees. Naturally, it will be desirable to use the OS for studies of less common outcomes, including specific cancers (e.g., endometrial, ovarian), selected vascular diseases (e.g., hemorrhagic stroke, deep vein thrombosis), and fractures at specific, less common sites. The annual incidence rates for such diseases may be less than 1.0, or even less than 0.5 per thousand. Hence, generic power calculations have been conducted for annual incidence rates of 0.1, 0.5, 1.0, 2.0 and 5.0 per thousand.

(ii) Follow-up durations - it is particularly important that the OS begin to generate research reports as early as possible during the course of the WHI program. Hence, power calculations have been performed for average cohort follow-up durations of 3, 6 and 9 years. The three-year power calculations, for example, can be applied to studies of baseline characteristics when the average follow-up time for the OS (or a subset thereof) is three years, or to the study of changes in characteristics between baseline and three years when the average follow-up time is six years, since outcomes prior to a participant's three-year visit do not contribute to these latter analyses.

(iii) Sample size and subset analyses - power calculations based on the entire intended OS sample size of 100,000 are perhaps of most interest, but there is also considerable interest in analyses based on various OS subsets. For example, separate analyses for each decade of baseline age would require power calculations for cohorts in the range of 25,000 to 45,000 subjects in view of the anticipated OS age distribution mentioned above. Similarly, the anticipated OS enrollment by racial/ethnic subgroup is as follows: non-Hispanic, white - 80,000; African American - 10,000; Hispanic - 6,000; Native American - 2,000; Asian Pacific Islander - 2,000. Other analyses may be restricted to OS women for whom a certain measurement falls within selected percentiles relative to the overall OS distribution. For example, an important goal of the OS pertains to further elucidation of the relationship between a low-blood cholesterol or a recent reduction in blood cholesterol and subsequent mortality. Analyses restricted to the approximately 40,000 women with baseline blood cholesterol in the lowest two quintiles may provide particular insights. For example, one will be able to compare the mortality rates of women with blood cholesterol measurements in the lowest quintile at both baseline and three years, to those whose cholesterol has dropped from the second lowest to the lowest quintile between baseline and their three-year visit.

Power calculations were conducted for sample sizes of 100,000; 80,000; 40,000; 20,000; 10,000; 6,000 and 2,000 in order to explore the relationship between power and subset sample size.

(iv) Distribution of exposures or characteristics - the characteristics or exposures to be related to disease risk may involve a variety of types of measurements, including binary, categorical and continuous variates, and mixtures thereof. However, most analyses, especially exploratory analyses, will involve the comparison of disease risks between two groups of OS members distinguished by their values of one or more characteristics. For example, one may compare current ERT users to non-users; or may compare women in the highest quintile of baseline blood cholesterol, or baseline dietary fat intake, to corresponding women in the lowest quintile. Hence, power calculations were conducted as a function of the frequency of a binary characteristic or exposure, with 'exposure' frequencies taking values of 0.5%, 1%, 10%, 30% and 50%. For example, to obtain the power of a comparison of the highest quintile to lowest quintile of blood cholesterol in the entire OS cohort one can examine the following tables for a sample size of 40,000 (the highest and lowest quintiles combined) with an exposure frequency of 50% (one-half of the 40,000 women will be in the highest quintile).

(v) Odds ratio - there are a range of odds ratio values that may be pertinent to associations of interest in the OS. Odds ratios of 2.0 or above may have particular public health importance, particularly if the characteristic under study is fairly common. Note that odds ratios and relative risks are virtually identical for the range of

Table 1-A3.1. provides power calculations for analyses based on the entire cohort of size 100,000. For example, from the lower section of *Table 1-A3.1.* one can see that the power for detecting a relative risk of 1.5 associated with a characteristic present in 50% of the cohort is 72% after an average three years of follow-up, and 95% after an average of six years of follow-up, even for a disease with annual disease incidence of .05% per year, which is close to that for cancers of the endometrium and ovary, for example. An odds ratio of about 1.5 for above versus below the median fat intake can be projected from international correlation analyses for endometrial and ovarian cancer, after accounting for regression dilution. Similarly, an odds ratio of 2.0 associated with a characteristic arising in only 1% of the cohort can be detected with adequate power for diseases as common as breast cancer or hip fractures, and can be detected with power 83% after an average of only three years of follow-up for a disease such as CHD having an annual incidence of about .5% per year or greater.

Table 1-A3.2. presents corresponding analyses for a subsample of the OS of size 80,000. As such, it gives projected power for OS analyses restricted to non-Hispanic white women or for analyses on the entire 100,000 women based on a case-control analysis with four controls per case. Note that the power reductions in moving from *Table 1-A3.1.* to *Table 1-A3.2.* tend to be fairly modest. Consider two specific associations which could be examined in the OS: About 5-10% of postmenopausal women have serum ferritin concentrations about 200 µg/liter. A study in Finnish men indicates that such elevated concentrations may convey an odds ratio of about 2.2 for CHD. *Table 1-A3.2.* indicates that a 1:4 matched case-control study in the OS cohort would have power in the vicinity of 90% for detecting an elevated serum ferritin and CHD association, even if the odds ratio is as small as 1.25. As a second example, suppose that a particular occupational group, such as a lab technician or hair dresser, constitutes only .5% of the OS cohort. *Table 1-A3.2.* indicates that a 1:4 matched case-control study based on the OS would have power of at least 76% by an average six years of follow-up, or 94% by an average of nine years of follow-up, for detecting an odds ratio of 3.0 for a disease such as breast cancer with an annual incidence rate of two per 1,000 or greater. In fact, a British Columbia study suggests a breast cancer odds ratio of about four for these occupational groups.

Table 1-A3.3. shows corresponding power calculations for a subsample of size 40,000, as corresponds, for example, to studies restricted to extreme quintiles of a measured characteristic. A relative risk as small as 1.50 between extreme quintiles of a nutrient intake variable, for example, will be able to be detected with power 90% or greater by an average of three years of follow-up for diseases such as breast cancer, hip fractures or CHD having an annual incidence of at least .2%. Such an odds ratio can be detected with a power of 80% for a much rarer disease with incidence of .05% per year, by an average of nine years of follow-up. *Table 1-A3.4.* gives corresponding power calculations for a subsample of size 20,000. These entries are pertinent to full-cohort analyses restricted to the subset of women in the age range 70-79 at baseline, and to subsamples of size 40,000 under 1:1 matched case-control sampling.

Table 1-A3.5. gives power calculations for a subsample of size 10,000 - the anticipated number of African Americans in the OS. Note that there will be adequate power to detect an odds ratio of 1.50 or larger for diseases of annual incidence of .2% or larger, provided the characteristics or exposure arises in about half of the women in the subsample. *Table 1-A3.6.* gives power calculations for a subsample of size 6,000 - the anticipated number of Hispanic American women in the OS. There is adequate power to detect an odds ratio of 1.75 or larger for diseases of annual incidence of .2% per year or larger, again provided the characteristic arises in about 50% of the subsample. Finally, *Table 1-A3.7.* gives power calculations for a subsample of size 2,000 - the anticipated number of Native American, and of Asian and Pacific Islander American women in the OS. Odds ratios of 3.0 will be able to be detected for diseases having annual incidence of about .2% per year or greater, provided the characteristic under study arises in about 50% of the subsample.

In considering the range of odds ratios pertinent to the OS, it is important to consider the regression attenuation that arises from random measurement error in the assessment of characteristics of interest. For example, the slope of the regression line that relates the log-disease incidence (e.g., log-CHD incidence) to a single blood cholesterol measurement are attenuated by a factor of about 2/3 on the basis of such random measurement error, so that an odds ratio of 2 is reduced to $\exp((2/3)\log 2) = 1.59$ by (non-differential) measurement error. The corresponding attenuation factor for estimates of nutrient intakes based on a food frequency instrument may be in the vicinity of 1/3 depending upon the nutrient and assessment instrument, so that an odds ratio of 2 is attenuated to about 1.26 based on random measurement error for such exposures. Hence, to explore the power of the OS under various configurations of association strength and regression dilution, power calculations have been conducted for odds ratios of 1.25, 1.50, 1.75, 2.0 and 3.0.

(vi) Sampling procedures, and confounding factor control - the power calculations that follow assume the characteristic or exposure under study to be available on all pertinent study subjects, and uses the asymptotic distribution of a simple odds ratio statistic. However, many of the OS analyses will use time-matched case-control, or stratified case-cohort, sampling to reduce the number of women for whom expensive analysis of stored specimens or complicated questionnaires must be carried out. The efficiency of a time-matched case-control analysis as compared to a full cohort analysis is approximately $k(k+1)^{-1}$, where k is the number of controls matched to each case. Hence, a one-to- k matched case-control study based on a cohort of size n has power approximately equal to a full-cohort analyses based on a sample of size $nk(k+1)^{-1}$.

The following array can be used to approximately convert full-cohort sample size to corresponding 1:k matched case-control effective sample size for $k = 1, 2, 3, 5$.

Effective Cohort Sizes for 1:k Matched Case-Control Analysis

Controls (k) per case	Full Cohort Sample Sizes						
	100,000	80,000	40,000	20,000	10,000	6,000	2,000
1	50,000	40,000	20,000	10,000	5,000	3,000	1,000
2	66,667	53,333	26,667	13,333	6,667	4,000	1,333
3	75,000	60,000	30,000	15,000	7,500	4,500	1,500
4	80,000	64,000	32,000	16,000	8,000	4,800	1,600
5	83,333	66,667	33,333	16,667	8,333	5,000	1,667

Most OS analyses will also make provision, via stratification, matching or regression modeling, for factors that have potential to confound the association under study. Such control is essential to accurate odds ratio, or relative risk estimation, and corresponding more complex tests will tend to have reduced power, relative to the corresponding test in which confounding control is unnecessary. However, the power reduction is likely to be quite minor in most OS analyses so that no provision for confounding control is included in the OS power calculations.

The following tables present the power calculations for the configurations listed above, with the exception that combinations of factors for which the power is less than 50% are omitted for brevity.

Data Analysis

Observational Study

The ability to estimate relative risks for the outcomes of interest reliably in the OS as a function of baseline characteristics (exposures, behaviors or biologic measurements), or as a function of changes in such characteristics between baseline and three years is dependent on the accurate measurement of the characteristics (and outcomes) under study, and the accurate ascertainment and proper accommodation of all pertinent confounding factors. Even measurement error that is nondifferential in the sense that it is unrelated to disease risk given the 'true' characteristic values, can severely attenuate or otherwise distort relative risk estimates. Since many of the characteristics to be ascertained in the OS (e.g., nutrient intakes, blood cholesterol) are subject to noteworthy measurement error, a stratified 1% random subsample of the OS women will have repeat baseline information and specimens obtained at between one and three months following their OS enrollment, and again at between one and three months following their three year clinic visit. This reliability subsample will provide information of the reproducibility of the measurements taken, and can be used, under classical measurement error assumptions, to correct relative risk estimates for non-differential error in predictor and confounding variables. The 1% reliability sample will be stratified on age, racial/ethnic group, and socioeconomic group. The size of the OS cohort, and the comprehensive set of measurements to be obtained will allow a particularly thorough accommodation of confounding, by means of individual matching, stratification or regression modeling.

Relative risk regression methods (e.g., Cox, 1972) will also provide the primary data analytic tool for the OS. These methods, which can be thought of as an extension of classical person-year methods that avoids the assumption of constant disease risk for a study subject across the follow-up period, allow flexible modeling of the risks associated with the characteristics under study, as well as flexible accommodation of potential confounding factors, by means of stratification, matching, or regression modeling. Though less well developed they can also accommodate the types of reliability sample alluded to above (e.g., Pepe et al., 1989; Espeland et al., 1989; Lin et al., 1992), in order to produce 'deattenuated' relative risk estimates. Finally, relative risk regression methods are also readily adapted to accommodate nested case-control (Liddell et al., 1977; Prentice and Breslow, 1978) and case-cohort (Prentice, 1986) sampling schemes.

Nested case-control sampling proceeds by selecting for each 'case' of a study outcome one or more 'control' women who have not developed the disease in question by the follow-up time at which the corresponding case was ascertained. Additional matching criteria in the OS will typically include baseline age, clinic, and date of enrollment, and depending on the analysis may also include racial/ethnic or socioeconomic group, or other factors. Nested case-control sampling provides the only practical approach to reducing the number of OS women whose blood specimens need be analyzed and processed, if the measurements of interest cannot be assumed to be stable over time. For example, certain of the antioxidant concentrations to be measured in blood specimens are known to substantially degrade over the course of a few months or years of storage, in which case the follow-up-time-matched aspect of the nested case-control approach is essential to valid relative risk estimation. For measurements that are stable over time, however, case-cohort sampling could provide an alternative that has some decided advantages. Case-cohort sampling involves the selection of a random, or a stratified random, sample of the cohort to serve as a comparison (control) group for the cases of all the outcomes under study.

Analyses that relate change in risk factors to disease risk have particular potential for gaining insight into disease mechanisms. For example, the OS will provide a valuable forum for addressing the issue of whether or not the association between low blood cholesterol (e.g., <160 mg/dl) and excess non-cardiovascular mortality derives primarily from persons who have experienced major reductions in blood cholesterol over the preceding three years. In fact the OS is large enough that such analysis could be restricted to women with relatively low baseline blood cholesterol (e.g., lowest two quintiles) in order to avoid a complicated interpretation if the effect of interest happened to 'interact' with baseline cholesterol

measurement. Furthermore the OS, by virtue of ascertaining a range on non-specific markers of debility or disease (e.g., serum albumin, hemoglobin; cancer biomarkers; baseline and follow-up disease prevalence by questionnaire and physical exam) may be able to examine whether the excess mortality associated with reduced blood cholesterol can be explained by the presence of recognized or latent disease. The careful accommodation of measurement error in predictor and confounding variables is particularly important in such risk-factor-change analyses.

Clinical Trial and Observational Study

Separate analyses in both the CT and OS will be conducted according to self-reported baseline prevalence of the clinical outcome being analyzed. In fact, whenever applicable, relative risk analyses based on randomized CT comparisons will be accompanied by corresponding OS relative risk analyses. The comparability of these analyses is enhanced by the common aspects of baseline data collection procedures and outcome determination procedures in the CT and OS. Estimated relative risk functions from the two sources will take suitable account of prior "exposure" histories and of measurement error in exposure assessment. As indicated earlier (3.2.) under circumstances in which careful analyses of this type lead to substantial agreement between CT and OS results, it may often be reasonable to extrapolate the relative risk results beyond those examined in the CT, using the OS.

WOMEN'S HEALTH INITIATIVE PRINCIPAL INVESTIGATORS

WHI - Clinical Coordinating Center

Ross Prentice, Ph.D.
Fred Hutchinson Cancer Research Center
Clinical Coordinating Center
1100 Fairview Avenue, N., M3-A410
P.O. Box 19024
Seattle, WA 98109-1024

WHI - Clinical Centers

Shirley Beresford, AA, Ph.D.
Seattle Clinical Center
Fred Hutchinson Cancer Research Center
1100 Fairview Avenue, N., MD-B141
P.O. Box 19024
Seattle, WA 98109-1024

Robert Brunner, Ph.D.
University of Nevada
School of Medicine
Pennington Medical Bldg, MS145
Reno, NV 89557-0273

Robert Brzyski, M.D., Ph.D.
University of Texas Health Science Center
7703 Floyd Curl Drive, MSC 7831
San Antonio, TX 78229-3900

Bette Caan, Dr.PH
Kaiser Division of Research
3505 Broadway, 9th Floor
Oakland, CA 94611-5714

Rowan Chlebowski, M.D., Ph.D.
University of California, Torrance
La BioMed at Harbor – UCLA Medical Center
Division of Medicine Oncology/Hematology
1124 W. Carson Street, Building J-3
Torrance, CA 90502-2064

David Curb, M.D.
University of Hawaii
405 N. Kuakini Street, Suite 1011
Honolulu, HI 96817

Charles Eaton, M.D.
The Memorial Hospital of Rhode Island
111 Brewster Street
Pawtucket, RI 02860

Margery Gass, M.D.
University of Cincinnati
WHI Holmes Building, Room 4008
P. O. Box 670459
Cincinnati, OH 45267-0459

Gerardo Heiss, M.D., DrPh
University of North Carolina, Chapel Hill
Department of Epidemiology
Bank of America Center, Suite 306-E
137 East Franklin Street
Chapel Hill, NC 27514

Barbara Howard, Ph.D.
MedStar Research Institute
650 Pennsylvania Avenue, SE, Suite 50
Washington, DC 20003

Allan Hubbell, M.D.
University of California, Irvine
2230 W. Chapman Avenue, Suite 222
Orange, CA 92868

Rebecca Jackson, M.D.
Ohio State University
198 McCampbell Hall
1581 Dodd Drive
Columbus, OH 43210

Karen Johnson, M.D., M.P.H.
University of Tennessee, Memphis
Department of Preventive Medicine
66 N. Pauline, Suite 501
Memphis, TN 38105

Jane Morley Kotchen, M.D., M.P.H.
Medical College of Wisconsin
Division of Epidemiology
8701 Watertown Plank Road
Milwaukee, WI 53226

Lewis Kuller, M.D., Dr.PH
University of Pittsburgh
Bellefield Professional Building
130 N. Bellefield Avenue, 4th Floor
Pittsburgh, PA 15213

Andrea LaCroix, Ph.D.
LaJolla Clinical Center
Fred Hutchinson Cancer Research Center
1100 Fairview Avenue, N., M3-A410
P.O. Box 19024
Seattle, WA 98109-1024

Dorothy Lane, M.D., MPH
SUNY at Stony Brook
Department of Preventive Medicine
School of Medicine
HSC Level 3, Room 086
Stony Brook, NY 11790-8036

Norman Lasser, M.D., Ph.D.
University of Medicine and
Dentistry of New Jersey
Stanley S. Bergen Bldg, GB-20
65 Bergen Street
Newark, NJ 07107

Cora (Beth) Lewis, M.D., MSPH
University of Alabama, Birmingham
Division of Preventive Medicine
1717 11th Avenue S
700 Medical Tower Building
Birmingham, AL 35205-4785

Marian Limacher, M.D.
University of Florida
WHI Clinical Center
720 SW 2nd Avenue, Suite 207
Gainesville, FL 32601

JoAnn Manson, M.D., Dr.PH
Brigham & Women's Health Hospital
900 Commonwealth Avenue, E.
Boston, MA 02115

Karen Margolis, M.D., MPH
Berman Center for Clinical Research
825 South 8th Street, Suite 440
Minneapolis, MN 55404

Lisa Warsinger Martin, M.D., FACC
George Washington Lipid Research Clinic
2150 Pennsylvania Avenue, NW, Suite 4-417
Washington, DC 20037

Yvonne Michael, ScD
Kaiser Center for Health Research
3800 N. Interstate Avenue
Portland, OR 97227-1098

Lauren Nathan, M.D.
David Geffen School of Medicine at UCLA
22-215 CHS
10833 Le Conte Avenue
Los Angeles, CA 90094-9969

Judith Ockene, Ph.D.
University of Massachusetts Medical College
Division of Preventive & Behavioral Medicine
Lake Avenue North, Room S7-740
Worcester, MA 01655

Mary Jo O'Sullivan, M.D.
University of Miami School of Medicine
Department of OB/GYN
P. O. Box 016960 (D-53)
Miami, FL 33101

Lawrence Phillips, M.D.
Emory University School of Medicine
Two Decatur Town Center
125 Clairmont Avenue, Suite 320
Atlanta, GA 30030

Lynda H. Powell, Ph.D.
Chicago-Westside Clinical Center
Rush University Medical Center
Department of Preventive Medicine
1700 W. Van Buren, Suite 470
Chicago, IL 60612

Aleksandar Rajkovic, M.D., Ph.D.
Baylor Clinical Center
1709 Dryden Road, Suite 1100
Houston, TX 77030

John Robbins, M.D.
General Internal Medicine Research Clinic
University of California at Davis
2000 Stockton Boulevard
Sacramento, CA 95817

Gloria Sarto, M.D., Ph.D.
Madison Clinical Center
University of Wisconsin, Madison
700 Regent Street, Suite 301
Madison, WI 53715-2634

Michael Simon, M.D.
Wayne State University
WHI Clinical Center
275 E. Hancock
Detroit, MI 48201

Marcia Stefanick, Ph.D.
Stanford Prevention Research Center
Stanford University
Hoover Pavilion, Room N242
211 Quarry Road
Stanford, CA 94305-5705

Cynthia Thomson, Ph.D., RD
University of Arizona, Tucson
College of Public Health
P.O. Box 245170
Tucson, AZ 85775

Linda Van Horn, Ph.D., RD
Chicago Vanguard Clinical Center
680 N. Lake Shore Drive, Suite 1102
Chicago, IL 60611-8701

Mara Vitolins, Ph.D.
Wake Forest University Health Sciences
Medical Center Boulevard
Piedmont Plaza 1, PHRC
Winston Salem, NC 27157-1063

Jean Wactawski-Wende, Ph.D.
WNY Vanguard Clinical Center
65 Faber Hall
Buffalo, NY 14214-8001

Robert Wallace, M.D.
University of Iowa
C21-N GH
200 Hawkins Drive
Iowa City, IA 52242

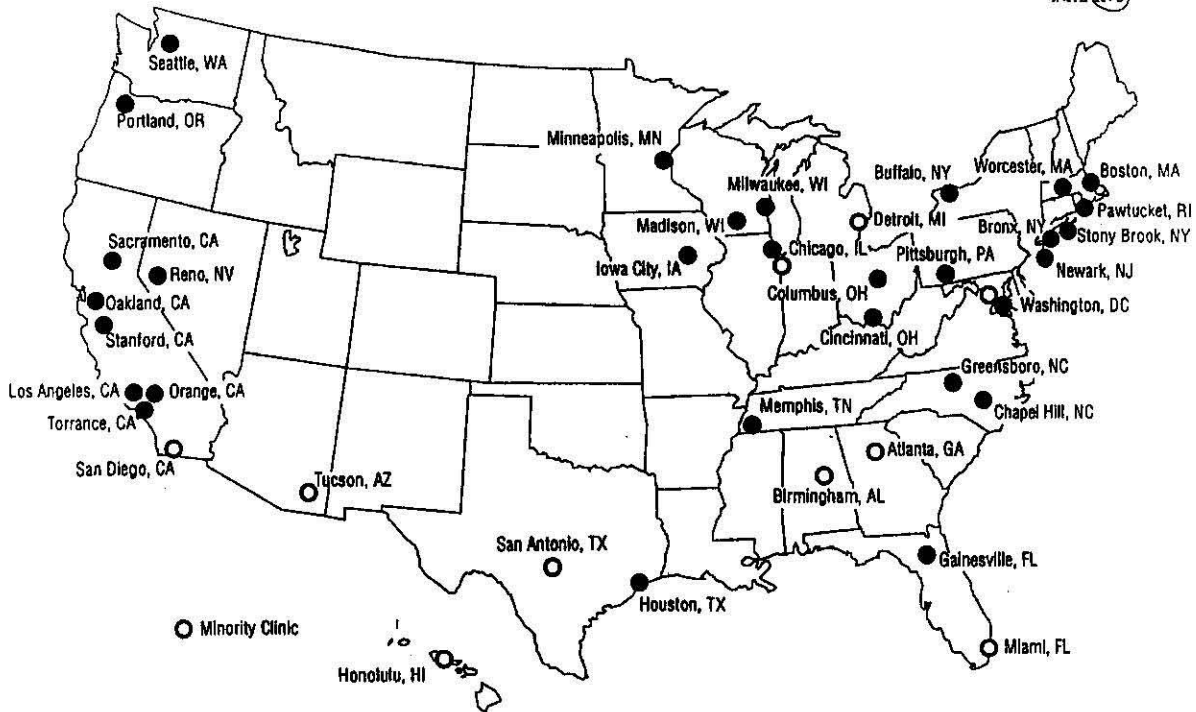
Sylvia Wassertheil-Smoller, Ph.D.
Albert Einstein College of Medicine
Department of Epidemiology & Social Medicine
1300 Morris Park Avenue
Room 1312 Belfer
Bronx, NY 10461

Women's Health Initiative Memory Study

Sally Shumaker, Ph.D.
WHIMS Coordinating Center
Wake Forest University School of Medicine
Dept. of Health Sciences – SSHP
2000 W. First Street
PP2 Building, 2nd Floor
Winston Salem, NC 27104



Women's Health Initiative Clinical Centers National Institutes of Health



Published papers

The list below includes all 429 published WHI papers, updated 11/9/09. Primary papers and Important Study Papers (ISP) are listed in bold text. Unpublished papers still in progress are not listed. Note that the citations provided below may not conform to requirements for all journals.

Most browsers will let you search this page by pressing CTRL+F. You may also use the filter below to generate a list of the papers in each focus area.

Paper focus: all

Change paper focus: **Select one**

ID	Citation	PubMed	PDF
846	Prentice RL, Huang Y, Hinds DA, Peters U, Pettinger M, Cox DR, Beilharz E, Chlebowski RT, Rossouw JE, Caan B, Ballinger DG. Variation in the FGFR2 gene and the effects of postmenopausal hormone therapy on invasive breast cancer. <i>Cancer Epidemiol Biomarkers Prev.</i> 2009 Oct 27. [Epub ahead of print]	abstract	full
598	Resnick SM, Espeland MA, An Y, Maki PM, Coker LH, Jackson R, Stefanick ML, Wallace R, Rapp SR; for the Women's Health Initiative Study of Cognitive Aging Investigators. Effects of conjugated equine estrogens on cognition and affect in postmenopausal women with prior hysterectomy. <i>J Clin Endocrinol Metab.</i> 2009 Oct 22. [Epub ahead of print]	abstract	full
567	Crandall CJ, Aragaki AK, Chlebowski RT, McTiernan A, Anderson G, Hendrix SL, Cochrane BB, Kuller LH, Cauley JA. New-onset breast tenderness after initiation of estrogen plus progestin therapy and breast cancer risk. <i>Arch Intern Med.</i> 2009 Oct 12;169(18):1684-91	abstract	full
718	Carbone LD, Johnson KC, Robbins J, Larson JC, Curb JD, Watson K, Gass M, Lacroix AZ. Antiepileptic Drug Use, Falls, Fractures and BMD in Postmenopausal Women: Findings from the Women's Health Initiative (WHI). <i>J Bone Miner Res.</i> 2009 Oct 19. [Epub ahead of print]	abstract	
510	Rajpathak SN, Freiberg MS, Wang C, Wylie-Rosett J, Wildman RP, Rohan TE, Robinson JG, Liu S, Wassertheil-Smoller S. Alcohol consumption and the risk of coronary heart disease in postmenopausal women with diabetes: Women's Health Initiative Observational Study. <i>Eur J Nutr.</i> 2009 Oct 13. [Epub ahead of print]	abstract	full
375	De Roos AJ, Ulrich CM, Ray RM, Mossavar-Rahmani Y, Rosenberg CA, Caan BJ, Thomson CA, McTiernan A, Lacroix AZ. Intentional weight loss and risk of lymphohematopoietic cancers. <i>Cancer Causes Control.</i> 2009 Oct 23. [Epub ahead of print]	abstract	full
575	Michael YL, Gold R, Manson JE, Keast EM, Cochrane BB, Woods NF, Brzyski RG, McNeeley SG, Wallace RB. Hormone therapy and physical function change among older women in the Women's Health Initiative: a randomized controlled trial. <i>Menopause.</i> 2009 Oct 23. [Epub ahead of print]	abstract	full
794	Espeland MA, Tindle HA, Bushnell CA, Jaramillo SA, Kuller LH, Margolis KL, Mysiw WJ, Maldjian JA, Melhem ER, Resnick SM; for the Women's Health Initiative Memory Study. Brain volumes, cognitive impairment, and conjugated equine estrogens. <i>J Gerontol A Biol Sci Med Sci.</i> 2009 Sep 3. [Epub ahead of print]	abstract	full
569	Lacroix AZ, Beck TJ, Cauley JA, Lewis CE, Bassford T, Jackson R, Wu G, Chen Z. Hip structural geometry and incidence of hip fracture in postmenopausal women: what does it add to conventional bone mineral density? <i>Osteoporos Int.</i> 2009 Sep 15. [Epub ahead of print]	abstract	full
392	Li R, O'Sullivan MJ, Robinson J, Safford MM, Curb D, Johnson KC. Family history of myocardial infarction predicts incident coronary heart disease in postmenopausal women with diabetes: the Women's Health Initiative Observational Study. <i>Diabetes Metab Res Rev.</i> 2009 Sep 24. [Epub ahead of print]	abstract	full
848	Chlebowski RT, Schwartz AG, Wakelee H, Anderson GL, Stefanick ML, Manson JE, Rodabough RJ, Chien JW, Wactawski-Wende J, Gass M, Kotchen JM, Johnson KC, O'Sullivan MJ, Ockene JK, Chen C, Hubbell FA; for the Women's Health Initiative Investigators. Oestrogen plus progestin and lung cancer in postmenopausal women (Women's Health Initiative trial): a post-hoc analysis of a randomised controlled trial. <i>Lancet.</i> 2009 Sep 18. [Epub ahead of print].	abstract	full
651	Freiberg MS, Chang YF, Kraemer KL, Robinson JG, Adams-Campbell LL, Kuller LL. Alcohol consumption, hypertension, and total mortality among women. <i>Am J Hypertens.</i> 2009 Sep 3. [Epub ahead of print]	abstract	full

558	Atkinson HH, Rapp SR, Williamson JD, Lovato J, Absher JR, Gass M, Henderson VW, Johnson KC, Kostis JB, Sink KM, Mouton CP, Ockene JK, Stefanick ML, Lane DS, Espeland MA. The relationship between cognitive function and physical performance in older women: Results from the Women's Health Initiative Memory Study. <i>J Gerontol A Biol Sci Med Sci</i> . 2009 Sep 29. [Epub ahead of print]	abstract	full
676	Caan BJ, Aragaki A, Thomson CA, Stefanick ML, Chlebowski R, Hubbell FA, Tinker L, Vitolins M, Rajkovic A, Bueche M, Ockene J. Vasomotor symptoms, adoption of a low-fat dietary pattern, and risk of invasive breast cancer: A secondary analysis of the Women's Health Initiative Randomized Controlled Dietary Modification Trial. <i>J Clin Oncol</i> . 2009 Sep 20;27(27):4500-7. Epub 2009 Aug 17.	abstract	full
697	Tindle HA, Chang YF, Kuller LH, Manson JE, Robinson JG, Rosal MC, Siegle GJ, Matthews KA. Optimism, cynical hostility, and incident coronary heart disease and mortality in the Women's Health Initiative. <i>Circulation</i> . 2009 Aug 25;120(8):656-62. Epub 2009 Aug 10.	abstract	full
673	Baker MW, Lacroix AZ, Wu C, Cochrane BB, Wallace R, Woods NF. Mortality risk associated with physical and verbal abuse in women aged 50 to 79. <i>J Am Geriatr Soc</i> . 2009 Oct;57(10):1799-809. Epub 2009 Aug 13.	abstract	full
662	Reiner AP, Aragaki AK, Gray SL, Wactawski-Wende J, Cauley JA, Cochrane BB, Kooperberg CL, Woods NF, Lacroix AZ. Inflammation and Thrombosis Biomarkers and Incident Frailty in Postmenopausal Women. <i>Am J Med</i> . 2009 Oct;122(10):947-54. Epub 2009 Aug 13	abstract	full
936	Amundadottir L, Kraft P, Stolzenberg-Solomon RZ, Fuchs CS, Petersen GM, Arslan AA, Bueno-de-Mesquita HB, Gross M, Helzlsouer K, Jacobs EJ, Lacroix A, Zheng W, Albanes D, Bamlet W, Berg CD, Berrino F, Bingham S, Buring JE, Bracci PM, Canzian F, Clavel-Chapelon F, Clipp S, Cotterchio M, de Andrade M, Duell EJ, Fox Jr JW, Gallinger S, Gaziano JM, Giovannucci EL, Goggins M, González CA, Hallmans G, Hankinson SE, Hassan M, Holly EA, Hunter DJ, Hutchinson A, Jackson R, Jacobs KB, Jenab M, Kaaks R, Klein AP, Kooperberg C, Kurtz RC, Li D, Lynch SM, Mandelson M, McWilliams RR, Mendelsohn JB, Michaud DS, Olson SH, Overvad K, Patel AV, Peeters PH, Rajkovic A, Riboli E, Risch HA, Shu XO, Thomas G, Tobias GS, Trichopoulos D, Van Den Eeden SK, Virtamo J, Wactawski-Wende J, Wolpin BM, Yu H, Yu K, Zeleniuch-Jacquotte A, Chanock SJ, Hartge P, Hoover RN. Genome-wide association study identifies variants in the ABO locus associated with susceptibility to pancreatic cancer. <i>Nat Genet</i> . 2009 Aug 2. [Epub ahead of print]	abstract	full
1071	Stefanick ML. WHI hormone trials: A window to the future, a view from the past. <i>Sexuality, Reproduction and Menopause</i> . 2009 August.		full
577	Moeller SM, Volland R, Sarto GE, Gobel VL, Streicher SL, Mares JA. Women's Health Initiative Diet Intervention did not increase macular pigment optical density in an Ancillary Study of a subsample of the Women's Health Initiative. <i>J Nutr</i> . 2009 Sep;139(9):1692-9. Epub 2009 Jul 8	abstract	full
875	Lynch SM, Vrieling A, Lubin JH, Kraft P, Mendelsohn JB, Hartge P, Canzian F, Steplowski E, Arslan AA, Gross M, Helzlsouer K, Jacobs EJ, Lacroix A, Petersen G, Zheng W, Albanes D, Amundadottir L, Bingham SA, Boffetta P, Boutron-Ruault MC, Chanock SJ, Clipp S, Hoover RN, Jacobs K, Johnson KC, Kooperberg C, Luo J, Messina C, Palli D, Patel AV, Riboli E, Shu XO, Rodriguez Suarez L, Thomas G, Tjønneland A, Tobias GS, Tong E, Trichopoulos D, Virtamo J, Ye W, Yu K, Zeleniuch-Jacquette A, Bueno-de-Mesquita HB, Stolzenberg-Solomon RZ. Cigarette smoking and pancreatic cancer: A pooled analysis from the Pancreatic Cancer Cohort Consortium. <i>Am J Epidemiol</i> . 2009 Aug 15;170(4):403-13. Epub 2009 Jun 26	abstract	full
882	Kabat GC, Kim M, Chlebowski RT, Khandekar J, Ko MG, McTiernan A, Neuhauser ML, Parker DR, Shikany JM, Stefanick ML, Thomson CA, Rohan TE. A Longitudinal Study of the Metabolic Syndrome and Risk of Postmenopausal Breast Cancer. <i>Cancer Epidemiol Biomarkers Prev</i> . 2009 Jul;18(7):2046-53. Epub 2009 Jun 30.	abstract	full
807	Kabat GC, Kim M, Caan BJ, Chlebowski RT, Gunter MJ, Ho GY, Rodriguez BL, Shikany JM, Strickler HD, Vitolins MZ, Rohan TE. Repeated measures of serum glucose and insulin in relation to postmenopausal breast cancer. <i>Int J Cancer</i> . 2009 Dec 1;125(11):2704-10. Epub 2009 Jun 2.	abstract	full
433	Cauley JA, Lacroix AZ, Robbins JA, Larson J, Wallace R, Wactawski-Wende J, Chen Z, Bauer DC, Cummings SR, Jackson R. Baseline serum estradiol and fracture reduction during treatment with hormone therapy: The Women's Health Initiative randomized trial. <i>Osteoporos Int</i> . 2009 May 13. [Epub ahead of print]	abstract	full
628	Prentice RL, Manson JE, Langer RD, Anderson GL, Pettinger M, Jackson RD, Johnson KC, Kuller LH, Lane DS, Wactawski-Wende J, Brzyski R, Allison M, Ockene J, Sarto G, Rossouw JE. Benefits and risks of postmenopausal hormone therapy when it is initiated soon after menopause. <i>Am J Epidemiol</i> . 2009 Jul 1;170(1):12-23. Epub 2009 May 25.	abstract	full

590	Schwarz EB, Ray RM, Stuebe AM, Allison MA, Ness RB, Freiberg MS, Cauley JA. Duration of Lactation and Risk Factors for Maternal Cardiovascular Disease. <i>Obstet Gynecol.</i> 2009 May;113(5):974-982.	abstract	full
630	Prentice RL, Pettinger M, Beresford SA, Wactawski-Wende J, Hubbell FA, Stefanick ML, Chlebowski RT. Colorectal cancer in relation to postmenopausal estrogen and estrogen plus progestin in the Women's Health Initiative Clinical Trial and Observational Study. <i>Cancer Epidemiol Biomarkers Prev.</i> 2009 May;18(5):1531-7.	abstract	full
808	Kabat GC, Kim M, Adams-Campbell LL, Caan BJ, Chlebowski RT, Neuhouser ML, Shikany JM, Rohan TE. Longitudinal study of serum carotenoid, retinol, and tocopherol concentrations in relation to breast cancer risk among postmenopausal women. <i>Am J Clin Nutr.</i> 2009 Jul;90(1):162-9. Epub 2009 May 27.	abstract	full
843	Katayama H, Paczesny S, Prentice R, Aragaki A, Faca VM, Pitteri SJ, Zhang Q, Wang H, Silva M, Kennedy J, Rossouw J, Jackson R, Hsia J, Chlebowski R, Manson JE, Hanash SM. Application of serum proteomics to the Women's Health Initiative conjugated equine estrogens trial reveals a multitude of effects relevant to clinical findings. <i>Genome Med.</i> 2009 Apr 29;1(4):47	abstract	full
971	Prentice RL, Huang Y, Tinker LF, Beresford SA, Lampe JW, Neuhouser ML. Statistical aspects of the use of biomarkers in nutritional epidemiology research. <i>Stat Biosci.</i> 2009 May 1;1(1):112-123. Epub 2009 Apr 29.	abstract	
467	McTiernan A, Wactawski-Wende J, Wu L, Rodabough RJ, Watts NB, Tylavsky F, Freeman R, Hendrix S, Jackson R. Low-fat, increased fruit, vegetable, and grain dietary pattern, fractures, and bone mineral density: the Women's Health Initiative Dietary Modification Trial. <i>Am J Clin Nutr.</i> 2009 Jun;89(6):1864-76. Epub 2009 Apr 29.	abstract	full
314	Berger JS, Brown DL, Burke GL, Oberman A, Kostis JB, Langer RD, Wong ND, Wassertheil-Smoller S. Aspirin use, dose, and clinical outcomes in postmenopausal women with stable cardiovascular disease. <i>Circ Cardiovasc Qual Outcomes</i> 2009 2: 78-87.		full
215	Michael YL, Carlson NE, Chlebowski RT, Aickin M, Weihs KL, Ockene JK, Bowen DJ, Ritenbaugh C. Influence of stressors on breast cancer incidence in the Women's Health Initiative. <i>Health Psychol.</i> 2009 Mar;28(2):137-146.	abstract	full
874	Thomas et al. A multistage genome-wide association study in breast cancer identifies two new risk alleles at 1p11.2 and 14q24.1 (RAD51L1). <i>Nat Genet.</i> 2009 May;41(5):579-84. Epub 2009 Mar 29	abstract	full
624	Prentice RL, Shaw PA, Bingham SA, Beresford SAA, Caan B, Neuhouser ML, Patterson RE, Stefanick ML, Satterfield S, Thomson CA, Snetselaar L, Thomas A, Tinker LF. Biomarker-calibrated energy and protein consumption and increased cancer risk among postmenopausal women. <i>Am J Epidemiol.</i> 2009 Apr 15;169(8):977-89. Epub 2009 Mar 3	abstract	full
489	Beck TJ, Petit MA, Wu G, Leboff MS, Cauley JA, Chen Z. Does obesity really make the femur stronger? Bone Mineral Density, geometry and fracture incidence in the Women's Health Initiative - Observational Study. <i>J Bone Miner Res.</i> 2009 Aug;24(8):1369-79. Epub 2009 Mar 17	abstract	full
907	Ahmed et al. Newly discovered breast cancer susceptibility loci on 3p24 and 17q23.2. <i>Nat Genet.</i> 2009 May;41(5):585-90. Epub 2009 Mar 29	abstract	full
472	LaCroix AZ, Kotchen J, Anderson G, Brzyski R, Cauley JA, Cummings SR, Gass M, Johnson KC, Ko M, Larson J, Manson JE, Stefanick ML, Wactawski-Wende J. Calcium plus Vitamin D supplementation and mortality in postmenopausal women: The Women's Health Initiative Calcium-Vitamin D Randomized Controlled Trial. <i>J Gerontol A Biol Sci Med Sci.</i> 2009 May;64(5):559-67. Epub 2009 Feb 16.	abstract	full
301	Gray SL, LaCroix AZ, Aragaki AK, McDermott M, Cochrane BB, Kooperberg CL, Murray AM, Rodriguez B, Black H, Woods NF; Women's Health Initiative Observational Study. Angiotensin-converting enzyme inhibitor use and incident frailty in women aged 65 and older: prospective findings from the Women's Health Initiative Observational Study. <i>J Am Geriatr Soc.</i> 2009 Feb;57(2):297-303.	abstract	full
426	Millen AE, Pettinger M, Freudenheim JL, Langer RD, Rosenberg CA, Mossavar-Rahmani Y, Duffy CM, Lane DS, McTiernan A, Kuller LH, Lopez AM, Wactawski-Wende J. Incident invasive breast cancer, geographic location of residence, and reported average time spent outside. <i>Cancer Epidemiol Biomarkers Prev.</i> 2009 Feb;18(2):495-507. Epub 2009 Feb 3.	abstract	full
641	Hsia J, Larson JC, Ockene JK, Sarto GE, Allison MA, Hendrix SL, Robinson JG, LaCroix AZ, Manson JE; Women's Health Initiative Research Group. Resting heart rate as a low tech	abstract	full

	predictor of coronary events in women: prospective cohort study. <i>BMJ</i> . 2009 Feb 3;338:b219. doi: 10.1136/bmj.b219.		
583	Neuhouser ML, Wassertheil-Smoller S, Thomson C, Aragaki A, Anderson GL, Manson J, Patterson R, Rohan TE, van Horn L, Shikany JM, Thomas A, LaCroix A, Prentice R. Multivitamin use and risk of cancer and cardiovascular disease in the Women's Health Initiative cohorts. <i>Arch Intern Med</i> . 2009 Feb 9;169(3):294-304.	abstract	full
850	Whitsel EA, Quibrera PM, Christ SL, Liao D, Prineas RJ, Anderson GL, Heiss G. Heart rate variability, ambient particulate matter air pollution, and glucose homeostasis: The Environmental Epidemiology of Arrhythmogenesis in the Women's Health Initiative. <i>Am J Epidemiol</i> . 2009 Mar 15;169(6):693-703. Epub 2009 Feb 10.	abstract	full
723	Chlebowski RT, Kuller LH, Prentice RL, Stefanick ML, Manson JE, Gass M, Aragaki AK, Ockene JK, Lane DS, Sarto GE, Rajkovic A, Schenken R, Hendrix SL, Ravdin PM, Rohan TE, Yasmeen S, Anderson G; WHI Investigators. Breast cancer after use of estrogen plus progestin in postmenopausal women. <i>N Engl J Med</i>. 2009 Feb 5;360(6):573-87.	abstract	full
442	Meyer AM, Evenson KR, Morimoto L, Siscovick D, White E. Test-retest reliability of the Women's Health Initiative Physical Activity Questionnaire. <i>Med Sci Sports Exerc</i> . 2009 Mar;41(3):530-8. Epub 2009 Feb 6	abstract	full
416	Ness RB, Albano JD, McTiernan A, Cauley JA. Influence of estrogen plus testosterone supplementation on breast cancer. <i>Arch Intern Med</i> . 2009 Jan 12;169(1):41-6.	abstract	full
529	Zhang Z, Whitsel EA, Quibrera PM, Smith RL, Liao D, Anderson GL, Prineas RJ. Ambient fine particulate matter exposure and myocardial ischemia in the Environmental Epidemiology of Arrhythmogenesis In the Women's Health Initiative (EEAWHI). <i>Environ Health Perspect</i> . 2009 May;117(5):751-6. Epub 2009 Jan 23	abstract	full
479	LeBoff MS, Narweker R, LaCroix A, Wu L, Jackson R, Lee J, Bauer DC, Cauley J, Kooperberg C, Lewis C, Thomas AM, Cummings S. Homocysteine levels and risk of hip fracture in postmenopausal women. <i>J Clin Endocrinol Metab</i> . 2009 Apr;94(4):1207-13. Epub 2009 Jan 27	abstract	full
195	Brunner R, Dunbar-Jacob J, Leboff MS, Granek I, Bowen D, Snetselaar LG, Shumaker SA, Ockene J, Rosal M, Wactawski-Wende J, Cauley J, Cochrane B, Tinker L, Jackson R, Wang CY, Wu L. Predictors of adherence in the Women's Health Initiative Calcium and Vitamin D Trial. <i>Behav Med</i> . 2009 Winter;34(4):145-55.	abstract	full
636	Kudish BI, Iglesia CB, Sokol RJ, Cochrane B, Richter HE, Larson J, Hendrix SL, Howard BV. Effect of weight change on natural history of pelvic organ prolapse. <i>Obstet Gynecol</i> . 2009 Jan;113(1):81-88.	abstract	full
929	Gass MLS, Bassuk SS, Manson JE. Reassessing benefits and risks of hormone therapy. <i>Am J Lifestyle Med</i> . 2009 Jan;3(1):29-43.		full
626	Resnick SM, Espeland MA, Jaramillo SA, Hirsch C, Stefanick ML, Murray AM, Ockene J, Davatzikos C. Postmenopausal hormone therapy and regional brain volumes: The WHIMS-MRI Study. <i>Neurology</i> . 2009 Jan 13;72(2):135-42.	abstract	full
625	Coker LH, Hogan PE, Bryan NR, Kuller LH, Margolis KL, Bettermann K, Wallace RB, Lao Z, Freeman R, Stefanick ML, Shumaker SA. Postmenopausal hormone therapy and subclinical cerebrovascular disease: The WHIMS-MRI Study. <i>Neurology</i> . 2009 Jan 13;72(2):125-34.	abstract	full
609	Liao D, Whitsel EA, Duan Y, Lin HM, Quibrera PM, Smith R, Peuquet DJ, Prineas RJ, Zhang ZM, Anderson G. Ambient particulate air pollution and ectopy: The environmental epidemiology of arrhythmogenesis in Women's Health Initiative Study, 1999-2004. <i>J Toxicol Environ Health A</i> . 2009;72(1):30-8.	abstract	full
560	Carbone LD, Johnson KC, Bush AJ, Robbins J, Larson JC, Thomas A, LaCroix AZ. Loop diuretic use and fracture in postmenopausal women: Findings from the Women's Health Initiative. <i>Arch Intern Med</i> . 2009 Jan 26;169(2):132-40.	abstract	full
633	Caire-Juvera G, Ritenbaugh C, Wactawski-Wende J, Snetselaar LG, Chen Z. Vitamin A and retinol intakes and the risk of fractures among participants of the Women's Health Initiative Observational Study. <i>Am J Clin Nutr</i> . 2009 Jan;89(1):323-30. Epub 2008 Dec 3.	abstract	full
879	Jackson RD, Donepudi S, Mysiw WJ. Epidemiology of fracture risk in the Women's Health Initiative. <i>Curr Osteoporos Rep</i> . 2008 Dec;6(4):155-61.	abstract	full
660	Lee CC, You NC, Song Y, Hsu YH, Manson J, Nathan L, Tinker L, Liu S. Relation of genetic variation in the gene coding for c-reactive protein with its plasma protein concentrations: Findings from the Women's Health Initiative Observational Cohort. <i>Clin Chem</i> . 2009 Feb;55(2):351-60. Epub 2008 Dec 18	abstract	full

461	Gunter MJ, Hoover DR, Yu H, Wassertheil-Smoller S, Rohan TE, Manson JE, Li J, Ho GY, Xue X, Anderson GL, Kaplan RC, Harris TG, Howard BV, Wylie-Rosett J, Burk RD, Strickler HD. Insulin, insulin-like growth factor-I, and risk of breast cancer in postmenopausal women. <i>J Natl Cancer Inst.</i> 2009 Jan 7;101(1):48-60. Epub 2008 Dec 30.	abstract	full
871	Prentice RL. Data analysis methods and the reliability of analytic epidemiologic research. <i>Epidemiology.</i> 2008 Nov;19(6):785-8; discussion 789-93.	abstract	full
526	Rossouw JE, Cushman M, Greenland P, Lloyd-Jones DM, Bray P, Kooperberg C, Pettinger M, Robinson J, Hendrix S, Hsia J. Inflammatory, lipid, thrombotic, and genetic markers of coronary heart disease risk in the Women's Health Initiative trials of hormone therapy. <i>Arch Intern Med.</i> 2008 Nov 10;168(20):2245-53.	abstract	full
602	Kaplan RC, McGinn AP, Baird AE, Hendrix SL, Kooperberg C, Lynch J, Rosenbaum DM, Johnson KC, Strickler HD, Wassertheil-Smoller S. Inflammation and hemostasis biomarkers for predicting stroke in postmenopausal women: the Women's Health Initiative Observational Study. <i>J Stroke Cerebrovasc Dis.</i> 2008 Nov-Dec;17(6):344-55.	abstract	full
677	Chlebowski RT, Johnson KC, Kooperberg C, Pettinger M, Wactawski-Wende J, Rohan T, Rossouw J, Lane D, O'Sullivan MJ, Yasmeen S, Hiatt RA, Shikany JM, Vitolins M, Khandekar J, Hubbell FA; for the Women's Health Initiative Investigators. Calcium plus vitamin D supplementation and the risk of breast cancer. <i>J Natl Cancer Inst.</i> 2008 Nov 19;100(22):1581-1591. Epub 2008 Nov 11.	abstract	full
319	Schnall E, Wassertheil-Smoller S, Swencionis C, Zemon V, Tinker L, O'Sullivan MJ, Van Horn L, Goodwin M. The relationship between religion and cardiovascular outcomes and all-cause mortality in the Women's Health Initiative Observational Study. <i>Psychol Health.</i> 2008 Nov 17. [Epub ahead of print].		full
386	Thomson CA, Neuhouser ML, Shikany JM, Caan BJ, Monk BJ, Mossavar-Rahmani Y, Sarto G, Parker LM, Modugno F, Anderson GL. The role of antioxidants and vitamin A in ovarian cancer: Results from the Women's Health Initiative. <i>Nutr Cancer.</i> 2008;60(6):710-9.	abstract	full
584	Rohan TE, Negassa A, Chlebowski RT, Ceria-Ulep CD, Cochrane BB, Lane DS, Ginsberg M, Wassertheil-Smoller S, Page DL. A randomized controlled trial of calcium plus vitamin D supplementation and risk of benign proliferative breast disease. <i>Breast Cancer Res Treat.</i> 2009 Jul;116(2):339-50. Epub 2008 Oct 14	abstract	full
74	Paskett ED, Alfano CM, Davidson MA, Andersen BL, Naughton MJ, Sherman A, McDonald PG, Hays J. Breast cancer survivors' health-related quality of life: Racial differences and comparisons with noncancer controls. <i>Cancer.</i> 2008 Dec 1;113(11):3222-30. Epub 2008 Oct 30.	abstract	full
645	Lederle FA, Larson JC, Margolis KL, Allison MA, Freiberg MS, Cochrane BB, Graettinger WF, Curb JD; Women's Health Initiative Cohort Study. Abdominal aortic aneurysm events in the Women's Health Initiative: cohort study. <i>BMJ.</i> 2008 Oct 14;337:a1724.	abstract	full
865	Chlebowski RT, Prentice RL. Menopausal hormone therapy in BRCA1 mutation carriers: Uncertainty and caution. <i>J Natl Cancer Inst.</i> 2008 Oct 1;100(19):1341-3. Epub 2008 Sep 23.	abstract	full
657	McCall-Hosenfeld JS, Jaramillo SA, Legault C, Freund KM, Cochrane BB, Manson JE, Wenger NK, Eaton CB, Rodriguez BL, McNeeley SG, Bonds D. Correlates of sexual satisfaction among sexually active postmenopausal women in the Women's Health Initiative-Observational Study. <i>J Gen Intern Med.</i> 2008 Dec;23(12):2000-9. Epub 2008 Oct 7.	abstract	full
700	Mossavar-Rahmani Y & Tinker LF. Women's Health Initiative Dietary Modification Randomized Controlled Trial. In: D'Agostino RB et al, eds. <i>Wiley encyclopedia of clinical trials.</i> New York: Wiley-Interscience, 2008.		full
591	Allison MA, Manson JE, Langer RD, Aragaki A, Smoller S, Lewis CE, Thomas A, Lawson W, Cochrane BB, Hsia J, Hunt JR, Robinson J. Association between different measures of blood pressure and coronary artery calcium in postmenopausal women. <i>Hypertension.</i> 2008 Nov;52(5):833-40. Epub 2008 Sep 15.	abstract	full
664	Song Y, You NC, Hsu YH, Howard BV, Langer RD, Manson JE, Nathan L, Niu T, F Tinker L, Liu S. FTO polymorphisms are associated with obesity but not diabetes risk in postmenopausal women. <i>Obesity (Silver Spring).</i> 2008 Nov;16(11):2472-80. Epub 2008 Sep 11.	abstract	full
475	Brunner RL, Cochrane B, Jackson RD, Larson J, Lewis C, Limacher M, Rosal M, Shumaker S, Wallace R; Women's Health Initiative Investigators. Calcium, Vitamin D Supplementation, and Physical Function in the Women's Health Initiative. <i>J Am Diet Assoc.</i> 2008 Sep;108(9):1472-9.	abstract	full
468	Margolis KL, Ray RM, Van Horn L, Manson JE, Allison MA, Black HR, Beresford SAA,	abstract	full

	Connelly SA, Curb JD, Grimm RH, Kotchen TA, Kuller LH, Wassertheil-Smoller S, Thomson CA, Torner JC, for the Women's Health Initiative Investigators. Effect of Calcium and Vitamin D Supplementation on Blood Pressure. The Women's Health Initiative Randomized Trial. Hypertension. 2008 Nov;52(5):847-55. Epub 2008 Sep 29.		
181	Duffy CM, Assaf A, Cyr M, Burkholder G, Coccio E, Rohan T, McTiernan A, Paskett E, Lane D, Chetty VK. Alcohol and folate intake and breast cancer risk in the WHI Observational Study. <i>Breast Cancer Res Treat.</i> 2009 Aug;116(3):551-62. Epub 2008 Sep 11.	abstract	full
401	Aggarwal A, Freund K, Sato A, Adams-Campbell LL, Lopez AM, Lessin LS, Ockene J, Wallace RB, Williams CD, Bonds DE. Are depressive symptoms associated with cancer screening and cancer stage at diagnosis among postmenopausal women? The Women's Health Initiative Observational Cohort. <i>J Womens Health (Larchmt).</i> 2008 Oct;17(8):1353-61. Epub 2008 Sep 14.	abstract	full
404	Chen Z, Maricic M, Aragaki AK, Mouton C, Arendell L, Lopez AM, Bassford T, Chlebowski RT. Fracture risk increases after diagnosis of breast or other cancers in postmenopausal women: Results from the Women's Health Initiative. <i>Osteoporos Int.</i> 2009 Apr;20(4):527-36. Epub 2008 Sep 3.	abstract	full
353	Ritenbaugh C, Stanford JL, Wu L, Shikany JM, Schoen RE, Stefanick ML, Taylor V, Garland C, Frank G, Lane D, Mason E, McNeeley SG, Ascensao J, Chlebowski RT; For the Women's Health Initiative Investigators. Conjugated equine estrogens and colorectal cancer incidence and survival: The Women's Health Initiative Randomized Clinical Trial. <i>Cancer Epidemiol Biomarkers Prev.</i> 2008 Oct;17(10):2609-2618. Epub 2008 Sep 30.	abstract	full
587	Rohan TE, Negassa A, Chlebowski RT, Lasser NL, McTiernan A, Schenken RS, Ginsberg M, Wassertheil-Smoller S, Page DL. Estrogen plus progestin and risk of benign proliferative breast disease. <i>Cancer Epidemiol Biomarkers Prev.</i> 2008 Sep;17(9):2337-43. Epub 2008 Aug 25.	abstract	full
634	Cauley JA, LaCroix AZ, Wu L, Horwitz M, Danielson ME, Bauer DC, Lee JS, Jackson RD, Robbins JA, Wu C, Stanczyk FZ, LeBoff MS, Wactawski-Wende J, Sarto G, Ockene J, Cummings SR. Serum 25 hydroxyvitamin D concentrations and the risk of hip fractures: The Women's Health Initiative. <i>Ann Intern Med.</i> 2008 Aug;149(4):242-50.	abstract	full
775	Col NF, Chlebowski RT. Risks and benefits of therapy with menopausal hormones versus selective estrogen-receptor modulators in peri- and postmenopausal women at increased breast cancer risk. <i>Menopause.</i> 2008 Jul-Aug;15(4 Suppl):804-9.	abstract	full
173	Johnson KC, Margolis KL, Espeland MA, Colenda CC, Fillit H, Manson JE, Masaki KH, Mouton CP, Prineas R, Robinson JG, Wassertheil-Smoller S; for the Women's Health Initiative Memory Study and Women's Health Initiative Investigators. A prospective study of the effect of hypertension and baseline blood pressure on cognitive decline and dementia in postmenopausal women: The Women's Health Initiative Memory Study. <i>J Am Geriatr Soc.</i> 2008 Aug;56(8):1449-58. Epub 2008 Jul 15	abstract	full
689	Wang T, Ho G, Ye K, Strickler H, Elston RC. A partial least-square approach for modeling gene-gene and gene-environment interactions when multiple markers are genotyped. <i>Genet Epidemiol.</i> 2008 Jul 9;33(1):6-15	abstract	full
340	Chen Z, Beck T, Cauley JA, Lewis CE, Lacroix A, Bassford T, Wu G, Sherrill D, Going S. Hormone therapy improves femur geometry among ethnically diverse postmenopausal participants in the Women's Health Initiative Hormone Intervention Trials. <i>J Bone Miner Res.</i> 2008 Dec;23(12):1935-45. Epub 2008 Jul 29.	abstract	full
535	Hsia J, Otvos JD, Rossouw JE, Wu L, Wassertheil-Smoller S, Hendrix SL, Robinson JG, Lund B, Kuller LH; for the Women's Health Initiative Research Group. Lipoprotein particle concentrations may explain the absence of coronary protection in the Women's Health Initiative Hormone Trials. <i>Arterioscler Thromb Vasc Biol.</i> 2008 Sep;28(9):1666-71. Epub 2008 Jul 3.	abstract	full
565	Wright NC, Riggs GK, Lisse JR, Chen Z. Self-reported osteoarthritis, ethnicity, body mass index, and other associated risk factors in postmenopausal women: Results from the Women's Health Initiative. <i>J Am Geriatr Soc.</i> 2008 Sep;56(9):1736-43. Epub 2008 Jul 17.	abstract	full
585	Rohan TE, Negassa A, Caan B, Chlebowski RT, Curb JD, Ginsberg M, Lane DS, Neuhaus ML, Shikany JM, Wassertheil-Smoller S, Page DL. Low-fat dietary pattern and risk of benign proliferative breast disease: A randomized, controlled dietary modification trial. <i>Cancer Prev Res (Phila Pa).</i> 2008 Sep;1(4):275-84. Epub 2008 Jul 9.	abstract	full
618	Kabat GC, Shikany JM, Beresford SA, Caan B, Neuhaus ML, Tinker LF, Rohan TE. Dietary carbohydrate, glycemic index, and glycemic load in relation to colorectal cancer risk in the Women's Health Initiative. <i>Cancer Causes Control.</i> 2008 Dec;19(10):1291-8. Epub 2008 Jul	abstract	full

10.			
614	Cauley JA, Wampler NS, Barnhart JM, Wu L, Allison M, Chen Z, Hendrix S, Robbins J, Jackson RD. Incidence of fractures compared to cardiovascular disease and breast cancer: The Women's Health Initiative Observational Study. <i>Osteoporos Int.</i> 2008 Dec;19(12):1717-23. Epub 2008 Jul 16	abstract	full
613	Luo J, Margolis KL, Adami HO, LaCroix A, Ye W; Women's Health Initiative Investigators. Obesity and risk of pancreatic cancer among postmenopausal women: the Women's Health Initiative (United States). <i>Br J Cancer.</i> 2008 Aug 5;99(3):527-31. Epub 2008 Jul 15.	abstract	full
541	Tinker LF, Bonds DE, Margolis KL, Manson JE, Howard BV, Larson J, Perri MG, Beresford SAA, Robinson JG, Rodriguez B, Safford MM, Wenger NK, Stevens VJ, Parker LM. Low-fat dietary pattern and risk of treated diabetes mellitus in postmenopausal women: the Women's Health Initiative randomized controlled dietary modification trial. <i>Arch Intern Med.</i> 2008 Jul 28;168(14):1500-11.	abstract	full
496	Chen Z, Arendell L, Aickin M, Cauley J, Lewis CE, Chlebowski R. Hip bone density predicts breast cancer risk independently of Gail score: Results from the Women's Health Initiative. <i>Cancer.</i> 2008 Sep 1;113(5):907-15. Epub 2008 Jul 29.	abstract	full
563	LaCroix AZ, Lee JS, Wu L, Cauley JA, Shlipak MG, Ott SM, Robbins J, Curb JD, Leboff M, Bauer DC, Jackson RD, Kooperberg CL, Cummings SR. Cystatin-C, renal function, and incidence of hip fracture in postmenopausal women. <i>J Am Geriatr Soc.</i> 2008 Aug;56(8):1434-41. Epub 2008 Jul 24.	abstract	full
430	Chen JC, Brunner RL, Ren H, Wassertheil-Smoller S, Larson JC, Levine DW, Allison M, Naughton MJ, Stefanick ML. Sleep duration and risk of ischemic stroke in postmenopausal women. <i>Stroke.</i> 2008 Dec;39(12):3185-92. Epub 2008 Jul 17.	abstract	full
492	Robinson JG, Wallace R, Limacher M, Ren H, Cochrane B, Wassertheil-Smoller S, Ockene JK, Blanchette PL, Ko MG. Cardiovascular risk in women with non-specific chest pain (from the Women's Health Initiative Hormone Trials). <i>Am J Cardiol.</i> 2008 Sep 15;102(6):693-9. Epub 2008 Jul 2.	abstract	full
339	Margolis KL, Lihong Qi, Brzyski R, Bonds DE, Howard BV, Kempainen S, Simin Liu, Robinson JG, Safford MM, Tinker LT, Phillips LS. Validity of diabetes self-reports in the Women's Health Initiative: comparison with medication inventories and fasting glucose measurements. <i>Clin Trials.</i> 2008;5(3):240-7.	abstract	full
845	Chlebowski RT. Colorectal cancer in women after stopping postmenopausal hormone therapy—reply. <i>JAMA.</i> 2008; 299(23):2744-5.	abstract	full
445	Bray PF, Larson JC, LaCroix AZ, Manson J, Limacher MC, Rossouw JE, Lasser NL, Lawson WE, Stefanick ML, Langer RD, Margolis KL; Women's Health Initiative Investigators. Usefulness of baseline lipids and C-reactive protein in women receiving menopausal hormone therapy as predictors of treatment-related coronary events. <i>Am J Cardiol.</i> 2008 Jun 1;101(11):1599-1605. Epub 2008 Apr 2.	abstract	full
594	Ma Y, Hébert JR, Li W, Bertone-Johnson ER, Olendzki B, Pagoto SL, Tinker L, Rosal MC, Ockene IS, Ockene JK, Griffith JA, Liu S. Association between dietary fiber and markers of systemic inflammation in the Women's Health Initiative Observational Study. <i>Nutrition.</i> 2008 Oct;24(10):941-9. Epub 2008 Jun 18.	abstract	full
549	Dai JY, LeBlanc M, Kooperberg C. Semiparametric estimation exploiting covariate independence in two-phase randomized trials. <i>Biometrics.</i> 2009 Mar;65(1):178-87. Epub 2008 May 13.	abstract	full
779	Van Horn L, Manson JE. The Women's Health Initiative: Implications for clinicians. <i>Cleve Clin J Med.</i> 2008 May;75(5):385-90.	abstract	full
503	Allison MA, Manson JE, Langer RD, Carr JJ, Rossouw JE, Pettinger MB, Phillips L, Cochrane BB, Eaton CB, Greenland P, Hendrix S, Hsia J, Hunt JR, Jackson RD, Johnson KC, Kuller LH, Robinson J; Women's Health Initiative and Women's Health Initiative Coronary Artery Calcium Study Investigators. Oophorectomy, hormone therapy, and subclinical coronary artery disease in women with hysterectomy: the Women's Health Initiative coronary artery calcium study. <i>Menopause.</i> 2008 Jul-Aug;15(4 Pt 1):639-47. Epub 2008 May 2.	abstract	full
631	Kabat GC, Kim M, Hunt JR, Chlebowski RT, Rohan TE. Body mass index and waist circumference in relation to lung cancer risk in the Women's Health Initiative. <i>Am J Epidemiol.</i> 2008 Jul 15;168(2):158-69. Epub 2008 May 15.	abstract	full
592	Bradley CS, Zimmerman MB, Wang Q, Nygaard IE; for the Women's Health Initiative. Vaginal descent and pelvic floor symptoms in postmenopausal women: A longitudinal study. <i>Obstet</i>	abstract	full

	Gynecol. 2008 May;111(5):1148-53.		
837	Prentice RL. Women's Health Initiative studies of postmenopausal breast cancer. <i>Adv Exp Med Biol.</i> 2008;617:151-60.	abstract	full
586	Rohan TE, Negassa A, Chlebowski RT, Habel L, McTiernan A, Ginsberg M, Wassertheil-Smoller S, Page DL. Conjugated equine estrogen and risk of benign proliferative breast disease: A randomized controlled trial. <i>J Natl Cancer Inst.</i> 2008 Apr 16;100(8):563-71. Epub 2008 Apr 8.	abstract	full
303	Lacroix AZ, Gray SL, Aragaki A, Cochrane BB, Newman AB, Kooperberg CL, Black H, Curb JD, Greenland P, Woods NF. Statin use and incident frailty in women aged 65 years or older: Prospective findings from the Women's Health Initiative Observational Study. <i>J Gerontol A Biol Sci Med Sci.</i> 2008 Apr;63(4):369-75.	abstract	full
514	Cui Y, Shikany JM, Liu S, Yasmeen S, Rohan TE. Selected antioxidants and risk of hormone receptor-defined invasive breast cancers among postmenopausal women in the Women's Health Initiative Observational Study. <i>Am J Clin Nutr.</i> 2008 Apr;87(4):1009-18.	abstract	full
459	Gunter MJ, Hoover DR, Yu H, Wassertheil-Smoller S, Manson JE, Li J, Harris TG, Rohan TE, Xue X, Ho GY, Einstein MH, Kaplan RC, Burk RD, Wylie-Rosett J, Pollak MN, Anderson G, Howard BV, Strickler HD. A prospective evaluation of insulin and insulin-like growth factor-I as risk factors for endometrial cancer. <i>Cancer Epidemiol Biomarkers Prev.</i> 2008 Apr;17(4):921-9.	abstract	full
635	Walitt BT, Constantinescu F, Katz JD, Weinstein A, Wang H, Hernandez RK, Hsia J, Howard BV. Validation of self-report of rheumatoid arthritis and systemic lupus erythematosus: The Women's Health Initiative. <i>J Rheumatol.</i> 2008 May;35(5):811-8. Epub 2008 Apr 1.	abstract	full
652	Brennan-Calanan RM, Genco RJ, Wilding GE, Hovey KM, Trevisan M, Wactawski-Wende J. Osteoporosis and oral infection: Independent risk factors for oral bone loss. <i>J Dent Res.</i> 2008 Apr;87(4):323-7.	abstract	full
825	Prentice RL, Chlebowski RT, Stefanick ML, Manson JE, Langer RD, Pettinger M, Hendrix SL, Hubbell FA, Kooperberg C, Kuller LH, Lane DS, McTiernan A, O'Sullivan MJ, Rossouw JE, Anderson GL. Conjugated equine estrogens and breast cancer risk in the Women's Health Initiative clinical trial and observational study. <i>Am J Epidemiol.</i> 2008 Jun 15;167(12):1407-15. Epub 2008 Apr 29.	abstract	full
536	McCall-Hosenfeld JS, Freund KM, Legault C, Jaramillo SA, Cochrane BB, Manson JE, Wenger NK, Eaton CB, McNeeley SG, Rodriguez BL, Bonds D. Sexual satisfaction and cardiovascular disease: The Women's Health Initiative. <i>Am J Med.</i> 2008 Apr;121(4):295-301.	abstract	full
464	Neuhouser ML, Tinker L, Shaw PA, Schoeller D, Bingham SA, Van Horn L, Beresford SAA, Caan B, Thomson C, Satterfield S, Kuller L, Heiss G, Smit E, Sarto G, Ockene J, Stefanick ML, Assaf A, Runswick S, Prentice RL. Use of recovery biomarkers to calibrate nutrient consumption self-reports in the Women's Health Initiative. <i>Am J Epidemiol.</i> 2008 May 15;167(10):1247-59. Epub 2008 Mar 15.	abstract	full
544	Cui Y, Page DL, Lane DS, Rohan TE. Menstrual and reproductive history, postmenopausal hormone use, and risk of benign proliferative epithelial disorders of the breast: A cohort study. <i>Breast Cancer Res Treat.</i> 2009 Mar;114(1):113-20. Epub 2008 Mar 22.	abstract	full
501	Heiss G, Wallace R, Anderson GL, Aragaki A, Beresford SA, Brzyski R, Chlebowski RT, Gass M, LaCroix A, Manson JE, Prentice RL, Rossouw J, Stefanick ML; WHI Investigators. Health risks and benefits 3 years after stopping randomized treatment with estrogen and progestin. <i>JAMA.</i> 2008 Mar 5;299(9):1036-45.	abstract	full
444	Moeller SM, Volland R, Tinker L, Blodi BA, Klein ML, Gehrs KM, Johnson EJ, Snodderly DM, Wallace RB, Chappell RJ, Parekh N, Ritenbaugh C, Mares JA; for the CAREDS Study Group. Associations between age-related nuclear cataract and lutein and zeaxanthin in the diet and serum in the Carotenoids in the Age-Related Eye Disease Study, an Ancillary Study of the Women's Health Initiative. <i>Arch Ophthalmol.</i> 2008 Mar;126(3):354-364.	abstract	full
481	Lee JS, Lacroix AZ, Wu L, Cauley JA, Jackson RD, Kooperberg C, Leboff MS, Robbins J, Lewis CE, Bauer DC, Cummings SR. Associations of serum sex hormone-binding globulin and sex hormone concentrations with hip fracture risk in postmenopausal women. <i>J Clin Endocrinol Metab.</i> 2008 May;93(5):1796-803. Epub 2008 Mar 11.	abstract	full
330	Zheng Z, Margolis KL, Liu S, Tinker LF, Ye W; Women's Health Initiative Investigators. Effects of estrogen with and without progestin and obesity on symptomatic gastroesophageal reflux. <i>Gastroenterology.</i> 2008 Jul;135(1):72-81. Epub 2008 Mar 25.	abstract	full
810	Prentice RL, Anderson GL. The Women's Health Initiative: Lessons learned. <i>Annu Rev Public Health.</i> 2008;29:131-50.	abstract	full

337	Prentice RL, Chlebowski RT, Stefanick ML, Manson JE, Pettinger M, Hendrix SL, Hubbell FA, Kooperberg C, Kuller LH, Lane DS, McTiernan A, O'Sullivan MJ, Rossouw JE, Anderson GL. Estrogen plus progestin therapy and breast cancer in recently postmenopausal women. <i>Am J Epidemiol.</i> 2008 May 15;167(10):1207-16. Epub 2008 Mar 27.	abstract	full
362	Walitt B, Pettinger M, Weinstein A, Katz J, Torner J, Wasko MC, Howard BV; Women's Health Initiative Investigators. Effects of postmenopausal hormone therapy on rheumatoid arthritis: The Women's Health Initiative randomized controlled trials. <i>Arthritis Rheum.</i> 2008 Mar 15;59(3):302-10. Epub 2008 Feb 28.	abstract	full
438	McGinn AP, Kaplan RC, Verghese J, Rosenbaum DM, Psaty BM, Baird AE, Lynch JK, Wolf PA, Kooperberg C, Larson JC, Wassertheil-Smoller S. Walking speed and risk of incident ischemic stroke among postmenopausal women. <i>Stroke.</i> 2008 Apr;39(4):1233-9. Epub 2008 Feb 21.	abstract	full
603	Wassertheil-Smoller S, Kooperberg C, McGinn AP, Kaplan RC, Hsia J, Hendrix SL, Manson JE, Berger JS, Kuller LH, Allison MA, Baird AE. Lipoprotein-associated phospholipase A2, hormone use, and the risk of ischemic stroke in postmenopausal women. <i>Hypertension.</i> 2008 Apr;51(4):1115-22. Epub 2008 Feb 7.	abstract	full
346	Chlebowski RT, Anderson G, Pettinger M, Lane D, Langer RD, Gillian MA, Walsh BW, Chen C, McTiernan A; for the Women's Health Initiative Investigators. Estrogen plus progestin and breast cancer detection by means of mammography and breast biopsy. <i>Arch Intern Med.</i> 2008 Feb 25;168(4):370-377.	abstract	full
774	Keith SW, Wang C, Fontaine KR, Cowan CD, Allison DB. BMI and headache among women: Results from 11 epidemiologic datasets. <i>Obesity (Silver Spring).</i> 2008 Feb;16(2):377-83.	abstract	full
318	Spangler L, Scholes D, Brunner RL, Robbins J, Reed SD, Newton KM, Melville JL, Lacroix AZ. Depressive symptoms, bone loss, and fractures in postmenopausal women. <i>J Gen Intern Med.</i> 2008 May;23(5):567-74. Epub 2008 Feb 20.	abstract	full
801	McGowan JA, Stefanick ML. Estrogen therapy: Prevention and treatment of osteoporosis. In: Marcus R et al, eds. <i>Osteoporosis.</i> 3rd ed. San Diego, CA: Elsevier Academic Press, 2008:1687-704.		
460	Gunter MJ, Hoover DR, Yu H, Wassertheil-Smoller S, Rohan TE, Manson JE, Howard BV, Wylie-Rosett J, Anderson GL, Ho GY, Kaplan RC, Li J, Xue X, Harris TG, Burk RD, Strickler HD. Insulin, insulin-like growth factor-I, endogenous estradiol, and risk of colorectal cancer in postmenopausal women. <i>Cancer Res.</i> 2008 Jan 1;68(1):329-37.	abstract	full
620	de Boer IH, Tinker LF, Connelly S, Curb JD, de Boer IH, Tinker LF, Connelly S, Curb JD, Howard BV, Kestenbaum B, Larson JC, Manson JE, Margolis KL, Siscovick DS, Weiss NS; Women's Health Initiative Investigators. Calcium plus vitamin D supplementation and the risk of incident diabetes in the Women's Health Initiative. <i>Diabetes Care.</i> 2008 Apr;31(4):701-7. Epub 2008 Jan 30.	abstract	full
554	Hsu Y, Niu T, Song Y, Tinker L, Kuller LH, Liu S. Genetic variants in the UCP2-UCP3 gene cluster and risk of diabetes in the Women's Health Initiative Observational Study. <i>Diabetes.</i> 2008 Apr;57(4):1101-7. Epub 2008 Jan 25.	abstract	full
731	Rossouw JE. Postmenopausal hormone therapy for disease prevention: Have we learned any lessons from the past? <i>Clin Pharmacol Ther.</i> 2008 Jan;83(1):14-6.	abstract	full
826	Jackson RD, Shidham S. The role of hormone therapy and calcium plus vitamin D for reduction of bone loss and risk for fractures: Lessons learned from the Women's Health Initiative. <i>Curr Osteoporos Rep.</i> 2007 Dec;5(4):153-9.	abstract	full
550	Song Y, You NC, Hsu YH, Sul J, Wang L, Tinker L, Eaton CB, Liu S. Common genetic variation in calpain-10 gene (CAPN10) and diabetes risk in a multi-ethnic cohort of American postmenopausal women. <i>Hum Mol Genet.</i> 2007 Dec 1;16(23):2960-71. Epub 2007 Sep 12.	abstract	full
772	Prentice RL. Observational studies, clinical trials, and the Women's Health Initiative. <i>Lifetime Data Anal.</i> 2007 Dec;13(4):449-62. Epub 2007 Oct 18.	abstract	full
715	Gail MH, Costantino JP, Pee D, Bondy M, Newman L, Selvan M, Anderson GL, Malone KE, Marchbanks PA, McCaskill-Stevens W, Norman SA, Simon MS, Spirtas R, Ursin G, Bernstein L. Projecting individualized absolute invasive breast cancer risk in African American women. <i>J Natl Cancer Inst.</i> 2007 Dec 5;99(23):1782-92. Epub 2007 Nov 27.	abstract	full
456	Chen Z, Wang Z, Lohman T, Heymsfield SB, Outwater E, Nicholas JS, Bassford T, LaCroix A, Sherrill D, Punyanitya M, Wu G, Going S. Dual-energy X-ray absorptiometry is a valid tool for assessing skeletal muscle mass in older women. <i>J Nutr.</i> 2007 Dec;137(12):2775-80.	abstract	full

394	Paskett ED, Reeves KW, Rohan TE, Allison MA, Williams CD, Messina CR, Whitlock E, Sato A, Hunt JR. Association between cigarette smoking and colorectal cancer in the Women's Health Initiative. <i>J Natl Cancer Inst.</i> 2007 Nov 21;99(22):1729-35. Epub 2007 Nov 13.	abstract	full
372	Robbins J, Aragaki AK, Kooperberg C, Watts N, Wactawski-Wende J, Jackson RD, LeBoff MS, Lewis CE, Chen Z, Stefanick ML, Cauley J. Factors associated with 5-year risk of hip fracture in postmenopausal women. <i>JAMA.</i> 2007 Nov 28;298(20):2389-98.	abstract	full
176	Chlebowski RT, Anderson GL, Lane DS, Aragaki AK, Rohan T, Yasmeen S, Sarto G, Rosenberg CA, Hubbell FA, For The Women's Health Initiative Investigators. Predicting risk of breast cancer in postmenopausal women by hormone receptor status. <i>J Natl Cancer Inst.</i> 2007 Nov 21;99(22):1695-705. Epub 2007 Nov 13.	abstract	full
409	Cauley JA, Wu L, Wampler NS, Barnhart JM, Allison M, Chen Z, Jackson R, Robbins J. Clinical risk factors for fractures in multi-ethnic women: The Women's Health Initiative. <i>J Bone Miner Res.</i> 2007 Nov;22(11):1816-26.	abstract	full
632	Brennan RM, Genco RJ, Hovey KM, Trevisan M, Wactawski-Wende J. Clinical attachment loss, systemic bone density, and subgingival calculus in postmenopausal women. <i>J Periodontol.</i> 2007 Nov;78(11):2104-11.	abstract	full
773	Wenger NK. Do diet, folic acid, and vitamins matter? What did we learn from the Women's Health Initiative, the Women's Health Study, the Women's Antioxidant and Folic Acid Cardiovascular Study, and other clinical trials? <i>Cardiol Rev.</i> 2007 Nov-Dec;15(6):288-90.	abstract	full
316	Abel EL, Hendrix SO, McNeeley SG, Johnson KC, Rosenberg CA, Mossavar-Rahmani Y, Vitolins M, Kruger M. Daily coffee consumption and prevalence of nonmelanoma skin cancer in Caucasian women. <i>Eur J Cancer Prev.</i> 2007 Oct;16(5):446-452.	abstract	full
352	Luo J, Margolis KL, Adami HO, Lopez AM, Lessin L, Ye W; for the Women's Health Initiative Investigators. Body size, weight cycling, and risk of renal cell carcinoma among postmenopausal women: The Women's Health Initiative (United States). <i>Am J Epidemiol.</i> 2007 Oct 1;166(7):752-9. Epub 2007 Jul 5.	abstract	full
771	Johnson SR. The Women's Health Initiative and hormone therapy, 5 years later. <i>Cleve Clin J Med.</i> 2007 Oct;74(10):755-6.	abstract	full
493	Smoller JW, Pollack MH, Wassertheil-Smoller S, Jackson RD, Oberman, A, Wong, ND, Sheps D. Panic attacks and risk of incident cardiovascular events among postmenopausal women in the Women's Health Initiative observational study. <i>Arch Gen Psychiatry.</i> 2007 Oct;64(10):1153-60.	abstract	full
469	Prentice RL, Thomson CA, Caan B, Hubbell FA, Anderson GL, Beresford SAA, Pettinger M, Lane DS, Lessin L, Yasmeen S, Singh B, Khandekar J, Shikany JM, Satterfield S, Chlebowski RT. Low-fat dietary pattern and cancer incidence in the Women's Health Initiative Dietary Modification Randomized Controlled Trial. <i>J Natl Cancer Inst.</i> 2007 Oct 17;99(20):1534-43. Epub 2007 Oct 9.	abstract	full
483	Michaud DS, Wolpin B, Giovannucci E, Liu S, Cochrane B, Manson JE, Pollak MN, Ma J, Fuchs CS. Prediagnostic plasma C-peptide and pancreatic cancer risk in men and women. <i>Cancer Epidemiol Biomarkers Prev.</i> 2007 Oct;16(10):2101-9. Epub 2007 Sep 28.	abstract	full
787	Manson JE & Bassuk SS. Menopausal hormone therapy and the risk of coronary heart disease. Does the relation vary by age or time since menopause? The investigator's perspective. <i>The Monitor.</i> 2007 Oct:17-22.		full
452	Larowe TL, Mares JA, Snodderly DM, Klein ML, Wooten BR, Chappell R; CAREDS Macular Pigment Study Group. Macular pigment density and age-related maculopathy in the Carotenoids in Age-Related Eye Disease Study. An ancillary study of the Women's Health Initiative. <i>Ophthalmology.</i> 2008 May;115(5):876-883.e1. Epub 2007 Sep 14.	abstract	full
770	Manson JE, Bassuk SS. Invited commentary: hormone therapy and risk of coronary heart disease - why renew the focus on the early years of menopause? <i>Am J Epidemiol.</i> 2007 Sep 1;166(5):511-7. Epub 2007 Jul 23.	abstract	full
508	Cui Y, Page DL, Chlebowski RT, Beresford SA, Hendrix SL, Lane DS, Rohan TE. Alcohol and folate consumption and risk of benign proliferative epithelial disorders of the breast. <i>Int J Cancer.</i> 2007 Sep 15;121(6):1346-51.	abstract	full
769	Bush TM, Bonomi AE, Nekhlyudov L, Ludman EJ, Reed SD, Connelly MT, Grothaus LC, LaCroix AZ, Newton KM. How the Women's Health Initiative (WHI) influenced physicians' practice and attitudes. <i>J Gen Intern Med.</i> 2007 Sep;22(9):1311-6. Epub 2007 Jul 18.	abstract	full
328	Margolis KL, Rodabough RJ, Thomson CA, Lopez AM, McTiernan A; for the Women's Health	abstract	full

	Initiative Research Group. Prospective study of leukocyte count as a predictor of incident breast, colorectal, endometrial, and lung cancer and mortality in postmenopausal women. Arch Intern Med. 2007 Sep 24;167(17):1837-44.		
369	Liu S, Tinker L, Song Y, Rifai N, Bonds DE, Cook NR, Heiss G, Howard BV, Hotamisligil GS, Hu FB, Kuller LH, Manson JE. A prospective study of inflammatory cytokines and diabetes mellitus in a multiethnic cohort of postmenopausal women. Arch Intern Med. 2007 Aug 13-27;167(15):1676-85.	abstract	full
527	McLeod KM, McCann SE, Horvath PJ, Wactawski-Wende J. Predictors of change in calcium intake in postmenopausal women after osteoporosis screening. J Nutr. 2007 Aug;137(8):1968-73.	abstract	full
576	Wolpin BM, Michaud DS, Giovannucci EL, Schernhammer ES, Stampfer MJ, Manson JE, Cochrane BB, Rohan TE, Ma J, Pollak MN, Fuchs CS. Circulating insulin-like growth factor binding protein-1 and the risk of pancreatic cancer. Cancer Res. 2007 Aug 15;67(16):7923-8.	abstract	full
428	Pal L, Hailpern SM, Santoro NF, Freeman R, Barad D, Kipersztok S, Barnabei VM, Wassertheil-Smoller S. Association of pelvic organ prolapse and fractures in postmenopausal women: Analysis of baseline data from the Women's Health Initiative Estrogen Plus Progestin trial. Menopause. 2008 Jan-Feb;15(1):59-66.	abstract	full
376	Song Y, Manson JE, Tinker L, Rifai N, Cook NR, Hu FB, Hotamisligil GS, Ridker PM, Rodriguez BL, Margolis KL, Oberman A, Liu S. Circulating levels of endothelial adhesion molecules and risk of diabetes in an ethnically diverse cohort of women. Diabetes. 2007 Jul;56(7):1898-904. Epub 2007 Mar 27.	abstract	full
440	Anderson GL, Kooperberg C, Geller N, Rossouw JE, Pettinger M, Prentice RL. Monitoring and reporting of the Women's Health Initiative randomized hormone therapy trials. Clin Trials. 2007;4(3):207-17.	abstract	full
196	Tinker LF, Rosal MC, Young AF, Perri MG, Patterson RE, Van Horn L, Assaf AR, Bowen DJ, Ockene J, Hays J, Wu L. Predictors of dietary change and maintenance in the Women's Health Initiative Dietary Modification Trial. J Am Diet Assoc. 2007 Jul;107(7):1155-65.	abstract	full
486	Song Y, Manson JE, Tinker L, Howard BV, Kuller LH, Nathan L, Rifai N, Liu S. Insulin sensitivity and insulin secretion determined by homeostasis model assessment and risk of diabetes in a multiethnic cohort of women: The Women's Health Initiative Observational Study. Diabetes Care. 2007 Jul;30(7):1747-52. Epub 2007 Apr 27.	abstract	full
484	Wolpin BM, Michaud DS, Giovannucci EL, Schernhammer ES, Stampfer MJ, Manson JE, Cochrane BB, Rohan TE, Ma J, Pollak MN, Fuchs CS. Circulating insulin-like growth factor axis and the risk of pancreatic cancer in four prospective cohorts. Br J Cancer. 2007 Jul 2;97(1):98-104. Epub 2007 May 29.	abstract	full
506	Manson JE, Allison MA, Rossouw JE, Carr JJ, Langer RD, Hsia J, Kuller LH, Cochrane BB, Hunt JR, Ludlam SE, Pettinger MB, Gass M, Margolis KL, Nathan L, Ockene JK, Prentice RL, Robbins J, Stefanick ML; WHI and WHI-CACS Investigators. Estrogen therapy and coronary-artery calcification. N Engl J Med. 2007 Jun 21;356(25):2591-602.	abstract	full
429	Kooperberg C, Cushman M, Hsia J, Robinson J, Aragaki A, Lynch J, Baird A, Johnson K, Kuller L, Beresford S, Rodriguez B. Can biomarkers identify women at increased stroke risk? The Women's Health Initiative hormone trials. PLoS Clin Trials 2007; 2(6): e28.	abstract	full
482	Schernhammer E, Wolpin B, Rifai N, Cochrane B, Manson JA, Ma J, Giovannucci E, Thomson C, Stampfer MJ, Fuchs C. Plasma folate, vitamin B6, vitamin B12, and homocysteine and pancreatic cancer risk in four large cohorts. Cancer Res. 2007 Jun 1;67(11):5553-60.	abstract	full
813	Brennan RM, Genco RJ, Wilding GE, Hovey KM, Trevisan M, Wactawski-Wende J. Bacterial species in subgingival plaque and oral bone loss in postmenopausal women. J Periodontol. 2007 Jun;78(6):1051-61.	abstract	full
230	Abel EL, Hendrix SL, McNeeley GS, O'Leary ES, Mossavar-Rahmani Y, Johnson SR, Kruger M. Use of electric blankets and association with prevalence of endometrial cancer. Eur J Cancer Prev. 2007 Jun;16(3):243-50.	abstract	full
441	Caan B, Neuhauser M, Aragaki A, Lewis CB, Jackson R, LeBoff MS, Margolis KL, Powell L, Uwaifo G, Whitlock E, Wylie-Rosett J, LaCroix A. Calcium plus vitamin D supplementation and the risk of postmenopausal weight gain. Arch Intern Med. 2007 May 14;167(9):893-902.	abstract	full
509	Cui Y, Page DL, Chlebowski RT, Hsia J, Allan Hubbell F, Johnson KC, Rohan TE. Cigarette smoking and risk of benign proliferative epithelial disorders of the breast in the Women's Health Initiative. Cancer Causes Control. 2007 May;18(4):431-8. Epub 2007 Feb 24.	abstract	full

542	Jaramillo SA, Felton D, Andrews L, Desiderio L, Hallarn RK, Jackson SD, Coker LH, Robinson JG, Ockene JK, Espeland MA; Women's Health Initiative Memory Study Research Group. Enrollment in a brain magnetic resonance study: results from the Women's Health Initiative Memory Study Magnetic Resonance Imaging Study (WHIMS-MRI). <i>Acad Radiol</i> . 2007 May;14(5):603-12.	abstract	full
20	McTiernan A, Wu L, Barnabei VM, Chen C, Hendrix S, Modugno F, Rohan T, Stanczyk FZ, Wang CY; For the WHI Investigators. Relation of demographic factors, menstrual history, reproduction and medication use to sex hormone levels in postmenopausal women. <i>Breast Cancer Res Treat</i> . 2008 Mar;108(2):217-231. Epub 2007 May 22.	abstract	full
495	Bradley CS, Zimmerman MB, Qi Y, Nygaard IE. Natural history of pelvic organ prolapse in postmenopausal women. <i>Obstet Gynecol</i> . 2007 Apr;109(4):848-54.	abstract	full
768	Ravdin PM, Cronin KA, Howlander N, Berg CD, Chlebowski RT, Feuer EJ, Edwards BK, Berry DA. The decrease in breast-cancer incidence in 2003 in the United States. <i>N Engl J Med</i> . 2007 Apr 19;356(16):1670-4.	abstract	full
322	Rossouw JE, Prentice RL, Manson JE, Wu L, Barad D, Barnabei VM, Ko M, LaCroix AZ, Margolis KL, Stefanick ML. Postmenopausal hormone therapy and risk of cardiovascular disease by age and years since menopause. <i>JAMA</i> . 2007 Apr 4;297(13):1465-77.	abstract	full
767	Howard BV. Dietary fat and cardiovascular disease: Putting the Women's Health Initiative in perspective. <i>Nutr Metab Cardiovasc Dis</i> . 2007 Mar;17(3):171-4. Epub 2007 Feb 21.	abstract	full
387	Denes P, Larson JC, Lloyd-Jones DM, Prineas RJ, Greenland P. Major and minor ECG abnormalities in asymptomatic women and risk of cardiovascular events and mortality. <i>JAMA</i> . 2007 Mar 7;297(9):978-85.	abstract	full
418	Gorfine M, Lipshtat N, Freedman LS, Prentice RL. Linear measurement error models with restricted sampling. <i>Biometrics</i> . 2007 Mar;63(1):137-42.	abstract	full
253	Klein R, Deng Y, Klein BE, Hyman L, Seddon J, Frank RN, Wallace RB, Hendrix SL, Kuppermann BD, Langer RD, Kuller L, Brunner R, Johnson KC, Thomas AM, Haan M. Cardiovascular disease, its risk factors and treatment, and age-related macular degeneration: Women's Health Initiative Sight Exam ancillary study. <i>Am J Ophthalmol</i> . 2007 Mar;143(3):473-83. Epub 2007 Jan 10.	abstract	full
471	Hsia J, Heiss G, Ren H, Allison M, Dolan NC, Greenland P, Heckbert SR, Johnson KC, Manson JE, Sidney S, Trevisan M, Women's Health Initiative Investigators. Calcium/vitamin D supplementation and cardiovascular events. <i>Circulation</i>. 2007 Feb 20;115(7):846-54.	abstract	full
363	Miller KA, Siscovick DS, Sheppard L, Shepherd K, Sullivan JH, Anderson GL, Kaufman JD. Long-term exposure to air pollution and incidence of cardiovascular events in women. <i>N Engl J Med</i> . 2007 Feb 1;356(5):447-58.	abstract	full
414	Hsia J, Margolis KL, Eaton CB, Wenger NK, Allison M, Wu L, LaCroix AZ, Black HR, Women's Health Initiative Investigators. Prehypertension and cardiovascular disease risk in the Women's Health Initiative. <i>Circulation</i> . 2007 Feb 20;115(7):855-60.	abstract	full
421	Dunn JE, Weintraub S, Stoddard AM, Banks S. Serum alpha-tocopherol, concurrent and past vitamin E intake, and mild cognitive impairment. <i>Neurology</i> . 2007 Feb 27;68(9):670-6.	abstract	full
764	Manson JE, Bassuk SS. Hot flashes and hormones. <i>Newsweek</i> . 2007 Jan 15;149(3):56-7.	abstract	
788	Allison MA, Manson JE. Hormone replacement therapy. In: <i>Encyclopedia of Epidemiology</i> . Thousand Oaks, CA: Sage Publications, 2007:503-10.		
344	Robinson JG, Wallace R, Limacher M, Sato A, Cochrane B, Wassertheil-Smoller S, Ockene JK, Blanchette PL, Ko MG. Elderly women diagnosed with nonspecific chest pain may be at increased cardiovascular risk. <i>J Womens Health (Larchmt)</i> . 2006 Dec;15(10):1151-60.	abstract	full
341	Gold R, Michael YL, Whitlock EP, Hubbell FA, Mason ED, Rodriguez BL, Safford MM, Sarto GE. Race/ethnicity, socioeconomic status, and lifetime morbidity burden in the Women's Health Initiative: A cross-sectional analysis. <i>J Womens Health (Larchmt)</i> . 2006 Dec;15(10):1161-73.	abstract	full
307	Mares JA, LaRowe TL, Snodderly DM, Moeller SM, Gruber MJ, Klein ML, Wooten BR, Johnson EJ, Chappell RJ; CAREDS Macular Pigment Study Group and Investigators. Predictors of optical density of lutein and zeaxanthin in retinas of older women in the Carotenoids in Age-Related Eye Disease Study, an ancillary study of the Women's Health Initiative. <i>Am J Clin Nutr</i> . 2006 Nov;84(5):1107-22.	abstract	full
183	Smoller JW, Pollack MH, Wassertheil-Smoller S, Brunner R, Curb D, Torner J, Oberman A,	abstract	full

	Hendrix SL, Hsia J, Sheps DS. Panic attacks, daily life ischemia, and chest pain in postmenopausal women. <i>Psychosom Med</i> . 2006 Nov-Dec;68(6):824-32. Epub 2006 Nov 13.		
765	Rossouw JE. Implications of recent clinical trials of postmenopausal hormone therapy for management of cardiovascular disease. <i>Ann N Y Acad Sci</i> . 2006 Nov;1089:444-53.	abstract	full
361	Cirillo DJ, Wallace RB, Wu L, Yood RA. Effect of hormone therapy on risk of hip and knee joint replacement in the Women's Health Initiative. <i>Arthritis Rheum</i> . 2006 Oct;54(10):3194-204.	abstract	full
763	Nabel EG. The Women's Health Initiative, <i>Science</i> . 2006 Sep 22;313(5794):1703.	abstract	full
287	Anderson GL, Chlebowski RT, Rossouw JE, Rodabough RJ, McTiernan A, Margolis KL, Aggerwal A, David Curb J, Hendrix SL, Allan Hubbell F, Khandekar J, Lane DS, Lasser N, Lopez AM, Potter J, Ritenbaugh C. Prior hormone therapy and breast cancer risk in the Women's Health Initiative randomized trial of estrogen plus progestin. <i>Maturitas</i> . 2006 Sep 20;55(2):103-15. Epub 2006 Jul 11.	abstract	full
415	Liao D, Pequet DJ, Duan Y, Whitsel EA, Dou J, Smith RL, Lin HM, Chen JC, Heiss G. GIS approaches for the estimation of residential-level ambient PM concentrations. <i>Environ Health Perspect</i> . 2006 Sep;114(9):1374-80.	abstract	full
417	Hsia J, Manson JE, Kuller L, Pettinger M, Choe JH, Langer RD, Limacher M, Oberman A, Ockene J, O'Sullivan MJ, Robinson JG. Impact of cyclooxygenase inhibitors in the Women's Health Initiative Hormone Trials: Secondary analysis of a randomized trial. <i>PLoS Clin Trials</i> . 2006 Sep 29;1(5):e26.	abstract	full
359	Bonds DE, Larson JC, Schwartz AV, Strotmeyer ES, Robbins J, Rodriguez BL, Johnson KC, Margolis KL. Risk of fracture in women with type 2 diabetes: The Women's Health Initiative Observational Study. <i>J Clin Endocrinol Metab</i> . 2006 Sep;91(9):3404-10. Epub 2006 Jun 27.	abstract	full
298	Allison M, Garland C, Chlebowski R, Criqui M, Langer R, Wu L, Roy H, McTiernan A, Kuller L, Women's Health Initiative Investigators. The association between aspirin use and the incidence of colorectal cancer in women. <i>Am J Epidemiol</i> . 2006 Sep 15;164(6):567-75. Epub 2006 Jul 17.	abstract	full
280	McTiernan A, Wu L, Chen C, Chlebowski R, Mossavar-Rahmani Y, Modugno F, Perri MG, Stanczyk FZ, Van Horn L, Wang CY, Women's Health Initiative Investigators. Relation of BMI and physical activity to sex hormones in postmenopausal women. <i>Obesity (Silver Spring)</i> . 2006 Sep;14(9):1662-77.	abstract	full
371	Moeller SM, Parekh N, Tinker L, Ritenbaugh C, Blodi B, Wallace RB, Mares JA, CAREDS Research Study Group. Associations between intermediate age-related macular degeneration and lutein and zeaxanthin in the carotenoids in age-related eye disease study (CAREDS): Ancillary study of the Women's Health Initiative. <i>Arch Ophthalmol</i> . 2006 Aug;124(8):1151-62.	abstract	full
148	Yasmeen S, Romano PS, Pettinger M, Johnson SR, Hubbell FA, Lane DS, Hendrix SL. Incidence of cervical cytological abnormalities with aging in the Women's Health Initiative: A randomized controlled trial. <i>Obstet Gynecol</i> . 2006 Aug;108(2):410-9.	abstract	full
504	Freedman LS, Potischman N, Kipnis V, Midthune D, Schatzkin A, Thompson FE, Troiano RP, Prentice R, Patterson R, Carroll R, Subar AF. A comparison of two dietary instruments for evaluating the fat-breast cancer relationship. <i>Int J Epidemiol</i> . 2006 Aug;35(4):1011-21. Epub 2006 May 3.	abstract	full
342	Robbins J, Schott AM, Azari R, Kronmal R. Body mass index is not a good predictor of bone density: results from WHI, CHS, and EPIDOS. <i>J Clin Densitom</i> . 2006 Jul-Sep;9(3):329-34.	abstract	full
388	Whitsel EA, Quibrera PM, Smith RL, Catellier DJ, Liao D, Henley AC, Heiss G. Accuracy of commercial geocoding: Assessment and implications. <i>Epidemiol Perspect Innov</i> . 2006 Jul 20;3:8.	abstract	full
373	Hsia J, Criqui MH, Herrington DM, Manson JE, Wu L, Heckbert SR, Allison M, McDermott MM, Robinson J, Masaki K, Women's Health Initiative Research Group. Conjugated equine estrogens and peripheral arterial disease risk: The Women's Health Initiative. <i>Am Heart J</i> . 2006 Jul;152(1):170-6.	abstract	full
758	Prentice RL, Qi L. Aspects of the design and analysis of high-dimensional SNP studies for disease risk estimation. <i>Biostatistics</i> . 2006 Jul;7(3):339-54. Epub 2006 Jan 27.	abstract	full
803	Stefanick ML. Risk-benefit profiles of raloxifene for women. <i>N Engl J Med</i> . 2006 Jul 13;355(2):190-2.	abstract	full
250	Haan MN, Klein R, Klein BE, Deng Y, Blythe LK, Seddon JM, Musch DC, Kuller LH, Hyman LG, Wallace RB. Hormone therapy and age-related macular degeneration: the Women's Health Initiative Sight Exam Study. <i>Arch Ophthalmol</i> . 2006 Jul;124(7):988-92.	abstract	full

324	McTigue K, Larson JC, Valoski A, Burke G, Kotchen J, Lewis CE, Stefanick ML, Van Horn L, Kuller L. Mortality and cardiac and vascular outcomes in extremely obese women. <i>JAMA</i> . 2006 Jul 5;296(1):79-86.	abstract	full
761	Willett WC, Manson JE, Grodstein F, Stampfer MJ, Colditz GA. Re: "combined postmenopausal hormone therapy and cardiovascular disease: toward resolving the discrepancy between observational studies and the women's health initiative clinical trial". <i>Am J Epidemiol</i> . 2006 Jun 1;163(11):1067-8; author reply 1068-9. Epub 2006 Apr 26.	abstract	full
385	Neuhouser ML, Tinker LF, Thomson C, Caan B, Horn LV, Snetselaar L, Parker LM, Patterson RE, Robinson-O'Brien R, Beresford SA, Shikany JM. Development of a glycemic index database for food frequency questionnaires used in epidemiologic studies. <i>J Nutr</i> . 2006 Jun;136(6):1604-9.	abstract	full
802	Barad DH, Stefanick ML, Manson JE, Gass M, Anderson GL. Reply: Reanalysis of the data--science at its best and always informative. <i>Fertil Steril</i> . 2006 June;85(6): author reply e14. Epub 2006 May 4.	abstract	full
354	Jackson RD, Wactawski-Wende J, LaCroix AZ, Pettinger M, Yood RA, Watts NB, Robbins JA, Lewis CE, Beresford SA, Ko MG, Naughton MJ, Satterfield S, Bassford T, Women's Health Initiative Investigators. Effects of conjugated equine estrogen on risk of fractures and BMD in postmenopausal women with hysterectomy: Results from the Women's Health Initiative randomized trial. <i>J Bone Miner Res</i> . 2006 Jun;21(6):817-28.	abstract	full
378	Michael YL, Wisdom JP, Perrin N, Bowen D, Cochrane BB, Brzyski R, Ritenbaugh C. Expression and ambivalence over expression of negative emotion: Cross-sectional associations with psychosocial factors and health-related quality of life in postmenopausal women. <i>J Women Aging</i> . 2006;18(2):25-40.	abstract	full
325	Espeland MA, Coker LH, Wallace R, Rapp SR, Resnick SM, Limacher M, Powell LH, Messina CR, Women's Health Initiative Study of Cognitive Aging. Association between alcohol intake and domain-specific cognitive function in older women. <i>Neuroepidemiology</i> . 2006;27(1):1-12. Epub 2006 May 24.	abstract	full
216	Resnick SM, Maki PM, Rapp SR, Espeland MA, Brunner R, Coker LH, Granek IA, Hogan P, Ockene JK, Shumaker SA, Women's Health Initiative Study of Cognitive Aging Investigators. Effects of combination estrogen plus progestin hormone treatment on cognition and affect. <i>J Clin Endocrinol Metab</i> . 2006 May;91(5):1802-10. Epub 2006 Mar 7.	abstract	full
347	Hendrix SL, Wassertheil-Smoller S, Johnson KC, Howard BV, Kooperberg C, Rossouw JE, Trevisan M, Aragaki A, Baird AE, Bray PF, Buring JE, Criqui MH, Herrington D, Lynch JK, Rapp SR, Torner J, WHI Investigators. Effects of conjugated equine estrogen on stroke in the Women's Health Initiative. <i>Circulation</i> . 2006 May 23;113(20):2425-34. Epub 2006 May 15.	abstract	full
174	Cauley JA, McTiernan A, Rodabough RJ, LaCroix A, Bauer DC, Margolis KL, Paskett ED, Vitolins MZ, Furberg CD, Chlebowski RT, Women's Health Initiative Research Group. Statin use and breast cancer: Prospective results from the Women's Health Initiative. <i>J Natl Cancer Inst</i> . 2006 May 17;98(10):700-7.	abstract	full
370	Espeland MA, Rapp SR, Robertson J, Granek I, Murphy C, Albert M, Bassford T. Benchmarks for designing two-stage studies using modified mini-mental state examinations: Experience from the Women's Health Initiative Memory Study. <i>Clin Trials</i> . 2006;3(2):99-106.	abstract	full
762	Manson JE, Bassuk SS. Is estrogen for you? <i>Newsweek</i> . 2006 Apr 24;147(17):72-3.	abstract	
350	Curb JD, Prentice RL, Bray PF, Langer RD, Van Horn L, Barnabei VM, Bloch MJ, Cyr MG, Gass M, Lepine L, Rodabough RJ, Sidney S, Uwaifo GI, Rosendaal FR. Venous thrombosis and conjugated equine estrogen in women without a uterus. <i>Arch Intern Med</i> . 2006 Apr 10;166(7):772-80.	abstract	full
343	Stefanick ML, Anderson GL, Margolis KL, Hendrix SL, Rodabough RJ, Paskett ED, Lane DS, Hubbell FA, Assaf AR, Sarto GE, Schenken RS, Yasmeeen S, Lessin L, Chlebowski RT, WHI Investigators. Effects of conjugated equine estrogens on breast cancer and mammography screening in postmenopausal women with hysterectomy. <i>JAMA</i> . 2006 Apr 12;295(14):1647-57.	abstract	full
423	Prentice RL, Langer RD, Stefanick ML, Howard BV, Pettinger M, Anderson GL, Barad D, Curb JD, Kotchen J, Kuller L, Limacher M, Wactawski-Wende J, Women's Health Initiative Investigators. Combined analysis of Women's Health Initiative observational and clinical trial data on postmenopausal hormone treatment and cardiovascular disease. <i>Am J Epidemiol</i> . 2006 Apr 1;163(7):589-99. Epub 2006 Feb 16.	abstract	full
201	Rautaharju PM, Prineas RJ, Kadish A, Larson JC, Hsia J, Lund B. Normal standards for QT and QT subintervals derived from a large ethnically diverse population of women aged 50 to 79	abstract	full

	years (The Women's Health Initiative [WHI]). <i>Am J Cardiol.</i> 2006 Mar 1;97(5):730-7. Epub 2006 Jan 11.		
209	Modugno F, Kip KE, Cochrane B, Kuller L, Klug TL, Rohan TE, Chlebowski RT, Lasser N, Stefanick ML. Obesity, hormone therapy, estrogen metabolism and risk of postmenopausal breast cancer. <i>Int J Cancer.</i> 2006 Mar 1;118(5):1292-301.	abstract	full
357	Bonds DE, Lasser N, Qi L, Brzyski R, Caan B, Heiss G, Limacher MC, Liu JH, Mason E, Oberman A, O'Sullivan MJ, Phillips LS, Prineas RJ, Tinker L. The effect of conjugated equine oestrogen on diabetes incidence: The Women's Health Initiative randomised trial. <i>Diabetologia.</i> 2006 Mar;49(3):459-68. Epub 2006 Jan 27.	abstract	full
190	Oberman A, Prineas RJ, Larson JC, LaCroix A, Lasser NL. Prevalence and determinants of electrocardiographic left ventricular hypertrophy among a multiethnic population of postmenopausal women (The Women's Health Initiative). <i>Am J Cardiol.</i> 2006 Feb 15;97(4):512-9. Epub 2006 Jan 4.	abstract	full
289	Rosenberg CA, Khandekar J, Greenland P, Rodabough RJ, McTiernan A. Cutaneous melanoma in postmenopausal women after nonmelanoma skin carcinoma: The Women's Health Initiative Observational Study. <i>Cancer.</i> 2006 Feb 1;106(3):654-63.	abstract	full
345	Hsia J, Langer RD, Manson JE, Kuller L, Johnson KC, Hendrix SL, Pettinger M, Heckbert SR, Greep N, Crawford S, Eaton CB, Kostis JB, Caralis P, Prentice R, Women's Health Initiative Investigators. Conjugated equine estrogens and coronary heart disease: The Women's Health Initiative. <i>Arch Intern Med.</i> 2006 Feb 13;166(3):357-65.	abstract	full
447	Howard BV, Van Horn L, Hsia J, Manson JE, Stefanick ML, Wassertheil-Smoller S, Kuller LH, LaCroix AZ, Langer RD, Lasser NL, Lewis CE, Limacher MC, Margolis KL, Mysiw WJ, Ockene JK, Parker LM, Perri MG, Phillips L, Prentice RL, Robbins J, Rossouw JE, Sarto GE, Schatz IJ, Snetselaar LG, Stevens VJ, Tinker LF, Trevisan M, Vitolins MZ, Anderson GL, Assaf AR, Bassford T, Beresford SA, Black HR, Brunner RL, Brzyski RG, Caan B, Chlebowski RT, Gass M, Granek I, Greenland P, Hays J, Heber D, Heiss G, Hendrix SL, Hubbell FA, Johnson KC, Kotchen JM. Low-fat dietary pattern and risk of cardiovascular disease: The Women's Health Initiative Randomized Controlled Dietary Modification Trial. <i>JAMA.</i> 2006 Feb 8;295(6):655-66.	abstract	full
448	Prentice RL, Caan B, Chlebowski RT, Patterson R, Kuller LH, Ockene JK, Margolis KL, Limacher MC, Manson JE, Parker LM, Paskett E, Phillips L, Robbins J, Rossouw JE, Sarto GE, Shikany JM, Stefanick ML, Thomson CA, Van Horn L, Vitolins MZ, Wactawski-Wende J, Wallace RB, Wassertheil-Smoller S, Whitlock E, Yano K, Adams-Campbell L, Anderson GL, Assaf AR, Beresford SA, Black HR, Brunner RL, Brzyski RG, Ford L, Gass M, Hays J, Heber D, Heiss G, Hendrix SL, Hsia J, Hubbell FA, Jackson RD, Johnson KC, Kotchen JM, LaCroix AZ, Lane DS, Langer RD, Lasser NL, Henderson MM. Low-fat dietary pattern and risk of invasive breast cancer: The Women's Health Initiative Randomized Controlled Dietary Modification Trial. <i>JAMA.</i> 2006 Feb 8;295(6):629-42.	abstract	full
449	Beresford SA, Johnson KC, Ritenbaugh C, Lasser NL, Snetselaar LG, Black HR, Anderson GL, Assaf AR, Bassford T, Bowen D, Brunner RL, Brzyski RG, Caan B, Chlebowski RT, Gass M, Harrigan RC, Hays J, Heber D, Heiss G, Hendrix SL, Howard BV, Hsia J, Hubbell FA, Jackson RD, Kotchen JM, Kuller LH, LaCroix AZ, Lane DS, Langer RD, Lewis CE, Manson JE, Margolis KL, Mossavar-Rahmani Y, Ockene JK, Parker LM, Perri MG, Phillips L, Prentice RL, Robbins J, Rossouw JE, Sarto GE, Stefanick ML, Van Horn L, Vitolins MZ, Wactawski-Wende J, Wallace RB, Whitlock E. Low-fat dietary pattern and risk of colorectal cancer: The Women's Health Initiative Randomized Controlled Dietary Modification Trial. <i>JAMA.</i> 2006 Feb 8;295(6):643-54.	abstract	full
450	Jackson RD, LaCroix AZ, Gass M, Wallace RB, Robbins J, Lewis CE, Bassford T, Beresford SA, Black HR, Blanchette P, Bonds DE, Brunner RL, Brzyski RG, Caan B, Cauley JA, Chlebowski RT, Cummings SR, Granek I, Hays J, Heiss G, Hendrix SL, Howard BV, Hsia J, Hubbell FA, Johnson KC, Judd H, Kotchen JM, Kuller LH, Langer RD, Lasser NL, Limacher MC, Ludlam S, Manson JE, Margolis KL, McGowan J, Ockene JK, O'Sullivan MJ, Phillips L, Prentice RL, Sarto GE, Stefanick ML, Van Horn L, Wactawski-Wende J, Whitlock E, Anderson GL, Assaf AR, Barad D, Women's Health Initiative Investigators. Calcium plus vitamin D supplementation and the risk of fractures. <i>N Engl J Med.</i> 2006 Feb 16;354(7):669-83.	abstract	full
451	Wactawski-Wende J, Kotchen JM, Anderson GL, Assaf AR, Brunner RL, O'Sullivan MJ, Margolis KL, Ockene JK, Phillips L, Pottern L, Prentice RL, Robbins J, Rohan TE, Sarto GE, Sharma S, Stefanick ML, Van Horn L, Wallace RB, Whitlock E, Bassford T, Beresford SA, Black HR, Bonds DE, Brzyski RG, Caan B, Chlebowski RT, Cochrane B, Garland C, Gass M, Hays J, Heiss G, Hendrix SL, Howard BV, Hsia J, Hubbell FA, Jackson RD,	abstract	full

	Johnson KC, Judd H, Kooperberg CL, Kuller LH, LaCroix AZ, Lane DS, Langer RD, Lasser NL, Lewis CE, Limacher MC, Manson JE, Women's Health Initiative Investigators. Calcium plus vitamin D supplementation and the risk of colorectal cancer. N Engl J Med. 2006 Feb 16;354(7):684-96.		
327	Howard BV, Manson JE, Stefanick ML, Beresford SA, Frank G, Jones B, Rodabough RJ, Snetselaar L, Thomson C, Tinker L, Vitolins M, Prentice R. Low-fat dietary pattern and weight change over 7 years: The Women's Health Initiative Dietary Modification Trial. JAMA. 2006 Jan 4;295(1):39-49.	abstract	full
188	Rautaharju PM, Kooperberg C, Larson JC, LaCroix A. Electrocardiographic abnormalities that predict coronary heart disease events and mortality in postmenopausal women: The Women's Health Initiative. Circulation. 2006 Jan 31;113(4):473-80.	abstract	full
41	Pradhan AD, Manson JE, Hendrix SL, Johnson KC, Wagenknecht LE, Haan MN, Weidner G, Lacroix AZ, Cook NR. Cross-sectional correlates of fasting hyperinsulinaemia in postmenopausal women of different ethnic origin. Diabet Med. 2006 Jan;23(1):77-85.	abstract	full
538	Rautaharju PM, Kooperberg C, Larson JC, LaCroix A. Electrocardiographic predictors of incident congestive heart failure and all-cause mortality in postmenopausal women: The Women's Health Initiative. Circulation. 2006 Jan 31;113(4):481-9.	abstract	full
759	Allison MA, Manson JE. Observational studies and clinical trials of menopausal hormone therapy: Can they both be right? Menopause. 2006 Jan-Feb;13(1):1-3.	abstract	full
760	Manson JE, Bassuk SS, Harman SM, Brinton EA, Cedars MI, Lobo R, Merriam GR, Miller VM, Naftolin F, Santoro N. Postmenopausal hormone therapy: New questions and the case for new clinical trials. Menopause. 2006 Jan-Feb;13(1):139-47.	abstract	full
282	Glanz K, Murphy S, Moylan J, Evensen D, Curb JD. Improving dietary self-monitoring and adherence with hand-held computers: A pilot study. Am J Health Promot. 2006 Jan-Feb;20(3):165-70.	abstract	full
786	Bassuk SS, Manson JE. Postmenopausal hormone therapy: Observational studies to clinical trials. In: Liu JH, Gass MLS, eds. Management of the perimenopause (Practical pathways in obstetrics and gynecology). New York: McGraw Hill,2006:377-408.		
777	Chlebowski RT, Anderson G, Geller M, Col N. Coronary heart disease and stroke with aromatase inhibitor, tamoxifen and menopausal hormone therapy use. Clin Breast Cancer. 2006;6(suppl 2):S58-64.		full
785	Allison MA, Manson JE. Is age at initiation of hormone therapy a key determinant of coronary heart disease outcomes? Johns Hopkins Adv Stud in Med. 2006;6(7):329-30.		full
748	LaCroix AZ. Estrogen with and without progestin: Benefits and risks of short-term use. Am J Med. 2005 Dec 19;118 Suppl 12B:79-87.	abstract	full
701	Prentice RL, Pettinger M, Anderson GL. Statistical issues arising in the Women's Health Initiative. Biometrics. 2005 Dec;61(4):899-911; discussion 911-41.	abstract	full
757	Stefanick ML. Estrogens and progestins: Background and history, trends in use, and guidelines and regimens approved by the US Food and Drug Administration. Am J Med. 2005 Dec 19;118 Suppl 12B:64-73.	abstract	full
326	Wactawski-Wende J, Hausmann E, Hovey K, Trevisan M, Grossi S, Genco RJ. The association between osteoporosis and alveolar crestal height in postmenopausal women. J Periodontol. 2005 Nov;76(11 Suppl):2116-24.	abstract	full
323	Bradley CS, Nygaard IE. Vaginal wall descensus and pelvic floor symptoms in older women. Obstet Gynecol. 2005 Oct;106(4):759-66.	abstract	full
398	Chen Z, Maricic M, Pettinger M, Ritenbaugh C, Lopez AM, Barad DH, Gass M, Leboff MS, Bassford TL. Osteoporosis and rate of bone loss among postmenopausal survivors of breast cancer. Cancer. 2005 Oct 1;104(7):1520-30.	abstract	full
243	Prentice RL, Langer R, Stefanick ML, Howard BV, Pettinger M, Anderson G, Barad D, Curb JD, Kotchen J, Kuller L, Limacher M, Wactawski-Wende J, Women's Health Initiative Investigators. Combined postmenopausal hormone therapy and cardiovascular disease: Toward resolving the discrepancy between observational studies and the Women's Health Initiative clinical trial. Am J Epidemiol. 2005 Sep 1;162(5):404-14. Epub 2005 Jul 20.	abstract	full
192	Wampler NS, Chen Z, Jacobsen C, Henderson JA, Howard BV, Rossouw JE. Bone mineral density of American Indian and Alaska Native women compared with non-Hispanic white women: results from the Women's Health Initiative Study. Menopause. 2005 Sep-Oct;12(5):536-44. Epub 2005 Sep 1.	abstract	full

285	McTiernan A, Martin CF, Peck JD, Aragaki AK, Chlebowski RT, Pisano ED, Wang CY, Brunner RL, Johnson KC, Manson JE, Lewis CE, Kotchen JM, Hulka BS, Women's Health Initiative Mammogram Density Study Investigators. Estrogen-plus-progestin use and mammographic density in postmenopausal women: Women's Health Initiative randomized trial. <i>J Natl Cancer Inst.</i> 2005 Sep 21;97(18):1366-76.	abstract	full
78	Wolf RL, Cauley JA, Pettinger M, Jackson R, Lacroix A, Leboff MS, Lewis CE, Nevitt MC, Simon JA, Stone KL, Wactawski-Wende J. Lack of a relation between vitamin and mineral antioxidants and bone mineral density: Results from the Women's Health Initiative. <i>Am J Clin Nutr.</i> 2005 Sep;82(3):581-8.	abstract	full
348	Brunner RL, Gass M, Aragaki A, Hays J, Granek I, Woods N, Mason E, Brzyski R, Ockene J, Assaf A, LaCroix A, Matthews K, Wallace R, Women's Health Initiative Investigators. Effects of conjugated equine estrogen on health-related quality of life in postmenopausal women with hysterectomy: Results from the Women's Health Initiative randomized clinical trial. <i>Arch Intern Med.</i> 2005 Sep 26;165(17):1976-86.	abstract	full
234	Chen Z, Bassford T, Green SB, Cauley JA, Jackson RD, LaCroix AZ, Leboff M, Stefanick ML, Margolis KL. Postmenopausal hormone therapy and body composition--a substudy of the estrogen plus progestin trial of the Women's Health Initiative. <i>Am J Clin Nutr.</i> 2005 Sep;82(3):651-6.	abstract	full
113	Barad D, Kooperberg C, Wactawski-Wende J, Liu J, Hendrix SL, Watts NB. Prior oral contraception and postmenopausal fracture: A Women's Health Initiative observational cohort study. <i>Fertil Steril.</i> 2005 Aug;84(2):374-83.	abstract	full
302	Woods NF, LaCroix AZ, Gray SL, Aragaki A, Cochrane BB, Brunner RL, Masaki K, Murray A, Newman AB. Frailty: Emergence and consequences in women aged 65 and older in the Women's Health Initiative Observational Study. <i>J Am Geriatr Soc.</i> 2005 Aug;53(8):1321-30.	abstract	full
756	Chlebowski RT, Khalkhali I. Abnormal mammographic findings with short-interval follow-up recommendation. <i>Clin Breast Cancer.</i> 2005 Aug;6(3):235-9.	abstract	full
279	Ockene JK, Barad DH, Cochrane BB, Larson JC, Gass M, Wassertheil-Smoller S, Manson JE, Barnabei VM, Lane DS, Brzyski RG, Rosal MC, Wylie-Rosett J, Hays J. Symptom experience after discontinuing use of estrogen plus progestin. <i>JAMA.</i> 2005 Jul 13;294(2):183-93.	abstract	full
753	Wenger NK. Menopausal hormone therapy: Currently no evidence for cardiac protection. <i>Pediatr Blood Cancer.</i> 2005 Jun 15;44(7):625-9.	abstract	full
130	Langer RD, Pradhan AD, Lewis CE, Manson JE, Rossouw JE, Hendrix SL, LaCroix AZ, Ridker PM. Baseline associations between postmenopausal hormone therapy and inflammatory, haemostatic, and lipid biomarkers of coronary heart disease. The Women's Health Initiative Observational Study. <i>Thromb Haemost.</i> 2005 Jun;93(6):1108-16.	abstract	full
265	Yost KJ, Haan MN, Levine RA, Gold EB. Comparing SF-36 scores across three groups of women with different health profiles. <i>Qual Life Res.</i> 2005 Jun;14(5):1251-61.	abstract	full
202	Kim CK, McGorray SP, Bartholomew BA, Marsh M, Dicken T, Wassertheil-Smoller S, Curb JD, Oberman A, Hsia J, Gardin J, Wong ND, Barton B, McMahon RP, Sheps DS. Depressive symptoms and heart rate variability in postmenopausal women. <i>Arch Intern Med.</i> 2005 Jun 13;165(11):1239-44.	abstract	full
229	Barnabei VM, Cochrane BB, Aragaki AK, Nygaard I, Williams RS, McGovern PG, Young RL, Wells EC, O'Sullivan MJ, Chen B, Schenken R, Johnson SR, Women's Health Initiative Investigators. Menopausal symptoms and treatment-related effects of estrogen and progestin in the Women's Health Initiative. <i>Obstet Gynecol.</i> 2005 May;105(5 Pt 1):1063-73.	abstract	full
755	Stefanick ML, Prentice RL, Anderson G, Gass M, Manson JE, Hendrix SL, Vista-Deck D, McNeeley G; Women's Health Initiative Steering Committee. Reanalysis of the Women's Health Initiative oral contraceptive data reveals no evidence of delayed cardiovascular benefit. <i>Fertil Steril.</i> 2005 Apr;83(4):853-4.	abstract	full
754	Phillips LS, Langer RD. Postmenopausal hormone therapy: Critical reappraisal and a unified hypothesis. <i>Fertil Steril.</i> 2005 Mar;83(3):558-66.	abstract	full
144	Howard BV, Kuller L, Langer R, Manson JE, Allen C, Assaf A, Cochrane BB, Larson JC, Lasser N, Rainford M, Van Horn L, Stefanick ML, Trevisan M. Risk of cardiovascular disease by hysterectomy status, with and without oophorectomy: The Women's Health Initiative Observational Study. <i>Circulation.</i> 2005 Mar 29;111(12):1462-70. Epub 2005 Mar 21.	abstract	full
163	Chlebowski RT, Chen Z, Anderson GL, Rohan T, Aragaki A, Lane D, Dolan NC, Paskett ED, McTiernan A, Hubbell FA, Adams-Campbell LL, Prentice R. Ethnicity and breast cancer:	abstract	full

	Factors influencing differences in incidence and outcome. <i>J Natl Cancer Inst.</i> 2005 Mar 16;97(6):439-48.		
164	Margolis KL, Manson JE, Greenland P, Rodabough RJ, Bray PF, Safford M, Grimm RH, Jr, Howard BV, Assaf AR, Prentice R, Women's Health Initiative Research Group. Leukocyte count as a predictor of cardiovascular events and mortality in postmenopausal women: The Women's Health Initiative Observational Study. <i>Arch Intern Med.</i> 2005 Mar 14;165(5):500-8.	abstract	full
206	Chen Z, Maricic M, Bassford TL, Pettinger M, Ritenbaugh C, Lopez AM, Barad DH, Gass M, Leboff MS. Fracture risk among breast cancer survivors: results from the Women's Health Initiative Observational Study. <i>Arch Intern Med.</i> 2005 Mar 14;165(5):552-8.	abstract	full
331	Bradley CS, Kennedy CM, Nygaard IE. Pelvic floor symptoms and lifestyle factors in older women. <i>J Womens Health (Larchmt).</i> 2005 Mar;14(2):128-36.	abstract	full
274	Espeland MA, Gu L, Masaki KH, Langer RD, Coker LH, Stefanick ML, Ockene J, Rapp SR. Association between reported alcohol intake and cognition: results from the Women's Health Initiative Memory Study. <i>Am J Epidemiol.</i> 2005 Feb 1;161(3):228-38.	abstract	full
249	Hendrix SL, Cochrane BB, Nygaard IE, Handa VL, Barnabei VM, Iglesia C, Aragaki A, Naughton MJ, Wallace RB, McNeeley SG. Effects of estrogen with and without progestin on urinary incontinence. <i>JAMA.</i> 2005 Feb 23;293(8):935-48.	abstract	full
272	Cirillo DJ, Wallace RB, Rodabough RJ, Greenland P, LaCroix AZ, Limacher MC, Larson JC. Effect of estrogen therapy on gallbladder disease. <i>JAMA.</i> 2005 Jan 19;293(3):330-9.	abstract	full
186	Hsia J, Wu L, Allen C, Oberman A, Lawson WE, Torrens J, Safford M, Limacher MC, Howard BV, Women's Health Initiative Research Group. Physical activity and diabetes risk in postmenopausal women. <i>Am J Prev Med.</i> 2005 Jan;28(1):19-25.	abstract	full
752	Levine DW, Dailey ME, Rockhill B, Tipping D, Naughton MJ, Shumaker SA. Validation of the Women's Health Initiative Insomnia Rating Scale in a multicenter controlled clinical trial. <i>Psychosom Med.</i> 2005 Jan-Feb;67(1):98-104.	abstract	full
751	Gass M, Anderson GL, Barad D. Concerns about published data from the estrogen-progestin (HT) arm of the WHI. <i>Am J Obstet Gynecol.</i> 2005 Jan;192(1):333; author reply 334.	abstract	full
766	Mazhari R, Hsia J. Prevalence, clinical significance, and management of peripheral arterial disease in women: Is there a role for postmenopausal hormone therapy? <i>Vasc Health Risk Manag.</i> 2005;1(2):111-7.	abstract	full
800	Barrett-Connor E, Grady D, Stefanick ML. The rise and fall of menopausal hormone therapy. <i>Annu Rev Public Health.</i> 2005;26:115-40.	abstract	full
294	Qi L, Wang CY, Prentice RL. Weighted estimators for proportional hazards regression with missing covariates. <i>J Am Stat Assoc.</i> 2005;100:1250-1263.		full
200	Michael YL, Perrin N, Bowen D, Cochrane BB, Wisdom JP, Brzyski R, Ritenbaugh C. Expression and ambivalence over expression of negative emotion: Psychometric analysis in the Women's Health Initiative. <i>J Women Aging.</i> 2005;17(1-2):5-18.	abstract	full
232	Prentice R, Anderson G. Women's Health Initiative: Statistical aspects and selected early results. In: Armitage P, Colton T, eds. <i>Encyclopedia of biostatistics.</i> 2nd ed. Wiley, 2005.		
62	Pastore LM, Carter RA, Hulka BS, Wells E. Self-reported urogenital symptoms in postmenopausal women: Women's Health Initiative. <i>Maturitas.</i> 2004 Dec 10;49(4):292-303.	abstract	full
92	Heckbert SR, Kooperberg C, Safford MM, Psaty BM, Hsia J, McTiernan A, Gaziano JM, Frishman WH, Curb JD. Comparison of self-report, hospital discharge codes, and adjudication of cardiovascular events in the Women's Health Initiative. <i>Am J Epidemiol.</i> 2004 Dec 15;160(12):1152-8.	abstract	full
248	Hsia J, Klouj A, Prasad A, Burt J, Adams-Campbell LL, Howard BV. Progression of coronary calcification in healthy postmenopausal women. <i>BMC Cardiovasc Disord.</i> 2004 Dec 1;4:21.	abstract	full
102	Wassertheil-Smoller S, Psaty B, Greenland P, Oberman A, Kotchen T, Mouton C, Black H, Aragaki A, Trevisan M. Association between cardiovascular outcomes and antihypertensive drug treatment in older women. <i>JAMA.</i> 2004 Dec 15;292(23):2849-59.	abstract	full
51	Messina CR, Lane DS, Glanz K, West DS, Taylor V, Frishman W, Powell L. Relationship of social support and social burden to repeated breast cancer screening in the Women's Health Initiative. <i>Health Psychol.</i> 2004 Nov;23(6):582-94.	abstract	full
288	Chlebowski RT, Pettinger M, Stefanick ML, Howard BV, Mossavar-Rahmani Y, McTiernan A. Insulin, physical activity, and caloric intake in postmenopausal women: Breast cancer implications. <i>J Clin Oncol.</i> 2004 Nov 15;22(22):4507-13.	abstract	full

25	Kadish AH, Greenland P, Limacher MC, Frishman WH, Daugherty SA, Schwartz JB. Estrogen and progestin use and the QT interval in postmenopausal women. <i>Ann Noninvasive Electrocardiol.</i> 2004 Oct;9(4):366-74.	abstract	full
222	Cushman M, Kuller LH, Prentice R, Rodabough RJ, Psaty BM, Stafford RS, Sidney S, Rosendaal FR, Women's Health Initiative Investigators. Estrogen plus progestin and risk of venous thrombosis. <i>JAMA.</i> 2004 Oct 6;292(13):1573-80.	abstract	full
317	Nygaard I, Bradley C, Brandt D, Women's Health Initiative. Pelvic organ prolapse in older women: Prevalence and risk factors. <i>Obstet Gynecol.</i> 2004 Sep;104(3):489-97.	abstract	full
271	Brennan RM, Wactawski-Wende J, Crespo CJ, Dmochowski J. Factors associated with treatment initiation after osteoporosis screening. <i>Am J Epidemiol.</i> 2004 Sep 1;160(5):475-83.	abstract	full
80	Howard BV, Adams-Campbell L, Allen C, Black H, Passaro M, Rodabough RJ, Rodriguez BL, Safford M, Stevens VJ, Wagenknecht LE. Insulin resistance and weight gain in postmenopausal women of diverse ethnic groups. <i>Int J Obes Relat Metab Disord.</i> 2004 Aug;28(8):1039-47.	abstract	full
26	Fouad MN, Corbie-Smith G, Curb D, Howard BV, Mouton C, Simon M, Talavera G, Thompson J, Wang CY, White C, Young R. Special populations recruitment for the Women's Health Initiative: Successes and limitations. <i>Control Clin Trials.</i> 2004 Aug;25(4):335-52.	abstract	full
212	Margolis KL, Bonds DE, Rodabough RJ, Tinker L, Phillips LS, Allen C, Bassford T, Burke G, Torrens J, Howard BV, Women's Health Initiative Investigators. Effect of oestrogen plus progestin on the incidence of diabetes in postmenopausal women: Results from the Women's Health Initiative Hormone Trial. <i>Diabetologia.</i> 2004 Jul;47(7):1175-87. Epub 2004 Jul 14.	abstract	full
129	Pradhan AD, LaCroix AZ, Langer RD, Trevisan M, Lewis CE, Hsia JA, Oberman A, Kotchen JM, Ridker PM. Tissue plasminogen activator antigen and D-dimer as markers for atherothrombotic risk among healthy postmenopausal women. <i>Circulation.</i> 2004 Jul 20;110(3):292-300. Epub 2004 Jul 6.	abstract	full
332	Espeland MA, Rapp SR, Shumaker SA, Brunner R, Manson JE, Sherwin BB, Hsia J, Margolis KL, Hogan PE, Wallace R, Dailey M, Freeman R, Hays J. Conjugated equine estrogens and global cognitive function in postmenopausal women: Women's Health Initiative Memory Study. <i>JAMA.</i> 2004 Jun 23;291(24):2959-68.	abstract	full
336	Shumaker SA, Legault C, Kuller L, Rapp SR, Thal L, Lane DS, Fillit H, Stefanick ML, Hendrix SL, Lewis CE, Masaki K, Coker LH. Conjugated equine estrogens and incidence of probable dementia and mild cognitive impairment in postmenopausal women: Women's Health Initiative Memory Study. <i>JAMA.</i> 2004 Jun 23;291(24):2947-58.	abstract	full
367	Howard BV. The Women's Health Initiative: a potential resource for future studies of autoimmune diseases. <i>Autoimmunity.</i> 2004 Jun;37(4):265-8.	abstract	full
177	Chen Z, Kooperberg C, Pettinger MB, Bassford T, Cauley JA, LaCroix AZ, Lewis CE, Kipersztok S, Borne C, Jackson RD. Validity of self-report for fractures among a multiethnic cohort of postmenopausal women: Results from the Women's Health Initiative observational study and clinical trials. <i>Menopause.</i> 2004 May-Jun;11(3):264-74.	abstract	full
750	Klein KP, Rapp SR. Women's cognitive health: Postmenopausal dementia and the Women's Health Initiative Memory Study. <i>Womens Health Issues.</i> 2004 May-Jun;14(3):71-4.	abstract	full
189	Women's Health Initiative Study Group. Dietary adherence in the Women's Health Initiative Dietary Modification Trial. <i>J Am Diet Assoc.</i> 2004 Apr;104(4):654-8.	abstract	full
749	Kripke DF, Jean-Louis G, Elliott JA, Klauber MR, Rex KM, Tuunainen A, Langer RD. Ethnicity, sleep, mood, and illumination in postmenopausal women. <i>BMC Psychiatry.</i> 2004 Apr 7;4:8.	abstract	full
115	Mouton CP, Rodabough RJ, Rovi SL, Hunt JL, Talamantes MA, Brzyski RG, Burge SK. Prevalence and 3-year incidence of abuse among postmenopausal women. <i>Am J Public Health.</i> 2004 Apr;94(4):605-12.	abstract	full
273	Anderson GL, Limacher M, Assaf AR, Bassford T, Beresford SA, Black H, Bonds D, Brunner R, Brzyski R, Caan B, Chlebowski R, Curb D, Gass M, Hays J, Heiss G, Hendrix S, Howard BV, Hsia J, Hubbell A, Jackson R, Johnson R, Johnson KC, Judd H, Kotchen JM, Kuller L, LaCroix AZ, Lane D, Langer RD, Lasser N, Lewis CE, Manson J, Margolis K, Ockene J, O'Sullivan MJ, Phillips L, Prentice RL, Ritenbaugh C, Robbins J, Rossouw JE, Sarto G, Stefanick ML, Van Horn L, Wactawski-Wende J, Wallace R, Wassertheil-Smoller S, Women's Health Initiative Steering Committee. Effects of conjugated equine estrogen in postmenopausal women with hysterectomy: The Women's Health Initiative randomized controlled trial. <i>JAMA.</i> 2004 Apr 14;291(14):1701-12.	abstract	full

197	Hsia J, Aragaki A, Bloch M, LaCroix AZ, Wallace R, WHI Investigators. Predictors of angina pectoris versus myocardial infarction from the Women's Health Initiative Observational Study. <i>Am J Cardiol.</i> 2004 Mar 15;93(6):673-8.	abstract	full
233	Chlebowski RT, Wactawski-Wende J, Ritenbaugh C, Hubbell FA, Ascensao J, Rodabough RJ, Rosenberg CA, Taylor VM, Harris R, Chen C, Adams-Campbell LL, White E, Women's Health Initiative Investigators. Estrogen plus progestin and colorectal cancer in postmenopausal women. <i>N Engl J Med.</i> 2004 Mar 4;350(10):991-1004.	abstract	full
277	Hsia J, Criqui MH, Rodabough RJ, Langer RD, Resnick HE, Phillips LS, Allison M, Bonds DE, Masaki K, Caralis P, Kotchen JM, Women's Health Initiative Investigators. Estrogen plus progestin and the risk of peripheral arterial disease: the Women's Health Initiative. <i>Circulation.</i> 2004 Feb 10;109(5):620-6.	abstract	full
799	Waters DD, Gordon D, Rossouw JE, Cannon RO 3rd, Collins P, Herrington DM, Hsia J, Langer R, Mosca L, Ouyang P, Sopko G, Stefanick ML; National Heart, Lung and Blood Institute; American College of Cardiology Foundation. Women's Ischemic Syndrome Evaluation: current status and future research directions: Report of the National Heart, Lung and Blood Institute workshop: October 2-4, 2002 : Section 4: lessons from hormone replacement trials. <i>Circulation.</i> 2004 Feb 17;109(6):e53-5.	abstract	full
13	Wassertheil-Smoller S, Shumaker S, Ockene J, Talavera GA, Greenland P, Cochrane B, Robbins J, Aragaki A, Dunbar-Jacob J. Depression and cardiovascular sequelae in postmenopausal women. The Women's Health Initiative (WHI). <i>Arch Intern Med.</i> 2004 Feb 9;164(3):289-98.	abstract	full
134	Mossavar-Rahmani Y, Henry H, Rodabough R, Bragg C, Brewer A, Freed T, Kinzel L, Pedersen M, Soule CO, Vosburg S. Additional self-monitoring tools in the dietary modification component of the Women's Health Initiative. <i>J Am Diet Assoc.</i> 2004 Jan;104(1):76-85.	abstract	full
179	Handa VL, Garrett E, Hendrix S, Gold E, Robbins J. Progression and remission of pelvic organ prolapse: A longitudinal study of menopausal women. <i>Am J Obstet Gynecol.</i> 2004 Jan;190(1):27-32.	abstract	full
132	Rosenberg CA, Greenland P, Khandekar J, Loar A, Ascensao J, Lopez AM. Association of nonmelanoma skin cancer with second malignancy. <i>Cancer.</i> 2004 Jan 1;100(1):130-8.	abstract	full
784	Manson JE, Bassuk S. The menopause transition and postmenopausal hormone therapy. In: Kasper DL et al, eds. <i>Harrison's principles of internal medicine.</i> 16th ed. New York: McGraw-Hill,2004:2209-13.		
368	Prentice RL. Postmenopausal hormone therapy in relation to cardiovascular disease and cognition. <i>Proceedings of the 47th Study Group of the Royal College of Obstetricians and Gynecologists.</i> 2004.		
237	Resnick SM, Coker LH, Maki PM, Rapp SR, Espeland MA, Shumaker SA. The Women's Health Initiative Study of Cognitive Aging (WHISCA): A randomized clinical trial of the effects of hormone therapy on age-associated cognitive decline. <i>Clin Trials.</i> 2004;1(5):440-50.	abstract	full
242	Chlebowski RT, Kim JA, Col NF. Estrogen deficiency symptom management in breast cancer survivors in the changing context of menopausal hormone therapy. <i>Semin Oncol.</i> 2003 Dec;30(6):776-88.	abstract	full
166	Chen Z, Pettinger MB, Ritenbaugh C, LaCroix AZ, Robbins J, Caan BJ, Barad DH, Hakim IA. Habitual tea consumption and risk of osteoporosis: A prospective study in the Women's Health Initiative observational cohort. <i>Am J Epidemiol.</i> 2003 Oct 15;158(8):772-81.	abstract	full
519	Anderson GL, Manson J, Wallace R, Lund B, Hall D, Davis S, Shumaker S, Wang CY, Stein E, Prentice RL. Implementation of the Women's Health Initiative study design. <i>Ann Epidemiol.</i> 2003 Oct;13(9 Suppl):S5-17.	abstract	full
292	Hendrix SL. Menopausal hormone therapy informed consent. <i>Am J Obstet Gynecol.</i> 2003 Oct;189(4 Suppl):S31-2; discussion S32-6.	abstract	full
521	Stefanick ML, Cochrane BB, Hsia J, Barad DH, Liu JH, Johnson SR. The Women's Health Initiative postmenopausal hormone trials: Overview and baseline characteristics of participants. <i>Ann Epidemiol.</i> 2003 Oct;13(9 Suppl):S78-86.	abstract	full
16	Hebert JR, Patterson RE, Gorfine M, Ebbeling CB, St Jeor ST, Chlebowski RT. Differences between estimated caloric requirements and self-reported caloric intake in the Women's Health Initiative. <i>Ann Epidemiol.</i> 2003 Oct;13(9):629-37.	abstract	full
522	Ritenbaugh C, Patterson RE, Chlebowski RT, Caan B, Fels-Tinker L, Howard B, Ockene J. The Women's Health Initiative Dietary Modification Trial: Overview and baseline	abstract	full

	characteristics of participants. <i>Ann Epidemiol.</i> 2003 Oct;13(9 Suppl):S87-97.		
525	Curb JD, McTiernan A, Heckbert SR, Kooperberg C, Stanford J, Nevitt M, Johnson KC, Proulx-Burns L, Pastore L, Criqui M, Daugherty S, WHI Morbidity and Mortality Committee. Outcomes ascertainment and adjudication methods in the Women's Health Initiative. <i>Ann Epidemiol.</i> 2003 Oct;13(9 Suppl):S122-8.	abstract	full
747	Geller ML, Chlebowski RT. HT and breast cancer risk. <i>Fertil Steril.</i> 2003 Oct;80 Suppl 4:5-9; quiz 54-5.	abstract	full
221	Anderson GL, Judd HL, Kaunitz AM, Barad DH, Beresford SA, Pettinger M, Liu J, McNeeley SG, Lopez AM, Women's Health Initiative Investigators. Effects of estrogen plus progestin on gynecologic cancers and associated diagnostic procedures: The Women's Health Initiative randomized trial. <i>JAMA.</i> 2003 Oct 1;290(13):1739-48.	abstract	full
524	Langer RD, White E, Lewis CE, Kotchen JM, Hendrix SL, Trevisan M. The Women's Health Initiative Observational Study: Baseline characteristics of participants and reliability of baseline measures. <i>Ann Epidemiol.</i> 2003 Oct;13(9 Suppl):S107-21.	abstract	full
520	Hays J, Hunt JR, Hubbell FA, Anderson GL, Limacher M, Allen C, Rossouw JE. The Women's Health Initiative recruitment methods and results. <i>Ann Epidemiol.</i> 2003 Oct;13(9 Suppl):S18-77.	abstract	full
518	Rossouw JE, Anderson GL, Oberman A. Baseline monograph - foreword. <i>Ann Epidemiol.</i> 2003;13:S1-S4.		full
523	Jackson RD, LaCroix AZ, Cauley JA, McGowan J. The Women's Health Initiative calcium-vitamin D trial: Overview and baseline characteristics of participants. <i>Ann Epidemiol.</i> 2003 Oct;13(9 Suppl):S98-106.	abstract	full
208	Cauley JA, Robbins J, Chen Z, Cummings SR, Jackson RD, LaCroix AZ, LeBoff M, Lewis CE, McGowan J, Neuner J, Pettinger M, Stefanick ML, Wactawski-Wende J, Watts NB, Women's Health Initiative Investigators. Effects of estrogen plus progestin on risk of fracture and bone mineral density: The Women's Health Initiative randomized trial. <i>JAMA.</i> 2003 Oct 1;290(13):1729-38.	abstract	full
171	Smoller JW, Pollack MH, Wassertheil-Smoller S, Barton B, Hendrix SL, Jackson RD, Dicken T, Oberman A, Sheps DS, Women's Health Initiative Investigators. Prevalence and correlates of panic attacks in postmenopausal women: Results from an ancillary study to the Women's Health Initiative. <i>Arch Intern Med.</i> 2003 Sep 22;163(17):2041-50.	abstract	full
145	Harris RE, Chlebowski RT, Jackson RD, Frid DJ, Ascenseo JL, Anderson G, Loar A, Rodabough RJ, White E, McTiernan A. Breast cancer and nonsteroidal anti-inflammatory drugs: Prospective results from the Women's Health Initiative. <i>Cancer Res.</i> 2003 Sep 15;63(18):6096-101.	abstract	full
95	Wilcox S, Evenson KR, Aragaki A, Wassertheil-Smoller S, Mouton CP, Loevinger BL. The effects of widowhood on physical and mental health, health behaviors, and health outcomes: The Women's Health Initiative. <i>Health Psychol.</i> 2003 Sep;22(5):513-22.	abstract	full
83	McTiernan A, Kooperberg C, White E, Wilcox S, Coates R, Adams-Campbell LL, Woods N, Ockene J. Recreational physical activity and the risk of breast cancer in postmenopausal women: The Women's Health Initiative Cohort Study. <i>JAMA.</i> 2003 Sep 10;290(10):1331-6.	abstract	full
140	Hsia J, Barad D, Margolis K, Rodabough R, McGovern PG, Limacher MC, Oberman A, Smoller S, Women's Health Initiative Research Group. Usefulness of prior hysterectomy as an independent predictor of Framingham risk score (The Women's Health Initiative). <i>Am J Cardiol.</i> 2003 Aug 1;92(3):264-9.	abstract	full
84	Jackson M, Berman N, Huber M, Snetselaar L, Granek I, Boe K, Milas C, Spivak J, Chlebowski RT. Research staff turnover and participant adherence in the Women's Health Initiative. <i>Control Clin Trials.</i> 2003 Aug;24(4):422-35.	abstract	full
210	Manson JE, Hsia J, Johnson KC, Rossouw JE, Assaf AR, Lasser NL, Trevisan M, Black HR, Heckbert SR, Detrano R, Strickland OL, Wong ND, Crouse JR, Stein E, Cushman M, Women's Health Initiative Investigators. Estrogen plus progestin and the risk of coronary heart disease. <i>N Engl J Med.</i> 2003 Aug 7;349(6):523-34.	abstract	full
745	Hendrix SL. Hormone therapy: Evolving concepts. <i>Curr Opin Rheumatol.</i> 2003 Jul;15(4):464-8.	abstract	full
122	LaCroix AZ, Cauley JA, Pettinger M, Hsia J, Bauer DC, McGowan J, Chen Z, Lewis CE, McNeeley SG, Passaro MD, Jackson RD. Statin use, clinical fracture, and bone density in postmenopausal women: Results from the Women's Health Initiative Observational Study. <i>Ann Intern Med.</i> 2003 Jul 15;139(2):97-104.	abstract	full

203	Chlebowski RT, Hendrix SL, Langer RD, Stefanick ML, Gass M, Lane D, Rodabough RJ, Gilligan MA, Cyr MG, Thomson CA, Khandekar J, Petrovitch H, McTiernan A, WHI Investigators. Influence of estrogen plus progestin on breast cancer and mammography in healthy postmenopausal women: The Women's Health Initiative Randomized Trial. JAMA. 2003 Jun 25;289(24):3243-53.	abstract	full
169	Levine DW, Kripke DF, Kaplan RM, Lewis MA, Naughton MJ, Bowen DJ, Shumaker SA. Reliability and validity of the Women's Health Initiative Insomnia Rating Scale. Psychol Assess. 2003 Jun;15(2):137-48.	abstract	full
55	Levine DW, Kaplan RM, Kripke DF, Bowen DJ, Naughton MJ, Shumaker SA. Factor structure and measurement invariance of the Women's Health Initiative Insomnia Rating Scale. Psychol Assess. 2003 Jun;15(2):123-36.	abstract	full
746	Gass M. Impact of WHI conclusions and ACOG guidelines on clinical practice. Int J Fertil Womens Med. 2003 May-Jun;48(3):106-10; discussion 137-8.	abstract	
211	Hays J, Ockene JK, Brunner RL, Kotchen JM, Manson JE, Patterson RE, Aragaki AK, Shumaker SA, Brzyski RG, LaCroix AZ, Granek IA, Valanis BG, Women's Health Initiative Investigators. Effects of estrogen plus progestin on health-related quality of life. N Engl J Med. 2003 May 8;348(19):1839-54. Epub 2003 Mar 17.	abstract	full
225	Shumaker SA, Legault C, Rapp SR, Thal L, Wallace RB, Ockene JK, Hendrix SL, Jones BN, Assaf AR, Jackson RD, Kotchen JM, Wassertheil-Smoller S, Wactawski-Wende J, WHIMS Investigators. Estrogen plus progestin and the incidence of dementia and mild cognitive impairment in postmenopausal women: the Women's Health Initiative Memory Study: A randomized controlled trial. JAMA. 2003 May 28;289(20):2651-62.	abstract	full
226	Rapp SR, Espeland MA, Shumaker SA, Henderson VW, Brunner RL, Manson JE, Gass ML, Stefanick ML, Lane DS, Hays J, Johnson KC, Coker LH, Dailey M, Bowen D, WHIMS Investigators. Effect of estrogen plus progestin on global cognitive function in postmenopausal women: the Women's Health Initiative Memory Study: A randomized controlled trial. JAMA. 2003 May 28;289(20):2663-72.	abstract	full
204	Wassertheil-Smoller S, Hendrix SL, Limacher M, Heiss G, Kooperberg C, Baird A, Kotchen T, Curb JD, Black H, Rossouw JE, Aragaki A, Safford M, Stein E, Laowattana S, Mysiw WJ, WHI Investigators. Effect of estrogen plus progestin on stroke in postmenopausal women: the Women's Health Initiative: A randomized trial. JAMA. 2003 May 28;289(20):2673-84.	abstract	full
138	Rapp SR, Espeland MA, Hogan P, Jones BN, Dugan E, The WHIMS investigators. Baseline experience with Modified Mini Mental State Exam: The Women's Health Initiative Memory Study (WHIMS). Aging Ment Health. 2003 May;7(3):217-23.	abstract	full
142	Khurana C, Rosenbaum CG, Howard BV, Adams-Campbell LL, Detrano RC, Klouj A, Hsia J. Coronary artery calcification in black women and white women. Am Heart J. 2003 Apr;145(4):724-9.	abstract	full
783	Michels KB, Manson JE. Postmenopausal hormone therapy. A reversal of fortune. Circulation. 2003 Apr 15;107(14):1830-3.	abstract	full
155	Patterson RE, Kristal A, Rodabough R, Caan B, Lillington L, Mossavar-Rahmani Y, Simon MS, Snetselaar L, Van Horn L. Changes in food sources of dietary fat in response to an intensive low-fat dietary intervention: Early results from the Women's Health Initiative. J Am Diet Assoc. 2003 Apr;103(4):454-60.	abstract	full
98	Shikany JM, Patterson RE, Agurs-Collins T, Anderson G. Antioxidant supplement use in Women's Health Initiative participants. Prev Med. 2003 Mar;36(3):379-87.	abstract	full
139	Greaves KA, Going SB, Fernandez ML, Milliken LA, Lohman TG, Bassford T, McNamara DJ. Cholesteryl ester transfer protein and lecithin:cholesterol acyltransferase activities in hispanic and anglo postmenopausal women: Associations with total and regional body fat. Metabolism. 2003 Mar;52(3):282-9.	abstract	full
99	Howard BV, Criqui MH, Curb JD, Rodabough R, Safford MM, Santoro N, Wilson AC, Wylie-Rosett J. Risk factor clustering in the insulin resistance syndrome and its relationship to cardiovascular disease in postmenopausal white, black, hispanic, and Asian/Pacific Islander women. Metabolism. 2003 Mar;52(3):362-71.	abstract	full
100	Yasmeen S, Romano PS, Pettinger M, Chlebowski RT, Robbins JA, Lane DS, Hendrix SL. Frequency and predictive value of a mammographic recommendation for short-interval follow-up. J Natl Cancer Inst. 2003 Mar 19;95(6):429-36.	abstract	full
744	Johnson K. Treatment of menopause: Recommendations for hormonal and non-hormonal	abstract	

	therapy. <i>J Okla State Med Assoc.</i> 2003 Mar;96(3):140-2.		
743	Hendrix SL. The Women's Health Initiative estrogen plus progestin trial: The study and how it changes our practice. <i>J Am Osteopath Assoc.</i> 2003 Feb;103(2 Suppl 2):S3-5.	abstract	full
782	Grodstein F, Clarkson TB, Manson JE. Understanding the divergent data on postmenopausal hormone therapy. <i>N Engl J Med.</i> 2003 Feb 13;348(7):645-50.	abstract	full
111	Bowen D, Green P, Vizenor N, Vu C, Kreuter P, Rolls B. Effects of fat content on fat hedonics: Cognition or taste? <i>Physiol Behav.</i> 2003 Feb;78(2):247-53.	abstract	full
235	Kuller LH. Women's Health Initiative. Hormone replacement therapy and risk of cardiovascular disease: Implications of the results of the Women's Health Initiative. <i>Arterioscler Thromb Vasc Biol.</i> 2003 Jan 1;23(1):11-6.	abstract	full
778	Chlebowski RT. Menopausal hormone therapy and breast cancer: Where we are after the WHI. <i>ASBD Advisor.</i> 2003;2:7-10.		
246	Hendrix S, Prentice R. WHI response to Goodman, Goldzieher and Ayala's critique of the Women's Health Initiative report on the risks and benefits of estrogen plus progestin. <i>Menopausal Medicine.</i> 2003;11:1-4.		full
224	Gorfine, Hsu, Prentice. Estimation of dependence between paired correlated failure times in the presence of covariate measurement error. <i>J R Stat Soc [Ser B].</i> 2003;65(3):633-61.		full
105	Johnson RE, Williams RD, Nagy MC, Fouad MN. Retention of under-served women in clinical trials: A focus group study. <i>Ethn Dis.</i> 2003 Spring;13(2):268-78.	abstract	full
198	Cochrane BB, Lund B, Anderson S, Prentice R. The Women's Health Initiative: Aspects of management and coordination. In: Hawkins JW, Haggerty LA, eds. <i>Diversity in health care research: strategies for multisite, multidisciplinary, and multi-ethnic projects.</i> 1st ed. New York: Springer,2003:181-207.		full
112	Bowen D, Ehret C, Pedersen M, Snetselaar L, Johnson M, Tinker L, Hollinger D, Ilona L, Bland K, Sivertsen D, Ocke D, Staats L, Beedoe JW. Results of an adjunct dietary intervention program in the Women's Health Initiative. <i>J Am Diet Assoc.</i> 2002 Nov;102(11):1631-7.	abstract	full
220	Furniss K. The Women's Health Initiative. Implications for practice. <i>Adv Nurse Pract.</i> 2002 Nov;10(11):53-5.	abstract	full
107	Evenson KR, Wilcox S, Pettinger M, Brunner R, King AC, McTiernan A. Vigorous leisure activity through women's adult life: The Women's Health Initiative Observational Cohort Study. <i>Am J Epidemiol.</i> 2002 Nov 15;156(10):945-53.	abstract	full
135	Barondess DA, Singh M, Hendrix SL, Nelson DA. Radiographic measurements, bone mineral density, and the Singh Index in the proximal femur of white and black postmenopausal women. <i>Dis Mon.</i> 2002 Oct;48(10):637-46.	abstract	full
91	Hsia J, Rodabough R, Rosal MC, Cochrane B, Howard BV, Snetselaar L, Frishman WH, Stefanick ML. Compliance with National Cholesterol Education Program dietary and lifestyle guidelines among older women with self-reported hypercholesterolemia. <i>The Women's Health Initiative.</i> <i>Am J Med.</i> 2002 Oct 1;113(5):384-92.	abstract	full
741	Horner NK, Patterson RE, Neuhaus ML, Lampe JW, Beresford SA, Prentice RL. Participant characteristics associated with errors in self-reported energy intake from the Women's Health Initiative food-frequency questionnaire. <i>Am J Clin Nutr.</i> 2002 Oct;76(4):766-73.	abstract	full
120	Morimoto LM, White E, Chen Z, Chlebowski RT, Hays J, Kuller L, Lopez AM, Manson J, Margolis KL, Muti PC, Stefanick ML, McTiernan A. Obesity, body size, and risk of postmenopausal breast cancer: the Women's Health Initiative (United States). <i>Cancer Causes Control.</i> 2002 Oct;13(8):741-51.	abstract	full
742	Jeffcoat MK. Risks, fears and choices: Unexpected lessons from the Women's Health Initiative. <i>J Am Dent Assoc.</i> 2002 Oct;133(10):1314, 1316, 1318.	abstract	full
740	Johnson SR. Hormone replacement therapy: Applying the results of the Women's Health Initiative. <i>Cleve Clin J Med.</i> 2002 Sep;69(9):682, 685.	abstract	full
66	Manson JE, Greenland P, LaCroix AZ, Stefanick ML, Mouton CP, Oberman A, Perri MG, Sheps DS, Pettinger MB, Siscovick DS. Walking compared with vigorous exercise for the prevention of cardiovascular events in women. <i>N Engl J Med.</i> 2002 Sep 5;347(10):716-25.	abstract	full
128	Pradhan AD, Manson JE, Rossouw JE, Siscovick DS, Mouton CP, Rifai N, Wallace RB, Jackson RD, Pettinger MB, Ridker PM. Inflammatory biomarkers, hormone replacement therapy, and incident coronary heart disease: Prospective analysis from the Women's Health Initiative Observational Study. <i>JAMA.</i> 2002 Aug 28;288(8):980-7.	abstract	full

149	Vogt MT, Lauerman WC, Chirumbole M, Kuller LH. A community-based study of postmenopausal white women with back and leg pain: Health status and limitations in physical activity. <i>J Gerontol A Biol Sci Med Sci</i> . 2002 Aug;57(8):M544-50.	abstract	full
240	Rossouw JE, Anderson GL, Prentice RL, LaCroix AZ, Kooperberg C, Stefanick ML, Jackson RD, Beresford SA, Howard BV, Johnson KC, Kotchen JM, Ockene J, Writing Group for the Women's Health Initiative Investigators. Risks and benefits of estrogen plus progestin in healthy postmenopausal women: principal results from the Women's Health Initiative randomized controlled trial. <i>JAMA</i> . 2002 Jul 17;288(3):321-33.	abstract	full
780	Manson JE, Bassuk SS. Risks and benefits of estrogen plus progestin in healthy postmenopausal women: The Women's Health Initiative. In: Braunwald E et al, eds. <i>Harrison's principles of internal medicine online: Clinical trial update</i> . McGraw-Hill,2002.		
86	Tinker LF, Perri MG, Patterson RE, Bowen DJ, McIntosh M, Parker LM, Sevick MA, Wodarski LA. The effects of physical and emotional status on adherence to a low-fat dietary pattern in the Women's Health Initiative. <i>J Am Diet Assoc</i> . 2002 Jun;102(6):789-800, 888.	abstract	full
22	Hendrix SL, Clark A, Nygaard I, Aragaki A, Barnabei V, McTiernan A. Pelvic organ prolapse in the Women's Health Initiative: Gravity and gravidity. <i>Am J Obstet Gynecol</i> . 2002 Jun;186(6):1160-6.	abstract	full
137	Larkey LK, Staten LK, Ritenbaugh C, Hall RA, Buller DB, Bassford T, Altmani BR. Recruitment of hispanic women to the Women's Health Initiative. The case of Embajadoras in Arizona. <i>Control Clin Trials</i> . 2002;23(3):289-298.	abstract	full
739	Rossouw JE. Effect of postmenopausal hormone therapy on cardiovascular risk. <i>J Hypertens Suppl</i> . 2002 May;20(2):S62-5.	abstract	
126	Kearney MH, Rosal MC, Ockene JK, Churchill LC. Influences on older women's adherence to a low-fat diet in the Women's Health Initiative. <i>Psychosom Med</i> . 2002 May-Jun;64(3):450-7.	abstract	full
187	Rossouw J. Postmenopausal hormone therapy and cardiovascular disease. In: Yusuf S, ed. <i>Evidence based cardiology</i> . 2nd ed. London: BMJ Books,2002:244-58.		
93	Shikany JM. Fat intake in husbands of participants in the dietary modification component of the Women's Health Initiative. <i>Nutr Res</i> . 2002;22:577-586.		full
67	Mossavar-Rahmani Y, Garland CF, Caan B, Hebert JR, Wodarski LA, Vitols MZ, Himes JH, Parker LM. Yogurt consumption is associated with healthy behavior in postmenopausal women. <i>Clin J Women's Health</i> . 2002;2(3):128-134.		full
19	Manson JE, Lewis CE, Kotchen JM, Allen C, Johnson KC, Stefanick M, Foreyt J, Klesges R, Tinker L, Noonan E, Perri M, Hall D. Ethnic, socioeconomic, and lifestyle correlates of obesity in U.S. women: The Women's Health Initiative. <i>Clin J Womens Health</i> . 2001;Dec 1(5):225-34.		full
43	Kripke DF, Brunner R, Freeman R, Hendrix S, Jackson RD, Masaki K, Carter RA. Sleep complaints of postmenopausal women. <i>Clin J Women's Health</i> . 2001;1:244-52.		full
76	Hopkins S, Burrows E, Bowen DJ, Tinker LF. Differences in eating pattern labels between maintainers and nonmaintainers in the Women's Health Initiative. <i>J Nutr Educ</i> . 2001 Sep-Oct;33(5):278-83.	abstract	full
59	Hall WD, Pettinger M, Oberman A, Watts NB, Johnson KC, Paskett ED, Limacher MC, Hays J. Risk factors for kidney stones in older women in the southern United States. <i>Am J Med Sci</i> . 2001 Jul;322(1):12-8.	abstract	full
781	Manson JE, Martin KA. Clinical Practice. Postmenopausal hormone-replacement therapy. <i>N Engl J Med</i> 2001; 345(1):34-40.	abstract	full
104	Wilcox S, Shumaker SA, Bowen DJ, Naughton MJ, Rosal MC, Ludlam SE, Dugan E, Hunt JR, Stevens S. Promoting adherence and retention to clinical trials in special populations: A Women's Health Initiative workshop. <i>Control Clin Trials</i> . 2001 Jun;22(3):279-89.	abstract	full
70	White E, Kristal AR, Shikany JM, Wilson AC, Chen C, Mares-Perleman JA, Masaki KH, Caan BJ. Correlates of serum alpha- and gamma-tocopherol in the Women's Health Initiative. <i>Ann Epidemiol</i> . 2001 Feb;11(2):136-44.	abstract	full
21	Wassertheil-Smoller S, Anderson G, Psaty BM, Black HR, Manson J, Wong N, Francis J, Grimm R, Kotchen T, Langer R, Lasser N. Hypertension and its treatment in postmenopausal women: Baseline data from the Women's Health Initiative. <i>Hypertension</i> . 2000 Nov;36(5):780-9.	abstract	full
108	Nelson DA, Barondess DA, Hendrix SL, Beck TJ. Cross-sectional geometry, bone strength, and bone mass in the proximal femur in black and white postmenopausal women. <i>J Bone</i>	abstract	full

	Miner Res. 2000 Oct;15(10):1992-7.		
12	Hsia J, Kemper E, Sofaer S, Bowen D, Kiefe CI, Zapka J, Mason E, Lillington L, Limacher M. Is insurance a more important determinant of healthcare access than perceived health? Evidence from the Women's Health Initiative. <i>J Womens Health Gen Based Med.</i> 2000 Oct;9(8):881-9.	abstract	full
63	Hsia J, Kemper E, Kiefe C, Zapka J, Sofaer S, Pettinger M, Bowen D, Limacher M, Lillington L, Mason E. The importance of health insurance as a determinant of cancer screening: Evidence from the Women's Health Initiative. <i>Prev Med.</i> 2000 Sep;31(3):261-70.	abstract	full
17	Valanis BG, Bowen DJ, Bassford T, Whitlock E, Charney P, Carter RA. Sexual orientation and health: Comparisons in the Women's Health Initiative sample. <i>Arch Fam Med.</i> 2000 Sep-Oct;9(9):843-53.	abstract	full
72	Jeffcoat MK, Lewis CE, Reddy MS, Wang CY, Redford M. Post-menopausal bone loss and its relationship to oral bone loss. <i>Periodontol.</i> 2000. 2000 Jun;23:94-102.	abstract	full
737	McGowan JA, Pottern L. Commentary on the Women's Health Initiative. <i>Maturitas.</i> 2000 Feb 15;34(2):109-12.	abstract	full
69	Casso D, White E, Patterson RE, Agurs-Collins T, Kooperberg C, Haines PS. Correlates of serum lycopene in older women. <i>Nutr Cancer.</i> 2000;36(2):163-169.	abstract	full
88	Assaf A, Carleton R, Miller M, Coccio E. Estimating normal hemogram values for postmenopausal women. <i>Clin J Women's Health.</i> 2000;1(1):23-28.		full
738	Anderson GL, Prentice RL. Individually randomized intervention trials for disease prevention and control. <i>Stat Methods Med Res.</i> 1999 Dec;8(4):287-309.	abstract	full
40	Mouton CP, Rovi S, Furniss K, Lasser NL. The associations between health and domestic violence in older women: Results of a pilot study. <i>J Womens Health Gen Based Med.</i> 1999 Nov;8(9):1173-9.	abstract	full
736	Vozenilek GP. Meeting the challenges of recruiting and retaining participants in clinical trials. <i>J Am Diet Assoc.</i> 1999 Oct;99(10):1190, 1192.	abstract	full
735	Patterson RE, Levy L, Tinker LF, Kristal AR. Evaluation of a simplified vitamin supplement inventory developed for the Women's Health Initiative. <i>Public Health Nutr.</i> 1999 Sep;2(3):273-6	abstract	full
24	Wang CY, Anderson GL, Prentice RL. Estimation of the correlation between nutrient intake measures under restricted sampling. <i>Biometrics.</i> 1999 Sep;55(3):711-7.	abstract	full
35	Patterson RE, Kristal AR, Tinker LF, Carter RA, Bolton MP, Agurs-Collins T. Measurement characteristics of the Women's Health Initiative food frequency questionnaire. <i>Ann Epidemiol.</i> 1999 Apr;9(3):178-87.	abstract	full
103	Rossouw JE, Hurd S. The Women's Health Initiative: Recruitment complete--looking back and looking forward. <i>J Womens Health.</i> 1999 Jan-Feb;8(1):3-5.	abstract	full
85	Johnson SR, Anderson GL, Barad DH, Stefanick ML. The Women's Health Initiative: Rationale, design, and progress report. <i>J Br Menopause Soc.</i> 1999;5:155-9.		full
60	Shumaker SA, Reboussin BA, Espeland MA, Rapp SR, McBee WL, Dailey M, Bowen D, Terrell T, Jones BN. The Women's Health Initiative Memory Study (WHIMS): A trial of the effect of estrogen therapy in preventing and slowing the progression of dementia. <i>Control Clin Trials.</i> 1998 Dec;19(6):604-21.	abstract	full
27	Bush RA, Langer RD. The effects of insurance coverage and ethnicity on mammography utilization in a postmenopausal population. <i>West J Med.</i> 1998 Apr;168(4):236-40.	abstract	full
8	The Women's Health Initiative Study Group. Design of the Women's Health Initiative clinical trial and observational study. <i>Control Clin Trials.</i> 1998 Feb;19(1):61-109.	abstract	full
71	Liu JH. The Women's Health Initiative: Goals, rationale, and current status. <i>Menopausal Medicine.</i> 1998;6(2):1-4		full
734	Mouton CP, Harris S, Rovi S, Solorzano P, Johnson MS. Barriers to black women's participation in cancer clinical trials. <i>J Natl Med Assoc.</i> 1997 Nov;89(11):721-7.	abstract	full
5	Matthews KA, Shumaker SA, Bowen DJ, Langer RD, Hunt JR, Kaplan RM, Klesges RC, Ritenbaugh C. Women's Health Initiative. Why now? What is it? What's new? <i>Am Psychol.</i> 1997 Feb;52(2):101-16.	abstract	full
9	Freedman L, Anderson G, Kipnis V, Prentice R, Wang CY, Rossouw J, Wittes J, DeMets D. Approaches to monitoring the results of long-term disease prevention trials: Examples from the Women's Health Initiative. <i>Control Clin Trials.</i> 1996 Dec;17(6):509-25.	abstract	full

6	Patterson RE, Kristal AR, Coates RJ, Tylavsky FA, Ritenbaugh C, Van Horn L, Caggiula AW, Snetselaar L. Low-fat diet practices of older women: Prevalence and implications for dietary assessment. <i>J Am Diet Assoc.</i> 1996 Jul;96(7):670-9.	abstract	full
11	Prentice R, Rossouw JR, Johnson SR, Freedman LS, McTiernan A. The role of randomized controlled trials in assessing the benefits and risks of long-term hormone replacement therapy: Example of the Women's Health Initiative. <i>Menopause.</i> 1996;3:71-76.		full
4	Tinker LF, Burrows ER, Henry H, Patterson R, Rupp J, Van Horn L. The Women's Health Initiative: Overview of the nutrition components. In: Krummel DA, Kris-Etherton PM, eds. <i>Nutrition and women's health.</i> Gaithersburg, MD: Aspen Publishers,1996:510-42.		full
732	Tinker L. The Women's Health Initiative: Be part of the answer! <i>J Am Diet Assoc.</i> 1995 Dec;95 (12):1375.	abstract	full
7	Rossouw JE, Finnegan LP, Harlan WR, Pinn VW, Clifford C, McGowan JA. The evolution of the Women's Health Initiative: Perspectives from the NIH. <i>J Am Med Womens Assoc.</i> 1995 Mar-Apr;50(2):50-5.	abstract	full
1	McTiernan A, Rossouw J, Manson J, Franzi C, Taylor V, Carleton R, Johnson S, Nevitt M. Informed consent in the Women's Health Initiative Clinical Trial and Observational Study. <i>J Womens Health.</i> 1995;4:519-29.		full
733	Assaf AR, Carleton RA. The Women's Health Initiative Clinical Trial and Observational Study: History and overview. <i>R I Med.</i> 1994 Dec;77(12):424-7.	abstract	
727	Espeland ME, Shumaker SA, Hogan PE, and Resnick SM. Women's Health Initiative Memory Study (WHIMS) Program: Emerging findings. In: Hogervorst E, Henderson VW, Gibbs RB, Brinton RD, eds. <i>Hormones, Cognition and Dementia: State of the Art and Emergent Therapeutic Strategies.</i> New York, NY: Cambridge University Press, 2009:1-10		full