

**Attachment 4i. Synthetic Turf Field Sampling Collection Form**

Study ID Number	_____
Sample Collection Date	_____
Collector ID	_____

**Crumb Rubber Samples Collection - For Metals (Plastic Containers)**

Field Location	Sample Collected	
	Yes	No
S1	Yes	No
S2	Yes	No
S3	Yes	No
S4	Yes	No
S5	Yes	No
S6	Yes	No
S7	Yes	No

**Crumb Rubber Samples Collection - For Organics (Glass Containers)**

Field Location	Sample Collected	
	Yes	No
S1	Yes	No
S2	Yes	No
S3	Yes	No
S4	Yes	No
S5	Yes	No
S6	Yes	No
S7	Yes	No

ATSDR estimates the average public reporting burden for this collection of information as 3 hours per response, including the time for reviewing instructions, searching existing data sources, gathering and maintaining the data needed, and completing and reviewing the collection of information. An agency may not conduct or sponsor, and a person is not required to respond to collection of information unless it displays a currently valid OMB control number. Send comments regarding this burden estimate or any other aspect of this collection of information, including suggestions for reducing this burden to CDC/ATSDR Reports Clearance Officer; 1600 Clifton Road, MS D-74, Atlanta, GA 30333, ATTN: PRA (0923-XXXX).

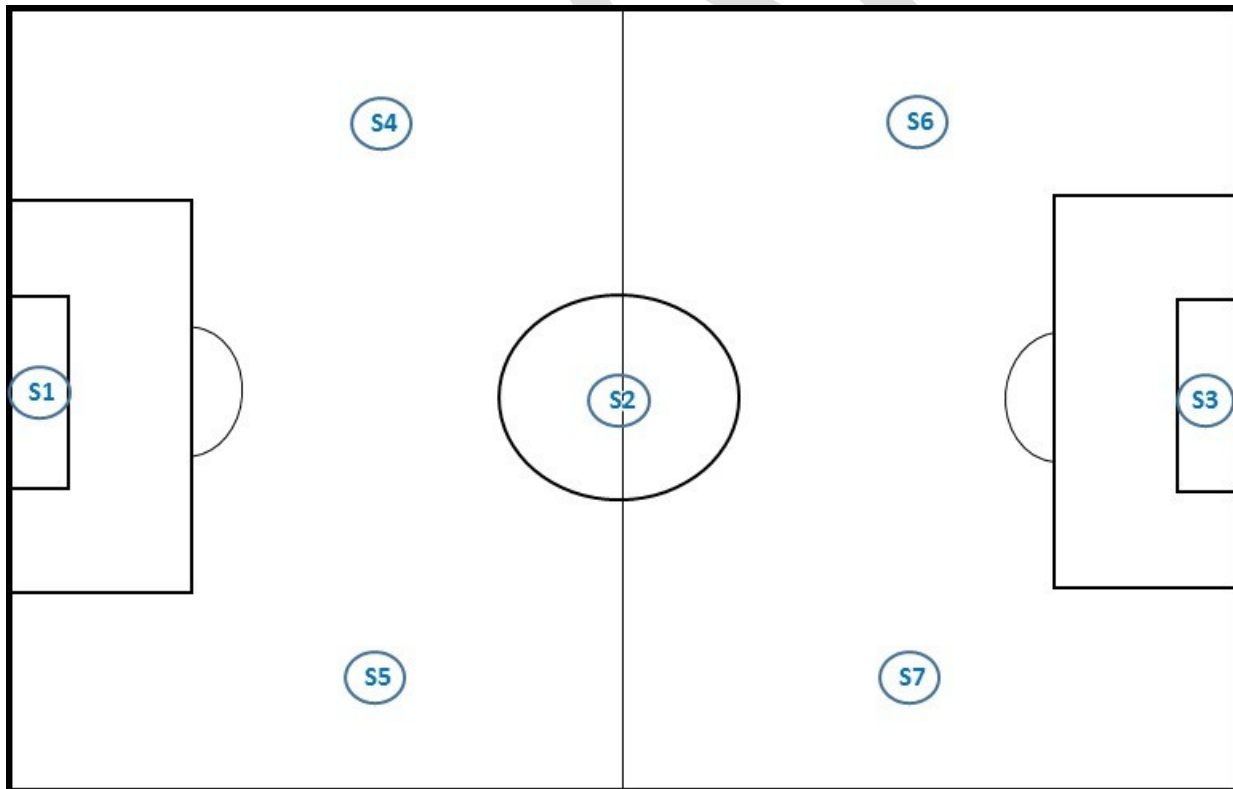
**Crumb Rubber Samples Collection - For Microbes (Sterile Plastic Containers)**

Field Location	Sample Collected	
	Yes	No
S1		
S2		
S3		
S4		
S5		
S6		
S7		

**Particle/Dust Sample Collection - For Metals (Plastic Container)**  
(collected as a combined sample across the seven locations)

Field Location	Sample Collected	
	Yes	No
S__		

**Sample Collection Locations**



**SX** = Sample Collection Locations