



# Agricultural Prices

ISSN: 1937-4216

Released September 29, 2016, by the National Agricultural Statistics Service (NASS), Agricultural Statistics Board, United States Department of Agriculture (USDA).

## Special Note

The market year average price data for canola is now being published in the September *Agricultural Prices* report rather than the November report.

## August Prices Received Index Unchanged

The August Prices Received Index (Agricultural Production), at 90.0, is unchanged from July 2016. At 85.0, the Crop Production Index increased 2.3 percent. At 94.1, the Livestock Production Index decreased 2.3 percent. Producers received higher prices for milk, calves, peaches, and cotton but lower prices for broilers, hogs, corn, and cattle. Compared with a year earlier, the Prices Received Index is down 12 percent, the Crop Production Index decreased 4.1 percent, and the Livestock Production Index is down 20 percent. In addition to prices, the indexes are influenced by the monthly mix of commodities producers market. Increased monthly movement of cattle, grapes, and calves offset the decreased marketing of wheat, soybeans, and corn. The Food Commodities Index, at 93.7, decreased 0.1 percent from the previous month and down 14 percent from August 2015.

## August Prices Paid Index Down 0.8 Percent

The August Prices Paid Index for Commodities and Services, Interest, Taxes, and Farm Wage Rates (PPITW), at 105.7, is down 0.8 percent from July 2016 and down 4.0 percent from August 2015. Lower prices in August for concentrates, nitrogen, feed grains, and complete feeds more than offset higher prices for feeder cattle, repairs, herbicides, and self-propelled machinery.

## Prices Received, Prices Paid, and Ratio of Prices Received to Prices Paid Indexes 2011 Base – United States: August 2016 with Comparisons

Index Group	August 2015 (percent)	July 2016 (percent)	August 2016 (percent)
Prices received by farmers .....	102.6	90.0	90.0
Prices paid by farmers .....	110.1	106.6	105.7
Ratio of prices received to prices paid .....	94	84	85

## Contents

Prices Received by Farmers .....	4
Prices Received Indexes, 2011 Base – United States: August 2016 with Comparisons .....	5
Prices Received Indexes, 1910-1914 Base – United States: August 2016 with Comparisons.....	5
Prices Received Indexes, 2011 Base by Month for Selected Groups – United States: 2015 and 2016 .....	5
Prices Paid Indexes, 2011 Base by Month for Selected Groups – United States: 2015 and 2016 .....	6
Received and Paid Indexes, Annual Average – United States: 2011=100 Chart.....	6
Crop Farm Received and Paid Indexes, All Items by Quarter – United States: 2011=100 Chart.....	7
Livestock Farm Received and Paid Indexes All Items by Quarter – United States: 2011=100 Chart.....	7
Received Indexes by Month, Livestock Product, All Product, and All Crop – United States: 2011=100 Chart .....	8
Received Indexes by Month, Food Grain, Feed Grain, and Oilseed – United States: 2011=100 Chart .....	8
Received Indexes by Month, Fruit & Tree Nut and Commercial Vegetable – United States: 2011=100 Chart.....	9
Received Indexes by Month, Meat Animal, Dairy Product, and Poultry & Egg – United States: 2011=100 Chart.....	9
Prices Received for Field Crops and Fruits – United States: August 2016 with Comparisons.....	10
Prices Received for Vegetables and Livestock – United States: August 2016 with Comparisons .....	11
Prices Received for Corn by Month – United States Chart.....	12
Prices Received for Wheat by Month – United States Chart .....	12
Prices Received for Upland Cotton by Month – United States Chart .....	13
Prices Received for Soybeans by Month – United States Chart .....	13
Prices Received for Cattle by Month – United States Chart .....	14
Prices Received for Milk by Month – United States Chart.....	14
Prices Received for Hogs by Month – United States Chart .....	15
Prices Received for Poultry by Month – United States Chart.....	15
Prices Received for All Wheat, Corn, and Soybeans by Month – United States: 2016 with Comparisons .....	16
Prices Received for Beef Cattle and All Hogs by Month – United States: 2016 with Comparisons .....	16
Prices Received for All Wheat – States and United States: August 2016 with Comparisons.....	17
Prices Received for Winter Wheat – States and United States: August 2016 with Comparisons.....	17
Prices Received for Durum Wheat – States and United States: August 2016 with Comparisons.....	18
Prices Received for Spring Wheat – States and United States: August 2016 with Comparisons .....	18
Prices Received for Oats – States and United States: August 2016 with Comparisons.....	18
Prices Received for All Barley – States and United States: August 2016 with Comparisons .....	19
Prices Received for Malting Barley – States and United States: August 2016 with Comparisons.....	19
Prices Received for Feed Barley – States and United States: August 2016 with Comparisons.....	19
Prices Received for Sorghum Grain – States and United States: August 2016 with Comparisons.....	19
Prices Received for Corn – States and United States: August 2016 with Comparisons .....	20
Prices Received for Soybeans – States and United States: August 2016 with Comparisons.....	20
Prices Received for Dry Beans – States and United States: August 2016 with Comparisons .....	21
Prices Received for Peanuts (in shell) – States and United States: August 2016 with Comparisons.....	21
Prices Received for Sunflower – States and United States: August 2016 with Comparisons.....	21
Prices Received for Canola – States and United States: August 2016 with Comparisons.....	21
Prices Received for Flaxseed – States and United States: August 2016 with Comparisons .....	22
Prices Received for Upland Cotton and Cottonseed – States and United States: August 2016 with Comparisons .....	22
Prices Received and Farm Marketings for Upland Cotton and Rice – United States: August 2016 with Comparisons .....	22
Prices Received for Hay by Type – States and United States: August 2016 with Comparisons .....	23
Prices Received for Apples – States and United States: August 2016 with Comparisons.....	23
Prices Received for Citrus Fruits by Utilization – States and United States: August 2015 .....	24
Prices Received for Citrus Fruits by Utilization – States and United States: July 2016.....	25
Prices Received for Citrus Fruits by Utilization – States and United States: August 2016 .....	26
Prices Received for Potatoes – States and United States: August 2016 with Comparisons.....	27
Prices Received for All Milk – States and United States: August 2016 with Comparisons .....	28
Prices Received for Milk Cows – States and United States: July 2016 with Comparisons .....	28
Parity Price Overview .....	29

Commodity Parity Prices and Price as Percent of Parity Price – United States: August 2016 with Comparisons.....	30
Commodity Parity Prices – United States: August 2016 with Comparisons .....	31
Marketing Year for Specified Commodities .....	33
Austrian Winter Peas Market Year Average Prices Received – States and United States: Marketing Years 2013 through 2015.....	34
Dry Edible Peas Market Year Average Prices Received – States and United States: Marketing Years 2013 through 2015.....	34
Lentils Market Year Average Prices Received – States and United States: Marketing Years 2013 through 2015 .....	34
Sorghum Grain Market Year Average Prices Received – States and United States: Marketing Years 2013 through 2015.....	34
Canola Market Year Average Prices Received – States and United States: Marketing Years 2013 through 2015 .....	35
Soybean Market Year Average Prices Received – States and United States: Marketing Years 2013 through 2015 .....	35
Austrian Winter Peas Prices Received and Marketing Percentages by Month – United States: Marketing Years 2013-2014 through 2015-2016 .....	36
Dry Edible Peas Prices Received and Marketing Percentages by Month – United States: Marketing Years 2013-2014 through 2015-2016 .....	36
Lentils Prices Received and Marketing Percentages by Month – United States: Marketing Years 2013-2014 through 2015-2016 .....	37
Corn Prices Received and Marketing Percentages by Month – United States: Marketing Years 2013-2014 through 2015-2016 .....	37
Sorghum Grain Prices Received by Month – States and United States: Marketing Years 2014-2015 and 2015-2016 .....	38
Canola Prices Received by Month – States and United States: Marketing Years 2014-2015 and 2015-2016 .....	39
Soybean Prices Received by Month – States and United States: Marketing Year 2014-2015 .....	40
Soybean Prices Received by Month – States and United States: Marketing Year 2015-2016 .....	41
Sorghum Grain Marketing Percentages by Month – States and United States: Marketing Years 2014-2015 and 2015-2016 .....	42
Canola Marketing Percentages by Month – States and United States: Marketing Years 2014-2015 and 2015-2016 .....	42
Soybean Marketing Percentages by Month – States and United States: Marketing Years 2014-2015 and 2015-2016 .....	43
Reliability of Prices Received Estimates .....	44
Prices Paid by Farmers.....	45
Prices Paid Indexes and Related Parity Ratios – United States: August 2016 with Comparisons.....	46
Prices Paid Indexes and Annual Weights for Input Components and Sub-components – United States: August 2016 with Comparisons .....	47
Paid Indexes by Month, All Items and Production Items – United States: 2011=100 Chart.....	48
Paid Indexes, Annual Averages, Production Items, Interest, Taxes, and Wages – United States: 2011=100 Chart .....	48
Paid Indexes by Farm Type, All Items – United States: 2011=100 Chart .....	49
Paid Indexes by Origin and Month, All Production Items – United States: 2011=100 Chart .....	49
Paid Indexes by Non-Farm Origin and Month, Chemicals, Fertilizer, and Fuels – United States: 2011=100 Chart .....	50
Paid Indexes by Non-Farm Origin and Month, Machinery and Supplies & Repairs – United States: 2011=100 Chart .....	50
Paid Indexes by Farm Origin and Month, Feed and Livestock & Poultry – United States: 2011=100 Chart .....	51
Feed Price Ratios – United States: August 2016 with Comparisons .....	52
Prices Received Used to Calculate Feed Price Ratios – United States: August 2016 with Comparisons .....	52
Prices Paid for Feeder Livestock – United States: August 2016 with Comparisons .....	52
Reliability of Prices Paid Estimates .....	53
Information Contacts .....	54

## August Prices Received by Farmers

The August Prices Received Index for agricultural production is 90.0 percent of its 2011 base, unchanged from the July 2016 index but 12 percent below the August 2015 index.

**Crop production:** The August index, at 85.0, increased 2.3 percent from July but is 4.1 percent below August 2015. The increases for other crop and fruit & tree nut indexes more than offset the decreases for vegetable & melon and grain & oilseed indexes.

**Grain and oilseed:** The August index, at 60.9, is down 2.6 percent from July and 14 percent lower than August 2015. Oilseed and feed grain index decreases more than offset the higher food grain index.

**Feed grain:** The August index, at 56.1, is down 7.7 percent from last month and 13 percent below a year ago. The corn price, at \$3.21 per bushel, is down 39 cents from last month and down 47 cents from August 2015. At \$5.49 per cwt, sorghum grain is 60 cents below July and \$2.41 below August a year earlier.

**Food grain:** At 53.9, the index for August is 1.3 percent higher than the previous month but is 26 percent below a year earlier. The August price for all wheat, at \$3.67 per bushel, is down 8 cents from July and \$1.17 below August 2015.

**Oilseed:** At 78.5, the index for August is down 2.8 percent from July but is 1.0 percent higher than August 2015. The soybean price, at \$9.93 per bushel, decreased 27 cents from July but is 22 cents above August a year earlier.

**Fruit and tree nut:** The August index, at 129.0, is up 2.0 percent from July but is 0.5 percent lower than a year earlier. Price increases during August for peaches and strawberries more than offset price decreases for grapes.

**Vegetable and melon:** At 88.7, the index for August is down 15 percent from the previous month and 16 percent below August 2015. Price decreases during August for onions and lettuce contributed the most to the decline.

**Other crop:** The August index, at 82.4, is up 5.4 percent from the previous month but is 1.6 percent below August 2015. The all hay price, at \$131.00 per ton, is unchanged from July but is \$12.00 lower than August 2015. At 67.1 cents per pound, the price for upland cotton is up 5.8 cents from July and 9.1 cents above August 2015.

**Livestock production:** The index for August, at 94.1, is 2.3 percent below the previous month and down 20 percent from August a year earlier. Compared with a year ago, prices are lower for cattle, market eggs, calves, hogs, broilers, and turkeys but higher for milk.

**Meat animal:** At 97.4, the August index is down 2.8 percent from the previous month and 21 percent lower than a year earlier. At \$52.60 per cwt, the August hog price is down \$6.80 from July and \$6.40 lower than a year earlier. The August beef cattle price of \$117.00 per cwt is down \$2.00 from the previous month and \$31.00 lower than August 2015.

**Dairy:** The index for August, at 85.1, is up 6.2 percent from the previous month and 2.4 percent higher than August a year earlier. The August all milk price of \$17.10 per cwt is up \$1.00 from July and up 40 cents from August 2015.

**Poultry and egg:** At 94.2, the August index is down 9.6 percent from July and 31 percent below August 2015. The August market egg price, at 36.7 cents per dozen, increased 0.6 cents from July but is \$2.01 below August 2015. The August broiler price, at 45.0 cents per pound, is down 7.0 cents from July and 2.0 cents below a year earlier. At 84.2 cents per pound, the August turkey price is down 2.4 cents from the previous month and down 5.5 cents from August 2015.

## Prices Received Indexes, 2011 Base – United States: August 2016 with Comparisons

[Revised historical price indexes for months not shown are available at [www.nass.usda.gov](http://www.nass.usda.gov)]

Index Group	2011 Base		
	August 2015	July 2016	August 2016
	(percent)	(percent)	(percent)
Agricultural production .....	102.6	90.0	90.0
Crop production .....	88.6	83.1	85.0
Grain and oilseed .....	70.7	62.5	60.9
Feed grain .....	64.6	60.8	56.1
Food grain .....	72.8	53.2	53.9
Oilseed .....	77.7	80.8	78.5
Fruit and tree nut .....	129.7	126.5	129.0
Vegetable and melon .....	106.1	104.7	88.7
Other crop .....	83.7	78.2	82.4
Livestock production .....	117.0	96.3	94.1
Meat animal .....	122.6	100.2	97.4
Cattle .....	132.5	103.4	102.4
Hog .....	88.7	89.3	79.1
Dairy .....	83.1	80.1	85.1
Poultry and egg .....	137.1	104.2	94.2
Food commodity .....	109.3	93.8	93.7

## Prices Received Indexes, 1910-1914 Base – United States: August 2016 with Comparisons

[Revised historical price indexes for months not shown are available at [www.nass.usda.gov](http://www.nass.usda.gov)]

Index Group	1910 - 1914 Base		
	August 2015	July 2016	August 2016
	(percent)	(percent)	(percent)
Agricultural production .....	1059	928	929
Crop production .....	773	725	741
Livestock production .....	1358	1118	1092

## Prices Received Indexes, 2011 Base by Month for Selected Groups – United States: 2015 and 2016

[Revised historical price indexes for months not shown are available at [www.nass.usda.gov](http://www.nass.usda.gov). Blank data cells indicate estimation period has not yet begun]

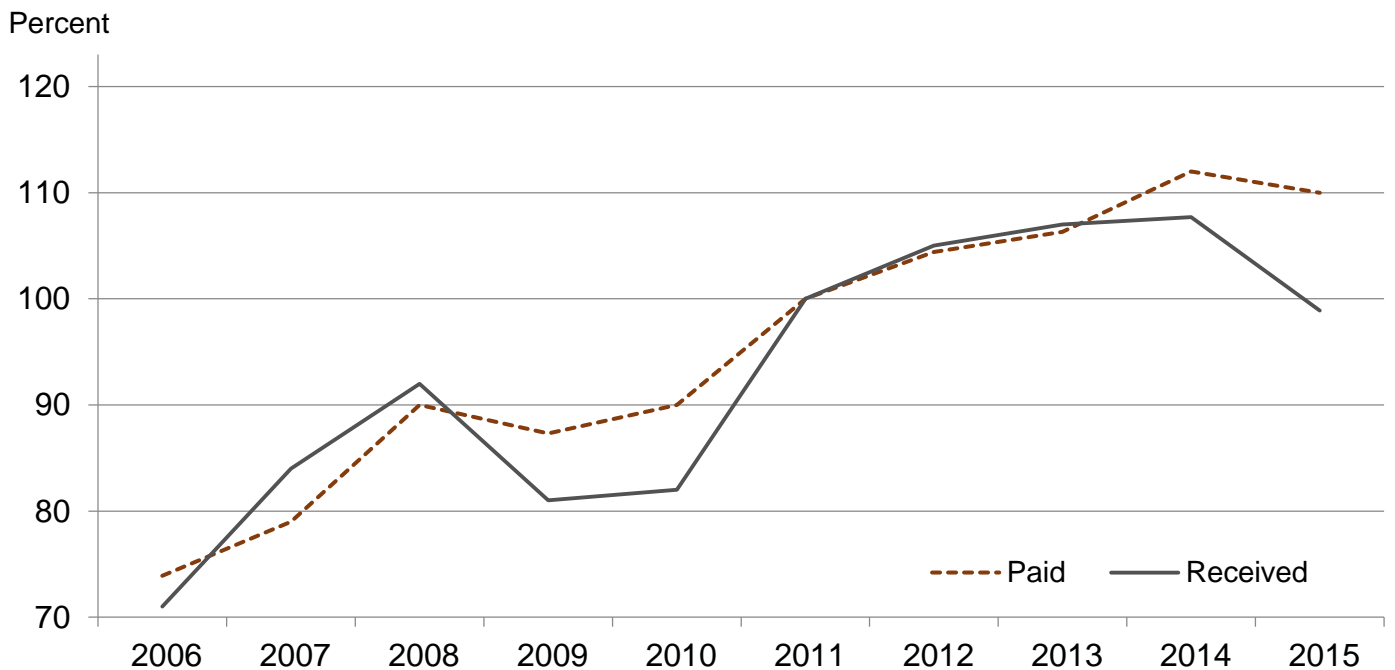
Month	2011 Base							
	Agricultural production		Crop production		Livestock production		Food commodities	
	2015	2016	2015	2016	2015	2016	2015	2016
	(percent)	(percent)	(percent)	(percent)	(percent)	(percent)	(percent)	(percent)
January .....	98.2	89.5	84.1	80.4	120.2	100.0	108.3	96.6
February .....	99.7	93.1	85.6	85.1	113.7	99.2	106.7	98.4
March .....	102.8	93.3	87.4	83.5	117.0	100.2	110.0	98.2
April .....	103.8	93.3	89.7	87.1	116.1	97.5	110.2	97.3
May .....	107.9	94.7	91.7	90.7	121.6	97.5	115.7	99.0
June .....	105.2	93.5	89.2	87.5	120.8	98.2	112.6	97.5
July .....	100.0	90.0	86.8	83.1	115.1	96.3	106.1	93.8
August .....	102.6	90.0	88.6	85.0	117.0	94.1	109.3	93.7
September .....	96.3		86.3		109.3		100.8	
October .....	89.1		80.3		104.3		93.8	
November .....	92.1		82.5		105.3		100.3	
December .....	89.6		83.6		97.2		95.4	

## Prices Paid Indexes, 2011 Base by Month for Selected Groups – United States: 2015 and 2016

[Revised historical price indexes for months not shown are available at [www.nass.usda.gov](http://www.nass.usda.gov). Blank data cells indicate estimation period has not yet begun]

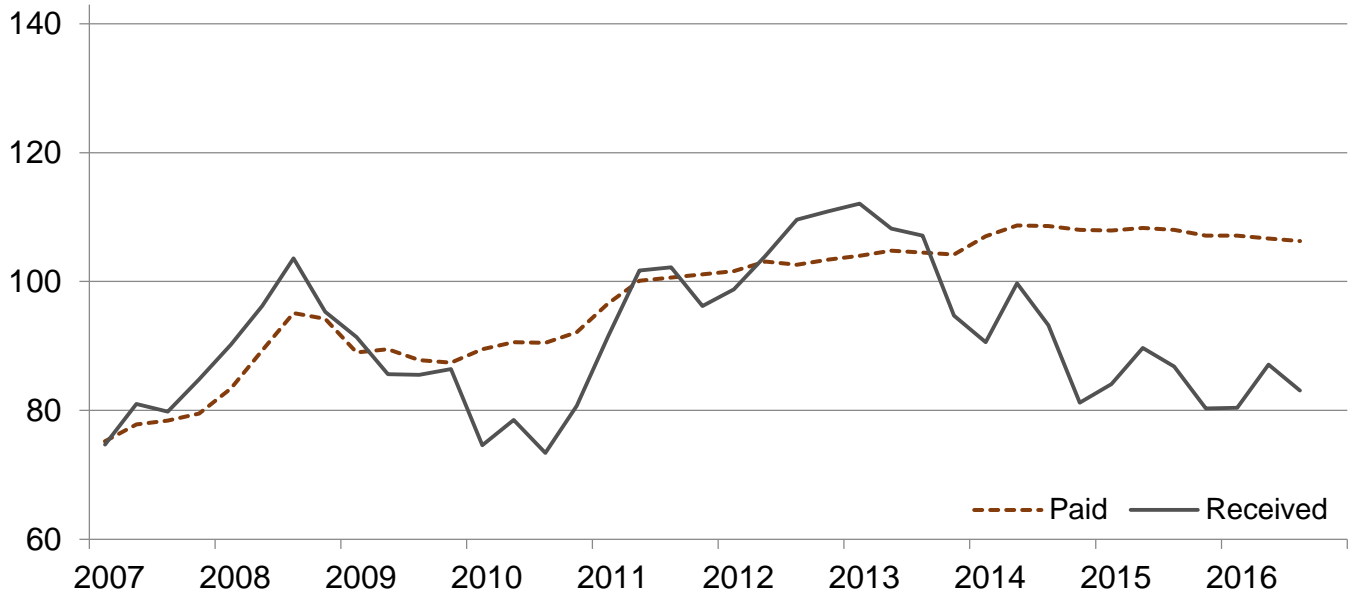
Month	2011 Base							
	All items (PPITW)		Production		Crop sector		Livestock sector	
	2015	2016	2015	2016	2015	2016	2015	2016
	(percent)	(percent)	(percent)	(percent)	(percent)	(percent)	(percent)	(percent)
January .....	111.5	107.3	112.7	106.3	107.9	107.1	115.3	107.6
February .....	111.0	106.9	112.0	105.8	108.3	106.6	114.0	107.3
March .....	111.5	107.1	112.5	105.9	108.4	106.6	114.7	107.7
April .....	111.2	106.8	112.3	105.5	108.3	106.7	114.4	106.9
May .....	111.0	107.1	112.0	105.8	108.3	106.8	113.9	107.3
June .....	111.2	107.5	112.1	106.3	108.4	107.0	114.2	108.0
July .....	110.7	106.6	111.4	105.1	108.0	106.3	113.7	106.9
August .....	110.1	105.7	110.5	103.9	107.5	105.9	112.8	105.5
September .....	108.8		108.8		107.2		110.5	
October .....	108.8		108.5		107.1		110.6	
November .....	107.6		107.0		106.6		108.7	
December .....	106.0		105.0		106.1		105.9	

## Received and Paid Indexes, Annual Average – United States: 2011=100



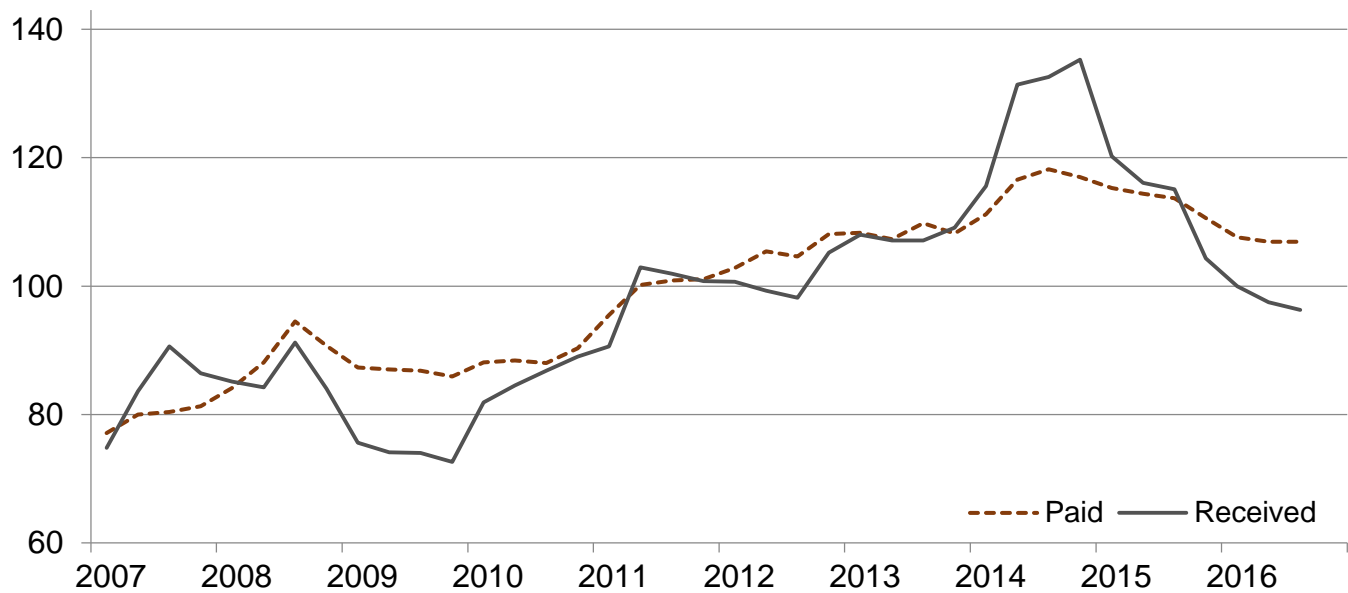
## Crop Farm Received and Paid Indexes, All Items by Quarter – United States: 2011=100

Percent

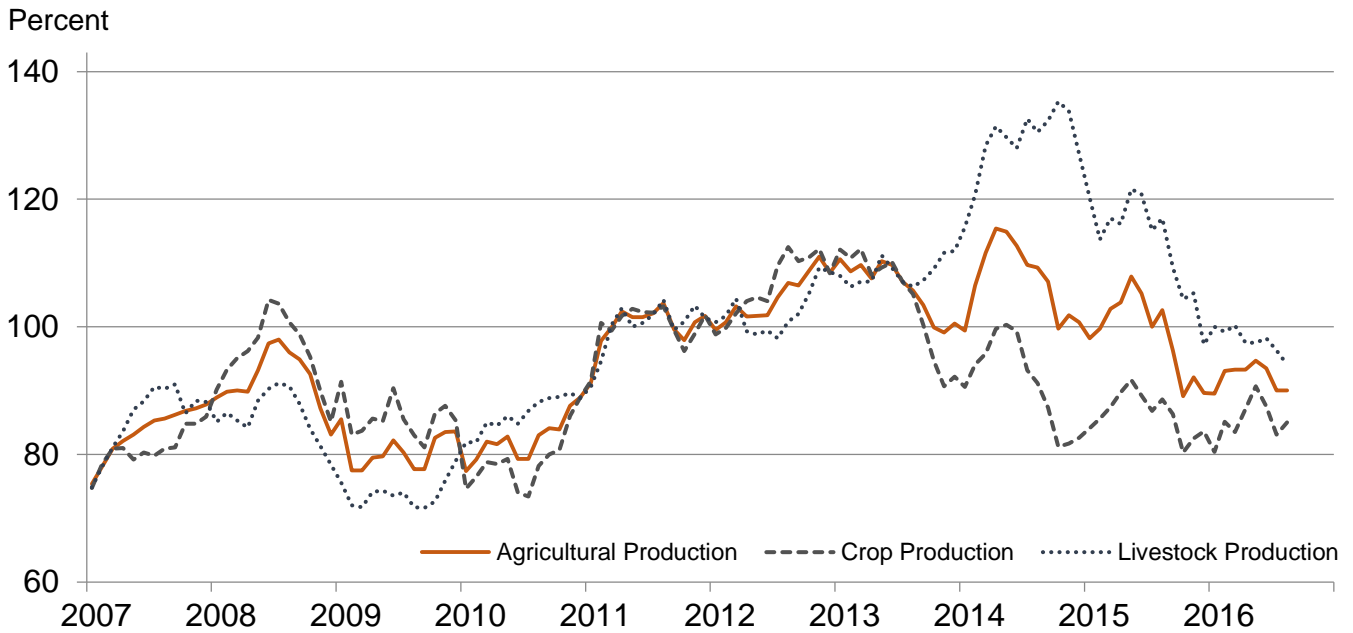


## Livestock Farm Received and Paid Indexes, All Items by Quarter – United States: 2011=100

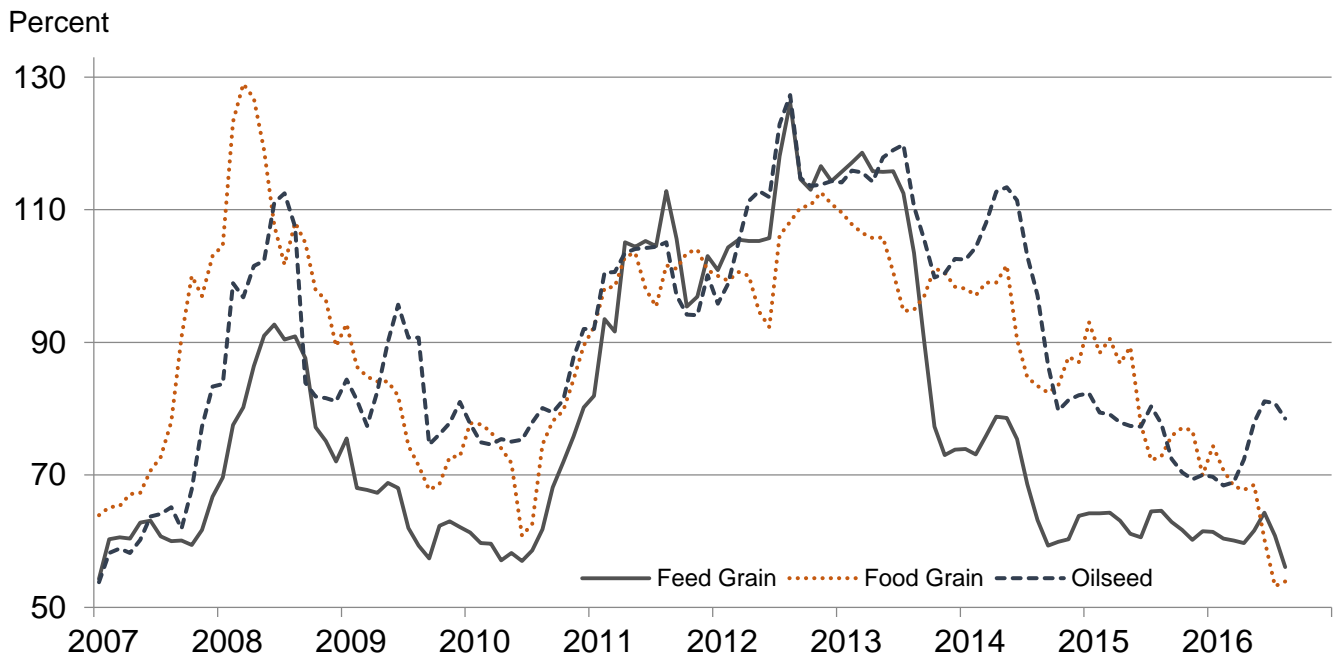
Percent



## Received Indexes by Month, Agricultural, Crop, and Livestock Production – United States: 2011=100

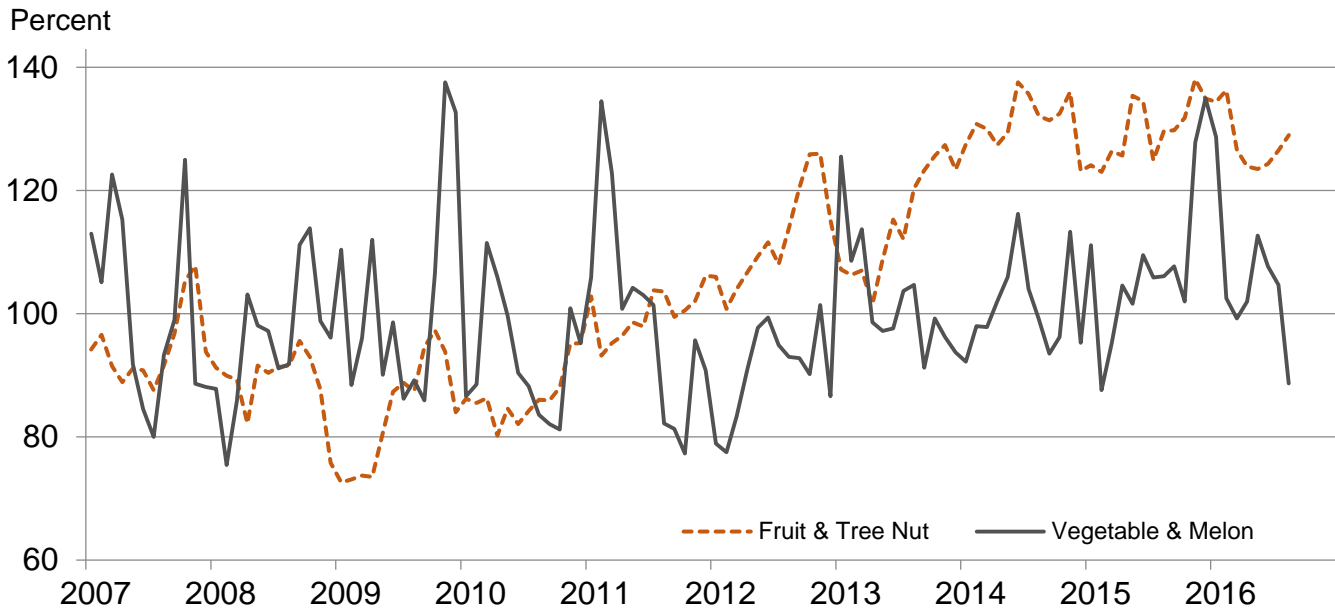


## Received Indexes by Month, Feed Grain, Food Grain, and Oilseed – United States: 2011=100

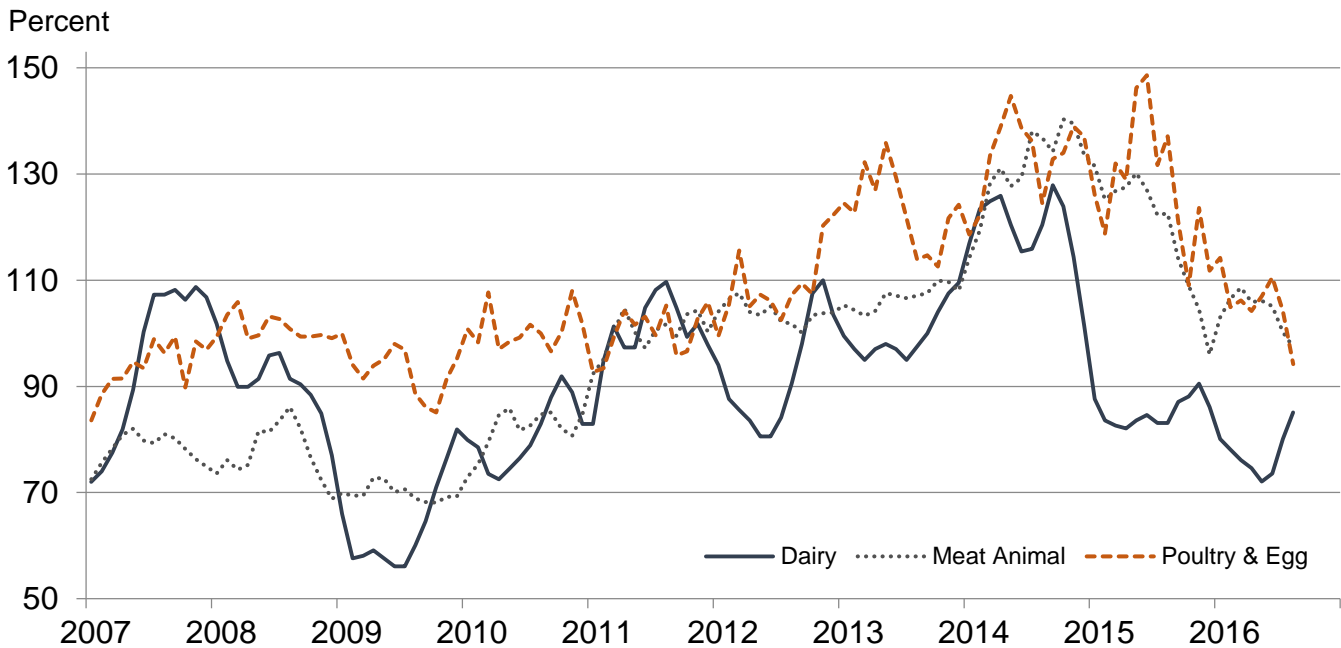




**Received Indexes by Month,  
Fruit & Tree Nut and Vegetable & Melon –  
United States: 2011=100**



**Received Indexes by Month,  
Dairy, Meat Animal, and Poultry & Egg –  
United States: 2011=100**



**Prices Received for Field Crops and Fruits – United States: August 2016 with Comparisons**

Commodity	2011 Base Price	August 2015	July 2016	August 2016	
<b>Field crops</b>					
Austrian winter peas .....	dollars/cwt	19.50	(D)	(D)	(D)
Barley, all .....	dollars/bushel	4.79	5.59	5.00	4.89
Feed .....	dollars/bushel	4.59	3.00	3.18	2.76
Malting .....	dollars/bushel	4.83	5.91	5.32	5.32
Beans, dry edible .....	dollars/cwt	34.60	29.00	31.90	29.80
Canola .....	dollars/cwt	23.10	15.60	16.60	15.80
Chickpeas, all .....	dollars/cwt	35.70	28.60	33.80	31.80
Large .....	dollars/cwt	39.20	29.30	33.90	32.60
Small .....	dollars/cwt	23.40	20.70	33.30	31.00
Corn .....	dollars/bushel	6.02	3.68	3.60	3.21
Cotton, Upland .....	dollars/pound	0.880	0.580	0.613	0.671
Cottonseed .....	dollars/ton	131.00	192.00	(NA)	176.00
Flaxseed .....	dollars/bushel	14.20	10.00	8.48	8.25
Hay, all, baled .....	dollars/ton	159.00	143.00	131.00	131.00
Alfalfa .....	dollars/ton	176.00	161.00	140.00	138.00
Other .....	dollars/ton	119.00	110.00	113.00	116.00
Lentils .....	dollars/cwt	27.50	25.80	36.50	27.20
Oats .....	dollars/bushel	3.42	2.07	1.89	1.84
Peanuts, in-shell .....	dollars/pound	0.252	0.207	0.190	0.190
Peas, dry edible .....	dollars/cwt	13.60	10.60	11.60	10.50
Potatoes .....	dollars/cwt	9.78	8.45	9.23	8.93
Rice, all .....	dollars/cwt	13.70	12.00	11.80	11.80
Long .....	dollars/cwt	12.30	10.40	10.70	10.70
Medium and short .....	dollars/cwt	18.40	18.20	14.60	14.70
Sorghum grain .....	dollars/cwt	10.70	7.90	6.09	5.49
Soybeans .....	dollars/bushel	12.50	9.71	10.20	9.93
Sunflowers, all .....	dollars/cwt	29.00	24.20	18.90	19.80
Wheat, all .....	dollars/bushel	7.44	4.84	3.75	3.67
Winter .....	dollars/bushel	6.93	4.80	3.56	3.41
Durum .....	dollars/bushel	9.22	7.28	6.47	5.59
Other spring .....	dollars/bushel	8.33	4.71	4.48	4.24
Hard red winter .....	dollars/bushel	7.07	4.55	3.32	3.15
Soft red winter .....	dollars/bushel	6.77	4.54	4.16	3.92
Hard red spring .....	dollars/bushel	8.38	4.67	4.48	4.25
White .....	dollars/bushel	6.58	6.00	4.63	4.24
<b>Fruits</b>					
Citrus, equivalent on-tree					
Grapefruit .....	dollars/box	7.47	5.63	15.26	14.85
Lemons .....	dollars/box	12.30	29.40	26.47	29.54
Oranges .....	dollars/box	8.16	12.01	8.19	8.72
Tangelos .....	dollars/box	3.50	(S)	(S)	(S)
Tangerines and mandarins .....	dollars/box	15.30	(S)	(S)	(S)
Non-citrus, fresh					
Apples <sup>1</sup> .....	dollars/pound	0.325	0.303	0.401	0.457
Grapes <sup>1</sup> .....	dollars/ton	628.00	1,470.00	1,540.00	1,390.00
Peaches <sup>1</sup> .....	dollars/ton	507.00	1,030.00	1,030.00	1,230.00
Pears <sup>1</sup> .....	dollars/ton	559.00	706.00	866.00	835.00
Strawberries .....	dollars/cwt	104.00	86.70	59.40	69.40

(D) Withheld to avoid disclosing data for individual operations.

(NA) Not available.

(S) Insufficient number of reports to establish an estimate.

<sup>1</sup> Equivalent packinghouse-door returns for California, Michigan, New York (apples only), Pennsylvania (apples only), and Washington (apples, peaches, and pears). Prices as sold for other states.

# Prices Received for Vegetables and Livestock – United States: August 2016 with Comparisons

[Price data source for livestock and poultry commodities is United States Department of Agriculture's Agricultural Marketing Service]

Commodity	2011 Base Price	August 2015	July 2016	August 2016
<b>Vegetables, fresh <sup>1</sup></b>				
Asparagus .....	dollars/cwt	37.50	(NA)	(S)
Beans, snap .....	dollars/cwt	69.00	(D)	107.00
Broccoli .....	dollars/cwt	41.60	49.90	36.40
Cantaloupes .....	dollars/cwt	16.50	25.70	20.60
Carrots .....	dollars/cwt	30.80	30.20	29.90
Cauliflower .....	dollars/cwt	47.00	42.80	41.00
Celery .....	dollars/cwt	22.50	23.50	17.70
Corn, sweet .....	dollars/cwt	30.70	29.50	29.50
Cucumbers .....	dollars/cwt	18.70	28.90	21.00
Lettuce .....	dollars/cwt	24.30	35.70	26.00
Onions <sup>2</sup> .....	dollars/cwt	11.90	15.60	26.70
Tomatoes .....	dollars/cwt	51.20	36.30	30.40
<b>Livestock</b>				
Calves .....	dollars/cwt	142.00	273.00	145.00
Cattle, all beef .....	dollars/cwt	115.00	148.00	119.00
Cows <sup>3</sup> .....	dollars/cwt	71.60	110.00	81.50
Steers and heifers .....	dollars/cwt	117.00	149.00	120.00
Milk cows <sup>4</sup> .....	dollars/head	1,420.00	(NA)	1,730.00
Hogs, all .....	dollars/cwt	66.50	59.00	59.40
Barrows and gilts .....	dollars/cwt	66.80	59.30	60.10
Sows .....	dollars/cwt	57.90	50.70	44.50
<b>Dairy and poultry</b>				
Milk, all <sup>5</sup> .....	dollars/cwt	20.10	16.70	16.10
Fat test .....	percent	3.71	3.63	3.65
Broilers, live <sup>6</sup> .....	dollars/pound	0.459	0.470	0.520
Eggs, all <sup>7</sup> .....	dollars/dozen	0.969	2.39	0.651
Market <sup>7 8</sup> .....	dollars/dozen	0.796	2.38	0.361
Turkeys, live <sup>9</sup> .....	dollars/pound	0.680	0.897	0.866
<b>Adjusted for seasonal variation</b>				
Eggs, all .....	dollars/dozen	0.979	2.15	0.62
Seasonal factor .....	percent	101	111	105
Milk, all .....	dollars/cwt	20.20	16.70	16.50
Seasonal factor .....	percent	100	100	98

(D) Withheld to avoid disclosing data for individual operations.

(NA) Not available.

(S) Insufficient number of reports to establish an estimate.

<sup>1</sup> Point of first sale.

<sup>2</sup> Includes some processing.

<sup>3</sup> Beef cows and cull dairy cows sold for slaughter.

<sup>4</sup> Animals sold for dairy herd replacement only. Prices available for January, April, July, and October.

<sup>5</sup> Before deductions for hauling. Includes quality, quantity, and other premiums. Excludes hauling subsidies.

<sup>6</sup> Live weight equivalent price.

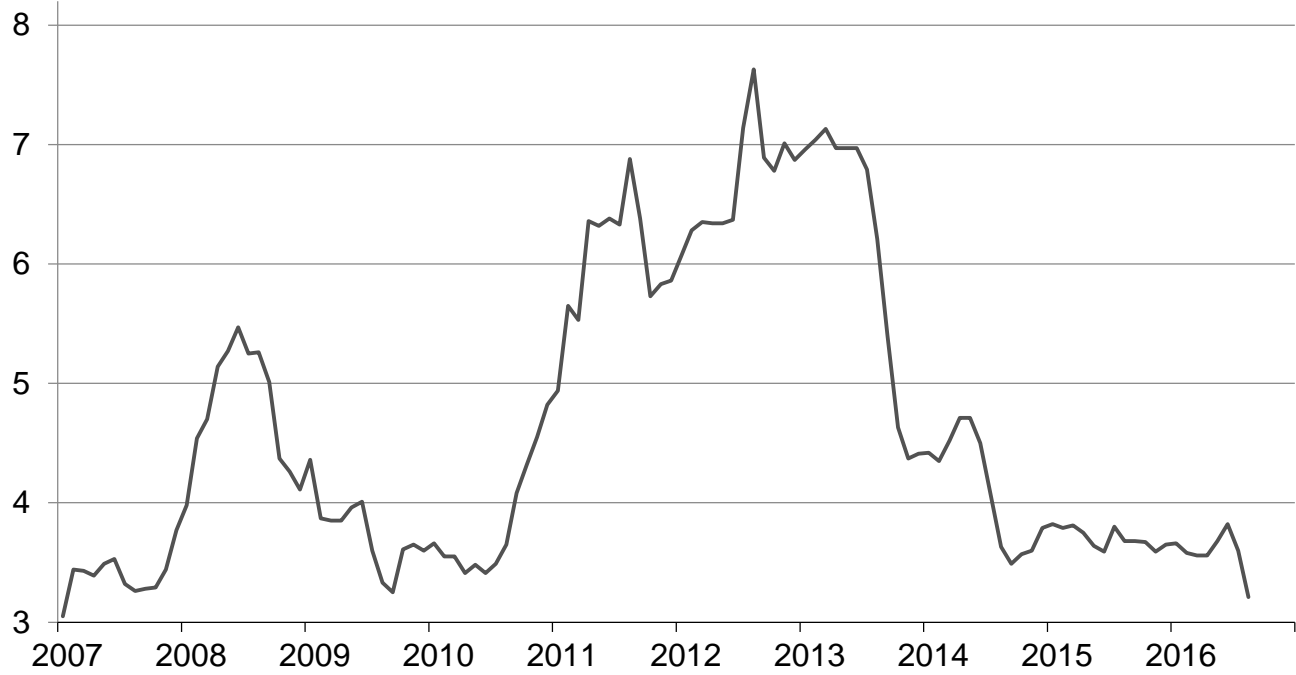
<sup>7</sup> Mid-month price.

<sup>8</sup> Also referred to as table eggs.

<sup>9</sup> Live weight equivalent price is used when actual live weight price is not available. Beginning January 2011, price reflects FOB shipping point basis. Prior year price reflects delivered basis.

## Prices Received for Corn by Month – United States

Dollars per bushel



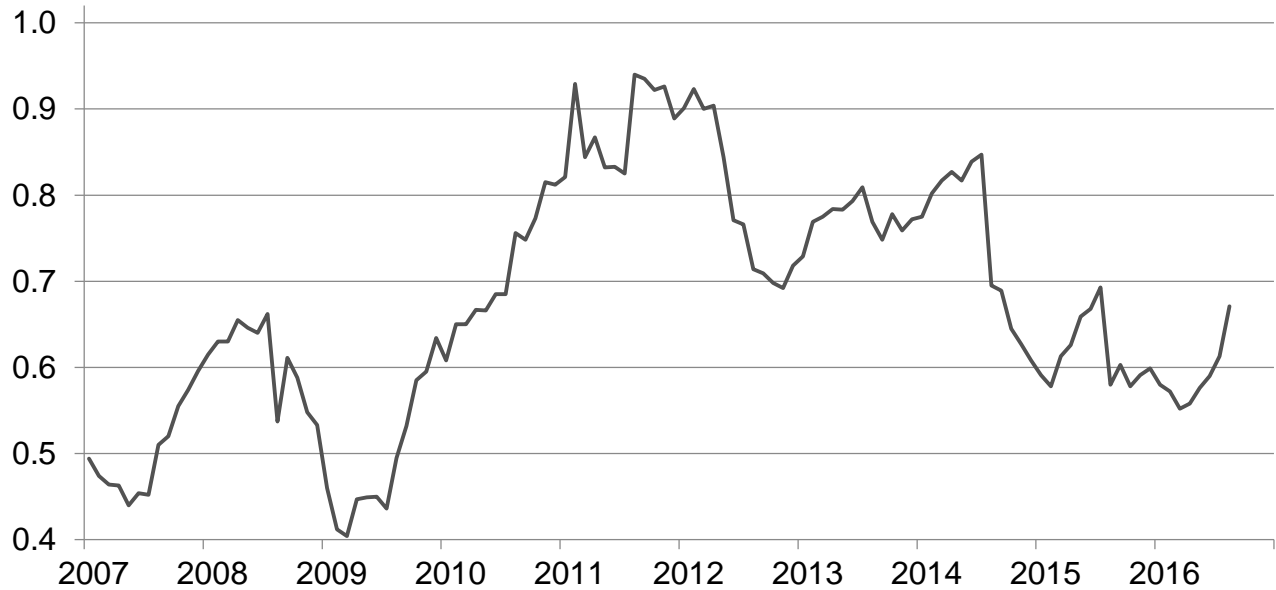
## Prices Received for Wheat by Month – United States

Dollars per bushel



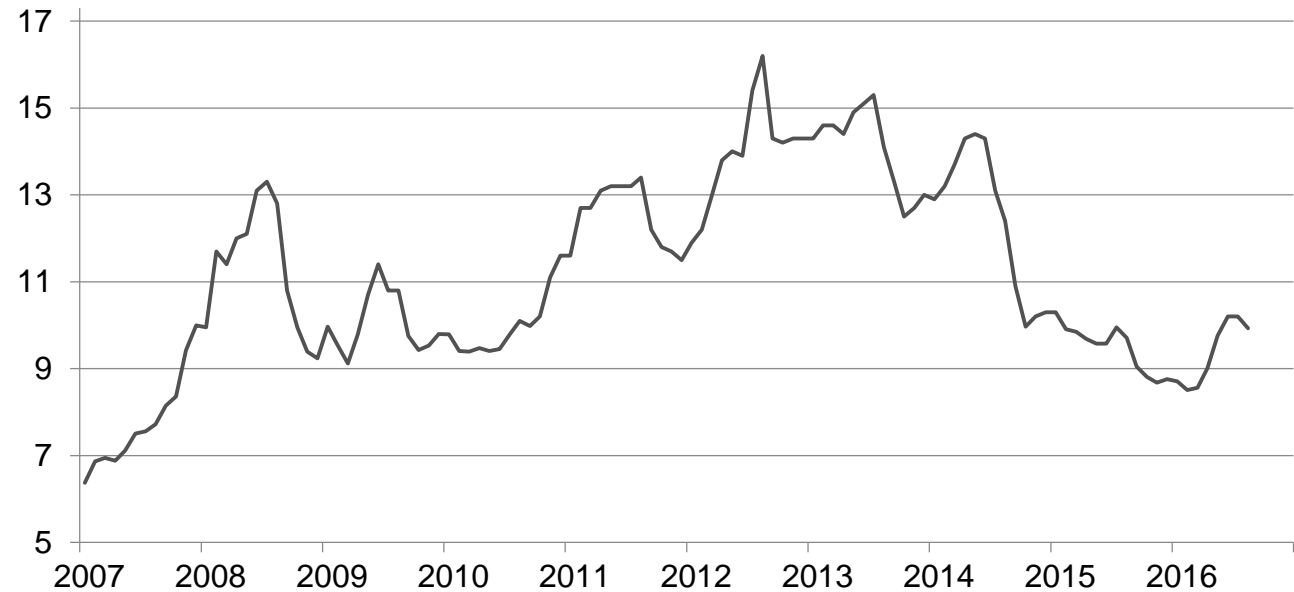
## Prices Received for Upland Cotton by Month – United States

Dollars per pound



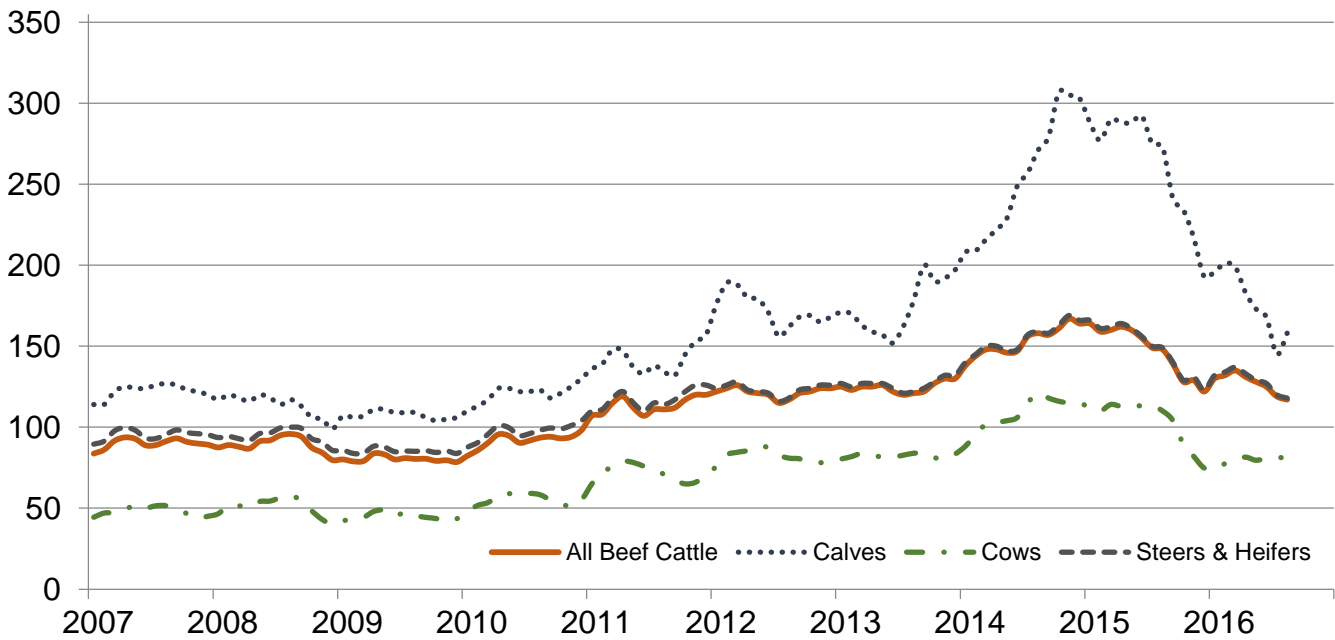
## Prices Received for Soybeans by Month – United States

Dollars per bushel



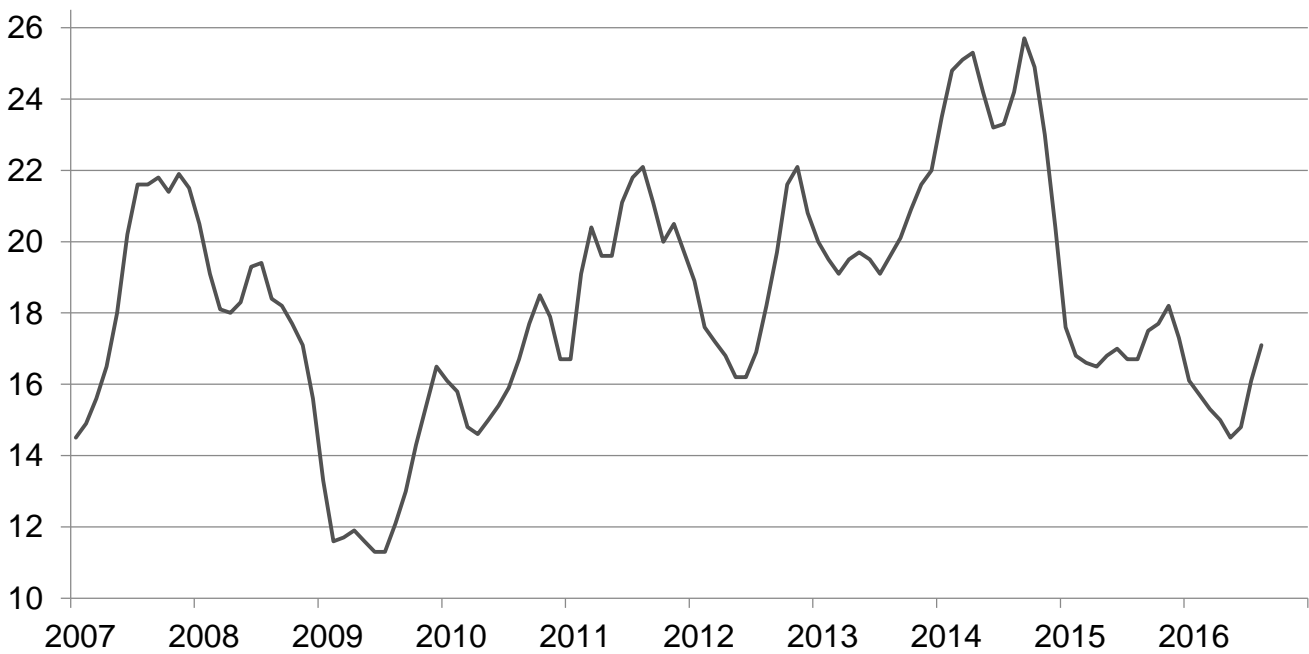
## Prices Received for Cattle by Month – United States

Dollars per cwt



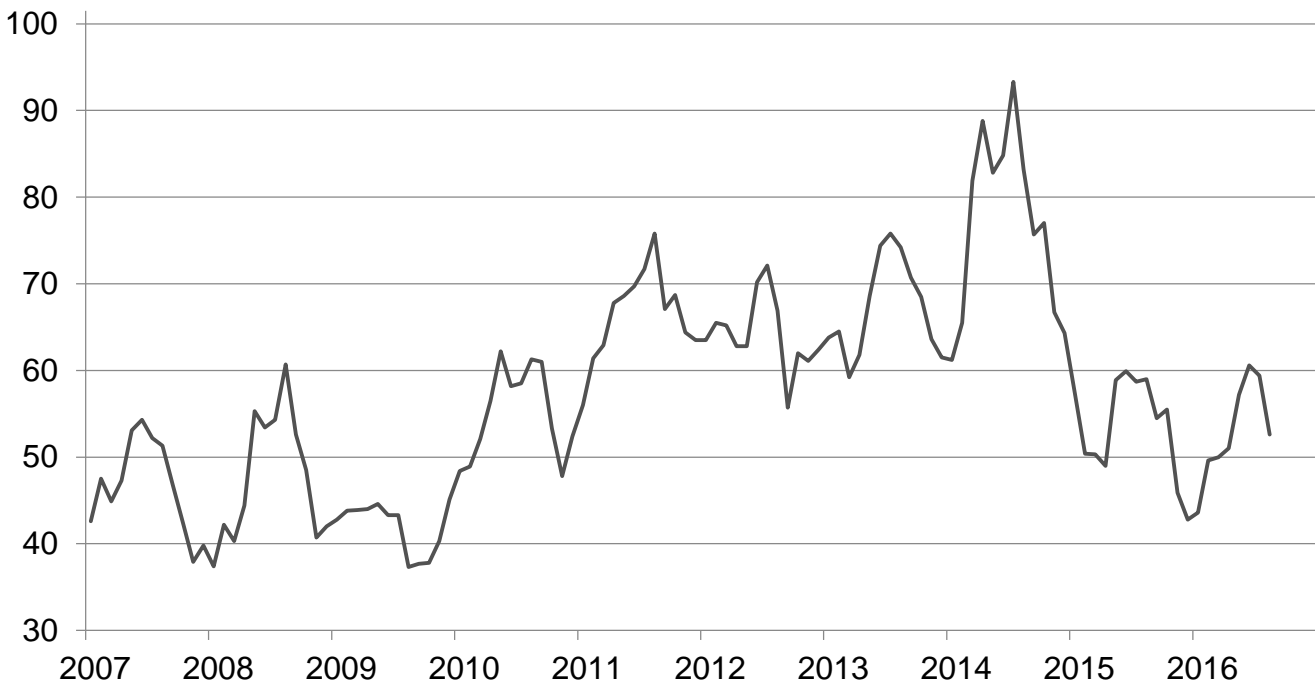
## Prices Received for Milk by Month – United States

Dollars per cwt



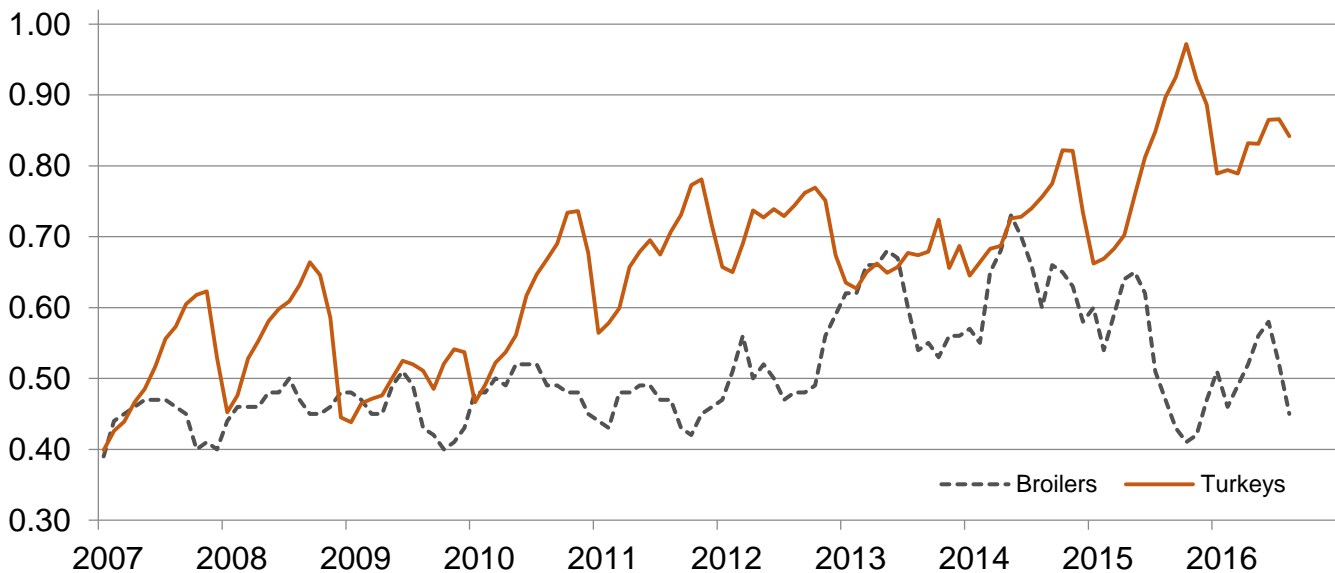
## Prices Received for Hogs by Month – United States

Dollars per cwt



## Prices Received for Poultry by Month – United States

Dollars per pound



## Prices Received for All Wheat, Corn, and Soybeans by Month – United States: 2016 with Comparisons

[Blank data cells indicate estimation period has not yet begun]

Month	All wheat			Corn			Soybeans		
	2014	2015	2016	2014	2015	2016	2014	2015	2016
	(dollars per bushel)	(dollars per bushel)	(dollars per bushel)	(dollars per bushel)	(dollars per bushel)	(dollars per bushel)	(dollars per bushel)	(dollars per bushel)	(dollars per bushel)
January .....	6.65	6.15	4.82	4.42	3.82	3.66	12.90	10.30	8.71
February .....	6.50	5.89	4.61	4.35	3.79	3.58	13.20	9.91	8.51
March .....	6.74	5.70	4.40	4.52	3.81	3.56	13.70	9.85	8.56
April .....	6.82	5.56	4.46	4.71	3.75	3.56	14.30	9.69	9.04
May .....	7.08	5.33	4.45	4.71	3.64	3.68	14.40	9.58	9.76
June .....	6.49	5.42	4.20	4.50	3.59	3.82	14.30	9.58	10.20
July .....	6.15	5.23	3.75	4.06	3.80	3.60	13.10	9.95	10.20
August .....	5.97	4.84	3.67	3.63	3.68	3.21	12.40	9.71	9.93
September .....	5.71	4.72		3.49	3.68		10.90	9.05	
October .....	5.71	4.86		3.57	3.67		9.97	8.81	
November .....	6.04	4.86		3.60	3.59		10.20	8.68	
December .....	6.14	4.75		3.79	3.65		10.30	8.76	

## Prices Received for Beef Cattle and All Hogs by Month – United States: 2016 with Comparisons

[Blank data cells indicate estimation period has not yet begun]

Month	Beef cattle <sup>1</sup>			All hogs <sup>2</sup>		
	2014	2015	2016	2014	2015	2016
	(dollars per cwt)	(dollars per cwt)	(dollars per cwt)	(dollars per cwt)	(dollars per cwt)	(dollars per cwt)
January .....	138.00	164.00	130.00	61.20	57.40	43.60
February .....	144.00	159.00	132.00	65.50	50.40	49.60
March .....	148.00	160.00	135.00	81.90	50.30	50.00
April .....	148.00	162.00	131.00	88.80	49.00	51.00
May .....	146.00	160.00	128.00	82.80	58.90	57.20
June .....	147.00	155.00	125.00	84.80	59.90	60.60
July .....	156.00	149.00	119.00	93.30	58.70	59.40
August .....	158.00	148.00	117.00	83.20	59.00	52.60
September .....	157.00	139.00		75.70	54.50	
October .....	161.00	128.00		77.00	55.50	
November .....	167.00	129.00		66.70	45.90	
December .....	164.00	122.00		64.30	42.80	

<sup>1</sup> Cows and steers & heifers.

<sup>2</sup> Barrows & gilts and sows.



### Prices Received for All Wheat – States and United States: August 2016 with Comparisons

State	August 2015	July 2016	August 2016
	(dollars per bushel)	(dollars per bushel)	(dollars per bushel)
Arizona .....	(D)	(D)	(D)
Arkansas .....	4.67	4.79	3.93
California .....	(D)	5.72	4.85
Colorado .....	4.34	3.27	3.09
Idaho .....	(D)	4.36	4.10
Illinois .....	3.19	4.04	3.79
Indiana .....	4.61	4.12	3.98
Kansas .....	4.55	3.21	3.01
Michigan .....	5.67	4.33	4.00
Minnesota .....	4.73	4.20	4.21
Missouri .....	4.21	3.91	3.66
Montana .....	4.91	4.62	4.05
Nebraska .....	4.40	3.24	2.99
North Carolina .....	4.85	4.49	4.50
North Dakota .....	4.69	4.59	4.23
Ohio .....	4.47	4.29	4.14
Oklahoma .....	4.67	3.25	3.12
Oregon .....	5.63	4.80	4.69
South Dakota .....	4.59	3.82	3.87
Texas .....	4.35	3.33	3.10
Washington .....	6.00	4.80	4.49
United States .....	4.84	3.75	3.67

(D) Withheld to avoid disclosing data for individual operations.

### Prices Received for Winter Wheat – States and United States: August 2016 with Comparisons

State	August 2015	July 2016	August 2016
	(dollars per bushel)	(dollars per bushel)	(dollars per bushel)
Arkansas .....	4.67	4.79	3.93
California .....	(D)	5.30	4.83
Colorado .....	4.34	3.27	3.09
Idaho .....	5.69	4.28	4.07
Illinois .....	3.19	4.04	3.79
Indiana .....	4.61	4.12	3.98
Kansas .....	4.55	3.21	3.01
Michigan .....	5.67	4.33	4.00
Minnesota .....	4.12	3.11	2.38
Missouri .....	4.21	3.91	3.66
Montana .....	4.80	4.18	3.73
Nebraska .....	4.40	3.24	2.99
North Carolina .....	4.85	4.49	4.50
North Dakota .....	3.69	3.28	3.23
Ohio .....	4.47	4.29	4.14
Oklahoma .....	4.67	3.25	3.12
Oregon .....	5.62	4.80	4.68
South Dakota .....	4.31	3.53	3.32
Texas .....	4.35	3.33	3.10
Washington .....	6.00	4.77	4.44
United States .....	4.80	3.56	3.41

(D) Withheld to avoid disclosing data for individual operations.

### Prices Received for Durum Wheat – States and United States: August 2016 with Comparisons

State	August 2015	July 2016	August 2016
	(dollars per bushel)	(dollars per bushel)	(dollars per bushel)
Arizona .....	(D)	(D)	(D)
California .....	(S)	(D)	(D)
Idaho .....	(D)	(D)	(D)
Montana .....	(D)	6.36	(D)
North Dakota .....	6.96	6.25	5.45
United States .....	7.28	6.47	5.59

(D) Withheld to avoid disclosing data for individual operations.

(S) Insufficient number of reports to establish an estimate.

### Prices Received for Spring Wheat – States and United States: August 2016 with Comparisons

State	August 2015	July 2016	August 2016
	(dollars per bushel)	(dollars per bushel)	(dollars per bushel)
Colorado .....	(D)	(D)	(D)
Idaho .....	(D)	4.55	4.16
Minnesota .....	4.75	4.21	4.22
Montana .....	4.69	4.75	4.36
North Dakota .....	4.54	4.38	4.17
Oregon .....	5.69	4.81	4.73
South Dakota .....	4.70	4.42	4.41
Washington .....	6.01	4.99	4.79
United States .....	4.71	4.48	4.24

(D) Withheld to avoid disclosing data for individual operations.

### Prices Received for Oats – States and United States: August 2016 with Comparisons

State	August 2015	July 2016	August 2016
	(dollars per bushel)	(dollars per bushel)	(dollars per bushel)
Illinois .....	2.31	2.50	1.79
Iowa .....	2.50	2.32	2.37
Michigan .....	1.91	2.21	1.79
Minnesota .....	2.01	1.83	2.00
Montana .....	(S)	(D)	(D)
Nebraska .....	2.45	1.71	2.23
New York .....	2.41	2.82	2.19
North Dakota .....	1.87	1.83	1.93
Oregon .....	(S)	(S)	(S)
Pennsylvania .....	3.56	2.77	2.44
South Dakota .....	2.20	1.84	1.77
Texas .....	(S)	(S)	(S)
Wisconsin .....	1.79	1.69	1.47
United States .....	2.07	1.89	1.84

(D) Withheld to avoid disclosing data for individual operations.

(S) Insufficient number of reports to establish an estimate.

### Prices Received for All Barley – States and United States: August 2016 with Comparisons

State	August 2015	July 2016	August 2016
	(dollars per bushel)	(dollars per bushel)	(dollars per bushel)
California .....	(D)	4.11	(D)
Colorado .....	5.98	5.45	4.67
Idaho .....	5.99	5.19	5.18
Minnesota .....	5.58	(D)	2.88
Montana .....	5.78	5.22	5.28
North Dakota .....	4.74	4.75	4.00
Oregon <sup>1</sup> .....	3.34	(NA)	(NA)
Utah <sup>1</sup> .....	(D)	(NA)	(NA)
Washington .....	3.65	2.95	3.04
Wyoming .....	6.03	(D)	5.47
United States .....	5.59	5.00	4.89

(D) Withheld to avoid disclosing data for individual operations.

(NA) Not available.

<sup>1</sup> Monthly estimates discontinued in July 2016.

### Prices Received for Malting Barley – States and United States: August 2016 with Comparisons

State	August 2015	July 2016	August 2016
	(dollars per bushel)	(dollars per bushel)	(dollars per bushel)
Idaho .....	6.20	5.53	5.34
Minnesota .....	5.57	(D)	(D)
Montana .....	6.14	5.45	5.36
North Dakota .....	5.02	5.10	4.88
Wyoming .....	6.13	(D)	5.50
United States .....	5.91	5.32	5.32

(D) Withheld to avoid disclosing data for individual operations.

### Prices Received for Feed Barley – States and United States: August 2016 with Comparisons

State	August 2015	July 2016	August 2016
	(dollars per bushel)	(dollars per bushel)	(dollars per bushel)
Idaho .....	2.92	2.96	2.90
Minnesota .....	(D)	2.48	2.26
Montana .....	2.76	2.63	2.66
North Dakota .....	2.45	2.60	2.53
Wyoming .....	(D)	(D)	(D)
United States .....	3.00	3.18	2.76

(D) Withheld to avoid disclosing data for individual operations.

### Prices Received for Sorghum Grain – States and United States: August 2016 with Comparisons

State	August 2015	July 2016	August 2016
	(dollars per cwt)	(dollars per cwt)	(dollars per cwt)
Arkansas .....	7.93	(D)	4.86
Illinois .....	(S)	(D)	(D)
Kansas .....	6.84	5.07	4.50
Louisiana .....	8.02	(D)	6.13
Missouri .....	6.97	5.82	5.27
Nebraska .....	6.91	5.66	5.34
Oklahoma .....	6.38	6.53	4.61
Texas .....	7.96	6.18	5.70
United States .....	7.90	6.09	5.49

(D) Withheld to avoid disclosing data for individual operations.

(S) Insufficient number of reports to establish an estimate.

**Prices Received for Corn – States and United States: August 2016 with Comparisons**

State	August 2015	July 2016	August 2016
	(dollars per bushel)	(dollars per bushel)	(dollars per bushel)
Colorado .....	3.82	3.64	3.43
Illinois .....	3.63	3.63	3.17
Indiana .....	3.90	3.89	3.54
Iowa .....	3.67	3.55	3.08
Kansas .....	3.80	3.44	3.25
Kentucky .....	4.06	3.91	3.59
Michigan .....	3.69	3.77	3.45
Minnesota .....	3.46	3.47	3.04
Missouri .....	3.70	3.59	3.31
Nebraska .....	3.72	3.63	3.19
North Carolina .....	4.31	4.49	4.09
North Dakota .....	3.29	3.42	3.10
Ohio .....	3.94	3.81	3.57
Pennsylvania .....	4.08	4.21	3.97
South Dakota .....	3.38	3.39	3.07
Tennessee .....	3.94	4.20	3.64
Texas .....	4.26	3.84	3.39
Wisconsin .....	3.67	3.52	3.12
United States .....	3.68	3.60	3.21

**Prices Received for Soybeans – States and United States: August 2016 with Comparisons**

State	August 2015	July 2016	August 2016
	(dollars per bushel)	(dollars per bushel)	(dollars per bushel)
Arkansas .....	9.80	10.30	10.40
Illinois .....	9.77	10.50	10.20
Indiana .....	10.00	10.70	10.30
Iowa .....	9.49	10.10	9.77
Kansas .....	9.29	10.40	9.73
Kentucky .....	9.95	10.60	10.20
Louisiana .....	9.96	10.70	9.94
Michigan .....	10.40	10.30	10.10
Minnesota .....	9.65	10.00	9.76
Mississippi .....	10.10	10.50	9.86
Missouri .....	9.80	10.50	10.20
Nebraska .....	9.37	10.10	9.65
North Carolina .....	9.39	10.40	9.92
North Dakota .....	8.93	9.59	9.49
Ohio .....	10.20	10.60	10.30
South Dakota .....	9.12	9.66	9.41
Tennessee .....	9.84	10.30	9.85
Wisconsin .....	9.57	10.30	9.84
United States .....	9.71	10.20	9.93

### Prices Received for Dry Beans – States and United States: August 2016 with Comparisons

State	August 2015	July 2016	August 2016
	(dollars per cwt)	(dollars per cwt)	(dollars per cwt)
California .....	59.00	(D)	(D)
Colorado .....	22.30	29.20	27.40
Idaho .....	28.70	(D)	29.90
Michigan .....	(D)	31.20	33.70
Minnesota .....	23.60	31.20	30.40
Nebraska .....	20.60	(D)	(D)
North Dakota .....	23.00	30.70	27.20
United States .....	29.00	31.90	29.80

(D) Withheld to avoid disclosing data for individual operations.

### Prices Received for Peanuts (in shell) – States and United States: August 2016 with Comparisons

State	August 2015	July 2016	August 2016
	(dollars per pound)	(dollars per pound)	(dollars per pound)
Alabama .....	0.212	0.181	0.181
Arkansas <sup>1</sup> .....	(NA)	(NA)	0.182
Florida .....	0.176	0.192	0.181
Georgia .....	0.207	0.191	0.195
Mississippi .....	(S)	0.172	0.172
New Mexico .....	(S)	(S)	(S)
North Carolina .....	0.263	(D)	(D)
Oklahoma .....	0.264	0.217	0.205
South Carolina .....	0.235	0.196	0.133
Texas .....	0.184	0.194	0.201
Virginia .....	(S)	(S)	(S)
United States .....	0.207	0.190	0.190

(D) Withheld to avoid disclosing data for individual operations.

(NA) Not available.

(S) Insufficient number of reports to establish an estimate.

<sup>1</sup> Monthly estimates began in August 2016.

### Prices Received for Sunflower – States and United States: August 2016 with Comparisons

State	August 2015	July 2016	August 2016
	(dollars per cwt)	(dollars per cwt)	(dollars per cwt)
Colorado .....	(D)	(S)	(S)
Kansas .....	(D)	(D)	(D)
Minnesota .....	25.10	21.10	22.40
North Dakota .....	26.70	20.10	22.30
South Dakota .....	28.30	17.70	17.90
United States .....	24.20	18.90	19.80

(D) Withheld to avoid disclosing data for individual operations.

(S) Insufficient number of reports to establish an estimate.

### Prices Received for Canola – States and United States: August 2016 with Comparisons

State	August 2015	July 2016	August 2016
	(dollars per cwt)	(dollars per cwt)	(dollars per cwt)
Minnesota .....	(D)	(D)	(D)
North Dakota .....	15.60	16.60	15.80
United States .....	15.60	16.60	15.80

(D) Withheld to avoid disclosing data for individual operations.

## Prices Received for Flaxseed – States and United States: August 2016 with Comparisons

State	August 2015	July 2016	August 2016
	(dollars per bushel)	(dollars per bushel)	(dollars per bushel)
North Dakota .....	10.00	8.48	8.25
United States .....	10.00	8.48	8.25

## Prices Received for Upland Cotton and Cottonseed – States and United States: August 2016 with Comparisons

[Cottonseed marketing year August - February]

State	Cotton, Upland			Cottonseed		
	August 2015	July 2016	August 2016	August 2015	July 2016	August 2016
	(dollars per pound)	(dollars per pound)	(dollars per pound)	(dollars per ton)	(dollars per ton)	(dollars per ton)
Alabama .....	(D)	(D)	(S)	(NA)	(NA)	(NA)
Arizona .....	(S)	(D)	(S)	(NA)	(NA)	(NA)
Arkansas .....	(S)	(D)	(S)	(NA)	(NA)	(NA)
California .....	(D)	(D)	(S)	(NA)	(NA)	(NA)
Georgia .....	(D)	0.618	(S)	(NA)	(NA)	(NA)
Louisiana .....	(S)	(D)	(S)	(NA)	(NA)	(NA)
Mississippi .....	(S)	(D)	(D)	(NA)	(NA)	(NA)
North Carolina .....	(D)	(D)	(D)	(NA)	(NA)	(NA)
Tennessee .....	(D)	0.597	(S)	(NA)	(NA)	(NA)
Texas .....	(D)	0.622	0.671	192.00	(NA)	176.00
United States .....	0.580	0.613	0.671	192.00	(NA)	176.00

(D) Withheld to avoid disclosing data for individual operations.

(NA) Not available.

(S) Insufficient number of reports to establish an estimate.

## Prices Received and Farm Marketings for Upland Cotton and Rice – United States: August 2016 with Comparisons

Item	August 2015	July 2016	August 2016
Cotton, Upland			
Average price ..... dollars/pound	0.580	0.613	0.671
Marketings <sup>1</sup> ..... 1,000 bales	571	306	305
Rice, all			
Average price ..... dollars/cwt	12.00	11.80	11.80
Marketings <sup>2</sup> ..... 1,000 cwt	10,973	13,423	8,307
Rice, long			
Average price ..... dollars/cwt	10.40	10.70	10.70
Marketings <sup>2</sup> ..... 1,000 cwt	8,646	9,465	6,068
Rice, medium and short			
California			
Average price ..... dollars/cwt	20.80	17.30	16.60
Other States <sup>3</sup>			
Average price ..... dollars/cwt	12.90	10.10	10.00
United States			
Average price ..... dollars/cwt	18.20	14.60	14.70
Marketings <sup>2</sup> ..... 1,000 cwt	2,327	3,958	2,239

<sup>1</sup> Marketings based on a survey of cotton buyers in the major producing States - Alabama, Arizona, Arkansas, California, Georgia, Louisiana, Mississippi, North Carolina, Tennessee, and Texas.

<sup>2</sup> Purchases by private firms and rice (rough equivalent) shipped by cooperatives.

<sup>3</sup> Other States include Arkansas, Louisiana, Mississippi, Missouri, and Texas.

## Prices Received for Hay by Type – States and United States: August 2016 with Comparisons

State	All hay			Alfalfa hay			Other hay		
	August 2015	July 2016	August 2016	August 2015	July 2016	August 2016	August 2015	July 2016	August 2016
	(dollars per ton)	(dollars per ton)	(dollars per ton)	(dollars per ton)	(dollars per ton)	(dollars per ton)	(dollars per ton)	(dollars per ton)	(dollars per ton)
Arizona .....	144.00	140.00	140.00	140.00	140.00	140.00	180.00	160.00	160.00
California .....	157.00	141.00	140.00	165.00	145.00	145.00	135.00	125.00	125.00
Colorado .....	190.00	151.00	151.00	190.00	150.00	150.00	195.00	160.00	160.00
Idaho .....	164.00	140.00	131.00	165.00	140.00	130.00	150.00	140.00	140.00
Illinois .....	135.00	134.00	136.00	160.00	160.00	160.00	105.00	95.00	90.00
Iowa .....	110.00	89.00	88.00	115.00	96.00	93.00	85.00	78.00	71.00
Kansas .....	106.00	88.00	87.00	122.00	94.00	93.00	78.00	82.00	80.00
Kentucky .....	141.00	139.00	145.00	210.00	220.00	220.00	105.00	110.00	110.00
Michigan .....	155.00	126.00	140.00	170.00	140.00	155.00	120.00	100.00	110.00
Minnesota .....	68.00	61.00	58.00	76.00	73.00	69.00	57.00	49.00	46.00
Missouri .....	92.00	94.00	91.00	165.00	155.00	155.00	80.00	85.00	80.00
Montana .....	133.00	128.00	133.00	135.00	130.00	135.00	125.00	120.00	125.00
Nebraska .....	90.00	85.00	80.00	92.00	87.00	83.00	84.00	81.00	73.00
Nevada .....	164.00	151.00	158.00	160.00	152.00	160.00	215.00	140.00	135.00
New Mexico .....	206.00	161.00	160.00	215.00	165.00	165.00	160.00	140.00	130.00
New York .....	157.00	170.00	191.00	166.00	195.00	216.00	156.00	163.00	187.00
North Dakota .....	80.00	76.00	78.00	87.00	80.00	80.00	60.00	63.00	67.00
Ohio .....	130.00	150.00	132.00	140.00	200.00	170.00	120.00	120.00	100.00
Oklahoma .....	75.00	101.00	101.00	153.00	144.00	146.00	67.00	71.00	73.00
Oregon .....	192.00	181.00	177.00	200.00	165.00	175.00	180.00	195.00	180.00
Pennsylvania .....	196.00	159.00	182.00	205.00	163.00	182.00	192.00	158.00	182.00
South Dakota .....	102.00	89.00	86.00	106.00	91.00	88.00	85.00	81.00	74.00
Texas .....	92.00	120.00	125.00	205.00	176.00	178.00	59.00	96.00	105.00
Utah .....	159.00	130.00	130.00	160.00	130.00	130.00	130.00	100.00	100.00
Washington .....	183.00	149.00	146.00	180.00	140.00	140.00	190.00	165.00	160.00
Wisconsin .....	100.00	70.00	70.00	111.00	80.00	79.00	54.00	46.00	46.00
Wyoming .....	117.00	121.00	125.00	120.00	125.00	130.00	105.00	110.00	110.00
United States ...	143.00	131.00	131.00	161.00	140.00	138.00	110.00	113.00	116.00

## Prices Received for Apples – States and United States: August 2016 with Comparisons

[Equivalent packinghouse-door returns for California, Michigan, New York, Pennsylvania, and Washington. Prices at point of first sale for other States]

State	Apples, fresh use		
	August 2015	July 2016	August 2016
	(dollars per pound)	(dollars per pound)	(dollars per pound)
California .....	0.440	0.621	0.564
Michigan .....	(S)	(S)	(S)
New York .....	(S)	(S)	(S)
Pennsylvania .....	0.300	(S)	0.447
Virginia .....	0.230	(S)	0.270
Washington .....	0.288	0.400	0.447
United States .....	0.303	0.401	0.457

(S) Insufficient number of reports to establish an estimate.

## Prices Received for Citrus Fruits by Utilization – States and United States: August 2015

[Net pounds per box: grapefruit in California-80, Florida-85, Texas-80; lemons-80; oranges in California-80, Florida-90, Texas-85; tangelos-90; tangerines and mandarins in California-80, Florida-95]

Commodity, State, and type	FOB packed fresh	Equivalent returns					
		Packinghouse door			On-tree		
		All	Fresh	Process	All	Fresh	Process
	(dollars per box)	(dollars per box)	(dollars per box)	(dollars per box)	(dollars per box)	(dollars per box)	(dollars per box)
<b>Grapefruit</b>							
California .....	(D)	8.48	(D)	(D)	5.63	(D)	(D)
Florida, all .....	(S)	(S)	(S)	(S)	(S)	(S)	(S)
White .....	(S)	(S)	(S)	(S)	(S)	(S)	(S)
Red .....	(S)	(S)	(S)	(S)	(S)	(S)	(S)
Texas .....	(S)	(S)	(S)	(S)	(S)	(S)	(S)
United States .....	(D)	8.48	(D)	(D)	5.63	(D)	(D)
<b>Lemons</b>							
Arizona .....	(S)	(S)	(S)	(S)	(S)	(S)	(S)
California .....	55.30	35.34	45.66	(D)	29.40	39.40	(D)
United States .....	55.30	35.34	45.66	(D)	29.40	39.40	(D)
<b>Oranges</b>							
California, all .....	28.30	14.83	18.95	(D)	12.17	16.34	(D)
Navel and miscellaneous .....	(S)	(S)	(S)	(S)	(S)	(S)	(S)
Valencia .....	28.30	14.83	18.95	(D)	12.17	16.34	(D)
Florida, all .....	(S)	(S)	(S)	(S)	(S)	(S)	(S)
Early and mids .....	(S)	(S)	(S)	(S)	(S)	(S)	(S)
Valencia .....	(S)	(S)	(S)	(S)	(S)	(S)	(S)
United States .....	28.30	14.69	18.92	(D)	12.01	16.31	(D)
<b>Tangelos</b>							
Florida .....	(S)	(S)	(S)	(S)	(S)	(S)	(S)
United States .....	(S)	(S)	(S)	(S)	(S)	(S)	(S)
<b>Tangerines and mandarins</b>							
Arizona .....	(S)	(S)	(S)	(S)	(S)	(S)	(S)
California .....	(S)	(S)	(S)	(S)	(S)	(S)	(S)
Florida .....	(S)	(S)	(S)	(S)	(S)	(S)	(S)
United States .....	(S)	(S)	(S)	(S)	(S)	(S)	(S)

(D) Withheld to avoid disclosing data for individual operations.

(S) Insufficient number of reports to establish an estimate.



## Prices Received for Citrus Fruits by Utilization – States and United States: July 2016

[Net pounds per box: grapefruit in California-80, Florida-85, Texas-80; lemons-80; oranges in California-80, Florida-90, Texas-85; tangelos-90; tangerines and mandarins in California-80, Florida-95]

Commodity, State, and type	FOB packed fresh	Equivalent returns					
		Packinghouse door			On-tree		
		All	Fresh	Process	All	Fresh	Process
	(dollars per box)	(dollars per box)	(dollars per box)	(dollars per box)	(dollars per box)	(dollars per box)	(dollars per box)
<b>Grapefruit</b>							
California .....	(D)	17.83	(D)	(D)	15.26	(D)	(D)
Florida, all .....	(S)	(S)	(S)	(S)	(S)	(S)	(S)
White .....	(S)	(S)	(S)	(S)	(S)	(S)	(S)
Red .....	(S)	(S)	(S)	(S)	(S)	(S)	(S)
Texas .....	(S)	(S)	(S)	(S)	(S)	(S)	(S)
United States .....	(D)	17.83	(D)	(D)	15.26	(D)	(D)
<b>Lemons</b>							
Arizona .....	(S)	(S)	(S)	(S)	(S)	(S)	(S)
California .....	53.80	32.35	44.16	(D)	26.47	37.90	(D)
United States .....	53.80	32.35	44.16	(D)	26.47	37.90	(D)
<b>Oranges</b>							
California, all .....	24.90	10.89	15.36	(D)	8.15	12.70	(D)
Navel and miscellaneous .....	(S)	(S)	(S)	(S)	(S)	(S)	(S)
Valencia .....	24.90	10.89	15.36	(D)	8.15	12.70	(D)
Florida, all .....	(S)	(S)	(S)	(S)	(S)	(S)	(S)
Early and mids .....	(S)	(S)	(S)	(S)	(S)	(S)	(S)
Valencia .....	(S)	(S)	(S)	(S)	(S)	(S)	(S)
Texas, all .....	(S)	(S)	(S)	(S)	(S)	(S)	(S)
Early and mids .....	(S)	(S)	(S)	(S)	(S)	(S)	(S)
Valencia .....	(S)	(S)	(S)	(S)	(S)	(S)	(S)
United States .....	24.90	10.93	15.36	(D)	8.19	12.70	(D)
<b>Tangelos</b>							
Florida .....	(S)	(S)	(S)	(S)	(S)	(S)	(S)
United States .....	(S)	(S)	(S)	(S)	(S)	(S)	(S)
<b>Tangerines and mandarins</b>							
California .....	(S)	(S)	(S)	(S)	(S)	(S)	(S)
Florida .....	(S)	(S)	(S)	(S)	(S)	(S)	(S)
United States .....	(S)	(S)	(S)	(S)	(S)	(S)	(S)

(D) Withheld to avoid disclosing data for individual operations.

(S) Insufficient number of reports to establish an estimate.

## Prices Received for Citrus Fruits by Utilization – States and United States: August 2016

[Net pounds per box: grapefruit in California-80, Florida-85, Texas-80; lemons-80; oranges in California-80, Florida-90, Texas-85; tangelos-90; tangerines and mandarins in California-80, Florida-95]

Commodity, State, and type	FOB packed fresh	Equivalent returns					
		Packinghouse door			On-tree		
		All	Fresh	Process	All	Fresh	Process
	(dollars per box)	(dollars per box)	(dollars per box)	(dollars per box)	(dollars per box)	(dollars per box)	(dollars per box)
<b>Grapefruit</b>							
California .....	(D)	17.52	(D)	(D)	14.85	(D)	(D)
Florida, all .....	(S)	(S)	(S)	(S)	(S)	(S)	(S)
White .....	(S)	(S)	(S)	(S)	(S)	(S)	(S)
Red .....	(S)	(S)	(S)	(S)	(S)	(S)	(S)
Texas .....	(S)	(S)	(S)	(S)	(S)	(S)	(S)
United States .....	(D)	17.52	(D)	(D)	14.85	(D)	(D)
<b>Lemons</b>							
Arizona .....	(S)	(S)	(S)	(S)	(S)	(S)	(S)
California .....	53.20	35.67	43.37	(D)	29.54	36.98	(D)
United States .....	53.20	35.67	43.37	(D)	29.54	36.98	(D)
<b>Oranges</b>							
California, all .....	25.50	11.46	15.96	(D)	8.72	13.30	(D)
Navel and miscellaneous .....	(S)	(S)	(S)	(S)	(S)	(S)	(S)
Valencia .....	25.50	11.46	15.96	(D)	8.72	13.30	(D)
Florida, all .....	(S)	(S)	(S)	(S)	(S)	(S)	(S)
Early and mids .....	(S)	(S)	(S)	(S)	(S)	(S)	(S)
Valencia .....	(S)	(S)	(S)	(S)	(S)	(S)	(S)
Texas, all .....	(S)	(S)	(S)	(S)	(S)	(S)	(S)
Early and mids .....	(S)	(S)	(S)	(S)	(S)	(S)	(S)
Valencia .....	(S)	(S)	(S)	(S)	(S)	(S)	(S)
United States .....	25.50	11.46	15.96	(D)	8.72	13.30	(D)
<b>Tangelos</b>							
Florida .....	(S)	(S)	(S)	(S)	(S)	(S)	(S)
United States .....	(S)	(S)	(S)	(S)	(S)	(S)	(S)
<b>Tangerines and mandarins</b>							
California .....	(S)	(S)	(S)	(S)	(S)	(S)	(S)
Florida .....	(S)	(S)	(S)	(S)	(S)	(S)	(S)
United States .....	(S)	(S)	(S)	(S)	(S)	(S)	(S)

(D) Withheld to avoid disclosing data for individual operations.

(S) Insufficient number of reports to establish an estimate.

## Prices Received for Potatoes – States and United States: August 2016 with Comparisons

State	August 2015 (dollars per cwt)	July 2016 (dollars per cwt)	August 2016 (dollars per cwt)
California, all <sup>1</sup> .....	12.80	19.20	19.10
Spring .....	12.80	19.20	19.10
Fall .....	(S)	(S)	(S)
Colorado, all <sup>1</sup> .....	4.60	7.55	6.15
Fresh <sup>2</sup> .....	6.30	9.65	11.20
Florida .....	(S)	13.90	(S)
Idaho, all <sup>1</sup> .....	7.00	6.55	6.70
Fresh <sup>2</sup> .....	5.70	5.05	6.25
Processing .....	7.70	7.50	7.25
Maine .....	(D)	(D)	(D)
Michigan .....	(D)	(S)	(D)
Minnesota .....	10.50	(S)	11.20
New York .....	(D)	(S)	(D)
North Carolina .....	(S)	11.80	(S)
North Dakota, all <sup>1</sup> .....	(S)	(D)	(D)
Fresh <sup>2</sup> .....	(S)	(D)	(D)
Processing .....	(S)	(D)	(D)
Oregon .....	6.90	8.65	7.15
Texas .....	(D)	(D)	(D)
Virginia .....	14.70	17.80	17.20
Washington, all <sup>1</sup> .....	7.50	8.80	7.70
Processing .....	7.05	8.30	(D)
Wisconsin, all <sup>1</sup> .....	10.80	(S)	11.50
Fresh <sup>2</sup> .....	11.00	(S)	12.10
Processing .....	9.90	(S)	10.90
United States, all <sup>1</sup> .....	8.45	9.23	8.93
Fresh <sup>2</sup> .....	10.73	10.34	12.01
Processing .....	7.63	8.59	7.68

(D) Withheld to avoid disclosing data for individual operations.

(S) Insufficient number of reports to establish an estimate.

<sup>1</sup> Average price of potatoes sold for all uses, including table stock, processing, seed, and livestock feed.

<sup>2</sup> Fresh market prices only. Includes table stock prices.

## Prices Received for All Milk – States and United States: August 2016 with Comparisons

[Before deduction for hauling. Includes quality, quantity, and other premiums. Excludes hauling subsidies]

State	August 2015		July 2016		August 2016	
	Price	Fat test	Price	Fat test	Price	Fat test
	(dollars per cwt)	(percent)	(dollars per cwt)	(percent)	(dollars per cwt)	(percent)
Arizona .....	15.60	3.39	15.30	3.46	16.20	3.45
California .....	15.23	3.63	14.94	3.64	15.96	3.67
Colorado .....	17.30	3.46	16.20	3.51	17.20	3.54
Florida .....	21.00	3.61	19.00	3.57	19.90	3.62
Idaho .....	16.50	3.72	16.20	3.72	17.30	3.72
Illinois .....	17.40	3.61	16.50	3.63	17.60	3.62
Indiana .....	16.30	3.51	15.90	3.55	16.60	3.58
Iowa .....	17.10	3.66	16.60	3.70	17.60	3.71
Kansas .....	16.60	3.51	15.40	3.53	16.60	3.54
Michigan .....	16.00	3.55	14.80	3.51	15.60	3.53
Minnesota .....	17.50	3.74	16.80	3.77	18.20	3.79
New Mexico .....	15.40	3.40	15.20	3.43	16.50	3.48
New York .....	17.40	3.64	16.80	3.66	17.30	3.65
Ohio .....	17.10	3.60	16.50	3.63	17.10	3.65
Oregon .....	18.20	3.77	18.40	3.87	19.50	3.82
Pennsylvania .....	17.70	3.62	16.90	3.63	17.50	3.62
South Dakota .....	18.20	3.88	17.50	3.91	18.80	3.94
Texas .....	17.60	3.72	16.70	3.78	17.90	3.84
Utah .....	16.70	3.63	15.40	3.61	16.50	3.64
Vermont .....	17.80	3.70	17.10	3.68	17.70	3.67
Virginia .....	19.30	3.56	17.30	3.57	18.30	3.55
Washington .....	16.00	3.77	16.80	3.87	17.20	3.82
Wisconsin .....	17.60	3.64	16.60	3.65	18.00	3.62
United States .....	16.70	3.63	16.10	3.65	17.10	3.66

## Prices Received for Milk Cows – States and United States: July 2016 with Comparisons

[Animals sold for dairy herd replacement only. Quarterly United States milk cow prices are based on revised milk cow inventory]

State	July 2015	April 2016	July 2016
	(dollars per head)	(dollars per head)	(dollars per head)
Arizona .....	2,100.00	1,950.00	1,850.00
California .....	2,200.00	1,800.00	1,700.00
Colorado .....	2,100.00	1,950.00	1,900.00
Florida .....	2,100.00	1,790.00	1,650.00
Idaho .....	2,000.00	1,900.00	1,800.00
Illinois .....	2,000.00	1,700.00	1,600.00
Indiana .....	1,950.00	1,700.00	1,650.00
Iowa .....	2,050.00	1,860.00	1,740.00
Kansas .....	2,000.00	1,830.00	1,780.00
Michigan .....	2,100.00	1,900.00	1,750.00
Minnesota .....	1,880.00	1,850.00	1,650.00
New Mexico .....	2,000.00	1,900.00	1,800.00
New York .....	1,890.00	1,670.00	1,590.00
Ohio .....	1,850.00	1,700.00	1,550.00
Oregon .....	2,000.00	1,900.00	1,850.00
Pennsylvania .....	1,890.00	1,700.00	1,550.00
South Dakota .....	1,900.00	1,730.00	1,650.00
Texas .....	2,000.00	1,900.00	1,850.00
Utah .....	2,000.00	1,750.00	1,700.00
Vermont .....	1,940.00	1,850.00	1,780.00
Virginia .....	1,950.00	1,660.00	1,590.00
Washington .....	1,950.00	1,800.00	1,800.00
Wisconsin .....	2,090.00	1,910.00	1,820.00
United States .....	2,030.00	1,820.00	1,730.00

## Parity Price Overview

Parity prices, based on data from January 2015, and adjusted base price data from which parity prices are computed are presented in the tables on the following pages. Parity prices are computed under the provisions of Title III, Subtitle A, Section 301(a) of the Agricultural Adjustment Act of 1938 as amended by the Agricultural Acts of 1948, 1949, 1954, and 1956.

The parity prices shown in this report are based on the provisions of the amended Act. Briefly, the actual method of computation is as follows:

- a. The average of prices received by farmers for individual commodities for the 10 preceding years is calculated (for 2015, the 10-average includes the years 2005-2014). An allowance for unredeemed loans and other supplemental payments resulting from price support programs, such as the deficiency payments for grains and cotton, is included for those commodities for which applicable.
- b. This 10-year average is divided by the average of the Index of Prices Received by Farmers for the same 10 preceding calendar years, adjusted to include an allowance for unredeemed loans and other supplemental price support operations, to give an "adjusted base price".
- c. Parity prices are computed by multiplying the "adjusted base prices" by the current Parity Index (the Index of Prices Paid by Farmers, including Interest, Taxes, and Wage Rates, 1910-1914=100).

Parity prices are calculated in terms of prices received by farmers in the local markets in which they ordinarily sell. This means that the parity prices apply to the average of all classes and grades of the commodity as sold by all farmers in the United States, except as otherwise specified. Fruits and vegetables for fresh use and for processing are usually considered separate commodities and separate parity prices are calculated. The Agricultural Marketing Agreement Act of 1937 provided for parity prices for certain commodities covered by a marketing agreement or order program. Under present legislation, United States parity prices, with appropriate adjustments where needed, may be used for the purpose of this Act.

## Commodity Parity Prices and Price as Percent of Parity Price – United States: August 2016 with Comparisons

[Parity prices are computed under the provisions of Title III, Subtitle a, Section 301 (a) of the Agricultural Adjustment Act of 1938 as amended by the Agricultural Acts of 1948, 1949, and 1956. See January *Agricultural Prices* for details on adjusted base price and parity price computations. Parity data not available for blank cells. Primary source of data for livestock and milk prices is United States Department of Agriculture's Agricultural Marketing Service]

Commodity and unit	Adjusted base price	Parity price			Price as percent of parity		
		August 2015	July 2016	August 2016	August 2015	July 2016	August 2016
	(dollars)	(dollars)	(dollars)	(dollars)	(percent)	(percent)	(percent)
<b>Basic commodities</b>							
All wheat .....bushel	0.626	18.30	18.10	17.90	26	21	21
Rice .....cwt	1.37	39.30	39.50	39.20	31	30	30
Corn .....bushel	0.450	13.00	13.00	12.90	28	28	25
<b>Cotton</b>							
Upland .....pound	0.067	1.93	1.93	1.92	30	32	35
American Pima .....pound	0.133	3.98	3.84	3.80	39	35	35
Peanuts .....pound	0.023	0.703	0.663	0.658	29	29	29
Small chickpeas <sup>1</sup> .....cwt	2.250	64.50	64.90	64.40	32	51	48
Large chickpeas <sup>1</sup> .....cwt	3.270	97.60	94.30	93.50	30	36	35
Lentils <sup>1</sup> .....cwt	2.380	66.80	68.60	68.10	39	53	40
<b>Designated non-basic</b>							
All milk, to plants <sup>2</sup> .....cwt	1.80	53.60	51.90	51.50	31	32	33
Honey, extracted <sup>3</sup> .....pound	0.157	4.40	4.53	4.49	49	46	47
<b>Wool and mohair</b>							
Wool .....pound	0.121	3.43	3.49	3.46	43	42	42
Mohair .....pound	0.394	11.10	11.40	11.30	44	46	47
<b>Other non-basic</b>							
Apples, fresh <sup>4</sup> .....pound	0.033	0.967	0.952	0.944	31	42	48
Barley .....bushel	0.484	13.70	14.00	13.80	41	36	35
Canola .....cwt	1.890	55.10	54.50	54.10	28	30	29
Cottonseed .....ton	20.00	563.00	577.00	572.00	34	41	31
Dry edible beans .....cwt	3.21	95.20	92.60	91.80	30	34	32
Flaxseed .....bushel	1.150	34.30	33.20	32.90	29	26	25
Oats .....bushel	0.296	8.64	8.54	8.47	24	22	22
Potatoes .....cwt	0.857	24.80	24.70	24.50	34	37	36
Sorghum grain .....cwt	0.778	22.20	22.40	22.30	36	27	25
Soybeans .....bushel	1.080	31.60	31.10	30.90	31	33	32
Sunflower, all .....cwt	2.16	62.40	62.30	61.80	39	30	32
<b>Citrus (equivalent on-tree)</b>							
Grapefruit .....box	0.660	22.80	19.00	18.90	25	80	79
Lemons .....box	1.62	43.70	46.70	46.30	67	57	64
Oranges .....box	0.865	23.60	24.90	24.70	51	33	35
Tangerines .....box	1.79	51.30	51.60	51.20	83	83	83
<b>Livestock and poultry</b>							
Beef cattle .....cwt	11.10	316.00	320.00	317.00	47	37	37
Broilers .....pound	0.050	1.47	1.44	1.43	32	36	31
Calves .....cwt	16.20	448.00	467.00	463.00	61	31	34
Eggs <sup>2</sup> .....dozen	0.103	2.75	2.97	2.95	78	21	20
Hogs .....cwt	5.70	170.00	164.00	163.00	35	36	32
Turkeys, live .....pound	0.063	1.790	1.820	1.800	50	48	47

<sup>1</sup> Parity prices began January 2015.

<sup>2</sup> Seasonally adjusted price as percentage of parity price.

<sup>3</sup> Wholesale extracted. Adjusted base price derived from state annual averages prices weighted by production. For 1982 through 1985 the national averages are the support prices.

<sup>4</sup> Equivalent packinghouse-door returns for California, New York, Oregon, and Washington. Price at point of first sale for other states.

## Commodity Parity Prices – United States: August 2016 with Comparisons

[Parity prices are computed under the provisions of Title III, Subtitle a, Section 301 (a) of the Agricultural Adjustment Act of 1938 as amended by the Agricultural Acts of 1948, 1949, and 1956. See January *Agricultural Prices* for details on adjusted base price and parity price computations]

Commodity and unit	Adjusted base price	Parity price			
		August 2015	July 2016	August 2016	
	(dollars)	(dollars)	(dollars)	(dollars)	
<b>Field crops and miscellaneous</b>					
Hops .....	pound	0.338	9.52	9.75	9.67
Mustard seed .....	cwt	3.17	90.00	91.40	90.70
Rapeseed .....	cwt	2.66	71.20	76.70	76.10
Rye .....	bushel	0.630	18.00	18.20	18.00
Safflower .....	cwt	2.23	63.30	64.30	63.80
Spearmint oil .....	pound	1.70	48.10	49.00	48.60
Sweet potatoes .....	cwt	2.08	60.90	60.00	59.50
<b>Tobacco</b>					
Flue-cured, 11-14 .....	pound	0.180	5.30	5.19	5.15
Fire-cured, 21-23 .....	pound	0.255	7.59	7.35	7.29
Burley, 31 .....	pound	0.179	5.30	5.16	5.12
Maryland, 32 .....	pound	0.171	5.01	4.93	4.89
Dark air-cured, 35-37 .....	pound	0.230	6.86	6.63	6.58
Pennsylvania seedleaf, 41 .....	pound	0.184	5.30	5.31	5.26
Cigar binder, 51 .....	pound	0.629	18.50	18.10	18.00
<b>Non-citrus fruit</b>					
Apples, processing <sup>1 2</sup> .....	ton	18.30	530.00	528.00	523.00
Apricots					
Fresh <sup>3</sup> .....	ton	116.00	3,490.00	3,350.00	3,320.00
Dried (California) .....	ton	251.00	7,530.00	7,240.00	7,180.00
Avocados <sup>2 3</sup> .....	ton	178.00	5,360.00	5,130.00	5,090.00
Cherries					
Sweet .....	ton	209.00	6,300.00	6,030.00	5,980.00
Tart <sup>2</sup> .....	pound	0.032	0.967	0.923	0.915
Cranberry <sup>2 4</sup> .....	barrel	4.32	130.00	125.00	124.00
Dates (California) <sup>3</sup> .....	ton	147.00	4,450.00	4,240.00	4,200.00
Grapes (California)					
Raisin variety <sup>5</sup> .....	ton	140.00	4,220.00	4,040.00	4,000.00
Wine, processing .....	ton	64.90	(NA)	1,870.00	1,860.00
Kiwifruit <sup>2</sup> .....	ton	91.40	2,640.00	2,640.00	2,610.00
Nectarines, fresh (California) <sup>3</sup> .....	ton	60.50	1,780.00	1,740.00	1,730.00
Olives, canning (California) <sup>4</sup> .....	ton	93.10	2,800.00	2,690.00	2,660.00

See footnote(s) at end of table.

--continued

## Commodity Parity Prices – United States: August 2016 with Comparisons (continued)

[Parity prices are computed under the provisions of Title III, Subtitle a, Section 301 (a) of the Agricultural Adjustment Act of 1938 as amended by the Agricultural Acts of 1948, 1949, and 1956. See January *Agricultural Prices* for details on adjusted base price and parity price computations]

Commodity and unit	Adjusted base price	Parity price		
		August 2015	July 2016	August 2016
	(dollars)	(dollars)	(dollars)	(dollars)
<b>Non-citrus fruit - continued</b>				
Papayas (Hawaii) .....pound	0.041	1.20	1.18	1.17
Peaches				
Fresh <sup>4 6</sup> ..... ton	84.80	2,550.00	2,450.00	2,430.00
Dried (California) <sup>1 5</sup> ..... ton	46.10	1,360.00	1,330.00	1,320.00
Processing, excludes dried				
Clingstone (California) <sup>4</sup> ..... ton	32.60	982.00	940.00	932.00
Pears, Fresh <sup>6</sup> ..... ton	56.00	1,690.00	1,620.00	1,600.00
Plums (California) equivalent on-tree				
Fresh <sup>7</sup> ..... ton	60.60	1,830.00	1,750.00	1,730.00
Prunes, dried (California) <sup>1 2 5</sup> ..... ton	154.00	4,600.00	4,440.00	4,400.00
Prunes and plums				
Fresh, excludes California <sup>7</sup> ..... ton	61.20	1,840.00	1,770.00	1,750.00
Processing, excludes dried <sup>1</sup> ..... ton	23.80	700.00	686.00	681.00
Strawberries				
Fresh <sup>10</sup> .....pound	8.900	265.00	257.00	255.00
Processing .....pound	3.44	99.00	99.20	98.40
Sugar crops				
Sugar beets <sup>2 8</sup> ..... ton	5.26	156.00	152.00	150.00
Sugarcane <sup>2 8</sup> ..... ton	3.52	104.00	102.00	101.00
<b>Tree nuts <sup>9</sup></b>				
Almonds .....pound	0.227	6.91	6.55	6.49
Hazelnuts ..... ton	217.00	6,500.00	6,260.00	6,210.00
Pistachios .....pound	0.227	6.65	6.55	6.49
Walnuts ..... ton	236.00	6,530.00	6,810.00	6,750.00
<b>Vegetables, fresh <sup>10</sup></b>				
Carrots <sup>11</sup> ..... cwt	2.67	77.10	77.00	76.40
Cauliflower <sup>11</sup> ..... cwt	4.29	122.00	124.00	123.00
Celery <sup>11</sup> ..... cwt	2.05	58.30	59.10	58.60
Honeydew melons ..... cwt	1.96	58.00	56.50	56.10
Lettuce ..... cwt	2.26	63.60	65.20	64.60
Onions <sup>11</sup> ..... cwt	1.42	41.30	41.00	40.60
Tomatoes ..... cwt	4.14	123.00	119.00	118.00

(NA) Not available.

<sup>1</sup> Equivalent returns at processing plant door.

<sup>2</sup> Adjusted base price is carried forward from the previous year since current marketing year average price is not yet available.

<sup>3</sup> Equivalent returns at packinghouse door.

<sup>4</sup> Equivalent returns for bulk fruit at first delivery point.

<sup>5</sup> Dried basis.

<sup>6</sup> Equivalent packinghouse-door returns for California, New York (apples only), Oregon (except peaches), and Washington. Price at point of first sale for other states.

<sup>7</sup> Based on "as sold" prices for fresh fruit in all states.

<sup>8</sup> Relates to prices including average conditional payments per ton made under the sugar acts of 1937 and 1948. Crop deficiency and abandonment payments not included.

<sup>9</sup> Prices In-Shell basis except almonds which are shelled basis.

<sup>10</sup> FOB shipping point price.

<sup>11</sup> Includes some processing.



## Marketing Year for Specified Commodities

**Austrian Winter Peas:** July 1 to June 30 for United States, Idaho, Montana, and Oregon.

**Dry Edible Peas:** July 1 to June 30 for United States, Idaho, Montana, North Dakota, Oregon, and Washington.

**Lentils:** July 1 to June 30 for United States, Idaho, Montana, North Dakota, and Washington.

**Corn for grain:** September 1 to August 31 for United States, Arizona, California, Delaware, Illinois, Indiana, Iowa, Kansas, Kentucky, Maryland, Missouri, Nebraska, New Mexico, Ohio, Pennsylvania, South Dakota, Virginia, and West Virginia; July 1 to June 30 for Texas; August 1 to July 31 for Alabama, Arkansas, Florida, Georgia, Louisiana, Mississippi, North Carolina, Oklahoma, South Carolina, and Tennessee; October 1 to September 30 for Colorado, Connecticut, Idaho, Maine, Massachusetts, Michigan, Minnesota, Montana, Nevada, New Hampshire, New Jersey, New York, North Dakota, Oregon, Rhode Island, Utah, Vermont, Washington, Wisconsin, and Wyoming.

**Sorghum for grain:** September 1 to August 31 for United States, Arizona, Colorado, Illinois, Kansas, Missouri, Nebraska, New Mexico, and South Dakota; June 1 to May 31 for Texas; August 1 to July 31 for Arkansas, Georgia, Louisiana, Mississippi, and Oklahoma.

**Canola:** July 1 to June 30 for United States and all States.

**Soybeans:** September 1 to August 31 for United States and all States except Louisiana, Mississippi, and Texas; July 1 to June 30 for Texas; August 1 to July 31 for Louisiana and Mississippi.

**Austrian Winter Peas Market Year Average Prices Received – States and United States: Marketing Years 2013 through 2015**

State	2013	2014	2015
	(dollars)	(dollars)	(dollars)
Idaho .....	24.60	22.10	24.10
Montana .....	19.50	19.20	(D)
Oregon .....	27.70	28.80	(D)
United States .....	23.50	22.70	21.00

(D) Withheld to avoid disclosing data for individual operations.

**Dry Edible Peas Market Year Average Prices Received – States and United States: Marketing Years 2013 through 2015**

[Excludes both wrinkled seed peas and Austrian winter peas]

State	2013	2014	2015
	(dollars)	(dollars)	(dollars)
Idaho .....	17.40	14.50	12.80
Montana .....	13.50	11.00	11.20
North Dakota .....	14.80	12.20	13.50
Oregon .....	16.90	15.50	14.50
Washington .....	16.60	15.40	14.40
United States .....	14.60	12.00	12.80

**Lentils Market Year Average Prices Received – States and United States: Marketing Years 2013 through 2015**

State	2013	2014	2015
	(dollars)	(dollars)	(dollars)
Idaho .....	24.40	31.00	37.70
Montana .....	18.30	22.80	30.30
North Dakota .....	17.90	23.50	28.90
Washington .....	25.30	32.00	39.00
United States .....	19.80	24.40	31.00

**Sorghum Grain Market Year Average Prices Received – States and United States: Marketing Years 2013 through 2015**

State	2013	2014	2015
	(dollars per cwt)	(dollars per cwt)	(dollars per cwt)
Arizona .....	10.10	9.34	9.08
Arkansas .....	8.85	7.07	7.69
Colorado .....	7.66	6.92	5.49
Georgia .....	9.52	8.52	8.12
Illinois .....	7.42	5.97	6.48
Kansas .....	7.46	7.10	5.57
Louisiana .....	8.70	7.76	7.93
Mississippi .....	8.62	7.05	7.94
Missouri .....	8.05	6.35	6.69
Nebraska .....	7.38	7.17	5.76
New Mexico .....	5.76	6.64	6.70
Oklahoma .....	7.49	6.94	6.14
South Dakota .....	6.57	5.95	5.80
Texas .....	8.33	7.23	6.83
United States .....	7.64	7.20	5.91

**Canola Market Year Average Prices Received – States and United States: Marketing Years 2013 through 2015**

States	2013	2014	2015
	(dollars per cwt)	(dollars per cwt)	(dollars per cwt)
Idaho .....	22.00	16.00	16.00
Minnesota .....	26.40	19.70	18.30
Montana .....	19.00	16.10	13.40
North Dakota .....	20.60	16.90	15.60
Oklahoma .....	20.30	15.00	15.90
Oregon .....	22.00	18.70	17.50
Washington .....	21.50	18.40	17.50
Other States <sup>1</sup> .....	19.60	16.90	13.60
United States .....	20.60	16.90	15.60

<sup>1</sup> Other States include Colorado and Kansas.

**Soybean Market Year Average Prices Received – States and United States: Marketing Years 2013 through 2015**

State	2013	2014	2015
	(dollars per bushel)	(dollars per bushel)	(dollars per bushel)
Alabama .....	12.90	10.00	8.95
Arkansas .....	13.10	10.60	9.46
Delaware .....	12.40	9.60	9.17
Florida .....	11.80	8.90	8.00
Georgia .....	13.30	10.50	9.25
Illinois .....	13.20	10.20	9.19
Indiana .....	13.20	10.20	9.16
Iowa .....	13.10	9.96	8.91
Kansas .....	12.80	9.63	8.56
Kentucky .....	13.10	10.50	9.24
Louisiana .....	13.40	10.90	9.74
Maryland .....	12.40	9.82	9.11
Michigan .....	12.90	10.10	8.82
Minnesota .....	12.90	9.96	8.75
Mississippi .....	13.20	11.00	9.72
Missouri .....	13.10	9.99	9.16
Nebraska .....	12.70	9.73	8.66
New Jersey .....	12.40	9.85	8.64
New York .....	12.80	9.69	9.10
North Carolina .....	13.10	10.20	8.68
North Dakota .....	12.40	9.49	8.49
Ohio .....	13.00	10.30	9.16
Oklahoma .....	12.90	9.90	8.80
Pennsylvania .....	13.00	9.80	8.69
South Carolina .....	13.30	10.30	8.65
South Dakota .....	12.50	9.37	8.54
Tennessee .....	13.00	10.60	9.29
Texas .....	12.60	9.55	8.40
Virginia .....	13.00	9.90	8.80
West Virginia .....	12.90	10.00	8.80
Wisconsin .....	12.80	10.00	8.73
United States .....	13.00	10.10	8.95

**Austrian Winter Peas Prices Received and Marketing Percentages by Month – United States: Marketing Years 2013-2014 through 2015-2016**

[Marketing year average (MYA) prices are weighted average prices for the United States marketing year of July - June. Monthly farm marketings, based on a sample survey, as percent of total used for calculating MYA prices]

Month	Prices received			Marketing percentages		
	2013-2014	2014-2015	2015-2016	2013-2014	2014-2015	2015-2016
	(dollars per cwt)	(dollars per cwt)	(dollars per cwt)	(percent)	(percent)	(percent)
July .....	(D)	(S)	22.60	(D)	(S)	8.2
August .....	(D)	23.10	(D)	(D)	37.4	(D)
September .....	(D)	22.50	22.80	(D)	27.4	9.6
October .....	22.60	(D)	25.70	17.1	(D)	13.3
November .....	22.80	27.80	(D)	18.7	4.6	(D)
December .....	(D)	(D)	(D)	(D)	(D)	(D)
January <sup>1</sup> .....	(S)	(D)	(D)	(S)	(D)	(D)
February .....	(S)	(S)	(S)	(S)	(S)	(S)
March .....	(S)	26.00	(D)	(S)	7.7	(D)
April .....	(S)	(D)	(D)	(S)	(D)	(D)
May .....	(S)	(S)	(D)	(S)	(S)	(D)
June .....	(S)	(D)	(D)	(S)	(D)	(D)
MYA .....	23.50	22.70	21.00	100.0	100.0	100.0

(D) Withheld to avoid disclosing data for individual operations.

(S) Insufficient number of reports to establish an estimate.

<sup>1</sup> Second year.

**Dry Edible Peas Prices Received and Marketing Percentages by Month – United States: Marketing Years 2013-2014 through 2015-2016**

[Marketing year average (MYA) prices are weighted average prices for the United States marketing year of July - June. Monthly farm marketings, based on a sample survey, as percent of total used for calculating MYA prices]

Month	Prices received			Marketing percentages		
	2013-2014	2014-2015	2015-2016	2013-2014	2014-2015	2015-2016
	(dollars per cwt)	(dollars per cwt)	(dollars per cwt)	(percent)	(percent)	(percent)
July .....	16.50	12.80	11.30	2.7	3.5	6.8
August .....	14.50	11.00	10.60	18.3	21.4	18.9
September .....	14.30	11.40	12.30	18.7	13.1	7.3
October .....	15.50	11.00	10.90	11.3	9.3	9.2
November .....	15.90	12.00	12.10	6.2	5.2	6.3
December .....	14.60	11.60	12.50	9.2	6.0	10.0
January <sup>1</sup> .....	15.40	12.30	13.20	9.4	7.9	9.6
February .....	15.10	12.30	14.90	4.0	6.6	8.5
March .....	13.40	12.30	13.70	5.5	5.7	8.2
April .....	13.40	13.70	17.30	4.5	7.1	7.0
May .....	13.10	13.70	16.70	3.8	6.1	5.9
June .....	13.30	13.30	13.00	6.4	8.1	2.3
MYA .....	14.60	12.00	12.80	100.0	100.0	100.0

<sup>1</sup> Second year.

## Lentils Prices Received and Marketing Percentages by Month – United States: Marketing Years 2013-2014 through 2015-2016

[Marketing year average (MYA) prices are weighted average prices for the United States marketing year of July - June. Monthly farm marketings, based on a sample survey, as percent of total used for calculating MYA prices]

Month	Prices received			Marketing percentages		
	2013-2014	2014-2015	2015-2016	2013-2014	2014-2015	2015-2016
	(dollars per cwt)	(dollars per cwt)	(dollars per cwt)	(percent)	(percent)	(percent)
July .....	20.30	18.90	30.10	7.9	12.4	2.9
August .....	19.00	20.00	25.80	9.7	13.5	15.1
September .....	23.70	22.80	28.20	7.4	11.1	11.2
October .....	23.00	23.70	29.40	9.3	12.3	14.9
November .....	19.50	25.20	31.80	5.8	5.9	10.6
December .....	19.90	29.90	30.20	7.2	7.6	12.1
January <sup>1</sup> .....	18.50	25.40	31.60	8.5	11.4	14.4
February .....	19.40	29.70	36.00	7.3	4.4	7.6
March .....	18.90	27.90	38.80	11.1	6.9	5.1
April .....	18.50	27.20	36.20	7.7	7.9	3.5
May .....	18.50	29.90	42.70	6.6	3.3	1.4
June .....	19.10	27.20	40.40	11.5	3.3	1.2
MYA .....	19.80	24.40	31.00	100.0	100.0	100.0

<sup>1</sup> Second year.

## Corn Prices Received and Marketing Percentages by Month – United States: Marketing Years 2013-2014 through 2015-2016

[Marketing year average (MYA) prices are weighted average prices for the United States marketing year of September - August. Monthly farm marketings, based on a sample survey, as percent of total used for calculating MYA prices]

Month	Prices received			Marketing percentages		
	2013-2014	2014-2015	2015-2016	2013-2014	2014-2015	2015-2016
	(dollars per bushel)	(dollars per bushel)	(dollars per bushel)	(percent)	(percent)	(percent)
September .....	5.40	3.49	3.68	5.1	6.0	7.6
October .....	4.63	3.57	3.67	11.6	10.7	13.3
November .....	4.37	3.60	3.59	12.3	13.1	9.5
December .....	4.41	3.79	3.65	8.8	10.2	8.5
January <sup>1</sup> .....	4.42	3.82	3.66	14.2	12.8	12.0
February .....	4.35	3.79	3.58	9.4	6.6	6.8
March .....	4.52	3.81	3.56	9.1	7.4	7.3
April .....	4.71	3.75	3.56	7.3	5.2	8.2
May .....	4.71	3.64	3.68	4.8	4.8	6.5
June .....	4.50	3.59	3.82	5.7	9.4	8.2
July .....	4.06	3.80	3.60	5.9	8.4	5.1
August .....	3.63	3.68	3.21	5.8	5.4	7.0
MYA .....	4.46	3.70	3.61	100.0	100.0	100.0

<sup>1</sup> Second year.

## Sorghum Grain Prices Received by Month – States and United States: Marketing Years 2014-2015 and 2015-2016

[Marketing year: September - August for United States; June - May for Texas; August - July for Arkansas, Louisiana, and Oklahoma; September - August for Illinois, Kansas, and Missouri; October - September for Nebraska]

State	2014-2015							
	June	July	August	September	October	November	December	January <sup>1</sup>
	(dollars per cwt)	(dollars per cwt)	(dollars per cwt)	(dollars per cwt)	(dollars per cwt)	(dollars per cwt)	(dollars per cwt)	
Arkansas .....	(D)	(S)	7.22	7.04	6.97	7.34	7.25	7.01
Illinois .....	(S)	(S)	(D)	(D)	6.23	5.71	(D)	6.50
Kansas .....	7.59	6.36	5.71	5.41	6.03	6.54	7.30	7.45
Louisiana .....	(S)	(D)	7.92	(D)	(D)	7.86	(D)	(D)
Missouri .....	(D)	7.30	7.16	5.70	5.24	6.10	6.96	6.69
Nebraska .....	7.51	6.71	6.11	5.82	6.07	6.68	7.48	7.47
Oklahoma .....	7.13	6.39	5.95	5.87	6.28	6.83	7.87	7.95
Texas .....	7.51	7.53	7.13	6.66	6.36	6.84	7.24	7.26
United States .....	7.53	7.40	7.13	6.53	6.26	6.58	7.33	7.40
	February	March	April	May	June	July	August	
	(dollars per cwt)	(dollars per cwt)	(dollars per cwt)	(dollars per cwt)	(dollars per cwt)	(dollars per cwt)	(dollars per cwt)	(dollars per cwt)
Arkansas .....	7.66	(D)	7.37	7.65	(D)	(D)	7.93	
Illinois .....	(D)	(D)	7.10	(D)	(D)	(D)	(S)	
Kansas .....	7.87	8.04	7.96	7.52	7.13	7.78	6.84	
Louisiana .....	7.57	(D)	(D)	(D)	(S)	(D)	8.02	
Missouri .....	7.53	7.62	7.21	7.00	6.69	(D)	6.97	
Nebraska .....	8.05	8.14	7.68	8.69	6.61	7.23	6.91	
Oklahoma .....	8.11	7.89	7.90	7.42	7.59	7.65	6.38	
Texas .....	7.69	7.76	7.55	7.26	8.48	7.67	7.96	
United States .....	7.86	8.00	7.90	7.57	7.83	7.68	7.90	
	2015-2016							
	June	July	August	September	October	November	December	January <sup>1</sup>
	(dollars per cwt)	(dollars per cwt)	(dollars per cwt)	(dollars per cwt)	(dollars per cwt)	(dollars per cwt)	(dollars per cwt)	(dollars per cwt)
Arkansas .....	(D)	(D)	7.93	7.86	7.42	7.82	7.20	7.30
Illinois .....	(D)	(D)	(S)	6.64	6.43	(D)	6.72	6.96
Kansas .....	7.13	7.78	6.84	6.39	6.04	5.62	5.57	5.43
Louisiana .....	(S)	(D)	8.02	(D)	(D)	(D)	7.74	(D)
Missouri .....	6.69	(D)	6.97	7.26	7.15	6.71	6.44	6.17
Nebraska .....	6.61	7.23	6.91	6.46	6.20	5.82	5.78	5.68
Oklahoma .....	7.59	7.65	6.38	6.77	6.46	5.97	6.04	5.98
Texas .....	8.48	7.67	7.96	7.28	6.60	6.34	6.20	5.94
United States .....	7.83	7.68	7.90	7.38	6.31	5.83	5.76	5.60
	February	March	April	May	June	July	August	
	(dollars per cwt)	(dollars per cwt)	(dollars per cwt)	(dollars per cwt)	(dollars per cwt)	(dollars per cwt)	(dollars per cwt)	
Arkansas .....	7.08	6.62	6.68	(D)	(D)	(D)	4.86	
Illinois .....	6.11	5.75	(D)	6.22	(D)	(D)	(D)	
Kansas .....	5.40	5.28	5.35	5.55	5.87	5.07	4.50	
Louisiana .....	(D)	(D)	(D)	(S)	(D)	(D)	6.13	
Missouri .....	6.58	7.32	6.23	6.11	6.29	5.82	5.27	
Nebraska .....	5.72	5.46	5.40	5.53	5.79	5.66	5.34	
Oklahoma .....	5.95	5.72	5.38	5.68	6.10	6.53	4.61	
Texas .....	5.37	6.21	5.16	5.40	6.67	6.18	5.70	
United States .....	5.54	5.67	5.36	5.56	6.32	6.09	5.49	

(D) Withheld to avoid disclosing data for individual operations.

(S) Insufficient number of reports to establish an estimate.

<sup>1</sup> Second year.

**Canola Prices Received by Month – States and United States: Marketing Years 2014-2015 and 2015-2016**

States	2014-2015					
	July	August	September	October	November	December
	(dollars per cwt)	(dollars per cwt)	(dollars per cwt)	(dollars per cwt)	(dollars per cwt)	(dollars per cwt)
Minnesota .....	(D)	(D)	(D)	(D)	(D)	(D)
North Dakota .....	20.70	17.80	16.20	15.80	17.10	16.60
United States .....	20.70	17.80	16.20	15.80	17.10	16.60
States	January <sup>1</sup>	February	March	April	May	June
	(dollars per cwt)	(dollars per cwt)	(dollars per cwt)	(dollars per cwt)	(dollars per cwt)	(dollars per cwt)
Minnesota .....	(D)	(S)	(S)	(D)	(S)	(S)
North Dakota .....	17.80	17.20	16.60	16.30	16.70	17.80
United States .....	17.80	17.20	16.60	16.30	16.70	17.80
States	2015-2016					
	(dollars per cwt)	(dollars per cwt)	(dollars per cwt)	(dollars per cwt)	(dollars per cwt)	(dollars per cwt)
Minnesota .....	(D)	(D)	(D)	(D)	(D)	(S)
North Dakota .....	18.10	15.60	15.10	14.80	15.10	14.90
United States .....	18.10	15.60	15.10	14.80	15.10	14.90
States	January <sup>1</sup>	February	March	April	May	June
	(dollars per cwt)	(dollars per cwt)	(dollars per cwt)	(dollars per cwt)	(dollars per cwt)	(dollars per cwt)
Minnesota .....	(D)	(D)	(S)	(S)	(S)	(D)
North Dakota .....	13.80	15.20	15.10	16.10	(D)	18.80
United States .....	13.80	15.30	15.10	16.10	(D)	18.80

(D) Withheld to avoid disclosing data for individual operations.

(S) Insufficient number of reports to establish an estimate.

<sup>1</sup> Second year.

## Soybean Prices Received by Month – States and United States: Marketing Year 2014-2015

[Marketing year: September-August for United States; August-July for Louisiana and Mississippi; September-August for all other monthly marketing estimating States]

State	2014-2015						
	August	September	October	November	December	January <sup>1</sup>	February
	(dollars per bushel)	(dollars per bushel)	(dollars per bushel)	(dollars per bushel)	(dollars per bushel)	(dollars per bushel)	(dollars per bushel)
Arkansas .....	12.40	10.70	10.60	10.80	10.70	10.70	10.50
Illinois .....	12.50	10.20	10.20	10.30	10.50	10.50	10.10
Indiana .....	12.90	11.00	10.00	10.20	10.50	10.50	10.20
Iowa .....	12.40	11.00	10.00	10.20	10.00	10.20	9.84
Kansas .....	13.10	10.50	9.50	9.73	9.75	9.78	9.61
Kentucky .....	12.70	10.50	10.40	10.50	10.70	10.60	10.20
Louisiana .....	11.90	11.10	10.70	10.90	10.90	10.80	11.40
Michigan .....	12.40	11.20	10.10	10.10	10.10	10.40	9.88
Minnesota .....	12.60	11.60	10.00	9.95	10.10	10.20	9.74
Mississippi .....	11.90	11.20	11.00	11.10	11.10	10.50	10.50
Missouri .....	12.50	11.50	9.69	9.99	10.30	10.10	9.91
Nebraska .....	12.00	11.00	9.54	9.93	9.88	9.98	9.60
North Carolina .....	13.10	11.10	10.60	10.20	10.10	10.20	10.00
North Dakota .....	10.70	10.10	9.58	9.74	9.82	9.50	9.10
Ohio .....	13.10	11.10	10.10	10.40	10.60	10.70	10.30
South Dakota .....	11.80	10.00	9.22	9.59	9.85	9.79	9.30
Tennessee .....	11.90	10.80	10.30	10.70	10.70	10.80	10.40
Wisconsin .....	12.50	11.20	10.10	10.10	10.00	10.20	10.00
United States .....	12.40	10.90	9.97	10.20	10.30	10.30	9.91
State	March	April	May	June	July	August	
	(dollars per bushel)	(dollars per bushel)	(dollars per bushel)	(dollars per bushel)	(dollars per bushel)	(dollars per bushel)	
Arkansas .....	10.30	10.10	9.88	9.90	10.00	9.80	
Illinois .....	10.10	9.90	9.69	9.77	10.20	9.77	
Indiana .....	10.10	9.94	9.91	9.91	10.30	10.00	
Iowa .....	9.76	9.58	9.50	9.50	10.00	9.49	
Kansas .....	9.39	9.29	9.35	9.38	9.79	9.29	
Kentucky .....	10.30	10.20	10.10	9.95	10.20	9.95	
Louisiana .....	10.70	10.50	10.20	10.10	10.40	9.96	
Michigan .....	9.91	10.00	9.61	9.68	10.20	10.40	
Minnesota .....	9.52	9.73	9.51	9.40	9.74	9.65	
Mississippi .....	10.30	10.10	9.95	9.81	(D)	10.10	
Missouri .....	9.97	9.77	9.67	9.67	10.10	9.80	
Nebraska .....	9.53	9.35	9.34	9.26	9.62	9.37	
North Carolina .....	10.10	10.00	9.77	9.93	10.10	9.39	
North Dakota .....	9.06	8.85	8.78	8.66	9.02	8.93	
Ohio .....	10.10	9.83	9.71	10.10	10.30	10.20	
South Dakota .....	9.22	9.08	9.13	9.12	9.32	9.12	
Tennessee .....	11.10	10.00	9.88	10.00	10.20	9.84	
Wisconsin .....	9.72	9.63	9.40	9.44	9.79	9.57	
United States .....	9.85	9.69	9.58	9.58	9.95	9.71	

(D) Withheld to avoid disclosing data for individual operations.

<sup>1</sup> Second year.



## Soybean Prices Received by Month – States and United States: Marketing Year 2015-2016

[Marketing year: September-August for United States; August-July for Louisiana and Mississippi; September-August for all other monthly marketing estimating States]

State	2015-2016						
	August	September	October	November	December	January <sup>1</sup>	February
	(dollars per bushel)	(dollars per bushel)	(dollars per bushel)	(dollars per bushel)	(dollars per bushel)	(dollars per bushel)	(dollars per bushel)
Arkansas .....	9.80	9.76	9.54	9.23	9.32	9.10	8.98
Illinois .....	9.77	9.11	9.00	8.93	8.99	8.98	8.73
Indiana .....	10.00	9.00	8.80	8.84	8.94	8.93	8.80
Iowa .....	9.49	8.83	8.69	8.58	8.45	8.46	8.36
Kansas .....	9.29	8.71	8.45	8.21	8.27	8.25	8.33
Kentucky .....	9.95	9.19	9.29	9.07	9.19	9.23	9.04
Louisiana .....	9.96	9.82	9.62	9.89	9.67	9.65	9.02
Michigan .....	10.40	8.93	8.73	8.30	8.40	8.58	8.59
Minnesota .....	9.65	8.73	8.64	8.52	8.54	8.32	8.12
Mississippi .....	10.10	9.95	9.78	9.62	9.83	9.37	9.06
Missouri .....	9.80	8.99	9.12	8.88	8.91	8.97	8.82
Nebraska .....	9.37	8.78	8.67	8.33	8.36	8.42	8.28
North Carolina .....	9.39	9.53	8.94	8.49	8.36	8.06	8.51
North Dakota .....	8.93	8.68	8.45	8.21	8.23	8.22	8.10
Ohio .....	10.20	8.88	8.80	8.83	9.06	9.15	8.87
South Dakota .....	9.12	8.45	8.43	8.51	8.41	8.34	8.15
Tennessee .....	9.84	9.37	9.39	9.15	9.21	9.29	9.05
Wisconsin .....	9.57	8.62	8.56	8.36	8.44	8.69	8.55
United States .....	9.71	9.05	8.81	8.68	8.76	8.71	8.51
State	March	April	May	June	July	August	
	(dollars per bushel)	(dollars per bushel)	(dollars per bushel)	(dollars per bushel)	(dollars per bushel)	(dollars per bushel)	
Arkansas .....	9.25	(D)	10.20	(D)	10.30	10.40	
Illinois .....	8.82	9.24	10.10	10.60	10.50	10.20	
Indiana .....	8.90	9.29	10.10	10.90	10.70	10.30	
Iowa .....	8.46	8.93	9.61	10.00	10.10	9.77	
Kansas .....	8.38	9.01	9.66	10.30	10.40	9.73	
Kentucky .....	8.84	9.40	10.20	10.70	10.60	10.20	
Louisiana .....	9.29	(D)	(D)	11.40	10.70	9.94	
Michigan .....	8.70	9.01	9.66	10.50	10.30	10.10	
Minnesota .....	8.16	8.81	9.69	9.88	10.00	9.76	
Mississippi .....	9.04	9.66	10.70	11.50	10.50	9.86	
Missouri .....	8.86	9.27	9.94	10.50	10.50	10.20	
Nebraska .....	8.30	8.73	9.51	10.10	10.10	9.65	
North Carolina .....	8.79	9.36	10.10	10.60	10.40	9.92	
North Dakota .....	8.06	8.47	9.30	9.88	9.59	9.49	
Ohio .....	8.88	9.52	10.00	10.60	10.60	10.30	
South Dakota .....	8.25	8.61	9.30	9.52	9.66	9.41	
Tennessee .....	8.98	9.45	9.96	10.10	10.30	9.85	
Wisconsin .....	8.53	8.98	9.69	10.30	10.30	9.84	
United States .....	8.56	9.01	9.76	10.20	10.20	9.93	

(D) Withheld to avoid disclosing data for individual operations.

<sup>1</sup> Second year.

## Sorghum Grain Marketing Percentages by Month – States and United States: Marketing Years 2014-2015 and 2015-2016

[Monthly farm marketings, based on a sample survey, as a percent of total used for calculating marketing year average prices. Blank cells indicate month is outside State's designated marketing year]

State and Marketing Year	Jun	Jul	Aug	Sep	Oct	Nov	Dec	Jan	Feb	Mar	Apr	May	Jun	Jul	Aug
	(%)	(%)	(%)	(%)	(%)	(%)	(%)	(%)	(%)	(%)	(%)	(%)	(%)	(%)	(%)
<b>Arkansas</b>															
2014-2015 .....			4	45	32	8	2	5	3	-	-	-	1	-	
2015-2016 .....			11	54	18	5	6	2	1	1	1	1	-	-	
<b>Illinois</b>															
2014-2015 .....				-	9	73	7	6	-	1	1	3	-	-	-
2015-2016 .....				1	26	36	16	8	6	2	3	1	-	1	-
<b>Kansas</b>															
2014-2015 .....				2	8	28	24	15	9	6	3	2	2	1	-
2015-2016 .....				1	13	18	21	16	6	7	8	4	3	1	2
<b>Louisiana</b>															
2014-2015 .....			49	25	10	2	2	8	-	1	-	-	-	3	
2015-2016 .....			57	15	8	5	6	5	-	-	2	-	-	2	
<b>Missouri</b>															
2014-2015 .....				15	14	24	16	15	5	4	3	1	1	1	1
2015-2016 .....				15	22	12	14	8	11	1	7	3	2	3	2
<b>Nebraska</b>															
2014-2015 .....				1	15	24	26	14	9	5	2	2	1	1	-
2015-2016 .....				1	15	17	15	18	8	7	10	3	3	1	2
<b>Oklahoma</b>															
2014-2015 .....			4	16	23	17	19	10	5	2	1	2	1	-	
2015-2016 .....			1	13	15	15	19	12	8	7	4	2	1	3	
<b>Texas</b>															
2014-2015 .....	11	19	11	8	6	5	16	18	4	2	-	-			
2015-2016 .....	5	15	16	8	6	10	11	10	3	12	3	1			
<b>United States</b>															
2014-2015 .....				6.4	10.3	21.2	21.2	15.7	7.7	4.5	2.2	1.9	3.1	5.8	-
2015-2016 .....				6.9	11.9	14.5	16.8	13.3	5.0	7.8	5.8	3.0	3.7	6.1	5.2

- Represents zero.

## Canola Marketing Percentages by Month – States and United States: Marketing Years 2014-2015 and 2015-2016

[Monthly farm marketings are based on a sample survey and used as a percent of total for calculating MYA prices]

Year	Jul	Aug	Sep	Oct	Nov	Dec	Jan <sup>1</sup>	Feb	Mar	Apr	May	Jun
	(%)	(%)	(%)	(%)	(%)	(%)	(%)	(%)	(%)	(%)	(%)	(%)
<b>Minnesota</b>												
2014-2015 .....	3	17	14	17	4	14	24	-	-	7	-	-
2015-2016 .....	39	18	15	3	10	-	4	10	-	-	-	1
<b>North Dakota</b>												
2014-2015 .....	3	3	25	11	7	11	16	5	5	3	4	7
2015-2016 .....	5	14	14	12	3	12	7	2	13	5	4	9
<b>United States</b>												
2014-2015 .....	3.3	3.2	25.0	11.1	7.4	10.8	16.0	4.8	4.6	2.9	3.8	7.1
2015-2016 .....	5.2	14.0	13.9	11.7	3.0	11.8	7.4	2.4	12.8	5.3	4.0	8.5

- Represents zero.

<sup>1</sup> Second year.

## Soybean Marketing Percentages by Month – States and United States: Marketing Years 2014-2015 and 2015-2016

[Monthly farm marketings, based on a sample survey, as a percent of total used for calculating marketing year average prices. Blank cells indicate month is outside State's designated marketing year]

State and Marketing Year	Aug	Sep	Oct	Nov	Dec	Jan	Feb	Mar	Apr	May	Jun	Jul	Aug
	(%)	(%)	(%)	(%)	(%)	(%)	(%)	(%)	(%)	(%)	(%)	(%)	(%)
<b>Arkansas</b>													
2014-2015 .....		13	30	21	16	10	2	2	2	1	1	1	1
2015-2016 .....		14	28	12	18	7	5	3	8	2	1	1	1
<b>Illinois</b>													
2014-2015 .....		3	21	13	11	20	10	4	3	3	6	3	3
2015-2016 .....		7	19	6	9	18	6	10	10	5	4	4	2
<b>Indiana</b>													
2014-2015 .....		5	23	14	9	12	9	10	4	3	5	3	3
2015-2016 .....		14	21	5	7	10	8	12	8	5	4	3	3
<b>Iowa</b>													
2014-2015 .....		3	32	9	6	12	9	5	4	4	6	6	4
2015-2016 .....		3	26	6	6	9	6	10	11	8	8	4	3
<b>Kansas</b>													
2014-2015 .....		3	27	22	12	10	8	5	4	3	3	2	1
2015-2016 .....		3	22	14	15	13	5	10	8	4	3	1	2
<b>Kentucky</b>													
2014-2015 .....		2	13	20	18	28	7	4	3	1	2	1	1
2015-2016 .....		3	20	13	15	20	9	10	5	2	1	1	1
<b>Louisiana</b>													
2014-2015 .....	4	36	28	6	12	12	1	-	-	-	-	1	
2015-2016 .....	7	39	27	8	10	5	1	2	1	-	-	-	
<b>Michigan</b>													
2014-2015 .....		1	26	20	12	10	6	6	4	3	5	4	3
2015-2016 .....		5	30	11	9	11	6	9	8	5	3	1	2
<b>Minnesota</b>													
2014-2015 .....		4	32	8	10	12	8	6	4	3	6	5	2
2015-2016 .....		10	22	5	8	10	7	10	10	5	6	4	3
<b>Mississippi</b>													
2014-2015 .....	1	21	26	11	25	6	4	2	1	-	1	2	
2015-2016 .....	4	16	19	6	29	8	7	5	4	1	1	-	
<b>Missouri</b>													
2014-2015 .....		2	16	24	14	15	8	5	4	3	4	3	2
2015-2016 .....		3	21	12	11	14	7	11	8	5	3	3	2
<b>Nebraska</b>													
2014-2015 .....		4	31	12	12	13	9	4	3	2	5	3	2
2015-2016 .....		5	25	8	12	12	6	11	9	4	4	2	2
<b>North Carolina</b>													
2014-2015 .....		1	13	27	18	16	6	5	4	3	3	3	1
2015-2016 .....		1	12	29	23	12	5	4	4	5	2	2	1
<b>North Dakota</b>													
2014-2015 .....		2	37	15	12	10	7	5	2	1	4	4	1
2015-2016 .....		10	22	5	11	12	9	9	9	3	5	3	2
<b>Ohio</b>													
2014-2015 .....		8	26	13	8	12	8	7	4	3	5	4	2
2015-2016 .....		14	23	5	7	12	7	10	9	5	4	2	2
<b>South Dakota</b>													
2014-2015 .....		3	41	8	6	11	9	4	3	2	6	4	3
2015-2016 .....		5	27	7	9	11	8	10	10	3	5	3	2
<b>Tennessee</b>													
2014-2015 .....		7	17	38	11	17	3	2	1	1	1	1	1
2015-2016 .....		4	38	22	12	10	4	5	2	1	1	1	-
<b>Wisconsin</b>													
2014-2015 .....		1	32	19	8	16	7	5	3	2	4	2	1
2015-2016 .....		4	41	7	6	12	4	7	10	3	3	2	1
<b>United States</b>													
2014-2015 .....		5.3	27.3	13.8	10.7	13.4	7.8	5.1	3.4	2.5	4.7	3.6	2.4
2015-2016 .....		7.7	23.8	7.5	9.7	12.1	6.4	9.5	9.0	4.7	4.6	2.7	2.3

- Represents zero.

## Reliability of Prices Received Estimates

**Definition:** Prices received represent sales from producers to first buyers. They include all grades and qualities. The average commodity price from the survey multiplied by the total quantity marketed theoretically should give the total cash receipts for the commodity.

**Survey procedures:** Primary sales data used to determine grain prices were obtained from probability samples of about 1,900 mills and elevators. These procedures ensure that virtually all grain moving into commercial channels has a chance of being included in the survey. Generally, States surveyed account for 90 percent or more of total United States production. Livestock prices are obtained from packers, stockyards, auctions, dealers, and market check data from AMS-USDA, private marketing organizations, and state commodity groups and agencies. Inter-farm sales of grain and livestock are not included since they represent very small percentages of the total sales. Grain marketed for seed is also excluded. Fruit and vegetable prices are obtained from sample surveys and market check data from AMS-USDA, private marketing organizations, state agencies, and universities.

**Summary and estimation procedures:** Survey quantities sold are expanded by strata to state levels and used to weight average strata prices to a state average. State prices are then weighted to a United States price based on expanded sales. Recommendations are prepared by the Regional Field Offices and reviewed by the Agricultural Statistics Board in Washington, D.C. State recommendations are reviewed for reasonableness with survey data, other States, and recent historic estimates.

**Revisions:** In general, revisions are made during annual commodity market year estimation time, following five-year Census revisions, or when later information is received. Revisions are published in monthly issues of *Agricultural Prices*.

**Reliability:** United States price estimates based on probability surveys generally have a sampling error of less than one percent for the major commodities such as corn, wheat, soybeans, cotton, and rice. Current methods of summarization for non-probability commodities are not designed directly to calculate sampling errors. However, analytical measures approximate the United States relative sampling errors at around five percent. Any non-sampling errors are attributed to such things as the inability to obtain correct information, differences in interpreting questions or definitions, mistakes in coding or processing the data, etc. Efforts are made at each step in the survey process to minimize these non-sampling errors.

**Program Changes:** After the Council on Food, Agricultural and Resource Economics (C-FARE) 2009 program review which included changes in farm production practices, plans were implemented to make necessary program improvements in the agricultural price program. The index group structure for prices received was modified to maintain a more universal structure and consistency with the required 1910-1914 series.

Modifications implemented January 2014 include the following: update the current 1990-1992 base reference period to 2011, link the 1910-1914 series to the updated base reference period, 2011, create index groups used universally by researchers, data users, and policymakers, re-classify agricultural commodities into the index groups, expand the commodity coverage for vegetable, melon, non-citrus, and tree nuts, update monthly market weights, and adjust (normalization) current five year moving average cash receipts and farm input cost weights.

Modifications implemented January 2015 discontinued preliminary prices and replaced the annual average index with an annual index.

The February 2016 program update changed the rounding of the 2011 base period indexes to nearest tenth of a percent. The 1910-1914 base period indexes remain rounded to the nearest whole number.

See Price Program Links at end of this report for program change details.

## August Prices Paid by Farmers

The August Prices Paid Index for Commodities and Services, Interest, Taxes, and Farm Wage Rates (PPITW), at 105.7, is down 0.8 percent from July 2016 and down 4.0 percent from August 2015.

**Production:** The August index, at 103.9, is down 1.1 percent from July and is 6.0 percent lower than last year. Lower prices for concentrates, nitrogen, feed grains, and complete feeds more than offset higher prices for feeder cattle, repairs, herbicides, and self-propelled machinery.

**Feed:** At 105.2, the August index decreased 5.3 percent from July and is down 2.0 percent from last August. Since July, lower prices for concentrates, feed grains, complete feeds, and supplements more than offset higher prices for hay & forages.

**Livestock and poultry:** The August index, at 100.9, increased 1.4 percent from July but is down 32 percent from last year. Since July, higher prices for feeder cattle more than offset lower prices for feeder pigs. The August feeder cattle price, at \$142.00 per cwt, is up \$4.00 per cwt from the July price. August feeder pigs averaged \$73.00 per cwt, down \$18.00 per cwt from July.

**Fertilizer:** The index for August, at 68.2, is down 3.9 percent from July and 20 percent below August a year ago. Compared with July, prices are lower for nitrogen, mixed fertilizer, and potash & phosphate.

**Chemicals:** The August index, at 107.8, is up 0.7 percent from July and up 0.2 percent from last August.

**Fuels:** At 56.4, the August index is down 3.1 percent from July and 7.4 percent below August 2015. Compared with July, prices are lower for diesel, gasoline, and LP gas.

**Machinery:** The index for August, at 114.7, increased 0.1 percent from July and is 0.3 percent above last August. Compared with last month, prices are higher for self-propelled machinery but lower for tractors and other machinery.

**Consumer Price Index:** The August 2016 Consumer Price Index for All Urban Consumers (CPI-U), as issued by the Bureau of Labor Statistics, increased 1.1 percent over the last 12 months to an index level of 240.853 (1982-1984=100). For the month, the index increased 0.1 percent prior to seasonal adjustment.

## Prices Paid Indexes and Related Parity Ratios – United States: August 2016 with Comparisons

[Revised historical price indexes for months not shown are available at [www.nass.usda.gov](http://www.nass.usda.gov)]

Index Group and Ratios	1910-1914 Base			2011 Base		
	August 2015	July 2016	August 2016	August 2015	July 2016	August 2016
	(percent)	(percent)	(percent)	(percent)	(percent)	(percent)
Prices paid by farmers for commodities, services, interest, taxes, and wage rates (PPITW) .....	2979	2884	2860	110.1	106.6	105.7
Production .....	2300	2188	2163	110.5	105.1	103.9
Feed .....	1183	1224	1159	107.4	111.1	105.2
Livestock and poultry .....	2909	1965	1992	147.4	99.5	100.9
Seeds .....	3755	3643	3643	114.3	110.9	110.9
Fertilizer .....	1028	855	821	85.3	71.0	68.2
Chemicals .....	966	962	968	107.6	107.1	107.8
Fuels .....	1703	1629	1579	60.9	58.2	56.4
Supplies and repairs .....	1244	1246	1254	105.5	105.6	106.3
Autos and trucks .....	3235	3255	3245	105.3	105.9	105.6
Machinery .....	6983	7001	7011	114.3	114.6	114.7
Building materials .....	2492	2511	2517	107.1	107.9	108.2
Services and rent .....	2483	2531	2530	(NA)	(NA)	(NA)
Services .....	(NA)	(NA)	(NA)	114.3	117.3	117.2
Rent .....	(NA)	(NA)	(NA)	120.9	122.0	122.0
Interest <sup>1</sup> .....	3643	3846	3846	99.9	105.5	105.5
Taxes <sup>2</sup> .....	7335	7623	7623	123.6	128.4	128.4
Wage rates .....	7980	8159	8159	111.4	113.9	113.9
Family living-CPI <sup>3</sup> .....	2264	2286	2288	106.0	107.0	107.1
Production, interest, taxes, and wage rates (PITW) .....	3122	3003	2974	110.7	106.5	105.5
Ratio (received/paid) .....	(NA)	(NA)	(NA)	94	84	85
Parity ratio <sup>4</sup> .....	36	32	32	(NA)	(NA)	(NA)
Parity ratio adjusted <sup>5</sup> .....	37	33	33	(NA)	(NA)	(NA)
PPITW adjusted for productivity <sup>6</sup> .....	1458	1429	1425	(NA)	(NA)	(NA)
Crop sector (PPITW) .....	(NA)	(NA)	(NA)	107.5	106.3	105.9
Livestock sector (PPITW) .....	(NA)	(NA)	(NA)	112.8	106.9	105.5
Farm sector (production) .....	(NA)	(NA)	(NA)	120.1	107.0	104.6
Non-farm sector (production) .....	(NA)	(NA)	(NA)	104.5	103.9	103.5

(NA) Not available.

<sup>1</sup> Interest per acre on farm real estate debt and interest rate on farm non-real estate debt.

<sup>2</sup> Farm real estate taxes payable per acre.

<sup>3</sup> Bureau of Labor Statistics, Consumer Price Index for all urban consumers (CPI-U), converted by the USDA.

<sup>4</sup> Ratio of index of prices received to PPITW (1910-1914=100).

<sup>5</sup> Based on estimated cash receipts, from marketings and government payments, the preliminary adjustment factor is 1.026 for 2016 and the revised factor is 1.026 for 2015.

<sup>6</sup> PPITW is adjusted based on productivity trend for the prior 15 years.

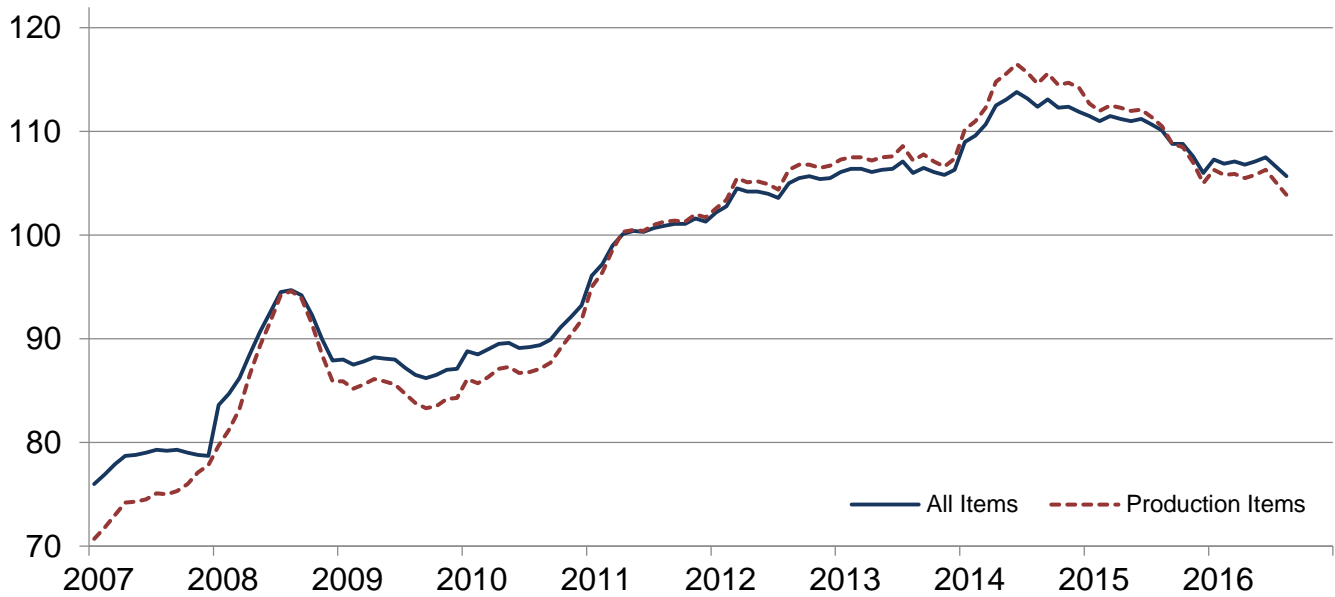
## Prices Paid Indexes and Annual Weights for Input Components and Sub-components – United States: August 2016 with Comparisons

[Revised historical price indexes for months not shown are available at [www.nass.usda.gov](http://www.nass.usda.gov). Relative weights are a five year moving average]

Index Group	Relative weights		Indexes (2011=100)		
	2015	2016	August 2015	July 2016	August 2016
	(percent)	(percent)	(percent)	(percent)	(percent)
Production items .....	74.6	75.6	110.5	105.1	103.9
Feed .....	15.5	14.5	107.4	111.1	105.2
Feed grains .....	2.2	2.1	64.4	60.7	54.5
Complete feeds .....	7.6	7.1	115.4	117.7	116.1
Hay and forages .....	1.9	1.8	91.9	85.5	85.7
Concentrates .....	2.5	2.3	127.8	154.0	127.5
Supplements .....	1.3	1.2	118.0	116.0	114.7
Livestock and poultry .....	8.3	10.5	147.4	99.5	100.9
Feeder cattle .....	6.4	8.2	159.9	100.5	103.6
Feeder pigs .....	0.7	0.8	62.9	65.0	52.1
Milk cow replacements .....	0.7	0.9	143.0	121.8	121.8
Poultry .....	0.5	0.6	102.9	102.9	102.9
Seeds .....	5.0	5.0	114.3	110.9	110.9
Field crops .....	4.5	4.5	113.7	109.5	109.5
Grasses and legumes .....	0.5	0.5	119.9	124.0	124.0
Fertilizer .....	6.4	6.2	85.3	71.0	68.2
Mixed fertilizer .....	2.8	2.7	84.2	73.0	72.2
Nitrogen .....	2.7	2.6	87.6	70.6	64.8
Potash and phosphate .....	0.9	0.9	82.1	66.2	65.6
Chemicals .....	3.2	3.2	107.6	107.1	107.8
Herbicides .....	2.0	2.0	108.6	109.0	109.7
Insecticides .....	0.7	0.7	108.1	107.4	108.1
Fungicides and other .....	0.5	0.5	102.1	98.3	99.0
Fuels .....	4.0	3.7	60.9	58.2	56.4
Diesel .....	2.5	2.3	58.5	54.2	52.9
Gasoline .....	0.8	0.8	72.4	61.6	60.0
LP gas .....	0.7	0.6	55.1	69.1	64.9
Supplies and repairs .....	4.3	4.2	105.5	105.6	106.3
Supplies .....	1.4	1.4	106.0	106.2	106.3
Repairs .....	2.9	2.8	105.2	105.4	106.2
Autos and trucks .....	1.1	1.2	105.3	105.9	105.6
Autos .....	0.1	0.2	101.2	100.7	100.4
Trucks .....	1.0	1.0	105.9	106.7	106.3
Machinery .....	5.2	5.5	114.3	114.6	114.7
Tractors .....	1.1	1.2	109.6	110.7	110.6
Self-propelled .....	2.1	2.2	117.6	117.9	118.4
Other machinery .....	2.0	2.1	113.5	113.3	113.2
Building materials .....	3.7	3.7	107.1	107.9	108.2
Services .....	10.8	10.8	114.3	117.3	117.2
Custom rates .....	1.1	1.1	111.8	111.6	111.6
Other services .....	9.7	9.7	114.6	118.0	117.9
Rent .....	7.1	7.1	120.9	122.0	122.0
Cash .....	3.8	3.8	128.7	129.0	129.0
Share .....	3.3	3.3	111.8	114.0	114.0
Interest .....	2.3	2.2	99.9	105.5	105.5
Taxes .....	2.8	2.8	123.6	128.4	128.4
Wage rates .....	6.4	6.2	111.4	113.9	113.9
Family living-CPI .....	13.9	13.2	106.0	107.0	107.1

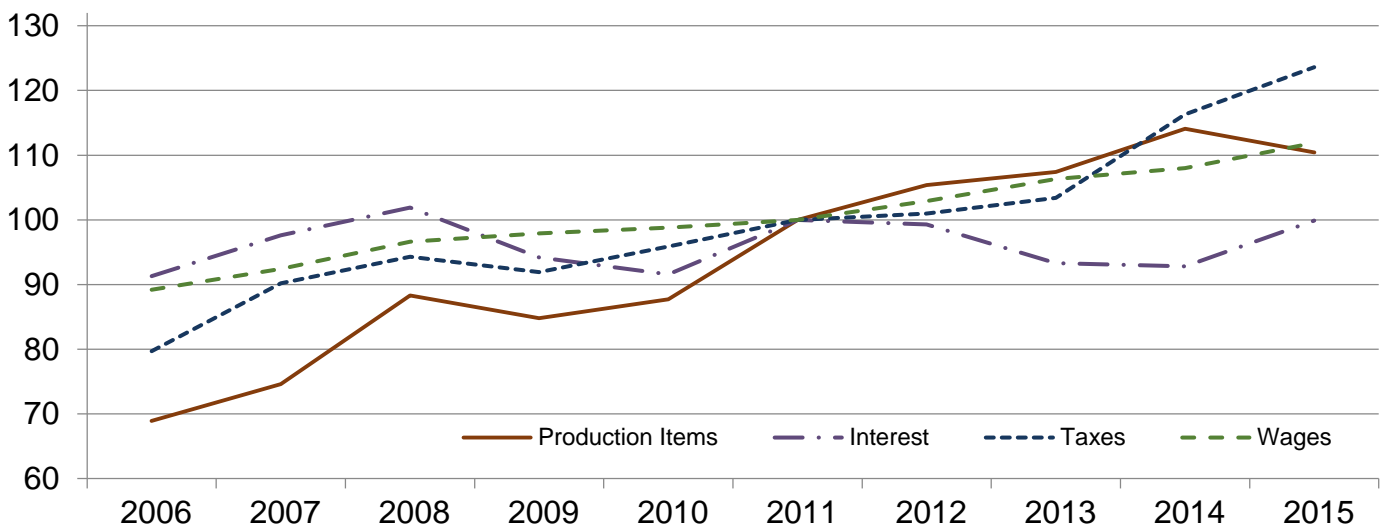
## Paid Indexes by Month, All Items and Production Items – United States: 2011=100

Percent



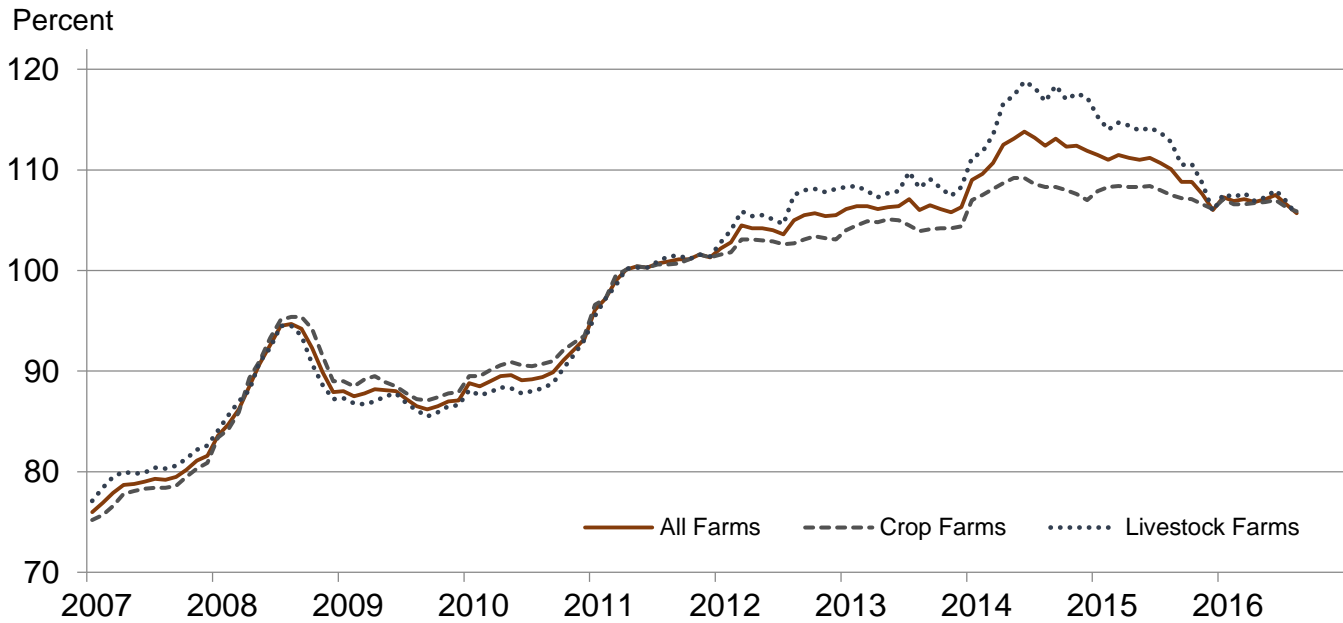
## Paid Indexes, Annual Averages, Production Items, Interest, Taxes, and Wages – United States: 2011=100

Percent

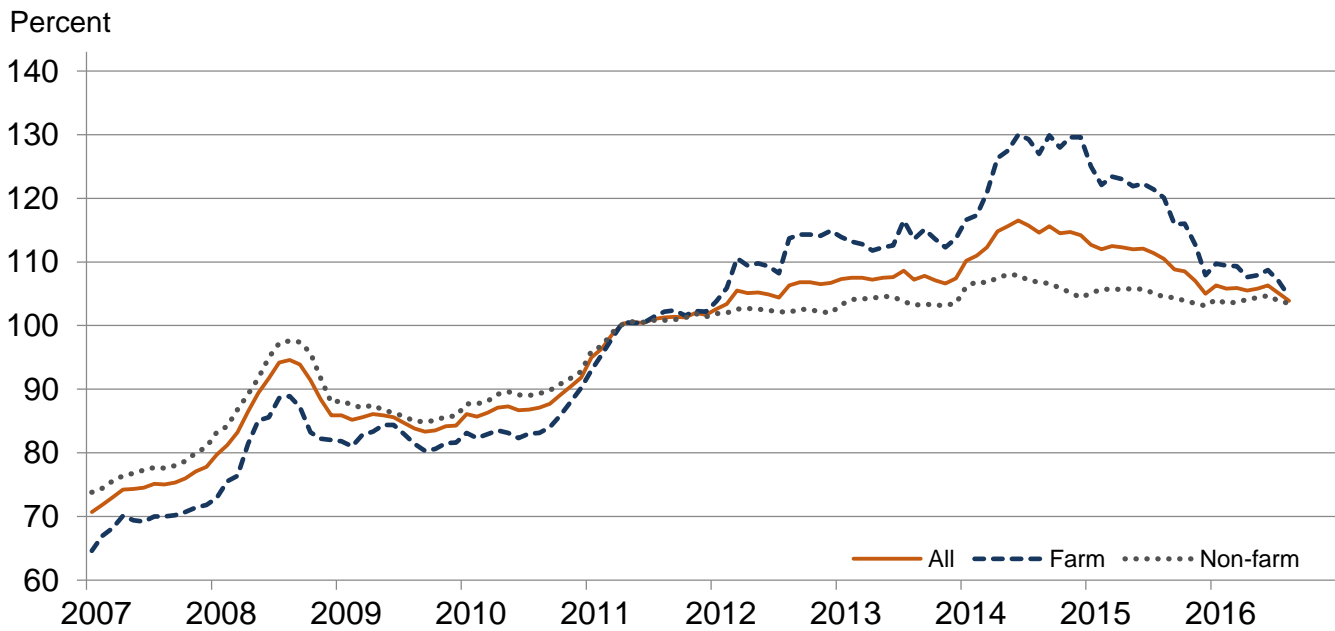




## Paid Indexes by Farm Type and Month, All Items – United States: 2011=100

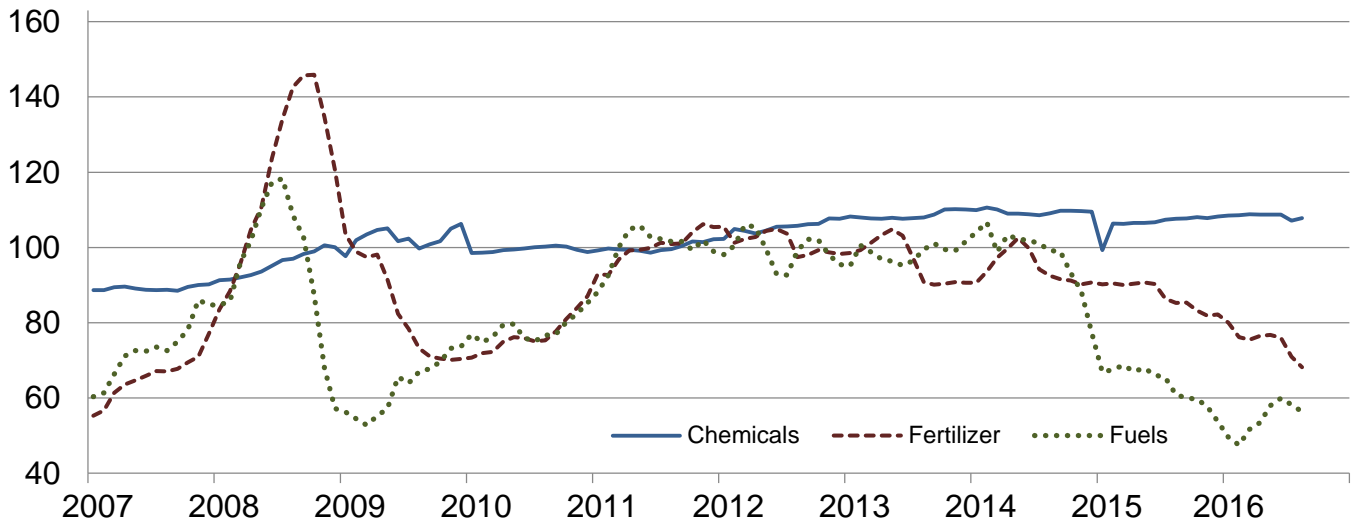


## Paid Indexes by Origin and Month, All Production Items – United States: 2011=100



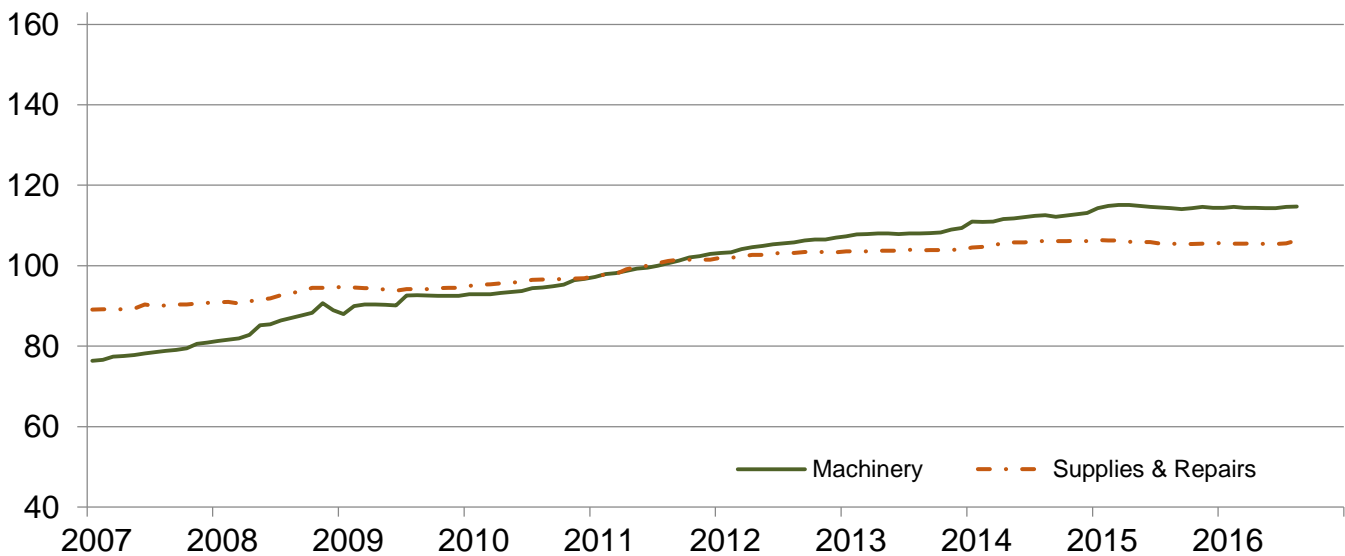
## Paid Indexes by Non-farm Origin and Month, Chemicals, Fertilizer, and Fuels – United States: 2011=100

Percent



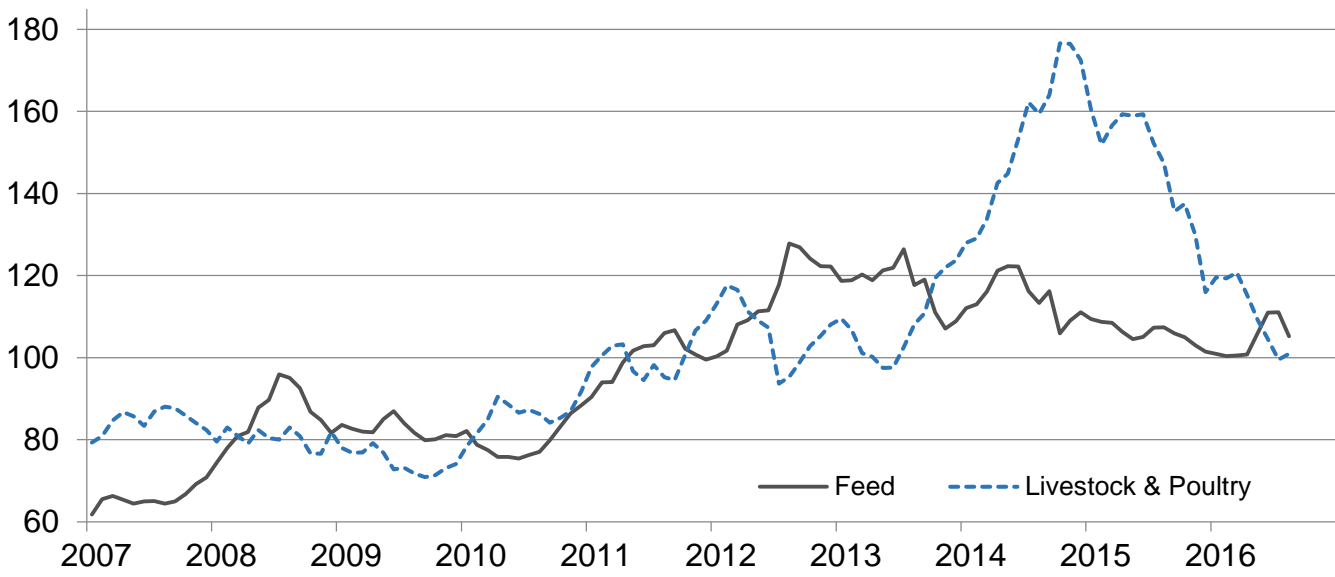
## Paid Indexes by Non-farm Origin and Month, Machinery and Supplies & Repairs – United States: 2011=100

Percent



# Paid Indexes by Farm Origin and Month, Feed and Livestock & Poultry – United States: 2011=100

Percent



## Feed Price Ratios – United States: August 2016 with Comparisons

Feed price ratio <sup>1</sup>	August 2015	July 2016	August 2016
Broiler-feed: pounds of broiler grower feed equal in value to 1 pound of broiler, live weight <sup>2</sup> .....	4.4	4.8	4.4
Market egg feed: pounds of laying feed equal in value to 1 dozen eggs <sup>3</sup> .....	26.5	4.0	4.4
Hog-corn: bushels of corn equal in value to 100 pounds of hog, live weight .....	16.0	16.5	16.4
Milk-feed: pounds of 16% mixed dairy feed equal in value to 1 pound of whole milk <sup>4</sup> .....	2.10	2.14	2.42
Steer & heifer-corn: bushels of corn equal in value to 100 pounds of steer & heifers, live weight .....	40.5	33.3	36.8
Turkey-feed: pounds of turkey grower equal in value to 1 pound of turkey, live weight <sup>5</sup> .....	9.4	9.3	9.5

<sup>1</sup> Effective January 1995, prices of commercial prepared feeds are based on current United States prices received for corn, soybeans, alfalfa hay, and all wheat.

<sup>2</sup> The price of commercial prepared broiler feed is based on current United States prices received for corn and soybeans. The modeled feed uses 58 percent corn and 42 percent soybeans.

<sup>3</sup> The price of commercial prepared layer feed is based on current United States prices received for corn and soybeans. The modeled feed uses 75 percent corn and 25 percent soybeans.

<sup>4</sup> The price of commercial prepared dairy feed is based on current United States prices received for corn, soybeans, and alfalfa. The modeled feed uses 51 percent corn, 8 percent soybeans, and 41 percent alfalfa.

<sup>5</sup> The price of commercial prepared turkey feed is based on current United States prices received for corn, soybeans, and wheat. The modeled feed uses 51 percent corn, 28 percent soybeans, and 21 percent wheat.

## Prices Received Used to Calculate Feed Price Ratios – United States: August 2016 with Comparisons

[Price data source for livestock and poultry commodities is United States Department of Agriculture's Agriculture Marketing Service]

Item	August 2015	July 2016	August 2016
	(dollars)	(dollars)	(dollars)
Broilers, live .....pound	0.470	0.520	0.450
Eggs, market .....dozen	2.38	0.361	0.367
Hogs, all .....cwt	59.00	59.40	52.60
Milk, all .....cwt	16.70	16.10	17.10
Steers and heifers .....cwt	149.00	120.00	118.00
Turkeys, live .....pound	0.897	0.866	0.842
Corn .....bushel	3.68	3.60	3.21
Hay, alfalfa .....ton	161.00	140.00	138.00
Soybeans .....bushel	9.71	10.20	9.93
Wheat, all .....bushel	4.84	3.75	3.67

## Prices Paid for Feeder Livestock – United States: August 2016 with Comparisons

[Price data source is United States Department of Agriculture's Agriculture Marketing Service]

Item	August 2015	July 2016	August 2016
	(dollars)	(dollars)	(dollars)
Feeder cattle & calves .....cwt	219.00	138.00	142.00
Feeder pigs .....cwt	88.00	91.00	73.00

## Reliability of Prices Paid Estimates

**Definition:** Prices paid by farmers represent the average costs of inputs purchased by farmers and ranchers to produce agricultural commodities. Conceptually, the average price when multiplied by quantity purchased should equal total producer expenditures for the item.

**Survey procedures:** The prices paid data are obtained from establishments that sell goods and services to farmers and ranchers. Annually, about 8,500 firms are randomly selected from lists by type of item sold with an average response rate in the range of 75-80 percent. Firms are asked to report the price for the specified item "most commonly bought by farmers" or that was the "volume seller". Approximately 135 items are surveyed each March to represent all production input items purchased. The survey reference period for most items is the five business days centered at the 15th of the month. Separate prices paid surveys are conducted for agricultural chemicals, fuels, feed, fertilizer, machinery, and seed.

**Summary and estimation procedures:** The annual March Prices Paid Survey is summarized as a non-probability survey. Average prices reported are aggregated to the region and United States level using weights available from expenditure data and other administrative sources. Price recommendations are prepared by the Regional Field Offices and Headquarters for review by the Agricultural Statistics Board in Washington, D.C. Also, the change in price level for individual items surveyed are combined to the regional and United States levels, and are published as prices paid indexes referenced to a specific base period. Prices paid indexes for new autos and trucks, building materials, farm supplies, motor supplies, and marketing containers are updated based on price changes measured in selected Bureau of Labor Statistics (BLS) indexes.

**Revisions:** Any revisions are published in the monthly and in annual issues of Agricultural Prices. The basis for revision must be supported by additional data that directly affect the level of the estimate. More revisions are likely for March when separate prices paid surveys are conducted, in lieu of BLS indexes, by the USDA to measure price change.

**Reliability:** Current methods of summarization for the March data are not designed directly to calculate sampling errors. However, analytical measures approximate the United States relative sampling errors for major items around 10 percent. Any non-sampling errors are attributed to such things as the inability to obtain correct information, differences in interpreting questions or definitions, mistakes in coding or processing the data, etc. Efforts are made at each step in the survey process to minimize these non-sampling errors.

**Program change:** Effective January 2014, the National Agricultural Statistics Service modified the five-year moving weights and updated the base reference period. In January 2015, publication of preliminary prices was suspended, and the annual average index was replaced by an annual index.

As of January 2014, the 1990-1992 base reference period was updated to 2011. Five-year moving average weights are adjusted (normalized) to minimize the effects of price changes. The 1910-1914=100 price indexes, required by statute for computing parity prices, were linked forward based on the changes in the new 2011=100 indexes. The new indexes were constructed by multiplying the ratios of the current prices to the base period prices by the moving average weights.

Modifications implemented January 2015 discontinued preliminary prices and replaced the annual average index with an annual index.

The April 2015 program update discontinued publication of the annual March survey prices paid data.

The February 2016 program update changed the rounding of the 2011 base period indexes to nearest tenth of a percent. The 1910-1914 base period indexes remain rounded to the nearest whole number.

See Price Program Links at end of this report for program change details.

## Information Contacts

### General

Jody McDaniel, Chief, Environmental, Economics and Demographics Branch..... (202) 720-6146

### Crop Prices Received

Lance Honig, Chief, Crops Branch ..... (202) 720-2127

Anthony Prillaman, Head, Field Crops Section ..... (202) 720-2127

Tony Dahlman – Oats, Soybeans ..... (202) 720-7621

Chris Hawthorn – Corn, Flaxseed, Proso Millet ..... (202) 720-9526

James Johanson – County Estimates, Hay ..... (202) 690-8533

Scott Matthews – Barley, Crop Weather..... (202) 720-7621

Jean Porter – Rye, Wheat ..... (202) 720-8068

Bianca Pruneda – Cotton, Cotton Ginnings, Peanuts, Rice, Sorghum ..... (202) 720-7688

Travis Thorson – Canola, Mustard Seed, Rapeseed, Safflower, Sunflower ..... (202) 720-7369

Jorge Garcia-Pratts, Head, Fruits, Vegetables and Special Crops Section..... (202) 720-2127

Vincent Davis – Fresh and Processing Vegetables, Onions, Strawberries..... (202) 720-2157

Jorge Garcia-Pratts – Hops ..... (202) 720-2127

Fleming Gibson – Citrus, Coffee, Sugar Crops, Tropical Fruits..... (202) 720-5412

Greg Lemmons – Berries, Cranberries, Potatoes, Sweet Potatoes ..... (202) 720-4285

Dave Losh – Hops ..... (360) 709-2400

Dan Norris – Austrian Winter Peas, Dry Beans, Dry Edible Peas, Lentils, Mint, Mushrooms, Peaches,  
Pears, Wrinkled Seed Peas ..... (202) 720-3250

Daphne Schauber – Floriculture, Grapes, Maple Syrup, Nursery, Tree Nuts ..... (202) 720-4215

Chris Singh – Apples, Apricots, Cherries, Plums, Prunes, Tobacco ..... (202) 720-4288

### Livestock Prices Received

Dan Kerestes, Chief, Livestock Branch ..... (202) 720-3570

Scott Hollis, Head, Livestock Section..... (202) 720-3570

Doug Bounds – Hogs and Pigs..... (202) 720-3106

Dave Colwell – Sheep and Goats ..... (202) 720-8784

Michael Klamm – Cattle and Cattle on Feed ..... (202) 720-3040

Mike Miller – Milk, Milk Cows..... (202) 720-3278

Bruce Boess, Head, Poultry and Specialty Commodities Section..... (202) 720-3570

Heidi Gleich – Broilers ..... (202) 720-0585

Kim Linonis – Eggs..... (202) 690-8632

Sammy Neal – Turkeys ..... (202) 720-3244

Josh O’Rear – Honey ..... (202) 690-3676

### Indexes, Prices Paid, and Parity Prices

Jody McDaniel, Chief, Environmental, Economics and Demographics Branch..... (202) 720-6146

Tony Dorn, Head, Economics Section ..... (202) 690-3223

Daryl Brinkman – Prices Received Indexes, Parity Prices..... (202) 720-8844

Courtney Charles – Prices Paid, Prices Paid Indexes..... (202) 690-3229

Greg Gholson – Prices Received Indexes, Parity Prices, Prices Paid Indexes, Prices Paid for Feed,  
Fertilizer, Chemicals, Seeds, Fuels, Farm Supplies and Repairs, Farm Machinery, Feeder Livestock,  
Poultry Chicks, Feed Price Ratios..... (202) 690-1348

Joe Hagedorn – Cash Rents, Grazing Fees..... (202) 690-3231

## Access to NASS Reports

For your convenience, you may access NASS reports and products the following ways:

- All reports are available electronically, at no cost, on the NASS web site: [www.nass.usda.gov](http://www.nass.usda.gov)
- Both national and state specific reports are available via a free e-mail subscription. To set-up this free subscription, visit [www.nass.usda.gov](http://www.nass.usda.gov) and click on “National” or “State” in upper right corner above “search” box to create an account and select the reports you would like to receive.

For more information on NASS surveys and reports, call the NASS Agricultural Statistics Hotline at (800) 727-9540, 7:30 a.m. to 4:00 p.m. ET, or e-mail: [nass@nass.usda.gov](mailto:nass@nass.usda.gov).

The U.S. Department of Agriculture (USDA) prohibits discrimination against its customers, employees, and applicants for employment on the basis of race, color, national origin, age, disability, sex, gender identity, religion, reprisal, and where applicable, political beliefs, marital status, familial or parental status, sexual orientation, or all or part of an individual's income is derived from any public assistance program, or protected genetic information in employment or in any program or activity conducted or funded by the Department. (Not all prohibited bases will apply to all programs and/or employment activities.)

If you wish to file a Civil Rights program complaint of discrimination, complete the [USDA Program Discrimination Complaint Form](#) (PDF), found online at [http://www.ascr.usda.gov/complaint\\_filing\\_cust.html](http://www.ascr.usda.gov/complaint_filing_cust.html), or at any USDA office, or call (866) 632-9992 to request the form. You may also write a letter containing all of the information requested in the form. Send your completed complaint form or letter to us by mail at U.S. Department of Agriculture, Director, Office of Adjudication, 1400 Independence Avenue, S.W., Washington, D.C. 20250-9410, by fax (202) 690-7442 or email at [program.intake@usda.gov](mailto:program.intake@usda.gov).

## Price Program Links

Economics and Prices

[http://www.nass.usda.gov/Statistics\\_by\\_Subject/Economics\\_and\\_Prices/index.php](http://www.nass.usda.gov/Statistics_by_Subject/Economics_and_Prices/index.php)

January 2014 Price Program Update

[http://www.nass.usda.gov/Surveys/Guide\\_to\\_NASS\\_Surveys/Prices/updates.pdf](http://www.nass.usda.gov/Surveys/Guide_to_NASS_Surveys/Prices/updates.pdf)

January 2015 Price Program Update

[http://www.nass.usda.gov/Surveys/Guide\\_to\\_NASS\\_Surveys/Prices/update2015.pdf](http://www.nass.usda.gov/Surveys/Guide_to_NASS_Surveys/Prices/update2015.pdf)

April 2015 Price Program Update

[http://www.nass.usda.gov/Surveys/Guide\\_to\\_NASS\\_Surveys/Prices/updateApr2015.pdf](http://www.nass.usda.gov/Surveys/Guide_to_NASS_Surveys/Prices/updateApr2015.pdf)

February 2016 Price Program Update

[http://www.nass.usda.gov/Surveys/Guide\\_to\\_NASS\\_Surveys/Prices/updateFeb2016.pdf](http://www.nass.usda.gov/Surveys/Guide_to_NASS_Surveys/Prices/updateFeb2016.pdf)

## **USDA NASS Data Users' Meeting**

**Tuesday, October 18, 2016**

Embassy Suites by Hilton Chicago Downtown Magnificent Mile  
511 North Columbus Drive  
Chicago, IL 60611  
312-836-5900

USDA's National Agricultural Statistics Service will hold an open forum for users of U.S. domestic and international agriculture data. NASS is organizing the 2016 Data Users' Meeting in cooperation with five other USDA agencies – Agricultural Marketing Service, Economic Research Service, Farm Service Agency, Foreign Agricultural Service, and World Agricultural Outlook Board – and the Census Bureau's Foreign Trade Division. Agency representatives will provide updates on recent and pending changes in statistical and information programs important to agriculture, answer questions, and welcome comments and input from data users.

For registration details or additional information about the Data Users' Meeting, see the meeting page on the NASS website ([https://www.nass.usda.gov/Education\\_and\\_Outreach/Meeting/index.php](https://www.nass.usda.gov/Education_and_Outreach/Meeting/index.php)). Or contact Tina Hall (NASS) at 202-720-3896 or at [tina.hall@nass.usda.gov](mailto:tina.hall@nass.usda.gov).

The Data Users' Meeting precedes the Industry Outlook Conference at the same location on Wednesday, October 19, 2016. The outlook meeting brings together analysts from various commodity sectors to discuss developments and trends. For registration details or additional information about the Industry Outlook Conference, see the conference page on the LMIC website (<http://lmic.info/page/meetings>). Or contact James Robb at (303) 716-9933.