

PRINCIPAL FOLLOW-UP SURVEY (PFS 2016-17)
TO THE NATIONAL TEACHER AND PRINCIPAL
SURVEY (NTPS 2015-16)

Appendix B
Questionnaires

OMB# 1850-new v.1

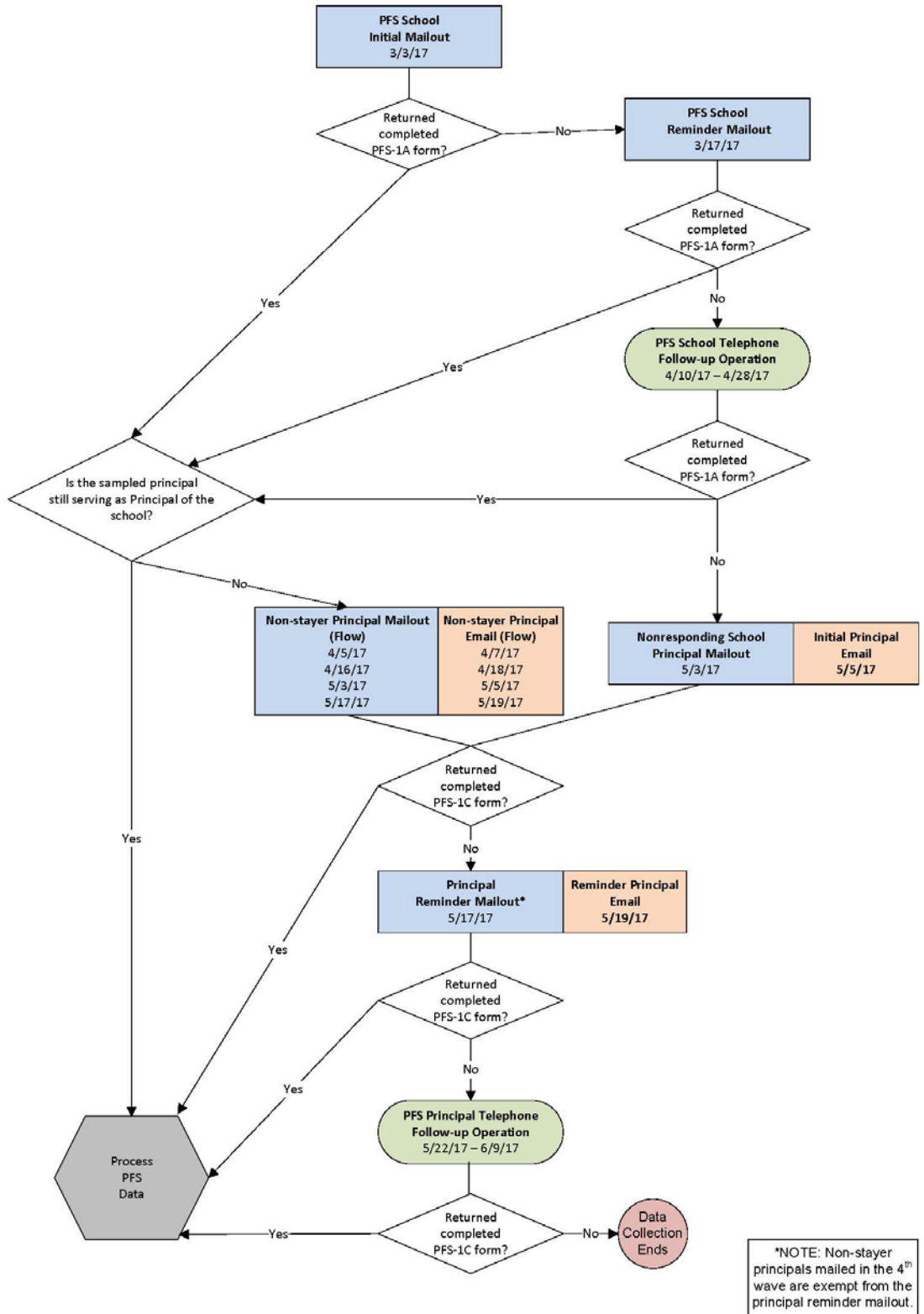
November 2016

National Center for Education Statistics
U.S. Department of Education

TABLE OF CONTENTS

A. Data Collection Operations	1
1. PFS Operations Flowchart	1
B. PFS Questionnaires	2
1. PFS-1A: PFS School Questionnaire	2
2. PFS-1A(T): PFS School Questionnaire (Telephone Centers).....	6
3. PFS-1C: PFS Principal Questionnaire.....	10
4. PFS-1C(T): PFS Principal Questionnaire (Telephone Centers).....	14

2016-17 Principal Follow-up Survey (PFS) Data Collection Operations

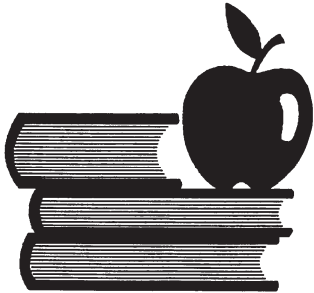


Conducted by:
U.S. DEPARTMENT OF EDUCATION
NATIONAL CENTER FOR EDUCATION STATISTICS

Collected by:
U.S. DEPARTMENT OF COMMERCE
Economics and Statistics Administration
U.S. CENSUS BUREAU

PRINCIPAL FOLLOW-UP SURVEY

(Regarding your school's 2015-2016 Principal)



(Please correct any errors in school's name, address, and ZIP Code.)

PRINCIPAL STATUS FORM

Please return this form within 2 weeks in the enclosed envelope, or mail it to:

**U.S. CENSUS BUREAU
Attn: TBD
1201 E 10th STREET
JEFFERSONVILLE IN 47132-0001**

NOTICE

This survey is authorized by the Education Sciences Reform Act of 2002, 20 U.S. Code § 9541(b) and § 9543(a). The results will only be produced as statistical summaries.

FORM **PFS-1A**
(XX-XX-20XX)

The National Center for Education Statistics is interested in Principal attrition and mobility. Please answer the following two questions about this school's Principal last year.

1. Which of the following best describes the current occupational status of last year's Principal?

🍏 Please mark (X) one box.

🍏 If this school had more than one Principal last year, think of the one who was Principal on October 1, 2015.

🍏 If this school did not have a Principal last year (2015-16 school year), mark (X) here ⁵⁰ and return the form.

Still working as Principal of this school

²⁰ Still working as Principal of this school

Still working as a Principal, but not at this school

²⁴ Working as a Principal, but in a different public school ↴

Is the principal's new school in the same District as this school?

²¹ Yes

²² No

²³ Don't know

²⁵ Working as a Principal, but in a private school

Still working in a K-12 school, but not as a Principal

²⁶ Working in this school, but not as Principal

²⁷ Working in a different public school, but not as Principal

²⁸ Working in a private school, but not as Principal

Still working in K-12 Education, but not in a K-12 school

²⁹ Working in a District or Administrative Office as a Superintendent, Assistant Superintendent, or other higher-level Administrator

³⁰ Working in a District or Administrative Office, in a position other than that of Superintendent, Assistant Superintendent, or other higher-level Administrator

³¹ Working at a job associated with K-12 education, but not directly associated with any schools or school system

Working at a job outside of K-12 Education

³² Working at a job outside of K-12 education

Other

³³ Retired – not working outside the home

³⁴ On leave (e.g., maternity/paternity, military, disability, sabbatical)

³⁵ Deceased

³⁶ Other – Specify _____

2. For some schools, we have a record of the name of last year's Principal (who may also be the current Principal).

Name we have:

Is this the name of the school's 2015–16 Principal, with first and last names in the right order and no nicknames?

¹ Yes

² No, this is not the name of the 2015–16 Principal OR

↓ there is no name above

What is the name of this school's 2015–16 Principal? *(Please print)*

Title _____

First Name _____

Middle Initial _____

Last Name _____

Suffix _____

Paperwork Burden Statement

According to the Paperwork Reduction Act of 1995, no persons are required to respond to a collection of information unless it displays a valid OMB control number. The valid OMB control number for this voluntary information collection is 1850-XXXX. The time required to complete this information collection is estimated to average 5 minutes per response, including the time to review instructions, search existing data resources, gather the data needed, and complete and review the information collection. If you have any comments concerning the accuracy of the time estimate, suggestions for improving this collection, or comments or concerns about the contents or the status of your individual submission of this questionnaire, please e-mail: [TBD: insert email] or write directly to: National Teacher and Principal Survey (NTPS), National Center for Education Statistics (NCES), 550 12th St. SW #4014, Washington, DC 20004.

To learn more about this survey and to access reports from earlier collections, see the National Teacher and Principal Survey (NTPS) website at: <http://nces.ed.gov/surveys/ntps>

Additional data collected by the National Center for Education Statistics (NCES) on a variety of topics in elementary, secondary, postsecondary, and international education are available from NCES' website at: <http://nces.ed.gov>

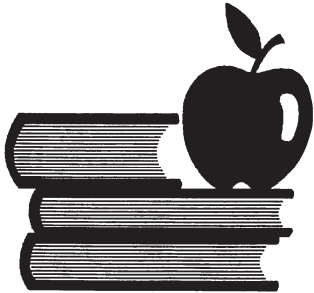
For additional data collected by various Federal agencies, including the Department of Education, visit the Federal Statistics clearinghouse at: <http://www.fedstats.sites.usa.gov>

Conducted by:
U.S. DEPARTMENT OF EDUCATION
NATIONAL CENTER FOR EDUCATION STATISTICS

Collected by:
U.S. DEPARTMENT OF COMMERCE
Economics and Statistics Administration
U.S. CENSUS BUREAU

PRINCIPAL FOLLOW-UP SURVEY

(Regarding your school's 2015-2016 Principal)



(Please correct any errors in school's name, address, and ZIP Code.)

PRINCIPAL STATUS FORM

Please return this form within 2 weeks in the enclosed envelope, or mail it to:

**U.S. CENSUS BUREAU
Attn: TBD
1201 E 10th STREET
JEFFERSONVILLE IN 47130**

NOTICE

This survey is authorized by the Education Sciences Reform Act of 2002, 20 U.S. Code § 9541(b) and § 9543(a). The results will only be produced as statistical summaries.

FORM **PFS-1A(T)**
(XX-XX-20XX)

The National Center for Education Statistics is interested in Principal attrition and mobility. Please answer the following two questions about this school's Principal last year.

1. Which of the following best describes the current occupational status of last year's Principal?

🍏 Please read the non-italicized options to the respondent and the most appropriate answer within the correct answer category.

🍏 If this school had more than one Principal last year, think of the one who was Principal on October 1, 2015.

🍏 If this school did not have a Principal last year (2015-16 school year), mark (X) here and return the form.

Still working as Principal of this school

20 Still working as Principal of this school

Still working as a Principal, but not at this school

24 Working as a Principal, but in a different public school ↴

Is the principal's new school in the same District as this school?

21 Yes

22 No

23 Don't know

25 Working as a Principal, but in a private school

38 *Still working as a Principal, but not at this school – unknown if public or private*

Still working in a K–12 school, but not as a Principal

26 Working in this school, but not as Principal

27 Working in a different public school, but not as Principal

28 Working in a private school, but not as Principal

39 *Left school, still working in a K–12 school, but not as Principal – unknown if public or private*

Still working in K–12 Education, but not in a K–12 school

29 Working in a District or Administrative Office as a Superintendent, Assistant Superintendent, or other higher-level Administrator

30 Working in a District or Administrative Office, in a position other than that of Superintendent, Assistant Superintendent, or other higher-level Administrator

31 Working at a job associated with K–12 education, but not directly associated with any schools or school system

40 *Still working in K–12 education, but not in a K–12 school – position unknown*

Working at a job outside of K–12 Education

32 Working at a job outside of K–12 education

41 *Left school, working – unknown if related to K–12 education*

Other

33 Retired – not working outside the home

34 On leave (e.g., maternity/paternity, military, disability, sabbatical)

35 Deceased

36 Other – Specify _____

37 *Left school – status unknown*

2. For some schools, we have a record of the name of last year's Principal (who may also be the current Principal).

Name we have:

Is this the name of the school's 2015–16 Principal, with first and last names in the right order and no nicknames?

¹ Yes

² No, this is not the name of the 2015–16 Principal OR

↓ there is no name above

What is the name of this school's 2015–16 Principal? *(Please print)*

Title _____

First Name _____

Middle Initial _____

Last Name _____

Suffix _____

Paperwork Burden Statement

According to the Paperwork Reduction Act of 1995, no persons are required to respond to a collection of information unless it displays a valid OMB control number. The valid OMB control number for this voluntary information collection is 1850-XXXX. The time required to complete this information collection is estimated to average 5 minutes per response, including the time to review instructions, search existing data resources, gather the data needed, and complete and review the information collection. If you have any comments concerning the accuracy of the time estimate, suggestions for improving this collection, or comments or concerns about the contents or the status of your individual submission of this questionnaire, please e-mail: [TBD: insert email] or write directly to: National Teacher and Principal Survey (NTPS), National Center for Education Statistics (NCES), 550 12th St. SW #4014, Washington, DC 20004.

To learn more about this survey and to access reports from earlier collections, see the National Teacher and Principal Survey (NTPS) website at: <http://nces.ed.gov/surveys/ntps>

Additional data collected by the National Center for Education Statistics (NCES) on a variety of topics in elementary, secondary, postsecondary, and international education are available from NCES' website at: <http://nces.ed.gov>

For additional data collected by various Federal agencies, including the Department of Education, visit the Federal Statistics clearinghouse at: <http://www.fedstats.sites.usa.gov>

Conducted by:
U.S. DEPARTMENT OF EDUCATION
NATIONAL CENTER FOR EDUCATION STATISTICS

Collected by:
U.S. DEPARTMENT OF COMMERCE
Economics and Statistics Administration
U.S. CENSUS BUREAU

PRINCIPAL FOLLOW-UP SURVEY



(Please correct any errors in your name, address, and ZIP Code.)

Please return this form within 2 weeks in the enclosed envelope, or mail it to:

**U.S. CENSUS BUREAU
Attn: TBD
1201 E 10th STREET
JEFFERSONVILLE IN 47132-0001**

NOTICE

This survey is authorized by the Education Sciences Reform Act of 2002, 20 U.S. Code § 9541(b) and § 9543(a). The results will only be produced as statistical summaries.

The National Center for Education Statistics is interested in Principal attrition and mobility. According to our records, you were the principal of

during the 2015-16 school year. Please answer the following question about your current occupational status.

Which of the following best describes your current occupational status?

🍏 Please mark (X) one box.

🍏 If you were not the Principal of last year (2015-16 school year), mark (X) here and return the form.

Still working as Principal of the same school

20 Still working as Principal of the same school

Still working as a Principal, but not at the same school

24 Working as a Principal, but in a different public school ↴

Is your new school in the same District as last year's school?

21 Yes

22 No

23 Don't know

25 Working as a Principal, but in a private school

Still working in a K–12 school, but not as a Principal

26 Working in the same school, but not as Principal

27 Working in a different public school, but not as Principal

28 Working in a private school, but not as Principal

Still working in K–12 Education, but not in a K–12 school

29 Working in a District or Administrative Office as a Superintendent, Assistant Superintendent, or other higher-level Administrator

30 Working in a District or Administrative Office, in a position other than that of Superintendent, Assistant Superintendent, or other higher-level Administrator

31 Working at a job associated with K–12 education, but not directly associated with any schools or school system

Working at a job outside of K–12 Education

32 Working at a job outside of K–12 education

Other

33 Retired – not working outside the home

34 On leave (e.g., maternity/paternity, military, disability, sabbatical)

35 Deceased

36 Other – Specify _____

Paperwork Burden Statement

According to the Paperwork Reduction Act of 1995, no persons are required to respond to a collection of information unless it displays a valid OMB control number. The valid OMB control number for this voluntary information collection is 1850-XXXX. The time required to complete this information collection is estimated to average 5 minutes per response, including the time to review instructions, search existing data resources, gather the data needed, and complete and review the information collection. If you have any comments concerning the accuracy of the time estimate, suggestions for improving this collection, or comments or concerns about the contents or the status of your individual submission of this questionnaire, please e-mail:[TBD: insert email] or write directly to: National Teacher and Principal Survey (NTPS), National Center for Education Statistics (NCES), 550 12th St. SW #4014, Washington, DC 20004.

To learn more about this survey and to access reports from earlier collections, see the National Teacher and Principal Survey (NTPS) website at:
<http://nces.ed.gov/surveys/ntps>

Additional data collected by the National Center for Education Statistics (NCES) on a variety of topics in elementary, secondary, postsecondary, and international education are available from NCES' website at:
<http://nces.ed.gov>

For additional data collected by various Federal agencies, including the Department of Education, visit the Federal Statistics clearinghouse at:
<http://www.fedstats.sites.usa.gov>

Conducted by:
U.S. DEPARTMENT OF EDUCATION
NATIONAL CENTER FOR EDUCATION STATISTICS

Collected by:
U.S. DEPARTMENT OF COMMERCE
Economics and Statistics Administration
U.S. CENSUS BUREAU

PRINCIPAL FOLLOW-UP SURVEY



(Please correct any errors in your name, address, and ZIP Code.)

Please return this form within 2 weeks in the enclosed envelope, or mail it to:

**U.S. CENSUS BUREAU
Attn: TBD
1201 E 10th STREET
JEFFERSONVILLE IN 47130**

NOTICE

This survey is authorized by the Education Sciences Reform Act of 2002, 20 U.S. Code § 9541(b) and § 9543(a). The results will only be produced as statistical summaries.

The National Center for Education Statistics is interested in Principal attrition and mobility. According to our records, you were the principal of

during the 2015-16 school year. Please answer the following question about your current occupational status.

1. Which of the following best describes your current occupational status?

🍏 Please read the non-italicized options to the respondent and mark the most appropriate answer within the correct answer category.

🍏 If you were not the Principal of last year (2015-16 school year), mark (X) here and return the form.

Still working as Principal of the same school

20 Still working as Principal of the same school

Still working as a Principal, but not at the same school

24 Working as a Principal, but in a different public school ↴

Is your new school in the same District as last year's school?

21 Yes

22 No

23 Don't know

25 Working as a Principal, but in a private school

38 *Still working as a Principal, but not at this school – unknown if public or private*

Still working in a K–12 school, but not as a Principal

26 Working in the same school, but not as Principal

27 Working in a different public school, but not as Principal

28 Working in a private school, but not as Principal

39 *Left school, still working in a K–12 school, but not as Principal – unknown if public or private*

Still working in K–12 Education, but not in a K–12 school

29 Working in a District or Administrative Office as a Superintendent, Assistant Superintendent, or other higher-level Administrator

30 Working in a District or Administrative Office, in a position other than that of Superintendent, Assistant Superintendent, or other higher-level Administrator

31 Working at a job associated with K–12 education, but not directly associated with any schools or school system

40 *Still working in K–12 education, but not in a K–12 school – position unknown*

Working at a job outside of K–12 Education

32 Working at a job outside of K–12 education

41 *Left school, working – unknown if related to K–12 education*

Other

33 Retired – not working outside the home

34 On leave (e.g., maternity/paternity, military, disability, sabbatical)

35 Deceased

36 Other – Specify _____

37 *Left school – status unknown*

Paperwork Burden Statement

According to the Paperwork Reduction Act of 1995, no persons are required to respond to a collection of information unless it displays a valid OMB control number. The valid OMB control number for this voluntary information collection is 1850-XXXX. The time required to complete this information collection is estimated to average 5 minutes per response, including the time to review instructions, search existing data resources, gather the data needed, and complete and review the information collection. If you have any comments concerning the accuracy of the time estimate, suggestions for improving this collection, or comments or concerns about the contents or the status of your individual submission of this questionnaire, please e-mail:[TBD: insert email] or write directly to: National Teacher and Principal Survey (NTPS), National Center for Education Statistics (NCES), 550 12th St. SW #4014, Washington, DC 20004.

To learn more about this survey and to access reports from earlier collections, see the National Teacher and Principal Survey (NTPS) website at: <http://nces.ed.gov/surveys/ntps>

Additional data collected by the National Center for Education Statistics (NCES) on a variety of topics in elementary, secondary, postsecondary, and international education are available from NCES' website at: <http://nces.ed.gov>

For additional data collected by various Federal agencies, including the Department of Education, visit the Federal Statistics clearinghouse at: <http://www.fedstats.sites.usa.gov>