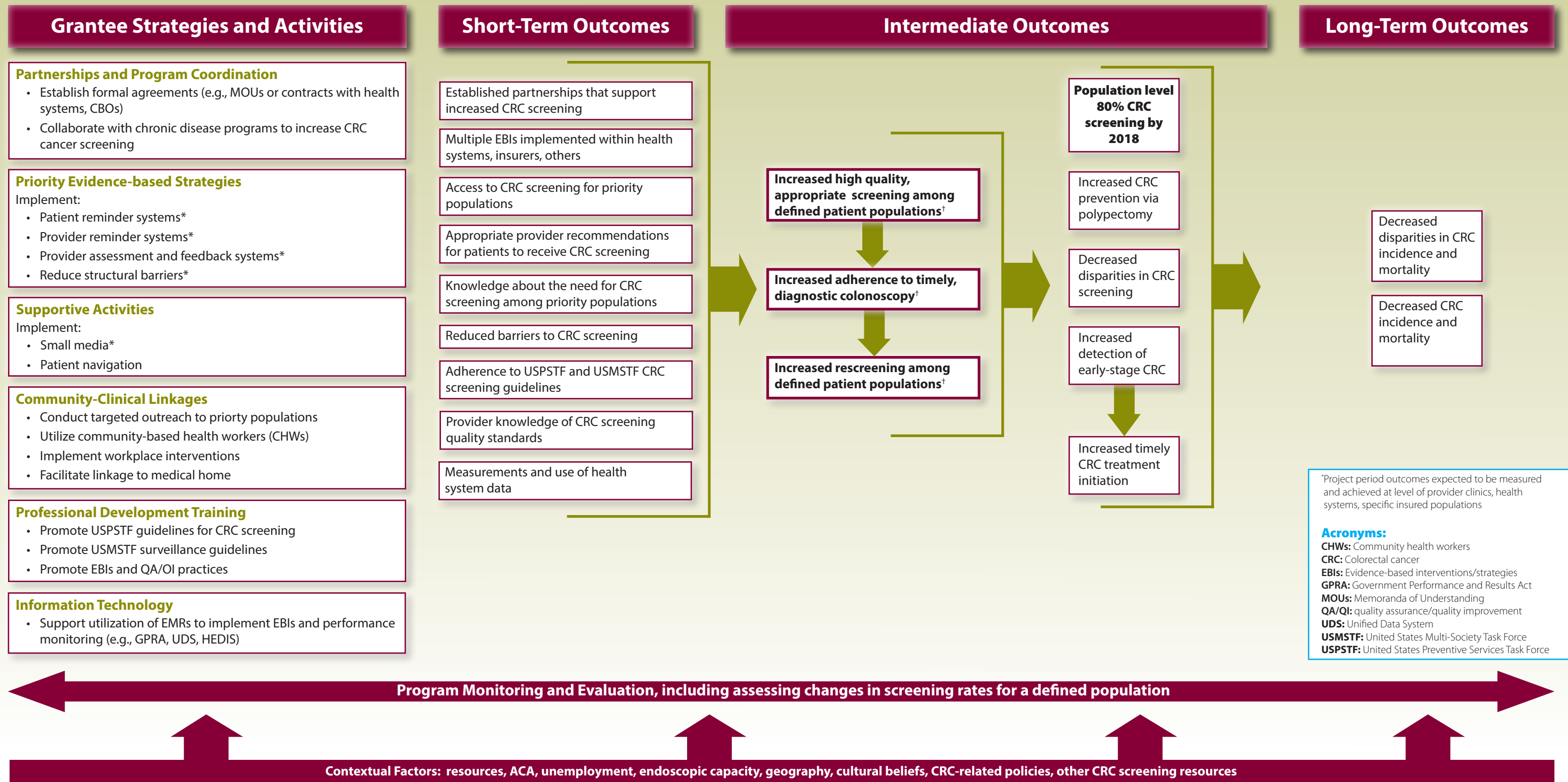


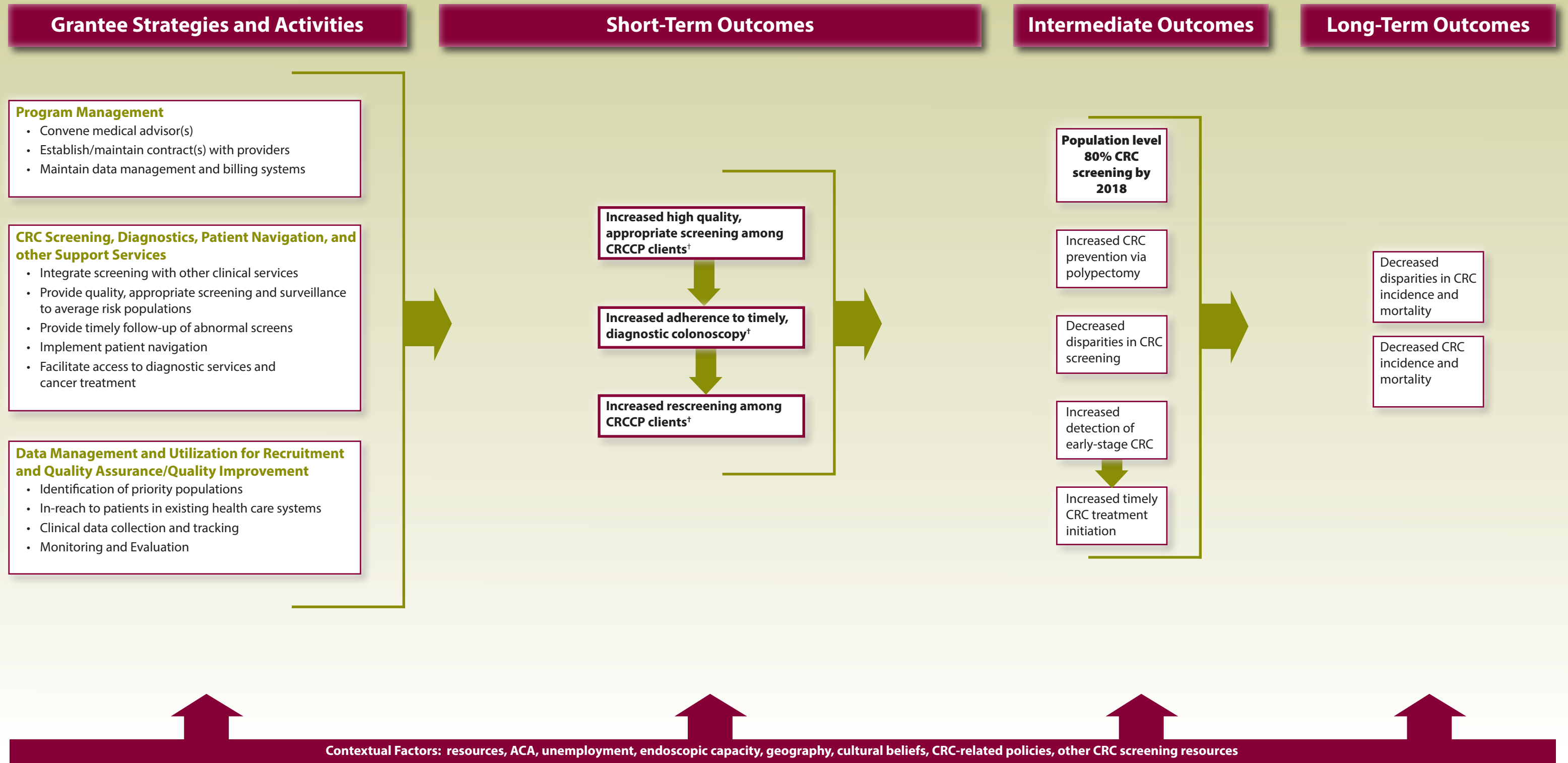
# CDC-RFA DP15-1502 Logic Model – Component 1



\*Strategies recommended by *Guide to Community Preventive Services* for increasing colorectal cancer screening by FOBT (<http://www.thecommunityguide.org/cancer/index.html>)



# CDC-RFA DP15-1502 Logic Model – Component 2



<sup>†</sup>Project period outcomes expected to be measured and achieved among CRCCP clients

**Acronyms:**  
**CRC:** Colorectal cancer  
**CRCCP:** Colorectal Cancer Control Program



**Centers for Disease Control and Prevention**  
 National Center for Chronic Disease Prevention and Health Promotion