

Transmission of material in this release is embargoed until  
8:30 a.m. (EDT) Thursday, March 12, 2015

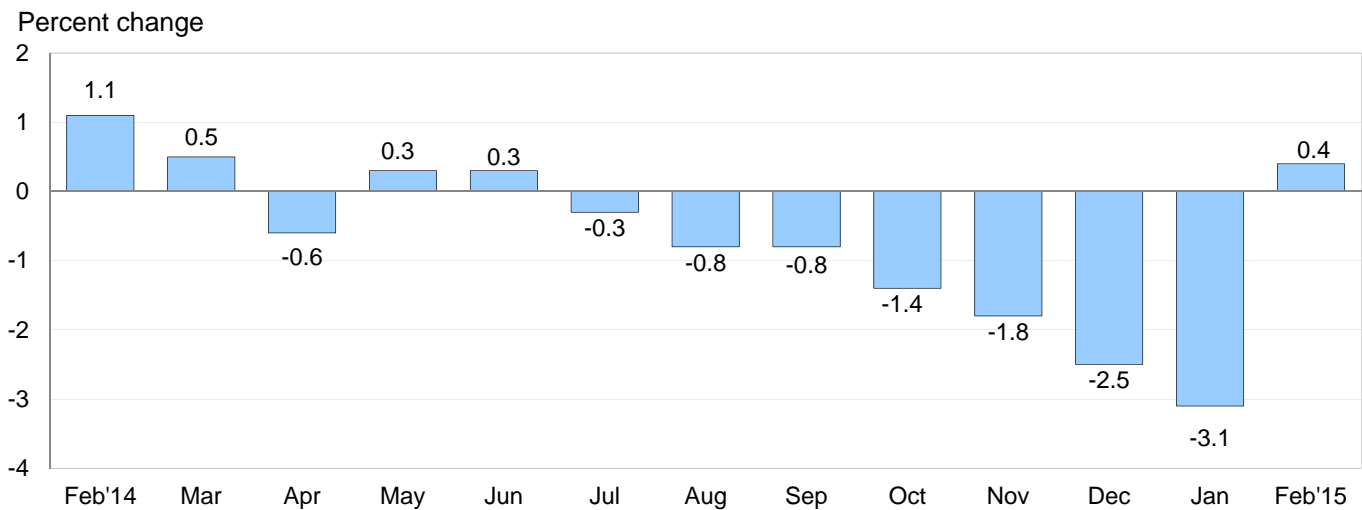
USDL-15-0387

Technical information: (202) 691-7101 • MXPinfo@bls.gov • www.bls.gov/mxp  
Media contact: (202) 691-5902 • PressOffice@bls.gov

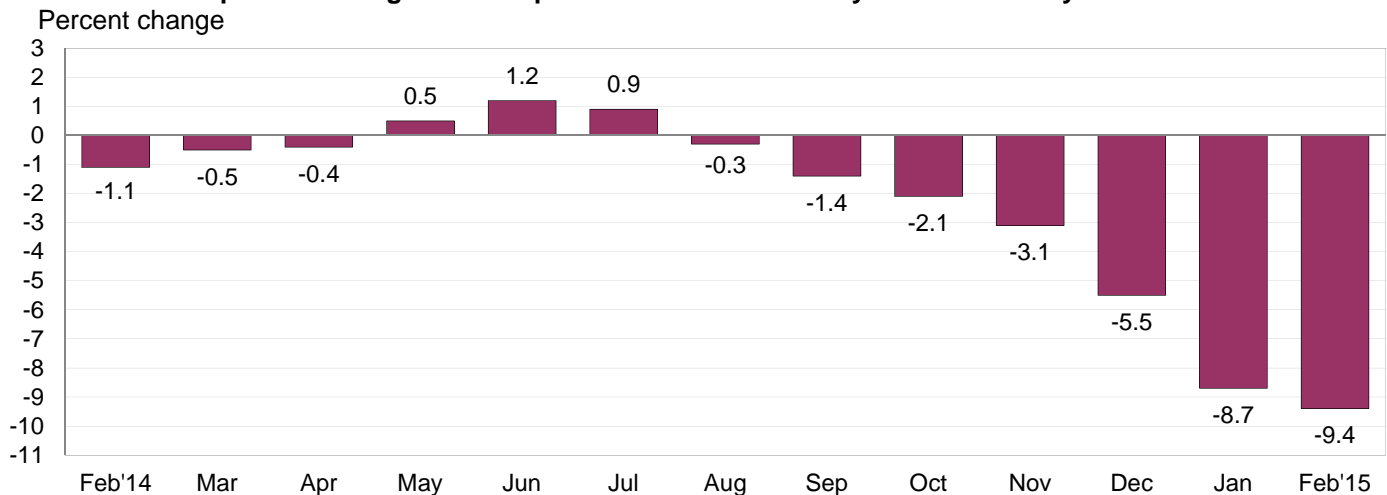
## U.S. IMPORT AND EXPORT PRICE INDEXES – FEBRUARY 2015

U.S. import prices increased 0.4 percent in February following declines of 3.1 percent in January and 2.5 percent in December, the U.S. Bureau of Labor Statistics reported today. An upturn in fuel prices led the February rise. Prices for U.S. exports edged down 0.1 percent in February, after a 1.9-percent drop the previous month.

**Chart 1. One-month percent change in the Import Price Index: February 2014 – February 2015**



**Chart 2. 12-month percent change in the Import Price Index: February 2014 – February 2015**



**All Imports:** Import prices advanced 0.4 percent in February, the first monthly rise since a 0.3-percent increase in June 2014, and the largest 1-month advance since the index rose 0.5 percent in March 2014. In February, an upturn in fuel prices more than offset declining nonfuel prices. Despite the February increase, import prices fell 9.4 percent over the past 12 months, the largest year-over-year decrease since the index fell 12.0 percent between September 2008 and September 2009.

**Fuel Imports:** The price index for import fuel increased 6.5 percent in February, the first advance since a 1.6-percent rise in June 2014. The February increase was the largest monthly advance since the index rose 7.6 percent in April 2011, and followed a 19.5-percent drop in January, the largest 1-month decline since a 22.2-percent drop in December 2008. An 8.1-percent advance in petroleum prices led the February increase in the price index for fuel, more than offsetting a 17.9-percent drop in natural gas prices. Despite the February upturn, fuel prices declined 43.0 percent over the past year. Petroleum prices declined 43.2 percent for the year ended in February, and natural gas prices decreased 52.0 percent over the same period.

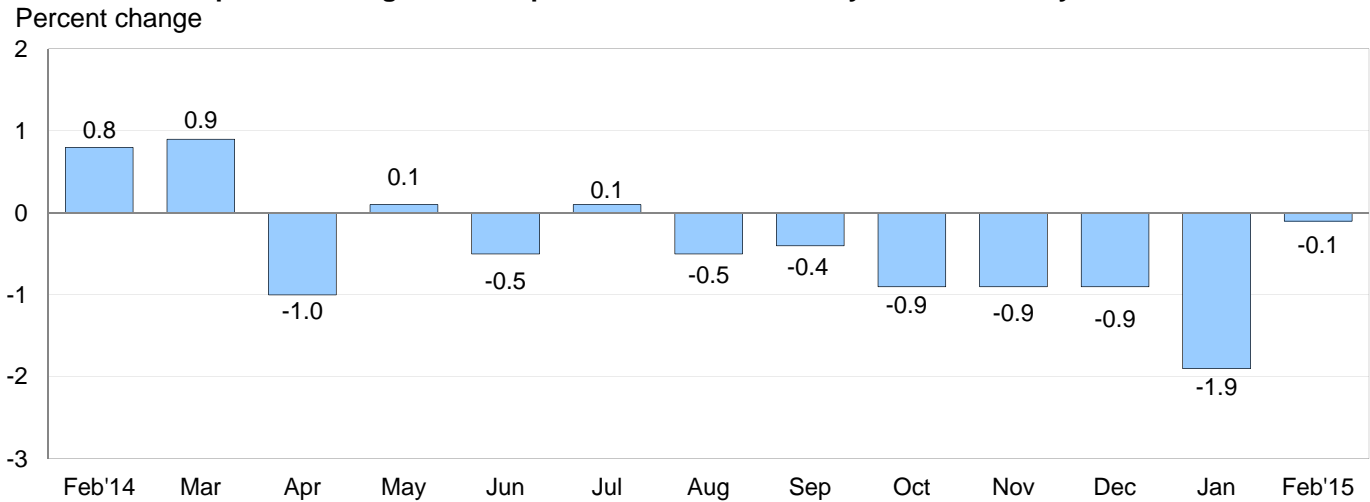
**All Imports Excluding Fuel:** Nonfuel import prices decreased 0.3 percent in February, after a 0.6-percent drop the previous month. The price index for nonfuel imports has not recorded a monthly advance since the index ticked up 0.1 percent in July 2014. In February, decreasing prices for nonfuel industrial supplies and materials; capital goods; automotive vehicles; and foods, feeds, and beverages all contributed to the overall drop in nonfuel prices. In contrast, consumer goods prices increased in February. Nonfuel import prices fell 1.2 percent for the year ended in February.

**Table A. Percent change in Import and Export Price Indexes, selected categories**

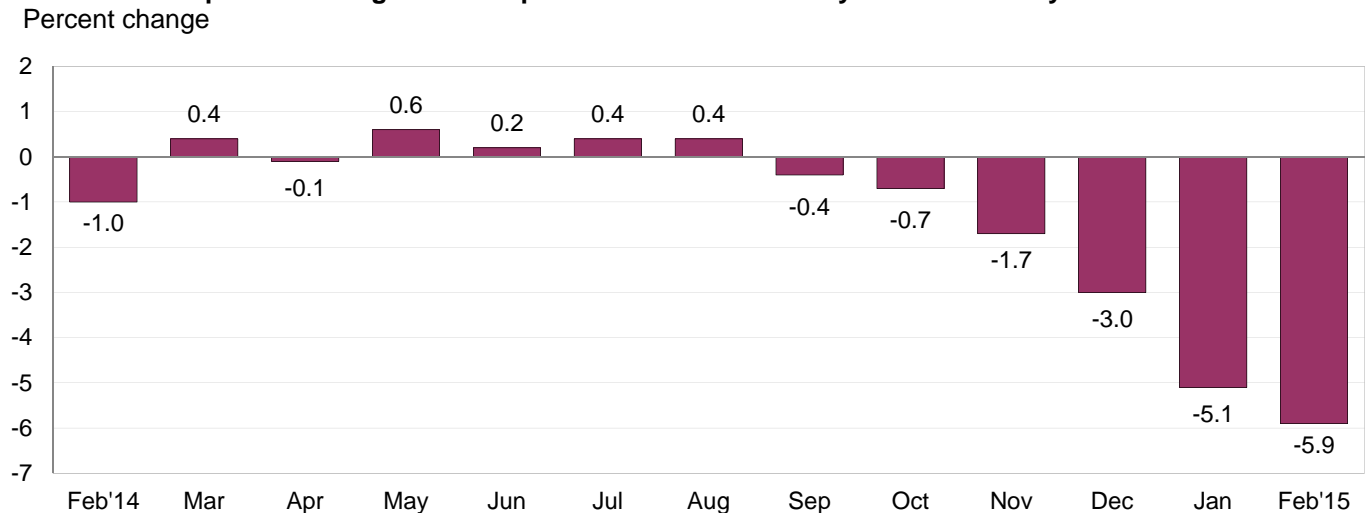
Month	IMPORTS			EXPORTS		
	All imports	Fuel imports	Nonfuel imports	All exports	Agricultural exports	Non-agricultural exports
<b>2014</b>						
February.....	1.1	5.9	0.0	0.8	1.4	0.6
March.....	0.5	1.0	0.3	0.9	2.8	0.7
April.....	-0.6	-2.6	0.0	-1.0	1.5	-1.2
May.....	0.3	1.2	0.0	0.1	0.3	0.0
June.....	0.3	1.6	-0.1	-0.5	-1.9	-0.3
July.....	-0.3	-1.5	0.1	0.1	-1.8	0.2
August.....	-0.8	-3.8	0.0	-0.5	-3.1	-0.2
September.....	-0.8	-3.6	-0.2	-0.4	-1.6	-0.2
October.....	-1.4	-6.8	-0.1	-0.9	-2.2	-0.7
November.....	-1.8	-9.3 <sup>r</sup>	-0.3	-0.9	0.1	-1.0
December.....	-2.5 <sup>r</sup>	-14.9 <sup>r</sup>	-0.1	-0.9 <sup>r</sup>	-0.7	-1.0
<b>2015</b>						
January.....	-3.1 <sup>r</sup>	-19.5 <sup>r</sup>	-0.6 <sup>r</sup>	-1.9 <sup>r</sup>	-1.2	-2.0 <sup>r</sup>
February.....	0.4	6.5	-0.3	-0.1	-2.0	0.2
Feb. 2013 to 2014.....	-1.1	-0.1	-1.2	-1.0	-5.9	-0.5
Feb. 2014 to 2015.....	-9.4	-43.0	-1.2	-5.9	-9.5	-5.5

r Revised

**Chart 3. One-month percent change in the Export Price Index: February 2014 – February 2015**



**Chart 4. 12-month percent change in the Export Price Index: February 2014 – February 2015**



**All Exports:** U.S. export prices edged down 0.1 percent in February, led by lower agricultural prices which more than offset rising nonagricultural prices. The price index for overall exports has not recorded a monthly advance since the index increased 0.1 percent in July 2014. Overall export prices also fell for the year ended in February, declining 5.9 percent, the largest 12-month drop since the index decreased 6.2 percent in August 2009.

**Agricultural Exports:** The price index for agricultural exports decreased 2.0 percent in February, after a 1.2-percent drop the previous month. A 5.1-percent decline in soybean prices drove the decrease, although lower prices for wheat, fruit, and meat were contributing factors. Agricultural prices fell 9.5 percent over the past 12 months, led by decreasing prices for soybeans, fruit, corn, and wheat.

**All Exports Excluding Agriculture:** Nonagricultural export prices rose 0.2 percent in February following a 2.0-percent decline in January and 1.0-percent decreases in both December and November. The February increase was the first advance since a 0.2-percent rise in July 2014, and was driven by higher prices for nonagricultural industrial supplies and materials and capital goods. The increases more than offset lower prices for consumer goods and automotive vehicles. Despite the February advance, nonagricultural export prices fell 5.5 percent over the past year, the largest year-over-year decrease since the index fell 6.6 percent in July 2009.

## SELECTED FEBRUARY HIGHLIGHTS

### Import Prices

**Imports by Locality of Origin:** Prices for imports from China declined 0.2 percent for the second consecutive month in February. The index fell 0.6 percent for the year ended in February, the largest 12-month drop since a 0.7-percent decrease between January 2013 and January 2014. The price index for imports from Japan fell 0.2 percent in February, after declining 0.6 percent in January and 0.5 percent in December. Import prices from Japan have not recorded a monthly advance since the index rose 0.2 percent in March 2014. Prices for imports from the European Union also decreased in February, declining 1.0 percent following a 1.4-percent drop in January. In contrast, higher petroleum prices led the price indexes for imports from Canada and Mexico up in February, 0.2 percent and 0.3 percent, respectively.

**Nonfuel Industrial Supplies and Materials:** The price index for nonfuel industrial supplies and materials decreased 1.3 percent in February following a 1.2-percent decline the previous month. Falling chemicals prices, down 2.2 percent in February and 2.1 percent in January, led both monthly declines.

**Finished Goods:** Prices for capital goods fell 0.4 percent in February, after decreasing 0.3 percent in January. The February drop was the largest 1-month decline for the index since a 0.5-percent decrease in March 2009. Automotive vehicle prices also fell in February, declining 0.2 percent following a 0.7-percent decrease the previous month. In contrast, consumer goods prices rose 0.3 percent in February.

**Foods, Feeds, and Beverages:** Foods, feeds, and beverages prices decreased 0.2 percent in February following a 1.6-percent decline the previous month. Lower coffee and vegetable prices contributed to the overall drop in foods, feeds, and beverages prices in February.

**Transportation Services:** Import air passenger fares fell 2.5 percent in February, after decreasing 6.8 percent the previous month. The index for import air passenger fares decreased 0.6 percent for the year ended in February. Import air freight prices declined 2.2 percent in February, the largest monthly decrease since the index fell 3.3 percent in January 2012. Prices for import air freight decreased 6.7 percent over the past 12 months.

### Export Prices

**Nonagricultural Industrial Supplies and Materials:** Nonagricultural industrial supplies and materials prices rose 0.7 percent in February following a 5.6-percent drop the previous month. The February rise was the first 1-month advance since the index increased 0.7 percent in July 2014, and was driven by an upturn in export fuel prices.

**Finished Goods:** The price index for export capital goods rose 0.2 percent for the second consecutive month in February. Both increases were led by higher prices for non-motor vehicle transportation equipment. In contrast, consumer goods prices and prices for automotive vehicles declined in February, down 0.5 percent and 0.3 percent, respectively.

**Transportation Services:** Export air passenger fares fell 14.3 percent in February, after advancing 0.4 percent in January. The drop was the largest monthly decline for the index since its first publication in January 2001. The index for export air passenger fares decreased 5.9 percent for the year ended in February. Export air freight prices declined 1.7 percent in February, the largest drop since the index fell 2.2 percent in July 2012. Despite the February decline, the index rose 4.2 percent over the past year.

---

**Import and Export Price Index data for March 2015 are scheduled for release on Friday, April 10, 2015 at 8:30 a.m. (EDT).**

**Table 1. U.S. import price indexes and percent changes for selected categories of goods: February 2014 to February 2015**

[2000=100, unless otherwise noted]

Description	End Use	Relative importance Jan. 2015 <sup>1</sup>	Index		Percent change				
			Jan. 2015	Feb. 2015	Annual	Monthly			
					Feb. 2014 to Feb. 2015	Oct. 2014 to Nov. 2014	Nov. 2014 to Dec. 2014	Dec. 2014 to Jan. 2015	Jan. 2015 to Feb. 2015
<b>All commodities</b> .....		100.000	126.2	126.7	-9.4	-1.8	-2.5	-3.1	0.4
<b>All imports excluding food and fuels (Dec. 2010=100)</b> .....		83.181	101.1	100.8	-1.3	-0.2	-0.2	-0.5	-0.3
<b>All imports excluding petroleum</b> .....		90.116	114.4	113.9	-1.8	-0.3	0.0	-0.6	-0.4
<b>All imports excluding fuels (Dec. 2001=100)</b> .....		89.198	118.3	117.9	-1.2	-0.3	-0.1	-0.6	-0.3
<b>Foods, feeds, &amp; beverages</b> .....	0	6.017	179.3	179.0	1.8	-0.6	0.8	-1.6	-0.2
Agricultural foods, feeds & beverages, excluding distilled beverages.....	00	4.670	197.9	197.0	3.7	-0.4	1.4	-1.9	-0.5
Nonagricultural foods (fish, distilled beverages).....	01	1.347	137.0	138.1	-3.9	-1.1	-1.4	-0.7	0.8
<b>Industrial supplies &amp; materials</b> .....	1	24.692	179.4	183.2	-27.5	-5.6	-8.4	-10.2	2.1
Industrial supplies & materials excluding petroleum.....		14.808	155.7	152.7	-7.6	-0.8	0.1	-1.6	-1.9
Industrial supplies & materials excluding fuels (Dec. 2001=100).....		13.890	174.7	172.5	-3.9	-0.8	-0.4	-1.2	-1.3
Industrial supplies & materials, durable....		8.267	162.7	161.2	-3.5	-1.2	-0.1	-0.9	-0.9
Industrial supplies & materials nondurable excluding petroleum.....		5.624	146.9	142.2	-12.3	-0.4	0.5	-2.5	-3.2
Fuels & lubricants.....	10	10.802	185.5	197.5	-43.0	-9.3	-14.9	-19.5	6.5
Petroleum & petroleum products.....	100	9.884	198.0	214.0	-43.2	-9.7	-16.2	-20.6	8.1
Crude.....	10000	7.063	198.6	223.5	-42.1	-10.1	-18.6	-20.4	12.5
Fuels, n.e.s.-coals & gas.....	101	0.721	128.3	110.5	-45.8	-1.7	9.0	-7.4	-13.9
Gas-natural.....	10110	0.561	116.2	95.4	-52.0	-2.0	11.1	-8.6	-17.9
Paper & paper base stocks.....	11	0.596	112.1	112.0	-1.4	-0.1	0.0	-0.6	-0.1
Materials associated with nondurable supplies & materials.....	12	5.098	164.9	161.6	-4.9	-0.3	-0.8	-1.9	-2.0
Selected building materials.....	13	1.225	140.7	139.7	-2.4	-0.6	-0.1	0.1	-0.7
Unfinished metals related to durable goods.....	14	3.554	224.7	221.7	-6.4	-2.1	0.0	-1.8	-1.3
Finished metals related to durable goods.....	15	1.723	155.8	154.3	-1.3	-0.8	-0.1	-0.7	-1.0
Nonmetals related to durable goods.....	16	1.694	111.7	111.5	0.0	-0.2	-0.3	0.2	-0.2
<b>Capital goods</b> .....	2	27.551	91.8	91.4	-1.0	-0.1	-0.1	-0.3	-0.4
Electric generating equipment.....	20	3.369	119.7	119.5	0.3	0.0	-0.1	-0.3	-0.2
Nonelectrical machinery.....	21	21.774	84.3	83.9	-1.3	-0.1	-0.1	-0.4	-0.5
Transportation equipment excluding motor vehicles (Dec. 2001=100).....	22	2.408	136.9	136.9	0.5	0.1	0.1	0.1	0.0
<b>Automotive vehicles, parts &amp; engines</b> .....	3	15.278	111.8	111.6	-1.3	0.0	0.0	-0.7	-0.2
<b>Consumer goods, excluding automobiles</b> .....	4	26.462	107.5	107.8	-0.3	-0.1	-0.1	-0.4	0.3
Nondurables, manufactured.....	40	12.561	118.7	118.9	0.8	0.1	0.2	-0.3	0.2
Durables, manufactured.....	41	12.424	96.2	96.3	-1.5	-0.1	-0.4	-0.3	0.1
Nonmanufactured consumer goods.....	42	1.477	119.1	122.3	1.7	-0.5	-1.2	0.1	2.7

<sup>1</sup> Relative importance figures are based on 2013 trade values.

NOTES: Data may be revised in each of the three months after original publication.

Dash = Not available

**Table 2. U.S. export price indexes and percent changes for selected categories of goods: February 2014 to February 2015**

[2000=100, unless otherwise noted]

Description	End Use	Relative importance Jan. 2015 <sup>1</sup>	Index		Percent change				
			Jan. 2015	Feb. 2015	Annual	Monthly			
					Feb. 2014 to Feb. 2015	Oct. 2014 to Nov. 2014	Nov. 2014 to Dec. 2014	Dec. 2014 to Jan. 2015	Jan. 2015 to Feb. 2015
<b>All commodities.....</b>		100.000	125.9	125.8	-5.9	-0.9	-0.9	-1.9	-0.1
<b>Agricultural commodities.....</b>		9.449	199.2	195.2	-9.5	0.1	-0.7	-1.2	-2.0
<b>All exports excluding food and fuels (Dec. 2010=100).....</b>		83.779	101.1	100.8	-1.3	-0.4	-0.1	-0.3	-0.3
<b>Nonagricultural commodities.....</b>		90.551	120.5	120.7	-5.5	-1.0	-1.0	-2.0	0.2
<b>Foods, feeds, &amp; beverages.....</b>	0	8.757	200.7	196.5	-8.6	0.1	-0.8	-1.7	-2.1
Agricultural foods, feeds & beverages, excluding distilled beverages.....	00	8.061	202.0	197.5	-9.6	0.2	-0.9	-2.0	-2.2
Nonagricultural foods (fish, distilled beverages).....	01	0.696	194.7	193.7	3.3	-1.8	1.0	2.4	-0.5
<b>Industrial supplies &amp; materials.....</b>	1	30.877	153.9	154.8	-15.3	-2.6	-2.9	-5.3	0.6
Industrial supplies & materials, durable....		11.268	164.4	162.8	-4.4	-1.7	-0.1	-0.3	-1.0
Industrial supplies & materials, nondurable.....		19.608	149.2	151.4	-20.4	-3.0	-4.4	-7.9	1.5
Agricultural industrial supplies & materials.....	10	1.388	188.5	187.0	-8.9	-0.3	0.5	3.4	-0.8
<b>Nonagricultural industrial supplies &amp; materials.....</b>		29.489	152.8	153.8	-15.5	-2.6	-3.1	-5.6	0.7
Fuels & lubricants.....	11	7.464	170.2	179.4	-36.6	-6.2	-9.0	-16.6	5.4
Nonagricultural supplies & materials excluding fuels & building materials.....	12	20.998	159.5	157.9	-4.9	-1.3	-0.7	-1.2	-1.0
Selected building materials.....	13	1.027	121.6	120.0	-6.8	0.3	-0.4	0.3	-1.3
<b>Capital goods.....</b>	2	37.731	107.6	107.8	0.8	0.0	0.1	0.2	0.2
Electrical generating equipment.....	20	3.828	115.0	114.7	-0.2	0.0	0.0	-0.3	-0.3
Nonelectrical machinery.....	21	25.889	95.5	95.5	0.2	0.0	0.1	0.1	0.0
Transportation equipment excluding motor vehicles (Dec. 2001=100).....	22	8.014	159.3	160.6	3.4	0.0	0.3	0.6	0.8
<b>Automotive vehicles, parts &amp; engines.....</b>	3	10.128	114.0	113.7	0.1	0.0	-0.1	-0.1	-0.3
<b>Consumer goods, excluding automotives.....</b>	4	12.507	113.5	112.9	-1.4	-0.3	-0.1	-0.7	-0.5
Nondurables, manufactured.....	40	5.599	110.3	109.0	-2.0	-0.4	0.5	-1.2	-1.2
Durables, manufactured.....	41	5.299	110.6	110.7	-1.5	-0.2	0.0	-0.5	0.1

<sup>1</sup> Relative importance figures are based on 2013 trade values.

NOTES: Data may be revised in each of the three months after original publication.

Dash = Not available

**Table 3. U.S. import price indexes and percent changes for selected categories of goods: February 2014 to February 2015**

[December 2005=100, unless otherwise noted]

Description	NAICS	Relative importance Jan. 2015 <sup>1</sup>	Index		Percent change				
			Jan. 2015	Feb. 2015	Annual	Monthly			
					Feb. 2014 to Feb. 2015	Oct. 2014 to Nov. 2014	Nov. 2014 to Dec. 2014	Dec. 2014 to Jan. 2015	Jan. 2015 to Feb. 2015
<b>Nonmanufactured articles.....</b>		9.987	99.8	107.5	-37.8	-8.8	-14.2	-16.4	7.7
<b>Agriculture, forestry, fishing and hunting.....</b>	11	2.066	179.3	178.2	4.1	-2.1	2.5	-3.5	-0.6
Crop production.....	111	1.647	188.4	188.1	7.7	-2.5	3.5	-4.4	-0.2
Animal production (Dec. 2014=100).....	112	0.237	97.7	94.3	—	—	—	-2.3	-3.5
Forestry and logging (Dec. 2012=100).....	113	0.116	68.4	67.3	-25.3	-1.3	0.3	0.4	-1.6
<b>Mining.....</b>	21	7.921	90.4	99.3	-42.5	-9.7	-16.6	-19.2	9.8
Mining (except oil and gas) (Dec. 2006=100).....	212	0.241	115.8	116.1	-7.6	-0.2	-0.1	-1.8	0.3
<b>Manufactured articles.....</b>		89.671	112.7	112.3	-3.4	-0.5	-0.5	-1.4	-0.4
<b>Manufactured goods, part 1.....</b>	31	11.959	125.7	125.7	0.8	-0.2	-0.2	-0.3	0.0
Food manufacturing.....	311	3.389	157.9	158.0	-0.4	-0.7	-0.4	-1.1	0.1
Beverage and tobacco product manufacturing.....	312	1.073	117.4	117.3	1.7	0.0	-0.1	0.1	-0.1
Textile mills (Dec. 2011=100).....	313	0.407	102.6	102.2	0.1	-0.1	-0.2	-0.5	-0.4
Textile product mills.....	314	0.888	113.6	113.1	-1.1	0.2	-0.4	-0.1	-0.4
Apparel manufacturing.....	315	4.325	112.0	112.0	1.5	0.1	0.0	-0.1	0.0
Leather and allied product manufacturing.....	316	1.877	124.1	124.3	1.6	0.0	0.1	0.1	0.2
<b>Manufactured goods, part 2.....</b>	32	17.420	123.0	121.8	-12.1	-1.6	-1.9	-4.8	-1.0
Wood product manufacturing.....	321	0.745	120.1	118.6	-3.5	-0.9	0.1	0.3	-1.2
Paper manufacturing.....	322	1.114	110.8	110.6	-0.1	0.0	0.4	-0.4	-0.2
Petroleum and coal products manufacturing.....	324	2.638	93.0	90.6	-45.0	-8.0	-8.7	-21.2	-2.6
Chemical manufacturing.....	325	9.559	135.3	134.3	-2.2	0.0	-0.4	-1.6	-0.7
Plastics and rubber products manufacturing.....	326	2.193	120.9	120.2	-2.5	0.2	-0.1	-0.8	-0.6
Nonmetallic mineral product manufacturing.....	327	0.964	130.2	130.2	-0.2	0.1	-0.5	0.1	0.0
<b>Manufactured goods, part 3.....</b>	33	60.292	106.6	106.3	-1.4	-0.2	-0.2	-0.5	-0.3
Primary metal manufacturing.....	331	4.271	149.8	148.1	-4.9	-1.8	-0.2	-1.6	-1.1
Fabricated metal product manufacturing.....	332	3.014	127.2	126.4	0.2	-0.2	-0.1	-0.2	-0.6
Machinery manufacturing.....	333	7.196	119.9	119.1	-1.9	-0.1	-0.2	-0.2	-0.7
Computer and electronic product manufacturing.....	334	17.686	78.8	78.6	-1.9	-0.1	-0.3	-0.5	-0.3
Electrical equipment, appliance, and component manufacturing.....	335	4.693	118.6	118.8	0.3	0.3	-0.3	-0.3	0.2
Transportation equipment manufacturing.....	336	16.386	110.7	110.6	-1.0	0.0	-0.1	-0.5	-0.1
Furniture and related product manufacturing.....	337	1.571	116.4	116.4	1.4	0.0	-0.3	0.2	0.0
Miscellaneous manufacturing.....	339	5.475	121.0	121.1	-0.2	0.1	-0.3	-0.2	0.1

<sup>1</sup> Relative importance figures are based on 2013 trade values.

NOTES: Data may be revised in each of the three months after original publication.

Dash = Not available

**Table 4. U.S. export price indexes and percent changes for selected categories of goods: February 2014 to February 2015**

[December 2005=100, unless otherwise noted]

Description	NAICS	Relative importance Jan. 2015 <sup>1</sup>	Index		Percent change				
			Jan. 2015	Feb. 2015	Annual	Monthly			
					Feb. 2014 to Feb. 2015	Oct. 2014 to Nov. 2014	Nov. 2014 to Dec. 2014	Dec. 2014 to Jan. 2015	Jan. 2015 to Feb. 2015
<b>Nonmanufactured articles.....</b>		6.736	140.9	135.0	-25.2	2.2	0.7	-4.2	-4.2
<b>Agriculture, forestry, fishing and hunting.....</b>	11	4.378	171.8	166.7	-15.0	2.0	0.4	-0.2	-3.0
Crop production.....	111	4.136	178.3	172.9	-14.7	2.2	0.5	-0.3	-3.0
<b>Mining.....</b>	21	2.358	80.3	75.1	-40.5	2.7	1.1	-10.8	-6.5
Mining (except oil and gas).....	212	1.250	92.9	90.3	-10.1	-0.1	-0.9	-2.2	-2.8
<b>Manufactured articles.....</b>		91.597	115.2	115.5	-4.4	-1.0	-1.0	-1.6	0.3
<b>Manufactured goods, part 1.....</b>	31	7.362	149.6	148.2	-2.8	-1.0	-1.1	-1.4	-0.9
Food manufacturing.....	311	5.121	171.8	169.5	-2.8	-1.5	-1.5	-2.2	-1.3
Beverage and tobacco product manufacturing.....	312	0.609	116.8	117.6	-5.8	3.7	1.3	3.1	0.7
<b>Manufactured goods, part 2.....</b>	32	23.968	113.5	114.6	-14.6	-2.6	-3.6	-5.9	1.0
Paper manufacturing.....	322	1.869	124.6	124.1	-0.7	0.0	0.2	-1.1	-0.4
Petroleum and coal products manufacturing.....	324	4.986	98.4	105.9	-39.6	-8.0	-11.9	-19.0	7.6
Chemical manufacturing.....	325	13.266	121.5	120.3	-5.8	-0.9	-1.2	-2.5	-1.0
Plastics and rubber products manufacturing.....	326	2.231	118.9	118.3	-0.4	-0.2	-0.3	0.4	-0.5
Nonmetallic mineral product manufacturing.....	327	0.814	112.4	112.7	0.2	0.1	0.2	0.2	0.3
<b>Manufactured goods, part 3.....</b>	33	60.267	112.5	112.7	0.2	-0.3	0.1	0.1	0.2
Primary metal manufacturing.....	331	4.812	142.4	144.3	-1.4	-2.2	0.8	-0.1	1.3
Fabricated metal product manufacturing.....	332	2.977	129.3	129.5	-1.7	-0.2	0.3	0.8	0.2
Machinery manufacturing.....	333	11.341	124.7	124.7	1.1	0.2	0.2	0.2	0.0
Computer and electronic product manufacturing.....	334	14.288	86.9	86.9	-1.0	-0.2	0.1	0.0	0.0
Electrical equipment, appliance, and component manufacturing.....	335	3.711	114.7	114.7	0.3	-0.2	-0.2	0.1	0.0
Transportation equipment manufacturing..	336	17.220	120.8	121.1	1.5	0.0	0.1	0.1	0.2
Furniture and related product manufacturing (Dec. 2011=100).....	337	0.380	110.3	110.2	3.9	0.0	0.4	0.6	-0.1
Miscellaneous manufacturing.....	339	5.537	123.4	123.5	-0.2	0.2	-0.8	-0.6	0.1

<sup>1</sup> Relative importance figures are based on 2013 trade values.

NOTES: Data may be revised in each of the three months after original publication.

Dash = Not available



**Table 5. U.S. import price indexes and percent changes for selected categories of goods: February 2014 to February 2015**

[2000=100, unless otherwise noted]

Description	Harmonized system	Relative importance Jan. 2015 <sup>1</sup>	Index		Percent change				
			Jan. 2015	Feb. 2015	Annual	Monthly			
					Feb. 2014 to Feb. 2015	Oct. 2014 to Nov. 2014	Nov. 2014 to Dec. 2014	Dec. 2014 to Jan. 2015	Jan. 2015 to Feb. 2015
<b>Live animals; animal products.....</b>	I	1.393	194.7	195.2	0.0	-1.0	-1.6	-1.7	0.3
Meat and edible meat offal.....	02	0.330	247.8	254.6	10.9	-1.4	-3.0	-2.8	2.7
Fish and crustaceans, molluscs and other aquatic invertebrates.....	03	0.712	135.7	137.3	-7.9	-1.6	-1.9	-0.9	1.2
<b>Vegetable products.....</b>	II	1.964	203.5	203.4	3.8	-1.9	4.8	-4.9	0.0
Edible vegetables, roots, and tubers.....	07	0.476	404.3	398.2	21.4	-7.3	18.6	-17.4	-1.5
Edible fruit and nuts; peel of citrus fruit or melons.....	08	0.508	101.4	100.8	-7.9	4.5	-1.8	3.7	-0.6
Coffee, tea, mate and spices.....	09	0.405	264.2	256.3	8.8	-2.7	1.2	1.7	-3.0
<b>Animal or vegetable fats and oils (Dec. 2009=100).....</b>	III	0.281	110.5	108.0	-3.6	-0.4	-2.7	1.3	-2.3
<b>Prepared foodstuffs, beverages, and tobacco.....</b>	IV	2.795	161.8	162.3	1.8	-0.6	0.4	-0.4	0.3
Sugars and sugar confectionary (Dec. 2012=100).....	17	0.187	91.5	91.9	6.4	0.0	1.8	-0.2	0.4
Cocoa and cocoa preparations (Dec. 2009=100).....	18	0.252	112.2	112.7	13.6	-6.6	-0.8	2.0	0.4
Preparations of cereals, flour, starch or milk; bakers' wares (Dec. 2007=100).....	19	0.281	133.8	133.5	1.7	-0.1	0.0	0.1	-0.2
Preparations of vegetables, fruit, nuts, or other parts of plants.....	20	0.345	164.7	164.9	-2.2	0.7	0.6	-1.6	0.1
Beverages, spirits, and vinegar.....	22	1.046	127.8	127.4	1.1	-0.1	-0.1	0.0	-0.3
<b>Mineral products.....</b>	V	10.723	186.6	199.0	-42.8	-9.2	-14.8	-19.5	6.6
Mineral fuels, oils and residuals, bituminous substances and mineral waxes.....	27	10.464	183.3	195.8	-43.2	-9.3	-15.1	-19.8	6.8
<b>Products of the chemical or allied industries.....</b>	VI	8.699	149.1	148.1	-2.5	-0.1	-0.3	-2.1	-0.7
Inorganic chemicals.....	28	0.705	318.2	302.9	0.3	2.5	-0.5	-6.1	-4.8
Organic chemicals.....	29	2.466	124.5	122.6	-11.0	-0.6	-1.3	-5.5	-1.5
Pharmaceutical products.....	30	3.449	135.5	136.2	2.5	0.1	0.4	0.5	0.5
Fertilizers (Dec. 2009=100).....	31	0.401	116.8	116.1	7.3	-1.5	1.5	0.0	-0.6
Tanning extracts; dye, pigments, varnish, paints & putty (Dec. 2011=100).....	32	0.215	104.4	104.5	4.0	-0.2	-0.5	-0.9	0.1
Miscellaneous chemical products.....	38	0.551	90.7	90.2	-3.3	-0.6	-0.5	-1.1	-0.6
<b>Plastics and articles thereof; rubber and articles thereof.....</b>	VII	3.456	144.9	143.7	-3.6	0.1	-0.4	-0.7	-0.8
Plastics and articles thereof.....	39	2.251	149.5	148.2	-0.8	0.1	-0.8	0.1	-0.9
Rubber and articles thereof.....	40	1.205	138.5	137.4	-8.2	0.1	0.4	-2.2	-0.8
<b>Raw hides, skins, leather, furskins, travel goods, etc.....</b>	VIII	0.719	128.3	128.4	0.8	-0.1	0.2	0.2	0.1
Articles of leather; travel goods, bags, etc. of various materials.....	42	0.669	130.7	130.7	1.5	-0.1	0.2	0.2	0.0
<b>Wood, wood charcoal, cork, straw, basketware and wickerwork.....</b>	IX	0.771	145.5	143.9	-3.4	-0.9	0.0	0.2	-1.1
Wood and articles of wood; wood charcoal (Dec. 2014=100).....	44	0.734	100.2	99.0	-	-	-	0.2	-1.2
<b>Woodpulp, recovered paper, and paper products.....</b>	X	1.162	113.1	113.1	-0.8	0.0	0.3	-0.2	0.0
Paper and paperboard; articles of paper pulp, paper or paperboard.....	48	0.774	107.1	106.9	-0.3	-0.2	0.1	0.2	-0.2
<b>Textile and textile articles.....</b>	XI	5.462	114.8	114.8	1.0	0.1	-0.2	-0.1	0.0

See footnotes at end of table.

**Table 5. U.S. import price indexes and percent changes for selected categories of goods: February 2014 to February 2015 — Continued**  
 [2000=100, unless otherwise noted]

Description	Harmoni- zied system	Relative importance Jan. 2015 <sup>1</sup>	Index		Percent change				
			Jan. 2015	Feb. 2015	Annual	Monthly			
					Feb. 2014 to Feb. 2015	Oct. 2014 to Nov. 2014	Nov. 2014 to Dec. 2014	Dec. 2014 to Jan. 2015	Jan. 2015 to Feb. 2015
Articles of apparel and clothing accessories, knitted or crocheted.....	61	2.176	103.9	103.9	1.7	0.1	0.0	-0.1	0.0
Articles of apparel and clothing accessories, not knitted or crocheted.....	62	1.958	120.3	120.4	1.3	0.2	-0.1	0.0	0.1
Made-up or worn textile articles.....	63	0.640	107.4	106.8	-1.0	0.2	-0.1	-0.2	-0.6
<b>Headgear, umbrellas, artificial flowers, etc...</b>	XII	1.485	122.7	122.8	1.4	0.0	0.1	0.0	0.1
Footwear and parts of such articles.....	64	1.293	122.0	122.2	1.4	0.0	0.1	0.0	0.2
<b>Stone, plaster, cement, asbestos, ceramics, glass etc.....</b>	XIII	0.895	132.2	132.1	-0.8	0.1	-0.5	-0.2	-0.1
Ceramic products.....	69	0.268	138.6	137.9	-2.1	-0.1	-1.6	-0.5	-0.5
Glass and glassware.....	70	0.312	129.0	129.0	-0.9	-0.2	-0.1	-0.2	0.0
<b>Pearls, stones, precious metals, imitation jewelry, and coins.....</b>	XIV	3.077	173.6	176.2	-1.3	-2.2	0.3	0.4	1.5
<b>Base metals and articles of base metals. ...</b>	XV	5.565	177.6	174.4	-3.6	-0.7	-0.7	-1.6	-1.8
Iron and steel.....	72	1.263	212.5	202.9	-8.3	-1.4	-1.1	-2.2	-4.5
Articles of iron or steel.....	73	1.714	152.5	150.9	-0.9	-0.6	-0.8	-0.7	-1.0
Copper and articles thereof.....	74	0.480	301.5	285.6	-17.4	-1.6	-1.0	-3.5	-5.3
Aluminum and articles thereof.....	76	0.772	138.2	139.2	2.4	1.1	-1.4	-2.7	0.7
Tools, implements, cutlery, spoons and forks, of base metal; parts thereof.....	82	0.445	128.9	128.9	-0.1	0.0	0.0	-0.1	0.0
Miscellaneous articles of base metal.....	83	0.517	138.0	138.1	1.7	0.0	0.1	-0.1	0.1
<b>Machinery, electrical equipment, TV image and sound recorders, parts, etc.....</b>	XVI	29.789	83.4	83.1	-1.5	-0.2	-0.2	-0.4	-0.4
Machinery and mechanical appliances; parts thereof.....	84	15.147	88.6	88.2	-1.2	0.0	-0.2	-0.4	-0.5
Electrical machinery and equip, sound and TV recorders & reproducers, parts.....	85	14.642	78.3	78.3	-1.8	-0.3	-0.4	-0.5	0.0
<b>Vehicles, aircraft, vessels and associated transport equipment.....</b>	XVII	13.727	114.9	114.9	-0.9	-0.1	-0.1	-0.4	0.0
Motor vehicles and their parts.....	87	12.402	113.5	113.5	-1.0	-0.1	-0.1	-0.5	0.0
Aircraft, spacecraft, and parts thereof (Dec. 2002=100).....	88	1.232	120.2	120.2	-0.2	0.0	0.0	0.0	0.0
<b>Optical, photo, measuring, medical &amp; musical instruments; &amp; timepieces.....</b>	XVIII	3.887	104.1	104.0	-0.2	0.2	0.2	-0.3	-0.1
Optical, photographic, measuring and medical instruments.....	90	3.565	100.9	100.7	-0.2	0.0	0.2	-0.2	-0.2
Clocks and watches and parts thereof.....	91	0.260	142.3	142.9	-0.4	1.7	-0.1	-0.7	0.4
<b>Miscellaneous manufactured articles.....</b>	XX	4.041	113.9	113.8	0.7	0.1	0.1	-0.2	-0.1
Furniture & stuffed furnishings; lamps & lighting fittings, nesoi; prefab bldgs.....	94	2.442	118.9	118.6	1.4	0.3	0.1	0.1	-0.3
Toys, games and sports equipment; parts and accessories thereof.....	95	1.340	105.1	105.1	-0.3	0.2	0.0	-0.7	0.0
Miscellaneous manufactured articles.....	96	0.259	135.7	135.6	-0.3	-0.7	0.0	0.6	-0.1

<sup>1</sup> Relative importance figures are based on 2013 trade values.

NOTES: Data may be revised in each of the three months after original publication.

Dash = Not available

**Table 6. U.S. export price indexes and percent changes for selected categories of goods: February 2014 to February 2015**

[2000=100, unless otherwise noted]

Description	Harmoni- zied system	Relative importance Jan. 2015 <sup>1</sup>	Index		Percent change				
			Jan. 2015	Feb. 2015	Annual	Monthly			
					Feb. 2014 to Feb. 2015	Oct. 2014 to Nov. 2014	Nov. 2014 to Dec. 2014	Dec. 2014 to Jan. 2015	Jan. 2015 to Feb. 2015
<b>Live animals; animal products.....</b>	I	2.082	221.2	215.6	-5.0	-2.3	-4.6	-4.5	-2.5
Meat & edible meat offal (Dec. 2006=100)...	02	1.260	177.4	173.5	3.6	-1.3	-5.1	-4.4	-2.2
Fish and crustaceans, molluscs and other aquatic invertebrates.....	03	0.410	215.0	213.8	5.0	-1.5	2.4	1.6	-0.6
<b>Vegetable products.....</b>	II	4.193	223.0	215.8	-12.6	2.0	1.2	-1.0	-3.2
Edible fruit and nuts; peel of citrus fruit or melons.....	08	1.174	184.6	182.3	-4.7	-5.4	4.4	-1.7	-1.2
Cereals.....	10	1.101	219.8	207.5	-14.2	6.3	3.4	-3.5	-5.6
Oilseeds and misc. grains, seeds, fruits, plants, straw and fodder.....	12	1.498	224.9	215.6	-19.5	6.0	-2.8	1.4	-4.1
<b>Animal or vegetable fats and oils (Dec. 2009=100).....</b>	III	0.219	104.9	97.0	-12.8	-1.5	0.7	0.3	-7.5
<b>Prepared foodstuffs, beverages, and tobacco.....</b>	IV	3.066	162.3	161.8	-3.1	-0.1	0.7	-0.1	-0.3
Preparations of vegetables, fruit, nuts or other parts of plants (Dec. 2009=100)....	20	0.400	118.5	118.4	3.1	-0.2	0.0	0.9	-0.1
Beverages, spirits, and vinegar (Dec. 2008=100).....	22	0.508	110.2	110.3	-0.3	2.0	-1.2	-0.5	0.1
Residues and waste from the food industries; prepared animal feed.....	23	0.808	244.7	244.0	-11.5	-0.3	5.0	0.5	-0.3
<b>Mineral products.....</b>	V	7.411	198.0	204.1	-38.6	-5.6	-8.7	-16.2	3.1
Ores, slag and ash (Dec. 2012=100).....	26	0.498	89.8	88.7	-4.4	-0.1	-2.1	-3.9	-1.2
Mineral fuels, oils and residuals, bituminous substances and mineral waxes.....	27	6.726	189.9	196.7	-40.7	-6.0	-9.4	-17.3	3.6
<b>Products of the chemical or allied industries.....</b>	VI	10.818	143.6	142.7	-4.5	-0.7	-0.7	-1.9	-0.6
Inorganic chemicals.....	28	0.832	173.0	174.0	-1.0	-0.4	1.1	-0.3	0.6
Organic chemicals.....	29	2.919	145.8	144.5	-11.2	-1.7	-3.8	-5.7	-0.9
Pharmaceutical products.....	30	2.608	113.5	111.4	-3.5	-0.6	0.9	-1.0	-1.9
Essential oils and resinoids; perfumery cosmetic or toilet preparations.....	33	0.783	136.3	135.9	2.0	-0.2	0.0	2.5	-0.3
Soap; lubricants; waxes, polishing or scouring products; candles, pastes.....	34	0.489	117.1	113.7	-6.3	-0.8	0.0	-0.1	-2.9
Miscellaneous chemical products.....	38	1.875	151.6	152.8	-2.7	-0.1	0.7	-1.6	0.8
<b>Plastics and articles thereof; rubber and articles thereof.....</b>	VII	5.255	146.6	144.2	-3.8	-1.0	-0.6	-1.3	-1.6
Plastics and articles thereof.....	39	4.284	141.9	139.8	-3.5	-0.8	-0.6	-1.5	-1.5
Rubber and articles thereof.....	40	0.971	166.1	162.9	-5.3	-1.7	-0.7	-0.7	-1.9
<b>Raw hides, skins, leather, furskins, travel goods, etc.....</b>	VIII	0.445	150.0	148.7	-3.3	-1.3	-3.0	-2.0	-0.9
Raw hides and skins other than furskins and leather (Dec.2014=100).....	41	0.276	97.1	96.4	-	-	-	-2.9	-0.7
<b>Wood, wood charcoal, cork, straw, baskets and wickerwork (Dec. 2014=100).....</b>	IX	0.635	101.0	100.5	-	-	-	1.0	-0.5
<b>Woodpulp, recovered paper, and paper products.....</b>	X	2.244	124.9	123.4	-1.7	-0.2	0.3	-0.9	-1.2
Woodpulp and recovered paper.....	47	0.634	127.3	122.6	-6.3	-0.2	0.5	-1.9	-3.7
Paper and paperboard; articles of paper pulp, paper or paperboard.....	48	1.202	124.0	123.7	-0.2	-0.2	0.2	-0.7	-0.2
Printed material (Dec. 2014=100).....	49	0.408	100.3	100.3	-	-	-	0.3	0.0
<b>Textile and textile articles.....</b>	XI	1.788	123.6	122.9	-9.6	-1.3	-0.8	-0.9	-0.6

See footnotes at end of table.

**Table 6. U.S. export price indexes and percent changes for selected categories of goods: February 2014 to February 2015 — Continued**  
 [2000=100, unless otherwise noted]

Description	Harmonized system	Relative importance Jan. 2015 <sup>1</sup>	Index		Percent change				
			Jan. 2015	Feb. 2015	Annual	Monthly			
					Feb. 2014 to Feb. 2015	Oct. 2014 to Nov. 2014	Nov. 2014 to Dec. 2014	Dec. 2014 to Jan. 2015	Jan. 2015 to Feb. 2015
Cotton, including yarns and woven fabrics thereof.....	52	0.455	119.8	117.7	-23.6	-3.0	-2.2	-1.5	-1.8
<b>Stone, plaster, cement, asbestos, ceramics, glass etc.....</b>	XIII	0.814	122.4	122.4	2.7	0.1	0.2	1.7	0.0
Glass and glassware.....	70	0.421	99.4	99.4	1.6	0.1	0.4	0.5	0.0
<b>Pearls, stones, precious metals, imitation jewelry, and coins.....</b>	XIV	4.762	236.2	240.6	-0.6	-2.4	0.4	-0.2	1.9
<b>Base metals and articles of base metals. ...</b>	XV	5.330	157.9	154.5	-6.6	-0.9	-0.7	-1.3	-2.2
Iron and steel.....	72	1.320	178.9	167.2	-10.3	-3.2	-2.4	-0.1	-6.5
Copper and articles thereof.....	74	0.518	192.7	182.9	-21.4	0.2	-2.3	-4.5	-5.1
Aluminum and articles thereof.....	76	0.905	120.7	119.5	-2.0	0.1	0.1	-3.2	-1.0
Miscellaneous articles of base metal.....	83	0.329	147.7	147.7	0.5	0.0	0.0	0.4	0.0
<b>Machinery, electrical equipment, TV image and sound recorders, parts, etc.....</b>	XVI	28.820	97.5	97.5	0.3	-0.1	0.1	0.2	0.0
Machinery and mechanical appliances; parts thereof.....	84	17.273	113.5	113.8	1.3	-0.1	-0.1	0.4	0.3
Electrical machinery and equipment and parts and accessories thereof.....	85	11.547	80.1	79.9	-1.2	0.0	0.3	0.0	-0.2
<b>Vehicles, aircraft, vessels and associated transport equipment.....</b>	XVII	14.376	130.4	130.3	0.9	0.0	0.1	0.2	-0.1
Motor vehicles and their parts.....	87	8.970	115.0	114.7	0.1	-0.1	0.0	-0.2	-0.3
<b>Optical, photo, measuring, medical &amp; musical instruments; &amp; timepieces.....</b>	XVIII	6.147	107.4	107.4	0.0	-0.2	0.0	-0.2	0.0
<b>Miscellaneous manufactured articles.....</b>	XX	1.468	110.9	111.3	0.8	-0.4	0.1	0.1	0.4
Furniture; stuffed furnishings; lamps and lighting fittings nesoi;.....	94	0.832	122.7	123.3	1.5	-0.7	0.1	0.2	0.5
Toys, games and sports equipment; parts and accessories thereof.....	95	0.475	89.7	89.8	0.2	0.0	0.0	0.1	0.1

<sup>1</sup> Relative importance figures are based on 2013 trade values.

NOTES: Data may be revised in each of the three months after original publication.

Dash = Not available

**Table 7. U.S. import price indexes and percent changes by locality of origin: February 2014 to February 2015**  
 [2000=100, unless otherwise noted]

Description	Relative importance Jan. 2015 <sup>1</sup>	Index		Percent change				
		Jan. 2015	Feb. 2015	Annual	Monthly			
				Feb. 2014 to Feb. 2015	Oct. 2014 to Nov. 2014	Nov. 2014 to Dec. 2014	Dec. 2014 to Jan. 2015	Jan. 2015 to Feb. 2015
<b>Industrialized Countries<sup>2</sup></b> .....	100.000	122.7	122.5	-8.4	-1.2	-2.0	-2.4	-0.2
Nonmanufactured articles.....	8.561	150.2	157.9	-39.5	-7.5	-16.8	-10.8	5.1
Manufactured articles.....	90.920	120.1	119.4	-3.5	-0.4	-0.2	-1.5	-0.6
<b>Other Countries<sup>3</sup></b> .....	100.000	124.3	125.4	-9.5	-2.1	-2.5	-3.1	0.9
Nonmanufactured articles.....	11.092	204.7	224.6	-34.9	-9.2	-13.3	-16.1	9.7
Manufactured articles.....	88.681	106.8	106.5	-3.4	-0.5	-0.3	-1.2	-0.3
<b>Canada</b> .....	100.000	130.1	130.4	-17.2	-3.2	-5.6	-3.8	0.2
Nonmanufactured articles.....	23.474	144.0	151.5	-40.1	-7.5	-17.3	-10.8	5.2
Manufactured articles.....	75.701	130.4	129.0	-5.0	-1.2	-0.8	-1.4	-1.1
<b>European Union<sup>4</sup></b> .....	100.000	135.2	133.9	-2.7	0.4	-0.4	-1.4	-1.0
Manufactured articles.....	99.236	131.6	130.3	-2.6	0.5	-0.4	-1.3	-1.0
<b>France (Dec. 2003=100)</b> .....	100.000	123.0	122.4	-0.7	-0.1	-0.3	0.2	-0.5
<b>Germany (Dec. 2003=100)</b> .....	100.000	118.2	117.7	-0.5	-0.4	-0.3	0.1	-0.4
<b>United Kingdom (Dec. 2003=100)</b> .....	100.000	120.5	120.8	-6.6	-2.8	0.1	-5.3	0.2
<b>Latin America<sup>5</sup></b> .....	100.000	148.1	149.6	-13.7	-2.6	-3.9	-4.5	1.0
Nonmanufactured articles.....	17.508	212.8	230.9	-36.7	-8.8	-13.6	-17.5	8.5
Manufactured articles.....	82.081	126.2	125.5	-4.7	-0.3	-0.6	-1.3	-0.6
<b>Mexico (Dec. 2003=100)</b> .....	100.000	131.4	131.8	-6.4	-1.2	-2.0	-2.4	0.3
Nonmanufactured articles (Dec. 2008=100).....	9.762	119.3	126.1	-33.5	-7.7	-12.7	-17.2	5.7
Manufactured articles (Dec. 2008=100)...	89.931	91.8	91.6	-1.3	0.0	-0.1	-0.5	-0.2
<b>Pacific Rim (Dec. 2003=100)<sup>6</sup></b> .....	100.000	101.3	101.2	-1.7	-0.2	-0.2	-0.5	-0.1
<b>China (Dec. 2003=100)</b> .....	100.000	103.5	103.3	-0.6	-0.1	0.1	-0.2	-0.2
<b>Japan</b> .....	100.000	97.3	97.1	-1.9	-0.1	-0.5	-0.6	-0.2
<b>Asian NICs<sup>7</sup></b> .....	100.000	87.7	87.7	-2.0	-0.2	-0.3	-0.7	0.0
<b>ASEAN (Dec. 2003=100)<sup>8</sup></b> .....	100.000	100.4	100.1	-4.0	-0.5	-0.2	-1.1	-0.3
<b>Asia Near East (Dec. 2003=100)<sup>9</sup></b> .....	100.000	180.1	194.4	-26.6	-6.7	-11.7	-10.4	7.9

<sup>1</sup> Relative importance figures are based on 2013 trade values.

<sup>2</sup> Western Europe, Canada, Japan, Australia, New Zealand and South Africa.

<sup>3</sup> Eastern Europe, Latin America, OPEC countries, and other countries in Asia, Africa and the Western Hemisphere.

<sup>4</sup> European Union countries.

<sup>5</sup> Mexico, Central America, South America and the Caribbean.

<sup>6</sup> China, Japan, Australia, Brunei, Indonesia, Macao, Malaysia, New Zealand, Papua New Guinea, Philippines and the Asian Newly Industrialized Countries.

<sup>7</sup> Asian Newly Industrialized Countries - Hong Kong, Singapore, South Korea and Taiwan.

<sup>8</sup> Association of Southeast Asian Nations - Brunei, Cambodia, Indonesia, Laos, Malaysia, Myanmar, Philippines, Singapore, Thailand and Vietnam.

<sup>9</sup> Bahrain, Iran, Iraq, Israel, Jordan, Kuwait, Lebanon, Oman, Qatar, Saudi Arabia, Syria, United Arab Emirates and Yemen.

NOTES: Data may be revised in each of the three months after original publication.

Regions are not mutually exclusive.

Dash = Not available

**Table 8. U.S. international price indexes and percent changes for selected transportation services: February 2014 to February 2015**

[2000=100, unless otherwise noted]

Description	Relative importance Jan. 2015 <sup>1</sup>	Index		Percent change				
		Jan. 2015	Feb. 2015	Annual	Monthly			
				Feb. 2014 to Feb. 2015	Oct. 2014 to Nov. 2014	Nov. 2014 to Dec. 2014	Dec. 2014 to Jan. 2015	Jan. 2015 to Feb. 2015
<b>Air Freight</b>								
<b>Import Air Freight</b> .....	100.000	168.1	164.4	-6.7	-1.3	-1.7	0.6	-2.2
Europe (Dec. 2003=100).....	26.746	162.1	153.9	-15.3	-1.4	-2.3	-2.7	-5.1
Asia.....	67.931	148.2	146.4	-3.4	-1.4	-1.6	2.0	-1.2
<b>Export Air Freight</b> .....	100.000	160.4	157.6	4.2	-0.2	-1.6	2.9	-1.7
Europe (Dec. 2006=100).....	35.300	147.4	144.9	6.6	-0.1	-1.3	4.5	-1.7
<b>Inbound Air Freight</b> .....	100.000	160.7	158.3	-2.9	-0.7	-1.9	1.3	-1.5
Europe (Dec. 2003=100).....	26.469	148.3	142.8	-10.6	-1.4	-2.0	-1.3	-3.7
Asia.....	60.465	145.6	144.5	0.1	-0.7	-2.1	2.5	-0.8
<b>Outbound Air Freight</b> .....	100.000	151.4	150.8	1.9	-0.1	-0.3	-0.6	-0.4
Europe (Dec. 2003=100).....	32.968	170.6	170.5	2.8	0.0	0.0	-0.9	-0.1
Asia.....	43.901	142.5	141.4	0.6	-0.2	-0.6	-0.9	-0.8
<b>Air Passenger Fares</b>								
<b>Import Air Passenger Fares</b> .....	100.000	201.1	196.0	-0.6	1.0	7.9	-6.8	-2.5
Europe.....	47.752	235.4	241.8	8.1	2.8	0.8	3.1	2.7
Asia.....	24.135	147.5	138.3	-9.7	-0.9	16.2	-14.4	-6.2
Latin America/Caribbean.....	9.612	165.3	166.0	0.2	-1.6	10.6	-11.2	0.4
<b>Export Air Passenger Fares</b> .....	100.000	189.2	162.2	-5.9	-5.0	8.3	0.4	-14.3
Europe.....	26.702	213.4	209.8	-0.2	-6.4	4.2	-5.4	-1.7
Asia.....	28.363	167.2	137.3	-4.3	0.8	7.2	2.5	-17.9
Latin America/Caribbean.....	23.267	198.3	177.8	-10.8	-1.9	10.6	-0.8	-10.3

<sup>1</sup> Relative importance figures are based on 2013 trade values.

NOTES: Data may be revised in each of the three months after original publication.

Dash = Not available

## TECHNICAL NOTE

**Import and Export Merchandise and Services Price Indexes** -- All indexes use a modified Laspeyres formula and are not seasonally adjusted. Price indexes are reweighted annually, with a two-year lag in the weights. Published series use a base year of 2000=100 where possible. More detailed index series and additional information may be obtained at <http://www.bls.gov/mxp>, or by calling (202) 691-7101.

**Merchandise Goods Classification Systems** -- The merchandise price indexes are published using three classification systems. Items are classified by end use according to the Bureau of Economic Analysis Classification System, by industry according to the North American Industry Classification System (NAICS), and by product category according to the Harmonized System (HS). While classification by end use and product category are self-explanatory, some notes are in order for classifying items by industry. In the NAICS imports and exports tables, items are classified by output industry, not input industry. As an example, NAICS import index 326 (plastics and rubber products manufacturing) include outputs such as manufactured plastic rather than inputs such as petroleum. The NAICS classification structure also matches the classification system used by the PPI (Producer Price Index) to produce the NAICS primary products indexes.

**Import Price Indexes** -- Products have been classified by the Harmonized Tariff Schedule of the United States Annotated (TSUSA). Import prices are based on U.S. dollar prices paid by the U.S. importer. The prices are generally either "free on board" (f.o.b.) foreign port or "cost, insurance, and freight" (c.i.f.) U.S. port transaction prices, depending on the practices of the individual industry. The index for crude petroleum is calculated from data collected by the U.S. Department of Energy.

**Export Price Indexes** -- Products have been classified by the Harmonized Schedule B classification system of the U.S. Bureau of the Census. The prices used are generally either "free alongside ship" (f.a.s.) factory or "free on board" (f.o.b.) transaction prices, depending on the practices of the individual industry. Prices used in the grain index, excluding rice, are obtained from the U.S. Department of Agriculture.

**Services Price Indexes** -- Starting in September 2008 the Import Air Passenger Fares Indexes represent changes in the average revenue per passenger received by foreign carriers from U.S. residents and are calculated from data obtained from an airline consulting service. These data include tickets sold by travel agencies and travel websites. Tickets sold directly by the airlines are excluded, as are frequent flyer tickets generally. Starting in January 2008 the Export Air Passenger Fares Indexes represent changes in the average revenue per passenger received by U.S. carriers from foreign residents and are calculated from data collected directly from airlines. These data include frequent flyer tickets and those sold by consolidators. Taxes and fees are included in the Import Air Passenger Fares Index and excluded from the Export Air Passenger Fares Index. The Air Freight Indexes are calculated from data collected directly from airlines. These data exclude mail and passenger baggage. The scope of the service being priced is the movement of freight from airport to airport only, and does not include any ground transportation or port service. The Air Freight Indexes are presented using two definitions: Balance of Payments (which represent transactions between U.S. and foreign residents) and International (which represent transactions inbound to and outbound from the U.S.). Fact sheets specifying detailed information for each services industry are available at <http://www.bls.gov/mxp> under "MXP Publications."

**Import Indexes by Locality of Origin** -- Prices used in these indexes are a subset of the data collected for the Import Price Indexes. Beginning with January 2002, the indexes are defined by locality of origin using a nomenclature based upon the North American Industry Classification System (NAICS). Nonmanufactured goods are defined as NAICS 11 and 21 and manufactured goods are defined as NAICS 31-33.

**Revision Policy** -- To reflect the availability of late reports and corrections by respondents, monthly data may be revised in each of the three months after original publication. After three months, no further data revisions take place. So, for example, data released in the January release will be subject to revision in the releases for February, March, and April.

**Uses of the Data** -- The primary use of the indexes is to deflate trade statistics, notably the foreign trade sector of the National Income and Product Accounts constructed by the Department of Commerce. Other published indexes are useful for general market analysis. For trade in international services, Balance of Payments indexes are used for deflating National Income and Product Accounts, while International indexes are more appropriate for market analysis. Merchandise and services indexes also can be used to study U.S. competitiveness and to compute price elasticities, and the merchandise import indexes by country or region of origin are useful in terms of trade analysis.

**E-Mail Subscription** -- The U.S. Import and Export Price Indexes news release is available through an e-mail subscription service at (<http://www.bls.gov/bls/list.htm>).

**Additional Information** -- More detailed data are available on the Import/Export Price Indexes home page at (<http://www.bls.gov/mxp>). For technical assistance in using the BLS Internet site, send e-mail to ([labstat.helpdesk@bls.gov](mailto:labstat.helpdesk@bls.gov)). For Import/Export Price Index data requests, send e-mail to ([mxpinfo@bls.gov](mailto:mxpinfo@bls.gov)).

Information from this release will be made available to sensory impaired individuals upon request. Voice phone: 202-691-5200; Federal Relay Service: 1-800-877-8339.