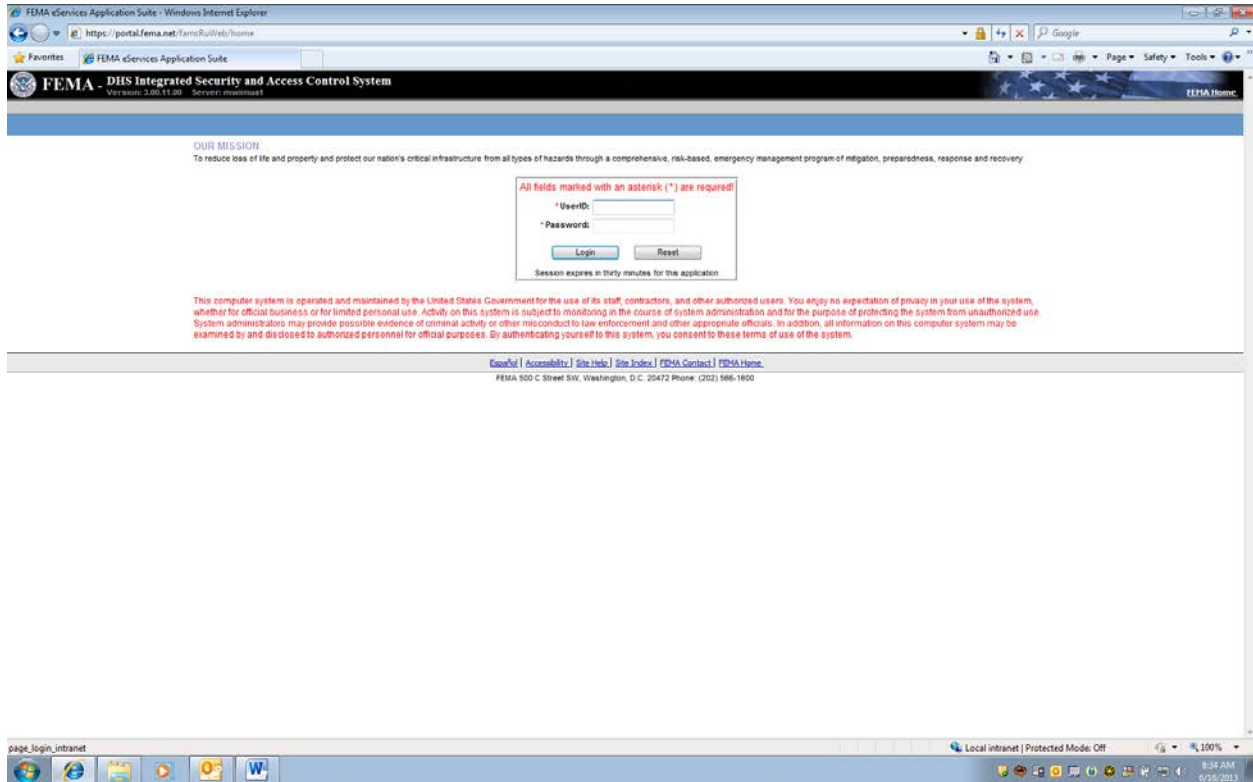
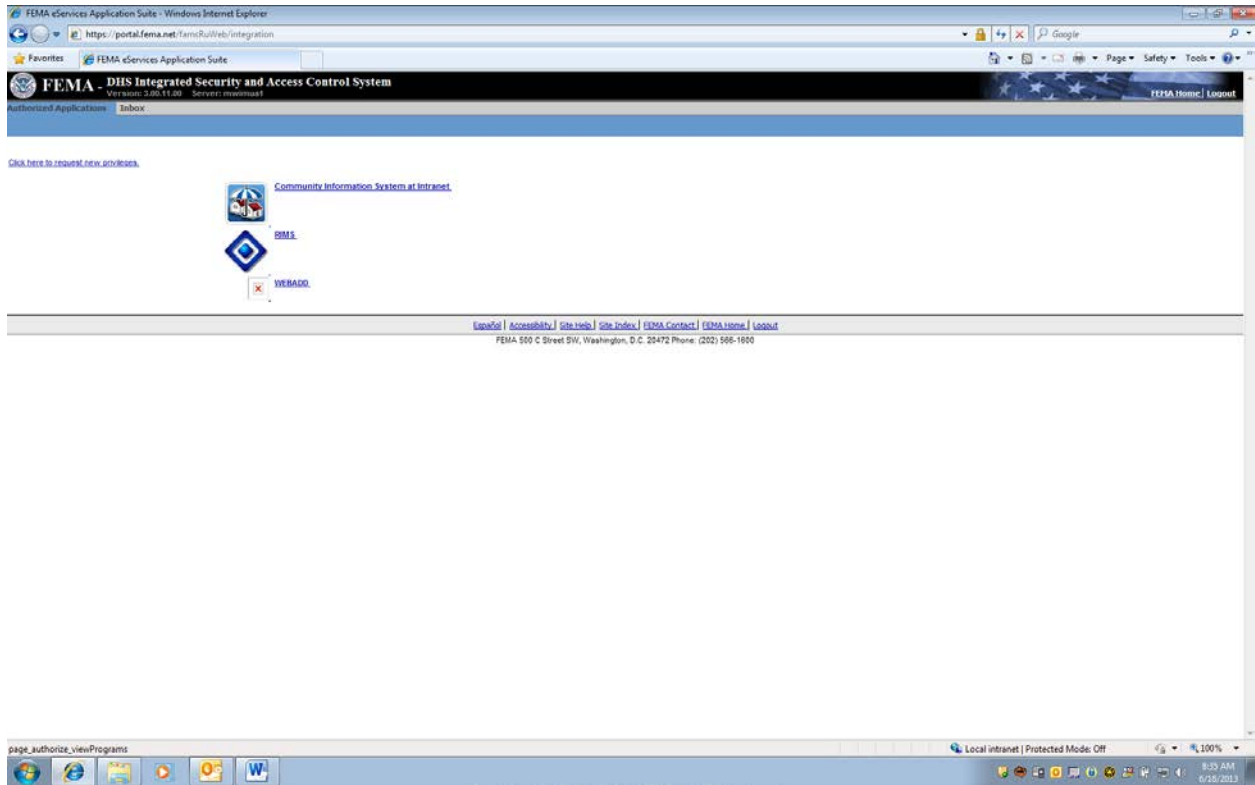


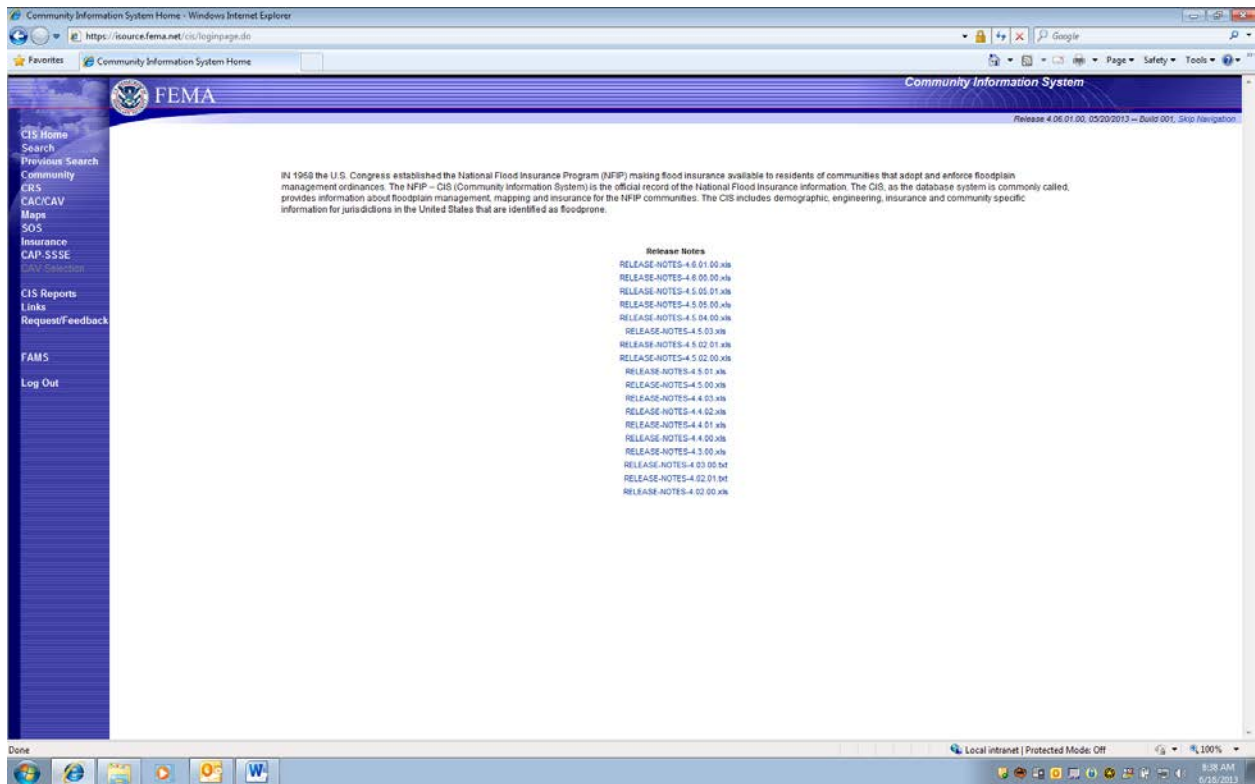
Community Assistance Visit (CAV) Community Visit Report Screens in the NFIP Community Information System (CIS)



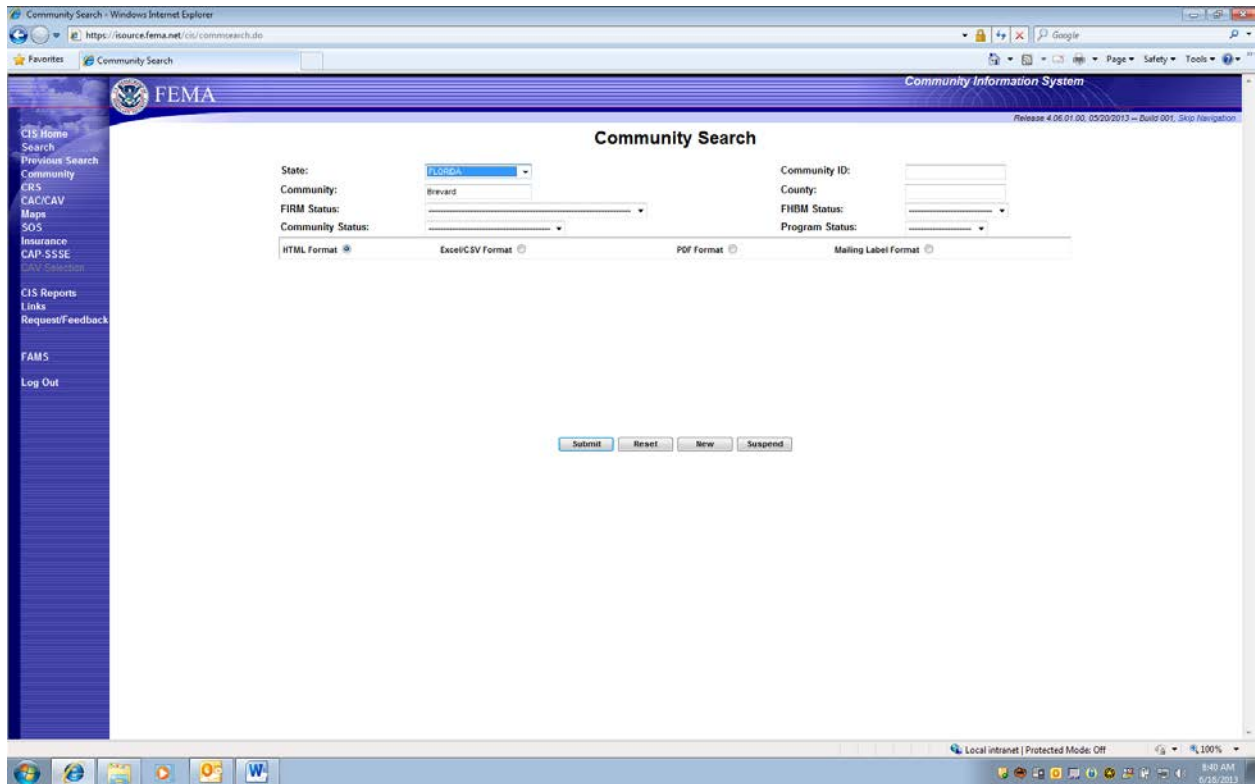
Account and Password must be requested from NFIP CIS Administrator where Read, Add, Edit Rights provided based on Need.



Select Community Information System



Select Search on Left to Navigate to Community and State

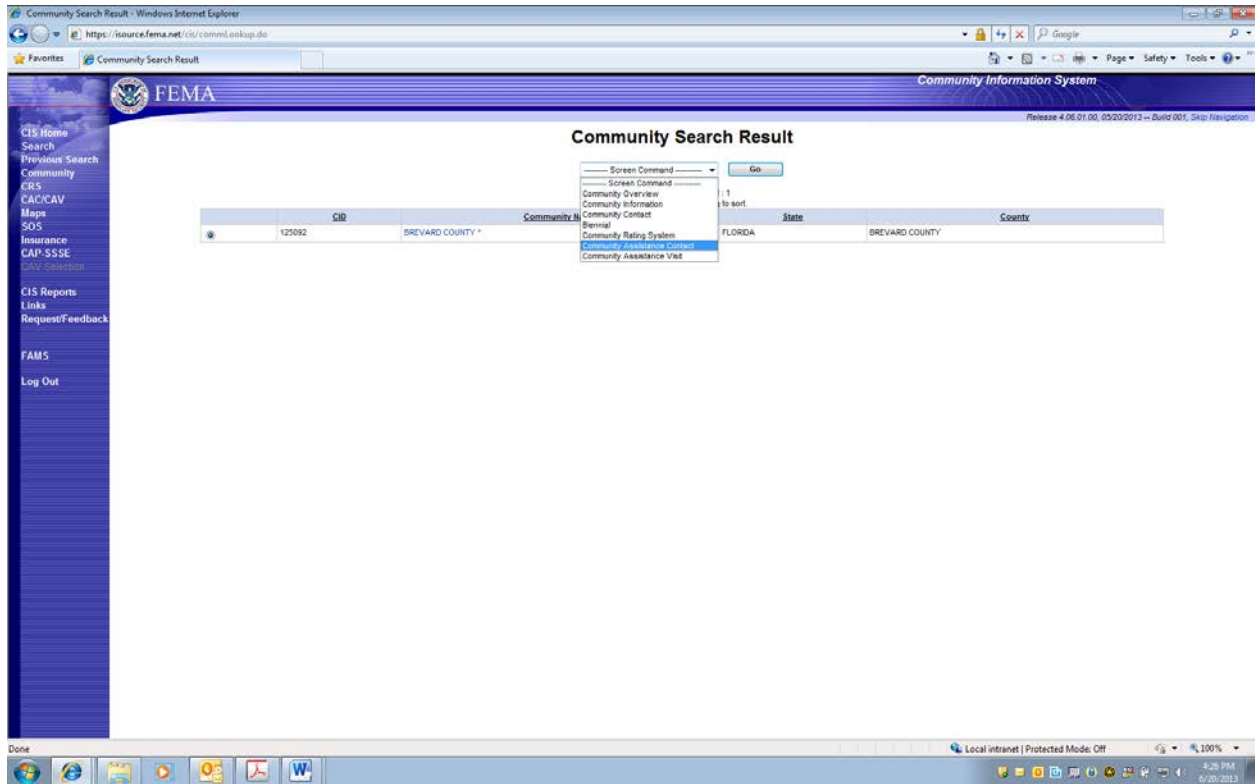


Type "Brevard", then chose Florida from State Pick List, and Enter "Submit"

The screenshot shows a web browser window displaying the FEMA Community Information System. The page title is "Community Search Result". A search bar at the top contains "Screen Command" and a "Go" button. Below the search bar, it states "Total communities found: 1" and "Click on the column heading to sort". A table with the following columns is displayed: "CIR", "Community Name", "State", and "County". The table contains one row with the following data: "125092", "BREVARD COUNTY *", "FLORIDA", and "BREVARD COUNTY". The left sidebar contains a navigation menu with items such as "CIS Home", "Search", "Previous Search", "Community", "CRS", "CAC/CAV", "Maps", "SOS", "Insurance", "CAP-SSSE", "CAV Selection", "CIS Reports", "Links", "Request/Feedback", "FAMS", and "Log Out". The bottom status bar shows "Local intranet | Protected Mode: Off" and the date/time "8:41 AM 6/18/2013".

CIR	Community Name	State	County
125092	BREVARD COUNTY *	FLORIDA	BREVARD COUNTY

Only one NFIP Participating community called "Brevard" is returned. Double-click on community name.



Selected Community Assistance Contact from Upper Box screen choices, and pressed "GO" button.

CAC is selected

The screenshot shows the FEMA Community Information System (CIS) interface. The main heading is "CAC Summary". The page displays the following information:

Community: BREVARD COUNTY *
State: FLORIDA
County: BREVARD COUNTY
CID: 125062

Date of CAC	Agency	Conducted by	Reviewed by	Closed	Updated by	Last Updated
10/01/2008	FEMA	Ed Robinson			erobns1	10/02/2008 06:07:12pm

Below the table are four buttons: Detail, New, Delete, and Report.

This screen reflects PRA collection Entry Information for 1660-0023, Community Assistance Contact.

Four Choices (Gray Boxes):

DETAIL: Loads Previous CAC Information

NEW: Adds new CAC collection information.

DELETE: Allows an option to delete a previous entry.

REPORT: This option Prints a report for all CAC entry fields.

CAC Info View

Community: BREVARD COUNTY * State: FLORIDA
 County: BREVARD COUNTY CID: 125992
 Date of CAC: 10/01/2008

Date of CAC: 10/01/2008
 Agency Conducting CAC: FEMA
 Type of CAC: VISIT
 CAC Conducted by: Ed Robinson
 CAC Reviewed by:
 Referred CAC to FEMA:
 Date CAC Closed:
 CAC Needed: CAV Needed:
 Date CAC/CAV Needed:
 FY:
 Updated By: erobtn1
 Last Updated: 10/02/2008 08:07:12pm

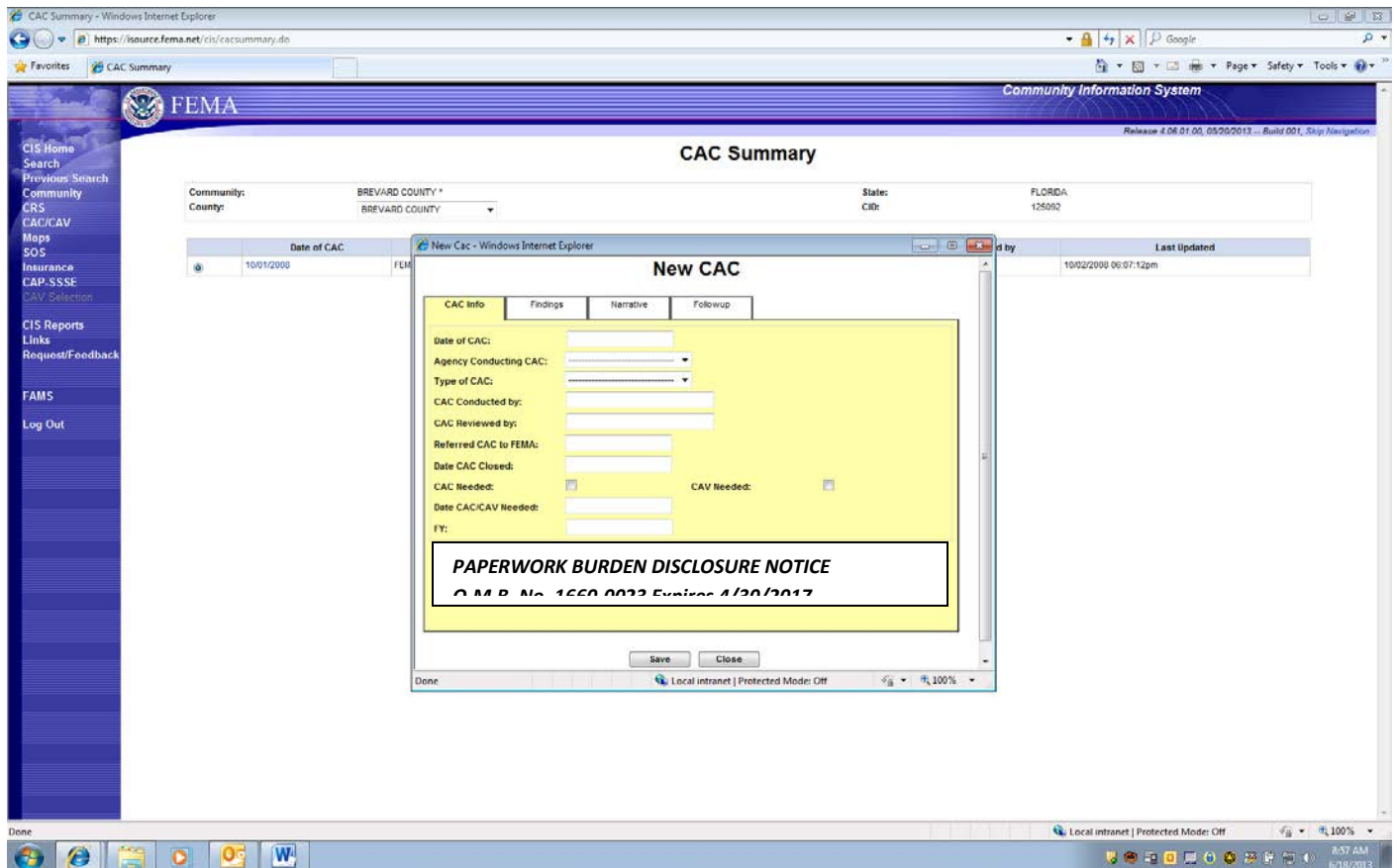
PAPERWORK BURDEN DISCLOSURE NOTICE *O.M.B. No. 1660-0023, Expires 4/30/2017*

Public reporting burden for this data collection is estimated to average 1 hour per response. The burden estimate includes the time for reviewing instructions, searching existing data sources, gathering and maintaining the data needed, and completing and submitting this form. This collection of information is required to obtain or retain benefits. You are not required to respond to this collection of information unless it displays a valid OMB control number. Send comments regarding the accuracy of the burden estimate and any suggestions for reducing the burden to: Information Collections Management, Department of Homeland Security, Federal Emergency Management Agency, 500 C Street, SW, Washington, DC 20472, Paperwork Reduction Project (1660-0023)

FEMA Form 086-0-29(E), Community Contact Report

DETAIL: Loads Previous entered CAC Information Collection

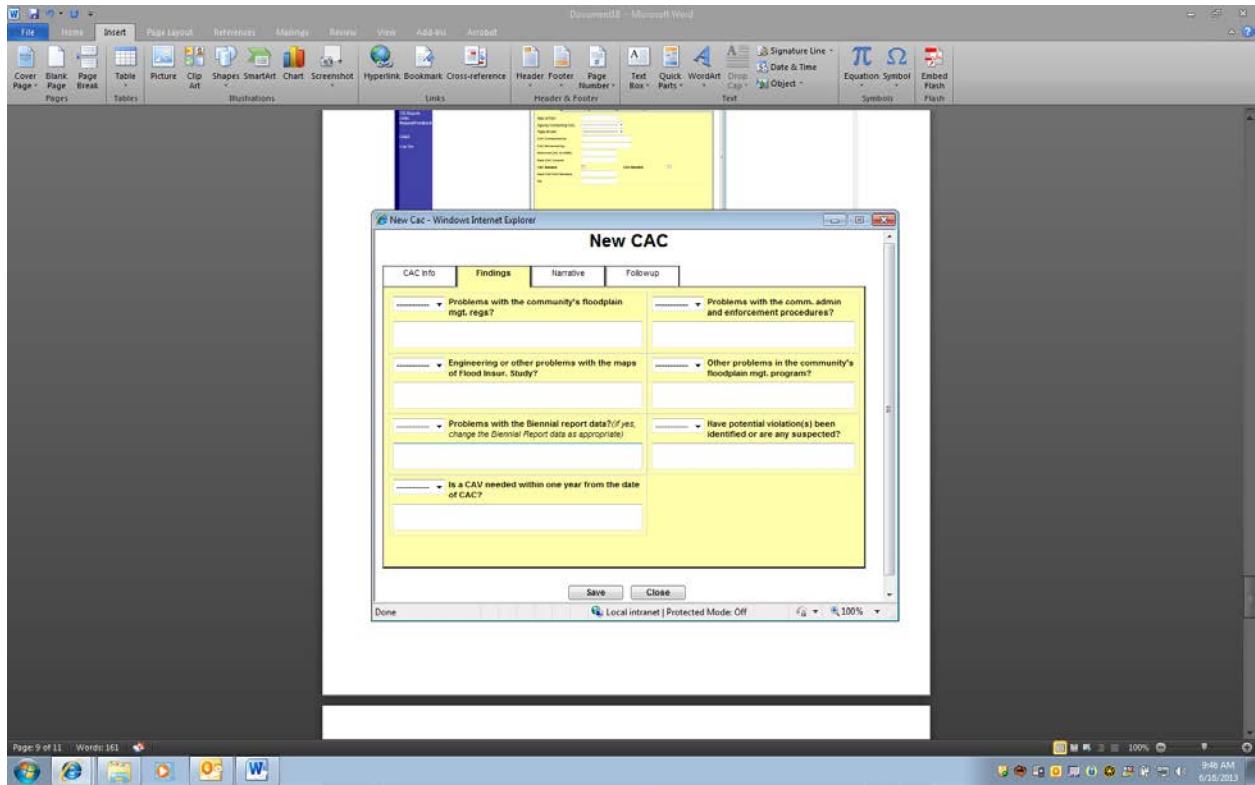
NOTE: The following Notice will appear on this screen since it is the first place a region or state may “edit” a previously entered collection.



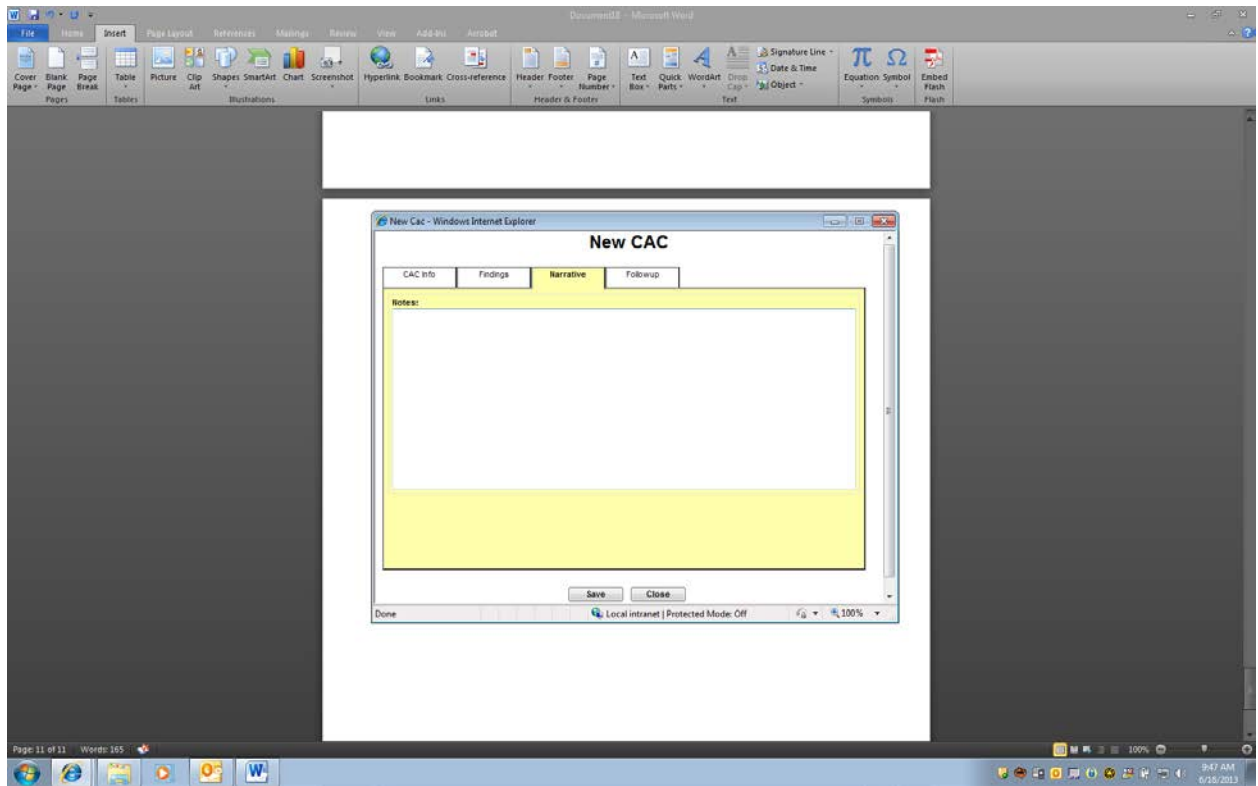
NOTE: Full PRA Notice will appear on this screen since it is the first place a region or state may “Enter” collection information.

NEW is selected to enter a new Community Assistance Contact (CAC).

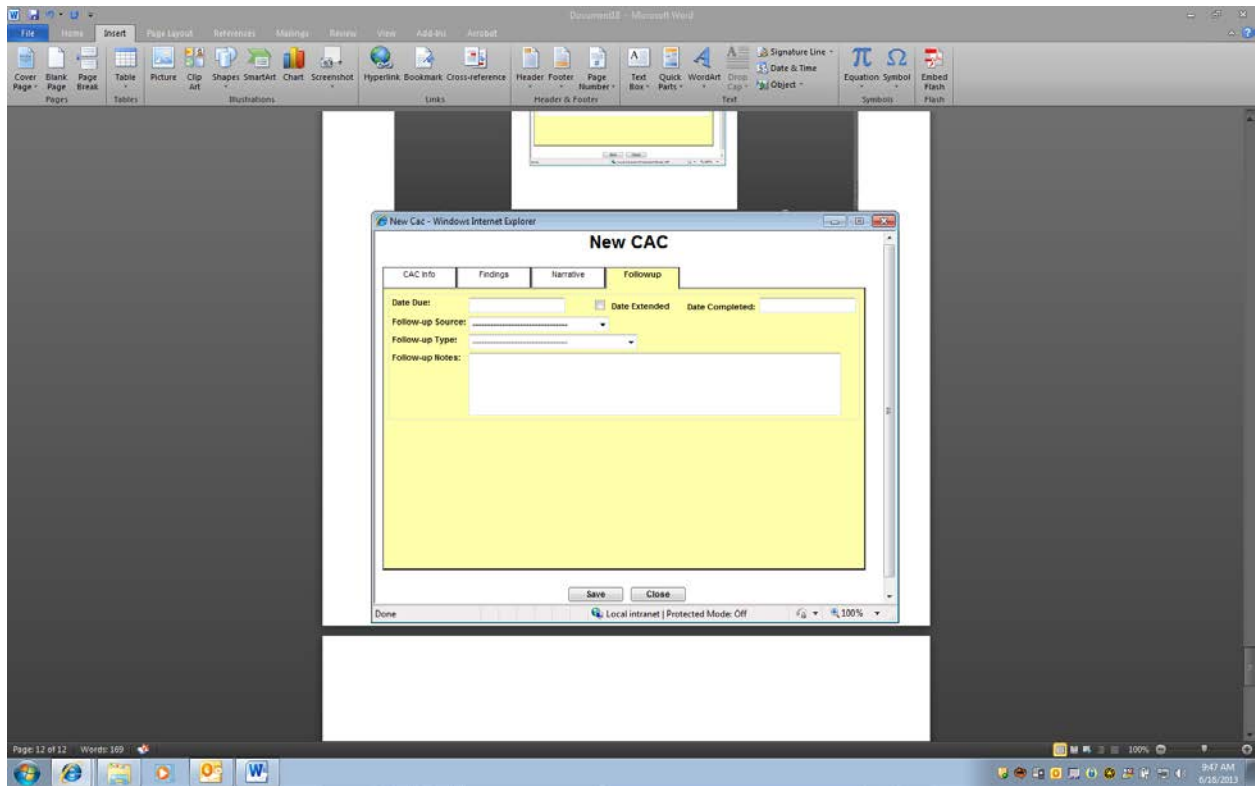
Information can be added under each of four categories: CAC Info; Findings; Narrative; and Follow-up.



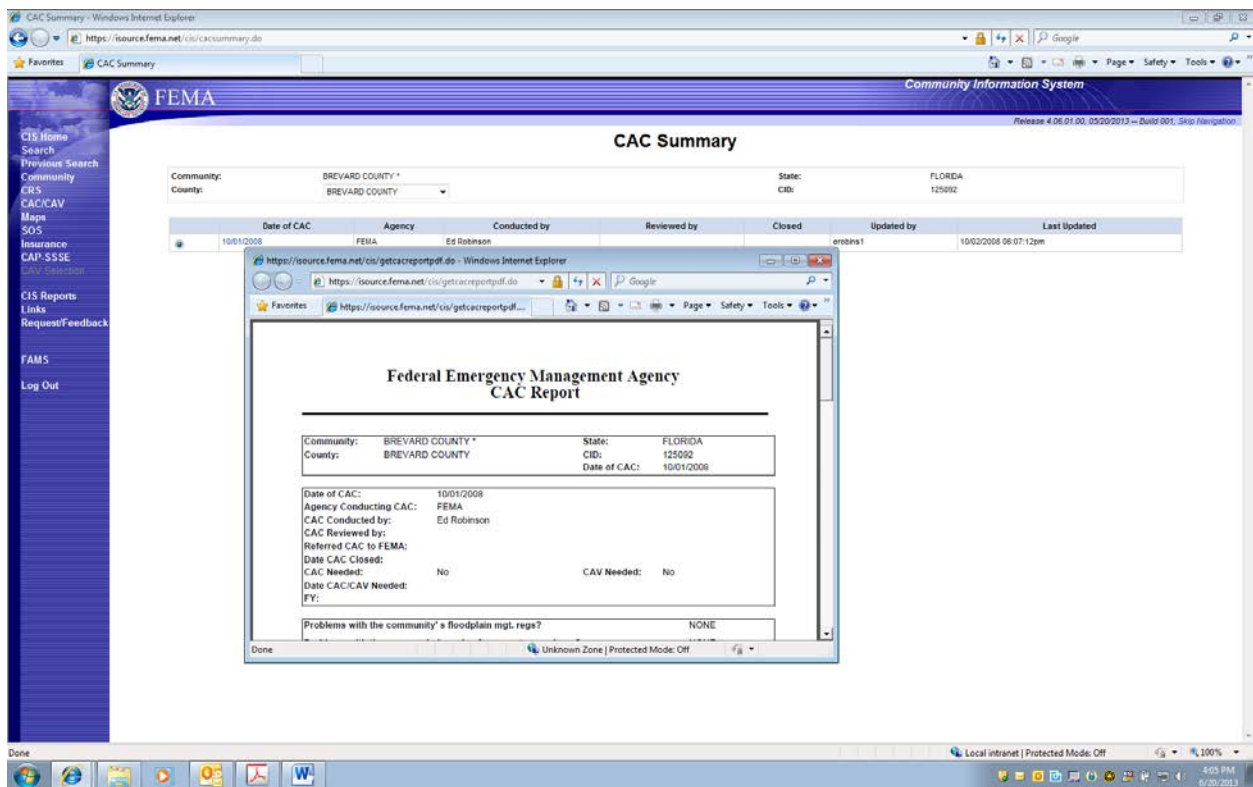
Entry Screen for CAC FINDINGS



Entry Screen for CAC NARRATIVE



Entry Screen for CAC FOLLOW-UP.



CAC Summary Screen offers Option to print full collection Information.

NOTE: The Full PRA Notice will appear on printed report pages.

PAPERWORK BURDEN DISCLOSURE NOTICE

Public reporting burden for this data collection is estimated to average 1 hour per response. The burden estimate includes the time for reviewing instructions, searching existing data sources, gathering and maintaining the data needed, and completing and submitting this form. This collection of information is required to obtain or retain benefits. You are not required to respond to this collection of information unless it displays a valid OMB control number. Send comments regarding the accuracy of the burden estimate and any suggestions for reducing the burden to: Information Collections Management, Department of Homeland Security, Federal Emergency Management Agency, 500 C Street, SW, Washington, DC 20472, Paperwork Reduction Project (1660-0023)

FEMA Form 086-0-29(E), Community Contact Report
O.M.B. No. 1660-0023 Expires 4/30/2017