



# Agricultural Prices

ISSN: 1937-4216

Released January 29, 2016, by the National Agricultural Statistics Service (NASS), Agricultural Statistics Board, United States Department of Agriculture (USDA).

## Special Note

USDA's National Agricultural Statistics Service is updating the rounding for the Prices Received and Prices Paid 2011=100 Index series beginning with the February 2016 *Agricultural Prices* report.

[http://www.nass.usda.gov/Surveys/Guide\\_to\\_NASS\\_Surveys/Prices/updateFeb2016.pdf](http://www.nass.usda.gov/Surveys/Guide_to_NASS_Surveys/Prices/updateFeb2016.pdf)

## December Farm Prices Received Index Decreased 2.2 Percent

The December Prices Received Index (Agricultural Production), at 90, decreased 2.2 percent from November. At 84, the Crop Production Index increased 2.4 percent. At 97, the Livestock Production Index decreased 7.6 percent. Producers received lower prices for market eggs, cattle, milk, and calves but higher prices for broilers, grapes, corn, and celery. In addition to prices, the indexes are influenced by the monthly mix of commodities producers market. Increased monthly movement of oranges, milk, broilers, and wheat offset the decreased marketing of corn, grapes, soybeans, and calves.

The Prices Received Index is down 11 percent from the previous year. The Food Commodities Index, at 97, decreased 4.0 percent from the previous month and is down 16 percent from December 2014.

## December Prices Paid Index Down 1.9 Percent

The December Index of Prices Paid for Commodities and Services, Interest, Taxes, and Farm Wage Rates (PPITW), at 104, is down 1.9 percent from November and 6.3 percent below December 2014. Lower prices in December for feeder cattle, concentrates, complete feeds, and diesel offset higher prices for nitrogen, feeder pigs, feed grains, and hay & forages.

## Prices Received, Prices Paid, and Ratio of Prices Received to Prices Paid Indexes 2011 Base – United States: December 2015 with Comparisons

Index Group	December 2014	November 2015	December 2015
Prices received by farmers .....	101	92	90
Prices paid by farmers .....	111	106	104
Ratio of prices received to prices paid .....	91	87	87

## Contents

Prices Received by Farmers .....	4
Prices Received Indexes, 2011 Base – United States: December 2015 with Comparisons .....	5
Prices Received Indexes, 1910-1914 Base – United States: December 2015 with Comparisons .....	5
Prices Received Indexes, 2011 Base by Month for Selected Groups – United States: 2014 and 2015 .....	5
Prices Paid Indexes, 2011 Base by Month for Selected Groups – United States: 2014 and 2015 .....	6
Received and Paid Indexes, Annual Average – United States: 2011=100 Chart .....	6
Crop Farm Received and Paid Indexes, All Items by Quarter – United States: 2011=100 Chart .....	7
Livestock Farm Received and Paid Indexes All Items by Quarter – United States: 2011=100 Chart .....	7
Received Indexes by Month, Agricultural, Crop, and Livestock Production – United States: 2011=100 Chart .....	8
Received Indexes by Month, Feed Grain, Food Grain, and Oilseed – United States: 2011=100 Chart .....	8
Received Indexes by Month, Fruit & Tree Nut and Vegetable & Melon – United States: 2011=100 Chart .....	9
Received Indexes by Month, Dairy, Meat Animal, and Poultry & Egg – United States: 2011=100 Chart .....	9
Prices Received for Field Crops and Fruits – United States: December 2015 with Comparisons .....	10
Prices Received for Vegetables and Livestock – United States: December 2015 with Comparisons .....	11
Prices Received for Corn by Month – United States Chart .....	12
Prices Received for Wheat by Month – United States Chart .....	12
Prices Received for Upland Cotton by Month – United States Chart .....	13
Prices Received for Soybeans by Month – United States Chart .....	13
Prices Received for Cattle by Month – United States Chart .....	14
Prices Received for Milk by Month – United States Chart .....	14
Prices Received for Hogs by Month – United States Chart .....	15
Prices Received for Poultry by Month – United States Chart .....	15
Prices Received for All Wheat, Corn, and Soybeans by Month – United States: 2015 with Comparisons .....	16
Prices Received for Beef Cattle and All Hogs by Month – United States: 2015 with Comparisons .....	16
Prices Received for All Wheat – States and United States: December 2015 with Comparisons .....	17
Prices Received for Winter Wheat – States and United States: December 2015 with Comparisons .....	17
Prices Received for Durum Wheat – States and United States: December 2015 with Comparisons .....	18
Prices Received for Spring Wheat – States and United States: December 2015 with Comparisons .....	18
Prices Received for Oats – States and United States: December 2015 with Comparisons .....	18
Prices Received for All Barley – States and United States: December 2015 with Comparisons .....	19
Prices Received for Malting Barley – States and United States: December 2015 with Comparisons .....	19
Prices Received for Feed Barley – States and United States: December 2015 with Comparisons .....	19
Prices Received for Sorghum Grain – States and United States: December 2015 with Comparisons .....	19
Prices Received for Corn – States and United States: December 2015 with Comparisons .....	20
Prices Received for Soybeans – States and United States: December 2015 with Comparisons .....	20
Prices Received for Dry Beans – States and United States: December 2015 with Comparisons .....	21
Prices Received for Peanuts (in shell) – States and United States: December 2015 with Comparisons .....	21
Prices Received for Sunflower – States and United States: December 2015 with Comparisons .....	21
Prices Received for Canola – States and United States: December 2015 with Comparisons .....	21
Prices Received for Flaxseed – States and United States: December 2015 with Comparisons .....	22
Prices Received for Upland Cotton and Cottonseed – States and United States: December 2015 with Comparisons .....	22
Prices Received and Farm Marketings for Upland Cotton and Rice – United States: December 2015 with Comparisons .....	22
Prices Received for Hay by Type – States and United States: December 2015 with Comparisons .....	23
Prices Received for Apples – States and United States: December 2015 with Comparisons .....	23
Prices Received for Citrus Fruits by Utilization – States and United States: December 2014 .....	24
Prices Received for Citrus Fruits by Utilization – States and United States: November 2015 .....	25
Prices Received for Citrus Fruits by Utilization – States and United States: December 2015 .....	26
Prices Received for Potatoes – States and United States: December 2015 with Comparisons .....	27
Prices Received for All Milk – States and United States: December 2015 with Comparisons .....	28
Prices Received for Milk Cows – States and United States: January 2016 with Comparisons .....	28
Parity Price Overview .....	29

Commodity Parity Prices and Price as Percent of Parity Price – United States: December 2015 with Comparisons .....	30
Commodity Parity Prices – United States: December 2015 with Comparisons .....	31
Commodity Parity Prices – United States: December 2015 with Comparisons (continued).....	32
Marketing Year for Specified Commodities .....	33
Sweet Potato Market Year Average Prices Received – States and United States: Marketing Years 2013 - 2015 .....	33
Rice Market Year Average Prices Received by All and Length of Grain – States and United States: Marketing Years 2012 through 2014 .....	33
All Rice Prices Received and Farm Marketings – United States: Marketing Years 2013-2014 through 2015-2016 .....	34
Long Grain Rice Prices Received and Farm Marketings – United States: Marketing Years 2013-2014 through 2015-2016 .....	34
Medium and Short Grain Rice Prices Received and Farm Marketings – United States: Marketing Years 2013-2014 through 2015-2016 .....	35
Medium and Short Grain Rice Prices Received – California and Other States: Marketing Years 2014-2015 through 2015-2016 .....	35
Prices Received Indexes as a Percent of 2011 Base, Monthly and Annual Average – United States: 2011-2015 .....	36
Prices Received Indexes as a Percent of 1910-1914 Base, Monthly and Annual Average – United States: 2011-2015 .....	38
Reliability of Prices Received Estimates .....	39
Prices Paid by Farmers.....	40
Prices Paid Indexes and Related Parity Ratios – United States: December 2015 with Comparisons.....	41
Prices Paid Indexes and Annual Weights for Input Components and Sub-components – United States: December 2015 with Comparisons.....	42
Paid Indexes by Month, All Items and Production Items – United States: 2011=100 Chart.....	43
Paid Indexes, Annual Averages, Production Items, Interest, Taxes, and Wages – United States: 2011=100 Chart .....	43
Paid Indexes by Farm Type and Month, All Items – United States: 2011=100 Chart.....	44
Paid Indexes by Origin and Month, All Production Items – United States: 2011=100 Chart .....	44
Paid Indexes by Non-Farm Origin and Month, Chemicals, Fertilizer, and Fuels – United States: 2011=100 Chart .....	45
Paid Indexes by Non-Farm Origin and Month, Machinery and Supplies & Repairs – United States: 2011=100 Chart .....	45
Paid Indexes by Farm Origin and Month, Feed and Livestock & Poultry – United States: 2011=100 Chart .....	46
Feed Price Ratios – United States: December 2015 with Comparisons .....	46
Prices Received Used to Calculate Feed Price Ratios – United States: December 2015 with Comparisons.....	47
Prices Paid for Feeder Livestock – United States: December 2015 with Comparisons.....	47
Annual Average Prices Paid for Feeder Livestock and Poultry – United States: 2010-2015 .....	47
Annual Averages for Feed and Livestock & Poultry Indexes – United States: 2011-2015 .....	47
Grazing Fee Rates for Cattle – States, Regions, and United States: 2014 and 2015 .....	48
Prices Paid Indexes as a Percent of 2011 Base, Monthly and Annual Average – United States: 2011-2015.....	49
Prices Paid Index Sub-Components as a Percent of 2011 Base, Monthly and Annual Average – United States: 2011-2015 .....	52
Prices Paid Indexes as a Percent of 1910-1914 Base, Monthly and Annual Average – United States: 2011-2015 .....	56
Feed Ratios Monthly and Annual Average – United States: 2011 - 2015 .....	59
Reliability of Prices Paid Estimates .....	60
Information Contacts .....	61

## December Prices Received by Farmers

The December Prices Received Index for agricultural production is 90 percent of its 2011 base, down 2.2 percent from the November index and 11 percent below the December 2014 index.

**Crop Production:** The December index, at 84, increased 2.4 percent from November and is 1.2 percent above December 2014. Index increases for oilseed & grain, vegetable & melon, and other crop production more than offset the index decrease for fruit & tree nut production.

**Grain and oilseed:** The December index, at 66, is 1.5 percent higher than November but is 8.3 percent lower than December 2014. Higher feed grain index and oilseed indexes more than offset the lower food grain index.

**Feed grain:** The December index, at 62, is up 3.3 percent from November but is 3.1 percent below a year ago. The corn price, at \$3.65 per bushel, is up 5 cents from last month but is down 14 cents from December 2014. At \$5.76 per cwt, sorghum grain is 7 cents below November and \$1.57 lower than December a year earlier.

**Food grain:** At 71, the index for December is 2.7 percent lower than the previous month and is 18 percent below a year earlier. The December price for all wheat, at \$4.71 per bushel, is down 15 cents from November and is \$1.43 below December 2014.

**Oilseed:** At 70, the index for December is up 1.4 percent from November but 15 percent lower than December 2014. The soybean price, at \$8.76 per bushel, increased 8 cents from November but is \$1.54 below December a year earlier.

**Fruit and tree nut:** The December index, at 133, is down 3.6 percent from November but 8.1 percent higher than a year earlier. Price decreases during December for oranges more than offset price increases for grapes and apples.

**Vegetable and melon:** At 135, the index for December is up 6.3 percent from November and 41 percent above December 2014. Price increases during December for celery and cauliflower more than offset the lower price for lettuce.

**Other crop:** The December index, at 81, is up 1.3 percent from November but is 2.4 percent below December 2014. The all hay price, at \$142 per ton, is unchanged from November but \$14.00 lower than December 2014. At 59.9 cents per pound, the price for upland cotton is up 0.8 cents from November but is 0.9 cents below December 2014.

**Livestock Production:** The index for December, at 97, is down 7.6 percent from November and 24 percent lower than December a year earlier. Compared with a year ago, prices for cattle, hogs, broilers, milk, market eggs, and calves are down but prices are higher for turkeys.

**Meat animal:** At 96, the December index is down 7.7 percent from November and 28 percent lower than a year earlier. At \$42.80 per cwt, the December hog price is down \$3.10 from November and \$21.50 lower than a year earlier. The December beef cattle price of \$122 per cwt is down \$7.00 from the previous month and \$42.00 lower than December 2014.

**Dairy:** The index for December, at 86, is down 5.5 percent from November and 15 percent lower than December a year earlier. The December all milk price of \$17.20 per cwt is down \$1.00 from November and \$3.20 less than December 2014.

**Poultry and egg:** At 111, the December index is down 9.8 percent from November and 19 percent below December 2014. The December market egg price, at \$1.04 per dozen, decreased 89.0 cents from November and is 62.0 cents below December 2014. The December broiler price, at 47.0 cents per pound, is up 5.0 cents from November but 11.0 cents less than a year earlier. At 88.6 cents per pound, the December turkey price is down 3.6 cents from November but is up 15.2 cents from December 2014.

## Prices Received Indexes, 2011 Base – United States: December 2015 with Comparisons

[Revised historical price indexes for months not shown are available at [www.nass.usda.gov](http://www.nass.usda.gov)]

Index Group	2011 Base		
	December 2014	November 2015	December 2015
	(percent)	(percent)	(percent)
Agricultural Production .....	101	92	90
Crop Production .....	83	82	84
Grain and oilseed .....	72	65	66
Feed grain .....	64	60	62
Food grain .....	87	73	71
Oilseed .....	82	69	70
Fruit and tree nut .....	123	138	133
Vegetable and melon .....	96	127	135
Other crop .....	83	80	81
Livestock Production .....	127	105	97
Meat animal .....	134	104	96
Cattle .....	149	117	109
Hog .....	97	69	64
Dairy .....	101	91	86
Poultry and egg .....	137	123	111
Food Commodity .....	115	101	97

## Prices Received Indexes, 1910-1914 Base – United States: December 2015 with Comparisons

[Revised historical price indexes for months not shown are available at [www.nass.usda.gov](http://www.nass.usda.gov)]

Index Group	1910 - 1914 Base		
	December 2014	November 2015	December 2015
	(percent)	(percent)	(percent)
Agricultural Production .....	1039	950	928
Crop Production .....	720	717	734
Livestock Production .....	1475	1222	1127

## Prices Received Indexes, 2011 Base by Month for Selected Groups – United States: 2014 and 2015

[Revised historical price indexes for months not shown are available at [www.nass.usda.gov](http://www.nass.usda.gov). Blank data cells indicate estimation period has not yet begun]

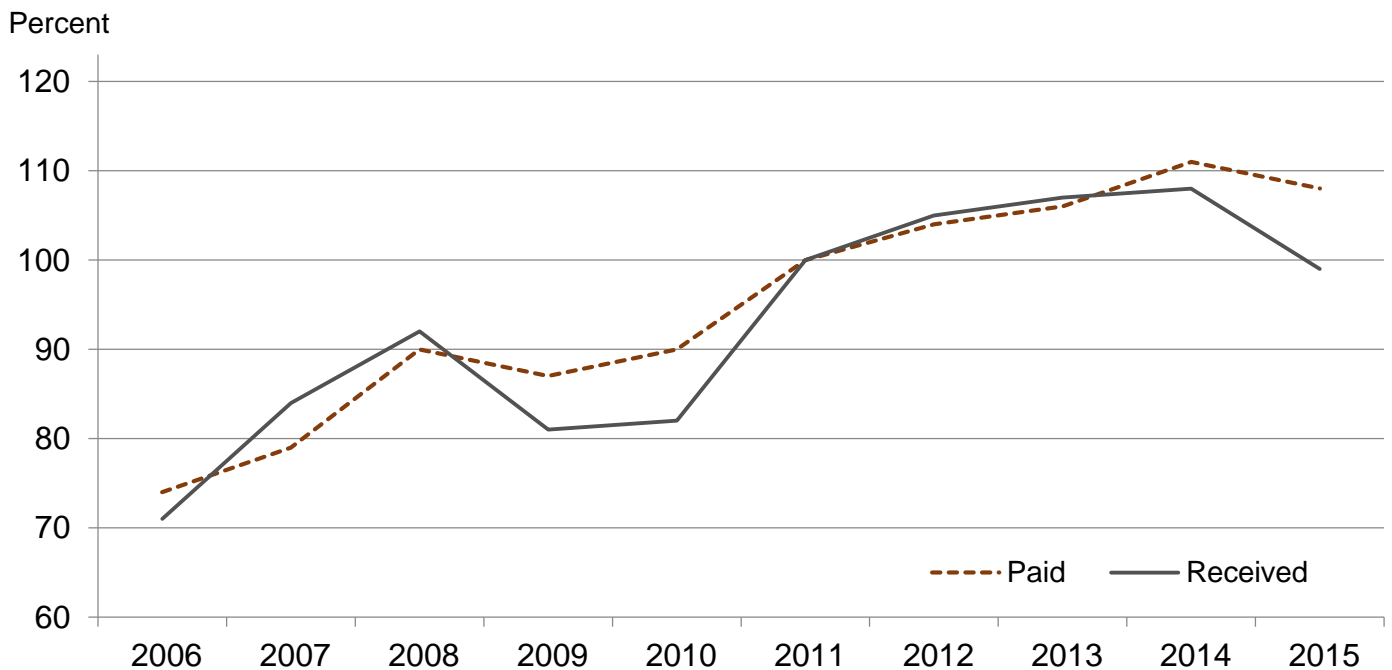
Month	2011 Base							
	Agricultural Production		Crop Production		Livestock Production		Food Commodities	
	2014	2015	2014	2015	2014	2015	2014	2015
	(percent)	(percent)	(percent)	(percent)	(percent)	(percent)	(percent)	(percent)
January .....	99	97	91	82	116	120	111	108
February .....	107	99	94	84	121	114	117	107
March .....	112	102	96	86	128	117	123	110
April .....	115	103	100	89	131	116	126	111
May .....	115	107	100	90	130	122	125	115
June .....	113	105	99	88	128	121	123	113
July .....	110	99	93	86	133	115	121	106
August .....	109	102	91	88	130	117	121	110
September .....	107	98	87	87	132	109	119	103
October .....	100	89	81	80	135	104	112	95
November .....	102	92	82	82	134	105	120	101
December .....	101	90	83	84	127	97	115	97

## Prices Paid Indexes, 2011 Base by Month for Selected Groups – United States: 2014 and 2015

[Revised historical price indexes for months not shown are available at [www.nass.usda.gov](http://www.nass.usda.gov). Blank data cells indicate estimation period has not yet begun]

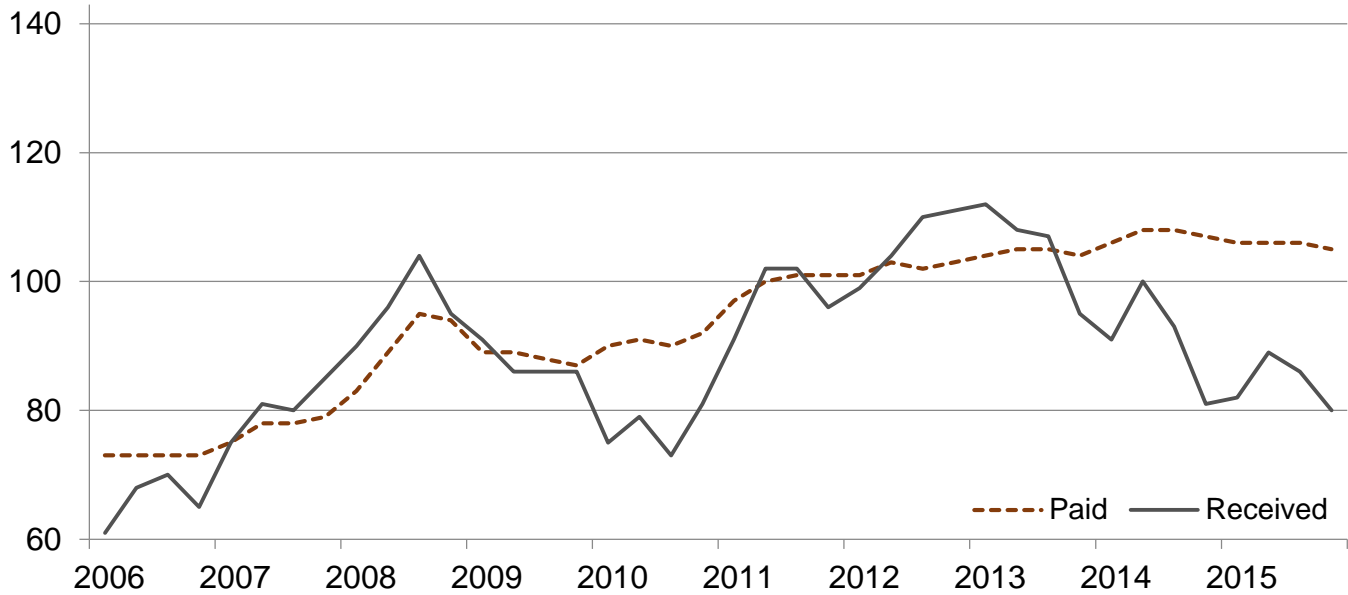
Month	2011 Base							
	All Items (PPITW)		Production		Crop Sector		Livestock Sector	
	2014	2015	2014	2015	2014	2015	2014	2015
	(percent)	(percent)	(percent)	(percent)	(percent)	(percent)	(percent)	(percent)
January .....	108	110	110	111	106	106	111	114
February .....	109	110	110	111	107	106	112	113
March .....	110	110	112	111	107	106	113	114
April .....	112	110	114	111	108	106	116	114
May .....	112	110	115	111	108	106	117	113
June .....	113	110	116	111	108	106	118	113
July .....	113	109	115	110	108	106	118	113
August .....	112	108	114	109	107	106	116	111
September .....	112	107	115	107	107	105	118	109
October .....	112	107	114	107	107	105	117	109
November .....	112	106	114	106	107	105	117	107
December .....	111	104	114	104	106	104	117	104

## Received and Paid Indexes, Annual Average – United States: 2011=100



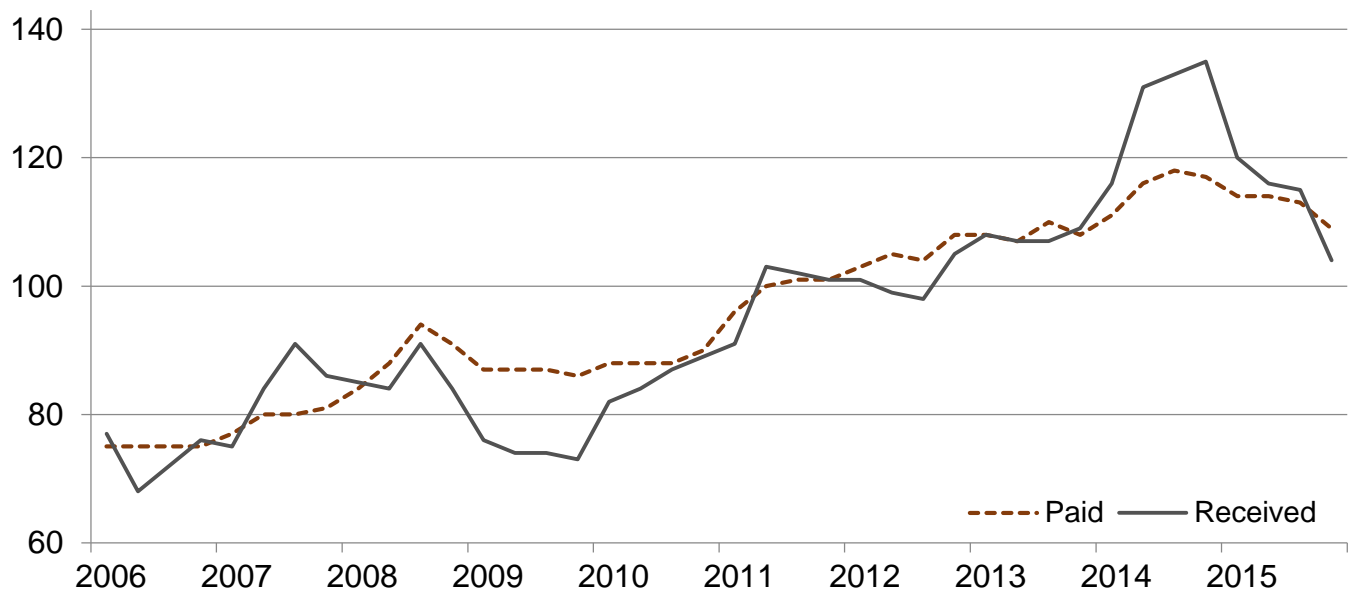
### Crop Farm Received and Paid Indexes, All Items by Quarter – United States: 2011=100

Percent

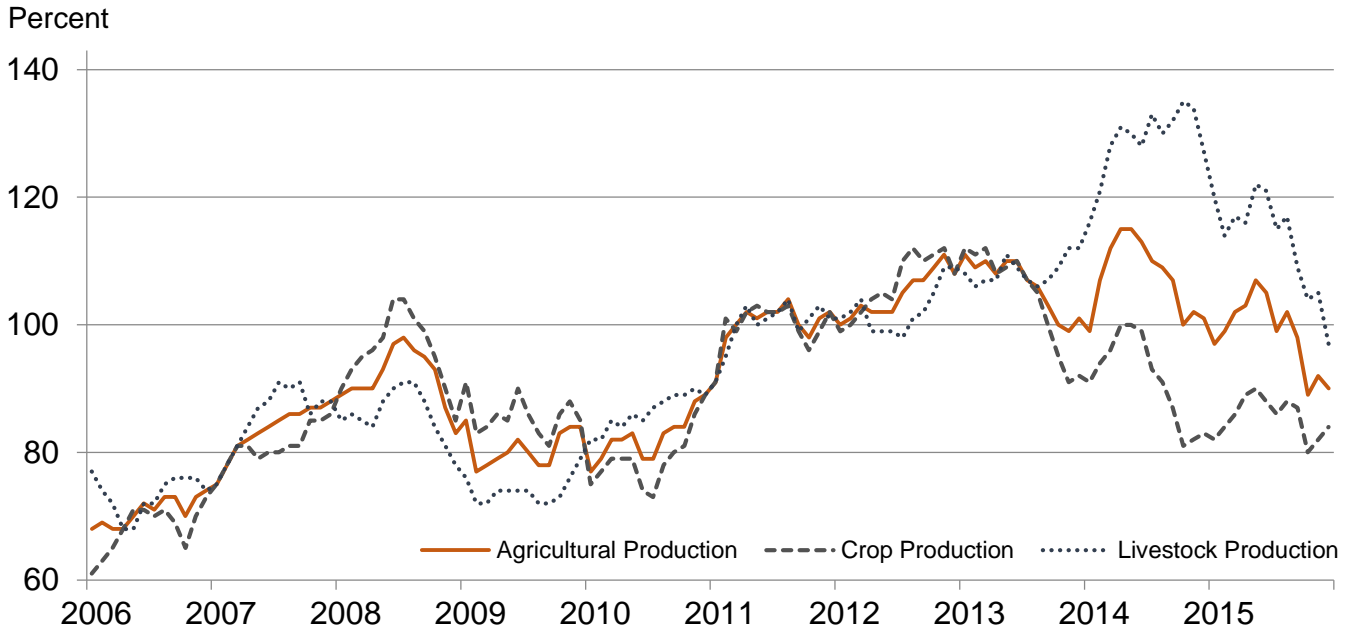


### Livestock Farm Received and Paid Indexes, All Items by Quarter – United States: 2011=100

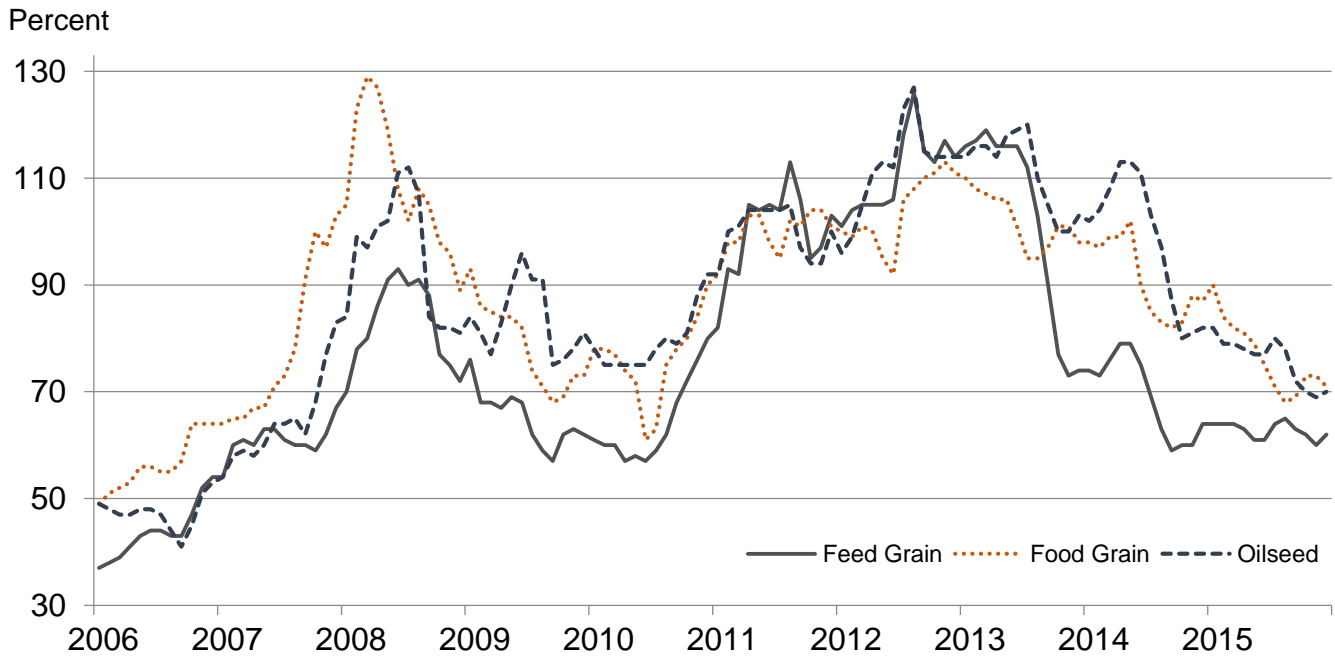
Percent



## Received Indexes by Month, Agricultural, Crop, and Livestock Production – United States: 2011=100

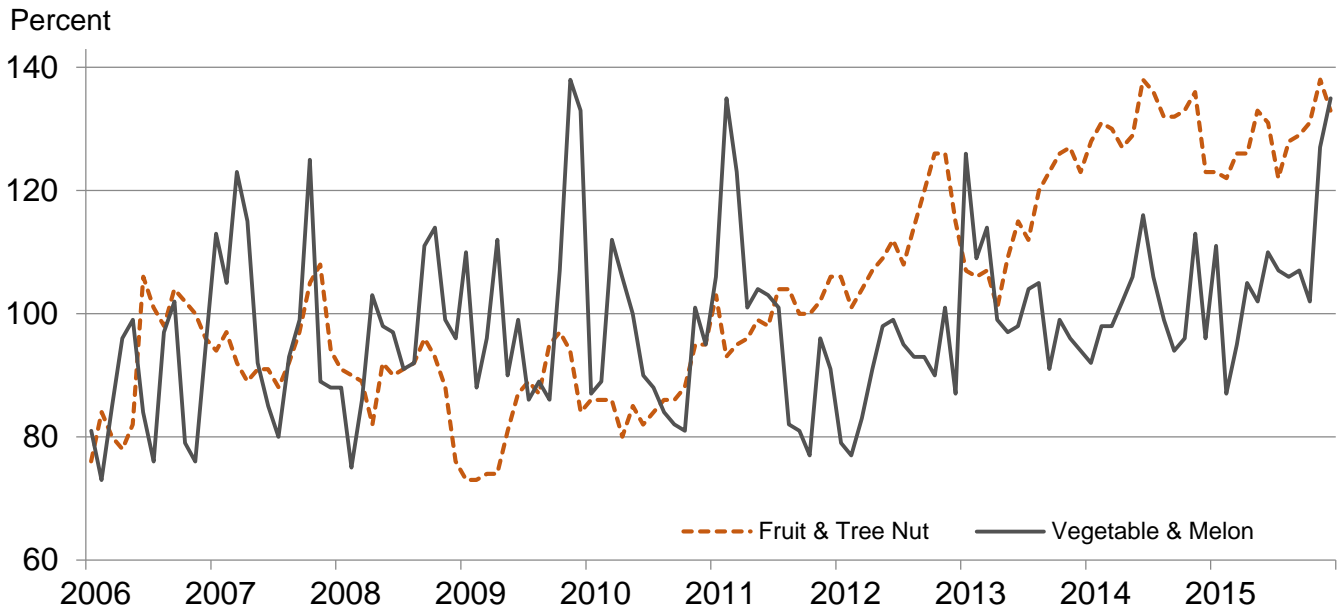


## Received Indexes by Month, Feed Grain, Food Grain, and Oilseed – United States: 2011=100

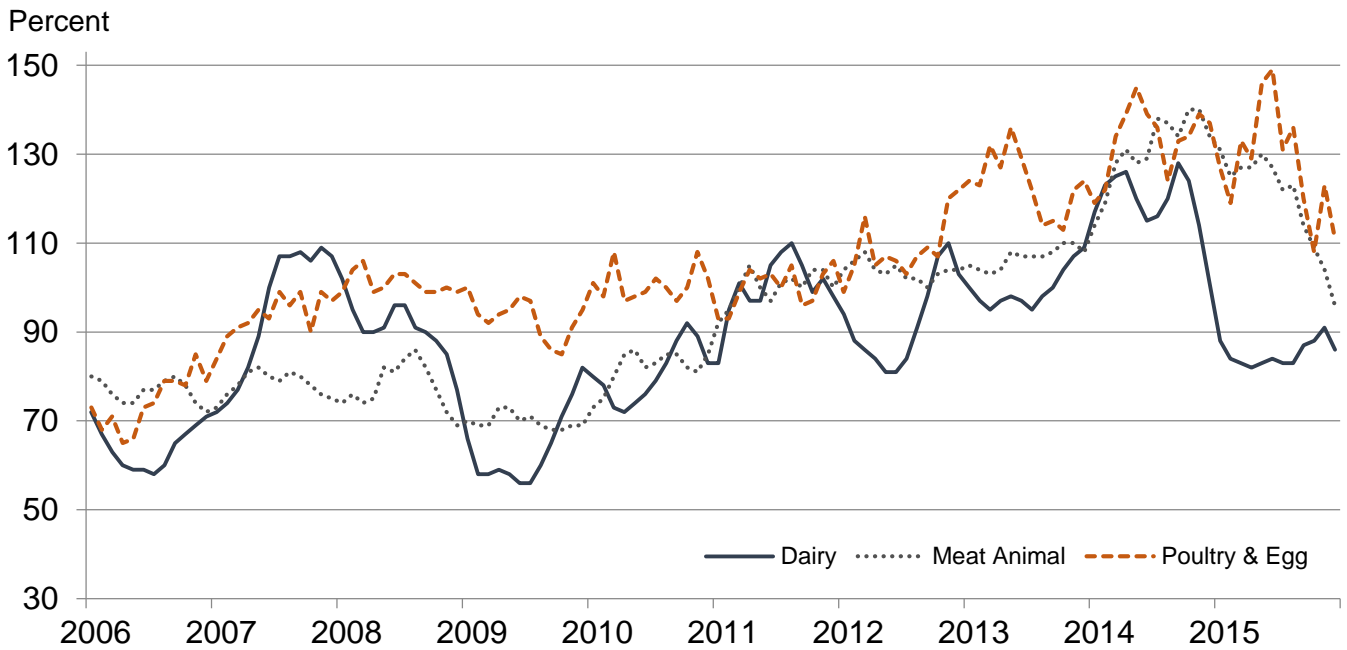




**Received Indexes by Month,  
Fruit & Tree Nut and Vegetable & Melon –  
United States: 2011=100**



**Received Indexes by Month,  
Dairy, Meat Animal, and Poultry & Egg –  
United States: 2011=100**



**Prices Received for Field Crops and Fruits – United States: December 2015 with Comparisons**

Commodity	2011 Base Price	December 2014	November 2015	December 2015
<b>Field crops</b>				
Austrian winter peas .....	dollars/cwt	19.50	(D)	(D)
Barley, all .....	dollars/bushel	4.79	5.16	5.59
Feed .....	dollars/bushel	4.59	2.99	3.03
Malting .....	dollars/bushel	4.83	5.63	5.83
Beans, dry edible .....	dollars/cwt	34.60	34.10	27.10
Canola .....	dollars/cwt	23.10	16.60	15.10
Chickpeas, all .....	dollars/cwt	35.70	25.30	27.00
Large .....	dollars/cwt	39.20	26.70	29.10
Small .....	dollars/cwt	23.40	20.10	24.90
Corn .....	dollars/bushel	6.02	3.79	3.60
Cotton, Upland .....	dollars/pound	0.880	0.608	0.591
Cottonseed .....	dollars/ton	131.00	186.00	234.00
Flaxseed .....	dollars/bushel	14.20	11.40	8.71
Hay, all, baled .....	dollars/ton	159.00	156.00	142.00
Alfalfa .....	dollars/ton	176.00	180.00	150.00
Other .....	dollars/ton	119.00	122.00	127.00
Lentils .....	dollars/cwt	27.50	29.90	31.80
Oats .....	dollars/bushel	3.42	3.21	2.10
Peanuts, in-shell .....	dollars/pound	0.252	0.209	0.178
Peas, dry edible .....	dollars/cwt	13.60	11.60	12.10
Potatoes .....	dollars/cwt	9.78	8.63	8.20
Rice, all .....	dollars/cwt	13.70	13.60	12.30
Long .....	dollars/cwt	12.30	12.50	11.50
Medium and short .....	dollars/cwt	18.40	17.90	15.50
Sorghum grain .....	dollars/cwt	10.70	7.33	5.83
Soybeans .....	dollars/bushel	12.50	10.30	8.68
Sunflowers, all .....	dollars/cwt	29.00	19.70	18.40
Wheat, all .....	dollars/bushel	7.44	6.14	4.86
Winter .....	dollars/bushel	6.93	6.14	4.66
Durum .....	dollars/bushel	9.22	10.70	6.99
Other spring .....	dollars/bushel	8.33	5.80	4.91
Hard red winter .....	dollars/bushel	7.07	6.08	4.30
Soft red winter .....	dollars/bushel	6.77	5.64	4.37
Hard red spring .....	dollars/bushel	8.38	5.77	4.88
White .....	dollars/bushel	6.58	6.60	5.44
<b>Fruits</b>				
<b>Citrus, equivalent on-tree</b>				
Grapefruit .....	dollars/box	7.47	8.92	13.42
Lemons .....	dollars/box	12.30	21.15	30.46
Oranges .....	dollars/box	8.16	9.43	17.56
Tangelos .....	dollars/box	3.50	8.41	12.19
Tangerines and mandarins .....	dollars/box	15.30	(D)	(D)
<b>Non-citrus, fresh</b>				
Apples <sup>1</sup> .....	dollars/pound	0.325	0.318	0.403
Grapes <sup>1</sup> .....	dollars/ton	628.00	1,680.00	1,810.00
Peaches <sup>1</sup> .....	dollars/ton	507.00	(S)	(S)
Pears <sup>1</sup> .....	dollars/ton	559.00	702.00	778.00
Strawberries .....	dollars/cwt	104.00	209.00	190.00

(D) Withheld to avoid disclosing data for individual operations.

(S) Insufficient number of reports to establish an estimate.

<sup>1</sup> Equivalent packinghouse-door returns for California, Michigan, New York (apples only), Pennsylvania (apples only), and Washington (apples, peaches, and pears). Prices as sold for other states.

## Prices Received for Vegetables and Livestock – United States: December 2015 with Comparisons

[Price data source for livestock and poultry commodities is United States Department of Agriculture's Agricultural Marketing Service]

Commodity	2011 Base Price	December 2014	November 2015	December 2015
<b>Vegetables, fresh <sup>1</sup></b>				
Asparagus .....	dollars/cwt 37.50	(NA)	(NA)	(S)
Beans, snap <sup>2</sup> .....	dollars/cwt 69.00	68.10	72.80	118.00
Broccoli .....	dollars/cwt 41.60	33.10	65.10	84.70
Cantaloupes <sup>2</sup> .....	dollars/cwt 16.50	21.30	(D)	(S)
Carrots .....	dollars/cwt 30.80	33.40	31.00	32.90
Cauliflower .....	dollars/cwt 47.00	84.80	121.00	184.00
Celery .....	dollars/cwt 22.50	28.70	40.60	59.80
Corn, sweet .....	dollars/cwt 30.70	41.40	24.40	26.00
Cucumbers <sup>2</sup> .....	dollars/cwt 18.70	34.20	29.30	38.40
Lettuce .....	dollars/cwt 24.30	15.90	60.10	51.90
Onions <sup>3</sup> .....	dollars/cwt 11.90	9.56	12.00	12.20
Tomatoes .....	dollars/cwt 51.20	66.70	39.30	42.50
<b>Livestock</b>				
Calves .....	dollars/cwt 142.00	303.00	217.00	193.00
Cattle, all beef .....	dollars/cwt 115.00	164.00	129.00	122.00
Cows <sup>4</sup> .....	dollars/cwt 71.60	115.00	82.00	74.80
Steers and heifers .....	dollars/cwt 117.00	166.00	131.00	123.00
Milk cows <sup>5 6</sup> .....	dollars/head 1,420.00	1,990.00	1,980.00	1,830.00
Hogs, all .....	dollars/cwt 66.50	64.30	45.90	42.80
Barrows and gilts .....	dollars/cwt 66.80	64.20	45.80	43.30
Sows .....	dollars/cwt 57.90	65.80	48.50	28.40
<b>Dairy and poultry</b>				
Milk, all <sup>7</sup> .....	dollars/cwt 20.10	20.40	18.20	17.20
Fat test .....	percent 3.71	3.86	3.87	3.89
Broilers, live <sup>8</sup> .....	dollars/pound 0.459	0.580	0.420	0.470
Eggs, all <sup>9</sup> .....	dollars/dozen 0.969	1.77	2.00	1.24
Market <sup>9 10</sup> .....	dollars/dozen 0.796	1.66	1.93	1.04
Turkeys, live <sup>11</sup> .....	dollars/pound 0.680	0.734	0.922	0.886
<b>Adjusted for seasonal variation</b>				
Eggs, all .....	dollars/dozen 0.979	1.52	1.72	1.07
Seasonal factor .....	percent 101	116	116	116
Milk, all <sup>7</sup> .....	dollars/cwt 20.20	20.20	17.10	17.10
Seasonal factor .....	percent 100	101	106	101

(D) Withheld to avoid disclosing data for individual operations.

(NA) Not available.

(S) Insufficient number of reports to establish an estimate.

<sup>1</sup> Beginning January 2006, point of first sale. FOB shipping point for prior years.

<sup>2</sup> Monthly estimates began January 1995.

<sup>3</sup> Includes some processing.

<sup>4</sup> Beef cows and cull dairy cows sold for slaughter.

<sup>5</sup> Animals sold for dairy herd replacement only. Prices available for January, April, July, and October.

<sup>6</sup> Milk cow prices are for January 2015, October 2015, and January 2016.

<sup>7</sup> Before deductions for hauling. Includes quality, quantity, and other premiums. Excludes hauling subsidies.

<sup>8</sup> Live weight equivalent price.

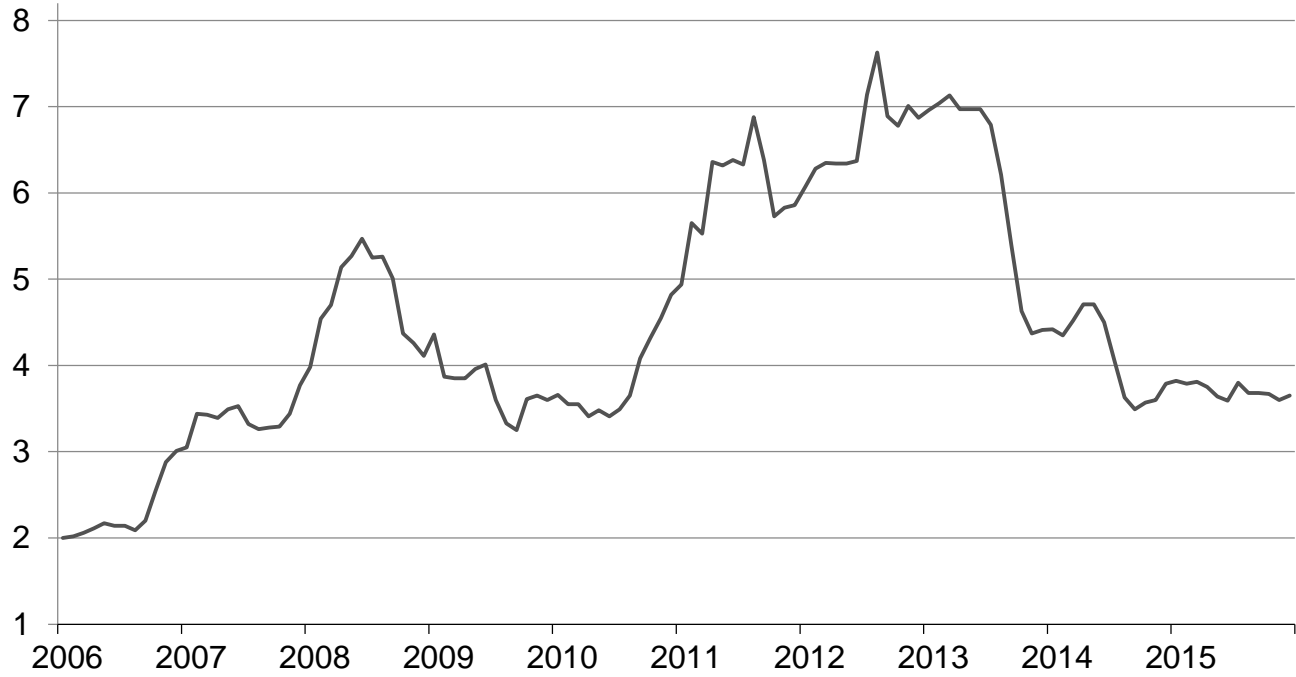
<sup>9</sup> Mid-month price.

<sup>10</sup> Also referred to as table eggs.

<sup>11</sup> Live weight equivalent price is used when actual live weight price is not available. Beginning January 2011, price reflects FOB shipping point basis. Prior year price reflects delivered basis.

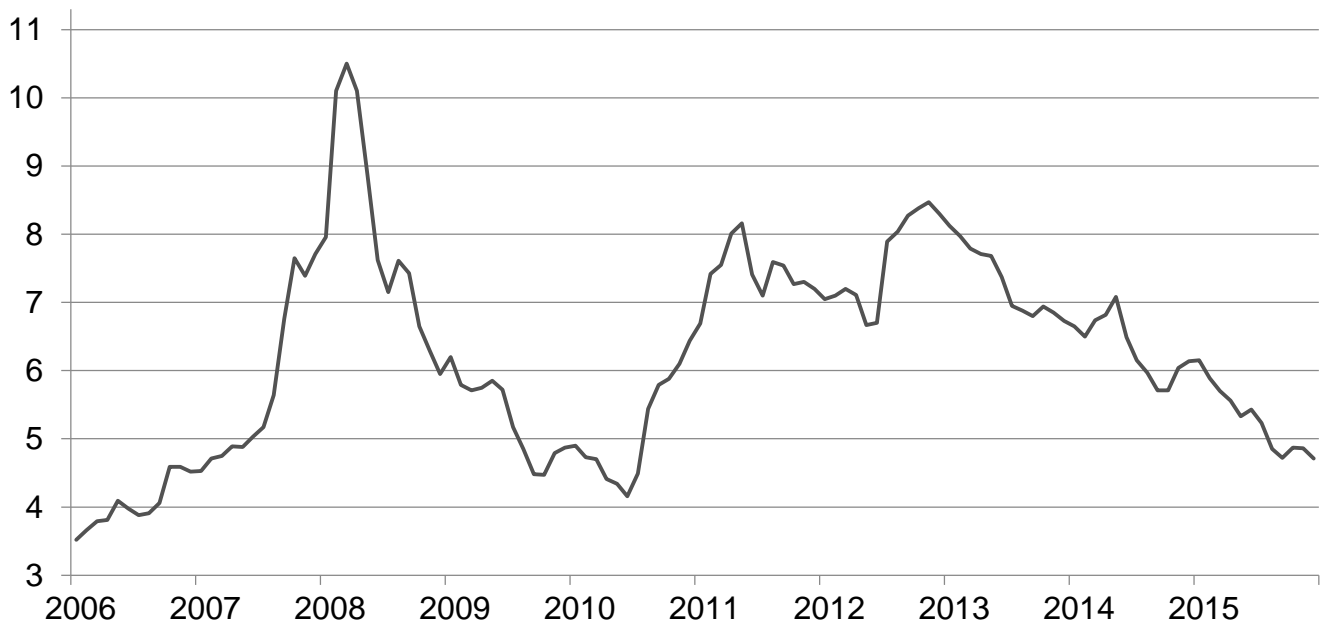
## Prices Received for Corn by Month – United States

Dollars per bushel



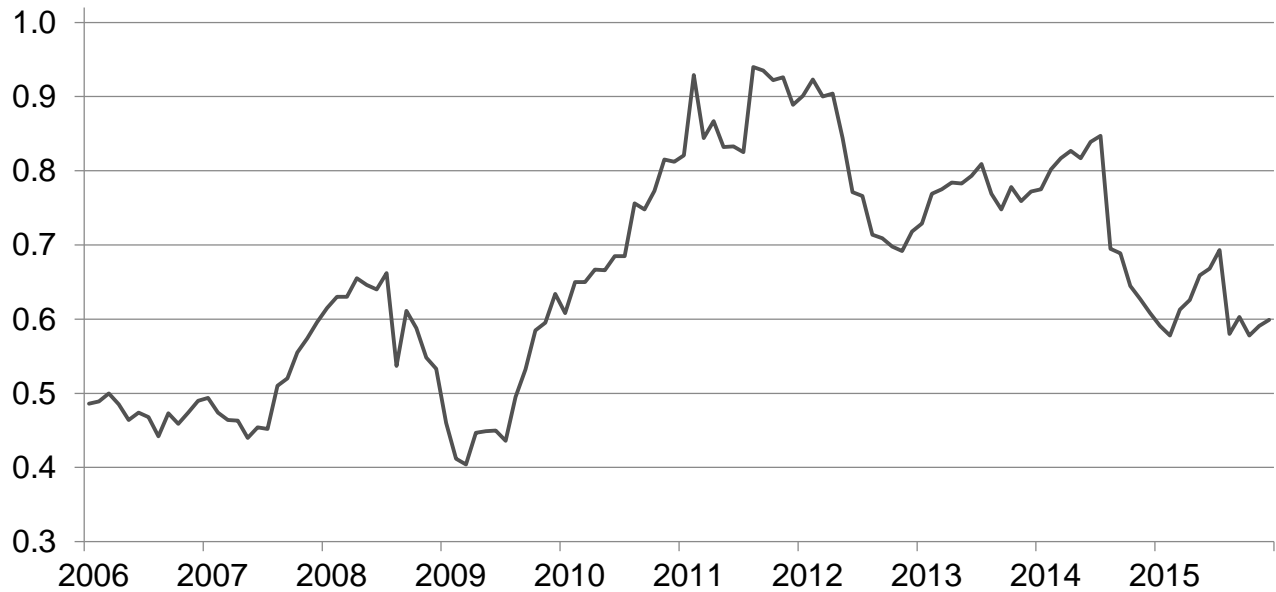
## Prices Received for Wheat by Month – United States

Dollars per bushel



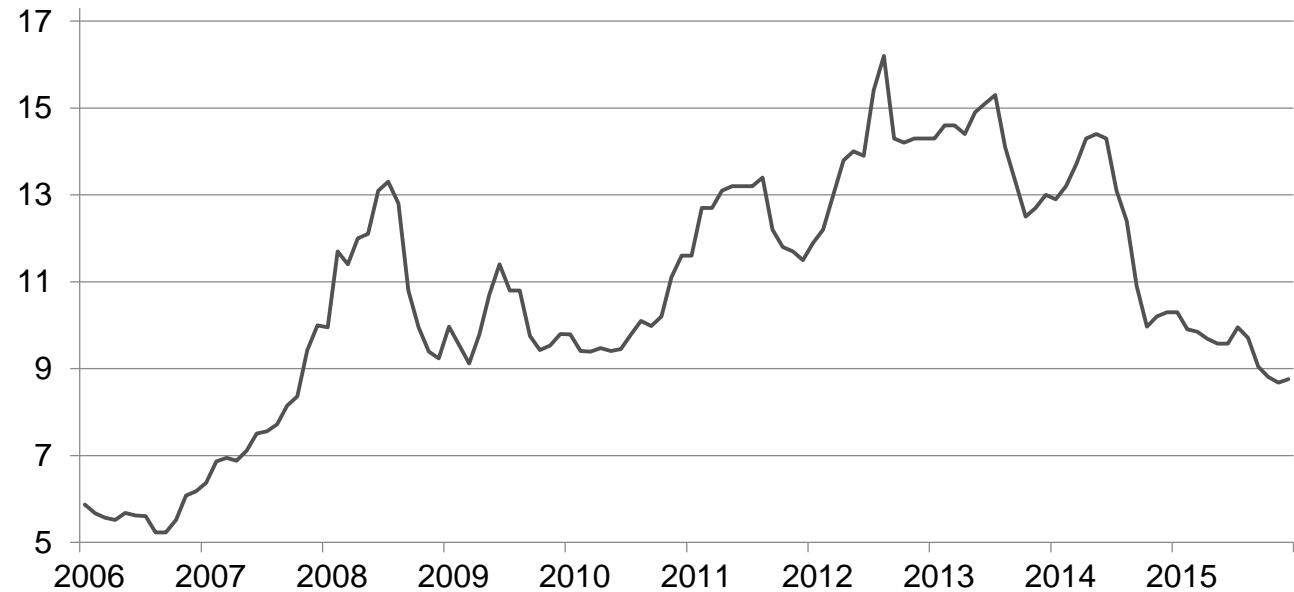
## Prices Received for Upland Cotton by Month – United States

Dollars per pound



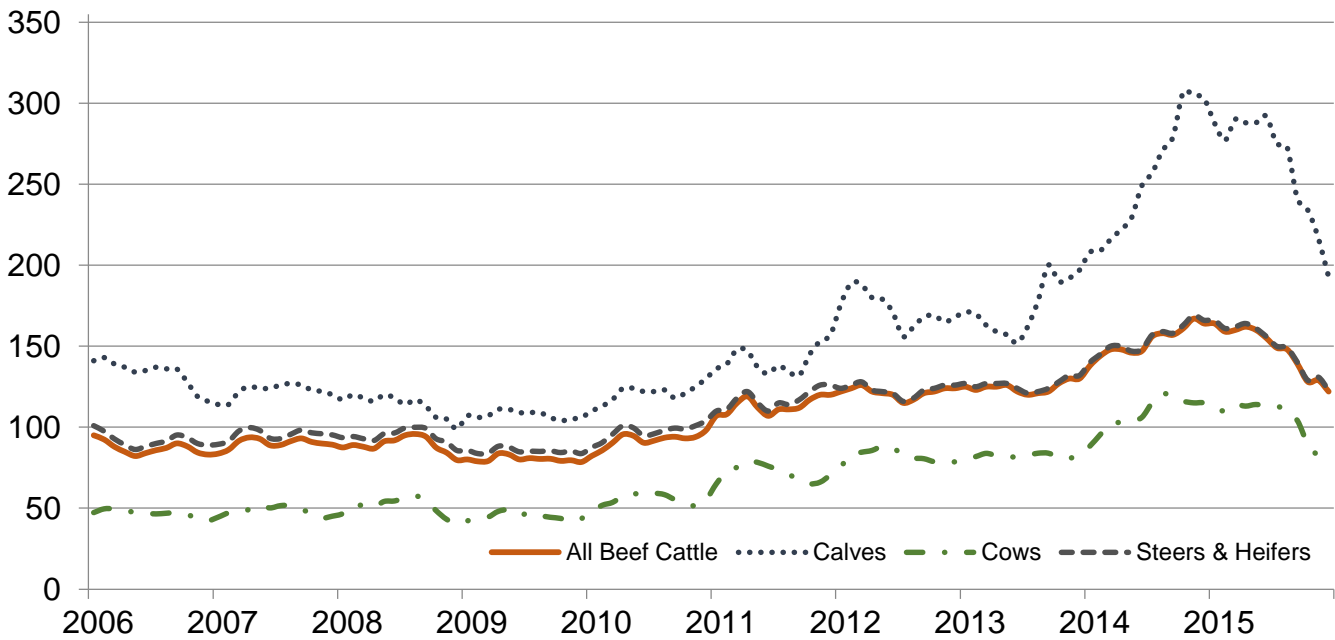
## Prices Received for Soybeans by Month - United States

Dollars per bushel



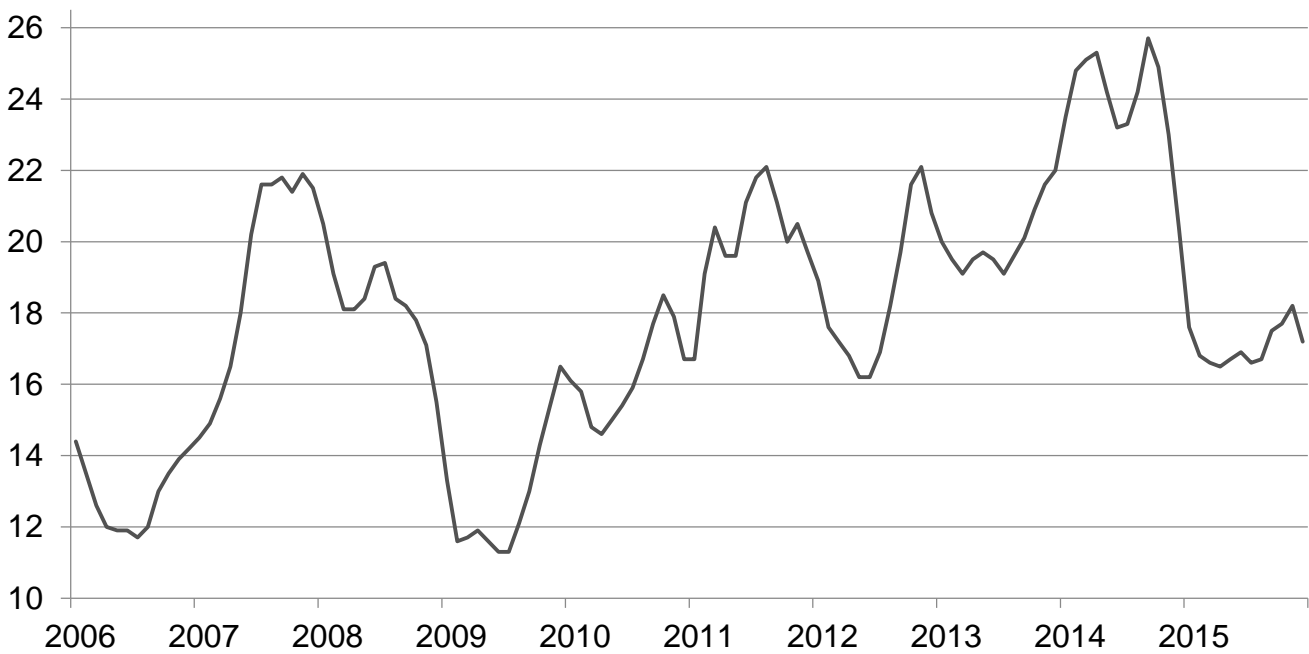
## Prices Received for Cattle by Month – United States

Dollars per cwt



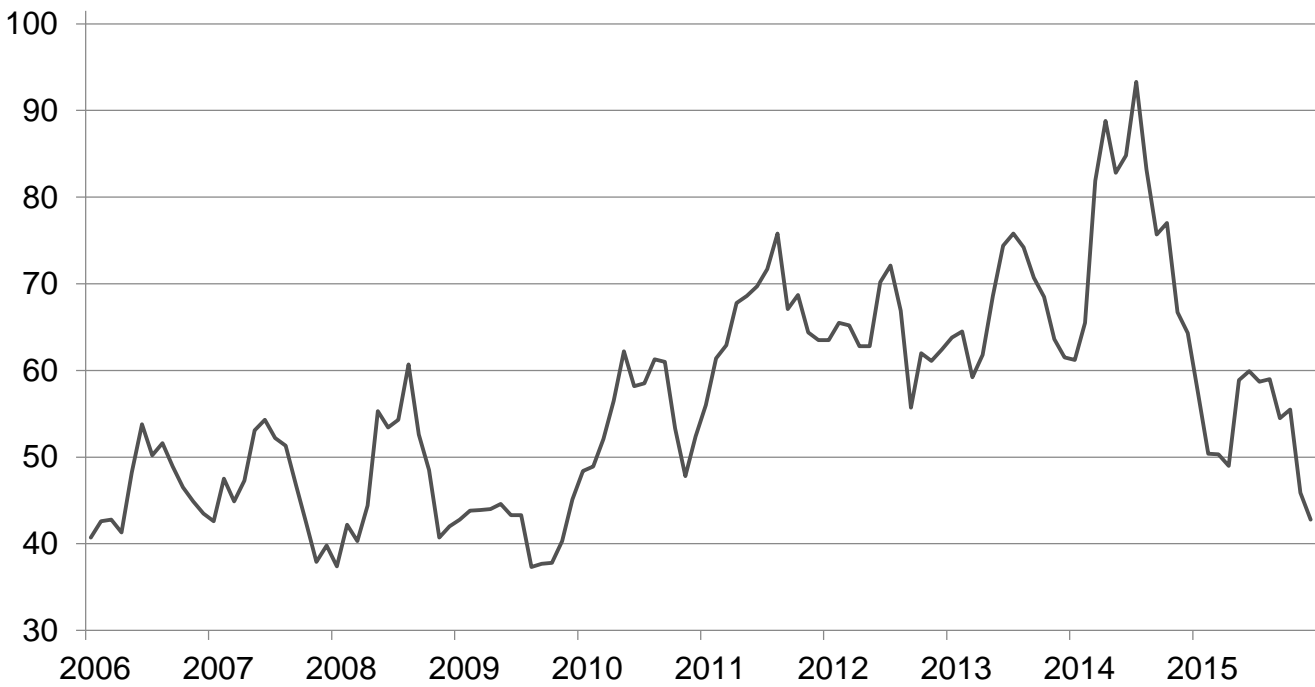
## Prices Received for Milk by Month – United States

Dollars per cwt



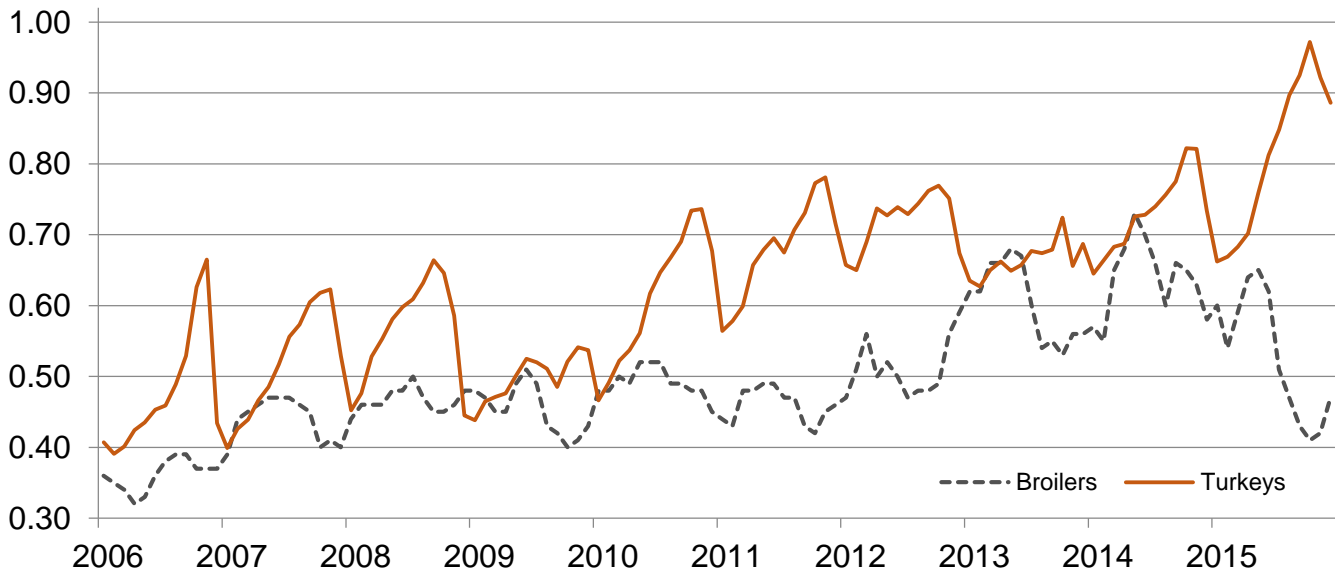
## Prices Received for Hogs by Month – United States

Dollars per cwt



## Prices Received for Poultry by Month – United States

Dollars per pound



## Prices Received for All Wheat, Corn, and Soybeans by Month – United States: 2015 with Comparisons

[Blank data cells indicate estimation period has not yet begun]

Month	All wheat			Corn			Soybeans		
	2013	2014	2015	2013	2014	2015	2013	2014	2015
	(dollars per bushel)	(dollars per bushel)	(dollars per bushel)	(dollars per bushel)	(dollars per bushel)	(dollars per bushel)	(dollars per bushel)	(dollars per bushel)	(dollars per bushel)
January .....	8.12	6.65	6.15	6.96	4.42	3.82	14.30	12.90	10.30
February .....	7.97	6.50	5.89	7.04	4.35	3.79	14.60	13.20	9.91
March .....	7.79	6.74	5.70	7.13	4.52	3.81	14.60	13.70	9.85
April .....	7.71	6.82	5.56	6.97	4.71	3.75	14.40	14.30	9.69
May .....	7.68	7.08	5.33	6.97	4.71	3.64	14.90	14.40	9.58
June .....	7.37	6.49	5.43	6.97	4.50	3.59	15.10	14.30	9.58
July .....	6.95	6.15	5.23	6.79	4.06	3.80	15.30	13.10	9.95
August .....	6.88	5.97	4.85	6.21	3.63	3.68	14.10	12.40	9.71
September .....	6.80	5.71	4.72	5.40	3.49	3.68	13.30	10.90	9.05
October .....	6.94	5.71	4.87	4.63	3.57	3.67	12.50	9.97	8.81
November .....	6.85	6.04	4.86	4.37	3.60	3.60	12.70	10.20	8.68
December .....	6.73	6.14	4.71	4.41	3.79	3.65	13.00	10.30	8.76

## Prices Received for Beef Cattle and All Hogs by Month – United States: 2015 with Comparisons

[Blank data cells indicate estimation period has not yet begun]

Month	Beef cattle <sup>1</sup>			All hogs <sup>2</sup>		
	2013	2014	2015	2013	2014	2015
	(dollars per cwt)	(dollars per cwt)	(dollars per cwt)	(dollars per cwt)	(dollars per cwt)	(dollars per cwt)
January .....	125.00	138.00	164.00	63.80	61.20	57.40
February .....	123.00	144.00	159.00	64.50	65.50	50.40
March .....	125.00	148.00	160.00	59.20	81.90	50.30
April .....	125.00	148.00	162.00	61.80	88.80	49.00
May .....	126.00	146.00	160.00	68.60	82.80	58.90
June .....	122.00	147.00	155.00	74.40	84.80	59.90
July .....	120.00	156.00	149.00	75.80	93.30	58.70
August .....	121.00	158.00	148.00	74.20	83.20	59.00
September .....	122.00	157.00	139.00	70.70	75.70	54.50
October .....	127.00	161.00	128.00	68.50	77.00	55.50
November .....	130.00	167.00	129.00	63.60	66.70	45.90
December .....	130.00	164.00	122.00	61.50	64.30	42.80

<sup>1</sup> Cows and steers & heifers.

<sup>2</sup> Barrows & gilts and sows.



## Prices Received for All Wheat – States and United States: December 2015 with Comparisons

State	December 2014	November 2015	December 2015
	(dollars per bushel)	(dollars per bushel)	(dollars per bushel)
Arizona .....	(D)	(D)	(D)
Arkansas .....	5.97	(D)	4.09
California .....	7.24	(D)	5.43
Colorado .....	6.18	3.98	4.06
Idaho .....	6.17	5.20	5.35
Illinois .....	5.35	4.16	3.65
Indiana .....	5.42	4.45	5.05
Kansas .....	6.19	4.22	4.18
Michigan .....	6.11	5.81	5.63
Minnesota .....	5.64	5.00	4.72
Missouri .....	5.61	3.32	3.73
Montana .....	6.36	5.13	5.17
Nebraska .....	5.93	3.97	4.00
North Carolina .....	5.29	4.86	4.98
North Dakota .....	6.05	4.96	4.86
Ohio .....	6.08	4.24	4.38
Oklahoma .....	6.23	4.17	4.45
Oregon .....	7.30	5.49	5.25
South Dakota .....	5.88	4.66	4.70
Texas .....	6.03	3.91	3.84
Washington .....	6.82	5.54	5.36
United States .....	6.14	4.86	4.71

(D) Withheld to avoid disclosing data for individual operations.

## Prices Received for Winter Wheat – States and United States: December 2015 with Comparisons

State	December 2014	November 2015	December 2015
	(dollars per bushel)	(dollars per bushel)	(dollars per bushel)
Arkansas .....	5.97	(D)	4.09
California .....	7.24	(D)	5.45
Colorado .....	6.19	3.98	4.07
Idaho .....	6.01	5.18	5.32
Illinois .....	5.35	4.16	3.65
Indiana .....	5.42	4.45	5.05
Kansas .....	6.19	4.22	4.18
Michigan .....	6.11	5.81	5.63
Minnesota .....	5.56	4.24	(D)
Missouri .....	5.61	3.32	3.73
Montana .....	5.99	4.78	4.91
Nebraska .....	5.93	3.97	4.00
North Carolina .....	5.29	4.86	4.98
North Dakota .....	4.85	3.90	3.71
Ohio .....	6.08	4.24	4.38
Oklahoma .....	6.23	4.17	4.45
Oregon .....	7.25	5.46	5.23
South Dakota .....	5.81	4.15	4.17
Texas .....	6.03	3.91	3.84
Washington .....	6.69	5.49	5.31
United States .....	6.14	4.66	4.49

(D) Withheld to avoid disclosing data for individual operations.

**Prices Received for Durum Wheat – States and United States: December 2015 with Comparisons**

State	December 2014	November 2015	December 2015
	(dollars per bushel)	(dollars per bushel)	(dollars per bushel)
Arizona .....	(D)	(D)	(D)
California .....	(S)	(S)	(D)
Idaho .....	(D)	(D)	(D)
Montana .....	10.60	(D)	(D)
North Dakota .....	10.90	7.05	7.02
United States .....	10.70	6.99	6.93

(D) Withheld to avoid disclosing data for individual operations.

(S) Insufficient number of reports to establish an estimate.

**Prices Received for Spring Wheat – States and United States: December 2015 with Comparisons**

State	December 2014	November 2015	December 2015
	(dollars per bushel)	(dollars per bushel)	(dollars per bushel)
Colorado .....	(D)	(D)	(D)
Idaho .....	6.41	5.13	5.40
Minnesota .....	5.64	5.00	4.72
Montana .....	6.21	5.11	4.95
North Dakota .....	5.56	4.71	4.64
Oregon .....	7.64	5.71	5.37
South Dakota .....	5.92	4.78	4.83
Washington .....	7.45	5.82	5.59
United States .....	5.80	4.91	4.77

(D) Withheld to avoid disclosing data for individual operations.

**Prices Received for Oats – States and United States: December 2015 with Comparisons**

State	December 2014	November 2015	December 2015
	(dollars per bushel)	(dollars per bushel)	(dollars per bushel)
Illinois .....	(S)	(D)	(D)
Iowa .....	3.76	2.71	2.64
Michigan .....	(D)	1.84	(D)
Minnesota .....	2.89	2.39	2.12
Montana .....	(D)	(D)	(S)
Nebraska .....	2.92	(D)	(D)
New York .....	(D)	(D)	2.33
North Dakota .....	2.36	2.08	2.26
Oregon .....	(D)	(D)	(S)
Pennsylvania .....	(S)	(D)	(D)
South Dakota .....	3.15	2.01	2.03
Texas .....	(S)	(S)	(D)
Wisconsin .....	3.23	1.89	1.89
United States .....	3.21	2.10	2.11

(D) Withheld to avoid disclosing data for individual operations.

(S) Insufficient number of reports to establish an estimate.

**Prices Received for All Barley – States and United States: December 2015 with Comparisons**

State	December 2014	November 2015	December 2015
	(dollars per bushel)	(dollars per bushel)	(dollars per bushel)
California .....	(S)	(D)	(D)
Colorado .....	(S)	6.23	(D)
Idaho .....	5.22	5.79	6.22
Minnesota .....	5.45	5.28	5.22
Montana .....	4.90	5.86	6.06
North Dakota .....	5.31	5.04	5.00
Oregon .....	(D)	(D)	(D)
Utah .....	(D)	(D)	3.56
Washington .....	3.34	3.12	2.96
Wyoming .....	(D)	6.22	(D)
United States .....	5.16	5.59	5.89

(D) Withheld to avoid disclosing data for individual operations.  
(S) Insufficient number of reports to establish an estimate.

**Prices Received for Malting Barley – States and United States: December 2015 with Comparisons**

State	December 2014	November 2015	December 2015
	(dollars per bushel)	(dollars per bushel)	(dollars per bushel)
Idaho .....	5.75	6.05	6.48
Minnesota .....	5.45	5.30	5.30
Montana .....	5.58	6.04	6.11
North Dakota .....	5.43	5.11	5.04
Wyoming .....	(D)	6.22	(D)
United States .....	5.63	5.83	5.99

(D) Withheld to avoid disclosing data for individual operations.

**Prices Received for Feed Barley – States and United States: December 2015 with Comparisons**

State	December 2014	November 2015	December 2015
	(dollars per bushel)	(dollars per bushel)	(dollars per bushel)
Idaho .....	2.91	3.07	3.00
Minnesota .....	(D)	(D)	2.93
Montana .....	2.71	2.80	(D)
North Dakota .....	2.74	2.23	2.29
Wyoming .....	(S)	(S)	(D)
United States .....	2.99	3.03	3.12

(D) Withheld to avoid disclosing data for individual operations.  
(S) Insufficient number of reports to establish an estimate.

**Prices Received for Sorghum Grain – States and United States: December 2015 with Comparisons**

State	December 2014	November 2015	December 2015
	(dollars per cwt)	(dollars per cwt)	(dollars per cwt)
Arkansas .....	7.25	7.82	7.20
Illinois .....	(D)	(D)	6.72
Kansas .....	7.30	5.62	5.57
Louisiana .....	(D)	(D)	7.76
Missouri .....	6.96	6.74	6.44
Nebraska .....	7.48	5.82	5.78
Oklahoma .....	7.87	5.97	6.04
Texas .....	7.24	6.34	6.20
United States .....	7.33	5.83	5.76

(D) Withheld to avoid disclosing data for individual operations.

### Prices Received for Corn – States and United States: December 2015 with Comparisons

State	December 2014	November 2015	December 2015
	(dollars per bushel)	(dollars per bushel)	(dollars per bushel)
Colorado .....	4.13	3.72	3.66
Illinois .....	3.81	3.69	3.79
Indiana .....	3.80	3.99	3.88
Iowa .....	3.79	3.53	3.53
Kansas .....	3.90	3.72	3.63
Kentucky .....	3.95	3.76	3.96
Michigan .....	3.63	3.50	3.56
Minnesota .....	3.73	3.43	3.44
Missouri .....	3.62	3.75	3.80
Nebraska .....	3.79	3.62	3.64
North Carolina .....	4.51	4.21	4.41
North Dakota .....	3.49	3.26	3.23
Ohio .....	3.90	3.87	4.01
Pennsylvania .....	3.95	3.77	3.93
South Dakota .....	3.43	3.28	3.32
Tennessee .....	4.26	3.98	4.01
Texas .....	4.50	4.03	4.12
Wisconsin .....	3.69	3.42	3.38
United States .....	3.79	3.60	3.65

### Prices Received for Soybeans – States and United States: December 2015 with Comparisons

State	December 2014	November 2015	December 2015
	(dollars per bushel)	(dollars per bushel)	(dollars per bushel)
Arkansas .....	10.70	9.25	9.32
Illinois .....	10.50	8.92	8.99
Indiana .....	10.50	8.77	8.95
Iowa .....	10.00	8.58	8.45
Kansas .....	9.75	8.21	8.27
Kentucky .....	10.70	9.11	9.22
Louisiana .....	10.90	9.89	9.67
Michigan .....	10.10	8.30	8.40
Minnesota .....	10.10	8.51	8.55
Mississippi .....	11.10	9.62	9.83
Missouri .....	10.30	8.89	8.91
Nebraska .....	9.88	8.33	8.36
North Carolina .....	10.10	8.49	8.36
North Dakota .....	9.82	8.21	8.23
Ohio .....	10.60	8.83	9.06
South Dakota .....	9.85	8.51	8.26
Tennessee .....	10.70	9.15	9.21
Wisconsin .....	10.00	8.36	8.44
United States .....	10.30	8.68	8.76

### Prices Received for Dry Beans – States and United States: December 2015 with Comparisons

State	December 2014	November 2015	December 2015
	(dollars per cwt)	(dollars per cwt)	(dollars per cwt)
California .....	65.60	77.50	71.70
Colorado .....	24.00	19.50	26.20
Idaho .....	27.10	35.70	33.90
Michigan .....	38.10	27.00	25.30
Minnesota .....	(D)	32.50	29.40
Nebraska .....	(D)	(D)	(D)
North Dakota .....	29.70	23.60	21.00
United States .....	34.10	27.10	23.70

(D) Withheld to avoid disclosing data for individual operations.

### Prices Received for Peanuts (in shell) – States and United States: December 2015 with Comparisons

State	December 2014	November 2015	December 2015
	(dollars per pound)	(dollars per pound)	(dollars per pound)
Alabama .....	0.208	0.130	0.141
Florida .....	0.216	0.190	0.153
Georgia .....	0.202	0.177	0.183
Mississippi .....	0.190	0.169	0.112
New Mexico .....	(S)	0.216	(S)
North Carolina .....	0.258	0.201	0.208
Oklahoma .....	0.093	0.215	0.211
South Carolina .....	0.243	0.083	0.082
Texas .....	0.202	0.216	0.207
Virginia .....	(S)	0.215	(S)
United States .....	0.209	0.178	0.178

(S) Insufficient number of reports to establish an estimate.

### Prices Received for Sunflower – States and United States: December 2015 with Comparisons

State	December 2014	November 2015	December 2015
	(dollars per cwt)	(dollars per cwt)	(dollars per cwt)
Colorado .....	(D)	(S)	(D)
Kansas .....	18.60	21.20	20.10
Minnesota .....	(D)	21.20	19.00
North Dakota .....	21.90	19.00	21.30
South Dakota .....	17.60	16.80	17.30
United States .....	19.70	18.40	19.40

(D) Withheld to avoid disclosing data for individual operations.

(S) Insufficient number of reports to establish an estimate.

### Prices Received for Canola – States and United States: December 2015 with Comparisons

State	December 2014	November 2015	December 2015
	(dollars per cwt)	(dollars per cwt)	(dollars per cwt)
Minnesota .....	(D)	(D)	(S)
North Dakota .....	16.60	15.10	14.90
United States .....	16.60	15.10	14.90

(D) Withheld to avoid disclosing data for individual operations.

(S) Insufficient number of reports to establish an estimate.

## Prices Received for Flaxseed – States and United States: December 2015 with Comparisons

State	December 2014	November 2015	December 2015
	(dollars per bushel)	(dollars per bushel)	(dollars per bushel)
North Dakota .....	11.40	8.71	8.62
United States .....	11.40	8.71	8.62

## Prices Received for Upland Cotton and Cottonseed – States and United States: December 2015 with Comparisons

[Cottonseed marketing year August - February]

State	Cotton, Upland			Cottonseed		
	December 2014	November 2015	December 2015	December 2014	November 2015	December 2015
	(dollars per pound)	(dollars per pound)	(dollars per pound)	(dollars per ton)	(dollars per ton)	(dollars per ton)
Alabama .....	0.630	0.656	0.609	186.00	204.00	203.00
Arizona .....	0.648	0.628	0.638	282.00	303.00	323.00
Arkansas .....	0.605	0.592	0.609	(S)	285.00	(S)
California .....	(D)	(S)	(S)	(S)	299.00	(D)
Georgia .....	0.630	0.637	0.623	173.00	195.00	194.00
Louisiana .....	0.609	0.567	0.579	(S)	(S)	270.00
Mississippi .....	0.612	0.585	0.608	(S)	280.00	265.00
North Carolina .....	0.660	0.577	0.559	195.00	235.00	218.00
Tennessee .....	0.602	0.593	0.608	(S)	272.00	(S)
Texas .....	0.594	0.569	0.591	183.00	227.00	225.00
United States .....	0.608	0.591	0.599	186.00	234.00	217.00

(D) Withheld to avoid disclosing data for individual operations.

(S) Insufficient number of reports to establish an estimate.

## Prices Received and Farm Marketings for Upland Cotton and Rice – United States: December 2015 with Comparisons

Item	December 2014	November 2015	December 2015
Cotton, Upland			
Average price ..... dollars/pound	0.608	0.591	0.599
Marketings <sup>1</sup> ..... 1,000 bales	3,721	1,007	2,359
Rice, all			
Average price ..... dollars/cwt	13.60	12.30	12.80
Marketings <sup>2</sup> ..... 1,000 cwt	17,627	13,160	14,793
Rice, long			
Average price ..... dollars/cwt	12.50	11.50	11.40
Marketings <sup>2</sup> ..... 1,000 cwt	13,776	10,267	10,432
Rice, medium and short			
California			
Average price ..... dollars/cwt	21.30	18.60	18.90
Other States <sup>3</sup>			
Average price ..... dollars/cwt	15.00	11.90	11.80
United States			
Average price ..... dollars/cwt	17.90	15.50	16.20
Marketings <sup>2</sup> ..... 1,000 cwt	3,851	2,893	4,361

<sup>1</sup> Marketings based on a survey of cotton buyers in the major producing States - Alabama, Arizona, Arkansas, California, Georgia, Louisiana, Mississippi, North Carolina, Tennessee, and Texas.

<sup>2</sup> Purchases by private firms and rice (rough equivalent) shipped by cooperatives.

<sup>3</sup> Other States include Arkansas, Louisiana, Mississippi, Missouri, and Texas.

## Prices Received for Hay by Type – States and United States: December 2015 with Comparisons

State	All hay			Alfalfa hay			Other hay		
	December 2014	November 2015	December 2015	December 2014	November 2015	December 2015	December 2014	November 2015	December 2015
	(dollars per ton)	(dollars per ton)	(dollars per ton)	(dollars per ton)	(dollars per ton)	(dollars per ton)	(dollars per ton)	(dollars per ton)	(dollars per ton)
Arizona .....	201.00	141.00	141.00	200.00	140.00	140.00	220.00	200.00	200.00
California .....	207.00	152.00	157.00	220.00	160.00	165.00	160.00	120.00	120.00
Colorado .....	200.00	159.00	159.00	200.00	160.00	160.00	195.00	150.00	150.00
Idaho .....	199.00	178.00	188.00	200.00	180.00	190.00	170.00	150.00	150.00
Illinois .....	159.00	145.00	150.00	180.00	160.00	170.00	115.00	100.00	110.00
Iowa .....	132.00	120.00	110.00	144.00	125.00	120.00	105.00	95.00	94.00
Kansas .....	140.00	101.00	105.00	154.00	110.00	114.00	92.00	80.00	76.00
Kentucky .....	118.00	131.00	139.00	195.00	215.00	220.00	95.00	110.00	115.00
Michigan .....	163.00	187.00	144.00	180.00	200.00	160.00	140.00	170.00	130.00
Minnesota .....	140.00	93.00	93.00	158.00	109.00	105.00	94.00	76.00	73.00
Missouri .....	91.00	93.00	95.00	170.00	160.00	170.00	75.00	75.00	80.00
Montana .....	123.00	124.00	119.00	125.00	125.00	120.00	115.00	120.00	110.00
Nebraska .....	94.00	84.00	85.00	98.00	89.00	89.00	85.00	75.00	76.00
Nevada .....	235.00	166.00	161.00	235.00	165.00	160.00	220.00	195.00	175.00
New Mexico .....	223.00	179.00	179.00	235.00	185.00	185.00	145.00	145.00	145.00
New York .....	136.00	192.00	173.00	222.00	200.00	225.00	132.00	192.00	170.00
North Dakota .....	83.00	79.00	77.00	85.00	80.00	78.00	59.00	58.00	57.00
Ohio .....	144.00	152.00	150.00	175.00	200.00	200.00	120.00	120.00	110.00
Oklahoma .....	93.00	124.00	136.00	193.00	162.00	180.00	86.00	68.00	83.00
Oregon .....	216.00	207.00	186.00	240.00	220.00	200.00	190.00	190.00	170.00
Pennsylvania .....	212.00	241.00	234.00	240.00	253.00	231.00	208.00	235.00	234.00
South Dakota .....	112.00	102.00	107.00	119.00	107.00	111.00	94.00	87.00	92.00
Texas .....	82.00	95.00	97.00	233.00	212.00	205.00	67.00	76.00	82.00
Utah .....	179.00	160.00	160.00	180.00	160.00	160.00	145.00	130.00	130.00
Washington .....	210.00	169.00	169.00	210.00	165.00	160.00	210.00	180.00	185.00
Wisconsin .....	154.00	88.00	91.00	165.00	93.00	98.00	95.00	68.00	64.00
Wyoming .....	136.00	117.00	111.00	140.00	120.00	115.00	125.00	100.00	100.00
United States ...	156.00	142.00	142.00	180.00	150.00	150.00	122.00	127.00	129.00

## Prices Received for Apples – States and United States: December 2015 with Comparisons

[Equivalent packinghouse-door returns for California, Michigan, New York, Pennsylvania, and Washington. Prices at point of first sale for other States]

State	Apples, fresh use		
	December 2014	November 2015	December 2015
	(dollars per pound)	(dollars per pound)	(dollars per pound)
California .....	(S)	(S)	(S)
Michigan .....	0.385	0.330	0.335
New York .....	0.300	0.326	0.298
Pennsylvania .....	0.312	0.294	0.379
Virginia .....	0.270	0.250	0.250
Washington .....	0.314	0.430	0.477
United States .....	0.318	0.403	0.454

(S) Insufficient number of reports to establish an estimate.

## Prices Received for Citrus Fruits by Utilization – States and United States: December 2014

[Net pounds per box: grapefruit in California-80, Florida-85, Texas-80; lemons-80; oranges in California-80, Florida-90, Texas-85; tangelos-90; tangerines and mandarins in California-80, Florida-95]

Commodity, State, and type	FOB packed fresh	Equivalent returns					
		Packinghouse door			On-tree		
		All	Fresh	Process	All	Fresh	Process
	(dollars per box)	(dollars per box)	(dollars per box)	(dollars per box)	(dollars per box)	(dollars per box)	(dollars per box)
<b>Grapefruit</b>							
California .....	(D)	17.49	(D)	(D)	15.49	(D)	(D)
Florida, all .....	25.20	10.52	14.43	3.04	8.01	12.19	0.01
White .....	25.70	9.24	14.80	3.25	6.87	12.65	0.65
Red .....	25.20	10.68	14.40	3.00	8.15	12.15	-0.10
Texas .....	23.80	10.03	12.20	(D)	8.45	10.59	(D)
United States .....	25.00	11.16	14.57	2.67	8.92	12.49	0.03
<b>Lemons</b>							
Arizona .....	(D)	(D)	(D)	(D)	(D)	(D)	(D)
California .....	50.10	27.68	40.65	(D)	21.98	34.51	(D)
United States .....	50.30	26.82	40.83	(D)	21.15	34.69	(D)
<b>Oranges</b>							
California, all .....	31.20	19.29	21.85	(D)	16.66	19.24	(D)
Navel and miscellaneous .....	31.20	19.29	21.85	(D)	16.66	19.24	(D)
Valencia .....	(S)	(S)	(S)	(S)	(S)	(S)	(S)
Florida, all .....	30.90	10.18	19.75	9.55	7.53	17.15	6.90
Early and mids .....	30.90	10.18	19.75	9.55	7.53	17.15	6.90
Valencia .....	(S)	(S)	(S)	(S)	(S)	(S)	(S)
United States .....	31.10	12.07	21.41	9.25	9.43	18.80	6.60
<b>Tangelos</b>							
Florida .....	26.50	11.76	14.85	6.65	8.41	11.70	2.95
United States .....	26.50	11.76	14.85	6.65	8.41	11.70	2.95
<b>Tangerines and mandarins</b>							
Arizona .....	(D)	(D)	(D)	(D)	(D)	(D)	(D)
California .....	(D)	27.49	33.13	0.42	24.40	30.32	-4.02
Florida .....	41.10	20.44	27.70	7.57	16.85	24.45	3.37
United States .....	(D)	(D)	(D)	(D)	(D)	(D)	(D)

(D) Withheld to avoid disclosing data for individual operations.

(S) Insufficient number of reports to establish an estimate.



## Prices Received for Citrus Fruits by Utilization – States and United States: November 2015

[Net pounds per box: grapefruit in California-80, Florida-85, Texas-80; lemons-80; oranges in California-80, Florida-90, Texas-85; tangelos-90; tangerines and mandarins in California-80, Florida-95]

Commodity, State, and type	FOB packed fresh	Equivalent returns					
		Packinghouse door			On-tree		
		All	Fresh	Process	All	Fresh	Process
	(dollars per box)	(dollars per box)	(dollars per box)	(dollars per box)	(dollars per box)	(dollars per box)	(dollars per box)
<b>Grapefruit</b>							
California .....	(D)	16.43	(D)	(D)	13.91	(D)	(D)
Florida, all .....	29.70	15.72	18.86	5.77	13.29	16.62	2.74
White .....	34.20	18.26	23.30	5.90	15.98	21.15	3.30
Red .....	29.10	15.37	18.30	5.75	12.92	16.05	2.65
Texas .....	31.50	15.29	19.90	(D)	13.72	18.29	(D)
United States .....	29.90	15.65	19.14	4.48	13.42	17.05	1.82
<b>Lemons</b>							
Arizona .....	(D)	(D)	(D)	(D)	(D)	(D)	(D)
California .....	55.90	36.50	46.26	(D)	30.54	40.00	(D)
United States .....	56.20	36.41	46.53	(D)	30.46	40.27	(D)
<b>Oranges</b>							
California, all .....	33.40	21.33	23.86	(D)	18.65	21.20	(D)
Navel and miscellaneous .....	33.40	21.33	23.86	(D)	18.65	21.20	(D)
Valencia .....	(S)	(S)	(S)	(S)	(S)	(S)	(S)
Florida, all .....	34.60	16.24	23.45	7.25	13.62	20.85	4.60
Early and mids .....	34.60	16.24	23.45	7.25	13.62	20.85	4.60
Valencia .....	(S)	(S)	(S)	(S)	(S)	(S)	(S)
Texas, all .....	32.40	18.20	20.80	(D)	16.40	18.97	(D)
Early and mids .....	32.40	18.20	20.80	(D)	16.40	18.97	(D)
Valencia .....	(S)	(S)	(S)	(S)	(S)	(S)	(S)
United States .....	33.50	20.19	23.68	(D)	17.56	21.06	0.88
<b>Tangelos</b>							
Florida .....	31.90	15.51	20.25	5.15	12.19	17.10	1.45
United States .....	31.90	15.51	20.25	5.15	12.19	17.10	1.45
<b>Tangerines and mandarins</b>							
California .....	(D)	(D)	(D)	(D)	(D)	(D)	(D)
Florida .....	50.40	22.24	37.00	6.60	18.53	33.75	2.40
United States .....	(D)	(D)	(D)	(D)	(D)	(D)	(D)

(D) Withheld to avoid disclosing data for individual operations.

(S) Insufficient number of reports to establish an estimate.

## Prices Received for Citrus Fruits by Utilization – States and United States: December 2015

[Net pounds per box: grapefruit in California-80, Florida-85, Texas-80; lemons-80; oranges in California-80, Florida-90, Texas-85; tangelos-90; tangerines and mandarins in California-80, Florida-95]

Commodity, State, and type	FOB packed fresh	Equivalent returns					
		Packinghouse door			On-tree		
		All	Fresh	Process	All	Fresh	Process
	(dollars per box)	(dollars per box)	(dollars per box)	(dollars per box)	(dollars per box)	(dollars per box)	(dollars per box)
<b>Grapefruit</b>							
California .....	(D)	19.17	(D)	(D)	16.73	(D)	(D)
Florida, all .....	28.10	13.20	17.26	7.09	10.66	15.02	4.11
White .....	31.00	12.86	20.10	6.75	10.47	17.95	4.15
Red .....	27.60	13.27	16.80	7.20	10.71	14.55	4.10
Texas .....	27.10	10.96	15.50	(D)	9.40	13.89	(D)
United States .....	27.80	13.01	17.19	5.29	10.79	15.14	2.74
<b>Lemons</b>							
Arizona .....	(D)	(D)	(D)	(D)	(D)	(D)	(D)
California .....	52.30	30.57	42.66	(D)	24.71	36.40	(D)
United States .....	52.00	29.86	42.39	(D)	24.02	36.13	(D)
<b>Oranges</b>							
California, all .....	31.60	19.67	22.06	(D)	16.99	19.40	(D)
Navel and miscellaneous .....	31.60	19.67	22.06	(D)	16.99	19.40	(D)
Valencia .....	(S)	(S)	(S)	(S)	(S)	(S)	(S)
Florida, all .....	31.40	9.62	20.25	8.95	6.97	17.65	6.30
Early and mids .....	31.40	9.62	20.25	8.95	6.97	17.65	6.30
Valencia .....	(S)	(S)	(S)	(S)	(S)	(S)	(S)
Texas, all .....	30.40	14.57	18.80	(D)	12.79	16.97	(D)
Early and mids .....	30.40	14.57	18.80	(D)	12.79	16.97	(D)
Valencia .....	(S)	(S)	(S)	(S)	(S)	(S)	(S)
United States .....	31.50	12.35	21.63	8.53	9.71	19.02	5.88
<b>Tangelos</b>							
Florida .....	29.80	13.64	18.15	5.50	10.30	15.00	1.80
United States .....	29.80	13.64	18.15	5.50	10.30	15.00	1.80
<b>Tangerines and mandarins</b>							
California .....	(D)	(D)	(D)	(D)	(D)	(D)	(D)
Florida .....	51.70	27.53	38.30	6.90	23.95	35.05	2.70
United States .....	(D)	(D)	(D)	(D)	(D)	(D)	(D)

(D) Withheld to avoid disclosing data for individual operations.

(S) Insufficient number of reports to establish an estimate.

## Prices Received for Potatoes – States and United States: December 2015 with Comparisons

State	December 2014	November 2015	December 2015
	(dollars per cwt)	(dollars per cwt)	(dollars per cwt)
California, all <sup>1</sup> .....	9.20	9.90	9.85
Spring .....	(S)	(S)	(S)
Fall .....	9.20	9.90	9.85
Colorado, all <sup>1</sup> .....	9.15	9.05	8.05
Fresh <sup>2</sup> .....	10.20	10.00	9.40
Florida .....	(S)	(S)	(S)
Idaho, all <sup>1</sup> .....	6.85	6.70	6.45
Fresh <sup>2</sup> .....	(D)	6.10	5.55
Processing .....	(D)	7.20	7.30
Maine .....	(D)	(D)	(D)
Michigan .....	(D)	(D)	(D)
Minnesota .....	9.20	9.60	10.20
New York .....	(D)	(D)	(D)
North Carolina .....	(S)	(S)	(S)
North Dakota, all <sup>1</sup> .....	(D)	(D)	(D)
Fresh <sup>2</sup> .....	(D)	(D)	(D)
Processing .....	(D)	(D)	(D)
Oregon .....	7.25	7.80	8.45
Texas .....	(D)	(D)	(D)
Virginia .....	(S)	(S)	(S)
Washington, all <sup>1</sup> .....	8.40	7.50	8.10
Processing .....	(D)	7.15	7.85
Wisconsin, all <sup>1</sup> .....	9.65	9.50	8.95
Fresh <sup>2</sup> .....	9.50	9.70	9.00
Processing .....	9.80	9.35	8.90
United States, all <sup>1</sup> .....	8.63	8.20	8.54
Fresh <sup>2</sup> .....	9.40	8.62	8.88
Processing .....	8.23	7.93	8.29

(D) Withheld to avoid disclosing data for individual operations.

(S) Insufficient number of reports to establish an estimate.

<sup>1</sup> Average price of potatoes sold for all uses, including table stock, processing, seed, and livestock feed.

<sup>2</sup> Fresh market prices only. Includes table stock prices.

## Prices Received for All Milk – States and United States: December 2015 with Comparisons

[Before deduction for hauling. Includes quality, quantity, and other premiums. Excludes hauling subsidies]

State	December 2014		November 2015		December 2015	
	Price	Fat test	Price	Fat test	Price	Fat test
	(dollars per cwt)	(percent)	(dollars per cwt)	(percent)	(dollars per cwt)	(percent)
Arizona .....	19.60	3.57	17.60	3.63	16.70	3.62
California .....	17.90	3.81	16.12	3.82	15.82	3.88
Colorado .....	21.60	3.70	19.00	3.75	18.10	3.78
Florida .....	26.90	3.65	22.20	3.64	21.50	3.62
Idaho .....	19.40	3.92	17.60	3.97	16.70	4.02
Illinois .....	21.20	3.98	18.30	3.89	17.40	3.89
Indiana .....	21.20	3.82	19.00	3.84	17.50	3.85
Iowa .....	20.90	3.82	18.00	3.93	17.20	3.93
Kansas .....	20.60	3.90	18.20	3.85	16.70	3.89
Michigan .....	20.50	3.78	17.80	3.75	16.50	3.74
Minnesota .....	20.50	3.96	17.70	4.00	17.00	4.01
New Mexico .....	19.40	3.70	17.50	3.72	16.00	3.78
New York .....	22.30	3.90	20.00	3.88	18.80	3.86
Ohio .....	21.80	3.91	19.60	3.86	17.80	3.89
Oregon .....	21.70	4.09	19.80	4.12	18.80	4.14
Pennsylvania .....	22.60	3.86	20.30	3.85	19.20	3.85
South Dakota .....	21.20	4.08	19.00	4.16	18.20	4.18
Texas .....	20.70	4.00	19.10	4.04	17.80	4.08
Utah .....	21.50	3.84	18.40	3.95	17.80	4.00
Vermont .....	22.80	3.93	20.10	3.89	19.00	3.86
Virginia .....	25.00	3.81	21.40	3.81	20.20	3.79
Washington .....	21.30	4.09	19.40	4.12	18.30	4.14
Wisconsin .....	20.70	3.85	18.20	3.85	17.20	3.85
United States .....	20.40	3.86	18.20	3.87	17.20	3.89

## Prices Received for Milk Cows – States and United States: January 2016 with Comparisons

[Animals sold for dairy herd replacement only. Quarterly United States milk cow prices are based on revised milk cow inventory]

State	January 2015	October 2015	January 2016
	(dollars per head)	(dollars per head)	(dollars per head)
Arizona .....	2,000.00	2,100.00	1,900.00
California .....	1,800.00	2,100.00	1,800.00
Colorado .....	2,100.00	2,000.00	1,900.00
Florida .....	2,170.00	2,030.00	1,800.00
Idaho .....	2,000.00	2,050.00	1,850.00
Illinois .....	2,100.00	1,900.00	1,850.00
Indiana .....	2,100.00	1,900.00	1,800.00
Iowa .....	2,030.00	1,980.00	1,860.00
Kansas .....	2,100.00	1,900.00	1,830.00
Michigan .....	2,200.00	2,100.00	2,000.00
Minnesota .....	1,870.00	1,820.00	1,730.00
New Mexico .....	2,000.00	1,900.00	1,900.00
New York .....	1,910.00	1,750.00	1,700.00
Ohio .....	2,000.00	1,800.00	1,750.00
Oregon .....	2,000.00	1,950.00	1,850.00
Pennsylvania .....	2,000.00	1,820.00	1,780.00
South Dakota .....	1,980.00	1,850.00	1,700.00
Texas .....	2,100.00	2,000.00	1,850.00
Utah .....	1,900.00	1,900.00	1,700.00
Vermont .....	1,980.00	1,870.00	1,830.00
Virginia .....	2,060.00	1,880.00	1,770.00
Washington .....	1,950.00	1,950.00	1,800.00
Wisconsin .....	2,160.00	2,050.00	1,910.00
United States .....	1,990.00	1,980.00	1,830.00

## Parity Price Overview

Parity prices, based on data from January 2015, and adjusted base price data from which parity prices are computed are presented in the tables on the following pages. Parity prices are computed under the provisions of Title III, Subtitle A, Section 301(a) of the Agricultural Adjustment Act of 1938 as amended by the Agricultural Acts of 1948, 1949, 1954, and 1956.

The parity prices shown in this report are based on the provisions of the amended Act. Briefly, the actual method of computation is as follows:

- a. The average of prices received by farmers for individual commodities for the 10 preceding years is calculated (for 2015, the 10-average includes the years 2005-2014). An allowance for unredeemed loans and other supplemental payments resulting from price support programs, such as the deficiency payments for grains and cotton, is included for those commodities for which applicable.
- b. This 10-year average is divided by the average of the Index of Prices Received by Farmers for the same 10 preceding calendar years, adjusted to include an allowance for unredeemed loans and other supplemental price support operations, to give an "adjusted base price".
- c. Parity prices are computed by multiplying the "adjusted base prices" by the current Parity Index (the Index of Prices Paid by Farmers, including Interest, Taxes, and Wage Rates, 1910-1914=100).

Parity prices are calculated in terms of prices received by farmers in the local markets in which they ordinarily sell. This means that the parity prices apply to the average of all classes and grades of the commodity as sold by all farmers in the United States, except as otherwise specified. Fruits and vegetables for fresh use and for processing are usually considered separate commodities and separate parity prices are calculated. The Agricultural Marketing Agreement Act of 1937 provided for parity prices for certain commodities covered by a marketing agreement or order program. Under present legislation, United States parity prices, with appropriate adjustments where needed, may be used for the purpose of this Act.

## Commodity Parity Prices and Price as Percent of Parity Price – United States: December 2015 with Comparisons

[Parity prices are computed under the provisions of Title III, Subtitle a, Section 301 (a) of the Agricultural Adjustment Act of 1938 as amended by the Agricultural Acts of 1948, 1949, and 1956. See January *Agricultural Prices* for details on adjusted base price and parity price computations. Parity data not available for blank cells. Primary source of data for livestock and milk prices is United States Department of Agriculture's Agricultural Marketing Service]

Commodity and unit	Adjusted base price	Parity price			Price as percent of parity		
		December 2014	November 2015	December 2015	December 2014	November 2015	December 2015
	(dollars)	(dollars)	(dollars)	(dollars)	(percent)	(percent)	(percent)
<b>Basic commodities</b>							
All wheat .....bushel	0.624	18.50	17.90	17.60	33	27	27
Rice .....cwt	1.34	39.60	38.40	37.90	34	32	34
Corn .....bushel	0.444	13.30	12.70	12.50	28	28	29
<b>Cotton</b>							
Upland .....pound	0.066	1.98	1.89	1.87	31	31	32
American Pima .....pound	0.136	4.11	3.90	3.84	42	40	40
Peanuts .....pound	0.024	0.720	0.688	0.678	29	26	26
Small chickpeas <sup>1</sup> .....cwt	2.200	(NA)	63.10	62.20	(NA)	39	41
Large chickpeas <sup>1</sup> .....cwt	3.330	(NA)	95.50	94.10	(NA)	30	34
Lentils <sup>1</sup> .....cwt	2.280	(NA)	65.40	64.40	(NA)	49	46
<b>Designated non-basic</b>							
All milk, to plants <sup>2</sup> .....cwt	1.83	54.30	52.50	51.70	37	33	33
Honey, extracted <sup>3</sup> .....pound	0.150	4.41	4.30	4.24	48	49	50
<b>Wool and mohair</b>							
Wool .....pound	0.117	3.42	3.36	3.31	42	43	44
Mohair .....pound	0.378	10.80	10.80	10.70	39	45	45
<b>Other non-basic</b>							
Apples, fresh <sup>4</sup> .....pound	0.033	1.020	0.946	0.933	31	43	49
Barley .....bushel	0.467	13.60	13.40	13.20	38	42	45
Canola .....cwt	1.880	56.10	53.90	53.10	30	28	28
Cottonseed .....ton	19.20	573.00	551.00	543.00	32	42	40
Dry edible beans .....cwt	3.25	95.90	93.20	91.80	36	29	26
Flaxseed .....bushel	1.170	34.50	33.60	33.10	33	26	26
Oats .....bushel	0.295	8.51	8.46	8.34	38	25	25
Potatoes .....cwt	0.846	25.00	24.30	23.90	35	34	36
Sorghum grain .....cwt	0.757	22.40	21.70	21.40	33	27	27
Soybeans .....bushel	1.080	31.80	31.00	30.50	32	28	29
Sunflower, all .....cwt	2.13	63.60	61.10	60.20	31	30	32
<b>Citrus (equivalent on-tree)</b>							
Grapefruit .....box	0.777	21.70	22.30	22.00	41	60	49
Lemons .....box	1.49	40.80	42.70	42.10	52	71	57
Oranges .....box	0.806	23.10	23.10	22.80	41	76	43
Tangerines .....box	1.75	48.30	50.20	49.50	48	32	30
<b>Livestock and poultry</b>							
Beef cattle .....cwt	10.80	312.00	310.00	305.00	53	42	40
Calves .....cwt	15.30	429.00	439.00	432.00	71	49	45
Hogs .....cwt	5.81	173.00	167.00	164.00	37	27	26
Eggs <sup>1</sup> .....dozen	0.094	2.76	2.70	2.66	55	64	40
Turkeys, live .....pound	0.061	1.800	1.750	1.720	41	53	52

(NA) Not available.

<sup>1</sup> Parity prices began January 2015.

<sup>2</sup> Seasonally adjusted price as percentage of parity price.

<sup>3</sup> Wholesale extracted. Adjusted base price derived from state annual averages prices weighted by production. For 1982 through 1985 the national averages are the support prices.

<sup>4</sup> Equivalent packinghouse-door returns for California, New York, Oregon, and Washington. Price at point of first sale for other states.

## Commodity Parity Prices – United States: December 2015 with Comparisons

[Parity prices are computed under the provisions of Title III, Subtitle a, Section 301 (a) of the Agricultural Adjustment Act of 1938 as amended by the Agricultural Acts of 1948, 1949, and 1956. See January *Agricultural Prices* for details on adjusted base price and parity price computations]

Commodity and unit	Adjusted base price	Parity price			
		December 2014	November 2015	December 2015	
	(dollars)	(dollars)	(dollars)	(dollars)	
<b>Field crops and miscellaneous</b>					
Hops .....	pound	0.325	9.53	9.32	9.18
Mustard seed .....	cwt	3.07	89.60	88.00	86.80
Rapeseed .....	cwt	2.43	68.70	69.70	68.70
Rye .....	bushel	0.614	17.40	17.60	17.40
Safflower .....	cwt	2.16	62.70	61.90	61.00
Spearmint oil .....	pound	1.64	48.00	47.00	46.30
Sweet potatoes .....	cwt	2.08	62.70	59.70	58.80
<b>Tobacco</b>					
Flue-cured, 11-14 .....	pound	0.181	5.55	5.19	5.12
Fire-cured, 21-23 .....	pound	0.259	7.97	7.43	7.32
Burley, 31 .....	pound	0.181	5.61	5.19	5.12
Maryland, 32 .....	pound	0.171	5.07	4.90	4.83
Dark air-cured, 35-37 .....	pound	0.234	7.20	6.71	6.61
Pennsylvania seedleaf, 41 .....	pound	0.181	5.46	5.19	5.12
Cigar binder, 51 .....	pound	0.632	19.00	18.10	17.90
<b>Non-citrus fruit</b>					
Apples, processing <sup>1 2</sup> .....	ton	18.10	543.00	519.00	512.00
Apricots					
Fresh <sup>3</sup> .....	ton	119.00	3,480.00	3,410.00	3,360.00
Dried (California) .....	ton	257.00	7,850.00	7,370.00	7,260.00
Avocados <sup>2 3</sup> .....	ton	183.00	5,550.00	5,250.00	5,170.00
Cherries					
Sweet .....	ton	215.00	6,480.00	6,170.00	6,080.00
Tart <sup>2</sup> .....	pound	0.033	0.989	0.946	0.933
Cranberry <sup>2 4</sup> .....	barrel	4.44	138.00	127.00	125.00
Dates (California) <sup>3</sup> .....	ton	152.00	4,860.00	4,360.00	4,300.00
Grapes (California)					
Raisin variety <sup>5</sup> .....	ton	144.00	4,260.00	4,130.00	4,070.00
Wine, processing .....	ton	66.60	(NA)	1,910.00	1,880.00
Kiwifruit <sup>2</sup> .....	ton	90.00	2,680.00	2,580.00	2,540.00
Nectarines, fresh (California) <sup>3</sup> .....	ton	60.90	1,720.00	1,750.00	1,720.00
Olives, canning (California) <sup>4</sup> .....	ton	95.60	2,810.00	2,740.00	2,700.00

See footnote(s) at end of table.

--continued

## Commodity Parity Prices – United States: December 2015 with Comparisons (continued)

[Parity prices are computed under the provisions of Title III, Subtitle a, Section 301 (a) of the Agricultural Adjustment Act of 1938 as amended by the Agricultural Acts of 1948, 1949, and 1956. See January *Agricultural Prices* for details on adjusted base price and parity price computations]

Commodity and unit	Adjusted base price	Parity price		
		December 2014	November 2015	December 2015
	(dollars)	(dollars)	(dollars)	(dollars)
<b>Non-citrus fruit - continued</b>				
Papayas (Hawaii) .....pound	0.041	1.26	1.18	1.16
Peaches				
Fresh <sup>4 6</sup> ..... ton	87.00	2,500.00	2,500.00	2,460.00
Dried (California) <sup>1 5</sup> ..... ton	46.50	1,430.00	1,330.00	1,310.00
Processing, excludes dried				
Clingstone (California) <sup>4</sup> ..... ton	33.50	989.00	961.00	947.00
Pears, Fresh <sup>6</sup> ..... ton	57.70	1,710.00	1,650.00	1,630.00
Plums (California) equivalent on-tree				
Fresh <sup>7</sup> ..... ton	62.30	1,800.00	1,790.00	1,760.00
Prunes, dried (California) <sup>1 2 5</sup> ..... ton	157.00	4,560.00	4,500.00	4,440.00
Prunes and plums				
Fresh, excludes California <sup>7</sup> ..... ton	62.90	1,880.00	1,800.00	1,780.00
Processing, excludes dried <sup>1</sup> ..... ton	23.90	735.00	685.00	675.00
Strawberries				
Fresh <sup>10</sup> .....pound	9.040	264.00	259.00	255.00
Processing .....pound	3.38	98.40	96.90	95.50
Sugar crops				
Sugar beets <sup>2 8</sup> ..... ton	5.34	163.00	153.00	151.00
Sugarcane <sup>2 8</sup> ..... ton	3.55	106.00	102.00	100.00
<b>Tree nuts <sup>9</sup></b>				
Almonds .....pound	0.236	6.81	6.77	6.67
Hazelnuts ..... ton	222.00	6,240.00	6,370.00	6,270.00
Pistachios .....pound	0.227	6.24	6.51	6.42
Walnuts ..... ton	223.00	6,090.00	6,400.00	6,300.00
<b>Vegetables, fresh <sup>10</sup></b>				
Carrots <sup>11</sup> ..... cwt	2.63	79.80	75.40	74.30
Cauliflower <sup>11</sup> ..... cwt	4.17	123.00	120.00	118.00
Celery <sup>11</sup> ..... cwt	1.99	61.50	57.10	56.20
Honeydew melons ..... cwt	1.98	59.10	56.80	56.00
Lettuce ..... cwt	2.17	64.80	62.20	61.30
Onions <sup>11</sup> ..... cwt	1.41	40.20	40.40	39.80
Tomatoes ..... cwt	4.21	130.00	121.00	119.00

(NA) Not available.

<sup>1</sup> Equivalent returns at processing plant door.

<sup>2</sup> Adjusted base price is carried forward from the previous year since current marketing year average price is not yet available.

<sup>3</sup> Equivalent returns at packinghouse door.

<sup>4</sup> Equivalent returns for bulk fruit at first delivery point.

<sup>5</sup> Dried basis.

<sup>6</sup> Equivalent packinghouse-door returns for California, New York (apples only), Oregon (except peaches), and Washington. Price at point of first sale for other states.

<sup>7</sup> Based on "as sold" prices for fresh fruit in all states.

<sup>8</sup> Relates to prices including average conditional payments per ton made under the sugar acts of 1937 and 1948. Crop deficiency and abandonment payments not included.

<sup>9</sup> Prices In-Shell basis except almonds which are shelled basis.

<sup>10</sup> FOB shipping point price.

<sup>11</sup> Includes some processing.



## Marketing Year for Specified Commodities

**Rice:** August 1 to July 31 for United States; July 1 to June 30 for Louisiana and Texas; August 1 to July 31 for Arkansas and Mississippi; October 1 to September 30 for California; September 1 to August 31 for Missouri.

**Sweet Potatoes:** July - June for United States; July 1 to June 30 for Alabama and California; July 1 to May 31 for Arkansas, Louisiana, North Carolina and Texas; August 1 to July 31 for Mississippi and New Jersey; and January 1 to December 31 for Florida.

## Sweet Potato Market Year Average Prices Received – States and United States: Marketing Years 2013 - 2015

State	2013	2014	2015 <sup>1</sup>
	(dollars per cwt)	(dollars per cwt)	(dollars per cwt)
Alabama .....	28.50	24.10	23.80
Arkansas .....	32.20	(D)	26.70
California .....	24.60	30.10	27.50
Florida .....	(D)	(D)	(D)
Louisiana .....	17.90	17.40	21.00
Mississippi .....	16.40	19.30	21.20
New Jersey .....	29.50	36.90	31.00
North Carolina .....	24.90	22.00	20.30
Texas .....	(D)	27.60	(D)
United States .....	24.10	23.90	23.10

(D) Withheld to avoid disclosing data for individual operations.

<sup>1</sup> Preliminary.

## Rice Market Year Average Prices Received by All and Length of Grain – States and United States: Marketing Years 2012 through 2014

State	2012	2013	2014
	(dollars per cwt)	(dollars per cwt)	(dollars per cwt)
<b>All rice</b>			
Arkansas .....	14.30	15.20	12.00
California .....	18.60	20.90	21.80
Louisiana .....	14.40	15.50	12.90
Mississippi .....	14.60	15.40	12.20
Missouri .....	14.10	15.10	11.00
Texas .....	15.20	16.40	13.80
United States <sup>1</sup> .....	15.10	16.30	13.40
<b>Long grain</b>			
United States <sup>1</sup> .....	14.50	15.40	11.90
<b>Medium and short grain</b>			
California .....	18.40	20.70	21.60
Other States <sup>1</sup> .....	14.70	15.70	14.40
United States <sup>1</sup> .....	17.40	19.20	18.30

<sup>1</sup> Based on state prices weighted by marketings for August through July.

## All Rice Prices Received and Farm Marketings – United States: Marketing Years 2013-2014 through 2015-2016

[Marketing year average (MYA) prices are weighted average prices for the United States marketing year of August through July]

Month	Prices received			Farm marketings <sup>1</sup>		
	2013-2014	2014-2015	2015-2016 <sup>2</sup>	2013-2014	2014-2015	2015-2016 <sup>2</sup>
	(dollars per cwt)	(dollars per cwt)	(dollars per cwt)	(1,000 cwt)	(1,000 cwt)	(1,000 cwt)
August .....	15.80	15.50	12.00	8,879	9,798	10,973
September .....	15.60	14.40	11.90	11,420	10,055	12,292
October .....	16.10	13.90	12.30	13,239	17,576	16,319
November .....	16.30	14.50	12.30	9,462	13,906	13,160
December .....	16.50	13.60	12.80	11,544	17,627	14,793
January <sup>3</sup> .....	17.10	15.10		19,762	17,091	
February .....	16.70	12.80		13,495	12,456	
March .....	16.40	12.60		12,694	14,560	
April .....	16.20	12.60		8,573	15,918	
May .....	16.20	12.50		7,858	13,145	
June .....	16.30	12.00		7,777	14,657	
July .....	16.10	11.60		8,013	16,542	
MYA .....	16.30	13.40		132,716	173,331	

<sup>1</sup> Purchases from producers as reported by private firms and rice (rough equivalent) shipped from producers as reported by cooperative mills.

<sup>2</sup> Prices and marketings include late reports and revised data for October 2014 - November 2015. Final monthly prices, marketings, and MYA price will be published in the January 2017 *Agricultural Prices* report.

<sup>3</sup> Second year.

## Long Grain Rice Prices Received and Farm Marketings – United States: Marketing Years 2013-2014 through 2015-2016

[Marketing year average (MYA) prices are weighted average prices for the United States marketing year of August through July]

Month	Prices received			Farm marketings <sup>1</sup>		
	2013-2014	2014-2015	2015-2016 <sup>2</sup>	2013-2014	2014-2015	2015-2016 <sup>2</sup>
	(dollars per cwt)	(dollars per cwt)	(dollars per cwt)	(1,000 cwt)	(1,000 cwt)	(1,000 cwt)
August .....	15.20	14.30	10.40	6,566	7,692	8,646
September .....	15.30	13.60	10.90	10,032	8,490	10,141
October .....	15.40	12.90	11.50	10,856	14,328	12,730
November .....	15.40	12.50	11.50	6,873	9,509	10,267
December .....	15.50	12.50	11.40	8,144	13,776	10,432
January <sup>3</sup> .....	15.50	12.50		12,223	11,456	
February .....	15.50	11.80		9,794	10,047	
March .....	15.50	11.40		9,729	11,772	
April .....	15.60	11.10		6,983	12,163	
May .....	15.50	10.90		6,218	9,945	
June .....	15.60	10.40		6,356	11,417	
July .....	15.40	9.95		6,691	12,964	
MYA .....	15.40	11.90		100,465	133,559	

<sup>1</sup> Purchases from producers as reported by private firms and rice (rough equivalent) shipped from producers as reported by cooperative mills.

<sup>2</sup> Prices and marketings include late reports and revised data for October 2014 - November 2015. Final monthly prices, marketings, and MYA price will be published in the January 2017 *Agricultural Prices* report.

<sup>3</sup> Second year.

## Medium and Short Grain Rice Prices Received and Farm Marketings – United States: Marketing Years 2013-2014 through 2015-2016

[Marketing year average (MYA) prices are weighted average prices for the United States marketing year of August through July]

Month	Prices received			Farm marketings <sup>1</sup>		
	2013-2014	2014-2015	2015-2016 <sup>2</sup>	2013-2014	2014-2015	2015-2016 <sup>2</sup>
	(dollars per cwt)	(dollars per cwt)	(dollars per cwt)	(1,000 cwt)	(1,000 cwt)	(1,000 cwt)
August .....	17.40	20.20	18.20	2,313	2,106	2,327
September .....	17.80	18.60	16.60	1,388	1,565	2,151
October .....	19.50	18.30	14.90	2,383	3,248	3,589
November .....	18.90	18.80	15.50	2,589	4,397	2,893
December .....	18.90	17.90	16.20	3,400	3,851	4,361
January <sup>3</sup> .....	19.80	20.40		7,539	5,635	
February .....	19.60	17.10		3,701	2,409	
March .....	19.30	17.60		2,965	2,788	
April .....	18.50	17.30		1,590	3,755	
May .....	18.70	17.50		1,640	3,200	
June .....	19.70	17.70		1,421	3,240	
July .....	19.90	17.40		1,322	3,578	
MYA .....	19.20	18.30		32,251	39,772	

<sup>1</sup> Purchases from producers as reported by private firms and rice (rough equivalent) shipped from producers as reported by cooperative mills.

<sup>2</sup> Prices and marketings include late reports and revised data for October 2014 - November 2015. Final monthly prices, marketings, and MYA price will be published in the January 2017 *Agricultural Prices* report.

<sup>3</sup> Second year.

## Medium and Short Grain Rice Prices Received – California and Other States: Marketing Years 2014-2015 through 2015-2016

[Marketing year for California: October - September. Marketing Year for Other States: August - July. Other States include Arkansas, Louisiana, Mississippi, Missouri, and Texas]

Month	California		Other States	
	2014-2015	2015-2016 <sup>1</sup>	2014-2015	2015-2016 <sup>1</sup>
	(dollars per cwt)	(dollars per cwt)	(dollars per cwt)	(dollars per cwt)
August .....	(NA)	20.80	15.60	12.90
September .....	(NA)	20.50	15.30	12.20
October .....	21.60	20.20	14.80	12.10
November .....	22.50	18.60	14.90	11.90
December .....	21.30	18.90	15.00	11.80
January <sup>2</sup> .....	23.20		14.90	
February .....	21.10		14.40	
March .....	21.10		14.70	
April .....	20.80		14.30	
May .....	21.40		13.80	
June .....	21.00		13.30	
July .....	21.30		12.90	
August .....	20.80		12.90	
September .....	20.50		12.20	
MYA .....	21.60		14.40	

(NA) Not available.

<sup>1</sup> Prices and marketings include late reports and revised data for August 2015 - November 2015. Final monthly prices, marketings, and MYA price for California will be published in the January 2017 *Agricultural Prices* report.

<sup>2</sup> Second year.

## Prices Received Indexes as a Percent of 2011 Base, Monthly and Annual Average – United States: 2011-2015

[Revised historical price indexes for months not shown are available at [www.nass.usda.gov](http://www.nass.usda.gov)]

Year	Agricultural production												
	January	February	March	April	May	June	July	August	September	October	November	December	Annual <sup>1</sup>
2011 ...	91	98	100	102	101	102	102	104	100	98	101	102	100
2012 ...	100	101	103	102	102	102	105	107	107	109	111	108	105
2013 ...	111	109	110	108	110	110	107	106	103	100	99	101	107
2014 ...	99	107	112	115	115	113	110	109	107	100	102	101	108
2015 ...	97	99	102	103	107	105	99	102	98	89	92	90	99
Year	Crop production												
	January	February	March	April	May	June	July	August	September	October	November	December	Annual <sup>1</sup>
2011 ...	91	101	99	102	103	102	102	103	99	96	99	102	100
2012 ...	99	100	102	104	105	104	110	112	110	111	112	108	107
2013 ...	112	111	112	108	109	110	107	105	100	95	91	92	106
2014 ...	91	94	96	100	100	99	93	91	87	81	82	83	92
2015 ...	82	84	86	89	90	88	86	88	87	80	82	84	86
Year	Grain and oilseed												
	January	February	March	April	May	June	July	August	September	October	November	December	Annual <sup>1</sup>
2011 ...	87	97	96	105	105	103	101	108	102	96	97	102	100
2012 ...	99	102	105	107	106	104	115	122	114	113	115	114	110
2013 ...	115	116	116	114	115	113	108	103	96	90	84	86	105
2014 ...	86	86	88	92	91	88	81	76	72	71	69	72	82
2015 ...	74	73	72	71	69	69	71	69	67	67	65	66	70
Year	Food grain												
	January	February	March	April	May	June	July	August	September	October	November	December	Annual <sup>1</sup>
2011 ...	92	98	98	103	103	98	95	102	101	104	104	101	100
2012 ...	100	99	101	100	95	92	106	108	110	111	113	111	104
2013 ...	110	108	107	106	106	101	95	95	97	101	101	98	101
2014 ...	98	97	99	99	102	90	85	83	82	83	88	87	90
2015 ...	90	84	82	81	79	75	71	68	69	73	73	71	75
Year	Feed grain												
	January	February	March	April	May	June	July	August	September	October	November	December	Annual <sup>1</sup>
2011 ...	82	93	92	105	104	105	104	113	106	95	97	103	100
2012 ...	101	104	105	105	105	106	118	126	115	113	117	114	111
2013 ...	116	117	119	116	116	116	112	103	90	77	73	74	102
2014 ...	74	73	76	79	79	75	69	63	59	60	60	64	69
2015 ...	64	64	64	63	61	61	64	65	63	62	60	62	63
Year	Oilseed												
	January	February	March	April	May	June	July	August	September	October	November	December	Annual <sup>1</sup>
2011 ...	92	100	101	104	104	104	104	105	97	94	94	100	100
2012 ...	96	99	105	111	113	112	123	127	115	114	114	114	112
2013 ...	114	116	116	114	118	119	120	110	105	100	100	103	112
2014 ...	102	104	108	113	113	111	103	97	87	80	81	82	99
2015 ...	82	79	79	78	77	77	80	78	72	70	69	70	76
Year	Fruit and tree nut												
	January	February	March	April	May	June	July	August	September	October	November	December	Annual <sup>1</sup>
2011 ...	103	93	95	96	99	98	104	104	100	100	102	106	100
2012 ...	106	101	104	107	109	112	108	114	120	126	126	115	112
2013 ...	107	106	107	101	109	115	112	120	123	126	127	123	119
2014 ...	128	131	130	127	129	138	136	132	132	133	136	123	134
2015 ...	123	122	126	126	133	131	122	128	129	131	138	133	131

See footnote(s) at end of table.

--continued

**Prices Received Indexes as a Percent of 2011 Base, Monthly and Annual Average – United States: 2011-2015 (continued)**

[Revised historical price indexes for months not shown are available at [www.nass.usda.gov](http://www.nass.usda.gov)]

Year	Vegetables & melons												
	January	February	March	April	May	June	July	August	September	October	November	December	Annual <sup>1</sup>
2011 ...	106	135	123	101	104	103	101	82	81	77	96	91	100
2012 ...	79	77	83	91	98	99	95	93	93	90	101	87	92
2013 ...	126	109	114	99	97	98	104	105	91	99	96	94	104
2014 ...	92	98	98	102	106	116	106	99	94	96	113	96	103
2015 ...	111	87	95	105	102	110	107	106	107	102	127	135	109
Year	Other crop												
	January	February	March	April	May	June	July	August	September	October	November	December	Annual <sup>1</sup>
2011 ...	88	92	90	95	101	101	105	106	107	107	105	103	100
2012 ...	103	106	106	107	107	104	103	102	108	102	96	96	103
2013 ...	97	101	103	102	105	109	105	102	103	97	93	93	100
2014 ...	92	92	93	96	100	104	104	97	98	92	85	83	95
2015 ...	81	80	83	85	91	92	91	85	90	84	80	81	86
Year	Food commodity												
	January	February	March	April	May	June	July	August	September	October	November	December	Annual <sup>1</sup>
2011 ...	93	99	102	102	101	101	102	102	98	98	101	101	100
2012 ...	99	100	103	101	101	101	102	104	105	109	111	109	104
2013 ...	110	108	109	107	110	109	106	107	107	107	109	109	109
2014 ...	111	117	123	126	125	123	121	121	119	112	120	115	120
2015 ...	108	107	110	111	115	113	106	110	103	95	101	97	106
Year	Livestock production												
	January	February	March	April	May	June	July	August	September	October	November	December	Annual <sup>1</sup>
2011 ...	91	95	100	103	100	101	102	104	99	101	103	101	100
2012 ...	101	102	104	99	99	99	98	101	102	105	109	109	102
2013 ...	108	106	107	107	111	109	107	106	107	109	112	112	109
2014 ...	116	121	128	131	130	128	133	130	132	135	134	127	129
2015 ...	120	114	117	116	122	121	115	117	109	104	105	97	113
Year	Meat animal												
	January	February	March	April	May	June	July	August	September	October	November	December	Annual <sup>1</sup>
2011 ...	92	95	100	105	100	97	101	102	100	104	104	100	100
2012 ...	104	106	108	104	103	105	102	102	100	103	104	104	104
2013 ...	105	104	103	104	108	107	107	107	108	110	110	108	107
2014 ...	114	119	128	131	128	129	138	137	134	140	140	134	131
2015 ...	131	125	127	127	130	127	122	123	114	109	104	96	120
Year	Cattle												
	January	February	March	April	May	June	July	August	September	October	November	December	Annual <sup>1</sup>
2011 ...	95	96	102	106	99	95	99	98	99	104	107	100	100
2012 ...	107	109	111	108	106	105	100	102	106	107	109	109	107
2013 ...	110	108	109	109	110	106	105	106	109	113	115	115	109
2014 ...	122	127	131	131	129	130	138	141	141	149	154	149	137
2015 ...	148	142	144	146	143	139	133	133	125	118	117	109	133
Year	Hog												
	January	February	March	April	May	June	July	August	September	October	November	December	Annual <sup>1</sup>
2011 ...	84	92	94	102	103	105	108	114	101	103	97	98	100
2012 ...	95	98	98	94	94	106	108	101	84	93	92	94	97
2013 ...	96	97	89	93	103	112	114	112	106	103	96	92	101
2014 ...	92	98	123	134	125	128	140	125	114	116	100	97	116
2015 ...	86	76	76	74	89	90	88	89	82	83	69	64	80

See footnote(s) at end of table.

--continued

**Prices Received Indexes as a Percent of 2011 Base, Monthly and Annual Average – United States: 2011-2015 (continued)**

[Revised historical price indexes for months not shown are available at [www.nass.usda.gov](http://www.nass.usda.gov)]

Year	Dairy												Annual <sup>1</sup>
	January	February	March	April	May	June	July	August	September	October	November	December	
2011 ...	83	95	101	97	97	105	108	110	105	99	102	98	100
2012 ...	94	88	86	84	81	81	84	91	98	107	110	103	92
2013 ...	100	97	95	97	98	97	95	98	100	104	107	109	100
2014 ...	117	123	125	126	120	115	116	120	128	124	114	101	119
2015 ...	88	84	83	82	83	84	83	83	87	88	91	86	85

Year	Poultry												Annual <sup>1</sup>
	January	February	March	April	May	June	July	August	September	October	November	December	
2011 ...	93	93	99	104	102	103	100	105	96	97	103	106	100
2012 ...	99	105	116	105	107	106	103	107	109	107	120	122	109
2013 ...	124	123	132	127	136	129	122	114	115	113	122	124	123
2014 ...	119	122	134	139	145	139	136	124	133	134	139	137	133
2015 ...	127	119	133	129	146	149	131	136	120	108	123	111	128

<sup>1</sup> Weighted index using monthly commodity market shares.

**Prices Received Indexes as a Percent of 1910-1914 Base, Monthly and Annual Average – United States: 2011-2015**

[Revised historical price indexes for months not shown are available at [www.nass.usda.gov](http://www.nass.usda.gov)]

Year	Agricultural production												Annual <sup>1</sup>
	January	February	March	April	May	June	July	August	September	October	November	December	
2011 ...	941	1009	1031	1056	1047	1048	1054	1070	1027	1011	1040	1049	1032
2012 ...	1027	1039	1065	1049	1049	1051	1079	1103	1099	1123	1146	1119	1083
2013 ...	1141	1121	1132	1111	1138	1131	1105	1090	1067	1030	1022	1037	1104
2014 ...	1025	1099	1152	1191	1186	1163	1133	1128	1106	1029	1050	1039	1112
2015 ...	1004	1023	1054	1068	1104	1080	1024	1056	1006	918	950	928	1017

Year	Crop production												Annual <sup>1</sup>
	January	February	March	April	May	June	July	August	September	October	November	December	
2011 ...	798	878	867	887	897	892	891	900	868	839	862	888	872
2012 ...	862	870	891	907	912	907	956	981	962	967	979	946	933
2013 ...	978	966	978	943	953	960	934	916	874	826	791	804	922
2014 ...	790	821	835	870	875	866	813	796	761	708	713	720	802
2015 ...	719	734	746	774	785	769	750	768	759	696	717	734	747

Year	Livestock production												Annual <sup>1</sup>
	January	February	March	April	May	June	July	August	September	October	November	December	
2011 ...	1052	1099	1164	1194	1161	1168	1183	1209	1155	1170	1199	1178	1161
2012 ...	1169	1181	1212	1153	1147	1154	1140	1170	1184	1221	1269	1261	1190
2013 ...	1254	1234	1244	1244	1291	1268	1243	1235	1245	1266	1296	1299	1260
2014 ...	1343	1402	1492	1526	1505	1486	1539	1515	1537	1571	1554	1475	1495
2015 ...	1399	1322	1362	1352	1414	1405	1337	1359	1269	1211	1222	1127	1317

<sup>1</sup> Weighted index using monthly commodity market shares.

## Reliability of Prices Received Estimates

**Definition:** Prices received represent sales from producers to first buyers. They include all grades and qualities. The average commodity price from the survey multiplied by the total quantity marketed theoretically should give the total cash receipts for the commodity.

**Survey procedures:** Primary sales data used to determine grain prices were obtained from probability samples of about 1,900 mills and elevators. These procedures ensure that virtually all grain moving into commercial channels has a chance of being included in the survey. Generally, States surveyed account for 90 percent or more of total United States production. Livestock prices are obtained from packers, stockyards, auctions, dealers, and market check data from AMS-USDA, private marketing organizations, and state commodity groups and agencies. Inter-farm sales of grain and livestock are not included since they represent very small percentages of the total sales. Grain marketed for seed is also excluded. Fruit and vegetable prices are obtained from sample surveys and market check data from AMS-USDA, private marketing organizations, state agencies, and universities.

**Summary and estimation procedures:** Survey quantities sold are expanded by strata to state levels and used to weight average strata prices to a state average. State prices are then weighted to a United States price based on expanded sales. Recommendations are prepared by the Regional Field Offices and reviewed by the Agricultural Statistics Board in Washington, D.C. State recommendations are reviewed for reasonableness with survey data, other States, and recent historic estimates.

**Revisions:** In general, revisions are made during annual commodity market year estimation time, following five-year Census revisions, or when later information is received. Revisions are published in monthly issues of *Agricultural Prices*.

**Reliability:** United States price estimates based on probability surveys generally have a sampling error of less than one percent for the major commodities such as corn, wheat, soybeans, cotton, and rice. Current methods of summarization for non-probability commodities are not designed directly to calculate sampling errors. However, analytical measures approximate the United States relative sampling errors at around five percent. Any non-sampling errors are attributed to such things as the inability to obtain correct information, differences in interpreting questions or definitions, mistakes in coding or processing the data, etc. Efforts are made at each step in the survey process to minimize these non-sampling errors.

**Program Changes:** After the Council on Food, Agricultural and Resource Economics (C-FARE) 2009 program review which included changes in farm production practices, plans were implemented to make necessary program improvements in the agricultural price program. The index group structure for prices received was modified to maintain a more universal structure and consistency with the required 1910-1914 series.

Modifications implemented January 2014 include the following: update the current 1990-1992 base reference period to 2011, link the 1910-1914 series to the updated base reference period, 2011, create index groups used universally by researchers, data users, and policymakers, re-classify agricultural commodities into the index groups, expand the commodity coverage for vegetable, melon, non-citrus, and tree nuts, update monthly market weights, and adjust (normalization) current five year moving average cash receipts and farm input cost weights.

Modifications implemented January 2015 discontinued preliminary prices and replaced the annual average index with an annual index.

See Price Program Quick Stats Links at end of this report for program change details.

## December Prices Paid by Farmers

The December Index of Prices Paid for Commodities and Services, Interest, Taxes, and Farm Wage Rates (PPITW), at 104, is down 1.9 percent from November 2015 and 6.3 percent below December 2014.

**Production index:** The December index, at 104, is down 1.9 percent from November and 8.8 percent lower than last year. Lower prices for feeder cattle, concentrates, complete feeds, and diesel more than offset higher prices for nitrogen, feeder pigs, feed grains, and hay & forages.

**Feed:** At 99, the December index decreased 1.0 percent from November and is down 11 percent from last December. Since November, lower prices for concentrates, complete feeds, and supplements more than offset higher prices for feed grains and hay & forages.

**Livestock and poultry:** The December index, at 116, decreased 11 percent from November and is down 33 percent from last year. Since November, lower prices for feeder cattle more than offset higher prices for feeder pigs. The December feeder cattle price, at \$161.00 per cwt, is down \$25.00 per cwt from the November price. December feeder pigs averaged \$126.00 per cwt, up \$13.00 per cwt from November.

**Fertilizer:** The index for December, at 86, is up 1.2 percent from November but is 5.5 percent below December a year ago. Since November, higher prices for nitrogen more than offset lower prices for mixed fertilizer and potash & phosphate.

**Chemicals:** The December index, at 106, is unchanged from November but is down 3.6 percent from last December.

**Fuels:** At 54, the December index is down 6.9 percent from November and 30 percent below December 2014. Compared with November, prices are lower for diesel, LP gas, and gasoline.

**Machinery:** The index for December, at 116, is unchanged from November but is 2.7 percent above last December.

**Consumer price index:** The December 2015 Consumer Price Index, as issued by the Bureau of Labor Statistics, for all urban consumers (CPI-U) decreased 0.3 percent before seasonal adjustment to a level of 236.525 (1982-1984=100). The November index is 237.336. For the 12 month period ending in December, the overall index increased 0.7 percent.



## Prices Paid Indexes and Related Parity Ratios – United States: December 2015 with Comparisons

[Revised historical price indexes for months not shown are available at [www.nass.usda.gov](http://www.nass.usda.gov)]

Index Group and Ratios	1910-1914 Base			2011 Base		
	December 2014	November 2015	December 2015	December 2014	November 2015	December 2015
	(percent)	(percent)	(percent)	(percent)	(percent)	(percent)
Prices paid by farmers for commodities, services, interest, taxes, and wage rates (PPITW) .....	3011	2868	2826	111	106	104
Production .....	2365	2197	2155	114	106	104
Feed .....	1224	1104	1087	111	100	99
Livestock and poultry .....	3405	2563	2288	172	130	116
Seeds .....	3746	3755	3755	114	114	114
Fertilizer .....	1093	1026	1038	91	85	86
Chemicals .....	983	952	954	110	106	106
Fuels .....	2162	1627	1516	77	58	54
Supplies and repairs .....	1252	1243	1243	106	105	105
Autos and trucks .....	3224	3243	3242	105	106	105
Machinery .....	6913	7116	7116	113	116	116
Building materials .....	2497	2488	2487	107	107	107
Services and rent .....	2306	2355	2352	(NA)	(NA)	(NA)
Services .....	(NA)	(NA)	(NA)	109	111	111
Rent .....	(NA)	(NA)	(NA)	108	110	110
Interest <sup>1</sup> .....	3504	3539	3539	96	97	97
Taxes <sup>2</sup> .....	6233	6376	6376	105	107	107
Wage rates .....	7756	8204	8204	108	115	115
Production, interest, taxes, and wage rates (PITW) .....	3169	2991	2941	112	106	104
Family living-CPI <sup>3</sup> .....	2231	2255	2247	104	106	105
Ratio (received/paid) .....	(NA)	(NA)	(NA)	91	87	87
Parity ratio <sup>4</sup> .....	35	33	33	(NA)	(NA)	(NA)
Parity ratio adjusted <sup>5</sup> .....	36	34	34	(NA)	(NA)	(NA)
PPITW adjusted for productivity <sup>6</sup> .....	1418	1416	1409	(NA)	(NA)	(NA)
Crop sector (PPITW) .....	(NA)	(NA)	(NA)	106	105	104
Livestock sector (PPITW) .....	(NA)	(NA)	(NA)	117	107	104
Farm sector (production) .....	(NA)	(NA)	(NA)	130	111	106
Non-farm sector (production) .....	(NA)	(NA)	(NA)	103	102	102

(NA) Not available.

<sup>1</sup> Interest per acre on farm real estate debt and interest rate on farm non-real estate debt.

<sup>2</sup> Farm real estate taxes payable per acre.

<sup>3</sup> Bureau of Labor Statistics, Consumer Price Index for all urban consumers (CPI-U), for the previous month converted by the USDA.

<sup>4</sup> Ratio of index of prices received to PPITW (1910-1914=100).

<sup>5</sup> Based on estimated cash receipts, from marketings and government payments, the preliminary adjustment factor is 1.026 for 2016 and the revised factor is 1.026 for 2015.

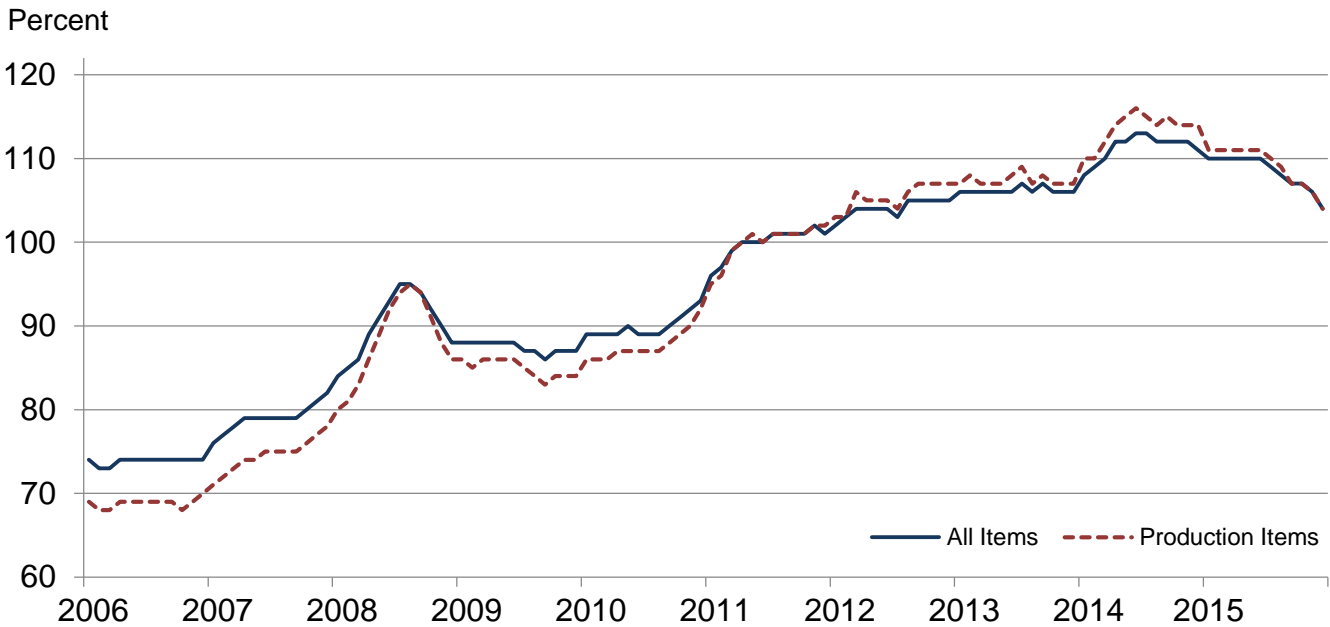
<sup>6</sup> PPITW is adjusted based on productivity trend for the prior 15 years.

## Prices Paid Indexes and Annual Weights for Input Components and Sub-components – United States: December 2015 with Comparisons

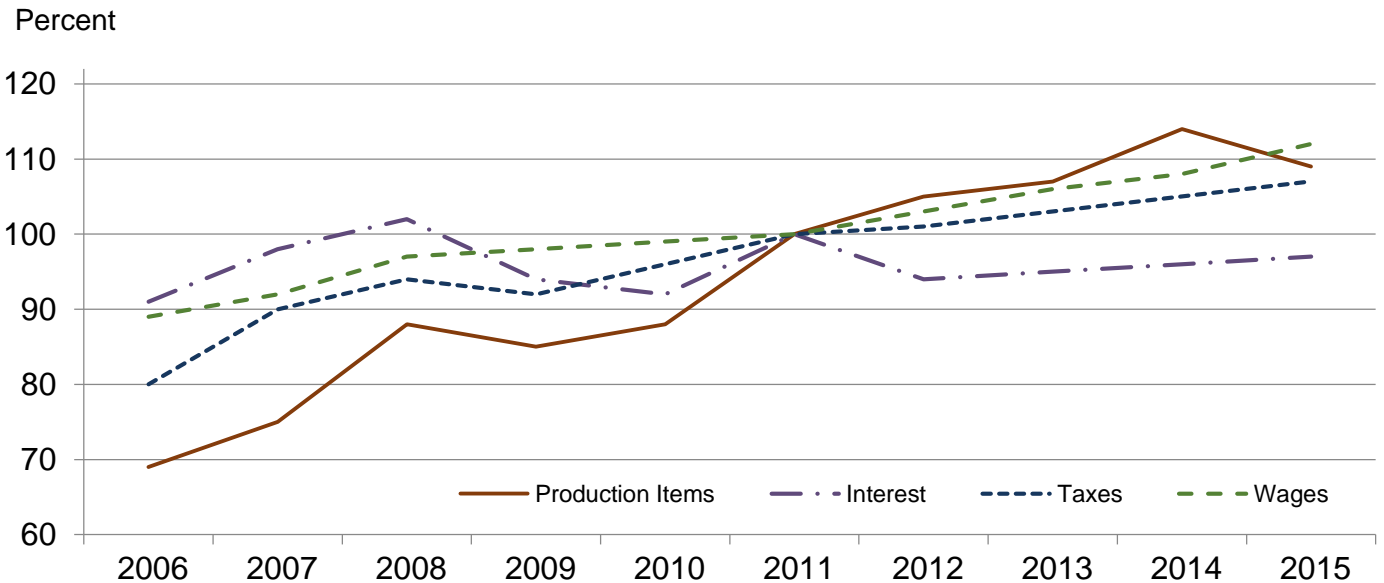
[Revised historical price indexes for months not shown are available at [www.nass.usda.gov](http://www.nass.usda.gov). Relative weights are a five year moving average]

Index Group	Relative weights		Indexes (2011=100)		
	2014	2015	December 2014	November 2015	December 2015
	(percent)	(percent)	(percent)	(percent)	(percent)
Production items .....	74.1	74.6	114	106	104
Feed .....	15.5	15.5	111	100	99
Feed grains .....	2.2	2.2	66	61	62
Complete feeds .....	7.6	7.6	116	110	108
Hay and forages .....	1.9	1.9	102	93	94
Concentrates .....	2.5	2.5	141	102	96
Supplements .....	1.3	1.3	115	117	116
Livestock and poultry .....	8.5	8.3	172	130	116
Feeder cattle .....	6.6	6.4	182	136	117
Feeder pigs .....	0.7	0.7	155	81	90
Milk cow replacements .....	0.7	0.7	149	139	139
Poultry .....	0.5	0.5	102	102	102
Seeds .....	4.9	5.0	114	114	114
Field crops .....	4.4	4.5	113	114	114
Grasses and legumes .....	0.5	0.5	123	120	120
Fertilizer .....	6.2	6.4	91	85	86
Mixed fertilizer .....	2.7	2.8	86	84	84
Nitrogen .....	2.6	2.7	96	88	91
Potash and phosphate .....	0.9	0.9	89	80	79
Chemicals .....	3.1	3.2	110	106	106
Herbicides .....	1.9	2.0	110	106	107
Insecticides .....	0.7	0.7	111	107	107
Fungicides and other .....	0.4	0.5	106	103	103
Fuels .....	4.1	4.0	77	58	54
Diesel .....	2.6	2.5	79	56	52
Gasoline .....	0.9	0.8	74	61	57
LP gas .....	0.7	0.7	75	64	58
Supplies and repairs .....	4.3	4.3	106	105	105
Supplies .....	1.4	1.4	106	106	106
Repairs .....	2.8	2.9	106	105	105
Autos and trucks .....	1.1	1.1	105	106	105
Autos .....	0.1	0.1	101	101	101
Trucks .....	1.0	1.0	105	106	106
Machinery .....	4.9	5.2	113	116	116
Tractors .....	1.1	1.1	108	110	110
Self-propelled .....	2.0	2.1	116	121	121
Other machinery .....	1.9	2.0	113	115	115
Building materials .....	3.7	3.7	107	107	107
Services .....	10.8	10.8	109	111	111
Custom rates .....	1.1	1.1	109	112	112
Other services .....	9.7	9.7	109	111	111
Rent .....	6.9	7.1	108	110	110
Cash .....	3.7	3.8	109	110	110
Share .....	3.2	3.3	108	110	110
Interest .....	2.6	2.3	96	97	97
Taxes .....	2.9	2.8	105	107	107
Wage rates .....	6.4	6.4	108	115	115
Family living-CPI .....	14.0	13.9	104	106	105

## Paid Indexes by Month, All Items and Production Items – United States: 2011=100

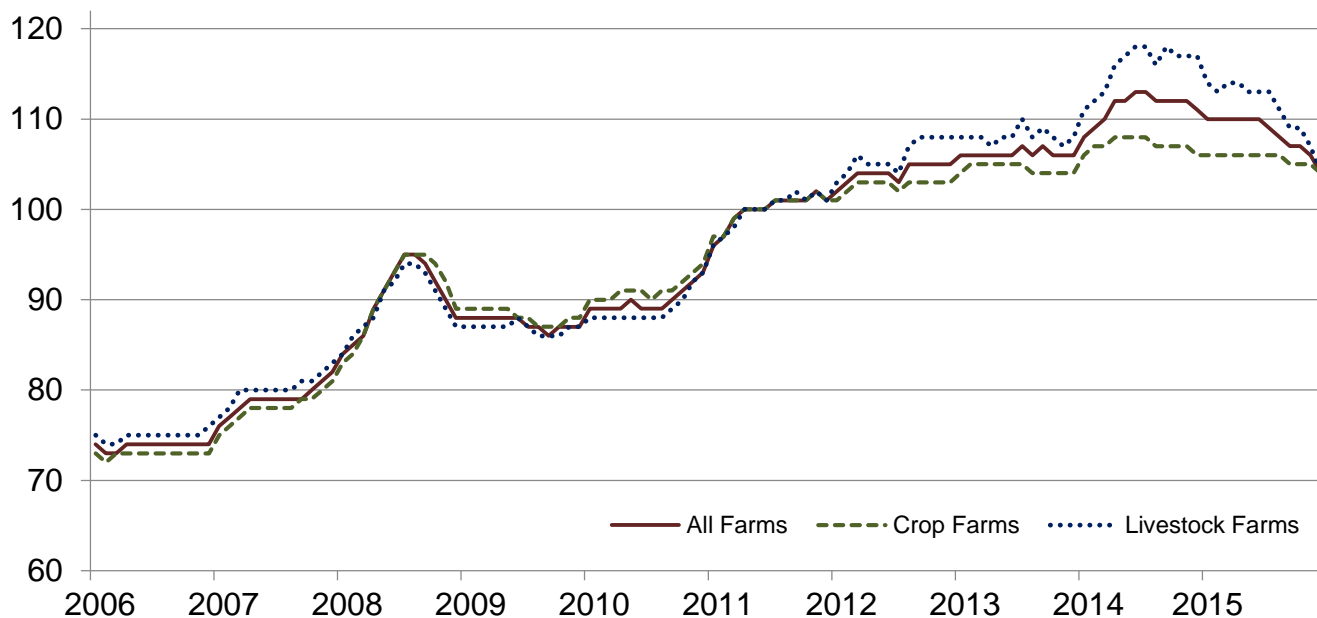


## Paid Indexes, Annual Averages, Production Items, Interest, Taxes, and Wages – United States: 2011=100



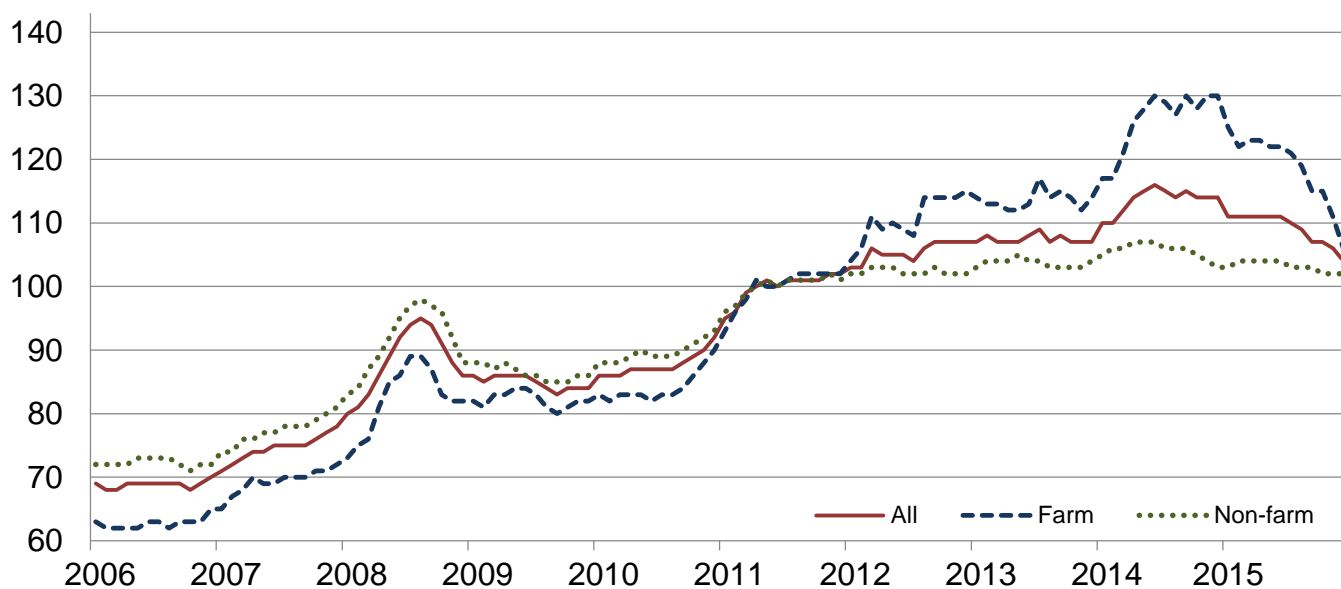
## Paid Indexes by Farm Type and Month, All Items – United States: 2011=100

Percent



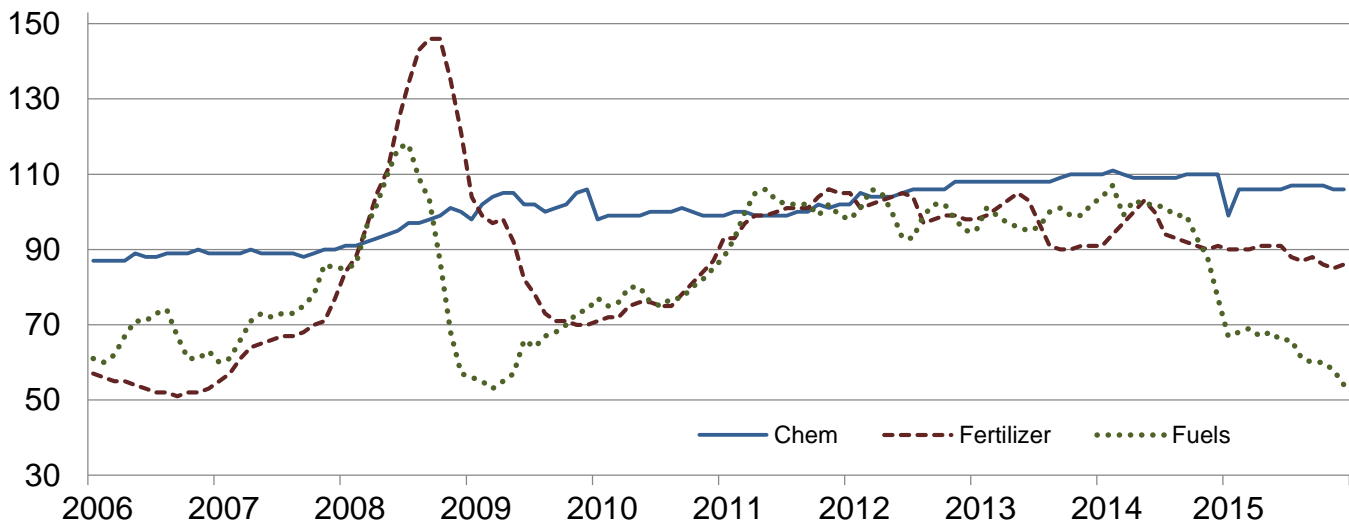
## Paid Indexes by Origin and Month, All Production Items – United States: 2011=100

Percent



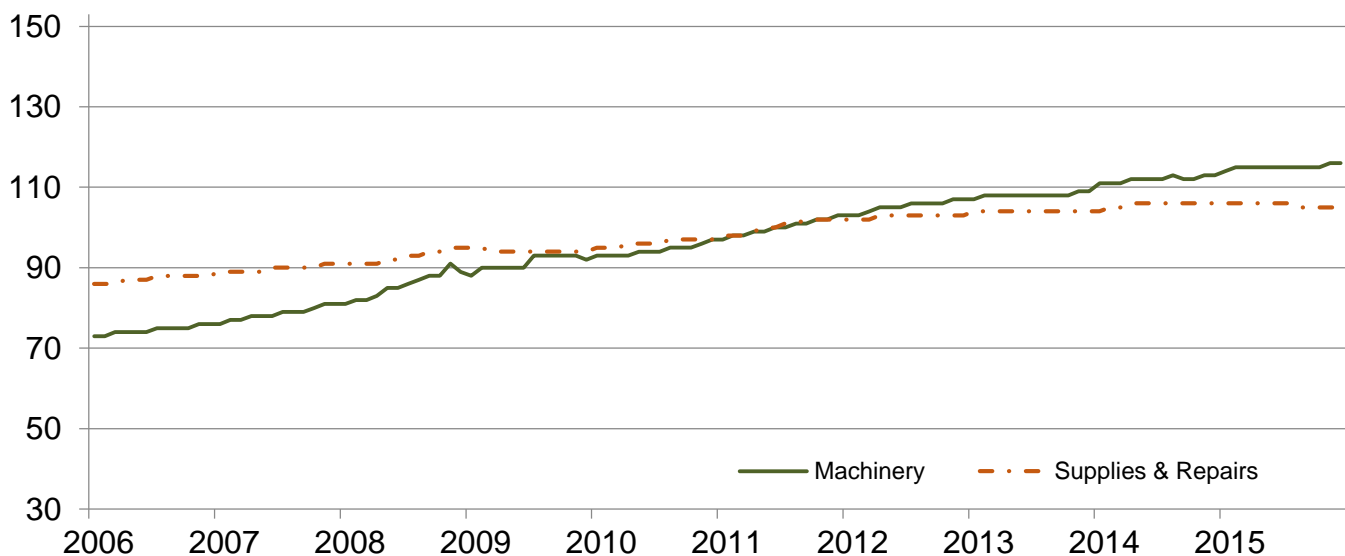
## Paid Indexes by Non-farm Origin and Month, Chemicals, Fertilizer, and Fuels – United States: 2011=100

Percent

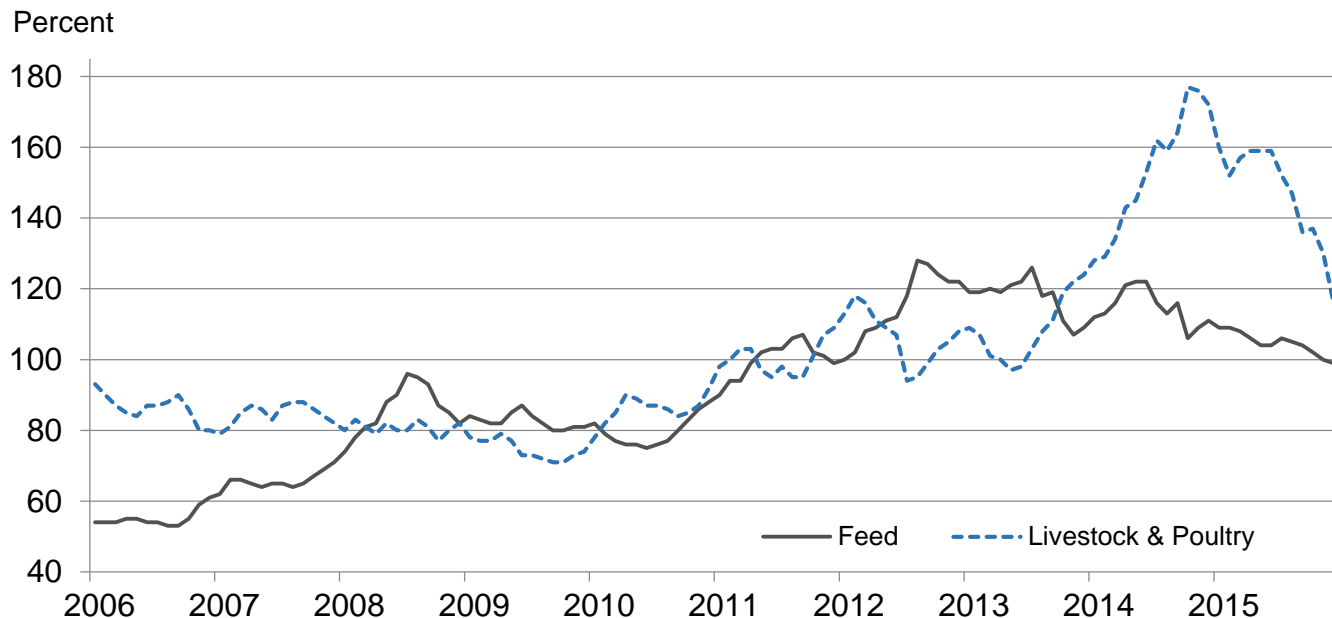


## Paid Indexes by Non-farm Origin and Month, Machinery and Supplies & Repairs – United States: 2011=100

Percent



# Paid Indexes by Farm Origin and Month, Feed and Livestock & Poultry – United States: 2011=100



## Feed Price Ratios – United States: December 2015 with Comparisons

Feed price ratio <sup>1</sup>	December 2014	November 2015	December 2015
Broiler-feed: pounds of broiler grower feed equal in value to 1 pound of broiler, live weight <sup>2</sup> .....	5.2	4.3	4.7
Market egg feed: pounds of laying feed equal in value to 1 dozen eggs <sup>3</sup> .....	17.7	22.9	12.2
Hog-corn: bushels of corn equal in value to 100 pounds of hog, live weight .....	17.0	12.8	11.7
Milk-feed: pounds of 16% mixed dairy feed equal in value to 1 pound of whole milk <sup>4</sup> .....	2.40	2.42	2.27
Steer & heifer-corn: bushels of corn equal in value to 100 pounds of steer & heifers, live weight .....	43.8	36.4	33.7
Turkey-feed: pounds of turkey grower equal in value to 1 pound of turkey, live weight <sup>5</sup> .....	7.1	10.2	9.8

<sup>1</sup> Effective January 1995, prices of commercial prepared feeds are based on current United States prices received for corn, soybeans, alfalfa hay, and all wheat.

<sup>2</sup> The price of commercial prepared broiler feed is based on current United States prices received for corn and soybeans. The modeled feed uses 58 percent corn and 42 percent soybeans.

<sup>3</sup> The price of commercial prepared layer feed is based on current United States prices received for corn and soybeans. The modeled feed uses 75 percent corn and 25 percent soybeans.

<sup>4</sup> The price of commercial prepared dairy feed is based on current United States prices received for corn, soybeans, and alfalfa. The modeled feed uses 51 percent corn, 8 percent soybeans, and 41 percent alfalfa.

<sup>5</sup> The price of commercial prepared turkey feed is based on current United States prices received for corn, soybeans, and wheat. The modeled feed uses 51 percent corn, 28 percent soybeans, and 21 percent wheat.

## Prices Received Used to Calculate Feed Price Ratios – United States: December 2015 with Comparisons

[Price data source for livestock and poultry commodities is United States Department of Agriculture's Agriculture Marketing Service]

Item	December 2014	November 2015	December 2015
	(dollars)	(dollars)	(dollars)
Broilers, live ..... pound	0.580	0.420	0.470
Eggs, market ..... dozen	1.66	1.93	1.04
Hogs, all .....cwt	64.30	45.90	42.80
Milk, all .....cwt	20.40	18.20	17.20
Steers and heifers .....cwt	166.00	131.00	123.00
Turkeys, live ..... pound	0.734	0.922	0.886
Corn ..... bushel	3.79	3.60	3.65
Hay, alfalfa ..... ton	180.00	150.00	150.00
Soybeans ..... bushel	10.30	8.68	8.76
Wheat, all ..... bushel	6.14	4.86	4.71

## Prices Paid for Feeder Livestock – United States: December 2015 with Comparisons

[Price data source is United States Department of Agriculture's Agriculture Marketing Service]

Item	December 2014	November 2015	December 2015
	(dollars)	(dollars)	(dollars)
Feeder cattle & calves .....cwt	249.00	186.00	161.00
Feeder pigs .....cwt	217.00	113.00	126.00

## Annual Average Prices Paid for Feeder Livestock and Poultry – United States: 2010-2015

Item	2010	2011	2012	2013	2014	2015
	(dollars)	(dollars)	(dollars)	(dollars)	(dollars)	(dollars)
Broiler chicks ..... 100	27.00	28.20	29.50	29.90	31.00	( <sup>1</sup> )
Egg-type chicks ..... 100	83.00	86.70	89.70	93.40	74.80	( <sup>1</sup> )
Feeders and stockers						
Cattle and calves .....cwt	109.00	133.00	149.00	150.00	215.00	214.00
Feeder pigs .....cwt	156.00	145.00	126.00	158.00	254.00	135.00
Turkey poults ..... each	1.43	1.47	1.54	1.67	1.67	( <sup>1</sup> )

<sup>1</sup> Discontinued publishing in *Agricultural Prices* beginning in 2015. Published in *Poultry - Production and Value* in April 2016.

## Annual Averages for Feed and Livestock & Poultry Indexes – United States: 2011-2015

Index	2011	2012	2013	2014	2015
Feed .....	100	115	118	115	105
Livestock and Poultry .....	100	107	108	154	147

## Grazing Fee Rates for Cattle – States, Regions, and United States: 2014 and 2015

State	Survey average rates <sup>1</sup>					
	Animal unit <sup>2</sup>		Cow-calf		Per head	
	2014	2015	2014	2015	2014	2015
	(dollars per month)	(dollars per month)	(dollars per month)	(dollars per month)	(dollars per month)	(dollars per month)
Arizona .....	9.00	9.00	(S)	(S)	(S)	(S)
California .....	20.00	19.10	25.10	25.50	22.50	23.50
Colorado .....	17.00	17.00	20.00	21.00	19.00	19.00
Idaho .....	16.50	17.00	19.00	20.00	18.50	18.50
Kansas .....	18.00	19.00	22.00	24.00	21.50	21.50
Montana .....	23.00	23.00	26.00	26.00	23.00	23.00
Nebraska .....	38.00	39.00	44.50	45.00	35.00	36.00
Nevada .....	11.50	(S)	(S)	(S)	(S)	(S)
New Mexico .....	13.50	15.50	(S)	(S)	15.50	15.50
North Dakota .....	19.20	20.50	22.00	23.00	18.00	(S)
Oklahoma .....	(S)	(S)	(S)	(S)	14.00	12.00
Oregon .....	17.00	16.50	19.50	21.00	19.00	19.00
South Dakota .....	30.00	32.00	35.00	39.00	32.50	32.50
Texas .....	(S)	(S)	(S)	(S)	14.00	12.00
Utah .....	15.00	16.00	19.00	20.00	16.50	17.00
Washington .....	13.50	13.00	16.50	17.00	15.00	15.50
Wyoming .....	20.00	21.00	22.00	23.00	21.00	21.00
17-State <sup>3</sup> .....	19.90	20.20	23.20	24.20	20.70	20.10
16-State <sup>4</sup> .....	21.60	22.10	25.40	26.40	22.60	22.60
11-State <sup>5</sup> .....	18.20	18.40	21.60	22.20	19.70	20.00
9-State <sup>6</sup> .....	20.30	20.70	23.50	24.70	20.90	20.00

(S) Insufficient number of reports to establish an estimate.

<sup>1</sup> The average rates are estimates based on survey indications of monthly lease rates for private, non-irrigated grazing land from the January Cattle Survey.

<sup>2</sup> Includes animal unit plus cow-calf rates. Cow-calf rate converted to animal unit (AUM) using (1 aum=cow-calf \*0.833).

<sup>3</sup> 17 Western States: Arizona, California, Colorado, Idaho, Kansas, Montana, Nebraska, Nevada, New Mexico, North Dakota, Oklahoma, Oregon, South Dakota, Texas, Utah, Washington, and Wyoming.

<sup>4</sup> 16 Western States: Arizona, California, Colorado, Idaho, Kansas, Montana, Nebraska, Nevada, New Mexico, North Dakota, Oklahoma, Oregon, South Dakota, Utah, Washington, and Wyoming.

<sup>5</sup> 11 Western States: Arizona, California, Colorado, Idaho, Montana, Nevada, New Mexico, Oregon, Utah, Washington, and Wyoming.

<sup>6</sup> 9 Great Plains States: Colorado, Kansas, Nebraska, New Mexico, North Dakota, Oklahoma, South Dakota, Texas, and Wyoming.



## Prices Paid Indexes as a Percent of 2011 Base, Monthly and Annual Average – United States: 2011-2015

[Revised historical price indexes for months not shown are available at [www.nass.usda.gov](http://www.nass.usda.gov)]

Year	Commodities, services, interest, taxes, and wage rates (PPITW)												
	January	February	March	April	May	June	July	August	September	October	November	December	Annual <sup>1</sup>
2011 ...	96	97	99	100	100	100	101	101	101	101	102	101	100
2012 ...	102	103	104	104	104	104	103	105	105	105	105	105	104
2013 ...	106	106	106	106	106	106	107	106	107	106	106	106	106
2014 ...	108	109	110	112	112	113	113	112	112	112	112	111	111
2015 ...	110	110	110	110	110	110	109	108	107	107	106	104	108
Year	Items used for production, interest, taxes, and wage rates (PITW)												
	January	February	March	April	May	June	July	August	September	October	November	December	Annual <sup>1</sup>
2011 ...	96	97	99	100	100	100	101	101	101	101	102	101	100
2012 ...	102	103	105	104	104	104	104	105	106	106	106	106	105
2013 ...	107	107	107	107	107	107	108	106	107	107	106	107	107
2014 ...	109	110	111	113	114	114	114	113	114	113	113	112	113
2015 ...	111	110	111	111	110	110	110	109	107	107	106	104	109
Year	Items used for production												
	January	February	March	April	May	June	July	August	September	October	November	December	Annual <sup>1</sup>
2011 ...	95	96	99	100	101	100	101	101	101	101	102	102	100
2012 ...	103	103	106	105	105	105	104	106	107	107	107	107	105
2013 ...	107	108	107	107	107	108	109	107	108	107	107	107	107
2014 ...	110	110	112	114	115	116	115	114	115	114	114	114	114
2015 ...	111	111	111	111	111	111	110	109	107	107	106	104	109
Year	Feed												
	January	February	March	April	May	June	July	August	September	October	November	December	Annual <sup>1</sup>
2011 ...	90	94	94	99	102	103	103	106	107	102	101	99	100
2012 ...	100	102	108	109	111	112	118	128	127	124	122	122	115
2013 ...	119	119	120	119	121	122	126	118	119	111	107	109	118
2014 ...	112	113	116	121	122	122	116	113	116	106	109	111	115
2015 ...	109	109	108	106	104	104	106	105	104	102	100	99	105
Year	Livestock & poultry												
	January	February	March	April	May	June	July	August	September	October	November	December	Annual <sup>1</sup>
2011 ...	98	100	103	103	97	95	98	95	95	101	107	109	100
2012 ...	113	118	116	111	109	107	94	95	99	103	105	108	107
2013 ...	109	107	101	100	97	98	103	108	111	119	122	124	108
2014 ...	128	129	134	143	145	153	162	159	164	177	176	172	154
2015 ...	160	152	157	159	159	159	152	147	136	137	130	116	147
Year	Seeds												
	January	February	March	April	May	June	July	August	September	October	November	December	Annual <sup>1</sup>
2011 ...	94	94	101	101	101	101	101	101	101	101	101	101	100
2012 ...	98	98	107	107	107	107	107	107	107	107	107	107	106
2013 ...	107	107	111	111	111	111	111	111	111	111	111	111	110
2014 ...	111	111	114	114	114	114	114	114	114	114	114	114	114
2015 ...	114	114	114	114	114	114	114	114	114	114	114	114	114
Year	Fertilizer												
	January	February	March	April	May	June	July	August	September	October	November	December	Annual <sup>1</sup>
2011 ...	93	93	97	99	99	100	101	101	101	104	106	105	100
2012 ...	105	101	102	103	104	105	104	97	98	99	99	98	101
2013 ...	98	99	101	103	105	103	97	91	90	90	91	91	97
2014 ...	91	94	97	100	103	100	94	93	92	91	90	91	95
2015 ...	90	90	90	91	91	91	88	87	88	86	85	86	89
Year	Chemicals												
	January	February	March	April	May	June	July	August	September	October	November	December	Annual <sup>1</sup>
2011 ...	99	100	100	99	99	99	99	100	100	102	101	102	100
2012 ...	102	105	104	104	104	105	106	106	106	106	108	108	105
2013 ...	108	108	108	108	108	108	108	108	109	110	110	110	109
2014 ...	110	111	110	109	109	109	109	109	110	110	110	110	110
2015 ...	99	106	106	106	106	106	107	107	107	107	106	106	106

See footnote(s) at end of table.

--continued

**Prices Paid Indexes as a Percent of 2011 Base, Monthly and Annual Average – United States: 2011-2015 (continued)**

[Revised historical price indexes for months not shown are available at [www.nass.usda.gov](http://www.nass.usda.gov)]

Year	Fuels												Annual <sup>1</sup>
	January	February	March	April	May	June	July	August	September	October	November	December	
2011 ...	88	93	100	105	106	103	102	102	102	99	102	99	100
2012 ...	98	101	106	105	100	93	93	99	102	102	98	95	99
2013 ...	95	101	99	97	96	95	96	100	101	99	99	102	98
2014 ...	104	107	99	103	102	102	101	99	99	93	88	77	98
2015 ...	67	68	69	67	68	66	66	61	60	60	58	54	64
Year	Supplies & repairs												Annual <sup>1</sup>
	January	February	March	April	May	June	July	August	September	October	November	December	
2011 ...	98	98	98	99	100	100	101	101	102	102	102	102	100
2012 ...	102	102	102	103	103	103	103	103	103	103	103	103	103
2013 ...	104	104	104	104	104	104	104	104	104	104	104	104	104
2014 ...	104	105	105	106	106	106	106	106	106	106	106	106	106
2015 ...	106	106	106	106	106	106	106	105	105	105	105	105	106
Year	Autos & trucks												Annual <sup>1</sup>
	January	February	March	April	May	June	July	August	September	October	November	December	
2011 ...	98	99	100	100	100	101	100	100	100	100	100	101	100
2012 ...	101	102	102	102	102	102	102	102	102	102	102	103	102
2013 ...	103	103	103	104	103	104	103	103	103	103	103	104	103
2014 ...	104	104	104	105	105	104	104	104	104	104	105	105	104
2015 ...	105	105	106	106	106	106	106	105	105	105	106	105	106
Year	Machinery												Annual <sup>1</sup>
	January	February	March	April	May	June	July	August	September	October	November	December	
2011 ...	97	98	98	99	99	100	100	101	101	102	102	103	100
2012 ...	103	103	104	105	105	105	106	106	106	106	107	107	105
2013 ...	107	108	108	108	108	108	108	108	108	108	109	109	108
2014 ...	111	111	111	112	112	112	112	113	112	112	113	113	112
2015 ...	114	115	115	115	115	115	115	115	115	115	116	116	115
Year	Building materials												Annual <sup>1</sup>
	January	February	March	April	May	June	July	August	September	October	November	December	
2011 ...	98	98	99	100	100	100	101	101	101	101	101	101	100
2012 ...	101	102	102	103	103	103	103	103	103	103	103	103	103
2013 ...	104	104	105	105	105	105	105	105	105	105	105	105	105
2014 ...	106	106	106	107	107	107	107	107	107	107	107	107	107
2015 ...	108	108	108	108	108	108	108	107	107	107	107	107	108
Year	Services <sup>2</sup>												Annual <sup>1</sup>
	January	February	March	April	May	June	July	August	September	October	November	December	
2011 ...	99	99	100	100	100	101	101	101	101	100	100	100	100
2012 ...	101	102	101	101	102	103	102	102	102	102	102	102	102
2013 ...	105	105	105	105	105	106	106	106	106	106	105	106	106
2014 ...	108	108	109	108	109	110	110	110	110	109	109	109	109
2015 ...	112	112	112	112	112	113	113	113	113	112	111	111	112
Year	Rent <sup>2</sup>												Annual <sup>1</sup>
	January	February	March	April	May	June	July	August	September	October	November	December	
2011 ...	100	100	100	100	100	100	100	100	100	100	100	100	100
2012 ...	102	102	102	102	102	102	102	102	102	102	102	102	102
2013 ...	106	106	106	106	106	106	106	106	106	106	106	106	106
2014 ...	108	108	108	108	108	108	108	108	108	108	108	108	108
2015 ...	110	110	110	110	110	110	110	110	110	110	110	110	110
Year	Ratio												Annual <sup>1</sup>
	January	February	March	April	May	June	July	August	September	October	November	December	
2011 ...	95	101	101	102	101	102	101	103	99	97	99	101	100
2012 ...	98	98	99	98	98	98	102	102	102	104	106	103	101
2013 ...	105	103	104	102	104	104	100	100	96	94	93	95	100
2014 ...	92	98	102	103	103	100	97	97	96	89	91	91	97
2015 ...	88	90	93	94	97	95	91	94	92	83	87	87	91

See footnote(s) at end of table.

--continued

**Prices Paid Indexes as a Percent of 2011 Base, Monthly and Annual Average – United States: 2011-2015 (continued)**

[Revised historical price indexes for months not shown are available at [www.nass.usda.gov](http://www.nass.usda.gov)]

Year	Interest												
	January	February	March	April	May	June	July	August	September	October	November	December	Annual <sup>1</sup>
2011 ...	100	100	100	100	100	100	100	100	100	100	100	100	100
2012 ...	94	94	94	94	94	94	94	94	94	94	94	94	94
2013 ...	95	95	95	95	95	95	95	95	95	95	95	95	95
2014 ...	96	96	96	96	96	96	96	96	96	96	96	96	96
2015 ...	97	97	97	97	97	97	97	97	97	97	97	97	97
Year	Taxes												
	January	February	March	April	May	June	July	August	September	October	November	December	Annual <sup>1</sup>
2011 ...	100	100	100	100	100	100	100	100	100	100	100	100	100
2012 ...	101	101	101	101	101	101	101	101	101	101	101	101	101
2013 ...	103	103	103	103	103	103	103	103	103	103	103	103	103
2014 ...	105	105	105	105	105	105	105	105	105	105	105	105	105
2015 ...	107	107	107	107	107	107	107	107	107	107	107	107	107
Year	Wage rates												
	January	February	March	April	May	June	July	August	September	October	November	December	Annual <sup>1</sup>
2011 ...	102	102	102	99	99	99	99	99	99	101	101	101	100
2012 ...	103	103	103	102	102	102	102	102	102	105	105	105	103
2013 ...	107	107	107	106	106	106	104	104	104	107	107	107	106
2014 ...	109	109	109	107	107	107	107	107	107	108	108	108	108
2015 ...	112	112	112	110	110	110	111	111	111	115	115	115	112
Year	Family living												
	January	February	March	April	May	June	July	August	September	October	November	December	Annual <sup>1</sup>
2011 ...	98	98	99	100	100	100	100	101	101	101	101	100	100
2012 ...	101	101	102	102	102	102	102	102	103	103	102	102	102
2013 ...	102	103	104	103	104	104	104	104	104	104	104	104	104
2014 ...	104	104	105	105	106	106	106	106	106	106	105	104	105
2015 ...	104	104	105	105	106	106	106	106	106	106	106	105	105
Year	Production items with farm origin <sup>3</sup>												
	January	February	March	April	May	June	July	August	September	October	November	December	Annual <sup>1</sup>
2011 ...	93	96	98	101	100	100	101	102	102	102	102	102	100
2012 ...	104	106	111	109	110	109	108	114	114	114	114	115	111
2013 ...	114	113	113	112	112	113	117	114	115	114	112	114	114
2014 ...	117	117	121	126	128	130	129	127	130	128	130	130	126
2015 ...	125	122	123	123	122	122	121	119	115	115	111	106	119
Year	Production items with non-farm origin <sup>4</sup>												
	January	February	March	April	May	June	July	August	September	October	November	December	Annual <sup>1</sup>
2011 ...	96	97	99	100	101	100	101	101	101	101	102	101	100
2012 ...	102	102	103	103	103	102	102	102	103	102	102	102	102
2013 ...	103	104	104	104	105	104	104	103	103	103	103	104	104
2014 ...	105	106	106	107	107	107	106	106	106	105	104	103	106
2015 ...	103	104	104	104	104	104	103	103	103	102	102	102	103
Year	Crop sector (PPITW)												
	January	February	March	April	May	June	July	August	September	October	November	December	Annual <sup>1</sup>
2011 ...	97	97	99	100	100	100	101	101	101	101	102	101	100
2012 ...	101	102	103	103	103	103	102	103	103	103	103	103	103
2013 ...	104	105	105	105	105	105	105	104	104	104	104	104	105
2014 ...	106	107	107	108	108	108	108	107	107	107	107	106	107
2015 ...	106	106	106	106	106	106	106	106	105	105	105	104	106
Year	Livestock Sector (PPITW)												
	January	February	March	April	May	June	July	August	September	October	November	December	Annual <sup>1</sup>
2011 ...	96	97	98	100	100	100	101	101	102	101	102	101	100
2012 ...	103	104	106	105	105	105	104	107	108	108	108	108	106
2013 ...	108	108	108	107	108	108	110	108	109	108	107	108	108
2014 ...	111	112	113	116	117	118	118	116	118	117	117	117	116
2015 ...	114	113	114	114	113	113	113	111	109	109	107	104	111

<sup>1</sup> Weighted index using 5-year average production expenditures

<sup>2</sup> For the 2011=100 base period, the Services & Rent Index is separated.

<sup>3</sup> Feed, livestock & poultry purchases, and seed.

<sup>4</sup> Fertilizer, agricultural chemicals, fuels, supplies & repairs, autos & trucks, machinery, building materials, and services & rent.

## Prices Paid Index Sub-Components as a Percent of 2011 Base, Monthly and Annual Average – United States: 2011-2015

[Revised historical price indexes for months not shown are available at [www.nass.usda.gov](http://www.nass.usda.gov)]

Year	Feed grains												
	January	February	March	April	May	June	July	August	September	October	November	December	Annual <sup>1</sup>
2011 ...	83	95	93	106	105	105	104	112	105	97	98	98	100
2012 ...	101	104	105	105	105	104	116	124	114	114	117	115	110
2013 ...	116	117	118	116	115	115	110	101	89	78	75	75	102
2014 ...	75	74	78	81	80	76	70	64	61	61	62	66	71
2015 ...	66	66	66	65	63	63	66	64	64	62	61	62	64
Year	Complete feeds												
	January	February	March	April	May	June	July	August	September	October	November	December	Annual <sup>1</sup>
2011 ...	92	94	96	99	101	102	102	104	106	103	102	100	100
2012 ...	100	100	111	112	114	114	117	126	129	127	125	124	117
2013 ...	121	120	120	120	120	122	125	124	123	119	115	116	120
2014 ...	119	120	124	127	129	128	125	120	121	115	114	116	122
2015 ...	119	117	116	115	113	111	113	114	112	111	110	108	113
Year	Hay & forages												
	January	February	March	April	May	June	July	August	September	October	November	December	Annual <sup>1</sup>
2011 ...	74	76	82	90	105	105	112	112	111	114	108	111	100
2012 ...	110	114	117	121	120	114	115	117	117	121	122	122	118
2013 ...	123	125	126	125	124	123	118	114	111	112	110	108	118
2014 ...	109	111	113	123	125	121	119	115	109	109	105	102	113
2015 ...	99	101	104	109	110	103	101	93	93	95	93	94	100
Year	Concentrates												
	January	February	March	April	May	June	July	August	September	October	November	December	Annual <sup>1</sup>
2011 ...	103	104	99	99	100	103	103	103	105	97	93	90	100
2012 ...	94	98	99	103	109	117	130	146	144	133	123	126	119
2013 ...	117	117	121	112	134	132	158	120	142	115	108	113	124
2014 ...	123	126	127	138	139	150	131	138	160	114	139	141	136
2015 ...	122	121	121	111	107	115	122	121	114	110	102	96	114
Year	Supplements												
	January	February	March	April	May	June	July	August	September	October	November	December	Annual <sup>1</sup>
2011 ...	94	97	92	96	99	98	98	105	110	102	105	103	100
2012 ...	96	95	100	95	98	96	106	124	118	115	113	116	106
2013 ...	108	109	116	119	111	113	114	110	114	113	110	117	113
2014 ...	121	117	120	123	120	117	110	107	111	110	109	115	115
2015 ...	120	120	118	112	108	112	111	115	116	116	117	116	115
Year	Feeder Cattle												
	January	February	March	April	May	June	July	August	September	October	November	December	Annual <sup>1</sup>
2011 ...	95	97	100	101	96	95	100	97	96	103	109	110	100
2012 ...	113	117	116	113	112	110	97	101	106	109	108	109	109
2013 ...	109	105	101	100	97	98	104	111	114	122	124	125	109
2014 ...	129	128	132	138	143	155	164	165	174	188	188	182	157
2015 ...	169	160	166	170	170	174	166	160	144	146	136	117	157
Year	Feeder pigs												
	January	February	March	April	May	June	July	August	September	October	November	December	Annual <sup>1</sup>
2011 ...	127	140	140	127	97	77	79	71	68	73	92	109	100
2012 ...	136	146	141	114	91	88	48	33	30	50	91	114	90
2013 ...	128	131	109	101	94	86	90	96	103	124	136	154	113
2014 ...	168	184	205	238	217	199	209	164	142	150	147	155	182
2015 ...	143	125	123	115	112	84	68	63	74	84	81	90	97
Year	Milk cow replacements												
	January	February	March	April	May	June	July	August	September	October	November	December	Annual <sup>1</sup>
2011 ...	92	92	92	100	100	100	104	104	104	104	104	104	100
2012 ...	103	103	103	101	101	101	100	100	100	98	98	98	101
2013 ...	96	96	96	96	96	96	96	96	96	99	99	99	97
2014 ...	101	101	101	127	127	127	139	139	139	149	149	149	129
2015 ...	140	140	140	139	139	139	143	143	143	139	139	139	140

See footnote(s) at end of table.

--continued

**Prices Paid Index Sub-Components as a Percent of 2011 Base, Monthly and Annual Average – United States: 2011-2015 (continued)**

[Revised historical price indexes for months not shown are available at [www.nass.usda.gov](http://www.nass.usda.gov)]

Year	Poultry												
	January	February	March	April	May	June	July	August	September	October	November	December	Annual <sup>1</sup>
2011 ...	100	100	100	100	100	100	100	100	100	100	100	100	100
2012 ...	103	103	103	103	103	103	103	103	103	103	103	103	103
2013 ...	105	105	105	105	105	105	105	105	105	105	105	105	105
2014 ...	102	102	102	102	102	102	102	102	102	102	102	102	102
2015 ...	102	102	102	102	102	102	102	102	102	102	102	102	102
Year	Field crop seeds												
	January	February	March	April	May	June	July	August	September	October	November	December	Annual <sup>1</sup>
2011 ...	94	94	101	101	101	101	101	101	101	101	101	101	100
2012 ...	98	98	106	106	106	106	106	106	106	106	106	106	105
2013 ...	106	106	110	110	110	110	110	110	110	110	110	110	109
2014 ...	110	110	113	113	113	113	113	113	113	113	113	113	113
2015 ...	113	113	114	114	114	114	114	114	114	114	114	114	114
Year	Grass & legume seeds												
	January	February	March	April	May	June	July	August	September	October	November	December	Annual <sup>1</sup>
2011 ...	97	97	101	101	101	101	101	101	101	101	101	101	100
2012 ...	94	94	117	117	117	117	117	117	117	117	117	117	113
2013 ...	117	117	120	120	120	120	120	120	120	120	120	120	120
2014 ...	120	120	123	123	123	123	123	123	123	123	123	123	123
2015 ...	123	123	120	120	120	120	120	120	120	120	120	120	121
Year	Mixed fertilizer												
	January	February	March	April	May	June	July	August	September	October	November	December	Annual <sup>1</sup>
2011 ...	94	98	100	101	100	100	100	99	100	102	103	103	100
2012 ...	103	104	100	100	100	100	98	92	92	93	92	91	97
2013 ...	91	92	94	94	94	93	90	86	85	86	86	86	90
2014 ...	86	87	90	90	91	91	86	85	85	85	85	86	87
2015 ...	86	86	86	86	87	87	86	86	86	85	84	84	86
Year	Nitrogen												
	January	February	March	April	May	June	July	August	September	October	November	December	Annual <sup>1</sup>
2011 ...	86	87	94	98	100	102	104	104	102	106	108	108	100
2012 ...	108	99	103	107	112	113	111	102	103	105	104	104	106
2013 ...	105	108	109	114	117	114	105	95	95	96	97	97	104
2014 ...	98	102	106	108	114	109	103	100	98	97	95	96	102
2015 ...	96	96	94	95	97	96	91	89	92	88	88	91	93
Year	Potash & phosphate												
	January	February	March	April	May	June	July	August	September	October	November	December	Annual <sup>1</sup>
2011 ...	107	94	95	99	96	95	97	96	101	104	109	106	100
2012 ...	107	101	106	99	97	96	98	99	100	103	102	101	101
2013 ...	101	97	101	101	102	102	97	92	92	88	87	85	95
2014 ...	84	89	96	104	105	99	92	93	94	94	93	89	94
2015 ...	86	89	90	91	89	89	83	83	84	82	80	79	85
Year	Herbicides												
	January	February	March	April	May	June	July	August	September	October	November	December	Annual <sup>1</sup>
2011 ...	100	100	100	99	99	99	99	99	100	102	101	102	100
2012 ...	102	105	106	105	106	106	106	107	107	107	108	108	106
2013 ...	108	108	107	107	107	107	107	107	108	110	110	110	108
2014 ...	110	111	110	109	109	109	109	109	110	110	110	110	110
2015 ...	100	107	107	107	107	107	107	107	107	107	106	107	106
Year	Insecticides												
	January	February	March	April	May	June	July	August	September	October	November	December	Annual <sup>1</sup>
2011 ...	83	95	93	106	105	105	104	112	105	97	98	98	100
2012 ...	101	104	105	105	105	104	116	124	114	114	117	115	110
2013 ...	108	109	111	110	111	111	111	111	112	113	113	113	111
2014 ...	113	114	114	112	112	112	111	111	112	112	111	111	112
2015 ...	100	107	107	107	107	107	107	107	107	108	107	107	107

See footnote(s) at end of table.

--continued

**Prices Paid Index Sub-Components as a Percent of 2011 Base, Monthly and Annual Average – United States: 2011-2015 (continued)**

[Revised historical price indexes for months not shown are available at [www.nass.usda.gov](http://www.nass.usda.gov)]

Year	Fungicides & other												
	January	February	March	April	May	June	July	August	September	October	November	December	Annual <sup>1</sup>
2011 ...	99	99	100	100	99	99	99	100	100	102	101	102	100
2012 ...	102	105	103	103	104	105	105	105	106	106	108	108	105
2013 ...	108	108	107	107	107	106	105	105	105	106	106	105	106
2014 ...	105	105	104	103	103	104	104	104	105	105	106	106	105
2015 ...	96	103	103	103	103	103	104	104	104	104	103	103	103
Year	Diesel												
	January	February	March	April	May	June	July	August	September	October	November	December	Annual <sup>1</sup>
2011 ...	88	93	102	106	105	102	102	100	100	99	103	100	100
2012 ...	99	103	108	107	103	97	96	103	106	105	102	101	103
2013 ...	99	104	100	96	95	95	95	96	97	96	95	96	97
2014 ...	96	98	99	97	96	94	93	91	90	86	85	79	92
2015 ...	69	65	65	63	65	65	63	59	57	57	56	52	61
Year	Gasoline												
	January	February	March	April	May	June	July	August	September	October	November	December	Annual <sup>1</sup>
2011 ...	88	91	101	108	111	104	104	103	103	98	96	93	100
2012 ...	96	102	109	111	106	101	98	106	109	106	98	94	103
2013 ...	94	104	102	100	102	104	105	106	107	103	102	104	103
2014 ...	107	110	99	119	118	117	113	107	103	95	86	74	104
2015 ...	61	63	68	68	75	77	77	73	66	64	61	57	68
Year	LP Gas												
	January	February	March	April	May	June	July	August	September	October	November	December	Annual <sup>1</sup>
2011 ...	91	91	91	96	102	103	104	105	109	104	104	101	100
2012 ...	94	90	94	91	74	62	71	74	77	83	78	71	80
2013 ...	76	80	92	95	94	86	91	104	108	109	113	120	97
2014 ...	131	134	98	106	105	112	115	118	128	117	105	75	112
2015 ...	67	83	81	82	70	58	61	56	68	67	64	58	68
Year	Supplies												
	January	February	March	April	May	June	July	August	September	October	November	December	Annual <sup>1</sup>
2011 ...	98	98	98	98	100	100	101	101	102	102	101	102	100
2012 ...	102	102	102	102	102	103	103	102	103	103	103	103	103
2013 ...	103	103	103	104	104	104	105	104	104	104	105	105	104
2014 ...	105	105	105	106	106	106	106	106	106	106	106	106	106
2015 ...	106	106	106	106	106	106	106	106	106	106	106	106	106
Year	Repairs												
	January	February	March	April	May	June	July	August	September	October	November	December	Annual <sup>1</sup>
2011 ...	98	98	98	99	100	100	100	101	102	102	102	102	100
2012 ...	102	102	103	103	103	103	104	104	104	103	103	103	103
2013 ...	104	104	104	104	104	104	104	104	104	104	104	104	104
2014 ...	104	104	105	106	106	106	106	106	106	106	106	106	106
2015 ...	106	106	106	106	106	106	105	105	105	105	105	105	106
Year	Autos												
	January	February	March	April	May	June	July	August	September	October	November	December	Annual <sup>1</sup>
2011 ...	97	98	99	99	100	101	101	101	101	101	101	101	100
2012 ...	101	101	101	102	102	102	101	101	101	101	102	102	101
2013 ...	102	102	102	102	102	102	102	102	101	101	101	102	102
2014 ...	102	102	102	102	102	102	102	101	101	101	102	101	102
2015 ...	101	102	102	102	102	102	102	101	101	101	101	101	102
Year	Trucks												
	January	February	March	April	May	June	July	August	September	October	November	December	Annual <sup>1</sup>
2011 ...	99	100	100	100	101	100	100	100	100	100	100	100	100
2012 ...	101	102	102	102	102	102	102	102	102	102	102	103	102
2013 ...	103	103	103	104	104	104	104	103	104	104	104	104	104
2014 ...	104	105	105	105	105	105	105	105	105	105	105	105	105
2015 ...	105	106	106	107	107	107	106	106	106	106	106	106	106

See footnote(s) at end of table.

--continued

**Prices Paid Index Sub-Components as a Percent of 2011 Base, Monthly and Annual Average – United States: 2011-2015 (continued)**

[Revised historical price indexes for months not shown are available at [www.nass.usda.gov](http://www.nass.usda.gov)]

Year	Tractors												Annual <sup>1</sup>
	January	February	March	April	May	June	July	August	September	October	November	December	
2011 ...	98	99	99	99	99	99	100	100	102	102	102	102	100
2012 ...	102	102	102	102	102	103	103	103	105	105	105	105	103
2013 ...	105	105	106	106	106	106	106	106	106	106	107	107	106
2014 ...	102	102	102	102	102	103	103	103	105	105	105	105	103
2015 ...	108	110	110	110	110	110	110	110	110	110	110	110	110
Year	Self-propelled												Annual <sup>1</sup>
	January	February	March	April	May	June	July	August	September	October	November	December	
2011 ...	97	97	98	98	99	99	100	100	101	103	103	104	100
2012 ...	104	105	105	106	106	106	107	107	107	107	107	109	106
2013 ...	109	109	109	109	109	109	109	109	109	109	110	111	109
2014 ...	104	105	105	106	106	106	107	107	107	107	107	109	106
2015 ...	118	118	119	119	119	119	119	119	119	119	121	121	119
Year	Other machinery												Annual <sup>1</sup>
	January	February	March	April	May	June	July	August	September	October	November	December	
2011 ...	97	98	98	99	100	100	100	101	101	101	102	102	100
2012 ...	102	102	104	105	105	106	106	106	106	106	106	106	105
2013 ...	107	108	108	108	108	108	108	108	108	109	109	109	108
2014 ...	102	102	104	105	105	106	106	106	106	106	106	106	105
2015 ...	115	115	115	115	115	114	115	115	115	115	115	115	115
Year	Custom rates												Annual <sup>1</sup>
	January	February	March	April	May	June	July	August	September	October	November	December	
2011 ...	100	100	100	100	100	100	100	100	100	100	100	100	100
2012 ...	103	103	103	103	103	103	103	103	103	103	103	103	103
2013 ...	106	106	106	106	106	106	106	106	106	106	106	106	106
2014 ...	103	103	103	103	103	103	103	103	103	103	103	103	103
2015 ...	112	112	112	112	112	112	112	112	112	112	112	112	112
Year	Other services												Average <sup>1</sup>
	January	February	March	April	May	June	July	August	September	October	November	December	
2011 ...	99	99	100	99	100	101	101	101	101	100	100	100	100
2012 ...	101	101	101	101	102	103	102	102	102	101	101	101	102
2013 ...	105	105	105	105	105	106	106	106	106	105	105	105	105
2014 ...	101	101	101	101	102	103	102	102	102	101	101	101	102
2015 ...	112	112	112	112	112	113	113	113	113	112	111	111	112
Year	Cash rent												Annual <sup>1</sup>
	January	February	March	April	May	June	July	August	September	October	November	December	
2011 ...	100	100	100	100	100	100	100	100	100	100	100	100	100
2012 ...	101	101	101	101	101	101	101	101	101	101	101	101	101
2013 ...	106	106	106	106	106	106	106	106	106	106	106	106	106
2014 ...	101	101	101	101	101	101	101	101	101	101	101	101	101
2015 ...	110	110	110	110	110	110	110	110	110	110	110	110	110
Year	Share rent												Annual <sup>1</sup>
	January	February	March	April	May	June	July	August	September	October	November	December	
2011 ...	100	100	100	100	100	100	100	100	100	100	100	100	100
2012 ...	102	102	102	102	102	102	102	102	102	102	102	102	102
2013 ...	105	105	105	105	105	105	105	105	105	105	105	105	105
2014 ...	102	102	102	102	102	102	102	102	102	102	102	102	102
2015 ...	110	110	110	110	110	110	110	110	110	110	110	110	110

<sup>1</sup> Weighted index using 5-year average production expenditures.

# Prices Paid Indexes as a Percent of 1910-1914 Base, Monthly and Annual Average – United States: 2011-2015

[Revised historical price indexes for months not shown are available at [www.nass.usda.gov](http://www.nass.usda.gov)]

Year	Commodities, services, interest, taxes, and wage rates (PPITW)												
	January	February	March	April	May	June	July	August	September	October	November	December	Annual <sup>1</sup>
2011 ...	2601	2631	2679	2710	2716	2714	2726	2732	2736	2736	2751	2743	2706
2012 ...	2761	2778	2823	2815	2816	2810	2798	2837	2850	2855	2848	2850	2820
2013 ...	2873	2880	2880	2871	2878	2881	2899	2870	2884	2873	2863	2878	2878
2014 ...	2931	2948	2977	3026	3044	3062	3046	3023	3044	3022	3025	3011	3013
2015 ...	2977	2964	2977	2971	2965	2967	2954	2934	2900	2899	2868	2826	2934
Year	Items used for production, interest, taxes, and wage rates (PITW)												
	January	February	March	April	May	June	July	August	September	October	November	December	Annual <sup>1</sup>
2011 ...	2703	2737	2790	2825	2830	2828	2842	2848	2852	2853	2870	2862	2820
2012 ...	2884	2902	2953	2942	2944	2937	2924	2969	2982	2988	2982	2986	2949
2013 ...	3011	3016	3014	3004	3012	3014	3036	3001	3017	3005	2993	3012	3011
2014 ...	3074	3093	3125	3182	3202	3224	3204	3178	3202	3177	3183	3169	3168
2015 ...	3130	3112	3124	3116	3107	3108	3092	3069	3029	3027	2991	2941	3071
Year	Items used for production												
	January	February	March	April	May	June	July	August	September	October	November	December	Annual <sup>1</sup>
2011 ...	1977	2006	2052	2088	2092	2091	2103	2108	2112	2109	2124	2117	2082
2012 ...	2136	2152	2196	2188	2190	2184	2173	2212	2224	2223	2217	2221	2193
2013 ...	2234	2238	2237	2231	2237	2239	2261	2231	2245	2230	2220	2236	2237
2014 ...	2282	2298	2325	2378	2395	2413	2397	2374	2395	2371	2376	2365	2364
2015 ...	2320	2305	2316	2313	2305	2306	2289	2269	2235	2228	2197	2155	2270
Year	Feed												
	January	February	March	April	May	June	July	August	September	October	November	December	Annual <sup>1</sup>
2011 ...	996	1035	1037	1089	1121	1133	1135	1169	1175	1126	1110	1096	1102
2012 ...	1105	1120	1192	1202	1226	1229	1298	1408	1398	1369	1348	1347	1270
2013 ...	1308	1310	1325	1310	1337	1343	1393	1297	1312	1224	1180	1200	1295
2014 ...	1235	1245	1279	1336	1348	1347	1280	1249	1280	1167	1201	1224	1266
2015 ...	1206	1197	1195	1170	1148	1147	1166	1162	1143	1129	1104	1087	1155
Year	Livestock & poultry												
	January	February	March	April	May	June	July	August	September	October	November	December	Annual <sup>1</sup>
2011 ...	1930	1984	2032	2040	1909	1866	1939	1880	1866	1988	2104	2152	1974
2012 ...	2233	2321	2300	2197	2153	2117	1850	1882	1952	2030	2078	2135	2104
2013 ...	2161	2108	1997	1978	1925	1927	2026	2133	2188	2358	2408	2442	2138
2014 ...	2528	2549	2641	2816	2859	3027	3202	3146	3238	3487	3484	3405	3032
2015 ...	3167	2998	3090	3145	3135	3144	3003	2908	2675	2714	2563	2288	2903
Year	Seeds												
	January	February	March	April	May	June	July	August	September	October	November	December	Annual <sup>1</sup>
2011 ...	3082	3082	3327	3327	3327	3327	3327	3327	3327	3327	3327	3327	3286
2012 ...	3208	3208	3521	3521	3521	3521	3521	3521	3521	3521	3521	3521	3469
2013 ...	3521	3521	3643	3643	3643	3643	3643	3643	3643	3643	3643	3643	3623
2014 ...	3643	3643	3746	3746	3746	3746	3746	3746	3746	3746	3746	3746	3729
2015 ...	3746	3746	3755	3755	3755	3755	3755	3755	3755	3755	3755	3755	3754
Year	Fertilizer												
	January	February	March	April	May	June	July	August	September	October	November	December	Annual <sup>1</sup>
2011 ...	1119	1116	1165	1195	1197	1203	1220	1214	1217	1253	1279	1270	1204
2012 ...	1270	1220	1232	1238	1257	1263	1248	1173	1180	1196	1189	1184	1221
2013 ...	1186	1196	1220	1244	1262	1242	1169	1093	1085	1088	1093	1091	1164
2014 ...	1091	1128	1172	1201	1234	1202	1134	1114	1104	1098	1087	1093	1138
2015 ...	1086	1089	1084	1092	1099	1097	1054	1044	1061	1033	1026	1038	1067
Year	Chemicals												
	January	February	March	April	May	June	July	August	September	October	November	December	Annual <sup>1</sup>
2011 ...	891	895	894	892	890	886	891	894	902	912	910	918	898
2012 ...	919	942	938	931	938	947	948	951	954	954	967	966	946
2013 ...	972	969	967	966	969	966	968	970	976	989	989	989	974
2014 ...	987	993	988	979	978	977	975	980	986	986	985	983	983
2015 ...	892	955	955	955	953	953	958	958	957	959	952	954	950

See footnote(s) at end of table.

--continued



**Prices Paid Indexes as a Percent of 1910-1914 Base, Monthly and Annual Average – United States: 2011-2015 (continued)**

[Revised historical price indexes for months not shown are available at [www.nass.usda.gov](http://www.nass.usda.gov)]

Year	Fuels												Annual <sup>1</sup>
	January	February	March	April	May	June	July	August	September	October	November	December	
2011 ...	2468	2589	2801	2931	2959	2875	2863	2843	2841	2778	2850	2769	2797
2012 ...	2745	2813	2966	2949	2786	2598	2594	2771	2859	2852	2741	2670	2779
2013 ...	2661	2815	2764	2711	2695	2663	2699	2785	2829	2783	2771	2843	2752
2014 ...	2911	2983	2764	2891	2858	2852	2825	2775	2766	2611	2473	2162	2739
2015 ...	1870	1890	1920	1879	1904	1854	1835	1711	1690	1682	1627	1516	1782
Year	Supplies & repairs												Annual <sup>1</sup>
	January	February	March	April	May	June	July	August	September	October	November	December	
2011 ...	1151	1154	1155	1169	1176	1179	1187	1193	1198	1198	1198	1198	1180
2012 ...	1203	1204	1207	1212	1212	1214	1218	1217	1220	1220	1220	1218	1214
2013 ...	1223	1222	1223	1223	1223	1223	1227	1225	1225	1226	1227	1227	1225
2014 ...	1232	1235	1238	1248	1248	1249	1251	1252	1251	1252	1253	1252	1247
2015 ...	1255	1254	1254	1251	1250	1249	1245	1244	1243	1243	1243	1243	1248
Year	Autos & trucks												Annual <sup>1</sup>
	January	February	March	April	May	June	July	August	September	October	November	December	
2011 ...	3026	3053	3067	3076	3089	3091	3084	3074	3071	3078	3084	3090	3074
2012 ...	3109	3133	3136	3138	3132	3132	3123	3121	3124	3130	3142	3151	3131
2013 ...	3169	3173	3176	3185	3181	3186	3180	3171	3178	3177	3183	3189	3179
2014 ...	3193	3207	3205	3216	3215	3201	3204	3204	3205	3214	3220	3224	3209
2015 ...	3224	3240	3248	3257	3258	3257	3245	3235	3234	3233	3243	3242	3243
Year	Machinery												Annual <sup>1</sup>
	January	February	March	April	May	June	July	August	September	October	November	December	
2011 ...	5937	5982	6002	6029	6067	6083	6108	6150	6190	6237	6259	6287	6111
2012 ...	6304	6315	6360	6390	6411	6436	6456	6468	6493	6505	6509	6537	6432
2013 ...	6557	6585	6592	6597	6600	6596	6602	6600	6606	6619	6663	6686	6609
2014 ...	6783	6775	6785	6820	6835	6851	6867	6882	6859	6875	6892	6913	6845
2015 ...	6986	7021	7037	7044	7044	7041	7044	7044	7044	7052	7116	7116	7049
Year	Building materials												Annual <sup>1</sup>
	January	February	March	April	May	June	July	August	September	October	November	December	
2011 ...	2277	2290	2305	2318	2326	2336	2347	2346	2345	2344	2341	2341	2326
2012 ...	2353	2370	2376	2386	2395	2395	2388	2391	2396	2395	2399	2404	2387
2013 ...	2418	2429	2435	2442	2437	2433	2431	2438	2437	2437	2438	2439	2435
2014 ...	2458	2468	2477	2479	2486	2486	2489	2495	2498	2499	2498	2497	2486
2015 ...	2503	2503	2503	2508	2505	2503	2501	2492	2489	2488	2488	2487	2498
Year	Services & rent												Annual <sup>1</sup>
	January	February	March	April	May	June	July	August	September	October	November	December	
2011 ...	2112	2114	2119	2118	2123	2132	2132	2132	2133	2125	2121	2120	2123
2012 ...	2156	2158	2157	2157	2161	2172	2168	2169	2170	2159	2159	2159	2162
2013 ...	2230	2232	2232	2232	2237	2252	2252	2252	2253	2242	2238	2242	2241
2014 ...	2299	2299	2301	2296	2308	2323	2323	2323	2318	2308	2304	2306	2309
2015 ...	2362	2361	2357	2360	2361	2373	2372	2372	2369	2359	2355	2352	2363

See footnote(s) at end of table.

--continued

**Prices Paid Indexes as a Percent of 1910-1914 Base, Monthly and Annual Average – United States: 2011-2015 (continued)**

[Revised historical price indexes for months not shown are available at [www.nass.usda.gov](http://www.nass.usda.gov)]

Year	Interest												Annual <sup>1</sup>	
	January	February	March	April	May	June	July	August	September	October	November	December		
2011 ...	3646	3646	3646	3646	3646	3646	3646	3646	3646	3646	3646	3646	3646	3646
2012 ...	3434	3434	3434	3434	3434	3434	3434	3434	3434	3434	3434	3434	3434	3434
2013 ...	3451	3451	3451	3451	3451	3451	3451	3451	3451	3451	3451	3451	3451	3451
2014 ...	3504	3504	3504	3504	3504	3504	3504	3504	3504	3504	3504	3504	3504	3504
2015 ...	3539	3539	3539	3539	3539	3539	3539	3539	3539	3539	3539	3539	3539	3539
Year	Taxes												Annual <sup>1</sup>	
	January	February	March	April	May	June	July	August	September	October	November	December		
2011 ...	5935	5935	5935	5935	5935	5935	5935	5935	5935	5935	5935	5935	5935	5935
2012 ...	5993	5993	5993	5993	5993	5993	5993	5993	5993	5993	5993	5993	5993	5993
2013 ...	6137	6137	6137	6137	6137	6137	6137	6137	6137	6137	6137	6137	6137	6137
2014 ...	6233	6233	6233	6233	6233	6233	6233	6233	6233	6233	6233	6233	6233	6233
2015 ...	6376	6376	6376	6376	6376	6376	6376	6376	6376	6376	6376	6376	6376	6376
Year	Wage rates												Annual <sup>1</sup>	
	January	February	March	April	May	June	July	August	September	October	November	December		
2011 ...	7301	7301	7301	7075	7075	7075	7062	7062	7062	7205	7205	7205	7205	7161
2012 ...	7372	7372	7372	7302	7302	7302	7270	7270	7270	7519	7519	7519	7519	7366
2013 ...	7692	7692	7692	7609	7609	7609	7474	7474	7474	7654	7654	7654	7654	7607
2014 ...	7826	7826	7826	7686	7686	7686	7654	7654	7654	7756	7756	7756	7756	7731
2015 ...	8018	8018	8018	7858	7858	7858	7980	7980	7980	8204	8204	8204	8204	8015
Year	Family living												Average <sup>1</sup>	
	January	February	March	April	May	June	July	August	September	October	November	December		
2011 ...	2092	2102	2122	2136	2146	2144	2146	2152	2155	2150	2149	2143	2136	2136
2012 ...	2153	2162	2179	2185	2183	2180	2176	2188	2198	2197	2187	2181	2181	2181
2013 ...	2187	2205	2211	2209	2213	2218	2219	2222	2224	2219	2214	2214	2213	2213
2014 ...	2222	2230	2245	2252	2260	2264	2263	2259	2261	2255	2243	2231	2249	2249
2015 ...	2220	2230	2243	2248	2259	2267	2267	2264	2260	2259	2255	2247	2252	2252
Year	Commodities, services, interest, taxes, and wage rates Adjusted for productivity												Annual <sup>1</sup>	
	January	February	March	April	May	June	July	August	September	October	November	December		
2011 ...	1457	1463	1473	1464	1466	1465	1466	1468	1469	1478	1480	1478	1469	1469
2012 ...	1438	1442	1451	1446	1446	1445	1440	1448	1451	1468	1466	1465	1451	1451
2013 ...	1408	1411	1412	1405	1407	1407	1402	1398	1401	1409	1407	1409	1406	1406
2014 ...	1410	1413	1419	1419	1422	1426	1421	1417	1421	1423	1422	1418	1419	1419
2015 ...	1416	1416	1419	1409	1409	1411	1416	1413	1407	1421	1416	1409	1414	1414
Year	Parity ratio <sup>2</sup>												Annual <sup>1</sup>	
	January	February	March	April	May	June	July	August	September	October	November	December		
2011 ...	36	38	38	39	39	39	39	39	38	37	38	38	38	38
2012 ...	37	37	38	37	37	37	39	39	39	39	40	39	38	38
2013 ...	40	39	39	39	40	39	38	38	37	36	36	36	38	38
2014 ...	35	37	39	39	39	38	37	37	36	34	35	35	37	37
2015 ...	34	35	35	36	37	36	35	36	35	32	33	33	35	35
Year	Adjusted parity ratio (PPITW) <sup>3</sup>												Annual <sup>1</sup>	
	January	February	March	April	May	June	July	August	September	October	November	December		
2011 ...	37	39	39	40	40	40	40	40	39	38	39	39	39	39
2012 ...	38	38	39	38	38	38	40	40	40	40	41	40	39	39
2013 ...	41	40	40	40	41	40	39	39	38	37	37	37	39	39
2014 ...	36	38	40	40	40	39	38	38	37	35	36	36	38	38
2015 ...	35	36	36	37	38	37	36	37	36	33	34	34	36	36

<sup>1</sup> Weighted index using 5-year average production expenditures.

<sup>2</sup> Ratio of index of prices received to index of prices paid for commodities, services, interest, taxes, and wage rates.

<sup>3</sup> Ratio of the index of prices received after adjustment for government payments to the index of prices paid for commodities, services, interest, taxes, and wage rates.

## Feed Ratios Monthly and Annual Average – United States: 2011 - 2015

[Annual average is a simple average of monthly ratios, January through December]

Year	Broiler <sup>1</sup>												
	January	February	March	April	May	June	July	August	September	October	November	December	Average
2011	3.3	2.9	3.3	3.0	3.1	3.1	3.0	2.8	2.8	3.0	3.2	3.3	3.1
2012	3.2	3.4	3.6	3.1	3.2	3.1	2.6	2.5	2.8	2.9	3.2	3.4	3.1
2013	3.6	3.5	3.7	3.8	3.9	3.8	3.4	3.3	3.7	3.9	4.2	4.1	3.7
2014	4.2	4.0	4.6	4.6	4.9	4.8	4.9	4.8	5.9	6.1	5.8	5.2	5.0
2015	5.4	5.0	5.4	6.0	6.2	5.9	4.7	4.4	4.2	4.1	4.3	4.7	5.0
Year	Market Egg <sup>2</sup>												
	January	February	March	April	May	June	July	August	September	October	November	December	Average
2011	5.8	6.0	5.2	6.4	4.5	4.9	4.9	6.7	5.7	6.8	6.8	8.7	6.0
2012	5.1	5.0	5.7	4.5	4.2	4.8	4.8	5.6	7.0	5.6	6.6	6.3	5.4
2013	5.6	5.0	6.1	4.2	6.3	4.4	5.3	6.1	6.4	7.3	10.4	10.7	6.5
2014	8.0	10.9	8.9	8.9	7.9	7.3	9.6	8.6	9.0	10.5	15.1	17.7	10.2
2015	11.4	12.2	15.3	9.6	18.2	21.9	19.6	26.5	20.7	14.7	22.9	12.2	17.1
Year	Turkey <sup>3</sup>												
	January	February	March	April	May	June	July	August	September	October	November	December	Average
2011	4.6	4.2	4.4	4.5	4.6	4.8	4.7	4.7	5.2	5.8	5.9	5.4	4.9
2012	4.8	4.7	4.8	5.0	5.0	5.1	4.4	4.3	4.8	4.9	4.7	4.3	4.7
2013	4.0	3.9	4.1	4.2	4.1	4.1	4.3	4.6	5.0	5.8	5.3	5.5	4.6
2014	5.2	5.4	5.3	5.1	5.4	5.6	6.2	6.8	7.6	8.3	8.1	7.1	6.3
2015	6.3	6.6	6.8	7.1	7.9	8.4	8.5	9.4	10.0	10.6	10.2	9.8	8.5
Year	Milk <sup>4</sup>												
	January	February	March	April	May	June	July	August	September	October	November	December	Average
2011	1.96	2.01	2.12	1.81	1.71	1.86	1.88	1.83	1.84	1.82	1.89	1.81	1.88
2012	1.71	1.55	1.48	1.41	1.34	1.37	1.33	1.37	1.59	1.74	1.74	1.65	1.52
2013	1.58	1.52	1.48	1.54	1.54	1.52	1.53	1.69	1.88	2.12	2.27	2.30	1.75
2014	2.46	2.58	2.54	2.42	2.23	2.19	2.36	2.63	2.96	2.92	2.75	2.40	2.54
2015	2.11	2.05	2.01	1.95	1.96	2.06	2.01	2.11	2.25	2.29	2.42	2.27	2.13
Year	Hog-Corn <sup>5</sup>												
	January	February	March	April	May	June	July	August	September	October	November	December	Average
2011	11.3	10.9	11.4	10.7	10.9	10.9	11.3	11.0	10.5	12.0	11.0	10.8	11.1
2012	10.5	10.4	10.3	9.9	9.9	11.0	10.1	8.8	8.1	9.1	8.7	9.1	9.7
2013	9.2	9.2	8.3	8.9	9.8	10.7	11.2	11.9	13.1	14.8	14.6	13.9	11.3
2014	13.8	15.1	18.1	18.9	17.6	18.8	23.0	22.9	21.7	21.6	18.5	17.0	18.9
2015	15.0	13.3	13.2	13.1	16.2	16.7	15.4	16.0	14.8	15.1	12.8	11.7	14.4
Year	Steer & Heifer-Corn <sup>6</sup>												
	January	February	March	April	May	June	July	August	September	October	November	December	Average
2011	22.3	19.6	21.3	19.2	18.2	17.2	18.2	16.6	18.3	21.3	21.6	21.5	19.6
2012	20.4	20.1	20.2	19.4	19.2	19.0	16.2	15.5	17.9	18.3	18.0	18.3	18.5
2013	18.2	17.8	17.8	18.2	18.2	17.8	17.8	19.6	23.0	27.6	30.2	29.9	21.4
2014	31.7	33.3	33.2	31.8	31.2	32.9	38.7	43.8	45.3	45.7	46.9	43.8	38.2
2015	43.5	42.5	42.5	43.7	44.2	43.5	39.5	40.5	38.0	35.1	36.4	33.7	40.3

<sup>1</sup> The price of commercial prepared broiler feed is based on current United States prices received for corn and soybeans. The modeled feed ration uses 58 percent corn and 42 percent soybeans.

<sup>2</sup> The price of commercial prepared layer feed is based on current United States prices received for corn and soybeans. The modeled feed ration uses 75 percent corn and 25 percent soybeans.

<sup>3</sup> The price of commercial prepared turkey feed is based on current United States prices received for corn, soybeans, and wheat. The modeled feed ration uses 51 percent corn, 28 percent soybeans, and 21 percent wheat.

<sup>4</sup> The price of commercial prepared dairy feed is based on current United States prices received for corn, soybeans, and alfalfa. The modeled feed ration uses 51 percent corn, 8 percent soybeans, and 41 percent alfalfa.

<sup>5</sup> Number of bushels of corn equal in value to 100 pounds of all hogs, live weight.

<sup>6</sup> Number of bushels of corn equal in value to 100 pounds of steers & heifers, live weight.

## Reliability of Prices Paid Estimates

**Definition:** Prices paid by farmers represent the average costs of inputs purchased by farmers and ranchers to produce agricultural commodities. Conceptually, the average price when multiplied by quantity purchased should equal total producer expenditures for the item.

**Survey procedures:** The prices paid data are obtained from establishments that sell goods and services to farmers and ranchers. Annually, about 8,500 firms are randomly selected from lists by type of item sold with an average response rate in the range of 75-80 percent. Firms are asked to report the price for the specified item "most commonly bought by farmers" or that was the "volume seller". Approximately 135 items are surveyed each March to represent all production input items purchased. The survey reference period for most items is the five business days centered at the 15th of the month. Separate prices paid surveys are conducted for agricultural chemicals, fuels, feed, fertilizer, machinery, and seed.

**Summary and estimation procedures:** The annual March Prices Paid Survey is summarized as a non-probability survey. Average prices reported are aggregated to the region and United States level using weights available from expenditure data and other administrative sources. Price recommendations are prepared by the Regional Field Offices and Headquarters for review by the Agricultural Statistics Board in Washington, D.C. Also, the change in price level for individual items surveyed are combined to the regional and United States levels, and are published as prices paid indexes referenced to a specific base period. Prices paid indexes for new autos and trucks, building materials, farm supplies, motor supplies, and marketing containers are updated based on price changes measured in selected Bureau of Labor Statistics (BLS) indexes.

**Revisions:** Any revisions are published in the monthly and in annual issues of Agricultural Prices. The basis for revision must be supported by additional data that directly affect the level of the estimate. More revisions are likely for March when separate prices paid surveys are conducted, in lieu of BLS indexes, by the USDA to measure price change.

**Reliability:** Current methods of summarization for the March data are not designed directly to calculate sampling errors. However, analytical measures approximate the United States relative sampling errors for major items around 10 percent. Any non-sampling errors are attributed to such things as the inability to obtain correct information, differences in interpreting questions or definitions, mistakes in coding or processing the data, etc. Efforts are made at each step in the survey process to minimize these non-sampling errors.

**Program change:** Effective January 2014, the National Agricultural Statistics Service modified the five-year moving weights and updated the base reference period. In January 2015, publication of preliminary prices was suspended, and the annual average index was replaced by an annual index.

As of January 2014, the 1990-1992 base reference period was updated to 2011. Five-year moving average weights are adjusted (normalized) to minimize the effects of price changes. The 1910-1914=100 price indexes, required by statute for computing parity prices, were linked forward based on the changes in the new 2011=100 indexes. The new indexes were constructed by multiplying the ratios of the current prices to the base period prices by the moving average weights.

## Information Contacts

### General

Troy Joshua, Chief, Environmental, Economics and Demographics Branch ..... (202) 720-6146

### Crop Prices Received

Lance Honig, Chief, Crops Branch ..... (202) 720-2127

Anthony Prillaman, Head, Field Crops Section ..... (202) 720-2127

Angie Considine – Cotton, Cotton Ginnings, Sorghum ..... (202) 720-5944

Tony Dahlman – Oats, Soybeans ..... (202) 720-7621

Chris Hawthorn – Corn, Flaxseed, Proso Millet ..... (202) 720-9526

James Johanson – County Estimates, Hay ..... (202) 690-8533

Scott Matthews – Barley, Crop Weather ..... (202) 720-7621

Jean Porter – Rye, Wheat ..... (202) 720-8068

Bianca Pruneda – Peanuts, Rice ..... (202) 720-7688

Travis Thorson – Sunflower, Canola, Safflower, Rapeseed, Mustard Seed ..... (202) 720-7369

Jorge Garcia-Pratts, Head, Fruits, Vegetables and Special Crops Section ..... (202) 720-2127

Vincent Davis – Fresh and Processing Vegetables, Onions, Strawberries ..... (202) 720-2157

Fleming Gibson – Citrus, Coffee, Sugar Crops, Tropical Fruits ..... (202) 720-5412

Greg Lemmons – Berries, Cranberries, Potatoes, Sweet Potatoes ..... (202) 720-4285

Dave Losh – Hops ..... (360) 709-2400

Dan Norris – Austrian Winter Peas, Dry Edible Peas, Lentils, Mint, Mushrooms, Peaches, Pears,  
Wrinkled Seed Peas, Dry Beans ..... (202) 720-3250

Daphne Schauber – Floriculture, Grapes, Maple Syrup, Nursery, Tree Nuts ..... (202) 720-4215

Chris Singh – Apples, Apricots, Cherries, Plums, Prunes, Tobacco ..... (202) 720-4288

### Livestock Prices Received

Dan Kerestes, Chief, Livestock Branch ..... (202) 720-3570

Scott Hollis, Head, Livestock Section ..... (202) 720-3570

Doug Bounds – Hogs and Pigs ..... (202) 720-3106

Dave Colwell – Sheep and Goats ..... (202) 720-8784

Michael Klamm – Cattle and Cattle on Feed ..... (202) 720-3040

Mike Miller – Milk, Milk Cows ..... (202) 720-3278

Bruce Boess, Head, Poultry and Specialty Commodities Section ..... (202) 720-3570

Heidi Gleich – Broilers ..... (202) 720-0585

Kim Linonis – Eggs ..... (202) 690-8632

Sammy Neal – Turkeys ..... (202) 720-3244

Josh O’Rear – Honey ..... (202) 690-3676

### Indexes, Prices Paid, and Parity Prices

Troy Joshua, Chief, Environmental, Economics and Demographics Branch ..... (202) 720-6146

Tony Dorn, Head, Economics Section ..... (202) 690-3223

Daryl Brinkman – Prices Received Indexes, Parity Prices ..... (202) 720-8844

Courtney Charles – Prices Paid, Prices Paid Indexes ..... (202) 690-3229

Greg Gholson – Prices Received Indexes, Parity Prices, Prices Paid Indexes, Prices Paid for Feed,  
Fertilizer, Chemicals, Seeds, Fuels, Farm Supplies and Repairs, Farm Machinery, Feeder Livestock,  
Poultry Chicks, Feed Price Ratios ..... (202) 690-1348

Joe Hagedorn – Cash Rents, Grazing Fees ..... (202) 690-3231

## Access to NASS Reports

For your convenience, you may access NASS reports and products the following ways:

- All reports are available electronically, at no cost, on the NASS web site: <http://www.nass.usda.gov>
- Both national and state specific reports are available via a free e-mail subscription. To set-up this free subscription, visit <http://www.nass.usda.gov> and click on “National” or “State” in upper right corner above “search” box to create an account and select the reports you would like to receive.

For more information on NASS surveys and reports, call the NASS Agricultural Statistics Hotline at (800) 727-9540, 7:30 a.m. to 4:00 p.m. ET, or e-mail: [nass@nass.usda.gov](mailto:nass@nass.usda.gov).

The U.S. Department of Agriculture (USDA) prohibits discrimination against its customers, employees, and applicants for employment on the basis of race, color, national origin, age, disability, sex, gender identity, religion, reprisal, and where applicable, political beliefs, marital status, familial or parental status, sexual orientation, or all or part of an individual's income is derived from any public assistance program, or protected genetic information in employment or in any program or activity conducted or funded by the Department. (Not all prohibited bases will apply to all programs and/or employment activities.)

If you wish to file a Civil Rights program complaint of discrimination, complete the [USDA Program Discrimination Complaint Form](#) (PDF), found online at [http://www.ascr.usda.gov/complaint\\_filing\\_cust.html](http://www.ascr.usda.gov/complaint_filing_cust.html), or at any USDA office, or call (866) 632-9992 to request the form. You may also write a letter containing all of the information requested in the form. Send your completed complaint form or letter to us by mail at U.S. Department of Agriculture, Director, Office of Adjudication, 1400 Independence Avenue, S.W., Washington, D.C. 20250-9410, by fax (202) 690-7442 or email at [program.intake@usda.gov](mailto:program.intake@usda.gov).

## Price Program Links

Economics and Prices

[http://www.nass.usda.gov/Statistics by Subject/Economics and Prices/index.php](http://www.nass.usda.gov/Statistics%20by%20Subject/Economics%20and%20Prices/index.php)

January 2014 Price Program Update

[http://www.nass.usda.gov/Surveys/Guide to NASS Surveys/Prices/updates.pdf](http://www.nass.usda.gov/Surveys/Guide%20to%20NASS%20Surveys/Prices/updates.pdf)

January 2015 Price Program Update

[http://www.nass.usda.gov/Surveys/Guide to NASS Surveys/Prices/update2015.pdf](http://www.nass.usda.gov/Surveys/Guide%20to%20NASS%20Surveys/Prices/update2015.pdf)

April 2015 Price Program Update

[http://www.nass.usda.gov/Surveys/Guide to NASS Surveys/Prices/updateApr2015.pdf](http://www.nass.usda.gov/Surveys/Guide%20to%20NASS%20Surveys/Prices/updateApr2015.pdf)

February 2016 Price Program Update

[http://www.nass.usda.gov/Surveys/Guide to NASS Surveys/Prices/updateFeb2016.pdf](http://www.nass.usda.gov/Surveys/Guide%20to%20NASS%20Surveys/Prices/updateFeb2016.pdf)