

[Linked Applications](#)

Loading...

[eLandings Wiki](#)

- [Spaces](#)
- [Browse](#)
 - [Pages](#)
 - [Blog](#)
 - [Labels](#)
 - [Space Operations](#)
-
-
- Quick Search
- [Help](#)
 - [Online Help](#)
 - [Keyboard Shortcuts](#)
 - [Feed Builder](#)
 - [What's new](#)
 - [Available Gadgets](#)
 - [About Confluence](#)
-
-
-
- [Log in](#)

Search

- - [Attachments \(33\)](#)
 - [Page History](#)
 - [Page Information](#)
 - [Resolved comments](#)
 - [Link to this Page...](#)
 - [View in Hierarchy](#)
 - [View Source](#)
 - [Export to PDF](#)
 - [Export to Word](#)



1. [eLandings User Documentation](#)
2. ...
3. [eLandings User Documentation](#)
4. [eLandings User Manual](#)
5. [eLandings eLogbook Instructions](#)

[Longline/Pot Gear Catcher Processor eLogbook Instructions for eLandings](#)

[Skip to end of metadata](#)

-
-
- Created by [Suja Hall](#), last modified on [Nov 12, 2014](#)

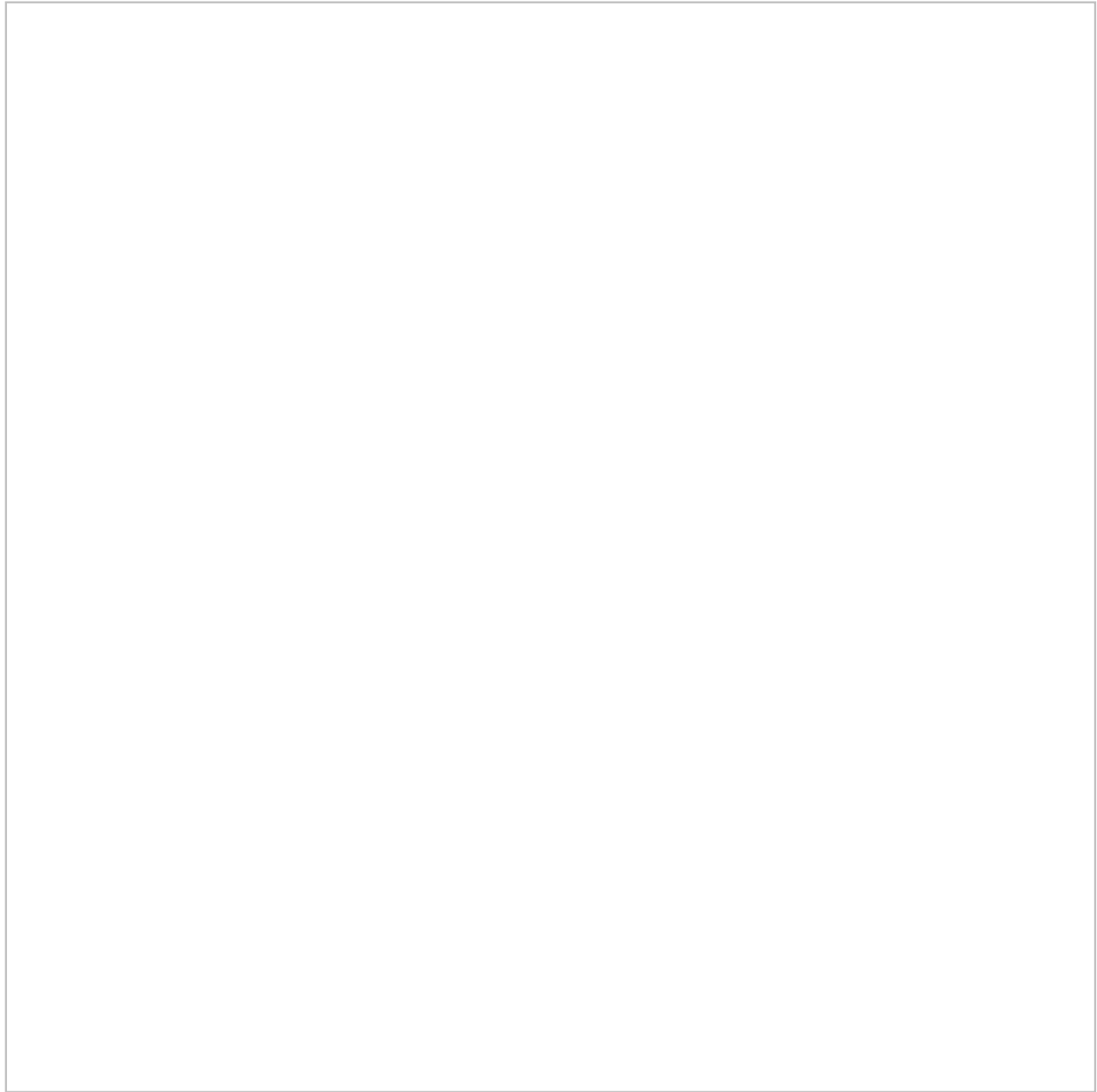
[Go to start of metadata](#)

The eLogbook replaces the paper DCPL and is required for longline catcher/processor vessels named on an LLP license with a Pacific cod CP hook-and-line endorsement for the BSAI who are directed fishing for Pacific cod in the BSAI and conducting groundfish CDQ fishing.

Register a New Logbook

Once you have logged into elandings you will need to select the operation that you want to register the logbook to.

- Select your *Operation*
- Click on the *Register Logbook* button.



On the *Register Logbook* page you will need to select the following:

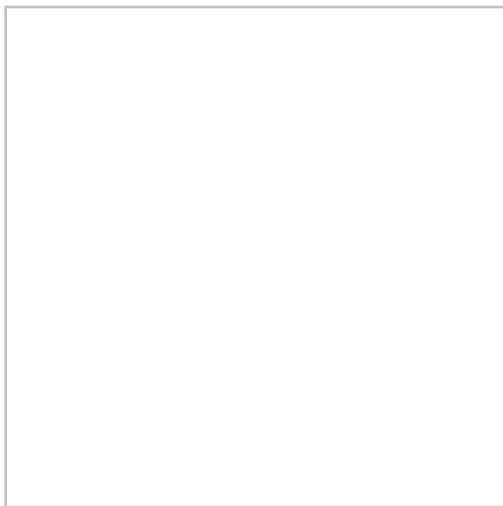
- Year
- Weight Units
- Depth Units

Click on the *Register Logbook* button.



You will be returned to the *Reports Menu* page.

- Select your Operation
- Click on the *Current Year Logbook* button

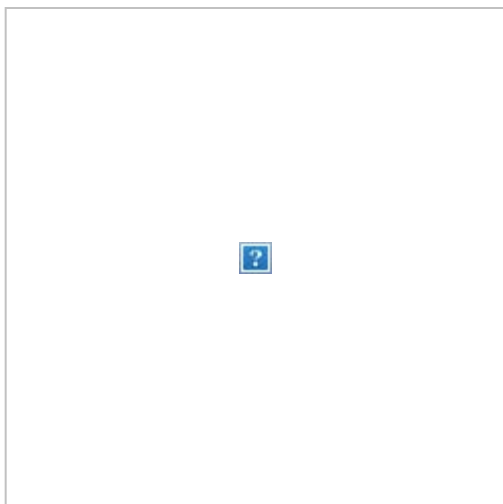


Enter Initial Voyage Information

Before you can make any set entries in your logbook, you will need to do the following three things:

- *Add a New Voyage*
- *Add Gear*
- *Go Active*

Click on the *New Voyage* button.

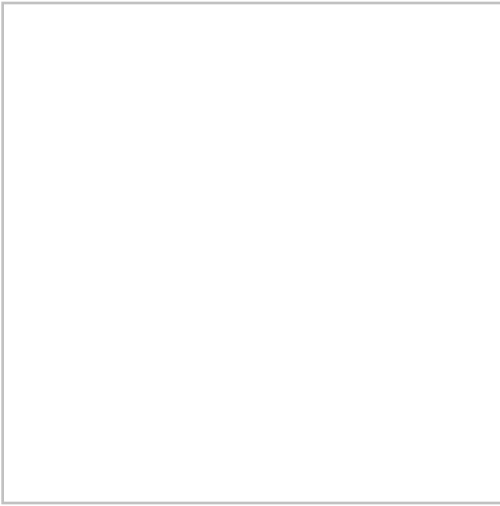


- The *New Voyage* page will appear, enter the following information:
 - *Start Date*: It should always be January 1st of the current year you will be fishing
 - *Crew Size* (even if it's only one or two)
 - *Operator Name*
 - *Weight Units*
 - *Observer 1*: if you are actively fishing on January 1st and have an observer on board, enter the applicable information here
 - *Cruise Number*
 - *Observer 2*: If you are actively fishing on January 1st and have a 2nd observer on board, enter the applicable information here
 - *Cruise Number*
 - *Operator IFQ permit*: enter if applicable to this Voyage
- Click on the *Save* button



Once you have entered the *New Voyage* information and saved it, you will be returned to the *eLogbook* page

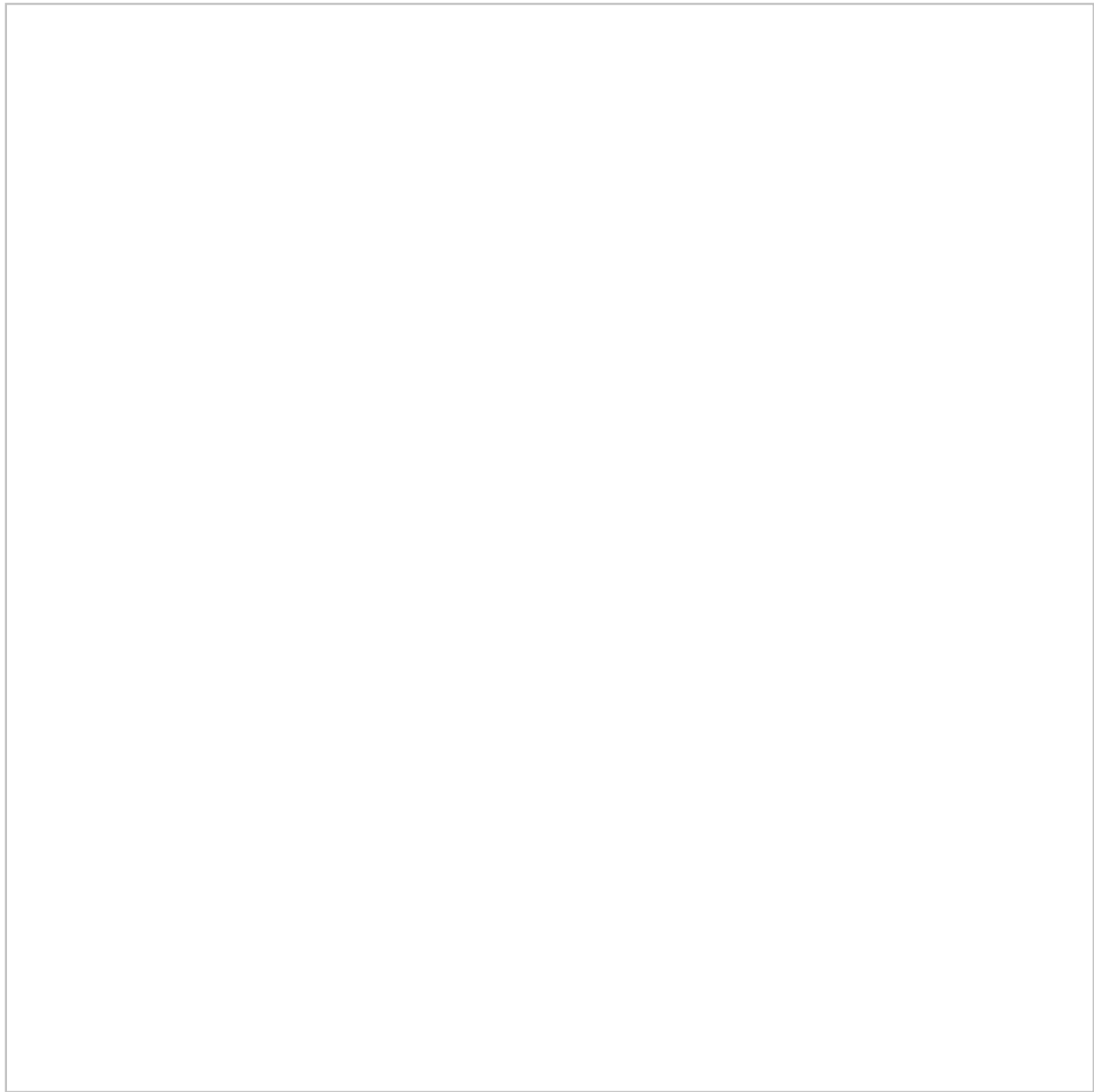
- Click on the *Add Gear* button.



On the *Gear Entry* page enter the following applicable information:

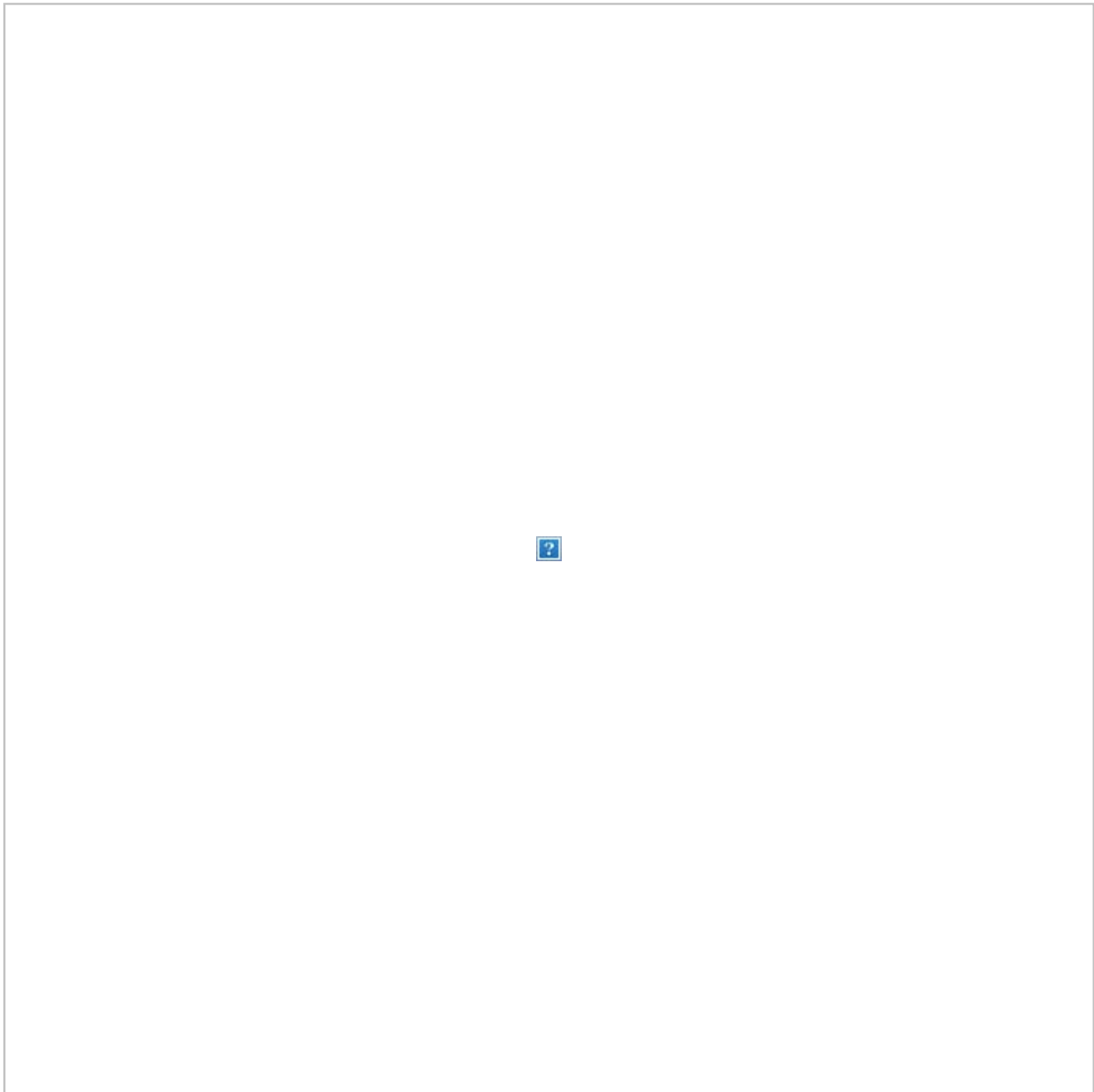
- *Gear Code*: 61 (hook and line) or 91 (pot gear)
- *Description*: ONLY FOR POT GEAR
- *Gear Type*: conventional fixed hook, tub fixed hook, autoline, or snap
- *Length of Skate*
- *Hook Size*: if you have multiple hook sizes, that can now be accounted for using the % fields
- *Hook Spacing*
- *Hooks per Skate*
- *Percent with Swivels*
 - *Swivels on hooks*
 - *Swivels on snaps*
- Click *Save*

If you have more than one gear type, you can add them one after another if you click on the *Save and Continue* button after each entry.



Go Active

- You will be returned to the *eLogbook* page
- Click on the *Go Active* button if you are actually engaged in fishing activity at this time.
- Enter your *Go Active* date (cannot be in the future)
 - If you are not actively fishing when you register your logbook, you can ignore this step until you do actually *Go Active*.



If you are not actually engaged in fishing activity yet, you will need to ***Go Inactive*** until you actually begin a fishing trip.

- Click on the date (01/01/2014) in blue text in the first column
- Click on the ***Go Inactive*** button



A page will appear requiring a reason for going inactive. Enter the appropriate comment and click on the ***Save*** button.



You should create a *New Voyage* when you decide to *Go Active* again.

eLogbook Set Entries



You will be taken to the page shown below where you will need to click on the **Add Set** button to begin making your entries.



Set Deploy

Enter the following information:

- The *Set Number* will auto-fill for you but can be modified as needed
- *Gear Type* can be selected from the drop down menu if you have more than one type
- *Management Program* (no need to enter management *Program ID* unless fishing under a CDQ program)
- *Time set* (needs to be in military format)
- *Begin* and *End Depths*
- *Begin Latitude* and *Begin Longitude* (there are multiple ways to enter lat/long, see table at the end of this section)
- *Begin/End Buoy* numbers - this is an Optional field
- *End Latitude* and *End Longitude* (there are multiple ways to enter lat/long, see table at the end of this section)
- *Bird Avoidance Gear* select the appropriate one from the drop down menu
- *Federal Reporting Area*
- *Target Species* - more than one can be entered as applicable
- *Number of Skates or Pots Set*

Click on *Save* when you're done.



- You will be taken back to the *eLogbook Entries* page as shown below.



- Click on *Set 1* in blue text to return to the *Set Deploy* screen. Click on the *Add Retrieval* button.



Set Retrieval Entry

- Enter the *Time Hauled*
- Enter the *Hail Weight* [P Cod Flow Scale Weight.pdf](#)
- Enter *Number of Skates or Pots Lost*



If you have a haul that crosses days:

- In the *Time Hauled* data field enter the day in mm/dd format, hit the space bar once and enter the time the set was retrieved.
- You can see the proper format in the example below.



After saving the Haul Retrieval you will be brought back to the eLogbook Entry screen.

- You will need to click on *Set 1* to return to that screen so you can access the *Add Catch* button.



Catch Entry

- Click on the *Add Catch* button



Enter the following information:

- Species code
- Weight (units can be changed by using the drop down menu)
- Count (Id salmon species)
- Disposition code (what you intend to do with the fish)

Click on Save.



- No labels
- [Powered by Atlassian](#)
- Printed by Atlassian Confluence 6.0.0-OD-2015.50.1-0003, Team Collaboration Software.
- [Terms of Use](#)
- [Answers](#)
- [Maintenance Schedule](#)

[Atlassian](#)