

Public Health in Indian Country Capacity Scan: NIHB Pre-Launch Webinar

Stephen Valliere, MPH
Public Health Projects Coordinator

<<DATE>>

2017/18 NIHB Scan - Key Dates

- Scan launch: <<TBD>>
- Scan closes: <<3 months from launch>>



Overview

- Background
- Current Project
- Benefit to Tribes
- Scan (Assessment)
- Administration
- Launch
- Logistics
- Submission
- FAQ



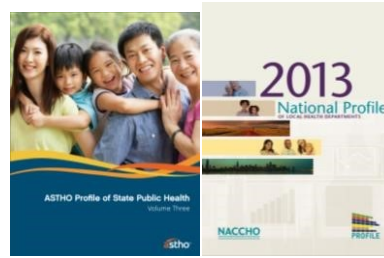
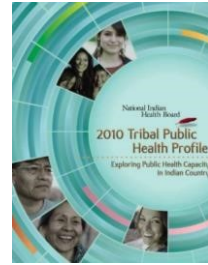
- Questions?

Background & Current Project

- NIHB 2009 Tribal Public Health Profile – only national level information on Tribal public health capacity
- NIHB 2018 Tribal Public Health Profile – will provide parity for Indian Country information needs with states, cities and counties
- Profile of State Health Department Data - Association of State and Territorial Health Officials
- Profile of Local Health Department Data Health - National Association of County and City Health Officials



- Funded by CDC



Benefits to Tribes & Tribal Organizations

- Identification of Tribal public health system:
 - Needs • Priorities
 - Opportunities for technical assistance
- Establish baseline information that can be used to gauge progress over time



Scan Administration

- Administered online through Qualtrics web assessment platform (www.Qualtrics.com)
- An email containing a link to the scan will be sent from NIHB on <<DATE TBD>> to Directors of:
 - Tribal Health Departments
 - Tribal Public Health Departments

- Tribal Health Organizations/Consortiums



Scan Table of Contents

Section/Topic
Contact Information
Demographic/Background Activities
Public Health Activities
Public Health Workforce
Public Health Priorities and Needs
Public Health Governing Entity
Additional Comments



Scan Launch

- Respondents:
 - Tribal Health Department Directors, Tribal Public Health Department Directors, Alaska Native Health Consortium Directors
- Scan response by web
 - By request, NIHB can provide hard copy OR walk through via telephone
 - One-on-one technical assistance, as needed, from NIHB



Logistics

- Scan can be completed in multiple sittings



Saving the Data

- To save responses and progress through each section, respondents will click the “Save and Continue” button at the bottom of the web page



Save and Continue



Scan Navigation

- Respondents can return to the previous section



Previous Section

- However, data will not be recorded until the page is submitted

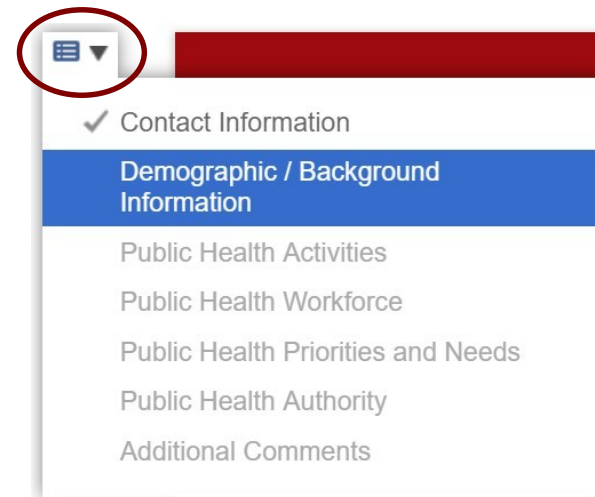


Scan Navigation

- Scan progress is displayed at the bottom of the web page



- The Table of Contents and completed sections (indicated by ✓) can be viewed



via the top left corner dropdown menu



Scan Submission

- After the clicking the final “Save and Continue” button, respondents will not be able to re-enter the scan

Final Survey Submission

This is the end of the survey. After clicking **Save and Continue** you will not be able to re-enter the survey. Please go back to previous sections to make any revisions to the survey answers before clicking the final **Save and Continue** button below.

0% 100%

Save and Continue

If you have questions or need assistance, please contact Stephen Valliere, Public Health Coordinator at the National Indian Health Board at 202-507-4070 ext 4082 or svalliere@nihb.org.

Scan Submission



We thank you for your time spent taking this survey.
Your response has been recorded.

0%  100%

If you have questions or need assistance, please contact Stephen Valliere, Public Health Coordinator at the National Indian Health Board at 202-507-4070 ext 4082 or svalliere@nihb.org.

National Indian
Health Board 

FAQs

- Do I need any log-in information in order to fill out the scan?
 - No log-in information is required to access the scan
 - Each respondent will receive a unique, trackable link to the scan



FAQs

- Can I get a Word version of the scan?
 - Yes—please contact NIHB to request a hard copy of the scan, svalliere@nihb.org
- Who do I contact with questions about the scan?
 - Stephen Valliere, 202-507-4082 svalliere@nihb.org



FAQs

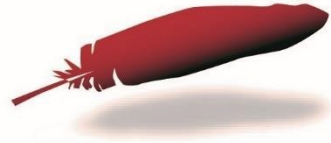
- What about public health work that occurs outside of my department?
 - Respondents completing the scan should take into account any and all public health work occurring within the Tribal community



FAQs

- How long will completing the scan take?
 - The estimated response time based on pilot testing is 60 minutes
- How will the data and my information be shared?
 - NIHB will house all the data on a secure server.





Questions? NIHB Contacts

- Stephen Valliere, MPH
Public Health Projects Coordinator
svalliere@nihb.org
- Breannon Babbel, PhD
Research Manager bbabbel@nihb.org
- Carolyn Angus-Hornbuckle, JD



National Indian Health Board



Deputy Director & Director of Public Health Policy and Programs chornbuckle@nihb.org

Thank you!

Stephen Valliere
Public Health Projects Coordinator
svalliere@nihb.org www.nihb.org

