



# **Metrics and Quality Measures for Behavioral Health Clinics**

## **Technical Specifications and Resource Manual**

**(Volume 2)**

**April 2016**

# Contents

- Contents ..... 2
- GENERAL APPENDICES..... 4
  - Appendix A. Measurement Period for Denominators and Numerators for the BHC Metrics and Quality Measures ..... 5
  - Appendix B. BHC Value Set Directory User Manual ..... 16
  - Appendix C. Guidance for Selecting Sample Sizes for HEDIS® Hybrid Measures..... 21
  - Appendix D. Definitions of Practitioner Types ..... 23
- APPENDICES FOR SPECIFIC MEASURES ..... 25
  - Appendix ROUT: Routine Care Needs ..... 26
  - Appendix I-EVAL: Time to Initial Evaluation ..... 28
  - Appendix TX-EVAL: Time to Comprehensive Person and Family-Centered Diagnostic and Treatment Planning Evaluation..... 33
  - Appendix SUIC: Deaths by Suicide ..... 36
  - Appendix DOC.A: Documentation of Current Medications in the Medical Record ..... 37
  - Appendix DOC.B: Documentation of Current Medications in the Medical Record ..... 40
  - Appendix BMI-SF.A: Preventive Care & Screening: Body Mass Index (BMI) Screening & Follow-Up.. 41
  - Appendix BMI-SF.B. Codes Relevant to Preventive Care & Screening: Adult Body Mass Index (BMI) Screening and Follow-Up..... 44
  - Appendix CBP-BH. Controlling High Blood Pressure ..... 45
  - Appendix TSC.A: Preventive Care & Screening: Tobacco Use: Screening & Cessation Intervention ... 47
  - Appendix TSC.B: Preventive Care & Screening: Tobacco Use: Screening & Cessation Intervention ... 50
  - Appendix ASC.A: Preventive Care & Screening: Unhealthy Alcohol Use: Screening & Brief Counseling ..... 51
  - Appendix ASC.B: Preventive Care & Screening: Unhealthy Alcohol Use: Screening & Brief Counseling ..... 54
  - Appendix SRA-BH-C: eCQM Flow for Reporting the Suicide Risk Assessment (SRA-BH-C) Measure... 55
  - Appendix SRA-A.A: eCQM Flow for Reporting the Suicide Risk Assessment (SRA-A) Measure ..... 62
  - Appendix SRA-A.B: Major Depressive Disorder (MDD): Suicide Risk Assessment..... 67
  - Appendix SRA-A.C: Major Depressive Disorder (MDD): Suicide Risk Assessment..... 68
  - Appendix CDF-BH.A: Screening for Clinical Depression and Follow-Up Plan ..... 71
  - Appendix CDF-BH.B: Screening for Clinical Depression and Follow-Up Plan..... 75
  - Appendix DEP-REM-12. Depression Remission at Twelve Months..... 76
  - Appendix HOU: Housing Status ..... 79

Appendix SU-A. ICD-10-CM Codes Relevant to Calculating Suicide Attempts.....	80
Appendix PCR-BH: Plan All-Cause Readmissions Rate .....	134
Appendix AMS-BD: Adherence to Mood Stabilizers for Individuals with Bipolar I Disorder.....	136
Appendix SAA-BH: Adherence to Antipsychotics for Individuals with Schizophrenia.....	140
Appendix ADD-BH: Follow-Up Care for Children Prescribed Attention-Deficit Hyperactivity Disorder (ADHD) Medication .....	142
Appendix AMM-BH: Antidepressant Medication Management.....	143

## **GENERAL APPENDICES**

## Appendix A. Measurement Period for Denominators and Numerators for the BHC Metrics and Quality Measures

The following tables provide the measurement periods for denominators and numerators as well as the continuous enrollment period, where applicable. For the sake of simplicity, examples of measurement periods and measurement years are provided that rely on the calendar year. For CCBHCs, however, the measurement year (and the measurement period) will vary, depending on the demonstration start date, although the measurement year will always be a full 12 month period. For example, a CCBHC measurement year beginning on March 1, 2017 will end on February 28, 2018 and measurement periods will be in relation to that measurement year. To ascertain measurement periods that correspond to potential CCBHC measurement years, please see the last worksheet in the data-reporting templates.

**Table A1. Clinic-Reported Measures – Measurement Period<sup>1</sup>**

Measure	Denominator <sup>2</sup>	Numerator	Continuous Enrollment Period <sup>3</sup>
Routine Care Needs (ROUT) (cont'd)	The measurement year and the 6 months before (e.g.,	The measurement year (e.g., Jan. 1, 2017 – Dec. 31,	NA

<sup>1</sup> For some measures, the measurement period for the numerator, denominator, or continuous enrollment period varies depending on a specified date for each consumer (such as consumer birthdates, prescription or treatment start dates, and discharge dates). The measurement period defined in these tables identifies the full range of possible dates that will be used to calculate the measure for all measure-eligible consumers. Refer to the specification for additional details.

<sup>2</sup> When reporting each measure, states and BHC providers should report the measurement period they used for the denominator (and the numerator) in the applicable “Start Date” and “End Date” fields in Section B of the data-reporting template. Some measures also require states and BHC providers to review utilization or enrollment prior to this period to identify the measure-eligible population. For these measures, two date ranges are included in this table. The first date range should be used to populate the Start Date and End Date fields, while the second date range defines these prior review periods and should not be included in the Start Date and End Date fields. For example, the AMM-BH measure instructs states to identify enrollees with antidepressant prescriptions that started May 1, 2016 – April 30, 2017 (the first date range). However, states will also need to review enrollee medication history for 105 days prior to the start of the index prescription (the second date range). States and BHC providers should enter “May 1, 2016” in the Start Date field and “April 30, 2017” in the End Date field. States should note any deviations to any measurement period (numerator, denominator, continuous enrollment) in Section E (Adherence to Measure Specifications) of the data-reporting template.

<sup>3</sup> Refer to the measure specification for information on allowable gaps in the continuous enrollment period.

Appendix A. Measurement Period for Denominators and Numerators for the BHC Metrics and Quality Measures

<b>Measure</b>	<b>Denominator<sup>2</sup></b>	<b>Numerator</b>	<b>Continuous Enrollment Period<sup>3</sup></b>
Routine Care Needs (ROUT) (cont'd)	July 1, 2016 – Dec. 31, 2017)	2017)	
Time to Initial Evaluation (I-EVAL)	The measurement year excluding the last 30 days of the measurement year and including the 6 months before (e.g., July 1, 2016 - Dec. 1, 2017)	The measurement year (e.g., Jan. 1, 2017 – Dec. 31, 2017)	NA
Time to Comprehensive Person and Family-Centered Diagnostic and Treatment Planning Evaluation (TX-EVAL)	The measurement year excluding the last 90 days of the measurement year and including the 6 months before (e.g., July 1, 2016 – Oct. 2, 2017)	The measurement year (e.g., Jan. 1, 2017 – Dec. 31, 2017)	NA
Deaths by Suicide (SUIC)	The measurement year (e.g., Jan. 1, 2017 – Dec. 31, 2017)	The measurement year (e.g., Jan. 1, 2017 – Dec. 31, 2017)	NA
Documentation of Current Medications in the Medical Record (DOC)	The measurement year (e.g., Jan. 1, 2017 – Dec. 31, 2017)	The measurement year (e.g., Jan. 1, 2017 – Dec. 31, 2017)	NA
Preventive Care & Screening: Adult Body Mass Index (BMI) Screening & Follow-Up (BMI-SF)	The measurement year (e.g., Jan. 1, 2017 – Dec. 31, 2017)	The measurement year and the previous 6 months (e.g., Jul. 1, 2016 – Dec. 31, 2017)	NA

Appendix A. Measurement Period for Denominators and Numerators for the BHC Metrics and Quality Measures

<b>Measure</b>	<b>Denominator<sup>2</sup></b>	<b>Numerator</b>	<b>Continuous Enrollment Period<sup>3</sup></b>
Body Mass Index Assessment for Children/Adolescents (WCC-BH)	The measurement year (e.g., Jan. 1, 2017 – Dec. 31, 2017)	The measurement year (e.g., Jan. 1, 2017 – Dec. 31, 2017)	The measurement year
Controlling High Blood Pressure (Adult) (CBP-BH)	The measurement year (e.g., Jan. 1, 2017 – Dec. 31, 2017)  Hypertension diagnosis: Confirm anytime during the enrollee’s history during or before the first 6 months of the measurement year	The measurement year <sup>4</sup> (e.g., Jan. 1, 2017 – Dec. 31, 2017)	The measurement year
Preventive Care & Screening: Tobacco Use: Screening & Cessation Intervention (TSC)	The measurement year (e.g., Jan. 1, 2017 – Dec. 31, 2017)	The measurement year and the prior year (e.g., Jan. 1, 2016 – Dec. 31, 2017)	NA
Preventive Care & Screening: Unhealthy Alcohol Use: Screening & Brief Counseling (ASC)	The measurement year (e.g., Jan. 1, 2017 – Dec. 31, 2017)	The measurement year and the prior year (e.g., Jan. 1, 2016 – Dec. 31, 2017)	NA

<sup>4</sup> Blood pressure reading must occur after the diagnosis of hypertension was made.

Appendix A. Measurement Period for Denominators and Numerators for the BHC Metrics and Quality Measures

<b>Measure</b>	<b>Denominator<sup>2</sup></b>	<b>Numerator</b>	<b>Continuous Enrollment Period<sup>3</sup></b>
Child and Adolescent Major Depressive Disorder: Suicide Risk Assessment (SRA-BH-C)	The measurement year (e.g., Jan. 1, 2017 – Dec. 31, 2017)	The measurement year (e.g., Jan. 1, 2017 – Dec. 31, 2017)	NA
Adult Major Depressive Disorder (MDD): Suicide Risk Assessment (SRA-A)	The measurement year (e.g., Jan. 1, 2017 – Dec. 31, 2017)	The measurement year (e.g., Jan. 1, 2017 – Dec. 31, 2017)	NA
Screening for Clinical Depression and Follow-Up Plan (CDF-BH)	The measurement year (e.g., Jan. 1, 2017 – Dec. 31, 2017)	The measurement year (e.g., Jan. 1, 2017 – Dec. 31, 2017)	NA
Depression Remission at Twelve Months (DEP-REM-12)	The measurement year, starting for each person's individual index date (e.g., Jan. 1, 2017 – Dec. 31, 2017 for index date Jan. 1, 2017)	Begins on the index date for the individual during the measurement year and ends at the point 12 months and 30 days later) (e.g., for index date Jan. 1, 2017, Jan. 1, 2017 – Jan. 30, 2018)	NA



**Table A2. State-Reported Measures – Measurement Period<sup>5</sup>**

<b>Measure</b>	<b>Denominator<sup>6</sup></b>	<b>Numerator</b>	<b>Continuous Enrollment Period<sup>7</sup></b>
Housing Status (HOU)	The measurement year, divided into 2 equal parts (e.g., Jan. 1, 2017 – Jun. 30, 2017 and Jul. 1, 2017 – Dec. 31, 2017)	The measurement year, divided into 2 equal parts (e.g., Jan. 1, 2017 – Jun. 30, 2017 and Jul. 1, 2017 – Dec. 31, 2017)	NA
Suicide Attempts (SU-A)	The first 11 months of the measurement year (e.g., Jan. 1, 2017 – Nov. 30, 2017)	The measurement year (e.g., Jan. 1, 2017 – Dec. 31, 2017)	The measurement year
Patient Experience of Care Survey (PEC)	The measurement year (e.g., Jan. 1, 2017 – Dec. 31, 2017)	The measurement year (e.g., Jan. 1, 2017 – Dec. 31, 2017)	NA

<sup>5</sup> For some measures, the measurement period for the numerator, denominator, or continuous enrollment period varies depending on a specified date for each consumer (such as consumer birthdates, prescription or treatment start dates, and discharge dates). The measurement period defined in these tables identifies the full range of possible dates that will be used to calculate the measure for all measure-eligible consumers. Refer to the specification for additional details.

<sup>6</sup> When reporting each measure, states and BHC providers should report the measurement period they used for the denominator (and the numerator) in the applicable “Start Date” and “End Date” fields in Section B of the data-reporting template. Some measures also require states and BHC providers to review utilization or enrollment prior to this period to identify the measure-eligible population. For these measures, two date ranges are included in this table. The first date range should be used to populate the Start Date and End Date fields, while the second date range defines these prior review periods and should not be included in the Start Date and End Date fields. For example, the AMM-BH measure instructs states to identify enrollees with antidepressant prescriptions that started May 1, 2016 – April 30, 2017 (the first date range). However, states will also need to review enrollee medication history for 105 days prior to the start of the index prescription (the second date range). States and BHC providers should enter “May 1, 2016” in the Start Date field and “April 30, 2017” in the End Date field. States should note any deviations to any measurement period (numerator, denominator, continuous enrollment) in Section E (Adherence to Measure Specifications) of the data-reporting template.

<sup>7</sup> Refer to the measure specification for information on allowable gaps in the continuous enrollment period.

Appendix A. Measurement Period for Denominators and Numerators for the BHC Metrics and Quality Measures

<b>Measure</b>	<b>Denominator<sup>6</sup></b>	<b>Numerator</b>	<b>Continuous Enrollment Period<sup>7</sup></b>
Youth/Family Experience of Care Survey (Y/FEC)	The measurement year (e.g., Jan. 1, 2017 – Dec. 31, 2017)	The measurement year (e.g., Jan. 1, 2017 – Dec. 31, 2017)	NA
Follow-Up After Emergency Department Visit for Mental Illness (FUM)	The measurement year less the last 30 days of the measurement year (e.g., Jan. 1, 2017 – Dec. 1, 2017)	The measurement year (e.g., Jan. 1, 2017 – Dec. 31, 2017)	Date of emergency department visit through 30 days after the ED visit
Follow-Up After Emergency Department Visit for Alcohol and Other Drug Dependence (FUA)	The measurement year less the last 30 days of the measurement year (e.g., Jan. 1, 2017 – Dec. 1, 2017)	The measurement year (e.g., Jan. 1, 2017 – Dec. 31, 2017)	Date of emergency department visit through 30 days after the ED visit
Plan All-Cause Readmissions Rate (PCR-BH)	The measurement year, measured from the discharge date, less the last 30 days of the measurement year (e.g., Jan. 1, 2017 – Dec. 1, 2017)	The measurement year (30 days following IHS discharge date) (e.g., Jan. 1, 2017 – Dec. 31, 2017)	365 days prior to the Index Discharge Date through 30 days after the Index Discharge Date (e.g., (365 days prior to IHS discharge date through 30 days after the IHS discharge date)
Diabetes Screening for People with Schizophrenia or Bipolar Disorder Who Are Using Antipsychotic Medications (SSD)	The measurement year and the prior year (e.g., Jan. 1, 2016 – Dec. 31, 2017)	The measurement year (e.g., Jan. 1, 2017 – Dec. 31, 2017)	The measurement year

Appendix A. Measurement Period for Denominators and Numerators for the BHC Metrics and Quality Measures

<b>Measure</b>	<b>Denominator</b>	<b>Numerator</b>	<b>Continuous Enrollment Period</b>
Diabetes Care For People With Serious Mental Illness: Hemoglobin A1c (HbA1c) Poor Control (>9.0%) (SMI-PC)	The measurement year and the prior year (e.g., Jan. 1, 2016 – Dec. 31, 2017)	The measurement year (e.g., Jan. 1, 2017 – Dec. 31, 2017)	The measurement year and the prior year
Metabolic Monitoring for Children and Adolescents on Antipsychotics (APM)	The measurement year (e.g., Jan. 1, 2017 – Dec. 31, 2017)	The measurement year (e.g., Jan. 1, 2017 – Dec. 31, 2017)	The measurement year
Cardiovascular Monitoring For People With Cardiovascular Disease and Schizophrenia (SMC)	The measurement year and the prior year (e.g., Jan. 1, 2016 – Dec. 31, 2017)	The measurement year (e.g., Jan. 1, 2017 – Dec. 31, 2017)	The measurement year and the prior year
Adherence to Mood Stabilizers for Individuals with Bipolar I Disorder (AMS-BD)	The measurement year (e.g., Jan. 1, 2017 – Dec. 31, 2017)	The measurement year (e.g., Jan. 1, 2017 – Dec. 31, 2017)	The measurement year
Adherence to Antipsychotics for Individuals with Schizophrenia (SAA-BH)	Index prescription start date (IPSD) during the measurement year (e.g., Jan. 1, 2017 – Dec. 31, 2017)	IPSD during the measurement year (e.g., Jan. 1, 2017 – Dec. 31, 2017)	The measurement year
Adult Follow-Up After Hospitalization for Mental Illness (FUH-BH-A) (cont'd)	The measurement year measured from the discharge date, less the last 30 days of the measurement	7 day follow-up: The measurement year measured from the discharge date through 7 days after the	The measurement year (discharge date through 30 days after discharge date)

Appendix A. Measurement Period for Denominators and Numerators for the BHC Metrics and Quality Measures

<b>Measure</b>	<b>Denominator</b>	<b>Numerator</b>	<b>Continuous Enrollment Period</b>
Adult Follow-Up After Hospitalization for Mental Illness (FUH-BH-A) (cont'd)	year (e.g., Jan. 1, 2017 – Dec. 1, 2017)	<p>discharge date (e.g., January 1, 2017 – December 8, 2017)</p> <p>30 day follow-up: The measurement year measured from the discharge date through 30 days after discharge date (e.g., Jan. 1, 2017 – Dec. 31, 2017)</p>	
Child Follow-Up After Hospitalization for Mental Illness (FUH-BH-C)	The measurement year measured from the discharge date, less the last 30 days of the measurement year (e.g., Jan. 1, 2017 – Dec. 1, 2017)	<p>7 day follow-up: The measurement year measured from the discharge date through 7 days after the discharge date (e.g., January 1, 2017 – December 8, 2017)</p> <p>30 day follow-up: The measurement year measured from the discharge date through 30 days after discharge date (e.g., Jan. 1, 2017 – Dec. 31, 2017)</p>	The measurement year (discharge date through 30 days after discharge date)

Appendix A. Measurement Period for Denominators and Numerators for the BHC Metrics and Quality Measures

<b>Measure</b>	<b>Denominator</b>	<b>Numerator</b>	<b>Continuous Enrollment Period</b>
<p>Follow-Up Care for Children Prescribed Attention-Deficit/Hyperactivity Disorder (ADHD) Medication (ADD-BH)</p>	<p>For the denominator, two measurement periods are used:</p> <p>Index prescription start date (IPSD): 10 months before the measurement year begins to 2 months after the measurement year begins (e.g., March 1, 2016 – February 28, 2017)</p> <p>Negative medication history review: The time period between 120 days before the IPSD measurement period begins and 120 days before the IPSD measurement period ends (e.g., November 2, 2015 – October 31, 2016)</p>	<p>For the numerator, two measurement periods are used:</p> <p>Initiation Phase: The time period between 30 days after the IPSD measurement period begins and 30 days after the IPSD measurement period ends (e.g., March 31, 2016 – March 30, 2017)</p> <p>Continuation and Maintenance Phase: The time period between 300 days after the IPSD measurement period begins and 300 days after the IPSD measurement period ends (e.g., December 26, 2016 – December 25, 2017)</p>	<p>Initiation Phase: 120 days (4 months) prior to the IPSD through 30 days (1 month) after the IPSD (e.g., November 1, 2015 – March 30, 2017)</p> <p>Continuation Phase: 120 days prior to IPSD through 300 days after the IPSD (e.g., November 1, 2015 – December 25, 2017)</p>
<p>Antidepressant Medication Management (AMM-BH) (cont'd)</p>	<p>For the denominator, two measurement periods are used:</p> <p>Index prescription start date (IPSD): The time period</p>	<p>For the numerator, two measurement periods are used:</p> <p>Acute Phase: The time period between 114 days</p>	<p>105 days (3 months) prior to the IPSD through 231 days after the IPSD (e.g., Jan. 16, 2016 – Dec. 17, 2017)</p>

Appendix A. Measurement Period for Denominators and Numerators for the BHC Metrics and Quality Measures

<b>Measure</b>	<b>Denominator</b>	<b>Numerator</b>	<b>Continuous Enrollment Period</b>
Antidepressant Medication Management (AMM-BH) (cont'd)	<p>between 7 months before the measurement year begins and 4 months after the measurement year begins (e.g., June 1, 2016 – April 30, 2017)</p> <p>Negative medication history review: The time period between 105 days before the IPSD measurement period begins and 105 days before the IPSD measurement period ends (e.g., February 17, 2016 – January 15, 2017)</p>	<p>after the IPSD measurement period begins and 114 days after the IPSD measurement period ends (e.g., September 23, 2016 – August 22, 2017)</p> <p>Continuation Phase: The time period between 231 days after the IPSD measurement period begins and 231 days after the IPSD measurement period ends (e.g., January 18, 2017 – December 17, 2017)</p>	
Initiation and Engagement of Alcohol and Other Drug (AOD) Dependence Treatment (IET-BH) (cont'd)	<p>For the denominator, two measurement periods are used:</p> <p>The Index Episode Start Date (IESD) measurement period is the first 10 months and 15 days of the measurement year. (e.g., Jan. 1, 2017 – Nov. 15, 2017)</p>	<p>For the numerator, two measurement periods are used:</p> <p>The Initiation of AOD Treatment measurement period covers the 13 days following the IESD. It begins on the 1<sup>st</sup> day of the first month and ends 13 days after the measurement</p>	<p>60 days (2 months) prior to the IESD through 44 days after the IESD (105 total days)</p> <p>(e.g., Nov. 1, 2016 – Dec. 29, 2017)</p>

Appendix A. Measurement Period for Denominators and Numerators for the BHC Metrics and Quality Measures

<b>Measure</b>	<b>Denominator</b>	<b>Numerator</b>	<b>Continuous Enrollment Period</b>
Alcohol and Other Drug (AOD) Dependence Treatment (IET-BH) (cont'd)	The Negative Diagnosis History Review measurement period looks back 60 days prior to the IESD. It begins 60 days prior to the measurement year and ends 60 days prior to the last possible date of the IESD during the measurement year. (e.g., Nov. 2, 2016 – Sept. 16, 2017)	<p>period for the IESD ends. (e.g., Jan. 1, 2017 – Nov. 28, 2017)</p> <p>The Engagement of AOD Treatment measurement period covers the 29 days following Initiation of AOD Treatment. It begins on the 2nd day of the first month and ends 29 days after the measurement period for Initiation. (e.g., Jan. 2, 2017 – Dec. 27, 2017)</p>	

## Appendix B. BHC Value Set Directory User Manual

### A. What Is the Value Set Directory?

Many measure specifications, including those for HEDIS® measures, reference value sets. A “value set” is the complete set of codes used to identify a service or condition included in a measure. The BHC Value Set Directory (VSD) includes all value sets and codes needed to report many of the BHC measures. This appendix is based upon one written for the HEDIS measures that are part of the CMS Child or Adult Core Sets for Medicaid/CHIP and describes how to use value sets in calculating measures in the BHC set, including for non-HEDIS measures.

### B. Structure of the Value Set Directory

The VSD (Excel workbook) contains the following spreadsheets:

- BHC Measures to Value Sets
- BHC Value Sets to Codes

The columns in the value sets are based on those included in the National Library of Medicine Value Set Authority Center (VSAC) standardized value set file. Not all columns will be needed for reporting BHC HEDIS measures, depending on how the state’s information systems are organized. All columns have been included in the value set to preserve consistency with the national standard.

**Note: Due to licensing restrictions NCQA is prohibited from providing an unlocked, editable version of the BHC Value Sets to Codes spreadsheet.**

### C. Measures to Value Sets

The BHC Measures to Value Sets spreadsheet lists value sets by measure and includes the elements in Table B.1.

**Table B.1. Measures to Value Sets**

Element Name	Element Description
Measure ID	The abbreviation for the measure
Measure Name	The measure name
Value Set Name	The value set name
Value Set OID	Unique identifier for the value set

Use the BHC Measures to Value Sets spreadsheet to identify all value sets used for a particular measure or to identify all measures that use a specific value set. For example, setting the Measure ID filter to “WCC” demonstrates that the Weight Assessment and Counseling: Body Mass Index Assessment for Children/Adolescents measure uses the following value sets:



Measure ID	Measure Name	Value Set Name	Value Set OID
WCC-BH	Weight Assessment and Counseling: Body Mass Index (BMI) Assessment for Children/Adolescents	BMI Percentile	2.16.840.1.113883.3.464.1004.1038
WCC-BH	Weight Assessment and Counseling: Body Mass Index (BMI) Assessment for Children/Adolescents	Pregnancy	2.16.840.1.113883.3.464.1004.1219

Setting the Value Set Name filter to “Pregnancy” identifies the three measures that use the value set.

Measure ID	Measure Name	Value Set Name	Value Set OID
CBP-BH	Controlling High Blood Pressure	Pregnancy	2.16.840.1.113883.3.464.1004.1219
PCR-BH	Plan All-Cause Readmissions	Pregnancy	2.16.840.1.113883.3.464.1004.1219
WCC-BH	Weight Assessment and Counseling: Body Mass Index Assessment for Children/Adolescents	Pregnancy	2.16.840.1.113883.3.464.1004.1219

#### D. Value Sets to Codes

The BHC Value Sets to Codes spreadsheet lists the codes included in each value set and includes the elements in Table B.2.

**Table B.2. Value Sets to Codes**

Element Name	Element Description
Value Set Name	The value set name
Value Set OID	Unique identifier for the value set
Value Set Version	The version date for the value set directory (2015-12-21 for federal fiscal year 2016 reporting)
Code	The code
Definition	The code definition <i>Note: The definition is not included for Uniform Bill,<sup>2</sup> CPT<sup>3</sup> or the American Dental Association’s Code on Dental Procedures and Nomenclature (CDT) codes due to licensing restrictions.</i>

Element Name	Element Description
Code System	<p>The code system for the code. Code systems are labeled as:</p> <p>CPT: Current Procedural Terminology</p> <p>HCPCS: Healthcare Common Procedure Coding System Level II</p> <p>ICD-10-CM: International Classification of Diseases, 10th Revision, Clinical Modification (Diagnosis codes)</p> <p>ICD-10-PCS: International Classification of Diseases, 10th Revision, Procedure Coding System (Procedure codes)</p> <p>ICD-9-CM: International Classification of Diseases, 9th Revision, Clinical Modification (Diagnosis codes)</p> <p>ICD-9-PCS: International Classification of Diseases, 9th Revision, Clinical Modification (Procedure codes)</p> <p>POS: CMS Place of Service</p> <p>UBREV: Uniform Bill (Revenue codes)</p> <p>UBTOB: Uniform Bill (Type of Bill codes)</p>
Code System OID	Unique identifier for the code system.
Code System Version	Code system version tracking number.

<sup>1</sup> Uniform Bill Codes (“UB Codes”) are protected under federal copyright laws and are owned by the American Hospital Association (AHA). The UB Codes in the HEDIS specifications are included with the permission of the AHA. The UB Codes contained in the HEDIS specifications may be used by health plans and other health care delivery organizations for the purpose of calculating and reporting HEDIS results or using HEDIS measure results for their internal quality improvement purposes. All other uses of the UB Codes require a license from the AHA. Software vendors and all others desiring to use the UB Codes in a commercial product to generate HEDIS results, or for any other use, must obtain a commercial use license directly from the AHA. To inquire about licensing, contact [ub04@healthforum.com](mailto:ub04@healthforum.com).

<sup>2</sup> CPT codes copyright 2015 American Medical Association. All rights reserved. CPT is a trademark of the AMA. No fee schedules, basic units, relative values or related listings are included in CPT. The AMA assumes no liability for the data contained herein. Applicable FARS/DFARS restrictions apply to government use.

Appendix B. BHC Value Set Directory User Manual

Use the Value Sets to Codes spreadsheet to identify all codes in a value set or to identify all value sets that use a particular code. For example, setting the Value Set Name filter to “Narcolepsy” demonstrates that the following codes are included in the value set.

<b>Value Set Name</b>	<b>Value Set OID</b>	<b>Value Set Version</b>	<b>Code</b>	<b>Definition</b>	<b>Code System</b>	<b>Code System OID</b>	<b>Code System Version</b>
Narcolepsy	2.16.840.1.113883.3.464.1004.1182	2015-12-21	347.01	Narcolepsy, with cataplexy	ICD-9-CM	2.16.840.1.113883.6.103	2014.1.13AA
Narcolepsy	2.16.840.1.113883.3.464.1004.1182	2015-12-21	347.11	Narcolepsy in conditions classified elsewhere, with cataplexy	ICD-9-CM	2.16.840.1.113883.6.103	2014.1.13AA
Narcolepsy	2.16.840.1.113883.3.464.1004.1182	2015-12-21	347.00	Narcolepsy, without cataplexy	ICD-9-CM	2.16.840.1.113883.6.103	2014.1.13AA
Narcolepsy	2.16.840.1.113883.3.464.1004.1182	2015-12-21	347.10	Narcolepsy in conditions classified elsewhere, without cataplexy	ICD-9-CM	2.16.840.1.113883.6.103	2014.1.13AA
Narcolepsy	2.16.840.1.113883.3.464.1004.1182	2015-12-21	G47.411	Narcolepsy with cataplexy	ICD-10-CM	2.16.840.1.113883.6.90	2014.0.0.13AA
Narcolepsy	2.16.840.1.113883.3.464.1004.1182	2015-12-21	G47.419	Narcolepsy without cataplexy	ICD-10-CM	2.16.840.1.113883.6.90	2014.0.0.13AA

<b>Value Set Name</b>	<b>Value Set OID</b>	<b>Value Set Version</b>	<b>Code</b>	<b>Definition</b>	<b>Code System</b>	<b>Code System OID</b>	<b>Code System Version</b>
Narcolepsy	2.16.840.1.113883.3.464.1004.1182	2015-12-21	G47.421	Narcolepsy in conditions classified elsewhere with cataplexy	ICD-10-CM	2.16.840.1.113883.6.90	2014.0.0.13AA
Narcolepsy	2.16.840.1.113883.3.464.1004.1182	2015-12-21	G47.429	Narcolepsy in conditions classified elsewhere without cataplexy	ICD-10-CM	2.16.840.1.113883.6.90	2014.0.0.13AA

Setting the Code filter to “002.3” demonstrates that the code is included in the following value set.

<b>Value Set Name</b>	<b>Value Set OID</b>	<b>Value Set Version</b>	<b>Code</b>	<b>Definition</b>	<b>Code System</b>	<b>Code System OID</b>	<b>Code System Version</b>
Acute Condition	2.16.840.1.113883.3.464.1004.1324	2015-12-21	002.3	Paratyphoid fever C	ICD-9-CM	2.16.840.1.113883.6.103	2014.1.13AA

**Appendix C. Guidance for Selecting Sample Sizes for HEDIS® Hybrid Measures**

This appendix provides additional information on when it may be feasible to use a sample size of less than 411 when the hybrid method is used. The sample size is based on the current year’s administrative rate<sup>8</sup> or the prior years reported rate. The guidance in the table below is designed to minimize the burden of medical record review, while providing an adequate sample size for calculating the measure.

**Table C.1. Determining Sample Sizes for Hybrid Measures when Data Are Available from the Current Year’s Administrative Rate or the Prior Year’s Reported Rate**

<b>Current Year’s Administrative Rate or the Prior Year’s Reported Rate</b>	<b>Minimum Sample Size</b>
Less than or equal to 50%	411
51%	411
52%	410
53%	410
54%	409
55%	407
56%	405
57%	403
58%	401
59%	398
60%	395
61%	392
62%	388
63%	384
64%	380
65%	376
66%	371
67%	366

<sup>8</sup> The administrative rate refers to the performance rate that is calculated using administrative data only, rather than from any medical record reviews.

Appendix C. Guidance for Selecting Sample Sizes for HEDIS® Hybrid Measures

<b>Current Year's Administrative Rate or the Prior Year's Reported Rate</b>	<b>Minimum Sample Size</b>
68%	360
69%	354
70%	348
71%	342
72%	335
73%	328
74%	321
75%	313
76%	305
77%	296
78%	288
79%	279
80%	270
81%	260
82%	250
83%	240
84%	229
85%	219
86%	207
87%	196
88%	184
89%	172
90%	159
91%	147
92%	134
93%	120
94%	106
Greater than or equal to 95%	100

Note: Truncate the decimal portion of the rate to obtain a whole number.

Appendix D. Definitions of Practitioner Types

**Appendix D. Definitions of Practitioner Types**

PRACTITIONER TYPE	DEFINITION
Mental Health Practitioner	<p>A practitioner who provides mental health services and meets any of the following criteria:</p> <ul style="list-style-type: none"> <li>• An MD or doctor of osteopathy (DO) who is certified as a psychiatrist or child psychiatrist by the American Medical Specialties Board of Psychiatry and Neurology or by the American Osteopathic Board of Neurology and Psychiatry; or, if not certified, who successfully completed an accredited program of graduate medical or osteopathic education in psychiatry or child psychiatry and is licensed to practice patient care psychiatry or child psychiatry, if required by the state of practice</li> <li>• An individual who is licensed as a psychologist in his/her state of practice, if required by the state of practice</li> <li>• An individual who is certified in clinical social work by the American Board of Examiners; who is listed on the National Association of Social Worker’s Clinical Register; or who has a master’s degree in social work and is licensed or certified to practice as a social worker, if required by the state of practice</li> <li>• A registered nurse (RN) who is certified by the American Nurses Credentialing Center (a subsidiary of the American Nurses Association) as a psychiatric nurse or mental health clinical nurse specialist, or who has a master’s degree in nursing with a specialization in psychiatric/mental health and two years of supervised clinical experience and is licensed to practice as a psychiatric or mental health nurse, if required by the state of practice</li> <li>• An individual (normally with a master’s or a doctoral degree in marital and family therapy and at least two years of supervised clinical experience) who is practicing as a marital and family therapist and is licensed or a certified counselor by the state of practice, or if licensure or certification is not required by the state of practice, who is eligible for clinical membership in the American Association for Marriage and Family Therapy</li> <li>• An individual (normally with a master’s or doctoral degree in counseling and at least two years of supervised clinical experience) who is practicing as a professional counselor and who is licensed or certified to do so by the state of practice, or if licensure or certification is not required by the state of practice, is a National Certified Counselor with Specialty Certification in Clinical Mental Health Counseling from the National Board for Certified Counselors (NBCC)</li> </ul>

## Appendix D. Definitions of Practitioner Types

<b>PRACTITIONER TYPE</b>	<b>DEFINITION</b>
Obstetrical/Gynecological (OB/GYN) and Other Prenatal Care Practitioner	<p>Includes:</p> <ul style="list-style-type: none"> <li>• Physicians certified as obstetricians or gynecologists by the American Medical Specialties Board of Obstetrics or Gynecology or the American Osteopathic Association; or, if not certified, who successfully completed an accredited program of graduate medical or osteopathic education in obstetrics and gynecology</li> <li>• Certified nurse midwives and nurse practitioners who deliver prenatal care services in a specialty setting (under the direction of an OB/GYN certified or accredited provider)</li> </ul>
Primary Care Practitioner (PCP)	<ul style="list-style-type: none"> <li>• A physician or nonphysician (e.g., nurse practitioner, physician assistant) who offers primary care medical services</li> <li>• Licensed practical nurses and registered nurses are not considered PCPs</li> </ul>
Prescribing Practitioner	A practitioner with prescribing privileges, including nurse practitioners, physician assistants, and other non-MDs who have the authority to prescribe medications



## **APPENDICES FOR SPECIFIC MEASURES**

## Appendix ROUT: Routine Care Needs

Percentage of new consumers requesting services who were determined to need routine care

### EXAMPLE

Assuming 10 new consumers during the measurement year (Consumers A through J) with the data shown in the table below, the percentage of new consumers, stratified by payer status, presenting with routine (R) vs non-routine (N) needs is shown on the last line of the table below.

<b>Consumer</b>	<b>Medicaid</b>	<b>Medicare &amp; Medicaid</b>	<b>Neither</b>	<b>Total</b>
A	R			R
B		R		R
C	N			N
D	N			N
E		N		N
F			N	N
G	R			R
H	R			R
I		N		N
J			R	R
<b>Total</b>	<b>5</b>	<b>3</b>	<b>2</b>	<b>10</b>
<b>Routine needs</b>	<b>3</b>	<b>1</b>	<b>1</b>	<b>5</b>
<b>Non-routine needs</b>	<b>2</b>	<b>2</b>	<b>1</b>	<b>5</b>
<b>Percent with routine needs</b>	<b>3/5=60%</b>	<b>1/3=33%</b>	<b>1/2=50%</b>	<b>5/10=50%</b>

Metrics interpretation: For the Medicaid eligible population, 60% were identified as having routine needs; 33% of those with both Medicaid and Medicare had routine needs;

## Appendix ROUT: Routine Care Needs

and 50% of those with neither had routine needs. Overall across the eligible population, 50% were identified as having routine needs.

## Appendix I-EVAL: Time to Initial Evaluation

**Metric #1:** The percentage of new consumers with initial evaluation provided within 10 business days of first contact

**Metric #2:** The mean number of days until initial evaluation for new consumers

### EXAMPLES

#### METRIC #1

The percentage of new consumers with initial evaluation provided within 10 business days of first contact:

**Denominator:** Calculate the denominator as follows, with the measurement period being the first 11 months of the measurement year (MY) and the 6 months preceding the MY contact:

1. 100 consumers contact clinic in first 11 months of the MY
2. 50 of those were not seen at the clinic in the 6 months preceding the MY contact
3. Of those 50, 20 were Medicaid eligible, 15 were both Medicare and Medicaid eligible, and 15 were neither.
4. Calculate as follows for stratification by payer:

<b>Steps in calculation</b>	<b>Medicaid</b>	<b>Medicare &amp; Medicaid</b>	<b>Neither</b>	<b>Total</b>
Number of consumers who contact clinic in first 11 months of the MY	50	25	25	100
Number of those not seen at the clinic in the 6 months preceding the MY contact	20	15	15	50
<b>Denominator stratified by payer status</b>	<b>20</b>	<b>15</b>	<b>15</b>	<b>50</b>

Appendix I-EVAL: Time to Initial Evaluation

**Numerator:** Calculate the numerator for stratification by payer as follows, with the measurement period being the measurement year (MY):

<b>Steps in calculation</b>	<b>Medicaid</b>	<b>Medicare &amp; Medicaid</b>	<b>Neither</b>	<b>Total</b>
Denominator stratified by payer status	20	15	15	50
Seen within 10 business days of first contact	19	10	7	36
<b>Numerator stratified by payer status</b>	<b>19</b>	<b>10</b>	<b>7</b>	<b>36</b>

**Quality Metric, the percentage of new consumers with initial evaluation provided within 10 business days of first contact, by payer status:**

**Medicaid:**  $19/20 = .950 = .95$  or **95%**

**Medicare & Medicaid:**  $10/15 = .667 = .67$  or **67%**

**Neither:**  $7/15 = .467 = .47$  or **47%**

**Total:**  $36/50 = .720 = .72$  or **72%**

Metrics interpretation: For the Medicaid eligible population, 95% received an initial evaluation within 10 days of their initial contact with the BHC; whereas, only 67% of those dually eligible for Medicare and Medicaid and only 47% of consumers without Medicare or Medicaid (referred to as “Neither”) received a similar initial evaluation. Overall, across the eligible population, 72% received an initial evaluation within 10 days of their initial contact with the BHC.

See below for similar calculation stratified by age:

**Denominator:**

<b>Steps in calculation</b>	<b>Aged 12-17</b>	<b>Aged 18 and older</b>	<b>Total</b>
Number of consumers who contact clinic in first 11 months of the MY	25	75	100
Number of those not seen at the clinic in the 6 months preceding the MY contact	10	40	50

Appendix I-EVAL: Time to Initial Evaluation

Steps in calculation	Aged 12-17	Aged 18 and older	Total
Denominator stratified by age	10	40	50

*Numerator:*

Steps in calculation	Aged 12-17	Aged 18 and older	Total
Denominator stratified by age	10	40	50
Seen within 10 business days of first contact	3	33	36
<b>Numerator stratified by age</b>	<b>3</b>	<b>33</b>	<b>36</b>

*Quality Metric, the percentage of new consumers with initial evaluation provided within 10 business days of first contact, by age category:*

**Aged 12-17 years:**  $3/10 = .300 = .30$  or **30%**

**Aged 18 years and older:**  $33/40 = .825 = .83$  or **83%**

**Total:**  $36/50 = .720 = .72$  or **72%**

Metrics interpretation: For those consumers in the eligible population aged 18 years and older, 83% received an initial evaluation within 10 days of their initial contact with the BHC, compared to 30% of consumers aged 12-17 years of age who received an initial evaluation.

**METRIC #2**

The mean number of days until initial evaluation for new consumers:

Assuming 10 consumers (Consumers A through J) seen during the first 11 months of the measurement year and not seen at the clinic in the prior 6 months with counts by payer status as shown below:

*Denominator:* The number of eligible consumers:

Number of consumers	Medicaid	Medicare & Medicaid	Neither	Total
	4	3	3	10

Appendix I-EVAL: Time to Initial Evaluation

**Numerator:** The total number of business days between first contact and initial evaluation (stratified by payer status):

<b>Consumer</b>	<b>Medicaid</b>	<b>Medicare &amp; Medicaid</b>	<b>Neither</b>	<b>Total</b>
A	10			10
B	15			15
C	8			8
D	31*			31*
E		20		20
F		13		13
G		3		3
H			4	4
I			3	3
J			31*	31*
<b>Total Numerator</b>	<b>64</b>	<b>36</b>	<b>38</b>	<b>138</b>

\* First contact at the end of the 11<sup>th</sup> month of the MY and not seen again for initial evaluation.

**Quality Metric, the mean number of days until initial evaluation for new consumers, by payer status:**

**Medicaid:**  $64 / 4 = 16$  days

**Medicare & Medicaid:**  $36 / 3 = 12$  days

**Neither:**  $38 / 3 = 12.7$  days

**Total:**  $138 / 10 = 13.8$  days

Metrics interpretation: For the Medicaid new consumers in the eligible population, an average of 16 days elapsed until initial evaluation; whereas, those consumers who had neither Medicaid or Medicare (referred to as “Neither”) had 12.7 days on average before an initial evaluation.

See below for similar calculation stratified by age:

**Denominator:**

Appendix I-EVAL: Time to Initial Evaluation

Number of consumers	Aged 12-17 years	Aged 18 years and older	Total
	3	7	10

*Numerator:*

Consumer	Aged 12-17 years	Aged 18 years and older	Total
A		10	10
B		15	15
C		8	8
D	31*		31*
E		20	20
F		13	13
G		3	3
H	4		4
I		3	3
J	31*		31*
<b>Total Numerator</b>	<b>66</b>	<b>72</b>	<b>138</b>

\* First contact at the end of the 11<sup>th</sup> month of the MY and not seen again for initial evaluation.

*Quality Metric, the mean number of days until initial evaluation for new consumers, by age category:*

**Aged 12-17 years:**  $66/3 = 33$  days

**Aged 18 years and older:**  $72/7 = 10.29$  or **10.3** days

**Total:**  $138/10 = 13.8$  days

Metrics interpretation: For the new consumers aged 18 years and older in the eligible population, an average of 10.3 days elapsed until initial evaluation; whereas, those consumers aged 12-17 years had 33 days on average before an initial evaluation.



## Appendix TX-EVAL: Time to Comprehensive Person and Family-Centered Diagnostic and Treatment Planning Evaluation

The mean number of days after first contact until comprehensive person-centered and family centered diagnostic and treatment planning evaluation is performed for new consumers

### EXAMPLE

Assuming 10 consumers (Consumers A through J) seen during the first 9 months of the measurement year and not seen at the clinic in the prior 6 months with counts by payer status as shown below:

*Denominator:* The number of eligible consumers:

Number of consumers	Medicaid	Medicare & Medicaid	Neither	Total
	4	3	3	10

*Numerator:*

The total number of days between first contact and comprehensive evaluation (stratified by payer status):

Consumer	Medicaid	Medicare & Medicaid	Neither	Total
A	100			100
B	150			150
C	40			40
D	91*			91*
E		30		30
F		45		45
G		55		55
H			34	34
I			45	45

Appendix TX-EVAL: Time to Comprehensive Person and Family-Centered Diagnostic and Treatment Planning Evaluation

Consumer	Medicaid	Medicare & Medicaid	Neither	Total
J			91*	91*
<b>Total Numerator</b>	<b>381</b>	<b>130</b>	<b>170</b>	<b>681</b>

\* First contact at the end of the 9<sup>th</sup> month of the MY and not seen again for comprehensive evaluation.

*Quality Metric, the mean number of days after first contact until comprehensive person-centered and family centered diagnostic and treatment planning evaluation is performed for new consumers, by payer status:*

**Medicaid:**  $381/4 = 95.3$  days

**Medicare & Medicaid:**  $130/3 = 43.3$  days

**Neither:**  $170/3 = 56.7$  days

**Total:**  $681/10 = 68.1$  days

Metrics interpretation: For the Medicaid consumers in the eligible population, on average, 95.3 days elapsed between first contact until comprehensive person-centered and family centered diagnostic and treatment planning evaluation is performed for these new consumers, in contrast to 68.1 days for the total population.

See below for similar calculation stratified by age:

**Denominator:**

Number of consumers	Aged 12-17 years	Aged 18 years and older	Total
	3	7	10

**Numerator:**

Consumer	Aged 12-17 years	Aged 18 years and older	Total
A		100	100
B	150		150
C		40	40

Appendix TX-EVAL: Time to Comprehensive Person and Family-Centered Diagnostic and Treatment Planning Evaluation

Consumer	Aged 12-17 years	Aged 18 years and older	Total
D		91*	91*
E		30	30
F	45		45
G		55	55
H		34	34
I		45	45
J	91*		91*
<b>Total Numerator</b>	<b>286</b>	<b>395</b>	<b>681</b>

\* First contact at the end of the 11<sup>th</sup> month of the MY and not seen again for comprehensive evaluation.

*Quality Metric, the mean number of days after first contact until comprehensive person-centered and family centered diagnostic and treatment planning evaluation is performed for new consumers, by age category:*

**Aged 12-17 years:**  $286/3 = 95.3$  days

**Aged 18 years and older:**  $395/7 = 56.4$  days

**Total:**  $681/10 = 68.1$  days

Metrics interpretation: For the consumers in the eligible population aged 18 years and older, on average, 56.4 days elapsed between first contact until comprehensive person-centered and family centered diagnostic and treatment planning evaluation is performed for these new consumers; whereas, for those consumers aged 12-17 years, over 95 days elapsed between the 2 events.

## Appendix SUIC: Deaths by Suicide

Percentage of consumers aged 12 years and older who died by suicide during the measurement year

### EXAMPLE

Calculate the metric stratified by age as follows:

Age	Number of consumers	Number of suicides	Percentage
12–17 years	60	2	$2/60 = .03$ or 3%
18–64 years	100	4	$4/100 = .04$ or 4%
65 years and older	50	2	$2/50 = .04$ or 4%
Total	210	8	$8/210 = .04$ or 4%

Metrics interpretation: Consumers ages 12-17 had the lowest rate of deaths by suicide (3% in contrast to 4% for the rest of the population).

Calculate the metric stratified by payer status as follows:

Payer status	Number of consumers	Number of suicides	Percentage
Medicaid only	100	4	$4/100 = .04$ or 4%
Medicare and Medicaid	70	3	$3/70 = .04$ or 4%
Neither	40	1	$1/40 = .03$ or 3%
Total	210	8	$8/210 = .04$ or 4%

Metrics interpretation: Consumers who had neither Medicaid nor dual eligibility for Medicare and Medicaid had the lowest rate of deaths by suicide (3% in contrast to 4% for all other payer groups).

## **Appendix DOC.A: Documentation of Current Medications in the Medical Record**

Percentage of visits for consumers aged 18 years and older for which the eligible professional attests to documenting a list of current medications using all immediate resources available on the date of the encounter. This list must include ALL known prescriptions, over-the-counters, herbals, and vitamin/mineral/dietary (nutritional) supplements AND must contain the medications' name, dosage, frequency and route of administration.

### **EXAMPLE**

*Eligible Population or Denominator:* Calculate the denominator as follows, with the measurement period being the measurement year (MY):

1. Number of consumers aged 18 or older who were seen at the clinic during the MY: 1,000
2. Number of visits during the MY by those 1,000 consumers: 6,000
3. Number of visits where the consumer was in an urgent or emergent medical situation where time was of the essence and to delay treatment would jeopardize the consumer's health status: 500
4. Of the 5,500 nonexcluded visits, 3,000 are by Medicaid beneficiaries, 1,000 are by consumers who are beneficiaries of both Medicare and Medicaid, and 1,500 are by consumers who are neither.

Appendix DOC.A: Documentation of Current Medications in the Medical Record

Calculate as follows:

Steps in calculation	Medicaid	Medicare & Medicaid	Neither	Total
Number of visits by age and encounter-eligible consumers during the MY	3,200	1,200	1,600	6,000
From those, exclude visits where there were medical reasons for not screening (G8430)	200	200	100	500
<b>Denominator</b>	<b>3,200-200 = 3,000</b>	<b>1,200-200 = 1,000</b>	<b>1,600-100 = 1,500</b>	<b>6,000-500 = 5,500</b>

**Numerator:** Calculate the numerator as follows, with the measurement period being the MY:

Steps in calculation	Medicaid	Medicare & Medicaid	Neither	Total
Denominator	3,000	1,000	1,500	5,500
Documentation of current medications in medical record (G8427)	2,500	800	1,000	4,300
No documentation of current medications in medical record (G8428)	500	200	500	1,200
<b>Numerator</b>	<b>2,500</b>	<b>800</b>	<b>1,000</b>	<b>4,300</b>

**Quality Measure, percentage of visits for consumers aged 18 years and older for which the eligible professional attests to documenting a list of current medications on the date of the encounter:**

**Medicaid:**  $2,500/3,000 = .833 = .83$  or **83%**

**Medicare & Medicaid:**  $800/1,000 = .800 = .80$  or **80%**

**Neither:**  $1,000/1,500 = .666 = .67$  or **67%**

Appendix DOC.A: Documentation of Current Medications in the Medical Record

**Total:**  $4,300/5,500 = .782 = .78$  or **78%**

Measure interpretation: For the Medicaid consumers aged 18 years and older in the eligible population, 83% of their visits had documentation that a list of current medications was available on the date of the encounter.

## Appendix DOC.B: Documentation of Current Medications in the Medical Record

Codes that may apply to this measure are provided below.

Category	Codes
Eligible population step 1, encounter codes	90791, 90792, 90832, 90834, 90837, 90839, 90957, 90958, 90959, 90960, 90962, 90965, 90966, 92002, 92004, 92012, 92014, 92507, 92508, 92526, 92541, 92542, 92543, 92544, 92545, 92547, 92548, 92557, 92567, 92568, 92570, 92585, 92588, 92626, 96116, 96150, 96151, 96152, 97001, 97002, 97003, 97004, 97532, 97802, 97803, 97804, 98960, 98961, 98962, 99201, 99202, 99203, 99204, 99205, 99212, 99213, 99214, 99215, 99221, 99222, 99223, 99324, 99325, 99326, 99327, 99328, 99334, 99335, 99336, 99337, 99341, 99342, 99343, 99344, 99345, 99347, 99348, 99349, 99350, 99495, 99496, G0101, G0108, G0270, G0402, G0438, G0439
Current Medications not Documented, Patient not Eligible	G8430
Eligible professional attests to documenting in the medical record they obtained, updated, or reviewed the consumer's current medications	G8427
Current list of medications not documented as obtained, updated, or reviewed by the eligible professional, reason not given	G8428



## Appendix BMI-SF.A: Preventive Care & Screening: Body Mass Index (BMI) Screening & Follow-Up

Percentage of consumers aged 18 years and older with a BMI documented during the current encounter or during the previous six months AND with a BMI of normal parameters, a follow-up plan is documented during the encounter or during the previous six months of the current encounter.

Normal Parameters: Age 65 years and older BMI  $\geq 23$  and  $< 30$  kg/m<sup>2</sup>

Age 18 - 64 years BMI  $\geq 18.5$  and  $< 25$  kg/m<sup>2</sup>

### EXAMPLE

***Eligible Population or Denominator:*** Calculate the denominator as follows, with the measurement period being the measurement year (MY):

1. Consumers aged 18 years or older who were seen at the clinic with one of the denominator-eligible encounter codes during the MY: 200
2. Exclusions:
  - a. BMI Not Documented, Consumer Not Eligible: 15
  - b. BMI Documented Outside of Normal Limits and Follow-Up Plan Not Documented in MY, Consumer Not Eligible: 4
  - c. No quality-data codes reported: 1  
200-20=180
3. Of the 180 non-excluded consumers, 100 are Medicaid beneficiaries, 20 are Medicaid & Medicare eligible, and 60 are neither.

Calculate as follows:

Steps in calculation	Medicaid	Medicaid & Medicare	Neither	Total
Consumers aged 18 years or older seen during MY with denominator-eligible encounter codes	109	28	63	200

Appendix BMI-SF.A: Preventive Care & Screening: Adult Body Mass Index (BMI) Screening & Follow-Up

<b>Steps in calculation</b>	<b>Medicaid</b>	<b>Medicaid &amp; Medicare</b>	<b>Neither</b>	<b>Total</b>
BMI Not Documented, Consumer Not Eligible (G8422)	6	7	2	15
BMI Documented Out of Normal Limits, Follow-Up Plan Not Documented in MY, Consumer Not Eligible (G8938)	2	1	1	4
No quality-data numerator codes reported	1	0	0	1
<b>Denominator</b>	<b>100</b>	<b>20</b>	<b>60</b>	<b>180</b>

***Numerator:*** Calculate as follows, with the measurement period for the numerator being the measurement year and six months prior:

<b>Steps in calculation</b>	<b>Medicaid</b>	<b>Medicaid &amp; Medicare</b>	<b>Neither</b>	<b>Total</b>
Denominator	100	20	60	180
BMI Not Documented, Reason not Given (G8421)	4	1	8	13
BMI Documented Outside of Normal Parameters, Follow-Up Plan not Documented, Reason not Given (G8419)	7	1	10	18
<b>Numerator</b>	<b>89</b>	<b>18</b>	<b>42</b>	<b>149</b>

***Quality Measure, Percentage of consumers aged 18 years and older with a BMI documented during the current encounter or during the previous six months AND with***

*a BMI of normal parameters, and with a follow-up plan documented during the encounter or during the previous six months of the current encounter:*

**Medicaid:**  $89/100 = .890 = .89$  or **89%**

**Medicaid & Medicare:**  $18/20 = .900 = .90$  or **90%**

**Neither:**  $42/60 = .700 = .70$  or **70%**

**Total:**  $149/180 = .827 = .83$  or **83%**

Metric interpretation: 89% of the Medicaid consumers in the eligible population who were 18 years and older with a BMI documented during the current encounter or during the previous six months AND with a BMI of normal parameters, had a follow-up plan that was documented during the encounter or during the previous six months of the current encounter; whereas, only 70% of consumers without Medicaid or Medicare (referred to as “Neither”) had a follow-up plan documented under the same criteria.

**Appendix BMI-SF.B. Codes Relevant to Preventive Care & Screening: Adult  
Body Mass Index (BMI) Screening and Follow-Up**

Codes that may apply to this measure are provided below.

<b>Category</b>	<b>Codes</b>
Eligible population step 2, encounter codes	90791, 90792, 90832, 90834, 90837, 90839, 96150, 96151, 96152, 97001, 97003, 97802, 97803, 98960, 99201, 99202, 99203, 99204, 99205, 99212, 99213, 99214, 99215, D7140, D7210, G0101, G0108, G0270, G0271, G0402, G0438, G0439, G0447
BMI not documented with documentation the consumer is not eligible for BMI calculation	G8422
BMI is documented as being outside of normal limits, follow-up plan is not documented, documentation shows the consumer is not eligible	G8938
BMI is documented within normal parameters and no follow up plan is required	G8420
BMI is documented above normal parameters and a follow-up plan is documented	G8417
BMI is documented below normal parameters and a follow-up plan is documented	G8418
BMI not documented and no reason is given	G8421
BMI documented outside normal parameters, no follow-up plan documented, no reason given	G8419

**Appendix CBP-BH. Controlling High Blood Pressure****Table CBP-A: Prescriptions to Identify Consumers with Diabetes**

Description	Prescription
Alpha-glucosidase inhibitors	Acarbose Miglitol
Amylin analogs	Pramlintide
Antidiabetic combinations	Alogliptin-metformin Alogliptin-pioglitazone Canaglifozin-metformin Empaglifozin-linagliptin Empagliflozin/metformin Glimepiride-pioglitazone Glimepiride-rosiglitazone Glipizide-metformin Glyburide-metformin Linagliptin-metformin Metformin-pioglitazone Metformin-repaglinide Metformin-rosiglitazone Metformin-saxagliptin Metformin-sitagliptin Sitagliptin-simvastatin
Insulin	Insulin aspart Insulin aspart-insulin aspart protamine Insulin detemir Insulin glargine Insulin glulisine Insulin human inhaled Insulin isophane human Insulin isophane-insulin regular Insulin lispro Insulin lispro-insulin lispro protamine Insulin regular human

Appendix CBP-BH: Controlling High Blood Pressure

Please see NCQA Notice of Copyright and Disclaimers in front matter to Volume 1 of this manual.

Description	Prescription
Meglitinides	Nateglinide Repaglinide
Glucagon-like peptide-1 (GLP1) agonists	Dulaglutide Exenatide Liraglutide Albiglutide
Sodium glucose cotransporter 2 (SGLT2) inhibitor	Canagliflozin Dapagliflozin Empagliflozin
Sulfonylureas	Chlorpropamide Glimepiride Glipizide Glyburide Tolazamide Tolbutamide
Thiazolidinediones	Pioglitazone Rosiglitazone
Dipeptidyl peptidase-4 (DDP-4) inhibitors	Alogliptin Linagliptin Saxagliptin Sitagliptin

**Note:** Glucophage/metformin as a solo agent is not included because it is used to treat conditions other than diabetes; consumers with diabetes on these medications are identified through diagnosis codes only.

**Note:** Table CBP-A corresponds to NDC Code Table CDC-A posted to [HEDIS NDC page](#)

## Appendix TSC.A: Preventive Care & Screening: Tobacco Use: Screening & Cessation Intervention

Percentage of consumers aged 18 years and older who were screened for tobacco use one or more times within 24 months AND who received cessation intervention if identified as a tobacco user

### EXAMPLE

***Eligible Population or Denominator:*** Calculate the denominator as follows, with the measurement period (MP) being the measurement year (MY):

1. Consumers seen at the clinic who were aged 18 years or older on the date of first denominator eligible visit during the MY: 200
2. Of the 200 consumers, 100 are Medicaid beneficiaries, 50 are beneficiaries of both Medicare and Medicaid, and 50 are neither.
3. Consumers without quality-data code needed for numerator: 13

Calculate as follows:

Steps in calculation	Medicaid	Medicare & Medicaid	Neither	Total
Age and encounter-eligible consumers seen during MY	100	50	50	200
No quality-data numerator codes reported	5	5	3	13
<b>Denominator</b>	<b>95</b>	<b>45</b>	<b>47</b>	<b>187</b>

**Numerator:** Calculate the numerator as follows, with the MP being the measurement year and the year before:

<b>Steps in calculation</b>	<b>Medicaid</b>	<b>Medicare &amp; Medicaid</b>	<b>Neither</b>	<b>Total</b>
Denominator	95	45	47	187
Remove consumers with a documented medical reason for not screening for tobacco use during the MY or the year prior (4004F with 1P)	15	30	2	47
Exclude consumers not screened for tobacco use during the MP, reason not otherwise specified (4004F with 8P)	10	7	8	25
Exclude consumers who were screened for tobacco use and who were identified as tobacco users, but who did not receive a tobacco cessation intervention during the MP, reason not otherwise specified (4004F with 8P)	16	5	10	37
<b>Numerator</b>	<b>95-41=54</b>	<b>45-42=3</b>	<b>47-20=27</b>	<b>187-109=78</b>

**Quality Measure, percentage of consumers aged 18 years and older who were screened for tobacco use one or more times within 24 months AND who received cessation intervention if identified as a tobacco user :**

**Medicaid:**  $54/95 = .57$  or 57%



**Medicare & Medicaid:**  $3/45 = .07$  or **7%**

**Neither:**  $27/47 = .57$  or **57%**

**Total:**  $78/187 = .530 = .42$  or **42%**

Measure interpretation: For the Medicaid consumers in the eligible population, 57% aged 18 years and older were screened for tobacco use one or more times within 24 months AND received cessation intervention if identified as a tobacco user.

## Appendix TSC.B: Preventive Care & Screening: Tobacco Use: Screening & Cessation Intervention

Codes that may apply to this measure are provided below.

Category	Codes
Eligible population step 3, encounter codes	90791, 90792, 90832, 90834, 90837, 90845, 92002, 92004, 92012, 92014, 92521, 92522, 92523, 92524, 92540, 92557, 92625, 96150, 96151, 96152, 97003, 97004, 99201, 99202, 99203, 99204, 99205, 99212, 99213, 99214, 99215, 99406, 99407, G0438, G0439
Documentation of medical reason(s) for not screening for tobacco use (e.g., limited life expectancy, other medical reasons)	CPT II 4004F with 1P
Consumer screened for tobacco use AND received tobacco cessation intervention (counseling, pharmacotherapy, or both), if identified as a tobacco user	CPT II 4004F
Consumer screened for tobacco use and identified as a non-user of tobacco	CPT II 1036F
Tobacco screening OR tobacco cessation intervention not performed, reason not otherwise specified	CPT II 4004F with 8P

## **Appendix ASC.A: Preventive Care & Screening: Unhealthy Alcohol Use: Screening & Brief Counseling**

Percentage of consumers aged 18 years and older who were screened at least once within the last 24 months for unhealthy alcohol use using a systematic screening method AND who received brief counseling if identified as an unhealthy alcohol user

### **EXAMPLE**

***Eligible Population or Denominator:*** Calculate the denominator as follows, with the measurement period being the measurement year (MY):

1. Consumers seen at the clinic who were aged 18 or older on the date of first denominator-eligible visit during the MY: 200
2. Of the 200 consumers, 100 are Medicaid beneficiaries, 50 are beneficiaries of both Medicare and Medicaid, and 50 are neither.
3. Consumers seen at least twice for any denominator-eligible visit or at least once for preventive care visit during the MY: 140
4. Consumers without quality-data code needed for numerator: 13

Calculate as follows:

<b>Steps in calculation</b>	<b>Medicaid</b>	<b>Medicare &amp; Medicaid</b>	<b>Neither</b>	<b>Total</b>
Age-eligible consumers seen during MY	100	50	50	200
From those, consumers who were seen at least twice for any denominator-eligible visit or at least once for preventive care visit during the MY	70	40	30	140
No quality-data numerator codes reported	5	5	3	13
<b>Denominator</b>	<b>70-5=65</b>	<b>40-5=35</b>	<b>30-3=27</b>	<b>140-13=127</b>

**Numerator:** Calculate the numerator as follows, with the measurement period (MP) being the measurement year and the year before:

<b>Steps in calculation</b>	<b>Medicaid</b>	<b>Medicare &amp; Medicaid</b>	<b>Neither</b>	<b>Total</b>
Denominator	65	35	27	127
From those, remove consumers with a documented medical reason(s) for not screening for unhealthy alcohol use in the MY or the year prior (G9623)	5	5	3	13

<b>Steps in calculation</b>	<b>Medicaid</b>	<b>Medicare &amp; Medicaid</b>	<b>Neither</b>	<b>Total</b>
From those, exclude consumers not screened during the MP using a systematic screening method (G9624)	10	10	10	30
From those, exclude consumers identified as unhealthy alcohol users when screened for unhealthy alcohol use at least once during MP, who did not receive brief counseling during MP (G9624)	25	10	10	45
<b>Numerator</b>	<b>65-40=25</b>	<b>35-25=10</b>	<b>27-23=4</b>	<b>127-88=39</b>

*Quality Measure, percentage of consumers aged 18 years and older who were screened at least once within the last 24 months for unhealthy alcohol use using a systematic screening method AND who received brief counseling if identified as an unhealthy alcohol user:*

**Medicaid:**  $25/65 = .38$  or **38%**

**Medicare & Medicaid:**  $10/35 = .29$  or **29%**

**Neither:**  $4/27 = .15$  or **15%**

**Total:**  $39/127 = .31$  or **31%**

Measure interpretation: Of the Medicaid consumers within the eligible population aged 18 years and older, 38% were screened at least once within the last 24 months for unhealthy alcohol use using a systematic screening method AND received brief counseling if identified as an unhealthy alcohol user; whereas, for those consumers without Medicare or Medicaid coverage, referred to as “Neither,” only 15% received such screening and counseling.

## Appendix ASC.B: Preventive Care & Screening: Unhealthy Alcohol Use: Screening & Brief Counseling

Codes that may apply to this measure are provided below.

Category	Codes
Eligible population step 3, non-preventive care encounter codes	90791, 90792, 90832, 90834, 90837, 90845, 96150, 96151, 96152, 97003, 97004, 97802, 97803, 97804, 99201, 99202, 99203, 99204, 99205, 99212, 99213, 99214, 99215, G0270, G0271
Eligible population step 3, preventive care encounter codes	G0438, G0439
Documentation of medical reason(s) for not screening for unhealthy alcohol use (e.g., limited life expectancy, other medical reasons)	G9623
Consumer identified as an unhealthy alcohol user when screened for unhealthy alcohol use using a systematic screening method and received brief counseling	G9621
Consumer not identified as an unhealthy alcohol user when screened for unhealthy alcohol use using a systematic screening method	G9622
Consumer not screened for unhealthy alcohol screening using a systematic screening method OR consumer did not receive brief counseling, reason not given	G9624

## **Appendix SRA-BH-C: eCQM Flow for Reporting the Suicide Risk Assessment (SRA-BH-C) Measure**

**Refer to the specific section of the SRA-BH-C specifications to identify the Quality Data Model (QDM) data elements and associated value sets for use in reporting this measure.**

- 1. Start Initial Consumer Population**
- 2. Check Consumer Characteristic Birthdate:**
  - a. If QDM data element, BIRTH DATE, is greater than or equal to 6 years of age AND less than 17 years of age before the start of the measurement period equals No, do not include in Initial Consumer Population. Stop Processing.
  - b. If QDM data element, BIRTH DATE, is greater than or equal to 6 years of age AND less than 17 years of age before the start of the measurement period, equals Yes, continue processing and proceed to check Encounter Performed.
- 3. Check Encounter Performed:** Total number of encounters must be greater than or equal to 2:
  - a. If QDM data element, OFFICE VISIT, during the measurement period equals Yes, include in the Initial Consumer Population and proceed to check for another Encounter Performed until total number of encounters are greater than or equal to 2.
  - b. If QDM data element, OFFICE VISIT, during the measurement period equals No, proceed to check next Encounter Performed.
  - c. If QDM data element, OUTPATIENT CONSULTATION, during the measurement period equals Yes, include in the Initial Consumer Population and proceed to check for another Encounter Performed until total number of encounters are greater than or equal to 2.
  - d. If QDM data element, OUTPATIENT CONSULTATION, during the measurement period equals No, proceed to check next Encounter Performed.
  - e. If QDM data element, CONSUMER PROVIDER INTERACTION, during the measurement period equals Yes, include in the Initial Consumer Population and proceed to check for another Encounter Performed until total number of encounters are greater than or equal to 2.
  - f. If QDM data element, CONSUMER PROVIDER INTERACTION, during the measurement period equals No, proceed to check next Encounter Performed.
  - g. If QDM data element, PSYCH VISIT – DIAGNOSTIC EVALUATION, during the measurement period equals Yes, include in the Initial Consumer Population and proceed

to check for another Encounter Performed until total number of encounters are greater than or equal to 2.

- h. If QDM data element, PSYCH VISIT – DIAGNOSTIC EVALUATION, during the measurement period equals No, proceed to check next Encounter Performed.
  - i. If QDM data element, PSYCH VISIT – FAMILY PSYCHOTHERAPY, during the measurement period equals Yes, include in the Initial Consumer Population and proceed to check for another Encounter Performed until total number of encounters are greater than or equal to 2.
  - j. If QDM data element, PSYCH VISIT – FAMILY PSYCHOTHERAPY, during the measurement period equals No, proceed to check next Encounter Performed.
  - k. If QDM data element, PSYCHOANALYSIS, during the measurement period equals Yes, include in the Initial Consumer Population and proceed to check for another Encounter Performed until total number of encounters are greater than or equal to 2.
  - l. If QDM data element, PSYCHOANALYSIS, during the measurement period equals No, proceed to check next Encounter Performed.
  - m. If QDM data element, GROUP PSYCHOTHERAPY, during the measurement period equals Yes, include in the Initial Consumer Population and proceed to check for another Encounter Performed until total number of encounters are greater than or equal to 2.
  - n. If QDM data element, GROUP PSYCHOTHERAPY, during the measurement period equals No, do not include in the Initial Consumer Population and proceed to check next Encounter Performed.
  - o. If QDM data element, PSYCH VISIT - PSYCHOTHERAPY, during the measurement period equals Yes, include in the Initial Consumer Population and proceed to check Diagnosis Active if total number of encounters are greater than or equal to 2.
  - p. If QDM data element, PSYCH VISIT - PSYCHOTHERAPY, during the measurement period equals No, do not include in the Initial Consumer Population. Stop Processing.
4. **Check Diagnosis Active:**
- a. If Occurrence A of QDM data element, MAJOR DEPRESSIVE DISORDER - ACTIVE, starts before or during but does not end before the start of Occurrence A of Encounter Performed QDM data element, PSYCH VISIT – DIAGNOSTIC EVALUATION, during measurement period equals Yes include in Initial Consumer Population and continue on to the Denominator.
  - b. If Occurrence A of QDM data element, MAJOR DEPRESSIVE DISORDER - ACTIVE, starts before or during but does not end before the start of Occurrence A of Encounter Performed QDM data element, PSYCH VISIT – DIAGNOSTIC EVALUATION, during measurement period equals No proceed to check next Diagnosis Active.



- c. If Occurrence A of QDM data element, MAJOR DEPRESSIVE DISORDER -ACTIVE, starts before or during but does not end before the start of Occurrence A of Encounter Performed QDM data element, PSYCH VISIT – FAMILY PSYCHOTHERAPY, during measurement period equals Yes include in Initial Consumer Population and continue on to the Denominator.
- d. If Occurrence A of QDM data element, MAJOR DEPRESSIVE DISORDER - ACTIVE, starts before or during but does not end before the start of Occurrence A of Encounter Performed QDM data element, PSYCH VISIT – FAMILY PSYCHOTHERAPY, during measurement period equals No, proceed to check next Diagnosis Active.
- e. If Occurrence A of QDM data element, MAJOR DEPRESSIVE DISORDER - ACTIVE, starts before or during but does not end before the start of Occurrence A of Encounter Performed QDM data element, FACE-TO-FACE INTERACTION, during measurement period equals Yes, include in Initial Consumer Population and continue on to the Denominator.
- f. If Occurrence A of QDM data element, MAJOR DEPRESSIVE DISORDER - ACTIVE, starts before or during but does not end before the start of Occurrence A of Encounter Performed QDM data element, FACE-TO-FACE INTERACTION, during measurement period equals No, proceed to check next Diagnosis Active.
- g. If Occurrence A of QDM data element, MAJOR DEPRESSIVE DISORDER - ACTIVE, starts before or during but does not end before the start of Occurrence A of Encounter Performed QDM data element, GROUP PSYCHOTHERAPY, during measurement period equals Yes, include in Initial Consumer Population and continue on to the Denominator.
- h. If Occurrence A of QDM data element, MAJOR DEPRESSIVE DISORDER - ACTIVE, starts before or during but does not end before the start of Occurrence A of Encounter Performed QDM data element, GROUP PSYCHOTHERAPY, during measurement period equals No, proceed to check next Diagnosis Active.
- i. If Occurrence A of QDM data element, MAJOR DEPRESSIVE - ACTIVE, starts before or during but does not end before the start of Occurrence A of Encounter Performed QDM data element, OUTPATIENT CONSULTATION, during measurement period equals Yes, include in Initial Consumer Population and continue on to the Denominator.
- j. If Occurrence A of QDM data element, MAJOR DEPRESSIVE DISORDER - ACTIVE, starts before or during but does not end before the start of Occurrence A of Encounter Performed QDM data element, OUTPATIENT CONSULTATION, during measurement period equals No, proceed to check next Diagnosis Active.
- k. If Occurrence A of QDM data element, MAJOR DEPRESSIVE DISORDER - ACTIVE, starts before or during but does not end before the start of Occurrence A of Encounter

Performed QDM data element, OFFICE VISIT, during measurement period equals Yes, include in Initial Consumer Population and continue on to the Denominator.

- l. If Occurrence A of QDM data element, MAJOR DEPRESSIVE DISORDER - ACTIVE, starts before or during but does not end before the start of Occurrence A of Encounter Performed QDM data element, OFFICE VISIT, during measurement period equals No, proceed to check next Diagnosis Active.
- m. If Occurrence A of QDM data element, MAJOR DEPRESSIVE DISORDER - ACTIVE, starts before or during but does not end before the start of Occurrence A of Encounter Performed QDM data element, PSYCHOANALYSIS, during measurement period equals Yes, include in Initial Consumer Population and continue on to the Denominator.
- n. If Occurrence A of QDM data element, MAJOR DEPRESSIVE DISORDER - ACTIVE starts before or during but does not end before the start of Occurrence A of Encounter Performed QDM data element, PSYCHOANALYSIS, during measurement period equals No, proceed to check next Diagnosis active.
- o. If Occurrence A of QDM data element, MAJOR DEPRESSIVE DISORDER - ACTIVE, starts before or during but does not end before the start of Occurrence A of Encounter Performed QDM data element, PSYCH VISIT – PSYCHOTHERAPY, during measurement period equals Yes, include in Initial Consumer Population and continue on to the Denominator.
- p. If Occurrence A of QDM data element, MAJOR DEPRESSIVE DISORDER - ACTIVE starts before or during but does not end before the start of Occurrence A of Encounter Performed QDM data element, PSYCH VISIT – PSYCHOTHERAPY, during measurement period equals No, do not include in the Initial Consumer Population. Stop Processing.

**5. Start Denominator**

- a. Denominator equals the Initial Consumer Population. Denominator is represented by the letter B in the sample calculation listed at the end of this document. Letter B equals 10 consumers in the sample calculation.

**6. Start Numerator**

**7. Check Intervention Performed:**

- a. If Occurrence A of QDM data element SUICIDE RISK ASSESSMENT during Occurrence A of Encounter Performed QDM data element, PSYCH VISIT – DIAGNOSTIC EVALUATION equals Yes, include in the Numerator count. The Numerator is represented by the letter A in the sample calculation listed at the end of this document. Letter A equals 5 consumers in the sample calculation.
- b. If Occurrence A of QDM data element SUICIDE RISK ASSESSMENT during Occurrence A of Encounter Performed QDM data element, PSYCH VISIT –

DIAGNOSTIC EVALUATION equals No, proceed to check next Intervention Performed.

- c. If Occurrence A of QDM data element SUICIDE RISK ASSESSMENT during Occurrence A of Encounter Performed QDM data element, PSYCH VISIT – FAMILY PSYCHOTHERAPY equals Yes, include in the Numerator count. The Numerator is represented by the letter A in the sample calculation listed at the end of this document. Letter A equals 5 consumers in the sample calculation.
- d. If Occurrence A of QDM data element SUICIDE RISK ASSESSMENT during Occurrence A of Encounter Performed QDM data element, PSYCH VISIT – FAMILY PSYCHOTHERAPY equals No, proceed to check next Intervention Performed.
- e. If Occurrence A of QDM data element SUICIDE RISK ASSESSMENT during Occurrence A of Encounter Performed QDM data element, FACE-TO-FACE INTERACTION equals Yes, include in the Numerator count. The Numerator is represented by the letter A in the sample calculation listed at the end of this document. Letter A equals 5 consumers in the sample calculation.
- f. If Occurrence A of QDM data element SUICIDE RISK ASSESSMENT during Occurrence A of Encounter Performed QDM data element, FACE-TO-FACE INTERACTION equals No, proceed to check next Intervention Performed.
- g. If Occurrence A of QDM data element SUICIDE RISK ASSESSMENT during Occurrence A of Encounter Performed QDM data element, GROUP PSYCHOTHERAPY equals Yes, include in the Numerator count. The Numerator is represented by the letter A in the sample calculation listed at the end of this document. Letter A equals 5 consumers in the sample calculation.
- h. If Occurrence A of QDM data element SUICIDE RISK ASSESSMENT during Occurrence A of Encounter Performed QDM data element, GROUP PSYCHOTHERAPY equals No, proceed to check next Intervention Performed.
- i. If Occurrence A of QDM data element SUICIDE RISK ASSESSMENT during Occurrence A of Encounter Performed QDM data element, OUTPATIENT CONSULTATION equals Yes, include in the Numerator count. The Numerator is represented by the letter A in the sample calculation listed at the end of this document. Letter A equals 5 consumers in the sample calculation.
- j. If Occurrence A of QDM data element SUICIDE RISK ASSESSMENT during Occurrence A of Encounter Performed QDM data element, OUTPATIENT CONSULTATION equals No, proceed to check next Intervention Performed.
- k. If Occurrence A of QDM data element SUICIDE RISK ASSESSMENT during Occurrence A of Encounter Performed QDM data element, OFFICE VISIT equals Yes, include in the Numerator count. The Numerator is represented by the letter A in the sample calculation listed at the end of this document. Letter A equals 5 consumers in the sample calculation.

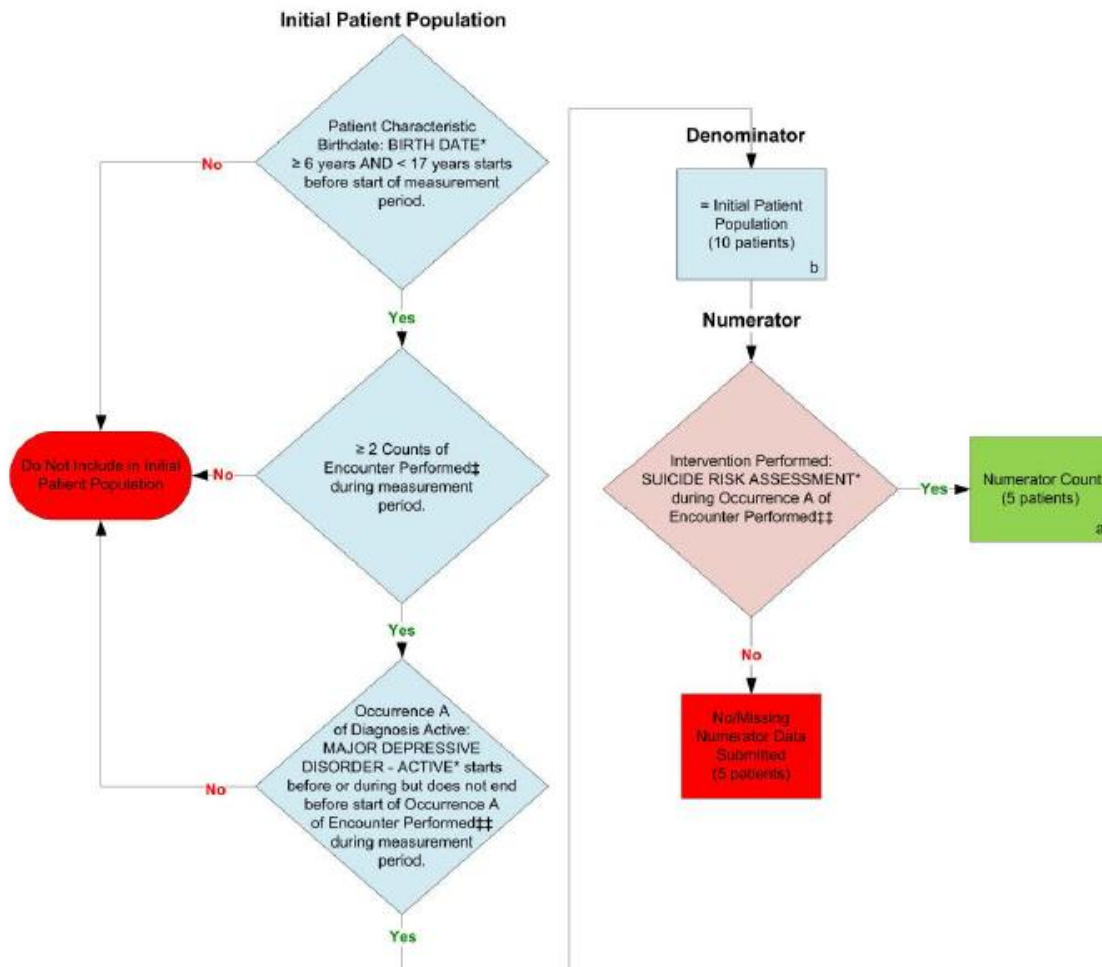
- l. If Occurrence A of QDM data element SUICIDE RISK ASSESSMENT during Occurrence A of Encounter Performed QDM data element, OFFICE VISIT equals No, proceed to check next Intervention Performed.
- m. If Occurrence A of QDM data element SUICIDE RISK ASSESSMENT during Occurrence A of Encounter Performed QDM data element, PSYCHOANALYSIS equals Yes, include in the Numerator count. The Numerator is represented by the letter A in the sample calculation listed at the end of this document. Letter A equals 5 consumers in the sample calculation.
- n. If Occurrence A of QDM data element SUICIDE RISK ASSESSMENT during Occurrence A of Encounter Performed QDM data element, PSYCHOANALYSIS equals No, proceed to check next Intervention Performed.
- o. If Occurrence A of QDM data element SUICIDE RISK ASSESSMENT during Occurrence A of Encounter Performed QDM data element, PSYCH VISIT - PSYCHOTHERAPY equals Yes, include in the Numerator count. The Numerator is represented by the letter A in the sample calculation listed at the end of this document. Letter A equals 5 consumers in the sample calculation.
- p. If Occurrence A of QDM data element SUICIDE RISK ASSESSMENT during Occurrence A of Encounter Performed QDM data element, PSYCH VISIT - PSYCHOTHERAPY equals No, include in the No/Missing Numerator Data Submitted count and stop processing.

### **Sample Calculation**

Performance Rate = Numerator (a=5 consumers) ÷ Denominator (b=10 consumers) – Denominator Exclusions (N/A) – Denominator Exceptions (N/A) = 50.00%

Appendix SRA-BH-C: eCQM Flow for Reporting the Suicide Risk Assessment (SRA-BH-C) Measure

2014 eCQM Flow  
 Measure Identifier: CMS177v3  
 NQF 1365: Child and Adolescent Major Depressive Disorder (MDD): Suicide Risk Assessment



\*Please refer to the specific section of the eCQM to identify the QDM data elements and associated value sets for use in reporting this eCQM.  
 ‡ Appropriate encounters include; Office Visit, Outpatient Consultation, Patient Provider Interaction, Psych Visit – Diagnostic Evaluation, Psych Visit – Family Psychotherapy, Psychoanalysis, Group Psychotherapy, and Psych Visit – Psychotherapy.  
 ‡‡ Appropriate encounters include; Psych Visit – Diagnostic Evaluation, Psych Visit – Family Psychotherapy, Face-to-Face Interaction, Group Psychotherapy, Outpatient Consultation, Office Visit, Psychoanalysis, and Psych Visit – Psychotherapy.

**SAMPLE CALCULATION:**

**Performance Rate =**  

$$\frac{\text{Numerator (a=5 patients)}}{\text{Denominator (b=10 patients) - Denominator Exclusions (N/A) - Denominator Exceptions (N/A)}} = 50.00\%$$

## **Appendix SRA-A.A: eCQM Flow for Reporting the Suicide Risk Assessment (SRA-A) Measure**

**Refer to the specific section of the SRA-A specifications to identify the Quality Data Model (QDM) data elements and associated value sets for use in reporting this measure.**

### **1. Start Initial Consumer Population**

#### **2. Check Consumer Characteristic Birthdate:**

a. If the QDM data element, BIRTH DATE, is greater than or equal to 17 years of age starts before the start of the measurement period equals No, do not include in Initial Consumer Population. Stop Processing.

b. If the QDM data element, BIRTH DATE, is greater than or equal to 17 years of age starts before the start of the measurement period, equals Yes continue processing and proceed to check Diagnosis Active.

#### **3. Check Diagnosis Active:**

a. If the QDM data element, MAJOR DEPRESSIVE DISORDER ACTIVE, starts during Occurrence A of Encounter Performed QDM data element PSYCH VISIT – DIAGNOSTIC EVALUATION, during the measurement period equals Yes, include in the Initial Consumer Population and proceed to Denominator.

b. If the QDM data element, MAJOR DEPRESSIVE DISORDER ACTIVE, starts during Occurrence A of Encounter Performed QDM data element PSYCH VISIT – DIAGNOSTIC EVALUATION, during the measurement period equals No, proceed to check next Diagnosis Active.

c. If the QDM data element, MAJOR DEPRESSIVE DISORDER ACTIVE, starts during Occurrence A of Encounter Performed QDM data element, PSYCH VISIT - PSYCHOTHERAPY, during the measurement period equals Yes, include in the Initial Consumer Population and proceed to Denominator.

d. If the QDM data element, MAJOR DEPRESSIVE DISORDER ACTIVE, starts during Occurrence A of Encounter Performed QDM data element PSYCH VISIT - PSYCHOTHERAPY, during the measurement period equals No, proceed to check next Diagnosis Active.

e. If the QDM data element, MAJOR DEPRESSIVE DISORDER ACTIVE, starts during Occurrence A of Encounter Performed QDM data element, EMERGENCY DEPARTMENT VISIT, during the measurement period equals Yes, include in the Initial Consumer Population and proceed to Denominator.

- f. If the QDM data element, MAJOR DEPRESSIVE DISORDER ACTIVE, starts during Occurrence A of Encounter Performed QDM data element EMERGENCY DEPARTMENT VISIT, during the measurement period equals No, proceed to check next Diagnosis Active.
- g. If the QDM data element, MAJOR DEPRESSIVE DISORDER ACTIVE, starts during Occurrence A of Encounter Performed QDM data element, OFFICE VISIT, during the measurement period equals Yes, include in the Initial Consumer Population and proceed to Denominator.
- h. If the QDM data element, MAJOR DEPRESSIVE DISORDER ACTIVE, starts during Occurrence A of Encounter Performed QDM data element OFFICE VISIT, during the measurement period equals No, proceed to check next Diagnosis Active.
- i. If the QDM data element, MAJOR DEPRESSIVE DISORDER ACTIVE, starts during Occurrence A of Encounter Performed QDM data element, OUTPATIENT CONSULTATION, during the measurement period equals Yes, include in the Initial Consumer Population and proceed to Denominator.
- j. If the QDM data element, MAJOR DEPRESSIVE DISORDER ACTIVE, starts during Occurrence A of Encounter Performed QDM data element OUTPATIENT CONSULTATION, during the measurement period equals No, proceed to check next Diagnosis Active.
- k. If the QDM data element, MAJOR DEPRESSIVE DISORDER ACTIVE, starts during Occurrence A of Encounter Performed QDM data element, PSYCHOANALYSIS, during the measurement period equals Yes, include in the Initial Consumer Population and proceed to Denominator.
- l. If the QDM data element, MAJOR DEPRESSIVE DISORDER ACTIVE, starts during Occurrence A of Encounter Performed QDM data element PSYCHOANALYSIS, during the measurement period equals No, proceed to check next Diagnosis Active.
- m. If the QDM data element, MAJOR DEPRESSIVE DISORDER ACTIVE, starts during Occurrence A of Encounter Performed QDM data element, FACE-TO-FACE INTERACTION, during the measurement period equals Yes, include in the Initial Consumer Population and proceed to Denominator.
- n. If the QDM data element, MAJOR DEPRESSIVE DISORDER ACTIVE, starts during Occurrence A of Encounter Performed QDM data element FACE-TO-FACE INTERACTION, during the measurement period equals No, do not include in Initial Consumer Population. Stop Processing.

#### **4. Start Denominator**

a. Denominator equals the Initial Consumer Population. Denominator is represented by the letter B in the sample calculation listed at the end of this document. Letter B equals 10 consumers in the sample calculation.

**5. Start Numerator**

**6. Check Intervention Performed:**

a. If QDM data element SUICIDE RISK ASSESSMENT during Occurrence A of Encounter Performed QDM data element, PSYCH VISIT – DIAGNOSTIC EVALUATION equals Yes, include in the Numerator count. The Numerator is represented by the letter A in the sample calculation listed at the end of this document. Letter A equals 7 consumers in the sample calculation.

b. If QDM data element SUICIDE RISK ASSESSMENT during Occurrence A of Encounter Performed QDM data element, PSYCH VISIT – DIAGNOSTIC EVALUATION equals No, proceed to check next Intervention Performed.

c. If QDM data element SUICIDE RISK ASSESSMENT during Occurrence A of Encounter Performed QDM data element, PSYCH VISIT – PSYCHOTHERAPY equals Yes, include in the Numerator count. The Numerator is represented by the letter A in the sample calculation listed at the end of this document. Letter A equals 7 consumers in the sample calculation.

d. If QDM data element SUICIDE RISK ASSESSMENT during Occurrence A of Encounter Performed QDM data element, PSYCH VISIT – PSYCHOTHERAPY equals No, proceed to check next Intervention Performed.

e. If QDM data element SUICIDE RISK ASSESSMENT during Occurrence A of Encounter Performed QDM data element, EMERGENCY DEPARTMENT VISIT equals Yes, include in the Numerator count. The Numerator is represented by the letter A in the sample calculation listed at the end of this document. Letter A equals 7 consumers in the sample calculation.

f. If QDM data element SUICIDE RISK ASSESSMENT during Occurrence A of Encounter Performed QDM data element, EMERGENCY DEPARTMENT VISIT equals No, proceed to check next Intervention Performed.

g. If QDM data element SUICIDE RISK ASSESSMENT during Occurrence A of Encounter Performed QDM data element, OFFICE VISIT equals Yes, include in the Numerator count. The Numerator is represented by the letter A in the sample calculation listed at the end of this document. Letter A equals 7 consumers in the sample calculation.

h. If QDM data element SUICIDE RISK ASSESSMENT during Occurrence A of Encounter Performed QDM data element, OFFICE VISIT equals No, proceed to check next Intervention Performed.



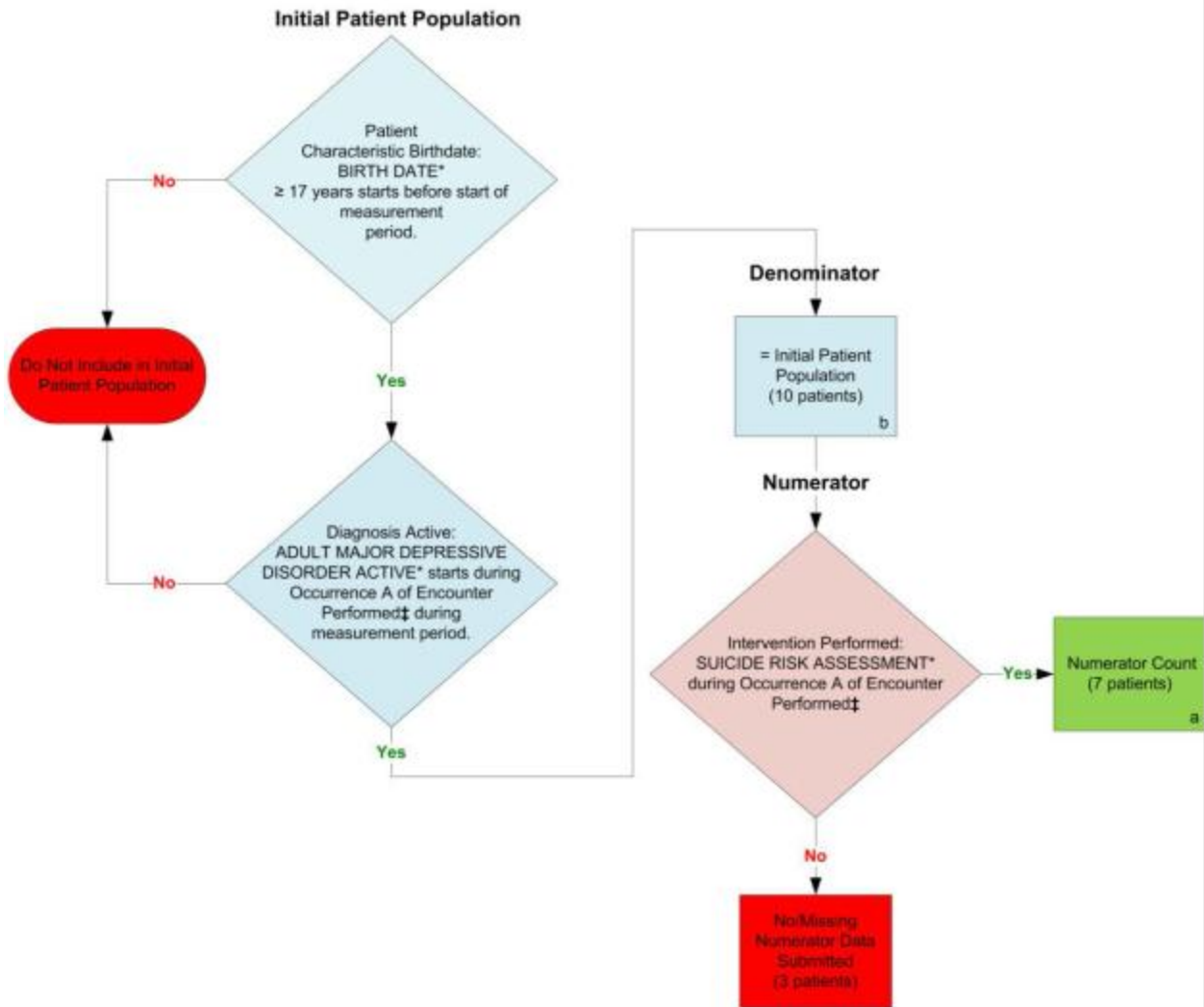
- i. If QDM data element SUICIDE RISK ASSESSMENT during Occurrence A of Encounter Performed QDM data element, OUTPATIENT CONSULTATION, equals Yes, include in the Numerator count. The Numerator is represented by the letter A in the sample calculation listed at the end of this document. Letter A equals 7 consumers in the sample calculation.
- j. If QDM data element SUICIDE RISK ASSESSMENT during Occurrence A of Encounter Performed QDM data element, OUTPATIENT CONSULTATION equals No, proceed to check next Intervention Performed.
- k. If QDM data element SUICIDE RISK ASSESSMENT during Occurrence A of Encounter Performed QDM data element, PSYCHOANALYSIS, equals Yes, include in the Numerator count. The Numerator is represented by the letter A in the sample calculation listed at the end of this document. Letter A equals 7 consumers in the sample calculation.
- l. If QDM data element SUICIDE RISK ASSESSMENT during Occurrence A of Encounter Performed QDM data element, PSYCHOANALYSIS equals No, proceed to check next Intervention Performed.
- m. If QDM data element SUICIDE RISK ASSESSMENT during Occurrence A of Encounter Performed QDM data element, FACE-TO-FACE INTERACTION, equals Yes, include in the Numerator count. The Numerator is represented by the letter A in the sample calculation listed at the end of this document. Letter A equals 7 consumers in the sample calculation.
- n. If QDM data element SUICIDE RISK ASSESSMENT during Occurrence A of Encounter Performed QDM data element, FACE-TO-FACE INTERACTION equals No, include in No/Missing Numerator Data Submitted. Stop Processing.

### **Sample Calculation**

Performance Rate = Numerator (a=7 consumers) ÷ Denominator (b=10 consumers) – Denominator Exclusions (N/A) – Denominator Exceptions (N/A) = 70.00%

Appendix SRA-A.A: eCQM Flow for Reporting the Suicide Risk Assessment (SRA-A) Measure

2014 eCQM Flow  
 Measure Identifier: CMS161v3  
 NQF 0104: Adult Major Depressive Disorder (MDD): Suicide Risk Assessment



\*Please refer to the specific section of the eCQM to identify the QDM data elements and associated value sets for use in reporting this eCQM.  
 ‡ The appropriate encounters include: Psych Visit - Diagnostic Evaluation, Psych Visit - Psychotherapy, Emergency Department Visit, Office Visit, Outpatient Consultation, Psychoanalysis, and Face-to-Face Interaction. .

**SAMPLE CALCULATION:**

Performance Rate = 
$$\frac{\text{Numerator (a = 7 patients)}}{\text{Denominator (b = 10 patients) - Denominator Exclusions (N/A) - Denominator Exceptions (N/A)}} = 70.00\%$$

## Appendix SRA-A.B: Major Depressive Disorder (MDD): Suicide Risk Assessment

Codes that may apply to this measure are provided below.

Category	Codes
Eligible population step 2, diagnosis and encounter codes	<p>International Classification of Diseases, Tenth Revision, Clinical Modification (ICD-10-CM) codes for MDD: F32.0, F32.1, F32.2, F32.3, F32.9, F33.0, F33.1, F33.2, F33.3, and F33.9</p> <p>Current Procedural Terminology [CPT<sup>®</sup>] codes for the encounter: 90791, 90792, 90832, 90834, 90837, 90845, 99201, 99202, 99203, 99204, 99205, 99212, 99213, 99214, 99215, 99241, 99242, 99243, 99244, and 99245</p>

## **Appendix SRA-A.C: Major Depressive Disorder (MDD): Suicide Risk Assessment**

Percentage of consumers aged 18 years and older with a diagnosis of Major Depressive Disorder (MDD) with a suicide risk assessment completed during the visit in which a new diagnosis or recurrent episode was identified

### **EXAMPLE**

***Eligible Population or Denominator:*** Calculate the denominator as follows, with the measurement period (MP) being the measurement year (MY):

1. Consumers seen at the clinic during the MY with a denominator-eligible encounter and new diagnosis or recurrent episode of MDD: 200
2. Of the 200 consumers, 100 are Medicaid beneficiaries, 50 are beneficiaries of both Medicare and Medicaid, and 50 are neither.
3. Of the 200 consumers, the number that were 18 or older at the time of the diagnosis or episode: 160
4. Among those 18 or older, the total number of such new diagnoses or recurrent episodes identified during the MY: 150

Calculate as follows:

<b>Steps in calculation</b>	<b>Medicaid</b>	<b>Medicaid &amp; Medicare</b>	<b>Neither</b>	<b>Total</b>
The number of consumers with a new diagnosis or recurrent episode of MDD during the MY	100	50	50	200
Out of those, the number aged 18 and older at the time of the new diagnosis or recurrent episode	80	35	45	160

<b>Steps in calculation</b>	<b>Medicaid</b>	<b>Medicaid &amp; Medicare</b>	<b>Neither</b>	<b>Total</b>
Among those, the number of new diagnoses or recurrent episodes identified during the MY	85	30	35	150
<b>Denominator</b>	<b>85</b>	<b>30</b>	<b>35</b>	<b>150</b>

**Numerator:** Calculate the numerator as follows, with the MP being the MY:

<b>Steps in calculation</b>	<b>Medicaid</b>	<b>Medicare &amp; Medicaid</b>	<b>Neither</b>	<b>Total</b>
Denominator	85	30	35	150
From the denominator, the number of visits in which the diagnosis or recurrence was identified, where a suicide risk assessment was conducted during the visit	80	25	20	125
<b>Numerator</b>	<b>80</b>	<b>25</b>	<b>20</b>	<b>125</b>

**Quality Measure, percentage of consumers aged 18 years and older with a diagnosis of Major Depressive Disorder (MDD) and with a suicide risk assessment completed during the visit in which a new diagnosis or recurrent episode was identified:**

**Medicaid:**  $80/85 = .941 = .94$  or **94%**

**Medicare & Medicaid:**  $25/30 = .830 = .83$  or **83%**

**Neither:**  $20/35 = .570 = .57$  or **57%**

**Total:**  $125/150 = .830 = .83$  or **83**

Measure interpretation: For the Medicaid consumers aged 18 years and older with a diagnosis of Major Depressive Disorder (MDD), 94% had a suicide risk assessment completed during the visit in which a new diagnosis or recurrent episode was identified. In contrast, for those consumers without Medicare or Medicaid (defined as “Neither”), only 57% had a suicide risk assessment completed during the same visit.

## Appendix CDF-BH.A: Screening for Clinical Depression and Follow-Up Plan

Percentage of consumers aged 12 years and older screened for clinical depression on the date of the encounter using an age-appropriate standardized depression screening tool, and if positive, a follow-up plan is documented on the date of the positive screen

### EXAMPLE

**Eligible Population or Denominator:** Calculate the denominator as follows, with the measurement period (MP) being the measurement year (MY):

1. Consumers seen at the clinic who were aged 12 years or older on the date of first denominator eligible visit during the MY: 400
2. Of the 400 consumers, 250 are Medicaid beneficiaries, 100 are beneficiaries of both Medicare and Medicaid, and 50 are neither.
3. Consumers excluded due to active diagnosis of Depression or Bipolar Disorder: 20; due to refusal to participate: 15; due to emergency: 20; due to functional capacity or motivation: 15. Total: 70.

Calculate as follows:

Steps in calculation	Medicaid	Medicare & Medicaid	Neither	Total
Age and outpatient encounter-eligible consumers seen during MY	250	100	50	400
Exclusions	45	15	10	70
<b>Denominator</b>	<b>205</b>	<b>85</b>	<b>40</b>	<b>330</b>

**Numerator:** Calculate the numerator as follows, with the MP being the measurement year:

- Positive screen for clinical depression using a standardized tool and a follow-up plan documented (G8431).

<b>Steps in calculation</b>	<b>Medicaid</b>	<b>Medicare &amp; Medicaid</b>	<b>Neither</b>	<b>Total</b>
Denominator	205	85	40	330
Consumers screened for clinical depression with positive screen	100	55	5	160
Consumers with positive screen who had a follow-up plan documented on the same day	90	30	3	123
<b>Numerator</b>	<b>90</b>	<b>30</b>	<b>3</b>	<b>123</b>

*Quality Measure, percentage of consumers aged 12 years and older screened for clinical depression on the date of the encounter using an age-appropriate standardized depression screening tool, and if positive, a follow-up plan is documented on the date of the positive screen, by payer status:*

**Medicaid:**  $90/205 = .44$  or **44%**

**Medicare & Medicaid:**  $30/85 = .35$  or **35%**

**Neither:**  $3/40 = .08$  or **8%**

**Total:**  $123/330 = .37$  or **37%**

Metrics interpretation: For the Medicaid eligible population, 44% of consumers were screened and had a positive result for clinical depression and were also documented with a follow-up plan on the same date as the screening; whereas, 35% with both Medicare and Medicaid and 8% without Medicare or Medicaid (referred to as “Neither”) were both screened and positive for clinical depression and were documented to have a follow-up plan put in place on the same day.

See below for similar calculation stratified by age:



***Denominator:***

<b>Steps in calculation</b>	<b>Aged 12-17 years</b>	<b>Aged 18-64 years</b>	<b>Aged 65 years and older</b>	<b>Total</b>
Age and outpatient encounter-eligible consumers seen during MY	100	225	75	400
Exclusions	20	40	10	70
<b>Denominator</b>	<b>80</b>	<b>185</b>	<b>65</b>	<b>330</b>

***Numerator:***

<b>Steps in calculation</b>	<b>Aged 12-17 years</b>	<b>Aged 18-64 years</b>	<b>Aged 65 years and older</b>	<b>Total</b>
Denominator	80	185	65	<b>330</b>
Consumers screened for clinical depression with positive screen	65	170	35	270
Consumers with positive screen who had a follow-up plan documented on the same day	40	63	20	123
<b>Numerator</b>	<b>40</b>	<b>63</b>	<b>20</b>	<b>123</b>

***Quality Metric, percentage of consumers aged 12 years and older screened for clinical depression on the date of the encounter using an age-appropriate standardized depression screening tool, and if positive, a follow-up plan is documented on the date of the positive screen, by age category:***

**Aged 12-17:**  $40/80 = .50$  or **50%**

**Aged 18-64:**  $63/185 = .34$  or **34%**

**Aged 65 and older:**  $20/65 = .31$  or **31%**

**Total:**  $123/330 = .37$  or **37%**

Metrics interpretation: For those consumers in the eligible population aged 65 years and older, 31% who were screened and had a positive result for clinical depression were also documented with a follow-up plan on the same date as the screening; whereas, 34% of consumers aged 18 to 64 years and 50% of those aged 12 to 17 years had a positive clinical depression screen and follow-up plan was needed.

**Appendix CDF-BH.B: Screening for Clinical Depression and Follow-Up Plan****Table CDF-A. Codes to Identify Outpatient Visits**

<b>CPT</b>	<b>HCPCS</b>
90791, 90792, 90832, 90834, 90837, 90839, 92625, 96116, 96118, 96150, 96151, 97003, 99201, 99202, 99203, 99204, 99205, 99212, 99213, 99214, 99215	G0101, G0402, G0438, G0439, G0444

**Table CDF-B. Codes to Document Clinical Depression Screen**

<b>Code</b>	<b>Description</b>
G8431	Positive screen for clinical depression using a standardized tool and a follow-up plan documented.
G8510	Negative screen for clinical depression using standardized tool, patient not eligible/appropriate for follow-up plan documented.

**Table CDF-C. Codes to Identify Exclusions**

<b>Code</b>	<b>Description</b>
G8433	Screening for clinical depression not documented, patient not eligible/appropriate.
G8940	Screening for clinical depression documented, follow-up plan not documented, patient not eligible/appropriate.
Depression	F320, F321, F322, F323, F324, F325, F328, F329, F330, F331, F332, F333, F3340, F3341, F3342, F338, F339, F341
Bipolar Disorder	F310, F3110, F3111, F3112, F3113, F312, F3130, F3131, F3132, F314, F315, F3160, F3161, F3162, F3163, F3164, F3170, F3171, F3172, F3173, F3174, F3175, F3176, F3177, F3178, F3181, F3189, F319, F3010, F3011, F3012, F3013, F302, F303, F304, F308, F309

## Appendix DEP-REM-12. Depression Remission at Twelve Months

Adult consumers age 18 and older with Major Depression or Dysthymia and an initial PHQ-9 score > 9 who demonstrate remission at twelve months defined as a PHQ-9 score less than 5

### EXAMPLE

***Eligible Population or Denominator:***

1. 200 consumers seen at the clinic during the measurement year (MY)
2. Exclusions:
  - a. Died during MY: 10
  - b. Were in hospice during MY: 5
  - c. Became permanent nursing home resident during MY: 0
  - d. Had a diagnosis of bipolar disorder: 30
  - e. Had a diagnosis of personality disorder: 15

**Sum of a. – e. = 10+5+0+30+15=60**

**200-60=140 nonexcluded patients**

3. Of the 140 nonexcluded consumers, 100 were Medicaid beneficiaries and 20 were eligible for both Medicare and Medicaid, and 20 were neither.
4. Compute the rest of the denominator (N=140) as follows:

<b>Steps in calculation</b>	<b>Medicaid</b>	<b>Medicare &amp; Medicaid</b>	<b>Neither</b>	<b>Total</b>
Nonexcluded consumers seen during the MY	100	20	20	140
From those, consumers whose PHQ-9 score was greater than 9 (at the index date) during the MY	75	20	10	105

Appendix DEP-REM-12. Depression Remission at Twelve Months

Steps in calculation	Medicaid	Medicare & Medicaid	Neither	Total
From those, consumers with a primary <sup>9</sup> diagnosis of Major Depression or Dysthymia upon scoring greater than 9 on the PHQ-9 at the index date	55	20	5	80
From those, consumers aged 18 years and older on the index date when they had a PHQ-9 score greater than 9	40	15	5	60
<b>Denominator</b>	<b>40</b>	<b>15</b>	<b>5</b>	<b>60</b>

**Numerator:** Twelve months after the index date ( $\pm$  30 days), scored less than 5 on the PHQ-9:

Steps in calculation	Medicaid	Medicare & Medicaid	Neither	Total
Eligible consumers after exclusions	40	15	5	60
Not administered PHQ-9 during the 60 day window of twelve months	4	2	1	7
Tested during the 60 day window but scored 5 or higher on the PHQ-9	7	3	1	11
<b>Numerator</b>	<b>40-11=29</b>	<b>15-5=10</b>	<b>5-2=3</b>	<b>60-18=42</b>

**Quality Measure, percentage with 12-month depression remission:**

**Medicaid:**  $29/40 = .725 = .73$  or **73%**

**Medicare and Medicaid:**  $10/15 = .666 = .67$  or **67%**

**Neither:**  $3/5 = .60 = .60$  or **60%**

<sup>9</sup> Note that if the diagnosis and score greater than 9 was provided by a non-behavioral health provider, the diagnosis can be in any position.

Appendix DEP-REM-12. Depression Remission at Twelve Months

**Total:**  $42/60 = .70 = .70$  or **70%**

Measure interpretation: Of the Medicaid consumers in the eligible population aged 18 years and older with Major Depression or Dysthymia and an initial PHQ-9 score  $> 9$ , 73% demonstrated remission at twelve months defined as a PHQ-9 score less than 5.

## Appendix HOU: Housing Status

Percentage of consumers in 10 categories of living situation

### EXAMPLE

Assuming 100 consumers during the first half of the measurement year (MY) and 120 consumers during the second half of the MY, calculate this metric as follows:

<b>Living Situation</b>	<b>First Half of MY (N)</b>	<b>First Half of MY (%)</b>	<b>Second Half of MY (N)</b>	<b>Second Half of MY (%)</b>
Private residence	45	45%	49	41%
Foster home	8	8%	16	13%
Residential care	4	4%	6	5%
Crisis residence	3	3%	4	3%
Residential treatment center	5	5%	5	4%
Institutional setting	7	7%	6	5%
Jail (correctional facility)	9	9%	9	8%
Homeless (shelter)	15	15%	12	10%
Other	3	3%	2	2%
Not available	1	1%	11	9%
<b>Total</b>	<b>100</b>	<b>100%</b>	<b>120</b>	<b>100%</b>

Note: Some portion of these assessments will be made at admissions or discharges, and the remainder will be made at the most recent assessment or indication of living situation for the consumer during the measurement period.

## Appendix SU-A. ICD-10-CM Codes Relevant to Calculating Suicide Attempts

International Classification of Diseases, Tenth Revision, Clinical Modification (ICD-10-CM) codes that may apply to suicide attempts include those pertaining to drug overdoses (designated as “poisonings”), to ingestion of non-drugs (classified as poisoning with a toxic effect), and to other self-inflicted injuries. In addition, codes related to suicidal ideation and suicide attempt are available. Each category is provided below.

**Drug Overdose.** Unlike ICD-9-CM codes, ICD-10-CM codes for poisoning by drug overdose include both the drug poisoning and the circumstances of the poisoning (accidental, intentional, assault, and undetermined). These ICD-10-CM codes are included in code categories T36–T50, with the codes related to intentional overdose listed in Table 1 below.

**Table 1. Suicide Attempt by Intentional Drug Overdose Codes**

Code	Poisoning by Overdose
T360X2A	Poisoning by penicillins, intentional self-harm, initial encounter
T360X2D	Poisoning by penicillins, intentional self-harm, subsequent encounter
T360X2S	Poisoning by penicillins, intentional self-harm, sequela
T361X2A	Poisoning by cephalosporins and other beta-lactam antibiotics, intentional self-harm, initial encounter
T361X2D	Poisoning by cephalosporins and other beta-lactam antibiotics, intentional self-harm, subsequent encounter
T361X2S	Poisoning by cephalosporins and other beta-lactam antibiotics, intentional self-harm, sequela
T362X2A	Poisoning by chloramphenicol group, intentional self-harm, initial encounter
T362X2D	Poisoning by chloramphenicol group, intentional self-harm, subsequent encounter
T362X2S	Poisoning by chloramphenicol group, intentional self-harm, sequela
T363X2A	Poisoning by macrolides, intentional self-harm, initial encounter
T363X2D	Poisoning by macrolides, intentional self-harm, subsequent encounter
T363X2S	Poisoning by macrolides, intentional self-harm, sequela
T364X2A	Poisoning by tetracyclines, intentional self-harm, initial encounter
T364X2D	Poisoning by tetracyclines, intentional self-harm, subsequent encounter



Appendix SU-A. ICD-10-CM Codes Relevant to Calculating Suicide Attempts

<b>Code</b>	<b>Poisoning by Overdose</b>
T364X2S	Poisoning by tetracyclines, intentional self-harm, sequela
T365X2A	Poisoning by aminoglycosides, intentional self-harm, initial encounter
T365X2D	Poisoning by aminoglycosides, intentional self-harm, subsequent encounter
T365X2S	Poisoning by aminoglycosides, intentional self-harm, sequela
T366X2A	Poisoning by rifampicins, intentional self-harm, initial encounter
T366X2D	Poisoning by rifampicins, intentional self-harm, subsequent encounter
T366X2S	Poisoning by rifampicins, intentional self-harm, sequela
T367X2A	Poisoning by antifungal antibiotics, systemically used, intentional self-harm, initial encounter
T367X2D	Poisoning by antifungal antibiotics, systemically used, intentional self-harm, subsequent encounter
T367X2S	Poisoning by antifungal antibiotics, systemically used, intentional self-harm, sequela
T368X2A	Poisoning by other systemic antibiotics, intentional self-harm, initial encounter
T368X2D	Poisoning by other systemic antibiotics, intentional self-harm, subsequent encounter
T368X2S	Poisoning by other systemic antibiotics, intentional self-harm, sequela
T3692XA	Poisoning by unspecified systemic antibiotic, intentional self-harm, initial encounter
T3692XD	Poisoning by unspecified systemic antibiotic, intentional self-harm, subsequent encounter
T3692XS	Poisoning by unspecified systemic antibiotic, intentional self-harm, sequela
T370X2A	Poisoning by sulfonamides, intentional self-harm, initial encounter
T370X2D	Poisoning by sulfonamides, intentional self-harm, subsequent encounter
T370X2S	Poisoning by sulfonamides, intentional self-harm, sequela
T371X2A	Poisoning by antimycobacterial drugs, intentional self-harm, initial encounter
T371X2D	Poisoning by antimycobacterial drugs, intentional self-harm, subsequent encounter

## Appendix SU-A. ICD-10-CM Codes Relevant to Calculating Suicide Attempts

<b>Code</b>	<b>Poisoning by Overdose</b>
T371X2S	Poisoning by antimycobacterial drugs, intentional self-harm, sequela
T372X2A	Poisoning by antimalarials and drugs acting on other blood protozoa, intentional self-harm, initial encounter
T372X2D	Poisoning by antimalarials and drugs acting on other blood protozoa, intentional self-harm, subsequent encounter
T372X2S	Poisoning by antimalarials and drugs acting on other blood protozoa, intentional self-harm, sequela
T374X2A	Poisoning by anthelmintics, intentional self-harm, initial encounter
T374X2D	Poisoning by anthelmintics, intentional self-harm, subsequent encounter
T374X2S	Poisoning by anthelmintics, intentional self-harm, sequela
T375X2A	Poisoning by antiviral drugs, intentional self-harm, initial encounter
T375X2D	Poisoning by antiviral drugs, intentional self-harm, subsequent encounter
T375X2S	Poisoning by antiviral drugs, intentional self-harm, sequela
T378X2A	Poisoning by other specified systemic anti-infectives and antiparasitics, intentional self-harm, initial encounter
T378X2D	Poisoning by other specified systemic anti-infectives and antiparasitics, intentional self-harm, subsequent encounter
T378X2S	Poisoning by other specified systemic anti-infectives and antiparasitics, intentional self-harm, sequela
T3792XA	Poisoning by unspecified systemic anti-infective and antiparasitics, intentional self-harm, initial encounter
T3792XD	Poisoning by unspecified systemic anti-infective and antiparasitics, intentional self-harm, subsequent encounter
T3792XS	Poisoning by unspecified systemic anti-infective and antiparasitics, intentional self-harm, sequela
T380X2A	Poisoning by glucocorticoids and synthetic analogues, intentional self-harm, initial encounter
T380X2D	Poisoning by glucocorticoids and synthetic analogues, intentional self-harm, subsequent encounter

Appendix SU-A. ICD-10-CM Codes Relevant to Calculating Suicide Attempts

<b>Code</b>	<b>Poisoning by Overdose</b>
T380X2S	Poisoning by glucocorticoids and synthetic analogues, intentional self-harm, sequela
T381X2A	Poisoning by thyroid hormones and substitutes, intentional self-harm, initial encounter
T381X2D	Poisoning by thyroid hormones and substitutes, intentional self-harm, subsequent encounter
T381X2S	Poisoning by thyroid hormones and substitutes, intentional self-harm, sequela
T382X2A	Poisoning by antithyroid drugs, intentional self-harm, initial encounter
T382X2D	Poisoning by antithyroid drugs, intentional self-harm, subsequent encounter
T382X2S	Poisoning by antithyroid drugs, intentional self-harm, sequela
T383X2A	Poisoning by insulin and oral hypoglycemic [antidiabetic] drugs, intentional self-harm, initial encounter
T383X2D	Poisoning by insulin and oral hypoglycemic [antidiabetic] drugs, intentional self-harm, subsequent encounter
T383X2S	Poisoning by insulin and oral hypoglycemic [antidiabetic] drugs, intentional self-harm, sequela
T384X2A	Poisoning by oral contraceptives, intentional self-harm, initial encounter
T384X2D	Poisoning by oral contraceptives, intentional self-harm, subsequent encounter
T384X2S	Poisoning by oral contraceptives, intentional self-harm, sequela
T385X2A	Poisoning by other estrogens and progestogens, intentional self-harm, initial encounter
T385X2D	Poisoning by other estrogens and progestogens, intentional self-harm, subsequent encounter
T385X2S	Poisoning by other estrogens and progestogens, intentional self-harm, sequela
T386X2A	Poisoning by antigonadotrophins, antiestrogens, antiandrogens, not elsewhere classified, intentional self-harm, initial encounter
T386X2D	Poisoning by antigonadotrophins, antiestrogens, antiandrogens, not elsewhere classified, intentional self-harm, subsequent encounter

Appendix SU-A. ICD-10-CM Codes Relevant to Calculating Suicide Attempts

<b>Code</b>	<b>Poisoning by Overdose</b>
T386X2S	Poisoning by antigonadotrophins, antiestrogens, antiandrogens, not elsewhere classified, intentional self-harm, sequela
T387X2A	Poisoning by androgens and anabolic congeners, intentional self-harm, initial encounter
T387X2D	Poisoning by androgens and anabolic congeners, intentional self-harm, subsequent encounter
T387X2S	Poisoning by androgens and anabolic congeners, intentional self-harm, sequela
T38802A	Poisoning by unspecified hormones and synthetic substitutes, intentional self-harm, initial encounter
T38802D	Poisoning by unspecified hormones and synthetic substitutes, intentional self-harm, subsequent encounter
T38802S	Poisoning by unspecified hormones and synthetic substitutes, intentional self-harm, sequela
T38812A	Poisoning by anterior pituitary [adenohypophyseal] hormones, intentional self-harm, initial encounter
T38812D	Poisoning by anterior pituitary [adenohypophyseal] hormones, intentional self-harm, subsequent encounter
T38812S	Poisoning by anterior pituitary [adenohypophyseal] hormones, intentional self-harm, sequela
T38892A	Poisoning by other hormones and synthetic substitutes, intentional self-harm, initial encounter
T38892D	Poisoning by other hormones and synthetic substitutes, intentional self-harm, subsequent encounter
T38892S	Poisoning by other hormones and synthetic substitutes, intentional self-harm, sequela
T38902A	Poisoning by unspecified hormone antagonists, intentional self-harm, initial encounter
T38902D	Poisoning by unspecified hormone antagonists, intentional self-harm, subsequent encounter
T38902S	Poisoning by unspecified hormone antagonists, intentional self-harm, sequela

## Appendix SU-A. ICD-10-CM Codes Relevant to Calculating Suicide Attempts

<b>Code</b>	<b>Poisoning by Overdose</b>
T38992A	Poisoning by other hormone antagonists, intentional self-harm, initial encounter
T38992D	Poisoning by other hormone antagonists, intentional self-harm, subsequent encounter
T38992S	Poisoning by other hormone antagonists, intentional self-harm, sequela
T39012A	Poisoning by aspirin, intentional self-harm, initial encounter
T39012D	Poisoning by aspirin, intentional self-harm, subsequent encounter
T39012S	Poisoning by aspirin, intentional self-harm, sequela
T39092A	Poisoning by salicylates, intentional self-harm, initial encounter
T39092D	Poisoning by salicylates, intentional self-harm, subsequent encounter
T39092S	Poisoning by salicylates, intentional self-harm, sequela
T391X2A	Poisoning by 4-Aminophenol derivatives, intentional self-harm, initial encounter
T391X2D	Poisoning by 4-Aminophenol derivatives, intentional self-harm, subsequent encounter
T391X2S	Poisoning by 4-Aminophenol derivatives, intentional self-harm, sequela
T392X2A	Poisoning by pyrazolone derivatives, intentional self-harm, initial encounter
T392X2D	Poisoning by pyrazolone derivatives, intentional self-harm, subsequent encounter
T392X2S	Poisoning by pyrazolone derivatives, intentional self-harm, sequela
T39312A	Poisoning by propionic acid derivatives, intentional self-harm, initial encounter
T39312D	Poisoning by propionic acid derivatives, intentional self-harm, subsequent encounter
T39312S	Poisoning by propionic acid derivatives, intentional self-harm, sequela
T39392A	Poisoning by other nonsteroidal anti-inflammatory drugs [NSAID], intentional self-harm, initial encounter
T39392D	Poisoning by other nonsteroidal anti-inflammatory drugs [NSAID], intentional self-harm, subsequent encounter
T39392S	Poisoning by other nonsteroidal anti-inflammatory drugs [NSAID], intentional self-harm, sequela

Appendix SU-A. ICD-10-CM Codes Relevant to Calculating Suicide Attempts

<b>Code</b>	<b>Poisoning by Overdose</b>
T394X2A	Poisoning by antirheumatics, not elsewhere classified, intentional self-harm, initial encounter
T394X2D	Poisoning by antirheumatics, not elsewhere classified, intentional self-harm, subsequent encounter
T394X2S	Poisoning by antirheumatics, not elsewhere classified, intentional self-harm, sequela
T398X2A	Poisoning by other nonopioid analgesics and antipyretics, not elsewhere classified, intentional self-harm, initial encounter
T398X2D	Poisoning by other nonopioid analgesics and antipyretics, not elsewhere classified, intentional self-harm, subsequent encounter
T398X2S	Poisoning by other nonopioid analgesics and antipyretics, not elsewhere classified, intentional self-harm, sequela
T3992XA	Poisoning by unspecified nonopioid analgesic, antipyretic and antirheumatic, intentional self-harm, initial encounter
T3992XD	Poisoning by unspecified nonopioid analgesic, antipyretic and antirheumatic, intentional self-harm, subsequent encounter
T3992XS	Poisoning by unspecified nonopioid analgesic, antipyretic and antirheumatic, intentional self-harm, sequela
T400X2A	Poisoning by opium, intentional self-harm, initial encounter
T400X2D	Poisoning by opium, intentional self-harm, subsequent encounter
T400X2S	Poisoning by opium, intentional self-harm, sequela
T401X2A	Poisoning by heroin, intentional self-harm, initial encounter
T401X2D	Poisoning by heroin, intentional self-harm, subsequent encounter
T401X2S	Poisoning by heroin, intentional self-harm, sequela
T402X2A	Poisoning by other opioids, intentional self-harm, initial encounter
T402X2D	Poisoning by other opioids, intentional self-harm, subsequent encounter
T402X2S	Poisoning by other opioids, intentional self-harm, sequela
T403X2A	Poisoning by methadone, intentional self-harm, initial encounter

Appendix SU-A. ICD-10-CM Codes Relevant to Calculating Suicide Attempts

<b>Code</b>	<b>Poisoning by Overdose</b>
T403X2D	Poisoning by methadone, intentional self-harm, subsequent encounter
T403X2S	Poisoning by methadone, intentional self-harm, sequela
T404X2A	Poisoning by other synthetic narcotics, intentional self-harm, initial encounter
T404X2D	Poisoning by other synthetic narcotics, intentional self-harm, subsequent encounter
T404X2S	Poisoning by other synthetic narcotics, intentional self-harm, sequela
T405X2A	Poisoning by cocaine, intentional self-harm, initial encounter
T405X2D	Poisoning by cocaine, intentional self-harm, subsequent encounter
T405X2S	Poisoning by cocaine, intentional self-harm, sequela
T40602A	Poisoning by unspecified narcotics, intentional self-harm, initial encounter
T40602D	Poisoning by unspecified narcotics, intentional self-harm, subsequent encounter
T40602S	Poisoning by unspecified narcotics, intentional self-harm, sequela
T40692A	Poisoning by other narcotics, intentional self-harm, initial encounter
T40692D	Poisoning by other narcotics, intentional self-harm, subsequent encounter
T40692S	Poisoning by other narcotics, intentional self-harm, sequela
T407X2A	Poisoning by cannabis (derivatives), intentional self-harm, initial encounter
T407X2D	Poisoning by cannabis (derivatives), intentional self-harm, subsequent encounter
T407X2S	Poisoning by cannabis (derivatives), intentional self-harm, sequela
T408X2A	Poisoning by lysergide [LSD], intentional self-harm, initial encounter
T408X2D	Poisoning by lysergide [LSD], intentional self-harm, subsequent encounter
T408X2S	Poisoning by lysergide [LSD], intentional self-harm, sequela
T40902A	Poisoning by unspecified psychodysleptics [hallucinogens], intentional self-harm, initial encounter
T40902D	Poisoning by unspecified psychodysleptics [hallucinogens], intentional self-harm, subsequent encounter

## Appendix SU-A. ICD-10-CM Codes Relevant to Calculating Suicide Attempts

<b>Code</b>	<b>Poisoning by Overdose</b>
T40902S	Poisoning by unspecified psychodysleptics [hallucinogens], intentional self-harm, sequela
T40992A	Poisoning by other psychodysleptics [hallucinogens], intentional self-harm, initial encounter
T40992D	Poisoning by other psychodysleptics [hallucinogens], intentional self-harm, subsequent encounter
T40992S	Poisoning by other psychodysleptics [hallucinogens], intentional self-harm, sequela
T410X2A	Poisoning by inhaled anesthetics, intentional self-harm, initial encounter
T410X2D	Poisoning by inhaled anesthetics, intentional self-harm, subsequent encounter
T410X2S	Poisoning by inhaled anesthetics, intentional self-harm, sequela
T411X2A	Poisoning by intravenous anesthetics, intentional self-harm, initial encounter
T411X2D	Poisoning by intravenous anesthetics, intentional self-harm, subsequent encounter
T411X2S	Poisoning by intravenous anesthetics, intentional self-harm, sequela
T41202A	Poisoning by unspecified general anesthetics, intentional self-harm, initial encounter
T41202D	Poisoning by unspecified general anesthetics, intentional self-harm, subsequent encounter
T41202S	Poisoning by unspecified general anesthetics, intentional self-harm, sequela
T41292A	Poisoning by other general anesthetics, intentional self-harm, initial encounter
T41292D	Poisoning by other general anesthetics, intentional self-harm, subsequent encounter
T41292S	Poisoning by other general anesthetics, intentional self-harm, sequela
T413X2A	Poisoning by local anesthetics, intentional self-harm, initial encounter
T413X2D	Poisoning by local anesthetics, intentional self-harm, subsequent encounter
T413X2S	Poisoning by local anesthetics, intentional self-harm, sequela
T4142XA	Poisoning by unspecified anesthetic, intentional self-harm, initial encounter



Appendix SU-A. ICD-10-CM Codes Relevant to Calculating Suicide Attempts

<b>Code</b>	<b>Poisoning by Overdose</b>
T4142XD	Poisoning by unspecified anesthetic, intentional self-harm, subsequent encounter
T4142XS	Poisoning by unspecified anesthetic, intentional self-harm, sequela
T415X2A	Poisoning by therapeutic gases, intentional self-harm, initial encounter
T415X2D	Poisoning by therapeutic gases, intentional self-harm, subsequent encounter
T415X2S	Poisoning by therapeutic gases, intentional self-harm, sequela
T420X2A	Poisoning by hydantoin derivatives, intentional self-harm, initial encounter
T420X2D	Poisoning by hydantoin derivatives, intentional self-harm, subsequent encounter
T420X2S	Poisoning by hydantoin derivatives, intentional self-harm, sequela
T421X2A	Poisoning by iminostilbenes, intentional self-harm, initial encounter
T421X2D	Poisoning by iminostilbenes, intentional self-harm, subsequent encounter
T421X2S	Poisoning by iminostilbenes, intentional self-harm, sequela
T422X2A	Poisoning by succinimides and oxazolidinediones, intentional self-harm, initial encounter
T422X2D	Poisoning by succinimides and oxazolidinediones, intentional self-harm, subsequent encounter
T422X2S	Poisoning by succinimides and oxazolidinediones, intentional self-harm, sequela
T423X2A	Poisoning by barbiturates, intentional self-harm, initial encounter
T423X2D	Poisoning by barbiturates, intentional self-harm, subsequent encounter
T423X2S	Poisoning by barbiturates, intentional self-harm, sequela
T424X2A	Poisoning by benzodiazepines, intentional self-harm, initial encounter
T424X2D	Poisoning by benzodiazepines, intentional self-harm, subsequent encounter
T424X2S	Poisoning by benzodiazepines, intentional self-harm, sequela
T425X2A	Poisoning by mixed antiepileptics, intentional self-harm, initial encounter
T425X2D	Poisoning by mixed antiepileptics, intentional self-harm, subsequent encounter
T425X2S	Poisoning by mixed antiepileptics, intentional self-harm, sequela

## Appendix SU-A. ICD-10-CM Codes Relevant to Calculating Suicide Attempts

<b>Code</b>	<b>Poisoning by Overdose</b>
T426X2A	Poisoning by other antiepileptic and sedative-hypnotic drugs, intentional self-harm, initial encounter
T426X2D	Poisoning by other antiepileptic and sedative-hypnotic drugs, intentional self-harm, subsequent encounter
T426X2S	Poisoning by other antiepileptic and sedative-hypnotic drugs, intentional self-harm, sequela
T4272XA	Poisoning by unspecified antiepileptic and sedative-hypnotic drugs, intentional self-harm, initial encounter
T4272XD	Poisoning by unspecified antiepileptic and sedative-hypnotic drugs, intentional self-harm, subsequent encounter
T4272XS	Poisoning by unspecified antiepileptic and sedative-hypnotic drugs, intentional self-harm, sequela
T428X2A	Poisoning by antiparkinsonism drugs and other central muscle-tone depressants, intentional self-harm, initial encounter
T428X2D	Poisoning by antiparkinsonism drugs and other central muscle-tone depressants, intentional self-harm, subsequent encounter
T428X2S	Poisoning by antiparkinsonism drugs and other central muscle-tone depressants, intentional self-harm, sequela
T43012A	Poisoning by tricyclic antidepressants, intentional self-harm, initial encounter
T43012D	Poisoning by tricyclic antidepressants, intentional self-harm, subsequent encounter
T43012S	Poisoning by tricyclic antidepressants, intentional self-harm, sequela
T43022A	Poisoning by tetracyclic antidepressants, intentional self-harm, initial encounter
T43022D	Poisoning by tetracyclic antidepressants, intentional self-harm, subsequent encounter
T43022S	Poisoning by tetracyclic antidepressants, intentional self-harm, sequela
T431X2A	Poisoning by monoamine-oxidase-inhibitor antidepressants, intentional self-harm, initial encounter
T431X2D	Poisoning by monoamine-oxidase-inhibitor antidepressants, intentional self-harm, subsequent encounter

Appendix SU-A. ICD-10-CM Codes Relevant to Calculating Suicide Attempts

<b>Code</b>	<b>Poisoning by Overdose</b>
T431X2S	Poisoning by monoamine-oxidase-inhibitor antidepressants, intentional self-harm, sequela
T43202A	Poisoning by unspecified antidepressants, intentional self-harm, initial encounter
T43202D	Poisoning by unspecified antidepressants, intentional self-harm, subsequent encounter
T43202S	Poisoning by unspecified antidepressants, intentional self-harm, sequela
T43212A	Poisoning by selective serotonin and norepinephrine reuptake inhibitors, intentional self-harm, initial encounter
T43212D	Poisoning by selective serotonin and norepinephrine reuptake inhibitors, intentional self-harm, subsequent encounter
T43212S	Poisoning by selective serotonin and norepinephrine reuptake inhibitors, intentional self-harm, sequela
T43222A	Poisoning by selective serotonin reuptake inhibitors, intentional self-harm, initial encounter
T43222D	Poisoning by selective serotonin reuptake inhibitors, intentional self-harm, subsequent encounter
T43222S	Poisoning by selective serotonin reuptake inhibitors, intentional self-harm, sequela
T43292A	Poisoning by other antidepressants, intentional self-harm, initial encounter
T43292D	Poisoning by other antidepressants, intentional self-harm, subsequent encounter
T43292S	Poisoning by other antidepressants, intentional self-harm, sequela
T43592A	Poisoning by other antipsychotics and neuroleptics, intentional self-harm, initial encounter
T43592D	Poisoning by other antipsychotics and neuroleptics, intentional self-harm, subsequent encounter
T43592S	Poisoning by other antipsychotics and neuroleptics, intentional self-harm, sequela
T43602A	Poisoning by unspecified psychostimulants, intentional self-harm, initial encounter

Appendix SU-A. ICD-10-CM Codes Relevant to Calculating Suicide Attempts

<b>Code</b>	<b>Poisoning by Overdose</b>
T43602D	Poisoning by unspecified psychostimulants, intentional self-harm, subsequent encounter
T43602S	Poisoning by unspecified psychostimulants, intentional self-harm, sequela
T43612A	Poisoning by caffeine, intentional self-harm, initial encounter
T43612D	Poisoning by caffeine, intentional self-harm, subsequent encounter
T43612S	Poisoning by caffeine, intentional self-harm, sequela
T43613A	Poisoning by caffeine, assault, initial encounter
T43622A	Poisoning by amphetamines, intentional self-harm, initial encounter
T43622D	Poisoning by amphetamines, intentional self-harm, subsequent encounter
T43622S	Poisoning by amphetamines, intentional self-harm, sequela
T43632A	Poisoning by methylphenidate, intentional self-harm, initial encounter
T43632D	Poisoning by methylphenidate, intentional self-harm, subsequent encounter
T43632S	Poisoning by methylphenidate, intentional self-harm, sequela
T43692A	Poisoning by other psychostimulants, intentional self-harm, initial encounter
T43692D	Poisoning by other psychostimulants, intentional self-harm, subsequent encounter
T43692S	Poisoning by other psychostimulants, intentional self-harm, sequela
T438X2A	Poisoning by other psychotropic drugs, intentional self-harm, initial encounter
T438X2D	Poisoning by other psychotropic drugs, intentional self-harm, subsequent encounter
T438X2S	Poisoning by other psychotropic drugs, intentional self-harm, sequela
T4392XA	Poisoning by unspecified psychotropic drug, intentional self-harm, initial encounter
T4392XD	Poisoning by unspecified psychotropic drug, intentional self-harm, subsequent encounter
T4392XS	Poisoning by unspecified psychotropic drug, intentional self-harm, sequela
T440X2A	Poisoning by anticholinesterase agents, intentional self-harm, initial encounter

Appendix SU-A. ICD-10-CM Codes Relevant to Calculating Suicide Attempts

<b>Code</b>	<b>Poisoning by Overdose</b>
T440X2D	Poisoning by anticholinesterase agents, intentional self-harm, subsequent encounter
T440X2S	Poisoning by anticholinesterase agents, intentional self-harm, sequela
T441X2A	Poisoning by other parasympathomimetics [cholinergics], intentional self-harm, initial encounter
T441X2D	Poisoning by other parasympathomimetics [cholinergics], intentional self-harm, subsequent encounter
T441X2S	Poisoning by other parasympathomimetics [cholinergics], intentional self-harm, sequela
T442X2A	Poisoning by ganglionic blocking drugs, intentional self-harm, initial encounter
T442X2D	Poisoning by ganglionic blocking drugs, intentional self-harm, subsequent encounter
T442X2S	Poisoning by ganglionic blocking drugs, intentional self-harm, sequela
T443X2A	Poisoning by other parasympatholytics [anticholinergics and antimuscarinics] and spasmolytics, intentional self-harm, initial encounter
T443X2D	Poisoning by other parasympatholytics [anticholinergics and antimuscarinics] and spasmolytics, intentional self-harm, subsequent encounter
T443X2S	Poisoning by other parasympatholytics [anticholinergics and antimuscarinics] and spasmolytics, intentional self-harm, sequela
T444X2A	Poisoning by predominantly alpha-adrenoreceptor agonists, intentional self-harm, initial encounter
T444X2D	Poisoning by predominantly alpha-adrenoreceptor agonists, intentional self-harm, subsequent encounter
T444X2S	Poisoning by predominantly alpha-adrenoreceptor agonists, intentional self-harm, sequela
T445X2A	Poisoning by predominantly beta-adrenoreceptor agonists, intentional self-harm, initial encounter
T445X2D	Poisoning by predominantly beta-adrenoreceptor agonists, intentional self-harm, subsequent encounter

Appendix SU-A. ICD-10-CM Codes Relevant to Calculating Suicide Attempts

<b>Code</b>	<b>Poisoning by Overdose</b>
T445X2S	Poisoning by predominantly beta-adrenoreceptor agonists, intentional self-harm, sequela
T446X2A	Poisoning by alpha-adrenoreceptor antagonists, intentional self-harm, initial encounter
T446X2D	Poisoning by alpha-adrenoreceptor antagonists, intentional self-harm, subsequent encounter
T446X2S	Poisoning by alpha-adrenoreceptor antagonists, intentional self-harm, sequela
T447X2A	Poisoning by beta-adrenoreceptor antagonists, intentional self-harm, initial encounter
T447X2D	Poisoning by beta-adrenoreceptor antagonists, intentional self-harm, subsequent encounter
T447X2S	Poisoning by beta-adrenoreceptor antagonists, intentional self-harm, sequela
T448X2A	Poisoning by centrally-acting and adrenergic-neuron-blocking agents, intentional self-harm, initial encounter
T448X2D	Poisoning by centrally-acting and adrenergic-neuron-blocking agents, intentional self-harm, subsequent encounter
T448X2S	Poisoning by centrally-acting and adrenergic-neuron-blocking agents, intentional self-harm, sequela
T44902A	Poisoning by unspecified drugs primarily affecting the autonomic nervous system, intentional self-harm, initial encounter
T44902D	Poisoning by unspecified drugs primarily affecting the autonomic nervous system, intentional self-harm, subsequent encounter
T44902S	Poisoning by unspecified drugs primarily affecting the autonomic nervous system, intentional self-harm, sequela
T44992A	Poisoning by other drug primarily affecting the autonomic nervous system, intentional self-harm, initial encounter
T44992D	Poisoning by other drug primarily affecting the autonomic nervous system, intentional self-harm, subsequent encounter
T44992S	Poisoning by other drug primarily affecting the autonomic nervous system, intentional self-harm, sequela

Appendix SU-A. ICD-10-CM Codes Relevant to Calculating Suicide Attempts

<b>Code</b>	<b>Poisoning by Overdose</b>
T450X2A	Poisoning by antiallergic and antiemetic drugs, intentional self-harm, initial encounter
T450X2D	Poisoning by antiallergic and antiemetic drugs, intentional self-harm, subsequent encounter
T450X2S	Poisoning by antiallergic and antiemetic drugs, intentional self-harm, sequela
T451X2A	Poisoning by antineoplastic and immunosuppressive drugs, intentional self-harm, initial encounter
T451X2D	Poisoning by antineoplastic and immunosuppressive drugs, intentional self-harm, subsequent encounter
T451X2S	Poisoning by antineoplastic and immunosuppressive drugs, intentional self-harm, sequela
T452X2A	Poisoning by vitamins, intentional self-harm, initial encounter
T452X2D	Poisoning by vitamins, intentional self-harm, subsequent encounter
T452X2S	Poisoning by vitamins, intentional self-harm, sequela
T453X2A	Poisoning by enzymes, intentional self-harm, initial encounter
T453X2D	Poisoning by enzymes, intentional self-harm, subsequent encounter
T453X2S	Poisoning by enzymes, intentional self-harm, sequela
T454X2A	Poisoning by iron and its compounds, intentional self-harm, initial encounter
T454X2D	Poisoning by iron and its compounds, intentional self-harm, subsequent encounter
T454X2S	Poisoning by iron and its compounds, intentional self-harm, sequela
T45512A	Poisoning by anticoagulants, intentional self-harm, initial encounter
T45512D	Poisoning by anticoagulants, intentional self-harm, subsequent encounter
T45512S	Poisoning by anticoagulants, intentional self-harm, sequela
T45522A	Poisoning by antithrombotic drugs, intentional self-harm, initial encounter
T45522D	Poisoning by antithrombotic drugs, intentional self-harm, subsequent encounter
T45522S	Poisoning by antithrombotic drugs, intentional self-harm, sequela

Appendix SU-A. ICD-10-CM Codes Relevant to Calculating Suicide Attempts

<b>Code</b>	<b>Poisoning by Overdose</b>
T45602A	Poisoning by unspecified fibrinolysis-affecting drugs, intentional self-harm, initial encounter
T45602D	Poisoning by unspecified fibrinolysis-affecting drugs, intentional self-harm, subsequent encounter
T45602S	Poisoning by unspecified fibrinolysis-affecting drugs, intentional self-harm, sequela
T45612A	Poisoning by thrombolytic drug, intentional self-harm, initial encounter
T45612D	Poisoning by thrombolytic drug, intentional self-harm, subsequent encounter
T45612S	Poisoning by thrombolytic drug, intentional self-harm, sequela
T45622A	Poisoning by hemostatic drug, intentional self-harm, initial encounter
T45622D	Poisoning by hemostatic drug, intentional self-harm, subsequent encounter
T45622S	Poisoning by hemostatic drug, intentional self-harm, sequela
T45692A	Poisoning by other fibrinolysis-affecting drugs, intentional self-harm, initial encounter
T45692D	Poisoning by other fibrinolysis-affecting drugs, intentional self-harm, subsequent encounter
T45692S	Poisoning by other fibrinolysis-affecting drugs, intentional self-harm, sequela
T457X2A	Poisoning by anticoagulant antagonists, vitamin K and other coagulants, intentional self-harm, initial encounter
T457X2D	Poisoning by anticoagulant antagonists, vitamin K and other coagulants, intentional self-harm, subsequent encounter
T457X2S	Poisoning by anticoagulant antagonists, vitamin K and other coagulants, intentional self-harm, sequela
T458X2A	Poisoning by other primarily systemic and hematological agents, intentional self-harm, initial encounter
T458X2D	Poisoning by other primarily systemic and hematological agents, intentional self-harm, subsequent encounter
T458X2S	Poisoning by other primarily systemic and hematological agents, intentional self-harm, sequela



Appendix SU-A. ICD-10-CM Codes Relevant to Calculating Suicide Attempts

<b>Code</b>	<b>Poisoning by Overdose</b>
T4592XA	Poisoning by unspecified primarily systemic and hematological agent, intentional self-harm, initial encounter
T4592XD	Poisoning by unspecified primarily systemic and hematological agent, intentional self-harm, subsequent encounter
T4592XS	Poisoning by unspecified primarily systemic and hematological agent, intentional self-harm, sequela
T460X2A	Poisoning by cardiac-stimulant glycosides and drugs of similar action, intentional self-harm, initial encounter
T460X2D	Poisoning by cardiac-stimulant glycosides and drugs of similar action, intentional self-harm, subsequent encounter
T460X2S	Poisoning by cardiac-stimulant glycosides and drugs of similar action, intentional self-harm, sequela
T461X2A	Poisoning by calcium-channel blockers, intentional self-harm, initial encounter
T461X2D	Poisoning by calcium-channel blockers, intentional self-harm, subsequent encounter
T461X2S	Poisoning by calcium-channel blockers, intentional self-harm, sequela
T462X2A	Poisoning by other antidysrhythmic drugs, intentional self-harm, initial encounter
T462X2D	Poisoning by other antidysrhythmic drugs, intentional self-harm, subsequent encounter
T462X2S	Poisoning by other antidysrhythmic drugs, intentional self-harm, sequela
T463X2A	Poisoning by coronary vasodilators, intentional self-harm, initial encounter
T463X2D	Poisoning by coronary vasodilators, intentional self-harm, subsequent encounter
T463X2S	Poisoning by coronary vasodilators, intentional self-harm, sequela
T464X2A	Poisoning by angiotensin-converting-enzyme inhibitors, intentional self-harm, initial encounter
T464X2D	Poisoning by angiotensin-converting-enzyme inhibitors, intentional self-harm, subsequent encounter

Appendix SU-A. ICD-10-CM Codes Relevant to Calculating Suicide Attempts

<b>Code</b>	<b>Poisoning by Overdose</b>
T464X2S	Poisoning by angiotensin-converting-enzyme inhibitors, intentional self-harm, sequela
T465X2A	Poisoning by other antihypertensive drugs, intentional self-harm, initial encounter
T465X2D	Poisoning by other antihypertensive drugs, intentional self-harm, subsequent encounter
T465X2S	Poisoning by other antihypertensive drugs, intentional self-harm, sequela
T466X2A	Poisoning by antihyperlipidemic and antiarteriosclerotic drugs, intentional self-harm, initial encounter
T466X2D	Poisoning by antihyperlipidemic and antiarteriosclerotic drugs, intentional self-harm, subsequent encounter
T466X2S	Poisoning by antihyperlipidemic and antiarteriosclerotic drugs, intentional self-harm, sequela
T467X2A	Poisoning by peripheral vasodilators, intentional self-harm, initial encounter
T467X2D	Poisoning by peripheral vasodilators, intentional self-harm, subsequent encounter
T467X2S	Poisoning by peripheral vasodilators, intentional self-harm, sequela
T468X2A	Poisoning by antivaricose drugs, including sclerosing agents, intentional self-harm, initial encounter
T468X2D	Poisoning by antivaricose drugs, including sclerosing agents, intentional self-harm, subsequent encounter
T468X2S	Poisoning by antivaricose drugs, including sclerosing agents, intentional self-harm, sequela
T46902A	Poisoning by unspecified agents primarily affecting the cardiovascular system, intentional self-harm, initial encounter
T46902D	Poisoning by unspecified agents primarily affecting the cardiovascular system, intentional self-harm, subsequent encounter
T46902S	Poisoning by unspecified agents primarily affecting the cardiovascular system, intentional self-harm, sequela

Appendix SU-A. ICD-10-CM Codes Relevant to Calculating Suicide Attempts

<b>Code</b>	<b>Poisoning by Overdose</b>
T46992A	Poisoning by other agents primarily affecting the cardiovascular system, intentional self-harm, initial encounter
T46992D	Poisoning by other agents primarily affecting the cardiovascular system, intentional self-harm, subsequent encounter
T46992S	Poisoning by other agents primarily affecting the cardiovascular system, intentional self-harm, sequela
T470X2A	Poisoning by histamine H2-receptor blockers, intentional self-harm, initial encounter
T470X2D	Poisoning by histamine H2-receptor blockers, intentional self-harm, subsequent encounter
T470X2S	Poisoning by histamine H2-receptor blockers, intentional self-harm, sequela
T471X2A	Poisoning by other antacids and anti-gastric-secretion drugs, intentional self-harm, initial encounter
T471X2D	Poisoning by other antacids and anti-gastric-secretion drugs, intentional self-harm, subsequent encounter
T471X2S	Poisoning by other antacids and anti-gastric-secretion drugs, intentional self-harm, sequela
T472X2A	Poisoning by stimulant laxatives, intentional self-harm, initial encounter
T472X2D	Poisoning by stimulant laxatives, intentional self-harm, subsequent encounter
T472X2S	Poisoning by stimulant laxatives, intentional self-harm, sequela
T473X2A	Poisoning by saline and osmotic laxatives, intentional self-harm, initial encounter
T473X2D	Poisoning by saline and osmotic laxatives, intentional self-harm, subsequent encounter
T473X2S	Poisoning by saline and osmotic laxatives, intentional self-harm, sequela
T474X2A	Poisoning by other laxatives, intentional self-harm, initial encounter
T474X2D	Poisoning by other laxatives, intentional self-harm, subsequent encounter
T474X2S	Poisoning by other laxatives, intentional self-harm, sequela
T475X2A	Poisoning by digestants, intentional self-harm, initial encounter

## Appendix SU-A. ICD-10-CM Codes Relevant to Calculating Suicide Attempts

<b>Code</b>	<b>Poisoning by Overdose</b>
T475X2D	Poisoning by digestants, intentional self-harm, subsequent encounter
T475X2S	Poisoning by digestants, intentional self-harm, sequela
T476X2A	Poisoning by antidiarrheal drugs, intentional self-harm, initial encounter
T476X2D	Poisoning by antidiarrheal drugs, intentional self-harm, subsequent encounter
T476X2S	Poisoning by antidiarrheal drugs, intentional self-harm, sequela
T477X2A	Poisoning by emetics, intentional self-harm, initial encounter
T477X2D	Poisoning by emetics, intentional self-harm, subsequent encounter
T477X2S	Poisoning by emetics, intentional self-harm, sequela
T478X2A	Poisoning by other agents primarily affecting gastrointestinal system, intentional self-harm, initial encounter
T478X2D	Poisoning by other agents primarily affecting gastrointestinal system, intentional self-harm, subsequent encounter
T478X2S	Poisoning by other agents primarily affecting gastrointestinal system, intentional self-harm, sequela
T4792XA	Poisoning by unspecified agents primarily affecting the gastrointestinal system, intentional self-harm, initial encounter
T4792XD	Poisoning by unspecified agents primarily affecting the gastrointestinal system, intentional self-harm, subsequent encounter
T4792XS	Poisoning by unspecified agents primarily affecting the gastrointestinal system, intentional self-harm, sequela
T480X2A	Poisoning by oxytocic drugs, intentional self-harm, initial encounter
T480X2D	Poisoning by oxytocic drugs, intentional self-harm, subsequent encounter
T480X2S	Poisoning by oxytocic drugs, intentional self-harm, sequela
T481X2A	Poisoning by skeletal muscle relaxants [neuromuscular blocking agents], intentional self-harm, initial encounter
T481X2D	Poisoning by skeletal muscle relaxants [neuromuscular blocking agents], intentional self-harm, subsequent encounter

Appendix SU-A. ICD-10-CM Codes Relevant to Calculating Suicide Attempts

<b>Code</b>	<b>Poisoning by Overdose</b>
T481X2S	Poisoning by skeletal muscle relaxants [neuromuscular blocking agents], intentional self-harm, sequela
T48202A	Poisoning by unspecified drugs acting on muscles, intentional self-harm, initial encounter
T48202D	Poisoning by unspecified drugs acting on muscles, intentional self-harm, subsequent encounter
T48202S	Poisoning by unspecified drugs acting on muscles, intentional self-harm, sequela
T48292A	Poisoning by other drugs acting on muscles, intentional self-harm, initial encounter
T48292D	Poisoning by other drugs acting on muscles, intentional self-harm, subsequent encounter
T48292S	Poisoning by other drugs acting on muscles, intentional self-harm, sequela
T483X2A	Poisoning by antitussives, intentional self-harm, initial encounter
T483X2D	Poisoning by antitussives, intentional self-harm, subsequent encounter
T483X2S	Poisoning by antitussives, intentional self-harm, sequela
T484X2A	Poisoning by expectorants, intentional self-harm, initial encounter
T484X2D	Poisoning by expectorants, intentional self-harm, subsequent encounter
T484X2S	Poisoning by expectorants, intentional self-harm, sequela
T485X2A	Poisoning by other anti-common-cold drugs, intentional self-harm, initial encounter
T485X2D	Poisoning by other anti-common-cold drugs, intentional self-harm, subsequent encounter
T485X2S	Poisoning by other anti-common-cold drugs, intentional self-harm, sequela
T486X2A	Poisoning by antiasthmatics, intentional self-harm, initial encounter
T486X2D	Poisoning by antiasthmatics, intentional self-harm, subsequent encounter
T486X2S	Poisoning by antiasthmatics, intentional self-harm, sequela
T48902A	Poisoning by unspecified agents primarily acting on the respiratory system, intentional self-harm, initial encounter

Appendix SU-A. ICD-10-CM Codes Relevant to Calculating Suicide Attempts

<b>Code</b>	<b>Poisoning by Overdose</b>
T48902D	Poisoning by unspecified agents primarily acting on the respiratory system, intentional self-harm, subsequent encounter
T48902S	Poisoning by unspecified agents primarily acting on the respiratory system, intentional self-harm, sequela
T48992A	Poisoning by other agents primarily acting on the respiratory system, intentional self-harm, initial encounter
T48992D	Poisoning by other agents primarily acting on the respiratory system, intentional self-harm, subsequent encounter
T48992S	Poisoning by other agents primarily acting on the respiratory system, intentional self-harm, sequela
T490X2A	Poisoning by local antifungal, anti-infective and anti-inflammatory drugs, intentional self-harm, initial encounter
T490X2D	Poisoning by local antifungal, anti-infective and anti-inflammatory drugs, intentional self-harm, subsequent encounter
T490X2S	Poisoning by local antifungal, anti-infective and anti-inflammatory drugs, intentional self-harm, sequela
T491X2A	Poisoning by antipruritics, intentional self-harm, initial encounter
T491X2D	Poisoning by antipruritics, intentional self-harm, subsequent encounter
T491X2S	Poisoning by antipruritics, intentional self-harm, sequela
T492X2A	Poisoning by local astringents and local detergents, intentional self-harm, initial encounter
T492X2D	Poisoning by local astringents and local detergents, intentional self-harm, subsequent encounter
T492X2S	Poisoning by local astringents and local detergents, intentional self-harm, sequela
T493X2A	Poisoning by emollients, demulcents and protectants, intentional self-harm, initial encounter
T493X2D	Poisoning by emollients, demulcents and protectants, intentional self-harm, subsequent encounter

Appendix SU-A. ICD-10-CM Codes Relevant to Calculating Suicide Attempts

<b>Code</b>	<b>Poisoning by Overdose</b>
T493X2S	Poisoning by emollients, demulcents and protectants, intentional self-harm, sequela
T494X2A	Poisoning by keratolytics, keratoplastics, and other hair treatment drugs and preparations, intentional self-harm, initial encounter
T494X2D	Poisoning by keratolytics, keratoplastics, and other hair treatment drugs and preparations, intentional self-harm, subsequent encounter
T494X2S	Poisoning by keratolytics, keratoplastics, and other hair treatment drugs and preparations, intentional self-harm, sequela
T495X2A	Poisoning by ophthalmological drugs and preparations, intentional self-harm, initial encounter
T495X2D	Poisoning by ophthalmological drugs and preparations, intentional self-harm, subsequent encounter
T495X2S	Poisoning by ophthalmological drugs and preparations, intentional self-harm, sequela
T496X2A	Poisoning by otorhinolaryngological drugs and preparations, intentional self-harm, initial encounter
T496X2D	Poisoning by otorhinolaryngological drugs and preparations, intentional self-harm, subsequent encounter
T496X2S	Poisoning by otorhinolaryngological drugs and preparations, intentional self-harm, sequela
T497X2A	Poisoning by dental drugs, topically applied, intentional self-harm, initial encounter
T497X2D	Poisoning by dental drugs, topically applied, intentional self-harm, subsequent encounter
T497X2S	Poisoning by dental drugs, topically applied, intentional self-harm, sequela
T498X2A	Poisoning by other topical agents, intentional self-harm, initial encounter
T498X2D	Poisoning by other topical agents, intentional self-harm, subsequent encounter
T498X2S	Poisoning by other topical agents, intentional self-harm, sequela
T4992XA	Poisoning by unspecified topical agent, intentional self-harm, initial encounter

Appendix SU-A. ICD-10-CM Codes Relevant to Calculating Suicide Attempts

<b>Code</b>	<b>Poisoning by Overdose</b>
T4992XD	Poisoning by unspecified topical agent, intentional self-harm, subsequent encounter
T4992XS	Poisoning by unspecified topical agent, intentional self-harm, sequela
T500X2A	Poisoning by mineralocorticoids and their antagonists, intentional self-harm, initial encounter
T500X2D	Poisoning by mineralocorticoids and their antagonists, intentional self-harm, subsequent encounter
T500X2S	Poisoning by mineralocorticoids and their antagonists, intentional self-harm, sequela
T501X2A	Poisoning by loop [high-ceiling] diuretics, intentional self-harm, initial encounter
T501X2D	Poisoning by loop [high-ceiling] diuretics, intentional self-harm, subsequent encounter
T501X2S	Poisoning by loop [high-ceiling] diuretics, intentional self-harm, sequela
T502X2A	Poisoning by carbonic-anhydrase inhibitors, benzothiadiazides and other diuretics, intentional self-harm, initial encounter
T502X2D	Poisoning by carbonic-anhydrase inhibitors, benzothiadiazides and other diuretics, intentional self-harm, subsequent encounter
T502X2S	Poisoning by carbonic-anhydrase inhibitors, benzothiadiazides and other diuretics, intentional self-harm, sequela
T503X2A	Poisoning by electrolytic, caloric and water-balance agents, intentional self-harm, initial encounter
T503X2D	Poisoning by electrolytic, caloric and water-balance agents, intentional self-harm, subsequent encounter
T503X2S	Poisoning by electrolytic, caloric and water-balance agents, intentional self-harm, sequela
T504X2A	Poisoning by drugs affecting uric acid metabolism, intentional self-harm, initial encounter
T504X2D	Poisoning by drugs affecting uric acid metabolism, intentional self-harm, subsequent encounter



Appendix SU-A. ICD-10-CM Codes Relevant to Calculating Suicide Attempts

<b>Code</b>	<b>Poisoning by Overdose</b>
T504X2S	Poisoning by drugs affecting uric acid metabolism, intentional self-harm, sequela
T505X2A	Poisoning by appetite depressants, intentional self-harm, initial encounter
T505X2D	Poisoning by appetite depressants, intentional self-harm, subsequent encounter
T505X2S	Poisoning by appetite depressants, intentional self-harm, sequela
T506X2A	Poisoning by antidotes and chelating agents, intentional self-harm, initial encounter
T506X2D	Poisoning by antidotes and chelating agents, intentional self-harm, subsequent encounter
T506X2S	Poisoning by antidotes and chelating agents, intentional self-harm, sequela
T507X2A	Poisoning by analeptics and opioid receptor antagonists, intentional self-harm, initial encounter
T507X2D	Poisoning by analeptics and opioid receptor antagonists, intentional self-harm, subsequent encounter
T507X2S	Poisoning by analeptics and opioid receptor antagonists, intentional self-harm, sequela
T508X2A	Poisoning by diagnostic agents, intentional self-harm, initial encounter
T508X2D	Poisoning by diagnostic agents, intentional self-harm, subsequent encounter
T508X2S	Poisoning by diagnostic agents, intentional self-harm, sequela
T50902A	Poisoning by unspecified drugs, medicaments and biological substances, intentional self-harm, initial encounter
T50902D	Poisoning by unspecified drugs, medicaments and biological substances, intentional self-harm, subsequent encounter
T50902S	Poisoning by unspecified drugs, medicaments and biological substances, intentional self-harm, sequela
T50992A	Poisoning by other drugs, medicaments and biological substances, intentional self-harm, initial encounter
T50992D	Poisoning by other drugs, medicaments and biological substances, intentional self-harm, subsequent encounter

Appendix SU-A. ICD-10-CM Codes Relevant to Calculating Suicide Attempts

<b>Code</b>	<b>Poisoning by Overdose</b>
T50992S	Poisoning by other drugs, medicaments and biological substances, intentional self-harm, sequela
T50A12A	Poisoning by pertussis vaccine, including combinations with a pertussis component, intentional self-harm, initial encounter
T50A12D	Poisoning by pertussis vaccine, including combinations with a pertussis component, intentional self-harm, subsequent encounter
T50A12S	Poisoning by pertussis vaccine, including combinations with a pertussis component, intentional self-harm, sequela
T50A22A	Poisoning by mixed bacterial vaccines without a pertussis component, intentional self-harm, initial encounter
T50A22D	Poisoning by mixed bacterial vaccines without a pertussis component, intentional self-harm, subsequent encounter
T50A22S	Poisoning by mixed bacterial vaccines without a pertussis component, intentional self-harm, sequela
T50A92A	Poisoning by other bacterial vaccines, intentional self-harm, initial encounter
T50A92D	Poisoning by other bacterial vaccines, intentional self-harm, subsequent encounter
T50A92S	Poisoning by other bacterial vaccines, intentional self-harm, sequela
T50B12A	Poisoning by smallpox vaccines, intentional self-harm, initial encounter
T50B12D	Poisoning by smallpox vaccines, intentional self-harm, subsequent encounter
T50B12S	Poisoning by smallpox vaccines, intentional self-harm, sequela
T50B92A	Poisoning by other viral vaccines, intentional self-harm, initial encounter
T50B92D	Poisoning by other viral vaccines, intentional self-harm, subsequent encounter
T50B92S	Poisoning by other viral vaccines, intentional self-harm, sequela
T50Z12A	Poisoning by immunoglobulin, intentional self-harm, initial encounter
T50Z12D	Poisoning by immunoglobulin, intentional self-harm, subsequent encounter
T50Z12S	Poisoning by immunoglobulin, intentional self-harm, sequela

<b>Code</b>	<b>Poisoning by Overdose</b>
T50Z92A	Poisoning by other vaccines and biological substances, intentional self-harm, initial encounter
T50Z92D	Poisoning by other vaccines and biological substances, intentional self-harm, subsequent encounter
T50Z92S	Poisoning by other vaccines and biological substances, intentional self-harm, sequela

**Intentional Toxic Exposure.** ICD-10-CM codes for poisoning by toxic exposure, primarily from nonmedicinal substances, are similar to those for drugs; they are categorized as accidental, intentional, assault, and undetermined, and are coded in categories T51-T65. The codes related to intentional poisoning are listed in Table 2 below.

**Table 2. Suicide Attempt by Intentional Toxic Exposure Codes**

<b>Code</b>	<b>Poisoning by Toxic Effect</b>
T510X2A	Toxic effect of ethanol, intentional self-harm, initial encounter
T510X2D	Toxic effect of ethanol, intentional self-harm, subsequent encounter
T510X2S	Toxic effect of ethanol, intentional self-harm, sequela
T511X2A	Toxic effect of methanol, intentional self-harm, initial encounter
T511X2D	Toxic effect of methanol, intentional self-harm, subsequent encounter
T511X2S	Toxic effect of methanol, intentional self-harm, sequela
T512X2A	Toxic effect of 2-Propanol, intentional self-harm, initial encounter
T512X2D	Toxic effect of 2-Propanol, intentional self-harm, subsequent encounter
T512X2S	Toxic effect of 2-Propanol, intentional self-harm, sequela
T513X2A	Toxic effect of fusel oil, intentional self-harm, initial encounter
T513X2D	Toxic effect of fusel oil, intentional self-harm, subsequent encounter
T513X2S	Toxic effect of fusel oil, intentional self-harm, sequela
T518X2A	Toxic effect of other alcohols, intentional self-harm, initial encounter
T518X2D	Toxic effect of other alcohols, intentional self-harm, subsequent encounter
T518X2S	Toxic effect of other alcohols, intentional self-harm, sequela

## Appendix SU-A. ICD-10-CM Codes Relevant to Calculating Suicide Attempts

<b>Code</b>	<b>Poisoning by Toxic Effect</b>
T5192XA	Toxic effect of unspecified alcohol, intentional self-harm, initial encounter
T5192XD	Toxic effect of unspecified alcohol, intentional self-harm, subsequent encounter
T5192XS	Toxic effect of unspecified alcohol, intentional self-harm, sequela
T520X2A	Toxic effect of petroleum products, intentional self-harm, initial encounter
T520X2D	Toxic effect of petroleum products, intentional self-harm, subsequent encounter
T520X2S	Toxic effect of petroleum products, intentional self-harm, sequela
T521X2A	Toxic effect of benzene, intentional self-harm, initial encounter
T521X2D	Toxic effect of benzene, intentional self-harm, subsequent encounter
T521X2S	Toxic effect of benzene, intentional self-harm, sequela
T522X2A	Toxic effect of homologues of benzene, intentional self-harm, initial encounter
T522X2D	Toxic effect of homologues of benzene, intentional self-harm, subsequent encounter
T522X2S	Toxic effect of homologues of benzene, intentional self-harm, sequela
T523X2A	Toxic effect of glycols, intentional self-harm, initial encounter
T523X2D	Toxic effect of glycols, intentional self-harm, subsequent encounter
T523X2S	Toxic effect of glycols, intentional self-harm, sequela
T524X2A	Toxic effect of ketones, intentional self-harm, initial encounter
T524X2D	Toxic effect of ketones, intentional self-harm, subsequent encounter
T524X2S	Toxic effect of ketones, intentional self-harm, sequela
T528X2A	Toxic effect of other organic solvents, intentional self-harm, initial encounter
T528X2D	Toxic effect of other organic solvents, intentional self-harm, subsequent encounter
T528X2S	Toxic effect of other organic solvents, intentional self-harm, sequela
T5292XA	Toxic effect of unspecified organic solvent, intentional self-harm, initial encounter

## Appendix SU-A. ICD-10-CM Codes Relevant to Calculating Suicide Attempts

<b>Code</b>	<b>Poisoning by Toxic Effect</b>
T5292XD	Toxic effect of unspecified organic solvent, intentional self-harm, subsequent encounter
T5292XS	Toxic effect of unspecified organic solvent, intentional self-harm, sequela
T530X2A	Toxic effect of carbon tetrachloride, intentional self-harm, initial encounter
T530X2D	Toxic effect of carbon tetrachloride, intentional self-harm, subsequent encounter
T530X2S	Toxic effect of carbon tetrachloride, intentional self-harm, sequela
T531X2A	Toxic effect of chloroform, intentional self-harm, initial encounter
T531X2D	Toxic effect of chloroform, intentional self-harm, subsequent encounter
T531X2S	Toxic effect of chloroform, intentional self-harm, sequela
T532X2A	Toxic effect of trichloroethylene, intentional self-harm, initial encounter
T532X2D	Toxic effect of trichloroethylene, intentional self-harm, subsequent encounter
T532X2S	Toxic effect of trichloroethylene, intentional self-harm, sequela
T533X2A	Toxic effect of tetrachloroethylene, intentional self-harm, initial encounter
T533X2D	Toxic effect of tetrachloroethylene, intentional self-harm, subsequent encounter
T533X2S	Toxic effect of tetrachloroethylene, intentional self-harm, sequela
T534X2A	Toxic effect of dichloromethane, intentional self-harm, initial encounter
T534X2D	Toxic effect of dichloromethane, intentional self-harm, subsequent encounter
T534X2S	Toxic effect of dichloromethane, intentional self-harm, sequela
T535X2A	Toxic effect of chlorofluorocarbons, intentional self-harm, initial encounter
T535X2D	Toxic effect of chlorofluorocarbons, intentional self-harm, subsequent encounter
T535X2S	Toxic effect of chlorofluorocarbons, intentional self-harm, sequela
T536X2A	Toxic effect of other halogen derivatives of aliphatic hydrocarbons, intentional self-harm, initial encounter
T536X2D	Toxic effect of other halogen derivatives of aliphatic hydrocarbons, intentional self-harm, subsequent encounter

Appendix SU-A. ICD-10-CM Codes Relevant to Calculating Suicide Attempts

<b>Code</b>	<b>Poisoning by Toxic Effect</b>
T536X2S	Toxic effect of other halogen derivatives of aliphatic hydrocarbons, intentional self-harm, sequela
T537X2A	Toxic effect of other halogen derivatives of aromatic hydrocarbons, intentional self-harm, initial encounter
T537X2D	Toxic effect of other halogen derivatives of aromatic hydrocarbons, intentional self-harm, subsequent encounter
T537X2S	Toxic effect of other halogen derivatives of aromatic hydrocarbons, intentional self-harm, sequela
T5392XA	Toxic effect of unspecified halogen derivatives of aliphatic and aromatic hydrocarbons, intentional self-harm, initial encounter
T5392XD	Toxic effect of unspecified halogen derivatives of aliphatic and aromatic hydrocarbons, intentional self-harm, subsequent encounter
T5392XS	Toxic effect of unspecified halogen derivatives of aliphatic and aromatic hydrocarbons, intentional self-harm, sequela
T540X2A	Toxic effect of phenol and phenol homologues, intentional self-harm, initial encounter
T540X2D	Toxic effect of phenol and phenol homologues, intentional self-harm, subsequent encounter
T540X2S	Toxic effect of phenol and phenol homologues, intentional self-harm, sequela
T541X2A	Toxic effect of other corrosive organic compounds, intentional self-harm, initial encounter
T541X2D	Toxic effect of other corrosive organic compounds, intentional self-harm, subsequent encounter
T541X2S	Toxic effect of other corrosive organic compounds, intentional self-harm, sequela
T542X2A	Toxic effect of corrosive acids and acid-like substances, intentional self-harm, initial encounter
T542X2D	Toxic effect of corrosive acids and acid-like substances, intentional self-harm, subsequent encounter

## Appendix SU-A. ICD-10-CM Codes Relevant to Calculating Suicide Attempts

<b>Code</b>	<b>Poisoning by Toxic Effect</b>
T542X2S	Toxic effect of corrosive acids and acid-like substances, intentional self-harm, sequela
T543X2A	Toxic effect of corrosive alkalis and alkali-like substances, intentional self-harm, initial encounter
T543X2D	Toxic effect of corrosive alkalis and alkali-like substances, intentional self-harm, subsequent encounter
T543X2S	Toxic effect of corrosive alkalis and alkali-like substances, intentional self-harm, sequela
T5492XA	Toxic effect of unspecified corrosive substance, intentional self-harm, initial encounter
T5492XD	Toxic effect of unspecified corrosive substance, intentional self-harm, subsequent encounter
T5492XS	Toxic effect of unspecified corrosive substance, intentional self-harm, sequela
T550X2A	Toxic effect of soaps, intentional self-harm, initial encounter
T550X2D	Toxic effect of soaps, intentional self-harm, subsequent encounter
T550X2S	Toxic effect of soaps, intentional self-harm, sequela
T551X2A	Toxic effect of detergents, intentional self-harm, initial encounter
T551X2D	Toxic effect of detergents, intentional self-harm, subsequent encounter
T551X2S	Toxic effect of detergents, intentional self-harm, sequela
T560X2A	Toxic effect of lead and its compounds, intentional self-harm, initial encounter
T560X2D	Toxic effect of lead and its compounds, intentional self-harm, subsequent encounter
T560X2S	Toxic effect of lead and its compounds, intentional self-harm, sequela
T561X2A	Toxic effect of mercury and its compounds, intentional self-harm, initial encounter
T561X2D	Toxic effect of mercury and its compounds, intentional self-harm, subsequent encounter
T561X2S	Toxic effect of mercury and its compounds, intentional self-harm, sequela

Appendix SU-A. ICD-10-CM Codes Relevant to Calculating Suicide Attempts

<b>Code</b>	<b>Poisoning by Toxic Effect</b>
T562X2A	Toxic effect of chromium and its compounds, intentional self-harm, initial encounter
T562X2D	Toxic effect of chromium and its compounds, intentional self-harm, subsequent encounter
T562X2S	Toxic effect of chromium and its compounds, intentional self-harm, sequela
T563X2A	Toxic effect of cadmium and its compounds, intentional self-harm, initial encounter
T563X2D	Toxic effect of cadmium and its compounds, intentional self-harm, subsequent encounter
T563X2S	Toxic effect of cadmium and its compounds, intentional self-harm, sequela
T564X2A	Toxic effect of copper and its compounds, intentional self-harm, initial encounter
T564X2D	Toxic effect of copper and its compounds, intentional self-harm, subsequent encounter
T564X2S	Toxic effect of copper and its compounds, intentional self-harm, sequela
T565X2A	Toxic effect of zinc and its compounds, intentional self-harm, initial encounter
T565X2D	Toxic effect of zinc and its compounds, intentional self-harm, subsequent encounter
T565X2S	Toxic effect of zinc and its compounds, intentional self-harm, sequela
T566X2A	Toxic effect of tin and its compounds, intentional self-harm, initial encounter
T566X2D	Toxic effect of tin and its compounds, intentional self-harm, subsequent encounter
T566X2S	Toxic effect of tin and its compounds, intentional self-harm, sequela
T567X2A	Toxic effect of beryllium and its compounds, intentional self-harm, initial encounter
T567X2D	Toxic effect of beryllium and its compounds, intentional self-harm, subsequent encounter
T567X2S	Toxic effect of beryllium and its compounds, intentional self-harm, sequela
T56812A	Toxic effect of thallium, intentional self-harm, initial encounter



## Appendix SU-A. ICD-10-CM Codes Relevant to Calculating Suicide Attempts

<b>Code</b>	<b>Poisoning by Toxic Effect</b>
T56812D	Toxic effect of thallium, intentional self-harm, subsequent encounter
T56812S	Toxic effect of thallium, intentional self-harm, sequela
T56892A	Toxic effect of other metals, intentional self-harm, initial encounter
T56892D	Toxic effect of other metals, intentional self-harm, subsequent encounter
T56892S	Toxic effect of other metals, intentional self-harm, sequela
T5692XA	Toxic effect of unspecified metal, intentional self-harm, initial encounter
T5692XD	Toxic effect of unspecified metal, intentional self-harm, subsequent encounter
T5692XS	Toxic effect of unspecified metal, intentional self-harm, sequela
T570X2A	Toxic effect of arsenic and its compounds, intentional self-harm, initial encounter
T570X2D	Toxic effect of arsenic and its compounds, intentional self-harm, subsequent encounter
T570X2S	Toxic effect of arsenic and its compounds, intentional self-harm, sequela
T571X2A	Toxic effect of phosphorus and its compounds, intentional self-harm, initial encounter
T571X2D	Toxic effect of phosphorus and its compounds, intentional self-harm, subsequent encounter
T571X2S	Toxic effect of phosphorus and its compounds, intentional self-harm, sequela
T572X2A	Toxic effect of manganese and its compounds, intentional self-harm, initial encounter
T572X2D	Toxic effect of manganese and its compounds, intentional self-harm, subsequent encounter
T572X2S	Toxic effect of manganese and its compounds, intentional self-harm, sequela
T573X2A	Toxic effect of hydrogen cyanide, intentional self-harm, initial encounter
T573X2D	Toxic effect of hydrogen cyanide, intentional self-harm, subsequent encounter
T573X2S	Toxic effect of hydrogen cyanide, intentional self-harm, sequela
T578X2A	Toxic effect of other specified inorganic substances, intentional self-harm, initial encounter

Appendix SU-A. ICD-10-CM Codes Relevant to Calculating Suicide Attempts

<b>Code</b>	<b>Poisoning by Toxic Effect</b>
T578X2D	Toxic effect of other specified inorganic substances, intentional self-harm, subsequent encounter
T578X2S	Toxic effect of other specified inorganic substances, intentional self-harm, sequela
T5792XA	Toxic effect of unspecified inorganic substance, intentional self-harm, initial encounter
T5792XD	Toxic effect of unspecified inorganic substance, intentional self-harm, subsequent encounter
T5792XS	Toxic effect of unspecified inorganic substance, intentional self-harm, sequela
T5802XA	Toxic effect of carbon monoxide from motor vehicle exhaust, intentional self-harm, initial encounter
T5802XD	Toxic effect of carbon monoxide from motor vehicle exhaust, intentional self-harm, subsequent encounter
T5802XS	Toxic effect of carbon monoxide from motor vehicle exhaust, intentional self-harm, sequela
T5812XA	Toxic effect of carbon monoxide from utility gas, intentional self-harm, initial encounter
T5812XD	Toxic effect of carbon monoxide from utility gas, intentional self-harm, subsequent encounter
T5812XS	Toxic effect of carbon monoxide from utility gas, intentional self-harm, sequela
T582X2A	Toxic effect of carbon monoxide from incomplete combustion of other domestic fuels, intentional self-harm, initial encounter
T582X2D	Toxic effect of carbon monoxide from incomplete combustion of other domestic fuels, intentional self-harm, subsequent encounter
T582X2S	Toxic effect of carbon monoxide from incomplete combustion of other domestic fuels, intentional self-harm, sequela
T588X2A	Toxic effect of carbon monoxide from other source, intentional self-harm, initial encounter
T588X2D	Toxic effect of carbon monoxide from other source, intentional self-harm, subsequent encounter

Appendix SU-A. ICD-10-CM Codes Relevant to Calculating Suicide Attempts

<b>Code</b>	<b>Poisoning by Toxic Effect</b>
T588X2S	Toxic effect of carbon monoxide from other source, intentional self-harm, sequela
T5892XA	Toxic effect of carbon monoxide from unspecified source, intentional self-harm, initial encounter
T5892XD	Toxic effect of carbon monoxide from unspecified source, intentional self-harm, subsequent encounter
T5892XS	Toxic effect of carbon monoxide from unspecified source, intentional self-harm, sequela
T590X2A	Toxic effect of nitrogen oxides, intentional self-harm, initial encounter
T590X2D	Toxic effect of nitrogen oxides, intentional self-harm, subsequent encounter
T590X2S	Toxic effect of nitrogen oxides, intentional self-harm, sequela
T591X2A	Toxic effect of sulfur dioxide, intentional self-harm, initial encounter
T591X2D	Toxic effect of sulfur dioxide, intentional self-harm, subsequent encounter
T591X2S	Toxic effect of sulfur dioxide, intentional self-harm, sequela
T592X2A	Toxic effect of formaldehyde, intentional self-harm, initial encounter
T592X2D	Toxic effect of formaldehyde, intentional self-harm, subsequent encounter
T592X2S	Toxic effect of formaldehyde, intentional self-harm, sequela
T593X2A	Toxic effect of lacrimogenic gas, intentional self-harm, initial encounter
T593X2D	Toxic effect of lacrimogenic gas, intentional self-harm, subsequent encounter
T593X2S	Toxic effect of lacrimogenic gas, intentional self-harm, sequela
T594X2A	Toxic effect of chlorine gas, intentional self-harm, initial encounter
T594X2D	Toxic effect of chlorine gas, intentional self-harm, subsequent encounter
T594X2S	Toxic effect of chlorine gas, intentional self-harm, sequela
T595X2A	Toxic effect of fluorine gas and hydrogen fluoride, intentional self-harm, initial encounter
T595X2D	Toxic effect of fluorine gas and hydrogen fluoride, intentional self-harm, subsequent encounter

Appendix SU-A. ICD-10-CM Codes Relevant to Calculating Suicide Attempts

<b>Code</b>	<b>Poisoning by Toxic Effect</b>
T595X2S	Toxic effect of fluorine gas and hydrogen fluoride, intentional self-harm, sequela
T596X2A	Toxic effect of hydrogen sulfide, intentional self-harm, initial encounter
T596X2D	Toxic effect of hydrogen sulfide, intentional self-harm, subsequent encounter
T596X2S	Toxic effect of hydrogen sulfide, intentional self-harm, sequela
T597X2A	Toxic effect of carbon dioxide, intentional self-harm, initial encounter
T597X2D	Toxic effect of carbon dioxide, intentional self-harm, subsequent encounter
T597X2S	Toxic effect of carbon dioxide, intentional self-harm, sequela
T59812A	Toxic effect of smoke, intentional self-harm, initial encounter
T59812D	Toxic effect of smoke, intentional self-harm, subsequent encounter
T59812S	Toxic effect of smoke, intentional self-harm, sequela
T59892A	Toxic effect of other specified gases, fumes and vapors, intentional self-harm, initial encounter
T59892D	Toxic effect of other specified gases, fumes and vapors, intentional self-harm, subsequent encounter
T59892S	Toxic effect of other specified gases, fumes and vapors, intentional self-harm, sequela
T5992XA	Toxic effect of unspecified gases, fumes and vapors, intentional self-harm, initial encounter
T5992XD	Toxic effect of unspecified gases, fumes and vapors, intentional self-harm, subsequent encounter
T5992XS	Toxic effect of unspecified gases, fumes and vapors, intentional self-harm, sequela
T600X2A	Toxic effect of organophosphate and carbamate insecticides, intentional self-harm, initial encounter
T600X2D	Toxic effect of organophosphate and carbamate insecticides, intentional self-harm, subsequent encounter
T600X2S	Toxic effect of organophosphate and carbamate insecticides, intentional self-harm, sequela

## Appendix SU-A. ICD-10-CM Codes Relevant to Calculating Suicide Attempts

<b>Code</b>	<b>Poisoning by Toxic Effect</b>
T601X2A	Toxic effect of halogenated insecticides, intentional self-harm, initial encounter
T601X2D	Toxic effect of halogenated insecticides, intentional self-harm, subsequent encounter
T601X2S	Toxic effect of halogenated insecticides, intentional self-harm, sequela
T601X3A	Toxic effect of halogenated insecticides, assault, initial encounter
T602X2A	Toxic effect of other insecticides, intentional self-harm, initial encounter
T602X2D	Toxic effect of other insecticides, intentional self-harm, subsequent encounter
T602X2S	Toxic effect of other insecticides, intentional self-harm, sequela
T603X2A	Toxic effect of herbicides and fungicides, intentional self-harm, initial encounter
T603X2D	Toxic effect of herbicides and fungicides, intentional self-harm, subsequent encounter
T603X2S	Toxic effect of herbicides and fungicides, intentional self-harm, sequela
T604X2A	Toxic effect of rodenticides, intentional self-harm, initial encounter
T604X2D	Toxic effect of rodenticides, intentional self-harm, subsequent encounter
T604X2S	Toxic effect of rodenticides, intentional self-harm, sequela
T608X2A	Toxic effect of other pesticides, intentional self-harm, initial encounter
T608X2D	Toxic effect of other pesticides, intentional self-harm, subsequent encounter
T608X2S	Toxic effect of other pesticides, intentional self-harm, sequela
T6092XA	Toxic effect of unspecified pesticide, intentional self-harm, initial encounter
T6092XD	Toxic effect of unspecified pesticide, intentional self-harm, subsequent encounter
T6092XS	Toxic effect of unspecified pesticide, intentional self-harm, sequela
T6102XA	Ciguatera fish poisoning, intentional self-harm, initial encounter
T6102XD	Ciguatera fish poisoning, intentional self-harm, subsequent encounter
T6102XS	Ciguatera fish poisoning, intentional self-harm, sequela
T6112XA	Scombroid fish poisoning, intentional self-harm, initial encounter

Appendix SU-A. ICD-10-CM Codes Relevant to Calculating Suicide Attempts

<b>Code</b>	<b>Poisoning by Toxic Effect</b>
T6112XD	Scombroid fish poisoning, intentional self-harm, subsequent encounter
T6112XS	Scombroid fish poisoning, intentional self-harm, sequela
T61772A	Other fish poisoning, intentional self-harm, initial encounter
T61772D	Other fish poisoning, intentional self-harm, subsequent encounter
T61772S	Other fish poisoning, intentional self-harm, sequela
T61782A	Other shellfish poisoning, intentional self-harm, initial encounter
T61782D	Other shellfish poisoning, intentional self-harm, subsequent encounter
T61782S	Other shellfish poisoning, intentional self-harm, sequela
T618X2A	Toxic effect of other seafood, intentional self-harm, initial encounter
T618X2D	Toxic effect of other seafood, intentional self-harm, subsequent encounter
T618X2S	Toxic effect of other seafood, intentional self-harm, sequela
T6192XA	Toxic effect of unspecified seafood, intentional self-harm, initial encounter
T6192XD	Toxic effect of unspecified seafood, intentional self-harm, subsequent encounter
T6192XS	Toxic effect of unspecified seafood, intentional self-harm, sequela
T620X2A	Toxic effect of ingested mushrooms, intentional self-harm, initial encounter
T620X2D	Toxic effect of ingested mushrooms, intentional self-harm, subsequent encounter
T620X2S	Toxic effect of ingested mushrooms, intentional self-harm, sequela
T621X2A	Toxic effect of ingested berries, intentional self-harm, initial encounter
T621X2D	Toxic effect of ingested berries, intentional self-harm, subsequent encounter
T621X2S	Toxic effect of ingested berries, intentional self-harm, sequela
T622X2A	Toxic effect of other ingested (parts of) plant(s), intentional self-harm, initial encounter
T622X2D	Toxic effect of other ingested (parts of) plant(s), intentional self-harm, subsequent encounter
T622X2S	Toxic effect of other ingested (parts of) plant(s), intentional self-harm, sequela

## Appendix SU-A. ICD-10-CM Codes Relevant to Calculating Suicide Attempts

<b>Code</b>	<b>Poisoning by Toxic Effect</b>
T628X2A	Toxic effect of other specified noxious substances eaten as food, intentional self-harm, initial encounter
T628X2D	Toxic effect of other specified noxious substances eaten as food, intentional self-harm, subsequent encounter
T628X2S	Toxic effect of other specified noxious substances eaten as food, intentional self-harm, sequela
T6292XA	Toxic effect of unspecified noxious substance eaten as food, intentional self-harm, initial encounter
T6292XD	Toxic effect of unspecified noxious substance eaten as food, intentional self-harm, subsequent encounter
T6292XS	Toxic effect of unspecified noxious substance eaten as food, intentional self-harm, sequela
T63002A	Toxic effect of unspecified snake venom, intentional self-harm, initial encounter
T63002D	Toxic effect of unspecified snake venom, intentional self-harm, subsequent encounter
T63002S	Toxic effect of unspecified snake venom, intentional self-harm, sequela
T63012A	Toxic effect of rattlesnake venom, intentional self-harm, initial encounter
T63012D	Toxic effect of rattlesnake venom, intentional self-harm, subsequent encounter
T63012S	Toxic effect of rattlesnake venom, intentional self-harm, sequela
T63022A	Toxic effect of coral snake venom, intentional self-harm, initial encounter
T63022D	Toxic effect of coral snake venom, intentional self-harm, subsequent encounter
T63022S	Toxic effect of coral snake venom, intentional self-harm, sequela
T63032A	Toxic effect of taipan venom, intentional self-harm, initial encounter
T63032D	Toxic effect of taipan venom, intentional self-harm, subsequent encounter
T63032S	Toxic effect of taipan venom, intentional self-harm, sequela
T63042A	Toxic effect of cobra venom, intentional self-harm, initial encounter
T63042D	Toxic effect of cobra venom, intentional self-harm, subsequent encounter
T63042S	Toxic effect of cobra venom, intentional self-harm, sequela

Appendix SU-A. ICD-10-CM Codes Relevant to Calculating Suicide Attempts

<b>Code</b>	<b>Poisoning by Toxic Effect</b>
T63062A	Toxic effect of venom of other North and South American snake, intentional self-harm, initial encounter
T63062D	Toxic effect of venom of other North and South American snake, intentional self-harm, subsequent encounter
T63062S	Toxic effect of venom of other North and South American snake, intentional self-harm, sequela
T63072A	Toxic effect of venom of other Australian snake, intentional self-harm, initial encounter
T63072D	Toxic effect of venom of other Australian snake, intentional self-harm, subsequent encounter
T63072S	Toxic effect of venom of other Australian snake, intentional self-harm, sequela
T63082A	Toxic effect of venom of other African and Asian snake, intentional self-harm, initial encounter
T63082D	Toxic effect of venom of other African and Asian snake, intentional self-harm, subsequent encounter
T63082S	Toxic effect of venom of other African and Asian snake, intentional self-harm, sequela
T63092A	Toxic effect of venom of other snake, intentional self-harm, initial encounter
T63092D	Toxic effect of venom of other snake, intentional self-harm, subsequent encounter
T63092S	Toxic effect of venom of other snake, intentional self-harm, sequela
T63112A	Toxic effect of venom of gila monster, intentional self-harm, initial encounter
T63112D	Toxic effect of venom of gila monster, intentional self-harm, subsequent encounter
T63112S	Toxic effect of venom of gila monster, intentional self-harm, sequela
T63122A	Toxic effect of venom of other venomous lizard, intentional self-harm, initial encounter
T63122D	Toxic effect of venom of other venomous lizard, intentional self-harm, subsequent encounter



## Appendix SU-A. ICD-10-CM Codes Relevant to Calculating Suicide Attempts

<b>Code</b>	<b>Poisoning by Toxic Effect</b>
T63122S	Toxic effect of venom of other venomous lizard, intentional self-harm, sequela
T63192A	Toxic effect of venom of other reptiles, intentional self-harm, initial encounter
T63192D	Toxic effect of venom of other reptiles, intentional self-harm, subsequent encounter
T63192S	Toxic effect of venom of other reptiles, intentional self-harm, sequela
T632X2A	Toxic effect of venom of scorpion, intentional self-harm, initial encounter
T632X2D	Toxic effect of venom of scorpion, intentional self-harm, subsequent encounter
T632X2S	Toxic effect of venom of scorpion, intentional self-harm, sequela
T63302A	Toxic effect of unspecified spider venom, intentional self-harm, initial encounter
T63302D	Toxic effect of unspecified spider venom, intentional self-harm, subsequent encounter
T63302S	Toxic effect of unspecified spider venom, intentional self-harm, sequela
T63312A	Toxic effect of venom of black widow spider, intentional self-harm, initial encounter
T63312D	Toxic effect of venom of black widow spider, intentional self-harm, subsequent encounter
T63312S	Toxic effect of venom of black widow spider, intentional self-harm, sequela
T63322A	Toxic effect of venom of tarantula, intentional self-harm, initial encounter
T63322D	Toxic effect of venom of tarantula, intentional self-harm, subsequent encounter
T63322S	Toxic effect of venom of tarantula, intentional self-harm, sequela
T63332A	Toxic effect of venom of brown recluse spider, intentional self-harm, initial encounter
T63332D	Toxic effect of venom of brown recluse spider, intentional self-harm, subsequent encounter
T63332S	Toxic effect of venom of brown recluse spider, intentional self-harm, sequela
T63392A	Toxic effect of venom of other spider, intentional self-harm, initial encounter
T63392D	Toxic effect of venom of other spider, intentional self-harm, subsequent encounter

Appendix SU-A. ICD-10-CM Codes Relevant to Calculating Suicide Attempts

<b>Code</b>	<b>Poisoning by Toxic Effect</b>
T63392S	Toxic effect of venom of other spider, intentional self-harm, sequela
T63412A	Toxic effect of venom of centipedes and venomous millipedes, intentional self-harm, initial encounter
T63412D	Toxic effect of venom of centipedes and venomous millipedes, intentional self-harm, subsequent encounter
T63412S	Toxic effect of venom of centipedes and venomous millipedes, intentional self-harm, sequela
T63422A	Toxic effect of venom of ants, intentional self-harm, initial encounter
T63422D	Toxic effect of venom of ants, intentional self-harm, subsequent encounter
T63422S	Toxic effect of venom of ants, intentional self-harm, sequela
T63432A	Toxic effect of venom of caterpillars, intentional self-harm, initial encounter
T63432D	Toxic effect of venom of caterpillars, intentional self-harm, subsequent encounter
T63432S	Toxic effect of venom of caterpillars, intentional self-harm, sequela
T63442A	Toxic effect of venom of bees, intentional self-harm, initial encounter
T63442D	Toxic effect of venom of bees, intentional self-harm, subsequent encounter
T63442S	Toxic effect of venom of bees, intentional self-harm, sequela
T63452A	Toxic effect of venom of hornets, intentional self-harm, initial encounter
T63452D	Toxic effect of venom of hornets, intentional self-harm, subsequent encounter
T63452S	Toxic effect of venom of hornets, intentional self-harm, sequela
T63462A	Toxic effect of venom of wasps, intentional self-harm, initial encounter
T63462D	Toxic effect of venom of wasps, intentional self-harm, subsequent encounter
T63462S	Toxic effect of venom of wasps, intentional self-harm, sequela
T63482A	Toxic effect of venom of other arthropod, intentional self-harm, initial encounter
T63482D	Toxic effect of venom of other arthropod, intentional self-harm, subsequent encounter
T63482S	Toxic effect of venom of other arthropod, intentional self-harm, sequela

Appendix SU-A. ICD-10-CM Codes Relevant to Calculating Suicide Attempts

<b>Code</b>	<b>Poisoning by Toxic Effect</b>
T63512A	Toxic effect of contact with stingray, intentional self-harm, initial encounter
T63512D	Toxic effect of contact with stingray, intentional self-harm, subsequent encounter
T63512S	Toxic effect of contact with stingray, intentional self-harm, sequela
T63592A	Toxic effect of contact with other venomous fish, intentional self-harm, initial encounter
T63592D	Toxic effect of contact with other venomous fish, intentional self-harm, subsequent encounter
T63592S	Toxic effect of contact with other venomous fish, intentional self-harm, sequela
T63612A	Toxic effect of contact with Portugese Man-o-war, intentional self-harm, initial encounter
T63612D	Toxic effect of contact with Portugese Man-o-war, intentional self-harm, subsequent encounter
T63612S	Toxic effect of contact with Portugese Man-o-war, intentional self-harm, sequela
T63622A	Toxic effect of contact with other jellyfish, intentional self-harm, initial encounter
T63622D	Toxic effect of contact with other jellyfish, intentional self-harm, subsequent encounter
T63622S	Toxic effect of contact with other jellyfish, intentional self-harm, sequela
T63632A	Toxic effect of contact with sea anemone, intentional self-harm, initial encounter
T63632D	Toxic effect of contact with sea anemone, intentional self-harm, subsequent encounter
T63632S	Toxic effect of contact with sea anemone, intentional self-harm, sequela
T63692A	Toxic effect of contact with other venomous marine animals, intentional self-harm, initial encounter
T63692D	Toxic effect of contact with other venomous marine animals, intentional self-harm, subsequent encounter
T63692S	Toxic effect of contact with other venomous marine animals, intentional self-harm, sequela

Appendix SU-A. ICD-10-CM Codes Relevant to Calculating Suicide Attempts

<b>Code</b>	<b>Poisoning by Toxic Effect</b>
T63712A	Toxic effect of contact with venomous marine plant, intentional self-harm, initial encounter
T63712D	Toxic effect of contact with venomous marine plant, intentional self-harm, subsequent encounter
T63712S	Toxic effect of contact with venomous marine plant, intentional self-harm, sequela
T63792A	Toxic effect of contact with other venomous plant, intentional self-harm, initial encounter
T63792D	Toxic effect of contact with other venomous plant, intentional self-harm, subsequent encounter
T63792S	Toxic effect of contact with other venomous plant, intentional self-harm, sequela
T63812A	Toxic effect of contact with venomous frog, intentional self-harm, initial encounter
T63812D	Toxic effect of contact with venomous frog, intentional self-harm, subsequent encounter
T63812S	Toxic effect of contact with venomous frog, intentional self-harm, sequela
T63822A	Toxic effect of contact with venomous toad, intentional self-harm, initial encounter
T63822D	Toxic effect of contact with venomous toad, intentional self-harm, subsequent encounter
T63822S	Toxic effect of contact with venomous toad, intentional self-harm, sequela
T63832A	Toxic effect of contact with other venomous amphibian, intentional self-harm, initial encounter
T63832D	Toxic effect of contact with other venomous amphibian, intentional self-harm, subsequent encounter
T63832S	Toxic effect of contact with other venomous amphibian, intentional self-harm, sequela
T63892A	Toxic effect of contact with other venomous animals, intentional self-harm, initial encounter

Appendix SU-A. ICD-10-CM Codes Relevant to Calculating Suicide Attempts

<b>Code</b>	<b>Poisoning by Toxic Effect</b>
T63892D	Toxic effect of contact with other venomous animals, intentional self-harm, subsequent encounter
T63892S	Toxic effect of contact with other venomous animals, intentional self-harm, sequela
T6392XA	Toxic effect of contact with unspecified venomous animal, intentional self-harm, initial encounter
T6392XD	Toxic effect of contact with unspecified venomous animal, intentional self-harm, subsequent encounter
T6392XS	Toxic effect of contact with unspecified venomous animal, intentional self-harm, sequela
T6402XA	Toxic effect of aflatoxin, intentional self-harm, initial encounter
T6402XD	Toxic effect of aflatoxin, intentional self-harm, subsequent encounter
T6402XS	Toxic effect of aflatoxin, intentional self-harm, sequela
T6482XA	Toxic effect of other mycotoxin food contaminants, intentional self-harm, initial encounter
T6482XD	Toxic effect of other mycotoxin food contaminants, intentional self-harm, subsequent encounter
T6482XS	Toxic effect of other mycotoxin food contaminants, intentional self-harm, sequela
T650X2A	Toxic effect of cyanides, intentional self-harm, initial encounter
T650X2D	Toxic effect of cyanides, intentional self-harm, subsequent encounter
T650X2S	Toxic effect of cyanides, intentional self-harm, sequela
T651X2A	Toxic effect of strychnine and its salts, intentional self-harm, initial encounter
T651X2D	Toxic effect of strychnine and its salts, intentional self-harm, subsequent encounter
T651X2S	Toxic effect of strychnine and its salts, intentional self-harm, sequela
T65212A	Toxic effect of chewing tobacco, intentional self-harm, initial encounter
T65212D	Toxic effect of chewing tobacco, intentional self-harm, subsequent encounter

## Appendix SU-A. ICD-10-CM Codes Relevant to Calculating Suicide Attempts

<b>Code</b>	<b>Poisoning by Toxic Effect</b>
T65212S	Toxic effect of chewing tobacco, intentional self-harm, sequela
T65222A	Toxic effect of tobacco cigarettes, intentional self-harm, initial encounter
T65222D	Toxic effect of tobacco cigarettes, intentional self-harm, subsequent encounter
T65222S	Toxic effect of tobacco cigarettes, intentional self-harm, sequela
T65292A	Toxic effect of other tobacco and nicotine, intentional self-harm, initial encounter
T65292D	Toxic effect of other tobacco and nicotine, intentional self-harm, subsequent encounter
T65292S	Toxic effect of other tobacco and nicotine, intentional self-harm, sequela
T653X2A	Toxic effect of nitroderivatives and aminoderivatives of benzene and its homologues, intentional self-harm, initial encounter
T653X2D	Toxic effect of nitroderivatives and aminoderivatives of benzene and its homologues, intentional self-harm, subsequent encounter
T653X2S	Toxic effect of nitroderivatives and aminoderivatives of benzene and its homologues, intentional self-harm, sequela
T654X2A	Toxic effect of carbon disulfide, intentional self-harm, initial encounter
T654X2D	Toxic effect of carbon disulfide, intentional self-harm, subsequent encounter
T654X2S	Toxic effect of carbon disulfide, intentional self-harm, sequela
T655X2A	Toxic effect of nitroglycerin and other nitric acids and esters, intentional self-harm, initial encounter
T655X2D	Toxic effect of nitroglycerin and other nitric acids and esters, intentional self-harm, subsequent encounter
T655X2S	Toxic effect of nitroglycerin and other nitric acids and esters, intentional self-harm, sequela
T656X2A	Toxic effect of paints and dyes, not elsewhere classified, intentional self-harm, initial encounter
T656X2D	Toxic effect of paints and dyes, not elsewhere classified, intentional self-harm, subsequent encounter

Appendix SU-A. ICD-10-CM Codes Relevant to Calculating Suicide Attempts

<b>Code</b>	<b>Poisoning by Toxic Effect</b>
T656X2S	Toxic effect of paints and dyes, not elsewhere classified, intentional self-harm, sequela
T65812A	Toxic effect of latex, intentional self-harm, initial encounter
T65812D	Toxic effect of latex, intentional self-harm, subsequent encounter
T65812S	Toxic effect of latex, intentional self-harm, sequela
T65822A	Toxic effect of harmful algae and algae toxins, intentional self-harm, initial encounter
T65822D	Toxic effect of harmful algae and algae toxins, intentional self-harm, subsequent encounter
T65822S	Toxic effect of harmful algae and algae toxins, intentional self-harm, sequela
T65832A	Toxic effect of fiberglass, intentional self-harm, initial encounter
T65832D	Toxic effect of fiberglass, intentional self-harm, subsequent encounter
T65832S	Toxic effect of fiberglass, intentional self-harm, sequela
T65892A	Toxic effect of other specified substances, intentional self-harm, initial encounter
T65892D	Toxic effect of other specified substances, intentional self-harm, subsequent encounter
T65892S	Toxic effect of other specified substances, intentional self-harm, sequela
T6592XA	Toxic effect of unspecified substance, intentional self-harm, initial encounter
T6592XD	Toxic effect of unspecified substance, intentional self-harm, subsequent encounter
T6592XS	Toxic effect of unspecified substance, intentional self-harm, sequela

***Intentional Self-Inflicted Injury.*** ICD-10-CM codes related to self-inflicted injuries that do not involve poisoning are coded to the specific injury followed by an external cause of injury code (if reported) (codes X71-X83). Those codes are listed in Table 3 below.

**Table 3. Suicide Attempt by Self-Inflicted Injury Codes**

<b>Code</b>	<b>Self-Inflicted Injury</b>
X710XXA	Intentional self-harm by drowning and submersion while in bathtub, initial encounter

Appendix SU-A. ICD-10-CM Codes Relevant to Calculating Suicide Attempts

<b>Code</b>	<b>Self-Inflicted Injury</b>
X710XXD	Intentional self-harm by drowning and submersion while in bathtub, subsequent encounter
X710XXS	Intentional self-harm by drowning and submersion while in bathtub, sequela
X711XXA	Intentional self-harm by drowning and submersion while in swimming pool, initial encounter
X711XXD	Intentional self-harm by drowning and submersion while in swimming pool, subsequent encounter
X711XXS	Intentional self-harm by drowning and submersion while in swimming pool, sequela
X712XXA	Intentional self-harm by drowning and submersion after jump into swimming pool, initial encounter
X712XXD	Intentional self-harm by drowning and submersion after jump into swimming pool, subsequent encounter
X712XXS	Intentional self-harm by drowning and submersion after jump into swimming pool, sequela
X713XXA	Intentional self-harm by drowning and submersion in natural water, initial encounter
X713XXD	Intentional self-harm by drowning and submersion in natural water, subsequent encounter
X713XXS	Intentional self-harm by drowning and submersion in natural water, sequela
X718XXA	Other intentional self-harm by drowning and submersion, initial encounter
X718XXD	Other intentional self-harm by drowning and submersion, subsequent encounter
X718XXS	Other intentional self-harm by drowning and submersion, sequela
X719XXA	Intentional self-harm by drowning and submersion, unspecified, initial encounter
X719XXD	Intentional self-harm by drowning and submersion, unspecified, subsequent encounter
X719XXS	Intentional self-harm by drowning and submersion, unspecified, sequela
X72XXXA	Intentional self-harm by handgun discharge, initial encounter
X72XXXD	Intentional self-harm by handgun discharge, subsequent encounter



Appendix SU-A. ICD-10-CM Codes Relevant to Calculating Suicide Attempts

<b>Code</b>	<b>Self-Inflicted Injury</b>
X72XXXS	Intentional self-harm by handgun discharge, sequela
X730XXA	Intentional self-harm by shotgun discharge, initial encounter
X730XXD	Intentional self-harm by shotgun discharge, subsequent encounter
X730XXS	Intentional self-harm by shotgun discharge, sequela
X731XXA	Intentional self-harm by hunting rifle discharge, initial encounter
X731XXD	Intentional self-harm by hunting rifle discharge, subsequent encounter
X731XXS	Intentional self-harm by hunting rifle discharge, sequela
X732XXA	Intentional self-harm by machine gun discharge, initial encounter
X732XXD	Intentional self-harm by machine gun discharge, subsequent encounter
X732XXS	Intentional self-harm by machine gun discharge, sequela
X738XXA	Intentional self-harm by other larger firearm discharge, initial encounter
X738XXD	Intentional self-harm by other larger firearm discharge, subsequent encounter
X738XXS	Intentional self-harm by other larger firearm discharge, sequela
X739XXA	Intentional self-harm by unspecified larger firearm discharge, initial encounter
X739XXD	Intentional self-harm by unspecified larger firearm discharge, subsequent encounter
X739XXS	Intentional self-harm by unspecified larger firearm discharge, sequela
X7401XA	Intentional self-harm by airgun, initial encounter
X7401XD	Intentional self-harm by airgun, subsequent encounter
X7401XS	Intentional self-harm by airgun, sequela
X7402XA	Intentional self-harm by paintball gun, initial encounter
X7402XD	Intentional self-harm by paintball gun, subsequent encounter
X7402XS	Intentional self-harm by paintball gun, sequela
X7409XA	Intentional self-harm by other gas, air or spring-operated gun, initial encounter
X7409XD	Intentional self-harm by other gas, air or spring-operated gun, subsequent encounter

Appendix SU-A. ICD-10-CM Codes Relevant to Calculating Suicide Attempts

<b>Code</b>	<b>Self-Inflicted Injury</b>
X7409XS	Intentional self-harm by other gas, air or spring-operated gun, sequela
X748XXA	Intentional self-harm by other firearm discharge, initial encounter
X748XXD	Intentional self-harm by other firearm discharge, subsequent encounter
X748XXS	Intentional self-harm by other firearm discharge, sequela
X749XXA	Intentional self-harm by unspecified firearm discharge, initial encounter
X749XXD	Intentional self-harm by unspecified firearm discharge, subsequent encounter
X749XXS	Intentional self-harm by unspecified firearm discharge, sequela
X75XXXA	Intentional self-harm by explosive material, initial encounter
X75XXXD	Intentional self-harm by explosive material, subsequent encounter
X75XXXS	Intentional self-harm by explosive material, sequela
X76XXXA	Intentional self-harm by smoke, fire and flames, initial encounter
X76XXXD	Intentional self-harm by smoke, fire and flames, subsequent encounter
X76XXXS	Intentional self-harm by smoke, fire and flames, sequela
X770XXA	Intentional self-harm by steam or hot vapors, initial encounter
X770XXD	Intentional self-harm by steam or hot vapors, subsequent encounter
X770XXS	Intentional self-harm by steam or hot vapors, sequela
X771XXA	Intentional self-harm by hot tap water, initial encounter
X771XXD	Intentional self-harm by hot tap water, subsequent encounter
X771XXS	Intentional self-harm by hot tap water, sequela
X772XXA	Intentional self-harm by other hot fluids, initial encounter
X772XXD	Intentional self-harm by other hot fluids, subsequent encounter
X772XXS	Intentional self-harm by other hot fluids, sequela
X773XXA	Intentional self-harm by hot household appliances, initial encounter
X773XXD	Intentional self-harm by hot household appliances, subsequent encounter
X773XXS	Intentional self-harm by hot household appliances, sequela

Appendix SU-A. ICD-10-CM Codes Relevant to Calculating Suicide Attempts

<b>Code</b>	<b>Self-Inflicted Injury</b>
X778XXA	Intentional self-harm by other hot objects, initial encounter
X778XXD	Intentional self-harm by other hot objects, subsequent encounter
X778XXS	Intentional self-harm by other hot objects, sequela
X779XXA	Intentional self-harm by unspecified hot objects, initial encounter
X779XXD	Intentional self-harm by unspecified hot objects, subsequent encounter
X779XXS	Intentional self-harm by unspecified hot objects, sequela
X780XXA	Intentional self-harm by sharp glass, initial encounter
X780XXD	Intentional self-harm by sharp glass, subsequent encounter
X780XXS	Intentional self-harm by sharp glass, sequela
X781XXA	Intentional self-harm by knife, initial encounter
X781XXD	Intentional self-harm by knife, subsequent encounter
X781XXS	Intentional self-harm by knife, sequela
X782XXA	Intentional self-harm by sword or dagger, initial encounter
X782XXD	Intentional self-harm by sword or dagger, subsequent encounter
X782XXS	Intentional self-harm by sword or dagger, sequela
X788XXA	Intentional self-harm by other sharp object, initial encounter
X788XXD	Intentional self-harm by other sharp object, subsequent encounter
X788XXS	Intentional self-harm by other sharp object, sequela
X789XXA	Intentional self-harm by unspecified sharp object, initial encounter
X789XXD	Intentional self-harm by unspecified sharp object, subsequent encounter
X789XXS	Intentional self-harm by unspecified sharp object, sequela
X79XXXA	Intentional self-harm by blunt object, initial encounter
X79XXXD	Intentional self-harm by blunt object, subsequent encounter
X79XXXS	Intentional self-harm by blunt object, sequela
X80XXXA	Intentional self-harm by jumping from a high place, initial encounter

Appendix SU-A. ICD-10-CM Codes Relevant to Calculating Suicide Attempts

<b>Code</b>	<b>Self-Inflicted Injury</b>
X80XXXD	Intentional self-harm by jumping from a high place, subsequent encounter
X80XXXS	Intentional self-harm by jumping from a high place, sequela
X810XXA	Intentional self-harm by jumping or lying in front of motor vehicle, initial encounter
X810XXD	Intentional self-harm by jumping or lying in front of motor vehicle, subsequent encounter
X810XXS	Intentional self-harm by jumping or lying in front of motor vehicle, sequela
X811XXA	Intentional self-harm by jumping or lying in front of (subway) train, initial encounter
X811XXD	Intentional self-harm by jumping or lying in front of (subway) train, subsequent encounter
X811XXS	Intentional self-harm by jumping or lying in front of (subway) train, sequela
X818XXA	Intentional self-harm by jumping or lying in front of other moving object, initial encounter
X818XXD	Intentional self-harm by jumping or lying in front of other moving object, subsequent encounter
X818XXS	Intentional self-harm by jumping or lying in front of other moving object, sequela
X820XXA	Intentional collision of motor vehicle with other motor vehicle, initial encounter
X820XXD	Intentional collision of motor vehicle with other motor vehicle, subsequent encounter
X820XXS	Intentional collision of motor vehicle with other motor vehicle, sequela
X821XXA	Intentional collision of motor vehicle with train, initial encounter
X821XXD	Intentional collision of motor vehicle with train, subsequent encounter
X821XXS	Intentional collision of motor vehicle with train, sequela
X822XXA	Intentional collision of motor vehicle with tree, initial encounter
X822XXD	Intentional collision of motor vehicle with tree, subsequent encounter
X822XXS	Intentional collision of motor vehicle with tree, sequela

Appendix SU-A. ICD-10-CM Codes Relevant to Calculating Suicide Attempts

<b>Code</b>	<b>Self-Inflicted Injury</b>
X828XXA	Other intentional self-harm by crashing of motor vehicle, initial encounter
X828XXD	Other intentional self-harm by crashing of motor vehicle, subsequent encounter
X828XXS	Other intentional self-harm by crashing of motor vehicle, sequela
X830XXA	Intentional self-harm by crashing of aircraft, initial encounter
X830XXD	Intentional self-harm by crashing of aircraft, subsequent encounter
X830XXS	Intentional self-harm by crashing of aircraft, sequela
X831XXA	Intentional self-harm by electrocution, initial encounter
X831XXD	Intentional self-harm by electrocution, subsequent encounter
X831XXS	Intentional self-harm by electrocution, sequela
X832XXA	Intentional self-harm by exposure to extremes of cold, initial encounter
X832XXD	Intentional self-harm by exposure to extremes of cold, subsequent encounter
X832XXS	Intentional self-harm by exposure to extremes of cold, sequela
X838XXA	Intentional self-harm by other specified means, initial encounter
X838XXD	Intentional self-harm by other specified means, subsequent encounter
X838XXS	Intentional self-harm by other specified means, sequela

***Suicidal Ideation and Suicide Attempt Codes:*** Suicidal ideation is coded as R45851, but that code alone is insufficient to warrant inclusion in the numerator. Suicidal ideation accompanied by a code indicating injury is required for reliance on the ideation code.

The suicide attempt code T1491 is only used if there is no other documentation that identifies a more detailed code.

**Appendix PCR-BH: Plan All-Cause Readmissions Rate**

The number of acute inpatient stays for consumers age 18 and older during the measurement year that were followed by an unplanned acute readmission for any diagnosis within 30 days.

**Table PCR-A: Plan All-Cause Readmissions Rates by Age and Risk Adjustment: Ages 18 to 64**

Age	Count of Index Stays (Denominator) (1)	Count of 30-Day Readmissions (Numerator) (2)	Observed Readmissions (Num/Den) (3)	Average Adjusted Probability (4)	Total Variance (5)	O/E Ratio (Observed Readmissions/Average Adjusted Probability) (6)	Lower Confidence Interval (O/E Ratio)	Upper Confidence Interval (O/E Ratio)
18-44								
45-54								
55-64								
Total								

Note: This measure requires risk adjustment. However, there are no standardized risk adjustment tables for Medicaid. Therefore, it is suggested that states report the unadjusted total rates for this measure (columns 1, 2, and 3) because Medicaid-specific risk adjustment tables are required to calculate columns 4, 5, 6, and the confidence intervals.

**Table PCR-B. Plan All-Cause Readmissions Rates by Age and Risk Adjustment: Age 65 and Older**

Age	Count of Index Stays (Denominator) (1)	Count of 30-Day Readmissions (Numerator) (2)	Observed Readmissions (Num/Den) (3)	Average Adjusted Probability (4)	Total Variance (5)	O/E Ratio (Observed Readmissions/Average Adjusted Probability) (6)	Lower Confidence Interval (O/E Ratio)	Upper Confidence Interval (O/E Ratio)
65-74								
75-84								
85+								

Appendix PCR-BH: Plan All-Cause Readmissions Rate

Age	Count of Index Stays (Denominator) (1)	Count of 30-Day Readmissions (Numerator) (2)	Observed Readmissions (Num/Den) (3)	Average Adjusted Probability (4)	Total Variance (5)	O/E Ratio (Observed Readmissions/Average Adjusted Probability) (6)	Lower Confidence Interval (O/E Ratio)	Upper Confidence Interval (O/E Ratio)
Total								

Note: This measure requires risk adjustment. However, there are no standardized risk adjustment tables for Medicaid. Therefore, CMS suggests that states report the unadjusted total rates for this measure (columns 1, 2, and 3) because Medicaid-specific risk adjustment tables are required to calculate columns 4, 5, and 6.

## Appendix AMS-BD: Adherence to Mood Stabilizers for Individuals with Bipolar I Disorder

**Table 1. Codes Used to Identify Bipolar I Disorder Diagnosis**

Category	Codes
<b>Bipolar I Disorder Diagnosis</b>	F30.10, F30.11, F30.12, F30.13, F30.2, F30.3, F30.4, F30.9, F31.0, F31.10, F31.11, F31.12, F31.13, F31.2, F31.30, F31.31, F31.32, F31.4, F31.5, F31.60, F31.61, F31.62, F31.63, F31.64, F31.70, F31.71, F31.72, F31.73, F31.74, F31.75, F31.76, F31.77, F31.78, F31.89, F31.9

**Table 2.1. Codes Used to Identify Outpatient Setting Encounter Type**

Category	Codes
<b>Current Procedural Terminology (CPT®)</b>	98960–98962, 99078, 99201–99205, 99211–99215, 99217–99220, 99241–99245, 99341–99345, 99347–99350, 99385–99387, 99395–99397, 99401–99404, 99411, 99412, 99429, 99510
<b>Healthcare Common Procedure Coding System (HCPCS)</b>	G0155, G0176, G0177, G0409–G0411, G0463, H0002, H0004, H0031, H0034–H0037, H0039, H0040, H2000, H2001, H2010–H2020, M0064, S0201, S9480, S9484, S9485, T1015
<b>Uniform Billing (UB) UB-92 revenue</b>	0510, 0511, 0513, 0516–0517, 0519–0523, 0526–0529, 0770, 0771, 0779, 0900–0905, 0907, 0911–0917, 0919, 0982, 0983
<b>CPT</b>	90791, 90792, 90832–90834, 90836–90840, 90845, 90847, 90849, 90853, 90863, 90867–90870, 90875, 90876, 90880, 99221–99223, 99231–99233, 99238, 99239, 99251–99255, 99291
<b>With Place of Service (POS)</b>	03, 05, 07, 09, 11, 12, 13, 14, 15, 20, 22, 24, 33, 49, 50, 52, 53, 71, 72



**Table 2.2. Codes Used to Identify ED Setting Encounter Type**

Category	Codes
<b>CPT</b>	99281–99285
<b>UB-92 revenue</b>	0450, 0451, 0452, 0456, 0459, 0981
<b>CPT</b>	90791, 90792, 90832–90834, 90836–90840, 90845, 90847, 90849, 90853, 90863, 90867–90870, 90875, 90876, 99291
<b>With Place of Service (POS)</b>	23

**Table 2.3. Codes Used to Identify Nonacute Inpatient Setting Encounter Type**

Category	Codes
<b>CPT</b>	99304–99310, 99315, 99316, 99318, 99324–99328, 99334–99337
<b>HCPCS</b>	H0017–H0019, T2048
<b>UB-92 revenue</b>	0118, 0128, 0138, 0148, 0158, 0190–0194, 0199, 0524, 0525, 0550–0552, 0559, 0660–0663, 0669, 1000, 1001, 1003–1005
<b>CPT</b>	90791, 90792, 90832–90834, 90836–90840, 90845, 90847, 90849, 90853, 90863, 90867–90870, 90875, 90876, 99291
<b>WITH POS</b>	31, 32, 56

**Table 2.4. Codes Used to Identify Acute Inpatient Setting Encounter Type**

Category	Codes
<b>UB-92 revenue</b>	0100, 0101, 0110–0114, 0119–0124, 0129–0134, 0139–0144, 0149–0154, 0159, 0160, 0164, 0167, 0169, 0200–0204, 0206–0209, 0210–0214, 0219, 0720–0724, 0729, 0987
<b>CPT</b>	90791, 90792, 90832–90834, 90836–90840, 90845, 90847, 90849, 90853, 90863, 90867–90870, 90875, 90876, 99221–99223, 99231–99233, 99238, 99239, 99251–99255, 99291

<b>Category</b>	<b>Codes</b>
<b>WITH POS</b>	21, 51

The following are the mood stabilizer medications by class for the denominator. The route of administration includes all oral formulations of the medications listed below.

**Table 3. Mood Stabilizer Medications**

<b>Class</b>	<b>Medication</b>
<b>Anticonvulsants</b>	carbamazepine divalproex sodium lamotrigine valproic acid
<b>Atypical Antipsychotics</b>	aripiprazole asenapine clozapine iloperidone lurasidone olanzapine paliperidone quetiapine risperidone ziprasidone
<b>Phenothiazine/Related Antipsychotics</b>	chlorpromazine fluphenazine haloperidol loxapine succinate molindone perphenazine pimozide prochlorperazine thioridazine thiothixene trifluoperazine
<b>Other Antipsychotics</b>	olanzapine-fluoxetine

<b>Class</b>	<b>Medication</b>
<b>Lithium Salts</b>	lithium carbonate lithium citrate

**Note:** Active ingredients listed above are limited to oral, buccal, sublingual, and translingual formulations only. Obsolete drug products are excluded from National Drug Codes (NDCs) with an inactive date more than 3 years prior to the beginning of the measurement period or look-back period, if applicable.

The following are the long-acting (depot) injectable antipsychotic medications by class for the denominator. The route of administration includes all injectable and intramuscular formulations of the medications listed below.

**Table 4: Long-Acting Injectable Antipsychotic Medications**

<b>Class</b>	<b>Medication</b>
<b>Typical Antipsychotic Medications</b>	fluphenazine decanoate (J2680) haloperidol decanoate (J1631)
<b>Atypical Antipsychotic Medications</b>	aripiprazole (J0401) olanzapine pamoate (J2358) paliperidone palmitate (J2426) risperidone microspheres (J2794)
<b>Long-Acting (Depot) Injectable Antipsychotic Medications</b>	fluphenazine decanoate (J2680) – 28 days' supply haloperidol decanoate (J1631) – 28 days' supply aripiprazole (J0401) – 28 days' supply olanzapine pamoate (J2358) – 28 days' supply paliperidone palmitate (J2426) – 28 days' supply risperidone microspheres (J2794) – 14 days' supply

**Note:** Since the days' supply variable is not reliable for long-acting injections in administrative data, the days' supply is imputed for the long-acting (depot) injectable antipsychotic medications listed above.

## Appendix SAA-BH: Adherence to Antipsychotics for Individuals with Schizophrenia

**Table SAA-A: Antipsychotic Medications**

Description	Prescription	Covered Days
Miscellaneous antipsychotic agents (oral)	Aripiprazole Asenapine Brexpiprazole Clozapine Haloperidol Iloperidone Loxapine Lurasidone Molindone Olanzapine Paliperidone Pimozide Quetiapine Quetiapine fumarate Risperidone Ziprasidone	
Phenothiazine antipsychotics (oral)	Chlorpromazine Fluphenazine Perphenazine Perphenazine-amitriptyline Prochloroperazine Thioridazine Trifluoperazine	
Psychotherapeutic combinations (oral)	Fluoxetine-olanzapine	
Thioxanthenes (oral)	Thiothixene	

Appendix SAA-BH: Adherence to Antipsychotics for Individuals with Schizophrenia

Description	Prescription	Covered Days
Long-acting injections	Aripiprazole Fluphenazine decanoate Haloperidol decanoate Olanzapine. Paliperidone palmitate	28 days supply
	Risperidone	14 days supply

**Note:** NCQA's National Drug Code (NDC) current list of antipsychotic medications can be found at: [HEDIS NDC page](#).

Appendix ADD-BH: Follow-Up Care for Children Prescribed Attention-Deficit Hyperactivity Disorder (ADHD) Medication

Please see NCQA Notice of Copyright and Disclaimers in front matter to Volume 1 of this manual.

**Appendix ADD-BH: Follow-Up Care for Children Prescribed Attention-Deficit Hyperactivity Disorder (ADHD) Medication**

**Table ADD.A. ADHD Medications**

<b>Description</b>	<b>Prescription</b>
CNS stimulants	Amphetamine-dextroamphetamine Dexmethylphenidate Dextroamphetamine Lisdexamfetamine Methamphetamine Methylphenidate
Alpha-2 receptor agonists	Clonidine Guanfacine
Miscellaneous ADHD medications	Atomoxetine

*Note:* NCQA's National Drug Code (NDC) current list of ADHD medications can be found at: [HEDIS NDC page](#)

**Appendix AMM-BH: Antidepressant Medication Management****Table AMM-C: Antidepressant Medications**

<b>Description</b>	<b>Prescription</b>
Miscellaneous antidepressants	Bupropion Vilazodone Vortioxetine
Monoamine oxidase inhibitors	Isocarboxazid Phenelzine Selegiline Tranlycypromine
Phenylpiperazine antidepressants	Nefazodone Trazodone
Psychotherapeutic combinations	Amitriptyline-chlordiazepoxide Amitriptyline-perphenazine Fluoxetine-olanzapine
SSNRI antidepressants	Desvenlafaxine Duloxetine Levomilnacipran Venlafaxine
SSRI antidepressants	Citalopram Escitalopram Fluoxetine Fluvoxamine Paroxetine Sertraline
Tetracyclic antidepressants	Maprotiline Mirtazapine

Appendix AMM-BH: Antidepressant Medication Management

Please see NCQA Notice of Copyright and Disclaimers in front matter to Volume 1 of this manual.

<b>Description</b>	<b>Prescription</b>
Tricyclic antidepressants	Amitriptyline Amoxapine Clomipramine Desipramine Doxepin (>6 mg) Imipramine Nortriptyline Protriptyline Trimipramine

**Note:** NCQA's National Drug Code (NDC) current list of antidepressant medications can be found at: [HEDIS NDC page](#)