



Standard Atlantic Fisheries Information System



Created By The Partners Of The ACCSP



[Quick Demo](#)

[Get Started](#)

[About SAFIS](#)

SAFIS is a real-time, web-based reporting system for commercial landings on the Atlantic coast. The Northeast Region of the National Marine Fisheries Service (NOAA Fisheries) and the Atlantic coastal states have worked together to bring this state-of-the-art tool to the seafood industry.

Users Log-In

USER NAME AND PASSWORD

To use SAFIS you first need a user name and password from NOAA Fisheries Northeast Region or your state resource agency. If you intend to use SAFIS, but do not have a user name or PIN, call (XXX) XXX-XXXX for help.

COMPUTER REQUIREMENTS

To accommodate SAFIS your computer must have the following:

1. Dial-up or high-speed Internet access
2. Microsoft Internet Explorer version 5.5 or higher. You can check your version by checking your browser's Help menu and selecting About.
3. A monitor that accommodates at least 1024 by 768 pixels. Check your Control Panel's Display icon and select Settings to see the resolution levels on your monitor.
4. At least 256 KB of available random access memory (RAM). Check your Control Panel's Settings or System icon to see the amount of RAM you have available.
5. We recommend that your computer run Windows 98, 2000 or XP. Earlier versions of Windows (95 or ME) might work, but will not be supported.

DOWNLOADS

You must download and install these free applications:

1. [J-Initiator](#) - This will install software to enable SAFIS to run on your computer as well as the SAFIS internet security certificate.
2. [Adobe Acrobat](#) - You may already have this common program. It will allow you to print receipts and landings reports.

USER NAME AND PASSWORD


To use SAFIS you first need a user name and password from NOAA Fisheries Northeast Region or your state resource agency. If you intend to use SAFIS, but do not have a user name or PIN, call

COMPUTER REQUIREMENTS


To accommodate SAFIS you need:

1. Dial-up or high speed internet connection
2. Microsoft Internet Explorer 5.0 or higher
your browser's security settings set to Medium or High
3. A monitor that is at least 15 inches wide
Display icon set to Large
4. At least 256 kilobytes of free hard disk space
Settings or System Properties
5. We recommend Windows 95 or later

File Download [X]

 Some files can harm your computer. If the file information below looks suspicious, or you do not fully trust the source, do not open or save this file.

File name: jinitssl.exe
 File type: Application
 From: www.accsp.org

 This type of file could harm your computer if it contains malicious code.

Would you like to open the file or save it to your computer?

[Open] [Save] [Cancel] [More Info]

Always ask before opening this type of file

DOWNLOADS

You must download and install these free applications:

1. [J-Initiator](#) - This will install software to enable SAFIS to run on your computer as well as the SAFIS internet security certificate.
2. [Adobe Acrobat](#) - You may already have this common program. It will allow you to print receipts and landings reports.

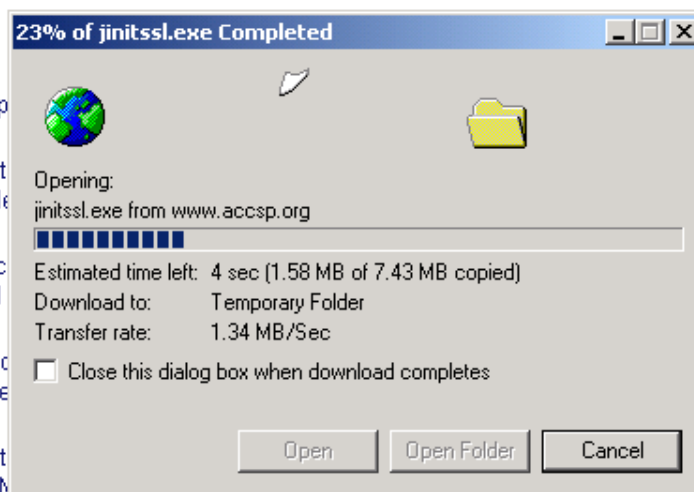
USER NAME AND PASSWORD

To use SAFIS you first need a user name and password from NOAA Fisheries Northeast Region or your state resource agency. If you intend to use SAFIS, but do not have a user name or PIN, call

COMPUTER REQUIREMENTS

To accommodate SAFIS

1. Dial-up or high-speed Internet connection
2. Microsoft Internet Explorer 4.0 or later
your browser's Help menu
3. A monitor that accommodates 800 x 600 resolution
Display icon and Settings or System
4. At least 256 KB of free hard disk space
Settings or System
5. We recommend Windows 95 or later



DOWNLOADS

You must download and install these free applications:

1. [J-Initiator](#) - This will install software to enable SAFIS to run on your computer as well as the SAFIS internet security certificate.
2. [Adobe Acrobat](#) - You may already have this common program. It will allow you to print receipts and landings reports.

USER NAME AND PASSWORD

To use SAFIS you first need a user name and password from NOAA Fisheries Northeast Region or your state resource agency. If you intend to use SAFIS, but do not have a user name or PIN, call

COMPUTER REQUIREMENTS

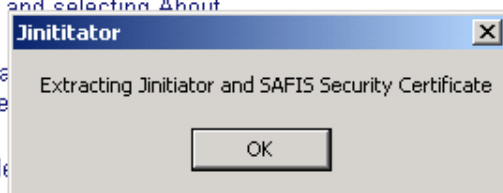
To accommodate SAFIS your computer must have the following:

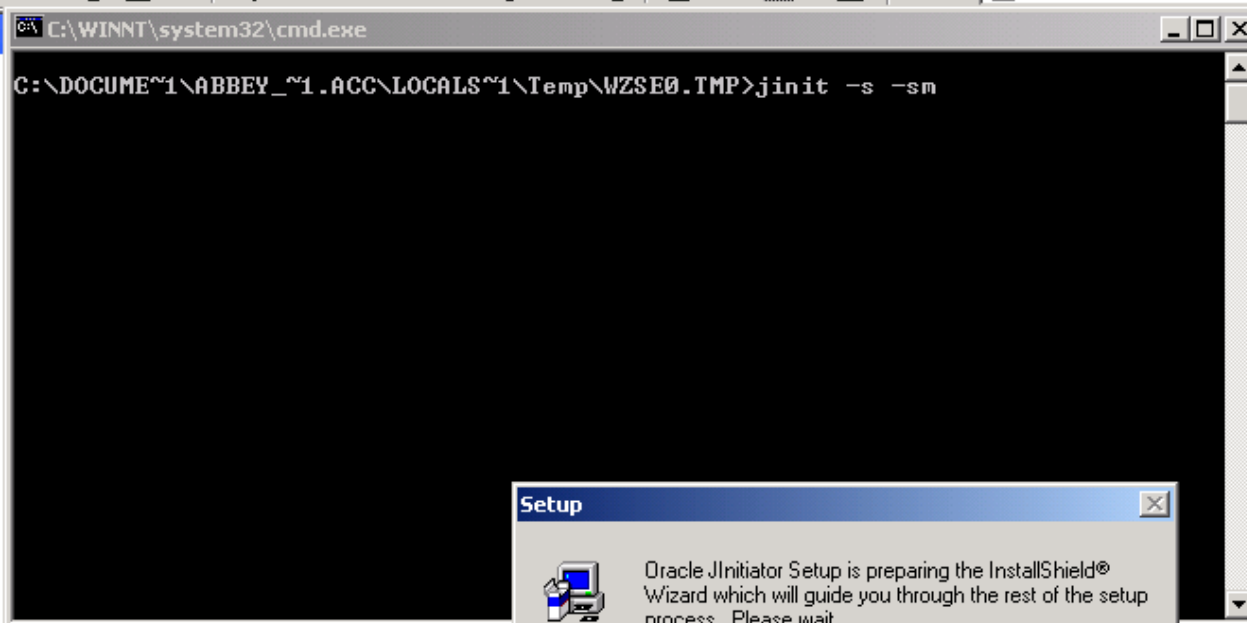
1. Dial-up or high-speed Internet access
2. Microsoft Internet Explorer version 5.5 or higher. You can check your version by checking your browser's Help menu and selecting About
3. A monitor that accommodates a resolution of 800x600 pixels. You can check your monitor's resolution in Control Panel's Display icon and select Settings or System icon to see the amount of RAM you have available.
4. At least 256 KB of available RAM. You can check your computer's RAM in Control Panel's Settings or System icon to see the amount of RAM you have available.
5. We recommend that your computer run Windows 98, 2000 or XP. Earlier versions of Windows (95 or ME) might work, but will not be supported.

DOWNLOADS

You must download and install these free applications:

1. [J-Initiator](#) - This will install software to enable SAFIS to run on your computer as well as the SAFIS internet security certificate.
2. [Adobe Acrobat](#) - You may already have this common program. It will allow you to print receipts and landings reports.





```
C:\WINNT\system32\cmd.exe  
C:\DOCUMENTS\ABBEY_1.ACC\LOCALS1\Temp\WZSE0.TMP>jinit -s -sm
```

Setup

Oracle JInitiator Setup is preparing the InstallShield® Wizard which will guide you through the rest of the setup process. Please wait.

100 %

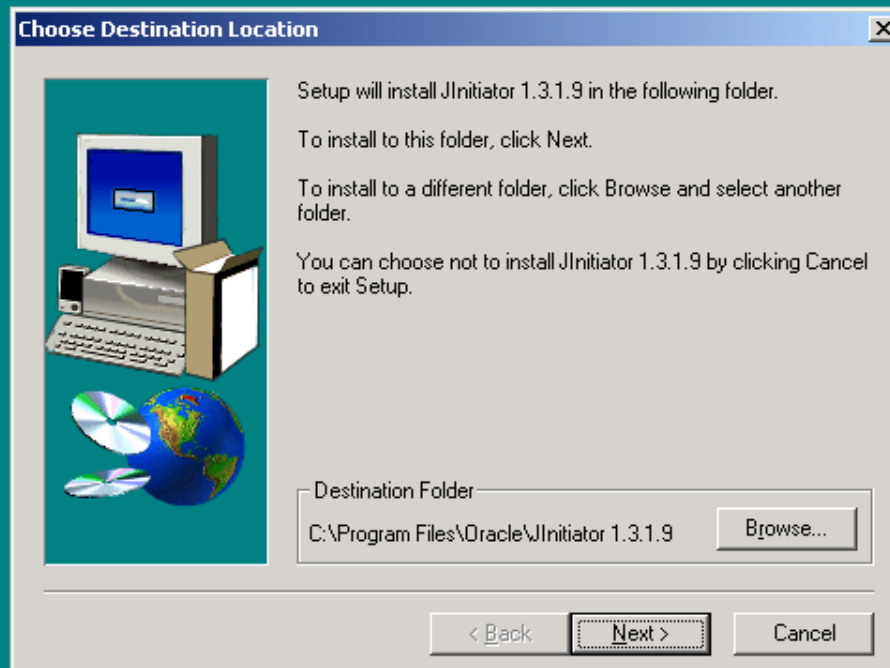
4. At least 256 k RAM. To check the amount of RAM, click on Start, Settings or System icon to see the amount of RAM you have available.
5. We recommend that your computer run Windows 98, 2000 or XP. Earlier versions of Windows (95 or ME) might work, but will not be supported.

DOWNLOADS

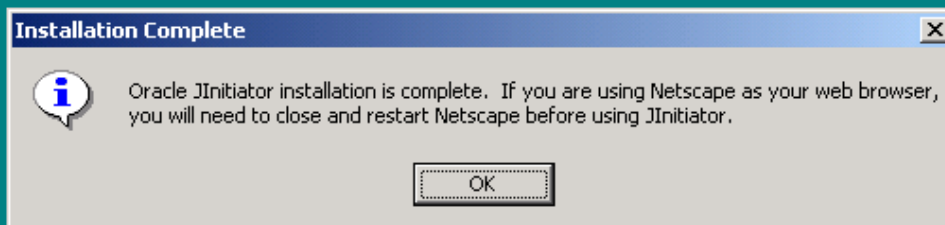
You must download and install these free applications:

1. [J-Initiator](#) - This will install software to enable SAFIS to run on your computer as well as the SAFIS internet security certificate.
2. [Adobe Acrobat](#) - You may already have this common program. It will allow you to print receipts and landings reports.

Oracle JInitiator 1.3.1.9



Oracle JInitiator 1.3.1.9





Standard Atlantic Fisheries Information System

To get started on SAFIS you need:

1. A valid user name and password from NOAA Fisheries or your state.
2. A computer that can accommodate SAFIS (see requirements below).
3. To download a few tools that make SAFIS work on your computer.

[Quick Demo](#)

[Get Started](#)

[About SAFIS](#)

[Home](#)

USER NAME AND PASSWORD

To use SAFIS you first need a user name and password from NOAA Fisheries Northeast Region or your state resource agency. If you intend to use SAFIS, but do not have a user name or PIN, call

COMPUTER REQUIREMENTS

To accommodate SAFIS your computer must have the following:

1. Dial-up or high-speed Internet access
2. Microsoft Internet Explorer version 5.5 or higher. You can check your version by checking your browser's Help menu and selecting About.



Standard Atlantic Fisheries Information System



Created By The Partners Of The ACCSP



- [Quick Demo](#)
- [Get Started](#)
- [About SAFIS](#)

SAFIS is a real-time, web-based reporting system for commercial landings on the Atlantic coast. The Northeast Region of the National Marine Fisheries Service (NOAA Fisheries) and the Atlantic coastal states have worked together to bring this state-of-the-art tool to the seafood industry.

Users Log-In

Loading Java Applet ...



Username

Password

- Go** Log Books
- Enter
 - Save
 - Edit
 - Delete
 - Complete
 - View
 - Favorites
 - Reports
 - Home
 - Sys Admin



Standard Atlantic Fisheries Information System



Created By The Partners Of The **ACCSP**
Good Data. Good Decisions.

- Contact Log
- File Upload
- No Reports
- Lic. Transfer
- Exit SAFIS**

- SAFIS Help
- Web Pages
- About SAFIS
- Functions

Please enter your username and password then click GO to enable all functions



SAFIS

Username

FEDUSER

Password

Go

Log Books

Enter

Save

Edit

Delete

Complete

View

Favorites

Reports

Home

Sys Admin

Contact Log

File Upload

No Reports

Lic. Transfer

Exit SAFIS



Standard Atlantic Fisheries Information System



Created By The Partners Of The

ACCSP
Good Data. Good Decisions.

SAFIS Help



Web Pages



About SAFIS

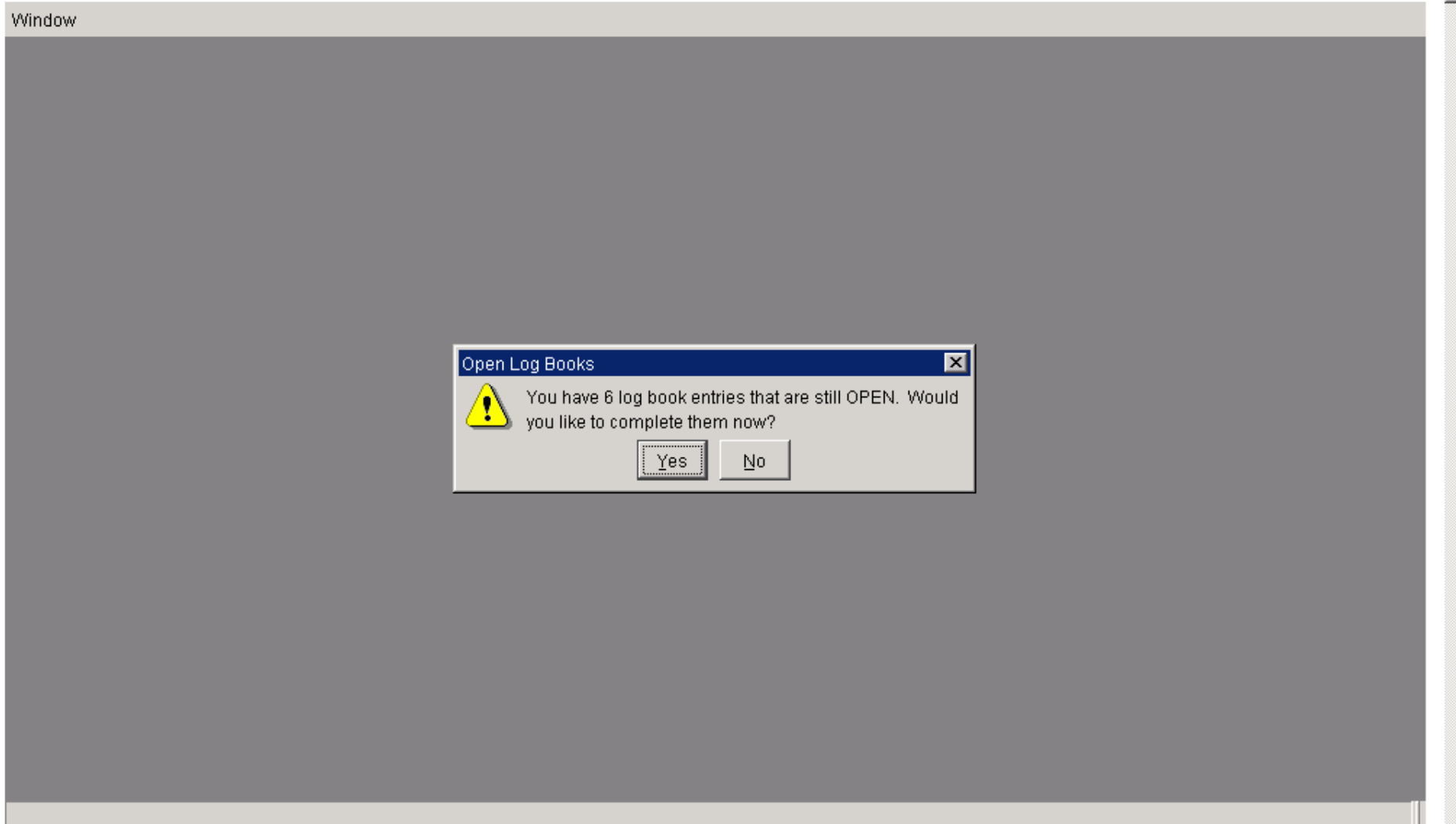


Functions




Please enter your username and password then click GO to enable all functions

Window



Open Log Books [X]

 You have 6 log book entries that are still OPEN. Would you like to complete them now?

Record: 1/1	...			
-------------	-----	--	--	--



SAFIS



SAFIS

Username

FEDUSER

Password

Go Log Books

- Enter
- Save
- Edit
- Delete
- Complete
- View
- Favorites
- Reports
- Home

- Contact Log
- File Upload
- No Reports
- Lic. Transfer
- Exit SAFIS

Welcome to the Standard Atlantic Fisheries Information System - SAFIS

5/1/04 - Federal dealers in the Northeast are required to submit landings data through SAFIS starting today.

4/2/04 - Entangled Right Whale Update: The satellite telemetry buoy attached to a line trailing the whale continues to function and indicates the whale is still swimming, and generally moving northward. It is currently off the coast of Virginia. Weather in this area continues with high seas (6-8 feet) including rain and fog.



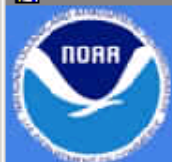
- SAFIS Help
- About SAFIS
- Web Pages
- Functions



GOOD MORNING JOHN DOE FISH COMPANY



SAFIS



SAFIS

Username

FEDUSER

Password

Go Log Books

Enter

Save

Edit

Delete

Complete

View

Favorites

Reports

Home

Contact Log

File Upload

No Reports

Lic. Transfer

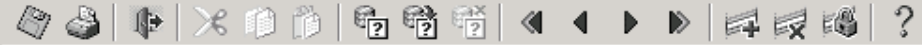
Exit SAFIS

Menu Options


Please Select The Function You Wish To Perform

- FinFish Dealer Reports
- ShellFish Dealer Log Book
- Fishermen Lobster Log Book
- Negative Report

Continue Exit



SAFIS



SAFIS
Username
FEDUSER
Password

Go Log Books

Enter
Save
Edit
Delete
Complete
View
Favorites
Reports
Home

Contact Log
File Upload
No Reports
Lic. Transfer
Exit SAFIS

Northern Species List

Dealer Information

Name: JOHN DOE FISH COMPANY
 Addr.: ONE BLACKBURN DRIVE
 City: GLOUCESTER State: RI
 Zip: 01930 Dealer Fed #: 0001

[View Reports](#)

Purchases From Fishing Vessels

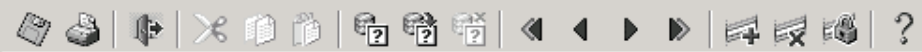
CTRL-L for Frequently Used Fisherman List ALL State License #

Fisherman: [Dropdown] [Dropdown]
 Port Landed: [Dropdown] [Dropdown]
 Dt. Landed: 04/09/04 Time: 15:43 Vessel Fed Permit #: [Dropdown]
 Dt. Purchased: 04/09/04 No Vessel USCG/St Reg #: [Dropdown]
 VTR Serial #: [Dropdown] Vessel: [Dropdown]


NMFS - Northeast Region

Species Selection Tree	Species	Grade	Market Category	Unit	Dispo.	Gear	Qty	Price	Dollars
[-] Species					FOOD				
[-] Alewife									
[-] Amberjack									
[-] Anchovy, Bay									
[-] Anglerfish									
[-] Barbier, Red									
[-] Barracuda									
[-] Barrelfish									
[-] Bearded Brotula									
[-] Big Roughy									
[-] Black Bellied Ro									
[-] Black Whiting/Si									
[-] Blackfin Gooset									

You Are Entering Log Books For: JOHN DOE FISH CO Click to Refresh Total Total Dollars: .00



SAFIS



SAFIS Username
FEDUSER
Password

Go Log Books

Enter
Save
Edit
Delete
Complete
View
Favorites
Reports
Home

Contact Log
File Upload
No Reports
Lic. Transfer
Exit SAFIS

Northern Species List Purchases From Fishing Vessels NMFS - Northeast Region

Dealer Information

Name: JOHN DOE FISH COMPANY
 Addr.: ONE BLACKBURN DRIVE
 City: GLOUCESTER State: RI
 Zip: 01930 Dealer Fed #: 0001

[View Reports](#)

CTRL-L for Frequently Used Fisherman List ALL State License #

Fisherman: [Dropdown] [Dropdown]
 Port Landed: [Dropdown] [Dropdown]
 Dt. Landed: 04/08/04 Time: 15:43 Vessel Fed Permit #: [Dropdown]
 Dt. Purchased: 04/08/04 No Vessel: USCG/St Reg #: [Dropdown]
 VTR Serial #: [Dropdown] Vessel: [Dropdown]

Species Selection Tree	Species	Grade	Market Category	Unit	Dispo.	Gear	Qty	Price	Dollars
[-] Species									
[-] Alewife									
[-] Amberjack									
[-] Anchovy_Bay									
[-] Anglerfish									
[-] Barbier, Red									
[-] Barracuda									
[-] Barrelfish									
[-] Bearded Brotula									
[-] Big Roughy									
[-] Black Bellied Ro									
[-] Black Whiting/Si									
[-] Blackfin Gooset									

Frequently Used Fishermen and Associated Vessels

Find %

Fisherman	St Lic #
Tom Joad	97775
Jean Valjean	24601
Frank Kennedy	11939

Find OK Cancel

You Are Entering Log Books For: NOAA FISHERIES Click to Refresh Total Total Dollars: .00



SAFIS



SAFIS Username FEDUSER Password *****

- Log Books, Enter, Save, Edit, Delete, Complete, View, Favorites, Reports, Home, Contact Log, File Upload, No Reports, Lic. Transfer, Exit SAFIS

Northern Species List

Purchases From Fishing Vessels

NMFS - Northeast Region

Dealer Information: Name JOHN DOE FISH COMPANY, Addr. ONE BLACKBURN DRIVE, City GLOUCESTER, State RI, Zip 01930, Dealer Fed # 0001

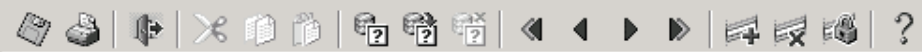
Fisherman, Port Landed, Dt. Landed 04/08/04, Time 15:43, Vessel Fed Permit #, Dt. Purchased 04/08/04, No Vessel, USCG/St Reg #, VTR Serial #, Vessel

View Reports


Table with columns: Species Selection Tree, Species, Grade, Market Category, Unit, Dispo., Gear, Qty, Price, Dollars. Includes a modal window for 'Fisherman and State License (if any) - By Partner' listing Tom Joad, Jean Valjean, and Frank Kennedy.

You Are Entering Log Books For: NOAA FISHERIES

Click to Refresh Total Total Dollars: .00



SAFIS



SAFIS
Username
FEDUSER
Password

Go **Log Books**

Enter
Save
Edit
Delete
Complete
View
Favorites
Reports
Home

Contact Log
File Upload
No Reports
Lic. Transfer
Exit SAFIS

Northern Species List

Purchases From Fishing Vessels

NMFS - Northeast Region

Dealer Information

Name: JOHN DOE FISH COMPANY
 Addr.: ONE BLACKBURN DRIVE
 City: GLOUCESTER State: RI
 Zip: 01930 Dealer Fed #: 0001

[View Reports](#)

[CTRL-L for Frequently Used Fisherman List](#) ALL State License #


Fisherman: JOHSEPH E. FISHERMAN, SR State License #: #####
 Port Landed: NAME
 Dt. Landed: 04/09/04 Time: 15:43 Vessel Fed Permit #: #####
 Dt. Purchased: 04/09/04 No Vessel: USCG/St Reg #: #####
 VTR Serial #: Vessel: DAUGHTER'S NAME

Species Selection Tree	Species	Grade	Market Category	Unit	Dispo.	Gear	Qty	Price	Dollars
[-] Species					FOOD				
[-] Alewife									
[-] Amberjack									
[-] Anchovy, Bay									
[-] Anglerfish									
[-] Barbier, Red									
[-] Barracuda									
[-] Barrelfish									
[-] Bearded Brotula									
[-] Big Roughy									
[-] Black Bellied Ro									
[-] Black Whiting/Si									
[-] Blackfin Gooset									

You Are Entering Log Books For: JOHN DOE FISH CO Click to Refresh Total Total Dollars: .00



SAFIS



SAFIS
Username
FEDUSER
Password

Go **Log Books**

Enter
Save
Edit
Delete
Complete
View
Favorites
Reports
Home

Contact Log
File Upload
No Reports
Lic. Transfer
Exit SAFIS

Northern Species List

Purchases From Fishing Vessels

NMFS - Northeast Region

Dealer Information

Name: JOHN DOE FISH COMPANY
 Addr.: ONE BLACKBURN DRIVE
 City: GLOUCESTER State: RI
 Zip: 01930 Dealer Fed #: 0001

[View Reports](#)

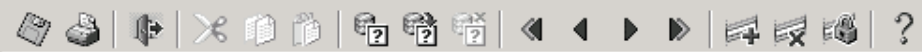
[CTRL-L for Frequently Used Fisherman List](#) ALL State License #

Fisherman: JOHSEPH E. FISHERMAN, SR State License #: #####
 Port Landed: NAME
 Dt. Landed: 04/09/04 Time: 15:43 Vessel Fed Permit #: #####
 Dt. Purchased: 04/09/04 No Vessel: USCG/St Reg #: #####
 VTR Serial #: ##### Vessel: DAUGHTER'S NAME


Species Selection Tree	Species	Grade	Market Category	Unit	Dispo.	Gear	Qty	Price	Dollars
[-] Species					FOOD				
[-] Alewife									
[-] Amberjack									
[-] Anchovy, Bay									
[-] Anglerfish									
[-] Barbier, Red									
[-] Barracuda									
[-] Barrelfish									
[-] Bearded Brotula									
[-] Big Roughy									
[-] Black Bellied Ro									
[-] Black Whiting/Si									
[-] Blackfin Gooset									

You Are Entering Log Books For: JOHN DOE FISH CO

Click to Refresh Total Total Dollars: **.00**



SAFIS Northern Species List Purchases From Fishing Vessels NMFS - Northeast Region



SAFIS
Username
FEDUSER
Password

Go Log Books
Enter
Save
Edit
Delete
Complete
View
Favorites
Reports
Home
Contact Log
File Upload
No Reports
Lic. Transfer
Exit SAFIS

Dealer Information

Name: JOHN DOE FISH COMPANY
 Addr.: ONE BLACKBURN DRIVE
 City: GLOUCESTER State: RI
 Zip: 01930 Dealer Fed #: 0001

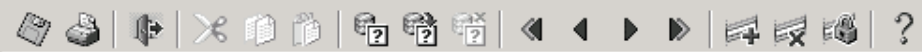
[View Reports](#)

[CTRL-L for Frequently Used Fisherman List](#) [ALL](#) [State License #](#)


Fisherman: JOSEPH E. FISHERMAN, SR
 Port Landed: NAME
 Dt. Landed: 04/08/04 Time: 15:43 Vessel Fed Permit #
 Dt. Purchased: 04/08/04 No Vessel USCG/St Reg #
 VTR Serial #: Vessel: MIDNIGHTRAMBLER

Species Selection Tree	Species	Grade	Market Category	Unit	Dispo.	Gear	Qty	Price	Dollars
Species					FOOD	TRAWLS			
+ Alewife									
+ Amberjack									
+ Anchovy, Bay									
+ Anglerfish									
+ Barbier, Red									
+ Barracuda									
+ Barrelfish									
+ Bearded Brotula									
+ Big Roughy									
+ Black Bellied Ros									
+ Black Whiting/Sil									
+ Blackfin Goosefi									

You Are Entering Log Books For: NOAA FISHERIES [Click to Refresh Total](#) Total Dollars: .00



SAFIS



SAFIS
Username: FEDUSER
Password: *****

Go Log Books

Enter
Save
Edit
Delete
Complete
View
Favorites
Reports
Home

Contact Log
File Upload
No Reports
Lic. Transfer
Exit SAFIS

Northern Species List

Purchases From Fishing Vessels

NMFS - Northeast Region

Dealer Information

Name: JOHN DOE FISH COMPANY
 Addr.: ONE BLACKBURN DRIVE
 City: GLOUCESTER State: RI
 Zip: 01930 Dealer Fed #: 0001

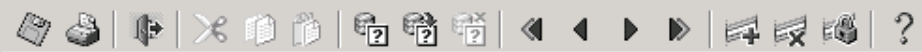
[View Reports](#)

[CTRL-L for Frequently Used Fisherman List](#) ALL State License #


Fisherman: JOSEPH E. FISHERMAN, SR State License #: #####
 Port Landed: NAME
 Dt. Landed: 04/08/04 Time: 15:43 Vessel Fed Permit #
 Dt. Purchased: 04/08/04 No Vessel USCG/St Reg # #####
 VTR Serial #: ##### Vessel: MIDNIGHTRAMBLER

Species Selection Tree	Species	Grade	Market Category	Unit	Dispo.	Gear	Qty	Price	Dollars
[-] Grunts					FOOD	TRAWLS			
[-] Haddock									
[-] Gutted-Large C									
[-] Gutted-Medium									
[-] Gutted-Scrod-L									
[-] Gutted-Snappe									
[-] Gutted-Unknow									
[-] Gutted-X-Large									
[-] Round-Unknow									
[-] Hagfish									
[-] Hake,Atlantic,Red									
[-] Hake,Atlantic,Red									
[-] Hake,Atlantic,White									

You Are Entering Log Books For: NOAA FISHERIES Click to Refresh Total Total Dollars: .00



SAFIS



SAFIS
Username: FEDUSER
Password: *****

Go Log Books

Enter
Save
Edit
Delete
Complete
View
Favorites
Reports
Home

Contact Log
File Upload
No Reports
Lic. Transfer
Exit SAFIS

Northern Species List

Purchases From Fishing Vessels

NMFS - Northeast Region

Dealer Information

Name: JOHN DOE FISH COMPANY
 Addr.: ONE BLACKBURN DRIVE
 City: GLOUCESTER State: RI
 Zip: 01930 Dealer Fed #: 0001

[View Reports](#)

[CTRL-L for Frequently Used Fisherman List](#) ALL State License #

Fisherman: JOSEPH E. FISHERMAN, SR State License #: #####

Port Landed: NAME

Dt. Landed: 04/08/04 Time: 15:43 Vessel Fed Permit #

Dt. Purchased: 04/08/04 No Vessel USCG/St Reg # #####

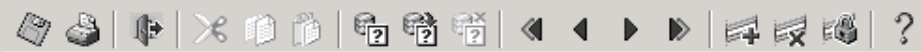
VTR Serial #: ##### Vessel: MIDNIGHTRAMBLER

Species Selection Tree	Species	Grade	Market Category	Unit	Dispo.	Gear	Qty	Price	Dollars
[-] Grunts	HADDOCK	GUTTED	LARGE OR LOBSTER	LB	FOOD	TRAWLS			
[-] Haddock									
[-] Guttet-Large C									
[-] Guttet-Medium									
[-] Guttet-Scrod-L									
[-] Guttet-Snappe									
[-] Guttet-Unknow									
[-] Guttet-X-Large									
[-] Round-Unknow									
[-] Hagfish									
[-] Hake,Atlantic,Red									
[-] Hake,Atlantic,Red									
[-] Hake,Atlantic,White									




You Are Entering Log Books For: NOAA FISHERIES

Click to Refresh Total Total Dollars: .00



SAFIS



SAFIS Username
FEDUSER

Password

Go Log Books

Enter
Save
Edit
Delete
Complete
View
Favorites
Reports
Home

Contact Log
File Upload
No Reports
Lic. Transfer
Exit SAFIS

Northern Species List

Purchases From Fishing Vessels

NMFS - Northeast Region

Dealer Information

Name: JOHN DOE FISH COMPANY
 Addr.: ONE BLACKBURN DRIVE
 City: GLOUCESTER State: RI
 Zip: 01930 Dealer Fed #: 0001

[View Reports](#)

[CTRL-L for Frequently Used Fisherman List](#) ALL State License #


Fisherman: JOSEPH E. FISHERMAN, SR State License #: #####
 Port Landed: NAME
 Dt. Landed: 04/08/04 Time: 15:43 Vessel Fed Permit #
 Dt. Purchased: 04/08/04 No Vessel USCG/St Reg # #####
 VTR Serial #: ##### Vessel: MIDNIGHTRAMBLER

Species Selection Tree	Species	Grade	Market Category	Unit	Dispo.	Gear	Qty	Price	Dollars
[-] Grunts	HADDOCK	GUTTED	LARGE OR LOBSTER	LB	FOOD	TRAWLS	500.00		
[-] Haddock									
[-] Guttled-Large C									
[-] Guttled-Medium									
[-] Guttled-Scrod-L									
[-] Guttled-Snappe									
[-] Guttled-Unknow									
[-] Guttled-X-Large									
[-] Round-Unknow									
[-] Hagfish									
[-] Hake,Atlantic,Red									
[-] Hake,Atlantic,Red									
[-] Hake,Atlantic,White									

You Are Entering Log Books For: NOAA FISHERIES Click to Refresh Total Total Dollars: .00



SAFIS Northern Species List Purchases From Fishing Vessels NMFS - Northeast Region



SAFIS
 Username: FEDUSER
 Password: *****
 Go Log Books

Enter
 Save
 Edit
 Delete
 Complete
 View
 Favorites
 Reports
 Home

Contact Log
 File Upload
 No Reports
 Lic. Transfer
Exit SAFIS

Dealer Information

Name: JOHN DOE FISH COMPANY
 Addr.: ONE BLACKBURN DRIVE
 City: GLOUCESTER State: RI
 Zip: 01930 Dealer Fed #: 0001

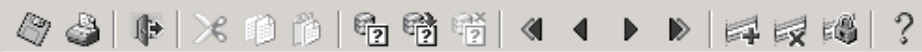
[View Reports](#)

[CTRL-L for Frequently Used Fisherman List](#) ALL State License #


Fisherman: JOSEPH E. FISHERMAN, SR State License #: #####
 Port Landed: NAME
 Dt. Landed: 04/08/04 Time: 15:43 Vessel Fed Permit #
 Dt. Purchased: 04/08/04 No Vessel USCG/St Reg # #####
 VTR Serial #: ##### Vessel: MIDNIGHTRAMBLER

Species Selection Tree	Species	Grade	Market Category	Unit	Dispo.	Gear	Qty	Price	Dollars
[-] Grunts	HADDOCK	GUTTED	LARGE OR LOBSTER	LB	FOOD	DIP NETS A	500.00	1.15	
[-] Haddock									
[-] Guttled-Large C									
[-] Guttled-Medium									
[-] Guttled-Scrod-L									
[-] Guttled-Snappe									
[-] Guttled-Unknow									
[-] Guttled-X-Large									
[-] Round-Unknow									
[-] Hagfish									
[-] Hake,Atlantic,Red									
[-] Hake,Atlantic,Red									
[-] Hake,Atlantic,White									

You Are Entering Log Books For: NOAA FISHERIES Click to Refresh Total Total Dollars: .00



SAFIS Northern Species List Purchases From Fishing Vessels NMFS - Northeast Region



SAFIS
 Username: FEDUSER
 Password: ****

Go Log Books

Enter
 Save
 Edit
 Delete
 Complete
 View
 Favorites
 Reports
 Home

Contact Log
 File Upload
 No Reports
 Lic. Transfer
 Exit SAFIS

Dealer Information

Name: JOHN DOE FISH COMPANY
 Addr.: ONE BLACKBURN DRIVE
 City: GLOUCESTER State: RI
 Zip: 01930 Dealer Fed #: 0001

[View Reports](#)

[CTRL-L for Frequently Used Fisherman List](#) ALL State License #

Fisherman: JOSEPH E. FISHERMAN, SR State License #: #####
 Port Landed: NAME
 Dt. Landed: 04/08/04 Time: 15:43 Vessel Fed Permit #
 Dt. Purchased: 04/08/04 No Vessel USCG/St Reg # #####
 VTR Serial #: ##### Vessel: MIDNIGHTRAMBLER

Species Selection Tree	Species	Grade	Market Category	Unit	Dispo.	Gear	Qty	Price	Dollars
[-] Grunts	HADDOCK	GUTTED	LARGE OR LOBSTER L	LB	FOOD	TRAWLS	500.00	1.15	575.00
[-] Haddock					FOOD	TRAWLS			
[-] Guttet-Large C									
[-] Guttet-Medium									
[-] Guttet-Scrod-L									
[-] Guttet-Snappe									
[-] Guttet-Unknow									
[-] Guttet-X-Large									
[-] Round-Unknow									
[-] Hagfish									
[-] Hake,Atlantic,Red									
[-] Hake,Atlantic,Red									
[-] Hake,Atlantic,White									



You Are Entering Log Books For: NOAA FISHERIES [Click to Refresh Total](#) Total Dollars: 575.00



A Dealer Report Has Been Filed

You have successfully entered Log Book #:

What would you like to do next?

Enter another dealer log book Yes No

Print current dealer log book receipt Yes No

Return to home page Yes No



SAFIS



SAFIS

Username

FEDUSER

Password

Go Log Books

- Enter
- Save
- Edit
- Delete
- Complete
- View
- Favorites
- Reports
- Home

- Contact Log
- File Upload
- No Reports
- Lic. Transfer
- Exit SAFIS

Welcome to the Standard Atlantic Fisheries Information System - SAFIS

5/1/04 - Federal dealers in the Northeast are required to submit landings data through SAFIS starting today.

4/2/04 - Entangled Right Whale Update: The satellite telemetry buoy attached to a line trailing the whale continues to function and indicates the whale is still swimming, and generally moving northward. It is currently off the coast of Virginia. Weather in this area continues with high seas (6-8 feet) including rain and fog.




- SAFIS Help
- About SAFIS
- Web Pages
- Functions



GOOD MORNING JOHN DOE FISH COMPANY.



SAFIS



SAFIS

Username
FEDUSER

Password

Go Log Books

Enter

Save

Edit

Delete

Complete

View

Favorites

Reports

Home

Contact Log

File Upload

No Reports

Lic. Transfer

Exit SAFIS

Welcome to the Standard Atlantic Fisheries Information System - SAFIS

5/1/04 - Federal dealers in the Northeast are required to submit landings data through SAFIS starting today.


4/2/04 - Entangled Right Whale Update: The satellite telemetry buoy attached to a line trailing the whale continues to function and indicates the whale is still swimming, and generally moving northward. It is currently off the coast of Virginia. Weather in this area continues with high seas (6-8 feet) including rain and fog.



- SAFIS Help
- About SAFIS
- Web Pages
- Functions



GOOD MORNING JOHN DOE FISH COMPANY.



SAFIS
 Username
 FEDUSER
 Password

 Go Log Books
 Enter
 Save
 Edit
 Delete
 Complete
 View
 Favorites
 Reports
 Home
 Contact Log
 File Upload
 No Reports
 Lic. Transfer
 Exit SAFIS

Welcome to the Standard Atlantic Fisheries Information System - SAFIS

Dealer Logs Reports

The dealer report(s) listed below are STILL OPEN, please fill in the appropriate values

DEALER REPORT(s)		Date of Purchase	Landing Date	Vessel Trip Report Serial #
First	▲	26-MAR-2004	25-MAR-2004	1111
Next		09-APR-2004	08-APR-2004	
Previous		09-APR-2004	08-APR-2004	
Last	▼	09-APR-2004	08-APR-2004	88956

FISHERMAN Vessel Name MIDNIGHTRAMBLER

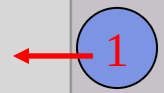
First Name	MI	Last Name	License Number
JAMES	J	NOON	PEL000976

LANDING(s)

Common Name	Market Description	Disposition	Reported			
			Quantity	Units	Price	Dollars
▲ ANGLERFISH	Small	Food	200	LB	1	200
CUSK	Large	Food	300	LB	.5	150
HADDOCK	Large	Food	300	LB	1.5	450
HADDOCK	Extra Large	Food		LB		

NOTE: Fields in Red are REQUIRED.

Save Exit





- SAFIS
- Username
FEDUSER
- Password

- Go [Log Books](#)
- Enter
- Save
- Edit
- Delete
- Complete
- View
- Favorites
- Reports
- Home

- Contact Log
- File Upload
- No Reports
- Lic. Transfer
- Exit SAFIS

Welcome to the Standard Atlantic Fisheries Information System - SAFIS

Dealer Logs Reports

The dealer report(s) listed below are **STILL OPEN**, please fill in the appropriate values

DEALER REPORT(s)		Date of Purchase	Landing Date	Vessel Trip Report Serial #
First	▲	26-MAR-2004	25-MAR-2004	1111
Next		09-APR-2004	08-APR-2004	
Previous		09-APR-2004	08-APR-2004	
Last	▼	09-APR-2004	08-APR-2004	88956

FISHERMAN Vessel Name: MIDNIGHTRAMBLER

First Name	MI	Last Name	License Number
JAMES	J	NOON	PEL000976

LANDING(s)

Common Name	Market Description	Disposition	Reported			
			Quantity	Units	Price	Dollars
▲ ANGLERFISH	Small	Food	200	LB	1	200
CUSK	Large	Food	300	LB	.5	150
HADDOCK	Large	Food	300	LB	1.5	450
HADDOCK	Extra Large	Food	800	LB	1.3	1040
▼						

NOTE: Fields in Red are REQUIRED.



SAFIS



SAFIS

Username

FEDUSER

Password

Go Log Books

- Enter
- Save
- Edit
- Delete
- Complete
- View
- Favorites
- Reports
- Home

- Contact Log
- File Upload
- No Reports
- Lic. Transfer
- Exit SAFIS

Welcome to the Standard Atlantic Fisheries Information System - SAFIS

5/1/04 - Federal dealers in the Northeast are required to submit landings data through SAFIS starting today.

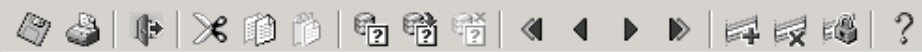
4/2/04 - Entangled Right Whale Update: The satellite telemetry buoy attached to a line trailing the whale continues to function and indicates the whale is still swimming, and generally moving northward. It is currently off the coast of Virginia. Weather in this area continues with high seas (6-8 feet) including rain and fog.



- SAFIS Help
- About SAFIS
- Web Pages
- Functions



GOOD MORNING JOHN DOE FISH COMPANY.



SAFIS
 Username

 Password

- Go [Log Books](#)
- Enter
- Save
- Edit
- Delete
- Complete
- View
- Favorites
- Reports
- Home

- Contact Log
- File Upload
- No Reports
- Lic. Transfer
- Exit SAFIS

Welcome to the Standard Atlantic Fisheries Information System - SAFIS

5/1/04 – Federal dealers in the Northeast are required to submit landings data through SAFIS starting today.

4/2/04 – Entangled Right Whale Update: The satellite telemetry buoy attached to a line trailing the whale continues to function and indicates the whale is still swimming, and generally moving northward. It is currently off the coast of Virginia. Weather in this area continues with high seas (6-8 feet) including rain and fog.



Search Criteria

Search Records By:

Date Range Vessel

Confirmation # Show All

From: To:

Vessel:

Conf #:



- SAFIS Help
- About SAFIS
- Web Pages
- Functions



GOOD MORNING JOHN DOE FISH COMPANY.



SAFIS



SAFIS

Username

FEDUSER

Password

Go Log Books

- Enter
- Save
- Edit
- Delete
- Complete
- View
- Favorites
- Reports
- Home

- Contact Log
- File Upload
- No Reports
- Lic. Transfer
- Exit SAFIS

Welcome to the Standard Atlantic Fisheries Information System - SAFIS

5/1/04 - Federal dealers in the Northeast are required to submit landings data through SAFIS starting today.

4/2/04 - Entangled Right Whale Update: The satellite telemetry buoy attached to a line trailing the whale continues to function and indicates the whale is still swimming, and generally moving northward. It is currently off the coast of Virginia. Weather in this area continues with high seas (6-8 feet) including rain and fog.



- SAFIS Help
- About SAFIS
- Web Pages
- Functions



GOOD MORNING JOHN DOE FISH COMPANY.



SAFIS



SAFIS
 Username
 FEDUSER
 Password

- Go Log Books
- Enter
- Save
- Edit
- Delete
- Complete
- View
- Favorites
- Reports
- Home

- Contact Log
- File Upload
- No Reports
- Lic. Transfer
- Exit SAFIS

Welcome to the Standard Atlantic Fisheries Information System - SAFIS

10/31/2003 **NMFS version of SAFIS is in testing phase**

Define Favorite Species List Items

Please Select Your Favorites Species List Items for -> FIN FISH

	Species Common Name	Grade-Market-Unit
<input checked="" type="checkbox"/>	BUTTERFISH	Round-Large/Mix-Lb
<input type="checkbox"/>	BUTTERFISH	Round-Medium -Lb
<input type="checkbox"/>	BUTTERFISH	Round-Small-Lb
<input type="checkbox"/>	BUTTERFISH	Round-Super Super Small-Lb
<input type="checkbox"/>	BUTTERFISH	Round-Unknown-Lb
<input type="checkbox"/>	CAPELIN	Round-Unknown-Lb
<input checked="" type="checkbox"/>	CARP	Round-Unknown-Lb
<input type="checkbox"/>	CATFISH, BLUE	Round-Unknown-Lb

Save
Exit

[About SAFIS](#)
[Functions](#)

Please enter your username and password then click GO to enable all functions
GOOD AFTERNOON JOHN DOE FISH CO



SAFIS



SAFIS

Username

FEDUSER

Password

Go Log Books

- Enter
- Save
- Edit
- Delete
- Complete
- View
- Favorites
- Reports
- Home

- Contact Log
- File Upload
- No Reports
- Lic. Transfer
- Exit SAFIS

Welcome to the Standard Atlantic Fisheries Information System - SAFIS

5/1/04 - Federal dealers in the Northeast are required to submit landings data through SAFIS starting today.

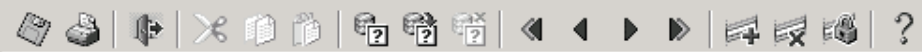
4/2/04 - Entangled Right Whale Update: The satellite telemetry buoy attached to a line trailing the whale continues to function and indicates the whale is still swimming, and generally moving northward. It is currently off the coast of Virginia. Weather in this area continues with high seas (6-8 feet) including rain and fog.



- SAFIS Help
- About SAFIS
- Web Pages
- Functions



GOOD MORNING JOHN DOE FISH COMPANY.



SAFIS



SAFIS
Username
FEDUSER
Password

Go Log Books

Enter
Save
Edit
Delete
Complete
View
Favorites
Reports
Home

Contact Log
File Upload
No Reports
Lic. Transfer
Exit SAFIS

Welcome to the Standard Atlantic Fisheries Information System - SAFIS

5/1/04 – Federal dealers in the Northeast are required to submit landings data through SAFIS starting today.

4/2/04 – Entangled Right Whale Update: The satellite telemetry buoy attached to a line trailing the whale continues to function and indicates the whale is still swimming, and generally moving northward. It is currently off the coast of Virginia. Weather in this area continues with high seas (6-8 feet) including rain and fog.

Standard Fisheries Information Sys Reports

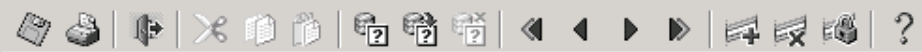
Standard Fisheries Information System Reports

- Landing and Dollars by Vessel
- Landings and Dollars by License Holder
- Landings and Dollars by Species
- Landings and Dollars by Date Range
- Dealer Log Book Receipt

Execute Report Exit

About SAFIS  Functions 

GOOD MORNING JOHN DOE FISH COMPANY.



SAFIS
 Username

 Password

- Go Log Books
- Enter
- Save
- Edit
- Delete
- Complete
- View
- Favorites
- Reports
- Home

- Contact Log
- File Upload
- No Reports
- Lic. Transfer
- Exit SAFIS

Welcome to the Standard Atlantic Fisheries Information System - SAFIS

5/1/04 – Federal dealers in the Northeast are required to submit landings data through SAFIS starting today.

4/2/04 – Entangled Right Whale Update: The satellite telemetry buoy attached to a line trailing the whale continues to function and indicates the whale is still swimming, and generally moving northward. It is currently off the coast of Virginia. Weather in this area continues with high seas (6-8 feet) including rain and fog.

Search Criteria

Enter Date Range For Selected Report

From Date: MM/DD/YY

To Date: MM/DD/YY



- SAFIS Help
- About SAFIS
- Web Pages
- Functions



GOOD MORNING JOHN DOE FISH COMPANY.

JOHN DOE FISH COMPANY
Landings and Dollars by Speci

From: 22-SEP-02 To: 27-SEP-02


Common Nam	Landing Dat	Date Of Pu	Pounds	Price	Dollars
ALBACORE	09/23/02	09/23/02	100	.8	\$80
				Total:	\$80
BASS, STRIPED	09/26/02	09/26/02	60	1.5	\$90
				Total:	\$90
COD, ATLANTIC	09/26/02	09/26/02	3	2	\$6
	09/25/02	09/25/02	4	3	\$12
	09/24/02	09/24/02	9	2	\$18
	09/24/02	09/24/02	4	5	\$20
	09/23/02	09/23/02	100	.23	\$23
	09/24/02	09/24/02	5	5	\$25
	09/26/02	09/26/02	5	6	\$30
	09/24/02	09/24/02	6	8	\$48
	09/26/02	09/26/02	45	1.2	\$54
	09/23/02	09/23/02	33	2	\$66
	09/24/02	09/24/02	33	2	\$66
	09/23/02	09/23/02	100	.75	\$75
	09/26/02	09/26/02	75	1.29	\$96.75
	09/24/02	09/24/02	44	3	\$132
	09/24/02	09/24/02	44	3	\$132
	09/23/02	09/23/02	150	1.25	\$187.5
	09/23/02	09/23/02	35	6	\$210
				Total:	\$1,201.25
CUSK	09/26/02	09/26/02	40		

CUSK

09/26/02 09/26/02 40



SAFIS



SAFIS
Username
FEDUSER
Password

Go Log Books

Enter
Save
Edit
Delete
Complete
View
Favorites
Reports
Home

Contact Log
File Upload
No Reports
Lic. Transfer
Exit SAFIS

Welcome to the Standard Atlantic Fisheries Information System - SAFIS

5/1/04 - Federal dealers in the Northeast are required to submit landings data through SAFIS starting today.

4/2/04 - Entangled Right Whale Update: The satellite telemetry buoy attached to a line trailing the whale continues to function and indicates the whale is still swimming, and generally moving northward. It is currently off the coast of Virginia. Weather in this area continues with high seas (6-8 feet) including rain and fog.

Standard Fisheries Information Sys Reports

Standard Fisheries Information System Reports

- Landing and Dollars by Vessel
- Landings and Dollars by License Holder
- Landings and Dollars by Species
- Landings and Dollars by Date Range
- Dealer Log Book Receipt

Execute Report Exit

About SAFIS 

Functions 

GOOD MORNING JOHN DOE FISH COMPANY.



SAFIS



SAFIS

Username

FEDUSER

Password

Go Log Books

- Enter
- Save
- Edit
- Delete
- Complete
- View
- Favorites
- Reports
- Home

- Contact Log
- File Upload
- No Reports
- Lic. Transfer
- Exit SAFIS**

Welcome to the Standard Atlantic Fisheries Information System - SAFIS

5/1/04 - Federal dealers in the Northeast are required to submit landings data through SAFIS starting today.

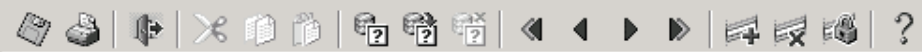
4/2/04 - Entangled Right Whale Update: The satellite telemetry buoy attached to a line trailing the whale continues to function and indicates the whale is still swimming, and generally moving northward. It is currently off the coast of Virginia. Weather in this area continues with high seas (6-8 feet) including rain and fog.



- SAFIS Help
- Web Pages
- About SAFIS
- Functions



GOOD MORNING JOHN DOE FISH COMPANY.



SAFIS



SAFIS
Username
FEDUSER
Password

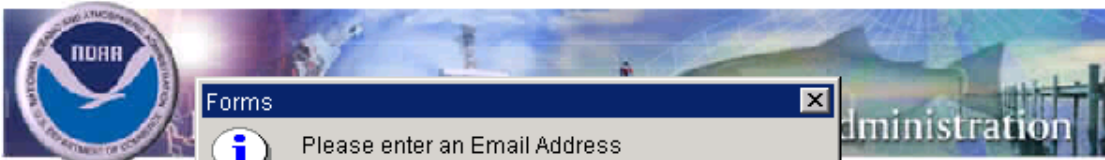
Go Log Books

- Enter
- Save
- Edit
- Delete
- Complete
- View
- Favorites
- Reports
- Home

- Contact Log
- File Upload
- No Reports
- Lic. Transfer
- Exit SAFIS

Welcome to the Standard Atlantic Fisheries Information System - SAFIS

10/31/2003 **NMFS version of SAFIS is in testing phase**



Forms

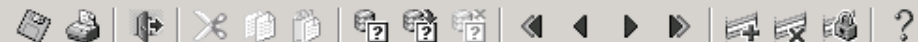
Please enter an Email Address
Daily Confirmations will be emailed to this address.

OK

- SAFIS Help
- About SAFIS
- Web Pages
- Functions



Please enter your username and password then click GO to enable all functions
GOOD AFTERNOON JOHN DOE FISH CO



SAFIS



SAFIS

Username

FEDUSER

Password

Go

Log Books

Enter

Save

Edit

Delete

Complete

View

Favorites

Reports

Home

Contact Log

File Upload

No Reports

Lic. Transfer

Exit SAFIS

Welcome to the Standard Atlantic Fisheries Information System - SAFIS

10/31/2007 - NMFS version of SAFIS is in testing phase.

SAFIS Dealer Report Confirmation

Dealer Name: Good Afternoon JOHN DOE FISH CO

Location: ONE BLACKBURN DRIVE

GLOUCESTER, RI 01930

State License/Permit #

Federal Permit # 0001

Email Address for Report Confirmation Purposes: johndoefishcompany@xxxxx.net

I certify that the information provided is true, complete and correct
to the best of my knowledge, and made in good faith:

MAKING A FALSE STATEMENT THROUGH THIS APPLICATION IS PUNISHABLE BY LAW (18 U.S.C. 1001)

User SAFIS Account Password: ****

CONFIRM SUBMISSION and EXIT

EXIT - NO CONFIRMATION

About SAFIS

Functions

Please enter your username and password then click GO to enable all functions

GOOD AFTERNOON JOHN DOE FISH CO