

Security Settings for the Tool

(Pour des instructions en français, faites défiler vers la droite.-->)

In order to run this application, you must have macros enabled.

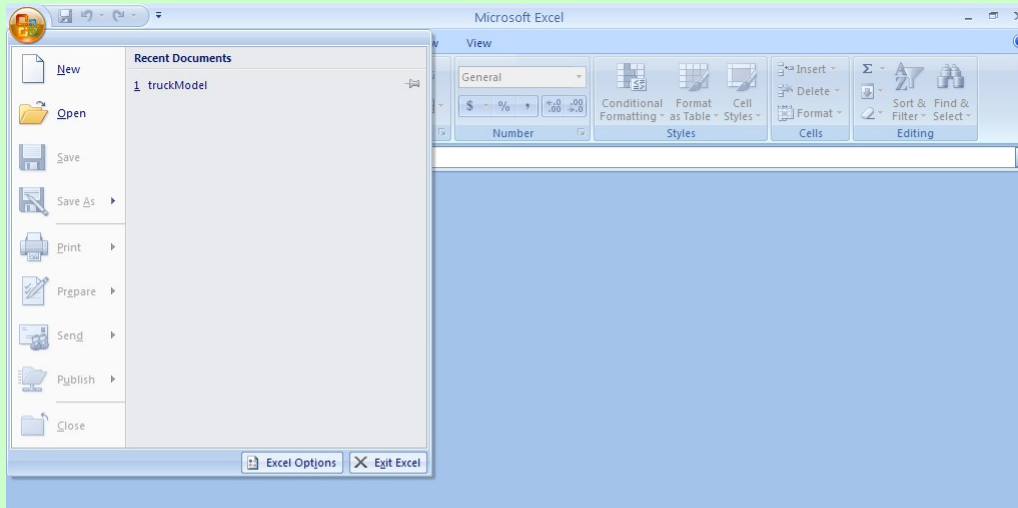
For Excel 2007, Excel 2010, and Excel 2013 Users: (If you are using Excel 2003, please scroll down.)

If an "Options..." button appears in the menu bar above, follow these instructions:

1. **Click the Options button.** This button appears after the Security Warning in the Excel 2007 menu bar.
2. **Enable content.** In the Microsoft Office Security Options dialog box, choose "Enable this content" and click OK.

If the "Options..." button does not appear, use the instructions below. [**NOTE:** If you do not have a round button in the top left corner of the screen (see image below), you are probably using an earlier version of Excel, in which case you need to scroll to the instructions below.)

1. **Click the Office button.** This button appears in the top left corner of the screen in Excel 2007/2010.
2. **Go to Excel Options.** Click the "Excel Options" button in the bottom right corner of the pull-down menu.



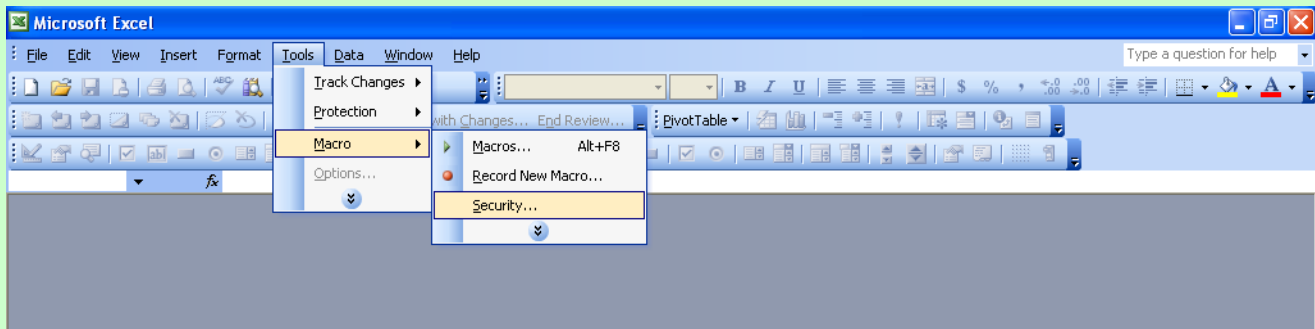
3. **Go to the Trust Center.** On the Excel Options screen, click on *Trust Center* in the left navigation bar.
4. **Go to the Trust Center Settings.** Click on *Trust Center Settings* in the bottom right portion of the screen.
5. **Change security settings.** Choose the setting "*Disable all macros with notification*" and click OK.
6. **Reopen the file.** Close the Excel file and then re-open it.

For Excel 2003 Users:

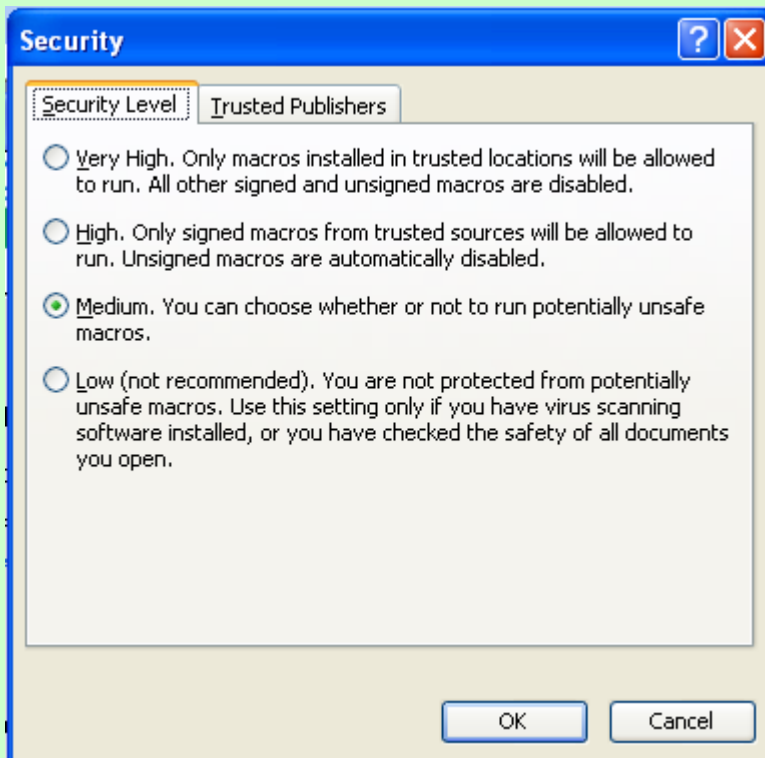
You have reached this screen either because you clicked "Disable Macros" or because your security settings are set to "Disable all macros with notification." simply close this file and reopen it, selecting "Enable Macros" instead.

If you were not given the choice to enable or disable macros, then you will first need to change your security settings.

1. **Open the Security dialog box.** In Excel 2003, on the menu bar, go to Tools > Macro > Security Level

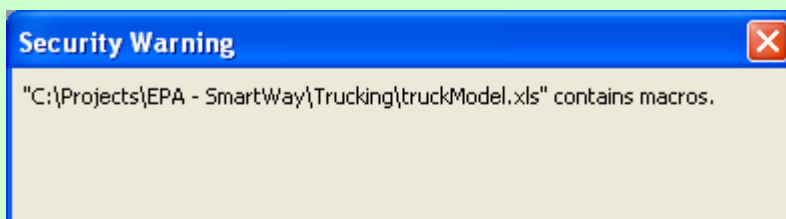


2. **Set your Excel security setting level to “Medium.”** In the Security dialog box, choose Medium and



3. **Close and re-open the file.** Close this file. If prompted to save changes, click No. Re-open the file.

4. **Enable macros.** When prompted with the Security Warning dialog box, click the Enable Macros button



Macros may contain viruses. It is usually safe to disable macros, but if the macros are legitimate, you might lose some functionality.

Disable Macros

Enable Macros

More Info

If following these steps still does not enable you to run the application, contact your PAM.

Paramètres de sécurité de l'outil

(*<--For instructions in English, please scroll to the left.*)

Pour exécuter cette application, vous devez activer les macros.

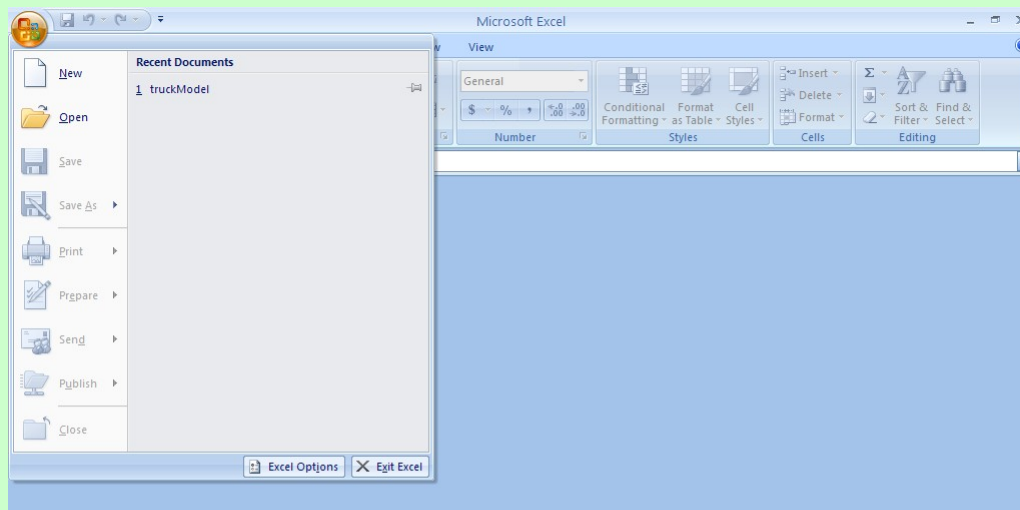
Utilisateurs d'Excel 2007, Excel 2010, et Excel 2013 : (*si vous utilisez Excel 2003, faites défiler la page pour continuer*)

Si un bouton « Options... » apparaît dans la barre de menus ci-dessus, suivez ces directives :

1. **Cliquez sur le bouton Options.** Ce bouton s'affiche après l'avertissement de sécurité, dans la barre de menus.
2. **Activation du contenu :** Dans la boîte de dialogue des options de sécurité Microsoft Office, sélectionnez « A

Si le bouton « Options... » n'est pas affiché, suivez les directives ci-dessous. [**REMARQUE** : Si le bouton Office n'est pas affiché, il est probable que vous utilisez une version antérieure d'Excel. Vous devez alors faire défiler la page pour obtenir Excel 2003.]

1. **Cliquez sur le bouton Office.** Ce bouton est affiché dans le coin supérieur gauche de l'écran dans Excel 2007.
2. **Accès aux options d'Excel :** Cliquez sur le bouton « Options Excel » dans le coin inférieur droit du menu déroulant.



3. **Accès au Centre de gestion de la confidentialité :** Dans l'écran des options d'Excel, cliquez sur Centre de gestion de la confidentialité dans la barre de navigation de gauche.

4. **Accès aux paramètres du Centre de gestion de la confidentialité :** Cliquez sur l'option Paramètres du Centre de gestion de la confidentialité dans la barre de navigation inférieure droite de l'écran.

5. **Modification des paramètres de sécurité :** Sélectionnez l'option « Désactiver toutes les macros avec notification ».

6. **Réouverture du fichier :** Fermez le fichier Excel, puis ouvrez-le de nouveau.

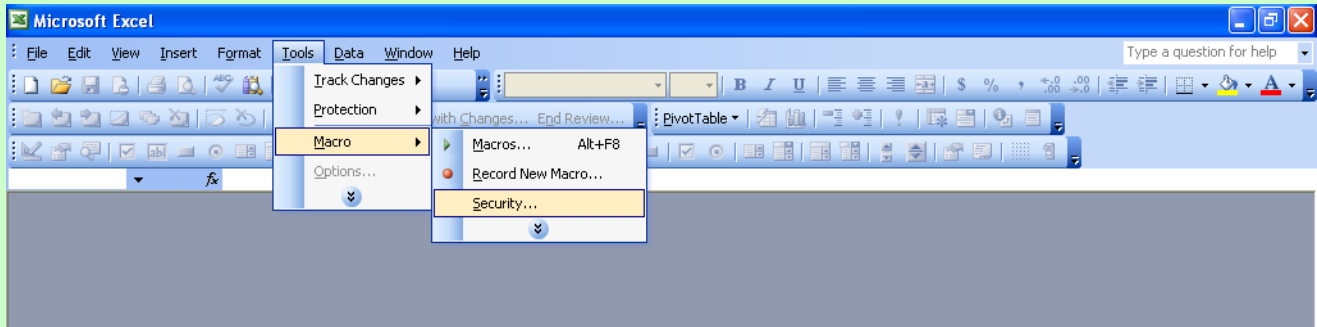
Utilisateurs d'Excel 2003 :

vous avez atteint cet écran parce que vous avez cliqué sur l'option « Désactiver toutes les macros » ou parce que le niveau de sécurité est trop élevé.

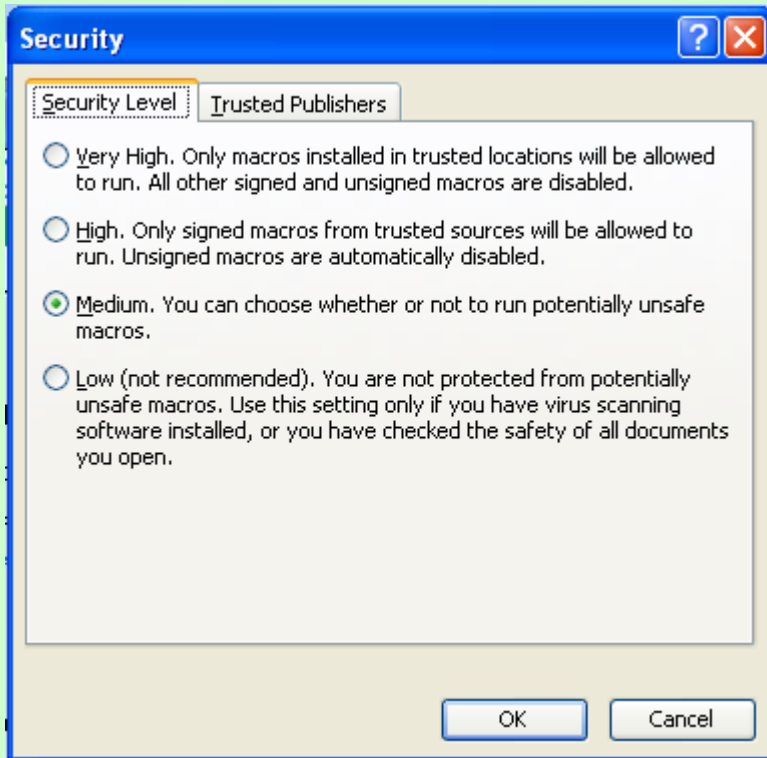
Si vous avez cliqué sur « Désactiver tous les macros », il suffit de fermer le fichier et de l'ouvrir de nouveau en sélectionnant « Activer toutes les macros ».

Si le système ne vous propose pas d'activer ou de désactiver les macros, vous devez d'abord modifier vos paramètres de sécurité dans le menu « Outils » > « Paramètres de sécurité » ci-dessous.

1. **Ouverture de la boîte de dialogue Sécurité** : Dans Excel 2003, dans la barre de menus, cliquez sur Outils > M

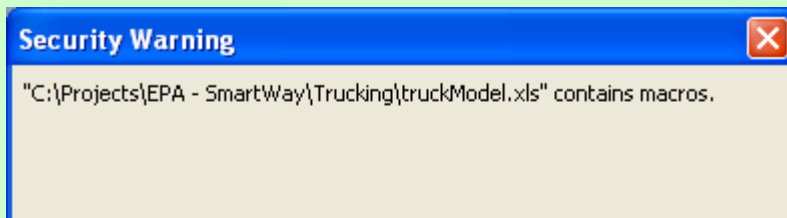


2. **Sélection du niveau de sécurité « Moyenne »** : Dans la fenêtre Sécurité, sélectionnez l'option Moyenne et cli



3. **Fermeture et réouverture du fichier** : **Fermez le fichier**. Si le système vous propose de sauvegarder les char nouveau.

4. **Activation des macros** : Lorsque la boîte de dialogue d'avertissement de sécurité vous le propose, cliquez sur



Macros may contain viruses. It is usually safe to disable macros, but if the macros are legitimate, you might lose some functionality.

Disable Macros

Enable Macros

More Info

Si vous avez suivi ces étapes et que l'application n'est toujours pas exécutée, communiquez avec votre PA



Partner Information Report

Report Year: 2013
Partner: june6 testing

6 June 2014

Partner Information

Link to your company's environmental or SmartWay web page:

Executive Officer's quote on your SmartWay participation: (500 characters max)

Description of your best investment in emissions or fuel saving technology: (3000 characters max)

Goal for SmartWay participation: (3000 characters max)

My company encourages other companies to join SmartWay to improve their efficiency by: (1000 characters max)

In addition to efficiency improvements, our company has benefitted from our SmartWay Partnership by: (1000 characters max)

My company conducts an internal quality assurance audit of our SmartWay data.

My company conducts a third party quality assurance audit of our SmartWay data.

Link to your SmartWay video:

Link to a picture of your SmartWay trailer.

Link to your most fuel efficient driver page!



Partner Information Report

Report Year: 2013
Partner: june6 testing

6 June 2014

Logo Qualification

Partnership Logo

- I have read the SmartWay Logo Use Guidelines webpage
- I have read the SmartWay Logo Graphics Standards and Usage Guide (on webpage)
- If I earn the right to use the SmartWay PARTNER Logo I agree to SmartWay's PARTNER Logo use guidelines. (on webpage)

I intend to use to use the SmartWay Partner Logo on:

- | | |
|---|--|
| <input type="checkbox"/> My website | <input type="checkbox"/> Company Letterhead |
| <input type="checkbox"/> Marketing materials | <input type="checkbox"/> Email Signature |
| <input type="checkbox"/> Internal company materials | <input type="checkbox"/> Flag |
| <input type="checkbox"/> Business Cards | <input type="checkbox"/> Company exhibit booth |
| <input type="checkbox"/> Advertising | <input type="checkbox"/> Posters/internal signage |
| <input type="checkbox"/> Apparel/hats | <input type="checkbox"/> Packaging (only per EPA approval) |
| <input type="checkbox"/> Briefings/presentations | <input type="checkbox"/> Other (specify) |

SmartWay TRACTOR Logo

- If my tractors meet the SmartWay designated specifications, send me the digital TRACTOR Logo files.
- If my tractors meet the SmartWay designated specifications, I agree to SmartWay's TRACTOR Logo use guidelines. (on web page)
- I intend to use the SmartWay Truck Logo on my tractors

Based on the guidelines, I intend to use the TRACTOR Logo on this number of eligible tractors.

SmartWay TRAILER Logo

- If my trailers meet the SmartWay designated specifications, send me the digital TRAILER Logo files.
- If my trailers meet the SmartWay designated specifications, I agree to SmartWay's TRAILER Logo use guidelines. (on web page)
- I intend to use the SmartWay Truck Logo on my trailers

Based on the guidelines, I intend to use the TRAILER Logo on this number of eligible tractors.



Suggestions Screen

Please answer Yes or No

- Did you use the Quick Start User Guide?
- Do you read the Tool Technical Documentation?
- Do you regularly visit the SmartWay website?

On a scale of 1 to 10, 10 being the best:

- How do you rate the SmartWay Tool?
- How do you rate the SmartWay User Guide?
- How do you rate the SmartWay Technical Document?
- How do you rate the SmartWay Website?
- How do you rate SmartWay support materials?

On a scale of 1 to 10, 10 meaning strongly agree:

- I understand the goals of the SmartWay program
- I understand how to participate in the program
- I understand and know how to find information on the SmartWay website
- I understand the SmartWay Tools
- I understand the SmartWay emission factor ranking system
- I understand the SmartWay Partnership logo guidelines
- I understand the SmartWay award criteria
- SmartWay provides good customer service
- My business experiences significant benefits by our participation in SmartWay
- I enjoy participating in SmartWay



Partner Information Report

Report Year: 2013
Partner: june6 testing

6 June 2014

Suggestions (continued)

What do you like about SmartWay?

What don't you like about SmartWay?

What does SmartWay do well?

What does SmartWay do poorly?

What keeps you in SmartWay?

How can SmartWay provide additional benefits to your business? (500 characters max)

What would you like to see changed in SmartWay?

What could SmartWay do to enhance your SmartWay experience?



Power Units Report
Report Year:

Partner:
Fleet:

May 11, 2014

Power Unit Inventory

Data Input Method

of Total Power Units

Engine Tier

Non-Tier
0
0+
1
1+
2
2+
3

Locomotive Unit Miles/Year

Unit Trains
Way Trains
Through Trains

Subtotal

-

Train Switching
Yard Switching

Subtotal

Total

-
-

Data Sources for this page:



Cars Report
Report Year:

Partner:
Fleet:

May 11, 2014

Railcar Miles

	Owned and Leased		Private		Totals			Railcar volumes (cubic feet) used in calculations
	Loaded	Empty	Loaded	Empty	Loaded	Empty	Total	
Box-Plain 40'					-	-	-	
Box-Plain 50' +					-	-	-	
Box Equipped					-	-	-	
Gondola Plain					-	-	-	
Gondola Equipped					-	-	-	
Hopper Covered					-	-	-	
Hopper Open Top - General Service					-	-	-	
Refrigerator Mechanical					-	-	-	
Refrigerated Non-Mechanical					-	-	-	
Flat TOFC/COFC					-	-	-	
Flat Multi-Level					-	-	-	
Flat General Service					-	-	-	
Flat All Other					-	-	-	
Tank Under 22,000 Gallons					-	-	-	
Tank Over 22,000 Gallons					-	-	-	
All Other Cars					-	-	-	
Work Equip & Company Freight					-	-	-	
No Payment Car-Miles					-	-	-	
Total	-	-	-	-	-	-	-	

Weighted-average Railcar Volume:
Truck-Equivalency Factor:



Mesures de réduction du carburant
Type d'outil : Multimodal

Année de rapport : 2013

May 23, 2014

Which activities did your company undertake in 2013 to reduce its fuel consumption and emissions (select all that apply):

- None
- Increased use of tractor aerodynamics (e.g. cab fairings, tank fairings)
- Increased use of anti-idling equipment (e.g. APUs, automatic engine shut-off)
- Increased use of trailer aerodynamics (e.g. side skirts, boat tails/rear fairings)
- Increased use of low-rolling resistance tires or single-wide tires
- Creation of a fuel management plan (e.g. FleetSmart's FM 101 training)
- Fuel-efficient driver training (e.g. FleetSmart's SmartDriver for Highway Trucking): If yes, please indicate the last training date:

- Accelerated tractor fleet turnover
- Increased use of lightweight trailers
- Increased use of alternative fuels/biofuels
- Improved routing
- Improved capacity utilization
- Increased use of electronic on-board devices to reduce fuel consumption
- Other – please indicate all applicable activities: