



Released January 12, 2017, by the National Agricultural Statistics Service (NASS), Agricultural Statistics Board, United States Department of Agriculture (USDA).

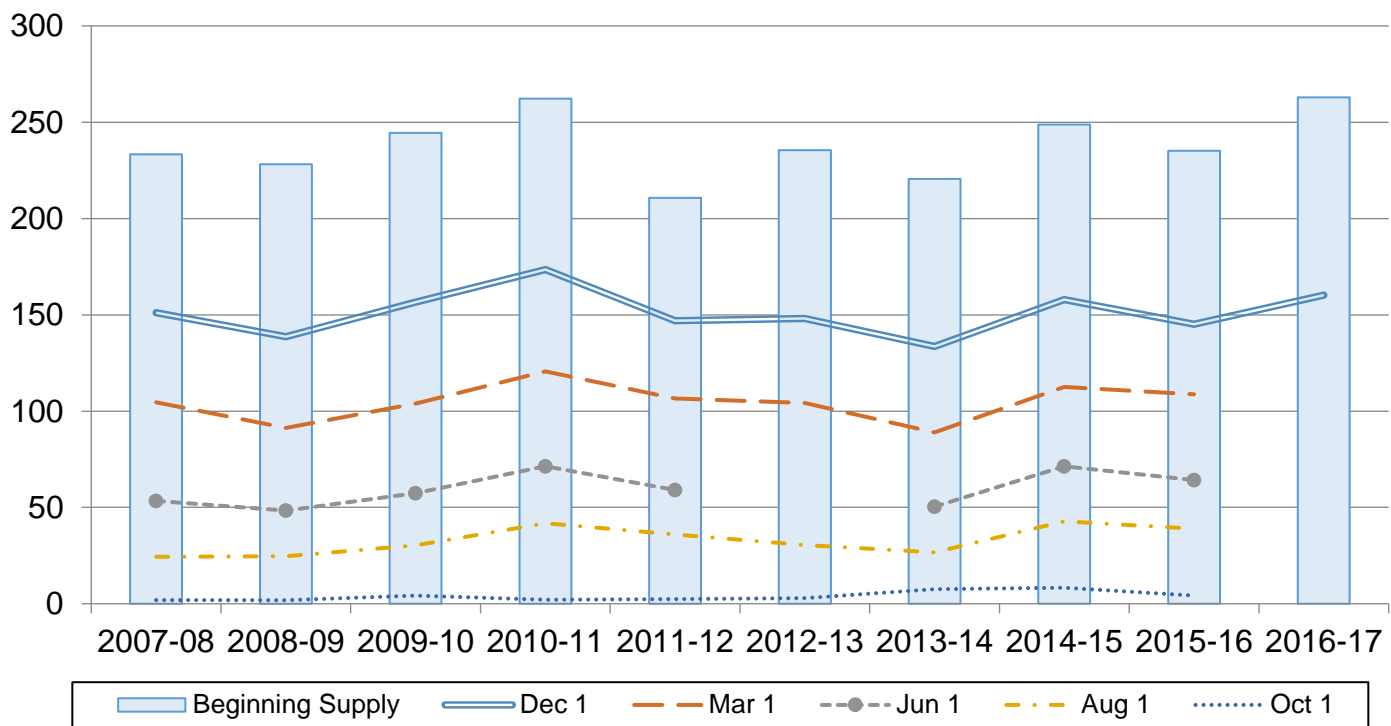
Rough Rice Stocks Up 10 Percent from December 2015

Rough rice stocks in all positions on December 1, 2016, totaled 160 million hundredweight (cwt), up 10 percent from the total on December 1, 2015. Stocks held on farms totaled 48.5 million cwt, and off-farm stocks totaled 112 million cwt. Long grain varieties accounted for 67 percent of the total rough rice, medium grain accounted for 31 percent, and short grain varieties accounted for 2 percent.

Milled rice stocks in all positions totaled 5.80 million cwt, down 7 percent from a year ago. Milled rice stocks were comprised of 3.54 million cwt of whole kernel rice and 2.26 million cwt of second heads, screenings, and brewers rice.

Rough Rice Stocks – United States

Million cwt



Rice Stocks by Position and Month – United States: 2015 and 2016 (Domestic Units)

Date	2015			2016		
	On farms	Off farms ¹	Total all positions	On farms	Off farms ¹	Total all positions
	(1,000 cwt)	(1,000 cwt)	(1,000 cwt)	(1,000 cwt)	(1,000 cwt)	(1,000 cwt)
Rough rice						
March 1	25,810	86,658	112,468	18,255	90,507	108,762
June 1	10,227	61,113	71,340	7,965	56,299	64,264
August 1	1,480	41,293	42,773	3,762	34,983	38,745
October 1 ²	70	8,238	8,308	60	4,215	4,275
December 1	43,245	101,804	145,049	48,495	111,734	160,229
Milled rice						
March 1	(X)	5,869	5,869	(X)	6,135	6,135
June 1	(X)	6,772	6,772	(X)	6,916	6,916
August 1	(X)	4,056	4,056	(X)	5,406	5,406
October 1 ²	(X)	3,003	3,003	(X)	1,470	1,470
December 1	(X)	6,245	6,245	(X)	5,795	5,795

(X) Not applicable.

¹ Includes stocks at mills, elevators, warehouses, ports, and in transit.

² California only.

Rice Stocks by Position and Month – United States: 2015 and 2016 (Metric Units)

[Data may not add to totals due to rounding]

Date	2015			2016		
	On farms	Off farms ¹	Total all positions	On farms	Off farms ¹	Total all positions
	(metric tons)	(metric tons)	(metric tons)	(metric tons)	(metric tons)	(metric tons)
Rough rice						
March 1	1,170,720	3,930,740	5,101,460	828,030	4,105,330	4,933,360
June 1	463,890	2,772,040	3,235,930	361,290	2,553,680	2,914,970
August 1	67,130	1,873,020	1,940,150	170,640	1,586,800	1,757,440
October 1 ²	3,180	373,670	376,840	2,720	191,190	193,910
December 1	1,961,560	4,617,750	6,579,310	2,199,700	5,068,170	7,267,870
Milled rice						
March 1	(X)	266,210	266,210	(X)	278,280	278,280
June 1	(X)	307,170	307,170	(X)	313,700	313,700
August 1	(X)	183,980	183,980	(X)	245,210	245,210
October 1 ²	(X)	136,210	136,210	(X)	66,680	66,680
December 1	(X)	283,270	283,270	(X)	262,860	262,860

(X) Not applicable.

¹ Includes stocks at mills, elevators, warehouses, ports, and in transit.

² California only.

Rice Stocks by Position – States and United States: December 1, 2015 and 2016

State	2015			2016		
	On farms	Off farms ¹	Total all positions	On farms	Off farms ¹	Total all positions
	(1,000 cwt)	(1,000 cwt)	(1,000 cwt)	(1,000 cwt)	(1,000 cwt)	(1,000 cwt)
Rough rice						
Arkansas	21,000	48,916	69,916	23,300	52,702	76,002
California	3,220	35,147	38,367	3,625	38,125	41,750
Louisiana	10,800	7,774	18,574	10,700	8,236	18,936
Mississippi	2,800	1,813	4,613	5,000	1,790	6,790
Missouri	(D)	(D)	7,278	(D)	(D)	7,244
Texas	(D)	(D)	6,301	(D)	(D)	9,507
Unallocated ²	5,425	8,154	-	5,870	10,881	-
United States	43,245	101,804	145,049	48,495	111,734	160,229
Milled rice						
Arkansas	(X)	2,227	2,227	(X)	1,919	1,919
California	(X)	2,196	2,196	(X)	2,239	2,239
Louisiana	(X)	(D)	(D)	(X)	(D)	(D)
Mississippi	(X)	(D)	(D)	(X)	(D)	(D)
Missouri	(X)	(D)	(D)	(X)	(D)	(D)
Texas	(X)	754	754	(X)	503	503
Unallocated ²	(X)	1,068	1,068	(X)	1,134	1,134
United States	(X)	6,245	6,245	(X)	5,795	5,795

- Represents zero.

(D) Withheld to avoid disclosing data for individual operations.

(X) Not applicable.

¹ Includes stocks at mills, elevators, warehouses, ports, and in transit.

² Unallocated includes State data withheld to avoid disclosure of individual operations.

**Rough Rice Stocks by Length of Grain in All Positions – States and United States:
December 1, 2015 and 2016**

State	Long		Medium		Short		Total	
	2015	2016	2015	2016	2015	2016	2015	2016
	(1,000 cwt)	(1,000 cwt)	(1,000 cwt)	(1,000 cwt)	(1,000 cwt)	(1,000 cwt)	(1,000 cwt)	(1,000 cwt)
California	(D)	(D)	35,193	38,088	(D)	(D)	38,367	41,750
Other States ¹	(D)	(D)	15,389	12,359	(D)	(D)	106,682	118,479
United States	91,814	106,700	50,582	50,447	2,653	3,082	145,049	160,229

(D) Withheld to avoid disclosing data for individual operations.

¹ Other States include Arkansas, Louisiana, Mississippi, Missouri, and Texas.

**Milled Rice Stocks by Length of Grain in All Positions – States and United States:
December 1, 2015 and 2016**

State	Whole kernels (head rice)							
	Long		Medium		Short		Total	
	2015	2016	2015	2016	2015	2016	2015	2016
	(1,000 cwt)	(1,000 cwt)	(1,000 cwt)	(1,000 cwt)	(1,000 cwt)	(1,000 cwt)	(1,000 cwt)	(1,000 cwt)
California	(D)	(D)	1,023	886	(D)	(D)	1,102	985
Other States ¹	(D)	(D)	256	131	(D)	(D)	2,968	2,550
United States	2,716	2,453	1,279	1,017	75	65	4,070	3,535
State	Broken kernels							
	Second heads		Screenings ²		Brewers		Total	
	2015	2016	2015	2016	2015	2016	2015	2016
	(1,000 cwt)	(1,000 cwt)	(1,000 cwt)	(1,000 cwt)	(1,000 cwt)	(1,000 cwt)	(1,000 cwt)	(1,000 cwt)
California	(D)	(D)	-	-	(D)	(D)	1,094	1,254
Other States ¹	(D)	(D)	56	82	(D)	(D)	1,081	1,006
United States	1,385	1,777	56	82	734	401	2,175	2,260

- Represents zero.

(D) Withheld to avoid disclosing data for individual operations.

¹ Other States include Arkansas, Louisiana, Mississippi, Missouri, and Texas.

² Screenings included with second heads in California.

Rough Rice Stocks by Length of Grain in All Positions – California: October 1, 2015 and 2016

State	Long		Medium		Short		Total	
	2015	2016	2015	2016	2015	2016	2015	2016
	(1,000 cwt)	(1,000 cwt)	(1,000 cwt)	(1,000 cwt)	(1,000 cwt)	(1,000 cwt)	(1,000 cwt)	(1,000 cwt)
California	(D)	(D)	7,892	3,732	(D)	(D)	8,308	4,275

(D) Withheld to avoid disclosing data for individual operations.

Milled Rice Stocks by Length of Grain in All Positions – California: October 1, 2015 and 2016

State	Whole kernels (head rice)							
	Long		Medium		Short		Total	
	2015	2016	2015	2016	2015	2016	2015	2016
	(1,000 cwt)	(1,000 cwt)	(1,000 cwt)	(1,000 cwt)	(1,000 cwt)	(1,000 cwt)	(1,000 cwt)	(1,000 cwt)
California	(D)	(D)	1,430	389	(D)	(D)	1,463	426
State	Broken kernels							
	Second heads		Screenings ¹		Brewers		Total	
	2015	2016	2015	2016	2015	2016	2015	2016
	(1,000 cwt)	(1,000 cwt)	(1,000 cwt)	(1,000 cwt)	(1,000 cwt)	(1,000 cwt)	(1,000 cwt)	(1,000 cwt)
California	(D)	(D)	-	-	(D)	(D)	1,540	1,044

- Represents zero.

(D) Withheld to avoid disclosing data for individual operations.

¹ Screenings included with second heads.

Rice Stocks by Position – States and United States: August 1, 2016

State	August 1, 2016		
	On farms	Off farms ¹	Total all positions
	(1,000 cwt)	(1,000 cwt)	(1,000 cwt)
Rough rice			
Arkansas	2,500	17,818	20,318
California	387	11,206	11,593
Louisiana	750	2,393	3,143
Mississippi	(D)	(D)	500
Missouri	(D)	(D)	1,021
Texas	(D)	(D)	2,170
Unallocated ²	125	3,566	-
United States	3,762	34,983	38,745
Milled rice			
Arkansas	(X)	1,537	1,537
California	(X)	2,703	2,703
Louisiana	(X)	(D)	(D)
Mississippi	(X)	(D)	(D)
Missouri	(X)	(D)	(D)
Texas	(X)	477	477
Unallocated ²	(X)	689	689
United States	(X)	5,406	5,406

- Represents zero.

(D) Withheld to avoid disclosing data for individual operations.

(X) Not applicable.

¹ Includes stocks at mills, elevators, warehouses, ports, and in transit.

² Unallocated includes State data withheld to avoid disclosure of individual operations.

Rice Stocks by Position – States and United States: June 1, 2016 and March 1, 2016

State	June 1, 2016			March 1, 2016		
	On farms	Off farms ¹	Total all positions	On farms	Off farms ¹	Total all positions
	(1,000 cwt)	(1,000 cwt)	(1,000 cwt)	(1,000 cwt)	(1,000 cwt)	(1,000 cwt)
Rough rice						
Arkansas	5,200	31,152	36,352	11,100	48,896	59,996
California	1,060	17,309	18,369	1,815	28,080	29,895
Louisiana	980	3,344	4,324	1,700	5,573	7,273
Mississippi	(D)	(D)	889	1,600	1,367	2,967
Missouri	(D)	(D)	1,796	(D)	(D)	4,105
Texas	245	2,289	2,534	(D)	(D)	4,526
Unallocated ²	480	2,205	-	2,040	6,591	-
United States	7,965	56,299	64,264	18,255	90,507	108,762
Milled rice						
Arkansas	(X)	1,961	1,961	(X)	2,199	2,199
California	(X)	2,513	2,513	(X)	2,646	2,646
Louisiana	(X)	(D)	(D)	(X)	(D)	(D)
Mississippi	(X)	(D)	(D)	(X)	(D)	(D)
Missouri	(X)	(D)	(D)	(X)	(D)	(D)
Texas	(X)	519	519	(X)	685	685
Unallocated ²	(X)	1,923	1,923	(X)	605	605
United States	(X)	6,916	6,916	(X)	6,135	6,135

- Represents zero.

(D) Withheld to avoid disclosing data for individual operations.

(X) Not applicable.

¹ Includes stocks at mills, elevators, warehouses, ports, and in transit.

² Unallocated includes State data withheld to avoid disclosure of individual operations.

Rough Rice Stocks in All Positions by Length of Grain and Month – States and United States: 2016

Date and State	Long (1,000 cwt)	Medium (1,000 cwt)	Short (1,000 cwt)	Total (1,000 cwt)
August 1				
California	(D)	10,755	(D)	11,593
Other States ¹	(D)	7,592	(D)	27,152
United States	19,801	18,347	597	38,745
June 1				
California	(D)	17,047	(D)	18,369
Other States ¹	(D)	9,913	(D)	45,895
United States	36,305	26,960	999	64,264
March 1				
California	(D)	27,728	(D)	29,895
Other States ¹	(D)	12,990	(D)	78,867
United States	66,307	40,718	1,737	108,762

(D) Withheld to avoid disclosing data for individual operations.

¹ Other States include Arkansas, Louisiana, Mississippi, Missouri, and Texas.

Milled Rice Stocks by Length of Grain in All Positions – States and United States: August 1, 2016

State	Whole kernels (head rice)			
	Long (1,000 cwt)	Medium (1,000 cwt)	Short (1,000 cwt)	Total (1,000 cwt)
California	(D)	1,191	(D)	1,235
Other States ¹	(D)	133	(D)	2,151
United States	2,022	1,324	40	3,386
State	Broken kernels			
	Second heads (1,000 cwt)	Screenings ² (1,000 cwt)	Brewers (1,000 cwt)	Total (1,000 cwt)
California	(D)	-	(D)	1,468
Other States ¹	(D)	33	(D)	552
United States	1,436	33	551	2,020

- Represents zero.

(D) Withheld to avoid disclosing data for individual operations.

¹ Other States include Arkansas, Louisiana, Mississippi, Missouri, and Texas.

² Screenings included with second heads in California.

Milled Rice Stocks by Length of Grain in All Positions – States and United States: June 1, 2016

State	Whole kernels (head rice)			
	Long (1,000 cwt)	Medium (1,000 cwt)	Short (1,000 cwt)	Total (1,000 cwt)
California	(D)	870	(D)	914
Other States ¹	(D)	160	(D)	3,620
United States	3,463	1,030	41	4,534
State	Broken kernels			
	Second heads (1,000 cwt)	Screenings ² (1,000 cwt)	Brewers (1,000 cwt)	Total (1,000 cwt)
California	(D)	-	(D)	1,599
Other States ¹	(D)	70	(D)	783
United States	1,634	70	678	2,382

- Represents zero.

(D) Withheld to avoid disclosing data for individual operations.

¹ Other States include Arkansas, Louisiana, Mississippi, Missouri, and Texas.

² Screenings included with second heads in California.

Milled Rice Stocks by Length of Grain in All Positions – States and United States: March 1, 2016

State	Whole kernels (head rice)			
	Long (1,000 cwt)	Medium (1,000 cwt)	Short (1,000 cwt)	Total (1,000 cwt)
California	(D)	1,304	(D)	1,368
Other States ¹	(D)	155	(D)	2,769
United States	2,616	1,459	62	4,137
State	Broken kernels			
	Second heads (1,000 cwt)	Screenings ² (1,000 cwt)	Brewers (1,000 cwt)	Total (1,000 cwt)
California	(D)	-	(D)	1,278
Other States ¹	(D)	61	(D)	720
United States	1,550	61	387	1,998

- Represents zero.

(D) Withheld to avoid disclosing data for individual operations.

¹ Other States include Arkansas, Louisiana, Mississippi, Missouri, and Texas.

² Screenings included with second heads in California.

Statistical Methodology

Survey Procedures: The rice stocks estimates in this report are based on surveys conducted during the first two weeks of December. Separate surveys were conducted to obtain the on-farm and off-farm estimates. The on-farm stocks survey is a probability survey based on a sampling procedure that ensures all operations storing rice in the United States have a chance to be selected. These producers were asked to provide the total quantities of grain stored on their operations as of December 1, 2016 regardless of ownership. Off-farm stocks are a census of all known rice storage facilities. An effort is made to obtain reports from all off-farm facilities. Estimates are made for missing facilities to assure complete coverage.

Estimating Procedures: On-farm and off-farm survey data are reviewed at the State and National levels for reasonableness, consistency with historical estimates, and current crop size. After estimates are made for on-farm and off-farm rice stocks, the total of these two are combined and evaluated using the balance sheet approach. This method utilizes other sources of data to check the reasonableness of the stocks estimates. Estimates of production, exports, and millings are reviewed to make sure beginning stocks, production, utilization, and ending stocks are within reasonable balance and present the best possible estimate of stocks.

Revision Policy: On-farm and off-farm stocks are subject to revision in the quarter following initial publication and again in the following December 1 *Rice Stocks* report published in January each year. Revisions can be made when late reports are received, errors are detected in reporting and calculating, and when production estimates are revised. Estimates will also be reviewed after data from the 5-year Census of Agriculture are available. No revisions to these years will be made after that date.

Reliability: Reliability of the on-farm and off-farm stocks must be treated separately because the survey designs for the two surveys are drastically different. The on-farm stocks estimates are subject to sampling variability because all operations holding on-farm stocks are not included in the sample.

Survey indications are also subject to non-sampling errors such as omission, duplication, imputation for missing data, and mistakes in reporting, recording, and processing the data. Off-farm, as well as on-farm stocks, are subject to these types of errors. These errors cannot be measured directly, but they are minimized through rigid quality controls in the data collection process and a careful review of all reported data for consistency and reasonableness.

Information Contacts

Listed below are the commodity statisticians in the Crops Branch of the National Agricultural Statistics Service to contact for additional information. E-mail inquiries may be sent to nass@nass.usda.gov

Lance Honig, Chief, Crops Branch	(202) 720-2127
Anthony Prillaman, Head, Field Crops Section	(202) 720-2127
Tony Dahlman – Oats, Soybeans	(202) 690-3234
Chris Hawthorn – Corn, Flaxseed, Proso Millet	(202) 720-9526
James Johanson – County Estimates, Hay	(202) 690-8533
Scott Matthews – Crop Weather, Barley.....	(202) 720-7621
Sammy Neal– Peanuts, Rice	(202) 720-7688
Jean Porter – Rye, Wheat	(202) 720-8068
Bianca Pruneda – Cotton, Cotton Ginnings, Sorghum.....	(202) 720-5944
Travis Thorson – Sunflower, Other Oilseeds.....	(202) 720-7369

Access to NASS Reports

For your convenience, you may access NASS reports and products the following ways:

- All reports are available electronically, at no cost, on the NASS web site: www.nass.usda.gov
- Both national and state specific reports are available via a free e-mail subscription. To set-up this free subscription, visit www.nass.usda.gov and click on “National” or “State” in upper right corner above “search” box to create an account and select the reports you would like to receive.

For more information on NASS surveys and reports, call the NASS Agricultural Statistics Hotline at (800) 727-9540, 7:30 a.m. to 4:00 p.m. ET, or e-mail: nass@nass.usda.gov.

The U.S. Department of Agriculture (USDA) prohibits discrimination against its customers, employees, and applicants for employment on the basis of race, color, national origin, age, disability, sex, gender identity, religion, reprisal, and where applicable, political beliefs, marital status, familial or parental status, sexual orientation, or all or part of an individual's income is derived from any public assistance program, or protected genetic information in employment or in any program or activity conducted or funded by the Department. (Not all prohibited bases will apply to all programs and/or employment activities.)

If you wish to file a Civil Rights program complaint of discrimination, complete the [USDA Program Discrimination Complaint Form](#) (PDF), found online at http://www.ascr.usda.gov/complaint_filing_cust.html, or at any USDA office, or call (866) 632-9992 to request the form. You may also write a letter containing all of the information requested in the form. Send your completed complaint form or letter to us by mail at U.S. Department of Agriculture, Director, Office of Adjudication, 1400 Independence Avenue, S.W., Washington, D.C. 20250-9410, by fax (202) 690-7442 or email at program.intake@usda.gov.



United States Department of Agriculture

USDA's
93rd
Annual

Agricultural
Outlook Forum

A New Horizon: The Future of Agriculture

Early Registration
\$450 ends
January 26, 2017
\$500 after
January 27, 2017

February 23-24, 2017
Crystal Gateway Marriott Hotel
Arlington, Virginia

Register: www.usda.gov/oce/forum