



## **School Survey on Crime and Safety (SSOCS) 2018 & 2020**

**OMB #1850-0761 v.15**

### Appendix A – Communication Materials

National Center for Education Statistics  
Institute of Education Sciences  
U.S. Department of Education

March 2017  
revised April 2018

# Contents

District Research Application Cover Letter (Districts in SSOCS) - <b>APPROVED</b> .....	1
District Research Application Cover Letter (Districts in NTPS & SSOCS) - <b>APPROVED</b> .....	2
2017–18 SSOCS Generic Research Application - <b>APPROVED</b> .....	3
Special Contact District Approval Form (SSOCS) - <b>APPROVED</b> .....	9
Special Contact District Affidavit of Nondisclosure - <b>APPROVED</b> .....	10
2018 SSOCS Trifold Brochure.....	11
Example of Formatted SSOCS Communications Letter to Superintendents.....	13
Advance Letter to District Superintendent.....	14
Advance Letter to Chief State School Officer.....	15
Advance Letter to Principal.....	16
Advance Letter to Principal – Special District, Status Pending.....	17
Advance Letter to Principal – Special District, Status Approved.....	18
Postcard to Principal – Special District Approval.....	19
Initial Letter to Principal - Paper, No Incentive.....	20
Initial Letter to Principal - Paper, Incentive.....	21
Initial Letter to Principal - Web, No Incentive.....	22
Initial Letter to Principal - Web, Incentive.....	23
First Reminder Letter to Principal – Paper.....	24
First Reminder Letter to Principal – Internet.....	25
Second Reminder Letter to Principal – Paper.....	26
Second Reminder Letter to Principal - Internet (first paper questionnaire).....	27
Third Reminder Letter to Principal.....	28
Letter to Principal – Replacement Questionnaire.....	29
Thank You Letter to District.....	30
Thank You Letter to School.....	31
Initial e-mail to principals - Paper, Incentive.....	32
Initial e-mail to principals - Paper, No incentive.....	33
Initial e-mail to principals - Web, Incentive.....	34
Initial e-mail to principals - Web, No incentive.....	35
First follow-up e-mail to principals – Paper.....	36
First follow-up e-mail to principals – Web.....	37
Second follow-up e-mail to principals – Paper.....	38
Second follow-up e-mail to principals – Web.....	39
Third follow-up e-mail reminder to nonresponding schools and thank you e-mail to responding schools – Paper.....	40
Third follow-up e-mail reminder to nonresponding schools and thank you e-mail to responding schools – Web.....	41
Fourth follow-up e-mail.....	42
Fifth follow-up e-mail.....	42
Sixth follow-up e-mail.....	44
SSOCS Web Instrument Text.....	45
SSOCS Webpage Text.....	55

District Research Application Cover Letter (Districts in SSOCS) - APPROVED



U.S. DEPARTMENT OF EDUCATION  
INSTITUTE OF EDUCATION SCIENCES

NATIONAL CENTER FOR EDUCATION STATISTICS

[Name]

[date]

[Position, Department]

[School District]

[Street Address]

[City, State, Zip]

Dear [District Contact Name]

The National Center for Education Statistics (NCES) of the U.S. Department of Education is requesting approval to conduct the **School Survey on Crime and Safety (SSOCS) 2018** in some of your district's schools during the 2017-18 school year.

SSOCS is administered on a recurring basis by the U.S. Census Bureau on behalf of NCES. Its data are crucial in helping legislators and education leaders make informed decisions to provide a safe school environment. By participating in this survey, you will ensure that information about your district's schools is included in those decisions.

[For districts where sample has been drawn, insert: "From your district, XX schools were sampled for SSOCS."] **No student, faculty, or classroom time is involved in this survey.**

Thank you for your consideration of the research application for SSOCS 2018. The enclosed application and materials describe the purposes, survey topics, sample size, and respondent burden for SSOCS. The SSOCS 2016 questionnaire is also included for your reference. Only minor changes are proposed for the 2018 questionnaire. In addition, a District Approval Form is enclosed for you to indicate whether your district has approved participation in SSOCS. Please return the form as soon as possible to the contact listed on the form.

If you have any questions about SSOCS or the research application, please contact the study's district research application team, by e-mail at [[email](mailto:[email]@westat.com)]@westat.com or by telephone at 1-800-[phone]. You can find additional information about SSOCS and results from prior SSOCS administrations at <http://www.nces.ed.gov/surveys/ssocs>.

Sincerely,

Rachel Hansen  
Project Director  
School Survey on Crime and Safety  
National Center for Education Statistics (NCES)  
PCP, 550 12th St., SW, 4th floor, Room 4012  
Washington, DC 20202

Enclosures

District Research Application Cover Letter (Districts in NTPS & SSOCS) - APPROVED



U.S. DEPARTMENT OF EDUCATION  
INSTITUTE OF EDUCATION SCIENCES

NATIONAL CENTER FOR EDUCATION STATISTICS

[Name]  
[Position, Department]  
[School District]  
[Street Address]  
[City, State, Zip]

[date]

Dear [District Contact Name]

The National Center for Education Statistics (NCES) of the U.S. Department of Education is requesting approval to conduct the National Teacher and Principal Survey (NTPS) 2017-18 and the School Survey on Crime and Safety (SSOCS) 2018 in some of your district's schools during the 2017-18 school year.

NTPS and SSOCS are administered by the U.S. Census Bureau on behalf of NCES on a recurring basis. The collected data are crucial in helping legislators and education leaders make informed decisions to improve education. By participating in these surveys, you will ensure that information about your district's schools, principals, and teachers is included in those decisions. **No student or classroom time is involved in either survey.**

*[For districts where sample has been drawn, insert: "From your district, XX of schools were sampled for NTPS and XX of schools were sampled for SSOCS."]* NCES recognizes the increased burden on schools asked to respond to multiple surveys. NTPS and SSOCS are working together to minimize as much as possible the number of schools asked to participate in both surveys.

We appreciate your consideration of the research applications for these important surveys. The enclosed applications and materials describe the purposes, survey topics, sample sizes, and respondent burden for NTPS and SSOCS. The applications and materials for each survey are provided separately. If you have any questions about the research applications, please contact the studies' district research application team, by e-mail at [[email](mailto:[email]@westat.com)]@westat.com or by telephone at 1-800-[phone].

Sincerely,

Amy Ho  
Project Director  
National Teacher and Principal Survey  
National Center for Education Statistics (NCES)  
PCP, 550 12th St., SW, 4th floor, Room 4014  
Washington, DC 20202

Rachel Hansen  
Project Director  
School Survey on Crime and Safety  
National Center for Education Statistics (NCES)  
PCP, 550 12th St., SW, 4th floor, Room 4012  
Washington, DC 20202

Enclosures

## 2017–18 SSOCS Generic Research Application - APPROVED

### Contact

Applicant: Rachel Hansen  
Title: Project Director  
Affiliation: National Center for Education Statistics (NCES)  
Institute of Education Sciences (IES)  
United States Department of Education  
Address: PCP, 550 12<sup>th</sup> Street, SW, 4<sup>th</sup> floor, Room 4012  
Washington, DC 20202  
Phone: (202) 245-7082  
E-mail: [school.crime@ed.gov](mailto:school.crime@ed.gov)

### SSOCS Research Application Contact:

District Research Application Team  
1-800-[phone]  
[email]@westat.com

**Title of Study:** 2017–18 School Survey on Crime and Safety (SSOCS:2018)

**Anticipated Start Date:** February 2018

**Anticipated End Date:** June 2018

### **Purpose the Study:**

The School Survey on Crime and Safety (SSOCS) is conducted by the National Center for Education Statistics (NCES), part of the Institute of Education Sciences (IES), within the United States Department of Education, in order to collect extensive data on issues of crime and safety in U.S. public primary, middle, high, and combined-grade schools. The survey asks school principals about topics such as incidents of crime and violence; disciplinary actions; discipline problems; use of security measures; school policies and practices related to school crime and violence; violence prevention programs and activities; the presence and role of school security staff; parent and community involvement; staff training; availability of mental health services; and other school characteristics. NCES is authorized to conduct SSOCS by the Education Sciences Reform Act of 2002 (ESRA 2002, 20 U.S.C. §9543).

SSOCS is one of the nation's few sources of national information on school crime and safety, as reported by principals in U.S. public schools. SSOCS was first conducted during the 1999–2000 school year and was conducted again during the 2003–04, 2005–06, 2007–08, 2009–10, and 2015–16 school years. Many topics in the prior administrations are repeated in the 2017–18 questionnaire to enable comparisons between the seven survey periods. Because data are collected on a recurring basis, it is possible to assess whether our nation's schools are becoming safer for students and educators. By participating, information from schools in your district allows for comparisons among different types of schools across the nation that are valuable to governing agencies, policy makers, educators and the general public.

### **Significance of the Study and Benefits of Participation:**

SSOCS is the only recurring federal survey that collects detailed information on the incidence, frequency, seriousness, and nature of violence affecting students and school personnel, as well as other indices of school safety from the schools' perspective. As such, it fills an important gap in data collected by NCES and other agencies. With the help of survey participants, NCES is able to produce national estimates of school crime and discipline, and of school policies and programs concerning crime and safety. These data are crucial in helping legislators and education leaders make informed decisions to provide a safe school environment. The ability of NCES to provide this important information is contingent upon the voluntary participation of sampled schools; participation of these schools is dependent upon their districts' approval. Because your district and its schools represent themselves and many others like them, their participation is vital for producing high quality information. By participating in this survey, you will ensure that information about your districts' schools is included in those important decisions.

### **Hypotheses and Measurement:**

The SSOCS questionnaire is divided into 10 broad research objectives, each with a series of measurement items addressing a specific research question. Each research objective is briefly stated below in terms of the crime and safety

issues in need of measurement, as well as the research questions we are seeking to answer. These measurement items and corresponding research questions are:

- I. Frequency of Crime and Violence at School: frequency and nature of crime at public schools**
  - a. What is the number of incidents, by type of crime?
  - b. What are the characteristics of those incidents?
    - i. How many incidents were reported to police?
  - c. What is the number of hate-crime incidents?
    - i. What biases motivated these incidents?
  - d. How many arrests were made at school?
  - e. How many schools report violent deaths?
  - f. How many schools report school shootings?
  - g. How many schools report disruptions for violent threats?
- II. Number of Incidents: frequency and nature of discipline problems and disorder at public schools**
  - a. What types of discipline problems and disorder occur at public schools?
  - b. How serious are the problems?
- III. Disciplinary Problems and Actions: disciplinary actions used by public schools**
  - a. What types of disciplinary actions were available to principals?
  - b. How many disciplinary actions were taken, by type of action and offense?
- IV. School Practices and Policies: practices to prevent/reduce crime and violence at public schools**
  - a. How do schools monitor student behavior?
  - b. How do schools control student behavior?
  - c. How do schools monitor and secure the physical grounds?
  - d. How do schools limit access to the school?
  - e. How do schools plan and practice procedures for emergencies?
- V. School Security Staff: involvement of law enforcement at public schools**
  - a. Do schools have sworn law enforcement officers present on a regular basis?
    - i. How often are they available and at what times?
    - ii. What activities do they participate in?
    - iii. How many are present at the school?
    - iv. How are sworn law enforcement officers armed?
  - b. Is there written documentation outlining the roles and responsibilities of law enforcement in schools?
  - c. Do schools have security guards or personnel other than law enforcement?
- VI. School Mental Health Services: availability and access to student mental health services at public schools**
  - a. Are mental health services, such as diagnostic assessment and treatment, available to students?
    - i. Where are those services available?
  - b. What factors limit a school's efforts to provide mental health services to students?
- VII. School Programs: formal programs designed to prevent/reduce crime and violence at public schools**
  - a. Which programs target students, teachers, parents, and other community members?
  - b. What are the characteristics of the programs?
  - c. Do schools have threat assessment teams?
    - i. How often do they formally meet?
  - d. What student groups promote acceptance of student diversity?
  - e. What training is provided to staff?
- VIII. Parent and Community Involvement at School: efforts used by public schools to prevent/reduce crime and violence involving various stakeholders (e.g., law enforcement, parents, juvenile justice agencies, mental health agencies, social services, and the business community)**
  - a. In what activities are stakeholders involved?
  - b. How much are stakeholders involved?
- IX. Limitations on Crime Prevention: the problems principals encounter in preventing/reducing crime and violence in public schools**
- X. School Characteristics which are related to the research questions above**
  - a. What are the demographic characteristics of schools?
  - b. What are the characteristics of the student population?
  - c. What is the average student/teacher ratio?
  - d. What are the general measures of school climate, such as truancy or student mobility?

## Questionnaire:

A copy of the 2016 SSOCS questionnaire is enclosed for your reference. Only minor changes are proposed for the 2018 questionnaire. The sections in the 2018 questionnaire, outlined below, are the same as those in the 2016 questionnaire. Additional information about SSOCS and results from prior SSOCS administrations is available at <http://nces.ed.gov/surveys/ssocs>.

The SSOCS:2018 questionnaire consists of the following sections:

- School practices and programs;
- Parent and community involvement at school;
- School security staff;
- School mental health services;
- Staff training;
- Limitations on crime prevention;
- Frequency of crime and violence at school;
- Number of incidents;
- Disciplinary problems and actions; and
- School characteristics: 2017–18 school year.

## Methodology and Sampling:

The U.S. Census Bureau collects the SSOCS data on behalf of NCES. SSOCS is a self-administered survey that is offered to respondents primarily through a mail questionnaire. As part of an effort to increase survey response rates, subject to approval, a random sample of respondents will be offered an online version of the survey in 2018 and a random sample of schools will receive a prepaid gift card in the initial survey package. Principals, or the school staff most knowledgeable about school crime and policies for a safe environment, complete the survey and return it directly to the U.S. Census Bureau. School districts and state educational agencies are not involved in the data collection in any way. Depending on the school's data collection system, some principals may seek input from other school staff, such as school resource officers or guidance counselors. The survey does not require the participation of either students or faculty. No classroom time is involved in the completion of this survey.

SSOCS provides aggregate estimates for public schools across the nation. A stratified sample design is used to select approximately 4,500 U.S. public schools for SSOCS:2018. The sample is designed to provide national estimates of primary, middle, high, and combined-grade schools taking into account the level of instruction, type of locale (urbanicity), and size of the student enrollment.

The sampling frame for SSOCS is derived from the Common Core of Data (CCD), the universe of public schools supplied annually by state educational agencies to NCES. Only public schools in the 50 states and the District of Columbia are included in the SSOCS sampling frame. Certain types of schools are excluded, including special education schools, vocational schools, alternative schools (e.g., adult continuing education schools and remedial schools), newly closed schools, home schools, virtual schools, ungraded schools, schools with high grades of kindergarten or lower, and schools run by the Bureau of Indian Education. Regular public schools, charter schools, and schools that have partial or total magnet programs are included in the frame. For sample allocation purposes, strata are defined by instructional level, type of locale (urbanicity), and enrollment size. Both percent minority enrollment and region are used as sorting variables in the sample selection process to induce implicit stratification.

## Data Collection:

The 2017–18 SSOCS data collection will begin in February of 2018. The U.S. Census Bureau, acting as a contractor for NCES, will handle the data collection. Sampled schools will receive a letter notifying them of the survey in February 2018. Within a week of receiving the advance letter notifying them of the survey, the principals of the sampled schools will be sent the SSOCS questionnaire, and will be asked to return the questionnaire within two weeks. If the surveys are not returned or items are left incomplete, the school may receive follow-up telephone calls and emails. All follow-up data collection activities will end in June 2018. School districts and state education agencies are not involved in the data collection in any way, nor does the survey require the participation of students or faculty. Completed questionnaires are sent directly back to the U.S. Census Bureau.

<b>SSOCS:2018 timetable</b>	
Questionnaires mailed to principals	February 2018
Questionnaires due from principals	March 2018
Phone and email follow-up with non-responders begins	March 2018

**Response Burden:**

SSOCS relies on the voluntary participation of schools. The quality of national estimates is dependent on the level of respondent participation. The data provided by individual schools are combined with the information provided by other schools in statistical reports to present estimates of school crime and discipline, and of school policies and programs concerning crime and safety in schools nationwide. Every effort is made to create questionnaires that collect in-depth data without putting an undue burden on the respondent. The response burden for the survey is estimated to be 52 minutes per school.

SSOCS does not require the participation of either students or faculty. The recruitment materials and questionnaire clearly state that SSOCS:2018 is a voluntary survey. The materials also state that the data will only be reported in statistical summaries that preclude the identification of any individual principal or school participating in the survey.

**Analysis and release of information:**

The information collected in the 2017–18 SSOCS will be released in several ways. Many of the estimates will be included in statistical analysis reports published by NCES. In addition, the major findings will be included on the NCES website.

NCES allows researchers to access the data through restricted-use licensing for additional analyses. Only users who have official clearance from NCES may have access to the restricted-use data files. The data will be made available to the public as soon as possible after data collection. A public use dataset will be made available to the public on the Department of Education web site. In compliance with NCES confidentiality procedures, the public use dataset will not contain any information that can be used to identify an individual school or the state or district in which the school is located.

**Benefit to your school district:**

The U.S. Department of Education recognizes that safe schools are essential for learning: without a safe and secure environment, teachers cannot teach and students cannot learn. Effective data collection that encourages a high level of participation, and clear and timely analysis and presentation of the data, provide educators with a powerful set of tools for achieving the goal of school safety by providing accurate, up-to-date information about school crime and safety. This information is crucial in helping legislators and education leaders make informed decisions to provide a safe school environment. The ability of NCES to provide this important information is contingent upon the voluntary participation of sampled schools, and participation of these schools is dependent upon their districts' approval. Because your district and its schools represent themselves and many others like them, their participation is vital for producing high quality information. By participating in this survey, you will ensure that information about your districts' schools is included in those important decisions.

**Confidentiality:**

Data security and confidentiality protection procedures have been put in place for SSOCS:2018 to ensure that all NCES contractors and agents working on SSOCS:2018 comply with all privacy requirements including, as applicable: the Inter-agency agreement with NCES for this study; *Privacy Act of 1974* (5 U.S.C. §552a); *Privacy Act Regulations* (34 CFR Part 5b); *Computer Security Act of 1987*; *U.S.A. Patriot Act of 2001* (P.L. 107-56); *Education Sciences Reform Act of 2002* (ESRA 2002, 20 U.S.C. §9573); *Confidential Information Protect and Statistical efficiency Act of 2002*; *E-Government Act of 2002*, Title V, Subtitle A; *Cybersecurity Enhancement Act of 2015* (6 U.S.C. §151); the U.S. Department of Education General Handbook for Information Technology Security General Support Systems and Major Applications Inventory Procedures (March 2005); the U.S. Department of Education Incident Handling Procedures (February 2009); the U.S. Department of Education, ACS Directive OM: 5-101, Contractor Employee Personnel Security Screenings; NCES Statistical Standards; and all new legislation that impacts the data collected through the inter-agency agreement for this study.

The U.S. Census Bureau will collect data under an interagency agreement with NCES, and maintain the individually identifiable questionnaires per the security plan, including:

1. Provisions for data collection in the field;
2. Provisions to protect the data-coding phase required before machine processing;
3. Provisions to safeguard completed survey documents;
4. Authorization procedures to access or obtain files containing identifying information; and
5. Provisions to remove printouts and other outputs that contain identification information from normal operation. Such materials will be maintained in secured storage areas and will be securely destroyed as soon as practical.

U.S. Census Bureau will comply with the Department of Education's IT security policy requirements as set forth in the



Handbook for Information Assurance Security Policy and related procedures and guidance, as well as IT security requirements in the Federal Information Security Management Act (FISMA), Federal Information Processing Standards (FIPS) publications, Office of Management and Budget (OMB) Circulars, and the National Institute of Standards and Technology (NIST) standards and guidance. All data products and publications will also adhere to: the revised NCES Statistical Standards, as described at the website: <http://nces.ed.gov/statprog/2012/>.

By law (20 U.S.C. §9573), a violation of the confidentiality restrictions is a felony, punishable by imprisonment of up to 5 years and/or a fine of up to \$250,000. All government or contracted staff working on the SSOCS study and having access to the data are required to sign an NCES Affidavit of Nondisclosure and have received public-trust security clearance.

From the initial contact with the participants in this survey through all of the follow-up efforts, potential survey respondents will be informed that (a) the U.S. Census Bureau administers SSOCS on behalf of NCES; (b) NCES is authorized to conduct SSOCS by the Education Sciences Reform Act of 2002 (ESRA 2002, 20 U.S.C. §9543); (c) all of the information they provide may be used only for statistical purposes and may not be disclosed, or used, in identifiable form for any other purpose except as required by law (20 U.S.C. §9573 and 6 U.S.C. §151); and that their participation is voluntary.

The following language will be included in respondent contact materials and on data collection instruments:

*All of the information you provide may be used only for statistical purposes and may not be disclosed, or used, in identifiable form for any other purpose except as required by law (20 U.S.C. §9573 and 6 U.S.C. §151).*

According to the Paperwork Reduction Act of 1995, no persons are required to respond to a collection of information unless it displays a valid OMB control number. The valid OMB control number for this voluntary information collection is 1850-0761. The time required to complete this information collection is estimated to average 53 minutes per response, including the time to review instructions, search existing data resources, gather the data needed, and complete and review the information collection. If you have any comments concerning the accuracy of the time estimate, suggestions for improving this collection, or comments or concerns about the contents or the status of your individual submission of this questionnaire, please e-mail: [ssocs@census.gov](mailto:ssocs@census.gov), or write directly to: School Survey on Crime and Safety (SSOCS), National Center for Education Statistics (NCES), PCP, 550 12<sup>th</sup> Street SW, #4012, Washington, DC 20202.

#### **Institutional Review Board (IRB) or Human Subjects Review:**

Under the federal policy for the protection of human subjects, SSOCS is exempt from IRB review because it utilizes survey procedures and is conducted in established or commonly accepted educational settings, involving normal educational practices. There is no potential for harm to human subjects.

The Department of Education has adopted a common set of regulations known as the *Federal Policy for the Protection of Human Subjects* or "Common Rule." The design of these regulations is based on established, internationally recognized ethical principles. The specific regulation is Title 34, Code of Federal Regulations, Part 97, Protection of Human Subjects, which includes Subpart A, Basic Policy, and Subpart D, Additional Protections for Children. These regulations classify as exempt certain categories of research. Research that is nonexempt is **covered** by the regulations. Research activities in which the only involvement of human subjects will be in one or more of the following categories are exempt [34 CFR 97.101(b)(2)]:

(2) Research involving the use of educational tests (cognitive, diagnostic, aptitude, achievement), survey procedures, interview procedures or observation of public behavior, unless the information identifies the subjects and disclosure could reasonably place the subjects at risk of criminal or civil liability or be damaging to the subjects' financial standing, employability, or reputation. Subpart D amends this exemption, in part: *If the subjects are children, research involving interview or survey procedures and research involving observations of public behavior in which the researcher(s) participate in the activities being observed are **not** exempt. However, research involving the use of educational tests and research involving observations of public behavior in which the researcher(s) do not participate in the activities being observed are exempt.*

For more information, please see <http://www2.ed.gov/policy/fund/guid/humansub/overview.html>.

#### **Informed Consent:**

The nature of this self-administered, cross-sectional survey is not considered intrusive and has been ruled to be exempt under the protection of human subjects' provisions in federal research.

There are no individual student data (such as test scores or Social Security numbers) associated with any of the data acquired in this data collection. Since no data are collected about individual students, it is not necessary to obtain active, informed consent from students' parents/guardians.

Participation in SSOCS is completely voluntary, and individual survey items can be left blank, at the discretion of each respondent. A statement on the questionnaire indicates that participation is voluntary. A respondent gives implied consent to participate by completing the SSOCS questionnaire.

## School Survey on Crime and Safety (SSOCS) 2018 District Approval Form

Please mark one of the boxes below to let us know your district's decision to allow sampled school(s) to participate in the School Survey on Crime and Safety (SSOCS).

- The U.S. Department of Education has permission to administer the School Survey on Crime and Safety (SSOCS) 2018 to one or more schools in the [District Name].
- The U.S. Department of Education does not have permission to administer the School Survey on Crime and Safety (SSOCS) 2018 to any school in the [District Name].

Printed  
Name: \_\_\_\_\_

Date: \_\_\_\_\_

Signature: \_\_\_\_\_

Title: \_\_\_\_\_

Address: \_\_\_\_\_

Phone: \_\_\_\_\_

Email: \_\_\_\_\_

Please return this form to [contact info] by email to [email], or by mail to:

[address]

## Affidavit of Nondisclosure for Districts that Require the List of Schools in the Study Sample

### 2018 School Survey on Crime and Safety (SSOCS)

\_\_\_\_\_  
(Job Title)

\_\_\_\_\_  
(Organization Name)

2018 SSOCS List of Sampled Schools

\_\_\_\_\_  
(Name of NCES File with Individually Identifiable Information)

\_\_\_\_\_  
(Organization Address)

I, \_\_\_\_\_,  
(Printed Full Name)

do solemnly swear (or affirm) that when given access to the subject NCES file, I will not

- (i) use or reveal any individually identifiable information furnished, acquired, retrieved or assembled by me or others, under the provisions of the Education Sciences Reform Act of 2002 (20 U.S.C. §9573) and Title V, subtitle A of the E-Government Act of 2002 (P.L. 107-347) for any purpose other than statistical purposes specified in the NCES survey, project or agreement;
- (ii) make any disclosure or publication whereby a sample unit or survey respondent (including principals, teachers, and schools) could be identified or the data furnished by or related to any particular person or school under these sections could be identified; or
- (iii) permit anyone other than the individuals authorized by the Commissioner of the National Center for Education Statistics (NCES) who have signed an affidavit of nondisclosure to examine the list of participating districts, schools, and/or staff.

[The penalty for unlawful disclosure is a fine of not more than \$250,000 (under 18 U.S.C. 3571) or imprisonment for not more than five years (under 18 U.S.C. 3559), or both. The word "swear" should be stricken out when a person elects to affirm the affidavit rather than to swear to it.]

\_\_\_\_\_  
(Signature)

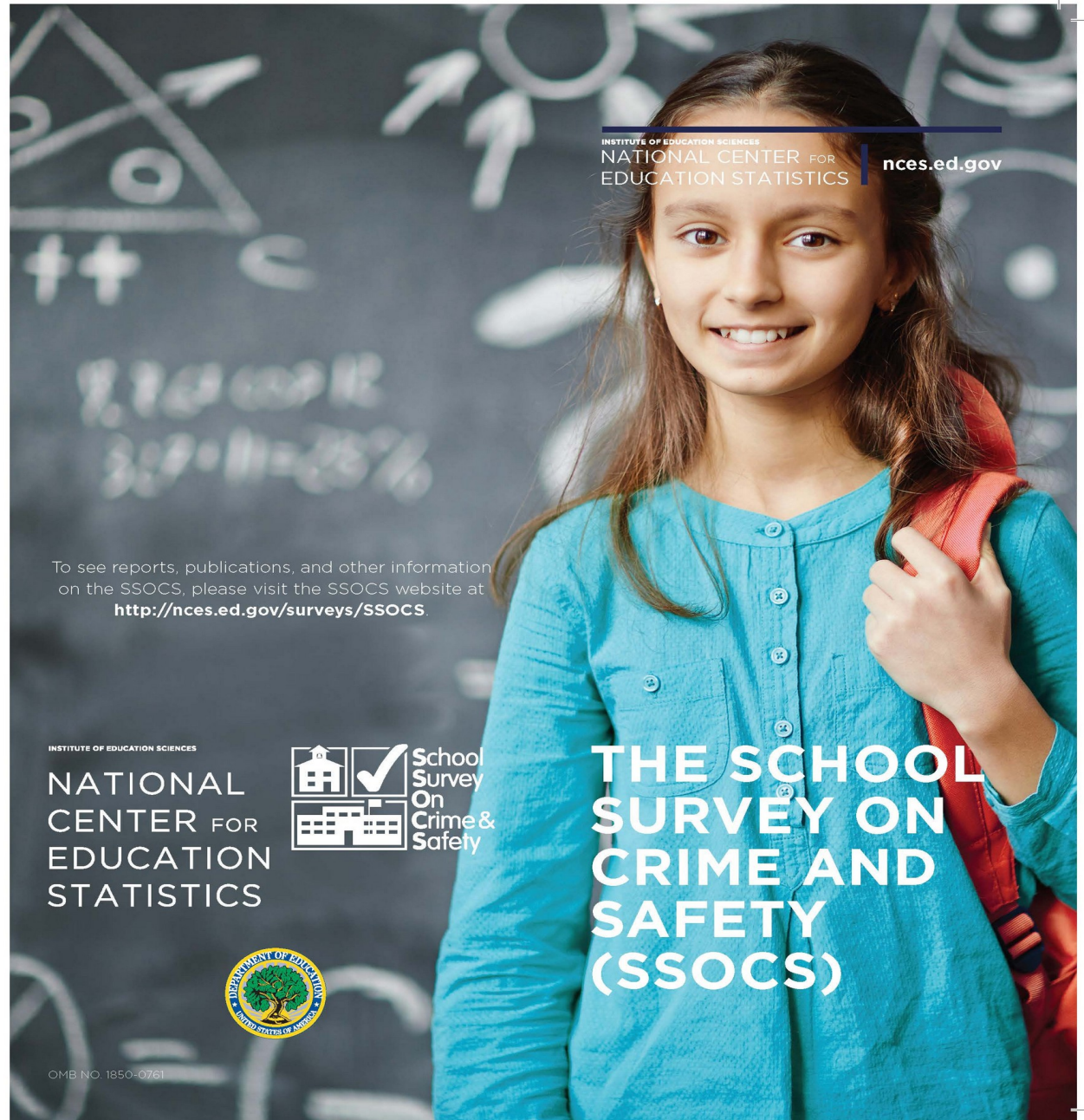
\_\_\_\_\_  
(Date)

**What topics are covered in the questionnaire?**

- School policies and programs concerning crime and safety;
- Student, teacher, parent, and community involvement in efforts to prevent or reduce school violence;
- Responsibilities of sworn law enforcement officers and SROs;
- Mental health services available to students at school;
- Frequency and types of disciplinary actions such as removals, transfers, and suspensions for selected offenses;
- Perceptions of disciplinary problems such as bullying, verbal abuse, and disorder in the classroom;
- Frequency and types of crimes at school, including rape, sexual assault, physical attack, robbery, theft, and vandalism.

**Do individual school data remain confidential?**


All of the information you provide may be used only for statistical purposes and may not be disclosed, or used, in identifiable form for any other purpose except as required by law (20 U.S.C. §9573 and 6 U.S.C. §151). Your responses will be combined with those from other participants to produce summary statistics and reports. Reports of the findings from the survey will not identify participating districts, schools, or staff; no individual data such as names or addresses will be reported. Any attempt on the part of a data user to identify a school or a specific respondent is prohibited by law and punishable with a fine of up to \$250,000 and/or a prison term up to 5 years.




INSTITUTE OF EDUCATION SCIENCES  
NATIONAL CENTER FOR EDUCATION STATISTICS | [nces.ed.gov](http://nces.ed.gov)

To see reports, publications, and other information on the SSOCS, please visit the SSOCS website at <http://nces.ed.gov/surveys/SSOCS>.

INSTITUTE OF EDUCATION SCIENCES  
NATIONAL CENTER FOR EDUCATION STATISTICS

 School Survey On Crime & Safety

**THE SCHOOL SURVEY ON CRIME AND SAFETY (SSOCS)**



OMB NO. 1850-0761

### What is the School Survey on Crime and Safety (SSOCS)?

The School Survey on Crime and Safety (SSOCS) is a national survey of elementary and secondary public schools that collects information on school safety, including the frequency of school crime and violence, disciplinary actions, and school practices related to the prevention and reduction of crime. SSOCS is one of the nation's primary sources of school-level data on crime and safety. Conducted by the U.S. Department of Education, National Center for Education Statistics (NCES), it has been administered six times since 2000 to nationally representative samples of schools and will be conducted again in the spring of the 2017-18 school year. On average, the survey takes 53 minutes to complete.

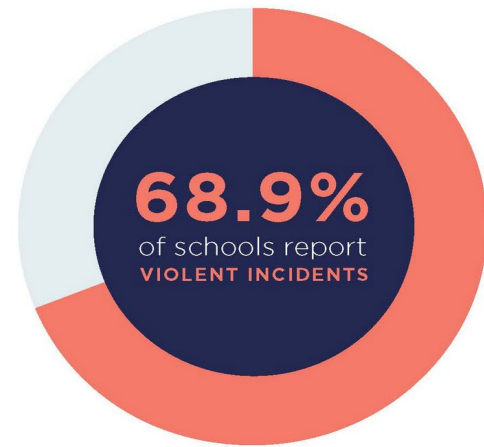
### Why was my school selected?

The SSOCS sample is designed to provide national estimates of primary, middle, high, and combined-grade public schools. Your school was selected to represent hundreds of similar schools nationwide. Your participation is critical to the success of this study so that the results represent the diversity of America's public schools.

### Why is the SSOCS important?

The U.S. Department of Education recognizes that safe schools are essential for learning: without a safe and secure environment, teachers cannot teach and students cannot learn. SSOCS is designed to provide measures of crime and safety in the nation's public schools. SSOCS is the only recurring federal survey that provides this kind of information. The information it collects helps policymakers make informed decisions to provide a safe school environment.

### DURING THE 2015-16 SCHOOL YEAR:



## Example of Formatted SSOCS Communications Letter to Superintendents



SSOCS-12(L)  
(1-2018)

**Study conducted by:**  
U.S. DEPARTMENT OF EDUCATION  
NATIONAL CENTER FOR EDUCATION  
STATISTICS

U.S. DEPARTMENT OF EDUCATION  
INSTITUTE OF EDUCATION SCIENCES  
NATIONAL CENTER FOR EDUCATION STATISTICS



**Data collected by:**  
U.S. DEPARTMENT OF COMMERCE  
Economics and Statistics Administration  
U.S. CENSUS BUREAU

Dear Superintendent:

The National Center for Education Statistics (NCES) of the U.S. Department of Education is conducting an important national study that collects information about crime and safety in public schools from school principals. The School Survey on Crime and Safety (SSOCS) was previously conducted in the 1999–2000, 2003–04, 2015–06, 2007–08, 2009–10, and 2015–16 school years. Data collection for this survey is being administered by the U.S. Census Bureau on behalf of NCES.

**SSOCS is endorsed by:**

- American Association of School Administrators
- American Federation of Teachers
- American School Counselors Association
- Association for Middle Level Education
- Association of American Educators
- Council of Chief State School Officers
- Education Northwest
- National Association of State Boards of Education
- National Association of Elementary School Principals
- National Association of School Resource Officers
- National Association of Secondary School Principals
- National PTA
- National School Safety Center
- School Safety Advocacy Council
- UCLA Center for Mental Health in Schools
- National Association of School Psychologists
- School Social Work Association of America

**At least one school in your district has been selected to participate in SSOCS.** For your information, we are enclosing the materials that are being sent to the school(s), including the letter asking them to participate, the questionnaire, and a brochure describing the survey. Please do not provide this questionnaire to any school or complete it with district information. This questionnaire is only for your reference; you do not need to take any action regarding this survey.

We recognize that some schools may not want to share information related to crime for fear of receiving negative attention. Please be assured that by federal mandate we are required to protect the identity of all schools included in our survey from public disclosure.

Though participation in the survey is voluntary, the success of any survey depends on the willingness of those selected to participate. The greater the level of participation, the better our survey data can provide a current picture of the full diversity of situations found across the nation's schools. **We hope that you will encourage the selected school(s) in your district to participate.**

Thank you for your assistance. If you have any general questions about the study, please contact the U.S. Census Bureau at 1–800–221–1204. Someone will be available to take your call Monday through Friday, between 8:00 a.m. and 5:00 p.m. (Eastern Time). The U.S. Census Bureau is also available to answer your questions via e-mail at [ssocs@census.gov](mailto:ssocs@census.gov). To learn more about SSOCS, please visit <http://www.nces.ed.gov/surveys/ssocs>.

Sincerely,

Peggy G. Carr, Ph. D.  
Acting Commissioner  
National Center for Education Statistics

Enclosures

Letter  
Brochure  
2018 SSOCS Questionnaire

NCES is authorized to conduct this survey by the Education Sciences Reform Act of 2002 (ESRA 2002, 20 U.S.C. §9543). All of the information schools provide may be used only for statistical purposes and may not be disclosed, or used, in identifiable form for any other purpose except as required by law (20 U.S.C. §9573 and 6 U.S.C. §151). Reports of the findings from the survey will not identify participating districts, schools, or staff. Individual responses will be combined with those from other participants to produce summary statistics and reports.

**Advance Letter to District Superintendent**  
**SSOCS-10L**

Dear Superintendent:

The National Center for Education Statistics (NCES) of the U.S. Department of Education is conducting an important national study that collects information about crime and safety in public schools from school principals. The School Survey on Crime and Safety (SSOCS) was previously conducted in the 1999–2000, 2003–04, 2015–06, 2007–08, 2009–10, and 2015–16 school years. Data collection for this survey is being administered by the U.S. Census Bureau on behalf of NCES.

**At least one school in your district has been selected to participate in SSOCS.** For your information, we are enclosing the materials that are being sent to the school(s), including the letter asking them to participate, the questionnaire, and a brochure describing the survey. Please do not provide this questionnaire to any school or complete it with district information. This questionnaire is only for your reference; you do not need to take any action regarding this survey.

We recognize that some schools may not want to share information related to crime for fear of receiving negative attention. Please be assured that by federal mandate we are required to protect the identity of all schools included in our survey from public disclosure.

Though participation in the survey is voluntary, the success of any survey depends on the willingness of those selected to participate. The greater the level of participation, the better our survey data can provide a current picture of the full diversity of situations found across the nation's schools. **We hope that you will encourage the selected school(s) in your district to participate.**

Thank you for your assistance. If you have any general questions about the study, please contact the U.S. Census Bureau at 1–800–221–1204. Someone will be available to take your call Monday through Friday, between 8:00 a.m. and 5:00 p.m. (Eastern Time). The U.S. Census Bureau is also available to answer your questions via e-mail at [ssocs@census.gov](mailto:ssocs@census.gov). To learn more about SSOCS, please visit <http://www.nces.ed.gov/surveys/ssocs>.

Sincerely,

Peggy G. Carr, Ph. D.  
Commissioner  
National Center for Education Statistics (NCES)

Enclosures

Letter  
Brochure  
2018 SSOCS Questionnaire

NCES is authorized to conduct this survey by the Education Sciences Reform Act of 2002 (ESRA 2002, 20 U.S.C. §9543). All of the information schools provide may be used only for statistical purposes and may not be disclosed, or used, in identifiable form for any other purpose except as required by law (20 U.S.C. §9573 and 6 U.S.C. §151). Reports of the findings from the survey will not identify participating districts, schools, or staff. Individual responses will be combined with those from other participants to produce summary statistics and reports.



**Advance Letter to Chief State School Officer  
SSOCS-11L**

Dear <insert name>:

The National Center for Education Statistics (NCES) of the U.S. Department of Education is conducting a national study that collects information about crime and safety in public schools from school principals. The School Survey on Crime and Safety (SSOCS) was previously conducted in the 1999–2000, 2003–04, 2015–06, 2007–08, 2009–10, and 2015–16 school years. Data collection for this survey is being administered by the U.S. Census Bureau on behalf of NCES.

**At least one school in your state has been selected to participate in SSOCS.** For your information, we are enclosing the materials that are being sent to the school(s), including the letter asking them to participate, the questionnaire, and a brochure describing the survey. This questionnaire is only for your reference; you do not need to take any action regarding this survey.

We recognize that some schools may not want to share information related to crime for fear of receiving negative attention. Please be assured that by federal mandate we are required to protect the identity of all schools included in our survey from public disclosure.

Though participation in the survey is voluntary, the success of any survey depends on the willingness of those selected to participate. The greater the level of participation, the better our survey data can provide a current picture of the full diversity of situations found across the nation's schools. **We hope that you will encourage the school(s) in your state to participate.**

Thank you for your assistance. If you have any general questions about the study, please contact the U.S. Census Bureau at 1–800–221–1204. Someone will be available to take your call Monday through Friday, between 8:00 a.m. and 5:00 p.m. (Eastern Time). The U.S. Census Bureau is also available to answer your questions via e-mail at [ssocs@census.gov](mailto:ssocs@census.gov). To learn more about SSOCS, please visit <http://www.nces.ed.gov/surveys/ssocs>.

Sincerely,

Peggy G. Carr, Ph. D.  
Commissioner  
National Center for Education Statistics (NCES)

Enclosures

Letter  
Brochure  
2018 SSOCS Questionnaire

NCES is authorized to conduct this survey by the Education Sciences Reform Act of 2002 (ESRA 2002, 20 U.S.C. §9543). All of the information schools provide may be used only for statistical purposes and may not be disclosed, or used, in identifiable form for any other purpose except as required by law (20 U.S.C. §9573 and 6 U.S.C. §151). Reports of the findings from the survey will not identify participating districts, schools, or staff. Individual responses will be combined with those from other participants to produce summary statistics and reports.

**Advance Letter to Principal**  
**SSOCS-12L**

Dear <insert name>:

**Did you know** that during the 2015–16 school year, the rate of violent incidents (rape, sexual assault other than rape, physical attack or fight with or without a weapon, threat of physical attack with or without a weapon, and robbery with or without a weapon) per 1,000 students was higher in middle schools than in primary schools or high schools?

We at the National Center for Education Statistics (NCES) need your help collecting vital information about school crime and safety by completing the 2018 School Survey on Crime and Safety (SSOCS). Conducted by NCES within the U.S. Department of Education and collected by the U.S. Census Bureau, SSOCS is a recurring survey that focuses on the frequency of crime and violence in the nation’s public schools and the programs and practices schools have developed to provide a safe school environment.

**Your response is critical to the success of this study** because your school is one of only a small number invited to participate, and your school represents hundreds of similar schools nationwide. Additionally, your responses help the policy and program offices at U.S. Department of Education design grant programs intended to address school safety, violence prevention, and school climate.

The person most knowledgeable about school crime and school policies to provide a safe environment should complete this survey, which takes less than one hour on average.

**The U.S. Census Bureau will be sending the SSOCS questionnaire to your school next week.** If you have any general questions about the study, please contact the U.S. Census Bureau at 1–888–595–1332. Someone will be available to take your call Monday through Friday, between 8:00 a.m. and 8:00 p.m. (Eastern Time). The U.S. Census Bureau is also available to answer your questions via e-mail at [ssocs@census.gov](mailto:ssocs@census.gov). To learn more about SSOCS, please visit <http://www.nces.ed.gov/surveys/ssocs>.

We look forward to your school’s participation in this important data collection effort.

Sincerely,

Peggy G. Carr, Ph. D.  
Commissioner  
National Center for Education Statistics (NCES)

Enclosures

Brochure  
2018 SSOCS Questionnaire

NCES is authorized to conduct this survey by the Education Sciences Reform Act of 2002 (ESRA 2002, 20 U.S.C. §9543). All of the information you provide may be used only for statistical purposes and may not be disclosed, or used, in identifiable form for any other purpose except as required by law (20 U.S.C. §9573 and 6 U.S.C. §151). Reports of the findings from the survey will not identify participating districts, schools, or staff. Individual responses will be combined with those from other participants to produce summary statistics and reports.

**Advance Letter to Principal – Special District, Status Pending  
SSOCS-12L(s)**

Dear <insert name>:

**Did you know** that during the 2015–16 school year, the rate of violent incidents (rape, sexual assault other than rape, physical attack or fight with or without a weapon, threat of physical attack with or without a weapon, and robbery with or without a weapon) per 1,000 students was higher in middle schools than in primary schools or high schools?

We at the National Center for Education Statistics (NCES) need your help collecting vital information about school crime and safety by completing the 2018 School Survey on Crime and Safety (SSOCS). Conducted by NCES within the U.S. Department of Education and collected by the U.S. Census Bureau, SSOCS is a recurring survey that focuses on the frequency of crime and violence in the nation’s public schools and the programs and practices schools have developed to provide a safe school environment.

**Your response is critical to the success of this study** because your school is one of only a small number invited to participate, and your school represents hundreds of similar schools nationwide. Additionally, your responses help the policy and program offices at U.S. Department of Education design grant programs intended to address school safety, violence prevention, and school climate.

The person most knowledgeable about school crime and school policies to provide a safe environment should complete this survey, which takes less than one hour on average.

We know that your school district requires researchers to obtain approval to conduct research in your district. **NCES is in the process of obtaining permission to conduct SSOCS in your district.** If you have any questions about this process, please contact your district or the U.S. Census Bureau at 1–888–595–1332. Someone will be available to take your call Monday through Friday, between 8:00 a.m. and 5:00 p.m. (Eastern Time). You may also e-mail questions to [ssocs@census.gov](mailto:ssocs@census.gov).

**The U.S. Census Bureau will be sending the SSOCS questionnaire to your school next week.** If you have any general questions about the survey, please contact the U.S. Census Bureau at the phone number or e-mail address provided above. To learn more about SSOCS, please visit <http://www.nces.ed.gov/surveys/ssocs>.

We look forward to your school’s participation in this important data collection effort.

Sincerely,

Peggy G. Carr, Ph. D.  
Commissioner  
National Center for Education Statistics (NCES)

Enclosures

Brochure  
2018 SSOCS Questionnaire

NCES is authorized to conduct this survey by the Education Sciences Reform Act of 2002 (ESRA 2002, 20 U.S.C. §9543). All of the information you provide may be used only for statistical purposes and may not be disclosed, or used, in identifiable form for any other purpose except as required by law (20 U.S.C. §9573 and 6 U.S.C. §151). Reports of the findings from the survey will not identify participating districts, schools, or staff. Individual responses will be combined with those from other participants to produce summary statistics and reports.

**Advance Letter to Principal – Special District, Status Approved  
SSOCS-12L(S2)**

Dear <insert name>:

**Did you know** that during the 2015–16 school year, the rate of violent incidents (rape, sexual assault other than rape, physical attack or fight with or without a weapon, threat of physical attack with or without a weapon, and robbery with or without a weapon) per 1,000 students was higher in middle schools than in primary schools or high schools?

We at the National Center for Education Statistics (NCES) need your help collecting vital information about school crime and safety by completing the 2018 School Survey on Crime and Safety (SSOCS). Conducted by NCES within the U.S. Department of Education and collected by the U.S. Census Bureau, SSOCS is a recurring survey that focuses on the frequency of crime and violence in the nation’s public schools and the programs and practices schools have developed to provide a safe school environment.

**Your response is critical to the success of this study** because your school is one of only a small number invited to participate, and your school represents hundreds of similar schools nationwide. Additionally, your responses help the policy and program offices at U.S. Department of Education design grant programs intended to address school safety, violence prevention, and school climate.

The person most knowledgeable about school crime and school policies to provide a safe environment should complete this survey, which takes less than one hour on average.

We know that your school district requires researchers to obtain approval to conduct research in your district. **NCES has obtained permission to conduct SSOCS in your district.** If you have any questions about this process, please contact your district or the U.S. Census Bureau at 1–888–595–1332. Someone will be available to take your call Monday through Friday, between 8:00 a.m. and 5:00 p.m. (Eastern Time). You may also e-mail questions to [ssocs@census.gov](mailto:ssocs@census.gov).

**The U.S. Census Bureau will be sending the SSOCS questionnaire to your school next week.** If you have any general questions about the survey, please contact the U.S. Census Bureau at the phone number or e-mail address provided above. To learn more about SSOCS, please visit <http://www.nces.ed.gov/surveys/ssocs>.

We look forward to your school’s participation in this important data collection effort.

Sincerely,

Peggy G. Carr, Ph. D.  
Commissioner  
National Center for Education Statistics (NCES)

Enclosures

Brochure  
2018 SSOCS Questionnaire

NCES is authorized to conduct this survey by the Education Sciences Reform Act of 2002 (ESRA 2002, 20 U.S.C. §9543). All of the information you provide may be used only for statistical purposes and may not be disclosed, or used, in identifiable form for any other purpose except as required by law (20 U.S.C. §9573 and 6 U.S.C. §151). Reports of the findings from the survey will not identify participating districts, schools, or staff. Individual responses will be combined with those from other participants to produce summary statistics and reports.

**Postcard to Principal – Special District Approval  
SSOCS-13**

Dear School Principal:

We know that your school district requires researchers to obtain approval to conduct surveys in your district. The National Center for Education Statistics (NCES) of the U.S. Department of Education completed the application process and has received permission to conduct the School Survey on Crime and Safety (SSOCS) in your district. If you have any questions about this application process, please contact your district or the U.S. Census Bureau at 1-800-221-1204 or [ssocs@census.gov](mailto:ssocs@census.gov).

I would like to thank you in advance for your help in completing this survey.

Sincerely,

Rachel Hansen  
Project Director  
National Center for Education Statistics (NCES)

Data collected by:  
U.S. DEPARTMENT OF COMMERCE  
Economics and Statistics Administration  
U.S. CENSUS BUREAU  
Study conducted by:  
U.S. DEPARTMENT OF EDUCATION  
NATIONAL CENTER FOR EDUCATION STATISTICS

**YOUR DISTRICT HAS  
APPROVED SSOCS**



**Initial Letter to Principal - Paper, No Incentive**  
**SSOCS-13L**

Dear <insert name>:

Last week, I wrote to request your participation in the School Survey on Crime and Safety (SSOCS), a national study that collects information about crime and safety in public schools. The survey is conducted by the National Center for Education Statistics (NCES) of the U.S. Department of Education and data collection is being administered by the U.S. Census Bureau on behalf of NCES.

As we mentioned in our previous letter, SSOCS provides a unique opportunity to collect national data on crime and safety from the school's perspective. Findings from the 2015–16 survey included:

- A higher percentage of middle schools reported that student bullying occurred at school daily or at least once a week than did high schools or primary schools.
- Higher percentages of schools reported that they had drilled students on lockdown procedures and evacuation procedures compared with shelter-in-place procedures.

We are confident that, with your participation, we can provide data to state and federal agencies about various types of crime and discipline that exist in schools today. Although SSOCS may ask some questions that appear similar to those on other surveys, this survey is not connected to any other state or federal data collection system. **SSOCS is unique in that it provides national estimates of school crime and safety using common definitions across all states.**

While your participation in this survey is voluntary and your decision will not affect any benefits or funding you receive from the U.S. Department of Education, we do hope you will participate in this important national survey. We realize that data on school crime are highly sensitive, so we want to assure you that by federal mandate we are required to protect the identity of all schools included in our survey from public disclosure and that information provided as part of this study may be used only for statistical purposes.

**We would appreciate the return of the questionnaire within two weeks.** A postage-paid return envelope has been enclosed for your convenience.

If you have any general questions about the study, please contact the U.S. Census Bureau at 1–888–595–1332. Someone will be available to take your call Monday through Friday, between 8:00 a.m. and 8:00 p.m. (Eastern Time). The U.S. Census Bureau is also available to answer your questions via e-mail at [ssocs@census.gov](mailto:ssocs@census.gov). To learn more about SSOCS, please visit <http://www.nces.ed.gov/surveys/ssocs>.

Sincerely,

Peggy G. Carr, Ph. D.  
Commissioner  
National Center for Education Statistics (NCES)

Enclosures

Brochure  
2018 SSOCS Questionnaire

NCES is authorized to conduct this survey by the Education Sciences Reform Act of 2002 (ESRA 2002, 20 U.S.C. §9543). All of the information you provide may be used only for statistical purposes and may not be disclosed, or used, in identifiable form for any other purpose except as required by law (20 U.S.C. §9573 and 6 U.S.C. §151). Reports of the findings from the survey will not identify participating districts, schools, or staff. Individual responses will be combined with those from other participants to produce summary statistics and reports.

**Initial Letter to Principal - Paper, Incentive  
SSOCS-13L(I)**

Dear <insert name>:

Last week, I wrote to request your participation in the School Survey on Crime and Safety (SSOCS), a national study that collects information about crime and safety in public schools. The survey is conducted by the National Center for Education Statistics (NCES) of the U.S. Department of Education and data collection is being administered by the U.S. Census Bureau on behalf of NCES. **Please accept the enclosed token of our appreciation for your participation in the SSOCS.**

As we mentioned in our previous letter, SSOCS provides a unique opportunity to collect national data on crime and safety from the school's perspective. Findings from the 2015–16 survey included:

- A higher percentage of middle schools reported that student bullying occurred at school daily or at least once a week than did high schools or primary schools.
- Higher percentages of schools reported that they had drilled students on lockdown procedures and evacuation procedures compared with shelter-in-place procedures.

We are confident that, with your participation, we can provide data to state and federal agencies about various types of crime and discipline that exist in schools today. Although SSOCS may ask some questions that appear similar to those on other surveys, this survey is not connected to any other state or federal data collection system. **SSOCS is unique in that it provides national estimates of school crime and safety using common definitions across all states.**

While your participation in this survey is voluntary and your decision will not affect any benefits or funding you receive from the U.S. Department of Education, we do hope you will participate in this important national survey. We realize that data on school crime are highly sensitive, so we want to assure you that by federal mandate we are required to protect the identity of all schools included in our survey from public disclosure and that information provided as part of this study may be used only for statistical purposes.

**We would appreciate the return of the questionnaire within two weeks.** A postage-paid return envelope has been enclosed for your convenience.

If you have any general questions about the study, please contact the U.S. Census Bureau at 1–888–595–1332. Someone will be available to take your call Monday through Friday, between 8:00 a.m. and 8:00 p.m. (Eastern Time). The U.S. Census Bureau is also available to answer your questions via e-mail at [ssocs@census.gov](mailto:ssocs@census.gov). To learn more about SSOCS, please visit <http://www.nces.ed.gov/surveys/ssocs>.

Sincerely,

Peggy G. Carr, Ph. D.  
Commissioner  
National Center for Education Statistics (NCES)

Enclosures

Brochure  
Gift Card  
2018 SSOCS Questionnaire

NCES is authorized to conduct this survey by the Education Sciences Reform Act of 2002 (ESRA 2002, 20 U.S.C. §9543). All of the information you provide may be used only for statistical purposes and may not be disclosed, or used, in identifiable form for any other purpose except as required by law (20 U.S.C. §9573 and 6 U.S.C. §151). Reports of the findings from the survey will not identify participating districts, schools, or staff. Individual responses will be combined with those from other participants to produce summary statistics and reports.

**Initial Letter to Principal - Web, No Incentive  
SSOCS-13L(W)**

Dear <insert name>:

Last week, I wrote to request your participation in the School Survey on Crime and Safety (SSOCS), a national study that collects information about crime and safety in public schools. The survey is conducted by the National Center for Education Statistics (NCES) of the U.S. Department of Education and data collection is being administered by the U.S. Census Bureau on behalf of NCES.

As we mentioned in our previous letter, SSOCS provides a unique opportunity to collect national data on crime and safety from the school's perspective. Findings from the 2015–16 survey included:

- A higher percentage of middle schools reported that student bullying occurred at school daily or at least once a week than did high schools or primary schools.
- Higher percentages of schools reported that they had drilled students on lockdown procedures and evacuation procedures compared with shelter-in-place procedures.

We are confident that, with your participation, we can provide data to state and federal agencies about various types of crime and discipline that exist in schools today. Although SSOCS may ask some questions that appear similar to those on other surveys, this survey is not connected to any other state or federal data collection system. **SSOCS is unique in that it provides national estimates of school crime and safety using common definitions across all states.**

While your participation in this survey is voluntary and your decision will not affect any benefits or funding you receive from the U.S. Department of Education, we do hope you will participate in this important national survey. We realize that data on school crime are highly sensitive, so we want to assure you that by federal mandate we are required to protect the identity of all schools included in our survey from public disclosure and that information provided as part of this study may be used only for statistical purposes.

Your survey responses will be collected on a secure website. **Please complete the survey online within two weeks.**

Respond now at <https://respond.census.gov/ssocs>

Log in using this User ID: <USERID>

If you have any general questions about the study, please contact the U.S. Census Bureau at 1–888–595–1332. Someone will be available to take your call Monday through Friday, between 8:00 a.m. and 8:00 p.m. (Eastern Time). The U.S. Census Bureau is also available to answer your questions via e-mail at [ssocs@census.gov](mailto:ssocs@census.gov). To learn more about SSOCS, please visit <http://www.nces.ed.gov/surveys/ssocs>.

Sincerely,

Peggy G. Carr, Ph. D.  
Commissioner  
National Center for Education Statistics (NCES)

Enclosures

Brochure

NCES is authorized to conduct this survey by the Education Sciences Reform Act of 2002 (ESRA 2002, 20 U.S.C. §9543). All of the information you provide may be used only for statistical purposes and may not be disclosed, or used, in identifiable form for any other purpose except as required by law (20 U.S.C. §9573 and 6 U.S.C. §151). Reports of the findings from the survey will not identify participating districts, schools, or staff. Individual responses will be combined with those from other participants to produce summary statistics and reports.



**Initial Letter to Principal - Web, Incentive  
SSOCS-13L(WI)**

Dear <insert name>:

Last week, I wrote to request your participation in the School Survey on Crime and Safety (SSOCS), a national study that collects information about crime and safety in public schools. The survey is conducted by the National Center for Education Statistics (NCES) of the U.S. Department of Education and data collection is being administered by the U.S. Census Bureau on behalf of NCES. **Please accept the enclosed token of our appreciation for your participation in the SSOCS.**

As we mentioned in our previous letter, SSOCS provides a unique opportunity to collect national data on crime and safety from the school's perspective. Findings from the 2015–16 survey included:

- A higher percentage of middle schools reported that student bullying occurred at school daily or at least once a week than did high schools or primary schools.
- Higher percentages of schools reported that they had drilled students on lockdown procedures and evacuation procedures compared with shelter-in-place procedures.

We are confident that, with your participation, we can provide data to state and federal agencies about various types of crime and discipline that exist in schools today. Although SSOCS may ask some questions that appear similar to those on other surveys, this survey is not connected to any other state or federal data collection system. **SSOCS is unique in that it provides national estimates of school crime and safety using common definitions across all states.**

While your participation in this survey is voluntary and your decision will not affect any benefits or funding you receive from the U.S. Department of Education, we do hope you will participate in this important national survey. We realize that data on school crime are highly sensitive, so we want to assure you that by federal mandate we are required to protect the identity of all schools included in our survey from public disclosure and that information provided as part of this study may be used only for statistical purposes.

Your survey responses will be collected on a secure website. **Please complete the survey online within two weeks.**

Respond now at <https://respond.census.gov/ssocs>

Log in using this User ID: <USERID>

If you have any general questions about the study, please contact the U.S. Census Bureau at 1–888–595–1332. Someone will be available to take your call Monday through Friday, between 8:00 a.m. and 8:00 p.m. (Eastern Time). The U.S. Census Bureau is also available to answer your questions via e-mail at [ssocs@census.gov](mailto:ssocs@census.gov). To learn more about SSOCS, please visit <http://www.nces.ed.gov/surveys/ssocs>.

Sincerely,

Peggy G. Carr, Ph. D.  
Commissioner  
National Center for Education Statistics (NCES)

Enclosures

Brochure  
Gift Card

NCES is authorized to conduct this survey by the Education Sciences Reform Act of 2002 (ESRA 2002, 20 U.S.C. §9543). All of the information you provide may be used only for statistical purposes and may not be disclosed, or used, in identifiable form for any other purpose except as required by law (20 U.S.C. §9573 and 6 U.S.C. §151). Reports of the findings from the survey will not identify participating districts, schools, or staff. Individual responses will be combined with those from other participants to produce summary statistics and reports.

**First Reminder Letter to Principal – Paper  
SSOCS-14L**

**Submission Deadline Extended**

Dear <insert name>:

As of today, we have not received your completed School Survey on Crime and Safety (SSOCS) questionnaire. If you have recently returned the questionnaire, thank you for your participation. If you have not yet completed the questionnaire, I encourage you to do so. **We have extended the deadline to <insert date>.**

SSOCS is a national study that collects information about crime and safety in public schools. The survey is conducted by the National Center for Education Statistics (NCES) of the U.S. Department of Education and data collection is being administered by the U.S. Census Bureau on behalf of NCES.

We acknowledge that you are very busy and that you receive many survey requests. However, we urge you to take the time to respond. Principals who participated in past iterations of SSOCS reported that they benefited from filling out our survey because it encouraged them to set aside time to focus on crime and safety issues at their schools.

While your decision to participate is voluntary and will not affect any benefits or funding you receive from the U.S. Department of Education, we do hope that you will participate in this important national survey. The data you provide are combined with the information provided by others in statistical reports to present estimates of school crime, discipline, disorder, programs, and policies for schools nationwide.

A postage-paid return envelope is enclosed for your convenience. If you have any questions about the study, please do not hesitate to contact the U.S. Census Bureau at 1-888-595-1332. Someone will be available to take your call Monday through Friday, between 8:00 a.m. and 8:00 p.m. (Eastern Time). The U.S. Census Bureau is also available to answer your questions via e-mail at [ssocs@census.gov](mailto:ssocs@census.gov). To learn more about SSOCS, please visit <http://www.nces.ed.gov/surveys/ssocs>.

Sincerely,

Peggy G. Carr, Ph. D.  
Commissioner  
National Center for Education Statistics (NCES)

Enclosures

2018 SSOCS Questionnaire

NCES is authorized to conduct this survey by the Education Sciences Reform Act of 2002 (ESRA 2002, 20 U.S.C. §9543). All of the information you provide may be used only for statistical purposes and may not be disclosed, or used, in identifiable form for any other purpose except as required by law (20 U.S.C. §9573 and 6 U.S.C. §151). Reports of the findings from the survey will not identify participating districts, schools, or staff. Individual responses will be combined with those from other participants to produce summary statistics and reports.

**First Reminder Letter to Principal – Internet  
SSOCS-14L(W)**

**Submission Deadline Extended**

Dear <insert name>:

As of today, we have not received your completed School Survey on Crime and Safety (SSOCS) questionnaire. If you have recently completed the online questionnaire, thank you for your participation. If you have not yet completed the questionnaire, I encourage you to do so. **We have extended the deadline to <insert date>.**

SSOCS is a national study that collects information about crime and safety in public schools. The survey is conducted by the National Center for Education Statistics (NCES) of the U.S. Department of Education and data collection is being administered by the U.S. Census Bureau on behalf of NCES.

We acknowledge that you are very busy and that you receive many survey requests. However, we urge you to take the time to respond. Principals who participated in past iterations of SSOCS reported that they benefited from filling out our survey because it encouraged them to set aside time to focus on crime and safety issues at their schools.

Your survey responses will be collected on a secure website.

Respond now at <https://respond.census.gov/ssocs>

Log in using this User ID: <USERID>

While your decision to participate is voluntary and will not affect any benefits or funding you receive from the U.S. Department of Education, we do hope that you will participate in this important national survey. The data you provide are combined with the information provided by others in statistical reports to present estimates of school crime, discipline, disorder, programs, and policies for schools nationwide.

If you have any questions about the study, please do not hesitate to contact the U.S. Census Bureau at 1-888-595-1332. Someone will be available to take your call Monday through Friday, between 8:00 a.m. and 8:00 p.m. (Eastern Time). The U.S. Census Bureau is also available to answer your questions via e-mail at [ssocs@census.gov](mailto:ssocs@census.gov). To learn more about SSOCS, please visit <http://www.nces.ed.gov/surveys/ssocs>.

Sincerely,

Peggy G. Carr, Ph. D.  
Commissioner  
National Center for Education Statistics (NCES)

NCES is authorized to conduct this survey by the Education Sciences Reform Act of 2002 (ESRA 2002, 20 U.S.C. §9543). All of the information you provide may be used only for statistical purposes and may not be disclosed, or used, in identifiable form for any other purpose except as required by law (20 U.S.C. §9573 and 6 U.S.C. §151). Reports of the findings from the survey will not identify participating districts, schools, or staff. Individual responses will be combined with those from other participants to produce summary statistics and reports.

**Second Reminder Letter to Principal – Paper  
SSOCS-15L**

**Submission Deadline Extended**

Dear <insert name>:

We recently mailed you a second package of materials for completing the School Survey on Crime and Safety (SSOCS), a national study that collects information about crime and safety in public schools. The survey is conducted by the National Center for Education Statistics (NCES) of the U.S. Department of Education and data collection is being administered by the U.S. Census Bureau on behalf of NCES.

According to our records, you have not yet completed the SSOCS questionnaire. If you have recently returned the questionnaire, thank you for your participation, and please disregard this letter. If you have not yet had the opportunity to complete the questionnaire, I encourage you to do so. **We have extended the deadline to <insert date>.**

We acknowledge that you are very busy and that you receive many survey requests. However, we urge you to take the time to respond. Principals who participated in past iterations of SSOCS reported that they benefited from filling out our survey because it encouraged them to set aside time to focus on crime and safety issues at their schools.

While your decision to participate is voluntary and will not affect any benefits or funding you receive from the U.S. Department of Education, we do hope that you will participate in this important national survey. The data you provide are combined with the information provided by others in statistical reports to present estimates of school crime, discipline, disorder, programs, and policies for schools nationwide.

A postage-paid return envelope is enclosed for your convenience. If you have any questions about the study, please do not hesitate to contact the U.S. Census Bureau at 1-888-595-1332. Someone will be available to take your call Monday through Friday, between 8:00 a.m. and 8:00 p.m. (Eastern Time). The U.S. Census Bureau is also available to answer your questions via e-mail at [ssocs@census.gov](mailto:ssocs@census.gov). To learn more about SSOCS, please visit <http://www.nces.ed.gov/surveys/ssocs>.

Sincerely,

Peggy G. Carr, Ph. D.  
Commissioner  
National Center for Education Statistics (NCES)

Enclosures

2018 SSOCS Questionnaire

NCES is authorized to conduct this survey by the Education Sciences Reform Act of 2002 (ESRA 2002, 20 U.S.C. §9543). All of the information you provide may be used only for statistical purposes and may not be disclosed, or used, in identifiable form for any other purpose except as required by law (20 U.S.C. §9573 and 6 U.S.C. §151). Reports of the findings from the survey will not identify participating districts, schools, or staff. Individual responses will be combined with those from other participants to produce summary statistics and reports.

**Second Reminder Letter to Principal - Internet (first paper questionnaire)  
SSOCS-15L(W)**

**Submission Deadline Extended**

Dear <insert name>:

We recently sent you a second invitation to complete the School Survey on Crime and Safety (SSOCS) online. SSOCS is a national study that collects information about crime and safety in public schools. The survey is conducted by the National Center for Education Statistics (NCES) of the U.S. Department of Education and data collection is being administered by the U.S. Census Bureau on behalf of NCES.

According to our records, you have not yet completed the SSOCS questionnaire online. If you have recently completed the online questionnaire, thank you for your participation, and please disregard this letter. If you have not, I encourage you to complete the enclosed questionnaire. **We have extended the deadline to <insert date>.**

We acknowledge that you are very busy and that you receive many survey requests. However, we urge you to take the time to respond. Principals who participated in past iterations of SSOCS reported that they benefited from filling out our survey because it encouraged them to set aside time to focus on crime and safety issues at their schools.

While your decision to participate is voluntary and will not affect any benefits or funding you receive from the U.S. Department of Education, we do hope that you will participate in this important national survey. The data you provide are combined with the information provided by others in statistical reports to present estimates of school crime, discipline, disorder, programs, and policies for schools nationwide.

A postage-paid return envelope is enclosed for your convenience. If you have any questions about the study, please do not hesitate to contact the U.S. Census Bureau at 1-888-595-1332. Someone will be available to take your call Monday through Friday, between 8:00 a.m. and 8:00 p.m. (Eastern Time). The U.S. Census Bureau is also available to answer your questions via e-mail at [ssocs@census.gov](mailto:ssocs@census.gov). To learn more about SSOCS, please visit <http://www.nces.ed.gov/surveys/ssocs>.

Sincerely,

Peggy G. Carr, Ph. D.  
Commissioner  
National Center for Education Statistics (NCES)

Enclosures

2018 SSOCS Questionnaire

NCES is authorized to conduct this survey by the Education Sciences Reform Act of 2002 (ESRA 2002, 20 U.S.C. §9543). All of the information you provide may be used only for statistical purposes and may not be disclosed, or used, in identifiable form for any other purpose except as required by law (20 U.S.C. §9573 and 6 U.S.C. §151). Reports of the findings from the survey will not identify participating districts, schools, or staff. Individual responses will be combined with those from other participants to produce summary statistics and reports.

**Third Reminder Letter to Principal  
SSOCS-16L**

**Submission Deadline Extended**

Dear <insert name>:

Over the past two months, we have contacted you to ask for your participation in the 2018 School Survey on Crime and Safety (SSOCS). SSOCS is a national study that collects information about crime and safety in public schools. The survey is conducted by the National Center for Education Statistics (NCES) of the U.S. Department of Education and data collection is being administered by the U.S. Census Bureau on behalf of NCES.

If you have already returned the completed questionnaire, thank you for your participation, and please disregard this letter. If you have not yet had the opportunity to complete the questionnaire, I encourage you to complete the enclosed questionnaire ***as soon as possible***.

We appreciate that you are very busy and that you receive many survey requests. However, we urge you to take the time to respond. Principals who participated in past iterations of SSOCS reported that they benefited from filling out our survey because it encouraged them to set aside time to focus on crime and safety issues at their schools.

While your decision to participate is voluntary and will not affect any benefits or funding you receive from the U.S. Department of Education, we do hope that you will participate in this important national survey. The data you provide are combined with the information provided by others in statistical reports to present estimates of school crime, discipline, disorder, programs, and policies for schools nationwide.

A postage-paid return envelope is enclosed for your convenience. If you have any questions about the study, please do not hesitate to contact the U.S. Census Bureau at 1-888-595-1332. Someone will be available to take your call Monday through Friday, between 8:00 a.m. and 8:00 p.m. (Eastern Time). The U.S. Census Bureau is also available to answer your questions via e-mail at [ssocs@census.gov](mailto:ssocs@census.gov). To learn more about SSOCS, please visit <http://www.nces.ed.gov/surveys/ssocs>.

Sincerely,

Peggy G. Carr, Ph. D.  
Commissioner  
National Center for Education Statistics (NCES)

Enclosures

2018 SSOCS Questionnaire

NCES is authorized to conduct this survey by the Education Sciences Reform Act of 2002 (ESRA 2002, 20 U.S.C. §9543). All of the information you provide may be used only for statistical purposes and may not be disclosed, or used, in identifiable form for any other purpose except as required by law (20 U.S.C. §9573 and 6 U.S.C. §151). Reports of the findings from the survey will not identify participating districts, schools, or staff. Individual responses will be combined with those from other participants to produce summary statistics and reports.

**Letter to Principal – Replacement Questionnaire**  
**SSOCS-17L**

Dear <insert name>:

Recently, someone from the U.S. Census Bureau spoke with you regarding the School Survey on Crime and Safety (SSOCS), a national study that collects information about crime and safety in public schools. The survey is conducted by the National Center for Education Statistics (NCES) of the U.S. Department of Education and data collection is being administered by the U.S. Census Bureau on behalf of NCES. **Enclosed is the replacement questionnaire that you requested.**

We realize that data on school crime are highly sensitive, so we want to assure you that by federal mandate we are required to protect the identity of all schools included in our survey from public disclosure and that information provided as part of this study may be used only for statistical purposes.

While your decision to participate is voluntary and will not affect any benefits or funding you receive from the U.S. Department of Education, we do hope that you will participate in this important national survey. The data you provide are combined with the information provided by others in statistical reports to present estimates of school crime, discipline, disorder, programs, and policies for schools nationwide.

**We would appreciate the return of the questionnaire within two weeks.** A postage-paid return envelope is enclosed for your convenience. If you have any general questions about the survey, please contact the U.S. Census Bureau at 1–888–595–1332. Someone will be available to take your call Monday through Friday, between 8:00 a.m. and 8:00 p.m. (Eastern Time). The U.S. Census Bureau is also available to answer your questions via e-mail at [ssocs@census.gov](mailto:ssocs@census.gov). To learn more about SSOCS, please visit <http://www.nces.ed.gov/surveys/ssocs>.

Sincerely,

Peggy G. Carr, Ph. D.  
Commissioner  
National Center for Education Statistics (NCES)

Enclosures

2018 SSOCS Questionnaire

NCES is authorized to conduct this survey by the Education Sciences Reform Act of 2002 (ESRA 2002, 20 U.S.C. §9543). All of the information you provide may be used only for statistical purposes and may not be disclosed, or used, in identifiable form for any other purpose except as required by law (20 U.S.C. §9573 and 6 U.S.C. §151). Reports of the findings from the survey will not identify participating districts, schools, or staff. Individual responses will be combined with those from other participants to produce summary statistics and reports.

**Thank You Letter to District  
SSOCS-18L(D)**

Dear <insert name>:

The National Center for Education Statistics (NCES) of the U.S. Department of Education and the U.S. Census Bureau would like to thank you for making the 2017–18 School Survey on Crime and Safety (SSOCS) a success!

SSOCS is the only nationally representative survey that collects data on crime and safety from a principal’s perspective, so we appreciate your approval of our application to conduct research within your district. This school year, we were able to gather data from over <insert number> schools. Your approval was crucial in helping us achieve this success.

Please visit <http://ies.ed.gov/newsflash/#nces> and sign up to receive up-to-date alerts about a number of education topics, including crime and safety in schools. Tables based on data from the 2015–16 SSOCS and earlier SSOCS administrations are available on the NCES website. In addition to these data products, tables and reports based on the 2017–18 SSOCS will be posted to our website at <http://www.nces.ed.gov/surveys/ssocs> upon release.

Again, thank you for your approval.

Sincerely,

Rachel Hansen  
Project Director  
National Center for Education Statistics (NCES)



**Thank You Letter to School**  
**SSOCS-18L**

Dear <insert name>:

The National Center for Education Statistics (NCES) of the U.S. Department of Education and the U.S. Census Bureau would like to thank you for making the 2017–18 School Survey on Crime and Safety (SSOCS) a success!

SSOCS is the only nationally representative survey that collects data on crime and safety from a principal’s perspective, so we appreciate you taking time out of your busy schedule to represent your school in this important effort. This school year, we were able to gather data from over <insert number> schools. Your participation was crucial in helping us achieve this success.

Please visit <http://ies.ed.gov/newsflash/#nces> and sign up to receive up-to-date alerts about a number of education topics, including crime and safety in schools. Tables based on data from the 2015–16 SSOCS and earlier SSOCS administrations are available on the NCES website. In addition to these data products, tables and reports based on the 2017–18 SSOCS will be posted to our website at <http://www.nces.ed.gov/surveys/ssocs> upon release.

Again, thank you for your time and participation.

Sincerely,

Rachel Hansen  
Project Director  
National Center for Education Statistics (NCES)

## Initial e-mail to principals - Paper, Incentive

Subject line: U.S. Department of Education Survey will arrive soon!

Dear (name):

I am writing to invite you to participate in the 2018 School Survey on Crime and Safety (SSOCS) by providing information about your school in a brief questionnaire. When you receive the survey, you will find in the envelope a token of our appreciation for your assistance with the 2017–18 SSOCS.

SSOCS is conducted by the National Center for Education Statistics (NCES) of the U.S. Department of Education and is collected by the U.S. Census Bureau. SSOCS is a recurring survey that focuses on the frequency of crime and violence in public schools and the programs and practices schools have developed to provide a safe school environment. It provides a unique opportunity to collect national data on crime and safety from the school's perspective. **SSOCS is the only survey of its kind!**

**Please expect to receive the SSOCS questionnaire within the next week.** If you have any general questions about the study, please contact the U.S. Census Bureau at 1–888–595–1332. Staff will be available to take your call Monday through Friday, between 8:00 a.m. and 8:00 p.m. (Eastern Time). The U.S. Census Bureau is also available to answer your questions via e-mail at [ssocs@census.gov](mailto:ssocs@census.gov).

Thank you in advance for your participation in this important survey!

Sincerely,

Rachel Hansen  
Project Director  
National Center for Education Statistics (NCES)  
U.S. Department of Education  
550 12th Street, SW, Room 4012  
Washington, DC 20202  
Email: [school.crime@ed.gov](mailto:school.crime@ed.gov)  
Website: <http://www.nces.ed.gov/surveys/ssocs>

## Initial e-mail to principals - Paper, No incentive

Subject line: U.S. Department of Education Survey will arrive soon!

Dear (name):

I am writing to invite you to participate in the 2018 School Survey on Crime and Safety (SSOCS) by providing information about your school in a brief questionnaire. SSOCS is conducted by the National Center for Education Statistics (NCES) of the U.S. Department of Education and is collected by the U.S. Census Bureau. SSOCS is a recurring survey that focuses on the frequency of crime and violence in public schools and the programs and practices schools have developed to provide a safe school environment. It provides a unique opportunity to collect national data on crime and safety from the school's perspective. **SSOCS is the only survey of its kind!**

**Please expect to receive the SSOCS questionnaire within the next week.** If you have any general questions about the study, please contact the U.S. Census Bureau at 1-888-595-1332. Staff will be available to take your call Monday through Friday, between 8:00 a.m. and 8:00 p.m. (Eastern Time). The U.S. Census Bureau is also available to answer your questions via e-mail at [ssocs@census.gov](mailto:ssocs@census.gov).

Thank you in advance for your participation in this important survey!

Sincerely,

Rachel Hansen  
Project Director  
National Center for Education Statistics (NCES)  
U.S. Department of Education  
550 12th Street, SW, Room 4012  
Washington, DC 20202  
Email: [school.crime@ed.gov](mailto:school.crime@ed.gov)  
Website: <http://www.nces.ed.gov/surveys/ssocs>

## Initial e-mail to principals - Web, Incentive

Subject line: U.S. Department of Education Survey will arrive soon!

Dear (name):

I am writing to invite you to participate in the 2018 School Survey on Crime and Safety (SSOCS) by providing information about your school in a brief questionnaire. When you receive the survey, you will find in the envelope a token of our appreciation for your assistance with the 2017–18 SSOCS.

SSOCS is conducted by the National Center for Education Statistics (NCES) of the U.S. Department of Education and is collected by the U.S. Census Bureau. SSOCS is a recurring survey that focuses on the frequency of crime and violence in public schools and the programs and practices schools have developed to provide a safe school environment. It provides a unique opportunity to collect national data on crime and safety from the school's perspective. **SSOCS is the only survey of its kind!**

**Please expect to receive a letter, within the next week, providing you access to participate in the online SSOCS questionnaire.** If you have any general questions about the study, please contact the U.S. Census Bureau at 1–888–595–1332. Staff will be available to take your call Monday through Friday, between 8:00 a.m. and 8:00 p.m. (Eastern Time). The U.S. Census Bureau is also available to answer your questions via e-mail at [ssocs@census.gov](mailto:ssocs@census.gov).

Thank you in advance for your participation in this important survey!

Sincerely,

Rachel Hansen  
Project Director  
National Center for Education Statistics (NCES)  
U.S. Department of Education  
550 12th Street, SW, Room 4012  
Washington, DC 20202  
Email: [school.crime@ed.gov](mailto:school.crime@ed.gov)  
Website: <http://www.nces.ed.gov/surveys/ssocs>

**Initial e-mail to principals - Web, No incentive**

Subject line: U.S. Department of Education Survey will arrive soon!

Dear (name):

I am writing to invite you to participate in the 2018 School Survey on Crime and Safety (SSOCS) by providing information about your school in a brief questionnaire. SSOCS is conducted by the National Center for Education Statistics (NCES) of the U.S. Department of Education and is collected by the U.S. Census Bureau. SSOCS is a recurring survey that focuses on the frequency of crime and violence in public schools and the programs and practices schools have developed to provide a safe school environment. It provides a unique opportunity to collect national data on crime and safety from the school's perspective. **SSOCS is the only survey of its kind!**

**Please expect to receive a letter, within the next week, providing you access to participate in the online SSOCS questionnaire.** If you have any general questions about the study, please contact the U.S. Census Bureau at 1-888-595-1332. Staff will be available to take your call Monday through Friday, between 8:00 a.m. and 8:00 p.m. (Eastern Time). The U.S. Census Bureau is also available to answer your questions via e-mail at [ssocs@census.gov](mailto:ssocs@census.gov).

Thank you in advance for your participation in this important survey!

Sincerely,

Rachel Hansen  
Project Director  
National Center for Education Statistics (NCES)  
U.S. Department of Education  
550 12th Street, SW, Room 4012  
Washington, DC 20202  
Email: [school.crime@ed.gov](mailto:school.crime@ed.gov)  
Website: <http://www.nces.ed.gov/surveys/ssocs>

## First follow-up e-mail to principals – Paper

Subject line: U.S. Department of Education Survey Reminder

Dear (name):

Did you know that during the 2015–16 school year, the rate of violent incidents (rape, sexual assault other than rape, physical attack or fight with or without a weapon, threat of physical attack with or without a weapon, and robbery with or without a weapon) per 1,000 students was higher in middle schools than in primary schools or high schools?

We need your help to gather statistics on the frequency of both violent and nonviolent incidents that occur in schools today, along with the policies and practices educators have instituted to provide a safer environment for students.

Conducted by NCES within the U.S. Department of Education and collected by the U.S. Census Bureau, the School Survey on Crime and Safety (SSOCS) collects these valuable data. If you have already completed and returned your questionnaire, thank you very much for your participation. If not, I encourage you to take the time to do so. Your participation is critical to the success of our survey because your school was selected to represent hundreds of similar schools. Please note that reports of the findings from the survey will not identify schools by name. Individual responses will be combined with those from other participants to produce summary statistics and reports.

If you have any general questions about the study, please contact the U.S. Census Bureau at 1–888–595–1332. Staff will be available to take your call Monday through Friday, between 8:00 a.m. and 8:00 p.m. (Eastern Time). The U.S. Census Bureau is also available to answer your questions via e-mail at [ssocs@census.gov](mailto:ssocs@census.gov).

Sincerely,

Rachel Hansen  
Project Director  
National Center for Education Statistics (NCES)  
U.S. Department of Education  
550 12th Street, SW, Room 4012  
Washington, DC 20202  
Email: [school.crime@ed.gov](mailto:school.crime@ed.gov)  
Website: <http://www.nces.ed.gov/surveys/ssocs>

## First follow-up e-mail to principals – Web

Subject line: U.S. Department of Education Survey Reminder

Dear (name):

Did you know that during the 2015–16 school year, the rate of violent incidents (rape, sexual assault other than rape, physical attack or fight with or without a weapon, threat of physical attack with or without a weapon, and robbery with or without a weapon) per 1,000 students was higher in middle schools than in primary schools or high schools?

We need your help to gather statistics on the frequency of both violent and nonviolent incidents that occur in schools today, along with the policies and practices educators have instituted to provide a safer environment for students.

Conducted by NCES within the U.S. Department of Education and collected by the U.S. Census Bureau, the School Survey on Crime and Safety (SSOCS) collects these valuable data. If you have already logged in and completed your questionnaire, thank you very much for your participation. If not, I encourage you to take the time to do so. Your survey responses will be collected on a secure website.

Respond now at <https://respond.census.gov/ssocs>

Log in using this User ID: <USERID>

Your participation is critical to the success of our survey because your school was selected to represent hundreds of similar schools. Please note that reports of the findings from the survey will not identify schools by name. Individual responses will be combined with those from other participants to produce summary statistics and reports.

If you have any general questions about the study, please contact the U.S. Census Bureau at 1–888–595–1332. Staff will be available to take your call Monday through Friday, between 8:00 a.m. and 8:00 p.m. (Eastern Time). The U.S. Census Bureau is also available to answer your questions via e-mail at [ssocs@census.gov](mailto:ssocs@census.gov).

Sincerely,

Rachel Hansen  
Project Director  
National Center for Education Statistics (NCES)  
U.S. Department of Education  
550 12th Street, SW, Room 4012  
Washington, DC 20202  
Email: [school.crime@ed.gov](mailto:school.crime@ed.gov)  
Website: <http://www.nces.ed.gov/surveys/ssocs>

## Second follow-up e-mail to principals – Paper

Subject line: U.S. Department of Education Survey Reminder

Dear (name):

We know that you are very busy, but we need your help!

Conducted by NCES within the U.S. Department of Education and collected by the U.S. Census Bureau, the School Survey on Crime and Safety (SSOCS) collects valuable information on the frequency of crime and violence in public schools and the programs and practices schools have developed to provide a safe school environment.

The greater the level of participation, the better our survey data can provide a current picture of our nation's schools. The data you provide are combined with the information provided by others in statistical reports to present estimates of school crime, discipline, disorder, programs, and policies for schools nationwide. Schools will not be identified by name in any reports. If you have already completed and returned your questionnaire, thank you! If not, please complete and return your questionnaire as soon as possible.

If you have any general questions about the study, please contact the U.S. Census Bureau at 1-888-595-1332. Staff will be available to take your call Monday through Friday, between 8:00 a.m. and 8:00 p.m. (Eastern Time). The U.S. Census Bureau is also available to answer your questions via e-mail at [ssocs@census.gov](mailto:ssocs@census.gov).

Sincerely,

Rachel Hansen  
Project Director  
National Center for Education Statistics (NCES)  
U.S. Department of Education  
550 12th Street, SW, Room 4012  
Washington, DC 20202  
Email: [school.crime@ed.gov](mailto:school.crime@ed.gov)  
Website: <http://www.nces.ed.gov/surveys/ssocs>



## Second follow-up e-mail to principals – Web

Subject line: U.S. Department of Education Survey Reminder

Dear (name):

We know that you are very busy, but we need your help!

Conducted by NCES within the U.S. Department of Education and collected by the U.S. Census Bureau, the School Survey on Crime and Safety (SSOCS) collects valuable information on the frequency of crime and violence in public schools and the programs and practices schools have developed to provide a safe school environment.

The greater the level of participation, the better our survey data can provide a current picture of our nation's schools. The data you provide are combined with the information provided by others in statistical reports to present estimates of school crime, discipline, disorder, programs, and policies for schools nationwide. Schools will not be identified by name in any reports. If you have already logged in and completed your questionnaire, thank you! If not, please log in and complete your questionnaire as soon as possible. Your survey responses will be collected on a secure website.

Respond now at <https://respond.census.gov/ssocs>

Log in using this User ID: <USERID>

If you have any general questions about the study, please contact the U.S. Census Bureau at 1-888-595-1332. Staff will be available to take your call Monday through Friday, between 8:00 a.m. and 8:00 p.m. (Eastern Time). The U.S. Census Bureau is also available to answer your questions via e-mail at [ssocs@census.gov](mailto:ssocs@census.gov).

Sincerely,

Rachel Hansen  
Project Director  
National Center for Education Statistics (NCES)  
U.S. Department of Education  
550 12th Street, SW, Room 4012  
Washington, DC 20202  
Email: [school.crime@ed.gov](mailto:school.crime@ed.gov)  
Website: <http://www.nces.ed.gov/surveys/ssocs>

### Third follow-up e-mail reminder to nonresponding schools and thank you e-mail to responding schools – Paper

Subject line: U.S. Department of Education Survey - selected findings

Dear (name):

Conducted by NCES within the U.S. Department of Education and collected by the U.S. Census Bureau, the School Survey on Crime and Safety produces valuable data on crime and safety in public schools. Findings from the 2015–16 survey included:

- A higher percentage of schools reported at least one student threat of physical attack without a weapon than with a weapon.
- Higher percentages of schools in which 1,000 or more students were enrolled during the 2015–16 school year reported having one or more School Resource Officers present once a week than did schools with lower enrollments.
- A higher percentage of schools reported at least one incident of the distribution, possession, or use of illegal drugs than reported incidents of the distribution, possession, or use of alcohol or prescription drugs.

Your completed questionnaire will help us to produce statistics for the 2017–18 school year. If you have already completed the survey, thank you for your assistance and please disregard this email. If you haven't had the opportunity to complete and return the survey yet, we encourage you to do so. You may call with any questions or may complete the survey over the phone by calling the U.S. Census Bureau at 1–888–595–1332 between the hours of 8:00 a.m. and 8:00 p.m. (Eastern Time). The U.S. Census Bureau is also available to answer your questions via e-mail at [ssocs@census.gov](mailto:ssocs@census.gov). Please note that reports of the findings from the survey will not identify schools by name. Individual responses will be combined with those from other participants to produce summary statistics and reports.

Sincerely,

Rachel Hansen  
Project Director  
National Center for Education Statistics (NCES)  
U.S. Department of Education  
550 12th Street, SW, Room 4012  
Washington, DC 20202  
Email: [school.crime@ed.gov](mailto:school.crime@ed.gov)  
Website: <http://www.nces.ed.gov/surveys/ssocs>

### Third follow-up e-mail reminder to nonresponding schools and thank you e-mail to responding schools – Web

Subject line: U.S. Department of Education Survey - selected findings

Dear (name):

Conducted by NCES within the U.S. Department of Education and collected by the U.S. Census Bureau, the School Survey on Crime and Safety produces valuable data on crime and safety in public schools. Findings from the 2015–16 survey included:

- A higher percentage of schools reported at least one student threat of physical attack without a weapon than with a weapon.
- Higher percentages of schools in which 1,000 or more students were enrolled during the 2015–16 school year reported having one or more School Resource Officers present once a week than did schools with lower enrollments.
- A higher percentage of schools reported at least one incident of the distribution, possession, or use of illegal drugs than reported incidents of the distribution, possession, or use of alcohol or prescription drugs.

Your completed questionnaire will help us to produce statistics for the 2017–18 school year. If you have already completed the survey, thank you for your assistance and please disregard this email. If you haven't had the opportunity to log on and complete the survey yet, we encourage you to do so. Your survey responses will be collected on a secure website.

Respond now at <https://respond.census.gov/ssocs>

Log in using this User ID: <USERID>

You may call with any questions or may complete the survey over the phone by calling the U.S. Census Bureau at 1–888–595–1332 between the hours of 8:00 a.m. and 8:00 p.m. (Eastern Time). The U.S. Census Bureau is also available to answer your questions via e-mail at [ssocs@census.gov](mailto:ssocs@census.gov). Please note that reports of the findings from the survey will not identify schools by name. Individual responses will be combined with those from other participants to produce summary statistics and reports.

Sincerely,

Rachel Hansen  
Project Director  
National Center for Education Statistics (NCES)  
U.S. Department of Education  
550 12th Street, SW, Room 4012  
Washington, DC 20202  
Email: [school.crime@ed.gov](mailto:school.crime@ed.gov)  
Website: <http://www.nces.ed.gov/surveys/ssocs>

## Fourth follow-up e-mail

Subject Line: U.S. Department of Education Survey – Last Chance to Have Your Voice Heard on School Safety Issues!

Dear (name):

Time is running out for your school to participate in the School Survey on Crime and Safety (SSOCS)!

**Did you know** that during the 2015–16 school year, the rate of violent incidents (rape, sexual assault other than rape, physical attack or fight with or without a weapon, threat of physical attack with or without a weapon, and robbery with or without a weapon) per 1,000 students was higher in middle schools than in primary schools or high schools? Conducted by the U.S. Department of Education and collected by the U.S. Census Bureau, SSOCS is the only regularly reoccurring source of nationally representative data on violent incidents and other topics related to school crime and safety. In order for your school to be included in this study which is used by policy makers, schools districts, and the media to understand current issues in school safety, it is critical that you respond now by **clicking on the link below**.

Respond now at <https://respond.census.gov/ssocs>

Log in using this User ID: <USERID>

You may call with any questions or may complete the survey over the phone by calling the U.S. Census Bureau at 1–888–595–1332. An interviewer will be available to assist you between the hours of 8:00 a.m. and 8:00 p.m. (Eastern Time). The U.S. Census Bureau is also available to answer your questions via e-mail at [ssocs@census.gov](mailto:ssocs@census.gov). Please note that reports of the findings from the survey will not identify schools by name. Individual responses will be combined with those from other participants to produce summary statistics and reports.

If you have already completed and returned your questionnaire, thank you!

Sincerely,

Rachel Hansen  
Project Director  
National Center for Education Statistics  
U.S. Department of Education  
550 12th Street, SW, Room 4012  
Washington, DC 20202  
Email: [school.crime@ed.gov](mailto:school.crime@ed.gov)  
Website: <https://nces.ed.gov/surveys/ssocs/>

## Fifth follow-up e-mail

Subject Line: U.S. Department of Education Survey Reminder

Dear (name):

Time is running out for your school to participate in the School Survey on Crime and Safety (SSOCS)! Conducted by NCES within the U.S. Department of Education and collected by the U.S. Census Bureau, SSOCS produces valuable data on crime and safety in public schools.

If you have already completed and returned your questionnaire, thank you! If not, please complete and return it as soon as possible. You may call with any questions or may complete the survey over the phone by calling the U.S. Census Bureau at 1-888-595-1332. An interviewer will be available to assist you between the hours of 8:00 a.m. and 8:00 p.m. (Eastern Time). The U.S. Census Bureau is also available to answer your questions via e-mail at [ssocs@census.gov](mailto:ssocs@census.gov). Please note that reports of the findings from the survey will not identify schools by name. Individual responses will be combined with those from other participants to produce summary statistics and reports.

Sincerely,

Rachel Hansen  
Project Director  
National Center for Education Statistics (NCES)  
U.S. Department of Education  
550 12th Street, SW, Room 4012  
Washington, DC 20202  
Email: [school.crime@ed.gov](mailto:school.crime@ed.gov)  
Website: <http://www.nces.ed.gov/surveys/ssocs>

## Sixth follow-up e-mail

Subject line: U.S. Department of Education Survey - last chance!

Dear (name):

We need your help! Data collection for the School Survey on Crime and Safety (SSOCS) is coming to a close. Don't miss your opportunity to contribute to data that are used by the U.S. Department of Education's policy and program offices for making policy decisions and designing grant programs intended to address school safety, violence programs, and school climate. If you have not already done so, please complete and return your SSOCS questionnaire. Schools will not be identified by name in any reports. We appreciate your help in this important data collection effort!

SSOCS is conducted by NCES within the U.S. Department of Education and collected by the U.S. Census Bureau. If you have any general questions about the study or if you wish to complete the survey with assistance, please contact the U.S. Census Bureau at 1-888-595-1332. Staff will be available to take your call Monday through Friday, between 8:00 a.m. and 8:00 p.m. (Eastern Time). The U.S. Census Bureau is also available to answer your questions via e-mail at [ssocs@census.gov](mailto:ssocs@census.gov).

Sincerely,

Rachel Hansen  
Project Director  
National Center for Education Statistics (NCES)  
U.S. Department of Education  
550 12th Street, SW, Room 4012  
Washington, DC 20202  
Email: [school.crime@ed.gov](mailto:school.crime@ed.gov)  
Website: <http://www.nces.ed.gov/surveys/ssocs>

## SSOCS Web Instrument Text

**Note: All of the screen shots provided in this section are from the National Teacher and Principal Survey. These screen shots are provided as layout reference only as the SSOCS screens will look the same. The text that will be featured in the SSOCS web instrument is provided below each screen shot.**

### Item: Welcome Page

**National Teacher and Principal Survey**  
NTPS Respondent Portal  
2017-18 School Year

Acting as Collection Agent  
**Census**  
Bureau  
Measuring America

Welcome to the 2017-18 National Teacher and Principal Survey (NTPS) Respondent Portal

→ Enter the 8-digit User ID provided in the e-mail and letter that we sent you.

User ID:

Login

If you have questions  
E-mail us: [ntps@census.gov](mailto:ntps@census.gov)  
Call us: 1-888-595-1338

The National Center for Education Statistics (NCES) within the U.S. Department of Education, is authorized to conduct this survey by the Education Sciences Reform Act of 2002 (ESRA, 20 U.S.C. § 9543). All of the information you provide may be used only for statistical purposes and may not be disclosed, or used, in identifiable form for any other purpose except as required by law (20 U.S.C. §§9573 and 6 U.S.C. §151).

According to the Paperwork Reduction Act of 1995, no persons are required to respond to a collection of information unless it displays a valid OMB control number. The valid OMB control number for this voluntary information collection is 1850-0598. The time required to complete this information collection is estimated to average between 5 and 30 minutes per response, including the time to review instructions, search existing data resources, gather the data needed, and complete and review the information collection. If you have any comments concerning the accuracy of the time estimate, suggestions for improving this collection, or comments or concerns about the contents or the status of your individual submission of this questionnaire, please e-mail: [ntps@census.gov](mailto:ntps@census.gov), or write directly to: National Teacher and Principal Survey (NTPS), National Center for Education Statistics, Potomac Center Plaza, 550 12th Street SW, Room #4014, Washington, DC 20202.

**\*\* WARNING \*\***

You have accessed a UNITED STATES GOVERNMENT computer. Use of this computer without authorization or for purposes for which authorization has not been extended is a violation of Federal law and can be punished with fines or imprisonment (PUBLIC LAW 99-474). System usage may be monitored, recorded, and subject to audit. Any information you enter into this system may be used by the Census Bureau for statistical purposes, including but not limited to improving the efficiency of our data collection programs. Use of this system indicates consent to the collection, monitoring, recording, and use of information provided inside this system.

OMB NO. 1850-0598  
APPROVAL EXPIRES:

ACCESSIBILITY | SECURITY

Welcome to the 2017-18 School Survey on Crime and Safety Questionnaire

Enter the User ID found on the letter we mailed to you.

User ID:

<Login> button

Email us: [addp.education.survey@census.gov](mailto:addp.education.survey@census.gov)

Call us: 1-888-595-1338

The National Center for Education Statistics (NCES) within the U.S. Department of Education, is authorized to conduct this survey by the Education Sciences Reform Act of 2002 (ESRA 2002, 20 U.S.C. §9543). All of the information you provide may be used only for statistical purposes and may not be disclosed, or used, in identifiable form for any other purpose except as required by law (20 U.S.C. §9573 and 6 U.S.C. §151).

According to the Paperwork Reduction Act of 1995, no persons are required to respond to a collection of information unless it displays a valid OMB control number. The valid OMB control number for this voluntary information collection is 1850-0761. The time required to complete this information collection is estimated to average 53 minutes per response, including the time to review instructions, search existing data resources, gather the data needed, and complete and review the information collection. If you have any comments concerning the accuracy of the time estimate, suggestions for improving this collection, or comments or concerns about the contents or the status of your individual submission of this questionnaire, please e-mail: [ssocs@census.gov](mailto:ssocs@census.gov), or write directly to: School Survey on Crime and Safety (SSOCS), National Center for Education Statistics (NCES), Potomac Center Plaza, 550 12<sup>th</sup> Street SW, #4012, Washington, DC 20202.

Warning: You have accessed a UNITED STATES GOVERNMENT computer. Use of this computer without authorization or for purposes for which authorization has not been extended is a violation of Federal law and can be punished with fines or imprisonment (PUBLIC LAW 99-474). System usage may be monitored, recorded, and subject to audit. Any information you enter into this system may be used by the Census Bureau for statistical purposes, including but not limited to improving the efficiency of our data collection programs. Use of this system indicates consent to the collection, monitoring, recording, and use of information provided inside this system.

OMB NO: 1850-0761

APPROVAL EXPIRES:

\*Note: entering log in information takes respondent to the first question on the SSOCS:18 survey. Questionnaire content on the web instrument is the

same as the paper instrument (Appendix B).



## Item: Pin:



### National Teacher and Principal Survey NTPS Respondent Portal 2017-18 School Year

[MAIN MENU](#)[RESOURCES](#)[CONTACT US](#)[SAVE AND CONTINUE LATER](#)

Please make note of the PIN below.

It will allow you to log back into the NTPS Portal if the session times out or you wish to access the NTPS Portal at a later date.

**PIN: 6803**

Please select a security question to answer. If you forget your PIN, you will be asked to provide this answer to re-enter the survey.

Please note: sessions will expire (requiring you to log back in) after 15 minutes of inactivity. No data will be lost.

Verification Question:

Response:

OMB NO.: 1850-0598  
APPROVAL EXPIRES:

[ACCESSIBILITY](#) | [SECURITY](#)

Please make note of the PIN below.

It will allow you to log back into the survey if the session times out or you need to stop and come back later. This survey will take approximately 53 minutes to complete.

PIN:

For your security, we will not be able to reset the PIN if lost or forgotten.

Please note: sessions will expire (requiring you to log back in) after 15 minutes of inactivity. No data will be lost.

Next button

\*NOTE: For SSOCS, there will be an additional Definitions tab that will display the list of terms with definitions. This will be identical to the Definitions page on the paper version of the questionnaire (Appendix B).

## Item: Recovery



### National Teacher and Principal Survey NTPS Respondent Portal 2017-18 School Year



Please provide the answer to the following verification question to reset your PIN for the NTPS Portal.

What color was your first car?

Response:

Please call 1-888-595-1338 if you do not know your verification question response.

[ACCESSIBILITY](#) | [SECURITY](#)

Please provide the answer to the following verification question to reset your PIN for the NTPS Portal.

What color was your first car?

Response:

Submit button

Please call XXX-XXX-XXXX if you do not know your verification question response.

## Item: New PIN



**National Teacher and Principal Survey**  
NTPS Respondent Portal  
2017-18 School Year



Your new PIN is:  
PIN: **7879**

Please log in using your new PIN to access your account.

[Return to Login](#)

[ACCESSIBILITY](#) | [SECURITY](#)

Your new PIN is:

PIN:

Please log in using your new PIN to access your account.

## Item: Submit Page

The screenshot shows the 'Submit Page' of the National Teacher and Principal Survey. At the top left is the Department of Education logo. The main header reads 'Principal Questionnaire National Teacher and Principal Survey 2015-16 School Year'. On the top right is the United States Census Bureau logo with the tagline 'Measuring America'. Below the header is a navigation bar with links for 'INSTRUCTIONS', 'FAQs', 'ENDORSERS', 'CONTACT US', and 'SAVE AND CONTINUE LATER'. The main content area contains the message: 'You have completed the National Teacher and Principal Survey Principal Questionnaire! Please click "Submit Data" to submit your responses to the U.S. Census Bureau. You will have the option to print a copy of your responses for your records on the next page.' Below this message are two buttons: 'Previous' and 'Submit Data'. At the bottom left, it says 'OMB NO.: 1850-0598 APPROVAL EXPIRES: 06/30/2018'. At the bottom right, it says 'BURDEN STATEMENT | ACCESSIBILITY | PRIVACY | SECURITY'.

“You have completed the School Survey on Crime and Safety!

Please click “Submit Data” to submit your responses to the U.S. Census Bureau. You will have the option to print a copy of your responses for your records on the next page.”

Previous (button)

Submit Data (Button)

### Skips:

- o Submit Data button should skip to Thank You Page.
- o Previous button should skip to the last question of the survey.

## Item: Thank You Page


DEPARTMENT OF EDUCATION  
Principal Questionnaire  
National Teacher and Principal Survey  
2015-16 School Year


Acting as Collection Agent  
United States  
**Census**  
Bureau  
Measuring America

Thank you very much for your participation in the 2015-16 National Teacher and Principal Survey  
Principal Questionnaire.

Your answers have been submitted to the U.S. Census Bureau. If you have any questions or would like to change a response, please contact us, toll-free, at: 1-888-595-1338 or by e-mail at [addp.education.surveys@census.gov](mailto:addp.education.surveys@census.gov).

Exit Survey

 If you would like a copy of your responses for your records, please click the PDF icon above.  
This copy is for your records only.

The letters PDF or the  icon indicate a document is in the [Portable Document Format \(PDF\)](#). To view the file you will need the [Adobe® Reader](#), which is available for **free** from the Adobe web site.

OMB NO.: 1850-0598  
APPROVAL EXPIRES: 06/30/2018

BURDEN STATEMENT | ACCESSIBILITY | PRIVACY | SECURITY

“Thank you very much for your participation in the 2017-18 School Survey on Crime and Safety.

Your answers have been submitted to the U.S. Census Bureau. If you have any questions or would like to change a response, please contact us, toll-free, at 1-888-595-1338 or by e-mail at [addp.education.surveys@census.gov](mailto:addp.education.surveys@census.gov).”

Exit Survey button

PDF icon

“If you would like a copy of your responses for your records, please click the PDF icon above.

This copy is for your records only.

The letters PDF or the {PDF icon} icon indicate a document is in the [Portable Document Format \(PDF\)](#). To view the file you will need the [Adobe® Reader](#), which is available for **free** from the Adobe web site.”

### Skips:

- Clicking the Exit Survey button skips to the log in page ([login](#)).
- Clicking the PDF icon should open the fillable pdf of the Principal Questionnaire with the respondent’s data filled in.
- [Portable Document Format \(PDF\)](#) should be a hyperlink to <http://www.adobe.com/products/acrobat/adobepdf.html?promoid=ISMSP>
- [Adobe® Reader](#) should be a hyperlink to <http://get.adobe.com/reader/>

## Item: Instructions Tab (instructions)

[Return to Survey \(button\)](#)

Text reads as below:

- Please use the 'Previous' and 'Next' buttons at the bottom of each page to navigate through the survey, rather than your browser's back button.
- The survey will take approximately 53 minutes to complete.
- Please complete and submit the survey within two weeks.
- Each time you complete a page, your answers are saved.
- If you do not have the time to dedicate to the entire survey now, you may complete what you are able to and log out. Your responses will be saved, and when you re-enter the survey, you will be taken to the question where you left off.
- Answers to frequently asked questions and a list of survey endorsers are available on the green menu bar.

Thank you for participation in the SSOCs!



**National Teacher and Principal Survey**  
NTPS Respondent Portal  
2017-18 School Year



[MAIN MENU](#)

[RESOURCES](#)

[CONTACT US](#)

[SAVE AND CONTINUE LATER](#)

**THIS SURVEY HAS BEEN ENDORSED BY:**

[RETURN TO RESOURCES](#)

- American Association of School Administrators
- American Association of School Librarians
- American Federation of Teachers
- American Montessori Society
- Association for Middle Level Education (formerly National Middle School Association)
- Association for Supervision and Curriculum Development
- Association of American Educators
- Council of the Great City Schools
- National Association of Elementary School Principals
- National Association of Secondary School Principals
- National Parent Teacher Association

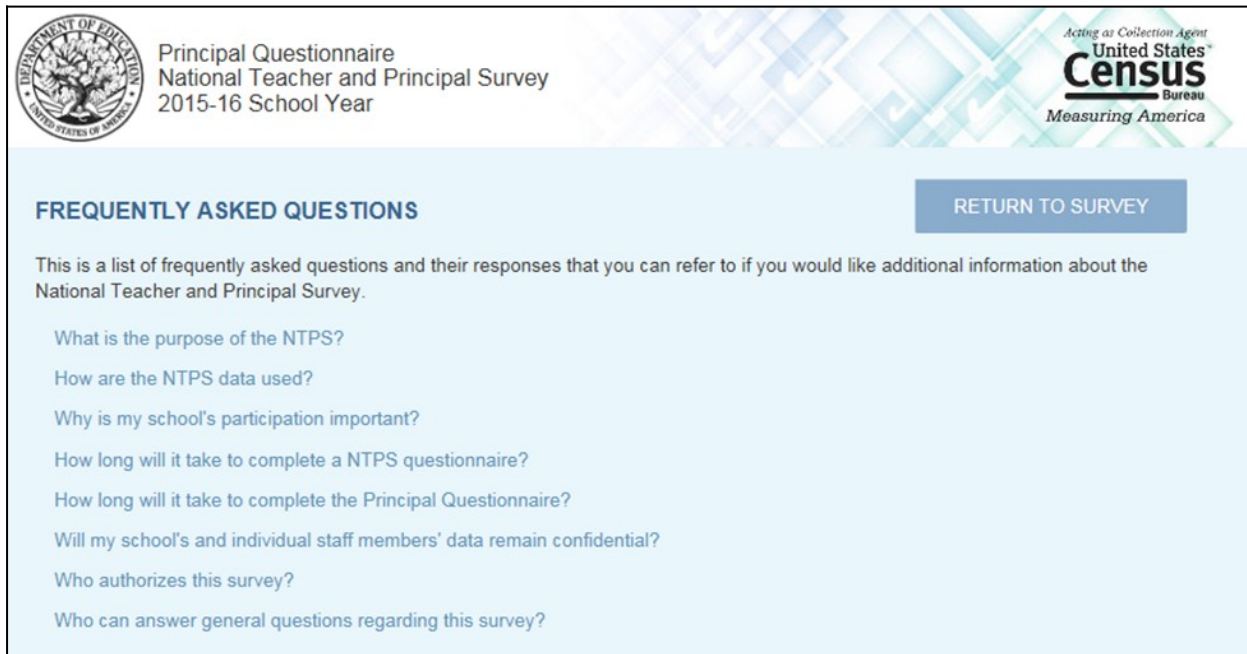
OMB NO.: 1850-0598  
APPROVAL EXPIRES:

[ACCESSIBILITY](#) | [SECURITY](#)

Text Reads as below:

This Survey Has Been Endorsed By:

- American Association of School Administrators
- American Federation of Teachers
- American School Counselors Association
- Association for Middle Level Education
- Association of American Educators
- Council of Chief State School Officers
- Education Northwest
- National Association of State Boards of Education
- National Association of Elementary School Principals
- National Association of School Resource Officers
- National Association of Secondary School Principals
- National Parent Teacher Association (PTA)
- National School Safety Center
- School Safety Advocacy Council
- University of California, Los Angeles (UCLA) Center for Mental Health in Schools
- National Association of School Psychologists
- School Social Work Association of America



Principal Questionnaire  
National Teacher and Principal Survey  
2015-16 School Year

Acting as Collection Agent  
**United States**  
Census  
Bureau  
Measuring America

### FREQUENTLY ASKED QUESTIONS

[RETURN TO SURVEY](#)

This is a list of frequently asked questions and their responses that you can refer to if you would like additional information about the National Teacher and Principal Survey.

- [What is the purpose of the NTPS?](#)
- [How are the NTPS data used?](#)
- [Why is my school's participation important?](#)
- [How long will it take to complete a NTPS questionnaire?](#)
- [How long will it take to complete the Principal Questionnaire?](#)
- [Will my school's and individual staff members' data remain confidential?](#)
- [Who authorizes this survey?](#)
- [Who can answer general questions regarding this survey?](#)

Each question is listed as a link. Move the screen down to the appropriate answer text when the user clicks on a question.

[Return to Survey](#) (button)

List the following questions as links. When clicked, display the appropriate answer text.

#### **Why did our school get selected?**

From all the public schools in the United States, we selected a random stratified sample of about 4,800 schools that represent the nation for the 2018 School Survey on Crime and Safety. Your school happened to be one of those selected. Your responses will represent schools with similar demographics that were not selected for the survey.

#### **What kinds of questions does the School Survey on Crime & Safety ask?**

- Frequency and types of crimes at schools, including homicide, rape, sexual assault, attacks with or without weapons, robbery, theft, and vandalism;
- Frequency and types of disciplinary actions such as removals, transfers, and suspensions for selected offenses;
- Perceptions of other disciplinary problems such as bullying, verbal abuse, and disorder in the classroom;
- Description of school policies and programs concerning crime and safety;
- Description of the pervasiveness of student and teacher involvement in efforts that are intended to prevent or reduce school violence;
- Mental health services available to students at school; and
- General school characteristics.

#### **What is the purpose of this survey?**

SSOCS is the primary source of school-level data on crime and safety for the U.S. Department of Education. This study collects information on school crime and safety from school principals in primary, middle, high, and combined schools across the United States. As an ongoing survey, the SSOCS measures changes over time on key issues.

Gathering this information will help schools compare their policies and programs to schools nationwide. It will also help researchers and policymakers identify trends in crime and safety across time and identify emerging problems or issues.

#### **Why should I participate in this survey?**

Although this is a voluntary survey, your cooperation is essential to make the results of this survey comprehensive, accurate, and timely. Policymakers and education leaders rely on data from this survey to inform their decisions concerning school programs and policies to reduce crime. Since it is a sample survey, your responses represent the responses of many schools that serve similar student populations. Higher response rates give us confidence that the findings are accurate.

#### **Who is conducting this survey?**

SSOCS is conducted by the National Center for Education Statistics (NCES), part of the Institute of Education Sciences (IES), within the United States Department of Education. The U.S. Census Bureau is collecting data on behalf of NCES. NCES is authorized to conduct this survey by the Education Sciences Reform Act of 2002 (ESRA 2002, 20 U.S.C. §9543). Participation is voluntary.

As part of the Department of Education, NCES fulfills a Congressional mandate to:

- Collect, collate, analyze and report complete statistics on the condition of American education;
- Conduct and publish reports; and
- Review and report on education activities internationally.

**How will my information be reported?**

The information you provide will be combined with the information provided by others in statistical reports. No individual data that links to your name, address, or telephone number will be included in the statistical reports.

**How will these data be used?**

These data are being collected for the U.S. Department of Education, National Center for Education Statistics (NCES).

Results from the study will be used to increase knowledge of policies and programs schools use to address school crime and safety. Results will also show comparisons on crime and safety data across time from the 2000, 2004, 2006, 2008, 2010, and 2016 surveys.

Summary data from the study will be placed into a public-use dataset for researchers and policy-makers. The dataset is rigorously tested prior to release to ensure no individual schools can be identified.

Reports will be published based on the SSOCS data. You will be able to compare your school's problems and policies with those of schools that are similar to yours.

**How often is the SSOCS administered?**

The SSOCS was administered in the spring of the 1999–2000, 2003–04, 2005–06, 2007–08, 2009–10, and 2015-16 school years. The SSOCS will now be administered every two years.

**Where can I see the results of the SSOCS?**

Downloadable reports from the 1999–2000, 2003–04, 2005–06, 2007–08, and 2009–10 collections of the SSOCS such as *Crime and Safety in America's Public Schools: Selected Findings from the School Survey on Crime and Safety* are available at <http://www.nces.ed.gov/surveys/ssocs>. Also included on the website is a table library with hundreds of tables that provide estimates on school crime and violence by selected school and student characteristics.

**How do I know this survey is legitimate?**

You can verify the legitimacy of our survey or find out more information on the survey's website at [www.nces.ed.gov/surveys/ssocs](http://www.nces.ed.gov/surveys/ssocs). You may also contact the Census Bureau at 1-800-221-1204 or by email at [addp.education.surveys@census.gov](mailto:addp.education.surveys@census.gov).

**How long will the survey take to complete?**

The length of the survey will depend on the characteristics of your school, but for most people it will take about 53 minutes to complete. That time includes time spent filling out the survey itself and referring to additional information sources for the information requested.

**What is the importance of this survey!**

Measuring the extent of school crime is important for many reasons. The safety of students and teachers is a primary concern, but the nature and frequency of school crime have other important implications as well. Safety and discipline are necessary for effective education. In order to learn, students need a secure environment where they can concentrate on their studies. Dealing with school crime requires school resources. Gathering this information should help researchers and policy-makers devise strategies to address these problems in our schools.

**Who authorizes this survey?**

The U.S. Census Bureau is administering this survey for NCES as authorized by the Education Sciences Reform Act of 2002 (ESRA 2002, 20 U.S.C. §9543). The Office of Management and Budget (OMB) approved this survey. The OMB control number is 1850-0761 and the approval expiration date is XX/XX/2020.

**Who can answer general questions regarding this survey?**

Please contact the U.S. Census Bureau at 1-888-595-1338 if you have any questions about the survey. Someone will be available to take your call Monday through Friday, between 8:00 a.m. and 8:00 p.m. (Eastern Time). At any other time, please leave a message and someone will return your call as soon as possible. The U.S. Census Bureau is also available to answer your questions via e-mail at [addp.education.surveys@census.gov](mailto:addp.education.surveys@census.gov).

- A 'Go back to FAQ list' button is provided after the answer to each question. This button returns the user to the top of the page where all questions are displayed.

## Item: Contact Us Tab (contact\_us)

**National Teacher and Principal Survey**  
NTPS Respondent Portal  
2017-18 School Year

Acting as Collection Agent  
**United States**  
**Census**  
Bureau  
Measuring America

MAIN MENU RESOURCES CONTACT US SAVE AND CONTINUE LATER

**CONTACT US** RETURN TO MAIN MENU

E-mail us: [ntps@census.gov](mailto:ntps@census.gov)  
Call us: 1-888-595-1338  
Someone will be available to take your call Monday through Friday, between 8:00 a.m. and 8:00 p.m. (Eastern Time).

OMB NO.: 1850-0598 APPROVAL EXPIRES ACCESSIBILITY | SECURITY

Text Reads (in black font):

“CONTACT US Return to Survey (button)  
Email us: [addp.education.surveys@census.gov](mailto:addp.education.surveys@census.gov)  
Call us: 1-888-595-1338  
Someone will be available to take your call Monday through Friday, between 8:00 a.m. and 8:00 p.m. (Eastern Time).”

## Item: Definitions Tab (definitions)

[Return to Survey \(button\)](#)

This will include terms and definitions that will be identical to the Definitions page on the paper version of the questionnaire (Appendix B).

## Item: Accessibility Screen (accessibility)

- Return to Survey (button)
- This screen is accessible by clicking on the “Accessibility” link at the bottom of the page.

**Text Reads As:**

### Accessibility

The Census Bureau is committed to making online forms and other public documents on its Internet server accessible to all. Currently, we are reviewing our web sites and making modifications to those pages, which are not in compliance with the Americans with Disabilities Act. We use Hypertext Markup Language (HTML) to create pages that are generally accessible to persons using screen-reading devices, and we are careful in our construction of HTML documents to ensure maximum accessibility. We include alternate text describing graphics.

Many Census Bureau Internet documents are in ASCII or HTML formats. These documents are accessible to persons using screen-reading software. We also have a large number of documents in Adobe Acrobat PDF (Portable Document Format) files. Currently, many people using screen-reading devices cannot read documents in PDF format, specifically those that were created from a scanned hard copy.

Adobe Systems, Inc. is producing various products designed to make Adobe Acrobat documents accessible to persons using screen-reading software. Adobe's [accessibility web pages](#) describe their efforts.

To allow us to better serve those with visual disabilities who are having difficulty accessing PDF documents; you may contact us directly for further assistance at 301-763-INFO (4636), 800-923-8282, or by submitting a request at [ask.census.gov](http://ask.census.gov).

## Item: Security Screen (security)

- Return to Survey (button).
- This screen is accessible by clicking on the “Security” link at the bottom of the page.



**Text Reads As:**“Data are Encrypted at all Times

Our secure servers use Hypertext Transfer Protocol over Secure Socket Layer (HTTPS) to ensure the encrypted transmission of data between your browser and the U.S. Census Bureau. This means that instead of sending readable text over the Internet, both your browser and our servers encode (scramble) all text using a security key. That way, personal data sent to your browser and data you send back are extremely difficult to decode in the unlikely event of interception by an unauthorized party. As a result of this, your browser must be capable of using the required encryption protocol and strength in order to connect to our servers. If you cannot connect to our secure servers, please upgrade to a newer browser.

Third Party Identity Proofing

Our secure servers use a digital certificate (digital ID) issued by a trusted, third party Certificate Authority (CA) as proof of identity. The only way to be sure of a web site's authenticity is to view their digital ID. In this way, you can be assured that you are not being "spoofed" or tricked by an imposter. The digital ID will contain information such as the name of the organization that owns the web site, the site's registered internet name/address, and the name of the Certification Authority under which the digital ID was issued. The method for viewing a web site's Digital Certificate/ID varies depending on the web browser. Please see your browser's "Help" information for instructions on how to verify a web site's identity. “

**Header**

<SSOCS logo> <School Survey on Crime and Safety (SSOCS)>  
<Publications & Products> <SSOCS & SCS Table Library> <Staff>

**Left panel**

<Overview>  
<Survey Topics>  
<Data Products>  
<Questionnaires>  
<Join NewsFlash>

<Overview>

The School Survey on Crime and Safety (SSOCS) is the primary source of school-level data on crime and safety for the U.S. Department of Education, National Center for Education Statistics (NCES). The SSOCS is a nationally representative cross-sectional survey of public elementary and secondary schools. To find out more information about SSOCS, please click on the questions below.

I. What is SSOCS?

The School Survey on Crime and Safety (SSOCS) is the National Center for Education Statistics' sample survey of the nation's public schools designed to provide estimates of school crime, discipline, disorder, programs and policies. SSOCS is administered to public primary, middle, high, and combined school principals in the spring of even-numbered school years.

II. Who participates in SSOCS?

SSOCS is administered during the spring of the school year to allow principals to report the most complete information possible. SSOCS was first administered to principals in the spring of the 1999–2000 school year. It has since been administered in the springs of the 2003–04, 2005–06, 2007–08, 2009–10, and 2015–16 school years. It will be administered again in the spring of the 2017–18 school year. Sampling details for each SSOCS administration can be found in its data products.

III. When is SSOCS administered?

Over 3,000 public school principals are selected to receive the SSOCS questionnaire. The SSOCS sample is large enough to provide national estimates of all public schools, while taking into account a number of factors, including the level of instruction, student enrollment size, and urbanicity.

IV. What topics are covered by SSOCS?

The SSOCS questionnaire asks principals to report on a variety of topics related to crime and safety, including:

- School Practices and Programs,
- Parent and Community Involvement at School,
- School Security,
- Staff Training,
- Limitations on Crime Prevention,
- Frequency of Crime and Violence at School,
- Frequency of incidents reported to police or law enforcement,
- Frequency of hate crimes, gang-related crimes, and gang-related hate crimes,
- Disciplinary problems and disciplinary actions, and
- Other school characteristics related to school crime.

V. Where can I learn more about SSOCS and other crime and safety data collections?

The SSOCS [Publications and Products](#) page contains SSOCS data products, reports, and other publications. The [Crime and Safety Surveys](#) page has information on SSOCS and other surveys.

<Survey Topics>

Sections of the SSOCS questionnaire are composed of items about specific topics. Click on the section name to read more about these topics.

I. School Practices and Programs

The first section of SSOCS, entitled "School Practices and Programs," addresses current school practices and programs relating to crime and discipline. Numerous practices and programs are included in this section to inform procedures by which schools attempt to prevent and reduce crime, disorder, and violence, as well as procedures to ensure the most effective response to a myriad of potential crisis situations. Although the data are not intended to be used to evaluate the state of national school practices, the variables detailed in this section arguably present a foundation from which policymakers and researchers can begin to understand environments in which crime occurs and may be used as a catalyst for influencing safer schools

- II. Parent and Community Involvement at School  
The second section of SSOCS, "Parent and Community Involvement at School," seeks to collect information about efforts on behalf of schools to involve parents in maintaining school discipline and in responding to student problem behaviors. It also addresses the level of parent or guardian participation in school-related activities. This section additionally seeks to inform the extent to which community groups and related organizations and agencies are involved in schools' efforts to promote safe schools, including juvenile justice agencies, social service agencies, and religious organizations.
- III. School Security  
This third section of SSOCS, "School Security," asks respondents about the presence of security guards, security personnel, and sworn law enforcement officers at their school. These questions seek to collect data that will illustrate the coexistence of the presence of these personnel and reports of school crime. This section also asks the respondent questions about the presence of school security during various times throughout the school day and after school hours, the number of full- and part-time security employees, whether they were armed, as well as their participation in particular school activities such as training teachers and staff in school safety or crime prevention and mentoring students.
- IV. Staff Training  
The fourth section of SSOCS, entitled "Staff Training," asks respondents about training provided by the school or school district for classroom teachers or aides. Topics addressed include classroom management, school-wide discipline policies and practices related to violence, safety procedures, and the identification of potentially violent students and those that are using illegal substances. This section also inquires about training for positive behavioral intervention strategies. A school's use of such profiles may affect school-wide levels of discipline, yet also serve to achieve prevention through student-specific targeted interventions.
- V. Limitations on Crime Prevention  
The fifth section of SSOCS, entitled "Limitations on Crime Prevention," asks respondents whether their efforts to reduce or prevent crime have been constrained by any factors related to teachers, parents, students, or administrative policies. Such limitations include inadequate teacher training or lack of teacher support for school policies, likelihood of complaints from parents, fear of student retaliation, and federal, state, or district policies on discipline and safety. The data from this section can be used to determine whether these limitations are indeed correlated with school crime.
- VI. Frequency of Crime and Violence at School  
The sixth section of SSOCS, entitled "Frequency of Crime and Violence at School," focuses on the incidence of homicides and shootings that occur at school. Fortunately, incidents of this type are rare; therefore estimates based on these measures will not be reported.
- VII. Number of Incidents  
The seventh section of SSOCS, "Number of Incidents," asks respondents about the frequency of a range of serious criminal incidents recorded as occurring on their school campuses. It is important to note that this section refers to specific incidents, not the number of victims or offenders, and the respondent was asked to include recorded incidents committed by both students and non-students. In addition to the total number of recorded incidents, respondents were asked to report how many of the recorded incidents were reported to the police. The criminal incidents this section discusses include rape, robbery, physical attack, theft, possession of a weapon, alcohol or illegal drugs, and vandalism. It also asks for the number of hate crimes, gang-related crimes, and gang-related hate crimes, as well as the number of disruptions such as death or bomb threats, and chemical, biological, or radiological threats.
- VIII. Disciplinary Problems and Actions  
The eighth section of SSOCS, entitled "Disciplinary Problems and Actions," asks about the degree to which schools face a variety of disciplinary problems and their response. School administrators were asked about the availability and use of a number of disciplinary actions, as well as the use of disciplinary actions including removals from school, transfers, and out-of-school suspensions for specified offenses. The data provided by this section will be helpful in assessing the impact of schools' control of lesser violations, as well as providing another measure of the disciplinary measures used in U.S. schools.
- IX. School Characteristics  
The ninth section of SSOCS, entitled "School Characteristics," asks respondents about the structural characteristics of the school campus and features of the student body. Variables include total enrollment, English proficiency, percentage of students eligible for free or reduced-price lunch, percentage male enrollment, typical number of classroom changes, level of crime where the school is located and in the areas where students live, and the number of student transfers in and out of their particular school. Correlating these characteristics with incidence of crime and safety practices will assist in developing targeted efforts to address the specific needs of schools.

<Data Products>

Public-use data files from past iterations of SSOCS can be downloaded in various software formats by clicking on the links below. Survey documentation can be viewed, downloaded, and printed as PDF files. ASCII files are below and can be used with the setup files provided to read in data to formats that are not provided on this page. To request access to restricted-use SSOCS data, please visit the [restricted-use data licenses page](#).



School Survey on Crime and Safety (SSOCS)

- [2009-10 SSOCS Data Products](#) (link goes to section below)
- [2007-08 SSOCS Data Products](#) (link goes to section below)
- [2005-06 SSOCS Data Products](#) (link goes to section below)
- [2003-04 SSOCS Data Products](#) (link goes to section below)
- [1999-2000 SSOCS Data Products](#) (link goes to section below)

---

2009-10 SSOCS Data Products  
Data Files

[Top](#)

---

2007-08 SSOCS Data Products  
Data Files  
*SAS Files*  
*SPSS File*  
*STATA File*  
*ASCII (Text) Files*  
Data Documentation

[Top](#)

---

2005-06 SSOCS Data Products  
Data Files  
*SAS Files*  
*SPSS File*  
*STATA File*  
*ASCII (Text) Files*  
Data Documentation

[Top](#)

---

2003-04 SSOCS Data Products  
Data Files  
*SAS Files*  
*SPSS File*  
*ASCII (Text) Files*  
Data Documentation

[Top](#)

---

1999-2000 SSOCS Data Products  
Data Files  
*SSOCS Public-Use Data CD-ROM*  
*SAS Files*  
*SPSS Files*  
*STATA File*  
*ASCII (Text) Files*  
Data Documentation

<Questionnaires>

The questionnaires below can be viewed, downloaded, and printed as PDF files.

Downloadable Questionnaires  
<list of questionnaires>

Visit the [help section](#) for help on viewing, downloading, and printing PDF files.

<[Join NewsFlash](#)> (link goes to NCES NewsFlash homepage for viewers to sign up)

**Header: <Publications and Products>**

<Data Products>

List of SSOCS-related products

<Reports>

List of products including SSOCS data (Condition of Education, Indicators of School Crime)

<Shorter Publications>

List of brochures

**Header: <SSOCS & SCS Table Library>**

(each bullet links to a drop-down menu of a list of tables related to that topic)


- [Bullying and Cyber-bullying](#)
- [Disciplinary Problems and Actions](#)
- [Disruptions and Threats](#)
- [Drugs, Alcohol, and Illegal Substances](#)
- [Fear and Avoidance](#)
- [Firearms, Explosives & Other Weapons](#)
- [Gangs and Hate Crimes](#)
- [Parent and Community Involvement](#)
- [Physical Fights, Assaults & Sexual Harassment](#)
- [Prevention Programs and Training](#)
- [Security Practices & Rules](#)
- [Violent Crimes and Theft](#)
- [Student Experiences](#)

SSOCS is a nationally representative sample of regular public elementary, middle, secondary and combined schools. Completed by school principals, the survey asks about school safety practices, school violence prevention programs, and the frequency of school crime and violence.

SCS is a national survey of students ages 12 through 18 in U.S. public and private elementary, middle, and high schools. Created as a supplement to the NCVS, SCS collects information about characteristics of school-related crime, victimization, and safety.

- [View complete list of SSOCS and SCS data tables.](#) (this link goes to a page with a complete listing of all crime-related tables)

Clicking on a plus sign (+) will display the contents of a publication. Clicking on "Show All" will open all sections and sub-sections, including all tables. Click on the minus sign (-) or "Hide All" to close sections.

 indicates a recently added or modified table.

**Header: <Staff>**

**Survey Area:** [Crime and Safety Surveys - CSS](#)

Staff: [Hansen, Rachel](#)