

# Answer Sheet A

## Instructions

OMB Control No. 0693-0043  
Expiration Date 12-31-2018

Compare the following 20 pairs of face images. Reduced-sized versions of the images are included here for reference. However, in making your comparisons, you should use the high-resolution versions sent from the PI. If you did not receive instructions for downloading the pairs from NIST's secure fileserver, you should contact the PI, either by email ([jonathon.phillips@nist.gov](mailto:jonathon.phillips@nist.gov)) or by phone (301-975-5348).

For each image pair, rate the similarity on a 7-point scale. Then rate the easiness or difficulty on making the comparison on a 5-point scale.

Please do not consult or discuss this study with friends, family, or colleagues from your institution or other institutions.

If you have any questions, please do not hesitate to contact the PI either by email ([jonathon.phillips@nist.gov](mailto:jonathon.phillips@nist.gov)) or by phone (301-975-5348). Email is preferred.

You may go back and edit any previously entered ratings until you hit "Submit." Once you click "Submit," your submission is finalized. Before you click "Submit," you may access this survey in multiple sessions during the course of the experiment via the link emailed to you. You may withdraw up until you finalize your submission.

Next

0%



# Answer Sheet A

## Pair 01

OMB Control No. 0693-0043  
Expiration Date 12-31-2018



1. Based on your observations, how alike are the persons in Pair 01?

- +3: The observations strongly support that it is the same person
- +2: The observations support that it is the same person
- +1: The observations support to some extent that it is the same person
- 0: The observations support neither that it is the same person nor that it is different persons
- 1: The observations support to some extent that it is not the same person
- 2: The observations support that it is not the same person
- 3: The observations strongly support that it is not the same person

2. How easy or difficult was it to make the comparison determination?

- 1 - Easy: The comparison was easier than most facial comparisons
- 2 - Moderate: The comparison was a typical facial comparison
- 3 - Difficult: The comparison was more difficult than most facial comparisons
- 4 - Very difficult: The comparison was unusually difficult, involving significant photometric, illumination, or pose changes, other red flags
- 5 - Not possible: The comparison was virtually impossible, due to a lack of detail in the image(s)

Back

Next

4%

# Answer Sheet A

## Pair 02

OMB Control No. 0693-0043  
Expiration Date 12-31-2018



3. Based on your observations, how alike are the persons in Pair 02?

- +3: The observations strongly support that it is the same person
- +2: The observations support that it is the same person
- +1: The observations support to some extent that it is the same person
- 0: The observations support neither that it is the same person nor that it is different persons
- 1: The observations support to some extent that it is not the same person
- 2: The observations support that it is not the same person
- 3: The observations strongly support that it is not the same person

4. How easy or difficult was it to make the comparison determination?

- 1 - Easy: The comparison was easier than most facial comparisons
- 2 - Moderate: The comparison was a typical facial comparison
- 3 - Difficult: The comparison was more difficult than most facial comparisons
- 4 - Very difficult: The comparison was unusually difficult, involving significant photometric, illumination, or pose changes, other red flags
- 5 - Not possible: The comparison was virtually impossible, due to a lack of detail in the image(s)

Back

Next

9%

# Answer Sheet A

## Pair 03

OMB Control No. 0693-0043  
Expiration Date 12-31-2018



5. Based on your observations, how alike are the persons in Pair 03?

- +3: The observations strongly support that it is the same person
- +2: The observations support that it is the same person
- +1: The observations support to some extent that it is the same person
- 0: The observations support neither that it is the same person nor that it is different persons
- 1: The observations support to some extent that it is not the same person
- 2: The observations support that it is not the same person
- 3: The observations strongly support that it is not the same person

6. How easy or difficult was it to make the comparison determination?

- 1 - Easy: The comparison was easier than most facial comparisons
- 2 - Moderate: The comparison was a typical facial comparison
- 3 - Difficult: The comparison was more difficult than most facial comparisons
- 4 - Very difficult: The comparison was unusually difficult, involving significant photometric, illumination, or pose changes, other red flags
- 5 - Not possible: The comparison was virtually impossible, due to a lack of detail in the image(s)

Back

Next

13%



# Answer Sheet A

## Pair 04

OMB Control No. 0693-0043  
Expiration Date 12-31-2018



7. Based on your observations, how alike are the persons in Pair 04?

- +3: The observations strongly support that it is the same person
- +2: The observations support that it is the same person
- +1: The observations support to some extent that it is the same person
- 0: The observations support neither that it is the same person nor that it is different persons
- 1: The observations support to some extent that it is not the same person
- 2: The observations support that it is not the same person
- 3: The observations strongly support that it is not the same person

8. How easy or difficult was it to make the comparison determination?

- 1 - Easy: The comparison was easier than most facial comparisons
- 2 - Moderate: The comparison was a typical facial comparison
- 3 - Difficult: The comparison was more difficult than most facial comparisons
- 4 - Very difficult: The comparison was unusually difficult, involving significant photometric, illumination, or pose changes, other red flags
- 5 - Not possible: The comparison was virtually impossible, due to a lack of detail in the image(s)

Back

Next

17%

# Answer Sheet A

## Pair 05

OMB Control No. 0693-0043  
Expiration Date 12-31-2018



9. Based on your observations, how alike are the persons in Pair 05?

- +3: The observations strongly support that it is the same person
- +2: The observations support that it is the same person
- +1: The observations support to some extent that it is the same person
- 0: The observations support neither that it is the same person nor that it is different persons
- 1: The observations support to some extent that it is not the same person
- 2: The observations support that it is not the same person
- 3: The observations strongly support that it is not the same person

10. How easy or difficult was it to make the comparison determination?

- 1 - Easy: The comparison was easier than most facial comparisons
- 2 - Moderate: The comparison was a typical facial comparison
- 3 - Difficult: The comparison was more difficult than most facial comparisons
- 4 - Very difficult: The comparison was unusually difficult, involving significant photometric, illumination, or pose changes, other red flags
- 5 - Not possible: The comparison was virtually impossible, due to a lack of detail in the image(s)

Back

Next

22%

# Answer Sheet A

## Pair 06

OMB Control No. 0693-0043  
Expiration Date 12-31-2018



11. Based on your observations, how alike are the persons in Pair 06?

- +3: The observations strongly support that it is the same person
- +2: The observations support that it is the same person
- +1: The observations support to some extent that it is the same person
- 0: The observations support neither that it is the same person nor that it is different persons
- 1: The observations support to some extent that it is not the same person
- 2: The observations support that it is not the same person
- 3: The observations strongly support that it is not the same person

12. How easy or difficult was it to make the comparison determination?

- 1 - Easy: The comparison was easier than most facial comparisons
- 2 - Moderate: The comparison was a typical facial comparison
- 3 - Difficult: The comparison was more difficult than most facial comparisons
- 4 - Very difficult: The comparison was unusually difficult, involving significant photometric, illumination, or pose changes, other red flags
- 5 - Not possible: The comparison was virtually impossible, due to a lack of detail in the image(s)

Back

Next

26%

# Answer Sheet A

## Pair 07

OMB Control No. 0693-0043  
Expiration Date 12-31-2018



13. Based on your observations, how alike are the persons in Pair 07?

- +3: The observations strongly support that it is the same person
- +2: The observations support that it is the same person
- +1: The observations support to some extent that it is the same person
- 0: The observations support neither that it is the same person nor that it is different persons
- 1: The observations support to some extent that it is not the same person
- 2: The observations support that it is not the same person
- 3: The observations strongly support that it is not the same person

14. How easy or difficult was it to make the comparison determination?

- 1 - Easy: The comparison was easier than most facial comparisons
- 2 - Moderate: The comparison was a typical facial comparison
- 3 - Difficult: The comparison was more difficult than most facial comparisons
- 4 - Very difficult: The comparison was unusually difficult, involving significant photometric, illumination, or pose changes, other red flags
- 5 - Not possible: The comparison was virtually impossible, due to a lack of detail in the image(s)

Back

Next

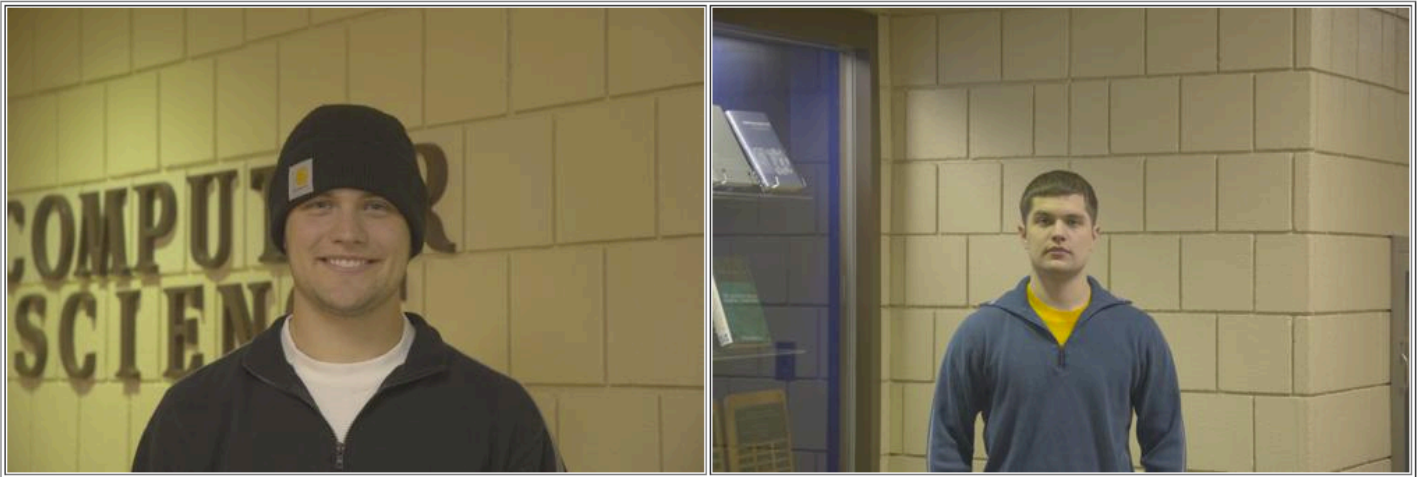
30%



# Answer Sheet A

## Pair 08

OMB Control No. 0693-0043  
Expiration Date 12-31-2018



15. Based on your observations, how alike are the persons in Pair 08?

- +3: The observations strongly support that it is the same person
- +2: The observations support that it is the same person
- +1: The observations support to some extent that it is the same person
- 0: The observations support neither that it is the same person nor that it is different persons
- 1: The observations support to some extent that it is not the same person
- 2: The observations support that it is not the same person
- 3: The observations strongly support that it is not the same person

16. How easy or difficult was it to make the comparison determination?

- 1 - Easy: The comparison was easier than most facial comparisons
- 2 - Moderate: The comparison was a typical facial comparison
- 3 - Difficult: The comparison was more difficult than most facial comparisons
- 4 - Very difficult: The comparison was unusually difficult, involving significant photometric, illumination, or pose changes, other red flags
- 5 - Not possible: The comparison was virtually impossible, due to a lack of detail in the image(s)

Back

Next

35%



# Answer Sheet A

## Pair 09

OMB Control No. 0693-0043  
Expiration Date 12-31-2018



17. Based on your observations, how alike are the persons in Pair 09?

- +3: The observations strongly support that it is the same person
- +2: The observations support that it is the same person
- +1: The observations support to some extent that it is the same person
- 0: The observations support neither that it is the same person nor that it is different persons
- 1: The observations support to some extent that it is not the same person
- 2: The observations support that it is not the same person
- 3: The observations strongly support that it is not the same person

18. How easy or difficult was it to make the comparison determination?

- 1 - Easy: The comparison was easier than most facial comparisons
- 2 - Moderate: The comparison was a typical facial comparison
- 3 - Difficult: The comparison was more difficult than most facial comparisons
- 4 - Very difficult: The comparison was unusually difficult, involving significant photometric, illumination, or pose changes, other red flags
- 5 - Not possible: The comparison was virtually impossible, due to a lack of detail in the image(s)

Back

Next

39%

# Answer Sheet A

## Pair 10

OMB Control No. 0693-0043  
Expiration Date 12-31-2018



19. Based on your observations, how alike are the persons in Pair 10?

- +3: The observations strongly support that it is the same person
- +2: The observations support that it is the same person
- +1: The observations support to some extent that it is the same person
- 0: The observations support neither that it is the same person nor that it is different persons
- 1: The observations support to some extent that it is not the same person
- 2: The observations support that it is not the same person
- 3: The observations strongly support that it is not the same person

20. How easy or difficult was it to make the comparison determination?

- 1 - Easy: The comparison was easier than most facial comparisons
- 2 - Moderate: The comparison was a typical facial comparison
- 3 - Difficult: The comparison was more difficult than most facial comparisons
- 4 - Very difficult: The comparison was unusually difficult, involving significant photometric, illumination, or pose changes, other red flags
- 5 - Not possible: The comparison was virtually impossible, due to a lack of detail in the image(s)

Back

Next

43%

# Answer Sheet A

## Pair 11

OMB Control No. 0693-0043  
Expiration Date 12-31-2018



21. Based on your observations, how alike are the persons in Pair 11?

- +3: The observations strongly support that it is the same person
- +2: The observations support that it is the same person
- +1: The observations support to some extent that it is the same person
- 0: The observations support neither that it is the same person nor that it is different persons
- 1: The observations support to some extent that it is not the same person
- 2: The observations support that it is not the same person
- 3: The observations strongly support that it is not the same person

22. How easy or difficult was it to make the comparison determination?

- 1 - Easy: The comparison was easier than most facial comparisons
- 2 - Moderate: The comparison was a typical facial comparison
- 3 - Difficult: The comparison was more difficult than most facial comparisons
- 4 - Very difficult: The comparison was unusually difficult, involving significant photometric, illumination, or pose changes, other red flags
- 5 - Not possible: The comparison was virtually impossible, due to a lack of detail in the image(s)

Back

Next

48%

# Answer Sheet A

## Pair 12

OMB Control No. 0693-0043  
Expiration Date 12-31-2018



23. Based on your observations, how alike are the persons in Pair 12?

- +3: The observations strongly support that it is the same person
- +2: The observations support that it is the same person
- +1: The observations support to some extent that it is the same person
- 0: The observations support neither that it is the same person nor that it is different persons
- 1: The observations support to some extent that it is not the same person
- 2: The observations support that it is not the same person
- 3: The observations strongly support that it is not the same person

24. How easy or difficult was it to make the comparison determination?

- 1 - Easy: The comparison was easier than most facial comparisons
- 2 - Moderate: The comparison was a typical facial comparison
- 3 - Difficult: The comparison was more difficult than most facial comparisons
- 4 - Very difficult: The comparison was unusually difficult, involving significant photometric, illumination, or pose changes, other red flags
- 5 - Not possible: The comparison was virtually impossible, due to a lack of detail in the image(s)

Back

Next

52%



# Answer Sheet A

## Pair 13

OMB Control No. 0693-0043  
Expiration Date 12-31-2018



25. Based on your observations, how alike are the persons in Pair 13?

- +3: The observations strongly support that it is the same person
- +2: The observations support that it is the same person
- +1: The observations support to some extent that it is the same person
- 0: The observations support neither that it is the same person nor that it is different persons
- 1: The observations support to some extent that it is not the same person
- 2: The observations support that it is not the same person
- 3: The observations strongly support that it is not the same person

26. How easy or difficult was it to make the comparison determination?

- 1 - Easy: The comparison was easier than most facial comparisons
- 2 - Moderate: The comparison was a typical facial comparison
- 3 - Difficult: The comparison was more difficult than most facial comparisons
- 4 - Very difficult: The comparison was unusually difficult, involving significant photometric, illumination, or pose changes, other red flags
- 5 - Not possible: The comparison was virtually impossible, due to a lack of detail in the image(s)

Back

Next

57%



# Answer Sheet A

## Pair 14

OMB Control No. 0693-0043  
Expiration Date 12-31-2018



27. Based on your observations, how alike are the persons in Pair 14?

- +3: The observations strongly support that it is the same person
- +2: The observations support that it is the same person
- +1: The observations support to some extent that it is the same person
- 0: The observations support neither that it is the same person nor that it is different persons
- 1: The observations support to some extent that it is not the same person
- 2: The observations support that it is not the same person
- 3: The observations strongly support that it is not the same person

28. How easy or difficult was it to make the comparison determination?

- 1 - Easy: The comparison was easier than most facial comparisons
- 2 - Moderate: The comparison was a typical facial comparison
- 3 - Difficult: The comparison was more difficult than most facial comparisons
- 4 - Very difficult: The comparison was unusually difficult, involving significant photometric, illumination, or pose changes, other red flags
- 5 - Not possible: The comparison was virtually impossible, due to a lack of detail in the image(s)

Back

Next

61%

# Answer Sheet A

## Pair 15

OMB Control No. 0693-0043  
Expiration Date 12-31-2018



29. Based on your observations, how alike are the persons in Pair 15?

- +3: The observations strongly support that it is the same person
- +2: The observations support that it is the same person
- +1: The observations support to some extent that it is the same person
- 0: The observations support neither that it is the same person nor that it is different persons
- 1: The observations support to some extent that it is not the same person
- 2: The observations support that it is not the same person
- 3: The observations strongly support that it is not the same person

30. How easy or difficult was it to make the comparison determination?

- 1 - Easy: The comparison was easier than most facial comparisons
- 2 - Moderate: The comparison was a typical facial comparison
- 3 - Difficult: The comparison was more difficult than most facial comparisons
- 4 - Very difficult: The comparison was unusually difficult, involving significant photometric, illumination, or pose changes, other red flags
- 5 - Not possible: The comparison was virtually impossible, due to a lack of detail in the image(s)

Back

Next

65%

# Answer Sheet A

## Pair 16

OMB Control No. 0693-0043  
Expiration Date 12-31-2018



31. Based on your observations, how alike are the persons in Pair 16?

- +3: The observations strongly support that it is the same person
- +2: The observations support that it is the same person
- +1: The observations support to some extent that it is the same person
- 0: The observations support neither that it is the same person nor that it is different persons
- 1: The observations support to some extent that it is not the same person
- 2: The observations support that it is not the same person
- 3: The observations strongly support that it is not the same person

32. How easy or difficult was it to make the comparison determination?

- 1 - Easy: The comparison was easier than most facial comparisons
- 2 - Moderate: The comparison was a typical facial comparison
- 3 - Difficult: The comparison was more difficult than most facial comparisons
- 4 - Very difficult: The comparison was unusually difficult, involving significant photometric, illumination, or pose changes, other red flags
- 5 - Not possible: The comparison was virtually impossible, due to a lack of detail in the image(s)

Back

Next

70%

# Answer Sheet A

## Pair 17

OMB Control No. 0693-0043  
Expiration Date 12-31-2018



33. Based on your observations, how alike are the persons in Pair 17?

- +3: The observations strongly support that it is the same person
- +2: The observations support that it is the same person
- +1: The observations support to some extent that it is the same person
- 0: The observations support neither that it is the same person nor that it is different persons
- 1: The observations support to some extent that it is not the same person
- 2: The observations support that it is not the same person
- 3: The observations strongly support that it is not the same person

34. How easy or difficult was it to make the comparison determination?

- 1 - Easy: The comparison was easier than most facial comparisons
- 2 - Moderate: The comparison was a typical facial comparison
- 3 - Difficult: The comparison was more difficult than most facial comparisons
- 4 - Very difficult: The comparison was unusually difficult, involving significant photometric, illumination, or pose changes, other red flags
- 5 - Not possible: The comparison was virtually impossible, due to a lack of detail in the image(s)

Back

Next

74%



# Answer Sheet A

## Pair 18

OMB Control No. 0693-0043  
Expiration Date 12-31-2018



35. Based on your observations, how alike are the persons in Pair 18?

- +3: The observations strongly support that it is the same person
- +2: The observations support that it is the same person
- +1: The observations support to some extent that it is the same person
- 0: The observations support neither that it is the same person nor that it is different persons
- 1: The observations support to some extent that it is not the same person
- 2: The observations support that it is not the same person
- 3: The observations strongly support that it is not the same person

36. How easy or difficult was it to make the comparison determination?

- 1 - Easy: The comparison was easier than most facial comparisons
- 2 - Moderate: The comparison was a typical facial comparison
- 3 - Difficult: The comparison was more difficult than most facial comparisons
- 4 - Very difficult: The comparison was unusually difficult, involving significant photometric, illumination, or pose changes, other red flags
- 5 - Not possible: The comparison was virtually impossible, due to a lack of detail in the image(s)

Back

Next

78%



# Answer Sheet A

## Pair 19

OMB Control No. 0693-0043  
Expiration Date 12-31-2018



37. Based on your observations, how alike are the persons in Pair 19?

- +3: The observations strongly support that it is the same person
- +2: The observations support that it is the same person
- +1: The observations support to some extent that it is the same person
- 0: The observations support neither that it is the same person nor that it is different persons
- 1: The observations support to some extent that it is not the same person
- 2: The observations support that it is not the same person
- 3: The observations strongly support that it is not the same person

38. How easy or difficult was it to make the comparison determination?

- 1 - Easy: The comparison was easier than most facial comparisons
- 2 - Moderate: The comparison was a typical facial comparison
- 3 - Difficult: The comparison was more difficult than most facial comparisons
- 4 - Very difficult: The comparison was unusually difficult, involving significant photometric, illumination, or pose changes, other red flags
- 5 - Not possible: The comparison was virtually impossible, due to a lack of detail in the image(s)

Back

Next

83%

# Answer Sheet A

## Pair 20

OMB Control No. 0693-0043  
Expiration Date 12-31-2018



39. Based on your observations, how alike are the persons in Pair 20?

- +3: The observations strongly support that it is the same person
- +2: The observations support that it is the same person
- +1: The observations support to some extent that it is the same person
- 0: The observations support neither that it is the same person nor that it is different persons
- 1: The observations support to some extent that it is not the same person
- 2: The observations support that it is not the same person
- 3: The observations strongly support that it is not the same person

40. How easy or difficult was it to make the comparison determination?

- 1 - Easy: The comparison was easier than most facial comparisons
- 2 - Moderate: The comparison was a typical facial comparison
- 3 - Difficult: The comparison was more difficult than most facial comparisons
- 4 - Very difficult: The comparison was unusually difficult, involving significant photometric, illumination, or pose changes, other red flags
- 5 - Not possible: The comparison was virtually impossible, due to a lack of detail in the image(s)

Back

Next

87%

# Answer Sheet A

## Certification

OMB Control No. 0693-0043  
Expiration Date 12-31-2018

41. Please certify the following:

- I certify that I performed all comparisons by myself with no help or input from others.
- I certify that I did not distribute the pictures to any others.
- I certify that I had my employer's permission to use my employer's computers, email, laboratory tools, methods, or procedures.
- I certify that I did not use my employer's computers, email, laboratory tools, methods, or procedures.

42. Are your entries final? \*

- Yes
- No

Back

Next

91%





Review of Results

OMB Control No. 0693-0043  
Expiration Date: 12-31-2018  
Review Your Results

1. Instructions

Compare the following 20 pairs of face images. Reduced-resolution versions of the images are included here for reference. However, in making your comparisons, you should use the high-resolution versions sent from the PI. If you did not receive instructions for downloading the pairs from MIT's secure fileserver, you should contact the PI, either by email ([jonathon.phillips@mit.edu](mailto:jonathon.phillips@mit.edu)) or by phone (617-253-3345).

For each image pair, rate the similarity on a 7-point scale. Then rate the easiness or difficulty on making the comparison on a 5-point scale.

Please do not consult or discuss this study with friends, family, or colleagues from your institution or other institutions.

If you have any questions, please do not hesitate to contact the PI either by email ([jonathon.phillips@mit.edu](mailto:jonathon.phillips@mit.edu)) or by phone (617-253-3345). Email is preferred.

You may go back and edit any previously entered ratings until you hit "Submit." Once you click "Submit," your submission is final. Before you click "Submit," you may access this survey in multiple sessions during the course of the experiment via the link emailed to you. You may withdraw up until you finalize your submission.

2. Pair 01



1. Based on your observations, how alike are the persons in Pair 01?  
2. How easy or difficult was it to make the comparison determination?

3. Pair 02



3. Based on your observations, how alike are the persons in Pair 02?  
4. How easy or difficult was it to make the comparison determination?

4. Pair 03



5. Based on your observations, how alike are the persons in Pair 03?  
6. How easy or difficult was it to make the comparison determination?

5. Pair 04



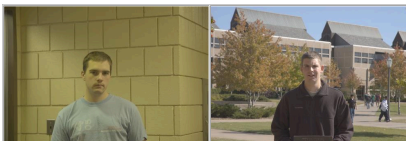
7. Based on your observations, how alike are the persons in Pair 04?  
8. How easy or difficult was it to make the comparison determination?

6. Pair 05



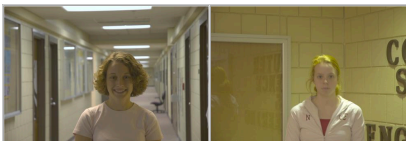
9. Based on your observations, how alike are the persons in Pair 05?  
10. How easy or difficult was it to make the comparison determination?

7. Pair 06



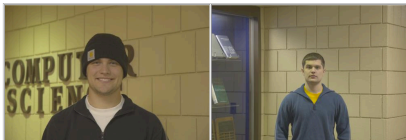
11. Based on your observations, how alike are the persons in Pair 06?  
12. How easy or difficult was it to make the comparison determination?

8. Pair 07



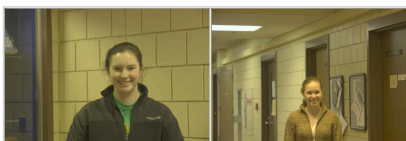
13. Based on your observations, how alike are the persons in Pair 07?  
14. How easy or difficult was it to make the comparison determination?

9. Pair 08



15. Based on your observations, how alike are the persons in Pair 08?  
16. How easy or difficult was it to make the comparison determination?

10. Pair 09



17. Based on your observations, how alike are the persons in Pair 09?  
18. How easy or difficult was it to make the comparison determination?



11. Pair 10



19. Based on your observations, how alike are the persons in Pair 10?  
20. How easy or difficult was it to make the comparison determination?

12. Pair 11



21. Based on your observations, how alike are the persons in Pair 11?  
22. How easy or difficult was it to make the comparison determination?

13. Pair 12



23. Based on your observations, how alike are the persons in Pair 12?  
24. How easy or difficult was it to make the comparison determination?

14. Pair 13



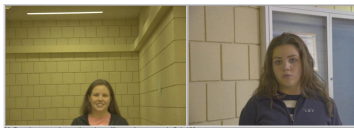
25. Based on your observations, how alike are the persons in Pair 13?  
26. How easy or difficult was it to make the comparison determination?

15. Pair 14



27. Based on your observations, how alike are the persons in Pair 14?  
28. How easy or difficult was it to make the comparison determination?

16. Pair 15



29. Based on your observations, how alike are the persons in Pair 15?  
30. How easy or difficult was it to make the comparison determination?

17. Pair 16



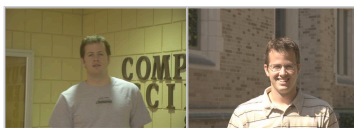
31. Based on your observations, how alike are the persons in Pair 16?  
32. How easy or difficult was it to make the comparison determination?

18. Pair 17



33. Based on your observations, how alike are the persons in Pair 17?  
34. How easy or difficult was it to make the comparison determination?

19. Pair 18



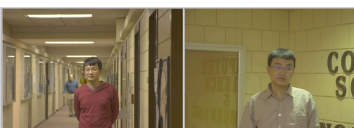
35. Based on your observations, how alike are the persons in Pair 18?  
36. How easy or difficult was it to make the comparison determination?

20. Pair 19



37. Based on your observations, how alike are the persons in Pair 19?  
38. How easy or difficult was it to make the comparison determination?

21. Pair 20



39. Based on your observations, how alike are the persons in Pair 20?  
40. How easy or difficult was it to make the comparison determination?

22. Certification

41. Please certify the following:  
42. Are you certain?

- Yes

Next Submit

1/1

# Answer Sheet A

## Thank You!

OMB Control No. 0693-0043  
Expiration Date 12-31-2018

Thank you for taking our survey.

Your response is very important to us. This collection of information contains Paperwork Reduction Act (PRA) requirements approved by the Office of Management and Budget (OMB). Notwithstanding any other provisions of the law, no person is required to respond to, nor shall any person be subject to a penalty for failure to comply with, a collection of information subject to the requirements of the PRA unless that collection of information displays a currently valid OMB control number. Public reporting burden for this collection is estimated to be 120 minutes per response, including the time for reviewing instructions, searching existing data sources, gathering and maintaining the data needed and completing and reviewing the collection of information. Send comments regarding this burden estimate or any aspect of this collection of information, including suggestions for reducing this burden, to the National Institute of Standards and Technology, Attn: Jonathon Phillips ([jonathon.phillips@nist.gov](mailto:jonathon.phillips@nist.gov)).

---

100%

