



The Landslide Reporter's Guide

Landslide Identification Training



Training Instructions

- The following images are reports made to the Global Landslide Catalog (GLC).
- Flip through these to train your eye to identify some of the common types of landslides from reports.
- In addition to images, keywords in the news articles may help with identifying the appropriate size and category.



What category of landslide is this, and how large?



February 2017, Maple Valley Highway, Renton, WA, USA (Source: Renton Reporter)

- Maple Valley Highway (SR 169) is shut down for westbound traffic due to a _____. Traffic is shut down at 140th Way Southeast and and Maple Valley Highway. Eastbound traffic is limited to one lane east of I-405 and Maple Valley Highway. (Source: Renton Reporter)



What category of landslide is this, and how large?



Landslide, small



February 2017, Maple Valley Highway, Renton, WA, USA (Source: Renton Reporter)

- Maple Valley Highway (SR 169) is shut down for westbound traffic due to a landslide. Traffic is shut down at 140th Way Southeast and and Maple Valley Highway. Eastbound traffic is limited to one lane east of I-405 and Maple Valley Highway. (Source: Renton Reporter)



What category of landslide is this, and how large?



January 2017, Santa Barbara County, CA, USA
(Source: Mike Eliason, AP)

- Parts of Santa Barbara and Ventura counties, near the Thomas Fire burn area, were hard-hit with mud and debris on January 9, leading to 20 fatalities. Rain rates of up to 1.5 inches per hour were recorded in the Thomas Fire burn area. (Source: The Weather Company)



What category of landslide is this, and how large?



Debris flow, large



January 2017, Santa Barbara County, CA, USA
(Source: Mike Eliason, AP)

- Parts of Santa Barbara and Ventura counties, near the Thomas Fire burn area, were hard-hit with mud and debris on January 9, leading to multiple deaths and injuries. Rain rates of up to 1.5 inches per hour were recorded in the Thomas Fire burn area. (Source: The Weather Company)



What category of landslide is this, and how large?



March 2014, Highway 65, Grand Mesa, CO, USA
(Source: NBC / KKCO)

- A 125-foot-wide _____ has closed the main highway over the Grand Mesa near Interstate-70. According to the Colorado Department of Transportation, Friday morning, crews from Yenter Construction are rock scaling in an effort to bring down remaining rocks and boulders perched on the slope above the roadway.
(Source: NBC / KKCO)



What category of landslide is this, and how large?



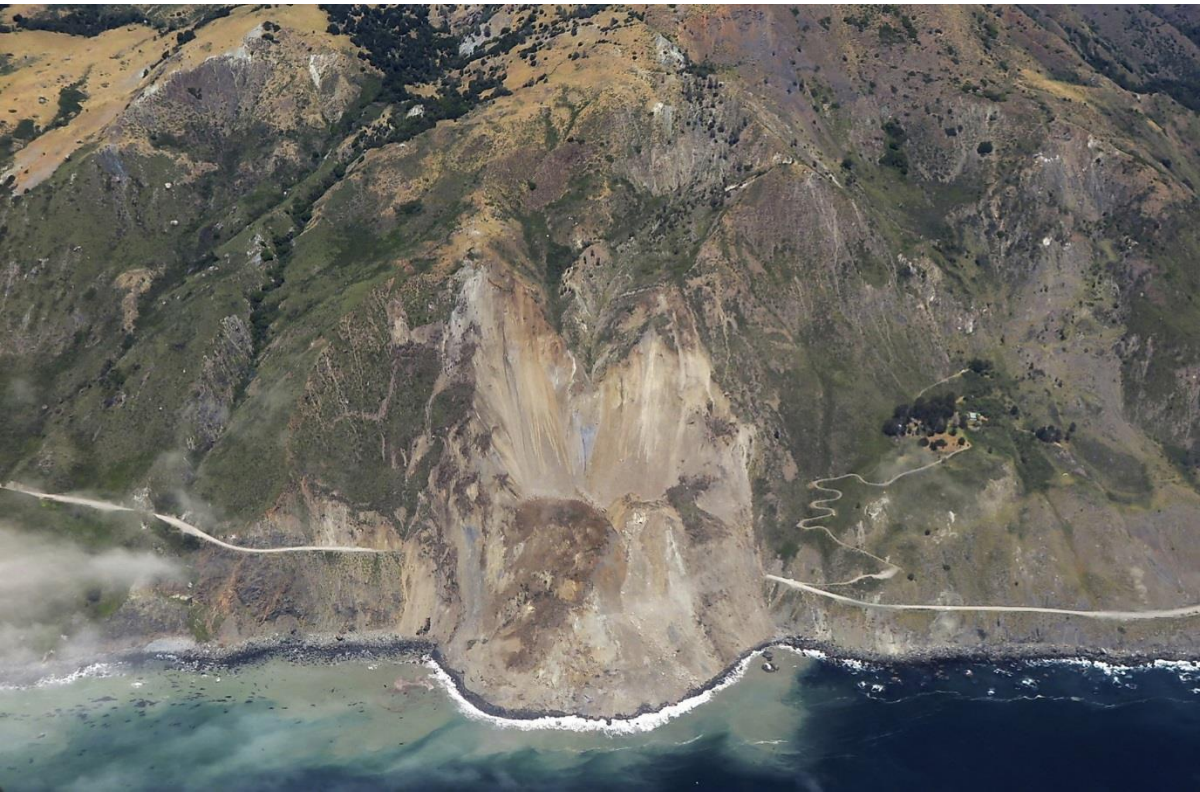
Rock fall, medium

March 2014, Highway 65, Grand Mesa, CO, USA
(Source: NBC / KKCO)

- A 125-foot-wide rockslide has closed the main highway over the Grand Mesa near Interstate-70. According to the Colorado Department of Transportation, Friday morning, crews from Yenter Construction are rock scaling in an effort to bring down remaining rocks and boulders perched on the slope above the roadway.
(Source: NBC / KKCO)



What category of landslide is this, and how large?



May 2017, Highway 1, Big Sur, CA, USA (Source: John Madonna, AP)

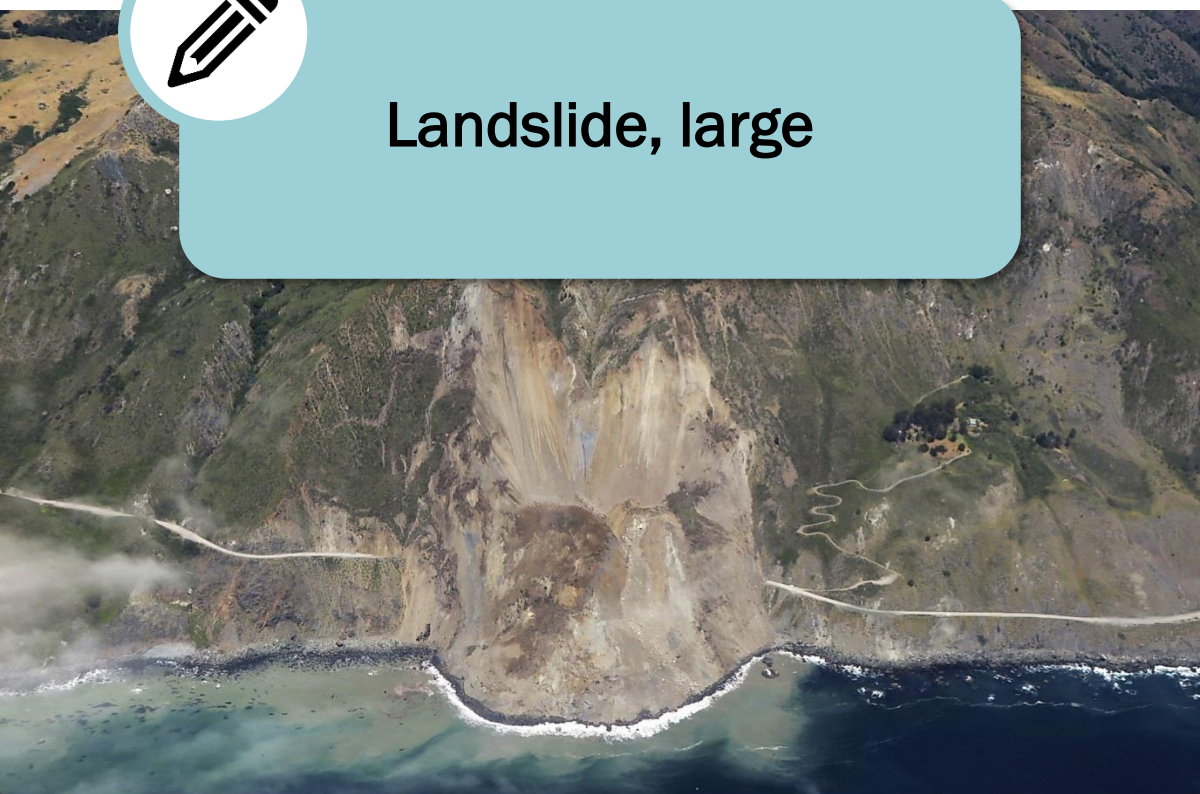
- A massive landslide along California's coastal Highway 1 has buried the road under a 40-foot layer of rock and dirt. A swath of the hillside gave way in an area called mud creek on Saturday, covering about half a kilometer of road and changing the Big Sur coastline. (Source: SFGate)



What category of landslide is this, and how large?



Landslide, large



May 2017, Highway 1, Big Sur, CA, USA (Source: John Madonna, AP)

- A massive landslide along California's coastal Highway 1 has buried the road under a 40-foot layer of rock and dirt. A swath of the hillside gave way in an area called mud creek on Saturday, covering about half a kilometer of road and changing the Big Sur coastline. (Source: SFGate)



What category of landslide is this, and how large?



January 2017, Volcán, Jujuy, Argentina (Source: AP/ La Nacion)

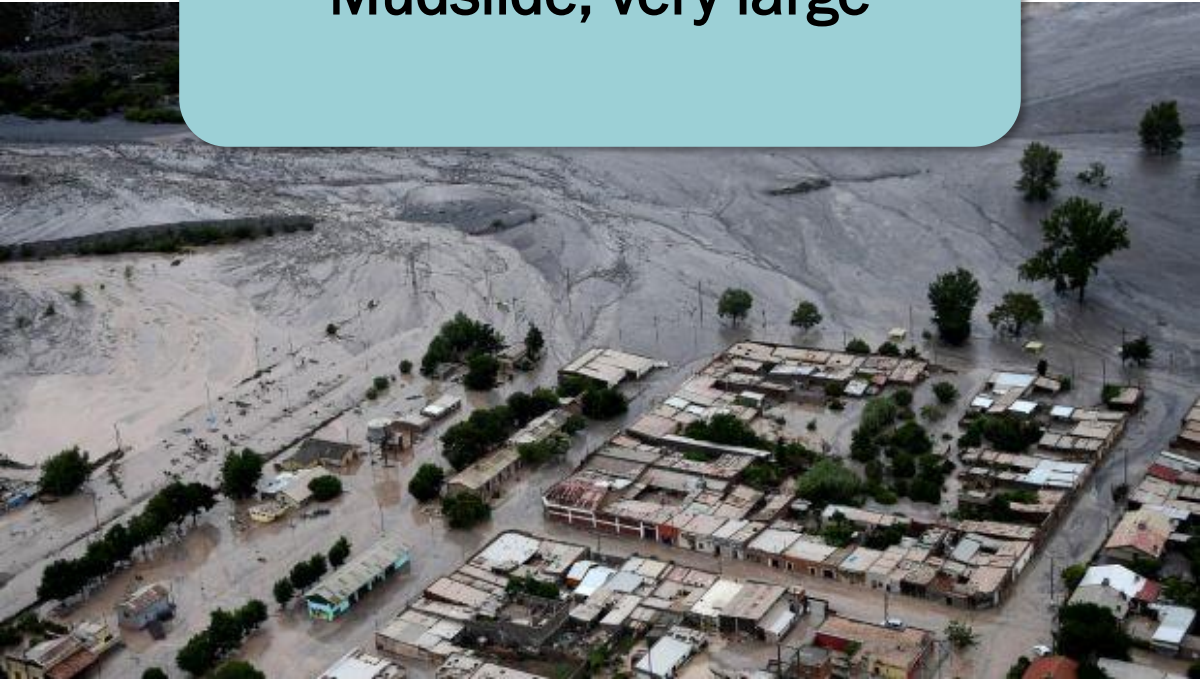
- After extremely heavy rains falling over the course of the past week, the largest landslide since 1978 has ravaged the Argentinean province of Jujuy. The landslide claimed two victims as a couple were trapped within their car in the town of Volcán. About 1000 people were evacuated. (Source: The Bubble)



What category of landslide is this, and how large?



Mudslide, very large



January 2017, Volcán, Jujuy, Argentina (Source: AP/ La Nacion)

- After extremely heavy rains falling over the course of the past week, the largest landslide since 1978 has ravaged the Argentinean province of Jujuy. The landslide claimed two victims as a couple were trapped within their car in the town of Volcán. About 1000 people were evacuated. (Source: The Bubble)



What category of landslide is this, and how large?



March 2017, Highway 138, Glide, OR, USA
(Source: Oregon DOT)

- A rock the size of a cottage, about 200 tons, fell onto Oregon Highway 138 east of Glide and blocked both lanes of traffic. The rock crashed sometime after midnight. (Source: Mail Tribune)



What category of landslide is this, and how large?



Rock fall, medium



March 2017, Highway 138, Glide, OR, USA
(Source: Oregon DOT)

- A rock the size of a cottage, about 200 tons, fell onto Oregon Highway 138 east of Glide and blocked both lanes of traffic. The rock crashed sometime after midnight. (Source: Mail Tribune)



What category of landslide is this, and how large?



July 2017, NH-37, Burapahar, Nagaon, Assam, India (Source: Daily World)

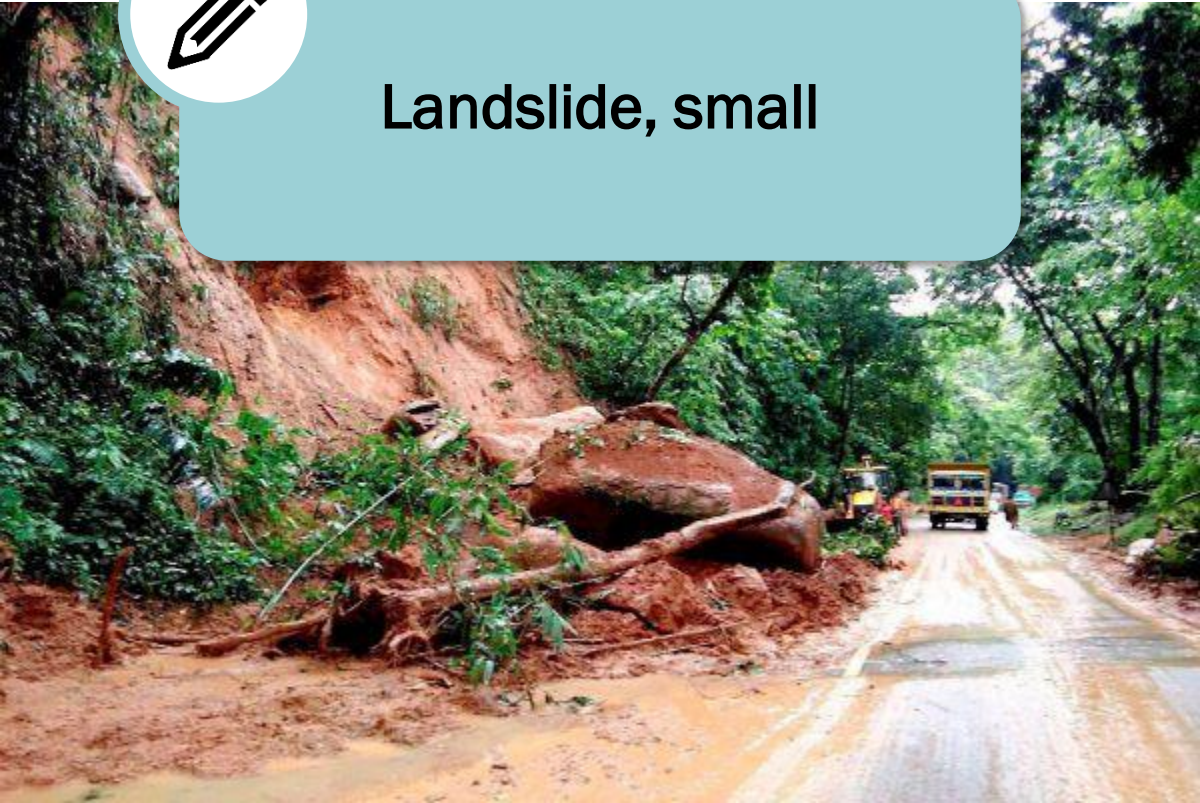
- _____ at National Highway 37 near Burapahar area in Nagaon district of Assam, following continuous rain. (Source: Daily World)



What category of landslide is this, and how large?



Landslide, small



July 2017, NH-37, Burapahar, Nagaon, Assam, India (Source: Daily World)

- Landslide at National Highway 37 near Burapahar area in Nagaon district of Assam. (Source: Daily World)



What category of landslide is this, and how large?



January 2017, Cambria, CA, USA (Source: David Middlecamp, The Tribune News)

- Continuous and heavy rainfall between Jan 3 and Jan 9 have spurred multiple landslides across the North Coast. About five miles upstream from Coast Union High School in Cambria, Santa Rosa Creek undercut Santa Rosa Creek Road. Here, bicyclists check out the damage on Jan. 9. (Source: The Tribune News)



What category of landslide is this, and how large?



Riverbank collapse,
small



January 2017, Cambria, CA, USA (Source: David Middlecamp, The Tribune News)

- Continuous and heavy rainfall between Jan 3 and Jan 9 have spurred multiple landslides across the North Coast. About five miles upstream from Coast Union High School in Cambria, Santa Rosa Creek undercut Santa Rosa Creek Road. Here, bicyclists check out the damage on Jan. 9. (Source: The Tribune News)



What category of landslide is this, and how large?



July 2017, Lakeshore Drive North, Summerland, British Columbia, Canada (Source: Kayley Davies)

- A _____ has washed out a beachfront road in Summerland. The slide occurred Thursday evening, and covered Lakeshore Drive North, just north of Summerland by Crescent Beach. It is unclear if anyone was injured in the slide, but police are on scene. (Source: Castanet)



What category of landslide is this, and how large?



Landslide/
Translational slide,
medium



July 2017, Lakeshore Drive North, Summerland, British Columbia, Canada (Source: Kayley Davies)

- A landslide has washed out a beachfront road in Summerland. The slide occurred Thursday evening, and covered Lakeshore Drive North, just north of Summerland by Crescent Beach. It is unclear if anyone was injured in the slide, but police are on scene. (Source: Castanet)



What category of landslide is this, and how large?



June 2017, Qiao Meng Road, Zhao Qiao, Yunnan Province, China (Source: Yunnan.cn)

- Heavy rain on June 30 led to a _____, resulting in temporary traffic disruptions. (Source: Top News)



What category of landslide is this, and how large?



Debris flow, small



June 2017, Qiao Meng Road, Zhao Qiao, Yunnan Province, China (Source: Yunnan.cn)

- Heavy rain on June 30 led to a debris flow, resulting in temporary traffic disruptions. (Source: Top News)



What category of landslide is this, and how large?



September 2015, Provo River Parkway, Provo Canyon, Utah, USA (Source: Sgt. Spencer Cannon)

- On Monday afternoon, a _____ occurred on the Provo River Parkway trail approximately 1 mile northeast of the popular Bridal Veil Falls recreation area. No one was injured and those walking or jogging along the parkway trail were not seriously hindered from the slide. (Source: Daily Herald)



What category of landslide is this, and how large?



Rock fall, small



September 2015, Provo River Parkway, Provo Canyon, Utah, USA (Source: Sgt. Spencer Cannon)

- On Monday afternoon, a rock slide occurred on the Provo River Parkway trail approximately 1 mile northeast of the popular Bridal Veil Falls recreation area. No one was injured and those walking or jogging along the parkway trail were not seriously hindered from the slide. (Source: Daily Herald)



What category of landslide is this, and how large?



March 2017, The Creek House at Deetjen's Big Sur Inn, Big Sur, CA, USA (Source: LiPo Ching, Bay Area News Group)

- The Creek House at Deetjen's Big Sur Inn was damaged from a _____ during recent storms in Big Sur. Landslides have destroyed four of its 20 cabins and compromised its other historic structures and all the internal roadways. (Source: The Mercury News)



What category of landslide is this, and how large?



Mudslide, medium



March 2017, The Creek House at Deetjen's Big Sur Inn, Big Sur, CA, USA (Source: LiPo Ching, Bay Area News Group)

- The Creek House at Deetjen's Big Sur Inn was damaged from a mudslide during recent storms in Big Sur. Landslides have destroyed four of its 20 cabins and compromised its other historic structures and all the internal roadways. (Source: The Mercury News)



What category of landslide is this, and how large?



June 2016, Richwood, West Virginia, USA

(Source: Christian Tyler Randolph, AP)

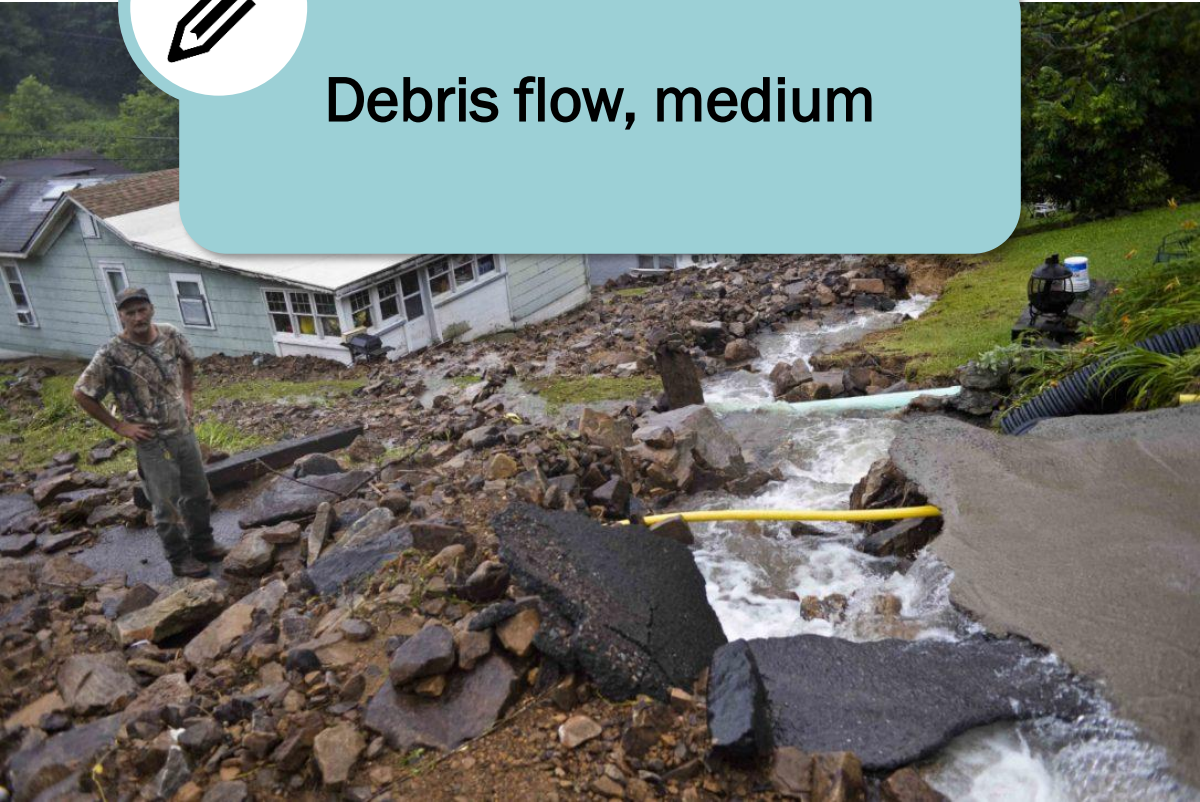
- A resident of Richwood, W.Va. stands among the aftermath of a _____ caused by severe flooding that poured into a property owned by his family since the 1930's. West Virginia's governor declared a state of emergency in 44 of 54 counties and has authorized up to 500 soldiers to assist after flooding caused widespread chaos. (Source: The Star)



What category of landslide is this, and how large?



Debris flow, medium



June 2016, Richwood, West Virginia, USA

(Source: Christian Tyler Randolph, AP)

- A resident of Richwood, W.Va. stands among the aftermath of a rockslide caused by severe flooding that poured into a property owned by his family since the 1930's. West Virginia's governor declared a state of emergency in 44 of 54 counties and has authorized up to 500 soldiers to assist after flooding caused widespread chaos. (Source: The Star)



What category of landslide is this, and how large?



January 2017, Highway 97, Peachland, British Columbia, Canada (Source: Cynthia Coates)

- A small _____ brought traffic to a standstill when it covered the southbound lane of Highway 97 near Peachland, B.C., on Friday afternoon. The slide happened shortly after 1 p.m. PT about three kilometres south of the small Okanagan community. The slide blocked traffic on Renfrew Road above Highway 97. (Source: CBC News)



What category of landslide is this, and how large?



Landslide /
Translational slide,
medium



January 2017, Highway 97, Peachland, British Columbia, Canada (Source: Cynthia Coates)

- A small landslide brought traffic to a standstill when it covered the southbound lane of Highway 97 near Peachland, B.C., on Friday afternoon. The slide happened shortly after 1 p.m. PT about three kilometres south of the small Okanagan community. The slide blocked traffic on Renfrew Road above Highway 97. (Source: CBC News)



Finish



Congratulations,
you can identify size and
types of landslides with
greater accuracy!

With your newfound knowledge, you can submit higher-quality reports to the Cooperative Open Online Landslide Repository (COOLR) that will help refine our research and scientific models.

We look forward to receiving your landslide reports!



Landslide Reporter

LANDSLIDES @ NASA

landslides.nasa.gov