

Attachment D.

CRC SimPLER Tool

CRC SimPLER

Community Reception Center Simulation Program for Leveraging and Evaluating Resources

Instructions for users:

Select the operational shift length your CRC will be open to receive individuals for population monitoring. Select the size of the estimated population that will be arriving during one shift that will need CRC services and the percent of the incoming population that would be assumed contaminated based on the incident type and/or screening criteria set by your jurisdiction.

Operational Shift Length (Hours per day)

12 ▼

Estimated Arriving Population During Shift

2500 ▼

Percent of Population Assumed Contaminated

25 ▼

Arrival Distribution Uniform ▼

Enable Arrival Distribution Options

CRC Station Flow Diagram

Select the number of resources used at your CRC:

Number of Portal Monitors	0	Minimum Staff*	1
	1		
Number of Handheld Detectors (Prior to Decon)	2		2
	3		
Number of Individual Showers	4		4
	5		
Number of Handheld Detectors (Post Decon)	6		2
	10		
Number of Registration Lanes	6 ▼		
			15 Total

Number of registration lanes open simultaneously

Estimate



File Help

Inputs

Outputs

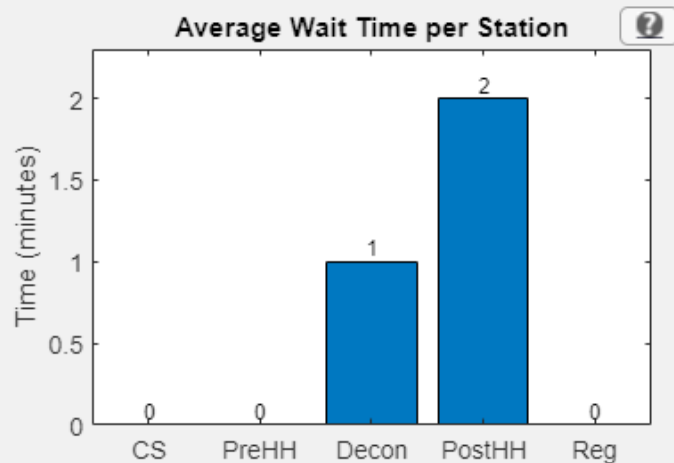
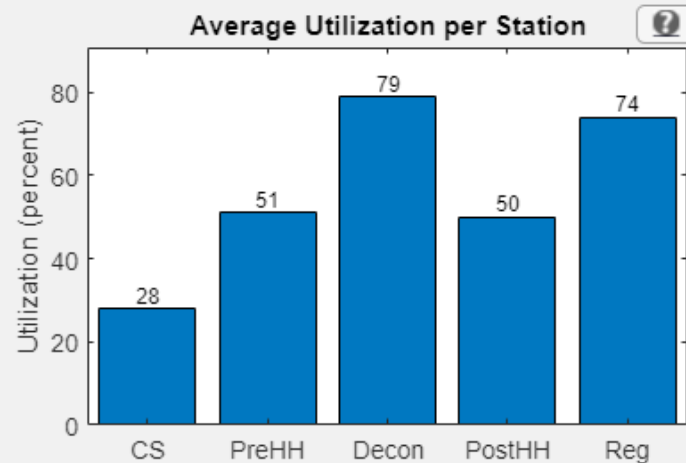
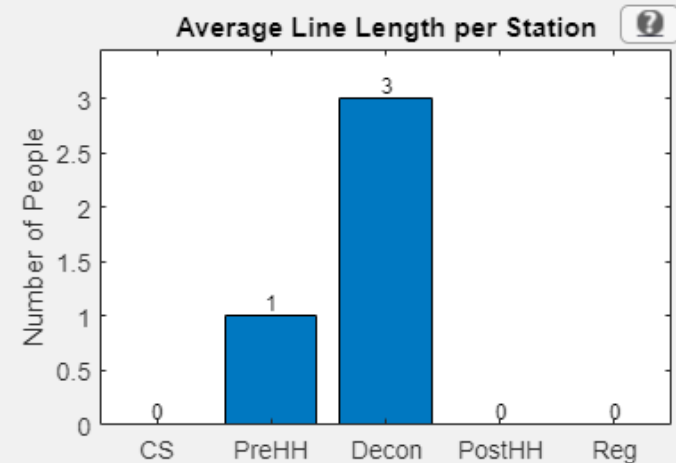
Tables

CRC Shift Results Summary

Average Hourly Throughput (Individuals) Average Time Spent at CRC (hh:mm:ss) Total Throughput at Shift End (Individuals) Extended Time Past Shift (hh:mm:ss)

Shift Averages for Each Station

All numbers represent averages of each station over the entirety of one shift at the CRC. To see detailed descriptions of what is presented in each plot, hover over the question icon. Below each chart, the station that had the largest average will be listed along with its value.

Station Name Longest Wait Time (minutes) Station Name Highest Utilization (percent) Station Name Longest Line (Individuals)

Abbreviations for Stations Shown in Graphs

CS = Contamination Screening
 PreHH = Pre Decontamination Handheld Screening
 Decon = Decontamination
 PostHH = Post Decontamination Handheld Screening
 Reg = Registration

