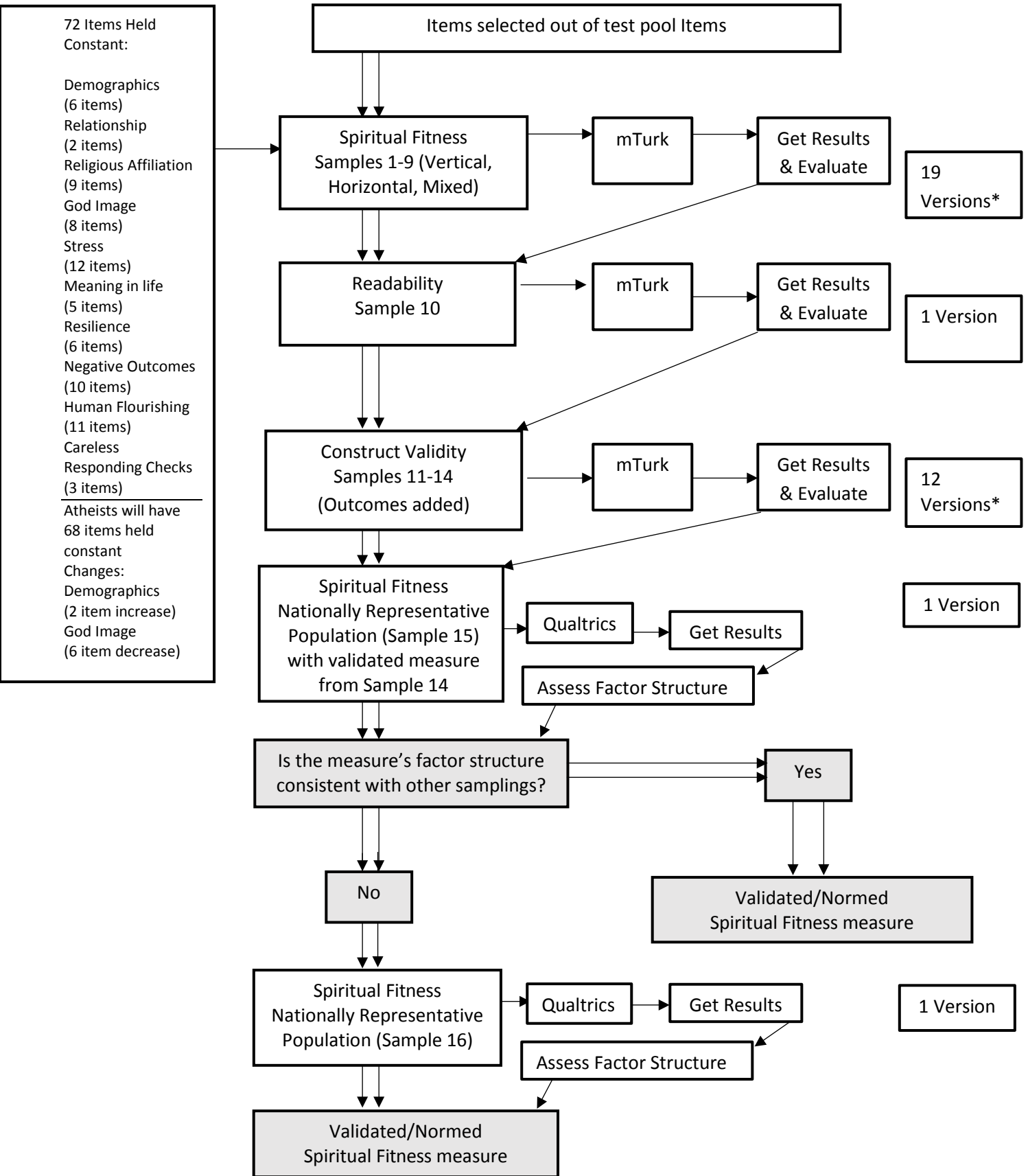


## Spiritual Fitness Metrics



\* = Multiple versions of the survey within the samples. The different survey versions are: a civilian theist version, a civilian atheist version, and a service member version. Respondents are filtered into the appropriate version based on their responses to specific demographic and religious affiliation questions that are in the beginning of the survey. Within each version, there are additional filter questions to further tailor which items are given (e.g., for service members: (1) receiving combat exposure questions for those who reported prior deployment, (2) receiving more horizontal transcendence items and less vertical items if they are an atheist). The outcome indicators remain consistent in each version (see the upper left box) for Samples 1-9. Only one version of the survey will be given in Sample 10 and the Nationally Representative Samples (Sample 15 and Sample 16).