



Sheep and Goats

ISSN: 1949-1611

Released January 31, 2017, by the National Agricultural Statistics Service (NASS), Agricultural Statistics Board, United States Department of Agriculture (USDA).

January 1 Sheep and Lamb Inventory Down 2 Percent

All sheep and lamb inventory in the United States on January 1, 2017 totaled 5.20 million head, down 2 percent from 2016. Breeding sheep inventory at 3.86 million head on January 1, 2017, decreased 2 percent from 3.95 million head on January 1, 2016. Ewes one year old and older, at 3.04 million head, were 2 below last year. Market sheep and lambs on January 1, 2017 totaled 1.35 million head, down 1 percent from January 1, 2016. Market lambs comprised 94 percent of the total market inventory. Market sheep comprised the remaining 6 percent of total market inventory.

The 2016 lamb crop of 3.25 million head was down 1 percent from 2015. The 2016 lambing rate was 105 lambs per 100 ewes one year old and older on January 1, 2016, unchanged from 2015.

Shorn wool production in the United States during 2016 was 25.7 million pounds, down 5 percent from 2015. Sheep and lambs shorn totaled 3.56 million head, down 3 percent from 2015. The average price paid for wool sold in 2016 was \$1.45 per pound for a total value of 37.2 million dollars, down 5 percent from 39.2 million dollars in 2015.

Sheep death loss during 2016 totaled 217 thousand head, down 5 percent from 2015. Lamb death loss decreased 1 percent from 374 thousand head to 372 thousand head in 2016.

January 1 Goat and Kid Inventory Up 1 Percent

All goat inventory in the United States on January 1, 2017 totaled 2.64 million head, up 1 percent from 2016. Breeding goat inventory totaled 2.17 million head, up slightly from 2016. Does one year old and older, at 1.61 million head, were slightly above last year's number. Market goats and kids totaled 469 thousand head, up 2 percent from a year ago.

Kid crop for 2016 totaled 1.64 million head for all goats, up 1 percent from 2015.

Meat and all other goats totaled 2.12 million head on January 1, 2017, up 1 percent from 2016. Milk goat inventory was 373 thousand head, unchanged from January 1, 2016, while Angora goats were up 1 percent, totaling 152 thousand head.

Mohair production in the United States during 2016 was 800 thousand pounds. Goats and kids clipped totaled 141 thousand head. Average weight per clip was 5.7 pounds. Mohair price was \$4.56 per pound with a value of 3.65 million dollars.

Sheep and Goat Revisions

All sheep and goat inventory and lamb and kid crop estimates for January 1, 2016, were reviewed using official slaughter, import and export data, and the relationship of new survey information to the prior surveys. A revision of 0.4 percent was made to sheep inventory and a revision of 5 percent to lamb crop at the United States level. No revisions were made to all goat inventory and a 3 percent change was made to the kid crop. State level estimates were reviewed and changes were made to reallocate inventory estimates to the United States total.

This page intentionally left blank

Contents

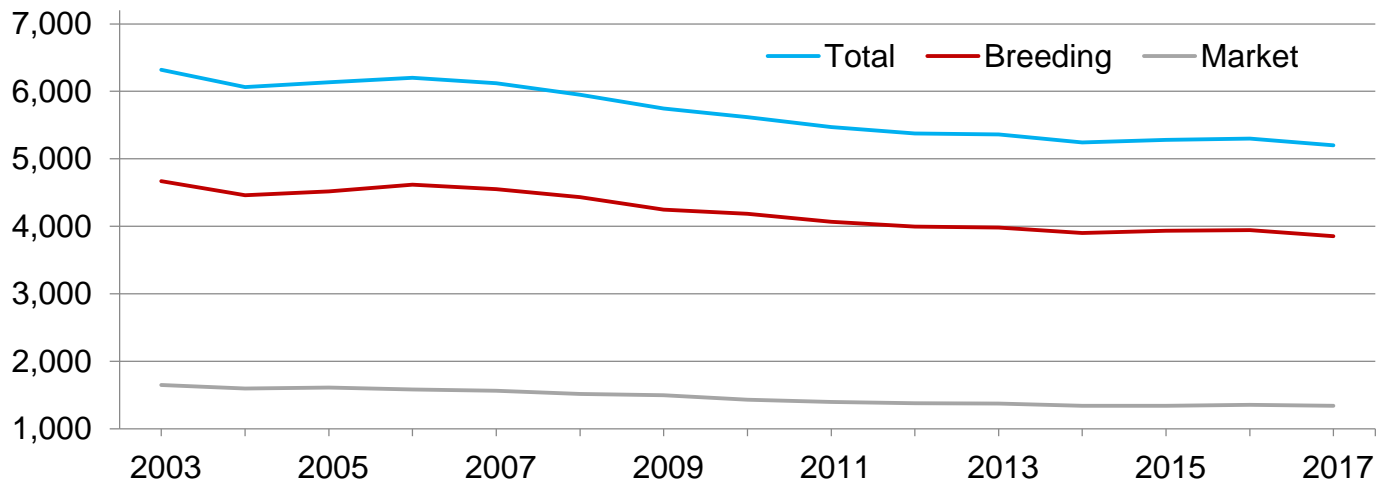
| | |
|---|----|
| Sheep and Lamb Inventory by Class – United States: January 1, 2016 and 2017 | 4 |
| All Sheep and Lamb Inventory – United States: January 1 | 4 |
| Wool Production, Price, and Value – United States: 2015 and 2016..... | 4 |
| Sheep and Lamb Inventory by Class – States and United States: January 1, 2016 and 2017..... | 5 |
| Breeding Sheep and Lamb Inventory by Class – States and United States: January 1, 2016 and 2017 | 6 |
| Lamb Crop – States and United States: 2015 and 2016..... | 7 |
| Market Sheep and Lamb Inventory by Weight Group – States and United States: January 1, 2016..... | 8 |
| Market Sheep and Lamb Inventory by Weight Group – States and United States: January 1, 2017..... | 9 |
| Sheep and Lamb Farm Slaughter and Death Loss – States and United States: 2015 and 2016..... | 10 |
| Wool Production – States and United States: 2015 and 2016..... | 11 |
| Wool Price and Value – States and United States: 2015 and 2016..... | 12 |
| Goat and Kid Inventory by Class – United States: January 1, 2016 and 2017 | 13 |
| All Goat Inventory – United States: January 1 | 13 |
| Angora Goat Inventory by Class – United States: January 1, 2016 and 2017 | 14 |
| Milk Goat Inventory by Class – United States: January 1, 2016 and 2017 | 14 |
| Meat and Other Goat Inventory by Class – United States: January 1, 2016 and 2017 | 14 |
| Angora Goat Inventory – States and United States: January 1, 2016 and 2017..... | 15 |
| Mohair Production, Price, and Value – States and United States: 2015 and 2016 | 15 |
| Milk Goat Inventory – States and United States: January 1, 2016 and 2017..... | 16 |
| Meat and Other Goat Inventory – States and United States: January 1, 2016 and 2017 | 17 |
| Statistical Methodology | 18 |
| Reliability of January 1 Sheep and Lamb Estimates..... | 19 |
| Information Contacts | 19 |

Sheep and Lamb Inventory by Class – United States: January 1, 2016 and 2017

| Class | 2016 | 2017 | 2017 as percent of 2016 |
|--|--------------|--------------|-------------------------|
| | (1,000 head) | (1,000 head) | (percent) |
| All sheep and lambs | 5,300.0 | 5,200.0 | 98 |
| Breeding sheep and lambs | 3,945.0 | 3,855.0 | 98 |
| Replacement lambs under one year old | 665.0 | 650.0 | 98 |
| Ewes - one year old and older | 3,105.0 | 3,035.0 | 98 |
| Rams - one year old and older | 175.0 | 170.0 | 97 |
| Market sheep and lambs | 1,355.0 | 1,345.0 | 99 |

All Sheep and Lamb Inventory – United States: January 1

Thousand head



Wool Production, Price, and Value – United States: 2015 and 2016

| Year | Sheep shorn ¹ | Weight per fleece | Shorn wool production | Price per pound | Value |
|------------|--------------------------|-------------------|-----------------------|-----------------|-----------------|
| | (1,000 head) | (pounds) | (1,000 pounds) | (dollars) | (1,000 dollars) |
| 2015 | 3,675 | 7.4 | 27,015 | 1.45 | 39,205 |
| 2016 | 3,560 | 7.2 | 25,740 | 1.45 | 37,214 |

¹ Includes shearing at commercial feeding yards.

Sheep and Lamb Inventory by Class – States and United States: January 1, 2016 and 2017

| State | All sheep and lambs | | | Total breeding | | Total market | |
|---------------------------------|---------------------|--------------|-------------------------|----------------|--------------|--------------|--------------|
| | 2016 | 2017 | 2017 as percent of 2016 | 2016 | 2017 | 2016 | 2017 |
| | (1,000 head) | (1,000 head) | (percent) | (1,000 head) | (1,000 head) | (1,000 head) | (1,000 head) |
| Arizona | 140.0 | 130.0 | 93 | 101.0 | 97.0 | 39.0 | 33.0 |
| California | 575.0 | 585.0 | 102 | 320.0 | 325.0 | 255.0 | 260.0 |
| Colorado | 435.0 | 395.0 | 91 | 220.0 | 200.0 | 215.0 | 195.0 |
| Idaho | 255.0 | 255.0 | 100 | 185.0 | 184.0 | 70.0 | 71.0 |
| Illinois | 60.0 | 55.0 | 92 | 50.0 | 46.0 | 10.0 | 9.0 |
| Indiana | 50.0 | 52.0 | 104 | 43.0 | 45.0 | 7.0 | 7.0 |
| Iowa | 175.0 | 175.0 | 100 | 125.0 | 120.0 | 50.0 | 55.0 |
| Kansas | 65.0 | 68.0 | 105 | 44.0 | 45.0 | 21.0 | 23.0 |
| Kentucky | 53.0 | 48.0 | 91 | 42.0 | 38.0 | 11.0 | 10.0 |
| Michigan | 82.0 | 85.0 | 104 | 58.0 | 61.0 | 24.0 | 24.0 |
| Minnesota | 125.0 | 130.0 | 104 | 88.0 | 91.0 | 37.0 | 39.0 |
| Missouri | 88.0 | 90.0 | 102 | 76.0 | 70.0 | 12.0 | 20.0 |
| Montana | 230.0 | 230.0 | 100 | 210.0 | 200.0 | 20.0 | 30.0 |
| Nebraska | 80.0 | 83.0 | 104 | 67.0 | 71.0 | 13.0 | 12.0 |
| Nevada | 60.0 | 63.0 | 105 | 49.0 | 54.0 | 11.0 | 9.0 |
| New England ¹ | 42.0 | 43.0 | 102 | 33.0 | 33.0 | 9.0 | 10.0 |
| New Mexico | 90.0 | 97.0 | 108 | 76.0 | 82.0 | 14.0 | 15.0 |
| New York | 80.0 | 75.0 | 94 | 68.0 | 62.0 | 12.0 | 13.0 |
| North Carolina | 32.0 | 30.0 | 94 | 27.0 | 25.0 | 5.0 | 5.0 |
| North Dakota | 73.0 | 66.0 | 90 | 53.0 | 52.0 | 20.0 | 14.0 |
| Ohio | 120.0 | 117.0 | 98 | 96.0 | 92.0 | 24.0 | 25.0 |
| Oklahoma | 46.0 | 48.0 | 104 | 37.0 | 38.0 | 9.0 | 10.0 |
| Oregon | 180.0 | 170.0 | 94 | 130.0 | 124.0 | 50.0 | 46.0 |
| Pennsylvania | 94.0 | 93.0 | 99 | 77.0 | 75.0 | 17.0 | 18.0 |
| South Dakota | 265.0 | 250.0 | 94 | 200.0 | 193.0 | 65.0 | 57.0 |
| Tennessee | 48.0 | 46.0 | 96 | 40.0 | 38.0 | 8.0 | 8.0 |
| Texas | 725.0 | 700.0 | 97 | 580.0 | 560.0 | 145.0 | 140.0 |
| Utah | 285.0 | 275.0 | 96 | 265.0 | 255.0 | 20.0 | 20.0 |
| Virginia | 75.0 | 80.0 | 107 | 60.0 | 61.0 | 15.0 | 19.0 |
| Washington | 50.0 | 48.0 | 96 | 41.0 | 39.0 | 9.0 | 9.0 |
| West Virginia | 36.0 | 34.0 | 94 | 30.0 | 28.0 | 6.0 | 6.0 |
| Wisconsin | 76.0 | 76.0 | 100 | 63.0 | 63.0 | 13.0 | 13.0 |
| Wyoming | 355.0 | 360.0 | 101 | 265.0 | 275.0 | 90.0 | 85.0 |
| Other States ² | 155.0 | 148.0 | 95 | 126.0 | 113.0 | 29.0 | 35.0 |
| United States | 5,300.0 | 5,200.0 | 98 | 3,945.0 | 3,855.0 | 1,355.0 | 1,345.0 |

¹ New England includes Connecticut, Maine, Massachusetts, New Hampshire, Rhode Island, and Vermont.

² Includes data for States not published in this table.

Breeding Sheep and Lamb Inventory by Class – States and United States: January 1, 2016 and 2017

| State | Breeding sheep | | | | Replacement lambs | | Total breeding sheep and lambs | |
|---------------------------------|----------------|--------------|--------------|--------------|-------------------|--------------|--------------------------------|--------------|
| | Ewes | | Rams | | 2016 | 2017 | 2016 | 2017 |
| | 2016 | 2017 | 2016 | 2017 | | | | |
| | (1,000 head) | (1,000 head) | (1,000 head) | (1,000 head) | (1,000 head) | (1,000 head) | (1,000 head) | (1,000 head) |
| Arizona | 71.0 | 68.0 | 6.0 | 6.0 | 24.0 | 23.0 | 101.0 | 97.0 |
| California | 265.0 | 270.0 | 10.0 | 10.0 | 45.0 | 45.0 | 320.0 | 325.0 |
| Colorado | 184.0 | 160.0 | 7.0 | 6.0 | 29.0 | 34.0 | 220.0 | 200.0 |
| Idaho | 146.0 | 138.0 | 5.0 | 5.0 | 34.0 | 41.0 | 185.0 | 184.0 |
| Illinois | 39.0 | 36.0 | 3.0 | 2.0 | 8.0 | 8.0 | 50.0 | 46.0 |
| Indiana | 33.0 | 35.0 | 3.0 | 4.0 | 7.0 | 6.0 | 43.0 | 45.0 |
| Iowa | 100.0 | 95.0 | 5.0 | 5.0 | 20.0 | 20.0 | 125.0 | 120.0 |
| Kansas | 36.0 | 36.0 | 2.0 | 2.0 | 6.0 | 7.0 | 44.0 | 45.0 |
| Kentucky | 33.0 | 30.0 | 2.0 | 2.0 | 7.0 | 6.0 | 42.0 | 38.0 |
| Michigan | 42.0 | 44.0 | 3.0 | 3.0 | 13.0 | 14.0 | 58.0 | 61.0 |
| Minnesota | 70.0 | 72.0 | 4.0 | 5.0 | 14.0 | 14.0 | 88.0 | 91.0 |
| Missouri | 60.0 | 55.0 | 3.0 | 3.0 | 13.0 | 12.0 | 76.0 | 70.0 |
| Montana | 159.0 | 159.0 | 6.0 | 6.0 | 45.0 | 35.0 | 210.0 | 200.0 |
| Nebraska | 55.0 | 58.0 | 3.0 | 3.0 | 9.0 | 10.0 | 67.0 | 71.0 |
| Nevada | 40.0 | 43.0 | 2.0 | 2.0 | 7.0 | 9.0 | 49.0 | 54.0 |
| New England ¹ | 25.0 | 24.0 | 2.0 | 2.0 | 6.0 | 7.0 | 33.0 | 33.0 |
| New Mexico | 58.0 | 59.0 | 4.0 | 5.0 | 14.0 | 18.0 | 76.0 | 82.0 |
| New York | 50.0 | 47.0 | 3.0 | 3.0 | 15.0 | 12.0 | 68.0 | 62.0 |
| North Carolina | 20.0 | 19.0 | 3.0 | 2.0 | 4.0 | 4.0 | 27.0 | 25.0 |
| North Dakota | 44.0 | 42.0 | 2.0 | 2.0 | 7.0 | 8.0 | 53.0 | 52.0 |
| Ohio | 73.0 | 70.0 | 6.0 | 6.0 | 17.0 | 16.0 | 96.0 | 92.0 |
| Oklahoma | 29.0 | 29.0 | 2.0 | 2.0 | 6.0 | 7.0 | 37.0 | 38.0 |
| Oregon | 101.0 | 101.0 | 6.0 | 5.0 | 23.0 | 18.0 | 130.0 | 124.0 |
| Pennsylvania | 59.0 | 59.0 | 5.0 | 5.0 | 13.0 | 11.0 | 77.0 | 75.0 |
| South Dakota | 161.0 | 155.0 | 6.0 | 6.0 | 33.0 | 32.0 | 200.0 | 193.0 |
| Tennessee | 30.0 | 29.0 | 3.0 | 3.0 | 7.0 | 6.0 | 40.0 | 38.0 |
| Texas | 445.0 | 435.0 | 35.0 | 35.0 | 100.0 | 90.0 | 580.0 | 560.0 |
| Utah | 215.0 | 205.0 | 8.0 | 8.0 | 42.0 | 42.0 | 265.0 | 255.0 |
| Virginia | 50.0 | 49.0 | 3.0 | 3.0 | 7.0 | 9.0 | 60.0 | 61.0 |
| Washington | 31.0 | 28.0 | 3.0 | 2.0 | 7.0 | 9.0 | 41.0 | 39.0 |
| West Virginia | 24.0 | 23.0 | 1.0 | 1.0 | 5.0 | 4.0 | 30.0 | 28.0 |
| Wisconsin | 49.0 | 48.0 | 2.0 | 3.0 | 12.0 | 12.0 | 63.0 | 63.0 |
| Wyoming | 215.0 | 225.0 | 7.0 | 7.0 | 43.0 | 43.0 | 265.0 | 275.0 |
| Other States ² | 93.0 | 89.0 | 10.0 | 6.0 | 23.0 | 18.0 | 126.0 | 113.0 |
| United States | 3,105.0 | 3,035.0 | 175.0 | 170.0 | 665.0 | 650.0 | 3,945.0 | 3,855.0 |

¹ New England includes Connecticut, Maine, Massachusetts, New Hampshire, Rhode Island, and Vermont.

² Includes data for States not published in this table.

Lamb Crop – States and United States: 2015 and 2016

| State | Ewes 1 year and older January 1 | | Lambs per 100 ewes January 1 | | Lamb crop ¹ | | |
|---------------------------------|---------------------------------|--------------|------------------------------|----------|------------------------|--------------|-------------------------|
| | 2015 | 2016 | 2015 | 2016 | 2015 | 2016 | 2016 as percent of 2015 |
| | (1,000 head) | (1,000 head) | (number) | (number) | (1,000 head) | (1,000 head) | (percent) |
| Arizona | 76.0 | 71.0 | 67 | 63 | 51.0 | 45.0 | 88 |
| California | 275.0 | 265.0 | 85 | 92 | 235.0 | 245.0 | 104 |
| Colorado | 184.0 | 184.0 | 109 | 98 | 200.0 | 180.0 | 90 |
| Idaho | 150.0 | 146.0 | 120 | 110 | 180.0 | 160.0 | 89 |
| Illinois | 38.0 | 39.0 | 118 | 118 | 45.0 | 46.0 | 102 |
| Indiana | 34.0 | 33.0 | 121 | 121 | 41.0 | 40.0 | 98 |
| Iowa | 100.0 | 100.0 | 124 | 125 | 124.0 | 125.0 | 101 |
| Kansas | 36.0 | 36.0 | 119 | 122 | 43.0 | 44.0 | 102 |
| Kentucky | 30.0 | 33.0 | 117 | 115 | 35.0 | 38.0 | 109 |
| Michigan | 40.0 | 42.0 | 123 | 119 | 49.0 | 50.0 | 102 |
| Minnesota | 73.0 | 70.0 | 123 | 129 | 90.0 | 90.0 | 100 |
| Missouri | 58.0 | 60.0 | 124 | 123 | 72.0 | 74.0 | 103 |
| Montana | 153.0 | 159.0 | 124 | 119 | 190.0 | 190.0 | 100 |
| Nebraska | 55.0 | 55.0 | 118 | 118 | 65.0 | 65.0 | 100 |
| Nevada | 48.0 | 40.0 | 102 | 105 | 49.0 | 42.0 | 86 |
| New England ² | 26.0 | 25.0 | 108 | 116 | 28.0 | 29.0 | 104 |
| New Mexico | 58.0 | 58.0 | 78 | 81 | 45.0 | 47.0 | 104 |
| New York | 51.0 | 50.0 | 118 | 120 | 60.0 | 60.0 | 100 |
| North Carolina | 18.0 | 20.0 | 106 | 95 | 19.0 | 19.0 | 100 |
| North Dakota | 42.0 | 44.0 | 119 | 116 | 50.0 | 51.0 | 102 |
| Ohio | 73.0 | 73.0 | 121 | 121 | 88.0 | 88.0 | 100 |
| Oklahoma | 31.0 | 29.0 | 100 | 114 | 31.0 | 33.0 | 106 |
| Oregon | 110.0 | 101.0 | 108 | 120 | 119.0 | 121.0 | 102 |
| Pennsylvania | 56.0 | 59.0 | 116 | 110 | 65.0 | 65.0 | 100 |
| South Dakota | 162.0 | 161.0 | 120 | 121 | 195.0 | 195.0 | 100 |
| Tennessee | 28.0 | 30.0 | 121 | 120 | 34.0 | 36.0 | 106 |
| Texas | 435.0 | 445.0 | 80 | 76 | 350.0 | 340.0 | 97 |
| Utah | 220.0 | 215.0 | 105 | 107 | 230.0 | 230.0 | 100 |
| Virginia | 50.0 | 50.0 | 116 | 116 | 58.0 | 58.0 | 100 |
| Washington | 31.0 | 31.0 | 110 | 116 | 34.0 | 36.0 | 106 |
| West Virginia | 22.0 | 24.0 | 114 | 117 | 25.0 | 28.0 | 112 |
| Wisconsin | 50.0 | 49.0 | 120 | 122 | 60.0 | 60.0 | 100 |
| Wyoming | 210.0 | 215.0 | 112 | 114 | 235.0 | 245.0 | 104 |
| Other States ³ | 87.0 | 93.0 | 92 | 81 | 80.0 | 75.0 | 94 |
| United States | 3,110.0 | 3,105.0 | 105 | 105 | 3,275.0 | 3,250.0 | 99 |

¹ Lamb crop is defined as lambs born in the Eastern States and lambs docked or branded in the Western States.

² New England includes Connecticut, Maine, Massachusetts, New Hampshire, Rhode Island, and Vermont.

³ Includes data for States not published in this table.

Market Sheep and Lamb Inventory by Weight Group – States and United States: January 1, 2016

| State | Market lambs | | | | | Market sheep | Total market sheep and lambs |
|---------------------------------|-----------------|----------------|-----------------|-----------------|--------------|--------------|------------------------------|
| | Under 65 pounds | 65 - 84 pounds | 85 - 105 pounds | Over 105 pounds | Total | | |
| | (1,000 head) | (1,000 head) | (1,000 head) | (1,000 head) | (1,000 head) | (1,000 head) | (1,000 head) |
| Arizona | 12.0 | 7.0 | 6.0 | 10.0 | 35.0 | 4.0 | 39.0 |
| California | 110.0 | 15.0 | 45.0 | 75.0 | 245.0 | 10.0 | 255.0 |
| Colorado | 3.0 | 9.0 | 22.0 | 179.0 | 213.0 | 2.0 | 215.0 |
| Idaho | 2.0 | 10.0 | 13.0 | 44.0 | 69.0 | 1.0 | 70.0 |
| Illinois | 2.0 | 3.0 | 2.0 | 2.0 | 9.0 | 1.0 | 10.0 |
| Indiana | 3.0 | 1.0 | 1.0 | 1.0 | 6.0 | 1.0 | 7.0 |
| Iowa | 5.0 | 7.0 | 16.0 | 21.0 | 49.0 | 1.0 | 50.0 |
| Kansas | 9.0 | 2.0 | 2.5 | 4.5 | 18.0 | 3.0 | 21.0 |
| Kentucky | 5.7 | 3.0 | 1.3 | 0.5 | 10.5 | 0.5 | 11.0 |
| Michigan | 3.0 | 6.0 | 5.0 | 7.0 | 21.0 | 3.0 | 24.0 |
| Minnesota | 7.0 | 7.0 | 8.0 | 14.0 | 36.0 | 1.0 | 37.0 |
| Missouri | 5.2 | 2.2 | 2.3 | 1.3 | 11.0 | 1.0 | 12.0 |
| Montana | 1.0 | 5.0 | 7.0 | 5.0 | 18.0 | 2.0 | 20.0 |
| Nebraska | 2.5 | 1.8 | 3.0 | 4.7 | 12.0 | 1.0 | 13.0 |
| Nevada | 2.0 | 2.0 | 3.0 | 3.0 | 10.0 | 1.0 | 11.0 |
| New England ¹ | 2.2 | 1.3 | 1.2 | 1.3 | 6.0 | 3.0 | 9.0 |
| New Mexico | 2.0 | 5.0 | 3.0 | 2.0 | 12.0 | 2.0 | 14.0 |
| New York | 3.0 | 4.0 | 3.0 | 1.0 | 11.0 | 1.0 | 12.0 |
| North Carolina | 2.4 | 0.8 | 0.6 | 0.2 | 4.0 | 1.0 | 5.0 |
| North Dakota | 1.0 | 5.0 | 8.0 | 5.0 | 19.0 | 1.0 | 20.0 |
| Ohio | 7.0 | 5.0 | 5.5 | 5.5 | 23.0 | 1.0 | 24.0 |
| Oklahoma | 5.5 | 1.0 | 1.0 | 1.0 | 8.5 | 0.5 | 9.0 |
| Oregon | 5.0 | 7.0 | 15.0 | 20.0 | 47.0 | 3.0 | 50.0 |
| Pennsylvania | 7.0 | 5.0 | 2.0 | 1.0 | 15.0 | 2.0 | 17.0 |
| South Dakota | 8.5 | 10.0 | 11.5 | 33.0 | 63.0 | 2.0 | 65.0 |
| Tennessee | 5.0 | 1.4 | 0.6 | 0.5 | 7.5 | 0.5 | 8.0 |
| Texas | 80.0 | 25.0 | 15.0 | 15.0 | 135.0 | 10.0 | 145.0 |
| Utah | 2.0 | 3.0 | 7.0 | 7.0 | 19.0 | 1.0 | 20.0 |
| Virginia | 6.5 | 5.0 | 2.0 | 0.5 | 14.0 | 1.0 | 15.0 |
| Washington | 1.5 | 2.5 | 1.5 | 2.0 | 7.5 | 1.5 | 9.0 |
| West Virginia | 3.0 | 1.0 | 1.5 | 0.5 | 6.0 | - | 6.0 |
| Wisconsin | 4.0 | 2.0 | 2.0 | 3.0 | 11.0 | 2.0 | 13.0 |
| Wyoming | 1.0 | 10.0 | 43.0 | 31.0 | 85.0 | 5.0 | 90.0 |
| Other States ² | 13.0 | 5.0 | 3.5 | 2.5 | 24.0 | 5.0 | 29.0 |
| United States | 332.0 | 180.0 | 264.0 | 504.0 | 1,280.0 | 75.0 | 1,355.0 |

- Represents zero.

¹ New England includes Connecticut, Maine, Massachusetts, New Hampshire, Rhode Island, and Vermont.

² Includes data for States not published in this table.

Market Sheep and Lamb Inventory by Weight Group – States and United States: January 1, 2017

| State | Market lambs | | | | | Market sheep | Total market sheep and lambs |
|---------------------------------|-----------------|----------------|-----------------|-----------------|--------------|--------------|------------------------------|
| | Under 65 pounds | 65 - 84 pounds | 85 - 105 pounds | Over 105 pounds | Total | | |
| | (1,000 head) | (1,000 head) | (1,000 head) | (1,000 head) | (1,000 head) | (1,000 head) | (1,000 head) |
| Arizona | 13.0 | 3.0 | 5.0 | 8.0 | 29.0 | 4.0 | 33.0 |
| California | 110.0 | 20.0 | 45.0 | 75.0 | 250.0 | 10.0 | 260.0 |
| Colorado | 5.0 | 14.0 | 48.0 | 124.0 | 191.0 | 4.0 | 195.0 |
| Idaho | 2.0 | 6.0 | 15.0 | 47.0 | 70.0 | 1.0 | 71.0 |
| Illinois | 4.0 | 2.0 | 1.0 | 1.0 | 8.0 | 1.0 | 9.0 |
| Indiana | 3.0 | 1.0 | 1.0 | 1.0 | 6.0 | 1.0 | 7.0 |
| Iowa | 5.0 | 8.0 | 20.0 | 21.0 | 54.0 | 1.0 | 55.0 |
| Kansas | 8.5 | 2.0 | 1.5 | 9.0 | 21.0 | 2.0 | 23.0 |
| Kentucky | 4.5 | 3.0 | 1.5 | 0.5 | 9.5 | 0.5 | 10.0 |
| Michigan | 3.0 | 5.0 | 5.0 | 9.0 | 22.0 | 2.0 | 24.0 |
| Minnesota | 7.0 | 8.0 | 8.5 | 13.5 | 37.0 | 2.0 | 39.0 |
| Missouri | 5.0 | 5.0 | 5.0 | 3.0 | 18.0 | 2.0 | 20.0 |
| Montana | 2.0 | 9.0 | 11.0 | 7.0 | 29.0 | 1.0 | 30.0 |
| Nebraska | 2.3 | 2.0 | 2.7 | 4.0 | 11.0 | 1.0 | 12.0 |
| Nevada | 1.0 | 1.5 | 2.5 | 3.0 | 8.0 | 1.0 | 9.0 |
| New England ¹ | 2.8 | 1.4 | 1.0 | 1.8 | 7.0 | 3.0 | 10.0 |
| New Mexico | 3.0 | 4.0 | 3.0 | 2.0 | 12.0 | 3.0 | 15.0 |
| New York | 3.0 | 4.0 | 3.0 | 1.0 | 11.0 | 2.0 | 13.0 |
| North Carolina | 2.1 | 1.0 | 0.5 | 0.4 | 4.0 | 1.0 | 5.0 |
| North Dakota | 1.0 | 4.0 | 3.0 | 5.0 | 13.0 | 1.0 | 14.0 |
| Ohio | 8.0 | 6.0 | 5.0 | 5.0 | 24.0 | 1.0 | 25.0 |
| Oklahoma | 6.5 | 1.0 | 1.0 | 1.0 | 9.5 | 0.5 | 10.0 |
| Oregon | 5.0 | 6.0 | 15.5 | 17.5 | 44.0 | 2.0 | 46.0 |
| Pennsylvania | 6.0 | 3.0 | 3.0 | 1.0 | 13.0 | 5.0 | 18.0 |
| South Dakota | 10.0 | 9.0 | 15.0 | 21.0 | 55.0 | 2.0 | 57.0 |
| Tennessee | 5.0 | 1.3 | 0.4 | 0.3 | 7.0 | 1.0 | 8.0 |
| Texas | 80.0 | 20.0 | 10.0 | 20.0 | 130.0 | 10.0 | 140.0 |
| Utah | 3.0 | 3.0 | 5.0 | 8.0 | 19.0 | 1.0 | 20.0 |
| Virginia | 8.0 | 5.0 | 4.0 | 1.0 | 18.0 | 1.0 | 19.0 |
| Washington | 2.5 | 2.5 | 1.0 | 1.0 | 7.0 | 2.0 | 9.0 |
| West Virginia | 3.0 | 1.0 | 1.5 | 0.5 | 6.0 | - | 6.0 |
| Wisconsin | 4.0 | 2.0 | 2.0 | 4.0 | 12.0 | 1.0 | 13.0 |
| Wyoming | 2.0 | 9.0 | 44.0 | 28.0 | 83.0 | 2.0 | 85.0 |
| Other States ² | 14.8 | 7.3 | 4.4 | 5.5 | 32.0 | 3.0 | 35.0 |
| United States | 345.0 | 180.0 | 295.0 | 450.0 | 1,270.0 | 75.0 | 1,345.0 |

- Represents zero.

¹ New England includes Connecticut, Maine, Massachusetts, New Hampshire, Rhode Island, and Vermont.

² Includes data for States not published in this table.

Sheep and Lamb Farm Slaughter and Death Loss – States and United States: 2015 and 2016

| State | Farm slaughter ¹ | | Deaths | | | |
|---------------------------------|-----------------------------|--------------|--------------|--------------|--------------|--------------|
| | | | Sheep | | Lambs | |
| | 2015 | 2016 | 2015 | 2016 | 2015 | 2016 |
| | (1,000 head) | (1,000 head) | (1,000 head) | (1,000 head) | (1,000 head) | (1,000 head) |
| Arizona | 12.4 | 13.0 | 7.0 | 6.0 | 3.0 | 6.0 |
| California | 4.4 | 4.3 | 14.0 | 15.0 | 9.0 | 12.0 |
| Colorado | 2.6 | 2.7 | 14.0 | 13.0 | 16.0 | 16.0 |
| Idaho | 2.6 | 2.6 | 9.0 | 9.0 | 11.0 | 9.0 |
| Illinois | 2.0 | 2.1 | 3.0 | 2.5 | 6.5 | 5.5 |
| Indiana | 3.4 | 3.3 | 2.0 | 2.0 | 6.0 | 6.0 |
| Iowa | 1.4 | 1.5 | 8.0 | 7.5 | 18.0 | 17.0 |
| Kansas | 2.6 | 2.3 | 3.0 | 2.5 | 6.0 | 6.0 |
| Kentucky | 0.5 | 0.9 | 3.0 | 2.5 | 7.0 | 5.0 |
| Michigan | 2.1 | 2.0 | 3.0 | 3.0 | 8.0 | 7.0 |
| Minnesota | 4.1 | 3.1 | 7.0 | 6.5 | 14.0 | 16.0 |
| Missouri | 1.0 | 1.0 | 4.0 | 4.0 | 10.0 | 10.0 |
| Montana | 1.5 | 1.9 | 11.0 | 11.0 | 16.0 | 16.0 |
| Nebraska | 0.3 | 0.5 | 4.0 | 3.5 | 9.0 | 8.5 |
| Nevada | 1.0 | 1.4 | 4.0 | 4.0 | 10.0 | 10.0 |
| New England ² | 2.3 | 2.0 | 1.5 | 1.5 | 2.3 | 2.5 |
| New Mexico | 5.4 | 5.4 | 6.0 | 5.5 | 4.5 | 7.0 |
| New York | 2.6 | 2.3 | 4.0 | 3.5 | 6.5 | 6.0 |
| North Carolina | 0.1 | 0.4 | 1.5 | 1.0 | 2.7 | 2.5 |
| North Dakota | 0.5 | 0.5 | 3.0 | 2.5 | 7.0 | 6.0 |
| Ohio | 3.1 | 3.0 | 6.0 | 6.0 | 11.0 | 12.0 |
| Oklahoma | 1.3 | 2.0 | 3.5 | 3.0 | 5.5 | 6.0 |
| Oregon | 4.1 | 4.1 | 9.0 | 8.0 | 6.0 | 8.0 |
| Pennsylvania | 2.0 | 1.5 | 5.0 | 4.0 | 9.0 | 8.0 |
| South Dakota | 1.5 | 1.2 | 9.0 | 8.0 | 24.0 | 21.0 |
| Tennessee | 1.3 | 1.1 | 3.5 | 3.0 | 6.5 | 6.0 |
| Texas | 2.1 | 2.5 | 37.0 | 35.0 | 67.0 | 65.0 |
| Utah | 6.2 | 6.1 | 10.0 | 11.0 | 15.0 | 15.0 |
| Virginia | 3.1 | 2.6 | 4.0 | 4.0 | 9.5 | 9.0 |
| Washington | 6.2 | 6.1 | 3.5 | 3.0 | 2.0 | 3.0 |
| West Virginia | 0.9 | 0.9 | 2.5 | 2.0 | 6.0 | 4.0 |
| Wisconsin | 1.5 | 1.5 | 3.0 | 3.0 | 7.0 | 8.0 |
| Wyoming | 2.0 | 2.5 | 9.0 | 9.5 | 11.0 | 12.0 |
| Other States ³ | 7.0 | 6.5 | 12.0 | 11.5 | 22.0 | 21.0 |
| United States | 95.1 | 94.8 | 229.0 | 217.0 | 374.0 | 372.0 |

¹ Excludes custom slaughter for farmers at commercial establishments.

² New England includes Connecticut, Maine, Massachusetts, New Hampshire, Rhode Island, and Vermont.

³ Includes data for States not published in this table.

Wool Production – States and United States: 2015 and 2016

| State | Sheep shorn | | Weight per fleece | | Production | |
|---------------------------------|----------------------|----------------------|-------------------|------------------|------------------------|------------------------|
| | 2015 (1,000 head) | 2016 (1,000 head) | 2015 (pounds) | 2016 (pounds) | 2015 (1,000 pounds) | 2016 (1,000 pounds) |
| Arizona | 110.0 | 95.0 | 5.6 | 6.4 | 620 | 610 |
| California | 430.0 | 410.0 | 6.6 | 6.6 | 2,850 | 2,700 |
| Colorado | 320.0 | 295.0 | 7.5 | 7.5 | 2,410 | 2,200 |
| Idaho | 200.0 | 195.0 | 8.3 | 8.2 | 1,650 | 1,600 |
| Illinois | 44.0 | 33.0 | 7.0 | 6.1 | 310 | 200 |
| Indiana | 34.0 | 35.0 | 6.2 | 6.3 | 210 | 220 |
| Iowa | 165.0 | 165.0 | 5.5 | 5.5 | 900 | 900 |
| Kansas | 42.0 | 43.0 | 6.5 | 6.6 | 275 | 285 |
| Kentucky | 12.0 | 11.0 | 6.7 | 6.4 | 80 | 70 |
| Michigan | 66.0 | 68.0 | 6.0 | 6.0 | 395 | 405 |
| Minnesota | 120.0 | 127.0 | 6.4 | 6.2 | 770 | 790 |
| Missouri | 44.0 | 43.0 | 6.0 | 6.0 | 265 | 260 |
| Montana | 205.0 | 200.0 | 9.0 | 9.0 | 1,840 | 1,800 |
| Nebraska | 63.0 | 64.0 | 7.3 | 7.0 | 460 | 450 |
| Nevada | 47.0 | 48.0 | 9.4 | 8.8 | 440 | 420 |
| New England ¹ | 31.0 | 30.0 | 6.5 | 6.7 | 200 | 200 |
| New Mexico | 82.0 | 89.0 | 7.9 | 7.9 | 645 | 700 |
| New York | 53.0 | 53.0 | 6.1 | 5.8 | 325 | 310 |
| North Carolina | 8.0 | 7.0 | 5.0 | 5.0 | 40 | 35 |
| North Dakota | 64.0 | 59.0 | 7.6 | 7.3 | 485 | 430 |
| Ohio | 81.0 | 79.0 | 6.0 | 5.9 | 490 | 470 |
| Oklahoma | 17.0 | 19.0 | 5.6 | 5.5 | 95 | 105 |
| Oregon | 152.0 | 142.0 | 6.6 | 6.3 | 1,000 | 900 |
| Pennsylvania | 48.0 | 45.0 | 6.6 | 6.9 | 315 | 310 |
| South Dakota | 239.0 | 230.0 | 7.6 | 7.6 | 1,820 | 1,750 |
| Tennessee | 19.0 | 18.0 | 5.5 | 5.6 | 105 | 100 |
| Texas | 270.0 | 255.0 | 7.2 | 6.7 | 1,950 | 1,700 |
| Utah | 255.0 | 245.0 | 9.4 | 9.4 | 2,390 | 2,300 |
| Virginia | 27.0 | 25.0 | 5.4 | 5.6 | 145 | 140 |
| Washington | 33.0 | 31.0 | 7.9 | 8.1 | 260 | 250 |
| West Virginia | 22.0 | 20.0 | 5.5 | 4.5 | 120 | 90 |
| Wisconsin | 51.0 | 51.0 | 7.2 | 6.7 | 365 | 340 |
| Wyoming | 270.0 | 280.0 | 9.2 | 8.6 | 2,480 | 2,400 |
| Other States ² | 51.0 | 50.0 | 6.1 | 6.0 | 310 | 300 |
| United States | 3,675.0 | 3,560.0 | 7.4 | 7.2 | 27,015 | 25,740 |

¹ New England includes Connecticut, Maine, Massachusetts, New Hampshire, Rhode Island, and Vermont.

² Includes data for States not published in this table.

Wool Price and Value – States and United States: 2015 and 2016

[United States value may not add due to rounding]

| State | Price per pound | | Value ¹ | |
|---------------------------------|-------------------|-------------------|-------------------------|-------------------------|
| | 2015 (dollars) | 2016 (dollars) | 2015 (1,000 dollars) | 2016 (1,000 dollars) |
| Arizona | 1.15 | 1.00 | 713 | 610 |
| California | 1.55 | 1.50 | 4,418 | 4,050 |
| Colorado | 1.80 | 1.70 | 4,338 | 3,740 |
| Idaho | 1.53 | 1.59 | 2,525 | 2,544 |
| Illinois | 0.75 | 0.79 | 233 | 158 |
| Indiana | 0.75 | 0.50 | 158 | 110 |
| Iowa | 0.79 | 0.56 | 711 | 504 |
| Kansas | 0.87 | 0.89 | 239 | 254 |
| Kentucky | 0.80 | 0.90 | 64 | 63 |
| Michigan | 0.72 | 0.71 | 284 | 288 |
| Minnesota | 0.79 | 0.62 | 608 | 490 |
| Missouri | 0.73 | 0.88 | 193 | 229 |
| Montana | 1.90 | 1.90 | 3,496 | 3,420 |
| Nebraska | 0.90 | 0.94 | 414 | 423 |
| Nevada | 2.10 | 2.00 | 924 | 840 |
| New England ² | 0.80 | 0.85 | 160 | 170 |
| New Mexico | 1.40 | 1.50 | 903 | 1,050 |
| New York | 0.60 | 0.70 | 195 | 217 |
| North Carolina | 1.20 | 1.50 | 48 | 53 |
| North Dakota | 1.28 | 1.13 | 621 | 486 |
| Ohio | 0.74 | 0.53 | 363 | 249 |
| Oklahoma | 0.70 | 0.80 | 67 | 84 |
| Oregon | 1.73 | 1.38 | 1,730 | 1,242 |
| Pennsylvania | 0.60 | 0.60 | 189 | 186 |
| South Dakota | 1.26 | 1.43 | 2,293 | 2,503 |
| Tennessee | 0.84 | 0.90 | 88 | 90 |
| Texas | 1.64 | 1.75 | 3,198 | 2,975 |
| Utah | 1.70 | 1.80 | 4,063 | 4,140 |
| Virginia | 1.05 | 1.25 | 152 | 175 |
| Washington | 1.90 | 2.10 | 494 | 525 |
| West Virginia | 1.00 | 1.25 | 120 | 113 |
| Wisconsin | 0.75 | 0.70 | 274 | 238 |
| Wyoming | 1.80 | 1.90 | 4,464 | 4,560 |
| Other States ³ | 1.50 | 1.45 | 465 | 435 |
| United States | 1.45 | 1.45 | 39,205 | 37,214 |

¹ Production multiplied by marketing year average price. United States value is the summation of State values.

² New England includes Connecticut, Maine, Massachusetts, New Hampshire, Rhode Island, and Vermont.

³ Includes data for States not published in this table.

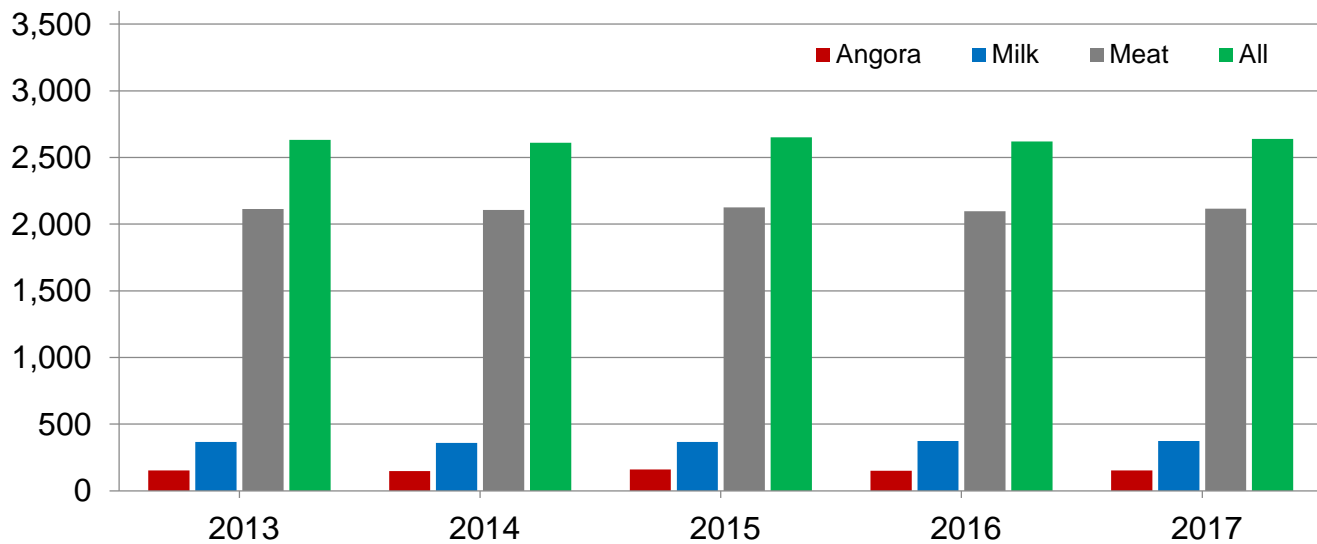
Goat and Kid Inventory by Class – United States: January 1, 2016 and 2017

| Class | 2016 | 2017 | 2017 as percent of 2016 |
|---|-----------|-----------|-------------------------|
| | (head) | (head) | (percent) |
| All goats and kids | 2,620,000 | 2,640,000 | 101 |
| All, breeding goats | 2,161,000 | 2,171,000 | 100 |
| Replacement kids - under one year | 391,000 | 393,000 | 101 |
| Does - one year old and older | 1,607,000 | 1,614,000 | 100 |
| Bucks - one year old and older | 163,000 | 164,000 | 101 |
| All, market goats and kids | 459,000 | 469,000 | 102 |
| Kid crop ¹ | 1,631,000 | 1,641,000 | 101 |

¹ Kid crop refers to kids born the previous year.

All Goat Inventory – United States: January 1

Thousand head



Angora Goat Inventory by Class – United States: January 1, 2016 and 2017

| Class | 2016 | 2017 | 2017 as percent of 2016 |
|---|---------|---------|-------------------------|
| | (head) | (head) | (percent) |
| Angora goats and kids | 150,000 | 152,000 | 101 |
| Angora, breeding goats | 130,000 | 131,000 | 101 |
| Replacement kids - under one year | 19,500 | 20,000 | 103 |
| Does - one year old and older | 103,500 | 104,000 | 100 |
| Bucks - one year old and older | 7,000 | 7,000 | 100 |
| Angora, market goats and kids | 20,000 | 21,000 | 105 |
| Kid crop ¹ | 78,000 | 76,000 | 97 |

¹ Kid crop refers to kids born the previous year.

Milk Goat Inventory by Class – United States: January 1, 2016 and 2017

| Class | 2016 | 2017 | 2017 as percent of 2016 |
|---|---------|---------|-------------------------|
| | (head) | (head) | (percent) |
| Milk goats and kids | 373,000 | 373,000 | 100 |
| Milk, breeding goats | 335,000 | 334,000 | 100 |
| Replacement kids - under one year | 71,000 | 71,000 | 100 |
| Does - one year old and older | 240,000 | 239,000 | 100 |
| Bucks - one year old and older | 24,000 | 24,000 | 100 |
| Milk, market goats and kids | 38,000 | 39,000 | 103 |
| Kid crop ¹ | 258,000 | 260,000 | 101 |

¹ Kid crop refers to kids born the previous year.

Meat and Other Goat Inventory by Class – United States: January 1, 2016 and 2017

| Class | 2016 | 2017 | 2017 as percent of 2016 |
|---|-----------|-----------|-------------------------|
| | (head) | (head) | (percent) |
| Meat and other goats and kids | 2,097,000 | 2,115,000 | 101 |
| Meat and other, breeding goats | 1,696,000 | 1,706,000 | 101 |
| Replacement kids - under one year | 300,500 | 302,000 | 100 |
| Does - one year old and older | 1,263,500 | 1,271,000 | 101 |
| Bucks - one year old and older | 132,000 | 133,000 | 101 |
| Meat and other, market goats and kids | 401,000 | 409,000 | 102 |
| Kid crop ¹ | 1,295,000 | 1,305,000 | 101 |

¹ Kid crop refers to kids born the previous year.

Angora Goat Inventory – States and United States: January 1, 2016 and 2017

| State | 2016 | 2017 | 2017 as percent of 2016 |
|---------------------------------|---------|---------|-------------------------|
| | (head) | (head) | (percent) |
| Arizona | 35,000 | 35,000 | 100 |
| California | 3,600 | 3,400 | 94 |
| New Mexico | 10,000 | 10,500 | 105 |
| Texas | 78,000 | 80,000 | 103 |
| Other States ¹ | 23,400 | 23,100 | 99 |
| United States | 150,000 | 152,000 | 101 |

¹ Includes data for States not published in this table.

Mohair Production, Price, and Value – States and United States: 2015 and 2016

[United States value may not add due to rounding]

| State | Goats clipped | | Average clip per goat | | Production | | Price per pound | | Value ¹ | |
|------------------------------|---------------|---------|-----------------------|----------|----------------|----------------|-----------------|-----------|--------------------|-----------------|
| | 2015 | 2016 | 2015 | 2016 | 2015 | 2016 | 2015 | 2016 | 2015 | 2016 |
| | (head) | (head) | (pounds) | (pounds) | (1,000 pounds) | (1,000 pounds) | (dollars) | (dollars) | (1,000 dollars) | (1,000 dollars) |
| Arizona | 29,000 | 30,000 | 4.0 | 4.2 | 115 | 125 | 1.60 | 1.40 | 184 | 175 |
| California | 2,000 | 2,000 | 5.0 | 5.0 | 10 | 10 | 6.00 | 6.00 | 60 | 60 |
| New Mexico | 8,000 | 8,000 | 3.8 | 3.8 | 30 | 30 | 1.40 | 1.20 | 42 | 36 |
| Texas | 78,000 | 80,000 | 6.2 | 6.4 | 480 | 510 | 7.10 | 6.00 | 3,408 | 3,060 |
| Other States ² .. | 22,000 | 21,000 | 5.9 | 6.0 | 130 | 125 | 2.75 | 2.55 | 358 | 319 |
| United States ... | 139,000 | 141,000 | 5.5 | 5.7 | 765 | 800 | 5.30 | 4.56 | 4,052 | 3,650 |

¹ Production multiplied by marketing year average price. United States value is summation of State values.

² Includes data for States not published in this table.

Milk Goat Inventory – States and United States: January 1, 2016 and 2017

| State | 2016 | 2017 | 2017 as percent of 2016 |
|---------------------------------|---------|---------|-------------------------|
| | (head) | (head) | (percent) |
| Alabama | 3,800 | 3,900 | 103 |
| Arkansas | 4,600 | 4,500 | 98 |
| California | 39,000 | 41,000 | 105 |
| Colorado | 10,000 | 9,000 | 90 |
| Florida | 9,500 | 10,000 | 105 |
| Georgia | 3,100 | 3,500 | 113 |
| Idaho | 3,800 | 4,200 | 111 |
| Illinois | 5,600 | 6,000 | 107 |
| Indiana | 11,500 | 11,000 | 96 |
| Iowa | 33,000 | 30,500 | 92 |
| Kansas | 4,200 | 4,700 | 112 |
| Kentucky | 5,000 | 5,500 | 110 |
| Michigan | 11,800 | 12,500 | 106 |
| Minnesota | 13,500 | 12,000 | 89 |
| Missouri | 11,300 | 10,300 | 91 |
| Nebraska | 3,200 | 3,700 | 116 |
| New England ¹ | 14,500 | 14,200 | 98 |
| New York | 12,300 | 13,700 | 111 |
| North Carolina | 8,100 | 6,400 | 79 |
| Ohio | 9,500 | 10,000 | 105 |
| Oklahoma | 6,600 | 6,000 | 91 |
| Oregon | 12,200 | 12,600 | 103 |
| Pennsylvania | 14,000 | 15,000 | 107 |
| South Carolina | 3,400 | 3,000 | 88 |
| Tennessee | 7,200 | 7,000 | 97 |
| Texas | 22,000 | 22,000 | 100 |
| Virginia | 5,700 | 6,000 | 105 |
| Washington | 8,000 | 7,500 | 94 |
| Wisconsin | 44,000 | 44,000 | 100 |
| Other States ² | 32,600 | 33,300 | 102 |
| United States | 373,000 | 373,000 | 100 |

¹ New England includes Connecticut, Maine, Massachusetts, New Hampshire, Rhode Island, and Vermont.

² Includes data for States not published in this table.

Meat and Other Goat Inventory – States and United States: January 1, 2016 and 2017

| State | 2016 | 2017 | 2017 as percent of 2016 |
|---------------------------------|-----------|-----------|-------------------------|
| | (head) | (head) | (percent) |
| Alabama | 47,000 | 45,000 | 96 |
| Arizona | 27,000 | 27,000 | 100 |
| Arkansas | 36,000 | 36,000 | 100 |
| California | 90,000 | 87,000 | 97 |
| Colorado | 24,000 | 25,000 | 104 |
| Florida | 45,000 | 44,000 | 98 |
| Georgia | 72,000 | 67,000 | 93 |
| Illinois | 19,000 | 18,000 | 95 |
| Indiana | 32,000 | 33,000 | 103 |
| Iowa | 28,000 | 32,000 | 114 |
| Kansas | 43,000 | 46,000 | 107 |
| Kentucky | 59,000 | 56,000 | 95 |
| Louisiana | 19,000 | 18,000 | 95 |
| Minnesota | 21,000 | 22,000 | 105 |
| Mississippi | 20,000 | 19,000 | 95 |
| Missouri | 70,000 | 75,000 | 107 |
| New York | 17,000 | 17,000 | 100 |
| North Carolina | 45,000 | 50,000 | 111 |
| Ohio | 44,000 | 42,000 | 95 |
| Oklahoma | 91,000 | 92,000 | 101 |
| Oregon | 27,000 | 27,000 | 100 |
| Pennsylvania | 37,000 | 37,000 | 100 |
| South Carolina | 34,000 | 32,000 | 94 |
| Tennessee | 115,000 | 110,000 | 96 |
| Texas | 765,000 | 790,000 | 103 |
| Virginia | 47,000 | 45,000 | 96 |
| Washington | 22,000 | 20,000 | 91 |
| West Virginia | 21,000 | 21,000 | 100 |
| Other States ¹ | 180,000 | 182,000 | 101 |
| United States | 2,097,000 | 2,115,000 | 101 |

¹ Includes data for States not published in this table.

Statistical Methodology

Survey Procedures: A random sample of United States producers was surveyed to provide data for these estimates. Survey procedures ensured that all sheep and goat producers, regardless of size, had a chance to be included in the survey. Large producers were sampled more heavily than small operations. About 22,300 operators were contacted during the first half of January by mail, telephone and face-to-face personal interview and 68 percent of the reports were usable. Regardless of when operators responded, they were asked to report inventories as of January 1.

Estimating Procedures: These sheep and goat estimates were prepared by the Agricultural Statistics Board. National and State survey data were reviewed for reasonableness and with estimates from past years. A projected balance sheet for calendar year 2016 was also used. The balance sheet begins with the previous inventory estimate, adds estimates of births and imports, and subtracts estimates of slaughter, exports and deaths. This indicated ending inventory level is compared with the Agricultural Statistics Board estimate for reasonableness.

Revision Policy: Revisions to previous estimates are made to improve the current estimate. Previous year estimates are subject to revision when current estimates are made. Estimates will also be reviewed after data from the Department of Agriculture's five-year Census of Agriculture are available. No revisions will be made after that date.

Reliability: Since all operations raising sheep and goats are not included in the sample, survey estimates are subject to sampling variability. Survey results are also subject to non-sampling errors, such as omissions, duplications, and mistakes in reporting, recording, and processing the data. The effects of these errors cannot be measured directly. They are minimized through rigid quality controls in the data collection process and through a careful review of all reported data for consistency and reasonableness.

To assist users in evaluating reliability of the estimates in this report, the "**Root Mean Square Error**" is shown for selected sheep items in the following table. The "Root Mean Square Error" is a statistical measure based on past performance and is computed using the differences between the first and latest estimates.

The "Root Mean Square Error" for sheep and lamb inventory estimates over the past 10 years is 0.8 percent. This means that chances are 2 out of 3 that the final estimate will not be above or below the current estimate of 5.2 million head by more than 0.8 percent. Chances are 9 out of 10 that the difference will not exceed 1.5 percent.

The "Root Mean Square Error" for sheep shorn over the past 10 years is 1.2 percent. This means that chances are 2 out of 3 that the final estimate will not be above or below the current estimate of 3.56 million head by more than 1.2 percent. Chances are 9 out of 10 that the difference will not exceed 2.3 percent.

Also shown in the table is a 10-year record showing the range between the first inventory estimate and the latest estimate. Using estimates for All Sheep and Lambs as an example, changes between the first inventory estimate and the latest estimate during the past 10 years have averaged 35,000 head, ranging from 0 to 105,000 head. The initial inventory estimate of All Sheep and Lambs has been below the latest estimate 4 times and above the latest estimate 4 times in the last 10 years.

For Sheep and Lambs Shorn, changes between the first inventory estimate and the latest estimate during the past 10 years have averaged 23,000 head, ranging from 0 to 140,000 head. The initial inventory estimate of Sheep and Lambs Shorn has been below the latest estimate 0 times and above 5 times in the last 10 years.

Reliability of January 1 Sheep and Lamb Estimates

[Based on data for the past ten years]

| Item | Root mean square error | 90 percent confidence level | Difference between first and latest estimate | | | | |
|---------------------------|------------------------|-----------------------------|--|----------------|----------------|--------------|--------------|
| | | | Average | Smallest | Largest | Years | |
| | | | | | | Below latest | Above latest |
| | (percent) | (percent) | (1,000 head) | (1,000 head) | (1,000 head) | (number) | (number) |
| All sheep and lambs | 0.8 | 1.5 | 35 | 0 | 105 | 4 | 4 |
| Breeding sheep | 0.8 | 1.5 | 23 | 0 | 74 | 3 | 4 |
| Lamb crop | 1.7 | 3.1 | 36 | 0 | 155 | 1 | 5 |
| Sheep shorn | 1.2 | 2.3 | 23 | 0 | 140 | 0 | 5 |
| | (percent) | (percent) | (1,000 pounds) | (1,000 pounds) | (1,000 pounds) | (number) | (number) |
| Wool production | 1.0 | 1.9 | 147 | 0 | 870 | 1 | 7 |

Information Contacts

Listed below are the commodity specialists in the Livestock Branch of the National Agricultural Statistics Service to contact for additional information. E-mail inquiries may be sent to nass@nass.usda.gov.

| | |
|---|----------------|
| Dan Kerestes, Chief, Livestock Branch | (202) 720-3570 |
| Scott Hollis, Head, Livestock Section | (202) 690-2424 |
| Sherry Bertramsen – Livestock Slaughter | (202) 720-3240 |
| David Colwell – Sheep and Goats | (202) 720-8784 |
| Donnie Fike – Dairy Products | (202) 690-3236 |
| Michael Klamm – Cattle, Cattle on Feed | (202) 720-3040 |
| Mike Miller – Milk Production and Milk Cows | (202) 720-3278 |
| Seth Riggins – Hogs and Pigs | (202) 720-3106 |

Access to NASS Reports

For your convenience, you may access NASS reports and products the following ways:

- All reports are available electronically, at no cost, on the NASS web site: www.nass.usda.gov
- Both national and state specific reports are available via a free e-mail subscription. To set-up this free subscription, visit www.nass.usda.gov and click on “National” or “State” in upper right corner above “search” box to create an account and select the reports you would like to receive.

For more information on NASS surveys and reports, call the NASS Agricultural Statistics Hotline at (800) 727-9540, 7:30 a.m. to 4:00 p.m. ET, or e-mail: nass@nass.usda.gov.

The U.S. Department of Agriculture (USDA) prohibits discrimination against its customers, employees, and applicants for employment on the basis of race, color, national origin, age, disability, sex, gender identity, religion, reprisal, and where applicable, political beliefs, marital status, familial or parental status, sexual orientation, or all or part of an individual's income is derived from any public assistance program, or protected genetic information in employment or in any program or activity conducted or funded by the Department. (Not all prohibited bases will apply to all programs and/or employment activities.)

If you wish to file a Civil Rights program complaint of discrimination, complete the [USDA Program Discrimination Complaint Form](#) (PDF), found online at http://www.ascr.usda.gov/complaint_filing_cust.html, or at any USDA office, or call (866) 632-9992 to request the form. You may also write a letter containing all of the information requested in the form. Send your completed complaint form or letter to us by mail at U.S. Department of Agriculture, Director, Office of Adjudication, 1400 Independence Avenue, S.W., Washington, D.C. 20250-9410, by fax (202) 690-7442 or email at program.intake@usda.gov.



United States Department of Agriculture

USDA's
93rd
Annual

Agricultural
Outlook Forum

A New Horizon:

The Future of Agriculture

Early Registration
\$450 ends
January 26, 2017
\$500 after
January 27, 2017

February 23-24, 2017
Crystal Gateway Marriott Hotel
Arlington, Virginia

Register: www.usda.gov/oce/forum