

Attachment 5: NEARS Environmental Assessment Training on Foodborne Illness Outbreaks (screenshots)

This training on conducting environmental assessments during foodborne illness outbreak investigations contains 8 lessons (Screenshot 1). NEARS participants are encouraged to take this training.

Screenshot 1



Lesson 1 provides an overview of the training (Screenshot 2).

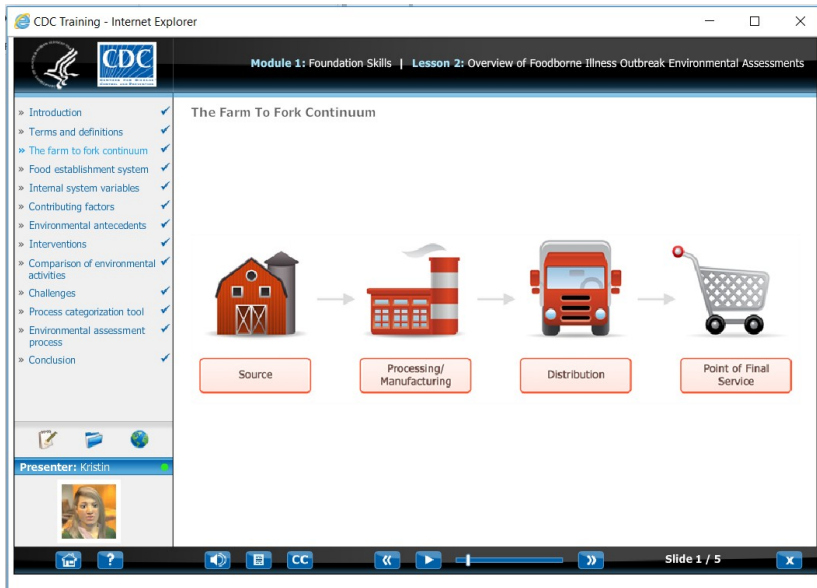
Screenshot 2



Attachment 5: NEARS Environmental Assessment Training on Foodborne Illness Outbreaks (screenshots)

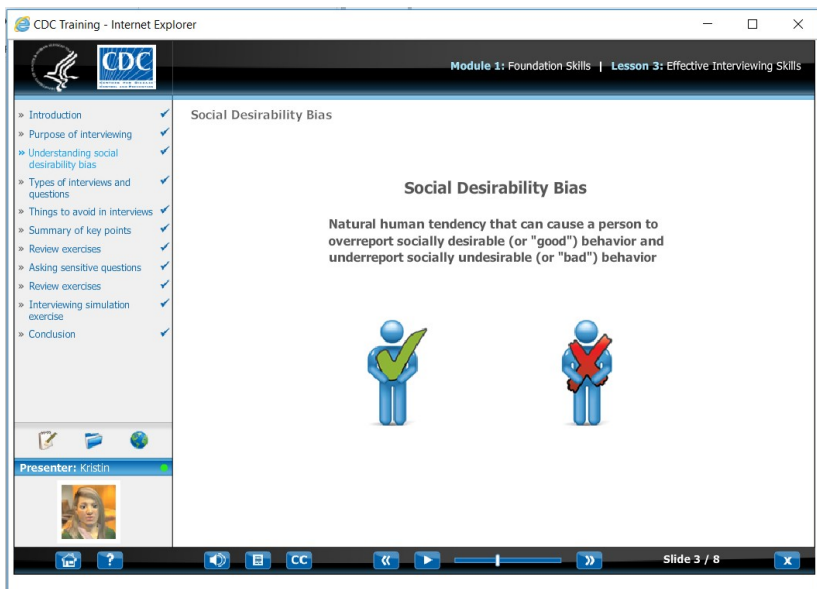
Lesson 2 provides an overview of foodborne outbreak environmental assessments (Screenshot 3).

Screenshot 3



Lesson 3 provides information on conducting effective interviews to learn information from food workers and managers during an investigation (Screenshot 4).

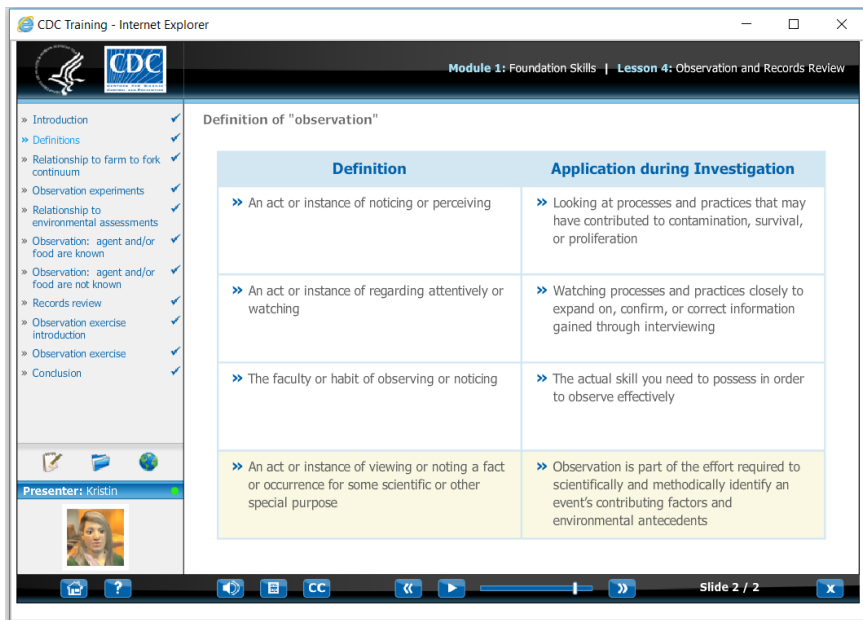
Screenshot 4



Attachment 5: NEARS Environmental Assessment Training on Foodborne Illness Outbreaks (screenshots)

Lesson 4 provides information on conducting observations to learn information from the environment during the investigation (Screenshot 5).

Screenshot 5



CDC Training - Internet Explorer

Module 1: Foundation Skills | Lesson 4: Observation and Records Review

Definition of "observation"

Definition	Application during Investigation
» An act or instance of noticing or perceiving	» Looking at processes and practices that may have contributed to contamination, survival, or proliferation
» An act or instance of regarding attentively or watching	» Watching processes and practices closely to expand on, confirm, or correct information gained through interviewing
» The faculty or habit of observing or noticing	» The actual skill you need to possess in order to observe effectively
» An act or instance of viewing or noting a fact or occurrence for some scientific or other special purpose	» Observation is part of the effort required to scientifically and methodically identify an event's contributing factors and environmental antecedents

Presenter: Kristin

Slide 2 / 2

Lesson 5 provides information on when, where, and how to collect environmental samples during an investigation (Screenshot 6).

Screenshot 6



CDC Training - Internet Explorer

Module 1: Foundation Skills | Lesson 5: Environmental Sampling

Deciding what to collect

What types of samples to collect?

Presenter: Kristin

Slide 1 / 2

Attachment 5: NEARS Environmental Assessment Training on Foodborne Illness Outbreaks (screenshots)

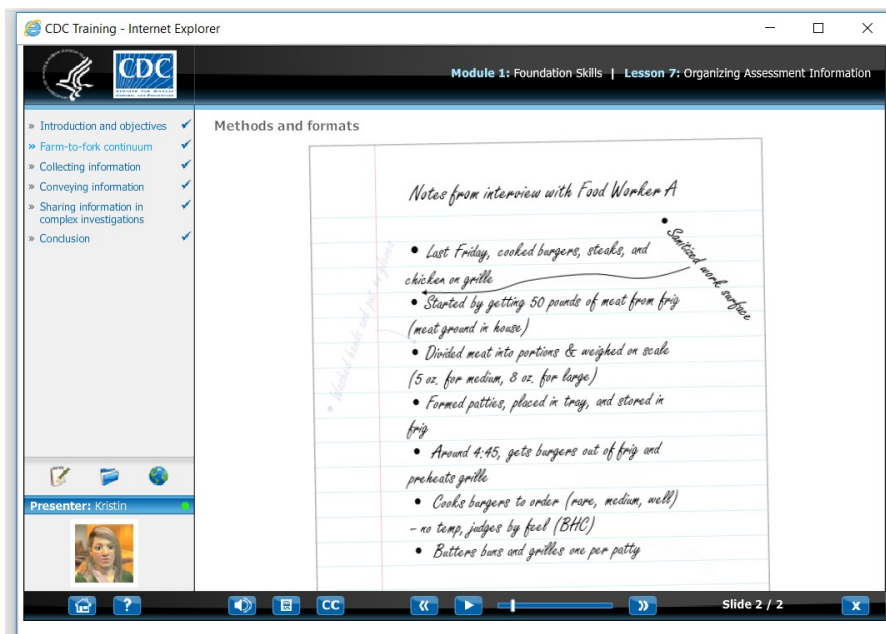
Lesson 6 provides information on the importance of critical thinking during investigations, and how to improve critical thinking skills (Screenshot 7).

Screenshot 7



Lesson 7 provides information on how to organize environmental assessment information to complete the investigation (Screenshot 8).

Screenshot 8



Lesson 8 provides information no implementing control strategies in the outbreak establishment to stop the current outbreak and prevent future ones (Screenshot 9).

Attachment 5: NEARS Environmental Assessment Training on Foodborne Illness Outbreaks (screenshots)

Screenshot 9

The screenshot shows a presentation slide from the CDC Training platform. The slide is titled "Example" and features an illustration of two stylized human figures, one orange and one green, standing and talking. Above them are thought bubbles containing icons for a gear and a person. A blue callout box at the bottom of the illustration says "Make recommendations for control strategies". To the right of the illustration, there are two bullet points: "» Immediate control measures" and "» Longer-term prevention strategies". The slide is part of "Module 1: Foundation Skills | Lesson 8: Control Strategies and Concluding Actions". The left sidebar shows a table of contents with 14 items, all marked with a checkmark. The presenter is identified as Kristin. The bottom navigation bar shows "Slide 1 / 2".

The training concludes with a 40-item test that assess mastery of the course material (Screenshot 10).

Screenshot 10

The screenshot shows a mastery test question in the CDC Training platform. The question is titled "Question 1" and features a large green question mark icon. The text of the question reads: "Please read [this account](#) of a local market deli's handling of rotisserie chickens, then answer the following question. The background information mentions that business has picked up due to the popularity of the rotisserie chicken product. Which food establishment system component is the fact that business has picked up?". Below the text are five radio button options: "Inputs", "Processes", "Internal System Variables", "Outputs", and "Outcomes". A "DONE" button with an exclamation mark is located at the bottom right of the question area. The left sidebar shows "» Mastery Test" as the selected item. The presenter is identified as Kristin. The bottom navigation bar shows "Slide 4 / 45".