

# Strategies

Support  
**Test of Capacity-Building Models within Diverse Cohorts** of Museums, Libraries or other Institutional Partners

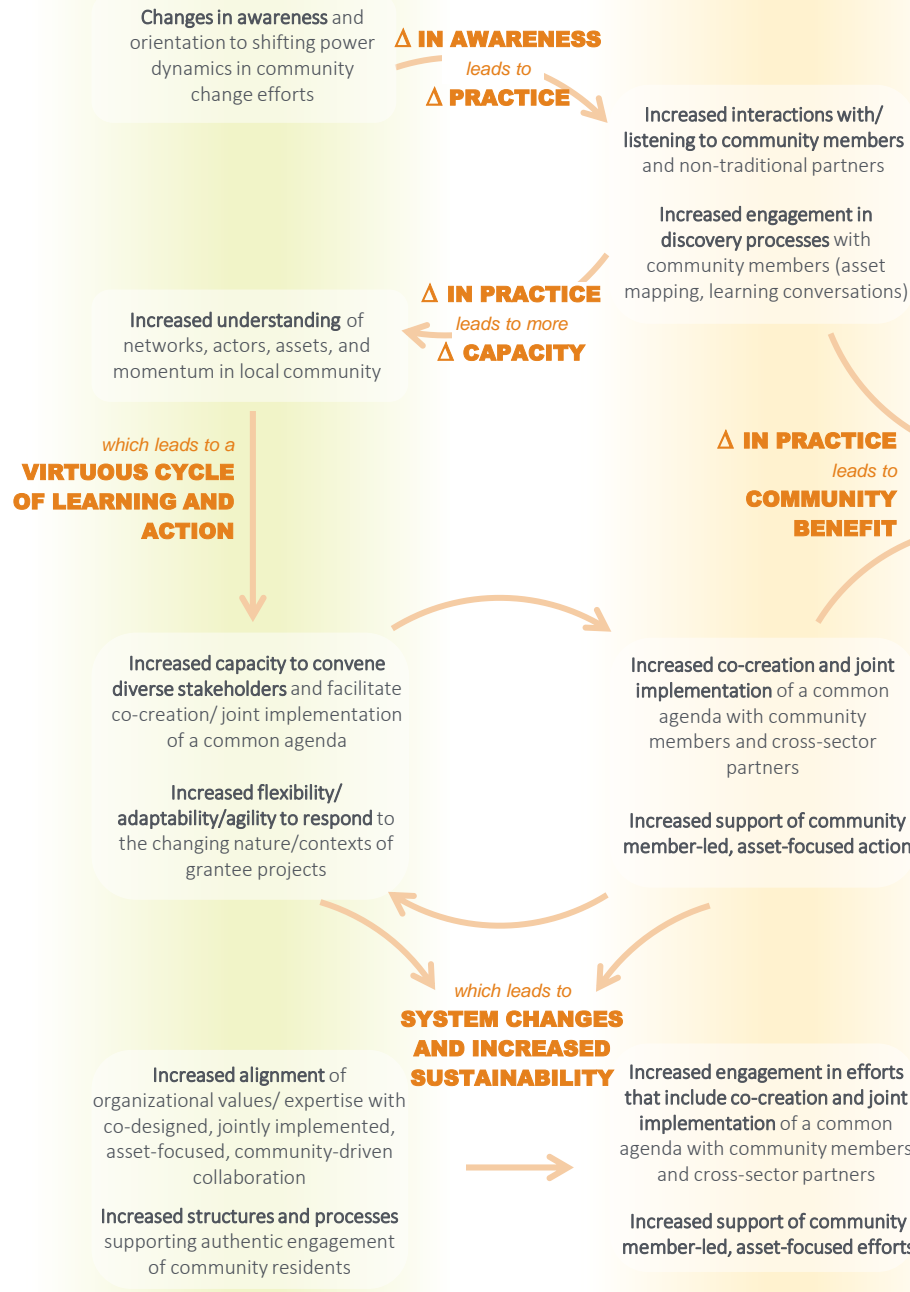
- Models with universal applicability and best potential for sustainability
- Grants to support local projects
- Third party capacity builder to provide training and technical assistance
- Additional information, resources, technical assistance, and support
- Convene and facilitate peer learning networks within grantee cohorts
- Support local project evaluation and data-based reflection/course correction

Support  
**Learning and Diffusion of Best Practices** Among Museum and Library Sectors and Investors in Community Change

- Fund cohort-level and cross-grantee evaluation by independent evaluation partner
- Disseminate best practices, tools, and lessons learned throughout grantee networks, IMLS, and nationally

# Capacity & Practice Changes

among libraries and museums



# Local Network & Community Changes



**Increased number of/ deepened connections, including with community members and non-traditional partners**

**Increased agency and empowerment among community members**

**Increased social well-being (aligned with co-determined project goals)**

**Increased perceptions that museums and libraries are trusted and important partners in strengthening communities**

**Increased local investment in community member-led community transformation**

**Museums and libraries are well-supported to innovate and continuously learn**

**Communities strive and thrive**