



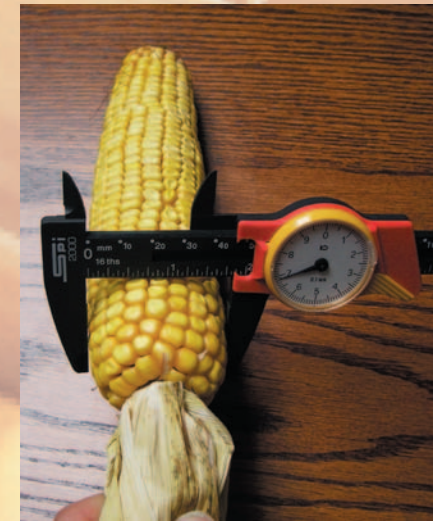
CODE 6 - DENT

Shucks are nearly dry, but not open. Most of the ears and stalks are brown.



CODE 6 - DENT

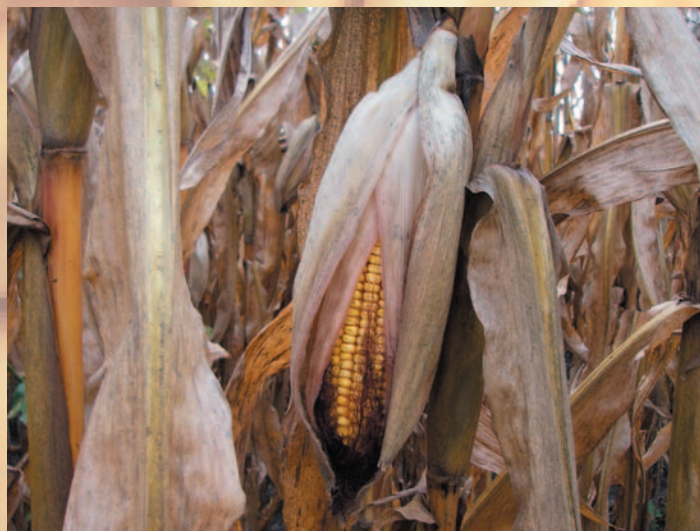
Maturity line on kernels has not reached the cob. Ears are firm and solid. Kernels may be hard to scratch at the surface but still soft near the cob.



The ear is completely husked so it does not interfere with the caliper jaws. Measurement is taken one inch from the butt of the ear. The ear is in the mouth of the caliper with the jaws at a 90 degree angle to the ear. The caliper is read by reading the top of the caliper to get the tens place, and reading the dial to get the units and tenths decimal. This caliper measurement would be recorded as 46.8mm (add arrows and numbers to show where the 4, 6 and 8 are read if possible)



Hold the zero point of the tape at the butt of the cob. Measure the length of the kernel rows in inches and tenths of inches. Do not include areas of the cob with missing or damaged kernels. If part of the ear is rotten or damaged, visualize the kernels present forming a continuous row from the butt toward the tip.



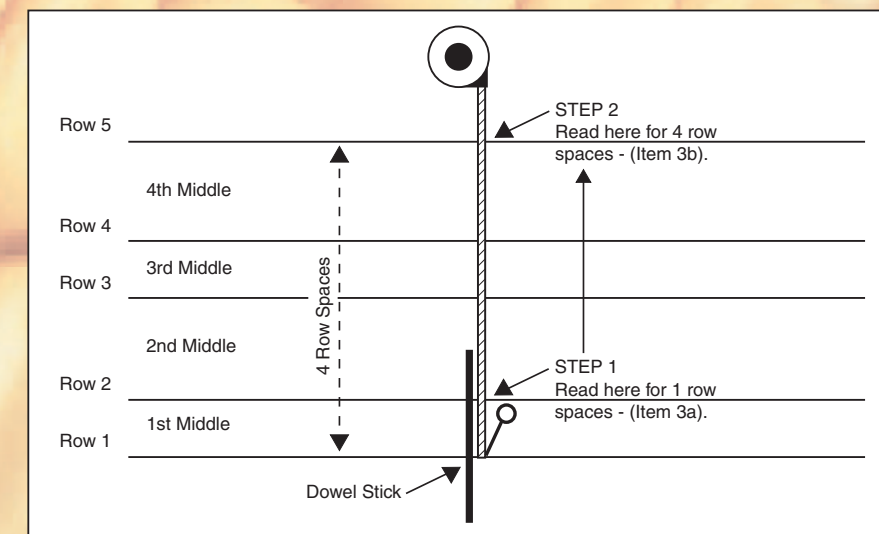
CODE 7 - MATURE

Shucks are dry and beginning to open. No green foliage is present. Most ears have tipped completely over and point towards the ground.



CODE 7 - MATURE

Kernels can be shelled off the cob fairly easily. Moisture content may be as high as 32-33%. No milk can be squeezed from the top of the kernel next to the cob. The "black layer" is another indication of maturity. This is an area near the tip of the kernel that appears dark.



The width across 4 row spaces is measured from the center of the plants in Row 1 to the center of the plants in Row 5.



CODE 2 - PRE-BLISTER

Ear shoots are present with some silks showing. Most silks are green, yellow, or white in color. Only cob or hard spikelets can be felt through the husk.



CODE 2 - PRE-BLISTER

Spikelets contain little or no watery, clear liquid.



CODE 4 - MILK

Plant or shuck is green. Ears are erect and silks protruding from the husks have turned brown and dry.



CODE 4 - MILK

Most kernels are full of milk-like substance. Kernels are not fully grown and show little or no denting.



CODE 3 - BLISTER

Most silks protruding from the husks are beginning to turn brown. Kernels can be felt through the husk.



CODE 3 - BLISTER

Most spikelets have swollen to form kernels that contain watery, clear liquid.



CODE 5 - DOUGH

Ear is beginning to lean away from the stalk and shucks are starting to take on a light rust color. Visible silk is completely brown and dry. About half the kernels are dented and contain milk or dough-like substance.



CODE 5 - DOUGH

Maturity line has not moved halfway to the cob on a majority of the kernels.