

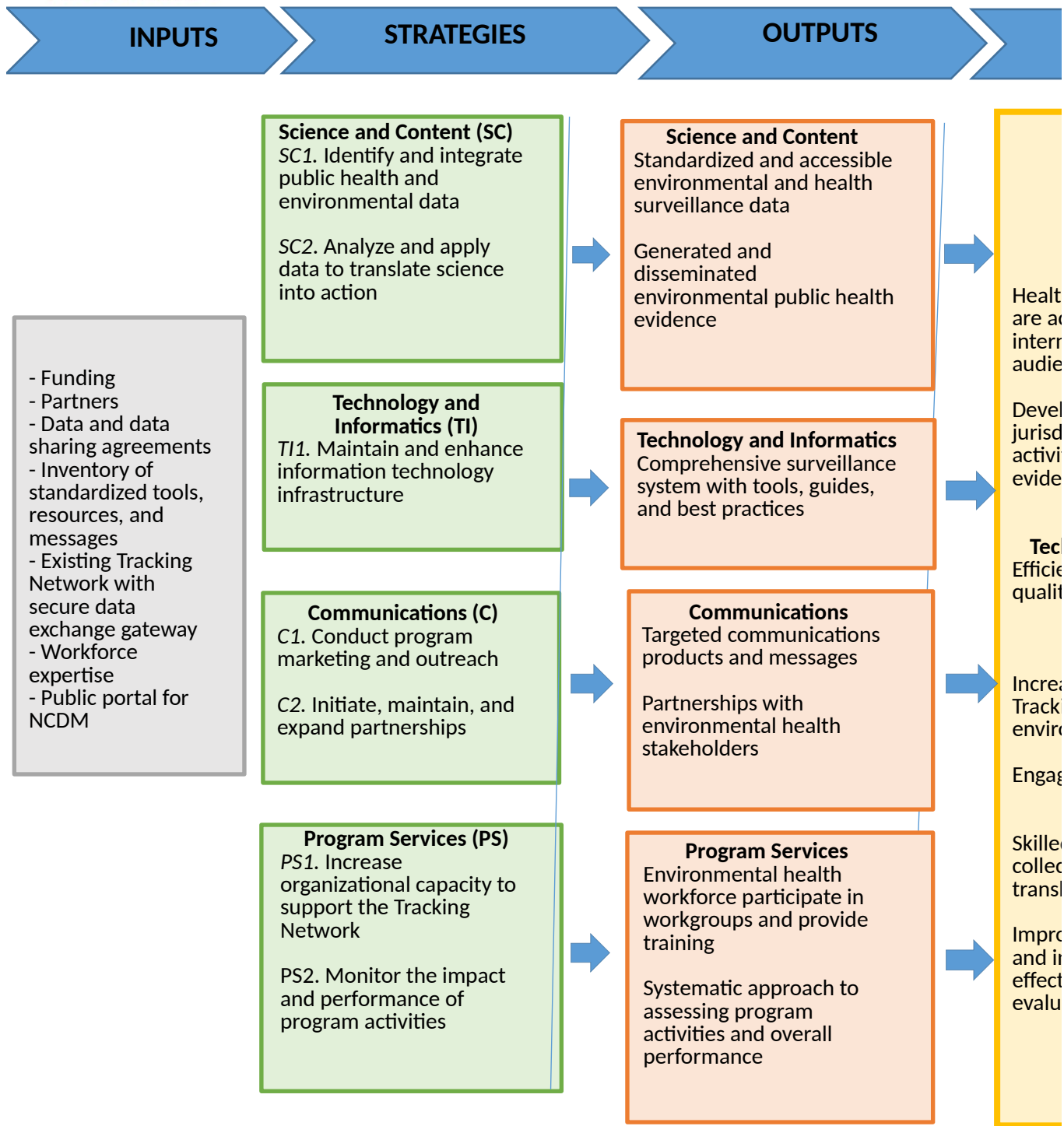
Form Approved
OMB No. 0920-1175
Exp. Date 04/30/2020

CDC estimates the average public reporting burden for this collection of information as 40 hours per response, including the time for reviewing instructions, searching existing data sources, gathering the data needed, and maintaining the data/information needed, and completing and reviewing the collection of information. An agency may not conduct or collect information unless it displays a currently valid OMB control number. Send comments regarding this burden estimate or any other aspect of this collection of information, including suggestions for reducing this burden to CDC/ATSDR Information Collection Review Office, 1600 Clifton Road NE, MS D-74, Atlanta, Georgia 30333; ATTN: PRA (0920-

viewing instructions, searching existing data/information sources, gathering
ct or sponsor, and a person is not required to respond to a collection of
ct of this collection of information, including suggestions for reducing this
0853).



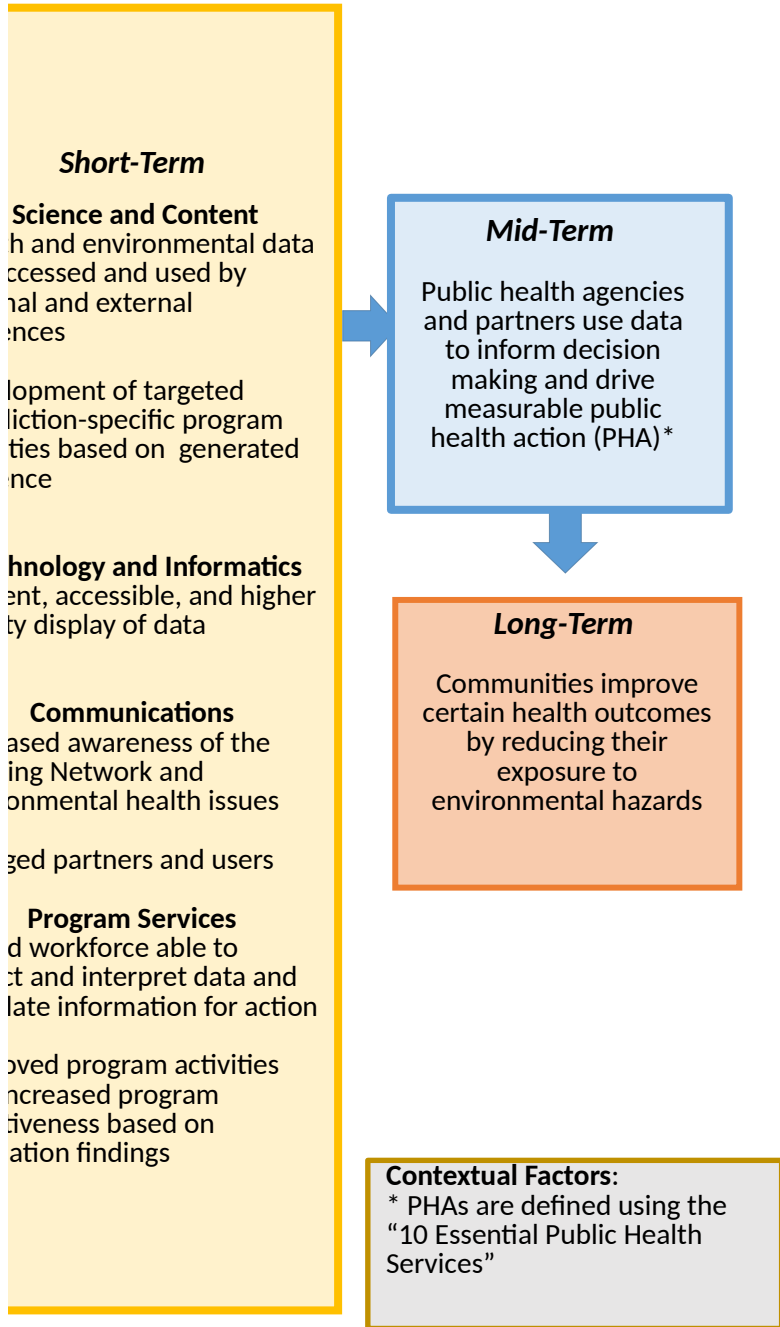
EH17-1702 Enhancing Innovation and Capa



Capabilities of the Environmental Public Health Tracking Network

EH17-1702 Logic Model

OUTCOMES





EH17-1702 Enhancing Innovation and Capabilities of the Environmental Public Health Tracking Network

Strategies and Activities

CDC-RFA-EH17-1702 Strategies and Activities

Activities in the EH17-1702 NOFO fall into four broad categories: *Science and Content*, *Technology and Informatics*, *Communications*, and *Program Services* and encompass several strategies. Ongoing activities in each strategy should be informed by work across the entire program and grantee's priorities. For example, Communications activities should be tailored to reflect activities in Science and Content. These activities should lead to the outputs listed in the logic model.

Recipients need to demonstrate that 100% of the core activities are in place by the end of Year 1. Recipients must maintain all core activities each year. Recipients must also select and implement at least two new advanced activities per year. All advanced activities must be implemented and maintained by the end of Year 5.

SCIENCE AND CONTENT	Science and Content Strategy I (SC1)	
	Identify and Integrate Public Health and Environmental Data	
	5 Core Activities	1 Advanced Activity
	SC1.A Identify and evaluate the strengths and limitations of health, exposure, environmental, and other data for the Network, in addition to work conducted as part of the Content Workgroup	SC1.F Address gaps or limitations in available data by collaborating with state and local programs to optimize data collection and ensure the inclusion of data elements relevant to environmental public health tracking; integrating novel or non-traditional data determined to be relevant and of sufficient quality (e.g., electronic health record data); conducting analyses and activities that either fills the identified data gap or extends the applicability of the available data; or expanding the availability and utility of sub-county data and measures
	SC1.B Integrate data into grantee's Tracking Network and ensure the availability and accessibility of data as appropriate for program staff and internal and external partners	
	SC1.C Maintain existing and newly adopted Nationally Consistent Data and Measures (NCDM) requirements including maintenance of NCDM data within the grantee tracking network, submission of NCDM data to CDC, and dissemination of required NCDM measures via grantee's Tracking Network https://www.cdc.gov/nceh/tracking/foa.htm	
	SC1.D Disseminate additional indicators and measures to address grantee's priorities, optional NCDMs or other agreed-upon standards	
	SC1.E Collaborate with CDC, data stewards, data users, and other tracking grantees to improve existing NCDMs and, adopt new and optional NCDMs as developed by the Content Workgroup	
	Science and Content Strategy II (SC2)	
	Analyze and Apply Data to Translate Science Into Action	
2 Core Activities	2 Advanced Activities	
SC2.A Conduct routine descriptive analysis of Tracking data to evaluate quality and completeness of data; to examine state and local environmental public health issues; or to generate information for other state and local programs, state and local decision makers, and the general public	SC2.C Conduct routine analyses using Tracking data for the discovery of spatial, temporal, and demographic patterns of diseases, exposures, or environmental hazards; the timely identification of unusual events signaling the need for further investigation; or the non-research purposes of analyzing or linking health, exposure, and hazard data to help provide new insights or solutions to environmental health issues	
SC2.B Use Tracking data to identify and prioritize the jurisdiction's environmental public health concerns and priorities, and need for action to help direct Tracking program activities including but not limited to those listed in this FOA		
	SC2.D Apply and interpret Tracking data to inform the development and evaluation of public health actions	

Create Work Plan

Work Plan Information

Year

Budget Year

Cooperative Agreement

CDC-RFA-EH17-1702

Recipient

Project Title	Select NOFO Strategy most applicable to this project	Provide a broad overview of this project
Example 1		
Example 2		
Example 3		
Example 4		
Example 5		
Example 6		
Example 7		
Example 8		
Example 9		
Example 10		
Example 11		

Select the project that is related to the activity	Create concise title describing the activity	Narrative: Provide specific details regarding how the activity will be accomplished	Select the EH topic most applicable to the activity
Example 1	Activity 1		
Example 1	Activity 2		
Example 2	Activity 1		

Select the Logic Model Activity most applicable to the activity	Select the targeted completion quarter	Select the activity's current status	Select the reason for the current status

Select the Logic Model output most applicable to this output	Select the output type most applicable to this output	If "Other," please explain	Provide detailed description of output	Provide the expected number or count	Provide the actual number or count

