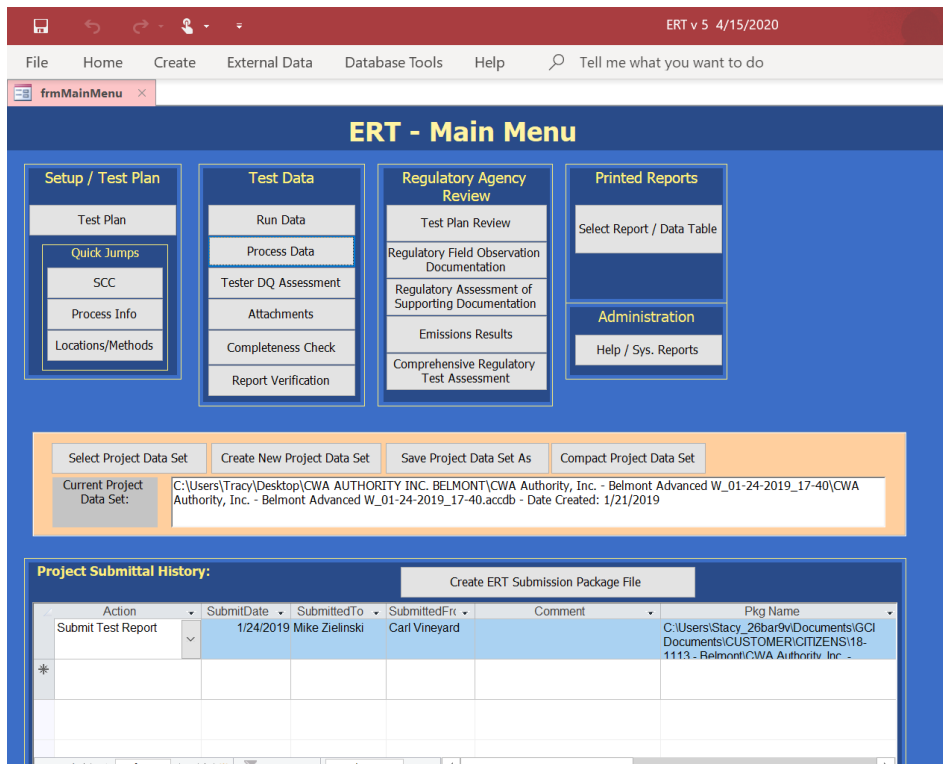


Supplementary Materials Electronic Reporting Tool - Data Entry

Section 60.4915(i)(2) requires that sources submit relative accuracy test audit data and performance test data (except opacity data) electronically to EPA's Central Data Exchange (CDX) by using the Electronic Reporting Tool (ERT) (<https://www.epa.gov/electronic-reporting-air-emissions/electronic-reporting-tool-ert>) or other compatible electronic spreadsheet. Only data collected using test methods compatible with ERT are subject to this requirement to be submitted electronically into EPA's WebFIRE database. This document provides screenshots of the data entry forms in EPA's ERT.



Supplementary Materials Electronic Reporting Tool - Data Entry

Test Plan

ERT Package Name: Test Plan Date: Open Expanded

Facility/Tester Permit/SCC Locations/Methods Regulations Process/APCD Methods cont. Audit/Calibrations Schedule Reviewers Attach.

Facility Name:

Address: **AFS Number:**

City: **Industry NAICS:** [Search on the Web](#)

State/Zip: IN 12345-6789 **FRS:** 999999999999 [Search on the Web](#)

County: Marion Co **State ID:**

Contact: **Latitude:**

Phone: (555) 555-5555 **Longitude:**

Fax:

email: Contact@email.com

Testing Company:

Address: **Testing Company Project Number:** 1234567

City:

State/Zip: OH 44090-

Contact:

Phone: (555) 555-5555 Attach Field documentation of competence as an AETB and QL for stationary source testing.

Fax:

email: contact@email.com

(* required fields)

Next Page

Test Plan

ERT Package Name: Test Plan Date: Open Expanded

Facility/Tester Permit/SCC Locations/Methods Regulations Process/APCD Methods cont. Audit/Calibrations Schedule Reviewers Attach.

Air Permit Number:

Permitted State Source ID/Name:

Permitted Maximum Process Rate:

Maximum Normal Operation Process Rate:

Target Process Rate for Testing:

Operational Hours Per Year:

Source Classification Code:

Select SCC from list

SCC/Desc.: 50200102

Target Parameter: Solid Waste Burned **Process Rate:** Tons/million BTU using

Pollutant Unit of Measure: Lb/million BTU using O2

Target Parameter Description (if needed):

(* required fields)

Previous Page Next Page

Supplementary Materials Electronic Reporting Tool - Data Entry

Test Plan

ERT Package * Test Plan Date: # Open Expanded

Facility/Tester Permit/SCC Locations/Methods Regulations Process/APCD Methods cont. Audit/Calibrations Schedule Reviewers Attach.

1. Please enter sampling location information. (all dimensions in inch)
(Required before test data entry)

Location (click to view/edit)	Inlet/Outlet	Total Travel	Ports	Round Duct Diam.	Duct Ler	Duct Wldt	Equivalent C	DownStream Dist	UpStream Distanc	Emissions are	Up Stream Pt. Loc. (M1A)
Sludge Incinerator #1	Outlet	0	0	35				0	0	<input type="checkbox"/>	0

(Note: UpStreamDist = Distance upstream from the disturbance (Distance A - Fig. 1-1, RM1); DwnStreamDist = Distance downstream from the disturbance (Distance B - Fig 1-1, RM1))

2a. Please provide the following information for each test paramete(Required before test data entry)

Location	Test Method	Target Parameter	Num Test Runs	Test Run Duration	Comments
Sludge Incinerator #1	Method 23	1,2,3,4,6,7,8-HpCDF	3	240	
Sludge Incinerator #1	Method 23	1,2,3,7,8-PeCDD	3	240	
Sludge Incinerator #1	Method 23	1,2,3,4,7,8-HxCDD	3	240	
Sludge Incinerator #1	Method 23	1,2,3,6,7,8-HxCDD	3	240	
Sludge Incinerator #1	Method 23	1,2,3,7,8,9-HxCDD	3	240	
Sludge Incinerator #1	Method 23	1,2,3,4,6,7,8-HpCDD	3	240	
Sludge Incinerator #1	Method 23	OCDD	3	240	
Sludge Incinerator #1	Method 23	2,3,7,8-TCDF	3	240	
Sludge Incinerator #1	Method 23	1,2,3,7,8-PeCDF	3	240	
Sludge Incinerator #1	Method 23	2,3,4,7,8-PeCDF	3	240	
Sludge Incinerator #1	Method 23	1,2,3,6,7,8-HxCDF	3	240	
Sludge Incinerator #1	Method 23	1,2,3,6,7,8-HxCDF	3	240	
Sludge Incinerator #1	Method 23	2,3,7,8-TCDF	3	240	
Sludge Incinerator #1	Method 23	1,2,3,7,8,9-HxCDF	3	240	

Record: 1 of 27

2b. Please select the Emissions Units of Measure for each location.

Locati	Method	Units of Measure	Corre	Corrected %	Process Rate, Parameter
Sludge In	Method 23	ng/dscm		0	
Sludge In	Method 23	ng/dscm corrected	O2	7	

Record: 1 of 2

Test Plan

ERT Package * Test Plan Date: # Open Expanded

Facility/Tester Permit/SCC Locations/Methods Regulations Process/APCD Methods cont. Audit/Calibrations Schedule Reviewers Attach.

3. What is the specific purpose, Data Quality Objectives and Data Quality Indicators for the proposed testir

Part 60 (NSPS) NSR/PSD
 Part 61 (NESHAP) Section 114
 Part 63 (MACT) State Rule
 Part 65 (MACT) Other (describe:)
 RATA

4. List all state and federal regulations that apply to the proposed testing:

Part-SubPart	Non Part 60/63 Rule Description (click to edit)	Compound	Unit of Measure	Limit
Part 60 Subpart	New Sewage Sludge Incineration Units	Total Dioxins	ng/dscm	0
Part 60 Subpart LLLL	New Sewage Sludge Incineration Units	Total Furans	ng/dscm	0

5. Will the test results be used for other regulatory purposes (e.g., emission inventories, permit applications, etc.) beyond that stated above? If yes, explain.

Supplementary Materials Electronic Reporting Tool - Data Entry

Test Plan

ERT Package Name: Test Plan Date: Open Expanded

Facility/Tester Permit/SCC Locations/Methods Regulations Process/APCD Methods cont. Audit/Calibrations Schedule Reviewers Attach.

6a. Enter the process data to be documented during testing (Required before test data entry) Add Process

Process Parameter: (click to view/edit)	Process Rate	Pollutant Unit	Measure	Time Unit	Material	Action	Target Low	Target High
Solid Waste Burned	Tons/million BTU us Lb	Tons	/million BTU using O	Solid Waste	Burned		0	

6b. Enter the process lab data to be documented during Add Lab

Analysis Required: (click to view/edit)	Units	Comments

7a. Please give a brief description of the source (including control equipment) and attach source or Attach File

7b. Control Devices: (Required before test data entry) Add Control Device

Location	Control Device: (click to view/edit)	Units	Target Value	Comments
Sludge Incinerat	INCINERATOR		0	

Column widths may be changed by user. Previous Page Next Page

Test Plan

ERT Package Name: Test Plan Date: Open Expanded

Facility/Tester Permit/SCC Locations/Methods Regulations Process/APCD Methods cont. Audit/Calibrations Schedule Reviewers Attach.

8. Describe below or attach complete documentation of any non standard test method used. Describe all modifications and/or deviations from published methods. Attach dated documentation of ALL non verbal request AND approval for modifications and/or alternative methods requests. Attach File

9. Does the proposed sampling location meet the minimum EPA Method 1 criteria for acceptable measurement sites? Please list below or attach the supporting documentation. Yes No Attach File

10. The absence of cyclonic flow must be verified by prior to testing {40CFR60.8 (h) or 40CFR63.7(d)(ii)}. An assessment of stratification of emission gases must also be performed {40CFR60.8 (h)}. Will you use EPA Method 1 and/or EPA Method 7E for these assessments? If not, explain how you will make the assessments and attach documentation supporting your assessment. Yes No Attach File

11. Select the method that will determine the oxygen concentration :

M3A-instrumental Previous Page Next Page

Supplementary Materials Electronic Reporting Tool - Data Entry

Test Plan

ERT Package Name: Test Plan Date: Open Expanded

Facility/Tester Permit/SCC Locations/Methods Regulations Process/APCD Methods cont. Audit/Calibrations Schedule Reviewers Attach.

12. Do any of the proposed test methods require analysis of EPA audit samples? If yes, you must contact an AASP to arrange for the purchase and delivery of Yes No

13. Has all testing equipment been calibrated within the past 12 months? If no, please explain. Yes No

14. Will all calibration gases be certified by EPA Traceability Protocol procedures? If No, describe certification procedure below. Yes No N/A

15. Is a dilution system (via EPA Method 205) proposed? Yes No N/A

16. If applicable, list the expected calibration gas concentrations for all proposed instrument test methods. Include as much information as is known at this time. [Attach Calibration Gas Certificates](#)

CylID	Compound/Analyte	CertProced	CertValu	UncertainPerc	CertDate	ExpDate
*			0	0		

Record: 1 of 1 No Filter Search

Previous Page Next Page

Test Plan

ERT Package Name: Test Plan Date: Open Expanded

Facility/Tester Permit/SCC Locations/Methods Regulations Process/APCD Methods cont. Audit/Calibrations Schedule Reviewers Attach.

17. What is the proposed test schedule?
December 4 & 5, 2018

18. Additional comments:
Environmental conditions did not adversely affect the test results

19. Required Personal Protection Equipment:
Hard hats, safety glasses, boots and long sleeve shirts

Previous Page Next Page

Supplementary Materials Electronic Reporting Tool - Data Entry

Test Plan

ERT Package Name: Test Plan Date: Open Expanded

Facility/Tester Permit/SCC Locations/Methods Regulations Process/APCD Methods cont. Audit/Calibrations Schedule Reviewers Attach.

Permitted Facility Representative

Name:

Email:

Title:

Company:

Date Reviewed:

Testing Company Representative

Name:

Email:

Title:

Company:

Date Reviewed:

Previous Page Next Page

Test Plan

ERT Package Name: Test Plan Date: Open Expanded

Facility/Tester Permit/SCC Locations/Methods Regulations Process/APCD Methods cont. Audit/Calibrations Schedule Reviewers Attach.

AttachDesc	
Source/Process Flow Diagram	0
Alternate Method Request and Approval (Item 8) (optional)	0
EPA Method 1/Location Supporting Documentation (Item 9) (option	0
Cyclonic Flow Absence Supporting Documentation (Item 10)	0
Pre-Test Meter Boxes/DGMs Calibrations	1
Post-Test Meter Boxes/DGMs Calibrations	0
Nozzles Calibrations	1
Pitots Calibrations	1
Thermocouples Calibrations	0
Sampling Locations Dimensions and Point Locations	0
Run Field Data Sheets (raw data sheets for field sampling)	1
Moisture Recovery	0
Lab Data (raw data sheets for field and laboratory analysis)	1
Chain-of-Custody	0
Observer Comments	0
Documentation of competence as an AETB and QI for stationary so	3
Laboratory Accreditation Certification	0

Record: 14 1 of 33 No Filter Search

To add or view an attachment:

- double click on the "paper clip" symbol
- select "add" to add a file
- select "view" to view a file

Note: Effective October 31, 2016 according to 60.8(f)(v) "Where test methods requires you record or report, the following shall be included: Record of preparation of standards, record of

To add more attachment items, enter the description of the attachment in the bottom row of the attachdesc column. Then add your attachment.

Tips to reduce the PDF file size:

- Create PDF directly from application,
- Attach individual components not compiled material
- Use descriptive file names (i.e. M29-field-data_11-11-11.pdf)
- Attach compressed image files (JPG, GIF, PNG) or CGM
- Scan paper documents at 200 dpi

Previous Page Finished

Supplementary Materials
Electronic Reporting Tool - Data Entry

Run Data Details

Facility: Open Expanded

Permitted Source ID/Description:

Select Location - Method: Add New Run Data Delete Run Data

Select Run: Change Run Number Change Run Date

Method Setup | Header Data | Point Data | Lab Data | Sampling/Stack Data Results | Cyclone Cut Size | Emissions

Compounds for this Location / Method: View / Edit Location Information

Location	Test Method	Target Parameter	Num Test Runs	Test Run Duration	C
Sludge Incinerator #1	Method 23	1,2,3,4,6,7,8-HpCDF	3	240	
Sludge Incinerator #1	Method 23	1,2,3,7,8-PeCDD	3	240	
Sludge Incinerator #1	Method 23	1,2,3,4,7,8-HxCDD	3	240	
Sludge Incinerator #1	Method 23	1,2,3,6,7,8-HxCDD	3	240	
Sludge Incinerator #1	Method 23	1,2,3,7,8,9-HxCDD	3	240	
Sludge Incinerator #1	Method 23	1,2,3,4,6,7,8-HpCDD	3	240	
Sludge Incinerator #1	Method 23	OCDD	3	240	
Sludge Incinerator #1	Method 23	2,3,7,8-TCDF	3	240	
Sludge Incinerator #1	Method 23	1,2,3,7,8-PeCDF	3	240	
Sludge Incinerator #1	Method 23	2,3,4,7,8-PeCDF	3	240	
Sludge Incinerator #1	Method 23	1,2,3,4,7,8-HxCDF	3	240	
Sludge Incinerator #1	Method 23	1,2,3,6,7,8-HxCDF	3	240	
Sludge Incinerator #1	Method 23	2,3,7,8-TCDD	3	240	

Record: 1 of 27 No Filter Search

Add Target Parameters

Emissions / Concentrations for this Location / Method:

Locati	Method	Units of Measure	Corre	Corrected %	Process Rate, Parameter
Sludge In	Method 23	ng/dscm		0	
Sludge In	Method 23	ng/dscm corrected	O2	7	

Record: 1 of 2 No Filter Search

Add Emissions/Concentrations

Supplementary Materials
Electronic Reporting Tool - Data Entry

ERT v 5 4/15/2020

File Home Create External Data Database Tools Help Tell me what you want to do

frmMainMenu

Process Data Details

Facility:

Permitted Source ID/Description:

Attach Process and APCD Monitor Calibrations Open Expanded

Process Run Data APCD Run Data Lab Data

Run: Add A Run Delete This Run (Note: The first row cannot be deleted. This Process is from the SCC selected in the Test Plan)

Enter the Process Value(s) and any Comments below, go to Test Plan to change other fields:

Name	Value	Process Rate	Target Lo	Target Hig	comments
Solid Waste Burned	0	/million BTU using	0	0	
*					

Select next Run: 1 of 1 No Filter Search

Test Quality Questions

Quality Assessment Questions Open Expanded

Completeness

Note: Effective October 31, 2016 according to 60.8(f)(v) "Where test methods requires you record or report, the following shall be included: Record of preparation of standards, record of calibrations, raw data sheets for field sampling, raw data sheets for field and laboratory analysis, chain-of-custody documentation, and example calculations for reported results."

Note: ERT will answer the salmon colored Completeness questions with a "Yes" or "No" based on the response is provided in the applicable area or a file is attached in the applicable line. Clicking in the "Click to Show ERT Data" column will show the applicable area or attachment. Selecting the "Update Completeness Answers" button will refresh the answers based on any new content entered into ERT. The Completeness answers can only be changed by entering data into the applicable area or adding attachments. Only the Source or Testing Company can add or edit data in the Project Data Set.

Update Completeness Answers

Include Completeness Questions

Question	Answer	Comment	Click to Show
As described in ASTM D7036-12 Standard Practice for Competence of Air Emission Testing Bodies, does the testing firm meet the criteria as an AETB or is the person in charge of the field team a QI for the type of testing conducted? A certificate from an independent organization (e.g., Stack Testing Accreditation Council (STAC), California Air Resources Board (CARB), National Environmental Laboratory Accreditation Program (NELAP) or self	Yes		Review certificate
Is a description and drawing of test location provided?	Yes		(Test Plan Item 1. Attachment) - Rev dimensions and d
Has a description of deviations from published test methods been provided, or is there a statement that deviations were not required to obtain data representative of typical facility operation?	No		(Test Plan Item 8. Attachment) - Rev method documen
Is a full description of the process and the unit being tested (including installed controls) provided?	No		(Test Plan Item 7. Attachment) - Rev documentation.