

# Atlantic Large Whale Take Reduction Plan

## Supplements

A. Exempted Areas

B. Weak Links &  
Anchoring Techniques

C. Gear Marking



**NOAA**  
**FISHERIES**

# Contact Us For More Information

## NOAA Fisheries Greater Atlantic Regional Office

Protected Resources Division  
Large Whale Take Reduction Coordinator  
55 Great Republic Drive  
Gloucester, MA 01930  
978-281-9328

## NOAA Fisheries Greater Atlantic Gear Team

Northeast Fisheries Liaison  
John Higgins  
(207) 677-2316  
John.Higgins@noaa.gov

**Or Visit the Atlantic Large Whale Take  
Reduction Website**

[www.greateratlantic.fisheries.noaa.gov/whaletrp/](http://www.greateratlantic.fisheries.noaa.gov/whaletrp/)

# CONTENTS

**Supplement A. Exempted Areas 1**

**Supplement B. Weak Links and Anchoring Techniques 13**

**Supplement C. Gear Marking Techniques 20**



**NOAA  
FISHERIES**

# Atlantic Large Whale Take Reduction Plan

## Exempted Waters

Atlantic Large Whale Take Reduction Plan (Plan) regulations apply to all U.S. waters in the Atlantic, with the exceptions of the following areas described in the following sections.

### Gear Modification Exemptions >280 fathoms:

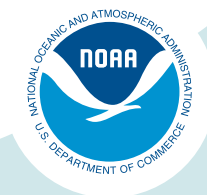
- Fisheries are exempt from the requirement to have sinking groundlines if their groundline is at a depth equal to or greater than 280 fathoms (1,680 ft; 512.1m).
- Anchored gillnet fisheries are exempt from the requirement to install weak links in net panel(s) and to anchor each end of the net string if the float line is at a depth equal to or greater than 280 fathoms (1,680 ft; 512.1m).

### Minimum Trap Per Trawl Exemptions

- **Rhode Island state waters, New Hampshire state waters, and and portions of Massachusetts state waters** are exempt from the minimum trap per trawl requirements but must adhere to other Plan requirements. Single traps, in some areas, must comply with additional gear marking regulations.
- **Waters within 1/4 mile of Monhegan Island, Maine; Matinicus Island group, Maine; and Ragged Island, Maine and Isle of Shoals group, Maine** are exempt from the new minimum trap per trawl requirements but must adhere to other Plan requirements. Single traps, in some areas, must comply with additional gear marking regulations.

*For more detailed information, see information starting on page 8.*

*These areas are required to meet other Plan regulations.*



# Full Plan Exemptions

## Plan Regulations Do Not Apply To The Following Exempted Waters

Exempted Area	Boundaries
COLREGS waters, Maine through Florida, with the following <u>exceptions</u> :	<p>Waters landward of the 72 COLREGS lines from Maine through Florida are exempt from Plan requirements with certain exceptions. The following COLREGS areas are NOT EXEMPT from ALWTRP regulations:</p> <ul style="list-style-type: none"> <li>• Casco Bay (Maine),</li> <li>• Portsmouth Harbor (New Hampshire),</li> <li>• Gardiners Bay and Long Island Sound (New York), and</li> <li>• Massachusetts state waters</li> </ul>
Exempted waters of Massachusetts include:	<ul style="list-style-type: none"> <li>• Waters landward of the first bridge over any embayment, harbor, or inlet</li> </ul>
Exempted waters of New Hampshire include those landward of the following line:	<ul style="list-style-type: none"> <li>• A line from 42°53.691' N. lat., 70°48.516' W. long. to 42°53.516' N. lat., 70°48.748' W. long. (Hampton Harbor).</li> <li>• A line from 42°59.986' N. lat., 70°44.654' W. long. to 42°59.956' N., 70°44.737' W. long. (Rye Harbor).</li> </ul>
Exempted waters of Rhode Island include those landward of the following line:	<ul style="list-style-type: none"> <li>• A line from 41°22.441' N. lat., 71°30.781' W. long. to 41°22.447' N lat., 71°30.893' W. long. (Pt. Judith Pond Inlet).</li> <li>• A line from 41°21.310' N. lat., 71°38.300' W. long. to 41°21.300' N. lat., 71°38.330' W. long. (Ninigret Pond Inlet).</li> <li>• A line from 41°19.875' N. lat., 71°43.061' W. long. to 41°19.879' N. lat., 71°43.115' W. long. (Quonochontaug Pond Inlet).</li> <li>• A line from 41°19.660' N. lat., 71°45.750' W. long. to 41°19.660' N. lat., 71°45.780' W. long. (Weekapaug Pond Inlet).</li> </ul>
Exempted waters of New York include those landward of the following line:	<ul style="list-style-type: none"> <li>• A line that follows the territorial sea baseline through Block Island Sound (Watch Hill Point, RI, to Montauk Point, NY).</li> </ul>
Exempted waters of South Carolina include those landward of the following line:	<ul style="list-style-type: none"> <li>• A line from 32°34.717' N. lat., 80°08.565' W. long. to 32°34.686' N. lat., 80°08.642' W. long. (Captain Sams Inlet).</li> </ul>

# Full Plan Exemptions

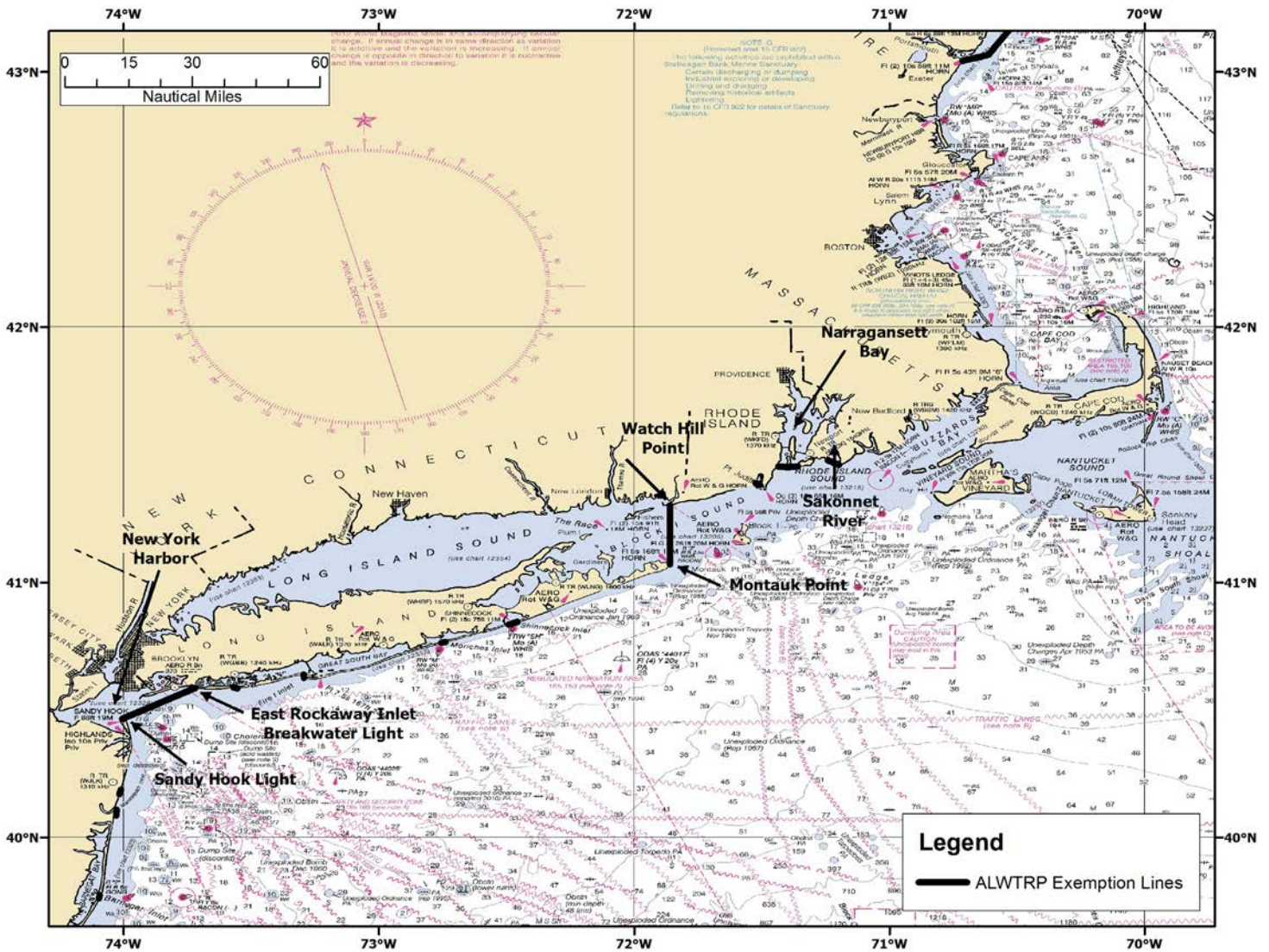
## Regulations Do Not Apply To The Following Exempted Waters

Exempted Area	Boundaries		
<p>Exempted waters of Maine include:</p>	<p>Exempted areas are those landward of a line which connects the points below:</p> <table border="1" data-bbox="423 583 1555 1633"> <tr> <td data-bbox="423 583 964 1633"> <ol style="list-style-type: none"> <li>1. Odiornes Pt. Portsmouth NH: 43° 02.55' N 70°43.33' W</li> <li>2. R 2KR Whistle – Kittery Point: 43°02.93' N 70°41.47' W</li> <li>3. N 2MR – Murray Rock: 43°04.06' N, 70°36.70' W</li> <li>4. RW CP Whistle – Cape Porpoise: 43°20.23' N 70°23.64' W</li> <li>5. RW WI Whistle – Wood: 43°27.63' N 70°17.48' W</li> <li>6. G 1 – East Hue and Cry: 43°31.94' N 70°08.68' W</li> <li>7. RG N BS – Bulwark Shoal: 43°36.04' N 70°03.98' W</li> <li>8. R 20ML Bell - Mile Ledge: 43°41.44' N 69°45.27' W</li> <li>9. R 2BR Bell – Bantam Rock: 43°43.64' N 69°37.58' W</li> <li>10. GR C PL – Pemaquid Ledge: 43°48.96' N 69°31.15' W</li> <li>11. R 2 OM Whistle – Old Man Ledge: 43°50.28' N 69°18.86' 44°25.74' N 67° 38.39' W</li> <li>12. G 5TB Bell – Two Bush Channel: 43°56.72' N 69°04.89' W</li> <li>13. R 2A Bell – Old Horse Ledge: 43°59.83' N 68°50.06' W</li> </ol> </td> <td data-bbox="964 583 1555 1633"> <ol style="list-style-type: none"> <li>14. R 2 Bell – Roaring Bull Ledge, Isle Au Haut: 43°59.36' N 68°37.95' W</li> <li>15. Southern point Great Duck I: 44°08.36' N 68°14.75' W</li> <li>16. R 8BI Whistle – Baker I: 44°13.55' N 68°10.71' W</li> <li>17. R 2S Bell – Schoodic I: 44°19.08' N 68° 02.05' W</li> <li>18. R N 2 – Petit Manan I: 44°21.66' N 67°51.78' W</li> <li>19. R 2SR Bell – Seahorse Rock, west of Great Wass I Freeman Rock – east of Great Wass I: 44°27.77' N 67°32.86' W</li> <li>20. Obstruction – southeast of Cutler: 44°37.70' N 67°09.75' W</li> <li>21. R 28M Whistle – Baileys Mistake: 44°45.51' N 67°02.87' W</li> <li>22. R N 2 – Morton Ledge: 44°47.36' N 66°59.25' W</li> <li>23. G 1 Whistle – West Quoddy Head: 44°48.64' N 66°56.43' W</li> <li>24. R N 2 – Quoddy Narrows: 44°49.67' N 66°57.77' W</li> </ol> </td> </tr> </table>	<ol style="list-style-type: none"> <li>1. Odiornes Pt. Portsmouth NH: 43° 02.55' N 70°43.33' W</li> <li>2. R 2KR Whistle – Kittery Point: 43°02.93' N 70°41.47' W</li> <li>3. N 2MR – Murray Rock: 43°04.06' N, 70°36.70' W</li> <li>4. RW CP Whistle – Cape Porpoise: 43°20.23' N 70°23.64' W</li> <li>5. RW WI Whistle – Wood: 43°27.63' N 70°17.48' W</li> <li>6. G 1 – East Hue and Cry: 43°31.94' N 70°08.68' W</li> <li>7. RG N BS – Bulwark Shoal: 43°36.04' N 70°03.98' W</li> <li>8. R 20ML Bell - Mile Ledge: 43°41.44' N 69°45.27' W</li> <li>9. R 2BR Bell – Bantam Rock: 43°43.64' N 69°37.58' W</li> <li>10. GR C PL – Pemaquid Ledge: 43°48.96' N 69°31.15' W</li> <li>11. R 2 OM Whistle – Old Man Ledge: 43°50.28' N 69°18.86' 44°25.74' N 67° 38.39' W</li> <li>12. G 5TB Bell – Two Bush Channel: 43°56.72' N 69°04.89' W</li> <li>13. R 2A Bell – Old Horse Ledge: 43°59.83' N 68°50.06' W</li> </ol>	<ol style="list-style-type: none"> <li>14. R 2 Bell – Roaring Bull Ledge, Isle Au Haut: 43°59.36' N 68°37.95' W</li> <li>15. Southern point Great Duck I: 44°08.36' N 68°14.75' W</li> <li>16. R 8BI Whistle – Baker I: 44°13.55' N 68°10.71' W</li> <li>17. R 2S Bell – Schoodic I: 44°19.08' N 68° 02.05' W</li> <li>18. R N 2 – Petit Manan I: 44°21.66' N 67°51.78' W</li> <li>19. R 2SR Bell – Seahorse Rock, west of Great Wass I Freeman Rock – east of Great Wass I: 44°27.77' N 67°32.86' W</li> <li>20. Obstruction – southeast of Cutler: 44°37.70' N 67°09.75' W</li> <li>21. R 28M Whistle – Baileys Mistake: 44°45.51' N 67°02.87' W</li> <li>22. R N 2 – Morton Ledge: 44°47.36' N 66°59.25' W</li> <li>23. G 1 Whistle – West Quoddy Head: 44°48.64' N 66°56.43' W</li> <li>24. R N 2 – Quoddy Narrows: 44°49.67' N 66°57.77' W</li> </ol>
<ol style="list-style-type: none"> <li>1. Odiornes Pt. Portsmouth NH: 43° 02.55' N 70°43.33' W</li> <li>2. R 2KR Whistle – Kittery Point: 43°02.93' N 70°41.47' W</li> <li>3. N 2MR – Murray Rock: 43°04.06' N, 70°36.70' W</li> <li>4. RW CP Whistle – Cape Porpoise: 43°20.23' N 70°23.64' W</li> <li>5. RW WI Whistle – Wood: 43°27.63' N 70°17.48' W</li> <li>6. G 1 – East Hue and Cry: 43°31.94' N 70°08.68' W</li> <li>7. RG N BS – Bulwark Shoal: 43°36.04' N 70°03.98' W</li> <li>8. R 20ML Bell - Mile Ledge: 43°41.44' N 69°45.27' W</li> <li>9. R 2BR Bell – Bantam Rock: 43°43.64' N 69°37.58' W</li> <li>10. GR C PL – Pemaquid Ledge: 43°48.96' N 69°31.15' W</li> <li>11. R 2 OM Whistle – Old Man Ledge: 43°50.28' N 69°18.86' 44°25.74' N 67° 38.39' W</li> <li>12. G 5TB Bell – Two Bush Channel: 43°56.72' N 69°04.89' W</li> <li>13. R 2A Bell – Old Horse Ledge: 43°59.83' N 68°50.06' W</li> </ol>	<ol style="list-style-type: none"> <li>14. R 2 Bell – Roaring Bull Ledge, Isle Au Haut: 43°59.36' N 68°37.95' W</li> <li>15. Southern point Great Duck I: 44°08.36' N 68°14.75' W</li> <li>16. R 8BI Whistle – Baker I: 44°13.55' N 68°10.71' W</li> <li>17. R 2S Bell – Schoodic I: 44°19.08' N 68° 02.05' W</li> <li>18. R N 2 – Petit Manan I: 44°21.66' N 67°51.78' W</li> <li>19. R 2SR Bell – Seahorse Rock, west of Great Wass I Freeman Rock – east of Great Wass I: 44°27.77' N 67°32.86' W</li> <li>20. Obstruction – southeast of Cutler: 44°37.70' N 67°09.75' W</li> <li>21. R 28M Whistle – Baileys Mistake: 44°45.51' N 67°02.87' W</li> <li>22. R N 2 – Morton Ledge: 44°47.36' N 66°59.25' W</li> <li>23. G 1 Whistle – West Quoddy Head: 44°48.64' N 66°56.43' W</li> <li>24. R N 2 – Quoddy Narrows: 44°49.67' N 66°57.77' W</li> </ol>		
<p>Exempted waters of Maryland/ Virginia: Chesapeake Bay</p>	<ul style="list-style-type: none"> <li>• Waters landward of a line drawn from Cape Charles Light to Cape Henry Light.</li> </ul>		
<p>Exempted waters of Delaware: Delaware Bay</p>	<ul style="list-style-type: none"> <li>• Waters landward of a line drawn from Cape May Light to Cape Henlopen.</li> </ul>		



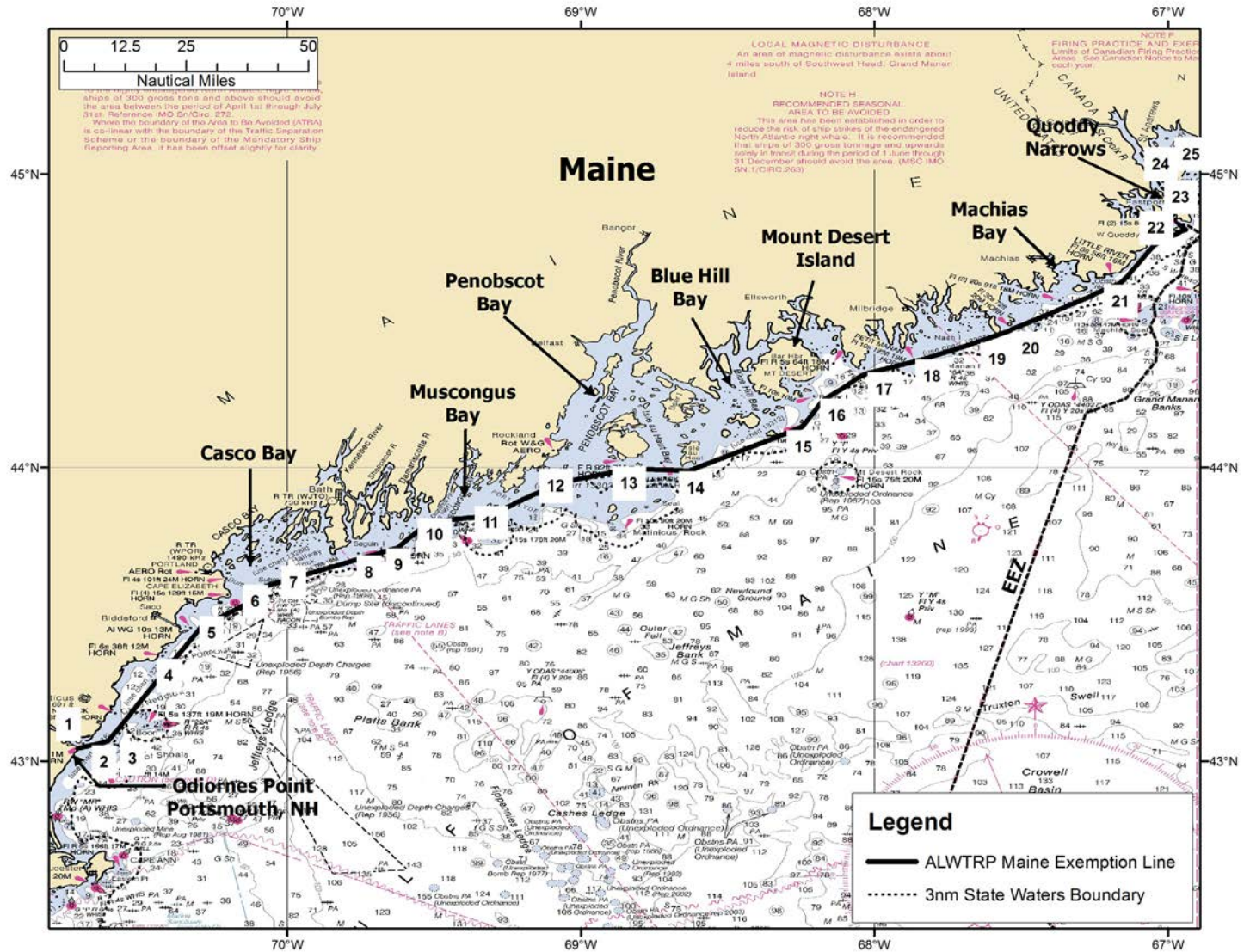
# Full Plan Exemptions Full Plan Exemptions

## Exemption Lines for Coastal Waters of RI, CT, and NY



# Full Plan Exemptions

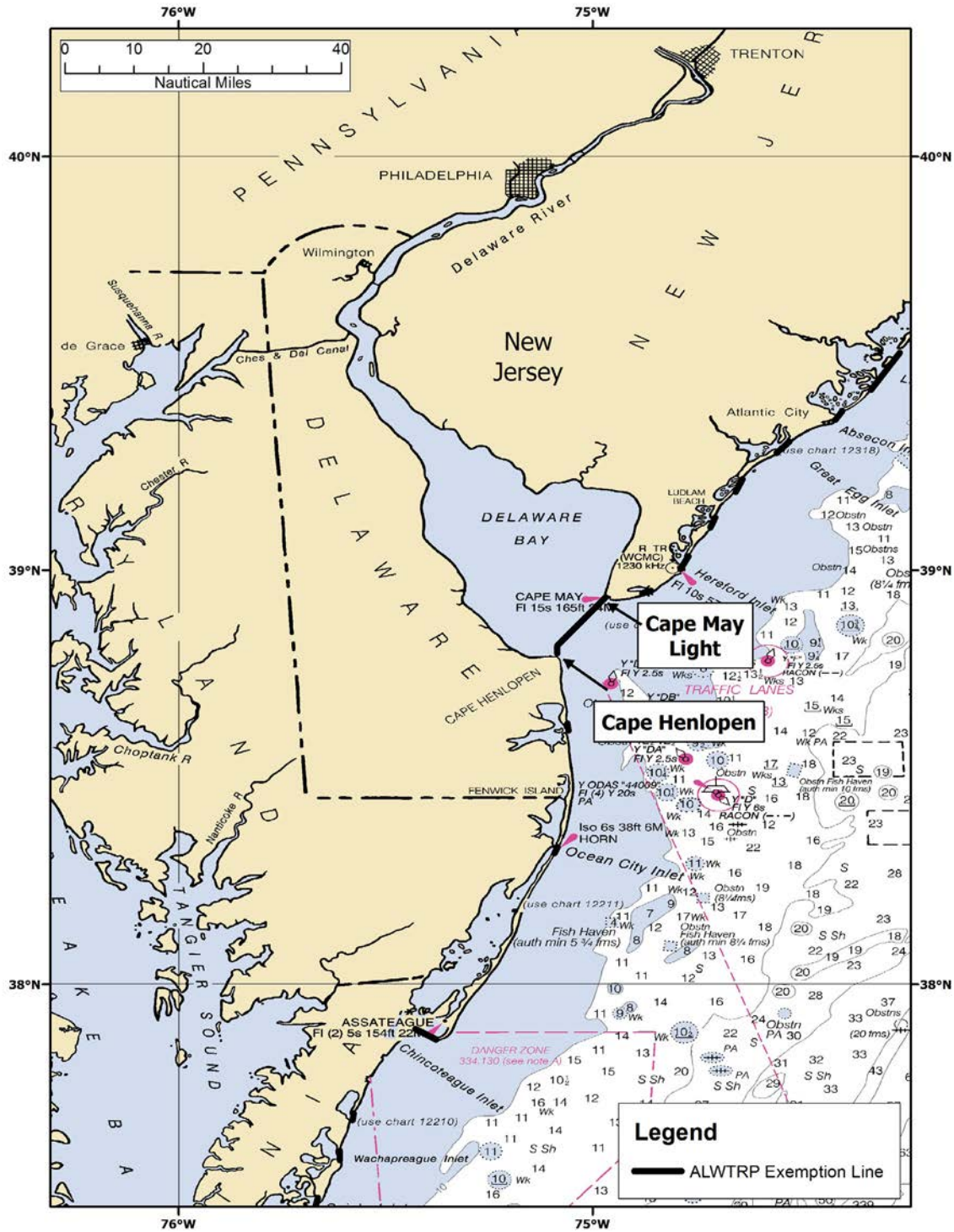
## Exemption Lines for Coastal Waters of Maine





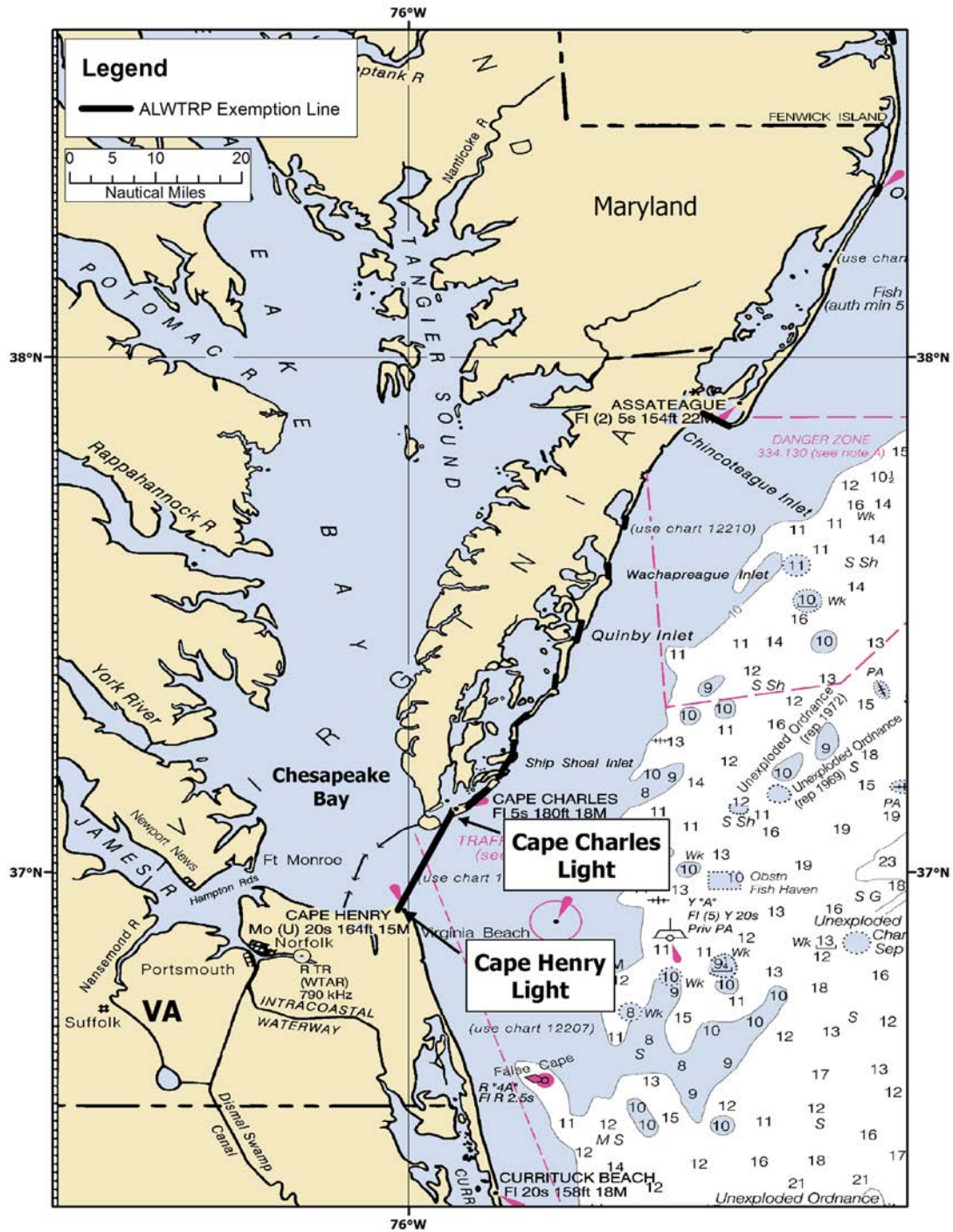
# Full Plan Exemptions

## Exemption Lines for Delaware Bay



# Full Plan Exemptions

## Exemption Lines for Chesapeake Bay



# Min. Trap/Trawl Exemptions

Please note: while these areas may be exempt from certain minimum trap per trawl requirements, they are still subject to other Plan requirements. See your regional Plan guide for specific area requirements.

## MAINE

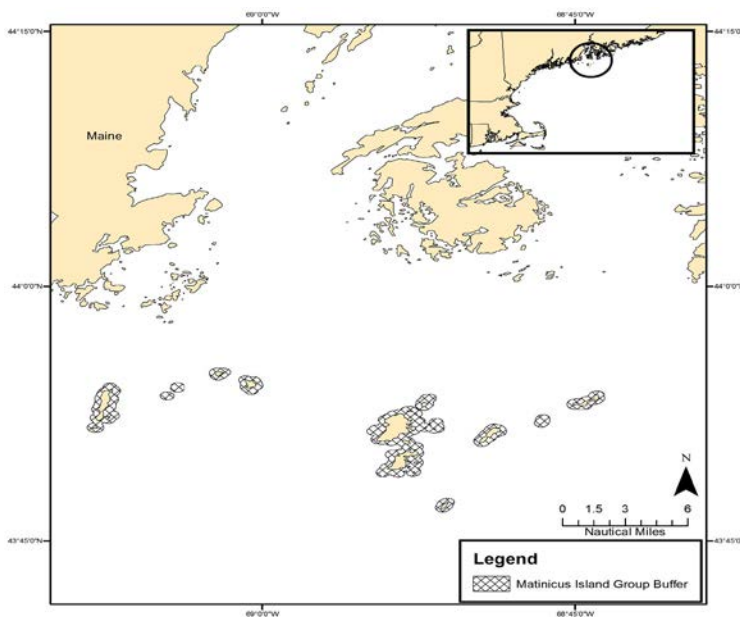
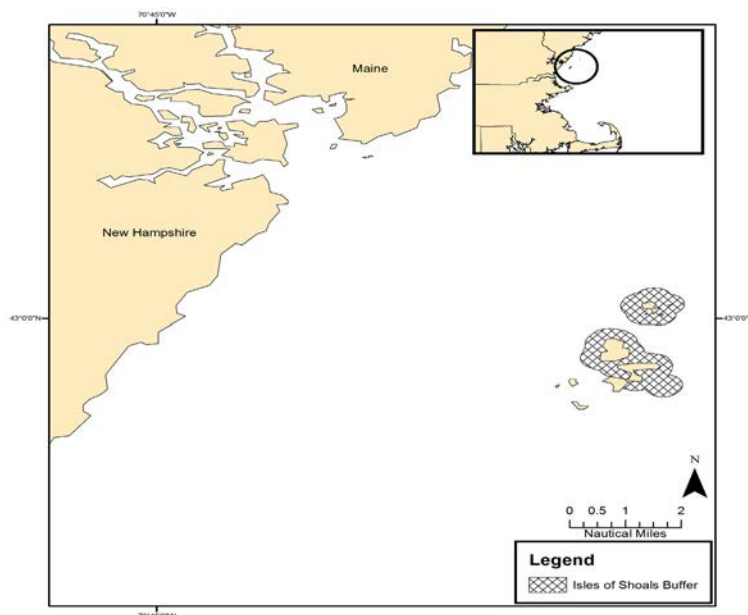
### MIN. TRAP/TRAWL EXEMPTED AREAS

Waters within 1/4 mile the following islands in Maine:

- Monhegan Island
- Matinicus Island
- Ragged Island
- Matinicus Island group--Metinic, Small Green, Large Green, Seal, and Wooden Ball; and
- Isle of Shoals group--Duck, Appledore, Cedar, and Smuttynose

Minimum trap per trawl exempted areas are also required to have area specific gear marking colors for single traps:

Isle of Shoals single traps-- RED & ORANGE





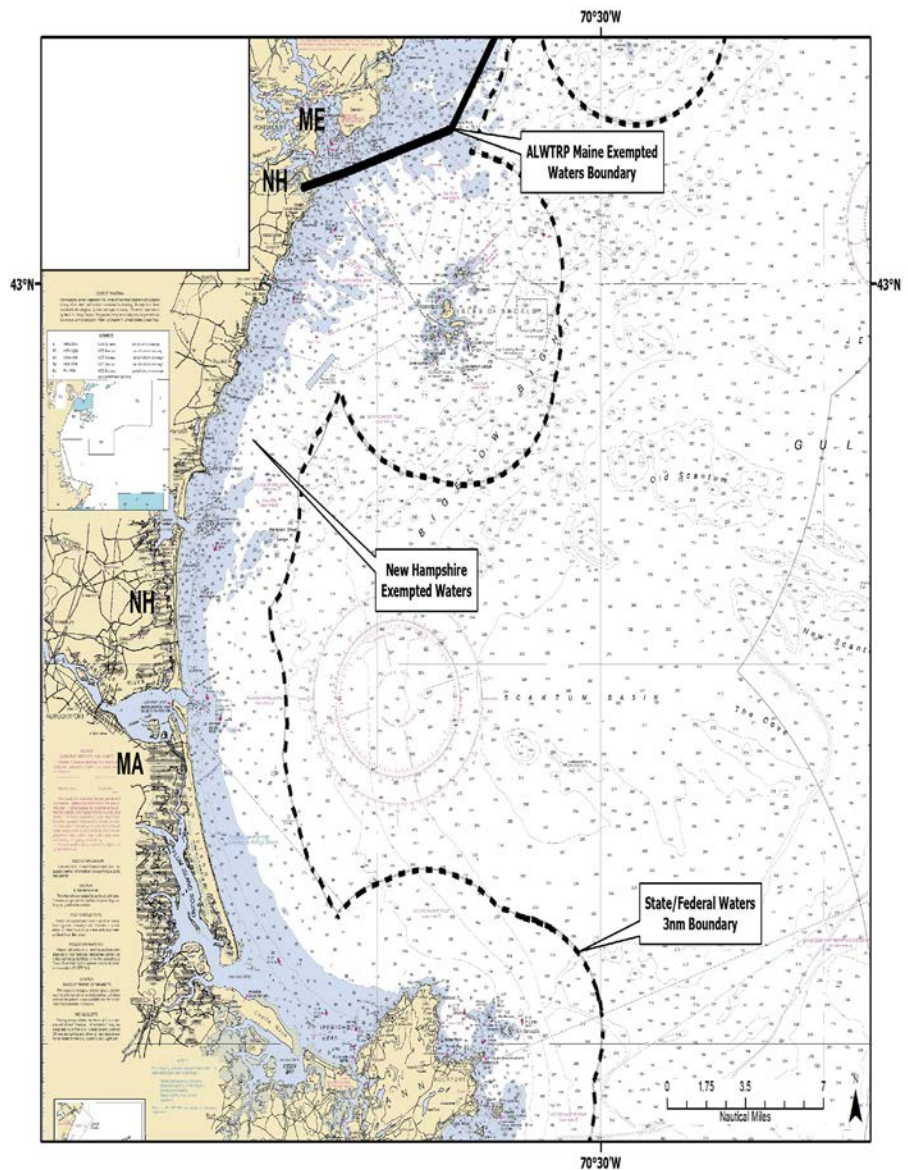
# Min. Trap/Trawl Exemptions

## NEW HAMPSHIRE

ALL New Hampshire state waters are exempt from the Plan's Minimum Trap Per Trawl Requirements.

### MIN. TRAP/TRAWL EXEMPTED AREAS

- All New Hampshire state waters



Please note: while these areas may be exempt from certain minimum trap per trawl requirements, they are still subject to other Plan requirements. See your regional Plan guide for specific area requirements.



# Min. Trap/Trawl Exemptions

## MASSACHUSETTS

The following Massachusetts state waters are exempt from **ONLY** the Plan's Minimum Trap Per Trawl Requirements.

### MIN. TRAP/TRAWL EXEMPTED AREAS

From the New Hampshire border to 70°W longitude south of Cape Cod, waters in EEZ Nearshore Management Area 1 and the Outer Cape Lobster Management Area (as defined in the American Lobster Fishery regulations under § 697.18), from the shoreline to 3 nautical miles from shore, and including waters of Cape Cod Bay southeast of a straight line connecting 41°55.8'N lat., 70°8.4'W long. and 41°47.2'N lat., 70°19.5'W long.

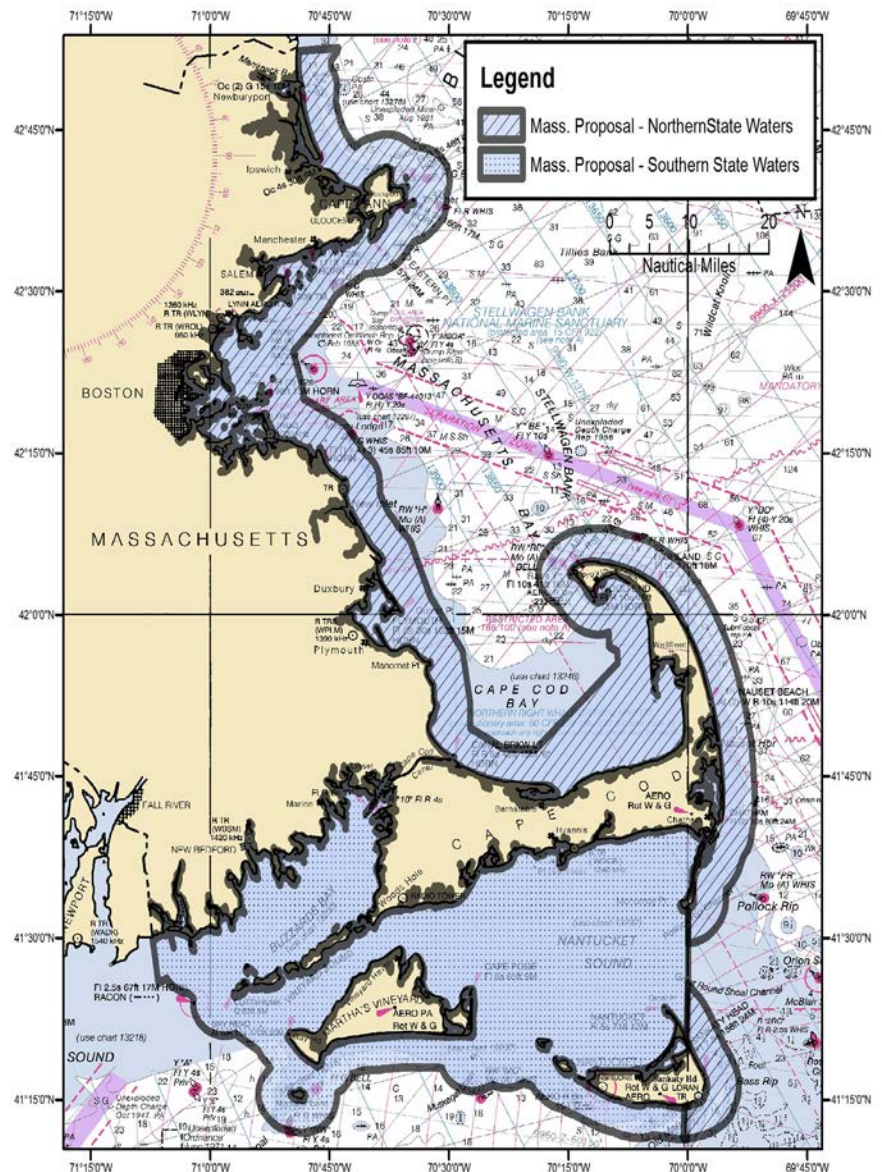
From 70°W longitude south of Cape Cod to the Rhode Island border, all Massachusetts state waters in EEZ Nearshore Management Area 2 and the Outer Cape Lobster Management Area (as defined in the American Lobster Fishery regulations under §697.18), including federal waters of Nantucket Sound west of 70°W longitude.

The following minimum trap per trawl exempted areas are also required to have area specific gear marking colors for single traps:

Single traps in exempt MA state waters in LMA 1-- RED & WHITE

Single traps in exempt MA state waters in LMA 2-- RED & BLACK

Single traps in exempt MA state waters in Outer Cape-- RED & YELLOW



Please note: while these areas may be exempt from certain minimum trap per trawl requirements, they are still subject to other Plan requirements. See your regional Plan guide for specific area requirements.

# Min. Trap/Trawl Exemptions

## RHODE ISLAND

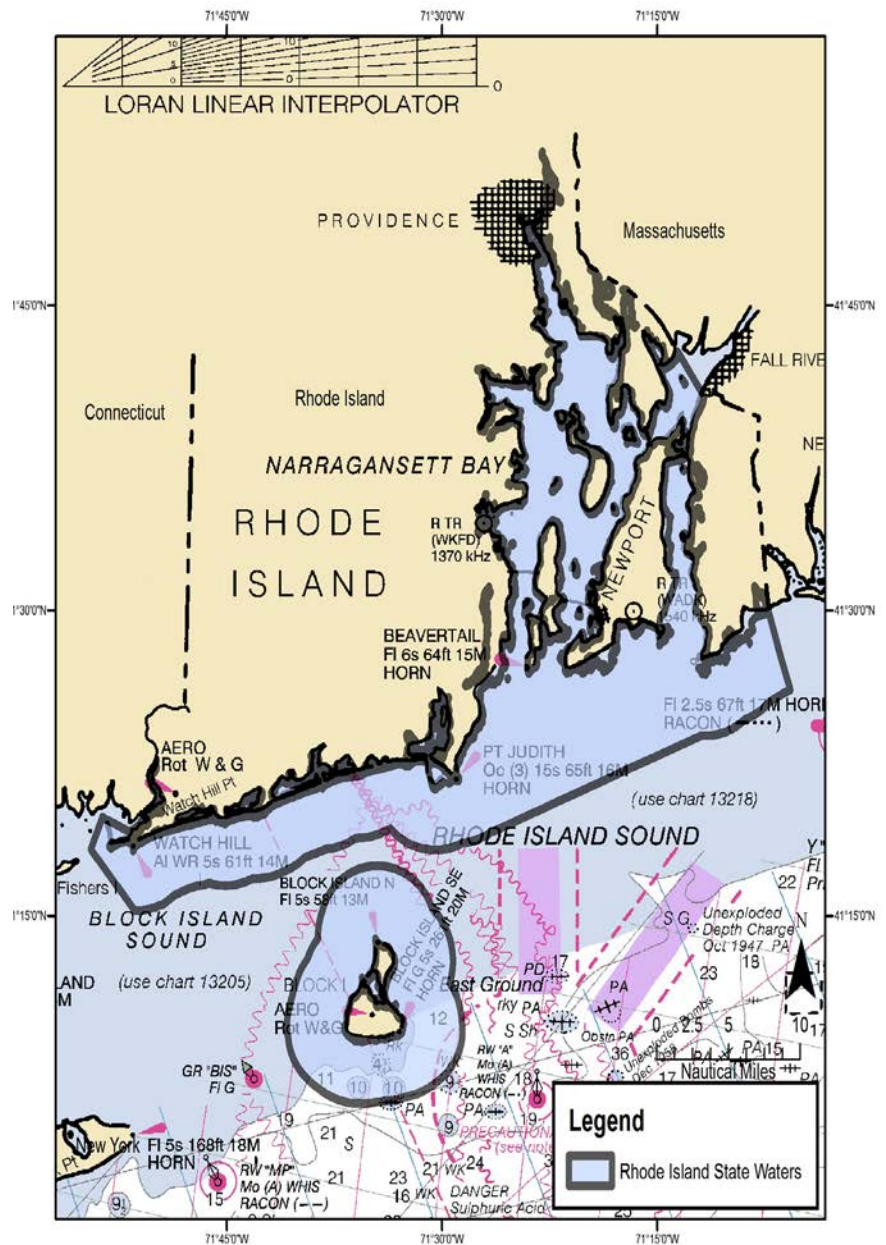
ALL Rhode Island state waters are exempt from ONLY the Plan's Minimum Trap Per Trawl Requirements.

### MIN. TRAP/TRAWL EXEMPTED AREAS

- All Rhode Island State waters

Minimum trap per trawl exempted areas also required to have area specific gear marking colors for single traps:

Single traps in exempt RI state waters  
-- RED & BLUE



Please note: while these areas may be exempt from certain minimum trap per trawl requirements, they are still subject to other Plan requirements. See your regional Plan guide for specific area requirements.

# Weak Links & Anchoring Techniques

## Why Are Weak Links Required?

**Weak links** are intended to allow the release of the buoy, flotation or weighted device from the line in a way that when they release, the remaining line (that was connected to these devices) will not have a knot on its end. An eye left on the line made by splicing, tucking or hog rings is acceptable. Splices are not considered to be knots.

*All weak links must be placed as close as operationally feasible to each individual buoy, flotation or weighted device. Each management area has specific weak link breaking strength requirements. See regional trap/pot and gillnet guides for more information.*

## Weak Links For Buoy, Flotations or Weighted Devices

### 1) HOG RINGS



Figure 1

Hog rings can be used to form an eye in the end of a line that will function as a weak link (Figure 1). Up to 7 may be used to create a 600 pound weak link and up to 5 for a 500 pound weak link. Hog rings can be distributed (from 6” to 12”) without significantly affecting the strength.



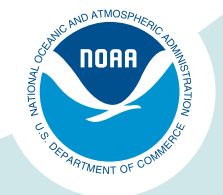
Figure 2

A variation of this technique (Figure 2) is to connect a weak link from a short length of line. The line is formed into a loop with its ends overlapped and hog ringed to each other. Five hog rings form a suitable 600 pound link while 4 are sufficient for a 500 pound weak link. For this weak link to function properly, the loop must move freely where it attaches to both the buoy, flotation, or weighted device and the line.



Figure 3

A line may also be passed through a plastic swivel two times (Figure 3), not forming a knot, and hog ringed back on itself with up to 3 hog rings.





## USING HOG RINGS TO ACHIEVE A SUITABLE WEAK LINK



Figure 4

When threading the buoy line only once through the buoy bucket/spindle, up to 7 hog rings may be used to create a weak link no greater than 600 lbs, and up to 5 hog rings used to create a weak link not exceeding 500 lbs.



Figure 5

A buoy line can be laid alongside a short lead and hog-ringed to form a weak link. 11 hog rings produced a breaking strength of 345 lbs as tested by the NOAA Fisheries Gear Team.



Figure 6

To produce a weak link from a short length of line, the line is formed into a loop with its ends overlapped and hog-ringed to each other. Five hog rings form a suitable 600 lb weak link, while four are sufficient for a 500 lb weak link. The buoy line can be passed through the loop only once, then spliced, hog-ringed or tucked back on itself to make a knotless connection.



Figure 7

A buoy bucket-type weak link can be made using no more than 7 hog rings to create a weak link less than or equal to 600 lbs, and no more than 5 hog rings to create a weak link less than or equal to 500 lb weak link. When using this hog ring buoy bucket-type weak link, the buoy line must pass through the hog-ringed eye only once and be tucked, spliced or hog ringed back to itself, making a knotless eye.



## USING HOG RINGS TO ACHIEVE A SUITABLE WEAK LINK (CONTINUED)



Figure 8

When connecting to the eye of a buoy spindle, a knot may be used on one side of the eye as shown, allowing for easy buoy removal. When threading the buoy line only once through the buoy bucket/spindle or through the loop, up to 7 hog rings may be used to create a weak link no greater than 600 lbs and up to 5 hog rings used to create a weak link not exceeding 500 lbs.



Figure 9

A buoy line can also be passed through the buoy spindle/bucket/swivel two times, not forming a knot, and hog-ringed back on itself up to 3 times forming a weak link, meeting the 600 lb requirement.

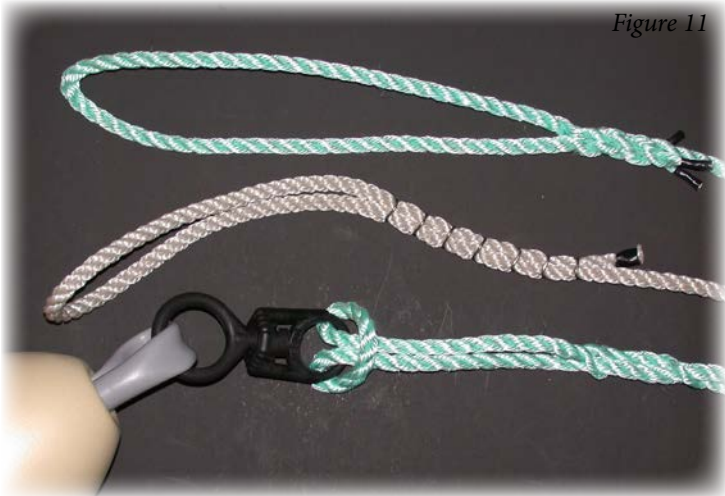
## 2) OFF THE SHELF WEAK LINKS

Off the shelf weak links are available in a variety of styles and configurations to meet different strength requirements. The strong end of the weak link goes toward the buoy, flotation, or weighted device.



Figure 10

## ATTACHING BUOY LINES TO OFF-THE-SHELF WEAK LINKS



Attaching the buoy line to an off-the-shelf weak link using a spliced, tucked or hog-ringed eye will produce a knotless bitter end to the line when the weak link parts.



## ATTACHING BUOY LINES TO OFF-THE-SHELF WEAK LINKS (CONTINUED)



Figure 15



Figure 16

Tying to the weak link with a clove hitch or cow hitch and then splicing or tucking the bitter end of the buoy line under a strand will also produce a knotless system when the weak link parts.



Figure 17

Tying to the weak link with a clove hitch and then tucking the bitter end of the buoy line under a strand will also produce a knotless system when the weak link parts. A loop can be fastened to the strong side of the weak link allowing a fisherman to easily remove the buoy.



Figure 18

Another off-the-shelf weak link is the slip link, which works on the same principle as a jam cleat.

### 3) ROPE OF APPROPRIATE BREAKING STRENGTH

Another weak link technique utilizes Rope Of Appropriate Breaking Strength. A jumper is selected based on breaking strength data from the manufacturer. A length of rope or jumper of appropriate breaking strength may be tied into the buoy, flotation, or weighted device, thus creating a weak link, as long as the failure results in a knotless bitter end on the line. Testing by the NOAA Fisheries Gear Team can make this determination.



Figure 19



Figure 20



Figure 21

### 4) MODIFIED SWIVELS

Some swivels can be modified to conform to the weak link requirement by compromising their strength where the line attaches. However, they must be tested by the NOAA Fisheries Gear Team to ensure that they will release in the proper fashion and within the required limits. Lukian swivels with a 9/32" diameter hole and SeaSide swivels with a 3/16" diameter hole satisfy the 600 pound requirement.





# GILLNET FLOATLINE WEAK LINKS

Several methods of incorporating weak links into a gillnet floatline are shown below. The first two methods create a weak link by utilizing Rope of Appropriate Breaking Strength.

The first picture shows a weak link jumper spliced into the floatline. The overhand knot in the jumper reduces its strength to about 60% of its original strength. For example, putting an overhand knot in a piece of 5/16" polypropylene that has an original tensile strength of 1710 pounds will make the rope fail with a load of about 1025 pounds.

The second picture shows a weak link tied into the float rope with the fisherman's knots. These knots also reduce the strength of the rope to about 60% of its original strength.

Another alternative shows an off the shelf weak link rigged into the floatline.

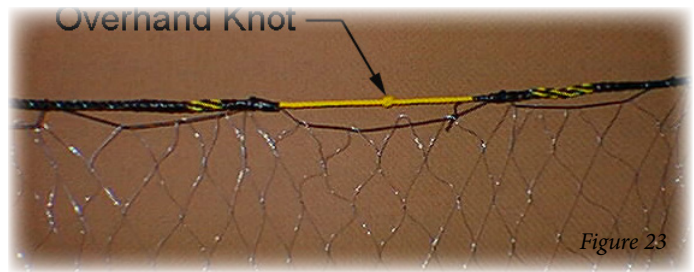


Figure 23



Figure 24



Figure 25



Figure 26

# GILLNET ANCHORING TECHNIQUES

At the right is an example of a burying anchor (designed to hold to the ocean bottom through the use of a fluke, spade, plow or pick) that meets the requirement of the holding power of a 22-pound Danforth-style anchor. Note, dead weights do not meet the requirements for burying anchors.

For More Information Contact the NOAA Fisheries Greater Atlantic Gear Team

Fisheries Liaison: John Higgins. (207) 677-2316. [John.Higgins@noaa.gov](mailto:John.Higgins@noaa.gov)

or visit our website:

[www.greateratlantic.fisheries.noaa.gov/whaletrp](http://www.greateratlantic.fisheries.noaa.gov/whaletrp)

# Atlantic Large Whale Take Reduction Plan

## Gear Marking

### Why Is Gear Marking Required?

The Atlantic Large Whale Take Reduction Plan requires that surface buoys and buoy lines be marked with information that will allow us to better understand where and how whales become entangled in vertical lines associated with trap/pot and gillnet fisheries.



### Surface Buoy Marking

#### SURFACE BUOYS ARE TO BE MARKED WITH:

Markings to help identify the associated vessel or fishery by including one of the following:

- the owner's boat registration number and/or US vessel documentation number;
- Federal commercial fishing permit number; or
- Whatever positive identification is required by the vessel's home-port state.

When marking is not already required by state or federal regulations, the letters and numbers must meet the following requirements:

- At least 1-inch (2.5cm) in height;
- Block letters or Arabic numbers; and
- In a color that contrasts with the color of the buoy.

### Buoy Line Marking:

#### BUOY LINES ARE TO BE MARKED WITH:

**THREE** 12 inch (30.48 cm) colored marks:

- one at the top of the buoy line,
- one midway along the buoy line, and
- one at the bottom of the buoy line.

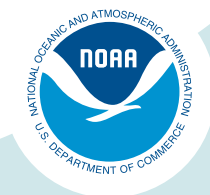
If the mark consists of two colors, **EACH COLOR** mark may be 6-inches for a **TOTAL MARK** of 12-inches.

Each color code must be permanently affixed on or along the line and each color code must be clearly visible when the gear is hauled or removed from the water.



# TRAP/POT GEAR MARKING REQUIREMENTS

Gear Marking Color	Applicable Trap/Pot Management Area
<b>RED</b>	<ul style="list-style-type: none"> <li>• Massachusetts Restricted Area</li> <li>• Northern Nearshore Trap/Pot Waters</li> <li>• Northern Inshore State Trap/Pot Waters</li> <li>• Stellwagen Bank Jeffreys Ledge Restricted Area</li> <li>• Great South Channel Restricted Area overlapping Lobster Management Area (LMA) 2 and/or the Outer Cape (OC) LMA</li> </ul>
<b>RED &amp; BLUE</b>	<ul style="list-style-type: none"> <li>• Exempt RI state waters</li> </ul>
<b>RED &amp; WHITE</b>	<ul style="list-style-type: none"> <li>• Exempt MA state waters in LMA 1</li> </ul>
<b>RED &amp; BLACK</b>	<ul style="list-style-type: none"> <li>• Exempt MA state waters in LMA 2</li> </ul>
<b>RED &amp; YELLOW</b>	<ul style="list-style-type: none"> <li>• Exempt MA state waters Outer Cape</li> </ul>
<b>RED &amp; ORANGE</b>	<ul style="list-style-type: none"> <li>• Isle of Shoals, Maine</li> </ul>
<b>RED &amp; PURPLE</b>	<ul style="list-style-type: none"> <li>• Jordan Basin (Trap/Pot) overlapping LMA 1</li> </ul>
<b>RED &amp; BLACK</b>	<ul style="list-style-type: none"> <li>• Jordan Basin (Trap/Pot) overlapping Offshore Trap/Pot Waters</li> </ul>
<b>ORANGE</b>	<ul style="list-style-type: none"> <li>• Southern Nearshore Trap/Pot Waters.</li> </ul>
<b>BLACK</b>	<ul style="list-style-type: none"> <li>• Offshore Trap/Pot Waters; Great South Channel Restricted Area overlapping with the LMA 2/3 Overlap and/or LMA 3</li> </ul>
<b>BLUE &amp; ORANGE</b>	<ul style="list-style-type: none"> <li>• Southeast Restricted Area North (state waters)</li> </ul>
<b>GREEN &amp; ORANGE</b>	<ul style="list-style-type: none"> <li>• Southeast Restricted Area North (Federal waters)</li> </ul>



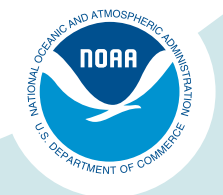
# GILLNET GEAR MARKING REQUIREMENTS

Gear Marking Color	Applicable Gillnet Management Area
<b>RED &amp; GREEN</b>	<ul style="list-style-type: none"> <li>• Jeffrey Ledge (Trap/Pot)</li> </ul>
<b>GREEN &amp; BLACK</b>	<ul style="list-style-type: none"> <li>• Jeffrey Ledge (Gillnet)</li> </ul>
<b>GREEN &amp; YELLOW</b>	<ul style="list-style-type: none"> <li>• Jordan Basin (Gillnet)</li> </ul>
<b>BLUE &amp; ORANGE</b>	<ul style="list-style-type: none"> <li>• Southeast Restricted Area North (state waters)</li> </ul>
<b>GREEN &amp; ORANGE</b>	<ul style="list-style-type: none"> <li>• Southeast Restricted Area North (Federal waters)</li> </ul>
<b>GREEN</b>	<ul style="list-style-type: none"> <li>• Cape Cod Bay Restricted Area</li> <li>• Great South Channel Restricted Gillnet Area</li> <li>• Great South Channel Sliver Restricted Gillnet Area</li> <li>• Stellwagen Bank/Jeffreys Ledge Restricted Area</li> <li>• Other Northeast Gillnet Waters (Northeast &amp; Mid-Atlantic)</li> </ul>
<b>BLUE</b>	<ul style="list-style-type: none"> <li>• Mid/South Atlantic Gillnet Waters</li> </ul>
<b>YELLOW</b>	<p><b><u>Excluding Shark Gillnet:</u></b></p> <ul style="list-style-type: none"> <li>• Southeast US Restricted Area South*</li> <li>• Other Southeast Gillnet Waters*</li> </ul>
<b>GREEN &amp; BLUE</b>	<p><b><u>Shark Gillnet (with webbing of 5" or greater)</u></b></p> <ul style="list-style-type: none"> <li>• Southeast US Monitoring Area*</li> <li>• Southeast US Restricted Area South*</li> <li>• Other Southeast Gillnet Waters*</li> </ul>

\*Southeast gillnet management areas also require that each gillnet panel be marked along both the floatline and the leadline at least once every 100 yards, unless otherwise required.

Public reporting burden for this collection of information is estimated to average 5 minutes per response, including the time for reviewing instructions, searching existing data sources, gathering and maintaining the data needed, and completing and reviewing the collection of information. Send comments regarding this burden estimate or any other suggestions for reducing this burden to NMFS Office of Protected Resources, 1315 East West Highway, Silver Spring, MD 20910.

Notwithstanding any other provisions of the law, no person is required to respond to, nor shall any person be subjected to a penalty for failure to comply with, a collection of information subject to the requirements of the Paperwork Reduction Act, unless that collection of information displays a currently valid OMB Control Number.







**NOAA  
FISHERIES**

**August 2018**

**[www.greateratlantic.fisheries.noaa.gov](http://www.greateratlantic.fisheries.noaa.gov)**

**OFFICIAL BUSINESS**

**National Marine Fisheries Service  
Greater Atlantic Regional Fisheries Office  
55 Great Republic Drive  
Gloucester, MA 01930**