

ORS Resources for the NIH Research Community

Offered by the NIH Office of Research Services (ORS)

Office of Research Services

- Located within the Office of Management, ORS provides services and resources to NIH researchers that support the efficient and safe operation of the NIH.



Scientific Resources (SR)

- Offers services to support the coordination and management of scientific and regulatory activities at NIH.
- Operates in cooperation with the NIH Office of Intramural Research.



NIH Library

Occupational Health and Safety

Radiation Safety

Scientific Equipment Services

Veterinary Resources

Medical Arts



Forecasting Science was a collaborative study between the NIH Library and ORS to identify research trends and best position NIH's support services to meet those needs.

One of the key findings of the study highlighted the need for **greater awareness of ORS services** by IRP Scientists.

ADDITIONAL KEY FINDINGS:

- Research is increasingly multi-disciplinary and collaborative
- Bioinformatics expertise and support are crucial
- Need for level playing field for accessing services and technology
- Regulatory expertise and support are critical
- Expanding access to critical technology is vital
- “Science” must be the driving force behind support services

NIH Library

Providing access to resources and services to support the information needs of the intramural research community



Resources

- The NIH Library provides access to a wide variety of resources to support intramural research and information needs.

Journals: over 15,000 scholarly journals

eBooks: 120,000+ scholarly eBooks online and fully searchable

Databases: 200 databases including Micromedex, UpToDate, PubMed@NIH, Scopus, & Web of Science

Research Tools: high-performance workstations and analysis tools



Resources

- The NIH Library provides access to a wide variety of resources to support intramural research and information needs.

Services

- The NIH Library delivers a range of services spanning one-on-one consultations and tutorials to multi-hour training on a variety of biomedical research topics.

SERVICES

[3D Printing](#)

[Bibliometrics](#)

[Bioinformatics Support](#)

[Custom Information Solutions](#)

[Data](#)

[Editing](#)

[Informationist Program](#)

[Systematic Reviews](#)

[Technology Hub](#)

[Training](#)

[Translations](#)



Bibliometrics and Portfolio Analysis

- Publication analysis services aiding researchers and administrators in understanding and evaluating the citation impact of publications produced by scientists, grant programs, and institutions at NIH and worldwide.

SERVICE DETAILS

Consultations on designing and using bibliometric analyses

Training on bibliometric theory and techniques

Customized analyses designed to meet specific customer needs

PUBLICATION ANALYSES INCLUDE

Measuring productivity

Detecting collaboration

Identifying research topics

Assessing citation impact



Bibliometrics and Portfolio Analysis

- Publication analysis services aiding researchers and administrators in understanding and evaluating the citation impact of publications produced by scientists, grant programs, and institutions at NIH and worldwide.

Bioinformatics Support

- Provides consultations, training, and resources to further the understanding of the molecular basis of disease.

SERVICE DETAILS

Support and software to analyze and interpret high-throughput data

Three bioinformatics workstations available for reservation

SUPPORT INCLUDES

Analysis Tools and Databases

Classroom Training

Consultations

One-on-one tutorials

High-Performance Computing



Bibliometrics and Portfolio Analysis

- Publication analysis services aiding researchers and administrators in understanding and evaluating the citation impact of publications produced by scientists, grant programs, and institutions at NIH and worldwide.

Bioinformatics Support

- Provides consultations, training, and resources to help further the understanding of the molecular basis of disease.

Data Services

- Develops training, tools, and services that support data management throughout the entire data life-cycle.

SERVICE DETAILS

The Data Sciences workstation offers a suite of tools for data analysis, processing, and visualization.

TRAINING AND CLASSES

Data management

Data visualization

Data analysis

R and RStudio

Statistical software support



Ask A Question:

<https://www.nihlibrary.nih.gov/services/ask-question>

NIH Library web site:

<https://www.nihlibrary.nih.gov>

Request a Consultation or Tutorial:

<https://www.nihlibrary.nih.gov/services/consultations-tutorials>

NIH Library Information Desk:

(301) 496-1080

Find Your Librarian:

<https://www.nihlibrary.nih.gov/services/find-your-librarian>



Division of Occupational Health and Safety

Ensuring the highest practical degree of safety and health for employees in all activities of the NIH



Biological Safety Cabinet (BSC) Stocking Program

- Provides many services regarding certification, maintenance, repair, and decontamination of biological safety cabinets.

PROGRAM DETAILS

Class II, Type A2 BSCs

- 4 foot or 6 foot BSCs available within 3-4 days following lab clearance by DOHS
- 3 foot and 5 foot BSCs will take 6-8 weeks following lab clearance by DOHS



Biological Safety Cabinet (BSC) Stocking Program

- Provides many services regarding certification, maintenance, repair, and decontamination of biological safety cabinets.

Integrated Pest Management

- Provides long-term pest management solutions so that the research, lab environment, and staff are not compromised.

INTEGRATED PEST MANAGEMENT SERVICES

Traps

Visual Inspections

Staff interviews



Integrated Pest Management

- Provides long-term pest control so that the research, lab environment, and staff are not compromised.

Ergonomic Evaluations

- Reduces musculoskeletal disorders through ergonomic evaluations, including common lab-related techniques.

COMMON ERGONOMIC EVALUATIONS

Repetitive pipetting

Microscopy

Working at biosafety cabinets

Working at lab workbenches

Using a microtome

Micro-manipulation techniques



Biological Safety Cabinet Stocking Program

Mark Gibson

Biological Safety Cabinet Stocking Program

Manager gibsomar@ors.od.nih.gov

(301) 496-3457

Ergonomic Evaluations

Daveta Bailey

Ergonomics Program Manager

daveta.bailey@nih.gov

(301) 451-5992

Integrated Pest Management

Trevor Lubbert

Integrated Pest Management Program Manager

lubberrt@ors.od.nih.gov

(301) 451-1484

DOHS web site:

<https://www.ors.od.nih.gov/sr/dohs>





Division of Radiation Safety (DRS)

Specialists in radiation safety, regulatory compliance, and risk management for biomedical, clinical, and translational research efforts



Training

- Conducts and leads a comprehensive program of radiation safety classes for all NIH radiation workers and ancillary staff.
- Register for [initial training](#) or [refresher training](#) on the DRS website.

TRAINING TOPICS

Radiation Safety for Authorized Users

Radiation Safety in the Laboratory

Radiation Safety for Irradiator Users

Radiation Safety Orientation

Radiation Safety for Clinical Center Nurses

Patient Care and Animal Personnel X-ray



Training

- Conducts and leads a comprehensive program of radiation safety classes for all NIH radiation workers and ancillary staff.

Policies and Procedures

- Provides up-to-date guidance on a wide range of radiation safety policies and procedures.
- More information on [policies](#) available online.

GUIDANCE AVAILABLE

Radiation Safety Protocols

Ordering/Receiving/Shipping
Radioactive Materials

General Laboratory
Practices

Equipment Clearances

Contamination Monitoring

Exposure Monitoring

Radioactive Waste
Management



Contamination Surveys

- Monthly laboratory contamination surveys are mandatory in all modules where radioactive material may be used or stored.
- Contact DRS to hire an approved contractor to perform this service if desired.



Contamination Surveys

- Monthly laboratory contamination surveys are mandatory in all modules where radioactive material may be used or stored.

Shipping Services

- DRS staff are DOT-trained to perform shipping services when radioactive materials are sent off site.
- Contact DRS to arrange for radioactive materials shipping services.



Radiation Safety Training

Laurenti K. Ngutter
Training Coordinator
drstraining@mail.nih.gov
(301) 496-2255

Radiation Safety Operations

Laurenti K. Ngutter
Chief, Radiation Safety Operations Branch
ngutterl@mail.nih.gov
(301) 594-0958

Laboratory Contamination Surveys

Curtis DeBraux
Project Manager
(301) 496-5774

Shipping Radioactive Materials

Andrew Cabot
Shipping Coordinator
(301) 496-3277

DRS website:

<https://drs.ors.od.nih.gov>





**Division of Scientific Equipment and
Instrumentation Services (DSEIS)**

*Your on-campus source for lab equipment – purchase,
rent and maintain*



Equipment sales program

- NIH Intramural researchers can purchase commonly used lab equipment through the NIH Business System (NBS) Internal Requisition module.

INVENTORY

Freezers

Thermal cyclers (PCRs)

Centrifuges

Incubators

Microscopes

Spectrophotometers

Microplate readers



Equipment sales program

- NIH Intramural researchers can purchase commonly used lab equipment through the NIH Business System (NBS) Internal Requisition module.

Advantages

- Reduces administrative burden for procurement and acquisitions.
- Rates are pre-negotiated, usually lower than GSA.

INVENTORY

Freezers

Thermal cyclers (PCRs)

Centrifuges

Incubators

Microscopes

Spectrophotometers

Microplate readers



Equipment rental program

- Rents over 400 pieces of equipment with options for short-term rental or rent-to-buy.

INVENTORY

Freezers

Thermal cyclers (PCRs)

Centrifuges

Incubators

Microscopes

Spectrophotometers

Microplate readers



Equipment rental program

- Rents over 400 pieces of equipment with options for short-term rental or rent-to-buy.

Advantages

- Helps reduce capital investments, property transactions, and procurement efforts and time.

INVENTORY

Freezers

Thermal cyclers (PCRs)

Centrifuges

Incubators

Microscopes

Spectrophotometers

Microplate readers



Equipment rental program

- Rents over 400 pieces of equipment with options for short-term rental or rent-to-buy.

Advantages

- Helps reduce capital investments, property transactions, and procurement efforts and time.

NIH FreeStuff Program

- Web-based resource for NIH personnel to exchange equipment and supplies.
- <http://stuff.nih.gov>



Laboratory Equipment Maintenance & Repair

- Onsite technicians offer comprehensive, cost-effective maintenance services.
- Performs calibrations and inspections, including scheduled preventive maintenance.
- Provides service on an as-needed basis or under a Full-Service and Lab-Wide Maintenance Agreement.

MOST FREQUENT MAINTENANCE REQUESTS

Freezers

Centrifuges

PCRs

Incubators

Water baths

Shakers/mixers

Balances

Microscopes

Printers



DSEIS web site:

<http://dseis.od.nih.gov>

Rental and Sales

Anju Vergheese

Branch Chief

(301) 496-9748

rental@ors.od.nih.gov

NIH FreeStuff Program:

<http://stuff.nih.gov>

Laboratory Equipment Maintenance and Repair

Jerry Tyus

Branch Chief

(301) 496-4131

DSEIS_repairs@nih.gov



Division of Veterinary Resources

Excellence in animal care and specialized research services to support the NIH intramural research mission



Facilities Management

- Manages a major part of all animal facility space at the NIH, with capabilities in conventional, SPF and hazard containment environments.
- Can accommodate virtually any animal species required in biomedical research.

FACILITIES MANAGEMENT

Animal holding

Animal procurement

Animal transportation

Laboratory Animal
Research Contract (LARC)

Cagewash services



Facilities Management

- Manages a major part of all animal facility space at the NIH. Can accommodate virtually any animal species.

Veterinary Medicine

- Provides daily clinical oversight to facilities.
- Provides surgical and technical support to NIH researchers.

VETERINARY MEDICINE

Animal imports & exports

Non-human primate
quarantine

Pharmacy

Surgery & Radiology

Veterinary care

Nutrition



Facilities Management

- Manages a major part of all animal facility space at the NIH.

Veterinary Medicine

- Provides clinical, surgical, and technical support.

Animal Behavior and Welfare

- Addresses the physical and psychological well being of all animal species.

ANIMAL BEHAVIOR AND WELFARE

Social housing

Positive reinforcement training

Behavioral assessment

Environmental enrichment



Division of Veterinary Resources (DVR)

Animal Behavior and Welfare

- Addresses the well being of all animal species.

Diagnostic and Research Services

- Provides, manages and evaluates a wide variety of scientific services in veterinary pathology and clinical and molecular microbiology.
- Coordinates health screening for NIH animal facilities
- Contact DVR Diagnostic and Research Services to schedule a consultation.

DIAGNOSTIC AND RESEARCH SERVICES

Bacteriology

Health surveillance

Molecular microbiology

Mouse phenotyping

Pathology

Electron microscopy



Facilities Management

Valerie Harrington

Facility Management Branch Chief

(301) 443-7110

harringv@mail.nih.gov

Veterinary Medicine Branch

Dr. Garry Linton

Veterinary Medicine Branch Chief

(301) 402-0123

lintoncg@mail.nih.gov

Animal Behavior and Welfare

Dr. Kelly Rice

Program Coordinator (Acting)

(301) 594-3778

kelly.rice@nih.gov

Diagnostic and Research Services

Dr. Michael A. Eckhaus

Chief, Diagnostic & Research Services Branch

Chief, Pathology Service

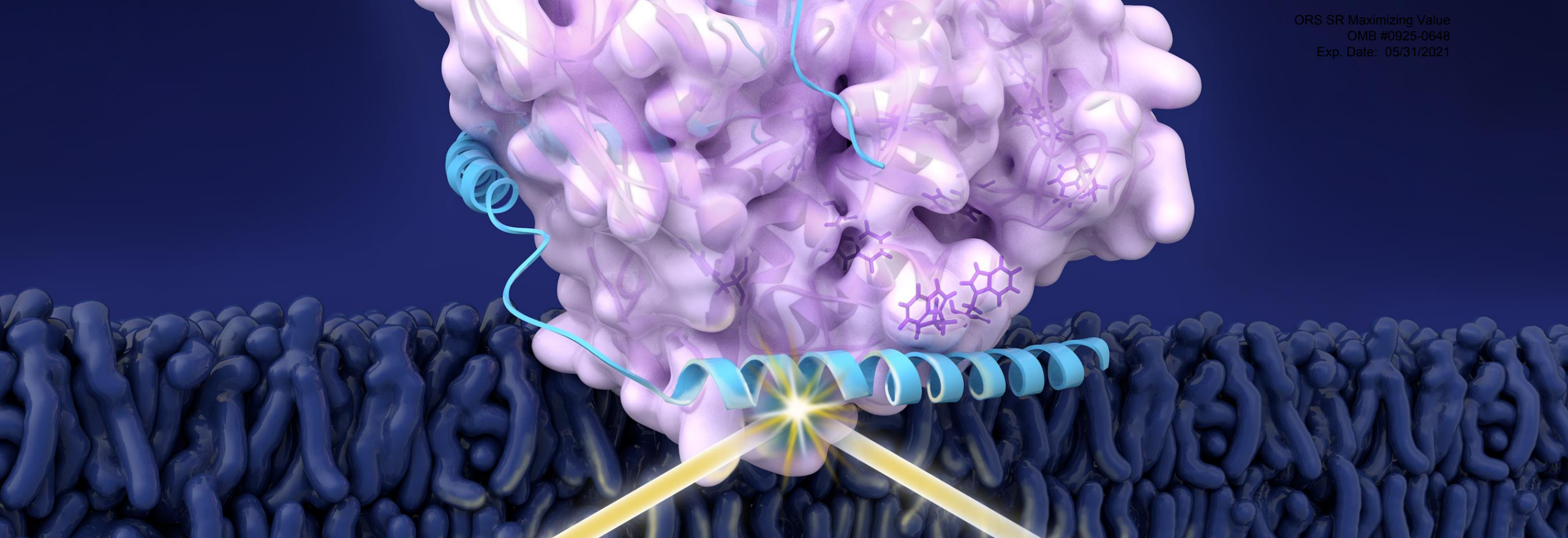
(301) 496-4465

eckhausm@vrp.ncrr.nih.gov

DVR web site:

<https://www.ors.od.nih.gov/sr/dvr>





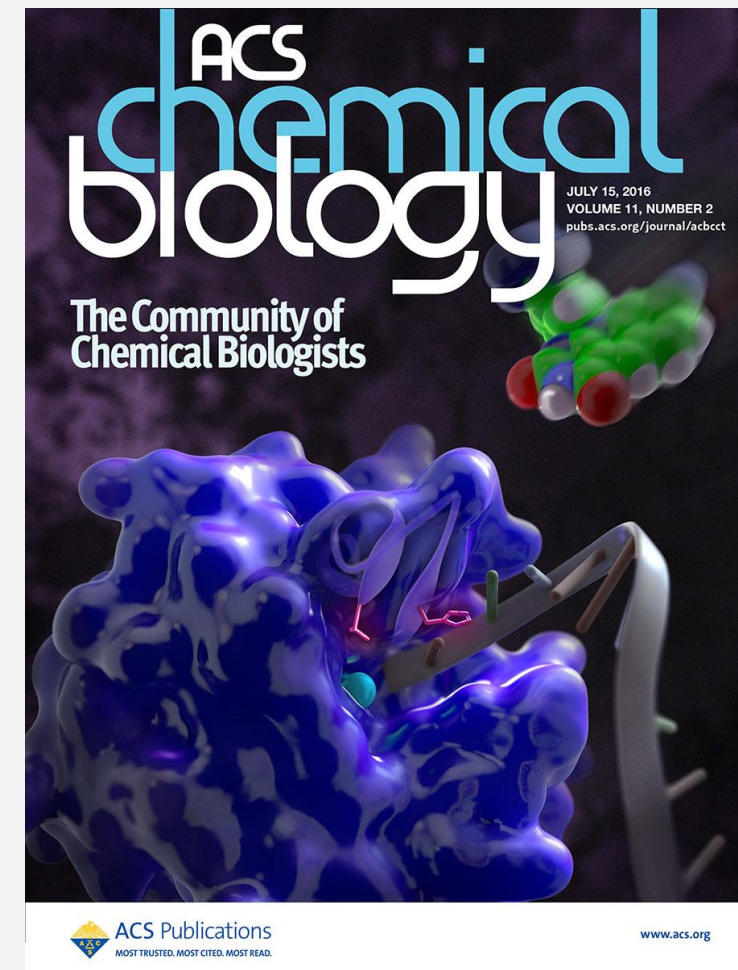
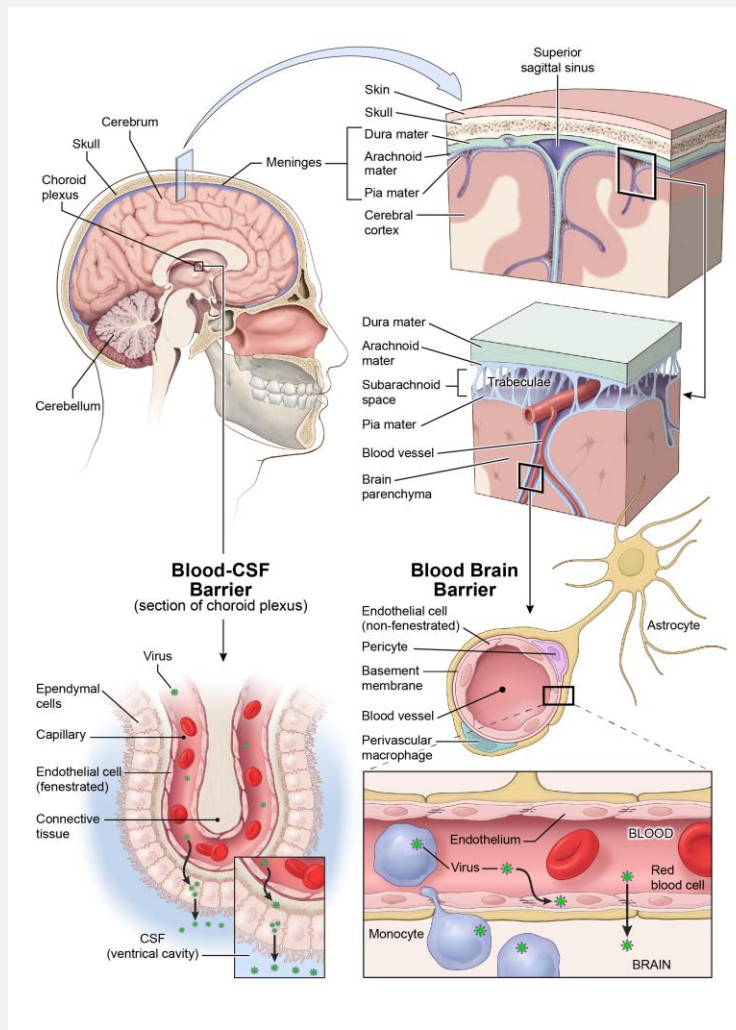
Medical Arts Branch

*NIH's in-house creative studio offering services
in medical illustration, visual communication,
and production*



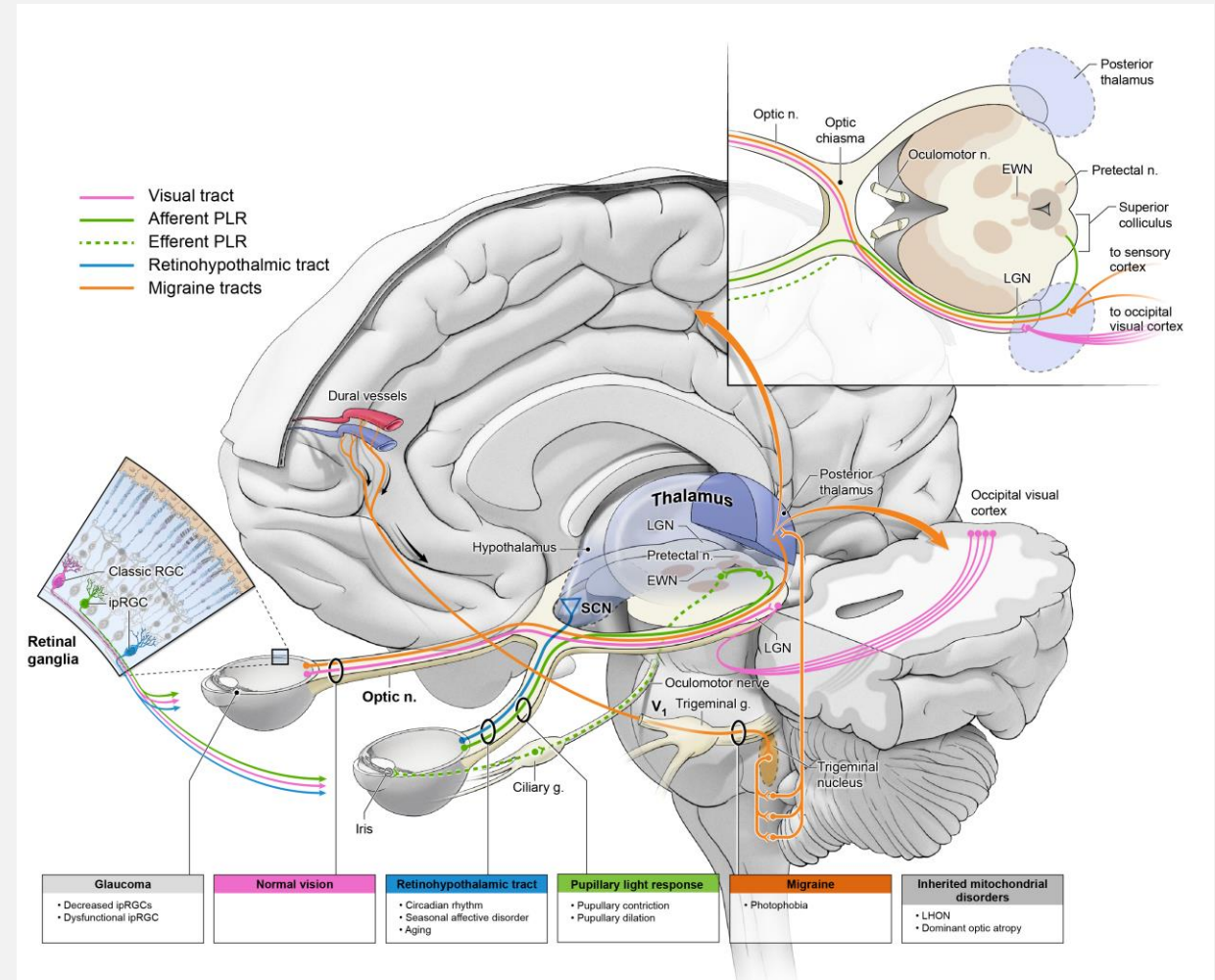
Medical Illustration

- Scientifically trained biomedical illustrators



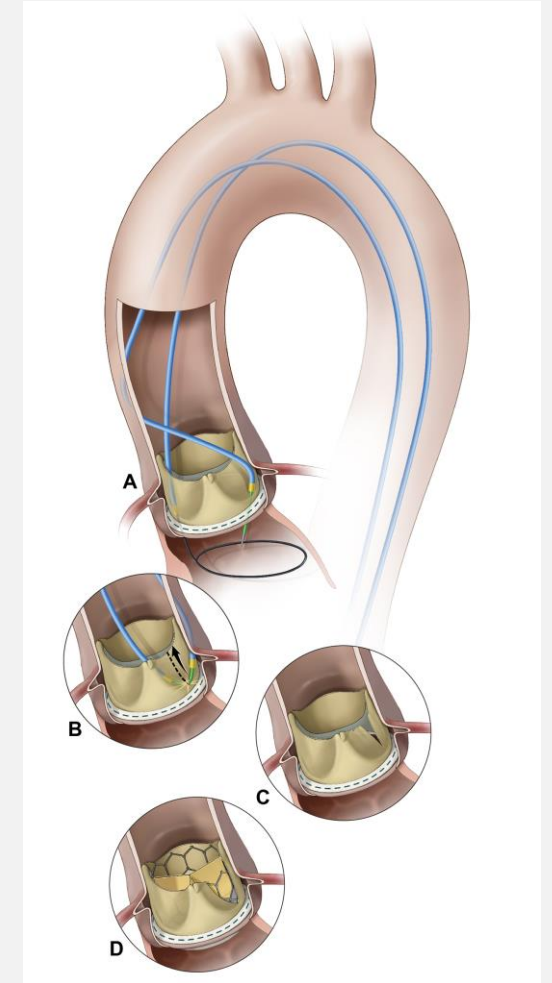
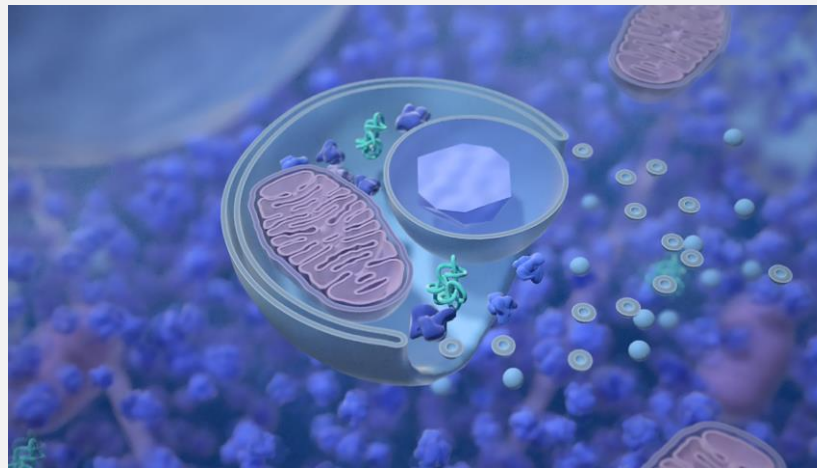
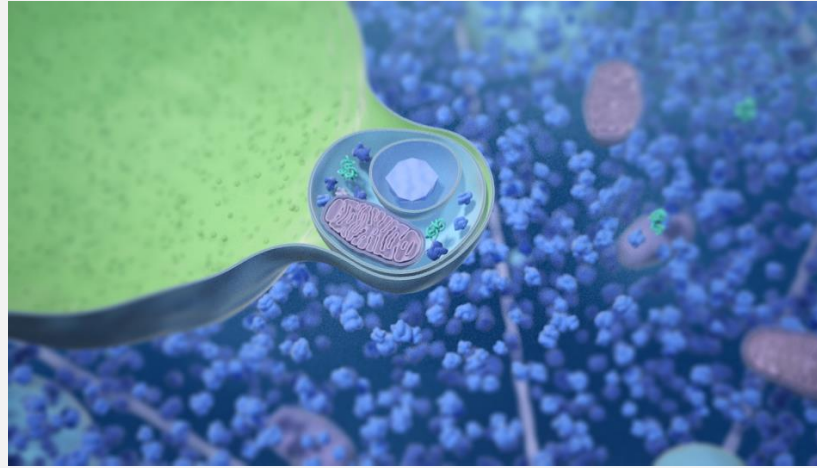
Medical Illustration

- Scientifically trained biomedical illustrators
- Close collaboration with researchers to create accurate, compelling imagery that function as key components of journal manuscripts and presentations



Medical Illustration Capabilities

- Manuscript figures
- Infographics
- Animations
- Journal covers



Graphic Design

- Professionally trained staff
- NIH expertise

IMMUNOHEMATOLOGY & BLOOD TRANSFUSION

36TH ANNUAL SYMPOSIUM

Description:
This program is designed to provide attendees with practical information about recent developments, current practices, controversies and laboratory management issues relative to transfusion medicine.

Audience:
This program will be of interest to all healthcare providers who participate in the collection, production, transfusion and monitoring of blood products.

SEPT 28, 2017
THURSDAY, 8:25 AM - 4:00 PM
NATIONAL INSTITUTES OF HEALTH
BUILDING 10, MASUR AUDITORIUM
CLINICAL CENTER

NIH National Institutes of Health
Department of Transfusion Medicine
NIH CLINICAL CENTER 60 YEARS OF COURAGE AND CURES
NO REGISTRATION FEE
REGISTER www.cc.nih.gov/dtm
SIGN LANGUAGE INTERPRETATION
WILL BE PROVIDED. FOR MORE
INFORMATION OR ACCOMMODATION
CALL 301.402.8180
NATIONAL INSTITUTES OF HEALTH CLINICAL CENTER
DEPARTMENT OF TRANSFUSION MEDICINE AND
THE AMERICAN RED CROSS

NATIONAL LIBRARY OF MEDICINE
BIOMEDICAL INFORMATICS
AND DATA SCIENCE LECTURE

Translating from
Chemistry to Clinic with
deep learning

S. Joshua Swamidass, MD, PhD
Wednesday, March 7, 2018, 2:00-3:00 pm
Natcher Conference Center (Building 45), Room 1E12

Sponsored by:
Dr. Valerie Poiranne, Associate Director for Extramural Programs
Extramural Programs Division, National Library of Medicine

Event Contact:
Janet Yu, PhD, Division of Extramural Programs
National Library of Medicine, NIH
301.594.4882 - Janet.Yu@nih.gov



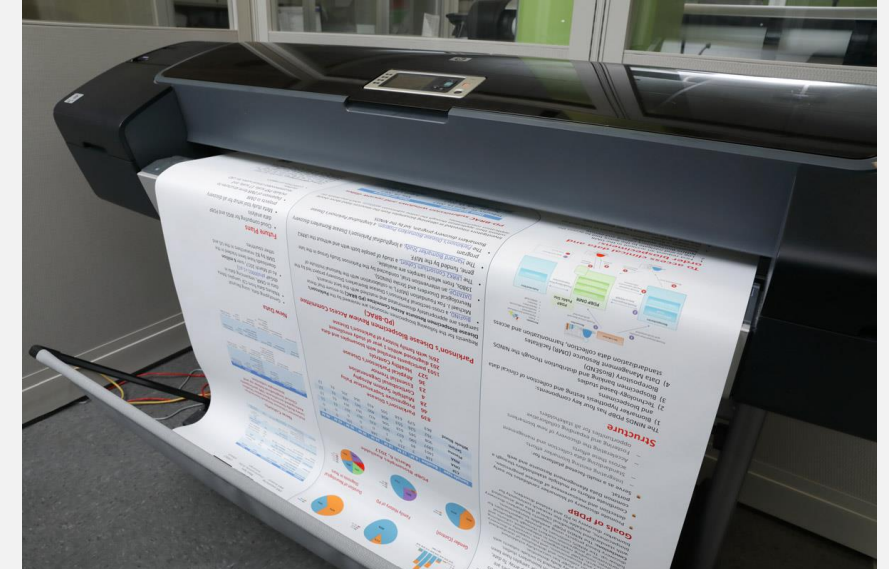
Graphic Design Capabilities

- Scientific poster design
- Event poster design
- Publication and report design
- Logos and brand systems
- User interface design
- Exhibit design and environmental graphic design (large-format graphics/artwork)



Production

- Scientific poster printing on paper or cloth
- Scanning, mounting, framing, high-resolution photo prints, more



**Medical Arts Customer
Service (M-F, 8:30-5)**
(301) 496-3221

Web site:
<http://medarts.nih.gov>

Illustration
Alan Hoofring
Lead Medical Illustrator
(301) 827-8414
MedicalIllustration@mail.nih.gov

Design
Martha Blalock
Creative Director
(301) 827-8401
design@mail.nih.gov

Production
India Taylor
Production Lead
(301) 827-8427
ExpressServices@mail.nih.gov





CREx: The Collaborative Research Exchange
for the NIH Intramural Research Program

NIH.scientist.com

WELCOME TO CREX, THE COLLABORATIVE RESEARCH EXCHANGE FOR THE NIH INTRAMURAL RESEARCH PROGRAM

Welcome back, Bonnie Hamalainen.

User profile card showing a placeholder for a profile picture, a welcome message for 'First Lastname, PhD', a progress bar indicating 60% profile completion, and a section for recent requests.

START A NEW REQUEST form with an input field for the request title and a NEXT button.


Your favorites will show up here. Select favorites >


QUICK LINKS


- List of quick links including NIH Intramural Research Program (IRP) Cores, NIH Collaborative Resources, Shared/Walk-Up Instrumentation and Software Tools, and NIH Biowulf Computational Cluster.



WELCOME TO CREX, THE COLLABORATIVE RESEARCH EXCHANGE FOR THE NIH INTRAMURAL RESEARCH PROGRAM



WELCOME,
First Lastname, PhD
Add a job title 

 Your profile is **60%** complete.
Next: **Personal Details.**



Your recent requests will show up here.

START A NEW REQUEST 



Enter a title for your request... 

Your favorites will show up here. [Select favorites >](#)

QUICK LINKS

 **NIH Intramural Research Program (IRP) Cores** 
Comprehensive list of core facilities available through the NIH Intramural Research Program (IRP).

CREx is an NIH exclusive online searchable platform where IRP researchers can locate resources, services, and external vendor information to support their work at NIH.

 **NIH Biowulf Computational Cluster** 
Access full suite of scientific applications and databases, including tools for sequence analysis, linkage analysis, phylogenetic analysis, microarray analysis, gene regulation and pathways, computational chemistry, molecular modeling, structural biology, mathematical analysis, proteomics, image analysis, molecular graphics, program development, and scientific databases.



WELCOME TO CREX, THE COLLABORATIVE RESEARCH EXCHANGE FOR THE NIH INTRAMURAL RESEARCH PROGRAM

HOME / NIH IRP CORES

NIH IRP Cores

Research Categories

- Animal Resources
- Bioinformatics, Biostatistics and Computing
- Cell Banking and Aliquoting
- Chemistry, Biophysics and Structural Biology
- Clinical Research Support
- Flow Cytometry
- Genetics and Genomics
- Imaging and Microscopy
- Lab Equipment & Fabrication Resources
- Pharmacology
- Proteins and Proteomics
- Scientific Graphics
- Single Cell Analysis
- Stem Cell Biology and Technology

WELCOME TO CREX, THE COLLABORATIVE RESEARCH EXCHANGE FOR THE NIH INTRAMURAL RESEARCH PROGRAM

HOME / NIH IRP CORES

NIH IRP Cores

Research Categories

- Animal Resources
- Bioinformatics, Biostatistics and Computing
- Cell Banking and Aliquoting
- Chemistry, Biophysics and Structural Biology
- Clinical Research Support

Flow Cytometry

Genetics and Genomics
Microscopy
Fabrication Resources

Proteins and Proteomics

Scientific Graphics
Single Cell Analysis
Stem Cell Biology and Technology

IRP scientists can easily engage with innovative resources and technologies using key word searches to locate services, tools, and equipment across the NIH.

WELCOME TO CREX, THE COLLABORATIVE RESEARCH EXCHANGE FOR THE NIH INTRAMURAL RESEARCH PROGRAM

HOME / ORS CORES

ORS Cores

Services and expertise available to all NIH investigators.

ORS Core

Division of Scientific Equipment and Instrumentation Services (DSEIS)

DSEIS provides laboratory equipment sales, rental, repairs, and maintenance to IRP scientists.

ORS Core

Division of Veterinary Resources (DVR)

DVR is the central animal care program that provides research collaboration through housing, veterinary care, technical support, animal transportation/procurement, surgery/ICU/pharmacy, diagnostics (pathology), mouse phenotyping, behavior consultation, animal training, and nutrition consultation.

ORS Core

Division of Veterinary Resources (DVR) - Animal Surgery

For over 40 years, DVR's Animal Surgery has supported large animal research and clinical care. Our surgeons provide outstanding and highly specialized large animal (rabbits, ungulates, etc.) research support in a state of the art surgical suite. Specialty support includes surgical expertise, surgical and technical support, animal model development, and investigator training.

ORS Core

Division of Veterinary Resources (DVR) - Pathology Service

The Pathology Service within DVR provides gross and histopathologic evaluation of any species of laboratory animals used in the NIH IRP due to morbidity, mortality or unexpected findings. In addition, mouse phenotyping and transmission electron microscopy services are available.

WELCOME TO CREX, THE COLLABORATIVE RESEARCH EXCHANGE FOR THE NIH INTRAMURAL RESEARCH PROGRAM

HOME / ORS CORES

ORS Cores

Services and expertise available to all NIH investigators.

ORS Core

Division of Scientific Equipment and Instrumentation Services (DSEIS)

DSEIS provides laboratory equipment sales, rental, repairs, and maintenance to IRP scientists.

ORS Core

Division of Veterinary Resources (DVR)

DVR is the central animal care program that provides comprehensive veterinary care to all NIH investigators. Services include: animal transportation, surgery/ICU, pathology, mouse phenotyping, behavior consultation, animal training, and nutrition consultation.

ORS Core

Division of Veterinary Resources (DVR) - Animal Surgery

Surgeons provide outstanding and state of the art surgical suite. Specialty support includes surgical expertise, surgical and technical support, animal model development, and investigator training.

ORS Core

Division of Veterinary Resources (DVR) - Pathology Service

Provides gross and histopathologic services to all NIH investigators. Animals used in the NIH IRP due to mortality or unexpected findings. In addition, mouse phenotyping and transmission electron microscopy services are available.

Smarter sourcing from external vendors and a built in customer review module allows CREx users to benefit from their NIH colleagues' expertise.

Dr. Lakshmi Darbha

lakshmi.darbha@nih.gov

(240) 760-6061

Christin Olsen

christin@scientist.com

CREx website

<https://nih.scientist.com>

CREx Office Hours @ NIH Library

Tuesdays, 11:00 am – 1:00 pm

Wednesdays, 11:00 am – 1:00 pm



Office of Research Services: *Supporting Research, Maximizing Value*