



National Institutes of Health  
*Office of Management*

ORS SR Maximizing Value  
OMB #0925-0648  
Exp. Date: 05/31/2021

# ORS Resources for the NIH Research Community

Offered by the NIH Office of Research Services (ORS)

Office of Research Services  
National Institutes of Health  
U.S. DEPARTMENT OF HEALTH AND HUMAN SERVICES

## Office of Research Services

- Located within the Office of Management, ORS provides services and resources to NIH researchers that support the efficient and safe operation of the NIH.



## Scientific Resources (SR)

- Offers services to support the coordination and management of scientific and regulatory activities at NIH.
- Operates in cooperation with the NIH Office of Intramural Research.



NIH Library

Occupational Health and Safety

Radiation Safety

Scientific Equipment Services

Veterinary Resources

Medical Arts



**Forecasting Science** was a collaborative study between the NIH Library and ORS to identify research trends and best position NIH's support services to meet those needs.

One of the key findings of the study highlighted the need for **greater awareness of ORS services** by IRP Scientists.

## **ADDITIONAL KEY FINDINGS:**

- Research is increasingly multi-disciplinary and collaborative
- Bioinformatics expertise and support are crucial
- Need for level playing field for accessing services and technology
- Regulatory expertise and support are critical
- Expanding access to critical technology is vital
- “Science” must be the driving force behind support services

## NIH Library

*Providing access to resources and services to support the information needs of the intramural research community*



## Resources

- The NIH Library provides access to a wide variety of resources to support intramural research and information needs.

**Journals:** over 15,000  
scholarly journals

**eBooks:** 120,000+ scholarly  
eBooks online and fully  
searchable

**Databases:** 200 databases  
including Micromedex,  
UpToDate, PubMed@NIH,  
Scopus, & Web of Science

**Research Tools:** high-  
performance workstations and  
analysis tools



## Resources

- The NIH Library provides access to a wide variety of resources to support intramural research and information needs.

## Services

- The NIH Library delivers a range of services spanning one-on-one consultations and tutorials to multi-hour training on a variety of biomedical research topics.

## SERVICES

[3D Printing](#)

[Bibliometrics](#)

[Bioinformatics Support](#)

[Custom Information Solutions](#)

[Data](#)

[Editing](#)

[Informationist Program](#)

[Systematic Reviews](#)

[Technology Hub](#)

[Training](#)

[Translations](#)





## Bibliometrics and Portfolio Analysis

- Publication analysis services aiding researchers and administrators in understanding and evaluating the citation impact of publications produced by scientists, grant programs, and institutions at NIH and worldwide.

### SERVICE DETAILS

Consultations on designing and using bibliometric analyses

Training on bibliometric theory and techniques

Customized analyses designed to meet specific customer needs

### PUBLICATION ANALYSES INCLUDE

Measuring productivity

Detecting collaboration

Identifying research topics

Assessing citation impact



## Bibliometrics and Portfolio Analysis

- Publication analysis services aiding researchers and administrators in understanding and evaluating the citation impact of publications produced by scientists, grant programs, and institutions at NIH and worldwide.

## Bioinformatics Support

- Provides consultations, training, and resources to further the understanding of the molecular basis of disease.

### SERVICE DETAILS

Support and software to analyze and interpret high-throughput data

Three bioinformatics workstations available for reservation

### SUPPORT INCLUDES

Analysis Tools and Databases

Classroom Training

Consultations

One-on-one tutorials

High-Performance Computing



## Bibliometrics and Portfolio Analysis

- Publication analysis services aiding researchers and administrators in understanding and evaluating the citation impact of publications produced by scientists, grant programs, and institutions at NIH and worldwide.

## Bioinformatics Support

- Provides consultations, training, and resources to help further the understanding of the molecular basis of disease.

## Data Services

- Develops training, tools, and services that support data management throughout the entire data life-cycle.

### SERVICE DETAILS

The Data Sciences workstation offers a suite of tools for data analysis, processing, and visualization.

### TRAINING AND CLASSES

Data management

Data visualization

Data analysis

R and RStudio

Statistical software support



## **Ask A Question:**

<https://www.nihlibrary.nih.gov/services/ask-question>

## **NIH Library web site:**

<https://www.nihlibrary.nih.gov>

## **Request a Consultation or Tutorial:**

<https://www.nihlibrary.nih.gov/services/consultations-tutorials>

## **NIH Library Information Desk:**

(301) 496-1080

## **Find Your Librarian:**

<https://www.nihlibrary.nih.gov/services/find-your-librarian>



## Division of Occupational Health and Safety

*Ensuring the highest practical degree of safety and health for employees in all activities of the NIH*



## Biological Safety Cabinet (BSC) Stocking Program

- Provides many services regarding certification, maintenance, repair, and decontamination of biological safety cabinets.

### PROGRAM DETAILS

#### Class II, Type A2 BSCs

- 4 foot or 6 foot BSCs available within 3-4 days following lab clearance by DOHS
- 3 foot and 5 foot BSCs will take 6-8 weeks following lab clearance by DOHS



## Biological Safety Cabinet (BSC) Stocking Program

- Provides many services regarding certification, maintenance, repair, and decontamination of biological safety cabinets.

## Integrated Pest Management

- Provides long-term pest management solutions so that the research, lab environment, and staff are not compromised.

## INTEGRATED PEST MANAGEMENT SERVICES

Traps

Visual Inspections

Staff interviews



## Integrated Pest Management

- Provides long-term pest control so that the research, lab environment, and staff are not compromised.

## Ergonomic Evaluations

- Reduces musculoskeletal disorders through ergonomic evaluations, including common lab-related techniques.

### COMMON ERGONOMIC EVALUATIONS

Repetitive pipetting

Microscopy

Working at biosafety cabinets

Working at lab workbenches

Using a microtome

Micro-manipulation techniques





## **Biological Safety Cabinet Stocking Program**

Mark Gibson

Biological Safety Cabinet Stocking Program

Manager gibsomar@ors.od.nih.gov

(301) 496-3457

## **Ergonomic Evaluations**

Daveta Bailey

Ergonomics Program Manager

daveta.bailey@nih.gov

(301) 451-5992

## **Integrated Pest Management**

Trevor Lubbert

Integrated Pest Management Program Manager

lubberrt@ors.od.nih.gov

(301) 451-1484

## **DOHS web site:**

<https://www.ors.od.nih.gov/sr/dohs>





## **Division of Radiation Safety (DRS)**

*Specialists in radiation safety, regulatory compliance, and risk management for biomedical, clinical, and translational research efforts*

## Training

- Conducts and leads a comprehensive program of radiation safety classes for all NIH radiation workers and ancillary staff.
- Register for [initial training](#) or [refresher training](#) on the DRS website.

## TRAINING TOPICS

Radiation Safety for Authorized Users

Radiation Safety in the Laboratory

Radiation Safety for Irradiator Users

Radiation Safety Orientation

Radiation Safety for Clinical Center Nurses

Patient Care and Animal Personnel X-ray



## Training

- Conducts and leads a comprehensive program of radiation safety classes for all NIH radiation workers and ancillary staff.

## Policies and Procedures

- Provides up-to-date guidance on a wide range of radiation safety policies and procedures.
- More information on [policies](#) available online.

## GUIDANCE AVAILABLE

Radiation Safety Protocols

Ordering/Receiving/Shipping  
Radioactive Materials

General Laboratory  
Practices

Equipment Clearances

Contamination Monitoring

Exposure Monitoring

Radioactive Waste  
Management



## Contamination Surveys

- Monthly laboratory contamination surveys are mandatory in all modules where radioactive material may be used or stored.
- Contact DRS to hire an approved contractor to perform this service if desired.



## Contamination Surveys

- Monthly laboratory contamination surveys are mandatory in all modules where radioactive material may be used or stored.

## Shipping Services

- DRS staff are DOT-trained to perform shipping services when radioactive materials are sent off site.
- Contact DRS to arrange for radioactive materials shipping services.



## Radiation Safety Training

Laurenti K. Ngutter  
Training Coordinator  
drstraining@mail.nih.gov  
(301) 496-2255

## Radiation Safety Operations

Laurenti K. Ngutter  
Chief, Radiation Safety Operations Branch  
ngutterl@mail.nih.gov  
(301) 594-0958

## Laboratory Contamination Surveys

Curtis DeBraux  
Project Manager  
(301) 496-5774

## Shipping Radioactive Materials

Andrew Cabot  
Shipping Coordinator  
(301) 496-3277

## DRS website:

<https://drs.ors.od.nih.gov>



## **Division of Scientific Equipment and Instrumentation Services (DSEIS)**

*Your on-campus source for lab equipment – purchase,  
rent and maintain*





## Equipment sales program

- NIH Intramural researchers can purchase commonly used lab equipment through the NIH Business System (NBS) Internal Requisition module.

### INVENTORY

Freezers

Thermal cyclers (PCRs)

Centrifuges

Incubators

Microscopes

Spectrophotometers

Microplate readers



## Equipment sales program

- NIH Intramural researchers can purchase commonly used lab equipment through the NIH Business System (NBS) Internal Requisition module.

## Advantages

- Reduces administrative burden for procurement and acquisitions.
- Rates are pre-negotiated, usually lower than GSA.

## INVENTORY

Freezers

Thermal cyclers (PCRs)

Centrifuges

Incubators

Microscopes

Spectrophotometers

Microplate readers



## Equipment rental program

- Rents over 400 pieces of equipment with options for short-term rental or rent-to-buy.

### INVENTORY

Freezers

Thermal cyclers (PCRs)

Centrifuges

Incubators

Microscopes

Spectrophotometers

Microplate readers



## Equipment rental program

- Rents over 400 pieces of equipment with options for short-term rental or rent-to-buy.

## Advantages

- Helps reduce capital investments, property transactions, and procurement efforts and time.

## INVENTORY

Freezers

Thermal cyclers (PCRs)

Centrifuges

Incubators

Microscopes

Spectrophotometers

Microplate readers



## Equipment rental program

- Rents over 400 pieces of equipment with options for short-term rental or rent-to-buy.

## Advantages

- Helps reduce capital investments, property transactions, and procurement efforts and time.

## NIH FreeStuff Program

- Web-based resource for NIH personnel to exchange equipment and supplies.
- <http://stuff.nih.gov>



## Laboratory Equipment Maintenance & Repair

- Onsite technicians offer comprehensive, cost-effective maintenance services.
- Performs calibrations and inspections, including scheduled preventive maintenance.
- Provides service on an as-needed basis or under a Full-Service and Lab-Wide Maintenance Agreement.

### **MOST FREQUENT MAINTENANCE REQUESTS**

Freezers

Centrifuges

PCRs

Incubators

Water baths

Shakers/mixers

Balances

Microscopes

Printers



## **DSEIS web site:**

<http://dseis.od.nih.gov>

## **Rental and Sales**

Anju Vergheese

Branch Chief

(301) 496-9748

[rental@ors.od.nih.gov](mailto:rental@ors.od.nih.gov)

## **NIH FreeStuff Program:**

<http://stuff.nih.gov>

## **Laboratory Equipment Maintenance and Repair**

Jerry Tyus

Branch Chief

(301) 496-4131

[DSEIS\\_repairs@nih.gov](mailto:DSEIS_repairs@nih.gov)



## **Division of Veterinary Resources**

*Excellence in animal care and specialized research services to support the NIH intramural research mission*





## Facilities Management

- Manages a major part of all animal facility space at the NIH, with capabilities in conventional, SPF and hazard containment environments.
- Can accommodate virtually any animal species required in biomedical research.

## FACILITIES MANAGEMENT

Animal holding

Animal procurement

Animal transportation

Laboratory Animal  
Research Contract (LARC)

Cagewash services



## Facilities Management

- Manages a major part of all animal facility space at the NIH. Can accommodate virtually any animal species.

## Veterinary Medicine

- Provides daily clinical oversight to facilities.
- Provides surgical and technical support to NIH researchers.

## VETERINARY MEDICINE

Animal imports & exports

Non-human primate  
quarantine

Pharmacy

Surgery & Radiology

Veterinary care

Nutrition



# Division of Veterinary Resources (DVR)

## Facilities Management

- Manages a major part of all animal facility space at the NIH.

## Veterinary Medicine

- Provides clinical, surgical, and technical support.

## Animal Behavior and Welfare

- Addresses the physical and psychological well being of all animal species.

## ANIMAL BEHAVIOR AND WELFARE

Social housing

Positive reinforcement training

Behavioral assessment

Environmental enrichment



## Animal Behavior and Welfare

- Addresses the well being of all animal species.

## Diagnostic and Research Services

- Provides, manages and evaluates a wide variety of scientific services in veterinary pathology and clinical and molecular microbiology.
- Coordinates health screening for NIH animal facilities
- Contact DVR Diagnostic and Research Services to schedule a consultation.

## DIAGNOSTIC AND RESEARCH SERVICES

Bacteriology

Health surveillance

Molecular microbiology

Mouse phenotyping

Pathology

Electron microscopy



## Facilities Management

Valerie Harrington

Facility Management Branch Chief

(301) 443-7110

[harringv@mail.nih.gov](mailto:harringv@mail.nih.gov)

## Veterinary Medicine Branch

Dr. Garry Linton

Veterinary Medicine Branch Chief

(301) 402-0123

[lintoncg@mail.nih.gov](mailto:lintoncg@mail.nih.gov)

## Animal Behavior and Welfare

Dr. Kelly Rice

Program Coordinator (Acting)

(301) 594-3778

[kelly.rice@nih.gov](mailto:kelly.rice@nih.gov)

## Diagnostic and Research Services

Dr. Michael A. Eckhaus

Chief, Diagnostic & Research Services Branch

Chief, Pathology Service

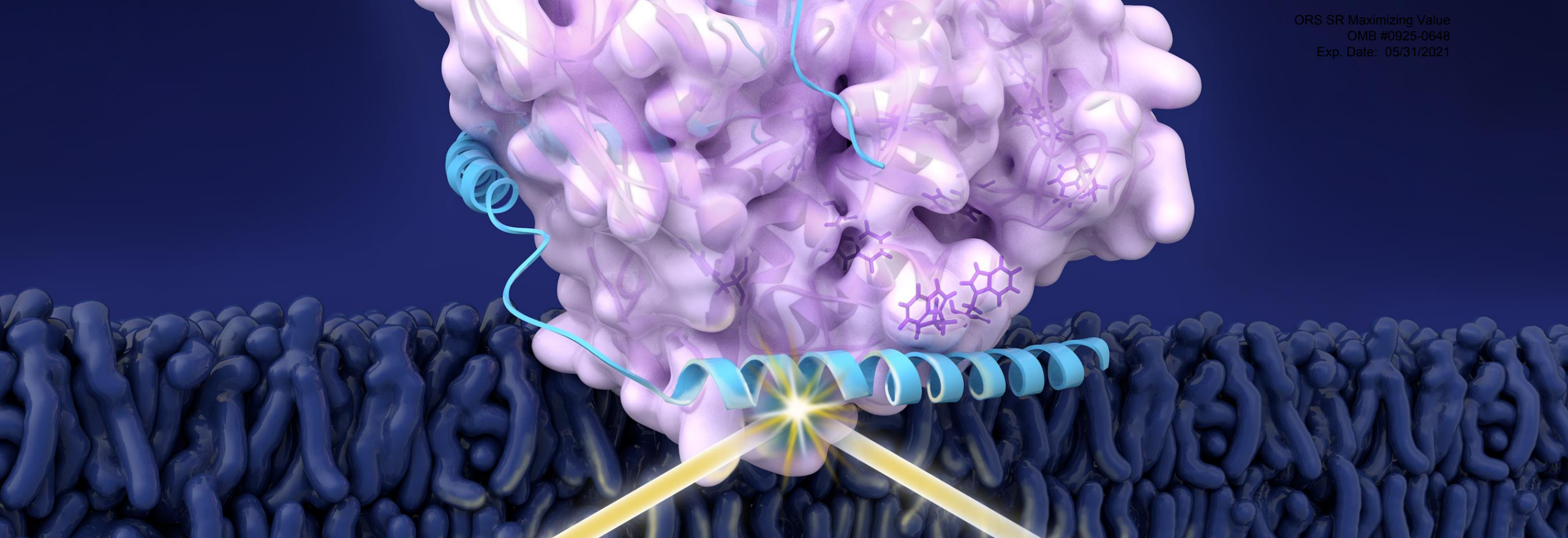
(301) 496-4465

[eckhausm@vrp.ncrr.nih.gov](mailto:eckhausm@vrp.ncrr.nih.gov)

## DVR web site:

<https://www.ors.od.nih.gov/sr/dvr>





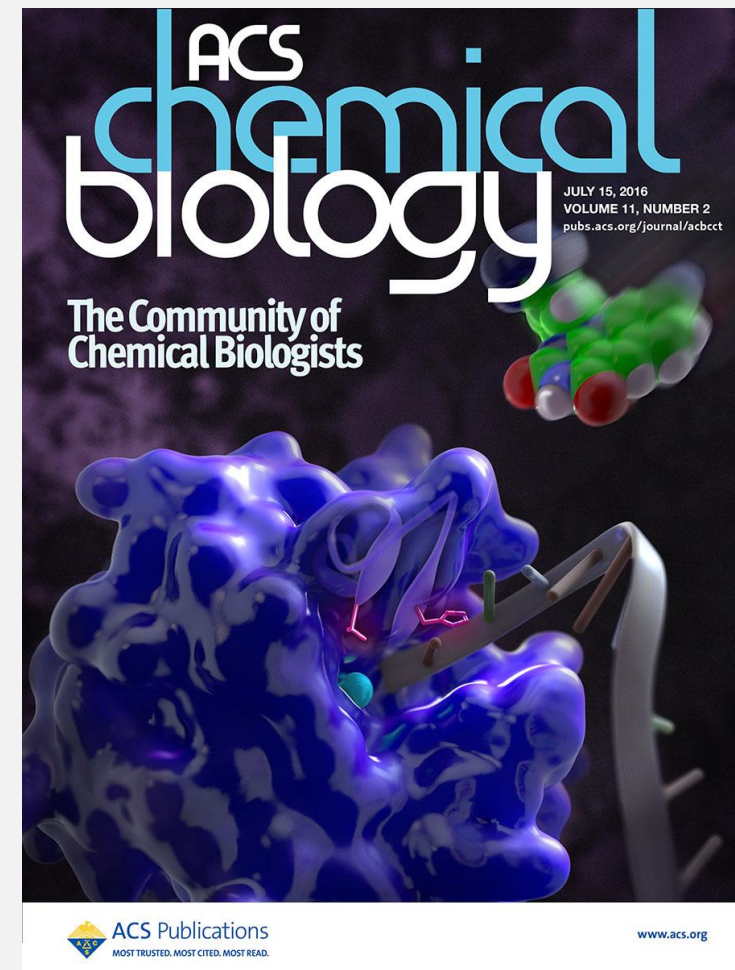
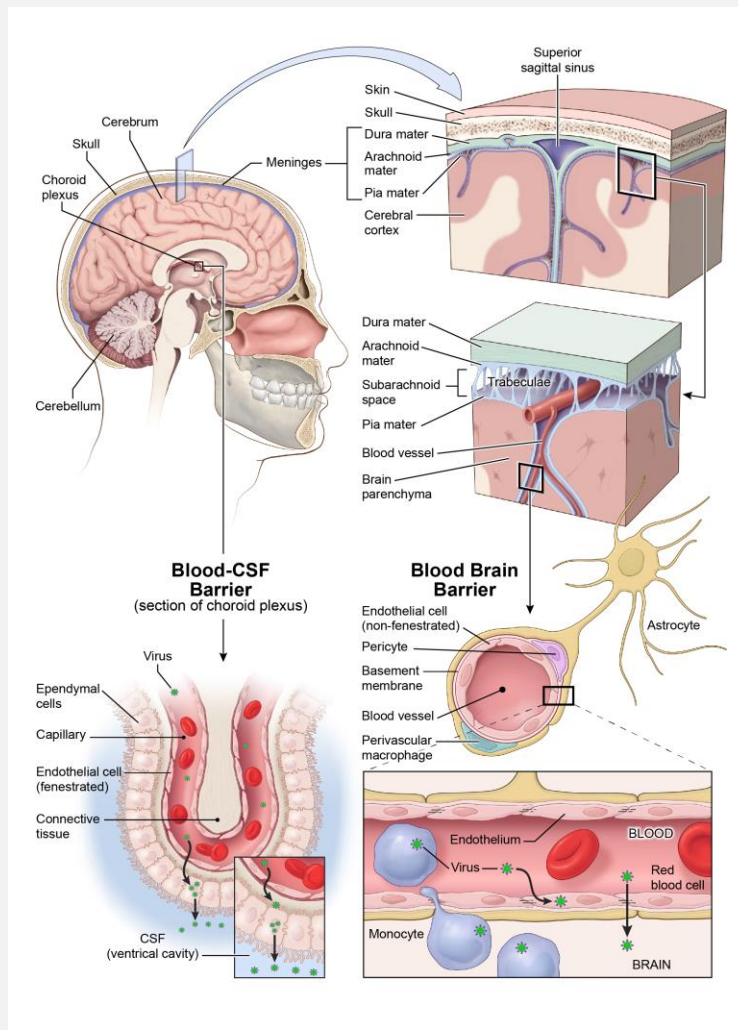
## Medical Arts Branch

*NIH's in-house creative studio offering services  
in medical illustration, visual communication,  
and production*



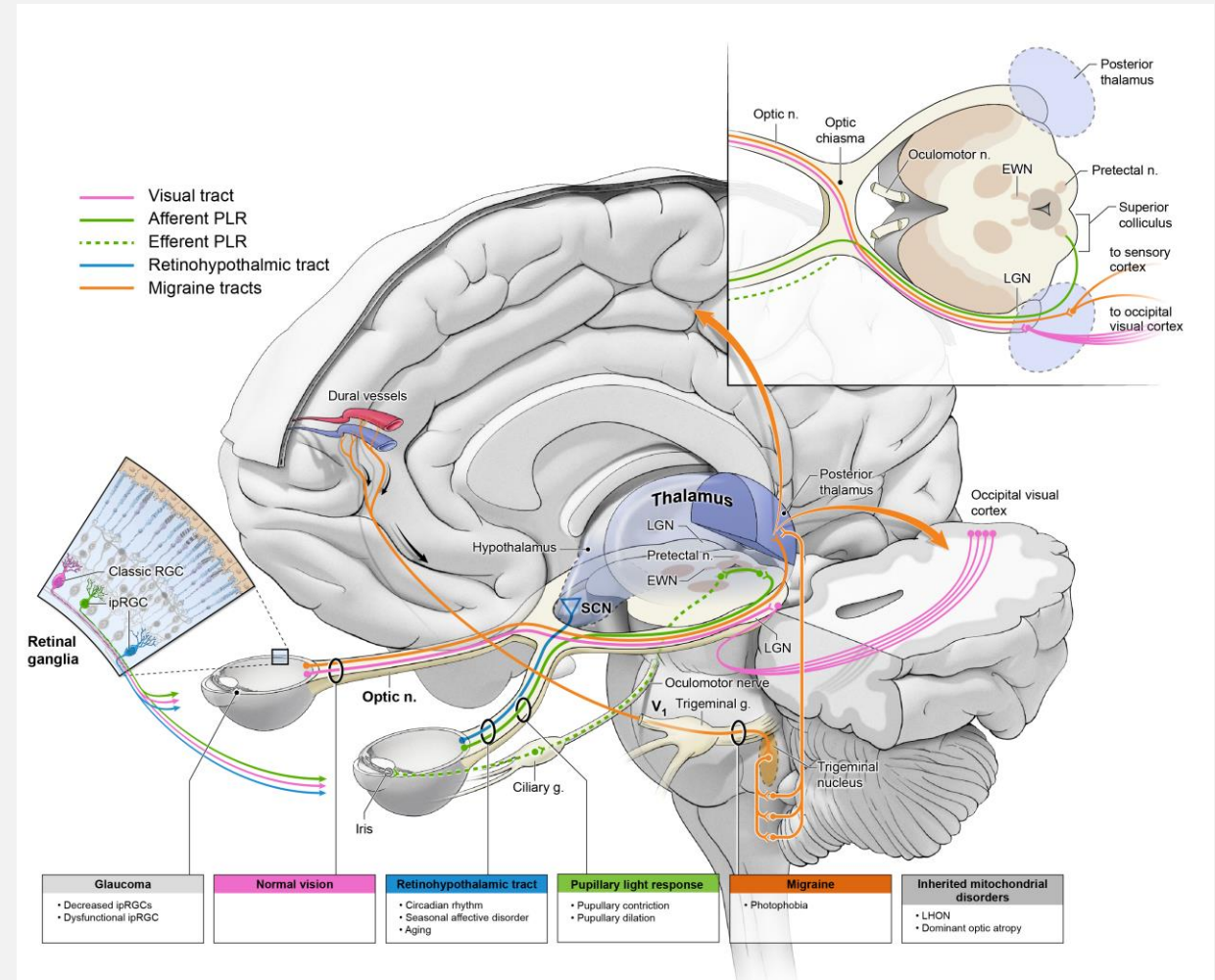
## Medical Illustration

- Scientifically trained biomedical illustrators



## Medical Illustration

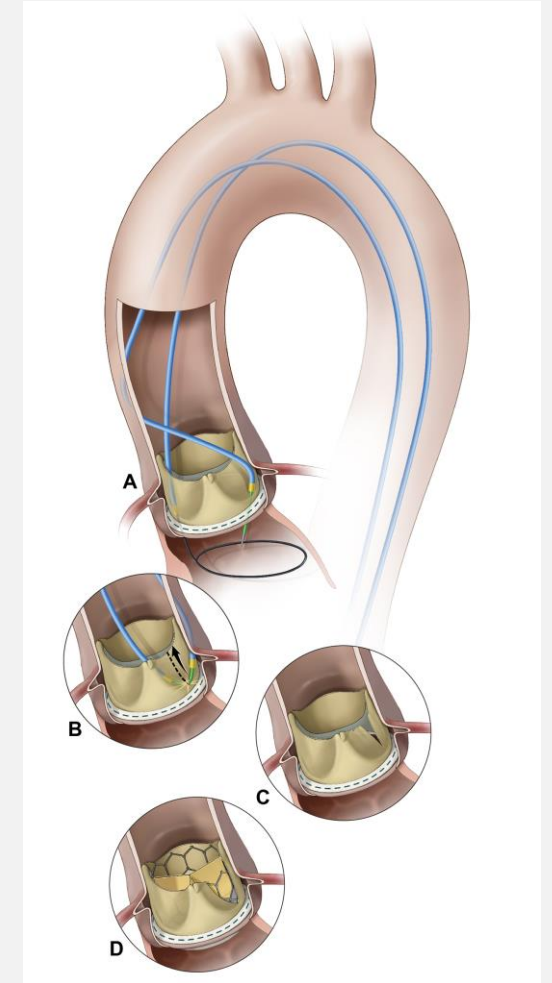
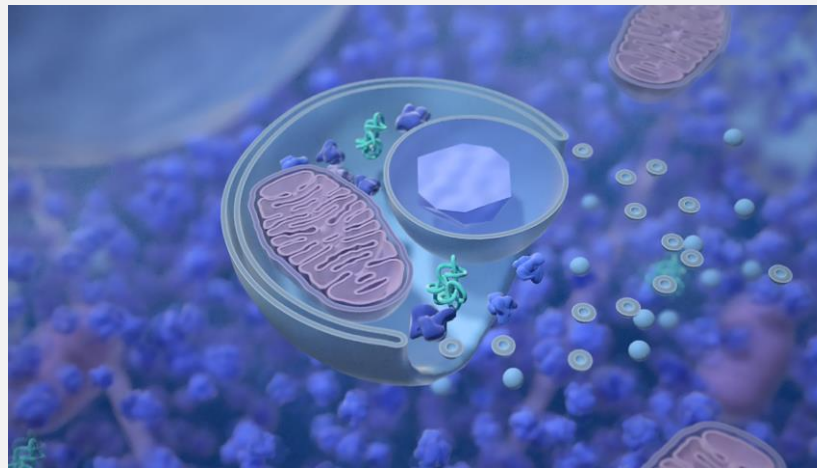
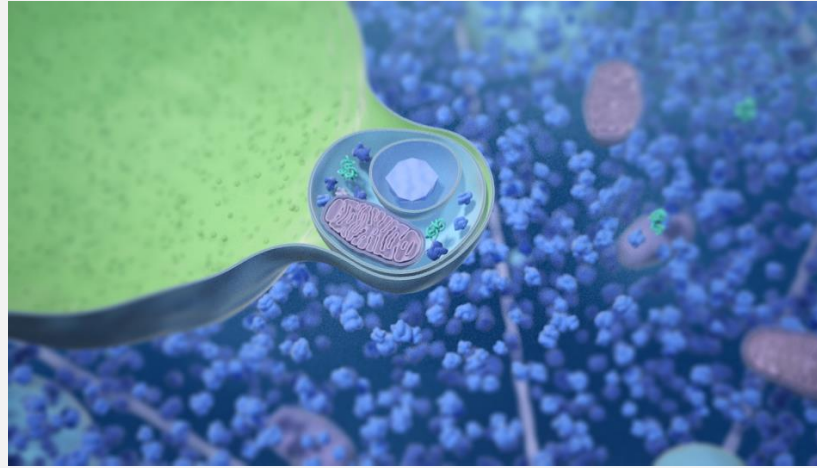
- Scientifically trained biomedical illustrators
- Close collaboration with researchers to create accurate, compelling imagery that function as key components of journal manuscripts and presentations





## Medical Illustration Capabilities

- Manuscript figures
- Infographics
- Animations
- Journal covers



## Graphic Design

- Professionally trained staff
- NIH expertise

### IMMUNOHEMATOLOGY & BLOOD TRANSFUSION

36TH ANNUAL SYMPOSIUM

**Description:**  
This program is designed to provide attendees with practical information about recent developments, current practices, controversies and laboratory management issues relative to transfusion medicine.

**Audience:**  
This program will be of interest to all healthcare providers who participate in the collection, production, transfusion and monitoring of blood products.

**SEPT 28, 2017**  
THURSDAY, 8:25 AM - 4:00 PM

NATIONAL INSTITUTES OF HEALTH  
BUILDING 10, MASUR AUDITORIUM  
CLINICAL CENTER

NIH National Institutes of Health  
Department of Transfusion Medicine  
NIH CLINICAL CENTER 60 YEARS OF COURAGE AND CURES  
NO REGISTRATION FEE  
REGISTER [www.cc.nih.gov/dtm](http://www.cc.nih.gov/dtm)  
SIGN LANGUAGE INTERPRETATION WILL BE PROVIDED. FOR MORE INFORMATION OR ACCOMMODATION CALL 301.402.8180  
NATIONAL INSTITUTES OF HEALTH CLINICAL CENTER  
DEPARTMENT OF TRANSFUSION MEDICINE AND THE AMERICAN RED CROSS

NATIONAL LIBRARY OF MEDICINE  
BIOMEDICAL INFORMATICS  
AND DATA SCIENCE LECTURE

Translating from  
Chemistry to Clinic with  
**deep learning**

**S. Joshua Swamidass, MD, PhD**  
Wednesday, March 7, 2018, 2:00-3:00 pm  
Natcher Conference Center (Building 45), Room 1E12

Sponsored by:  
Dr. Valerie Poiranne, Associate Director for Extramural Programs  
Extramural Programs Division, National Library of Medicine

Event Contact:  
Janet Yu, PhD, Division of Extramural Programs  
National Library of Medicine, NIH  
301.594.4882 - [Janet.Yu@nih.gov](mailto:Janet.Yu@nih.gov)



## Graphic Design Capabilities

- Scientific poster design
- Event poster design
- Publication and report design
- Logos and brand systems
- User interface design
- Exhibit design and environmental graphic design (large-format graphics/artwork)



## Production

- Scientific poster printing on paper or cloth
- Scanning, mounting, framing, high-resolution photo prints, more



**Medical Arts Customer  
Service (M-F, 8:30-5)**  
(301) 496-3221

**Web site:**  
<http://medarts.nih.gov>

**Illustration**  
Alan Hoofring  
Lead Medical Illustrator  
(301) 827-8414  
[MedicalIllustration@mail.nih.gov](mailto:MedicalIllustration@mail.nih.gov)

**Design**  
Martha Blalock  
Creative Director  
(301) 827-8401  
[design@mail.nih.gov](mailto:design@mail.nih.gov)

**Production**  
India Taylor  
Production Lead  
(301) 827-8427  
[ExpressServices@mail.nih.gov](mailto:ExpressServices@mail.nih.gov)






## **CREx: The Collaborative Research Exchange for the NIH Intramural Research Program**


*[NIH.scientist.com](http://NIH.scientist.com)*

WELCOME TO CREX, THE COLLABORATIVE RESEARCH EXCHANGE FOR THE NIH INTRAMURAL RESEARCH PROGRAM

Welcome back, **Bonnie Hamalainen**.



WELCOME,  
**First Lastname, PhD**  
Add a job title

 Your profile is **60%** complete.  
Next: **Personal Details**.





Your recent requests will show up here.

START A NEW REQUEST

NEXT


Your favorites will show up here. [Select favorites >](#)


**QUICK LINKS**


-  **NIH Intramural Research Program (IRP) Cores** >  
Comprehensive list of core facilities available through the NIH Intramural Research Program (IRP).
-  **NIH Collaborative Resources** >  
Resources, technologies and expertise offered by NIH Institute and Center research labs, facilities, and repositories through collaborations.
-  **Shared/Walk-Up Instrumentation and Software Tools** >  
Access full suite of scientific technologies and equipment offered at core facilities within the NIH. Instrumentation includes applications to cell isolation, flow cytometry, genomics, and microscopy.
-  **NIH Biowulf Computational Cluster** >  
Access full suite of scientific applications and databases, including tools for sequence analysis, linkage analysis, phylogenetic analysis, microarray analysis, gene regulation and pathways, computational chemistry, molecular modeling, structural biology, mathematical analysis, proteomics, image analysis, molecular graphics, program development, and scientific databases.



WELCOME TO CREX, THE COLLABORATIVE RESEARCH EXCHANGE FOR THE NIH INTRAMURAL RESEARCH PROGRAM



WELCOME,  
**First Lastname, PhD**  
Add a job title 

 Your profile is **60%** complete.  
Next: **Personal Details.**


Your recent requests will show up here.

START A NEW REQUEST 


Enter a title for your request... 

Your favorites will show up here. Select favorites >

**QUICK LINKS**

 **NIH Intramural Research Program (IRP) Cores** >  
Comprehensive list of core facilities available through the NIH Intramural Research Program (IRP).

**CREx** is an NIH exclusive online searchable platform where IRP researchers can locate resources, services, and external vendor information to support their work at NIH.

 **NIH Biowulf Computational Cluster** >  
Access full suite of scientific applications and databases, including tools for sequence analysis, linkage analysis, phylogenetic analysis, microarray analysis, gene regulation and pathways, computational chemistry, molecular modeling, structural biology, mathematical analysis, proteomics, image analysis, molecular graphics, program development, and scientific databases.





**WELCOME TO CREX, THE COLLABORATIVE RESEARCH EXCHANGE FOR THE NIH INTRAMURAL RESEARCH PROGRAM**

HOME / NIH IRP CORES

# NIH IRP Cores

## Research Categories

- Animal Resources
- Bioinformatics, Biostatistics and Computing
- Cell Banking and Aliquoting
- Chemistry, Biophysics and Structural Biology
- Clinical Research Support
- Flow Cytometry
- Genetics and Genomics
- Imaging and Microscopy
- Lab Equipment & Fabrication Resources
- Pharmacology
- Proteins and Proteomics
- Scientific Graphics
- Single Cell Analysis
- Stem Cell Biology and Technology

WELCOME TO CREX, THE COLLABORATIVE RESEARCH EXCHANGE FOR THE NIH INTRAMURAL RESEARCH PROGRAM

HOME / NIH IRP CORES

# NIH IRP Cores

## Research Categories

- Animal Resources
- Bioinformatics, Biostatistics and Computing
- Cell Banking and Aliquoting
- Chemistry, Biophysics and Structural Biology
- Clinical Research Support

Flow Cytometry

Genetics and Genomics  
Microscopy  
Fabrication Resources

Proteins and Proteomics

Scientific Graphics  
Single Cell Analysis  
Stem Cell Biology and Technology

**IRP scientists** can easily engage with innovative resources and technologies using key word searches to locate services, tools, and equipment across the NIH.

WELCOME TO CREX, THE COLLABORATIVE RESEARCH EXCHANGE FOR THE NIH INTRAMURAL RESEARCH PROGRAM

HOME / ORS CORES

# ORS Cores

Services and expertise available to all NIH investigators.

ORS Core

### Division of Scientific Equipment and Instrumentation Services (DSEIS)

DSEIS provides laboratory equipment sales, rental, repairs, and maintenance to IRP scientists.

ORS Core

### Division of Veterinary Resources (DVR)

DVR is the central animal care program that provides research collaboration through housing, veterinary care, technical support, animal transportation/procurement, surgery/ICU/pharmacy, diagnostics (pathology), mouse phenotyping, behavior consultation, animal training, and nutrition consultation.

ORS Core

### Division of Veterinary Resources (DVR) - Animal Surgery

For over 40 years, DVR's Animal Surgery has supported large animal research and clinical care. Our surgeons provide outstanding and highly specialized large animal (rabbits, ungulates, etc.) research support in a state of the art surgical suite. Specialty support includes surgical expertise, surgical and technical support, animal model development, and investigator training.

ORS Core

### Division of Veterinary Resources (DVR) - Pathology Service

The Pathology Service within DVR provides gross and histopathologic evaluation of any species of laboratory animals used in the NIH IRP due to morbidity, mortality or unexpected findings. In addition, mouse phenotyping and transmission electron microscopy services are available.

WELCOME TO CREX, THE COLLABORATIVE RESEARCH EXCHANGE FOR THE NIH INTRAMURAL RESEARCH PROGRAM

HOME / ORS CORES

# ORS Cores

Services and expertise available to all NIH investigators.

ORS Core

Division of Scientific Equipment and Instrumentation Services (DSEIS)

DSEIS provides laboratory equipment sales, rental, repairs, and maintenance to IRP scientists.

ORS Core

Division of Veterinary Resources (DVR)

DVR is the central animal care program that provides a wide range of services including housing, veterinary care, animal transportation, procurement, surgery/ICU, pathology, mouse phenotyping, behavior consultation, animal training, and nutrition consultation.

ORS Core

Division of Veterinary Resources (DVR) - Animal Surgery

Animal surgery has supported large animal surgeons provide outstanding and state of the art surgical suite. Specialty support includes surgical expertise, surgical and technical support, animal model development, and investigator training.

ORS Core

Division of Veterinary Resources (DVR) - Pathology Service

provides gross and histopathologic animals used in the NIH IRP due to mortality or unexpected findings. In addition, mouse phenotyping and transmission electron microscopy services are available.

Smarter sourcing from external vendors and a built in customer review module allows CREx users to benefit from their NIH colleagues' expertise.

## **Dr. Lakshmi Darbha**

lakshmi.darbha@nih.gov  
(240) 760-6061

## **Christin Olsen**

christin@scientist.com

## **CREx website**

<https://nih.scientist.com>

## **CREx Office Hours @ NIH Library**

Tuesdays, 11:00 am – 1:00 pm

Wednesdays, 11:00 am – 1:00 pm



# Office of Research Services: *Supporting Research, Maximizing Value*