



Chickens and Eggs

ISSN: 1948-9064

Released August 23, 2021, by the National Agricultural Statistics Service (NASS), Agricultural Statistics Board, United States Department of Agriculture (USDA).

July Egg Production Up 1 Percent

United States egg production totaled 9.39 billion during July 2021, up 1 percent from last year. Production included 8.10 billion table eggs, and 1.28 billion hatching eggs, of which 1.21 billion were broiler-type and 74.7 million were egg-type. The average number of layers during July 2021 totaled 385 million, up 1 percent from last year. July egg production per 100 layers was 2,439 eggs, down slightly from July 2020.

Total layers in the United States on August 1, 2021 totaled 385 million, up 1 percent from last year. The 385 million layers consisted of 319 million layers producing table or market type eggs, 62.8 million layers producing broiler-type hatching eggs, and 2.88 million layers producing egg-type hatching eggs. Rate of lay per day on August 1, 2021, averaged 78.8 eggs per 100 layers, down 1 percent from August 1, 2020.

Egg-Type Chicks Hatched Up 9 Percent

Egg-type chicks hatched during July 2021 totaled 50.4 million, up 9 percent from July 2020. Eggs in incubators totaled 44.0 million on August 1, 2021, down 5 percent from a year ago.

Domestic placements of egg-type pullet chicks for future hatchery supply flocks by leading breeders totaled 199 thousand during July 2021, down 32 percent from July 2020.

Broiler-Type Chicks Hatched Down 1 Percent

Broiler-type chicks hatched during July 2021 totaled 844 million, down 1 percent from July 2020. Eggs in incubators totaled 718 million on August 1, 2021, up 4 percent from a year ago.

Leading breeders placed 8.62 million broiler-type pullet chicks for future domestic hatchery supply flocks during July 2021, up 5 percent from July 2020.

This page intentionally left blank.

Contents

Average Layers During the Month – United States: 2020-2021.....	4
Egg Production During the Month by Type – United States: 2020-2021	4
Egg Production During the Month in Dozens by Type – United States: 2020-2021	4
Average Layers During the Month – United States	5
Total Egg Production During the Month – United States	5
Layers on Hand and Eggs Produced by Type and Molt – United States: June-July 2020 and 2021	6
Layers on Hand and Eggs Produced by Type and Molt – United States: July-August 2020 and 2021	7
Layers on Hand and Eggs Produced – States and United States: During June 2020 and 2021	8
Layers on Hand and Eggs Produced – States and United States: During July 2020 and 2021	9
Egg Production by Type – States and United States: June 2020 and 2021	10
Egg Production by Type – States and United States: July 2020 and 2021	11
Egg Production in Dozens by Type – States and United States: June 2020 and 2021	12
Egg Production in Dozens by Type – States and United States: July 2020 and 2021	13
Total Layers Molted First Day of the Month by Month – United States: 2020-2021.....	14
Total Layers Molted First Day of the Month – States and United States: July 1 and August 1, 2020-2021	14
Hatchery Production – United States: 2020 and 2021	15
Egg-Type Eggs in Incubators on the First of the Month – United States: 2020-2021	16
Egg-Type Chicks Hatched by Month – United States: 2020-2021	16
Intended Placements of Egg-Type Pullet Chicks for Hatchery Supply Flocks by Month and Total – United States: 2020-2022.....	17
Broiler-Type Eggs in Incubators on the First of the Month – United States: 2020-2021	17
Broiler-Type Chicks Hatched – States and United States: July 2020 and 2021	18
Broiler-Type Chicks Hatched by Month – United States: 2020-2021	18
Intended Placements of Broiler-Type Pullet Chicks for Hatchery Supply Flocks by Month and Total: 2020-2022.....	19
Terms and Definitions of Chickens and Eggs Estimates	19
Statistical Methodology	20
Information Contacts	22

Average Layers During the Month – United States: 2020-2021

[Blank data cells indicate estimation period has not yet begun]

Month	2020		2021	
	(1,000 layers)		(1,000 layers)	
December ¹		403,445		391,780
January		401,419		393,284
February		396,916		393,963
March		395,613		393,176
April		392,770		390,020
May		387,045		385,575
June		383,152		384,240
July		381,014		384,964
August		382,184		
September		384,655		
October		386,660		
November		389,355		

¹ December previous year.

Egg Production During the Month by Type – United States: 2020-2021

[Blank data cells indicate estimation period has not yet begun]

Month	Total eggs		Table eggs		Hatching eggs	
	2020	2021	2020	2021	2020	2021
	(million eggs)	(million eggs)	(million eggs)	(million eggs)	(million eggs)	(million eggs)
December ¹	9,790.2	9,610.3	8,583.4	8,356.4	1,206.8	1,253.9
January	9,690.4	9,530.9	8,470.3	8,260.7	1,220.1	1,270.2
February	8,946.0	8,595.5	7,793.0	7,439.5	1,153.0	1,156.0
March	9,538.5	9,543.1	8,299.5	8,248.1	1,239.0	1,295.0
April	9,096.4	9,209.8	7,894.5	7,942.7	1,201.9	1,267.1
May	9,120.9	9,383.3	7,883.3	8,065.5	1,237.6	1,317.8
June	8,831.8	9,046.0	7,625.8	7,780.8	1,206.0	1,265.2
July	9,317.2	9,388.5	8,063.5	8,103.7	1,253.7	1,284.8
August	9,352.5		8,096.8		1,255.7	
September	9,057.2		7,838.1		1,219.1	
October	9,505.2		8,250.4		1,254.8	
November	9,327.0		8,119.4		1,207.6	

¹ December previous year.

Egg Production During the Month in Dozens by Type – United States: 2020-2021

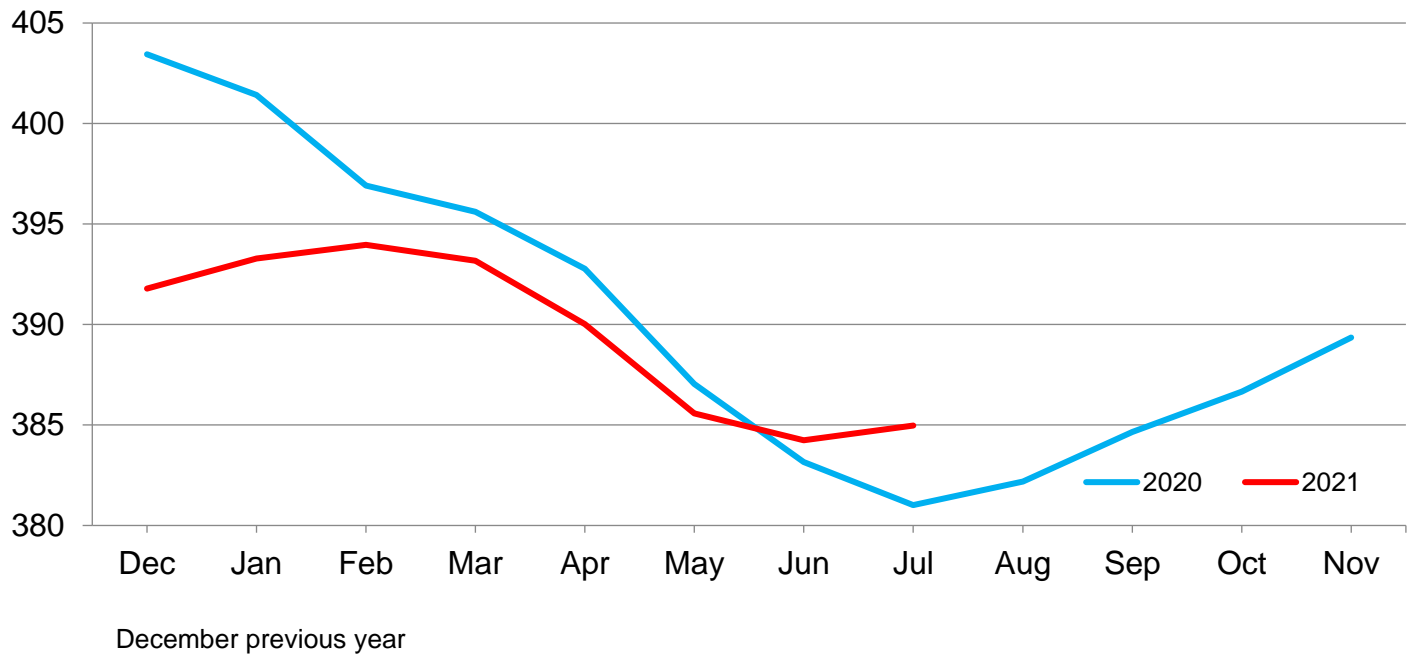
[Blank data cells indicate estimation period has not yet begun]

Month	Total eggs		Table eggs		Hatching eggs	
	2020	2021	2020	2021	2020	2021
	(1,000 dozen eggs)	(1,000 dozen eggs)	(1,000 dozen eggs)	(1,000 dozen eggs)	(1,000 dozen eggs)	(1,000 dozen eggs)
December ¹	815,849.7	800,858.2	715,283.2	696,366.6	100,566.5	104,491.6
January	807,533.2	794,241.9	705,858.4	688,391.7	101,674.8	105,850.2
February	745,499.5	716,292.5	649,416.6	619,959.1	96,082.9	96,333.4
March	794,875.2	795,258.6	691,625.0	687,341.9	103,250.2	107,916.7
April	758,032.8	767,483.9	657,874.6	661,891.7	100,158.2	105,592.2
May	760,074.7	781,941.5	656,941.5	672,124.7	103,133.2	109,816.8
June	735,983.1	753,833.5	635,483.2	648,400.1	100,499.9	105,433.4
July	776,433.5	782,375.1	671,958.2	675,308.6	104,475.3	107,066.5
August	779,375.1		674,733.2		104,641.9	
September	754,767.0		653,175.2		101,591.8	
October	792,100.1		687,533.5		104,566.6	
November	777,250.0		676,616.6		100,633.4	

¹ December previous year.

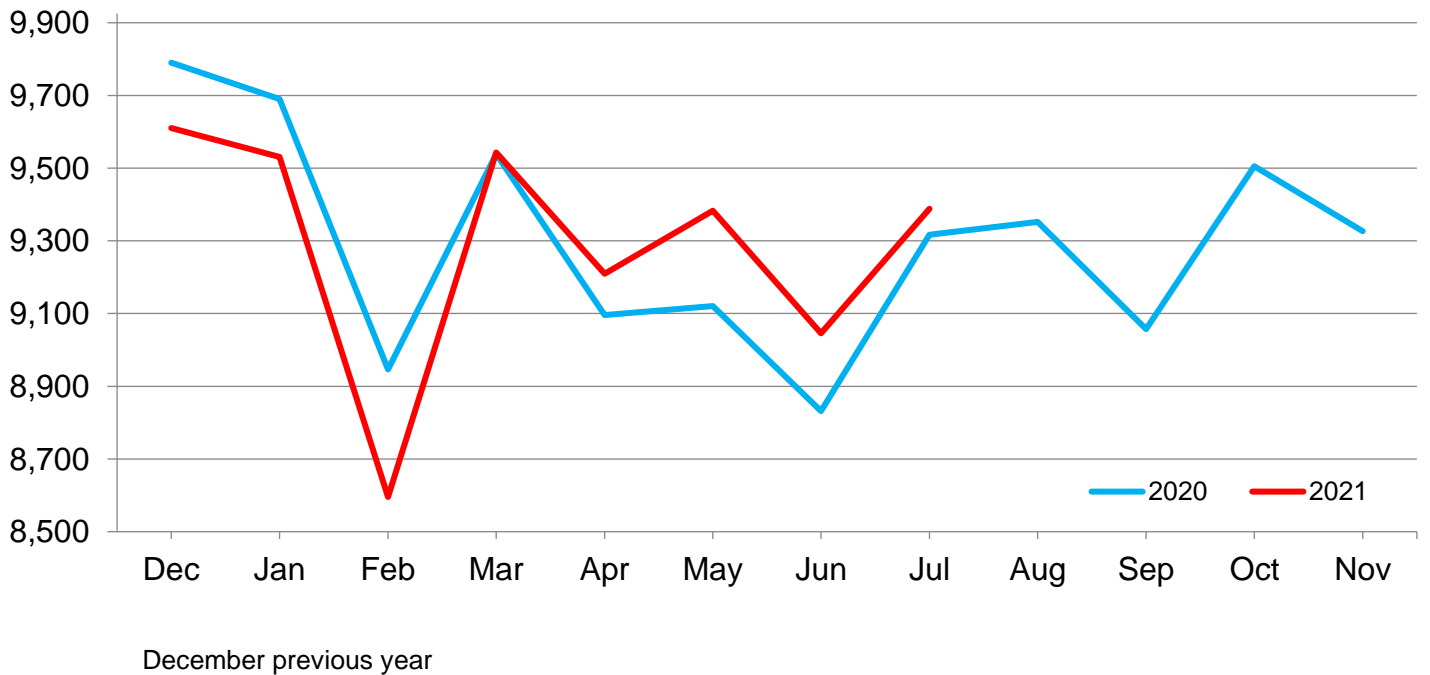
Average Layers During the Month – United States

Million layers



Total Egg Production During the Month – United States

Million eggs



Layers on Hand and Eggs Produced by Type and Molt – United States: June-July 2020 and 2021

Item	2020	2021	2021 as percent of 2020
Layers during June			
Total layers 1,000	383,152	384,240	100
Table egg type 1,000	318,969	317,574	100
Hatching egg type 1,000	64,183	66,666	104
Broiler-type hatching 1,000	60,963	63,643	104
Egg-type hatching 1,000	3,220	3,023	94
Eggs per 100 layers during June			
Total layers number	2,305	2,354	102
Table egg type number	2,391	2,450	102
Hatching egg type number	1,879	1,898	101
Broiler-type hatching number	1,847	1,868	101
Egg-type hatching number	2,491	2,534	102
Eggs produced during June			
Total layers million	8,831.8	9,046.0	102
Table egg type million	7,625.8	7,780.8	102
Hatching egg type million	1,206.0	1,265.2	105
Broiler-type hatching million	1,125.8	1,188.6	106
Egg-type hatching million	80.2	76.6	96
Eggs produced during June			
Total layers 1,000 dozen	735,983.1	753,833.5	102
Table egg type 1,000 dozen	635,483.2	648,400.1	102
Hatching egg type 1,000 dozen	100,499.9	105,433.4	105
Broiler-type hatching 1,000 dozen	93,816.6	99,050.1	106
Egg-type hatching 1,000 dozen	6,683.3	6,383.3	96
Layers on July 1			
Total layers 1,000	381,290	384,889	101
Table egg type 1,000	316,927	318,804	101
Hatching egg type 1,000	64,363	66,085	103
Broiler-type hatching 1,000	61,088	63,246	104
Egg-type hatching 1,000	3,275	2,839	87
Eggs per 100 layers on July 1			
Total layers number	77.7	78.5	101
Table egg type number	80.7	81.8	101
Hatching egg type number	63.1	62.9	100
Broiler-type hatching number	62.2	61.9	100
Egg-type hatching number	79.9	85.0	106
Molted layers on July 1			
Being molted percent	2.4	2.0	83
Molt completed percent	13.8	13.5	98
Layers sold for slaughter during June 1,000	14,594.1	14,803.4	101
Layers rendered, died, destroyed, composted or disappeared for any reason during June 1,000	14,336.1	11,638.5	81
Pullets on July 1 1,000	123,544	127,005	103
Pullets added during June ¹ 1,000	27,796.9	28,040.6	101

¹ Pullet chicks less than 3 days old added to pullet flocks.

Layers on Hand and Eggs Produced by Type and Molt – United States: July-August 2020 and 2021

Item	2020	2021	2021 as percent of 2020
Layers during July			
Total layers 1,000	381,014	384,964	101
Table egg type 1,000	316,729	319,062	101
Hatching egg type 1,000	64,285	65,902	103
Broiler-type hatching 1,000	60,994	63,040	103
Egg-type hatching 1,000	3,291	2,862	87
Eggs per 100 layers during July			
Total layers number	2,445	2,439	100
Table egg type number	2,546	2,540	100
Hatching egg type number	1,950	1,950	100
Broiler-type hatching number	1,919	1,920	100
Egg-type hatching number	2,528	2,610	103
Eggs produced during July			
Total layers million	9,317.2	9,388.5	101
Table egg type million	8,063.5	8,103.7	100
Hatching egg type million	1,253.7	1,284.8	102
Broiler-type hatching million	1,170.5	1,210.1	103
Egg-type hatching million	83.2	74.7	90
Eggs produced during July			
Total layers 1,000 dozen	776,433.5	782,375.1	101
Table egg type 1,000 dozen	671,958.2	675,308.6	100
Hatching egg type 1,000 dozen	104,475.3	107,066.5	102
Broiler-type hatching 1,000 dozen	97,541.9	100,841.5	103
Egg-type hatching 1,000 dozen	6,933.4	6,225.0	90
Layers on August 1			
Total layers 1,000	380,700	385,008	101
Table egg type 1,000	316,516	319,310	101
Hatching egg type 1,000	64,184	65,698	102
Broiler-type hatching 1,000	60,889	62,821	103
Egg-type hatching 1,000	3,295	2,877	87
Eggs per 100 layers on August 1			
Total layers number	79.2	78.8	99
Table egg type number	82.5	82.0	99
Hatching egg type number	62.9	62.7	100
Broiler-type hatching number	61.8	61.8	100
Egg-type hatching number	83.2	83.1	100
Molted layers on August 1			
Being molted percent	1.6	2.0	125
Molt completed percent	14.7	13.2	90
Layers sold for slaughter during July 1,000	14,139.0	13,461.7	95
Layers rendered, died, destroyed, composted or disappeared for any reason during July 1,000	12,081.1	10,645.0	88
Pullets on August 1 1,000	122,240	126,077	103
Pullets added during July ¹ 1,000	25,543.4	25,096.4	98

¹ Pullet chicks less than 3 days old added to pullet flocks.

Layers on Hand and Eggs Produced – States and United States: During June 2020 and 2021

State	Table egg layers in flocks 30,000 and above		Total layers		Eggs per 100 for total layers	
	2020	2021	2020	2021	2020	2021
	(1,000 layers)	(1,000 layers)	(1,000 layers)	(1,000 layers)	(eggs)	(eggs)
Alabama	1,405	1,445	10,750	10,892	1,916	1,898
Arkansas	(D)	(D)	15,400	17,103	1,951	2,061
California	12,772	13,258	13,482	13,922	2,307	2,411
Colorado	4,503	4,424	5,011	4,932	2,596	2,496
Georgia	9,443	8,452	19,807	19,066	1,963	2,097
Illinois	5,670	6,278	6,207	6,816	2,407	2,290
Indiana	31,931	33,841	33,149	35,113	2,446	2,491
Iowa	46,479	47,002	48,400	48,908	2,398	2,498
Kentucky	(D)	(D)	5,923	5,377	2,168	2,202
Maryland	2,444	2,286	2,643	2,492	2,456	2,464
Michigan	14,134	14,403	14,429	14,698	2,406	2,486
Minnesota	7,799	7,608	8,312	8,136	2,275	2,387
Mississippi	(D)	(D)	5,459	5,373	2,037	2,047
Missouri	8,009	7,261	13,162	13,072	2,421	2,397
Nebraska	7,927	7,383	8,473	8,058	2,003	2,384
New York	5,086	5,245	5,651	5,798	2,529	2,439
North Carolina	7,011	7,274	15,729	15,882	2,091	2,084
Ohio	32,328	32,959	33,553	34,281	2,320	2,438
Oklahoma	(D)	(D)	2,544	2,195	1,926	1,831
Oregon	2,134	1,903	2,305	2,074	2,408	2,445
Pennsylvania	28,104	27,170	30,723	29,630	2,518	2,490
South Carolina	2,410	2,216	3,691	3,494	2,162	2,121
South Dakota	2,642	1,978	2,697	2,033	2,458	2,671
Texas	(D)	(D)	22,368	22,252	2,238	2,300
Utah	4,567	5,636	4,619	5,688	2,594	2,523
Virginia	857	826	2,649	2,699	2,337	2,275
Washington	6,689	6,602	6,853	6,766	2,503	2,408
Wisconsin	6,656	6,314	7,771	7,451	2,417	2,480
Other States ¹	25,407	23,936	31,392	30,039	2,324	2,302
United States	303,284	301,208	383,152	384,240	2,305	2,354

(D) Withheld to avoid disclosing data for individual operations.

¹ Includes data for States not published in this table.

Layers on Hand and Eggs Produced – States and United States: During July 2020 and 2021

State	Table egg layers in flocks 30,000 and above		Total layers		Eggs per 100 for total layers	
	2020	2021	2020	2021	2020	2021
	(1,000 layers)	(1,000 layers)	(1,000 layers)	(1,000 layers)	(eggs)	(eggs)
Alabama	1,359	1,442	10,695	10,884	2,005	1,972
Arkansas	(D)	(D)	15,732	16,768	2,057	2,072
California	12,650	13,364	13,343	14,001	2,424	2,507
Colorado	4,102	4,318	4,610	4,826	2,722	2,640
Georgia	9,665	8,732	20,031	19,228	2,191	2,163
Illinois	5,742	6,376	6,289	6,934	2,544	2,492
Indiana	32,111	33,896	33,395	35,134	2,584	2,570
Iowa	44,808	47,541	46,705	49,439	2,619	2,591
Kentucky	(D)	(D)	5,918	5,297	2,268	2,233
Maryland	2,436	2,267	2,636	2,463	2,530	2,546
Michigan	14,483	14,567	14,778	14,862	2,470	2,570
Minnesota	7,749	7,505	8,238	8,033	2,452	2,540
Mississippi	(D)	(D)	5,447	5,374	2,142	2,162
Missouri	7,724	7,237	12,869	12,961	2,571	2,450
Nebraska	8,006	7,530	8,531	8,189	2,327	2,478
New York	5,078	5,135	5,639	5,699	2,612	2,576
North Carolina	7,045	7,086	15,637	15,522	2,194	2,181
Ohio	32,242	33,272	33,465	34,588	2,557	2,526
Oklahoma	(D)	(D)	2,511	2,487	1,995	1,817
Oregon	2,049	1,888	2,220	2,059	2,518	2,671
Pennsylvania	28,359	27,800	30,973	30,235	2,607	2,592
South Carolina	2,351	2,264	3,598	3,509	2,268	2,157
South Dakota	2,596	1,882	2,651	1,937	2,659	2,705
Texas	(D)	(D)	22,335	22,396	2,313	2,338
Utah	4,443	5,742	4,495	5,794	2,661	2,585
Virginia	777	688	2,539	2,525	2,312	2,356
Washington	6,596	6,540	6,761	6,704	2,625	2,609
Wisconsin	6,720	5,893	7,823	7,022	2,518	2,572
Other States ¹	25,214	23,997	31,150	30,094	2,408	2,367
United States	301,044	302,696	381,014	384,964	2,445	2,439

(D) Withheld to avoid disclosing data for individual operations.

¹ Includes data for States not published in this table.

Egg Production by Type – States and United States: June 2020 and 2021

[Data by type of flock not shown for some States to avoid disclosing individual operations, data included in United States totals]

State	Total production		Table eggs		Hatching eggs	
	2020	2021	2020	2021	2020	2021
	(million eggs)	(million eggs)	(million eggs)	(million eggs)	(million eggs)	(million eggs)
Alabama	206.0	206.7	35.2	34.0	170.8	172.7
Arkansas	300.5	352.5	(D)	(D)	(D)	(D)
California	311.0	335.6	(D)	(D)	(D)	(D)
Colorado	130.1	123.1	(D)	(D)	(D)	(D)
Georgia	388.9	399.9	197.5	205.4	191.4	194.5
Illinois	149.4	156.1	146.0	152.5	3.4	3.6
Indiana	810.7	874.6	796.2	858.5	14.5	16.1
Iowa	1,160.6	1,221.6	1,136.8	1,197.4	23.8	24.2
Kentucky	128.4	118.4	(D)	(D)	(D)	(D)
Maryland	64.9	61.4	63.3	59.8	1.6	1.6
Michigan	347.1	365.4	(D)	(D)	(D)	(D)
Minnesota	189.1	194.2	182.1	186.6	7.0	7.6
Mississippi	111.2	110.0	(D)	(D)	(D)	(D)
Missouri	318.7	313.4	282.5	272.8	36.2	40.6
Nebraska	169.7	192.1	159.2	179.1	10.5	13.0
New York	142.9	141.4	(D)	(D)	(D)	(D)
North Carolina	328.9	331.0	169.6	175.5	159.3	155.5
Ohio	778.4	835.7	(D)	(D)	(D)	(D)
Oklahoma	49.0	40.2	(D)	(D)	(D)	(D)
Oregon	55.5	50.7	55.5	50.7	-	-
Pennsylvania	773.5	737.8	744.0	713.0	29.5	24.8
South Carolina	79.8	74.1	57.2	51.9	22.6	22.2
South Dakota	66.3	54.3	66.3	54.3	-	-
Texas	500.5	511.8	(D)	(D)	(D)	(D)
Utah	119.8	143.5	119.8	143.5	-	-
Virginia	61.9	61.4	31.1	30.6	30.8	30.8
Washington	171.5	162.9	(D)	(D)	(D)	(D)
Wisconsin	187.8	184.8	181.8	178.5	6.0	6.3
Other States ¹	729.7	691.4	657.0	620.0	72.7	71.4
United States	8,831.8	9,046.0	7,625.8	7,780.8	1,206.0	1,265.2

- Represents zero.

(D) Withheld to avoid disclosing data for individual operations.

¹ Not published separately to avoid disclosing individual operations.

Egg Production by Type – States and United States: July 2020 and 2021

[Data by type of flock not shown for some States to avoid disclosing individual operations, data included in United States totals]

State	Total production		Table eggs		Hatching eggs	
	2020	2021	2020	2021	2020	2021
	(million eggs)	(million eggs)	(million eggs)	(million eggs)	(million eggs)	(million eggs)
Alabama	214.4	214.6	37.5	36.2	176.9	178.4
Arkansas	323.6	347.5	(D)	(D)	(D)	(D)
California	323.5	351.0	(D)	(D)	(D)	(D)
Colorado	125.5	127.4	(D)	(D)	(D)	(D)
Georgia	438.9	415.9	242.2	217.0	196.7	198.9
Illinois	160.0	172.8	156.3	168.8	3.7	4.0
Indiana	862.8	902.9	846.6	887.4	16.2	15.5
Iowa	1,223.1	1,281.2	1,199.8	1,257.2	23.3	24.0
Kentucky	134.2	118.3	(D)	(D)	(D)	(D)
Maryland	66.7	62.7	65.1	61.3	1.6	1.4
Michigan	365.0	381.9	(D)	(D)	(D)	(D)
Minnesota	202.0	204.0	194.8	196.0	7.2	8.0
Mississippi	116.7	116.2	(D)	(D)	(D)	(D)
Missouri	330.8	317.5	292.6	276.9	38.2	40.6
Nebraska	198.5	202.9	188.4	189.7	10.1	13.2
New York	147.3	146.8	(D)	(D)	(D)	(D)
North Carolina	343.1	338.5	181.2	181.6	161.9	156.9
Ohio	855.8	873.7	(D)	(D)	(D)	(D)
Oklahoma	50.1	45.2	(D)	(D)	(D)	(D)
Oregon	55.9	55.0	55.9	55.0	-	-
Pennsylvania	807.6	783.6	777.3	757.6	30.3	26.0
South Carolina	81.6	75.7	58.9	53.4	22.7	22.3
South Dakota	70.5	52.4	70.5	52.4	-	-
Texas	516.7	523.7	(D)	(D)	(D)	(D)
Utah	119.6	149.8	119.6	149.8	-	-
Virginia	58.7	59.5	27.9	28.4	30.8	31.1
Washington	177.5	174.9	(D)	(D)	(D)	(D)
Wisconsin	197.0	180.6	190.7	174.6	6.3	6.0
Other States ¹	750.1	712.3	676.9	637.9	73.2	74.4
United States	9,317.2	9,388.5	8,063.5	8,103.7	1,253.7	1,284.8

- Represents zero.

(D) Withheld to avoid disclosing data for individual operations.

¹ Not published separately to avoid disclosing individual operations.

Egg Production in Dozens by Type – States and United States: June 2020 and 2021

[Data by type of flock not shown for some States to avoid disclosing individual operations, data included in United States totals]

State	Total production		Table eggs		Hatching eggs	
	2020	2021	2020	2021	2020	2021
	(1,000 dozen eggs)	(1,000 dozen eggs)	(1,000 dozen eggs)	(1,000 dozen eggs)	(1,000 dozen eggs)	(1,000 dozen eggs)
Alabama	17,166.6	17,225.0	2,933.3	2,833.3	14,233.3	14,391.7
Arkansas	25,041.6	29,375.0	(D)	(D)	(D)	(D)
California	25,916.6	27,966.7	(D)	(D)	(D)	(D)
Colorado	10,841.7	10,258.4	(D)	(D)	(D)	(D)
Georgia	32,408.4	33,325.0	16,458.4	17,116.7	15,950.0	16,208.3
Illinois	12,450.0	13,008.3	12,166.7	12,708.3	283.3	300.0
Indiana	67,558.4	72,883.2	66,350.0	71,541.6	1,208.4	1,341.6
Iowa	96,716.6	101,799.9	94,733.3	99,783.3	1,983.3	2,016.6
Kentucky	10,699.9	9,866.7	(D)	(D)	(D)	(D)
Maryland	5,408.3	5,116.7	5,275.0	4,983.3	133.3	133.4
Michigan	28,925.0	30,450.0	(D)	(D)	(D)	(D)
Minnesota	15,758.4	16,183.4	15,175.0	15,550.0	583.4	633.4
Mississippi	9,266.7	9,166.7	(D)	(D)	(D)	(D)
Missouri	26,558.3	26,116.6	23,541.7	22,733.3	3,016.6	3,383.3
Nebraska	14,141.7	16,008.3	13,266.7	14,925.0	875.0	1,083.3
New York	11,908.3	11,783.3	(D)	(D)	(D)	(D)
North Carolina	27,408.3	27,583.3	14,133.3	14,625.0	13,275.0	12,958.3
Ohio	64,866.7	69,641.7	(D)	(D)	(D)	(D)
Oklahoma	4,083.4	3,350.1	(D)	(D)	(D)	(D)
Oregon	4,625.0	4,225.0	4,625.0	4,225.0	-	-
Pennsylvania	64,458.3	61,483.4	62,000.0	59,416.7	2,458.3	2,066.7
South Carolina	6,650.0	6,175.0	4,766.7	4,325.0	1,883.3	1,850.0
South Dakota	5,525.0	4,525.0	5,525.0	4,525.0	-	-
Texas	41,708.3	42,650.0	(D)	(D)	(D)	(D)
Utah	9,983.3	11,958.3	9,983.3	11,958.3	-	-
Virginia	5,158.3	5,116.7	2,591.6	2,550.0	2,566.7	2,566.7
Washington	14,291.7	13,575.0	(D)	(D)	(D)	(D)
Wisconsin	15,650.0	15,400.0	15,150.0	14,875.0	500.0	525.0
Other States ¹	60,808.3	57,616.8	54,750.0	51,666.7	6,058.3	5,950.1
United States	735,983.1	753,833.5	635,483.2	648,400.1	100,499.9	105,433.4

- Represents zero.

(D) Withheld to avoid disclosing data for individual operations.

¹ Not published separately to avoid disclosing individual operations.

Egg Production in Dozens by Type – States and United States: July 2020 and 2021

[Data by type of flock not shown for some States to avoid disclosing individual operations, data included in United States totals]

State	Total production		Table eggs		Hatching eggs	
	2020	2021	2020	2021	2020	2021
	(1,000 dozen eggs)	(1,000 dozen eggs)	(1,000 dozen eggs)	(1,000 dozen eggs)	(1,000 dozen eggs)	(1,000 dozen eggs)
Alabama	17,866.7	17,883.4	3,125.0	3,016.7	14,741.7	14,866.7
Arkansas	26,966.7	28,958.4	(D)	(D)	(D)	(D)
California	26,958.4	29,250.0	(D)	(D)	(D)	(D)
Colorado	10,458.3	10,616.7	(D)	(D)	(D)	(D)
Georgia	36,574.9	34,658.3	20,183.3	18,083.3	16,391.6	16,575.0
Illinois	13,333.4	14,399.9	13,025.0	14,066.6	308.4	333.3
Indiana	71,900.0	75,241.6	70,550.0	73,950.0	1,350.0	1,291.6
Iowa	101,925.1	106,766.7	99,983.4	104,766.7	1,941.7	2,000.0
Kentucky	11,183.3	9,858.3	(D)	(D)	(D)	(D)
Maryland	5,558.3	5,225.1	5,425.0	5,108.4	133.3	116.7
Michigan	30,416.7	31,825.0	(D)	(D)	(D)	(D)
Minnesota	16,833.4	17,000.0	16,233.4	16,333.3	600.0	666.7
Mississippi	9,725.0	9,683.3	(D)	(D)	(D)	(D)
Missouri	27,566.7	26,458.3	24,383.3	23,075.0	3,183.4	3,383.3
Nebraska	16,541.7	16,908.3	15,700.0	15,808.3	841.7	1,100.0
New York	12,274.9	12,233.4	(D)	(D)	(D)	(D)
North Carolina	28,591.7	28,208.4	15,100.0	15,133.4	13,491.7	13,075.0
Ohio	71,316.7	72,808.3	(D)	(D)	(D)	(D)
Oklahoma	4,175.0	3,766.7	(D)	(D)	(D)	(D)
Oregon	4,658.3	4,583.3	4,658.3	4,583.3	-	-
Pennsylvania	67,300.0	65,300.1	64,775.0	63,133.4	2,525.0	2,166.7
South Carolina	6,800.0	6,308.3	4,908.3	4,450.0	1,891.7	1,858.3
South Dakota	5,875.0	4,366.7	5,875.0	4,366.7	-	-
Texas	43,058.3	43,641.7	(D)	(D)	(D)	(D)
Utah	9,966.7	12,483.3	9,966.7	12,483.3	-	-
Virginia	4,891.7	4,958.3	2,325.0	2,366.6	2,566.7	2,591.7
Washington	14,791.6	14,575.0	(D)	(D)	(D)	(D)
Wisconsin	16,416.6	15,050.0	15,891.6	14,550.0	525.0	500.0
Other States ¹	62,508.4	59,358.3	56,408.3	53,158.3	6,100.1	6,200.0
United States	776,433.5	782,375.1	671,958.2	675,308.6	104,475.3	107,066.5

- Represents zero.

(D) Withheld to avoid disclosing data for individual operations.

¹ Not published separately to avoid disclosing individual operations.

Total Layers Molted First Day of the Month by Month – United States: 2020-2021

[Blank data cells indicate estimation period has not yet begun]

Month	Being molted		Molt completed	
	2020	2021	2020	2021
	(percent)	(percent)	(percent)	(percent)
January	1.7	2.2	11.9	14.0
February	2.3	1.8	12.0	14.4
March	1.7	1.6	12.3	14.7
April	1.3	1.4	12.1	14.1
May	3.5	2.5	11.0	12.8
June	4.6	2.3	11.8	12.8
July	2.4	2.0	13.8	13.5
August	1.6	2.0	14.7	13.2
September	2.3		14.0	
October	2.3		14.7	
November	1.2		15.4	
December	1.1		14.9	

Total Layers Molted First Day of the Month – States and United States: July 1 and August 1, 2020-2021

State	Being molted				Molt completed			
	July 1		August 1		July 1		August 1	
	2020	2021	2020	2021	2020	2021	2020	2021
	(percent)	(percent)	(percent)	(percent)	(percent)	(percent)	(percent)	(percent)
Alabama	0.5	0.5	0.5	0.5	5.5	4.5	4.5	4.5
Arkansas	2.5	1.5	0.5	-	11.0	14.0	13.0	13.5
California	1.5	0.5	2.0	1.5	7.0	8.0	7.5	7.5
Colorado	0.5	2.5	-	-	6.0	7.0	6.0	8.5
Georgia	2.5	1.0	1.5	1.5	9.0	11.0	10.5	11.0
Illinois	1.5	-	1.5	-	4.0	3.0	3.0	2.5
Indiana	1.5	2.0	2.5	2.0	13.5	12.0	13.0	11.5
Iowa	1.5	1.0	0.5	1.0	15.0	11.0	15.5	10.5
Kentucky	6.0	2.0	3.0	5.5	2.5	-	8.0	-
Maryland	-	-	-	-	-	-	-	-
Michigan	1.0	3.5	1.0	1.5	1.0	3.0	1.5	2.0
Minnesota	-	-	-	1.0	20.0	8.0	19.5	6.5
Mississippi	4.0	2.0	2.0	-	23.5	18.0	24.0	19.0
Missouri	-	2.5	3.0	1.0	2.0	8.5	2.0	11.0
Nebraska	7.0	3.5	1.0	2.0	36.5	0.5	40.0	1.0
New York	1.0	1.5	-	-	5.5	3.5	6.0	4.5
North Carolina	2.0	-	2.0	2.0	6.0	14.0	7.5	12.5
Ohio	4.0	2.5	1.5	2.5	19.0	15.0	20.5	13.0
Oklahoma	3.5	6.5	3.5	-	6.5	-	9.5	5.0
Oregon	-	-	-	-	1.0	-	1.0	-
Pennsylvania	1.0	3.0	-	3.5	6.5	2.0	6.0	2.0
South Carolina	6.0	-	3.0	3.0	19.5	19.0	20.0	19.0
South Dakota	-	-	-	-	-	3.5	-	3.5
Texas	8.5	5.0	4.0	5.0	44.5	56.0	48.0	56.0
Utah	2.5	5.5	2.5	4.5	16.5	23.5	17.5	26.5
Virginia	-	-	-	-	-	-	-	-
Washington	4.5	-	-	2.0	12.0	16.5	14.0	17.0
Wisconsin	-	-	-	-	23.5	23.0	23.5	18.0
Other States ¹	2.9	2.9	3.8	3.5	16.4	23.2	17.7	23.8
United States	2.4	2.0	1.6	2.0	13.8	13.5	14.7	13.2

- Represents zero.

¹ Includes data for States not published in this table.

Hatchery Production – United States: 2020 and 2021

Item	2020	2021	2021 as percent of 2020
	(1,000)	(1,000)	(percent)
Egg-type			
Eggs in incubators on August 1	46,242	43,998	95
Chicks hatched during July	46,140	50,370	109
Chicks hatched January through July	372,569	386,852	104
Pullets hatched during July for intended placements:			
Hatchery supply flocks	294	199	68
Cumulative potential placements 7-18 months earlier ¹	2,872	3,610	126
Broiler-type			
Eggs in incubators on August 1	687,521	718,177	104
Chicks hatched during July	850,772	844,328	99
Chicks hatched January through July	5,787,037	5,791,070	100
Pullets hatched during July for intended placements:			
Hatchery supply flocks	8,235	8,623	105
Cumulative potential placements 7-15 months earlier ²	74,341	74,246	100

¹ 2021 includes pullet chicks hatched January 2020 through December 2020.

² 2021 includes pullet chicks hatched April 2020 through December 2020.

Egg-Type Eggs in Incubators on the First of the Month – United States: 2020-2021

[Blank data cells indicate estimation period has not yet begun]

Item	2020	2021	2021 as percent of 2020
	(1,000)	(1,000)	(percent)
January	47,563	50,735	107
February	50,382	53,521	106
March	49,101	59,970	122
April	57,435	55,684	97
May	49,502	53,802	109
June	50,029	51,073	102
July	46,093	50,532	110
August	46,242	43,998	95
September	47,296		
October	46,624		
November	44,601		
December	53,170		

Egg-Type Chicks Hatched by Month – United States: 2020-2021

[Blank data cells indicate estimation period has not yet begun]

Month	By Months			Cumulative		
	2020	2021	2021 as percent of 2020	2020	2021	2021 as percent of 2020
	(1,000 chicks)	(1,000 chicks)	(percent)	(1,000 chicks)	(1,000 chicks)	(percent)
January	52,727	50,882	97	52,727	50,882	97
February	48,148	52,273	109	100,875	103,155	102
March	56,212	62,319	111	157,087	165,474	105
April	61,015	59,877	98	218,102	225,351	103
May	52,790	57,332	109	270,892	282,683	104
June	55,537	53,799	97	326,429	336,482	103
July	46,140	50,370	109	372,569	386,852	104
August	50,007			422,576		
September	49,989			472,565		
October	50,597			523,162		
November	48,042			571,204		
December	51,765			622,969		

Intended Placements of Egg-Type Pullet Chicks for Hatchery Supply Flocks by Month and Total – United States: 2020-2022

[Blank data cells indicate estimation period has not yet begun]

Month	Pullet chicks hatched		2021 as percent of 2020	Cumulative potential placements relative to current supply flocks 7-18 months earlier ¹	
	2020	2021		2021	2022
	(1,000 chicks)	(1,000 chicks)	(percent)	(1,000 chicks)	(1,000 chicks)
January	265	279	105	3,352	3,360
February	482	202	42	3,391	3,265
March	322	327	102	3,567	
April	243	266	109	3,482	
May	233	306	131	3,480	
June	373	288	77	3,451	
July	294	199	68	3,610	
August	370			3,624	
September	201			3,344	
October	197			3,349	
November	169			3,372	
December	461			3,445	
Annual total	3,610				

¹ For July 2021, includes breeder pullet chicks hatched January 2020 through December 2020. The 7-18 months represent the first laying cycle. Molting and additional laying cycles will increase the cumulative potential placements.

Broiler-Type Eggs in Incubators on the First of the Month – United States: 2020-2021

[Blank data cells indicate estimation period has not yet begun]

Item	2020	2021	2021 as percent of 2020
	(1,000)	(1,000)	(percent)
January	714,799	712,232	100
February	716,942	703,515	98
March	718,746	710,502	99
April	692,345	717,361	104
May	662,186	717,718	108
June	701,760	720,441	103
July	700,673	714,769	102
August	687,521	718,177	104
September	691,508		
October	665,148		
November	664,550		
December	706,563		

Broiler-Type Chicks Hatched – States and United States: July 2020 and 2021

State	During July			January-July		
	2020	2021	2021 as percent of 2020	2020	2021	2021 as percent of 2020
	(1,000 chicks)	(1,000 chicks)	(percent)	(1,000 chicks)	(1,000 chicks)	(percent)
Alabama	119,426	118,449	99	820,324	815,989	99
Arkansas	84,304	85,485	101	578,307	584,845	101
Delaware	17,612	17,150	97	119,828	119,015	99
Florida	4,284	4,185	98	29,718	29,179	98
Georgia	124,524	120,486	97	849,180	824,064	97
Kentucky	27,025	26,629	99	185,444	185,557	100
Louisiana	11,999	11,547	96	84,979	81,699	96
Maryland	29,850	28,830	97	200,157	195,990	98
Mississippi	66,020	62,780	95	447,073	430,323	96
Missouri	31,944	33,934	106	221,236	229,535	104
North Carolina	89,281	87,827	98	598,234	611,731	102
Oklahoma	24,143	25,387	105	178,765	173,213	97
Pennsylvania	23,469	23,475	100	154,585	160,142	104
South Carolina	20,714	20,471	99	137,109	137,653	100
Texas	64,826	64,266	99	435,577	440,813	101
Virginia	23,724	23,525	99	153,747	160,058	104
California, Tennessee, and West Virginia	44,884	44,147	98	311,116	309,170	99
Other States ¹	42,743	45,755	107	281,658	302,094	107
United States	850,772	844,328	99	5,787,037	5,791,070	100

¹ Not published separately to avoid disclosing data for individual operations.

Broiler-Type Chicks Hatched by Month – United States: 2020-2021

[Blank data cells indicate estimation period has not yet begun]

Month	By Months			Cumulative		
	2020	2021	2021 as percent of 2020	2020	2021	2021 as percent of 2020
	(1,000 chicks)	(1,000 chicks)	(percent)	(1,000 chicks)	(1,000 chicks)	(percent)
January	860,517	849,965	99	860,517	849,965	99
February	806,947	759,210	94	1,667,464	1,609,175	97
March	861,074	841,946	98	2,528,538	2,451,121	97
April	771,589	821,223	106	3,300,127	3,272,344	99
May	807,648	850,810	105	4,107,775	4,123,154	100
June	828,490	823,588	99	4,936,265	4,946,742	100
July	850,772	844,328	99	5,787,037	5,791,070	100
August	837,852			6,624,889		
September	809,563			7,434,452		
October	805,553			8,240,005		
November	783,152			9,023,157		
December	848,536			9,871,693		

Intended Placements of Broiler-Type Pullet Chicks for Hatchery Supply Flocks by Month and Total: 2020-2022

[Blank data cells indicate estimation period has not yet begun]

Month	Pullet chicks hatched		2021 as percent of 2020	Cumulative potential placements relative to current supply flocks 7-15 months earlier ¹	
	2020	2021		2021	2022
	(1,000 chicks)	(1,000 chicks)	(percent)	(1,000 chicks)	(1,000 chicks)
United States placements					
January	7,482	8,095	108	72,886	74,605
February	8,135	8,245	101	73,590	75,156
March	8,547	8,232	96	73,660	
April	8,161	8,110	99	74,741	
May	8,188	8,708	106	75,331	
June	8,074	9,546	118	74,992	
July	8,235	8,623	105	74,246	
August	8,211			74,180	
September	9,708			74,237	
October	8,072			74,395	
November	7,796			74,270	
December	7,801			74,767	
Annual total	98,410				
Total placements ²					
January	9,022	9,811	109		
February	9,581	9,954	104		
March	10,183	9,996	98		
April	9,700	9,908	102		
May	9,860	10,148	103		
June	9,713	11,179	115		
July	9,726	10,079	104		
August	9,902				
September	11,729				
October	9,975				
November	9,324				
December	9,177				
Annual total	117,892				

¹ For July 2021, includes breeder pullet chicks hatched April 2020 through December 2020.

² United States production of intended placements worldwide.

Terms and Definitions of Chickens and Eggs Estimates

Total Layers includes both table egg and hatching egg flocks regardless of size.

Intended Placements are reported by leading breeders. Coverage may not be 100 percent. Includes expected pullet chicks from eggs sold during the preceding month at the rate of 125 pullet chicks per case of 30 dozen eggs.

Molted Layers is the same data series as the previously published Forced Molt Layers. Nomenclature changed as of January 2015.

Statistical Methodology

Survey Procedures: Primary data for the *Chickens and Eggs* report are from weekly and/or monthly questionnaires sent to producers. An attempt is made to collect information for layer and egg estimates from each known contractor and independent producer who has at least 30,000 table egg layers, flocks of hatchery supply layers, or pullet only operations with at least 500 pullets. Coverage for operations with less than 30,000 table egg layers are estimated each month based on data reported in December. Approximately 500 contractors, independent egg producers, and pullet only operations are contacted each month. Data for broiler hatchery estimates are collected weekly from all broiler-type hatcheries that hatch at least one million chicks a year. Data for egg-type hatchery estimates are collected monthly from all egg-type hatcheries that hatch at least 50,000 chicks a year.

Estimating Procedures: Sound statistical methodology is employed to derive estimates from the reported data. All data are analyzed for unusual values. Data from each operation are compared to their own past operating profile and to trends from similar operations. Data for missing operations are estimated based on similar operations or historical data. NASS regional field offices prepare these estimates by using a combination of survey indications and historic trends. Individual State estimates are reviewed by the Agricultural Statistics Board for reasonableness.

For chicken hatcheries, chicks hatched consist of all chicks of domesticated breeds including males and chicks destined for hatchery supply flocks and research purposes. Eggs set are eggs in incubators for the purpose of hatching. The relationship of egg-type chicks hatched to chicken inventory and poultry marketings are carefully monitored. The disposition of egg-type chicks hatched prior to placement into the laying flock can vary significantly, which can make comparisons to changes in layer inventory inconsistent over time. Broiler chicks placed are specifically for meat production. Intended placement data reported by leading breeders include pullet chicks expected from eggs sold the preceding month. The breeders in this report account for a large percentage of replacement pullets for hatchery supply flocks. Production of replacement pullets by these breeders indicates the number of pullets available to hatchery supply layer flocks several months before the pullets will actually move into the laying flocks. "Hatchery Supply Flocks" include all generations of layers which could lay eggs to supply a hatchery. This includes the generations of parents, grandparents, great-grandparents, pedigree, etc. Also included are research flocks, vaccine flocks, and specific pathogen-free flocks. The broiler cumulative potential placements are a moving total of the intended placements 7-15 months earlier. The egg-type cumulative potential placements of 7-18 months earlier represent the first laying cycle. Molting and additional laying cycles will increase the cumulative potential placements of egg-type hatching flocks.

Revision Policy: The previous month's estimates are subject to revision if late reports or corrected data indicates a different level. Additionally, revisions after the monthly report will be made at the end of the marketing year and published in the annual reports of *Chickens and Eggs Summary* and *Hatchery Production Summary*. Estimates will also be reviewed for chickens and eggs after data from the 5-year Census of Agriculture are available. No revisions will be made after that date.

Reliability: Estimates are based on a census of all known contractors and independent producers who have at least 30,000 table egg layers, flocks of hatchery supply layers, pullet only operations with at least 500 pullets, or operating hatcheries and therefore, have no sampling error. However, estimates are subject to errors such as omission, duplication, and mistakes in reporting, recording, and processing the data. While these errors cannot be measured directly, they are minimized through strict quality controls in the data collection process and a careful review of all reported data for consistency and reasonableness.

To assist in evaluating the reliability of the estimates in this report, the "Root Mean Square Error" is shown for selected items in the following table. The "Root Mean Square Error" is a statistical measure based on past performance and is computed using the differences between first and final estimates. The "Root Mean Square Error" for total layers over the past 24 months is 0.2 percent. This means that chances are 2 out of 3 that the final estimate will not be above or below the current estimate of 385 million layers by more than 0.2 percent. Chances are 9 out of 10 that the difference will not exceed 0.4 percent.

Reliability of Layer and Egg Estimates

[Based on data for the past 24 months]

Item	Root mean square error	90 percent confidence level	Difference between first and latest estimate				
			Average	Smallest	Largest	Months	
						Below latest	Above latest
Total layers	(percent) 0.2	(percent) 0.4	(1,000) 722	(1,000) 34	(1,000) 2,273	(number) 19	(number) 5
Eggs	0.3	0.5	(million) 19.9	(million) 0	(million) 65	19	5

Information Contacts

Listed below are the commodity specialists in the Livestock Branch of the National Agricultural Statistics Service to contact for additional information. E-mail inquiries may be sent to nass@usda.gov

Travis Averill, Chief, Livestock Branch	(202) 692-0069
Jean Porter, Head, Poultry and Specialty Commodities Section	(202) 690-3223
Holly Brenize – Poultry Slaughter.....	(202) 720-0585
Alissa Cowell-Mytar – Cold Storage, Capacity of Refrigerated Warehouses	(202) 720-4751
Liana Cuffman – Catfish and Trout, Mink, Census of Aquaculture	(202) 720-8784
Fatema Haque – Turkey Hatchery, Turkeys Raised	(202) 720-3244
Derron Martin – Chicken Hatchery, Egg Products.....	(202) 690-3237
Seth Riggins – Honey, Honey Bee Colonies	(202) 690-4870
Autumn Stone – Layers, Eggs	(202) 690-3676
Takiyah Walker – Broiler Hatchery.....	(202) 720-6147

Access to NASS Reports

For your convenience, you may access NASS reports and products the following ways:

- All reports are available electronically, at no cost, on the NASS web site: www.nass.usda.gov
- Both national and state specific reports are available via a free e-mail subscription. To set-up this free subscription, visit www.nass.usda.gov and click on “National” or “State” in upper right corner above “search” box to create an account and select the reports you would like to receive.
- Cornell’s Mann Library has launched a new website housing NASS’s and other agency’s archived reports. The new website, <https://usda.library.cornell.edu>. All email subscriptions containing reports will be sent from the new website, <https://usda.library.cornell.edu>. To continue receiving the reports via e-mail, you will have to go to the new website, create a new account and re-subscribe to the reports. If you need instructions to set up an account or subscribe, they are located at: <https://usda.library.cornell.edu/help>. You should whitelist notifications@usda-esmis.library.cornell.edu in your email client to avoid the emails going into spam/junk folders.

For more information on NASS surveys and reports, call the NASS Agricultural Statistics Hotline at (800) 727-9540, 7:30 a.m. to 4:00 p.m. ET, or e-mail: nass@usda.gov.

The U.S. Department of Agriculture (USDA) prohibits discrimination against its customers, employees, and applicants for employment on the basis of race, color, national origin, age, disability, sex, gender identity, religion, reprisal, and where applicable, political beliefs, marital status, familial or parental status, sexual orientation, or all or part of an individual's income is derived from any public assistance program, or protected genetic information in employment or in any program or activity conducted or funded by the Department. (Not all prohibited bases will apply to all programs and/or employment activities.)

If you wish to file a Civil Rights program complaint of discrimination, complete the [USDA Program Discrimination Complaint Form](#) (PDF), found online at www.ascr.usda.gov/filing-program-discrimination-complaint-usda-customer, or at any USDA office, or call (866) 632-9992 to request the form. You may also write a letter containing all of the information requested in the form. Send your completed complaint form or letter to us by mail at U.S. Department of Agriculture, Director, Office of Adjudication, 1400 Independence Avenue, S.W., Washington, D.C. 20250-9410, by fax (202) 690-7442 or email at program.intake@usda.gov.